

Preliminary Survey of Gastropods and Pelecypods around Sin-ma Village, Patheingyi Township

Aye Thant Zin¹, Lai Lai Khaing¹ and Cho Cho Lwin²

Abstract

Sin-ma village was designated as study site. The collections, of gastropods and pelecypods were made during field trips taken from 15th to 16th November 2005 and 7th to 9th April 2006. Thirty-four mollusk species under 30 genera, belonging to 23 families and 6 orders were recorded. Identification of the specimens was made based on the distinctive characters, coloration of the shell together with measurement. All the specimens were illustrated with photographs.

Key words: gastropods, pelecypods, Patheingyi

Introduction

Many studies had been made on mollusks collected from various parts of Myanmar. Ecological aspects and economical uses of some species from Ngapali was given by Soe Thu (1970), from Maungmagan by Soe Thu (1971) and taxonomy and distribution of Burmese Marine Gastropods from Moscos Islands was expressed by Soe Thu (1980). A checklist of mollusks from the Myeik Archipelago and Moscos Islands was given by Kyaw Myint (1971). The taxonomy and distribution of the marine bivalves of Myanmar coastal regions was given by Malar Myo Sein (1982). Systematic and Ecological Aspects of some Gastropods and Pelecypods of wet the and Chaungtha area was described by Nan Nwe Nwe Aye (1998). Preliminary study on some gastropods of Sin-ma-kyun, Ngwe-Saung Resort was described by Hla Hla Win, Yin Yin Tint, et al (2002).

However, there still remain some areas where the molluscan fauna have not yet been studied. A thorough study is essential to complete the molluscan fauna of Ayeyawady Division.

Materials and Methods

Collection of specimen was made during field trips takes on 15th to 16th November 2005 and 7th to 9th April 2006. Five to 10 samples were studied for each specimen. Identifications of the specimens was made based

1. Associate Professors, Dr, Department of Zoology, Patheingyi University

2. Assistant Lecturer, Department of Zoology, Patheingyi University

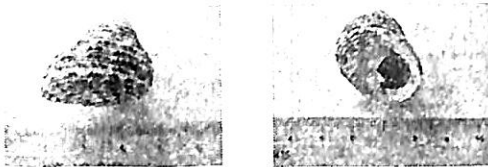
Table 1. Systematic list of studied species (after Habe and Kosuge, 1972)

Phylum	Class	Order	Family	Species
Mollusca	Gastropoda	Archaeogastropoda	Trochidae	<i>Monodonta labio</i>
				<i>M. obtusa</i>
				<i>Trochus radiata</i>
				<i>Tectus</i> <i>(Rochia) niloticus</i> <i>maximus</i>
			Turbinidae	<i>Turbo argyrostomus</i>
		Mesogastropoda	Turritellidae	<i>Turritella carinifera</i>
			Potamididae	<i>Telescopium telescpium</i>
			Xenophoridae	<i>Stellaria solaris</i>
			Strombidae	<i>Strombus bulla</i>
				<i>Laebistrombus canarium</i>
				<i>Lambis chiragra</i>
			Cypraeidae	<i>Cypraea arabica</i>
			Bursidae	<i>Bursa rana</i>
			Cassidae	<i>Cassis cornuta</i>
			Tonnidae	<i>Tonna fasciata</i>
				<i>T. tessellata</i>
			Ficidae	<i>Ficus gracilis</i>
		Neogastropoda	Muricidae	<i>Murex trapa</i>
				<i>Chicoreus ramosus</i>
				<i>Drupa brunneus</i>
			Rapidae	<i>Rapana venosa</i>
			Buccinidae	<i>Babylonia areolata</i>
			Volegadae	<i>Volegalea wardiana</i>
			Olividae	<i>Oliva erythrostoma</i>
			Harpidae	<i>Harpa davidis</i>

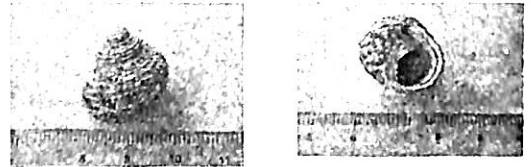
Phylum	Class	Order	Family	Species
			Volutidae	<i>Melo melo</i>
	Pelecypoda	Taxodonta	Arcidae	<i>Anadra globosa</i>
		Anisomyaria	Ostreidae	<i>Saxostrea mordax</i>
		Heterodonta	Cardiidae	<i>Cardium alternatum</i>
				<i>C. multispinosum</i>
			Mactridae	<i>Mactra cumingi</i>
			Donacidae	<i>Donax scrotum</i>
			Asaphidae	<i>Asaphis dichotoma</i>
			Solenidae	<i>Siliqua japonica</i>

Gastropoda

Monodonta labio (Apertural view)



Monodonta obtusa (Apertural view)



Trochus radiata



Tectus (Rochia) niloticus maximus



Turbo argyrostomus



Turritella carinifera



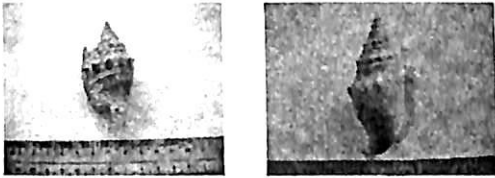
Telescopium telescopium



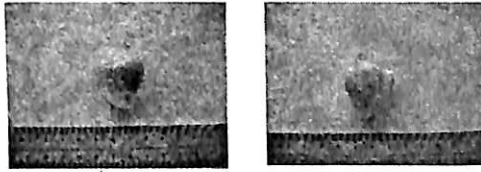
Stellaria solaris



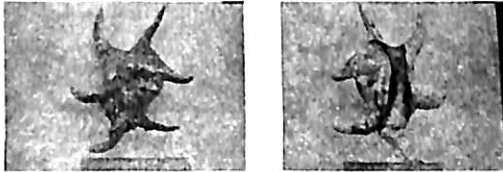
Strombus bulla



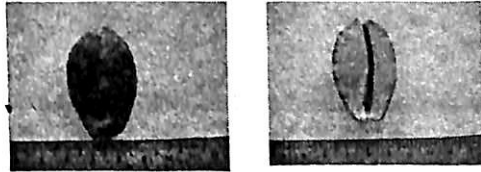
Laevistrombus canarium



Lambis chiragra



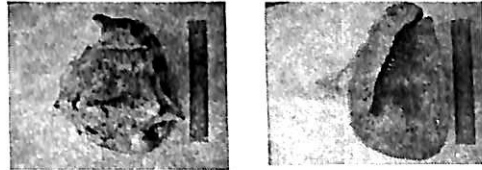
Cypraea arabica



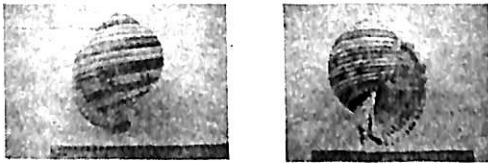
Bursa rana



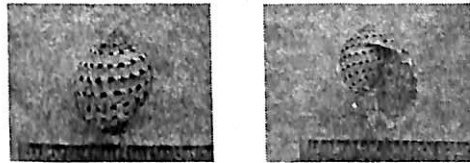
Cassis cornuta



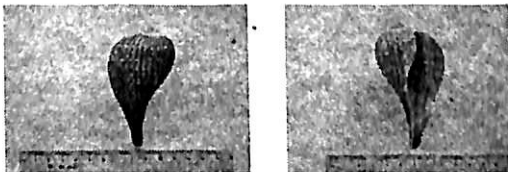
Tonna fasciata



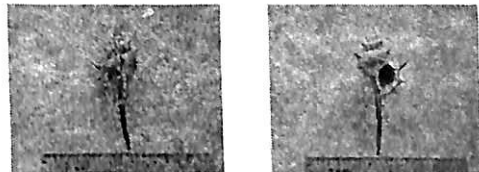
Tonna tessellata



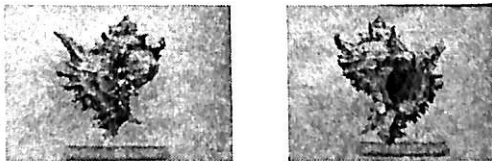
Ficus gracilis



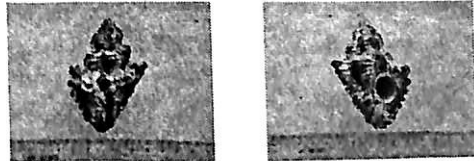
Murex trapa



Chicoreus ramosus



Drupa brunneus

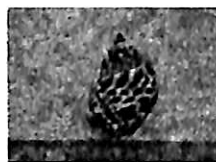


Rapana venosa

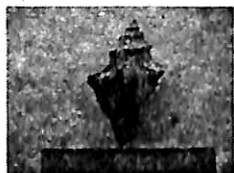
Babylonia areolata



Volegalae wardiana



Oliva erythrostoma



Harpa dividis



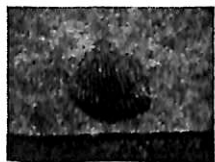
Melo melo



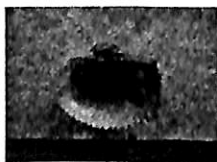
Pelecypoda

Anadra globosa

(Exterior view)



(Interior view)



Saxostrea mordax

(colony)

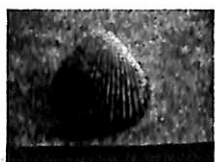


(Individual)

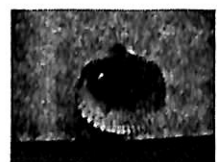


Cardium multispinosum

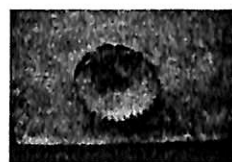
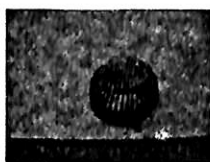
(Exterior view)



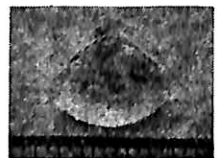
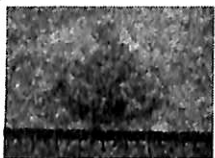
(Interior view)



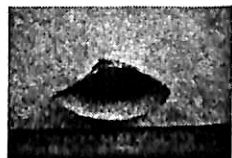
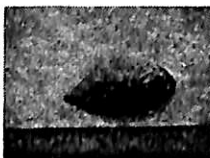
Cardium alternum

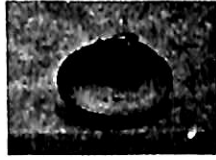
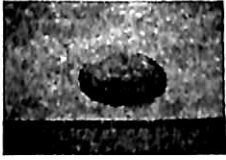
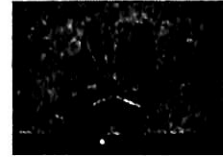


Maetra cumingi



Donax scrotum



Asaphis dichotoma*Siliqua japonica*

Discussion

Altogether 26 species of gastropods and eight species of pelecypods were recorded from the study area. The gastropods and pelecypods of *Theliostyla aribica*, *Archetectonica perspective*, *Strombus isabella*, *Polinices pyriformis*, *Cymatium aquatile*, *Phalium areola*, *P. glaucum*, *Pinctada margaritifera*, *Placuna placenta*, *Amusium pleuroneetes*, *Veremolpa minuta*, *Tridacna squamosa* and *Dosinia dunkeri* were collected in Chaungtha region (Nan New New Aye, 1996). These species were not recorded in Sin-ma area during the study period.

Although some of species are the same genus level but are the differences species in the study periods compare to the former authors, Hla Hla Win, Yin Yin Tint, et al., 2002.. They are *Strombus panarius*, *Turritella fastalis*, *Turbo chrystomus*. The genus of *Cypraea* are more commonly in Simma area (Hla Hla Win, Yin Yin Tint et al., 2002). *Nereverea reiniana*, *Clyteomorus bifosciatus*, *Planaxis sp.* and *Retena sp.*, *Archetectonica perspective* were not found in the study periods.

The present study on the molluscan fauna of Sin-ma village comprises only those specimens collected during the short field trips taken. There still remain much more species which are known to occur but not yet collected.

Acknowledgements

We are indebted to Dr. Nyunt Phay, Rector and Dr. Than Soe, Pro-Rector for their encouragement to conduct this research. The writers would like to thank Professor Saw Gayder Kittim Ku, Head, Zoology Department, University of Patheingyi for her permission to do this research work. The writers also wish to Professor Dr. Htin Aung for providing valuable references. Lastly, the writers are most grateful to villagers for the help provided in Sin-ma beach during the field trip.

References

- Easton W. H. (1960) *Invertebrate Paleontology*. Harper and Row Publishers, New York
- Habe, Tadashige and Asdso Kosuge (1972) *Shells of the world in color. Vol. II The Tropical Pacific*. Hoikusha Publishing o. Ltd. Osaka, Japan.
- Hla Hla Win, YinYin Tiint, Thein Tun, Soe Soe Oo, Kan Shein, Win Kyi, Nu Nu Aye, Yin Yin Win, Aye Aye Ko, Khaing Shwe War Win, Hla Hla Win (2), Myo Thida, Hla Win Zaw (2002) *Preliminary Study on Some Gastropods of Sin-ma-kyun, Ngwe-Saung Resort* (Unpublished)
- Kyaw Myint (1971) *Checklist of Molluscs of the Mergui Archipelago and the Moscos Islands*. Teketho Pyinnya Padetha Journal, Vol. VI, Part II, University Press, Yangon.
- Mar Lar Myo Sein (1982). *Axonomy and Distribution of Burmese Marine Bivalves*. M.Sc. Thesis (Unpublished) Department of Zoology, University of Yangon.
- Nan Nwe Nwe Aye (1998) *On the Systematic and Ecological Aspects of Some Gastropods and Pelecypods of Wet-The and Chaungtha areas (Pathein Township, Thbaung Township, Ayeyarwady Division)*. M.Sc. Thesis (Unpublished) Department of Zoology, University of Yangon.
- Shrock , R. R. and Twenhoeft, W. H. (1953) *Principles of Invertebrate Paleontology*. Second Edition. Kogakusha Company, Ltd. Tokyo.
- Soe Thu (1970) *Sea shells of Ngapali*. Taketho Pyinnya Padetha Journal, Vol. V. No.1 University Press, Rangoon.
- Soe Thu (1971) *Sea shells of Maungmagan*. Taketho Pyinnya Padetha Journal, Vol. VI. Part II. University Press, Rangoon.
- Soe Thu (1980) *Taxonomy and Distribution of Burmese Marine Gastropods*. M.Sc Thesis (Unpublished) Department of Zoology, University of Rangoon.