



Nik Software

# Sharpener Pro™ 3.0

User Guide



© 2008 Tony Corbell

## Chapter 1

# Introduction

Introduction to Nik Software Sharpener Pro™ 3.0 and the User Guide



© 2008 David Saffir

## Introduction

Welcome to Nik Software Sharpener Pro 3.0, the most advanced and powerful sharpening solution for photographers. Sharpener Pro 3.0 eliminates the guesswork typically required for achieving superior printed results while providing the most control possible.

Based on continuous feedback from professionals in Nik Software's photographer community, Sharpener Pro 3.0 is a suite of proven controls to help photographers save time, get repeatable, professional results and de-complicate the mystery of sharpening images.

Sharpener Pro 3.0 is a new generation of digital sharpening tools for photographers, featuring on-image editing with U Point® powered control points, creative sharpening tools, as well as the most advanced algorithms designed specifically for sharpening digital photographs.

## What's in the User Guide

In addition to providing installation instructions, the User Guide shows you how to choose, control, and selectively apply filters, both with U Point powered control points and the updated Selective Tool. The User Guide also points out differences between Sharpener Pro 3.0 and Nik Sharpener Pro 2.0.

The typographical conventions used in this manual are:

- Sharpener Pro 3.0 processes and user interface components appear in Initial Caps, with first instances in **Bold Caps**. (In context-appropriate cases, later instances also appear in **Bold Caps**.)
- Specific control inputs appear in ***Bold Italic***. Control inputs can be menu items, buttons, or sliders. Where first instances coincide with specific control inputs, the term appears in ***Bold Italic***.



© 2008 Janice Wednt

## Chapter 2

# What's New in 3.0

New Features and Functionality in Sharpener Pro™ 3.0

## What's New in 3.0

Sharpener Pro™ 3.0 offers many enhancements and improvements over Nik Sharpener Pro™ 2.0, in four general categories:

- Interface
- U Point powered Control Points
- New creative sharpening features
- Selective Tool interaction

### Interface

Sharpener Pro 2.0 users will notice the extensively reworked interface in version 3.0, the result of both deep study into the look and feel that professional photographers expect in modern applications and requests from Nik Software users.

The new, completely resizable interface is a professional photographic tool: color-neutral with a medium-gray background and a strong focus on efficient workflow. Sharpener Pro 3.0 groups major controls close together for greater efficiency, letting you achieve excellent results in less time. *(Please see Chapter 7: Sharpener Pro 3.0 Interface.)*

### U Point Powered Control Points

U Point® technology lets photographers achieve exactly what they envision in an easy, fast, and intuitive manner. U Point-powered control points in Sharpener Pro 3.0 let you easily and selectively control where each filter is applied and to the images, without the use of complicated selections or layer masks. *(Please see Control Points in Chapter 5.)*

## New Creative Sharpening Features

The new creative sharpening features offer photographers the ultimate solution to enhance fine details and textures, drawing attention to desired areas within the image. *(Please see Creative Sharpening in Chapter 9.)*

### Selective Tool Interaction

Originally, the Selective Tool was used to specify when to apply a Sharpener Pro 2.0 filter selectively to an image. As the popularity of Sharpener Pro 2.0 grew, photographers discovered that the Selective Tool offered more convenient access to filters than the Filters menu.

Sharpener Pro 3.0 makes this access more convenient by giving you the choice of selectively applying the filter in the Filter Interface. This lets you launch the Sharpener Pro 3.0 interface from either the Selective Tool or the Filters menu. *(Please see Interaction with Sharpener Pro 3.0 in Chapter 10.)*



© 2008 Marina Despla

## Chapter 3

# Installation

Installing and Accessing Sharpener Pro™ 3.0

## Installation

Sharpener Pro 3.0 is a plug-in for Adobe® Photoshop®, Adobe Photoshop Lightroom®, Apple® Aperture™ and other Photoshop plug-in compatible applications. The installer provided with Sharpener Pro 3.0 automatically attempts to locate a copy of Adobe Photoshop, Adobe Photoshop Lightroom or Apple Aperture.

## Installing Sharpener Pro 3.0 and the Selective Tool

Before you install Sharpener Pro 3.0, please close all applications including Adobe Photoshop, Adobe Photoshop Lightroom, Apple Aperture or other image editing applications that will serve as host for Sharpener Pro 3.0. Please do not open any other applications during the installation process.

To begin installation:

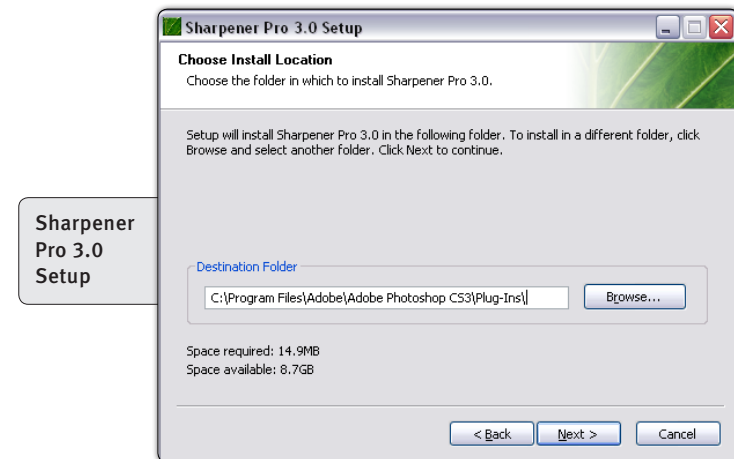
Double-click on the installation file provided either on your Sharpener Pro 3.0 CD or downloaded from the Nik Software web site. A window appears displaying the Sharpener Pro 3.0 Setup Wizard.



The installer walks you through the procedure.

After you have read the Read Me file and accepted the End User License Agreement, the installer prompts you for the plug-in location of your image editing application.

The installer attempts to locate the most recent installation of Adobe Photoshop or Adobe Photoshop Elements, and if successful, displays the recommended folder. When installing into Apple Aperture, the installer will automatically install into the appropriate location.



If the installer is unable to locate Adobe Photoshop or Adobe Photoshop Elements, or if you are using an image editor other than Adobe Photoshop, you must specify the appropriate installation path.

For Adobe Photoshop or Adobe Photoshop Elements, this location is the Plug-Ins folder located under the application's main folder.

For example:

### Adobe Photoshop

Windows – C:\Program Files\Adobe\Adobe Photoshop\Plug-Ins

Macintosh – Macintosh HD : Applications : Adobe Photoshop : Plug-Ins

### Adobe Photoshop Elements

Windows – C:\Program Files\Adobe\Adobe Photoshop Elements\ Plug-Ins

Macintosh – Macintosh HD : Applications : Adobe Photoshop Elements : Plug-Ins

Click **Browse...** to open the Browse for Folder window, then navigate to the appropriate folder.

**Note:** For guidance on the location of Plug-Ins in applications other than Adobe Photoshop or Adobe Photoshop Elements, please refer to your application's user manual.

After selecting the appropriate folder location, click Install. When the installation is complete, the final page of the installer appears.

If you want Sharpener Pro 3.0 to be automatically added to Lightroom's list of External Editors, leave the Add as External Editor for Lightroom box checked. The Add as External Editor for Lightroom option is only available if Lightroom is detected during installation. Instructions are provided within this chapter to manually add Sharpener Pro 3.0 as an external editor for Lightroom. *(Please see [Adding Sharpener Pro 3.0 to Lightroom as an External Editor.](#))*

If you want the Selective Tool to open each time Adobe Photoshop or Adobe Photoshop Elements launches, leave the Open the Nik Selective Tool automatically box checked. The Selective Tool lets you apply Sharpener Pro 3.0 effects by automating the layer systems in Adobe Photoshop or Adobe Photoshop Elements. *(Please see [Chapter 10: Selective Tool.](#))*

Uncheck this box to prevent the Selective Tool from opening each time Adobe Photoshop or Adobe Photoshop Elements launches. You can change this option within the Selective Tool settings interface. *(Please see [Chapter 12: Selective Tool Settings.](#))*

**Note:** The Selective Tool is available only with Adobe Photoshop and Adobe Photoshop Elements serving as host for Sharpener Pro 3.0.

Click **Finish** to complete the installation process.



## Accessing Sharpener Pro 3.0 and the Selective Tool in Adobe Photoshop

After completing the installation, launch your image editing application. In Adobe Photoshop and Adobe Photoshop Elements, Sharpener Pro 3.0 is accessed from the Filter menu.

To begin using Sharpener Pro 3.0:

1. Open the image that you would like to enhance.
2. Click the **Filter** menu.
3. Roll over the **Nik Software** sub-menu. A popup menu appears.
4. Select one of the Sharpener Pro 3.0 filters from the popup.
5. The choices are:
  - **Sharpener Pro 3.0: (1) RAW Presharpener**
  - **Sharpener Pro 3.0: (2) Output Sharpener**

The Sharpener Pro 3.0 interface appears, displaying the image specified in step 1 above. There are two filters within Sharpener Pro 3.0, RAW Presharpener and Output Sharpener. To apply a filter to the image, select the filter from the Filter menu, or select the filter directly from the Selective Tool. *(Please see Chapter 5: Sharpener Pro 3.0 Interface and Chapter 10: Selective Tool.)*

You can access the Selective Tool by navigating to one of the following locations:

### Adobe Photoshop

File > Automate

### Adobe Photoshop Elements

File > Automation Tools

## Accessing Sharpener Pro 3.0 in Apple Aperture

In Apple Aperture, Sharpener Pro 3.0 is accessed from the Images menu. To begin using Sharpener Pro 3.0 in Apple Aperture:

1. Highlight the image(s) that you wish to enhance with Sharpener Pro 3.0.
2. Click the **Images** menu.
3. Roll over the **Edit With** sub-menu. A popup menu appears.
4. Select one of the Sharpener Pro 3.0 filters from the popup.
5. The choices are:
  - **Sharpener Pro 3.0: (1) RAW Presharpener**
  - **Sharpener Pro 3.0: (2) Output Sharpener**

The Sharpener Pro 3.0 interface appears, displaying the image(s) specified in step 1 above.

## Adding Sharpener Pro 3.0 to Lightroom as an External Editor

If Lightroom is found during the installation of Sharpener Pro 3.0 for Lightroom, Sharpener Pro 3.0 can automatically be added as an external editor. Sharpener Pro 3.0 can also be manually added as an external editor providing easy access to edit your photos in Sharpener Pro 3.0. Follow the steps below to manually add Sharpener Pro 3.0 as an external editor.

1. Open the **Preferences** in Lightroom.
2. Click the **External Editing** tab.
3. In the Additional External Editor section select a desired File Format, Color Space, Bit Depth, Resolution, and Compression.

**Note:** Sharpener Pro 3.0 is only compatible with TIFF files (8 or 16-bit, with no compression or LZW compression).

4. Click on **Choose** to select an application. Navigate to the location of Sharpener Pro 3.0.  
On Windows, the default installation location for Sharpener Pro 3.0 will be:  
C:\Program Files\Nik Software\Sharpener Pro 3.0 for Lightroom\  
On Macintosh, the default installation location for Sharpener Pro 3.0 will be:  
Macintosh HD : Applications : Nik Software : Sharpener Pro 3.0 for Lightroom
5. Select the **Sharpener Pro 3.0** file and click **Choose**.
6. Under the **Preset** drop-down menu, select **Save Current Settings as New Preset...** and name the preset.

Sharpener Pro 3.0 can then be easily accessed under the **Photo** menu as a preset external editor.

## Accessing Sharpener Pro 3.0 in Lightroom

Once Sharpener Pro 3.0 is added to Lightroom as an external editor, Sharpener Pro 3.0 is accessed from the Photo menu.

To begin using Sharpener Pro 3.0 in Lightroom:

1. Highlight the image(s) that you wish to enhance with Sharpener Pro 3.0.
2. Click the **Photo** menu.
3. Roll over the **Edit In** sub-menu. A popup menu appears.
4. Select **Sharpener Pro 3.0** from the popup.
5. After selecting Sharpener Pro 3.0, select whether to **Edit Original**, **Edit a Copy**, or **Edit Copy with Lightroom Adjustments**.

**Note:** If Edit a Copy with Lightroom Adjustments is selected, the Copy File Options must be determined as well. Select the File Format, Color Space, Bit Depth, Resolution and Compression for the new file to be edited in Sharpener Pro 3.0\*.

\*Sharpener Pro 3.0 is only compatible with TIFF and JPEG files (8 or 16-bit with no compression or LZW compression).

6. Click Edit and the Sharpener Pro 3.0 interface appears, displaying the image(s) specified in Step 1 above.



© 2008 Kevin La Rue

## Chapter 4

# Workflow

Workflow and Tips for Enhancing Images

## Workflow

The order of steps involved in enhancing an image varies, depending on the image. In general, there are only a few guidelines to consider:

- Apply noise reduction, such as with Nik Software Dfine® 2.0, as early as possible in the process.
- Apply RAW Presharpening, if desired, with Nik Software Sharpener Pro 3.0's RAW Presharpener filter.
- Apply light and color enhancements with Nik Software Viveza™ (global, then local), and end with enhancements using Nik Software Color Efex Pro™ 3.0 or Nik Software Silver Efex Pro™.
- Apply output and creative sharpening with Nik Software Sharpener Pro 3.0's Output Sharpener filter.



© 2008 Margot Cavin

### Workflow Diagram



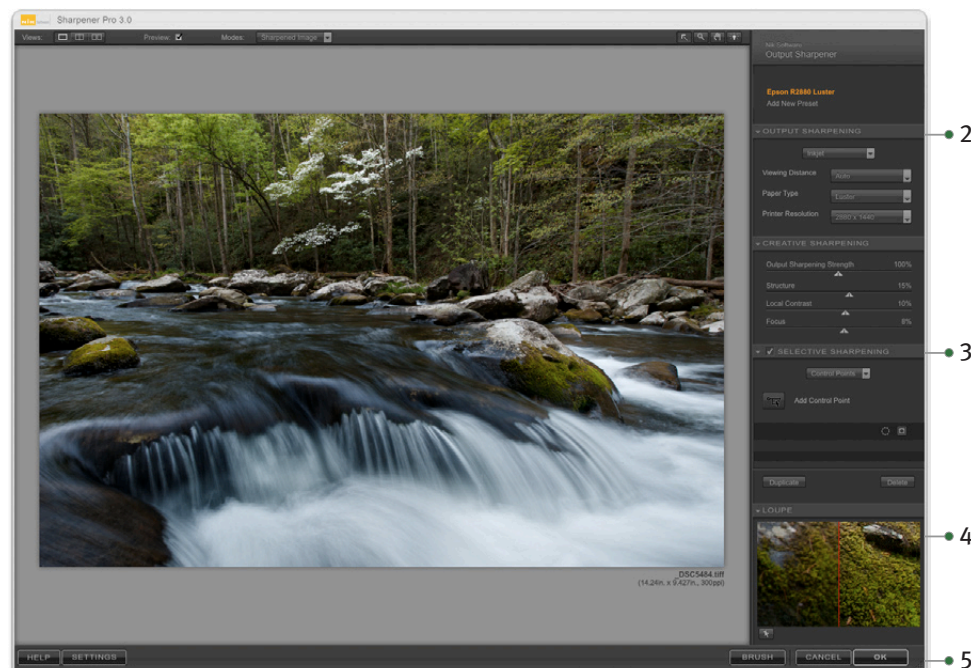
## Sharpener Pro 3.0 Workflow

Start by applying RAW presharpening with the RAW Presharpener filter, if desired. Next, after applying light, color, and stylizing effects, perform device specific output sharpening and creative sharpening with the Output Sharpener.

For best results in Sharpener Pro 3.0, perform the tasks below in the given order:

1. Select the filter to apply to the image from the Filter menu or the Selective Tool.
2. Adjust the filter controls.
3. Use U Point powered control points, to selectively apply or control the sharpening effect if desired.
4. Review the image in the Loupe.
5. Apply the filter.

**Note:** When using the RAW Presharpener, turn off any sharpening in the RAW processor. To achieve optimal results with the Output Sharpener, resizing should be done prior to performing final output sharpening as the size of the image will impact the amount of sharpening applied to the image.



Output Sharpener Interface in Adobe® Photoshop®

Photograph © 2008 Tony Sweet

## Creating Actions and Batch Processes (Adobe Photoshop Only)

Both the Sharpener Pro 3.0 RAW Presharpener and Output Sharpener filters can be applied as Actions and as part of a batch process within Adobe Photoshop.

All settings other than control points that were used when the filter was saved in the creation of the Action will be applied when the Action, batch process, or Droplet is used.

To begin, create an Action with the filter that you wish to apply in the Action, Batch Process, or Droplet. To create an Action, follow these steps below:

1. Open an existing file.
2. Open the **Actions** palette within Photoshop. If the actions palette is not visible within Photoshop, navigate to the Window menu and select Actions.
3. Click on the **Create New Action** button located in the bottom row of buttons of the Actions Palette.
4. Name the Action according to the filter that you wish to apply as an Action, Batch Process, or Droplet, and click **Record**.
5. Navigate to the **Filters** menu of Photoshop, and select the filter.
6. Adjust the sliders and controls within the filter, and click **OK**.
7. Stop the action by clicking on the square button located in the bottom row of buttons of the Actions Palette.

To start a Batch Process of a folder of images, navigate to the **File > Automate** menu and select **Batch**. Before beginning this process, it is recommended that you create a new folder on your desktop labeled with the action name and the word “Processed.” For Example: “Sharpener Pro 3.0—Output Sharpener Processed.” This folder will contain all of the images once the action has been applied to them.

To start the Batch Process, follow these steps:

1. Ensure that the action that was created earlier is indicated in the Action pull-down menu. If the correct action is not indicated, click on the pull-down menu and select the correct action.
2. Under source, indicate folder, and then click **Choose**. Navigate to the folder that contains all of the images that you want to apply the Batch Process to.
3. Under Destination, select **Folder**. Click **Choose** and navigate to the folder that was created on your desktop earlier. For example, navigate to the “Sharpener Pro 3.0—Output Sharpener Processed” folder.
4. Click **OK**.

The Batch Process will now begin and apply the filter from the Action to all of the images in the folder, and save a new copy of the image with the filter applied to the folder that was created on the desktop.

**Note:** When batch processing with Sharpener Pro 3.0, the sharpening effect is not applied to a separate layer. To apply Sharpener Pro 3.0 to a separate layer while recording the action, duplicate the layer prior to applying Sharpener Pro 3.0. This ensures that the batch process includes a new filtered layer for each image.

**Note:** When batch processing with Sharpener Pro 3.0, control points used in the initial filter settings will not be applied due to the location specific and image dependent nature of control points. All other filter settings will be used in the action. To selectively apply the filter with a batch process, use the Color Ranges method in the RAW Presharpener and Output Sharpener filters as the batch process will save the Color Ranges information used.

## Using Sharpener Pro 3.0 as a Smart Filter (Adobe Photoshop Only)

When working within Adobe Photoshop CS3 and CS4, Sharpener Pro 3.0 can be applied as a Smart Filter. Smart Filters enable you to adjust the filter's settings even after the filter interface has been closed. If saving the file as a PSD or layered TIFF, you can adjust the filter settings after the image and Photoshop have been closed, enabling a non-destructive workflow.

When working as a Smart Filter, the Brush button is disabled, and the filter will be applied to the active layer (even if the After Clicking OK setting is set to the Separate Layer option).

**Note:** Sharpener Pro 3.0 can only work as a Smart Filter feature with Adobe Photoshop CS3 and CS4 as the host.

**Note:** Perform any rotations or transforms to the image prior to applying Sharpener Pro 3.0 as a Smart Filter. Applying a rotation or transformation after applying Sharpener Pro 3.0 as a Smart Filter can result in a different filter effect. Also, any crops done to an image after converting the layer to a Smart Object will not be shown in the Sharpener Pro 3.0 interface, the image prior to crop will be displayed.

To use Sharpener Pro 3.0 as a Smart Filter:

1. Select the layer in the Layers Palette to apply Sharpener Pro 3.0 to.
2. Click the **Filter** menu.
3. Select **Convert for Smart Filters**.
4. Select the **Filter** menu again.
5. Rollover the **Nik Software** submenu. A pop-up menu appears.
6. Select one of the Sharpener Pro 3.0 filters.

Sharpener Pro 3.0 can be applied to multiple images when working in Lightroom and Aperture.

## Multiple Image Controls (Lightroom)

Sharpener Pro 3.0 can be applied to multiple images when working in Lightroom. To apply Sharpener Pro 3.0 to multiple images, follow the steps below:

1. Highlight the images you wish to enhance. Hold the Shift key to select a sequence of images or the Control/Command key to select individual images.
2. Click on the **Photo** menu.
3. Roll over the **Edit In...** sub-menu option. A popup will appear.
4. Select one of the Sharpener Pro 3.0 filters from the popup.

## Multiple Image Controls (Aperture)

Sharpener Pro 3.0 can be applied to multiple images when working in Aperture. To apply Sharpener Pro 3.0 to multiple images, follow the steps below:

1. Highlight the images you wish to enhance. Hold the Shift key to select a sequence of images or the Command key to select individual images.
2. Click on the **Images** menu.
3. Roll over the **Edit With** sub-menu option. A popup will appear.
4. Select one of the Sharpener Pro 3.0 filters from the popup.

When using Sharpener Pro 3.0 with multiple images, three new image controls are available. The new image controls available are Previous, Next and Save All. Please see the Multiple Image Controls (Lightroom & Aperture Only) section of the Filter interface chapter for more information.





© 2008 Corey Hilz

## Chapter 5

# U Point<sup>®</sup> Technology

Precise Selective Sharpening

Sharpener Pro 3.0 is powered by U Point® image editing technology. U Point technology enables you to modify sections of a photograph directly or control where an enhancement is being applied selectively all without having to go through the time-consuming process of making a selection or mask normally required in other software applications.

U Point technology provides precise and direct selective control, providing powerful yet simple photographic manipulation.

The U Point powered control points found within Sharpener Pro enable you to work with your images and selectively control and adjust the sharpening applied to the image without the need for complicated selections or masks.

Control points work by identifying an object based on a number of criteria. When you place your first control point, U Point technology identifies the unique elements of the object on which you place a control point, including its position, color, saturation, and texture. By identifying these elements, and in conjunction with the Size slider, the control point can determine the boundaries of the object in order to affect only that object and objects with like elements. With every control point that you apply to the image comes greater control over specific objects in the image. The additional control points ensure that the adjustments you make are being applied to the current object only, and placing a control point on an object with default settings prevents other control points from affecting that object.

Through a unique mixing function, the effects of the control points are applied throughout the image so as to create a natural-looking, seamless result.

For more information on U Point technology and how it works, please go to [www.upoint.com](http://www.upoint.com).



© 2008 Liliana Wright

## Chapter 6

# Sharpening Photographs

A Brief Explanation of Why and When to Sharpen Photographs with Sharpener Pro™ 3.0

Sharpener Pro 3.0 offers two filters for sharpening your images: the RAW Presharpener and the Output Sharpener.

## RAW Presharpener

RAW presharpening is the first step of a two-step sharpening process that some photographers have found can provide better quality in some images than a typical single-step sharpening process. When working in a two-step sharpening process, some small amount of sharpening is applied immediately after converting a RAW file, while a second, more aggressive amount of sharpening is applied directly before output. If you plan to utilize only a single sharpening step, only apply the Output Sharpener to your images.

The RAW Presharpener from Sharpener Pro 3.0 provides unique selective control utilizing U Point technology as well as advanced control over the presharpening process. When using the RAW Presharpener, images should be sharpened slightly to notice a small difference and a slightly enhanced clarity in the fine details of an image.

The RAW Presharpener filter should be used immediately after processing a RAW file and after any noise reduction has been applied. When using the RAW presharpening filter, ensure that sharpening has been turned off in your RAW conversion tool such as Adobe® Camera RAW, Adobe® Photoshop®, Apple® Aperture™, Capture NX 2, or Canon® Digital Photo Pro.

## Output Sharpener

The Sharpener Pro 3.0 Output Sharpener filter is designed to sharpen based on the loss of detail caused through different output methods, eliminating guesswork normally associated with sharpening for output. Covering the widest spectrum of output devices including display, inkjet, continuous tone, half tone, and hybrid tone techniques, the Output Sharpener filter provides optimal controls for creating perfectly sharpened images for any output. The highest quality sharpening and the power to selectively apply the sharpening with the use color ranges or of U Point® powered control points make the Output Sharpener filter the professional's choice for sharpening their images for output.

In addition to the U Point powered control points, the Output Sharpener filter also offers new controls for creatively sharpening images to enhance fine details and textures. The creative sharpening techniques in Sharpener Pro 3.0's Output Sharpener provide photographers with the a full toolset for creatively sharpening images to draw focus and attention to specific areas of your images while also precisely sharpening images.

The Output Sharpener filter should be used as the very last step in the workflow, after any cropping or resizing. Use the Output Sharpener filter to prepare your file for the output device of your choice. If applying the sharpening and then saving, it is recommended that you note in the file name that sharpening has been applied to that image.

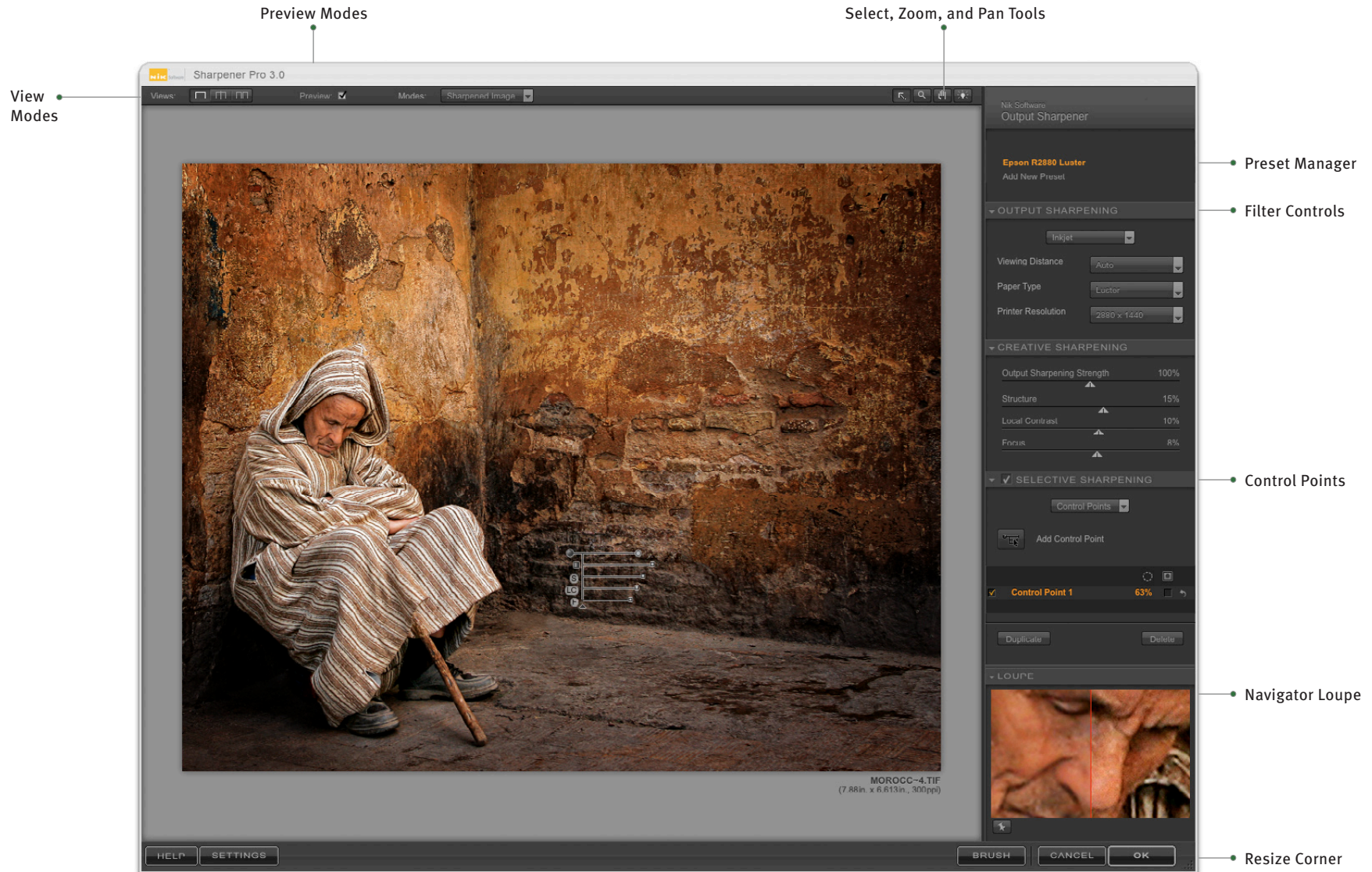


© 2008 Pete Wright

## Chapter 7

# Sharpener Pro™ 3.0 Interface

Overview of the New Sharpener Pro 3.0 Interface



Output Sharpener Interface in Adobe® Photoshop®

Photograph © 2008 Nadia Salameh

## View Modes



Sharpener Pro 3.0 offers three modes for viewing filter effects on the active image:

### Single Image View



The image is displayed with the filter's effect applied across the **Image Preview** area. To see the effect before and after, toggle Preview on and off with the **Preview checkbox**.



### Split View



The image is displayed with a red line running either vertically or horizontally through it. The portion to the left or above the red line shows the image prior to applying the filter; the portion to the right or below the red line shows the image after the filter has been applied.

You can move the image with the **Pan Tool** or click and drag the red line to observe the effect on the image's detail.



Click the **Rotate Preview** button to alternate between vertical and horizontal split.

### Side-by-side Preview



Two separate previews appear. The portion on the left or on top shows the image prior to applying the filter; the portion on the right or at bottom shows the image after the filter has been applied.

The previews are linked for zooming and panning. This lets you see the before- and after-images as a whole, or at the fine-detail level.



Click the **Rotate Preview** button to alternate between vertical and horizontal layout.

## Preview

Preview lets you toggle on and off a preview of the filter effects applied to the active image.

Preview:

- Click the **Preview** checkbox to alternate between displaying and hiding the effects

## Preview Modes

Modes: Sharpened Image ▾

Both the RAW Presharpener and the Output Sharpener filters offer different modes to preview the sharpening effect on your image. These previews can help you determine where the sharpening has been applied by the selective tools as well as to preview to the final output sharpening result.

The RAW Presharpener and the Output Sharpener provide the following controls within the Modes pull-down menu:

### Sharpened Image

In this default mode, the image will be displayed with the sharpening effect applied.

### Sharpening Soft Proof (Output Sharpener Only)

The Sharpening Soft Proof in the Sharpener Pro 3.0 Output Sharpener filter provides the ability to preview the final result on your monitor, as it will be created by your output device. This enables you to make decisions on the amount of sharpening to apply without having to print out the image. Use the **Sharpening Soft Proof** preview mode to use the Soft Proof functionality.

Utilizing the Sharpening Soft Proof will automatically resize the image to resemble the image as it would be viewed when printed at a normal viewing distance. When the Sharpening Soft Proof is enabled, you can adjust the Output Sharpening, Creative Sharpening, and Selective Sharpening controls to fine tune the image for your desired sharpening level.

## Effect Overlay

The original image appears with an overlay showing where the selective sharpening effect is applied, according to the color ranges or control points added to the image. You can adjust the filter controls or control points while in the Effect Overlay mode.



A red overlay indicates those areas enhanced by the filter; no visible overlay (i.e., the original colors of the image) indicates unaffected areas.

## Effect Mask



This mode displays the mask created automatically by the color ranges and the control points used in the image. You can adjust the filter controls or control points while in the Effect Mask mode.

White indicates those areas enhanced by the filter, black indicates unaffected areas, and gray indicates moderately affected areas.



## Select Tool



The **Select Tool** lets you select and interact with **Control Points**.

### SELECT SHORTCUTS

Press the **A** key to switch to this tool.

Ctrl (Windows) / Command (Mac) to temporarily switch to this tool

## Zoom Tool



The **Zoom Tool** lets you zoom in and out of the active image. Select this tool, then click on the area of the image that you want to magnify. To zoom out, press and hold the Alt (Windows) or Option (Macintosh) key and click on the image.

Sharpener Pro 3.0 offers three zoom states:

- **Zoom to Fit** to see the entire image within the **Image Preview** and automatically adjust the zoom factor as you change the size of the interface.
- **100%** to show the actual pixel details.
- **300%** to zoom even further into the image and view fine pixel detail.

### ZOOM SHORTCUTS

Press the **Z** key to switch to this tool.

Ctrl (Windows) / Command (Macintosh) + Spacebar to temporarily switch to this tool

Ctrl (Windows) / Command (Macintosh) + '+' to zoom in one level

Ctrl (Windows) / Command (Macintosh) + '-' to zoom out one level

Ctrl (Windows) / Command (Macintosh) + 0 to Zoom to Fit

Ctrl (Windows) / Command (Macintosh) + Alt (Windows) / Option (Macintosh) + 0 to zoom to 100%

## Pan Tool



The **Pan Tool** lets you reposition the image while zoomed into the 100% or 300% views. When the **Loupe** tool is enabled, the mouse pointer becomes a Pan Tool to let you reposition the content of the Loupe tool.

### PAN SHORTCUTS

Press the **H** key to switch to this tool.

**Spacebar** to temporarily switch to this tool

## Background Color Selector



The **Background Color Selector** tool lets you change the color of the background surrounding the image. The three choices are Light Gray, Medium Gray, and Dark Gray.

## Image Preview

The **Image Preview** area displays the active image and related information beneath the image.



### Image

The active image is displayed with the view, preview mode, background and zoom state you have configured. This area has three zoom states: Zoom to Fit, 100%, and 300%, controlled with the **Zoom** Tool or with keyboard shortcuts. (Please see Zoom Tool above.)

### Image Info

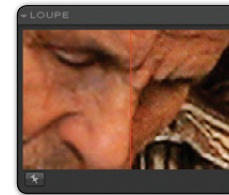
The filename appears below the image. This is visible in the Zoom to Fit state. The image height, width, and resolution will also be displayed under the filename.

## Filter Controls

Sharpener Pro 3.0 has two separate filters to provide sharpening through the photographic workflow. The available Sharpener Pro 3.0 filters are the RAW Presharpener and the Output Sharpener. The filter controls change to match the filter selected. *(For a complete explanation, please see the RAW Presharpener and Output Sharpener chapters.)*

## Navigator Loupe

The **Navigator Loupe** is one of the new interface features in Sharpener Pro 3.0. This tool ensures that the appropriate information is displayed depending on the state of the Image Preview. In the Zoom to Fit view, the Loupe mode displays details under the mouse pointer at 100%, and image detail information before and after the filter is applied. When zoomed to 100% or 300%, the Navigator mode is displayed, giving you a bird's eye view of where you are currently in the image. The view switches automatically between Navigator and Loupe for efficient workflow.



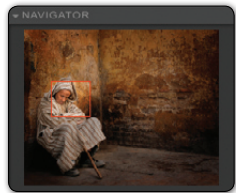
### Loupe Mode

With the Image Preview in the Zoom to Fit state, the **Navigator** switches to Loupe mode. A vertical red line bisects the image, the left-hand section displaying the image prior to applying the filter and the right-hand side, the image after filter application.

This ensures that you can always see the image detail at 100% while reviewing the filter's effect where you position your mouse in the Preview.

To lock in place the area displayed in the Loupe, click the **pushpin** icon in the lower-left corner of the Loupe, then click on the area of the image you want to keep inside the Loupe. To unlock the area, click the **pushpin** icon again. Alternately, right-click (Windows) or Control-click (Macintosh) to toggle the **lock in place** function.

To pan within the Loupe display, click and drag the image. You can also click and drag the red line to adjust the relative size of the before and after sections in the Loupe.



### Navigator Mode

When you switch the Zoom to Fit state to 100% or 300%, the Navigator Loupe switches to the Navigator mode and a red rectangle indicates the area of the image currently displayed in the Image Preview. Click on the area of the image in the Navigator that you would like to display in the Image Preview.

## Filter Controls

The **Brush** and **OK/Save** buttons process and apply the specified filter's effect to the active image. The **Cancel** button discards any settings specified in the current session, and closes Sharpener Pro 3.0, without changing the image.

### Brush (Adobe Photoshop Only)

Click **Brush** to apply the filter's effect to a separate layer and then selectively paint the effect in, using the Selective Tool to automatically create and modify a layer mask. *(Please see Chapter 10: Selective Tool.)*

### Cancel

Click **Cancel** to prevent any effect from being applied to the image, close the current Sharpener Pro 3.0 session, and return to your image editing application.

### CANCEL SHORTCUT

Press the **Esc** key to cancel.

### OK (Adobe Photoshop) / Save (Aperture and Lightroom)

Click **OK/Save** to apply the specified filter to the image(s), close the current Sharpener Pro 3.0 session, and return to your image editing application. Sharpener Pro 3.0 also gives you the option of applying the filter to a separate layer or to the current layer in Adobe Photoshop or Photoshop Elements. *(Please see Chapter 11: Filter Interface Settings.)*

### OK/SAVE SHORTCUT

Press **Enter** (Windows) / **Return** (Macintosh) key to apply the filter.

## Multiple Image Controls (Lightroom & Aperture Only)

When using Sharpener Pro 3.0 with multiple images, three new image controls are available. The new image controls available are Previous, Next and Save All.

### Previous

The Previous button will go to the image previously enhanced within the current Sharpener Pro 3.0 session.

### Next

The Next button will proceed to the next selected image in the current Sharpener Pro 3.0 session.

### Save All

The Save All button will apply Sharpener Pro 3.0 to the open images, and close the current Sharpener Pro 3.0 session.

### SAVE ALL SHORTCUT:

Press the **Enter** (Windows) / **Return** (Macintosh) key to apply Sharpener Pro 3.0 to the selected images in the current Sharpener Pro 3.0 session.



© 2008 Tony Sweet

## Chapter 8

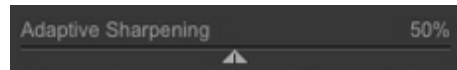
# RAW Presharpener Filter Controls

Sharpening Images in the Beginning of the Workflow

---

The RAW Presharpener filter is an optional step in an image editing workflow and is designed to be the first stage of sharpening your images, and should be done near the beginning of your workflow. Apply the RAW Presharpener immediately after any noise reduction has been applied. The RAW Presharpener filter adds a small amount of sharpening and was designed to sharpen your images for any loss of detail through digital capture without creating any sharpening artifacts or enhancing the visibility of noise. If using the RAW Presharpener filter, please ensure to turn off any sharpening during image capture and the RAW processing.

### Adaptive Strength



The **Adaptive Strength** slider controls the amount of sharpening applied to the whole image. Decreasing this slider will reduce the amount of sharpening applied to the whole image while increasing this slider will increase the amount of sharpening applied to the whole image.

### Edge Balance



The **Edge Balance** will control where the sharpening is applied. With the Edge Balance slider, adjusting the slider towards **Sharpen Areas** will sharpen those regions between the edges of objects more than the edges, while adjusting the slider towards **Sharpen Edges** will sharpen the edges more than the regions between the edges of objects. In the middle, the sharpening is applied equally between the areas and edges.

### Image Quality



The **Image Quality** control has two options for adjusting how the sharpening is applied.

- **Normal** – An image with normal image quality will sharpen based on the normal information presented in an image.
- **High ISO** – The High ISO image setting will work to prevent any noise left in the image from being enhanced by the sharpening process

## Selective Sharpening

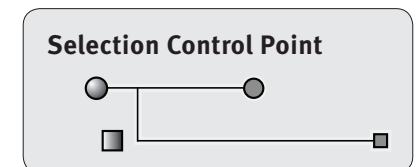
The Selective Sharpening section of the RAW Presharpener filter controls the selective sharpening applied to the image. The Selective Sharpening section can be toggled on and off with the preview checkbox to help show the effect of just the Selective Sharpening techniques applied to the image.



The RAW Presharpener filter has two methods for selectively applying the sharpening to the image: **Control Points** and **Color Ranges**.

### Control Points

The first method of selectively applying the sharpening in the Sharpen Pro 3.0 RAW Presharpener filter, Control Points, is based on U Point® technology.



U Point technology lets photographers identify and isolate objects within a photograph by placing a control point on the object or area to be affected. By analyzing color, tonality, detail and location, U Point determines where to apply certain effects, according to the photographer's needs. *(For more information on U Point technology, please visit [www.upoint.com](http://www.upoint.com).)*

All control points within the active image communicate with each other, providing continuity of control over multiple objects throughout the image.

When collapsed, this section provides access to the **Add 0% Control Point** and **Add 100% Control Point** buttons, enabling you to use U Point powered control points to specify where an image's effect is applied within the image, without using masks and selections.

When expanded, this section provides you with a list of the control points added to the image, as well as controls for those control points.

Each control point in the RAW Presharpener filter can control the extent to which the selected object is affected by a filter. This lets you add control points and then decide the amount of sharpening to apply to each object.

Each control point has two sliders:

- The top slider, **Size**, controls the size or reach of the control point. Increase this control to enlarge the control point's reach, or decrease to reduce its reach, as indicated by an expanding or contracting circle

- The bottom slider, **Opacity**, controls the extent to which the effect is added to the image. At 100%, the filter's full effect is applied to the selected object; at 0%, the selected object retains its original colors and details.

#### Add 0% Control Point



Click this button to add a control point preset to no filter effect (i.e., 0% opacity). The mouse pointer changes, indicating that you can place a control point on the image. After placing the control point on the image, you can adjust the Opacity slider.

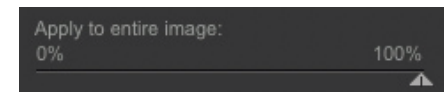
#### Add 100% Control Point



Click this button to add a control point preset to the full effect of the filter (i.e., 100% opacity). The mouse pointer changes, indicating that you can place a control point on the image. After placing the control point on the image, you may adjust the filter's effect with the Opacity slider.

If the first control point added is a 100% Control Point, the **Apply to entire image** slider will automatically move to 0% to ensure that the filter effect is applied only at that control point. You can then adjust the slider manually.

#### Apply to entire image

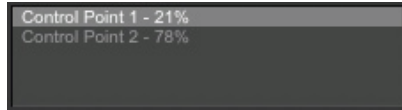


This slider lets you specify how much of the current effect to apply across the entire image.

Any control points added to the image override the effect of this slider for the object they select. For example, if you specify a filter effect on an entire landscape photograph, set **Apply to entire image** to 100%, and then later add a control point to the sky at 0% opacity, the filter will have no effect on the sky.

### Control Point Details

This area shows you the details for each of the control points currently added to the image.



Click on a control point listed in this section to select it in the image, and click on the percentage displayed to type in a new value manually.

### Duplicate

To create a duplicate copy of a control point, click the **Select** tool, and then click on the control point to be duplicated. Next, click on the **Duplicate** button. An exact copy of the selected control point will be placed on the image and you can then reposition the new control point by clicking and dragging it to a new location.

### DUPLICATE SHORTCUTS:

Ctrl (Windows) / Command (Macintosh) + D to duplicate in place

Alt (Windows) / Option (Macintosh) + Left-click to duplicate and move a control point

### Delete

Click the Delete button to remove the selected control points from the image and set the **Apply to entire image** slider to 100%. Alternatively, select a control point and then click the Delete key on the keyboard to remove the selected control point.

To adjust or delete multiple control points or adjust their controls in parallel, first select the desired control points by one of the following methods:

- Click the **Select** Tool, then left-click, hold and draw a bounding box containing the desired control points, or
- Hold the **Shift** key down and click on the control points to be selected.

With multiple control points selected, you can delete all or modify the filter controls of all control points at the same time by adjusting those of only one.

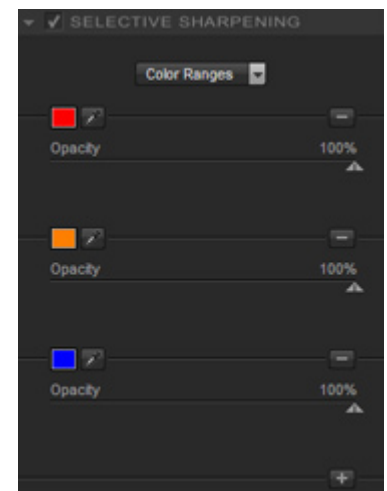
After adding control points to the image and applying different levels of opacity to each object, you can look at the **Effect Overlay** or **Effect Mask** to see how the filter is affecting the image. *(Please see [Effect Overlay and Effect Mask below.](#))*

**Note:** Control points are not saved in a settings file and therefore cannot be applied in a batch process.

### Color Ranges

The second method of selectively sharpening within the Sharpener Pro 3.0 RAW Presharpener filter is based on individual **Color Ranges**.

This method is most effective when affecting large objects or if you want to uniformly sharpen based on color. Additionally, this is the recommended method to use if you would like to selectively sharpen noise in a batch process.





You can have as few as two color ranges selected, with no maximum to the number possible.

### Color Patch

The **Color Patch** will display the color considered for sharpening for the current color range. Hold the mouse over the patch to see a read-out of the RGB color values for the color selected.

Click on the **Color Patch** to call up the Color Picker from your image editing application to set a color directly.

### Eyedropper

The **Eyedropper** will let you select a color from the image displayed within the Sharpener Pro 3.0 RAW Presharpener interface. After selecting this color, you can then determine how much sharpening to apply against any objects that are based on that color.

### Opacity

The **Opacity** slider controls the amount of sharpening applied to the selected Color Range. Decreasing this slider will reduce the amount of sharpening applied while increasing this slider will increase the amount of sharpening applied.

Change the amount of the **Opacity** slider to balance sharpening detail and enhancing noise, the higher the value of the Opacity slider, the more sharpening will be applied to the selected color range in the image.

### Add Color Range

Click on this button to add an additional color range to the image.

### Delete Color Range

Click on this button to delete a color range. The **Delete Color Range** buttons will disappear if you reach only two color ranges, which is the minimum. As soon as you click on the **Add Color Range** button, the **Delete Color Range** buttons will appear again for all color ranges.



© 2008 Victor Ha

## Chapter 9

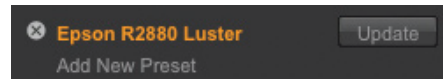
# Output Sharpener Filter Controls

Perfectly Sharpen Images for Output and Eliminate Guesswork

The Sharpener Pro 3.0 Output Sharpener is the last step in the photographic workflow and sharpens images based on the specific device that will be used to output the image, eliminating the guesswork generally associated with sharpening and providing the precise amount of sharpening needed to retain detail without over-sharpening the image.

## Output Sharpening Preset Manager

The Output Sharpening Preset Manager provides photographers with the ability to create and save presets for quick and easy applications of output sharpening. Saving a preset in the Output Sharpener filter will retain all sharpening information set in the Output Sharpening and in the Creative Sharpening; controls within the Selective Sharpening section will not be retained.



To create an Output Sharpening Preset, set the Output Sharpening controls, then apply any global creative sharpening with the Creative Sharpening controls, and finally click Add New Preset in the Output Sharpening Preset Manager.

Other controls available in the Output Sharpening Preset Manager are the ability to update presets and delete presets. Roll over a preset to display either the update or delete buttons. Click on the Update button to update the preset with the current settings. Click on the Delete button to remove the preset from the list of available presets.

## Output Sharpening

The **Output Sharpening** provides a list of the output device options that the Output Sharpener filter can sharpen for. The output device options are:

- **Display** – Sharpens for display devices such as monitors and projectors.
- **Continuous Tone** – Sharpens for continuous tone printers such as prints found at photographic labs using silver-halide based papers and dye-sublimation printers.
- **Halftone** – Sharpens for halftone printers such as large web- or sheet-fed presses.
- **Inkjet** – Sharpens for inkjet printers such as Canon, Epson, and HP.
- **Variable Tone** – Sharpens for printers that use a hybrid of inkjet and halftone screening techniques.

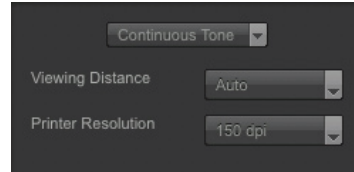
## Display Sharpening Controls

When **Display** is the device chosen from the Output Sharpening menu, use the **Adaptive Sharpening** slider to control the amount of sharpening applied to the entire image.

Then use the **Output Sharpening Strength** in the Creative Sharpening controls section to control the opacity of the sharpening applied to the entire image.

## Continuous Tone Sharpening Controls

When **Continuous Tone** is the device chosen from the Output Sharpening menu, the following controls are available:



- **Viewing Distance** – The Viewing Distance pull-down menu will factor into how much sharpening is applied to the current image. The **Auto** setting will automatically determine the viewing distance based on the diagonal of the image’s height and width, which is commonly accepted as the normal viewing distance for a photograph.

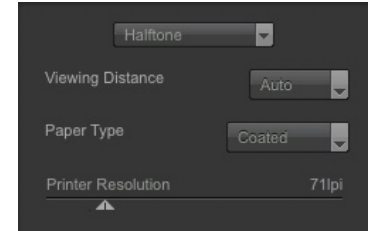
The Auto setting is recommended, but if the image is not going to be viewed at the normal viewing distance for that size image options are provided to sharpen based on a preset viewing distance.

- **Printer Resolution** – The **Printer Resolution** selects the resolution that the printer will print at. Use the Printer Resolution pull-down menu to select the appropriate resolution. Please contact your lab or printer’s user manual for the appropriate resolution to select.

If the appropriate resolution is not found within the pull-down menu, please select one of the **User Defined** options and then enter the appropriate resolution in the box provided.

## Halftone Sharpening Controls

When **Halftone** is the device chosen from the Output Sharpening menu, the following controls are available:



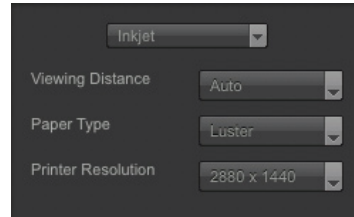
- **Viewing Distance** – The **Viewing Distance** pull-down menu will factor into how much sharpening is applied to the current image. The **Auto** setting will automatically determine the viewing distance based on the diagonal of the image’s height and width, which is commonly accepted as the normal viewing distance for a photograph.

The Auto setting is recommended, but if the image is not going to be viewed at the normal viewing distance for that size image, options are provided to sharpen based on a preset viewing distance.

- **Paper Type** – The **Paper Type** pull-down menu selects what type of paper medium the image will be printed on. The options are **Newsprint**, **Uncoated**, **Coated**, and **High Gloss**, with Newsprint applying the most sharpening and High Gloss applying the least.
- **Printer Resolution** – The **Printer Resolution** selects the resolution that the print will be created at. For Halftone presses, the resolution is measured in Lines per Inch and Lines per Centimeter (lpi or lpcm). Please contact your pre-press contact for information on the appropriate resolution to select.

## Inkjet Sharpening Controls

When **Inkjet** is the device chosen from the Output Sharpening menu, the following controls are available:



- **Viewing Distance** – The

**Viewing Distance** pull-down menu will factor into how much sharpening is applied to the current image. The **Auto** setting will automatically determine the viewing distance based on the diagonal of the image's height and width, which is commonly accepted as the normal viewing distance for a photograph.

The Auto setting is recommended, but if the image is not going to be viewed at the normal viewing distance for that size image, options are provided to sharpen based on a preset viewing distance

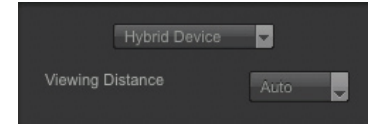
- **Paper Type** – The **Paper Type** pull-down menu selects what type of paper medium the image will be printed on. The options are **Textured & Fine Art, Canvas, Plain Paper, Matte, Luster,** and **Glossy**, with Textured & Fine Art applying the most sharpening and Glossy applying the least.

- **Printer Resolution** – The **Printer Resolution** selects the resolution that the print will be printed at. Choose from the drop down menu the resolution that the printer will be printing at. Please refer to your printer's manual to determine the appropriate resolution to select.

If the appropriate resolution is not found within the pull-down menu, please select one of the **User Defined** options and then enter the appropriate resolution in the two boxes provided.

## Hybrid Device Sharpening Controls

When **Hybrid Device** is the device chosen from the Output Sharpening menu, the following controls are available:



- **Viewing Distance** – The **Viewing Distance** pull-down menu will factor into how much sharpening is applied to the current image. The **Auto** setting will automatically determine the viewing distance based on the diagonal of the image's height and width, which is commonly accepted as the normal viewing distance for a photograph.

The Auto setting is recommended, but if the image is not going to be viewed at the normal viewing distance for that size image, options are provided to sharpen based on a preset viewing distance

## Creative Sharpening

The Creative Sharpening controls can be used to control both the strength of the output specific sharpening and apply any global creative sharpening to the image. Control points can later be used to selectively adjust the amounts of each of these controls on any object or area within the image.



- **Output Sharpening Strength** — The Output Sharpening Strength slider is the main global sharpening control in the Output Sharpener filter, which controls the strength of the output sharpening applied to the overall image. Increasing the Output Sharpening Strength slider will increase the sharpening applied to the image and decreasing the Output Sharpening Strength slider will decrease the overall strength of the sharpening applied to the image.
- **Structure** — Controls the fine details and textures within the image. Increasing this slider emphasizes fine details throughout the image while decreasing this slider reduces the appearance of fine details for smoother surfaces.
- **Local Contrast** — Controls local contrast throughout the entire image. Increasing this slider will increase the edges of small objects throughout the image while decreasing this slider will lower the contrast of edges, applying a diffusing effect.
- **Focus** — Controls the adaptive sharpening of fine image details and large areas of the image. Increasing this slider will increase the overall strength of the adaptive sharpening and decreasing this slider will decrease the adaptive sharpening, applying a slight blurring effect to the image.

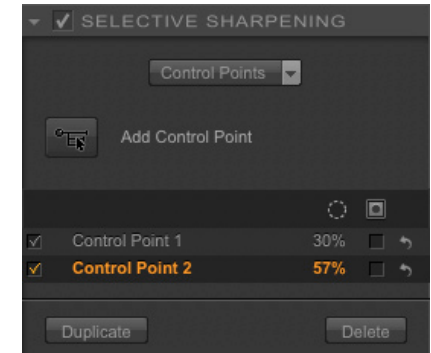
## Selective Sharpening

The Selective Sharpening section of the Output Sharpener filter controls the selective sharpening applied to the image. The Selective Sharpening section can be toggled on and off with the preview checkbox to help show the effect of just the Selective Sharpening techniques applied to the image.

The Output Sharpener filter has two methods for selectively applying the sharpening to the image, **Control Points** and **Color Ranges**.

### Control Points

The first method of selectively applying the sharpening in the Sharpener Pro 3.0 Output Sharpener, Control Points, is based on U Point® technology.



U Point technology lets photographers identify and isolate objects within a photograph by placing a control point on the object or area to be affected. By analyzing color, tonality, detail and location, U Point determines where to apply certain effects, according to the photographer's needs. (For more information on U Point technology, please visit [www.upoint.com](http://www.upoint.com).)

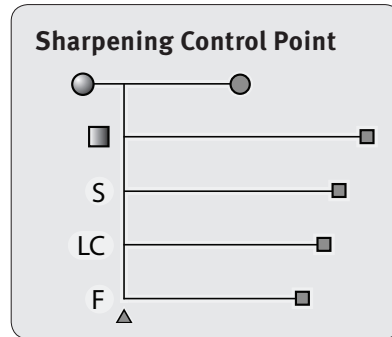
All control points within the active image communicate with each other, providing continuity of control over multiple objects throughout the image. When collapsed, this section provides access to the **Add Control Point** button, enabling you to use U Point powered control points to specify where the sharpening is applied within the image and the strength of the sharpening applied within the image, without using masks and selections.

When expanded, this section provides you with a list of the control points added to the image, as well as controls for those control points.

Each control point in the Output Sharpener can control the extent to which the selected object is affected by the output sharpening and

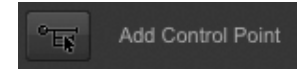
which creative sharpening techniques are applied to the selected object. This lets you add control points and then decide which objects to apply sharpening to as well as to control the amount of sharpening on each object independently

Each control point has five sliders:



- The top slider, **Size**, controls the size or reach of the control point. Increase this control to enlarge the control point's reach, or decrease to reduce its reach, as indicated by an expanding or contracting circle.
- The second slider, **Output Sharpening Strength**, controls the amount of overall output device specific sharpening applied to the selected object or area.
- The **Output Sharpening Strength/All triangle** will toggle the available sliders on the control point between the Output Sharpening Strength slider and all of the sliders available.
- The third slider, **Structure**, controls the amount of structure applied to the selected object or area.
- The fourth slider, **Local Contrast**, controls the amount of local contrast applied to the edges of the selected object or area.
- The fifth slider, **Focus**, controls the amount of adaptive sharpening applied to the selected object or area.

### Add Control Point

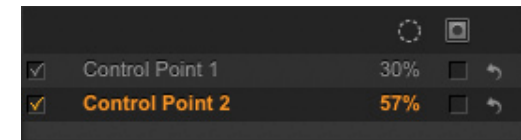


Click this button to add a control point to selectively control the sharpening applied to an object or area. The mouse pointer changes, indicating that you can place a control point on the image. After placing the control point on the image, you can adjust the sharpening controls.

By default, control points added to the image will have all sliders set to their default values. The default values will override the global Creative Sharpening controls and apply only the default Output Sharpening Strength to the object or area selected by the control point.

To place a control point with the same slider settings as found in the Creative Sharpening section, change the Default Control Point Settings option within the Setting to Retain Creative Sharpening Settings. Any control point added to the image will then apply the global Creative Sharpening values as the default control point values, providing a useful starting point for the selected object which can then be fine tuned using the control point's sliders.

### Control Point List



The control point List shows all of the control points applied to the image. The control point List section provides you with basic information about each control point, and options to show the selections and previews of the control points.

### Show Effect Preview Column

After adding a control point to the image, the checkbox within the Show Effect Preview Column will be enabled. By un-checking

this box, you can disable that control point's effect on the image.

### Size Column

The Size column will display the value of each control point's Size slider.

### Show Selection Column

The Show Selection Column enables you to show the selection of a control point. Checking the box next to a control point in the Show Selection Column will show only selected control points' selections. Areas inked in white are being affected by the control point, while areas inked in black are not being affected, with grey areas being partially affected. Click on the Show Selection Column header to show or hide the selection for all of the control points.

### Reset Control Point Column

The Reset control point Column enables you to reset the sliders back to the default settings for any individual Control Point.

### Duplicate



To create a duplicate copy of a control point, click the **Select** tool, and then click on the control point to be duplicated. Next, click on the **Duplicate** button. An exact copy of the selected control point will be placed on the image and you can then reposition the new control point by clicking and dragging it to a new location.

### DUPLICATE SHORTCUTS:

Ctrl (Windows) / Command (Macintosh) + D to duplicate in place

Alt (Windows) / Option (Macintosh) + Left-click to duplicate and move a control point

### Delete

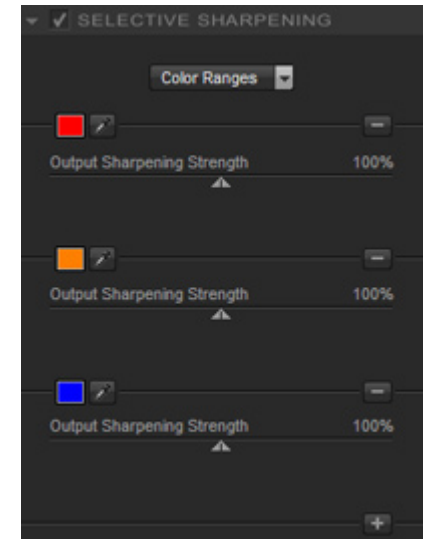


To remove a control point, click the **Select** tool, then click on the control point to be removed. Then either click the **Delete** button or press the **Delete** key on your keyboard.

With multiple control points selected, you can delete all or modify the filter controls of all control points at the same time by adjusting those of only one.

To adjust or delete multiple control points or adjust their controls in parallel, first select the desired control points by one of the following methods:

- Click the **Select** Tool, then left-click, hold and draw a bounding box containing the desired control points, or
- Hold the **Shift** key down and click on the control points to be selected.



After adding control points to the image and applying different levels of sharpening to each object, you can look at the **Effect Overlay** or **Effect Mask** to see how the filter is applied the image. *(Please see Effect Overlay and Effect Mask.)*



## Color Ranges

The second method of sharpener within the Sharpener Pro 3.0 Output Sharpening is based on individual **Color Ranges**.

This method is most effective when affecting large objects or if you want to uniformly sharpen based on color. Additionally, this is the recommended method to use if you would like to selectively sharpen noise in a batch process.

You can have as few as two color ranges selected, with no maximum to the number possible.

### Color Patch

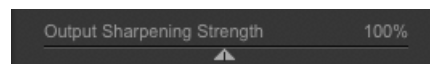
The **Color Patch** will display the color considered for sharpening for the current color range. Hold the mouse over the patch to see a read-out of the RGB color values for the color selected.

Click on the **Color Patch** to call up the Color Picker from your image editing application to set a color directly.

### Eyedropper

The **Eyedropper** will let you select a color from the image displayed within the Sharpener Pro 3.0 Output Sharpener interface. After selecting this color, you can then determine how much sharpening to apply against any objects that are based on that color.

### Output Sharpening Strength



The **Output Sharpening Strength** slider controls the amount of Output Sharpening applied to the selected color range. Decreasing this slider will reduce the amount of sharpening applied to the

selected color range while increasing this slider will increase the amount of sharpening applied to the selected color range.

Change the amount of the **Output Sharpening Strength** slider to balance sharpening detail and enhancing noise, the higher the value of the Strength slider, the more sharpening will be applied to the image.

### Add Color Range

Click on this button to add an additional color range to the image.

### Delete Color Range

Click on this button to delete a color range. The **Delete Color Range** buttons will disappear if you reach only two color ranges, which is the minimum. As soon as you click on the **Add Color Range** button, the **Delete Color Range** buttons will appear again for all color ranges.



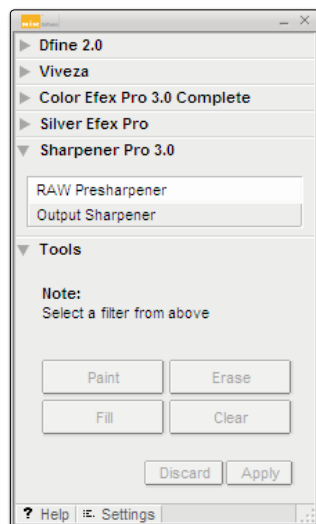
© 2008 Liliana Wright

## Chapter 10

# Selective Tool

Applying the Filter's Effect Selectively in Adobe Photoshop

## Selective Tool



The Selective Tool automates the creation of layers and layer masks within Adobe Photoshop and Adobe Photoshop Elements, letting you apply any available Sharpener Pro 3.0 filters.

If Dfine® 2.0, Viveza™, Color Efex Pro 3.0™ or Silver Efex Pro™ is already installed, the Selective Tool installed by Sharpener Pro 3.0 will simply update the one installed previously, letting you access any Nik Software product from the same palette.

The Selective Tool can be used with pressure-sensitive tablets such as the Wacom® Pen Tablet to apply the Sharpener Pro 3.0 filter with pressure-sensitivity.

**Note:** *The Selective Tool is available only with Adobe Photoshop and Adobe Photoshop Elements serving as host for Sharpener Pro 3.0.*

**Note:** *The Selective Tool cannot be used when creating a Photoshop Action. In order to create a Photoshop Action, please select Sharpener Pro 3.0 from the Filters menu.*

## Interaction with Sharpener Pro 3.0

Click the filter name in the Sharpener Pro 3.0 section of the Selective Tool window to launch that filter.

If you click the **Brush** button in the Sharpener Pro 3.0 filter interface, whether you launched that filter from the Selective Tool or from Photoshop or Photoshop Elements' Filters menu, the Selective Tool appears. The filter will be applied to a copy of the image on a separate layer, the new layer will be named after the filter you are using, and you can selectively apply the filter's effect using the **Paint**, **Erase**, **Fill**, and **Clear** buttons described later in this chapter.

The Selective Tool contains four tools for applying the selected Sharpener Pro 3.0 filter.

### Paint

Click the **Paint** button to selectively paint the current filter's effect into the active image. Ensure that your Paint Brush mode is set to Normal and that Opacity is set to 100%. You can control the degree to which the effect is added to the image by varying the opacity of the brush.

### Erase

Click the **Erase** button to selectively remove the current filter's effect from the active image. Ensure that your Paint Brush mode is set to Normal and that Opacity is set to 100%. You can control the degree to which the effect is removed from the image by varying the opacity of the brush.

## Fill

Click the **Fill** button to apply the filter's effect to the entire image. This tool is especially useful if you want to apply the filter's effect to all but a small area. Click **Fill**, then click **Erase** to remove the effect from the area to remain unaffected.

## Clear

Click the **Clear** button to remove the filter's effect from the entire image. This is helpful if you made a mistake with the Paint tool and want to start over.

## Apply / Discard

Click **Apply** to apply the current filter's effect to the image. Click **Discard** to prevent the effect from being applied.



© Kevin La Rue

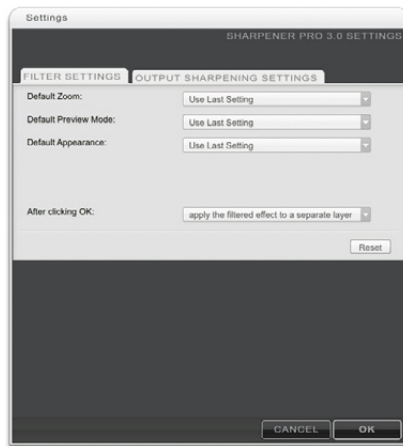
## Chapter 11

# Filter Interface Settings

Controlling the Default Behavior of the Filter Interface

## Filter Interface Settings

Click on **Settings** in the Sharpener Pro 3.0 Filter Interface to configure default look and functionality, and to specify how Sharpener Pro 3.0 affects images. You are presented with two tabs, Filter Settings, and Output Sharpener Settings.



The following settings are available within the Filter Settings tab which will affect both the RAW Presharpener as well as the Output Sharpener:

### Default Zoom

**Default Zoom** lets you specify the zoom state to be applied when the interface is launched. *(Please see [Zoom Tool](#).)*

#### 100%

Opens images at 100% zoom.

#### Zoom to Fit

Ensures that the entire image is visible within the filter interface.

### Use Last Setting

Opens images in the last zoom state used in the previous Sharpener Pro 3.0 session.

### Default Preview

**Default Preview** lets you specify how images are displayed upon opening Sharpener Pro 3.0. *(Please see [Preview Modes in Chapter 7](#).)*

#### Single Image View

Sets Single Image View as default.

#### Split View

Sets Split view as default.

#### Side-by-side View

Sets Side-by-side view as default.

### Use Last Setting

Opens images in the last preview state used in the previous Sharpener Pro 3.0 session.

### Default Appearance

**Default Appearance** sets the brightness of the area surrounding the image in the Preview.

- Light Gray
- Medium Gray
- Dark Gray

### After Clicking OK (Adobe Photoshop Only)

This option lets you specify how Sharpener Pro 3.0 filters are applied.

**Note:** *This option is valid only with Adobe Photoshop and Adobe Photoshop Elements serving as host for Sharpener Pro 3.0.*

### Apply the Filtered Effect to the Current Layer

This option applies the effect to the layer that was active when Sharpener Pro 3.0 was launched.

### Apply the Filtered Effect to a Separate Layer

Choose this option to always apply the filter effects of Sharpener Pro 3.0 to a separate layer. Use this option and save the final image in a layered format to ensure the preservation of original image details.

**Note:** *Enabling this option increases file size and may increase processing time.*

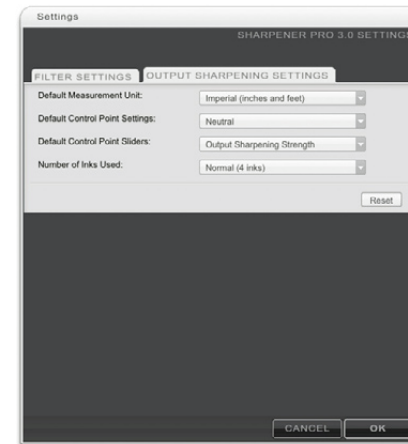
**Note:** *When batch processing with Sharpener Pro 3.0, the filter effect is not applied to a separate layer. To apply Sharpener Pro 3.0 to a separate layer while recording the action, duplicate the layer prior to applying Sharpener Pro 3.0. This ensures that the batch process includes a new filtered layer for each image.*

### Reset

Click **Reset** to restore Sharpener Pro 3.0 filter settings to their default values.

The following settings are available within the Output Sharpener Settings tab:

### Default Control Point Settings



**Default Control Point Settings** will determine if new control points added to the image have neutral settings or use the settings created with the global Creative Sharpening settings.

### Neutral Control Point

New control points will have neutral default settings when first added to an image.

### Retain Creative Sharpening settings

New control points will use the Creative Sharpening slider values for defaults when first added to an image.

## Default Control Point Sliders

**Default Control Point Sliders** will determine what sliders are presented by default on control points in the Output Sharpening filter.

### Output Sharpening Strength

The Output Sharpen Strength option will display only the Output Sharpening Strength slider.

### All

The All option will display all available sliders on a control point in the filter.

### Use Last Setting

New control points will use the slider set from the last control point added to the image.

## Default Measurement Unit

**Default Measurement Unit** sets the default units of measurement.

- Imperial (Inches & Feet)
- Metric (Centimeters & Meters)

## Number of Inks Used

This option will set the number of inks in an inkjet printer and sharpen based on that information.

- Normal (4 inks)
- Photo (6 inks or more)
- Quadtone (grayscale inks)

## Image Size Sliders

The **Image Size Sliders** option controls whether the **Image Height** and **Image Width** sliders are displayed within the Output Sharpening section. By default, these sliders are not displayed, however they can be enabled to support workflows in which resizing an image prior to sharpening is not possible.

### Do not display

The Image Height and Image Width sliders will not be displayed within the Output Sharpening section. This option is recommended as images should be resized prior to sharpening.

### Display

The Image Height and Image Width sliders will be displayed within the Output Sharpening section. This option is recommended only in situations in which the image cannot be resized prior to sharpening.

**Note:** *Changing the image size with the Image Height and Image Width sliders does not change the actual image size. These options adjust the sharpening result to appropriately sharpen images that will be resized by a later process.*

### Reset

Click **Reset** to restore Sharpener Pro 3.0 filter settings to their default values.





© 2008 Tony Sweet

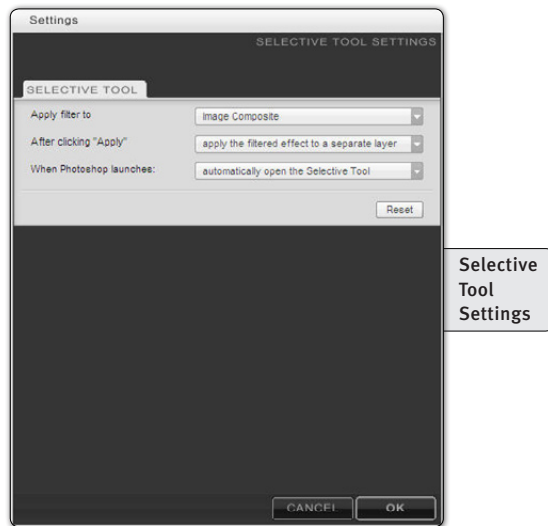
## Chapter 12

# Selective Tool Settings

Controlling the Default Behavior of the Selective Tool

## Selective Tool Settings (Adobe Photoshop Only)

Click the **Settings** button at the bottom of the Selective Tool interface to specify how the Selective Tool interacts with Adobe Photoshop or Adobe Photoshop Elements and active images.



### When Photoshop Launches

This option lets you specify whether the Selective Tool opens when Adobe Photoshop or Adobe Photoshop elements is launched. Choose between:

- Automatically Open the Selective Tool
- Do Not Open the Selective Tool

### Apply filter to:

Advanced users can specify how the Selective Tool applies filters in Sharpener Pro 3.0.

### Image Composite

Select this option to create a new layer and perform a stamp-visible command into the new layer to ensure that the filter is applied to the entire image and not only to the active layer. (This is the default behavior in Sharpener Pro 3.0. This is also how the Selective Tool operates in all other Nik Software products.)

### Active Layer

Select this option to duplicate the layer active when you selected the Sharpener Pro 3.0 filter, and apply the filter to that layer only.

### After clicking Apply

This option lets you specify whether the Selective Tool maintains Sharpener Pro 3.0 filter effects as a separate layer or merges layers when you click **Apply**.

### Merge the Filtered Effect to the Current Layer

This option merges the filtered image with your original image into one layer. Enabling this option helps keep file sizes to a minimum.

### Apply the Filtered Effect to a Separate Layer

The **Keep as Layer** option ensures that the filtered effect is limited to a separate layer. By enabling this setting and saving the active image in a layered file, you preserve original image information and can remove the filter's effect at any time. Please keep in mind, however, that enabling this option may increase file sizes.



© Corey Hilz

## Chapter 13

# Contact and Support

Getting Additional Support

## United States

Contact Nik Software, Inc. by phone at **(619) 725-3150**

Monday - Friday from 8:30 AM - 5:00 PM (PST) or via email at [service@niksoftware.com](mailto:service@niksoftware.com)

Nik Software, Inc.  
7588 Metropolitan Drive  
San Diego, CA 92108, USA  
Phone (619) 725-3150  
Fax (619) 725-3151  
[infous@niksoftware.com](mailto:infous@niksoftware.com)

**[www.niksoftware.com](http://www.niksoftware.com)**

## Germany

In Europe, contact Nik Software, GmbH at **+49-40-47-11-35-0**

Monday - Friday from 9:00 AM - 5:00 PM (CET) or via email at [serviceeu@niksoftware.com](mailto:serviceeu@niksoftware.com).

Nik Software, GmbH  
Hammerbrookstraße 93  
D-20097 Hamburg, Germany

Phone +49-40-47-11-35-0  
Fax +49-40-47-11-35-35

[infoeu@niksoftware.com](mailto:infoeu@niksoftware.com)

**[www.niksoftware.com](http://www.niksoftware.com)**

For more information on Nik Software products go to

[www.niksoftware.com](http://www.niksoftware.com) or [www.upoint.com](http://www.upoint.com).

© 2008 Nik Software, Inc.

Protected by one or more US Pats. 6,728,421; 6,865,300; 7,031,547; and other patents pending.

Nik, U Point, and Dfine are registered trademarks of Nik Software, Inc. Viveza, Color Efex Pro, Silver Efex Pro, and Sharpener Pro are trademarks of Nik Software, Inc. All other trade names mentioned in this manual are trademarks or registered trademarks of their respective holders.