

# Room to Grow

YMCA of Greater New York  
ANNUAL REPORT 2004

Teen Agenda

Operation  
Healthy Kids

Virtual Y



The YMCA of Greater New York  
is a community service organization  
which promotes positive values  
through programs that build spirit,  
mind and body, welcoming all  
people, with a focus on youth.

# Dear Friends,

Thank you for supporting our mission to serve New York City's children, families, and communities. From its founding in the mid-19th century as an organization providing sanctuary for young men moving to New York City from rural areas, to our current role supporting children and families throughout the five boroughs, the YMCA has endeavored to create programs that are timely and relevant. To ensure that we continue to develop the best services-and to offer them in the communities where they are needed most-we have outlined the following three-part vision for the YMCA of Greater New York:

- **To strengthen our position as the leading youth organization in New York City by expanding existing core programs and exploring new initiatives;**
- **To reinforce the YMCA's presence throughout the five boroughs by investing in new facilities in underserved neighborhoods; and**
- **To enhance our reputation as a leader in attracting New York City's strongest and most dedicated volunteers and staff.**

As the largest YMCA in the United States, serving 175,000 young people each year, we are proud of our achievement in reaching youth through quality programming and services, and are committed to building on that success. It is literacy-based programs like the *Virtual Y*, teen leadership programs like the new *Teens Take the City* program, and health and wellness initiatives like *Operation Healthy Kids* that demonstrate our unique ability to prepare youngsters to make successful and healthy life choices.

Our goal of expanding the YMCA's outreach throughout New York City received a tremendous boost with the completion of the five-year \$50 million *Capital Campaign for Kids* under the leadership of Paula Gavin, former President and CEO, and Stephen B. Siegel, Campaign Chair. This initiative included all 19 YMCA Branches and has enabled us to open the new McBurney YMCA in Manhattan, construct major additions to expand the Bronx and Long Island City YMCAs, and to begin construction of the new Dodge YMCA in downtown Brooklyn, the Chinatown YMCA on the Lower East Side, and the expanded Bedford-Stuyvesant YMCA. Special thanks to our capital campaign donors for the generous support received for our ambitious capital redevelopment program.

Among the YMCA's founding principles are volunteerism and community service. We are committed to recruiting volunteers and staff who seek effective and engaging opportunities to serve their communities, and contributors who wish to support an organization with an impressive history of service to New York City's youth.

**Barry Salzberg, Chairman of the Board**  
**Jack Lund, President and CEO**

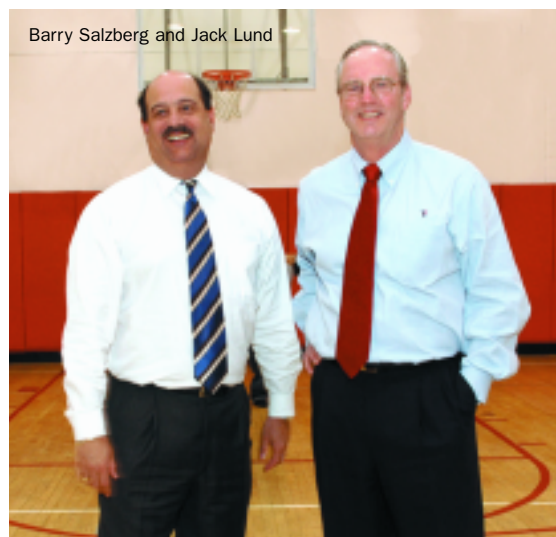


Photo: Elsa Ruiz





Photo: Joe Schulyer Photography

## Carlos Restrepo, Long Island City YMCA

“I was about to drop out of school before I joined the Y. But the Y took my problem and transformed it into a solution. The Y doesn’t just give you the motivation; it brings it out of you and makes you care. School gives certain information, but the YMCA taught me what life is about—that we all have a responsibility—and it gave me a sense of community.”

# Youth Programs

Strengthening our position  
as the leading youth organization  
in New York City

## CREATING AN ASSET-RICH ENVIRONMENT

Is there a secret ingredient to ensuring that a child will grow up to be a healthy, caring, and responsible adult? Based on research and more than 150 years of experience, the YMCA has found that the more resources a young person has—support, values, boundaries and expectations, and activities that provide a constructive use of time—the lower the chances of risky behavior, and the greater the chances for success. Creating a rich environment that introduces as many supportive opportunities into a young person's life as possible is the goal of every youth program offered by the YMCA of Greater New York.

## TEEN LEADERSHIP PROGRAMS

Our YMCA teens say they feel empowered by the responsibility the Y gives them to take charge and organize community service activities and special events. Teens identify strengths they never knew they had, and exhibit self-confidence they never thought they could attain.

Leadership training begins at weekly meetings in the **Leaders Clubs**, offered at every branch, where

activities are designed to enhance emotional growth and teach the importance of social responsibility and service to others. Two to three teens from Leaders Clubs represent their branches twice a month on the citywide **Teen Council**. The Teen Council's 40 members advise the YMCA of Greater New York President, serve as ambassadors for YMCA events and meetings, and plan annual events such as the **Teen Talk About Conference**, a day-long event featuring workshops and issues relevant to the teens. **Youth & Government** attracts 100 young people from Y branches throughout New York City who draft laws that address the needs of their communities and present them annually at the statewide, two-day Model Legislative Weekend at the State Capitol in Albany. In 2005, a citywide program modeled after the State Youth & Government program, **Teens Take the City**, will be launched to give participants a similar experience in City government.

.....  
*<< Carlos Restrepo, a 17-year-old senior at City-As-School in Manhattan, is president of the Leaders Club at Long Island City YMCA, and a member of Youth & Government, Teen Council, Teen Dodge Dinner Committee, Verizon Tech Team pilot program, and Impact Plus technology program. He is considering a career as a police officer or in politics because his experience with the YMCA has inspired him to work in a field where he can directly help his community.*  
.....



Kids in the P.S. 4 Harlem YMCA's Virtual Y program work at strategy

Photo: Jerry Speier

# Youth Programs



## HIGH SCHOOL FOR LEADERSHIP AND PUBLIC SERVICE

At **The High School for Leadership and Public Service** in Lower Manhattan, the YMCA has designed and implemented a comprehensive program to provide students with encouragement, motivation, and support. YMCA staff members work with teachers to run youth development advisory classes twice a week during the school day and also oversee all after-school programming at the school. This program began shortly after 9/11 when UBS Wealth Management USA, which contributes funding to the school, asked the YMCA to provide services to students who witnessed the attacks on the nearby World Trade Center.

## VIRTUAL Y

Today, a child doesn't have to visit a Y branch to be a Y kid. The YMCA's **Virtual Y** after-school program brings this YMCA curriculum to 6,000 girls and boys at more than 80 public schools throughout the five boroughs. Funded with private donations and government grants, and in partnership with the New York City Department of Education, this free, literacy-based program is designed to offer academic support, social and emotional growth, and recreational activities in a structured and supervised environment where children learn the YMCA's core values of respect, responsibility, honesty, and caring.

## OPERATION HEALTHY KIDS

Shooting hoops, jumping into a swimming pool, learning about nutrition, and having fun—that's what kids from middle schools near the Harlem and Jamaica YMCAs look forward to when they come to these branches for the **Operation Healthy Kids** program. It may seem like they are just playing, but they are also learning valuable lessons about how to improve their eating and exercise habits to maintain healthier lifestyles. The program was created to combat childhood obesity and other health problems associated with poor nutrition and physical inactivity. Operation Healthy Kids is part of the YMCA's health and wellness initiative, and it is another example of the type of program the YMCA is developing in partnership with other community organizations to address the needs of underserved communities.



*>> Kelly is a 15-year-old sophomore at the New York City Lab School in Manhattan. In addition to serving as co-president of the Leaders Club at the Chinatown YMCA, Kelly is a member of the Teen Council, Youth and Government, the Chinatown Branch's Youth Board, and serves as a staff writer for the Branch's newsletter, Prospects. Kelly, who comes from an immigrant family, has found that her interaction with advisors from the Chinatown Y who understand and relate to her situation has been particularly helpful to her.*



Photo: Jerry Speier

## TAYLOR YOUNG, BEDFORD STUYVESANT YMCA

“I love coming to the YMCA for the after-school program. I get to meet my friends, play, and swim. The teachers here are great and they make sure that we all have fun and learn too.”



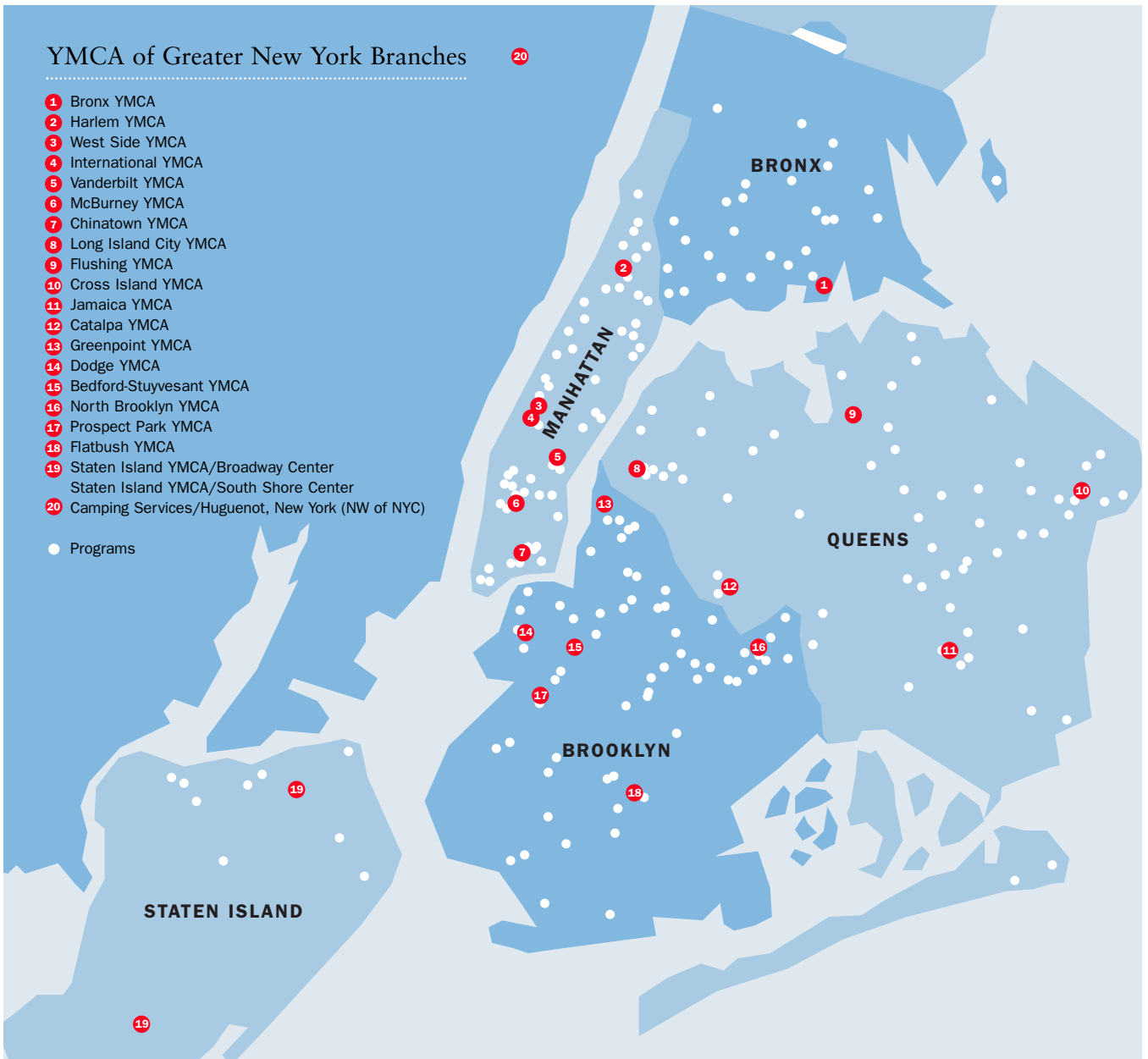


Kelly Lin at the Youth & Government Conference in Albany

Photo: Joe Schulyer Photography

## Kelly Lin, Chinatown YMCA

“I’ve grown so much through the programs at the YMCA. When I first joined the Leaders Club, I was extremely shy and sometimes even frightened by the presence of others who seemed so much more mature than me. Just the thought of leading the Leaders Club was completely beyond my imagination. Now, years later, I’m the co-president of the Leaders Club.”



Barry Salzberg, *Chairman of the Board*  
YMCA of Greater New York

“It’s great to see families spending quality time together, taking advantage of the many programs and activities that the YMCA offers. Today, one of our priorities is to get the word out to all kids across New York City that the YMCA provides children with a wonderful and memorable experience that lasts a lifetime.”



# Our Communities

Expanding the YMCA's presence in  
New York City neighborhoods

## WHERE THE ACTION IS

YMCA Branches are more than just buildings; they are the center of life for the communities in which they are based and are a reflection of the diverse cultures of their members. As communities change, the YMCA responds by changing with them. To continue meeting the needs of New Yorkers, the YMCA has renovated or expanded each of its 19 Branches. The next step is to open new facilities in even more communities. A comprehensive review and planning process is now underway to explore the feasibility of building additional branches in communities in the Bronx, Brooklyn, and Queens.

## A PERMANENT HOME FOR OUR DOWNTOWN BROOKLYN BRANCH

The new Dodge YMCA, formerly known as the Brooklyn Central YMCA, and re-named in recognition of the critical longtime support of the Cleveland H. Dodge Foundation, is now under construction and will become a permanent home for the YMCA's programs in downtown Brooklyn. The first YMCA to be built in Brooklyn in more than 75 years, the Dodge YMCA is located on two floors of a newly constructed residential and commercial building at 225 Atlantic Avenue. When completed in 2005, the Branch will have the capacity to serve 5,000 children and teens and will include classrooms, a computer center, health and wellness center, gymnasium, and a swimming pool.

## YMCA EXPANDS IN BEDFORD STUYVESANT

When it opens in 2005, the reconfigured and expanded Bedford-Stuyvesant YMCA at 1121 Bedford Avenue will feature a renovated activity center, an expanded outdoor recreational space, five community/multipurpose rooms, a family computer center, and a new health and wellness center. The updated facility will be able to serve 13,000 children and teens annually.

## ALL PROGRAMS UNDER ONE ROOF IN CHINATOWN


Child care services, youth development and leadership programs, and family support services currently offered by the Chinatown YMCA at four locations throughout Chinatown and the Lower East Side, will soon be consolidated in one building when the newly constructed Chinatown YMCA opens in 2006 at 273 Bowery. The facility will feature a swimming pool, gymnasium, health and wellness center, community computer center, classrooms, and multipurpose rooms, and will serve 6,000 youth annually.



Photo: Jerry Speier

Richard and Angelina Hogan, Cross Island YMCA  
“Angelina received a lot of special attention from her teachers, and that made a big difference to her. The teachers at the Y seem to have a special feel for what each child needs individually, and they always go the extra mile. It’s clear that they love their jobs, and they are the best at what they do.”

# Our Team

.....  .....

Attracting New York City's best  
nonprofit staff and most dedicated  
volunteer leaders

## A PASSION TO SERVE

What makes the YMCA unique among nonprofit organizations? It is the dedication of our staff of human services professionals, the enthusiasm of our Board and other volunteer leaders, and the passion of our donors.

## OUR STAFF

Ask the Y's counselors, teachers, advisors, and other staff members, and they'll say they get their motivation and inspiration from the people they serve. From seeing the smile on a child's face after achieving a personal success to watching children grow up as Y kids, and gaining confidence along the way, inspiration can be found everywhere! Different ages, personalities, interests, and abilities converge at the YMCA branches each day, and every member has access to the services of professionally trained YMCA staff.

## BOARD VOLUNTEERS

The enthusiastic and devoted members of the YMCA's volunteer boards find that board service is an effective and efficient way to contribute to the well-being of their communities. By seeing firsthand

.....

*<< Richard Hogan's 4-year-old daughter, Angelina, began attending the Cross Island YMCA's Early Childhood Center when she was 1 year old. Developmentally delayed when she first arrived, the Y staff nurtured Angelina and encouraged her work with the occupational and speech therapists who visited her at the Center. Today Angelina is on target developmentally and spends every weekday at the Y where she participates in Universal Pre-K and other Early Childhood programs and swims three days a week.*

.....

Cross Island YMCA kids enjoy a fun time with their camp counselor



Photo: Courtesy of Cross Island YMCA

the dynamic programs that the YMCA creates in response to the specific needs of children throughout New York City, board members have the satisfaction of knowing that their time and resources are helping the young people who need it most.

## DONORS

As a nonprofit organization, the YMCA of Greater New York depends on generous contributions from corporations, foundations, and individuals to carry out its programs. When choosing to make a gift to the YMCA, donors know that they will have a positive impact, especially on the 175,000 children who benefit from the YMCA's programs each year. YMCA supporters share our commitment to community service and the future of New York City's children.

# Annual Support

Sharing a belief in, and a commitment to,  
community service and the future  
of New York City's children

## ANNUAL SUPPORT

### Legacy Circle

**Gifts of \$2,000,000 or more**

The After-School Corporation

### Chairman's Circle

**Gifts of \$500,000 or more**

Philip Morris USA Youth Smoking  
Prevention Program  
UBS

### Anniversary Circle

**Gifts of \$150,000 or more**

Estate of Wellington Bull  
Citigroup and Citigroup Foundation  
J.P. Morgan Chase and  
The J.P. Morgan Chase Foundation  
The Starr Foundation

### President's Circle

**Gifts of \$25,000 or more**

Ambrose Monell Foundation  
Annunziata Family Foundation  
AT&T Foundation  
Avon Products, Inc.  
Janie Elizabeth Bailey  
Bloomberg  
Douglas and Samara Braunstein  
Bristol-Myers Squibb Company  
and Foundation  
Burke Supply Co., Inc.  
Cisco Systems, Inc.  
Cleveland H. Dodge Foundation, Inc.  
The Coca-Cola Bottling Company  
Colgate-Palmolive Company  
John P. Costas  
Cravath, Swaine & Moore LLP  
The Frances L. & Edwin L. Cummings  
Memorial Fund

Merrill Lynch & Co., Inc. and Merrill

Lynch & Co., Foundation, Inc.  
Estate of G. Gloria Miraglia  
New York Community Trust  
New York Life Insurance Company and  
New York Life Foundation  
Phyllis Poland  
Polo Ralph Lauren  
PricewaterhouseCoopers LLP  
The Rockefeller Foundation  
Julianne and Clayton Rose  
SCOPE-ACA  
Simpson Thacher & Bartlett  
St. Nicholas Neighborhood  
Preservation Corp.  
The Tiger Foundation  
Time, Inc.  
Time Warner  
Verizon  
Wilmerding Family

Gibson, Dunn & Crutcher LLP

Deane Gilliam  
David J. Greene Foundation  
Greenpoint Savings Bank and Foundation  
The Marc Haas Foundation  
HBO  
HSBC USA, Inc.  
IBM Corporation  
KeySpan Energy  
Kimberly Clark Foundation  
Robert Kindler  
KPMG LLP  
Kum Gang, Inc.  
Latham & Watkins  
Lexmark International, Inc.  
MasterCard International  
Merck & Company, Inc.  
Microsoft Corporation  
Morgan Stanley Foundation  
Newsday Charities  
Jessie Smith Noyes Foundation  
Padula Foundation  
Pier Sixty LLC  
Pillsbury Winthrop LLP  
The Poland Foundation, Inc.  
Port Authority of New York  
and New Jersey  
The Pumpkin Foundation  
Reuters America, Inc.  
Julie and Matt Richardson  
Richmond County Savings Foundation  
Rosenberg & Estis P.C.  
Barry and Evelyn Salzberg  
Dennis and Dorothy Sheahan  
Signature Construction Group, Inc.  
Jeffrey M. Sinaw  
Siwel Consulting, Inc.  
Skadden Arps Slate Meagher & Flom  
Thelen Reid & Priest LLP  
Hon. Merryl and James Tisch  
Veritas Software  
Karl M. and Mary Ellen von der Heyden  
Vornado Realty Trust  
Wachtell Lipton Rosen & Katz  
YMCA Retirement Fund  
Raymond Yu

Jack Lund, *President and CEO*  
YMCA of Greater New York

“YMCA supporters continue to believe in our mission as a community service organization that provides much-needed resources for children and their families. These strong relationships help us remain focused on what is important—offering the YMCA experience to a child who may not have had the chance before.”

### Metropolitan Circle

**Gifts of \$75,000 or more**

Anonymous  
The Bank of New York  
The Clark Foundation  
Irene D. Collija Trust  
Con Edison  
Credit Suisse First Boston  
and Foundation  
Deloitte & Touche LLP  
Deutsche Bank Americas  
and Foundation  
Madison Square Garden, L.P.  
New York Stock Exchange Foundation  
Pfizer Inc. and Pfizer Foundation  
Robert H. and Rhonda Silver  
SI Bank & Trust Foundation  
United Way of New York City  
Vasey Foundation

Diane and Robert F. Cummings, Jr.

Davis Polk & Wardwell  
Disney Worldwide Services, Inc.  
Hon. Daniel and Alisa L. Doctoroff  
EDS  
The Jane and Stephen Frank Foundation  
Charlotte & Joseph Gardner Foundation  
GE Foundation  
Goldman Sachs & Co.  
Grano Family Foundation  
Hagedorn Fund  
HealthPlus PHSP, Inc.  
Heidrick & Struggles, Inc.  
HIP Health Plans, Inc.  
Independence Community Bank  
and Foundation  
Benjamin R. Jacobson  
Jewish Institute of Queens  
KFC  
Marsh, Inc.

YMCA of the USA

Paula Zahn and Richard D. Cohen

### Gold Triangle

**Gifts of \$10,000 or more**

AXA Advisors and AXA Foundation  
The Baird Family Fund  
The BISYS Group, Inc.  
The Bodman Foundation  
The Capital Group Companies, Inc.  
CB Richard Ellis, Inc.  
Lin & Susie Chen Foundation, Inc.  
Janice Reals Ellig and Bruce Ellig  
ESPN, Inc.  
ExcelaCom  
Fleet Bank  
Fred Alger & Company, Inc.  
Gap, Inc.  
Paula and John Gavin  
General Electric

### Red Triangle

**Gifts of \$5,000 or more**

Alexandra Investment Management  
Ambac Assurance Corporation  
American Airlines, Inc.  
American Express Company  
APartnership  
Henry C. Barkhorn, III  
Jonathan R. Baum  
The Bay Foundation  
David Bilheimer  
Willard W. Brittain  
Brunswick Group, Inc.  
Brian Byrd  
Richard Cashin  
Choi & Burns, LLC  
Chubb & Son, Inc.  
Constance Cincotta  
Commerce Bank  
Cortel Business Solutions  
Patricia E. Costa  
Deloitte & Touche 2004 Community  
Impact Award, in the name of  
John Price Patterson Jr.



Donald Blair Architects  
Richard Donatuti  
Dorothy Doughty  
Gerald Eisenhaur  
Patti and James R. Elliott, III  
EMC Corporation  
Ferolito, Vultaggio & Sons  
Richard Ferrara  
James and Nancy Fitzpatrick  
Timothy P. Flynn  
Ken Fong  
Stephanie and Eric O. Fornell  
Fountain House  
Frances Alexander Foundation  
Carson Gleberman  
Gwenda and John Hanson Fund  
Frederick J. Hammond, Jr.  
David Hargraves  
The Heckscher Foundation for Children  
Hess Foundation, Inc.  
Carl H. Hewitt  
Hitachi Data Systems  
Inverclyde Bequest Fund  
The J.M. Kaplan Fund, Inc.  
Elias Karmon  
KFM Associates, Inc.  
Robert Kindler  
Nell Kleinschmidt  
Rosario Koepf  
Ron Krell  
The Kupferberg Foundation  
Christine LaSala and Ellen Lipschitz  
Gordon Lau  
Glenn Lau-Ke  
Leon Lowenstein Foundation, Inc.  
Litwin Foundation, Inc.  
Jack Lund  
Sally and Alexander P. Lynch  
S. Todd MacIin  
Michael J. Malter  
Mary W. Harriman Foundation  
Randy M. Mastro  
The McGraw-Hill Companies  
Metropolitan Life Insurance Company  
Doris S. Michaels  
David Moore  
Mount Sinai Hospital  
The Munch Bilheimer Foundation  
Network Appliance, Inc.  
New Line Cinema  
New York Construction Corporation  
New York Football Giants, Inc.  
The New York Hospital  
New York Jets LLC  
New York Power Authority  
NHL Foundation  
North General Hospital  
Robert W. Norton  
Orion & Global Chartering Co., Inc.  
Charles Osgood  
Sang H. Pak  
Pamela Patton  
Polish & Slavic Federal Credit Union  
PTA - Robert Fulton School  
Laurance S. Rockefeller\*  
Ronald McDonald House Charities  
Ellen Rose  
Thomas M. Ryan  
Sasco Foundation  
Adolph & Ruth Schnurmacher Foundation  
Shearman & Sterling  
Yehudit Sidikman  
Ernest G. Thifault  
J.J. Thomas  
Toyota Motor Corporate Services  
Mary Turney  
U.S. Trust Company  
Unisys Corporation  
Varnum-DeRose Charitable Trust  
Hon. Myrtle G. Whitmore  
Clayton Young

\*deceased

**Youth Benefactor**

**Gifts of \$2,500 or more**

Anonymous  
A & F Commercial Builders  
AA Truck Renting Corporation  
ACE American Insurance Company  
Lynn Alexander Morris  
Amivest Capital Management  
Anheuser-Busch Companies  
Elaine Arace  
BBDO  
Mike Beck

Frances and Benjamin Benenson  
Candis Best  
Buchbinder & Warren LLC  
James E. & Diane W. Burke Foundation  
Kevin and Patricia E. Burke  
C.L.B. Check Cashing, Inc.  
Caesar & Napoli  
Maria Camporeale  
Zachary Carter  
Classic Vending, Inc.  
The Clinton Group  
Columbia University  
The Community Preservation Corporation  
Constans Culver Foundation  
Edna Cowen, III  
Mr. and Mrs. Gerald Cromack, II  
CUNY  
Daily News  
Data Industries, Ltd.  
Digitas  
Buzz and Liz Ann Doherty  
Donald Blair Architects  
Gail Duke  
Entergy  
Wynetta B. Erwin  
Peter Falcone  
Carl Fields, Jr.  
First American International Bank  
First American Title Insurance  
Mabel Burchard Fischer  
Grant Foundation  
Ford Foundation Matching Gift  
Fried, Frank, Harris, Shriver & Jacobson  
Lily Palmer Fry Memorial Fund  
Fund for Public Schools, Inc.  
The Fuscone Family Foundation  
Gant U.S.A. Corporation  
Gordon & Silber P.C.  
Patricia M. Grayson  
Matthew and Tita Greene  
Greenberg Traurig Attorneys  
Bernell K. Grier  
Hamilton Madison House, Inc.  
Beatrice L. Harmon  
HCR Manor Care  
The Carl and Marsha Hewitt Foundation  
Holiday Inn Downtown  
Albert Hsu  
Dr. Chul S. Hyun  
Infinite Computer Solutions, Inc  
Barbara Ingraham  
Timothy Ingrassia  
Interstate Brands, Inc.  
Jewish Communal Fund  
JFK International Air Terminal LLC  
Jostens  
The Joyful Church of New York  
Eileen Judell  
Kass Industrial Supply Corp.  
George A. Kellner  
Stephen G. Kenny  
Charles A. King  
Michael J. Klingensmith  
Allan F. Kramer, II  
Kranky Productions, Inc.  
Douglas Larson  
Daniel Leff  
Regina Lieberman  
Kathleen Linburn  
Tom Loftus  
Shao An Luo  
Macy's East  
Susan P. Magee  
Timothy Main  
Major Automotive Group  
Marine Engineers Beneficial  
Cynthia D. Marler  
Michael Marocco  
Jane Marshall  
Marie Mattie  
Annette McEvoy-Bronheim  
Medgar Evers College  
Sandra Milad  
Rama Mukhopadhyay  
Thomas Murn  
Kennedy A. Mykoo  
James Napoli  
Daniel A. Neff, Esq.  
Newmark New Spectrum Retail  
John P. Nolan  
North Fork Bank  
NRG Energy-Astoria Gas Turbines  
Office Depot  
Alfred T. Ogden  
Hon. Eugene Oliver, Jr.  
Annette B. Osnos

Hervé Pauze  
Personal & Child Safety, LLC  
Eric Petersen  
Philip General Construction, Inc.  
Pitney Bowes  
Marguerite B. Platt  
Kurt Pohmer  
Timothy L. Porter  
Prescott Fund for Children  
Queensborough Rotary Club  
Rampulla Associates Architects  
John Rappaport  
John P. Rennie  
Riviab  
Rock Resorts  
Rover Family Philanthropic Fund  
Schieffelin & Somerset  
Skanska USA Building, Inc.  
Harold C. Smith  
Kimberly S. Soule  
John Spensieri  
Star Trac  
State Bank of Long Island  
Steinway & Sons  
Zachary Stern  
Stursberg & Veith  
José S. Suquet

All Promotions, Inc.  
Alexandra Allen  
Alley Pond Striders  
AllianceBernstein  
Ambrosino DePinto & Schmieder  
American Maritime Officers  
Jacques Andre De Graff  
Edward D. Andrews  
Roseanne Antonucci  
Apple Bank for Savings  
Arthur F. Armstrong  
Gerry Arrighi  
Mr. and Mrs. Theodore H. Ashford  
Atlantic Philanthropies  
AvalonBay Communities  
Michael Bagnell  
Anthony C. Baker  
William Ballaine  
Banbury Fund, Inc.  
Anthony B. Barone  
Basil Castrovinci Associates, Inc.  
Battery Park City Authority  
J. W. Bedell-Pizzo  
John B. Beinecke  
Georgette F. Bennett  
Sharon Benton  
Beplat Hardware

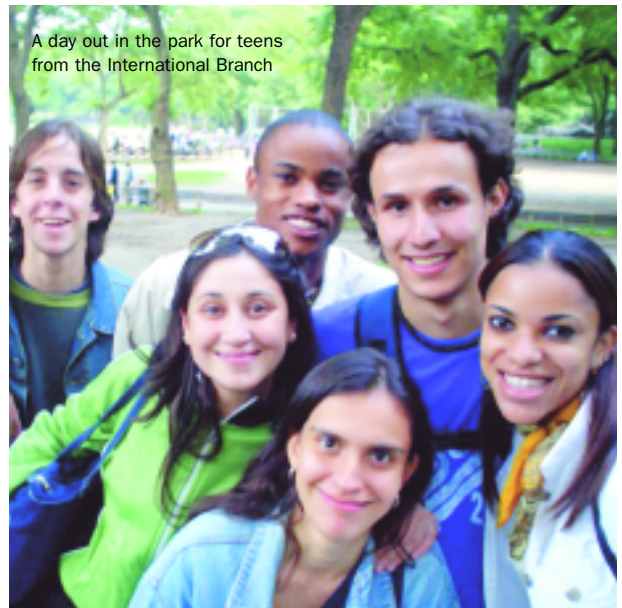


Photo: Courtesy of International YMCA

Gregg Swain  
Arthur and Carol Taylor  
William Thomas  
Tocqueville Asset Management L.P.  
Daniel E. Tomai  
Transfiguration School  
Triboro Coach Corporation  
Turtle Bay Association, Inc.  
Universoul  
Jeremiah R. Van Brunt Fund  
Vanderbilt Moravian Church  
Waste Management Foundation  
WCBS-TV  
Christine Weaver  
Jonathan G. Weiss  
Daniel P. Wiener and Ellen Freudenheim  
Peter Wong  
Claire C. Wood  
YMCA of the State of New York  
Jeannie Yuen

Sandra Berger  
Pablo Berhau  
Paul Berkman  
Daniel Berlan  
Gregory T. Bernhart  
Daniel L. Bernstein  
Yateendra Bhatnagar  
Mr. and Mrs. Jerry Bierbaum  
Richard B. Birrer  
Bluewaters Capital Corporation  
Eleanor Bogert  
Glendon Breedy  
Bronx Community College  
Bronx Times Reporter  
Brooklyn Chinese-American Association, Inc.  
Elizabeth Burns  
C & L Contracting Company  
Barbara Callahan  
Canus Shipping S.A.  
Shelley Carr  
Carroll Gardens Association  
Castle Oil Corporation  
CC Vending, Inc.  
Centralized Lab Services, Inc.  
Spencer P. Chan  
The Chandler Group  
Charles B. Wang Community Health  
Chinese Cheung Sang Funeral Home  
Chinese Conservative Baptist Church  
Chinese-American Planning Council  
Hyun Chung Choi

**Youth Advocate**

**Gifts of \$1,000 or more**

Anonymous  
A. Esteban & Co.  
ACC Construction  
ACE Style Intimate Apparel, Inc.  
Agentopia Corporation  
Robert J. Ahlstrom, Jr.  
Mr. and Mrs. Charles H. Ainsworth  
Airman Memorial Chapel ROF



Shooting hoops after school

Dr. Mingi Choi  
 John and Maria Chrin  
 Christian Cultural Centre  
 David Christmas  
 Kei Wah Chua  
 Tae U. Chung  
 Yong Jin Chung  
 Ciampa Management Corporation  
 Citigroup Business Services  
 Yvonne Clayton  
 Brendan Coburn  
 College of New Rochelle  
 James Columbo  
 Columbo & Eagan, PC  
 Complete Management Services  
 Cook & Krupa, Inc.  
 Miriam Corbin  
 Anthony Corbisiero  
 David Corkery  
 Michael A. Correria  
 James Cosares  
 Courier Life  
 The Cowles Charitable Trust  
 Robert and Deborah Cox  
 Mr. and Mrs. Arthur Crocker  
 Cultural Access Group, Inc.  
 Paul Custer  
 D&C Amoco Service Center, Inc.  
 Daffodil General Contracting  
 Orville W. Dale  
 Carol Davis  
 David Davis  
 Paul Del Balso  
 Sylvie Del Giudice  
 Maria M. del Toro  
 Perla Delson  
 DeSantis, Kiefer, & Shall  
 Jacqueline Marie Didier  
 Dime Savings Bank of Williamsburgh  
 Diversified Inch By Inch, Inc.  
 Dolphin Swimming Corp.  
 Donald W. Spiro Foundation  
 Dorsey & Whitney Foundation  
 Maria Drattell  
 Blair M. Duncan  
 Robert Durkin  
 Fred D. Edmonds  
 Emily Eldridge  
 Emigrant Savings Bank  
 Emily's Boutique  
 Ernest Eng  
 Jane B. Engquist  
 E-Ships  
 Raul P. Esquivel  
 ExxonMobil Foundation  
 Fon-May Fan  
 John Farrell  
 Federation of Protestant  
 Welfare Agencies  
 Dana Feinberg

Nancy Feinglass  
 Miguel Feliciano  
 Terrance M. Fiore  
 Flushing Rotary Club  
 Fordham Toyota  
 Elizabeth Foster  
 George Franke  
 Randy Franza  
 Frontier Group  
 Fund for the City of New York  
 Gerald L. Garavel, Jr.  
 The Garden  
 Garvin Brown Construction Products  
 Olga Geroulanos  
 Daniel Gerstman  
 Good-Will Mechanical Corporation  
 Gould, McCoy, Chadick, Ellig  
 Kirby S. Graham  
 James M. Grant  
 R. Vann Graves  
 Greater Cincinnati Foundation  
 Greenwich Village Medical Group  
 Stephen K. Grimm  
 Martin Grossman  
 Simone Grossman  
 Ralph Guild  
 Henry Gutman  
 Christy Guzzetta  
 Paul Haaga, Jr.  
 Sally Haigh Alex  
 Hampton University  
 Kwang Ho Han  
 Anvernette B. Hanna  
 Serena Harding Jones-Lese  
 Harmon Funeral Home  
 Jason B. Harper  
 Katherine Harris  
 Ruth C. Hauptert  
 Patricia E. Hazlewood, Ed.D  
 Paul B. Healy  
 The Hohmann Foundation  
 Martha Holstein  
 Home of the Alliance, Inc.  
 Peter Hootis  
 Patricia Hubbard  
 Hudson Valley Arts, Inc.  
 Susan Hug  
 Immigrant Social Services  
 International Pursuit of Bronx, Inc.  
 Irvin Simon Photographers, Inc.  
 J. Foster Phillips Funeral Home  
 Jackrabbit  
 Betsy Jacobs  
 JGD Management Corp.  
 Arthur Johnson  
 Donald B. Johnson  
 Victor Joo  
 Jo-Rich Conservation Co., Inc.  
 Max S. Kadin  
 The Kandell Fund

Natalia Kanem  
 Kef Media Associates, Inc.  
 Marie Kelly  
 Kenny & Khan, Inc.  
 The Kess Foundation, Inc.  
 Keystone Shipping Company  
 Charles C. Khym  
 Linda Kiehl  
 Kiky Creations, Inc.  
 Konica Minolta Business Solution  
 Richard Krantz  
 K-Sea Transportation  
 LaGuardia Community College  
 Lahr, Dillon, Manzulli, Kelley & Penett  
 Land America  
 Francesco and Natalia Laudadio  
 Bernadette Lee  
 Daniel H. Lee  
 Fred Lee  
 Harold Lee  
 Hong Shing Lee  
 Kern Ho Lee  
 Lucy Lee  
 Sung H. Lee  
 James B. Lee, Jr.  
 William K. Lee  
 James Lemp  
 Mr. and Mrs. Anthony Leness  
 Jacquelyn K. LeoGrande  
 Leslie A. Lerner  
 Leslie Digital Imaging LLC  
 Martin R. Lewis  
 LG Electronics U.S.A., Inc.  
 Lipper Family Foundation  
 Locus Telecommunications, Inc.  
 Joseph Logudic  
 Ed Loony  
 Mildred Love  
 Mr. and Mrs. Robert MacNeil  
 Alice L. Mairs  
 Mandarin Oriental Hotel  
 Reginald Manning  
 Amy Marano  
 Thomas F. Marano  
 Henry Mark and Catherine Yu  
 Suzanne Goon Mark  
 Madeline J. Marshall  
 Bruno Mastropasqua  
 Mauro Revocable Trust  
 McCarthy Finger LLP  
 Clara M. McDonald  
 James A. McDonald Foundation  
 McDonalds  
 Kathleen McGovern  
 Richard and Ronay Menschel  
 Metzger-Price Fund  
 Milad Contracting Corporation  
 Christian W. Miller  
 Clinton M. Miller  
 Milton V. Brown Foundation  
 Montelione & Associates, P.C.  
 Sook Young Moon  
 Tom Q. Moore  
 Morgik Metal Designs  
 Danielle Moss-Lee  
 Mountain Broadcasting Corp.  
 Kenneth R. Natori  
 Jonathan Nelson  
 Vince Nerlino  
 New York City Partnership Foundation  
 Elliott B. Newcomb  
 Newtux, Inc.  
 Nickerson Corporation  
 Reverend Raymond Nobiletto  
 Northfield Savings Bank  
 NYIT  
 John C. Nystrom  
 Jennifer O'Reilly  
 Stephen G. Oswald  
 Judy Ouziel  
 Oxford Health Plans, Inc.  
 PAFCU  
 Mr. and Mrs. A. Wright Palmer  
 Paramount Pictures  
 Eun Kyung Park  
 Hyung Young Park  
 Ida Parker  
 Patrolmen's Benevolent Association  
 Ethel Patterson  
 Pamela Patton  
 Pepsi Cola Company  
 Erica Phillips  
 The Polish & Slavic Center  
 Polonaise Terrace  
 Daniel Polowetzky  
 Porter Athletic Equipment Company  
 Powers Fasteners  
 Precor USA  
 Brenda Prescott  
 Margaret Preston  
 Joseph J. Previte  
 Pro Visual Advertising  
 Project Hospitality, Inc.  
 Amelia Pronis  
 Providence  
 Prudential Foundation  
 PTA of PS 295  
 Pulaski Service Station, Inc.  
 Paul J. Pullo  
 Pure Solutions Corporation  
 Scott Reeds  
 Delores M. Reid-Barker  
 Residential Management Group  
 Mark Richards  
 Jeong R. Rim  
 Ripco Real Estate IV Corporation  
 Robin Rivera  
 Anthony F. Rizzuto  
 Lorena Robinson-Saeed  
 Phyllis G. Roe  
 Douglas Rorech  
 Helen Rosenthal  
 Mr. and Mrs. Paul C. Ross  
 Kathleen Rudy  
 William D. Rueckert  
 Russo Picciurro Maloy Insurance  
 Russo, Scamerdella & D'Amato P.C.  
 S & J Vending Corp.  
 Salem Missionary Baptist Church  
 Kent W. Sampson  
 Celeste Sant'Angelo  
 Scaran Oil Service Company, Inc.  
 Donald J. Schier  
 Schindler Elevator Corporation  
 David Schoenthal  
 Donna Schragis  
 Ellen Schubert  
 Seafarers International Union  
 Seed LLC  
 Emily Senay  
 Service Directions, Inc.  
 Seth Sprague Educational &  
 Charitable Foundation  
 Shiny Construction, Inc.  
 Shao Yu Situ  
 John Skipper  
 Skylab General Contracting Corporation  
 John Slade  
 Carol Lynn Smith  
 Mr. and Mrs. Charles F. Smithers, Jr.  
 John and Pamela Snowden  
 Jonathan Sobel &  
 Marcia Dunn Foundation  
 M. & H. Sommer Foundation  
 Eric Soto  
 Solon E. Summerfield Foundation  
 Spartan Security Services, Inc.  
 Arthur Square  
 Stark Carpet Corporation  
 Staten Island University Hospital  
 Staubach  
 Heidi Steiger  
 John Steinhart and Susan Margules  
 The Stenner Group  
 Percy Sutton  
 Susan Switzer  
 Sarah Nash Sylvester  
 Carolyn Tabachnik  
 John Tapper  
 Harry Tarzian  
 Hon. Diana L. Taylor  
 Jim Terjesen  
 Terjesen Associates Architects  
 Suzanne Thompson  
 3-Decker Restaurant  
 Tobe Associates, Inc.  
 Renee S. Tobin  
 Dennis J. Tortora  
 Virginia Tranchik  
 Loretta Trapani  
 Trey Whitfield School  
 Mr. and Mrs. Olivier Trouveroy  
 M. Tse  
 Frederic Turbee  
 Turner Construction Company  
 Kenneth B. Turpin  
 Two Trees Management Company  
 Tzu Chi Foundation, USA  
 UEAA  
 United Homes

Universal Construction of D.K.  
 Universal Network Television LLC  
 Simmons Valeris  
 Valiant Foundation  
 John Van Ingen  
 Vanderveer Park United Methodist  
 Nancy Vardakis  
 Linda Vester and Glenn H. Greenberg  
 Gary Villaverde  
 Alexander von Summer  
 Family Foundation  
 Gerri Warren-Merrick  
 Debbie Weick  
 Western Asset  
 White & Case LLP  
 Dereck Whittenburg  
 Wicked Fashions, Inc.  
 Daniel Widawsky  
 Denise R. Durham Williams  
 Paul Williams  
 Stewart D. Williams  
 The Woman's Seaman's Friend  
 Society of Connecticut, Inc.  
 Lisa Woods  
 Chun Yee Yip  
 Chu Young Yoo  
 Bong Y. Yu  
 Soon Hee Yun  
 A. Lee Zeigler  
 Celia Zuckerman

**VIRTUAL Y**

**Chairman's Circle**  
**Gifts of \$500,000 or more**  
 The After-School Corporation  
 UBS

**Anniversary Circle**  
**Gifts of \$150,000 or more**  
 The Starr Foundation

**Metropolitan Circle**  
**Gifts of \$75,000 or more**  
 Anonymous  
 The Clark Foundation  
 CSFB Foundation

Deutsche Bank Americas Foundation  
 JP Morgan Chase Foundation  
 New York Stock Exchange Foundation  
 SI Bank & Trust Foundation

**President's Circle**  
**Gifts of \$25,000 or more**  
 Bloomberg  
 Douglas Braunstein  
 Bristol-Myers Squibb Company  
 and Foundation  
 Burke Supply Co., Inc.  
 Citigroup and Citigroup Foundation  
 Con Edison  
 ContiGroup Foundation  
 John P. Costas  
 Cravath, Swaine & Moore  
 Diane and Robert F. Cummings, Jr.  
 Davis Polk & Wardwell  
 Deloitte & Touche LLP  
 Hon. Daniel and Alisa L. Doctoroff  
 EDS  
 The Jane and Stephen Frank  
 Foundation  
 Charlotte & Joseph Gardner  
 Foundation  
 Goldman Sachs & Co.  
 Grano Family Foundation  
 Heidrick & Struggles, Inc.  
 Independence Community  
 Foundation  
 New York Life Foundation  
 Pfizer Inc.  
 PricewaterhouseCoopers LLP  
 Robert H. and Rhonda Silver  
 Simpson Thacher & Bartlett  
 The Tiger Foundation  
 Wilmerding Family

**Gold Triangle**  
**Gifts of \$10,000 or more**  
 The Baird Family Fund  
 The Bodman Foundation  
 Davis Polk & Wardwell  
 David J. Greene Foundation  
 The Marc Haas Foundation  
 Benjamin R. Jacobson  
 Latham & Watkins  
 Morgan Stanley Foundation

Phyllis Poland  
 Barry and Evelyn Salzberg  
 Skadden Arps Slate Meagher  
 & Flom

**Red Triangle**  
**Gifts of \$5,000 or more**  
 Janie Elizabeth Bailey  
 Brunswick Group, LLC  
 Choi & Burns, LLC  
 Patti and James R. Elliott, III  
 Stephanie and Eric Fornell  
 Robert Kindler  
 Leon Lowenstein Foundation, Inc.  
 Sally and Alexander P. Lynch  
 S. Todd Maclin  
 Michael Malter  
 Charles Osgood  
 Pamela Patton  
 Adolf & Ruth Schnurmacher  
 Foundation  
 Dennis and Dorothy Sheahan  
 Shearman & Sterling

**Youth Benefactor**  
**Gifts of \$2,500 or more**  
 The Bank of New York  
 Beatrice L. Harmon  
 HCR Manor Care  
 John G. Ketter  
 Timothy Main  
 Jonathan G. Weiss  
 Hon. Myrtle G. Whitmore

**Youth Advocate**  
**Gifts of \$1,000 or more**  
 Gregory T. Bernhart  
 The Cowles Charitable Trust  
 Janice Reals Ellig  
 James M. Grant  
 James B. Lee, Jr.  
 Sarah Nash Sylvester  
 John Steinhart and  
 Susan Margules

**Government Sponsors**  
 New York City Council  
 21<sup>st</sup> Century Renaissance  
 After-School Program

**Government Partners**  
 New York City Department of Education  
 New York State Department of Education

**TEEN ACTION NYC**

**Champion's Circle**  
**Gifts of \$300,000 or more**  
 UBS

**President's Circle**  
**Gifts of \$25,000 or more**  
 Credit Suisse First Boston  
 GE Fund  
 New Visions for Public Schools  
 Philip Morris USA Youth Smoking  
 Prevention Program

**Gold Triangle**  
**Gifts of \$10,000 or more**  
 The Poland Foundation

**Red Triangle**  
**Gifts of \$5,000 or more**  
 Deloitte & Touche 2004 Community  
 Impact Award, in the name of  
 John Price Patterson Jr.

**Government Partners**  
 New York State Department of Education

**In-Kind Support**  
 New York City Department of Education

**2004 ANNUAL REPORT PRODUCED BY:**  
 Department of Communications, Media  
 & Public Relations  
 Reginald C. Hamlett,  
 Vice President of Strategic Marketing  
 Dawn S. Walker,  
 Director of Communications  
 Vivian Thomas,  
 Associate Director of Communications

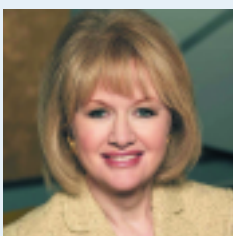
**DESIGN:**  
 Creative Source Inc.

**DIANA L. TAYLOR, JANICE REALS ELLIG, CONSUELO MACK**

“It is hard to think of an organization that is better known than the YMCA of Greater New York and it is even harder to imagine New York City without the Y.

As the city's neighborhoods change with the ebb and flow of immigration, the Y has kept pace with the needs of these communities, their families and children, providing programs and services that enrich the lives of so many New Yorkers—newly arrived and long ensconced.

We are proud to be members of the Association's Board of Directors and of our relationship with such a venerable and relevant organization.”



**FROM TOP TO BOTTOM:**

Hon. Diana L. Taylor, *NYS Banking Department*, Association Board Member  
 Janice Reals Ellig, *Gould • McCoy • Chadick • Ellig*, Association Board Member  
 Consuelo Mack, *CNBC*, Association Board Member

# Capital Campaign for Kids

Renovating and expanding our existing  
facilities and building new branches

In 2000 the YMCA of Greater New York launched a \$50 million **Capital Campaign for Kids** as the centerpiece of a \$150 million facilities redevelopment program. In the summer of 2004, we achieved our \$50 million goal and met a \$2 million Kresge Foundation Challenge, entirely from private sources. In addition, over \$24 million in capital grants was raised from government sources.

The corporate, foundation and individual leadership gifts committed early in the campaign provided a platform for the subsequent successes. In addition to the \$2 million Kresge Foundation challenge grant, donors of campaign gifts at the critical million-dollar level and above include: The Starr Foundation (\$2.5 million); Cleveland H. Dodge Foundation, Inc. (\$2 million); Charles Hayden Foundation (\$1.5 million); UBS (\$1.275 million); The J.P. Morgan Chase Foundation (\$1 million); and an anonymous individ-

ual donor (\$1 million). The generous contributions of these key donors and of all donors to the Capital Campaign for Kids have been gratefully received.

The purpose of the capital campaign has been to expand capacity for youth programs at every YMCA Branch and our Camping Services Branch upstate in order to serve 200,000 New York City youth. The capital renovation program is creating more space for children's and teen programs, summer camps and year-round early-childhood care, updating health and wellness facilities, and enabling the YMCA to provide more educational programming.

The \$150 million master redevelopment plan, for which the campaign has been key, is a legacy-building undertaking that is benefiting communities across the city.

## Donors

### Legacy Circle

**Gifts of \$2,000,000 or more**

Cleveland H. Dodge Foundation, Inc.  
The Kresge Foundation  
The Starr Foundation

### Founder's Circle

**Gifts of \$1,000,000 or more**

Anonymous  
Charles Hayden Foundation  
The J.P. Morgan Chase Foundation  
UBS

### Chairman's Circle

**Gifts of \$500,000 or more**

Annuziata Family Foundation  
Bloomberg  
The Clark Foundation  
Hon. Daniel and Alisa L. Doctoroff  
Merrill Lynch & Co. Foundation, Inc.

MetLife Foundation  
New York Life Foundation  
The Pfizer Foundation

### Champion's Circle

**Gifts of \$300,000 or more**

AXA Foundation  
The Horace W. Goldsmith Foundation  
The Hyde and Watson Foundation  
Christine LaSala and Ellen Lipschitz  
Robert H. and Rhonda Silver and Family

### Anniversary Circle

**Gifts of \$150,000 or more**

Booth Ferris Foundation  
The Louis Calder Foundation  
CB Richard Ellis  
Con Edison  
Robert F. Cummings, Jr.  
Deutsche Bank Americas Foundation

The For All Kids Foundation  
Benjamin R. Jacobson  
New York Stock Exchange Foundation  
News Corporation  
The Related Companies, L.P.  
Mary E. Taylor and Christopher C. Behrens  
Tishman Speyer Properties LLC  
Vasey Foundation  
Vornado Realty Trust

### Metropolitan Circle

**Gifts of \$75,000 or more**

Alan S. Alpert and Linda Trotta  
Ambac Financial Group, Inc.  
Douglas and Samara Braunstein  
Deloitte & Touche LLP  
Fisher Brothers Foundation, Inc.  
Paul and Babeth Fribourg  
Paula and John Gavin  
The Grano Family Foundation

KPMG LLP  
J. Robert and Patricia Lovejoy  
Jack Lund  
Marsh Inc.  
Orda Management  
Pepsi-Cola Company  
Julianne and Clayton Rose  
Barry and Evelyn Salzberg  
Stephen B. Siegel  
Sheldon Solow  
Peter E. Stringham  
James and Merryl Tisch  
Seth H. Waugh

### President's Circle

**Gifts of \$25,000 or more**

Accenture Employees  
Robert J. Alexander  
Atlantic Mutual Companies



The Bank of New York and  
The George Link, Jr. Foundation  
Robert Baraf  
George W. Billicic, Jr.  
Donald Blair  
Richard and Denise Boyle  
Willard W. Brittain  
Cook & Krupa Inc.  
Cushman & Wakefield  
Deborah L. Duncan and Barnett Lipton  
The Durst Organization  
Janice Reals Ellig  
James B. Emden  
Ernst & Young LLP  
Fried Frank Harris Shriver & Jacobson  
Charlotte & Joseph Gardner Foundation  
General Motors  
Gibson, Dunn & Crutcher LLP  
Gordon & Silber P.C.  
Francis Greenburger Charitable Fund  
KeySpan Energy  
Michael J. Klingensmith  
Hon. Theodore R. Kupferman\*  
James T. Lee Foundation, Inc.  
Lehman Brothers  
Randy M. Mastro  
Bernie Mullin  
Daniel A. Neff  
James and Kathleen Nolan  
Douglas L. Paul  
Paul Hasting Janofsky & Walker, LLC  
Diane F. Perlmutter  
PricewaterhouseCoopers LLP  
RFR Holding LLC  
Ripplewood Foundation, Inc.  
Rosenberg & Estis, P.C.  
Sabin Metal Corporation  
Signature Construction Group, Inc.  
J. Matthew Singleton  
José Suquet  
Linda Vester and Glenn Greenberg  
Mary Ellen and Karl M. von der Heyden  
Wachtell Lipton Rosen & Katz  
White & Case LLP  
Hon. Myrtle G. Whitmore

**Gold Triangle**

**Gifts of \$10,000 or more**  
Ambrosino DePinto & Schmieder  
Anonymous  
Sally T. Bott  
Bowne & Co.  
Kevin and Patricia E. Burke  
Cravath, Swaine & Moore  
Richard Dattner & Partners  
Davis Polk & Wardwell  
Nelson Fernandez  
Hilb, Rogal & Hamilton Co. of Connecticut  
HSBC USA Inc.  
LeBoeuf, Lamb, Greene & MacRae  
William K. Lee, M.D.  
Barry and Robin MacTaggart  
The Moian Group  
George B. and Eleanor Bunin Munroe  
Pillsbury Winthrop LLP  
Timothy L. Porter  
William D. Rueckert  
Harold C. Smith  
YMCA Retirement Fund

**Red Triangle**

**Gifts of \$5,000 or more**  
The Atlantic Philanthropies  
Liza Bailey and Michael Musgrave  
Yateendra Bhatnagar  
Abbott and Linda Brown  
Paul Custer  
Maria del Toro  
Tim and Susan Flynn  
Max Friedman  
General Reinsurance Corporation  
The GreenPoint Foundation  
Betsy Jacobs  
John J. Mackowski  
Rena McGreevy  
Frank S. Moseley  
Jennifer N. Ott  
Cesar A. Perales  
Eileen L. and J. Frederick Rogers  
Stroock & Stroock & Lavan LLP  
Arthur G. Taylor  
Kenneth B. Turpin  
The Whitehead Foundation  
Zurich North America Foundation

**Youth Benefactor**

**Gifts of \$1,000 or more**  
George A. Banks  
Mindee H. Barham  
Pamela J. Bayless  
Bowman Family Foundation  
Michael J. Brady  
John and Rebecca Dhanaraj  
George DiFlavis  
Leslie C. Doll, Jr.  
Lucy N. Friedman  
Albert R. Gamber, Jr.  
Marsha and Neil Gerwrtman  
Icahn Charitable Foundation  
Hon. Joel Klein and Nicole Seligman  
Milbank Tweed Hadley & McCloy LLP  
Shelly and George Lazarus  
Stuart and Judy Mencher  
Family Foundation  
Carol and Stanley Nelson  
Mark Patterson  
David L. Phelps  
Susan Porter  
John L. Procope  
Mary Jane L. Raymond  
Blake W. Robinson  
Robert J. Rudin  
Gene K. Schaffer  
Mr. and Mrs. Dennis Sheahan  
Christopher Strome  
The Sulzberger Foundation Inc.  
Hon. Diana L. Taylor  
John L. Vogelstein  
Charles O. Wilkins  
Shelly Wimpfheimer  
Jeff Zadroga and Rick Farrar

*\*deceased*

**BRANCH CAMPAIGNS**

**BEDFORD**

**Anniversary Circle**  
**Gifts of \$150,000 or more**  
George W. and Cheryl J. Haywood  
Independence Community Foundation  
Paul Tudor Jones

**Metropolitan Circle**

**Gifts of \$75,000 or more**  
KeySpan Energy  
**President's Circle**  
**Gifts of \$25,000 or more**  
Robert Buckholz and Liz Anne Fontaine  
Mark B. Buller  
Francis Greenburger Charitable Fund  
Alan Fishman  
Stuart D. Freedman  
The Sirus Fund

**Gold Triangle**

**Gifts of \$10,000 or more**  
Glendon Breedy  
Alois Ricky Clemons  
Wynetta B. Erwin  
Gregg S. Hymowitz  
JP Morgan Chase Matching Gifts  
Reginald Manning  
Lisa Robins and Hervé Pauze  
Robert and Constance Shapiro  
Arthur Square  
Jonathan D. Stern  
Daniel P. Wiener  
Olumide Wilkey

**Red Triangle**

**Gifts of \$5,000 or more**  
Philip Banks  
Reginald Butts  
Lisa Christmas  
Ramona Frazier  
Ronald Glazer  
Colvin W. Grannum  
Patricia E. Hazlewood Ed.D  
Leonard T. Jordan  
Natalia Kanem  
Kevin Jeffrey  
Jesse Kelly  
Muss Development Company  
Jonathan Nelson  
Park Avenue Building & Roofing  
John Rappaport  
Gilbert Rivera  
Rochelle A. Ross

Raymond Saylor  
ShawnDya Simpson  
Abiba Wynn  
Jesse A. Young  
Rochelle Ross  
UBS Financial Services Matching Program  
Olumide S. Wilkey

**Youth Benefactor**

**Gifts of \$1,000 or more**  
Sarah H. Beatty-Buller  
Teresa Coaxum  
Cynthia C. Congress  
Tom Easton  
Paula and John Gavin  
Sharon Griffith  
Edward Herlihy  
Douglas Jones  
J. Jur Realty Corp.  
Clara M. McDonald  
Adrian C. Moore  
New World Foundation  
A. Richard Parkoff  
Mark Samuel  
Susan Shanklin  
Calvin J. Simons  
Debra Smallwood  
Thomas Watkins  
Hon. Myrtle G. Whitmore  
Joy Williams

**BRONX**

**Metropolitan Circle**  
**Gifts of \$75,000 or more**  
Elias Karmon  
Barbara and Garry Marshall Foundation  
The Munch Bilheimer Foundation

**President's Circle**

**Gifts of \$25,000 or more**  
A.L. Bazzini Co., Inc.  
The Beechwood Organization  
Dairyland U.S.A. Corp.  
Elizabeth D'Onofrio  
The Home Depot USA  
New York Yankees Foundation

**Gold Triangle**

**Gifts of \$10,000 or more**  
ALL Promotions, Inc.  
C & C Vending  
John Collazzi  
Richard Donatuti  
Martin Grossman/Bronx Lions Club  
Ram P. Gupta  
New York Organic Fertilizer Co.  
Ponce De Leon Savings Bank  
Porky Products, Inc.  
Les S. Thompson

**Red Triangle**

**Gifts of \$5,000 or more**  
Bronx Y Leaders  
Maria Camporeale  
Ramon A. Escobar  
Dolores Fernandez  
F. Ruggiero & Sons, Inc.  
F.W. Honerkamp  
Joe & Joe, Inc.  
Kass Industrial Supply Corp.  
Kiwans Club of Parkchester  
Langsam Property Services Corp.  
Marlarm Security Systems Inc.  
Odyssey Foods of NJ & NY Inc.  
Hon. Eugene Oliver  
Sterling Appraisals Association

**Youth Benefactor**

**Gifts of \$1,000 or more**  
Anonymous  
Gerry Arrighi  
Margaret Arrighi  
Banco Popular  
Mark Baron  
John Barone  
Bronx YMCA  
Bronx YMCA Jr. Knicks  
Buildstar Construction Corp.  
Frank Cassano  
Castle Hill Food Corp  
Center Sheet Metal, Inc.  
Civetta Cousins Joint Venture  
Cook & Krupa Inc.  
Ravenel B. Curry Foundation  
Dime Savings Bank of Williamsburgh  
E.H. Brunjes & Associates

Elite Suede & Leather  
Charles Ferrara  
Paula and John Gavin  
Hi Speed Envelope Co., Inc.  
Robert and Sherry House  
Jonathan Kazdan  
Peter and Andrew Lambos  
Monroe College  
Miranda and Alvin Moonesar  
Francisco Pagan III  
Mr. and Mrs. Anthony Paolerico  
PricewaterhouseCoopers LLP  
Louis E. Rios  
Rite Check Cashing Inc.  
Wanda Santiago  
Eric Soto  
Steve Spaner  
Universal Management  
Alex Vasilakis  
Dennis L. Vogel  
Felice L. Zambetti

**CAMPING SERVICES**

**Anniversary Circle**  
**Gifts of \$150,000 or more**  
Anonymous

**Metropolitan Circle**

**Gifts of \$75,000 or more**  
Roger M. Vasey

**President's Circle**

**Gifts of \$25,000 or more**  
Robert Kinder  
Michael Marocco  
Rodney Plaskett  
Arthur and Carol Taylor

**Gold Triangle**

**Gifts of \$10,000 or more**  
Bank of America Matching Gifts  
Zachary Carter  
The Gordon Fund  
Marcia Gowen  
The Heckscher Foundation for Children  
The Thorne Foundation

**Red Triangle**

**Gifts of \$5,000 or more**  
Joseph R. Biondo  
John and Maria Block  
Virginia Dean  
Walter Hawkins  
Joshua R. Heitler  
Jeffrey A. Hertz  
Susan E. Nangle  
Roetzel & Address (for M. Stramiello)  
Kent W. Sampson  
John and Pamela Snowden  
Tina Thomas

**Youth Benefactor**

**Gifts of \$1,000 or more**  
Roger and Mary Abramson  
James W. Allen  
Bruce and Susan Burger  
Robin E. Farr  
Paula and John Gavin  
Allison J. Hughes  
Eckhard Kemmann  
Kenneth R. Kulju  
New Era  
John C. Nystrom  
Eric Pinto  
Christine Pujdak  
Hank G. Serviss  
Seth Sprague Educational and  
Charitable Foundation  
Jeanne Sigler  
Gloria Stone Plottel  
Marvin B. Sussman  
Joseph R. Sykes  
Blair Thompson  
Richard Todd  
Emily N. Van Ingen

**CHINATOWN**

**Chairman's Circle**  
**Gifts of \$500,000 or more**  
Norman Lau-Ke

**Anniversary Circle**

**Gifts of \$150,000 or more**  
Bong and May Yu

**Metropolitan Circle****Gifts of \$75,000 or more**

Dr. Lisa Eng  
 Ken Fong  
 Lau Y. N. Realty Corporation  
 Jeannie Yuen

**President's Circle****Gifts of \$25,000 or more**

Gretchen Brigden  
 David Chin  
 The Goon Family in memory of  
 Bowden Goon  
 John Hung  
 Raymond H. Yu

**Gold Triangle****Gifts of \$10,000 or more**

Asian American Federation of New York  
 Karen Chau  
 Chinese Community Center  
 Ernest Eng  
 Jan He  
 Robert J. Hong  
 Lin Sing Association  
 Chun Yee and Andrew J. O'Neil

**Red Triangle****Gifts of \$5,000 or more**

AXA Advisors  
 Citigroup Private Bank  
 Yvonne Clayton  
 The Community Preservation Corporation  
 First American International Bank  
 Dr. On Hin Lau  
 The New York Chinatown Rotary  
 Foundation Trust  
 San Kiang Charitable Association, Inc.  
 Catherine Yu

**Youth Benefactor****Gifts of \$1,000 or more**

APartnership  
 Ken and Jennifer Balestrieri  
 Battery Park City Authority  
 Mark Beraman  
 Lisa and Theodore Borter  
 Richard Burgoon  
 Salvatore Buscemi  
 Chew Lun Lun Hing Association  
 Chinese Merchants Association  
 Commerce Bank  
 Con Edison  
 Paula and John Gavin  
 HealthPlus  
 Nancy and Daniel Hebert  
 Hok San Society  
 Hoy Sun Ning Yung  
 HSBC Bank USA  
 Joseph De Art Apparel Inc.  
 Michael Klidas  
 Scott Ho Ming Kwong  
 Denny Lee  
 Hong Lee  
 Connie Lim  
 David Louie  
 Andy Luo  
 Valerie Mason  
 Newmark New Spectrum Retail  
 Opening Ceremony  
 Philip General Construction  
 Amy So  
 Fred S. Teng  
 Richard and Dawn Truesdell  
 USA Chinese Women Federation

Verizon  
 David Wang  
 Carole Wu  
 Barbara Yee  
 Yook Ying Association

**CROSS ISLAND****Anniversary Circle****Gifts of \$150,000 or more**

Benjamin Moore & Company  
 Roslyn Savings Foundation

**President's Circle****Gifts of \$25,000 or more**

Anonymous  
 Northeast Paint and Hardware

**Gold Triangle****Gifts of \$10,000 or more**

Robert J. Ahlstrom, Jr.  
 Answer Vending  
 Patrick J. Brea  
 Robert Carneiro  
 Daniel Gerstman  
 Hunter Douglas, Inc.  
 Charles Sglain

**Red Triangle****Gifts of \$5,000 or more**

Matthew C. Ackert  
 Leo K. Barnes Jr.  
 Jose Gonzalez  
 Leslie A. Lerner  
 Craig Matson  
 Ross Mignoli  
 Valerie A. Reardon  
 James L. Sanders  
 Don Taggart

**Youth Benefactor****Gifts of \$1,000 or more**

Andrew K. Bose  
 Carol Cimilluca  
 Jean Dattner  
 Timothy Derham  
 Bryan A. Eck  
 Dana Feinberg  
 Kevin Forrestal  
 Paula and John Gavin  
 Alvin Golden  
 Harvey Gerstman Associates, Inc.  
 Keith E. Hicks  
 Donna LaSala  
 Bernadette Lee  
 Brenda R. Malone  
 Neal Modi  
 Charles Neuman  
 Pfizer  
 Leon H. Sears  
 Terrylynn Smith  
 Daniel Spoerel

**DODGE****Anniversary Circle****Gifts of \$150,000 or more**

Stephanie and Tim Ingrassia  
 Diane and Joseph Steinberg

**Metropolitan Circle****Gifts of \$75,000 or more**

Anonymous  
 Forest City Ratner Companies  
 Hank and Karoly Gutman  
 Robert S. and Martha A. Rubin

**President's Circle****Gifts of \$25,000 or more**

Kenneth and Diana Adams  
 Gil and Lois Aronow  
 William Ballaine and Joan Azrack  
 Jon and Cynthia Calder  
 Michael Cembalest and Rachel Hines  
 Edward and Katherine Cerullo  
 William and Marj Coleman  
 Stephen and Martha Dietz  
 Thomas J. Dillman  
 John and Anne Dockery  
 Buzz and Liz Ann Doherty  
 Mutual of America Matching Gifts  
 Onuoha Odum and Nicole O'Dell Odum  
 Kimberly S. Soule  
 Suzanne and Tim Tokarsky

**Gold Triangle****Gifts of \$10,000 or more**

Kenneth Adams, Sr.  
 Alexandra Alger and Dan Chung  
 Jim and Lisa Bedell  
 Peter Bloom  
 Jim and Barbara Bode  
 Timothy Bradley and Elliot Nolen  
 Brendan Coburn and Bertina Ceccarelli  
 Robert and Mary Beth Cresci  
 Thomas M. and Deborah Cutler  
 Alan and Harriet H. Dresher  
 John and Jill Gilbert  
 Matthew and Tita Greene  
 Michael Haddad and Joey O'Loughlin  
 J. M. Kaplan Fund  
 John and Diana Herzog  
 William B. May Company of Brooklyn Inc.  
 Renny Mendez and Leslie Henshaw  
 David Miller and Judy Scofield  
 Paul and Michele Mirman  
 William and Dana W. Nelson  
 Jean Paul Noens  
 David and Janet Offensend  
 William and Susan Rifkin  
 William S. Ross Real Estate  
 John and Connie Sargent  
 Bill and Kathy Weigel  
 Lake Wise and Carolyn Ellis

**Red Triangle****Gifts of \$5,000 or more**

John and Jenny Bailin  
 Mark and Diane Baker  
 The Boston Foundation  
 Tony and Nancy Bowe  
 Fraser & Fraser Counselors At Law  
 Eileen O'Connor  
 Bobbie Quint  
 Samuel and Karen Seymour  
 Marsha S. Zeesman

**Youth Benefactor****Gifts of \$1,000 or more**

Bradley M. Anderson  
 Beyer Blinder Belle  
 Frederick Bland  
 Cara and Bryan Bowers  
 The Carwill Foundation  
 Constans Culver Foundation  
 Peter Eikenberry  
 Donald Fraser and Mary Butler  
 Thomas Easton  
 John and Paula Gavin  
 John A. Golden  
 Andy and Amy Gordon  
 The Grubman Compton Foundation

Peter and Ellen Hamilton  
 Robert S. Harrison Foundation  
 Bill Hendrickson  
 Fredrick Hilles  
 Maitland Jones III and Perla Delson  
 The Robert Kaplan Foundation  
 Kevin Carberry Real Estate  
 Sylvia Kinard-Thompson, Esq.  
 Michael Lynch and Susan Baker  
 Kenneth and Gwen Mann  
 Danielle Moss-Lee  
 Willard J. Overlock Jr.  
 Otis Pratt and Nancy Pearsall  
 Peter and Peggy Patterson  
 Maureen Sapega  
 Carol C. Shuttleworth  
 Jeanne Sigler & Associates  
 Harvey Silverman  
 William and Sarah Skinner  
 Janine and Michael Smith  
 Julia Stanton  
 William C. Stutt  
 Lee and Cynthia Vance Foundation  
 Frances Varrone and Edward Slatwinski  
 Jonathan Weld  
 The Whitehead Foundation  
 Hon. Myrtle G. Whitmore  
 Rebecca L. Wright

**FLATBUSH****Anniversary Circle****Gifts of \$150,000 or more**

Constance Cincotta

**Gold Triangle****Gifts of \$10,000 or more**

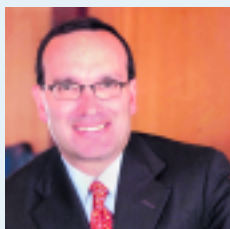
Rev. A.R. Bernard  
 Flatbush Federal Savings Bank  
 Grace Johnson-Claxton  
 Erlene King  
 Lilo Leeds  
 Dave A. Sahadath  
 Signature Construction Co.  
 Jim Terjesen  
 Frederick A. Watson

**Red Triangle****Gifts of \$5,000 or more**

Roger V. Archibald, P.C.  
 Matteo Bevilacqua  
 Miriam Corbin  
 Lascelles Daniels  
 Ivan Hodge  
 Honig Insurance Agency, Inc.  
 Kenneth P. Jordan  
 Michael A. Keller  
 Overseas Shipholding Group, Inc.  
 Ana Walker

**Youth Benefactor****Gifts of \$1,000 or more**

Anthony Alexis  
 Mark E. Anthony  
 Awand L. Brijmohan  
 Joy Crichlow  
 Derrick Dawson  
 El Caribe  
 Alisha Ellis  
 Joseph J. Ferrara  
 Paula and John Gavin  
 Michael Jones  
 Yvonne Richards-Menezes  
 Ruth Rose  
 Mattie M. Roter  
 William E. Rowe



**ROBERT H. SILVER, ASSOCIATION BOARD MEMBER  
 PRESIDENT AND CHIEF OPERATING OFFICER  
 UBS WEALTH MANAGEMENT USA**

“UBS is proud to be a sponsor of the YMCA’s program at The High School for Leadership and Public Service, where students who witnessed the horrors of 9/11 are learning the importance of the YMCA’s four core values of respect, responsibility, honesty and caring. These values are especially important to them as they continue to broaden their horizons, heal, and make progress toward productive adult experiences.”

Frederick J. Sookhai  
Joseph St. Rose  
William Thompson, Sr.  
Kecia Weaver, Esq.  
Hon. Myrtle G. Whitmore  
Stewart D. Williams

#### **FLUSHING**

**Champion's Circle**  
**Gifts of \$300,000 or more**  
Richmond County Savings Foundation

**Metropolitan Circle**  
**Gifts of \$75,000 or more**  
The Kupferberg Foundation

**President's Circle**  
**Gifts of \$25,000 or more**  
Kum Gang, Inc.  
Sang H. Pak  
John Ryu

**Gold Triangle**  
**Gifts of \$10,000 or more**  
Myeong U. Lee  
William K. Lee, M.D.  
Kurt Weishaupt

**Red Triangle**  
**Gifts of \$5,000 or more**  
Frank J. Antun Foundation  
Castle Oil Corporation  
Franklin F. Regan  
Zachary Stern

**Youth Benefactor**  
**Gifts of \$1,000 or more**  
Con Edison  
William Eng  
Lourie Figueroa-Montes  
Paula and John Gavin  
Thomas P. Hazell  
Pablo Hernandez  
Jacquelyn K. LeoGrande  
Muss Development Company  
Joseph Trapani  
Jean Vesnaver  
Debbie Weick

**GREENPOINT**  
**President's Circle**  
**Gifts of \$25,000 or more**  
Greenpoint Ambulance Corp.

**Gold Triangle**  
**Gifts of \$10,000 or more**  
John Tapper

**Red Triangle**  
**Gifts of \$5,000 or more**  
Roseanne Antonucci  
Paul J. Pullo  
Ernest G. Thifault

**Youth Benefactor**  
**Gifts of \$1,000 or more**  
Keith Balis  
Deborah Bowles  
Monsignor David Cassato  
Mikey E. Conway  
Miguel Cordova  
Cross County Federal Savings  
Thomas J. Curro, AIA  
Gerald Eisenhour  
Patricia Ferris  
Paula and John Gavin  
Martha Holstein  
Geraldina Laszlo  
John and Nancy Mauro  
Peerless Importers, Inc.  
Polish National Alliance  
Polish Slavic Federal Credit Union  
Leonard Quirino  
Ted Wozniak

**HARLEM**  
**Anniversary Circle**  
**Gifts of \$150,000 or more**  
Deloitte & Touche LLP  
Moody's Corp.

**Metropolitan Circle**  
**Gifts of \$75,000 or more**  
Avon Products, Inc.  
Time Warner Black Achievers in Industry

**President's Circle**  
**Gifts of \$25,000 or more**  
The Coca-Cola Bottling Company  
Savoy Magazine  
Michael Smart  
Time Warner Cable/ESP

**Gold Triangle**  
**Gifts of \$10,000 or more**  
The Bank of New York  
JP Morgan Chase  
National Trust for Historic Preservation  
Gerri Warren-Merrick

**Red Triangle**  
**Gifts of \$5,000 or more**  
Black Achievers Mentor Program  
Matthew L. Brown  
Rev. Calvin O. Butts, III  
James I. Clark  
Con Edison  
Blair M. Duncan  
Bernell K. Grier  
Sally Haigh-Alex  
Coy M. LaSister  
Mildred Love  
Dominic Mascara  
Delbert Spurlock

**Youth Benefactor**  
**Gifts of \$1,000 or more**  
John N. Blackman Sr. Foundation  
Roscoe C. Brown  
Lolita Chandler  
Willie E. Dennis  
Elaine Edmonds  
Michelle L. Gaines  
Paula and John Gavin  
GreenPoint Bank  
John C. Hill  
Hector Ramirez  
C. Chester Redhead  
Charles Taylor

**INTERNATIONAL**  
**Champion's Circle**  
**Gifts of \$300,000 or more**  
Anonymous

**President's Circle**  
**Gifts of \$25,000 or more**  
William K. Lee, M.D.  
Robert W. Norton  
Harold C. Smith  
Mattie V. Wharry

**Gold Triangle**  
**Gifts of \$10,000 or more**  
Anonymous  
James T. Beale, Jr.  
Alice L. Mairs  
N.A.F.Y.R.  
Pfizer Foundation Matching Gifts

**Red Triangle**  
**Gifts of \$5,000 or more**  
Lois Magee  
Kathy Neiber  
Mark Richards  
Richard M. Sword  
Denise Williams

**Youth Benefactor**  
**Gifts of \$1,000 or more**  
Anonymous  
Mr. and Mrs. Charles H. Ainsworth  
Theodore H. Ashford  
Buck Consultants  
Kay Clanton  
William P. Epke  
First Congregational Church of River Edge  
Frost Valley YMCA  
Paula and John Gavin  
JP Morgan Chase Foundation  
Tom Q. Moore  
David Kwang-Sun Suh

**JAMAICA**  
**Gold Triangle**  
**Gifts of \$10,000 or more**  
Anonymous  
Jamaica Chamber of Commerce  
Leroy Carmichael

**Red Triangle**  
**Gifts of \$5,000 or more**  
Albert Abney

Dun Well Maintenance Inc.  
Paul E. Gibson  
Juliet Lewis  
Edward D. Miller  
Ida Smith  
Victoria A. Williams

**Youth Benefactor**  
**Gifts of \$1,000 or more**  
Richard C. Bramwell  
Thomas Bynum  
Prince Felix  
Paula and John Gavin  
Sean Gumbs  
Bill McCreary  
James C. Metzger  
Milsco Industries  
J. Foster Phillips Funeral Home  
Harry Pontone  
Frederic Turbee  
The Whitmore Group, Ltd.  
Paul Williams

**LONG ISLAND CITY**  
**Metropolitan Circle**  
**Gifts of \$75,000 or more**  
Bloomberg

**President's Circle**  
**Gifts of \$25,000 or more**  
Kenneth J. Buettner  
Anthony Corbisiero  
David DaSilva  
Queensborough Rotary Club  
Reliant Energy  
Skylab General Contracting Corp.  
Universal Ford, Inc

**Gold Triangle**  
**Gifts of \$10,000 or more**  
ACC Construction  
Bruce Bendell  
Sandra Milad  
Mathis Pfohl Foundation  
Steinway & Sons  
Terjesen Associates  
Triboro Coach Corp.

**Red Triangle**  
**Gifts of \$5,000 or more**  
Carol Millar  
Joseph J. Previte  
Nancy Vardakis  
Verizon

**Youth Benefactor**  
**Gifts of \$1,000 or more**  
Liam Baker  
Steve Blank  
Sophronia Ganosis  
Paula and John Gavin  
Kemper Insurance Company  
Keri Kerim  
Charles Mormilo  
New York Life Foundation  
Doris Nowillo Suda  
NRG Energy-Astoria Gas Turbines  
Lucy Nunziato  
Romano Paving & Contracting Corp.  
Alan Siegel  
State Bank of Long Island  
Gerard Thornton  
Dennis J. Tortora

**MCBURNIE**  
**Metropolitan Circle**  
**Gifts of \$75,000 or more**  
Estate of Irwin Kuttner

**President's Circle**  
**Gifts of \$25,000 or more**  
Charlotte and Joseph Gardner Foundation  
Lois N. De Conca  
North Fork Bank  
Annette B. Osnos

**Gold Triangle**  
**Gifts of \$10,000 or more**  
Anonymous  
Dawn Norris Doak and Jim Doak  
Sheila R. Gleason  
Fred P. Goldhirsch  
Hugoton Foundation  
Nancy Matta  
Christian W. Miller  
Donna and Elliott Newcomb  
Newmark & Company Real Estate

Precor, Inc.  
Richard J. Rice  
Carol L. Smith  
Greer St. John  
Virginia Tranchik  
John N. Venteau

**Red Triangle**  
**Gifts of \$5,000 or more**  
William L. Haines  
Peter Hauspurg and Daun Paris  
Kurt R. Kaboth and  
Katherine Cunningham  
Alfred J. Lee  
Danny and Audrey Meyer  
OK Cigars, Inc.  
George E. Robb

**Youth Benefactor**  
**Gifts of \$1,000 or more**  
14th Street Union Square BID/LDC  
A & E Stores, Inc.  
Anonymous  
AXA Foundation  
B&H Photo-Video  
Lewis Bateman  
Dick and Diana Beattie  
Robert Blau  
Buchbinder & Warren LLC  
Norman Buchbinder  
Richard Chapman  
Chase Manhattan Bank  
Alice Chen  
Harvey Dachs  
William H. DeCuir  
Janet M. DeMarco  
Christina DeSantis  
E.H. Brunjes & Associates  
Emil Realty Co.  
Anne R. Fahim  
Mel Febesh  
FleetBoston Financial  
Forest Electric Corporation  
Jennifer Gardner  
Paula and John Gavin  
Mr. and Mrs. Budd Goldman  
Michael Guifoye  
Michael C. Jackson  
Jensen-Lewis Company, Inc.  
John S. Keogh  
Charles and Jessica Kibel  
Stanley Kravet and Martin Kravet  
Edward Lane  
Devorah and Yival Langnas  
Peter Levenson  
Martin R. Lewis  
Daniel Loeb and Deborah Pilitch  
Marom Corp.  
Stephanie and Carter McClelland  
Richard J. Montelione, Esq.  
Sam and Fanny Moskowitz Fund  
New York Look Enterprises Inc.  
Judy Ouziel  
Eric Petterson  
Pirret Foundation  
Stone Roberts and Larry Dunst  
John and Judy Rubin  
Susan Sarandon Foundation  
Donald L. Sherman  
Morton Silver  
Harold C. Smith  
Howard Stevens  
Sheldon Warshaw  
Stanley B. Wright  
G. Sterling Zinsmeyer

**NORTH BROOKLYN**  
**Gold Triangle**  
**Gifts of \$10,000 or more**  
Anonymous  
CLB Check Cashing, Inc.  
Signature Construction Group, Inc.

**Red Triangle**  
**Gifts of \$5,000 or more**  
Candis Best  
The Pumpkin Foundation  
Related Management Company, L.P.  
Leroy Sawyer  
Assemblyman and Mrs. Darryl C. Towns  
Israel Velazquez

**Youth Benefactor**  
**Gifts of \$1,000 or more**  
Bolton-St. Johns, Inc.  
Terry Brown  
C.L.B. Check Cashing, Inc.

Corbett Exterminating Corporation  
Diversified Inch By Inch, Inc.  
Miguel Feliciano  
First Data Corporation  
Paula and John Gavin  
Arthur Johnson  
Love Fellowship Tabernacle  
Loyd Keth Friedlander Partners, Ltd.  
Cesiah Mullane  
Charles Simpson  
Marlynn Snyder  
James Tillmon  
Rose Zuzworsky

**PROSPECT PARK  
Metropolitan Circle**

**Gifts of \$75,000 or more**  
DeLaCour Family Foundation

**President's Circle  
Gifts of \$25,000 or more**

Ann and Dwight W. Ellis  
Richard Ferrara  
Ong Family Foundation

**Gold Triangle  
Gifts of \$10,000 or more**

Jane E. Brody  
Kelly L. Hayes, in memory of  
Scott O'Brien  
Allan F. Kramer, II  
John P. Noonan  
Lindsay D. Shea  
Howard Smith

**Red Triangle  
Gifts of \$5,000 or more**

Ambac Assurance Corporation  
Elizabeth Burnett  
Sueyan Lee Kim and Robert Burton  
Howard Caretto  
Constance and Henry Christensen III  
Orville W. Dale  
George C. Dellapa  
Lawrence T. Hurwitz  
Dorothy and William Jesinkey  
David A. MacDougall  
Richard Northern  
Steve Oswald  
Cynthia Wingate

**Youth Benefactor  
Gifts of \$1,000 or more**

Sean C. Andrews  
Michael J. Brady  
Anna Maria and Anthony R. Caccamo  
David Collins and Maura Kehoe Collins  
Simone Dinnerstein and Jeremy Greensmith  
Susan G. Doban  
Susan Farrell and Edward D. Fusco  
Paula and John Gavin  
Sarah Gerstenzang  
Bernard J. Graham  
Katherine Harris  
Robert S. Kinkel  
Charles Monaghan  
Charles J. O'Donnell  
Park Slope 2000  
Bruce Paulsen  
Melisa Solomon  
Mahadai Somaroo  
South Brooklyn Lions Club  
Mary and David Tai  
Jean and Dino Veronese  
Sheila and Richard White

**STATEN ISLAND  
Champion's Circle**

**Gifts of \$300,000 or more**  
Richmond County Savings Foundation

**Anniversary Circle  
Gifts of \$150,000 or more**  
SI Bank & Trust Foundation

**Metropolitan Circle  
Gifts of \$75,000 or more**  
Joe Cammarata  
Staten Island Yankees

**President's Circle  
Gifts of \$25,000 or more**  
Salvatore Calcagno  
Leon DaSilva  
Samuel Newhouse Foundation  
Northfield Savings Bank

**Gold Triangle  
Gifts of \$10,000 or more**

Linda L. Allocco  
Donald J. Banks  
D'Arrigo Family  
John DaSilva  
Robert J. Fani  
Hall & Hall  
Max S. Kadin  
KeySpan Energy  
Claude Knight  
Paul Pizzo  
Rampulla Associates Architects  
Russo, Scamardella & D'Amato P.C.  
Robert J. Scamardella  
Frank Scarangelo  
Signature Construction Group, Inc.  
Slattery Skanska Wallwork Group

**Red Triangle  
Gifts of \$5,000 or more**

Binsky & Snyder LLC  
Paul Campione, Jr.  
Con Edison  
James Coyle  
Cullen & Dykman  
Charles D'Arrigo  
Harry P. Doherty  
Peter Falcone  
J.P. Morgan Chase  
Harold C. Kaplan  
Lazard Freres & Co. LLC  
James McBratney  
Newmark & Co. Real Estate, Inc.  
Paulus Sokolowski & Sartor LLC  
Carrie Robinson  
Kate and Hunter Robinson  
Russo Piccirro Maloy Insurance  
Peter Salvatore  
Staten Island Advance/Newhouse  
Rodney Stilwell  
WDF, Inc.

**Youth Benefactor  
Gifts of \$1,000 or more**

ABCO Refrigeration Supply Co.  
Stathi Afendoulis  
Bear Wagner Specialists, LLC  
J. W. Bedell-Pizzo  
Bedford Construction Corp.  
Michael Biagioli  
Jay Chazanoff  
Citigroup  
Joanne Costa  
Christine Delgorio  
DeSantis, Kiefer & Shall  
DeSola Group  
Karen DiBona  
Dickstein Shapiro Morin & Oshins  
Kathryn Drew  
Edwards Platt & Deely, Inc.  
Paul Ferrara  
Framboise Catering  
Freed Foundation Inc.  
Paula and John Gavin  
Cleveland Guy  
Jimmy Max  
Lehman Brothers  
Matthews Funeral Home  
Joanne Megna  
Pisilli, Inc  
Frank Puleo  
Scaran Oil Service Co., Inc.  
Barbara Simpson  
Sherilyn D'Arrigo Swords  
Peter Tesoriero  
Wales Darby, Inc.  
Paul Williams

**VANDERBILT  
President's Circle  
Gifts of \$25,000 or more**

Daniel E. Tomai

**Gold Triangle  
Gifts of \$10,000 or more**

The Capital Group Companies, Inc.  
Netpulse Communications

**Red Triangle  
Gifts of \$5,000 or more**

Janet Campagna  
Albert Hsu  
Betsy Jacobs  
McCormack Contracting  
Margaret P. Nastro  
Prescott Foundation

**Youth Benefactor  
Gifts of \$1,000 or more**

A & W Fire Controls  
James A. Angelone  
Avryl and Mike Beck  
DeLaCour & Ferrara Architects  
Gail Duke  
James E. Fitzgerald  
Paula and John Gavin  
Gerrett Painting Company, Inc.  
Charles A. King  
Najib Lamhaouar  
Dolores Marsh  
Lissa Mattson  
Thomas E. Mulroy  
Kimberly Paparello  
Perelson & Weiner LLP  
Kimberly L. Quinones  
John P. Rennie  
Alexander N. Wolff

**WEST SIDE  
Chairman's Circle  
Gifts of \$500,000 or more**  
Anonymous

**Champion's Circle  
Gifts of \$300,000 or more**  
ABC Inc. Foundation

**Metropolitan Circle  
Gifts of \$75,000 or more**  
The Joseph LeRoy and  
Ann C. Warner Fund  
Phyllis Poland

**President's Circle  
Gifts of \$25,000 or more**  
Anonymous  
Aon Foundation  
The Bari M. Lipp Foundation  
Litwin Foundation, Inc.  
McCormack Contracting, Inc.  
Doris and Charles Michaels  
Ethel Patterson and Michael Bandzier  
Ira M. Resnick Foundation, Inc  
Julie and Matt Richardson  
YMCA Co-op Nursery School  
Clayton Young and Cecilia Blewer

**Gold Triangle  
Gifts of \$10,000 or more**  
A.D. Winston  
Anonymous  
Kathleen Burke and  
Bruno Mastropasqua  
Nancy and Howard Feinglass  
Gabelli Asset Management Company  
Hon. Theodore R. Kupferman\*  
Douglas and Victoria Larson  
Sweet Construction Corporation  
Tobe Associates, Inc.  
Jack Weisberg  
Melanie Wymore

**Red Triangle  
Gifts of \$5,000 or more**  
Anonymous  
Mr. and Mrs. Harry C. Barkhorn  
Brian Byrd  
Peter Hoontis  
Howard Gilman Foundation  
Inner City Handball Association, Inc.  
Perry and Aida Parker  
Veronica Pollard and Joel Dreyfuss  
Mr. and Mrs. Herbert W. Swain, Jr.  
William and Marina Thomas  
Sheri Woodruff

**Youth Benefactor  
Gifts of \$1,000 or more**

Anonymous  
Airvel A/C Corporation  
Allan Bahn and Lori Pollan  
Brad D. Burke  
Jennifer Byron  
Evaristo Cruz, Jr.  
The Caplan Family Foundation  
Jackie Didier  
Donald Blair Architects  
Alycia and James Donohue  
Paula and John Gavin  
Mr. and Mrs. John D. Gilliam  
Joseph and Carson Gleberman  
Goldman Sachs & Co.  
Robert Goldman

Jerry A. Hastings  
Mrs. Joan Helperrn  
Richard Hockman and Sharon Rehme  
Suzanne and Robert Hoglund  
Chris Huntington  
Beverly J. Lacy  
In Memory of Stanley J. Love  
Sonia and Thomas Lobue  
Latifa and Patrick Metheny  
John W. Mills  
Amanda Morgan  
Thomas E. Mulroy  
The Port Authority of New York  
& New Jersey  
Marcus and Jacqueline Rayner  
Mr. and Mrs. Robert Raucci  
Thomas Ruggieri and Juliana Wilson  
Mr. and Mrs. W. Gregg Slager  
Steven D. Sweeting  
Rudy and Laura Tauscher  
Suzanne Thompson-Turner  
Courtney O. Wadsworth  
Charles Weilman  
Alexander Zagores

*\*deceased*

**GOVERNMENT CAPITAL GRANTS  
Capital Grants**

**Office of the Mayor,  
City of New York**

**New York City Council**  
Tony Avella  
Gale Brewer  
Bill de Blasio  
Erik Martin Dilan  
Stephen J. Fiala  
Alan Gerson  
Lloyd Henry  
Andrew Lanza  
John Liu  
William Perkins  
Peter Vallone Jr.  
Albert Vann  
David Yassky

**Office of the Manhattan  
Borough President**

**Office of the Staten Island  
Borough President**

**Office of the Bronx  
Borough President**

**Office of the Brooklyn  
Borough President**

**Office of the Queens  
Borough President**

**New York State Assembly**  
Denis Butler  
James F. Brennan  
Vivian Cook  
Ruben Diaz Jr.  
Deborah J. Glick  
Brian M. McLaughlin  
Joan Millman  
Nick Perry  
Peter M. Rivera  
Annette Robinson  
Mark Weprin  
Keith L. Wright

**New York State Senate**  
John Marchi  
Frank Padavan  
Malcolm A. Smith

**United States Congress**  
Edolphus Towns  
Gary L. Ackerman  
Joseph Crowley  
Vito Fossella  
Gregory W. Meeks  
Jerrold L. Nadler  
Charles B. Rangel



# Endowment

Securing the future of the YMCA and its mission to New York City youth

## THE HERITAGE SOCIETY

Members of the Heritage Society of the YMCA of Greater New York have made current or long-range gifts to the YMCA's Endowment Fund. These commitments of cash or promised assets such as a bequest intention, remainder trust or life insurance policy help to secure the future of the YMCA and its mission to New York City youth.

Irving Barth  
Saul Bergman  
Charles Betts  
Richard J. Boyle  
Susan P. Brachtl  
Louis Braun  
Ruth Cooper  
Thomas J. Dillman  
Joseph DiMaggio  
Daniel E. Emerson  
Daniel Epstein  
Mr. & Mrs. Benito Fernandez  
Max Fernbach  
Paula L. Gavin  
Hon. Newton Greenberg  
Robert Hanley  
Mr. & Mrs. James Havlick  
Ms. Joyce Healy  
Mr. Charles H. Howell  
Mrs. William A. Howes  
Phillip Imperato  
Betsy Jacobs  
Benjamin R. Jacobson  
Mr. & Mrs. Walter I. Jacoby  
Mr. & Mrs. John Jorgensen  
Elias Karmon  
Martin Keefe  
Archibald. E. King, Jr.  
Robert M. Kirk  
Irwin Kuttner  
Robert Lasky  
William K. Lee, M.D.

Fred Lifavi  
Dolores Marsh  
John Mercier  
Paula Michtom  
Mrs. Maurice T. Moore  
Minerva Munch  
Florence Oser  
John and Susan Preis  
John Prudden  
Peter Ramsey  
Grace Richardson  
Mrs. Kenneth H. Rockley  
J. Frederick Rogers  
William A. Roos  
John Roth  
William D. Rueckert  
Mrs. John H. Schweiger  
Paulette Segal  
Barnet Sheiner  
Donald Sherman  
Luther and Leora Sies  
Harold C. Smith  
Mr. and Mrs. Edmund Speer  
Mr. and Mrs. Charles T. Stewart  
Mr. and Mrs. Arthur Taylor  
Kenneth B. Turpin  
Mr. and Mrs. Kurt Weishaupt  
Mr. and Mrs. Daniel West  
Hon. Myrtle G. and  
Quentin Whitmore  
Adela S. and Lucius Wilmerding III

The Fund is managed by professionals under the supervision of the Board of Directors. To preserve a permanent trust, the YMCA of Greater New York draws on only a portion of the annual income from the Endowment Fund each year.

For information about bequests or other deferred gifts to the YMCA, please call Christopher Strome in the Development Office at 212-643-4030.

.....  
*William Chock, who immigrated from Ecuador in the late 1980s, began taking ESL classes at the McBurney Branch soon after his arrival and has stayed connected to the Y since then. His first job in the United States was as a porter at the Y's Association headquarters. He later worked at the Newark Y where he met his wife, and also for several years at the Vanderbilt Y. In his spare time, he polished his English, earned his GED, and a number of professional licenses. For the last seven years, he's been a maintenance manager at the Omni Hotel. When asked to return as part-time head of maintenance, William did not hesitate because he considers the YMCA family.*  
.....



Photo: Jerry Speier

## WILLIAM CHOCK, ASSOCIATION OFFICE

“Everything I have in America is through the Y. The YMCA helped me as a new immigrant succeed in this country. I learned English at the YMCA, found a job and a place to live, and met my wife because of the Y. I owe the Y a lot.”

# Financials



## **STATEMENT OF ACTIVITIES** (for the years ending December 31—dollars in thousands)

	<b>2004</b>	<b>2003</b>
<b>Operating Revenue and Support</b>		
Contributions	\$15,315	\$17,251
Government contracts	12,678	13,647
Membership dues and program fees	63,672	59,582
Financial Assistance	(1,317)	(1,334)
Residence and related services	19,233	17,867
Investment income	1,633	1,731
Total operating revenues and support	\$111,214	\$108,744
<b>Operating Expenses</b>		
Salaries and related expenses	\$68,410	\$65,165
Program and operating expenses	44,124	36,944
Fundraising expenses	744	2,177
Total operating expenses	\$113,278	\$104,286
Change in net assets from operations	(\$2,064)	\$4,458
<b>Non-operating Changes</b>		
Investment gains (loss), net	\$2,779	\$6,442
Gain on property, net	0	6,985
Other	(47)	483
Total non-operating changes	\$2,732	\$13,910
Total changes in net assets	\$667	\$18,368
Net assets at beginning of year	\$156,145	\$137,777
Net assets at end of year	\$156,812	\$156,145

## **STATEMENT OF FINANCIAL POSITION** (for the years ending December 31—dollars in thousands)

<b>Assets</b>		
Cash	\$7,468	\$9,226
Receivables, net	26,451	24,286
Investments, at market	35,054	33,070
Funds held in trust for the YMCA	6,992	6,537
Property, plant and equipment, net	149,154	143,418
Debt service reserve fund	4,748	4,708
Deferred charges	2,855	1,866
Other assets	2,473	955
Total assets	\$235,195	\$224,076
<b>Liabilities</b>		
Accounts payable and accrued expenses	\$18,564	\$15,737
Accrued salaries and related expenses	4,897	4,622
Debt obligation	45,893	43,917
Deferred charges	9,029	3,657
Total liabilities	\$78,383	\$67,931
Total net assets	\$156,812	\$156,145
Total liabilities and net assets	\$235,195	\$224,076

# Board of Directors

Contributing time and  
resources to help young people who  
need it the most

## CHAIRMAN

**Barry Salzberg** Deloitte & Touche USA LLP

## MEMBERS-AT-LARGE

**Robert Annunziata** ATEF, Inc.

**Janie Elizabeth Bailey**

**Frank J. Bivona** Financial Guaranty Insurance Company

**Jeff Blau** The Related Companies, L.P.

**Douglas Braunstein** JP Morgan Chase

**Kevin Burke** Con Edison

**Patricia Costa** EDS

**Carlos Dominguez** Cisco Systems, Inc.

**Janice Reals Ellig** Gould • McCoy • Chadick • Ellig

**Nelson Fernandez** Burson-Marsteller

**Timothy P. Flynn** KPMG

**Marcia Gay Harden**

**Gail Hilson**

**Hon. Raymond W. Kelly** New York Police Department

**Shaygan Kheradpir** Verizon Communications

**Michael J. Klingensmith** Time Inc.

**Christine LaSala**

**Glenn Lau-Kee** Koo, Larrabee, Lau-Kee & Lane LLP

**Consuelo Mack** CNBC

**Randy M. Mastro** Gibson, Dunn & Crutcher LLP

**Daniel A. Neff** Wachtell, Lipton, Rosen & Katz

**Timothy L. Porter**

**Richard T. Roberts**

**Clayton S. Rose** Logan Pass Partners, LLC

**William D. Rueckert** Rosow & Company, Inc.

**Stephen B. Siegel** CB Richard Ellis

**Robert H. Silver** UBS Wealth Management USA

**Hon. Diana L. Taylor** New York State Banking Department

**Hon. Merryl H. Tisch** New York State Board of Regents

**Alison A. Winter** Northern Trust Corporation

**Omar Wasow** BlackPlanet.com

**Seth H. Waugh** Deutsche Bank Americas

## HONORARY MEMBERS

**Willard W. Brittain**

**Hon. Joel Klein** New York City Department of Education

**Hon. Myrtle G. Whitmore**

## BRANCH REPRESENTATIVES ON THE ASSOCIATION BOARD OF DIRECTORS

**K. Candis Best** Woodhull Hospital

**Frank P. Carbone** St. Stan's Athletic League

**Annette Osnos** Business Week

**William Thomas** New York Philharmonic

**Raymond Yu** Yuco Management Inc.

## YOUTH MEMBERS AT LARGE

**Jia Llon-Yee** Chinatown YMCA

**Janae Leath** Jamaica YMCA

*as of April 27th, 2005*

## ASSOCIATION LEADERSHIP

### President & CEO

Jack Lund

### Executive Vice President & Chief Financial Officer

Michael Guarino

### Senior Vice President & Chief Operating Officer

Peter P. Hoontis

### Senior Vice President & Chief Administrative Officer

Paul Custer

### Senior Vice President, Operations

Betsy Jacobs

### Vice President, Property Management

Yateendra S. Bhatnagar

### Vice President, Fund Development

Mania Boyder

### Vice President, Public Affairs

Maria del Toro

### Vice President, Strategic Marketing

Reginald C. Hamlett

### Vice President, Human Resources

Alvin Lee, Jr

### Vice President, Youth & Family Services

Rochelle G. Wimpfheimer

### Corporate Secretary

Madeline C. Ford

### Senior Executive, Staff Development

Loretta Trapani

### Senior Executive, Government Contracts

Denise Zimmer

### Senior Branch Executive

Linda Allocco

### Senior Branch Executive

Michael Keller

### Director, Information Technology & Fiscal Analysis

John Atwater

## BRANCH LEADERSHIP

### Bedford Stuyvesant

Glendon Breedy, *Chair*

John Rappaport, *Executive Director*

### Bronx

Alexander Vasilakis, *Chair*

Elizabeth Toledo, *Executive Director*

### Camping Services

Susan Nangle, *Chair*

John Nystrom, *Executive Director*

### Chinatown

Raymond Yu, *Chair*

Hong Shing Lee, *Executive Director*

### Cross Island

Dan Gerstman, *Chair*

James Sanders, *Executive Director*

### Dodge (formerly Brooklyn Central)

Liz Ann Doherty, *Chair*

Eileen O'Connor, *Executive Director*

### Flatbush

Dave Sahadath, *Chair*

Sean Andrews, *Int. Executive Director*

### Flushing

Sang H. Pak, *Chair*

Victoria Williams, *Executive Director*

### Greenpoint

Frank Carbone, *Chair*

Paul Custer, *Int. Executive Director*

### Harlem

Bernell Grier, *Chair*

Elaine Edmonds, *Executive Director*

### International

Harold Smith, *Chair*

Bonnie Mairs, *Executive Director*

### Jamaica

Prince Felix, *Chair*

Betsy Jacobs, *Int. Executive Director*

### Long Island City & Catalpa Center

Sophia Ganosis, *Chair*

Michael Keller, *Executive Director*

### McBurney

Annette Osnos, *Chair*

Christian Miller, *Executive Director*

### North Brooklyn

K. Candis Best, *Chair*

David Christmas, *Executive Director*

### Prospect Park

Gene Szuffita, *Chair*

Sean Andrews, *Executive Director*

### Staten Island

Frank Scarangelo Jr., *Chair*

Linda Allocco, *Executive Director*

### Vanderbilt

Daniel Tomai, *Chair*

Betsy Jacobs, *Executive Director*

### West Side

William Thomas, *Chair*

Gary Villaverde, *Int. Executive Director*

## YMCA OF GREATER NEW YORK BRANCH LOCATIONS

**Association Office**  
333 Seventh Avenue, 15th Floor  
New York, NY 10001  
(212) 630-9600

**Bedford Stuyvesant YMCA**  
1121 Bedford Avenue  
Brooklyn, NY 11216  
(718) 789-1497

**Bronx YMCA**  
2 Castle Hill Avenue  
Bronx, NY 10473  
(718) 792-9736

**Camping Services**  
300 Big Pond Road  
Huguenot, NY 11386  
(845) 858-2200

**Catalpa Center**  
69-02 64th Street  
Ridgewood, NY 11385  
(718) 821-6271

**Chinatown YMCA**  
345-A Broome Street  
New York, NY 10013  
(212) 219-8393

**Cross Island YMCA**  
238-10 Hillside Avenue  
Bellerose, NY 11426  
(718) 479-0505

**Dodge (formerly Brooklyn Central)**  
357 Ninth Street  
Brooklyn, NY 11215  
(718) 625-3136

**Flatbush YMCA**  
1401 Flatbush Avenue  
Brooklyn, NY 11210  
(718) 469-8100

**Flushing YMCA**  
138-46 Northern Boulevard  
Flushing, NY 11354  
(718) 961-6880

**Greenpoint YMCA**  
99 Meserole Avenue  
Brooklyn, NY 11222  
(718) 389-3700

**Harlem YMCA**  
180 West 135th Street  
New York, NY 10030  
(212) 281-4100

**International YMCA**  
5 West 63rd Street  
New York, NY 10017  
(212) 727-8800

**Jamaica YMCA**  
89-25 Parsons Boulevard  
Jamaica, NY 11432  
(718) 739-6600

**Long Island City YMCA**  
32-23 Queens Boulevard  
Long Island City, NY 11101  
(718) 392-7932

**McBurney YMCA**  
125 West 14th Street  
New York, NY 10011  
(212) 741-9210

**North Brooklyn YMCA**  
570 Jamaica Avenue  
Brooklyn, NY 11208  
(718) 277-1600

**Prospect Park YMCA**  
357 Ninth Street  
Brooklyn, NY 11215  
(718) 768-7100

**Staten Island YMCA  
(South Shore Center)**  
3939 Richmond Avenue  
Staten Island, NY 10312  
(718) 227-3200

**Staten Island YMCA  
(Broadway Center)**  
651 Broadway  
Staten Island, NY 10310  
(718) 981-4933

**Vanderbilt YMCA**  
224 East 47th Street  
New York, NY 10017  
(212) 756-9600

**West Side YMCA**  
5 West 63rd Street  
New York, NY 10023  
(212) 875-4101



YMCA

We build strong kids,  
strong families, strong communities.

[www.ymcanyc.org](http://www.ymcanyc.org)