

**REPLACEMENT PARTS
REVISED PRICE LIST**

9/15/20 • PRICE \$4.00

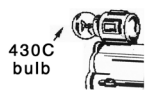
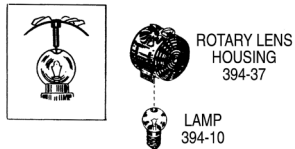
DR. TINKER®

CELEBRATING 60+ HAPPY YEARS IN TRAINS

HAL DAVID LAUGHRIDGE



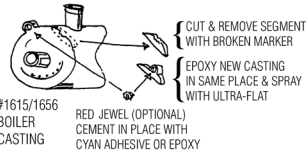
PART #	DESCRIPTION	PRICE	PART #	DESCRIPTION	PRICE	PART #	DESCRIPTION	PRICE
001E-53C	Ornam. Whistle w/screw	\$ 25.00	22-12	Spring, Horn Button, for LW Transf.	.75	45-58	Solder Lug (O)	.50
001M-33	Motor Brush, 182, Pr	1.00	22-13	Push Rod	\$ 1.00	45-70	Drive Screw, Spiral	.25
011-11	"O" Ga Insul. Pin (AKA5543) (N) Doz	\$ 3.00	22-64	Tension Washer, Crane	.50	45-73	Lockwasher, Serrated Outside	.25
022C-C	Controller Contact w/Rivet (R)	1.25	22-65	Rivet, for Pilot, AKA 530-40	.30	47-44	Pedestrian Gate (O)	10.00
022C-1	Switch Controller (O)	14.00	22-85	Handle w/Ring & Lens LW (R)	12.95	47-73A	Lantern for Xing Gate (R)	12.00
022C-51	Fixed Voltage Plug w/Screw (AKA 711-151)	2.50		 HANDLE ASSY. 22-85		50-RLS	Reletter Set, pair	4.00
022-14	Stud, Center Rail	1.00	22-86	Cap, Green Translucent, LW (R)	3.00	50-17	Roller Pick-up Assy. (O)	7.00
022-36	Drive Screw, Ni (O)	.30	22-97	Tension Washer, Crane Car (O)	1.00	50-19	Spring, Pivot	.50
022-40	Swivel Pin (R)	1.50	24-4	Aux. OTC-1 Rail Clip ea	2.10	50-23	Collector Rivet, Br	.40
022-69	Motor Mount Nut, w/Screw	1.00	25-C	Bumper Cover	5.00	50-24	Spring, Grounding, Copper	1.50
022-79	Shoulder Rivet (3356-32)	.75	25-30	Control Dial SW (R)	8.00	50-29	Spring, Contact, Copper (O) (LIM)	1.50
022-88	Screw, Switch Bottom, 2 X 3/16 BHST	.25	28-6	Red Screw Base Lamp, 18V (432)	.75	50-31	Bumper, Gang Car	3.50
027C-1	Track Clip, Dz. (N)	6.00	30-6	Roof/Water Tank, Gray, or Red w/2 holes (R)	20.00	50-36	Endrail, Black, Stamped (R)	2.50
0333-100	Satellite, Black/Silver, 3509 (R)	10.50	30-18	Washer, Water Tower Roof	.75	50-38	Contact Plate (O)	3.00
0565-26	Rubber for Lockpin/Exploding Car w/Pin	1.75	31-5	Ground Pin, New Original, 12-pack AKA 31-15	5.00	50-41	Solder Lug	.50
0565-45	Terminal for 2 pin lamp (350-31)	.75	31-7	Center Rail Connector, Super "O", AKA 31-45	.50	50-42	Field Assem., Split Field (N, O)	20.00
2-47	Armature Pinion Gear, .112" Shaft	4.00	31-16	Track Pin, Super "O", GarGraves, AF (dz)	5.00	50-50	Armature, Tested (O)	30.00
2-87	Compound Gear for BILD-A-LOCO	3.00	32-10	Insul. Track Pin, Nylon, Super "O"	.55	50-59	Brushplate Assy. Specify Cast or GG-1 Horn (R)	17.95
2-101/-102	BAL Brush, Spring, pr	5.00	32-20	Power Bus, Insul., Super "O" (32-10)	.45	50-65	Pinion Shaft, w/Gear (O)	4.00
2-111	#6 Lock Washer, Split Ring	.20	32-30	Ground Rail Pin	5.00	50-70	Cover, Printed (R)	12.00
5C-99	Whistle Mounting & Brushplate Nut	.50	32-31	Power Rail Pin (to "O" Ga)	.50	50-83	Crewman, Rotating (Olive - 3.55)	3.00
6-27	Screw #6 Recessed	.50	32-32	Insulating Pin	.50	50-84	Crewman, Fixed	3.00
6TC-1	Crane Truck (R)	36.00	32-33	Super "O" to "027" Adapt. Track Pin, ea	.50	50-98	Nylon Axle Bushing (N, O)	1.25
6TC-5	Bottom Frame Stamping (R)	2.15	32-34	Power Rail Pin (to "0-27")	.50	50-99	Rivet for Contact Spring	.50
6TC-8	Collector Roller Assy. (R)	5.00	32-35	Insulating Pin (to "0-27")	.50	50-100M	Horn, Ornam, Cast or Plastic Horn for Diesels	1.00
6TC-10	Coupler and Coil Assy.	10.00	32-55	Super "O" Insul. Track Pin (R) (LIM) ea	4.00		 ORNAMENTAL HORN 50-100	
6TC-12	Shoe Spring, Copper	1.00	33-25	Pinion Gear Armature, Early Std. Ga., 12T, 40P	4.00	50-100P	Horn, Plastic	1.00
6TC-18	Truck Side, Molded (O)	2.00	33-42	Brush Tube, w/Cap & Screw, pair	5.00	50-102	Bearing, Ball	.50
6TC-19	Center Wheel, No Flange	1.00	35-5	Crown w/Globe (R)	6.00	50-300	Bulb, 6V, Clear, Screw Base, U.S.	1.00
6TC-21	Bottom Frame Assy w/Shoe (U.O)	7.00	35-24	Finial, Ni	3.00	50-301	Bulb, 6V, Green, Screw Base	.75
6TC-25	Truck Stud for Crane Truck	1.50	36-2	Super "O" RC Bar (R)	6.00	50-302	Bulb, 6V, Red, Screw Base	.75
6TC-29	Fixed Drawbar	3.00	38-R	Roof, specify No Holes & Color (R)	25.00	51-5	Railing, Short Black or Yellow	1.50
7-1	Binding Post Nut (O, U)	1.50	38-17	Coil Spring	.50	51-60	Railing, End, Low Profile	5.50
8-10FHB	Flag Holder, Br, ea, w/screw	2.00	38-19	Side Rod, Pre-War Elec.	2.50	51-66	Side Rail, Black	3.50
8-10MB	Motor Brush, Prewar, Std. Ga, Pair	2.00	38-41	Roof Plug (O)	7.00	51-300	Bulb, 6V, Bayonet Base, Clear (Q-90)	.50
8-22BR	Manual Reverse Knob	3.00	38-42	Handrail Stanchion, Brass Solder On (for #33)	2.50	51-301	Bulb, 6V, Bayonet Base, Green	.75
9T-5	Jour./Tin Pl. Truck, Bl, Ni, Cu, Br, specify	1.00	38-43	Roof Stud, 4 5/8" L (O)	2.75	51-302	Bulb, 6V, Bayonet Base, Red	.75
9T-16	Ground Washer for Trucks	.50		E-mail: dave@drtinkertrains.com		52-5	Outrigger (N)	3.00
10-14	Armature Bearing Super Motor	2.50		Web Site: www.drtinkertrains.com		52-7	Fire Fighting Car, Seat/Gun	25.00
10-100	Coupler Rivet for 390	1.25		(781) 862-5798 (207) 282-2206			 SEAT 52-7	
11-24	B6 Washer	.40		Cell Phone (978) 500-1992		52-10	Fire Hose, White (R)	2.50
12-300	Bulb 6V Clear (2 Pin) USA	1.80	38-45	Spout, Water Tank (R)	5.50	52-13	Nozzle, Machined (R)	2.00
12-301	Bulb 6V Red, 2 Pin (12-301)	2.75	38-48	Spout Shield (R)	1.50	52-14	Compressor, Fire Car - Gray (R) (SOLD OUT)	7.50
12-302	Bulb 6V Green (2 Pin)	2.75	38-49	Pin for Spout (R), Black	1.00	52-19	Lamp Isolation Pad	2.00
19-300	Bulb 14V Clear (2 Pin) USA	1.80	38-65	Roof Nut, Acorn, Black	.75	52-26	Fireman, Black (O)	3.50
19-301	Bulb 14V Red (2 Pin)	2.75	41-8	Armature Bearing, Bottom	.75	52-30	Pinion & Shaft	5.00
19-302	Bulb 14V Green (2 Pin)	2.75	41-12	Worm Wheel, Br (Gear) 41, 51, 53, 55	4.00	52-36	Fire Car Bumper, Not Decorated (O)	2.50
19-303	Bulb, 2 Pin, 14V Frosted	1.80	41-18	Collector Assy. (O)	8.00	52-40	Red Lens	1.00
20-20	Rivet for SL5-48 Prewar "O" Cont. Assy.	.75	41-22	Pick-up Roller, (AKA 2023-43)	1.50	53-9	Railing, Long	2.00
20-22E	Side Mount Circuit Breaker, Encased, KW	9.00	41-23	Roller Pin (AKA 2023-44)	.50	53-10	Plow, Yellow (R)	15.00
20-31	KW Bottom Dial, No Knob	9.00	41-24	Spring, Collector	.50	53-14	Truck Assy., No Coupler (O)	12.00
20-34	Knob Cap "A", KW Transf. (R)	1.00	41-26	Collector Insulation	1.00	53-40	Rivet GP Pilot (22-65)	40
20-36	Spacer for KW Control Knob	2.00	41-27	Armature Shaft Bearing, Nylon (53)	.75	53-300	Bulb, 14V, Bay Base, Clear (US @ 1.00 ea.)	.75
20-37	KW Top Dial Handle, No Nameplate	10.00	41-50	Coupler Truck Assy. (O)	14.00	53-301	Bulb, 14V, Bay Base, Green	.75
20-40	Knob Cap "B", KW Transf. (R)	1.00	41-54	Rivet for Coupler Armature (6510-130)	.30	53-302	Bulb, 14V, Bay Base, Red	.75
20-43	Rod, Push Button	1.00	41-55	Grounding Spring	.75	54-13	Drive Belt (R)	2.50
20-44	Insulating Washer	.80	41-65	Side Rail, 2.5" Long, Black (O)	3.50	54-15	Contact Roller Assy. (N,O)	5.00
20-45	Resistor Assy. (NOS) (LIM)	3.00	41-69	Rivet, Handrail	.25	54-30	Ballast Tamper Front, Brown (8578-014)	12.00
20-49	Rivet for Mounting Circuit Breaker	.25	41-75	Screw, Side Rod, Large	1.25	54-39	Antenna, Ballast Tamper	1.50
20-50	Nameplate, KW Transf. (R)	7.00	41-78	Brushplate Assy.	10.00	54-126	Tie Jector Actuator (O)	17.50
20-70	Switch Shaft, KW	9.00	41-79	Side Rod	\$ 2.50	55-28	Coupler, Dummy, Ballast Tamper	2.50
20-71	Washer	.75	41-87	End Rail, High Bar, Stamped (LIM)	8.50	55-32	Plain Wheel (O)	7.00
20-72	Speed Nut, for Shaft	1.00	41-91	Coupler Truck Assy. (O)	18.00	55-69	Pickup Plate Assy. (R)	12.50
20-73	Toggle Spring	2.50	42-10	Railing, White, 2.5" L(O)	3.50	55-150	Wood Tie, Pack of 5 (R)	3.00
20-80	Spring, Push Button, KW	1.00	42-SHA	Strap Headlight Assy., Ni (R)	2.00	55-300	Lamp, Smoking Caboose, 6V (TOS)	2.50
20-93	KW, TW Transf. Cover Screw	.30	42-150B	Bell & Bracket, Large, Ni (R)	5.00	56-COO	Lamp Cover (R)	3.95
20-102	A Knob Assy. (R)	2.50	44-23	Control Panel, printed	1.50	56-FN	Finial Nut, Ni or Br, specify (R)	2.50
20-103	B Knob Assy. (R)	2.50	44-80	Rocket, White w/weight, set of 6 (R)	9.00	56-LSO	Lettering/Number Set, Red (R)	15.00
20-108	Push Button, KW Transf., Chrome	2.00	45-DTT	Dry Transfer for Tool Box, Black (R)	4.00	56-2	Lamp Globe (R)	5.00
20-150	KW Circuit Breaker Replmt. 10A, Encased	7.00	45-WFS	Window Frame Stamping (O)	3.00	56-9R	Railing, Switcher, Long	2.50
21-2	Black Handle, TW	14.95	45-14	Spring, Tension (O)	1.25	56-10	Lamp Brkt. Assy. (O) (SOLD OUT)	4.00
21-4	Cover Screw, Short for TW Transf.	.50	45-49	Metal Chinyer (R)	5.00	56-10R	Railing, Switcher, Short	2.00
21-6	Green, Lamp Cover for TW (O)	6.00						
21-23	Circuit Breaker, TW, 85W (N,O)	15.00						
21-75	Spring Clip (O)	2.00						
21-95	TW Control Handle, Orange, w/Comp.Ring	14.95						
22-11	Whistle Button; LW Orange (O)	1.50						

PART #	DESCRIPTION	PRICE	PART #	DESCRIPTION	PRICE	PART #	DESCRIPTION	PRICE
265E-11	Front Grille (R).....	4.50	385E-36N	Headlite Ring, Ni.....	2.00	430C	Bulb, Clear, 14V Screw Base, Lge. Globe.....	.50
282-9	Brass Worm Wheel (LIM).....	3.00	385E-38	Lucite Lens.....	2.00			
282-14	Bearing Clamp (O).....	2.00	385E-40	Cowcatcher, Red, Steel.....	14.00			
282-16	Thrust Spring (R).....	2.50	385E-49	Boiler Front Casting, Hard Metal (LIM).....	39.95			
282-46	Boom Black (R).....	9.00	385E-86	Frame, Hard Metal.....	150.00			
282-83	Threaded Sleeve.....	1.00	390-31	Side Rod, ea.....	5.00			
289E-4	Pilot Truck Spring, 1668, 88, 89.....	1.50	390-32	Side Rod/Rear Truck Screw (4-36) (6-32).....	2.00	431-300	Bulb, Clear, 12-14V, Lge. Globe, Bayonet.....	.75
289E-10	Drawbar (5 Bends) (1688 Cast Motor).....	3.00	390-32C	Screw, Drawbar for 238E, 1656, 6-32.....	1.00	432C	Bulb, Clear, 18V Screw Base.....	.50
289E-20	Lite Socket Clip, Nickel.....	1.55	390-34	Main Rod Screw, 4-36 for 260, 384, 390.....	1.25	432G	Bulb, Green, 18V Screw Base.....	.75
289E-23	Brush Plate Assy., Closed Hldr. (N,O) (LIM).....	10.00	390-35	Spacer for 260, 384 & 390.....	1.00	432R	Bulb, Red, 18V Screw Base.....	.75
300/400/600	Pickup Assy.....	5.00	390-63	Value Gear Assy. (384, 390).....	3.00	433-R/G	Red/Green, Large Bay 18V Lamp.....	.75
300-A	Axle for 300 Series Truck (R).....	1.50	390-68	Cowcatcher, Cast (R).....	10.00	445-6	Stairs, 2324-6 (LIM SUPPLY) (Brown).....	4.00
300-W	Wheel for 300 Series Truck (R).....	2.50	390-71	Headlite Assy. Prewar.....	9.00	445-7	Green Roof (LIM).....	15.00
300-CC	Combo Coupler, Std. Ga. Pass Car.....	2.50	390-76R	Red Flag.....	2.00	445-12	Chimney (LIM SUPPLY).....	3.25
304-FC	Fiber Lamp Contact, Prewar Headlite.....	2.00	390-76G	Green Flag.....	2.00	445-13	Balcony, Green.....	5.00
309-28	Gateman Crossing Sign w/Post.....	2.75	392T-NP	"LIONEL LINES" Nameplate (R).....	5.00	445-14	Long Window Frame.....	3.00
309-28B	Crossing Sign Base, Metal (O).....	2.00	394-10	Dimple Bulb, Wide Dish (461).....	2.50	445-15	Door, Brown.....	3.00
310-3	Billboard Frame.....	4.00	394-37	Beacon Top Assy., Pin Type (R).....	10.00	445-16	Stair Cover, 2324-16 (LIM).....	5.00
313-F	Adjustable Foot for Bascule Bridge Base.....	1.50				445-18	Window Frame, small.....	1.50
313-12	Stamped Spanner (R) Give Length.....	6.00				445-20	Window Glass.....	1.00
313-28	Crank Arm Assy. w/Cont. (LIM) (O).....	15.00				445-21	Long Window Glass.....	1.00
313-42	Connecting Rod (R).....	18.00				445-22	Window Glass, Door.....	1.00
313-52	Insulation, Center Rail.....	1.50				445-25	Figure, Arms to Side (415-10).....	3.00
313-79	Roof, Bascule Bridge House (R) or (O).....	9.00				445-27	Stair Railing (LIM).....	2.50
313-82	Insulating Pin, O-27 Track, Doz.....	3.00				445-29	Return Spring.....	1.00
313-143	Flex Coupling Spring (O).....	3.00				445-32	Figure Bracket.....	4.50
315-20	Lamp, 14V, AKA 431-300.....	.75	395-3	Number Plate (R).....	2.50	445-35	Plunger (N).....	3.00
317-12	Spanner (R).....	6.00	395-15	Lamp Bracket, (O) (N).....	2.00	445-40	Tow Line, 15" Appx.....	1.00
318-20B	Pantograph, Large, Brass, Std. Gage.....	5.00	395-18	Insulation.....	1.00	445-44	Speed Nut for Chimney.....	.35
318-55	Side Step, Br (R).....	1.50	395-28	Tower Shaft (N).....	2.00	450-13	Signal Cover w/Clip.....	5.25
332-BCD	Baggage Car Doors, w/Handles, Pr. (R).....	19.95	395-29	Insulation, DieCut Fiber.....	1.00	450-50	Block Signal Head, Complete (O).....	25.00
332-H	Handle for Door, Baggage Car, Br.....	1.00	395-30	Terminal Clip.....	1.00	450-54	Double Lamp Socket Casting (R).....	4.50
342-40	Culvert Pipe (R) (LIM).....	.95	395-33	Ladder, Black Stamped, also for 3512 Car.....	3.00	452-W	Lamp, White (AKA 64-15).....	2.50
342-112	Culvert Rivet.....	.30	397-4	Rubber Grommet.....	.75	455-3	Bubble Tube Base, Black.....	3.00
342-129	Drive Line Eyelet (R).....	.95	397-6	Conveyor Belt, Red Rubber (R).....	9.75	455-11	Motor, Pump (R).....	7.00
342-132	Spring, Tension (LIM) (112-231).....	2.00	397-7	Cover Plate.....	2.00	455-13	Oil Drum Rack.....	4.50
345-8	Roof, w/o Chimney (O).....	20.00	397-11	Cam (Orig. Spec.).....	3.75	455-17	Crank, Molded Black (N).....	1.25
345-10	Bridge, Gray Plastic.....	10.00	397-14	Bearing (R).....	4.00	455-19	Counter Weight, Red Plastic (O).....	1.00
345-25	Counter Weight w/Screw.....	12.50	397-16	Idler Roller (R).....	3.00	455-20	Speednut.....	.75
345-65	Culvert Unloader Magnet Assy.....	12.00	397M-16	Brass Coupling Assy.(R).....	3.00	455-21	Outlet Pipe Assy. (O).....	3.00
345-80	Nylon Drive Line, 14", appx.....	1.00	397-23	Spring.....	1.50	455-23	Oil Drum, 5 Per Set (R).....	5.00
347-5	Wood Shells (R), Set of 4.....	2.50	397-24	Separator Pin.....	2.50	455-24	Lamp Cover Assy. (O).....	3.00
350-55	Coupling Strip (N).....	6.00	397-25	Screw, Motor Cover, Knurled.....	2.00	455-30	Oil Drill, Brass.....	2.50
350-60	Adapter Bracket (R).....	4.00	397-29	Flexible Coupling (700E, 773) (R).....	3.00	455-31	Lamp Housing (N,O).....	3.00
350-111	Worm Wheel/Shaft (R).....	15.00	397-30	Screen, Motor Cover (R).....	4.50	455-38	Pumper Chain, Brass.....	2.75
352-5	Arms with Paddle for Ice House Man.....	5.00	397-31	Motor Cover, Blue (R).....	20.00	455-41	Tube Connection (N).....	4.00
352-6	Ice man, w/Arms (R) (LIM).....	12.00	397-32	Decal, GM (R).....	1.50	455-47	Bubble Tube (2848-047).....	7.00
352-9	Loading Chute, w/Cube, MPC (LIM).....	5.00	397-50	Clear Shield w/Eyelets (R).....	3.00	455-52	Nameplate (R).....	2.60
352-11R	Roof, Painted Red (R).....	5.00	397-51	Separator w/Shield & Eyelets, Assy.....	8.75	455-53	Billboard, Printed, "Sunoco" (R).....	3.00
352-11(O)	Roof, Red Molded (O) (LIM).....	20.00	397-77	Cover Clip (R) (LIM).....	3.00	455-57	Beam Pin.....	.50
352-27	Spring.....	1.50	400-A	Axle for 400 Series Wheel.....	1.50	455-58	Chain & Drill Assy., Brass.....	4.75
352-29	Ice Cube (R).....	.75	400-WN	Wheel, 400 Series, Ni.....	2.60	455-64	Coil (N).....	5.00
352-29B	Ice Cub w/Bubble.....	1.25	400-6	Window Strip, Pass. MPC (LIM).....	3.00	455-67	Plunger & Arm Assy. (O).....	4.50
352-39	Terminal Clip.....	1.00	400E-10BR/N	Mach. Stanch. B or N: w/Nut.....	2.50	455-69	Ladder, Black, Stamped, Formed End (O).....	2.00
356-2/4	Poster Set (R), 6 pieces.....	5.00	400-25	Lamp Socket, Center, Budd.....	5.00	455-73	Eyelet for 456 Handrail.....	.25
356-6	Rubber Foot (O).....	.75	400E-36	Handrail Stanchion w/Nut, Br or Ni.....	2.00	455-74	Tension Nut.....	1.00
356-14	Adjusting Screw w/Square Neck (O).....	1.50	400E-80	Valve Gear Assy (385, 392, 400E, 1835).....	4.00	455-75	Cord & Drum Assy. (TOS).....	4.00
356-25/-26	Rubber Foot Pad Set.....	3.50	400E-88	Boiler Front (R).....	50.00	455-76	Binding Post (88-21).....	.75
356-25	Front Pad, 5 Nubs ea.....	1.65	400E-116	Motor Brush Spring, pair.....	1.50	455-92EB	Thermostat (Circuit Board).....	20.00
356-26	Rear Pad, 3 Nubs ea.....	1.65	400E-CS	Crosshead Screw.....	1.00	455-98	Walking Beam Assy. (O).....	5.00
356-28	Blue Figure, w/One Arm Ext.....	2.00	400E-PW	Pilot Wheel, Red Spokes.....	5.95	456-31	Bumper Rivet (R).....	2.25
356-35	Baggage Cart, with Figure (LIM) ea.....	12.00	402-300	Flasher Lamp w/Leads, 12V (N).....	4.00	456-32	Spring, Bumper.....	.75
356-38	Speed Nut Washer.....	2.00	403-6	Coupler Assy. w/Lamp & Lead (R).....	35.00	456-51/52	Handrail Post, RH/LH Pair.....	5.00
356-47	Adjusting Cushion.....	.75	403-8	Front Step, 1656.....	5.00	456-54	Electromagnet (O).....	18.00
356-48	Suspension Spring.....	.50	403-9	Drawbar, 1615, 1656.....	3.10	456-59	Guard Rail Cable, Black & White Spiral, pr.....	3.00
359-33	Side Ladder, 3512 (O).....	4.00	403-12	Female Plug Assy. (O).....	12.00	456-62	Conical Spring (LIMITED).....	.75
362-31	Washer, Insulator.....	.50	408E-FHBR	Falg Holder, Brass.....	3.00	456-64	Handrail Anchor Tack.....	.60
362-48	Tilting Gate (R).....	4.00	408E-HL	Headlite.....	10.00	456-83	Coal Bin Tray w/Door (R).....	24.00
362-73	Figure, Lge. Blue Rubber w/Ptd. Face & Hands(R).....	4.50	408-10N	Steam Pipe Stanchion.....	.75	456-84	Coal Bin Door (R).....	3.00
362-78	Barrel (Set of 6).....	5.00	408-45	Green Lamp (432).....	.75	456-85	Coal Bin Post (R), Pair.....	2.00
362-82	Barrel Loader Track Clip.....	2.00	414-35	"C" Retaining Ring.....	.30	456-88	Rivet, Handrail Stanchion (use 41-69).....	.25
363-300	Bulb, 14V, Bayonet Base Clear (for 455).....	.75	415-35	C-Retaining Ring for 3362 Trigger, ea.....	.50	456-100	Controller.....	50.00
363-301	Bulb, 14V, Bay Base, Red.....	1.00	415-71	Cord Weight.....	.50	456-124	Insul. Washer for Handrail.....	.25
363-302	Bulb, 14V, Bayonet Base, Green.....	1.00	415-76	Tension Spring, AKA445-29.....	1.00	460-SWP	Steering Wh/Forklift W/Post (R).....	3.00
364-23	Guide Block (R).....	4.50	415-WS	Window Set.....	5.00	460-25	Rubber Sleeve for Axle (LIM).....	2.00
364-24	Speed Nut, Round, Use on 132 also.....	.30	415-102	Red Roof (R).....	15.00	460-60	Forklift Operator Blue, Small (R).....	2.00
364-48	Spotting Light Housing, Gray.....	6.50	418-13	Coupler Rivet.....	.50	460-112	Front Wheel Support for Trailer, Metal (R).....	4.00
364C-1	Controller (O) (SOLDOUT).....	20.00	418-21B	Passenger Car Step, Br, Std. Ga. (R).....	3.00	460-114	Spring Clip for Van Dolly (R).....	1.50
375-58	Track Clip (SOLDOUT).....	2.00	418-36 K	Knurled Roof Screw, Prewar Cars, Std. Ga. (R).....	1.00	460-115	Rivet for Spring Clip.....	.35
380-7	Handrail Stanchion, Ni or Br 262, 263 etc.....	.75	418-36 S	Slotted Roof Screw, Prewar Cars, Std. Ga. (R).....	.75	460-121	Rubber Tire, Forklift Truck and Van.....	1.25
380-SS	Side Step, Br.....	1.00	418-46	Triang. Coup. Mtg. Pocket, Ni.....	.75	460-130	Trailer Roof, Green (R).....	4.50
380-W	Ornamental Whistle, Std. Ga, Ni or Br.....	4.00	418-47	Coupler Mounting Pin.....	.50	461-D	Dimple Bulb, Screw Base, w/Cal. Dimp., 14V.....	2.00
380-22	Std. Ga. Eagle, Jour./Spring (R).....	3.00	418T-30	Pilot Truck Spring (700E-33).....	.75	464-12	Overhead Door, White.....	5.00
384-32	Pilot Truck Assy. (R).....	25.00	418T-33	Prewar Collector Assy. (R) (TS-21A).....	10.00	464-15	Crane, Molded (264).....	2.50
385E-20	Drive Rod Screw ea.....	2.50	419-CA	Truck Coll. Assy. 6 pc set.....	8.00	464-21	Dust Collector Red Plastic.....	9.50
385E-29	Boiler Front Latch (R) (4-36x3/8 screw).....	4.00				464-50	White Nylon Cord, Foot.....	.50
385E-35	Headlite Lens.....	2.00				464-150	Timbers for Lumber Mill, 6 pck. (R).....	2.50

PART #	DESCRIPTION	PRICE	PART #	DESCRIPTION	PRICE	PART #	DESCRIPTION	PRICE
465-5	Horn, Ornamental, Yellow (R)	4.00	600-25	Ornamental Horn, End Post Mtg.....	1.00	622-134	Collector Assy., w/Shoe (SOLDOUT).....	28.00
465-6	Antenna Post, Yellow Plastic (R)	2.00	600-36	Collector Assy. (O)	7.50	622-138	Roller, Pickup, Solid, Tapered.....	.75
465-7	Antenna Dish, Yellow Plastic (R).....	2.00	600-38	Coupler Truck Assembly (U)	38.00	622-145	Spring, Col. Arm, RH75
465-10	Panel Board, No Channel (R) (SOLD OUT).....	4.50	600-104	Axle Bushing, Magnetic Axle, Br (R).....	1.00	622-146	Spring, Col. Arm, LH75
465-12	Antenna Assy.	5.95	600-109	Bearing Plate, Nylon (R)	3.00	622-176	Gear Wheel, Mag. (O)	10.00
465-35	Roof Nut (R).....	2.50	600-110	Ball Bearing, 5164.....	.50	622-177	Axle, Stainless	1.80
474-2	Base Plate w/Curve Channel Shoe	15.00	600-111	Steel Drive Gear	3.00	622-178	Gear Wheel w/Swaged Axle (O) (LIM)	10.50
474-5	Sliding Shoe for Brakeman Car	2.50	600-119	Worm Wheel w/Shaft (O) (TOS)	5.00	622-179	Axle, Swaged, Stainless	3.00
474-6	Rivet, Shoe.....	.25	600-125	Armature, Long Shoulder on End	35.00	622-181	Worm Wheel, Br	3.00
479-1	Basic Truck, No Pivot Pin (N).....	12.00	600-129	Thrust Washer, Nylon.....	.50	622-184	Bushing (O).....	2.00
480-4	Armature Assy. for Base Plate, No Tab.....	2.50	600-130	Spring, Motor Truck Mounting, Alco50	622-191	Brush Spring (pair)	1.50
480-5	Bottom Plate	1.50	600-131	Cup washer, Motor Mounting, Alco.....	.75	622-193	Collector Assy.	21.00
480-8	Knuckle, Metal (O).....	.75	600-133	Speed Nut, Motor Mounting, Alco.....	.75	622-216	Arm Bushing	2.50
480-16	Spring, Knuckle (N).....	.30	600-136	Bearing for Plain Axle	1.00	623-10	Geared Wheel w/Plain Mag. Axle (O).....	18.00
480-18	Hoeshoe Washer, Black, Dozen (TS-70).....	3.00	600-138	Coupler T-Bar, Long	1.00	623-13	Gear Wheel & Knurled Axle (O)	18.00
480-19	Rivet, Armature Spring, 10-pack	2.00	600-139	Cast Coupler Head, Full Collar.....	2.25	623-20	Bearing, Mag. Axle (N)	2.00
480-20	Rivet, Shoe, 10-pack, AKA TT-210	2.00	601-6	Frame Skirt (LTIRR)	6.00	623-22	Worm Wheel w/Chamfer f/Mag. Axle.....	3.00
480-25	Base Plate & Coupler, w/out Shoe	12.00	601-40	Seaboard Decal, Pair.....	5.00	624-10	Smokestack, Yellow.....	1.50
480-31	Coupler Assy. (N)	4.00	601-55	Horn & Bracket Assy. (R)	28.00	625-139	Dummy Coupler, Plastic, Full Collar.....	2.00
480-38	Flat Spring, Truck Armature.....	.60	601-60	Insulation, Battery Bracket (O, N)	1.00	625-182	Wabash Geep Dummy Coupler (w/half collar).....	1.95
480-42	Armature, Coupler w/Tab.....	1.70	601-61	Battery Spring, Cu (O)	2.50	627-52	Pilot, 44 Ton Diesel	4.00
480-85	Base Plate, (O)	12.00	601-63	Insulation Rivet	1.00	627-122	Pilot, 2 step, use 530-40.....	3.00
481-6	Collector Assy. Hole on center	4.00	616-CP	Phenolic Insulator for Vestibule (R).....	4.00	629-17	Slotted "O" Ga Roof Screw.....	.50
481-10	Base Plate w/Coupler & Roller (N).....	12.00	616-CV	Slide Collector for Vestibule, Short.....	2.00	636E-5	Grab Rail, Ni or Br, 1.25".....	1.50
	 BASE PLATE COUPLER & ROLLER 481-10		616-GR	Grab Rail for Car, Nickel.....	1.00	636-NP	"L" Name Plate, Silver (R).....	2.00
481-11	Roller, Pickup (R)	1.00	616-HLS	Head Lite Strap w/Socket.....	5.00	636-9	Pivot Post for Motor, Br (R), .193 Neck	3.50
481-12	Pin for Roller Pickup50	616-MMS	Motor Mount Plate, Br	5.00	651-4N	Lumber Car Stake, Prewar "O" Gauge, Ni.....	2.00
482-3	Baseplate w/Roller, No Coupler.....	7.50	616M-14	Collector Assy., Complete (3.5").....	10.00	654-HRB	Brass Hand Rail	5.00
483-2	Conversion Coupler w/Slide Shoe (U,R).....	10.00	616-9	Pivot Post for Motor, .163 Neck (616).....	3.50	671-C	Chassis w/Drivers, Ni Rim (O, U)	70.00
483-7	Eyelet, Shoe Spring (N) (61-14).....	.25	616-13	Bulb for Slope Back Tender (1447).....	1.00	671-K	Penn. Keystone, "6200"	1.00
484-4	Pivot Stud, Ni Plated	2.00	620-2	Searchlite Yoke	11.95	671-LSL	Label, for Smoke, Under Roof.....	1.00
485-10	Coupler Head, for GG-1 Pilot Truck.....	3.00	620-4	Searchlite Lens, Diecut, (820 also)	4.00	671M-1	Motor, Complete, Slant, Tested (U, LIM).....	75.00
485-11	Locking Pin Assy. (O)	3.00	620-7	Handrail, Formed.....	7.00	671M-5	Brushplate Assy., 3 Lugs (N/O).....	19.95
485-16	Pivot Stud.....	.50	620-20	Searchlite Housing (U,O) (SOLDOUT)	39.95	671M-8	Armature (N).....	35.00
485-17	Pivot Washer, Sintered.....	1.00	622-5	Smokestack, Black or Blue, specify	1.50	671M-19	Rear Thrust Washer50
485-20	Armature Plate	1.00	622-7	Lockplate.....	2.60	671M-20	Rear Bearing, Recessed (LIM).....	3.00
485-22	Contact Eyelet, Ni.....	.50	622-8	Horn, Ornamental, Aluminum.....	1.50	671M-21	Ball Bearing, 18 per Motor.....	5.00
485-26	Collector Assy. for Alum. Pass.Car (O) (LIM).....	6.00	622-9	Bell, Ornamental, Black	2.00	671M-22	Retainer Clip (C-Ring), Alt. to TS-7025
485-28	Coupler Head Assy. (O)	3.50		 ORNAMENTAL BELL 622-9		671M-23	Front Thrust Washer50
485-30	Spring Rivet.....	.40	622-10	Radio Wheel	2.00	671-6/-7	Handrail, pr.....	5.00
485-32	Spring, Collector	1.00		 RADIO WHEEL, BLACK 622-10		671-14	Headlite Prism, Early (R)	3.95
486-4	Bottom Frame Assy. (O).....	10.50	622-11	Front Headlite Lens, F-3 Type w/Angle Cut	1.00	671-20	Axle Bushing, Bronze (O).....	1.50
487-1	Coupl. Trck, 2400, w/pick-up (rebuilt)	26.00	622-12	Headlight Lens, Rear	1.00	671-21	Axle, Swaged, for Driver.....	2.00
487-9	Drawbar Assy. w/Coup.....	4.50	622-13/14	Marker Lantern, Clear Plastic, pair	2.00	671-25	Axle, for Driver, Plain or Knurled specify.....	2.00
487-20	Lock Link (O)	1.00	622-17	Rivet, Lockplate (2343-65)25	671-32	Rear Step, Apron, Stamped	3.00
487-21	Lock Link Spring (N)50	622-28	Dowel Pin	1.60	671-33	Cup Washer, Truck.....	2.00
487-22	Spring, Centering (O)50	622-34	Bushing, Magntraction Axle (O).....	1.50	671-58	Name Plate (R)	2.50
487-23	Drawbar Stud, Br (LIM).....	1.25	622-36B	Idler, Brass	3.00	671-61	Smoke Box Chamber (O) (LIM).....	35.00
488-4	Bottom Frame Assy., 2400 Series, Late	6.50	622-36S	Idler, Steel (8010-117S).....	3.00	671-62	Smoke Box Cover Assy. (O, U).....	32.00
490-7	Drawbar Assy. (N)	4.50	622-50	Screw, Pawl Wheel Pivot.....	2.00	671-67	Smoke Lamp Contact	8.00
494-14	Insulating Sleeve, Nylon	2.00	622-51	Axle w/Worm (O)	2.50	671-75	Smoke Lamp (O) (LIM).....	25.00
494-17	Beacon Top, Fits 494-20 Bracket	7.50	622-52	E-Unit Bracket & Bell Bracket.....	2.00	671-81	Smoke Lamp (R)	12.00
494-20	Housing Bracket w/Washer	6.00	622-54	Bell Spacer, Br	1.50	671-84	Truck Center Wheel, No Flange (O).....	1.00
497-10	Rivet.....	.25	622-55	Coup. Drawbar w/Rivet (O).....	2.50	671-85	Axle Retainer	1.25
497-51	Lock Pin, Expld. Box Car, Chute Stud w/Ret.	2.00	622-56	Drawbar Rivet for Coupler, Black	1.25	671-86	Screw, Pivot for 746 Pilot Truck (O).....	1.50
497-63	Roof, Gray	15.00	622-57	Spring, Centering, Coupler.....	.75	671-93	Pilot Truck Assy. (U)	27.00
516-L	Ladder for Std. Ga Hopper	2.00	622-58	Coupler Assy. w/Drawbar (R)	16.00	671-94	Stud, Front Truck, Ni	2.00
500-179	Track Mtg. Rivet, Short.....	.25	622-60	Screw, Truck Mounting	1.00	671-98	Side Rod, Small Holes (O)	4.00
520-NR	Nickle Rinn. Flood	4.00	622-63	Truck Pivot Bracket (O)	3.00	671-99	Screw, Side Rod, Long	1.50
520-NS	Number Set, White Transfers	5.00	622-64	Pivot Bracket, Bell Truck (O).....	4.00	671-101	Flapper Cam	4.00
520-12	Pantograph Spring75	622-65	Collector Assy., Late (N, O) w/Pin.....	25.00	671-102	Flapper Spring (R)	3.00
520-30	Coupler, Non-Operating, Plastic	1.50	622-71	Worm Wheel, for Magntraction Axle.....	4.00	671-104	Collector Terminal (-200).....	3.00
520-31	Rivet, Front Coupler for 52075	622-72	E-Unit Bracket	2.00	671-105	Collector Assy. (AKA 681-4) (O)	15.95
520-35	Pantograph Black Nylon (R)	7.00	622-76	End Rail (R).....	1.50	671-107	Rivet, Roller.....	.50
520-51	Shoulder Screw, Trk. Mtg., 520.....	1.50	622-77	Handrail Support (R)50	671-108	Collector Spring.....	1.00
521-4	Bottom Frame Assy., Reb'lt (U)	12.00	622-79	Side Rail (R)	1.00	671-109	Collector Arm Assy. (LIM) (O).....	5.00
521-8	Alignment Spring	1.00	622-80	Rear Cab Handrail	1.25	671-111	Roller, Pickup, Solid, No Hole (R).....	1.00
521-9	Shoulder Rivet85	622-88	Lamp Lead w/Cont. Wash	1.30	671-112	Insulating Spacer50
526-XLW	Xtra Large Round Globe, White	1.50	622-95	E-Unit Wire Clamp.....	2.00	671-115L	Flapper Shoul. Scr., Long (O)	2.00
530-40	Rivet for Mounting GP Pilot (22-65)30	622-97	Handrail Stanchion, Cotter Key, Short, ea25	671-120S	Flapper Shoulder Scr., Short (O)	2.00
530-44	Rivet for GP End Rail.....	.20	622-114	Brush Plate Assy. (N).....	16.00	671-122	Insulating Washer40
565-26	Rubber Stop, Lock Pin (R).....	.75	622-115	Bearing, Armature	2.50	671-127	Wheel, Truck w/Flange (O).....	1.00
565-45	Lamp Contact Socket (O)	1.50	622-117	Brass Brush Holder (N).....	1.00	671-140	E-Unit Return Spring.....	1.00
566-16	Rivet, Truck Mounting25	622-118	Brush Spring, pair (622-191).....	1.50	671-141	Shouldered Plunger (N).....	5.00
566-18	Rivet for Armature Spring35	622-119	Wick, Brushplate, Oil	1.00	671-151	Conical Spring, Truck.....	.50
566-27	Plastic Knuckle (AKA 566-54)	2.75	622-121	Brush, Slotted (pair).....	1.50	671-158	Nameplate, Printed (R) (LIM).....	4.00
581-10	Collector Carriage Assy. (R).....	7.30	622-125	Santa Fe Logo, Water Decal, Pr. (R)	2.00	671-160	Smoke Unit Cover, Metal.....	4.50
582-3	Pivot Stud, Loug75	622-126	GM Decal Pr.	2.50	671-167	Piston, Smoke (O).....	4.00
600-4	Prewar Truck Retainer Clip50	622-133	Grounding Spring, Conical.....	.50	671-169	Heater, Small.....	5.00
600-11	Platform Railing.....	9.00				671-170	Smoke Unit Comp. w/Str.Brkt, Pill Type.....	36.00
600-15	Truck Clip (R).....	.50				671-180	Worm Wheel, Br (23 teeth).....	4.00
600-16	Step Rivet ea25				671-181	Gasket, for Smoke Unit Cap.....	.50
600-19M	Gold Metal Bell (R).....	2.00				671-182	Smoke Cam (N,O).....	3.00
600-20	Plate.....	1.00				671-183	Dust Cover for Worm Gear (O).....	1.00
600-21	Coupler Retaining Bracket.....	1.75				671-184	Drawbar, Nickel.....	2.00
						671-185	Screw, Truck Pivot, Long/Short, specify	1.00
						671-186	Collector Insulation (R).....	2.00

PART #	DESCRIPTION	PRICE	PART #	DESCRIPTION	PRICE	PART #	DESCRIPTION	PRICE
671-188	Smoke Lever, Tab Up.....	4.00	700E-112	Collector Insulator, Molded (O).....	6.00	711-188	Insulated Washer.....	30
671-196	Boiler Front Assy., Late Model (R).....	17.50	700E-115	Collector Pivot (O).....	1.00	711-207	Rivet for Switch Base.....	50
671-200	Collector Terminal (671-104).....	3.00	700E-116	Spring, Collector (O).....	1.00	711-211	Lamp Bracket & Socket, Screw Base (O).....	3.50
671-201	Pin, Alignment (O).....	.75	700E-118	Bell Frame (O).....	2.00	714-L	Latch, Black Stmp'd.....	2.00
671-202	Rear Trk & Drawbar Assy. (U) (O), specify.....	24.00	700E-121	Power Reverse Rod (R) (LIM).....	3.00	714-6	Catwalk, Small (R).....	9.00
671-209	Four Finger Contact.....	4.50	700E-122	Reach Rod (R) (LIM).....	3.00	714-9A	Truck Axle (O).....	3.00
671-212	Smoke Linning.....	.50	700E-124	Smoke Box Front Handrail.....	2.25	714-16	Drive Pin, Latch, Gateman Arm.....	30
671-214	#3 Lockwasher for Collector Mounting.....	.25	700E-127	Knuckle Pin, Scale Coup (O).....	2.00	714-18	Step, Scale Box Car.....	3.00
671-219	Ballast (O).....	20.00	700E-128	Knuckle Lock Bar.....	1.00	715-F	Flag for 2555 Tank Car, pair.....	2.50
671-223	Lamp Lead w/Insul. Washer.....	3.00	700E-131	Drawbar Pin, Machined (R).....	7.50	715-WL	White Lettering/Logo, Pr. Shell.....	4.00
671-225	Heater Assy., Pill Type, Ceramic, Bench Tstd.....	6.35	700E-145	Coupler Retaining Nut.....	1.50	715-7	Tank Dome, Molded Plastic.....	3.00
			700E-146	Fulcrum Screw, Valve Link.....	2.00	715-10	Ladder, Tank Car, 3 Rung.....	2.00
671-238	Screw, Side Rod w/Ring, Ni, Mach, Short.....	2.00	700E-147	Lead Weight.....	11.95	715-17	Air Brake (O).....	3.95
671-239	Crank Stud, Press In.....	1.50	700E-151	Eccentric Sleeve (O).....	2.00	715-18	Step, Black Tank Car, Set of 4 (R).....	5.00
671-240	Center Wheel w/Stud (O) (LIM).....	8.00	700E-152	Drawbar Chain (R).....	1.00	715-21	Brake Wheel, Metal w/Pin.....	1.00
671-248	Axle Bushing, w/Shoulder (O).....	2.00	700E-157/158	Handrail, pair (O).....	8.00	717-14	Smokestack, Caboose (R).....	1.50
675-8	Steam Chest Casting (R) for 2025 also.....	35.00	700E-159	Coupler Retaining Bolt.....	1.50	717-22	Caboose Marker Light, RH (R).....	2.50
675-9	Smoke Unit Assy ("L" Bracket).....	27.00	700E-161	Headlight Lens (R).....	2.00	717-23	Caboose Marker Light, LH (R).....	2.50
675-13	Smoke Crank.....	2.00	700E-165/166	Rhinestone, Red/Green (specify).....	.50	717-60	Caboose Ladder (R).....	9.00
675-14	Boiler Front Assy. (R) (AKA-32).....	17.00	700E-167	Amber Jewel.....	.50	721-19	Switch Lever (R).....	3.00
675-15	Boiler Front Clip.....	1.50	700E-173	Coupler Pin for Cow Catcher.....	.75	721-38	Spring for Switch Lever.....	.60
675-19	Front Truck Assy.....	8.50	700E-175	Drawbar Chain Ring.....	1.00	726 M-5	Armature (NOS).....	50.00
675-21	Rear Truck Assy., Cast (R).....	24.00	700E-176	Stanchion and Nut, 700E-70.....	1.25	726-9	Worm Shaft Assy.....	20.00
675-22	Drawbar, Engine.....	2.25	700E-177	Feedwater Delivery Pipe (R).....	4.00	726W-14	Stud, Whistle Mtg.....	1.25
675-23	Screw, Trailer Truck, also for 671, Short Shoulder.....	1.00	700E-184	Ball Thrust Washer.....	1.50	726-20	Insulating Plate (R).....	4.50
675-26	Smokestack.....	2.00	700E-185	Hinge Rivet.....	1.00	726-21	Insulating Sleeve.....	.50
675-27	Handrail for Boiler.....	1.50	700E-187	#4 Lock Washer for Collector, Center Sevrated.....	.30	726-24N	Insulator, Nylon, ea.....	.75
675-28	Rivet, Rear Truck.....	.30	700E-188	#6 Lock Washer.....	.20	726-24C	Insulator, Ceramic (O).....	1.50
675-30	Penn. Keystone (R) "5690" Decal/Label.....	1.00	700E-189	Retaining Ring (O).....	.70	726-25	Side Rod, Ni.....	3.00
675-31	Bell, Machined Aluminum, Splined Shaft.....	1.50	700E-194	Reach Rod Screw.....	1.00	726-29	Pinion Gear LIM.....	10.00
675-32	Boiler Front Assy (R).....	17.00	700E-210	Trailer Truck Wheel Set, Spoked (N).....	5.00	726-34	Drive Rod & Crosshead, LH.....	6.00
675-33	Smoke Stack Cleaner Tool (O).....	2.00	700E-218	Combo Lever Assy. (N).....	4.00	726-36	Eccentric Rod Assy., RH.....	8.00
			700E-219	Lubricator Lever Assy. (LIM).....	7.50	726-37	Eccentric Rod Assy., LH.....	8.00
675-50	Armature (N,U,O).....	28.00	700E-227	Coupler Lift Bar Assy. (LIM).....	15.00	726-38	Shoulder Screw, Valve Gear.....	1.00
675-52	Wheel, Rear Truck, Spoke Detail (O).....	1.50	700E-231	Lockbar & Chain Assy.....	2.50	726-39	Spacer, Shouldered, Side Red.....	1.00
681-4	Collector Assy., AKA 671-105 (N).....	14.00	700E-233	Bell, w/Crank Assy., Ni (O).....	4.20	726-42	Drive Rod & Crosshead, RH.....	8.00
681-5	Fiber Cover (O).....	2.00	700E-235	Boiler Front Assy. w/No. Bd. & Railing (R).....	50.00	726-43	Rear Truck Assy. (R) (w/Drawbar).....	29.95
681-11	Bushing, Brass (O).....	2.00	700E-239	Crosshead Assy. (O).....	3.00	726-45	Drawbar.....	5.00
681-12	Rear Bushing, Armature Bearing, sub 671M-20 (O).....	2.00	700E-241	Eccen Crank/Sleeve.....	5.00	726-46	Screw, Trailer Truck.....	1.00
681-15	Roller, w/Hole thru Center.....	1.00	700E-242	Feedwater Pump Bracket (R).....	9.00	726-49	Drive Screw, Crosshead.....	1.00
681-16	Pin, Roller (773).....	1.00	700E-245	Coupler Assy.....	26.00	726-54	Smoke Box Cover Assy. (R).....	35.00
681-18	Axle, Splined, Non Mag.....	4.00	700E-253	Booster Exh. Pipe Assy. LH (N).....	25.00	726-57	Stack Gasket (AKA 671-181).....	.50
681-21	Magnet (O) (SOLD OUT).....	10.00	700E-255	Injector Suction Pipe (700E-108).....	2.00	726-65	Screw, Crosshead, RH (O) (SOLDOUT).....	2.00
681-22	Smoke Lever, down.....	4.00	700E-279	Throt. Rod/Fulcrum Assy. w/Posts (O).....	7.00	726-66	Crosshead, Open (O).....	1.50
681-105	Brush Plate Assembly (N).....	15.00	700E-280	Drawbar Pin & Chain Assy. (R).....	9.00	726-70	Screw, Crosshead (w/Ext, Pin).....	2.50
681-120	Bearing, Bronze (N, O).....	2.00	700E-291	Separator Bottom (R) w/Screw.....	4.00	726-71	Boiler Front Assy., No Clip, Early (R).....	40.00
681-121	Thrust Bearing Assy. (O).....	3.00	700E-308	Scale Knuckle (O).....	2.00	726-75	Crosshead Guide Assy.....	16.00
682-5	Valve Gear Assy. (R) (Luhe Linkage).....	5.00	700E-309	Coupler, Complete (R).....	10.00	726-82	Brass Worm Wheel, 1946 Engine.....	4.00
682-6	Eccentric Crank.....	1.00	700E-312	Worm Shaft Flange Coupling (O).....	9.00	726-84	Flapper Shaft Clamp.....	4.00
682-9	Stud, Hex Head for Valve Gear (O).....	1.00	700E-314	Flexible Coupling (Sub 397-29).....	2.00	726-94	Smoke Stack.....	3.00
682-11	Driver (N) (O) (SOLD OUT).....	12.00	700K-16	Smokebox Front Assy w/Rhinestones (R) (LIM).....	50.00	726-95	Boiler Front Assy. w/clip + 2 Tabs (R).....	50.00
682-13	Side Rod (N,O).....	4.00	700T-K	Knuckle Coupler, O Ga. Dummy (R).....	2.00	726-99	Smoke Lever (O).....	2.00
700E-10	Pilot Truck Wheel.....	7.00	700T-L	Lettering for Tender, NYC, Dry Transfer, pr.....	7.50	726-100	Pushrod, Smoke Unit.....	1.50
700E-11	Cowcatcher (R) w/Holes for Coup. Pins.....	17.00	700T-4	Bearing Cap, ea.....	1.50	726-101	Insulation, Collector.....	2.50
700E-28	Worm Housing Gasket (N,O).....	2.00	700T-5	Coal Pile (R) (LIM) (SOLDOUT).....	10.00	726-104B	Flag Holder, Black, w/Splined Shaft.....	2.00
700E-33	Spring, Front Truck.....	1.50	700T-6	Rear Step, Stamped.....	3.00	726-104N	Flag Holder, Ni, w/Splined Shaft.....	2.00
700E-34	Spring for Trailing Truck (R).....	1.00	700T-7	Ladder Rail.....	4.50	726-105	Crosshead Guide Assy. (N).....	16.00
700E-36	Trailer Truck Pivot Screw (N).....	2.00	700T-8	Corner Rail (R&L) (O) ea.....	1.00	726-109	Handrail, Boiler, Ni.....	1.50
700E-37	Hex Screw Rear.....	2.00	700T-9	Grab Handle, for Front of Tender.....	2.00	726-111	Pilot/Steam Chest (R).....	35.00
700E-39C	Side Rod Screw, w/Ring.....	1.00	700T-12	Handrail RH (O).....	1.25	726-112	Whistle, Ornamental, Press In, Ni (O) (SOLDOUT).....	2.50
700E-42	Drive Rod, RH (SOLD OUT).....	18.00	700T-13	Handrail LH (O).....	1.25	726-116	Smoke Lever (O) (LIM).....	8.50
700E-44C	Screw, Eccentric Crank, Hex Hd.....	1.00	700T-14	Front Step Die Cast ea.....	4.00	726-122	Lamp Lead w/Contact.....	1.00
700E-45C	Side Rod Screw, Hex Hd, Flat.....	1.00	700T-22	Drawbar, Tender Ni, pair (R).....	3.00	726-125	Worm Wheel, Br (25 teeth).....	4.00
700E-46/151	Eccen. Crank Assembly (N, O).....	5.00	700T-22B	Drawbar Spacer (R).....	.50	736-5	Axle, Swaged, Non-Mag.....	2.50
700E-49	Groove Pin.....	2.00	700T-23	Brake Cylinder (R).....	3.50	736-10	"Magntraction" Magnet (N, O) (LIM).....	11.95
700E-53	Eccen.Crank Rivet, Long Shaft w/Shoulder.....	1.00	700T-24	Wheel & Axle Assy. (VERY LIM) (R).....	7.00	736-12	Screw, Side Rod, N.....	.80
700E-54	Valve Gear Hex Head Eccentric Rivet.....	.65	700T-25	Bearing Cap Screw, Hex Head.....	.75	736-21	Drawbar, Long.....	6.00
700E-55	Valve Stem Rivet.....	1.00	700T-26	Truck Pivot Screw, Shoulder, Black.....	1.00	736-22	Hinge Pin, Boiler Front.....	.50
700E-59	Crosshead Screw.....	1.50	700T-34	Coupler Complete, Scale (R).....	8.50	736-24R	Boiler Front Comp. w/clip (R) (1 TAB).....	40.00
700E-65C	Combo Lever & Rad. Rod Screw (O).....	3.00	703-10	Smoke Lamp, 671, 726 (R) (LIM).....	14.00	736-29	Lockwasher for Eccen., Dished.....	.30
700E-66	Valve Stem Cross Head (O).....	4.00	711C-27	Controller Cover (N).....	6.00	736-30	Screw (Eccentric), 4-40 x 5/8 FH Recessed.....	.50
700E-69	Flag Pole, Threaded.....	2.00	711-52/53	Red/Green Lens, specify Color, (Flat) (N).....	.50	736-37	Shoulder Screw, Rear Truck.....	1.50
700E-70	Handrail Stanchion (Use 176 Nut).....	1.00				736-44	Smoke Lever (O) See 726-99.....	5.00
700E-83	Steam Generator.....	3.25	711-54	O-22 Switch Lantern Assy. (R).....	3.00	746-10	Headlite Lens/Marker.....	2.00
700E-84	Booster Coupling (O).....	4.00	711-65	Shoulder Rivet, Drawbar & Switch.....	.75	746-12	Boiler Front w/Lens.....	10.00
700E-85	Whistle, Ornamental w/Nut (O).....	3.50	711-99	Solder Lug.....	.30	746-26	Collector Assy.....	10.00
700E-90	Injector Del. Pipe (N,O).....	4.00	711-100	Binding Post for Switch Motor (R).....	1.00	746-34	Drive Rod & Crosshead, LH.....	5.00
700E-95	Boiler Piping "U" Bolt.....	.75	711-101	Bushing.....	2.00	746-36	Drive Rod & Crosshead, RH.....	5.00
700E-96	Double Pipe Clamp (O).....	1.50	711-111	Stud Lantern Retainer Ring.....	.60	746-42	Eccentric Rod Assy.....	8.00
700E-99	Booster Pipe.....	15.00	711-113	Lock Hinge (O).....	1.50	752-C	Slide Shoe for Vestibule, 3 1/2" L.....	3.00
700E-103	Feedwater Pipe.....	3.00	711-121	Locking Spring.....	.50	752-PP	Pivot Post for Motor, .288 Neck.....	3.50
700E-107	Pipe Clamp (R) w/Screw, 3-48 x 1/8 RH.....	1.00	711-127	Coil (O) (SOLD OUT).....	5.00	752-SS	Slide Shoe Assy. Motor (R).....	15.00
700E-108	Injector Suction Pipe (700E-225).....	2.00	711-129	Terminal Plate, Assy. (N) MPC.....	4.50	752T-12	Wheel, 263 Pilot Truck, 752 Vest. (R).....	5.00
700E-111	Insulator Insert Brass (O).....	4.00	711-151	Fixed Voltage Plug (R).....	2.50			

PART #	DESCRIPTION	PRICE	PART #	DESCRIPTION	PRICE	PART #	DESCRIPTION	PRICE
752T-26	Vestibule Kit (R).....	55.00	1033-48	Solder Lug (O).....	.50	1664E-6	Side Rod, 2 Side Indent, Plate Mtr., 2 Tabs.....	6.50
752-8	Drawbar.....	5.00	1033-62	Screw, Cover, 8 x 5/8 OHST Rec.....	.25	1664E-8	Side Rod Spacer, Large.....	.60
752-9	Screw Base Lamp (1447-C).....	1.00	1033-86	Speed Nut for Selenium Rectifier.....	.55	1664E-9	Small Side Rod Spacer.....	.50
752-13	Motor Mounting Screw.....	2.00	1033-98	Centering Spring.....	1.75	1664E-10/11	Main Rod & Cross Head Assy., pair (R).....	14.00
752-15	Headlite Lens for 636, 1688 (R).....	1.00	1033-99	Retaining Sleeve.....	1.50	1664E-16	Plain Hub Wheel (U,O).....	8.00
752-16B	Grab Rail, Br 7/8".....	1.50	1033-101	Drive Stud (O).....	.65	1664E-17	Flanged Driver, Non Geared (O).....	10.00
752M-31	Collector Assembly (R).....	15.00	1033-108	Retaining Sleeve (-99).....	1.50	1664E-21	Intermediate Gear, Lionel Jr. #1700.....	5.00
752-42	Vestibule Connector.....	3.00	1041-13	Rectifier Disc (R).....	5.00	1664E-23/24	Valve Gear Assy., Pr.....	16.00
752M-49	Axle, New, for Drivers (O).....	2.00	1041-55	Solder Lug (O).....	.75	1664E-31	Driver (LIM, O).....	10.00
752M-50/51	Driver Set (R) or (N,R).....	32.00	1043-32	Circuit Breaker (O).....	9.95	1664E-32	Driver w/Axle (O).....	12.00
752M-56	Motor Brush Plate (N) .125.....	20.00	1044-24	Control Shaft, Hard Metal (R).....	6.95	1664E-33	Rear Truck Assy., Cast (R)224,1664 w/Bar,1666.....	28.00
763E-216/217	Eccen. Rod Assy., L&R (N,O) pr. (LIM).....	28.00	1044-28	Whist. Cont. Shaft, Angled, Hd. (R).....	5.00	1664-39	Motor Mtg. Screw.....	1.50
763E-BF	Boiler Fuact Assy., Black (O).....	150.00	1044-31	Control Handle (O) (LIM).....	10.00	1666-NB	Number Board (R) pair.....	3.00
771C-6	Terminal Clip (O), 252 Gate (530-40 Rivet).....	.60	1044-61	Whistle Cont. Shaft, Angle (O).....	7.00	1666E-VG	Valve Gear Assy w/Die Cast Crank, pair.....	16.00
771-11	"T" Bolt.....	2.00	1045-4	Arm Assy. w/Flag (O) (LIM).....	10.00	1666E-VGS	Valve Gear Assy w/Stamped Crank, pair.....	16.00
773-AHS	Allen Head Cap Screw, Motor, Mounting.....	.75	1047-7	Red Flag, Switchman.....	.75	1666E-2	Whistle, Ornamental.....	1.00
773-16	Worm Wheel (O).....	4.00	1055-56	Spring, Motor Mounting (600-130).....	5.00	1666E-3	Steam Chest, Casting (R).....	27.50
773-24	Crank Pin.....	1.00	1055-136	Brush, Motor, pair, Texas Special.....	1.55	1666E-6	Journal Clip, pair.....	1.50
773-40	Steam Chest Assy. w/Valve Stem.....	75.00	1110-8	Side Rod, Ni (R).....	3.00	1666E-9	Side Rod (1668E-9).....	2.75
773-43	Guide Support.....	3.00	1120-10	Rivet.....	.30	1666E-10	Nickel Handrail Stock, 041" Rod, pair.....	2.00
773-45	Screw, Side Rod.....	2.00	1120-11	Front Truck Conical Spring.....	.75	1666E-11	Stanchion for Handrail, Ni Plated Pin.....	.50
773-48	Screw, Crosshead.....	2.00	1120-13	Motor Pin, Ni, Threaded End.....	.75	1666E-13	Steam Chest.....	24.00
773-51	Crosshead Assy., LH.....	3.50	1120-20	Rear Truck Assy. (O).....	6.50	1666E-14	Shoulder Rivet, Pilot Truck.....	.75
773-57	Roller Pickup Assy., Solid Roller (O).....	14.00	1121C-55	Lens, Red (R).....	.75	1666E-15	Valve Gear Screw.....	1.00
773-65	Pilot Truck Assy. (O).....	25.00	1121C-56	Lens, Green (R).....	.75	1666E-16	Drive Rod, w/Indent, RH or LH, specify, Ea.....	4.00
773-65SW	Pilot Truck for 1-700E (O).....	24.00	1121-106	Square Rivet (O).....	1.00	1666E-16A	Drive Rod Assembly, Lor Rw/Indent.....	6.00
773-69	Trailer Truck Spring.....	1.50	1122-16	Swivel Rail, RH.....	.75	1666E-20	Headlite Lens (O).....	.75
773-70	Link, Front Truck (O).....	3.50	1122-18	Swivel Rail, LH.....	.75	1666E-22	Drawbar, Prewar (R).....	2.00
773-72	Pivot Screw.....	2.00	1122-23	Washer, Flat Steel, #4.....	.25	1666E-29/30	Cast Eccen. Crank Assy, R+L, pr.....	12.00
773-73	Washer, Pilot Truck.....	.75	1122-177	Switch Lantern Assy. for O-27 Switch (R).....	2.25	1666E-83	Crosshead Guide, Ni (225E) (238E-3).....	2.00
773-74	Link Screw.....	2.00	1130-11	Front Truck Rivet, AKA 1120-10.....	.50	1666E-84	Groove Pin.....	1.25
773-75	Cow Catcher (8606-504).....	17.00	1130-20	Rear Truck Assembly (O).....	7.50	1666E-86	Drawbar, Engine, Postwar.....	3.00
773-79	Bearing Cap Pin.....	2.00	1214-54	Rivet, Coll. Mtg. Brk't. (480-19).....	.25	1666E-87	Pilot Truck & Lamp Bracket Assy. (R).....	18.00
773-81	Rear Truck Assy. (LIM) (SOLDOUT).....	57.00	1402C	Bulb, 14V, Clear, Midget Screw (2420/6420).....	2.00	1666T-DT	"Lionel Lines", Dry Transfer.....	3.00
773-85	Ash Pan (O).....	10.00	1402R	Bulb, 14V, Red, Midget Screw.....	1.50	1666T-5	Rear Deck Handrail, Ni, Tender.....	2.00
773-86	Stud, Trailer Truck.....	2.00	1442W	Bulb, Teardrop, White Screw.....	2.50	1668E-1	Valve Gear Assembly.....	8.00
773-87	Drawbar, Engine (O).....	3.00	1445G/R	Bulb, Green/Red, Specify, Bayonet, 18V.....	.75	1668E-9	Side Rod, No Indent, 3 Holes, ea.....	2.50
773-90	Smoke Lever.....	4.00	1445-300	Bulb, Clear Bayonet, 18V (U.S.-made @ 1.00 ea.).....	.75	1668E-18	1st Inter. Gear Assy.....	8.00
773-135	Roller.....	.90	1447-300	Bulb, Clear Screw, 18V.....	.75	1668E-20	Contact Shoe Assy., 221/1666 (3.75").....	8.00
773-300	E-Unit, No Lever (N, O) (SOLDOUT).....	42.00	1447-301	Bulb, Red Screw, 18V.....	.75	1668E-21	Armature Bearing Plate (U,O).....	2.00
773-X	Engine Relettering Set, White or Silver, specify.....	2.00	1447-302	Bulb, Green Screw, 18V (U.S.-made @ 1.00 ea.).....	.75	1668E-24	Shoulder Screw, Truck Mounting.....	2.00
782-FC	Front Casting, Hard Metal (R).....	30.00	1449-300	Bulb, Clear Screw, 14V.....	.75	1668E-43	Pinion Gear, Armature (2036-127).....	3.00
800-BWN	Brakewheel, "O" Gauge, Ni (R).....	1.50	1449-301	Bulb, Red Screw, 14V.....	1.00	1668E-45	Valve Gear Assy. (R).....	7.50
804-15	Small Dome, Tank Car, Ni or Br.....	2.00	1449-302	Bulb, Green Screw, 14V.....	1.00	1679-D	Door, Stamped (R).....	4.00
810-BP	Block, Pulley & Hook, Std. Ga. (R).....	5.00	1550-8	Eyelet, Floodlight Yoke, Prewar Trucks.....	.25	1681E-MR	Lionel Jr. Main Rod, 1689, etc.....	3.00
810-K	Knob, Dished w/screw (R).....	5.00	1615-MR	Marker Repair Castings, L&R, w/Red Jewels, pr.....	4.00	1681E-6	Brush Holder Assy. (U,O).....	12.00
810-6	Worm Gear (R).....	5.00	1615-1656	Boiler Casting (O) (LIM).....	120.00	1681-25	Headlite Casting (R).....	4.00
810-10B	Motor Brush, Long, Slot pr.....	4.00	1615-10	Crosshead Guide (O).....	2.75	1681E-26	Coll. Shoe Assy, 1664, 1688, 1689, 1700 (3.25").....	13.95
810-19	Boom Drum & Gear, Cast (R).....	7.50	1615-14	Front Step/Coupler Bracket.....	5.95	1684-4	Rear Bracket (R).....	4.00
810-20	Shaft & Sectional Gear, One Pc., Cast (R).....	8.00	1615-20	Drawbar Ground (O).....	1.50	1684-7	Ornamental Bell, Ni (N).....	3.00
811-BW	Stanchion/Brake Wheel, Ni.....	3.75	1615-22	Drawbar Screw, Ni.....	1.25	1684-12	Front Truck Assy., Small Wheel.....	10.00
811-NBWS	Nickel Brakewheel Stand, O Ga.....	3.00	1615-51	Drawbar, Tender (O).....	2.95	1684-20/21	Side Rod, RH/LH (pair).....	4.50
811-LGS	Lumber Car Stake, Br or Ni, each.....	2.50	1615-54	Coupler Assy., Full Collar for Small Pin (O).....	4.00	1684-22	Side Rod Shoulder Screw, Short, Ni.....	1.25
812-NPB	No. Plate/Nameplate, Brass (R), set.....	6.00	1615-62	Rivet, Ni (LIM).....	.30	1684-23	Main Rod /Crosshead Assy (Short), RH (R).....	7.00
814-4	Ladder, Box Car, 6 Rung Br or Ni (R).....	2.00	1615-63	Lamp Bracket Assy. (O).....	4.50	1684-24	Main Rod /Crosshead Assy (Short), LH (R).....	7.00
815-HRN	Hand Rail, Preformed Ni Rod, pair (R).....	6.00	1615-66	Drawbar.....	3.00	1684-26	Long Side Rod Screw, 726.....	1.25
816-BW	Brakewhl/Hop.Side, Br/Ni 5/8" L.....	1.50	1615-84	Drive Rod (Long)/Crosshead Assy., RH.....	7.00	1688E-6	Wheel, Pilot Truck for 224E.....	1.00
816-3	Lad/Sm "O" PreWar Cars, 5 Rung, Ni or Br.....	2.50	1615-85	Drive Rod (Long)/Crosshead Assy., LH.....	7.00	1688E-32	Drive Rod.....	2.50
831-NS	Nickel Flat Car Stakes, Prewar "O" Ga Cars.....	1.50	1615-87	Valve Gear Assy., RH.....	7.50	1688E-35	Drawbar, Engine (R).....	2.00
902-13N	Brake Wheel w/Shaft, Nickel.....	3.00	1615-88	Valve Gear Assy., LH.....	7.50	1688E-36	Shoulder Screw for 1654 Rear Truck.....	2.00
902-13B	Brake Wheel w/Shaft, Brass.....	3.00	1615-93	Spring, Coupler Centering.....	.30	1688E-39	Pilot Truck Assy. (R).....	7.50
1001-18	Side Rod, RH or LH, Ea.....	2.50	1654-2	Drawbar, Ni for Engine.....	2.50	1688T-3	Tender Drawbar, Ni (R).....	3.00
1001-19	Screw, Side Rod.....	1.00	1655M-5	Inter. Gear, aka 1655M-7 (U).....	6.00	1689E-DS	Driver Set (R).....	50.00
1001-21	Crosshead, Scout (O).....	1.50	1656-MK	Marker Repair Castings, w/Red Jewels, L & R (R).....	4.00	1689E-14	Axle Bushing (N, O) LIM.....	2.00
1001M-6	Pick-up Roller, Tube (O).....	.60				1689E-24	Rear Truck Assy. (R) (1668,1688).....	9.95
1001M-19	Scout Lever, Reverse.....	3.00				1689E-26	Pilot Truck Assembly (R).....	10.00
1001M-28	Pinion, Armature.....	2.00				1689E-27	Axle, Driver, AKA 226E-95, 1666/2026 (.120).....	2.00
1001M-33	Gear, Cluster (N,O).....	2.00				1690-5	Door Grabrail Stamping, 3/4", Br or Ni.....	1.75
1001M-34	Gear, Spur.....	2.00				1695-22	GP Pilot Rivet (22-65).....	.30
1001M-46/47	Motor Brush w/Spring for Scout, pr. (N).....	3.50				1776-13	5 Chime Horn, Ornam., Plastic/Silver (O).....	2.00
1002-5	Truck Mounting Eyelet (O).....	.30				1776-016	Windshield.....	2.00
1002-6	Truck Mount Clip, Black, .145".....	.75				1835-SC	Steam Chest.....	49.95
1011-24	Transf. Handle, KW, Red w/Ring.....	3.25				1835-SD	Steam Driver Set, Lg. Hole.....	29.95
1011-100	Compression Ring for 1033 Handle.....	.50				1862-4	Stud, Truck Pivot.....	1.00
1013-17	O-27 Track Pins, Steel (Dozen).....	3.00				1862-9	Spring.....	.50
1015-5N	Steam Dome, Ni, for 259 (R) (LIM).....	5.00				1862-17	Drive Rod, LH or RH each.....	.75
1015-6N	Smoke Stack, Ni, 259 (R).....	4.50				1862-19	Worm Wheel.....	6.00
1015-17	Bell, Ni for 259 etc. (O).....	3.50				1862-28	Eyelet.....	.50
1022-29	Switch Indicator, Red Plastic.....	3.00				1862-37	Rear Axle Bushing (N).....	1.50
1024-N	Diesel Horn Wire Insulation.....	1.00				1862-40	Headlite, Lantern (R).....	3.95
1033-B	Black Transf. Handle (R).....	3.25				1862-41	Steam Dome (AKA 1862-92).....	2.00
1033-4	Case (O) (LIM).....	15.00				1862-42	Whistle, Ornamental, General.....	1.00
1033-17X	Circuit Breaker, 1033 etc.....	7.00				1862-67	Handrail, Formed Wire.....	2.00
1033-20	Binding Post, Ni.....	1.25				1862-92	Steam Dome.....	2.00
1033-25	Nameplate, Control Panel (R).....	4.50				1862-95	Bell, Gold w/Stanch.....	2.00
1033-40	Voltage Cont. Shaft (O) (LIM).....	7.00				1862-96	Sand Dome, Gold.....	2.00
1033-42	Whistle Cont. Shaft, Assy. 90" (O).....	10.00				1862-97	Roller, Pickup.....	.75
1033-47	Binding Post Nut (R).....	.50				1862-113	Long Shoulder Screw.....	2.00



PART #	DESCRIPTION	PRICE	PART #	DESCRIPTION	PRICE	PART #	DESCRIPTION	PRICE
1862-114	Short Shoulder Screw	2.00	2029-16	Smoke Unit Cover, Molded	1.25	2065-16	Lens (Marker Lites), Clear	.75
1865-4	Ventilator for Oldtime Coach	.75	2031-ND	Nose Decal, Rock Island	3.00	2126-23	Tool Box Cover	.75
1865-8	Truss Rod, Ni	2.00	2032-END	Erie Nose Decal, ea	2.75	2126-51	Impeller (LIM)	2.00
1865-10	Brakewheel for "General" Passenger Car	.50	2032-ESD	Erie Side Decals, pr	3.00	2129-39	Finial	.75
1872-19	Brass Worm Wheel	2.00	2034-7	Rear Truck Assy. (1130-7)	10.00	2145-91	Spring, Lamp Contact (O)	.50
1872-28	Rear Boiler Band	2.00	2034-9	Light Socket Assy. (O)	4.00	2145-290	Sign Base	1.00
1872-29	Front Boiler Band	2.00	2034-108	Armature, Bearing Plate, Assy. (O)	10.00	2151-35	Screw	.25
1872-30	Center Boiler Band	2.00	2034-126	Collector Plate	12.00	2170-6	Socket	.50
1872-40	Lantern, Black or Red, specify	2.00	2034-140	Short E Unit Lever (N)	1.50	2203-DB	Drawbar for Tender, Twist Tab	2.00
1872-42	Steam Pipe, Black Plastic (N)	.75	2035-6	Eccentric Crank Screw, Phillips Head (R)	.50	2203B-7	Jack Plug/Lead for Slope Back Tender	4.50
1872-46	Sand Dome w/Stanchions (O)	2.00	2035-12	Eccentric Crank, Half Moon (O)	2.50	2224T-4	Handrail, Top Rear Deck	2.00
1872-49	Valve Stem, Black Nylon (N)	.75	2035-14	Trailing Truck Assy., Square Tab	10.50	2224T-5	Coal Pile (O) (LIM)	20.00
1872-63	Smokestack Cover	2.50	2035-106	Shoulder Screw for Magne-Traction Engines	1.00	2226T-6/7	Corner Rail, LH/RH, pair (O)	4.00
1872-66	Piston, Air Plunger (N,O)	2.00	2035-118	Axle, Non-Mag (O)	2.00	2226T-30	Two Rib Box Coup. Assy. w/ Drawbar (N)	5.50
1877-4	Wire Brace	1.25	2035-119	Compound Gear, Cluster	8.00	2227T-BA	Bell Assy. (O)	55.00
1877-5	Fence, Long Brown	2.00	2035-128	Gear, Intermediate, 2nd (R)	8.00	2227T-12	Rear Step, Tender (6403T ot B)	3.00
1877-6	Fence, Short Brown (R)	1.00	2035-132	Brush Plate Assy., Open Holder, 675/2046	14.00	2227T-16	Lens, Lamp Housing, Angle Cut	1.50
1877-6S	Fence, Horse Car, 10-Piece Set, Brown (R)	8.00	2035-140	Roller, Pickup (R)	1.00	2227T-36	Jack Plug w/Lead (R) (AKA 2203B-7)	4.50
1877-10W	Horse, White (R)	3.00	2035-142	Roller Arm Assy. (LIM)	4.50	2227T-37	Grommet, Rubber	.50
1877-11BLA	Horse, Black (R)	3.00	2035-143	Brass Gear, Non Mag (R)	7.00	2240-N	Wabash Nose Herald (R)	2.00
1877-12BRO	Horse, Brown (R)	3.00	2035-175	Center Wheel, Geared, 2 Pin (O)	14.00	2243-NB	Number Board, pair (R)	3.00
1877-YFS	Yellow Fence Set	9.00	2035-184	Smoke Lever/Piston Assy.	13.50	2243-90	Coupler, Fixed Knuckle (O)	2.00
2020M-9	Solder Lug	.30	2035-186	Pinion Gear (2036-127)	3.95	2243-91	Coupler Pocket	1.75
2020M-17	Bearing, Front (O)	2.00	2036-10	Rear Truck Assy., 4-Wheel w/Rounded Tab	8.50	2243-169	Truck Stud	.50
2020M-30	Brush Plate, 5 Solder Lugs (O)	26.00	2036-15	Drawbar, Engine	3.50	2243-190	Centering Spring for Coupler	.50
2020M-33	Brush, Motor (pair)	1.50	2036-18	Shoulder Screw, Hex Head	1.00	2260-20	Screw Head, Hex	.25
2020M-34	Spring for Brush (pair)	1.00	2036-22	Truck Mounting Screw	1.00	2290-10	Center Rail Contact	.25
2020M-36	Banana Plug w/Lead (2227T-30)	5.00	2036-110	Armature Bearing Plate, Sintered (N, O)	3.00	2290R	Bulb - Red, Midget Screw	1.00
2020-106	Brass Worm Wheel	2.00	2036-112	Shoe Plate Assy. w/Rollers (LIM)	12.00	2301-13	Door	1.25
2023-6	Body Lock Plate, Front	2.00	2036-121	Armature w/Pinion (O) (Sold Out)	30.00	2302-25	Crane Boom	3.00
2023-7	Lock Plate, Rear	2.00	2036-122	Roller Pick-up Assy.	3.00	2302-41	Traction Wire, Gantry Crane	.35
2023-10	Number Board, RH (R)	1.50	2036-123	Roller Bracket	1.00	2305-042	Sleeve for 455 Bubble Tube (N)	2.00
2023-11	Number Board, LH (R)	1.50	2036-124	Pin, Roller, Ni Plated	.40	2305-43	Spool & Cord	2.50
2023-12	UP Nose Decor, pair (R)	4.00	2036-125	Roller	.75	2305-45	Circuit Board (LIM) (455), No Return	25.00
2023-22	Collector Assy. (AKA 622-65)	24.00	2036-127	Pinion Gear, (1668E-43) (LIM)	3.00	2307-530	Blinking Lamp	3.00
2023-26	Coupler w/Drawbar (O) (LIM)	6.00	2036-139	Axle, Non-magnetic (O)	2.00	2312-9	Min. Lamp, Clear w/Leads, 12+4V	1.00
2023-28	Battery Plate Assy.	8.50	2036-150	Brush Plate Assy, Open Holder Late, 2026 (O)	14.00	2312-17	Green Lens	.50
2023-29	Dummy Coupler (-99)	1.30	2036-157	Brush Spring (pair)	1.50	2312-18	Signal Flag	1.25
2023-34	Horn, Complete, Tested (R)	17.00	2046-TBS	Tender Body Screw, 6 x 3/16 RHST	.25	2313-300	Bulb, 6V Clear, Globe, w/Top Base	1.50
2023-36	Bracket, Horn Relay	7.00	2046-13	Boiler Front Assy. (R)	30.00	2314-021	Yoke, Searchlight, Black, LTI (LIM)	1.50
2023-37	Relay Insulation	1.60	2046-17	Smoke Unit	29.95	2314-19	Reflector	.75
2023-38	Battery Retainer Plate w/Clip	8.00	2046-20	Crosshead Guide Bracket	5.00	2314-300	Lamp, 14V Clear	.75
2023-41	Collector Arm & Roller Assy.	5.50	2046-22	Front Truck Assy. (O)	14.95	2314-301	Red Lamp Min Screw Base	1.00
2023-43	Roller, Pickup (R)	1.00	2046-27	Conical Spring, Front Truck	1.00	2314-320	Lamp Socket, Min.	1.50
2023-43S	Roller, Pickup, Sintered (O) (LIM)	2.00	2046-28	Screw, Front Truck	.75	2315-400	Controller, Coal Loader (N)	49.95
2023-44	Pin for Roller	.50	2046-29	Drive Stud	1.00	2316-55	Nylon Gear, Keyed (O)	2.00
2023-58	Steps, Rear	2.50	2046-30	Reverse Unit Bracket	1.50	2317-20NG	Nylon Gear, Lift Bridge (R)	6.00
2023-59	Truck Ladder (O)	2.95	2046-35	Drive Rod	1.50	2320-5	Flag, Rope & Pennant	4.00
2023-70	Wheel, Disk Back (O)	5.00	2046-43	Smoke Pump Lever & Piston Assy.	9.00	2321-HRS	Hand Rail Set	40.00
2023-80	Perm. Mag. for 2330 Truck, GG-1 (N)	10.00	2046-44	Ash Pan w/Stud (O)	3.00	2321-10	Headlite Lens/Marker	2.00
2023-81	Running Light, Red Lens	.75	2046-45	Drawbar, Engine (O)	2.00	2321-12	Horn, Ornamental	1.25
2023-82	Window Shell (R)	2.50	2046-47	Smoke Piston Rod	.50	2321-24	3 Stanchion & Bracket	5.00
2023-115	Pickup Insulator	2.25	2046-48	Spring, Smoke Piston	.75	2321-27	Single Stanchion w/Bracket	3.00
2023-117	Brass Idler Gear (AKA 8010-117B)	3.00	2046-55	Tender Drawbar	2.75	2321-30	End Rail Assy. (R)	6.00
2025-14	Boiler Front Assy., "2025" Printed (R)	20.00	2046-60	Smoke Unit Crank Assy.	3.50	2321-36/-37	Long Handrail	7.00
2025-111	Axle, Driver	1.50	2046-62	Valve Gear Pin, Aluminum	1.25	2321-38/-39	Short Handrail	6.00
2025-N	Engine Relettering Set, pair	2.50	2046-63	Eccentric Rod Assy., RH	8.00	2321-47	Lamp Socket Assy.	3.75
2026-DRA	Drive Rod/X Head Assy., R & L, pair	12.00	2046-64	Eccentric Rod Assy., LH	8.00	2321-49	Lamp Bracket, MPC	2.00
2026M-4	Collector Shoe Assy., Complete (3.75" L)	10.00	2046-65	Drive Rod w/Crosshead, Assy., RH, Ni, (R)	5.00	2321-50	Bracket, Battery (R)	7.50
2026-8	Smoke Unit, Reconditioned (LIM)	26.00	2046-67	Smoke Lever/Piston Assy. (O)	15.95	2321-52	Horn Relay Insulation	.75
2026M-8	Driver (1666M-6)	12.00	2046-69	Rear Truck Assy. (R)	20.00	2321-61	3-Cond. Motor Cable, 8" Approx	1.00
2026-14	Pin, Motor Mounting	1.50	2046-70	Ash Pan Assy. (N)	7.00	2321-65	Pilot, Die Cast (O)	9.50
2026M-14	Brush Plate Assy., Closed Tube (N) (O)	10.00	2046-71	Drive Rod Assy. LH (R)	5.00	2321-76	Idler Gear (O)	4.00
2026-16	Steam Chest, Early, No Tabs (LIM)	30.00	2046-87	Rear Truck Assy w/Plastic Sides (O)	16.00	2321-80	Axle	.75
2026-16L	Steam Chest, Late (R) (LIM)	30.00	2046-88	Ash Pan Plate (O)	2.00	2321-86	Coupler Assy., Step Collar (O)	4.00
2026-17	Truck Plate Assy.	6.50	2046-120	Tubular Rivet	.25	2321-103	FM Bearing, Armature (O)	2.50
2026-24	Cast Rear Truck w/Drawbar, Assy.	20.00	2055-10	Handrail Stock, Ni, 12"	1.00	2321-109	Armature (O) (SOLDOUT)	32.00
2026-28	Cross Head Guide, Nickel	1.50	2055-20	Crosshead Guides & Bracket, Assy (O)	20.00	2321-132	Pick-up Assy. (O)	5.00
2026-29	Heater Element	6.35	2055-24/25	XHd Guide (O)	2.00	2321-135	Coil Spring, Pick-up	.50
2026-40/-41	Eccen. Rod Assy., w/Stp'd. Crank, R/L,pr.	14.00	2055-32	Eccentric Crank, Short	2.00	2321-136	Collector Rivet	.50
2026-44	Smoke Unit Pump Spring	.75	2055-37	Screw, Valve Gear	1.00	2321-137	Insulator for Pick-up	.75
2026-45	Side Rod Screw	1.00	2055-43	Truck Side (O) (LIM)	4.50	2321-138	Collector Spring, ea	.75
2026-46	Center Wheel Screw (1949) Ni, Hexhd	.75	2055-46	Spring, "Rear Truck" (R)	.65	2321-143/144	Truck Side, Right/Left, specify	4.00
2026-50	Smoke Pump Piston w/Hole (O)	4.25	2055-47	Brass Eyelet for Rear Truck (SE-63)	.50	2321-146	Heat Reflector	1.00
2026-53	Wire w/Contact Washer for Lamp	1.00	2055-47S	Spacer, Thin	.50	2321-149	Pivot Plunger, Metal	2.00
2026-54	Steam Chest w/Tab (LIM) (R)	30.00	2055-55	Truck Bracket w/Stud, Rear (O)	5.00	2321-156	Coupler Armature Assy., Small Pin	4.00
2026-68	Smoke Lev. /Pist. Assy. w/Tri. Stmp'g.	12.00	2055-61	Drawbar	2.50	2321-162	Centering Spring	.50
2026-108	End Wheel, Geared (O)	10.00	2055-65	Drive Rod & Crosshead Assy., RH (R)	4.00	2321-164	Coupler Pivot Shaft, T-Bar, Nylon	.75
2026-109	Axle	2.00	2055-66	Crosshead, Long Stem (O)	2.00	2321-168	Coupler Armature Assembly	4.00
2026-110	Cluster Gear	8.00	2055-67	Spacer, Side Red	.50	2323-21	Electromagnet for 356 (N)	12.50
2026-120	Armature Washer (AKA 97M-15)	.50	2055-70	Drive Rod & Crosshead Assy., LH (R)	4.00	2324-012	Chimney (445-12)	2.00
2026-121	Gear	2.60	2055-73	Smoke Unit w/Lamp Socket/Bracket (O or MPC)	28.00	2324-014	Window, Long Brown	2.00
2026-122	Axle, Driver (.150) (O), (LIM)	1.50	2055-77	Smoke Pump Lever & Piston Assy.	12.00	2324-016	Stair Cover, Brown (MPC/LTI)	3.00
2028-DT	GP Penn. Dry Transfer	28.00	2055-92	Pin (AKA 2046-29)	1.00			
2028-71	Truck Side Black	8.00	2055-93	Eccentric Crank Screw	.50			
2028-85	Top Plate Assy. (O) (LIM)	39.95	2056-30	Stud, Rear Truck (LTI Rerun)	1.75	2328-DB	Dynamic Brake for GP (2369-12)	15.00
2029-15	1-1/4" Sleeve for Liquid Smoke Unit	.25	2065-13	Boiler Front Assy., Tank Type	27.00			

PART #	DESCRIPTION	PRICE	PART #	DESCRIPTION	PRICE	PART #	DESCRIPTION	PRICE
2460-20	Crane Support Wire, Guy Wire	1.50	3357-3	Bridge Side (O)	4.00	3444-32	Cop Figure (N) (LIM)	3.00
2460-21	Drive Pin, Crane Boom50	3357-4	Bridge Top (O) (TOS)	3.00	3449-23	Winding Spring	1.50
2460-30	Traction Wire (Lock Spring)	1.40	3357-5	Bridge Rod (O) (LIM)	3.25	3451-5	Brakestand, w/Brakewheel & Stud	3.00
2460-37	Retaining Washer, Large Horseshoe	1.50	3357-7	Spring, Platform (LIM)75	3451-18	Cam (O)	1.00
2460-42	Pulley Support (TOS)	1.50	3359-4	Support (LIM)	3.00	3451-19	Shoulder Rivet for Cam (Sub.)30
2460-55	Cable, Crane, 24", appx., Black	1.00	3359-8	Pivot Pin (LIM, N)	1.00	3451-21	Clamp Plate (O)	1.00
2461-1	Transf. Assy. w/Insul., Black (R)	22.00	3359-21	Pinion Arm, RH	2.75	3451-32	Coil	6.00
2461-1	Insulator, Transf. Car (R) 4 pieces	5.00	3359-22	Pinion Arm, LH	2.75	3454-6	Merch. Cubes, Baby Ruth, ea.	2.50
2461-14	"Transf. L" White Adh. Label	3.00	3359-25	Center Pivot Pin (LIM, N)75	3456-12	Hopper Door	4.00
2466-T10	Drawbar, Tend., Short, 1654T, 2466, 6466 w	3.00	3359-30	Insulating Washer50	3456-13	Hopper Hinge Pin (N)50
2530-5	Railway Express Name Plate ea.	5.00	3360-9	Burro Crane Boom (R)	15.00	3456-15	Plunger Plate Assy., Hopper (O)	9.00
2530-12	Door, for Railway Exp. Agency Car (N)	7.00	3360-18	Handwheel Assy. (LIM)	6.00	3457-17	Pinion Arm, Hard Metal (O)	1.60
2531-9	Marker Lite, L/R, Red, Observation Car60	3360-21	Boom Elevating Nut (O)95	3459-9	Bracket, Coal, Dump Car	2.25
2531-10	Skirt for Observation Car (LIM)	6.50	3360-22	Guy Wire, pr.	2.50	3459-16	Arm (O)	2.00
2531-12	Rear Door, Observation Car (N)	3.00	3360-23	Collector Insulator, Molded	2.50	3459-17	Pinion Arm (LIM) (O)	2.50
2531-15	Tie Bolt and Nut	1.00	3360-25	Idler Gear	3.50	3459-19	Gear, Ore Dump Car	2.00
2531-33	Lens, Center, Clear (O)	1.50	3360-29	Cab Drive Worm (N)	2.00	3459-20	Pivot Screw, Black	2.00
2531-43	Roof w/Bolt & Leus'	10.50	3360-34	Cab Drive Lever (N,O)	6.00	3459-27	Frame Cover, Dump Car (R)	5.00
2531-47	Silver Dawn name plate, Adh. Back ea (R)	2.50	3360-50	Cam Follower Pin	1.60	3459-37	Pin	2.00
2532-16	Vista Dome, Silver	10.00	3360-62	Switch Spring	1.50	3460-NP	Lionel Trains/Freuhauf Nameplate, Set (R)	5.00
2532-22	Bulkhead, Inner, Not Painted (N) (9571-34) ..	4.00	3360-64	Switch Spring Link	1.50	3460-RG	Green Roof, Trailer (R) (LIM)	3.50
2532-23/-24	Window Strip, pair	5.00	3360-93	Coil Assy.	26.00	3460-TS	Trailer Stand, Cooper Jarrett, Metal (R)	2.50
2532-34	Centering Spring	1.50	3360-125	Actuator (O)	17.50	3462-3	Door/Frame Assy., Metal (N)	8.00
2532-41	Plain End, No Doors (N)	5.00	3361-5	Gray Dump Frame, w/out Spring Cup (R)	4.00	3462-7	Top Hatch	2.00
2532-42	Vest, End, Silver (9571-14) w/Doors	10.00	3361-7	Dump Frame, Lock Spring, Flat	2.00	3462-9	Roof Hatch Pin	2.00
2532-49	"LIONEL LINES" Nameplate, (Pr) (R)	4.50	3361-32	Insul. Rivet for GP Relay Bracket75	3462P-14	Platform, Milk, Chrome Finish	2.00
2532-50	"Silver Range" Nameplate, (LIM) (R)	4.00	3362-9	Trigger Pin Assy.	1.50	3462-15	Doorhinge Pin60
2533-12	"Silver Cloud" Nameplate, (LIM) (R)	4.00	3362-12	Finger Tip for Dump Frame, Ni (O)	1.00	3462-17	Door Spring, LH, Metal Door75
2533-50	Lamp Socket Assy for Alum. Pass. Cars	4.50	3362-14	Helium Tank, Wood, Ptd. Silver	1.70	3462-27	Frame Spring, Body Retainer	2.00
2534-7/-8	8-Window Panel, Printed, L & R (R)	3.00	3362-16	Green Dump Frame, Helium or Log Car, also available in gray w/spring recess (R)	3.50	3462-40	White Milkman (R)	3.00
2550-6	Budd Car Bag/Mail Car, Window, ea.	5.00	3362-18	Door Retainer Clip, Milk Car50	3462-70	Milk Can w/Magnet	1.25
2555-SD	Sunoco Decal Set, Specify Numbers	10.00	3362-21	Spring, Trigger, Small Coil50	3462-84	Mechanism Spring (O)	1.00
2560-14	Boom Elev. Assy., Short	6.00	3362-22	Spring, Dump Frame, Large Coil50	3464-6	Merchandise Cube, No Logo (R)	1.25
25600-CB	Crane Boom, Green	35.00	3362-23	Lock Spring Dump He Car, Flat	2.00	3464-7	Trigger Spring50
2623-HP	Hinge Pin	1.00	3364-8	Log for Dump Car50	3464-9	Cam Lever Spring (O)	1.00
2623-17/-18	Madison Car Door Spring, R or L, specify75	3366-11	Frame	3.50	3464-10	Rivet, Shoulder	1.00
2624-S	Silhouette for Windows, Set of 4, or Plain (Mad).7/00	7.00	3366-100	Horse, White, Brown or Black, specify (R) (VERY LIM)	2.00	3464-12	Trigger Pin	1.00
2625-LS	Lite Socket Assy. Mad Car	5.00	3370-W5	Wheel Set w/Cam	5.00	3464-13	Figure Lever (O)	2.00
2625-MT	Madison Car 6 Wh. Truck (U) or (R)	35.00	3370-8	Ratchet, Molded (LIM)	3.95	3464-14	Trigger Armature (Button)	1.25
2625-50	Coupler Centering Spring60	3370-10	Actuator Lever (O)	2.00	3464-16	Rivet, Tubular (AKA 622-17)25
2660-6/-7	Derrick Boom, Green, Prewar (R)	25.00	3370-11	Eyelet40	3464-017	Figure, Gray, MPC (1 Arms Out)	2.85
2660-10	Crank Wheel, PreWar, Open Spoke (R)	2.95	3370-11	Eyelet40	3464-17	Figure, Animated Box Car, w/Slot (R)	2.50
2660-12	Boom Elevating Nut	2.50	3376-13	Cam Follower w/Rings	3.50	3464-42	Blk. Door, or Tuscan, Molded (X3464) (R)	5.00
2660-23	Block & Tackle, Hook to Side (R)	4.50	3376-16	Tension Spring	1.25	3464-43	Trigger Hsg., Sm. or Lg., specify, Plastic	2.00
2660-25	Rivet for 165 Crane Boom (2460-14)50	3376-17	Pin for Giraffe	1.55	3464-72	Door, Metal, Tuscan or Black (R)	7.50
			3376-18	Counterweight for Giraffe (O)	1.25	3469-18	Rivet25
			3376-21	Cam Follower Assy. w/Rings	6.95	3470-3	On/Off Switch Knob, Red Plastic (R)	4.00
			3376-105	Cam Plate Assy. (O)	15.00	3470-4	Basket, Target Balloon	7.00
			3413-NCP	Rocket Nose Cone w/Parachute (R)	26.00	3470-12	Target Balloon, Printed (R)	4.00
			3419-DB	Blade, Helicopter, Double, 2 pieces	25.00	3472-21	Conical Spring, 1950 Model75
			3419-HS	Spacer, Helicopter (R)75	3472-27	Spring Washer (O)75
			3419-LB	Blade, Helicopter (R)	4.00	3472-28	Shim Washer (671M-23)50
			3419-6	Nose, Helicopter, Clear Plastic (R)	1.50	3472-36	Figure, White Soft Molded	3.00
			3419-7	Skid, Helicopter (R)	5.00	3472-45	Door Spring, Milk Car50
			3419-11	Clutch, Helicopter (R)	2.25	3472-46	Door Assy. - Eggshell (R)	5.00
			3419-17	Pawl Spring50	3472-60	Door Assy. - White (R)	5.00
			3419-18	Launching Spool, Early, Small	4.00	3472P-14	Platform, Milk, Plated	2.00
			3419-23L	Winding Spool, Large, 2" (R)	6.00	3474-6	Merchandise Cube w/logo, ea. (R)	2.00
			3419-23S	Winding Spool, Small (TOS)	6.00	3484-6	Cam Lever (AKA 3464-8)	3.00
			3419-24	Spring Tube (O) (SOLD OUT)	4.00	3494-275D	Red, White/Blue "OF/DU" Doors, pr.	29.95
			3419-26	Winding Spool Spring (R)	1.50	3512-LA	Ladder Assy. w/Pulley, String, Spring, etc.	22.00
			3419-27	Cup Washer, Helicopter (O)	1.55	3512-1	Extension Pulley (R)	1.30
			3419-31	Tail Stand, Helicopter (R)	3.00	3512-23	Drive Pulley (O) (LIM)	3.00
			3419-44	Helicopter Tail, Yell., Nat. or Wh., specify (R)	3.50	3512-26	Drive Belt for Fire/TV Car (LIM)	2.50
			3419-45	Retainer Ring	1.00	3512-44	Extension Pulley, Molded Plastic (R)	2.00
			3419-100N	Navy Helicopter, Single Blade Grey (R)	25.00	3512-48A	Spring w/Line Kit	4.50
			3419-102DB	Helicopter, Navy, Double Blade (R)	35.00	3512-49	Line for Ladder w/crimps	3.00
			3424-BP	474-2 Base Plate w/Curve Channel Shoe	15.00	3512-53	Crank (LIM)	1.50
			3424-19	Figure Support Rivet (LIM)	1.50	3512-55	Windlass Drum (N, O)	2.00
			3424-33	Brakeman, Blue (R)	2.50	3512-56	Nylon Gear (LIM)	2.00
			3424-76	Signal Pole, (R) (LIM)	5.00	3512-58	Slotted Lamp Shade, Fire Car	5.00
			3424-78	Teltale (12 pieces), White Plastic	6.00	3512-59	Fire Car Lens, Red	4.00
			3424-79	Teltale Rod, Nickel	2.00	3512-63	Click Pawl (LIM)	1.50
			3424-80	Pole Base (R)	9.00	3512-64	Spring	1.00
			3424-85	O27 Track Clip (O or R)	2.50	3512-66	Spring (LIM)	1.25
			3424-86	O Gauge Track Clip (O or R)	2.50	3512-67	Eyelet50
			3428-M	Postman Magnet	1.50	3519-AS	Antenna Swivel (333-7) Gray Plastic	1.00
			3428-12	Postman w/Magnet	3.00	3519-S	Satellite, 0333-100 for 3501, 3510	10.95
			3428-17	Mailbag w/Pin (N)	3.00	3519-SW	Winding Spool, Long Shaft (O)	5.00
			3434-4	Bracket Assy. (O)	4.00	3519-23	Wind'n'g Spool, Sat. Laun. Car, Sht. Shft.	8.00
			3434-6	Flat Spring	1.50	3520-SA	Searchlite Assy., Complete	12.50
			3434-8	Swing Lever (N)	2.00	3520-7	Searchlite Housing Base w/Washer	6.50
			3434-10	Chicken Sweeper (O)	4.00	3520-11	Searchlite w/Lens & Reflector	6.00
			3444-12	Pulley Pivot (O)	2.50	3520-12	Searchlite Housing, Gray (R)	3.00
			3444-20	Spring, Drive Line (LIM)	2.00	3520-13	Searchlite Reflector (R)	1.00
			3444-22	Conveyor Assy. (O) (LIM)	10.00	3520-16/42	Driving Washer, Adh. Washer, Molded Rub, Pressure Sen.	1.50
			3444-31	Figure, Hobo (LIM)	2.50	3530-6	Door Guide	1.25
2671W-5	Tender Body, LL, Penn or NYC, specify (R)	34.95						
2671-TBS	Tender Body Screw, 6 x 1/4 RHST Rec.50						
2671T-BL	Back-up Light Kit (R)	16.50						
2671W-13	Water Scoop, Tender (Corp.)	5.00						
2671W-20	Drawbar, Tender	2.50						
2700-206	"O" Ring Belt for (2315 Motor)	1.50						
2716-021	Searchlite Bracket	1.00						
2722-050	Smoke Unit (N)	20.00						
2729-020	Red Mail Bag w/ Magnet (N, O)	2.00						
2755-D	Decal, Sunoco, Black (R) pr.	8.00						
2755-25B	Tank Dome, Black	3.50						
2755-25S	Tank Dome, Silver	3.50						
2758-12/-14	Double Door Box Car, Metal, Pair (R)	20.00						
2768-024	Brown Roof (O), (LIM)	9.95						
2768-055	Balcony, Brown	1.00						
2768-304	Yellow Lamp (N)	2.50						
2768-314	14V Yellow Lamp (N)	2.50						
2800-PT	1-700E Pilot Truck w/Large Wheels (N, O)	26.00						
2810-DK	Black Dished Knob (R)	3.95						
2848-047	Bubble Tube for 455, LTI (N)	5.95						
2855-D	White or Black Letters/Logo, SUNX, Specify ..	10.00						
2900-1	Lockon Track	2.50						
2909-1	Smoke Fluid, Dropper Bottle, Lionel/MPC	8.00						
2948-010	Adapter Track Pin, "O" to "O27" (N)	3@ 2.00						
2958-072	Ladder (O) (LIM)	2.80						
2980-2	Conversion Coupler, MPC (N)	11.00						
3330-SK	Submarine Kit (R)	40.00						
3330-5	Sub Retainer Wire (O)	2.00						
3330-19	Submarine Periscope (R)	2.00						
3330-20	Submarine Nameplate (R)	3.00						
3349-1	Turbo Missile (R)	5.00						
3349-5	Launcher Spring (SOLDOUT)	2.00						
3356-21	Runway Stop Assembly (O)	5.00						
3356-32	Track Bracket, LH (O)	3.00						
3356-47	Coil Assy. w/Leads (O) (LIM)	16.00						
3356-60	Grommet, Rubber (O)	1.00						
3356-100	Horse-Wh., Blk. or Br., specify, 9 per							

PART #	DESCRIPTION	PRICE	PART #	DESCRIPTION	PRICE	PART #	DESCRIPTION	PRICE
3530-35	Lug, Crimp-On (O).....	1.50				6504-145	Shaft (R).....	.50
3530-48	Drive Washer, 6 Finger (AKA 3520-16).....	.75				6505-24	Radar Screen (44-23 Control Panel).....	2.00
3530-GW	Green Double Strand Cable, Gen. Car, 4' appx.....	2.50				6505-42	Drive Belt (Rubber) (3512-26).....	2.00
3535-1	Gun w/Bracket (R).....	16.00				6505-65	Pulley & Shaft (N, O).....	3.00
3535-9	Gun Bracket, Red (R).....	6.00				6506-25	Gun Mount (LIM).....	2.75
3540-5	Radar Assy.	24.00				6506-35	Gun (LIM).....	2.50
3540-26	Pulley/Shaft Assembly (TOS).....	5.00				6507-85	Boat Cradle, White, 2 pieces required, ea.....	2.00
3545-13	Counter Weight.....	2.50				6508-34	Crane Boom.....	4.00
3545-14	TV Screen (R).....	2.00				6510-130	Collector Rivet (#41 Coup).....	.50
3562-8	Cam, Figure for Barrel Car.....	3.00				6511-24	Pipe, Silver Plastic (R).....	1.00
3562-48	Barrel Ramp Extension (Clip).....	4.00				6512-BFY	Cherry Picker Bucket w/Figure & Yoke (R).....	25.00
3562-49	Coil Mounting Screw.....	.75				6512-AS	Cherry Picker Assy. (R) (LIM).....	21.00
3562-62	Figure, Straight Slot or "T" Slot.....	3.00				6512-6	Yoke for Cherry Picker (R) (LIM).....	5.00
3619-HO	Helicopter Small Red (R).....	20.00				6512-4	Figure for Cherry Picker (R).....	3.00
3650-12	Generator Motor, Gray (R).....	8.00				6512-LA	Ladder Assy w/Pulley, String, Spring.....	22.00
3650-15	Copper Contact Spring (O).....	2.00				6512-13	Turret, Gray (N).....	3.00
3650-22	Spool Hand Crank (O).....	3.50				6515-10	Plastic Frame, Tank Car (O).....	8.00
3650-30	Searchlite Extension Assy. (R).....	22.00				6517-5	Smoke Stack.....	.75
3651-21	Stake, Ni, Prewar "O" Ga Lumber Car (R).....	1.50				6517-6	Caboose End Platform, Bay Window (N).....	3.00
3656-5	Sliding Door Assy.....	9.00				6517-7	Smokestack, Short Metal (O).....	1.00
3656-11	Armour Emblem, Pr (R).....	1.50				6517-8	Caboose Ladder, BayWindow.....	2.75
3656-16	Round Shouldered Washer (O) (LIM).....	.60				6517-12	Caboose End Platform.....	3.00
3656-17	Adhesive Pad, 10 per sheet.....	4.00				6518-1	Insulator, Set of 4, 2 Long, 2 Short (R).....	3.50
3656-34	Black Cow (R) (Orig. 3.00).....	2.00				6519-14	Guy Wire, Condenser Car (O).....	1.75
3656-59	Rivet, ea.....	.25				6520-9	Searchlite Bracket, Metal.....	2.00
3656-66	O Gauge Ground Clip.....	1.50				6520-11	Lens, Searchlite, Clear.....	.75
3656-67/68	Pow. Blade, "O"/"O-27", 2pcs.....	3.00				6520-14	Speed Nut (O, LIM).....	.75
3656-72	RH Gate (Yor O).....	3.00				6520-17	Generator, Orange (R).....	10.00
3656-79	LH Gate (Y or O).....	3.00				6520-37	Eyelet, Black.....	.50
3656-129	Ramp, Cattle Pen, Yellow (R).....	26.00				6530-8	Door, White, Fire Instr. Car (R).....	2.50
3656-132	Adjusting Nut for 356.....	.50				6544-TCP	Target Car Pin & Retainers.....	2.00
3656-143	Bridge Complete, (U,O) (SOLDOUT).....	28.00				6555-D	Black Letters/Logo, Sunoco.....	7.50
3656-153	Door Guide Drive Stud, Str. or Spiral.....	.25				6557-9	Smoke Deflector (R).....	6.00
3656-156	Power Casing (O).....	3.50				6560-12	Boom, Black (R).....	7.00
3656-169	Adhesive Pad, Sheet of 10.....	4.00				6560-13	Hook, Block & Tackle Assy., Hook to side.....	3.75
3659-19	Gear Cam.....	3.50				6560-16	Pivot Stud (O).....	2.00
3662-10/14	Milk Car Door, Brown, Right (R) L or R.....	2.50				6560-20	Boom Nut, Stamped.....	.75
3662-18	Door Retainer.....	1.25				6560-21	Speed Nut.....	.50
3662-19	Door Spring.....	.75				6561-6	Band w/Clip-on Ends for Reels, ea.....	2.00
3662-31	Roof Door, Brown (O).....	2.00				6572-REA	Decal (Pr) (R).....	5.00
3662-36	Ret. washer for Milk Car (671M-22).....	.25				6650-13	Retain "C" Ring.....	.50
3662-38	Push Stud.....	1.00				6650-14	Spring Washer.....	.50
3662-52	Groove Pin (LIM).....	.75				6650-18	Launcher Pin (N).....	2.00
3662-60	Milk Can, Gray Plastic, Metal Base, Non-magnetic.....	2.00				6650-20	Button Spring.....	1.00
3662-60A	Milk Can, Non-magnetic, alum.....	1.25				6650-40	Roller, Black Plastic (R).....	3.00
3662-62	Milk Can, Non-magnetic (R).....	1.00				6650-47	Diaphragm for Rocket Launcher, Rubber.....	6.00
3662-69	Cylinder Assy. (TOS).....	1.75				6650-48	Wire Link, Trigger.....	.75
3665-5	Trigger Wire.....	1.50				6650-49	Launcher Lever (N).....	7.00
3665-7	Diaphragm (O) (LIM).....	6.00				6650-51	Release Button, Black Plastic (R).....	3.00
3672-BMC	Bosco Milk Can (R).....	3.00				6650-80	Missile, Red and White (R).....	7.50
3672-50	Bosco Platform, Assy. (R).....	35.00				6651-110	Wood Shell for Cannon Car.....	1.25
3814-53	Brown Merchandise Cube, Baby Ruth (R).....	2.00				6655-015	Tender Front Coupler, Plastic (N),.....	1.50
3830-1	Submarine, Operating (R) (WHILE THEY LAST).....	55.00				6655-346	Compression Spring for Pick-up (LIM) (MPC).....	.50
3830-106	Periscope, Submarine, Black (R).....	2.00				6660-8	Guy Wire, Boom Car.....	2.00
3830-109	Nose w/Hook, Submarine (R).....	5.95				6660-15	Yellow Mast (9378-015).....	4.00
3830-111	Conning Tower, Submarine (R).....	3.95				6660-19	Crank.....	.75
3830-116	Rudder, Submarine, Vertical (R).....	3.95				6660-32	Stop Pin.....	.50
3830-117	Stabilizer, Submarine, Horizontal (R).....	3.95				6664-15	Dump Frame, Dark Grey, w/Coil Spring Receptacle.....	3.95
3830-118	Bottom Plate, Clear Plastic, Printed.....	3.50				6666-301	Blinking Lamp, Screw Base (Sub 258C).....	2.50
3830-121	"O"-Ring, Submarine.....	.75				6671-010	Color Screen (LIM).....	3.00
3927-16	Driving Arbor (R).....	5.00				6672-16	Door Guide, Black Steel.....	1.00
3927-24	Sponge Plate.....	2.00				6672-18	Door Guide, Floating, Spring, Copper.....	3.00
3927-25	Sponge, Track Cleaning (R).....	.50				6800-B	Bonanza (R) (LIM).....	40.00
3927-25A	Sponge w/Adhesive Back.....	1.10				6800-14	Bonanza Propeller (R).....	4.00
3927-29	Swivel Bracket.....	4.00				6801-9	Retainer Band, 6".....	1.50
3927-32	Wiper Carriage Assy. (R).....	18.00				6801-60	Boat, Blue or Br. (specify) (R) (WHILE THEY LAST).....	16.00
3927-36	Toggle Spring.....	1.25				6801-64	Gray Boat Cradle (R).....	4.00
3927-38	Track Cln'g Bot'l, One Pc, Gray Plas. Ea.....	5.00				6803-1	Seat, Pyro Truck (R).....	6.50
3927-47	Track Cleaning Sponge and Plate Assy.....	2.50				6804-1	Speaker Set, Pyro (R).....	6.50
3927-50	Track Wiping Cylinder.....	.50				6804-5	Pyro Truck Transf. Mount (R).....	5.95
4150-062	Control Arm (O).....	2.50				6805-11	Foam Pads w/Hole.....	2.00
4357-WS	Caboose Window Shell.....	7.00				6805-15	Spring Clip for Rails.....	1.50
5041-1	O-27 Insulating Track Pin (Dozen).....	2.00				6805-16	Red Base (O).....	12.00
5042-1	O-27 Steel Track Pin (Dozen).....	2.00				6812-CH	Crank Handle.....	2.00
5101-139	Min. Screw Base Bulb.....	2.00				6812-11	Compression Spring (N,O).....	1.50
5132-056	Binding Post Nut (LTI).....	1.50				6812-5	Track Maint. Body Gray (O).....	14.00
5132-125	Coil Assem. (N), 022 Replacement.....	5.00				6814-31	Stretcher, White (R) (SOLDOUT).....	2.00
5132-152	Fixed Voltage Plug.....	1.50				6814-35	Oxygen Bottles, Medical Caboose (R).....	2.00
5132-161	Cover, Switch Motor.....	7.50				6818-T	Transformer Assy.....	23.00
5132-200	Switch Controller (N).....	15.00				6819-HN	Helicopter, Navy.....	18.50
5500	O Straight Track.....	3.10				6822-10	Searchlight Retaining Ring (O).....	1.00
5501	O Curved Track.....	3.10				6822-52	Searchlite Housing, Black, w/Reflector.....	4.00
5543-048	O Gauge Insulating Track Pins (Dozen).....	3.50				6826-CTL	Christmas Tree Load (R).....	23.95
5551-0	O Gauge Steel Track Pins (Dozen).....	3.50				6830-SNO	Sub., Non-Oper. (Spec.Ord) (R).....	40.00
5903-1	Slide Switch (N).....	8.00				6844-6	Missile Stand, High, Gray Plastic (R).....	7.00
						6900-045	Smoke Stack, Tall, Caboose (N).....	2.00
						6900-55	Lens (Red) (SOLDOUT).....	.50



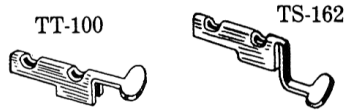
Body
6026-3

PART #	DESCRIPTION	PRICE	PART #	DESCRIPTION	PRICE	PART #	DESCRIPTION	PRICE
6907-028	Caboose Ladder, Standard "O"	2.00	8142-045	Screw	.50	8903-120	DC Motor w/Gear (N)	34.00
6927-035	Dummy Coupler "Clarabel" (N)	1.00	8142-049	Oval Head, Recessed Screw, 6-32 x 3/8	.50	8903-135	Light Bracket, Molded Black (N)	1.50
7606-045	Smoke Stack (N)	2.00	8142-052	Screw (Sub: 6-32 x 1/4 RH N: Plate)	.25	8950-35	Gear Wheel, F3	4.50
7606-085	Tender Frame (N)	6.00	8142-065	Motor Mounting Screw	.50	8960-052	Palnut	.30
7874-014	Dump Frame, Rust Painted (LIM)	3.50	8142-080	Front Truck Washer (N)	.50	9020-008	Bulkhead, Molded Plastic	2.00
8000-043	Cam Follower (N)	3.00	8152-035	Mounting Pad/Sound Board	1.00	9020-010	Plastic Brakewheel for MPC Cars	.75
8000-203/-204	Drive Rod Assy. Pair (N)	24.00	8152-089	Collector Assy	1.50	9050-054	Fast Angle Wheel Set/Axle Assy	2.00
8002-T50	Truck w/Strap, No Coup	10.00	8152-173	Collector Assy. for SD-24	4.50	9050-056	Knuckle, Celcon w/Molded Spr. (N)	.75
8002-T60	Coupler Arm Only, Nylon (LIM)	1.50	8204-T36	Speaker (8152-536) (LIM)	7.50	9050-057	Uncoupler Plunger	1.50
8002-T70	Coupler Arm Assy., Die Cast	4.00	8205-088	Mars Lite Circuit Board (TOS)	30.00	9050-150	Roller Pickup Assy, w/Ground	5.00
8002-022	Brush Plate Assy., AKA 681-105 (LIM)	15.00	8206-081	Four Finger Contact, MPC/LTI	4.00	9060-006	Smokestack, Short Bay Window Caboose	.75
8002-029	Push Rod, Smoke (N)	1.00	8206-082	Two Finger Contact, MPC/LTI	3.50	9060-025	Platform, Molded, for Caboose (N) (SOLD OUT)	2.50
8002-035	Screw, MPC	.50	8206-056	Rubber Traction Tire, Steam	1.00	9090-018	Dummy Coupler (O)	1.50
8002-123	Screw, MPC-2-56x3/16	.35	8209-119	Brushplate (N)	4.00	9123-007	Car Retainer (N)	1.00
8002-125	Armature, Steam Turbine (LIM)	28.00	8209-120	Collector Spring, Br (O)	1.50	9150-050	Coup. Trk. Oper./Frt. Cars (MPCTYPE))	8.50
8002-161	Headlight Lens, Steam	1.00	8209-165	Collector Assy. (N)	2.75	9150-058	Uncoupler Armature Tack, Black	.30
8003-20	End Wheel (N)	6.00	8215-61	SOS Female 3 Pin Receptacle	9.00	9150-159	Roller Contact	.50
8003-21	Center Wheel (N)	6.00	8240-010	Ornam, Whistle (O, N)	.75	9152-054	Tank Dome (N)	1.00
8004-028	Full Band, "General" (O)	1.50	8240-015	Bell, Ni Plated Plastic, 2 Prong	.75	9160-017	Pickup Assy. (9272-028)	5.00
8004-029	Small Band (O)	1.00	8240-055	Drive Rod	3.00	9160-020	Lite Socket Assy, w/Leads, Wedge Type	1.00
8004-030	Large Band (O)	1.00	8240-071	Screw for Coupler, Truss Hd. (N)	.60	9160-500	Washer	.20
8005-T15	700T Coal Pile (N)	9.95	8250-035	Fiber Washer for Coupler T-Bar	.25	9224-041	Brown Horse w/Nubs	2.00
8005-040	Lantern	.75	8252-010	Marker Lens, Alco, Red Pair (O)	2.00	9232-060	Brake Wheel Shaft	.50
8005-041	Steam Dome (O)	1.00	8260-030	Rivet for 2353-022 Bracket	.30	9234-056	Truck Stud (TOS)	1.00
8005-045	Bell, "General", (N)	2.00	8263-055	Coupler, Plastic for DC Power Truck	4.75	9234-060	Knuckle Coupler Conversion Plate Assy w/Tab	8.95
8005-046	Sand Dome, w/Stanchions (O)	1.50	8263-60	Coupler Arm w/knuckle	5.00	9234-063	Coupler Head Knuckle Assy	2.75
8005-060	Smokestack Cover, General	1.00	8263-073	Pilot, GP (O)	3.00	9235-020	Boom	2.50
8005-540	Steam Chest Assy. (N)	50.00	8264-014	Snow Plow, Brown (O)	16.00	9272-030	Lamp Socket (N) (Wedge Type)	2.50
8005-517	Eccen. Crank Shoulder Scr.	3.00	8264-064	Bell	.75	9300-016	Green Dump Frame (R)	4.00
8007-041	Lever & Piston Assy. (O)	9.00	8265-025	Number Board	3.00	9301-015	Magnet, U.S. Mail Car (N)	2.00
8008-105	DC Motor w/Pinion (N)	24.95	8265-075	Bell, Mounts under Body (LIM)	1.00	9303-014	Dump Frame, Yellow, MPC/LTI (O)	3.50
8010-026/027	Red Marker, pair	1.00	8265-515	Pilot for SD-40 (O)	2.50	9307-014	Hobo Figure, MPC/LTI (O)	4.00
8010-028	Horn, Ornamental	.75	8265-545	Snow Plow (N)	2.00	9307-027	Cop Figure, MPC/LTI (O)	4.00
8010-029	Gold or Silver Bell, specify	1.00	8265-576	Worm Wheel, Mag Axle (N)	5.00	9335-014	Dump Frame, Brown, MPC/LTI (O)	3.50
8010-030	Radio Wheel, Chrome	1.25	8268-060	Coup. Nylon, Dummy, Short (N)	2.50	9378-015	Yellow Mast (Main Beam) (O)	4.00
8010-105	Pivot Bearing, Motor Truck	.75	8302-15	Front Truck Assy	7.50	9398-014	Dump Frame, Red, LTI (O)	3.00
8010-115BR	Worm Wheel, Brass	4.00	8302-16	Front Truck Spring	1.00	9399-014	Dump Frame, Black, MPC/LTI (O)	3.50
8010-115N	Nylon Worm Wheel	2.00	8306-55	Roller, Hudson 1964 (O)	2.50	9408-025	Lift Handle, Black Plastic (N)	.50
8010-116	Drive Gear, Nylon (N)	1.50	8306-140	Male Plug Assy. for Mod. Hudson	5.00	9408-030	Wire Grab Rail, Coil Cover (N)	1.00
8010-116S	Drive Gear, Steel (600-111)	3.50	8307-061	Female Plug Assy. (O) (LIM)	4.00	9456-012/013	Door, Auto Box Car, Brown (6468), pair	5.00
8010-117	Pinion Gear, Nylon (N)	1.50	8310-022	Drawbar for Engine	1.50	9500-018	Coupler, Non-Operating (O) (LIM)	2.50
8010-117S	Steel Pinion Gear	3.00	8352-022/023	RH/LH Hand Rail (O, LIM)	each 1.50	9500-060	Coupler Arm, Self Centering (O) (LIM)	3.00
8010-123	Geared Drive, Cast Wheel w/Groove	5.00	8352-055	Front Marker Light	.75	9502-020	Observation Gate (LIM)	1.00
8010-125	Armature (N), MPC Diesels	35.00	8352-300	Lamp w/Sub Base Only, MPC (8352-311/8352-310)	1.25	9513-150	Pickup Roller Assy. (MPC/LTI) (8050)	4.50
8010-139	Brush Plate	3.50	8352-311	Lamp w/Holder	2.00	9536-054	Collector Bushing (MPC 6 Wh Trk.) (N)	1.25
8010-180	Molded Coupler, Dummy, w/Spring (N)	2.00	8352-320	Light, Socket w/Lead	1.50	9536-056	Nylon Bearing	each 1.50
8020-015	Window Shell, also used for 2023	1.95	8360-56	Window Shell	3.00	9536-057	Collector Roller Assy. (N)	2.75
8030-GPS	Geep Shell, IC (N)	50.00	8368-024	Side Rail, 2"	3.50	9536-059	Pick Up Axle Contact, Cu (O), Use SE-24	1.00
8030-013	Light Socket for 161 Lamp w/Clip	1.50	8376-074	Side Frame	5.00	9536-062	Nylon Washer	.50
8030-014	Lamp Socket w/Lead & Grnd. Clip MPC	1.50	8376-521	Locator Tab (N)	2.00	9550-50	Die Cast Truck, Pair	24.00
8030-020	Handrail, RH	2.50	8376-546	SD-40 Snow Plow	3.00	9550-058	Bolster Spring (O)	.75
8030-021	Handrail, LH	2.50	8379-007	Fire Car Seat/Gun, Yellow	4.00	9551-044	Ventilator, MPC Pass. Cars	.75
8030-022	Truck Pivot Stud	1.00	8401-020	Bridge Rect. (N)	2.50	9566-013	Door	1.75
8030-023	Cup Washer	.25	8403-021	Front Truck Stud (N)	1.60	9570-024	Plain End	3.50
8030-025	GP Stanchion Handrail Support, RH, Molded	2.50	8403-022	Front Truck Spring (N)	.60	9570-107	Flat Washer, Ni (N)	.30
8030-030	GP Stanchion Handrail Support, LH, Molded	2.50	8403-030	Drive Rod	2.00	9571-014/-034	Vest. End Assy., Silv. (O)	8.00
8030-076	Pilot, Molded Plastic (N)	4.00	8404-T06	Clear Lamp Holder (N) (LIM)	1.50	9598-064	Rear Door, Observation	1.50
8030-115	Gear, Nylon Worm Wheel	2.00	8459-700	Drive, Belt 3"-D, (N) (58-7)	3.00	9700-015	Door Guide, 4 Pin, MPC, Pair (SOLDOUT)	1.50
8030-118	Allen Screw	.50	8500-030	Pick-up Shoe for Low Cost Locos (O)	1.00	9700-020	Truck Rivet, Plastic	.50
8040-007	Manual Rev. Switch (O)	4.00	8500-045	Screw, MPC/LTI	.30	9700-025	Body Screw, 4 Pin	.25
8040-009	Drive Rod (O)	2.00	8503-125	Armature, 622 (N, O)	40.00	9700-15 BW	Steering Wheel/460, "S" Ga	1.50
8040-071	Trusshead Screw	.50	8507-150	Shunted Motor Brush, pr	3.00	9775-350	Spacer, Black Nylon	.50
8040-117	Idler Gear, Nylon (N)	2.00	8585-90	Frame Support (N)	.75	9805-035	Truck Mtg. Screw, TH Rec., Each	.25
8040-118	Cluster Gear, Nylon, MPC/LTI (N)	2.50	8600-046	Motor Mounting Screw, 6-32 x 3/4 OH Rec	.30	9823-007	Stakes, Flat Car 12 (N)	4.00
8040-150	Brush for MPC Motor	2.00	8603-065	RH Crosshead Assy	3.50	9850-015	Door Guide, Plastic, 2 Pin, MPC	1.50
8040-151	Headlight Lens, Molded (O)	.50	8606-504	Cowcatcher / Hudson, 773 (O)	20.00	22964	Rail Sounds Diesel Upgrade (N) (LIM)	70.00
8040-157	Brush Spring (pair)	1.50	8610-042	Smoke Unit Assy w/Lite Bracket (O)	22.00	A-77	Eyelot for 289E-20 Clip	.25
8040-171	Screw	.25	8616-019	Gold Bell, Polar Exp	5.00	AM-62	Gear Stud for Lionel Jr. Motor	2.00
8040-172	Truck Mounting Screw, 4-40 x 5/16 THST Rec	.25	8659-335	Flat Ground Spring, Replaces 2367-52 (N)	2.00	AM-70	Intermediate Gear for 1688 (1664 Plate Mtr.)	3.00
8056-540	Steam Chest Assy. for 1-700E etc. (N)	65.00	8701-064	Steam Dome	2.50	AM-70TS	Threaded Stud, 6-32	4.00
8102-T61	Male Plug, 3 Prong (N, O, LIM)	10.00	8701-T70	Operating Arch Coup. Truck	5.00			
8111-031	Marker Light, Red, ea	.75	8701-084	Boiler Door	.75			
8141-22	Screw Self Tapping	.50	8701-100	Motor for MPC General	50.00			
8141-051	Smoke Unit Repair Kit, MPC/LTI	5.00	8701-150	Lantern, General (N)	2.00	B-292	Transf. Cord w/Molded Plug (R)	7.00
8141-055/056	Htr. Elem. w/Wick, Liq. Smoke	3.00	8702-132	Brush Plate w/Bearing (N)	12.95	CBC-1	Combination Coupler, Long Shank (also Ives)	3.25
			8750-056	Window Shell	3.00	CON-8	Washer, Steel (Nylon alt.)	.50
			8753-045	Lamp Socket Assy., MPC GG-1 (O)	2.00	CON-20	Rotary Control Switch	25.00
			8801-77	Brush Plate Bearing (N)	1.00	CP-1	Striker Plate, Pre-War Box Couplers	.75
			8803-071	Truck Sidew/Stud (O)	10.00	CP-2	Box Coupler Hood, 2 Ribs (R)	1.25
			8803-073	Pilot, RS-3(N)	4.00	CP-5	Box Coupler Hood, w/Simulated Knuckle	1.25
			8803-136	Side Rail Coll. Shoe	2.00	CP-7	Coupler, Twist Latch, Dropped (R)	3.00
			8806-576	Worm Wheel, Phenolic (N)	8.50	CP-7R	Rivet for Latch Coupler, Shoulder w/Notch	.60
			8812-144	3 Chime Horn, Ornamental (LIM)	2.00	CP-8	Latch Coupler, Short w/Hole	3.00
			8813-BN	Braided Nylon Line, 31"	1.00	CP-9	0-27 Latch Coupler St. Shk. (R) Lionel Jr.	2.00
			8851-145	Collector Assembly (N) (2383-16)	6.50	CP-21	Latch Coupler, Long w/Hole, prewar Std. Ga.	5.00
			8855-060	Coupler Arm, SD-18 (N)	2.00	CP-38	Box Coupler Hook	.60
			8855-225	Armature, LIMITED (N)	30.00	CP-43	Swivel Pin	.75
						CP-58	Truck Center Stud, Short	.70



8141-056	Fiberglass, Wick Only (N)	.50
8142-16	Bell, Molded Plated (N)	1.50
8142-T24	Tender Jack Plug, Male (O) (LIM) (SOS)	1.00
8142-032	Drawbar, Engine, Ni	1.50
8142-038	Drive Rod	1.25
8142-040	Crosshead Guide Plate	.75
8142-041	Spacer Bushing, Mach. Alum. (O)	.75
8142-044	Side Rod Screw	.25

CONVERTS PREWAR TO POSTWAR



COUPLING ADAPTERS - \$3.00 EA

"O", 0-27 LIONEL
 1023-LC
 \$7.95

MISCELLANEOUS ITEMS / SPECIAL DISCOUNTS

BILD-A-LOCO, Std. Ga. Pickup Assy. (R).....	20.00
BILD-A-LOCO Nameplate Brass Etched (R).....	12.00
BILD-A-LOCO, Std. Ga. Motor Brush & Spring, pr.....	4.00
Gar Graves Track Plus, Dozen (OK for Super "O").....	2.50
Retainer Bands, Original Type for Car Loads, Specify Length 2-1/2", 3", 4", 5", & 6", ea.....	1.25
Lionel Bag of Artificial Coal (LIMITED SUPPLY) See Illus. Above.....	7.00
Logs, Lionel "O" Ga 7/16" D x 4-5/8" L, Stained Set of 5 (R) (164).....	1.50
Marker Lite Repair Kit, 1615/1656, w/Jewels, Specify Red or Green.....	3.00
Prewar, O-27 Latch Coupler, Straight Shank, Twist Tab (R).....	2.00
Prewar, Combination Latch Coupler, Long or Short (Specify).....	2.75
Handrail Stock, .041" D, for 671/675, Nickel Finish, ea.....	1.00
Handrail Stock for Prewar Cars & Locos, Brass or Nickel .072, 12".....	2.00
Handrail Stanchion for Prewar Engines, Stamped, Nickel Plated, 380-7 each.....	.50
Hook Coupler, Ni, for 114 Std. Ga Early Box Car, etc.....	2.00
Stamped Grabrail, 1" Long, Br. or Ni., for Prewar Lionel Cars.....	1.50
SUPER MOTOR Std. Ga. Pickup Assy. (R).....	15.00
SUPER MOTOR Brush/Spring Pr.....	5.00
Super Motor Nameplate for Pickup (LIM).....	6.00
O-27 Two Piece Wood Barrel (R) (ea.).....	1.25
Postwar Repair & Operating Manual/1970,Kalmbach/Greenberg (plus S&H \$6.00).....	24.95
Dr. Tinker Repair Book Vol. 2 (add 6.00 S&H)..... LIMITED OFFER.....	20.00
Dr. Tinker Repair Book Vol. 1, Black & White Repro.....	\$20.00 + S&H \$7.00

NOTICE:

When ordering screws, put shaft size first, then threads per inch, then length and, finally, head type.

EXAMPLE: 4-36 x 1/4 RH RH=Round Head
 KEEP IT SIMPLE.

Screw Rivet & Spring Assortments, \$55.00 ea. Send for a free list

NOTICE

Greenberg's "Lionel Modern Era Diagrams and Parts Lists" book is out of print. Kalmbach has no plans to reprint. Contact Lionel for technical data, 1970 to present, now down loadable.

BACK ISSUES

ORDER The "Coupler" newsletter. Covers interesting service and repair subjects by the author, Dr. Tinker. Also, letters from readers. BACK ISSUES 1997, 1998, etc. Each year is \$16.00 plus shipping. If you want 1997, 1998, 1999, 2000 and 2001, pay only \$75.00 Supply is limited for Back Issues! All years may not be available after 2/1/06.

Make payment to: **David Laughridge**
 c/o The Coupler® Back Issues
 P. O. Box 242
 Lexington, MA 02420-0003



YOUR BEST SOURCE FOR SCREWS & RIVETS

For over 30 years, we have offered the Lionel Replacement Screw Assortments to the market at cost. But costs have increased in that period, and it is necessary to increase the per pack of 200+ screws to \$55.00 each. The clear plastic bins will continue to be supplied at no additional charge. S&H is \$9.00 per order, unless included w/a parts order.

Plan ahead by ordering your screws,rivets and springs, in assortments.

DR. TINKER® PARTS & SERVICE

DR. TINKER® APPROVED SERVICE PRODUCTS

STOCK #	DESCRIPTION	PACK	RSP
1001-CSK	Liquid Smoke Conversion Kit, w/Liner, Top, Gasket, Wick, Sleeve & Instructions	1 Kit	\$ 5.00
1002-W	Blackener f/Steel & Nickel Finishes, Large	4 oz.	10.00
1004-S/L	Smoke Fluid, w/Dropper for MPC/LTI/Lionel	2 oz.	10.95
1005-B	Rubber Sheathed Pick-up Wire, Braided, Original Specification	per ft.	1.50
1008-L	White Lube, Original Lionel Formula, Lubriplate Large	tube	7.00
1010-LB	Plastic Compatible Oil w/Needle Nozzle, LaBelle #107	bottle	9.50
1019-O	Rust Dissolver	4 oz. bottle	12.00
* 1020-D	Track Cleaner, "WIPE AWAY"	4 oz. bottle	7.00
1021-G	"Goo" Contact Cement, for Mounting Smoke Gaskets, Drive Washers, etc.	1-1/8oz. tube	7.00
* 1022-Q	"O" Scale Engineer & Fireman, pair, LH & RH Hand Painted, Sitting Figures	for Cab	7.50
1023-LC	Bag of Coal		7.95
1024-N	F-3 Horn Wire Sleeving, Original Spec.	5" appx.	1.00
1101-D	Commutator Cleaner - Dr. Tinker® Brand	4 oz. bottle	3.00
1105-G	Goo Gone, bottle	1 oz. bottle	2.00
* 1106-SN	Semichrome Polish	tube	14.00
1110-AL	Accessory Line, Replacement for Cranes, etc., 4' appx.		1.00
1110-SP	Smoke Pellets, 50 Pills appx.	Bottle	16.95

*Available in case lots. Dealers inquire on your shop Letterhead.
 SUBSTITUTES MAY BE NECESSARY FOR ABOVE ITEMS

SCREW, RIVET & SPRING ASSORTMENTS

In Clear Plastic Bins

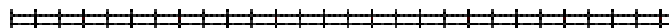
S1 Popular Screw Ass't #1 - Common Use.....	\$55.00
S2 Popular Screw Ass't #2 - Common Use.....	\$55.00
S3 Flat Head Ass't #3 - Lionel Screws.....	\$55.00
S4 Round Head Ass't #4 - Small Screws.....	\$55.00
S5 Binding Head Ass't #5 - Lionel Screws.....	\$55.00
S6 Fillister Head Ass't #6 - Lionel Screws.....	\$55.00
S7 Phillips Head Ass't #7 - Lionel Screws.....	\$55.00
S8 Self-Tapping Ass't #8 - Lionel Screws.....	\$55.00
R1 Rivets/Pins Ass't #1 - Lionel.....	\$55.00
R2 Rivets/Pins Ass't #2 - Lionel.....	\$55.00
R3 Rivets/Pins Ass't #3 - Lionel.....	\$55.00
SPR1 Spring Ass't #1 - Lionel.....	\$55.00
MB&S Motor Brush/Spring Ass't.....	\$55.00

Add \$9.00 for shipping for entire order of above
 (Price for S&H is same, regardless of how many Asst's. you order)
 Individual Machine Screws are .40 each

RIVET TOOLS

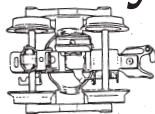
Knuckle Pin Tool Set, Small w/Two Tips and Posts.....	175.00
Super Riveter Tool, Heavy Duty, w/Truck Rivet Tip.....	95.00

Special 175.00 Complete Set includes shipping. Value 186.80
 Above prices do not include S & H. Send for list for contents.



Great Gift Idea!
Custom Wood Rivet Tool Cases Available
 Call 781-862-5798 for details. \$75.00

Flying Shoe Bulletins



Factory Spec Sheets,1945 Trucks
 \$5.00 plus postage

REFERENCE SHEET

Refer to parts list for items not priced

Post War Trucks & Coupler Parts

4.50 DRUM 259E-1	4.00 PLUNGER & PAWL	1.00 SHIELD 259E-41	7.50 COIL 100-31	4.00 (5.00 Nickel) SINGLE CONTACT 100-46	4.50 (5.50 Nickel) MULTIPLE CONT 100-45
100-25	100-8 100-11 2332M-10	100-5 (STRAIGHT LEVER) 100-4 (CURVED LEVER) 100-9 (STR. LEVER) 100-4 (STR. LEVER)	100-7		
54.00	54.00	54.00	54.00		
No. 100-25 replaces 100-1, 100-10, 671-90, 726-90, 224E-35, 2330-300.	Short upward lever in back. Used in No. 2332 locomotives. No. 100-11 has shorter flexible wire leads as required in Nos. 204, 205, 208, 209, 217 and 218.	Long straight downward lever in back. Replaces rears in 100-20, 622-90 and 2333-60. No. 100-5 used in large GM diesels.	Downward lever in back. Used as substitutes for 100-2 in 1130 and 2034 locomotives. Also in 601, 602, 611, 613 and 621 locomotives.		

HORSESHOE WASHER 480-18	RETAINING WASHER 3662-36	MOUNTING CLIP (See Note)
CAR FRAME	Alternate Part PIVOT STUD 484-4 (For 484-1 Truck)	TRUCK BRACKET
PIVOT STUD CP-58	OR	
GROUND WASHER 9T-16		
TRUCK BRACKET		

Truck Mounting Clips are made in three sizes to fit different car frames. For easy identification they are colored as shown

PART NO.	COLOR	"A"
6257-10	GREEN	.085
600-15	ALUMINUM	.100
1002-6	BLACK	.145

BASIC TRUCK PT-1	PIVOT STUD CP-58	BASIC TRUCK 479-1
	TRUCK BRACKET	
	TRUCK SIDE TC-4	
	AXLE 480-33 or TC-118	
	WHEEL TC-70	

Although Basic Truck PT-1 can be easily made up by riveting Pivot Stud CP-58 to the Basic Truck 479-1, it will continue to be sold as a unit as long as stock is available. Trucks using Basic Truck PT-1 are mounted to the car frames by means of Horseshoe Washers 480-18, while trucks using Basic Truck 479-1 are mounted to the cars by means of one of the Mounting Clips illustrated. The two types of trucks cannot be used interchangeably because of the difference in the diameter of the mounting holes in car frames. A special use of the Pivot Stud CP-58 is to hold Ground Washer 9T-16. Trucks equipped with this ground washer should be used on aluminum cars and other cars requiring good ground connection to the outside rails. A special use of Horseshoe Washer 480-18 is used on several crane cars. This truck is equipped with Pivot Stud 484-4 and Base Plate 480-25 will also be available as a unit.

BASE PLATE & COUPLER 480-25	BASE PLATE, COUPLER & SLIDE SHOE 483-2	BASE PLATE & ROLLER 482-3
RIVET 480-19	SHOE SPRING 6TC-12	RIVET 480-19
ARMATURE SPRING 480-38	EYELET 61-14	ROLLER ASSEMBLY 481-6
ARMATURE ASSEMBLY 480-4 or 480-42	SHOE PLATE TC-109	PIN 481-12
	SLIDING SHOE TT-208	ROLLER 481-11
	RIVET 480-20	RIVET TT-234
		SPRING TCL-45
		KNUCKLE 480-8
		KNUCKLE SPRING 480-16
		COUPLER ASSEMBLY 480-31
		KNUCKLE PIN TC-23

You won't need the rivet press if you get this tool.



Inquire about new Rivet Assortments.
Includes 10 of each Lionel rivet, 18 types per kit.
\$55.00 per kit + \$9.00 S&H

Rivet Tools also available, as shown.

**Describe parts by number, when possible, or send a sample for us to match.
Your sample will be returned to you with your order.**

TERMS AND CONDITIONS

- Minimum \$30.00 order, paid in advance – include \$9.00, (\$12.00 Canada), for shipping & handling, additional (total \$39.00). Make checks payable to David Laughridge and send with order. We have no open accounts. Sorry, no CODs or credit cards accepted. Prices are subject to change.
- If you do not know how much an item is, send a deposit for the estimated amount. Overpayments will be refunded with your order.
- If you want an order to be insured, send extra estimated funds.
- Parts listed are new, used, reconditioned, and reproduction, depending on availability at the time of the request. Parts that have been rerun at the factory are generally considered to be the same as new, original parts, if appropriate.
- Parts cannot be returned for credit, except by prior agreement. All sales are final. A restocking fee will be charged for all returned merchandise. Restocking fee is normally \$5.00 or 10% of the value of the returned item(s). Electrical units are tested before shipment. Damage resulting from shipment or improper installation is not sufficient reason for a return for credit.
- Some items are reconditioned, such as smoke units, armatures, and E-units. If this is objectionable to you, please indicate.
- Correctness and accuracy are of prime concern to us. Dr. Tinker® (Dave Laughridge) is a former Lionel Product Manager from the late 60's period and has been designing toys, repairing trains, and writing about his work most of his life. This is a full time business, not a part time hobby. We also use the parts that we sell to repair our own customers' trains, so you can be assured that what we ship to you is the best quality available. **Your satisfaction is our prime concern.**
- Send Self-Addressed Stamped Envelope for inquiries, please. Order by Lionel engine or accessory part number when possible.
- Quantities are limited on some items, especially new original old stock. If reproduction is acceptable, please advise.
- Please try to keep telephone calls to a minimum. To process your order, send a check or money order for \$39.00 minimum, and a written list of your needs. Sorry, no Credit Cards!
- Massachusetts dealers with tax numbers should send tax exempt form or a photocopy of your Sales Tax and Use Registration certificate for our files. Out-of-state customers do not pay Massachusetts sales tax.
- We have not increased prices generally in over ten years. We buy parts at auction and from primary manufacturers and pass the savings on to our customers. If any part seems overpriced, please let us know. Adjustments can be made, when appropriate.
- Sales are final for all books, circuit boards and electro-mechanical assemblies.
- Dealers ask for our list of Service Products.

ABBREVIATIONS

Br	= Brass
LIM	= Limited Quantities Available
LTIRR	= LTI Rerun
LTI	= Lionel Trains Inc.
M	= Mint Condition
N	= New
Ni	= Nickel
NOS	= New, Old Stock
O	= Factory Original, New
R	= Reproduction, Acceptable
RR	= Factory Rerun
SL	= Steam Locomotive
SO	= Special Order or Sold Out
TOS	= Temporarily Out of Stock
U	= Used, As Is, Original Part
WS	= Whistle Sound

NOTICE

**If you have access to a computer,
you can send the order via e-mail to:**

dave@drtinkertrains.com

**\$30.00 minimum for mailorders + S&H (9.00)
Send a deposit of \$39.00. We will advise on amount that is
due to you, or balance due to us.**

• 700E/763E MANUAL REPRO 25.00 + S&H 7.50 •

NOTE: PLEASE DO NOT COPY PARTS PRICE LIST. ASK FOR AN UPDATED NEW ONE.

This list becomes obsolete monthly as new parts become available and as old parts inventories are used up. If you have not ordered any parts for a few months, please reorder the parts list. It's free to active, regular customers, or you can download an updated list from our website—<http://www.drtinkertrains.com>

**SCREW & RIVET ASSORTMENTS:
\$55.00 – Plus Shipping (\$9.00)**

**ALSO – Reconditioned Transformers,
Trains, cars, accessories in limited supply.
Sorry, no list. Let us know what you need.**

**MANY INVENTORIED PARTS
ARE NOT ON THIS LIST**

If you don't see the items you need, please inquire, especially regarding pre-war replacement parts. Please send a SASE. Thank you.

Hal David Laughridge

Let Em' Smoke Again Boys!



SMOKE PELLETS

The New Solid Smoke Pellets work just as well as the old originals !!!

The original Lionel Corp. technology has been retained!

A super alternative to Liquid Conversions at

\$16⁹⁵ per bottle (50 pills per bottle)

Tell a friend about our website and free parts list when you download drinkertrains.com

SP-2
\$16.95
Per Bottle

Don Burbeck

LUBRIPLATE

Use **LUBRIPLATE** White Lithium Grease for pinions, gears, shafts, and axles. **\$7.00**

LUBRICATE BOTH ENDS OF THIS SHAFT

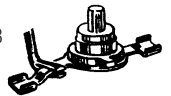
\$20.00



ST-302 SPRING ADJUSTING TOOL

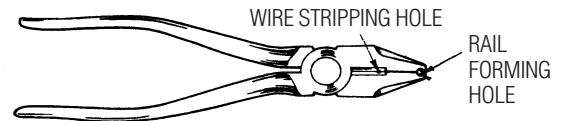
A doubled-ended slotted tool specially designed to adjust hard-to-reach flat springs or contacts on trucks, transformers, controller and other Lionel equipment. The slotted blades are of special alloy steel carefully machined and tempered to eliminate breakage in any normal use.

FOR ADJUSTING TENSION ON NO. 1033 TRANSFORMER WHISTLE CONTROLLER



Pin Crimping Track Pliers New Production \$40.00 + Shipping

ST-384 TRACK PLIERS For "0" and "027" Track + Std Ga



Supply is limited.

Press In Truck mtg. studs for plastic trucks

Press In Truck mtg. studs for die-cast sprung trucks

TPS-MFS

TPS-DCTS

9550-50

All Pivot Studs .60 ea

Extra Long Studs For Cars With Plastic Frames

TPS-PFL

TPS-DCTL

1666-T5 HANDRAIL 2.00

700E-70 STANCHION OR USE 1666E-11 COTTER PINS

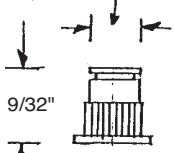
1666T-LL BODY REPRO \$35.00 EA LIMITED SUPPLY

Truck Pivot Studs

Mount Plastic Trucks with horseshoe Clips!

#TPS-MFS

3/16"



4 TYPES AVAILABLE

9/32" 60¢ ea.

Metal stud to mount post-war and MPC plastic trucks to metal frames. Also longer versions available for cars with plastic frames and for cars with diecast trucks

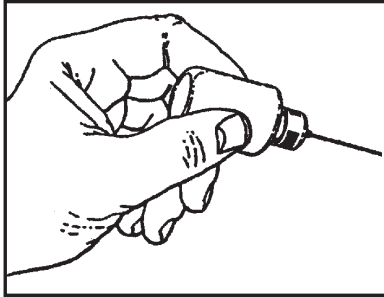
Exclusive Needle Dispenser!

multi-purpose

OIL \$9.50 Bottle

LaBelle or Turbo

Specify w/ or w/out dispenser



plastic compatible
net vol. 1/2 fl. oz.

SEASHORE TROLLEY MUSEUM



Please tell your friends about the SEASHORE TROLLEY MUSEUM

195 Log Cabin Road, P.O. Box A

Kennebunkport, ME 04046-1690

(207) 967-2712

Please visit our website at:

www.trolley-museum.org



NOTE:

ALL US MADE BULBS ARE NOW \$1.00 ea

www.dr-tinkertrains.com

#1019-0

4 oz Bottle

@ \$12.00 ea

Dr. Tinker

Rust Dissolver

Mild but Effective!

Dr. Tinker® Repairs Toy Trains

by David Laughridge

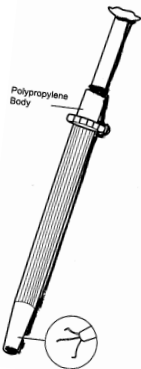
Hints/Commentary
Supply is Limited

Volume I: Black & White \$20.00 plus \$9.00 shipping

Volume II: \$20.00 plus \$9.00 shipping and handling. Personalized copy makes excellent gift!

A compendium of articles from OGR Magazine

Make checks payable to:
David Laughridge
P.O. Box 242
Lexington, MA 02420-0003



Screw Positioner

\$6.95 +S&H

#1110-SH

4.75" Long Appx

ø 0.4m/m Piano wire

SUPPLY IS LIMITED

MOTORBRUSH & SPRING ASSORTMENT

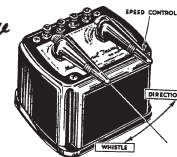
\$65⁰⁰
plus shipping



Ask for list

Did You Know

Lionel Transformer Instruction Sheets (reproduction) are available at \$2.00 each when accompanied by an LSSAE from Dr. Tinker Give Transformer Number when ordering.



Get Your Next Updated PRICE LIST Off The Web

Prewar + Postwar Lionel Spring Assortments

75 Types plus, New for 2019, Best Value, Ask for List.

Special Offer:

\$75⁰⁰ plus \$9⁰⁰ S&H
While They Last

Contents
Page 1-3
Commentary
Dear Dr. Tinker
Dr. Tinker's Hints
General Announcements
For Sale

Volume III, No. 4
July, 1999
Price \$3.50



Dr. Tinker's THE COUPLER

A bimonthly publication

Contents
Page 1-3
Commentary
Dear Dr. Tinker
Dr. Tinker's Hints
New Products
Poems
For Sale

Volume II, No. 6
November, 1998
Price \$3.50



Dr. Tinker's THE COUPLER

A bimonthly publication

Merry Christmas

Couple up with the best in "O" Gauge Modeling

Commentary

ZW's at Discount
A very respected friend and that it's not a good idea to have a large inventory of ZW's for sale these days. He noted that these fine pieces produced prior to 1970 were not selling at the shows. Obviously, this is a result of the influx of new, heavy duty ZW MTW. It's a true that of late, we have not seen many of these in the shop to rebuild for customers.

"new" when it comes to transformers. But over the years, the Lionel transformers used to be used, rebuilt, and used again, regardless of price. No matter how many new transformers appeared, the old ones continued to hold their own. And now, after faithfully serving us for many years, they suddenly forgot the old for a minute. We have seen new products come and go, mate that as many as 75 percent of the larger operating fact that the ZW's are so reliable suggests they will continue to be used, well into the future.

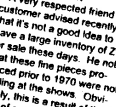
Examples of the new products will likely be kept on hand for test purposes, naturally. The 16 clearly upon us, and it's a super time to be into model trains. But our hunch is that some things may not change to come, especially in the area of Lionel Corporation transformers.

Clock Work Interest

As many of us find more time to enjoy our hobby, disassembling old trains and so forth, an unexpected surprise awaits us in the realm of

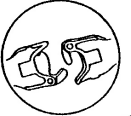
Dear Dr. Tinker

Dear Dr. Tinker,
My friend asks any repair part he buys that is not that rusty or cruddy, a repro part, unless it is made directly from Lionel or not? My feeling is that if you have in his understanding of reproduction replacement parts. What's your read on this here. Keep up the good work. Almost no one...



Contents
Page 1-3
Commentary
Dear Dr. Tinker
Dr. Tinker's Hints
New Products
For Sale

Volume III, No. 2
March, 1999
Price \$3.50



Dr. Tinker's THE COUPLER

A bimonthly publication

Couple up with the best in "O" Gauge Modeling

Commentary

How Long to Fix?
Because of its appropriateness, for our time, when MTW's are produced the Amtrak F-40PH that engine just had to be a "must have" item. We bought two and also purchased a "T" version, with the purple stripe, on our local rails, daily. It's very nice to see models of real contemporary trains in the train shops. Kids especially can identify with models

point, but, of course, some train manufacturers' get it. The MTW, or Talking F-40PH we purchased, and promptly jumped the track, or received a voltage "spike" a few days after purchase and we gave this fine gent a replacement, and sent the faulty one back to Lionel's inside in horror.

is the one reason that one would hesitate to send a piece like this back to the factory. At this point, we risk has to ask, should we risk sending this piece back to the factory, or should we, again, consider fixing it ourselves? I might get it working order, but then it might not, and it might come back with something else wrong with it. What a dilemma! Discussing this with some others who have done, we finally concluded before, we finally concluded that we might invest some time in analysis, to see what

Dear Dr. Tinker

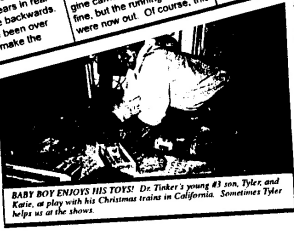
Dear Dr. Tinker,
As I browse through some old Lionel books, I notice that some steam engines have names associated with them. I read looking up my two Lionel engines, #2035 and #2018, and no mention of a name or style was made. By name, I mean Barkshire or Ballou's names, or manufacturer's names, or initials based on anything recognizable? An answer, at your convenience, would be appreciated. Thanks in advance.
Fitchburg, MA

Dear Pat,
A Barkshire has a driver on it. (Continued on page 4)



Feeling Dr. Tinker gives some advice from the Lionel archives with the 1948 Christmas F-37. Photo courtesy of Pat Barkshire.

of them that they see on occasion. Having an electric train that represents a train that really exists, makes sense to most folks, whereas modern run for years in real life seems a little backwards. Guess we have been over this enough to make the



BABY BOY ENJOYS HIS TOYS: Dr. Tinker's young #1 son, Tyler and Katie, at play with his Christmas train in California. Sometimes Tyler helps at the shows.

Couple up with the best in

h better and was more. This fact, of course, mated not to the counter minds that the power in those it's a common affliction of the Detroit area, you'll, if you don't. I just take a look at Jevy did to their best the basic Chevy 4-lan in the recent auction. Then, look the contrast in appearance is swayed so subtle, sharp pencil boys a product, it is in design and suffer naively think mers won't rance in the version vs. -ment, often preferable, concept version. But that's another subject. Anyway, apparently the MFC Geeps looked funny with the two-step pilots, so someone decided that it would look a little better with the frame flipped over, so the frame skirt was turned down and filled the visual gap between the truck and the bottom of the engine. This changed Lionel Geeps forever and, to this day, most of us frown on the modification, once we see the differences in

Contents
Page 1-3
Commentary
Dear Dr. Tinker
Dr. Tinker's Hints
General Announcements
New Products
For Sale

Volume III, No. 5
September, 1999
Price \$3.50



Commentary

The Fourth Car
We came close to matching the beautiful green colors on the AF prewar "O" Gauge passenger cars. But when the three cars were done, the owner sent the fourth car that he had held back because it did not need to be repainted. This points up the need to take some time, early on, to discuss the job, before jumping

ors that were found on the fourth car. The fact that the three cars had to be stripped and redone, in order to approach a two-step match, a second time leaves one fairly exasperated. The lesson here is to remember to get all the facts before going ahead with a project of this magnitude.

Use the Book
We returned from the September New England TCA train meet with mixed emotions about the general status of the hobby. We had the usual number of confused questions from members asking for parts but who were not willing to supply the data. Our usual response to that segment of the attendees goes along the lines that "we can't help you if you can't help us identify what you want".

Many screws are easily identified simply by looking in the Repair Manual for the part numbers. This type of investigation takes almost no effort. For instance, if someone wants a rear truck screw for a #2037 steamer, we don't hesitate to ask the customer for the part number because we want to be sure to give him the right part, first of all. The person may, and usually does, say they don't know the number. So in this case, we open up the book to the pages that show the include cleaning and checking for loose track pins? Your advice will be regarded as the last word. Your opinion, when it comes to the train, is most reliable, we understand.
B.R.
Seattle, WA
(Continued on page 4)

Dear Dr. Tinker

Dear Dr. Tinker,
We are once again thinking about setting up our trains for Christmas. As always, we will ponder whether to buy new track sections or use the old ones for one more season. This year my wife said perhaps we should get a second opinion on what to do.
Do you have any suggestions, other than the usual hints which include cleaning and checking for loose track pins? Your advice will be regarded as the last word. Your opinion, when it comes to the train, is most reliable, we understand.
B.R.
Seattle, WA
(Continued on page 4)



Another typical day on the job, with the small persimmon in hand. Actually, this photo was taken at a train show. The folks at Greenberg have graciously accommodated Dr. Tinker by providing a table so we can help folks get small repairs made at the shows. Photo courtesy of Al Moore.

Repair Hints - Very Limited Supply
and commentary for
Lionel Prewar & Postwar
Repairmen, WHILE THEY LAST!

