

How to directly access the video stream of Edimax camera

This article can apply on Edimax IC-7010PTn series and IC-3030 series.

Introduction

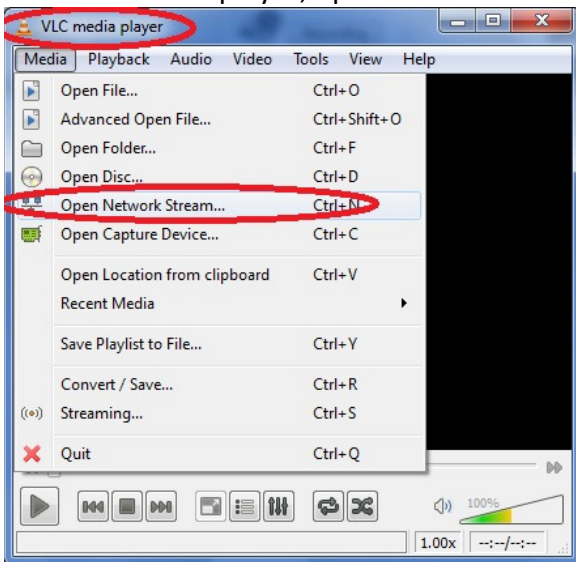
You may access the video stream of Edimax Camera directly.

Solution

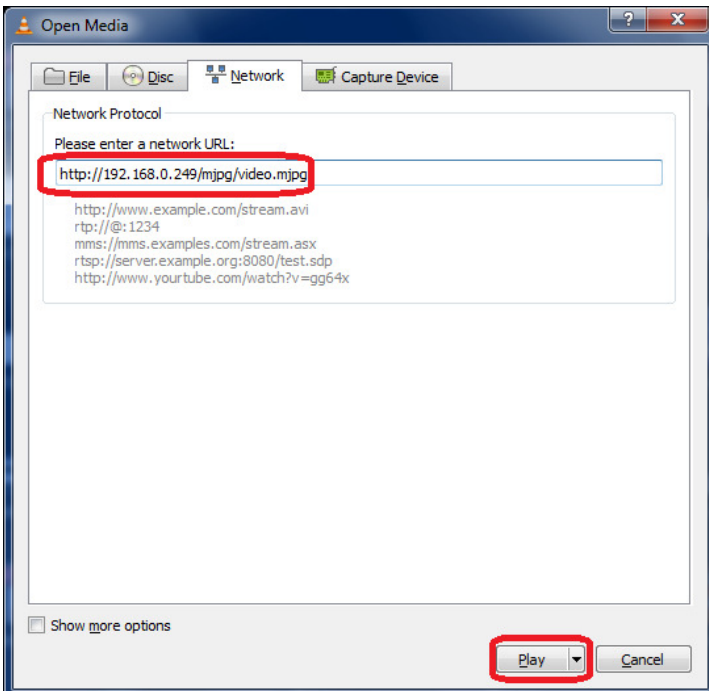
The video stream can be accessed at <http://ip-address-of-Camera/mjpg/video.mjpg>.

Example by using VLC media player

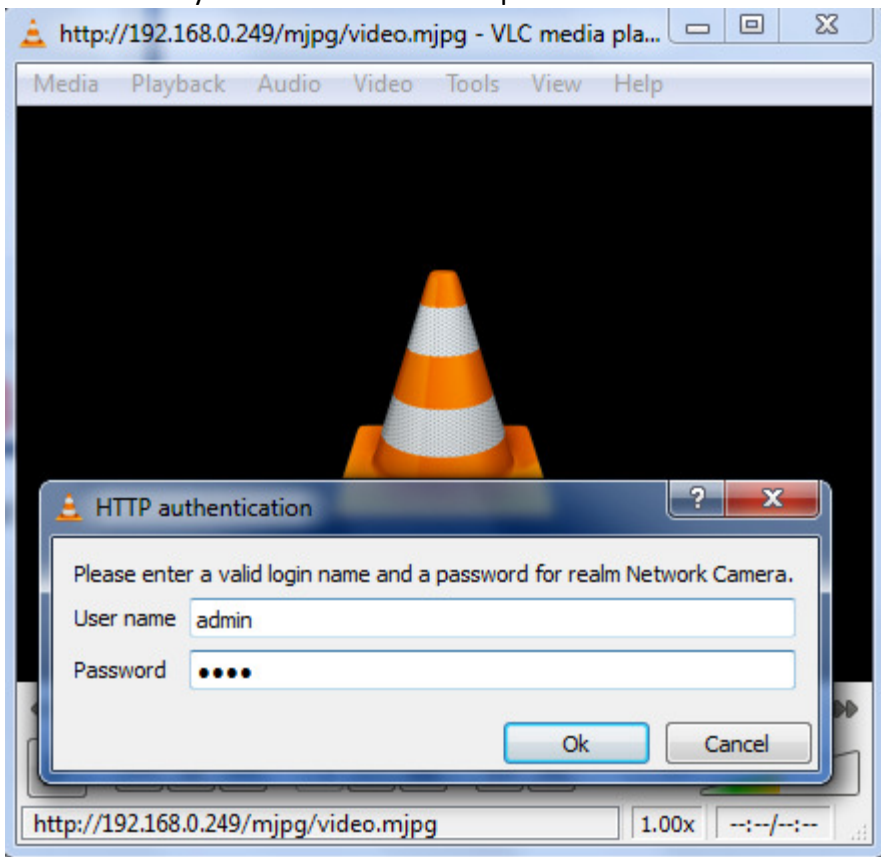
1. In VLC media player, open Network Stream.



2. Enter the IP address of the Camera. It can be a local IP address of the camera or a public IP address of your network.



3. Click on Play. Enter username and password to access the Camera.



4. View the video stream.

