

# An updated checklist of spiders (Araneae) of the Faroe Islands

JØRGEN LISSNER, JENS-KJELD JENSEN, LEIVUR JANUS HANSEN, WILLIAM SIMONSEN, RODMUND Á KELDUNI & KAJ NISSEN

Lissner, J., Jensen, J.-K., Hansen, L.J., Simonsen, W., Kelduni, R. & Nissen, K. 2016. An updated checklist of spiders (Araneae) of the Faroe Islands. *Norwegian Journal of Entomology* 63, 197–240.

This study updates the previous checklist of Faroese spiders published in 2004. Fifteen species are added to the list: *Amaurobius fenestralis* (Ström, 1768), *A. similis* (Blackwall, 1861), *Zygiella x-notata* (Clerck, 1757), *Allomengea scopigera* (Grube, 1859), *Baryphyma trifrons* (O. P.-Cambridge, 1863), *Erigone dentigera* O. P.-Cambridge, 1874, *E. whymperi* O. P.-Cambridge, 1877, *Halorates reprobus* (O. P.-Cambridge, 1879), *Microlinyphia pusilla* (Sundevall, 1830), *Porrhomma campbelli* F.O.P.-Cambridge, 1894, *P. pallidum* Jackson, 1913, *Silometopus ambiguus* (O. P.-Cambridge, 1905), *Psilochorus simoni* (Berland, 1911), *Tetragnatha extensa* (Linnaeus, 1758), and *Parasteatoda tepidariorum* (C.L. Koch, 1841). Nine species are deleted from the checklist. While *Araneus diadematus* Clerck, 1757, *A. quadratus* Clerck, 1757, and *Nuctenea umbratica* (Clerck, 1757) have been repeatedly introduced to the Faroes they have failed to establish and are deleted. *Crustulina guttata* (Wider, 1834) and *Walckenaeria obtusa* Blackwall, 1836 are considered accidental imports unable to breed in the islands and are also deleted. *Boleophthiphantes index* (Thorell, 1856) and *Tmeticus affinis* (Blackwall, 1855) are assumed erroneously reported from the islands and are deleted from the list along with *Agyneta ramosa* Jackson, 1912 and *Ozyptila atomaria* (Panzer, 1801) which were found to be misidentified upon re-examination of museum specimens. The status of *Porrhomma egeria* Simon, 1884 in the Faroes is uncertain and is maintained on the list. At least 114 spider species have been recorded in the Faroes, however only 90 meet the criteria of the checklist.

Key words: Spiders, Araneae, checklist, Faroe Islands.

Jørgen Lissner, Natural History Museum Aarhus, Wilhelm Meyers Allé 210, Universitetsparken, 8000 Aarhus C, Denmark. E-mail: lissner@nathist.dk

Jens-Kjeld Jensen, Í Geilini 37, FO-270 Nólsoy, Faroe Islands. E-mail: jkjensen@olivant.fo

Leivur Janus Hansen, Museum of Natural History, Søvni Landsins, Kúrdalsvegur 15, FO-188 Hoyvík, Faroe Islands. E-mail: janush@savn.fo

William Simonsen, Blómubrekka 54, FO-100 Tórshavn, Faroe Islands. E-mail: simonsen.william@gmail.com

Rodmund á Kelduni, á Kelduni 3, FO-380 Sørvágur, Faroe Islands. E-mail: rkfussie@gmail.com

Kaj Nissen, Beltoftsgade 2, 9500 Hobro, Denmark. E-mail: kaj.nissen@outlook.dk

## Introduction

The Faroe Islands consist of 18 practically treeless volcanic islands situated in the North-East Atlantic

Sea between 61°20' and 62°24' N and between 6°15' and 7°41' W. The islands range in size from 0.8 km<sup>2</sup> (Lítla Dímun) to 374 km<sup>2</sup> (Streymoy) and totals 1399 km<sup>2</sup>. The highest mountain

peak (Slættaratindur) reaches 882 m a.s.l. The distance from north to south is 113 km and from east to west is 75 km. The nearest neighbour, the Shetland Islands, is situated 345 km to the southeast. The islands are separated by narrow sounds forming part of the warm North Atlantic Current. The climate is oceanic with mild winters and cool summers. The annual mean temperature is 7°C and the annual mean lowland precipitation amounts to 1,500 mm. The Faroese vegetation is relatively uniform and difficult to classify into plant communities. The outfield vegetation is dominated by grasslands and heaths being replaced by sparse alpine vegetation at higher elevations. Infield vegetation consists of lush grass vegetation or crop fields. Bogs cover only 1.4 % of the total area and are dominated by *Sphagnum* spp. and include blanket bogs and ombrogenous bogs (Fosaa 2009). Rich fens dominated by sedges and grasses are found in the lowland. The coast is mostly rocky but at some places, sand beaches and salt affected shore meadows are found. Sand dunes are well developed only at one site on Sandoy. The spider fauna of the Faroe Islands is relatively poor compared to Norway and Scotland, but compares to other isolated areas in the region such as Iceland with 84 species (Bengtson & Hauge 2007) and Greenland with 75 species (Marusik 2015). The main factors behind the low diversity presumably include the isolated position of the islands, the relatively short time elapsed since last glaciation, and the prevailing oceanic climate with cool summers.

The aim of this study is to update the checklist of the spiders of the Faroe Islands. The new checklist is based on a critically evaluation of preceding publications (numbered [1]–[13] below), unpublished material collected by the Faroese Museum of Natural History (Leivur Janus Hansen, William Simonsen) [14] and specimens mostly collected by the remaining authors [15]. The publications are listed in chronological order providing an historic account of the spider surveys undertaken in the Faroe Islands during the last 235 years.

[1]: The earliest records of spider species of the Faroe Islands are included in “Indberetninger fra en Reise i Færøe 1781 og 1782” [Reports from

a journey to the Faroes in 1781–1782] (Svabo 1959). Svabo undertook his journey to the Faroe Islands supported by royal funds with the aim to produce a physical and an economical account of the country. His report was submitted in 1783, but it was not printed until 1924 (reprinted in 1959). Two, synanthropic spider species, are mentioned in his chapter on insects, shellfish, worms and molluscs: *Aranea bipunctata* (= *Steatoda bipunctata* (Linnaeus, 1758)) and *Aranea domestica* (= *Eratigena domestica* (Clerck, 1757)).

[2]: Forsøg til en Beskrivelse over Færøerne [An attempt to describe the Faroe Islands] by Landt (1800). This publication contains accounts of the nature, climate, together with the manners and customs of the inhabitants, their productions, trade etc. Jørgen Landt took over a position as clergyman in the Faroes Islands in 1791, but he also undertook the part to collect specimens for the Danish Society of Natural History (Det Naturhistoriske Selskab) during his seven-year long stay. In his chapter on insects, *Aranea bipunctata* is reported for the second time. It is noteworthy that this species, although mentioned in these two earliest and very brief publications on Faroese spiders, was not found again here until it was rediscovered in 1999. Also noteworthy is that spiders are termed “Spinnilvevur” (meaning spiderweb) in both publications, not “eiturkoppur” (spiders).

[3]: The third account on the Faroe spider fauna is published in “Liste des Arachnides recueillis en 1892 par M. Gaston Buchet dans la presqu’île N.-O. de l’Islande” [List of Arachnids collected in 1892 by Gaston Buchet in the NW peninsula of Iceland] (Simon 1898). Despite the title, this study apparently contains material from the Faroe Islands as some Faroese localities (Klaksvík, Tórshavn, and Trongisvágur) are indiscriminately mentioned among Iceland localities. Simon identified just two species of this material, both of which never have been found again in the Faroes, *Bolephthyphantes index* (Thorell, 1856) and *Tmeticus affinis* (Blackwall, 1855). The specimens of Gaston Buchet could not be located in the collections of National Museum of Natural History, Paris. The number of species cited from the Faroes now counts to four.

[4]: The next account on Faroese spiders is found in "Danmarks, Færøernes og Islands edderkopper med undtagelse af Theridierne" [The spiders of Denmark, Faroe Islands and Iceland, Theridiids excepted] (Sørensen 1904). The short treatise on Faroese spiders is based on seven specimens collected by district medical officer named as A. Bergh. Possibly this is Adolph Frederik August Berg who was a medical officer and who's two children were born on Suðuroy. Four spider species were added to the Faroese fauna: *Pardosa palustris* (Linnaeus, 1758), *Pirata piraticus* (Clerck, 1757), *Metellina merianae* (Scopoli, 1763), and *Xysticus cristatus* (Clerck, 1757). The records are without date and locality but Sørensen assumes that all specimens were collected on Suðuroy. Eight species have now been cited from the Faroes.

[5]: The fifth study includes spiders collected in 1910 and is published in "Arachnides (Araneae et Opiliones) (Lessert 1913) In: Über die Insekten- und Spinnenfauna Islands und der Faeröer by Klinckowström. According to Holm (1980), Klinckowström collected 72 specimens in Suðuroy out of a total of 246 specimens collected in Iceland and the Faroes. This material is stored in Stockholm. However, only three identified specimens are mentioned in this study, *Robertus lividus* (Blackwall, 1836) from Trongisvágur and Lopra (first Faroese records) and *Pardosa palustris*, now reported for the second time in the Faroes from Trongisvágur. This material is also included in Holm (1980) who identified more specimens of this material. The number of spider species cited from the Faroes rose to nine with this study.

[6]: The first more detailed investigation of the Faroese spider fauna is found in "Fauna Færøensis. Araneina" (Schenkel 1925). In this publication, 31 species were identified from a sample of about 500 specimens collected by the entomologists Alfons Dampf and Kurt v. Rosen in 1912. The material was identified by the Swiss arachnologist Ehrenfried Schenkel in Basel and published in 1925. Twenty-six species were recorded for the first time in the Faroes: *Haplodrassus signifer* (C.L. Koch, 1839), *Robertus arundineti* (O. P.-Cambridge, 1871), *Ceratinella brevipes*

(Westring, 1851), *Diplocephalus cristatus* (Blackwall, 1833), *Savignia frontata* Blackwall, 1833, *Walckenaeria nudipalpis* (Westring, 1851), *W. obtusa* Blackwall, 1836, *Gonatium rubens* (Blackwall, 1833), *Erigone psychrophila* Thorell, 1871, *E. arctica* (White, 1852), *Collinsia holmgreni* (Thorell, 1871) (published as *Coryphaeus mendicus* (L. Koch)), *Oreoneta frigida* (Thorell, 1872) (published as *Hilaira faeroica* n. sp.), *Porrhomma convexum* (Westring, 1851), *Centromerita bicolor* (Blackwall, 1833), *Oreonetides vaginatus* (Thorell, 1872) (published as *Macrargus adipatus* (L. Koch)), *Saaristoa abnormis* (Blackwall, 1841), *Leptorhoptrum robustum* (Westring, 1851), *Agyneta nigripes* (Simon, 1884), *Poecilonea variegata* (Blackwall, 1841), *Lepthyphantes leprosus* (Ohlert, 1865), *Tenuiphantes zimmermanni* (Bertkau, 1890), *Bolyphantes luteolus* (Blackwall, 1833), *Clubiona trivialis* C. L. Koch, 1843, *Iberina montana* (Blackwall, 1841), *Trochosa terricola* Thorell, 1856, *Pardosa trailli* (O. P.-Cambridge, 1873) (as *P. eiseni* Thorell, 1875). Four species have not been found since, *Walckenaeria obtusa*, *Pardosa trailli*, *Robertus arundineti*, and *Iberina montana*. The material could not be located in Basel (Ambros Hänggi, personal communication). The number of spider species cited from the Faroes is now 35.

[7]: Brændegård (1928) presents data from collections made by Danish zoologists in 1925–26 in "The Zoology of the Faroes: Araneina". About 700 adult spiders were identified belonging to 29 different species. Nine species were new to the fauna: *Mecynargus morulus* (O. P.-Cambridge, 1873) (published as *Trichopterna globipes* L. Koch), *Tiso vagans* (Blackwall, 1834), *Walckenaeria cuspidata* Blackwall, 1833, *Erigone atra* Blackwall, 1833, *Erigone promiscua* (O. P.-Cambridge, 1873), *Porrhomma montanum* Jackson, 1913, *Tenuiphantes tenuis* (Blackwall, 1852), *Palliduphantes ericaeus* (Blackwall, 1853), and *Pardosa sphagnicola* (Dahl, 1908). This study also reports the rare golden banded variety of *Metellina merianae* (Scopoli, 1763) for the first time. This author counts 43 Faroese species but is unaware of the early records of *Steatoda bipunctata* in [1] & [2] and the actual number is

44. The material of Brændegård is stored in the Zoological Museum of Copenhagen.

[8]: A large study “Terrestrial Invertebrates of the Faroe Islands: I. Spiders (Araneae): Checklist, distribution, and habitats” was published by Bengtson & Hauge (1979). Among 3678 spiders collected 1591 adult spiders were identified. Seven species had not previously been recorded in the Faroes: *Ozyptila trux* (Blackwall, 1846), *Walckenaeria nodosa* O. P.-Cambridge, 1873, *Centromerus dilutus* (O. P.-Cambridge, 1875), *Drepanotyulus uncatulus* (O. P.-Cambridge, 1873), *Porrhomma egeria* Simon, 1884, *Bathyphantes gracilis* (Blackwall, 1841), and *Tenuiphantes mengei* (Kulczynski, 1887). The total number of species cited from the Faroes now counts to 51. The authors themselves cite 67 species, having also included the spiders recorded as new to the Faroes in study [9]. The authors of both studies were unaware of the early citing of *Steatoda bipunctata* of studies [1] and [2], thus the correct number is 68.

[9]: The Swedish arachnologist Åke Holm visited the Faroes in the summer of 1966. He collected 1472 specimens and published his data in “Spiders (Araneae) from the Faroes” (Holm 1980). This author also includes 72 specimens collected by Klinckowström [5] in his publication. The following 17 species are added to the Faroese checklist: *Alopecosa pulverulenta* (Clerck, 1757), *Scotinotylus evansi* (O. P.-Cambridge, 1894), *Diplocentria bidentata* (Emerton, 1882), *Diplocephalus permixtus* (O. P.-Cambridge, 1871), *Entelecara errata* O. P.-Cambridge, 1913, *Erigone tirolensis* L. Koch, 1872, *Gongyliidium vivum* (O. P.-Cambridge, 1875), *Hilaira nubigena* Hull, 1911, *Semljicola faustus* (O. P.-Cambridge, 1900), *Monocephalus fuscipes* (Blackwall, 1836), *Tiso aestivus* (L. Koch, 1872), *Walckenaeria antica* (Wider, 1834), *W. clavicornis* (Emerton, 1882), *Agyneta decora* (O. P.-Cambridge, 1871), *Centromerita concinna* (Thorell, 1875), *Centromerus arcanus* (O. P.-Cambridge, 1873), and *Improphantes complicatus* (Emerton, 1882). This author also reports *Poecilometes variegata* as new but it was already published (Schenkel 1925) [6]. Note that some records published by Holm (1980) were listed in Ashmole (1979) as

unpublished records and cited in [8] before they were published by Holm. With the publication of Holm, 68 species have been cited from the Faroes.

[10]: The first published record of the daddy long-legs spider, *Pholcus phalangioides* Fuesslin, 1775 from a kindergarten in Saltangará, Eysturoy appears in “*Pholcus phalangioides* (Fuesslin, 1775) (Araneae, Pholcidae) first record from the Faroe Islands” (Hauge et al. 2002). Now 69 species have been cited from the Faroes.

[11]: The first record of *Uloborus plumipes* Lucas, 1846 was published in “Two introduced species of spiders (Araneae) new to Norway and the first record of *Uloborus plumipes* Lucas (Uloboridae) from the Faroes” (Aakra & Olsen 2003). A single specimen was found at the flower shop Blómuhandilin Fípan, Tórshavn, 5 August 2000, bringing the total number of species cited from the Faroes to 70.

[12]: *Nuctenea umbratica* (Clerck, 1757) is reported for the first time in the paper “Nýggjur eiturkoppur funnin í Føroyum” (Magnussen 2003). The species was confusingly reported as “*Larinioides umbratica*” and published with an image of *Larinioides scolopetarius* (Clerck, 1757). However, the specimen was forwarded to Erling Hauge, University Museum of Bergen, who identified it as *Nuctenea umbratica* (Bengtson et al. 2004). With this publication, 71 species have been cited from the Faroes.

[13]: The hitherto largest study of the Faroese spiders was published in “Spiders (Araneae) in the Faroe Islands: an annotated checklist and an update on inter-island distributions” (Bengtson et al. 2004). 10,010 adult specimens belonging to 67 species were identified, including first records of ten species: *Crustulina guttata* (Wider, 1834), *Agyneta gulosa* (L. Koch, 1869), *A. ramosa* Jackson, 1912, *A. subtilis* (O. P.-Cambridge, 1863), *Centromerus prudens* (O. P.-Cambridge, 1873), *Hypomma bituberculatum* (Wider, 1834), *Mughiphantes whymperi* (F. O. P.-Cambridge, 1894), *Ostearius melanopygius* (O. P.-Cambridge, 1879), *Arctosa alpigena* (Doleschall, 1852), and *Ozyptila atomaria* (Panzer, 1801). An additional three species were collected indoors are reported for the first time: *Araneus diadematus* Clerck, 1757, *A. quadratus* Clerck, 1757, and *Eratigena*

*atrica* (C. L. Koch, 1843) and the current total number of species cited from the Faroes counts to 84.

## Material and methods

Specimens were collected by pitfall traps set by the Faroese Museum of Natural History or by hand only by private collectors (Jens-Kjeld-Jensen, Jørgen Lissner, Rodmund á Kelduni and others). Position and elevation of each locality were recorded using a Garmin GPSmap 60CSx for spiders collected by the first author. The website Kortal.fo (2016) was used to assign place names, elevation and coordinates to records not collected by the first author. Illustrations were created from photos of selected features using a Leica Wild M10 stereomicroscope fitted with Leica DFC425 digital camera connected to a computer with Leica Application Suite software v. 4.3.0, Zerene Stacker software v. 1.04 and the vector graphics editor Inkscape v. 0.48.

**Abbreviations.** CJL: Collection Jørgen Lissner; FMNH: Faroese Museum of Natural History.

## Results

### *New material*

[14]: Spider collection of the FMNH from pitfall sampling in 2008, 2009 and 2012 by William Simonsen. Traps were set in Eysturoy (Eiði, Hólmurin, St. 2-4, and Lake Toftavatn, St. 1- 6), Skúvoy (Byrgisbakki, infield, outfield, Knútur, and shore) and Streymoy (Skeiðsá at Sjúrdarstíggjur) as well as several sites in Tórshavn (Lyngøki, Mýrilendi, City Park, Sanatoriivegur, undir Glaðsheyggi, Hoydalsá, við Strond, and Ternuryggur). Detailed information on localities is given in the section with specific comments on each species. A total of 1560 specimens were identified in this material by the first author. Two species are new to the Faroese fauna, *Porrhomma campbelli* F. O. P.-Cambridge, 1894 and *Erigone dentigera* O. P.-Cambridge, 1874.

[15]: Private collection of Jørgen Lissner

consisting of 1543 identified specimens. The majority of specimens were collected by Jens-Kjeld Jensen, Rodmund á Kelduni, Jørgen Lissner, Dánial Jespersen and Kaj Nissen. Various residents of the Faroes have collected mostly single specimens, usually in or near human habitations, and forwarded this material to the authors for identification. Thirteen species are added to the checklist: *Amaurobius fenestralis* (Ström, 1768), *Amaurobius similis* (Blackwall, 1861), *Zygiella x-notata* (Clerck, 1757), *Allomengea scopigera* (Grube, 1859), *Baryphyma trifrons* (O. P.-Cambridge, 1863), *Erigone whymperi* O. P.-Cambridge, 1877, *Halorates reprobus* (O. P.-Cambridge, 1879), *Microlinyphia pusilla* (Sundevall, 1830), *Porrhomma pallidum* Jackson, 1913, *Silometopus ambiguus* (O. P.-Cambridge, 1905), *Psilochorus simoni* (Berland, 1911), *Tetragnatha extensa* (Linnaeus, 1758), and *Parasteatoda tepidariorum* (C. L. Koch, 1841). In addition a number of species considered accidental imports have been identified in this material: *Araniella cucurbitina* (Clerck, 1757), *Cyclosa conica* (Pallas, 1772), *Larinioides scolopetarius* (Clerck, 1757), *Larinioides ixobolus* (Thorell, 1873), *Cheiracanthium erraticum* (Walckenaer, 1802), *Neriene montana* (Clerck, 1757), *Hasarius adansoni* (Audouin, 1826), *Marpissa muscosa* (Clerck, 1757), *Salticus scenicus* (Clerck, 1757), *Enoplognatha ovata* (Clerck, 1757), *Evarcha jucunda* (Lucas, 1846), *Icius subinermis* Simon, 1937, *Philaeus chrysoops* (Poda, 1761), and *Steatoda paykulliana* (Walckenaer, 1805). The number of spider species collected in the Faroes now counts to 113, not including an unidentifiable, juvenile *Philodromus* species.

### *Updated checklist*

The criteria for listing are 1) species with confirmed breeding in the Faroe Islands (natural or man-made habitats), 2) if breeding is not confirmed, then only species that have been found in their natural habitats and for which the known geographical distribution outside the Faroe Islands indicate that breeding could take place in the Faroes.

Spider species that represent new records to the Faroe Islands are marked with an asterisk



preceding the species name. Following the checklist is a list of species deleted from the previous checklist of Bengtson *et al.* (2004). The reasons for deletions are stated in the “Specific comments on species” section. Finally, a list of species omitted from the checklist is presented. Most species on this list are considered accidental imports unable to breed in the Faroes, but a few may in time establish in the Faroes. Until evidence of breeding becomes available these species are listed separately from the checklist. Numbers in brackets refer to the particular studies with records. Authors of the studies [6]–[9] were unaware of the presence of two Faroese species of *Centromerita* and their records may thus represent either one or both species. The records listed in these studies have not been used to map the distribution of *Centromerita* species. The studies in question are marked in italics.

#### AGELENIDAE

- Eratigena atrica* (C. L. Koch, 1843): [13] [15].  
*Tegenaria domestica* (Clerck, 1757): [1] [6] [7] [9] [13] [14] [15].

#### AMAUROBIIDAE

- \* *Amaurobius fenestralis* (Ström, 1768): [15].  
\* *Amaurobius similis* (Blackwall, 1861): [15].

#### ARANEIDAE

- \* *Zygiella x-notata* (Clerck, 1757): [15].

#### CLUBIONIDAE

- Clubiona trivialis* C. L. Koch, 1843: [6] [7] [9] [14] [15].

#### GNAPHOSIDAE

- Haplodrassus signifer* (C.L. Koch, 1839): [6] [8] [15].

#### HAHNIIDAE

- Iberina montana* (Blackwall, 1841): [6].

#### LINYPHIIDAE

- Agyneta decora* (O. P.-Cambridge, 1871): [8] [9] [13] [14] [15].  
*Agyneta gulosa* (L. Koch, 1869): [13] [15].  
*Agyneta nigripes* (Simon, 1884): [6] [7] [8] [9] [13] [15].

- Agyneta subtilis* (O. P.-Cambridge, 1863): [13].  
\* *Allomengea scopigera* (Grube, 1859): [14] [15].  
\* *Baryphyma trifrons* (O. P.-Cambridge, 1863): [15].  
*Bathyphantes gracilis* (Blackwall, 1841): [8] [14] [15].  
*Bolyphantes luteolus* (Blackwall, 1833): [6] [7] [8] [9] [13] [14] [15].  
*Centromerita bicolor* (Blackwall, 1833): [6] [7] [8] [13] [14] [15].  
*Centromerita concinna* (Thorell, 1875): [9] [13] [14] [15].  
*Centromerus arcanus* (O. P.-Cambridge, 1873): [8] [9] [13] [14] [15].  
*Centromerus dilutus* (O. P.-Cambridge, 1875): [8] [14].  
*Centromerus prudens* (O. P.-Cambridge, 1873): [13] [14] [15].  
*Ceratinella brevipes* (Westring, 1851): [6] [8] [9] [13] [15].  
*Collinsia holmgreni* (Thorell, 1871): [6] [7] [9] [13] [15].  
*Diplocentria bidentata* (Emerton, 1882): [8] [9] [13] [14] [15].  
*Diplocephalus cristatus* (Blackwall, 1833): [6] [7] [8] [9] [13] [14] [15].  
*Diplocephalus permixtus* (O. P.-Cambridge, 1871): [8] [9] [13] [14] [15].  
*Drepanotylus uncatus* (O. P.-Cambridge, 1873): [8] [13] [14] [15].  
*Entelecara errata* O. P.-Cambridge, 1913: [9] [15].  
*Erigone arctica* (White, 1852): [6] [7] [8] [9] [13] [14] [15].  
*Erigone atra* Blackwall, 1833: [7] [8] [9] [13] [14] [15].  
\* *Erigone dentigera* O. P.-Cambridge, 1874: [14] [15].  
*Erigone promiscua* (O. P.-Cambridge, 1873): [7] [8] [9] [13] [14] [15].  
*Erigone psychrophila* Thorell, 1871: [6] [9] [13] [15].  
*Erigone tirolensis* L. Koch, 1872: [8] [9] [13] [15].  
\* *Erigone whymperi* O. P.-Cambridge, 1877: [15].  
*Gonatum rubens* (Blackwall, 1833): [6] [7] [8] [9] [13] [14] [15].  
*Gongylidiellum vivum* (O. P.-Cambridge, 1875): [8] [9] [13] [14] [15].  
\* *Halorates reprobus* (O. P.-Cambridge, 1879): [15].  
*Hilaira nubigena* Hull, 1911: [9] [14] [15].  
*Hypomma bituberculatum* (Wider, 1834): [13] [15].  
*Improphantes complicatus* (Emerton, 1882): [9] [13] [15].  
*Lepthyphantes leprosus* (Ohlert, 1865): [6] [7] [15].  
*Leptorhoptrum robustum* (Westring, 1851): [6] [7] [8]

[9] [13] [14] [15].

*Mecynargus morulus* (O. P.-Cambridge, 1873): [7] [8]

[9] [13] [14] [15].

\* *Microlinyphia pusilla* (Sundevall, 1830): [15].

*Monocephalus fuscipes* (Blackwall, 1836): [8] [9] [13] [15].

*Mughiphantes whymeri* (F. O. P.-Cambridge, 1894): [13] [15].

*Oreoneta frigida* (Thorell, 1872): [6] [7] [8] [9] [13] [14] [15].

*Oreonetides vaginatus* (Thorell, 1872): [6] [8] [9] [13] [15].

*Ostearius melanopygius* (O. P.-Cambridge, 1879): [13].

*Palliduphantes ericaeus* (Blackwall, 1853): [7] [8] [9] [13] [14] [15].

*Poeciloneura variegata* (Blackwall, 1841): [6] [7] [8] [9] [13] [15].

\* *Porrhomma campbelli* F. O. P.-Cambridge, 1894: [14].

*Porrhomma convexum* (Westring, 1851): [6] [8] [9] [13] [14] [15].

*Porrhomma egeria* Simon, 1884: [8].

*Porrhomma montanum* Jackson, 1913: [7] [13] [14] [15].

\* *Porrhomma pallidum* Jackson, 1913: [15].

*Saaristoa abnormis* (Blackwall, 1841): [6] [7] [8] [9] [13] [14] [15].

*Savignia frontata* Blackwall, 1833: [6] [7] [8] [9] [13] [14] [15].

*Scotinotylus evansi* (O. P.-Cambridge, 1894): [9] [13] [15].

*Semljicola faustus* (O. P.-Cambridge, 1900): [8] [9] [13] [14] [15].

\* *Silometopus ambiguus* (O. P.-Cambridge, 1905): [15].  
*Tenuiphantes mengei* (Kulczynski, 1887): [8] [13] [14] [15].

*Tenuiphantes tenuis* (Blackwall, 1852): [7] [8] [13] [14] [15].

*Tenuiphantes zimmermanni* (Bertkau, 1890): [6] [7] [8] [9] [13] [14] [15].

*Tiso aestivus* (L. Koch, 1872): [9].

*Tiso vagans* (Blackwall, 1834): [7] [8] [13] [14] [15].

*Walckenaeria antica* (Wider, 1834): [8] [9] [13] [14] [15].

*Walckenaeria clavicornis* (Emerton, 1882): [8] [13] [14] [15].

*Walckenaeria cuspidata* Blackwall, 1833: [7] [8] [13] [14] [15].

*Walckenaeria nodosa* O. P.-Cambridge, 1873: [8] [13] [14].

*Walckenaeria nudipalpis* (Westring, 1851): [6] [8] [9] [13] [14] [15].

## LYCOSIDAE

*Alopecosa pulverulenta* (Clerck, 1757): [8] [9] [13] [14] [15].

*Arctosa alpigena* (Doleschall, 1852): [13].

*Pardosa palustris* (Linnaeus, 1758): [4] [6] [7] [8] [9] [13] [14] [15].

*Pardosa sphagnicola* (Dahl, 1908): [7] [8] [13] [14] [15].

*Pardosa trailli* (O. P.-Cambridge, 1873): [6].

*Pirata piraticus* (Clerck, 1757): [4] [8] [9] [13] [14] [15].

*Trochosa terricola* Thorell, 1856: [6] [8] [9] [13] [14] [15].

## PHOLCIDAE

*Pholcus phalangioides* Fuesslin, 1775: [10] [13] [15].

\* *Psilochorus simoni* (Berland, 1911): [15].

## TETRAGNATHIDAE

*Metellina merianae* (Scopoli, 1763): [4] [6] [7] [8] [9] [15].

\* *Tetragnatha extensa* (Linnaeus, 1758): [14] [15].

## THERIDIIDAE

\* *Parasteatoda tepidariorum* (C. L. Koch, 1841): [15].

*Robertus arundineti* (O. P.-Cambridge, 1871): [6].

*Robertus lividus* (Blackwall, 1836): [5] [6] [7] [8] [9] [13] [14] [15].

*Steatoda bipunctata* (Linnaeus, 1758): [1] [2] [15].

## THOMISIDAE

*Ozyptila trux* (Blackwall, 1846): [8] [13] [15].

*Xysticus cristatus* (Clerck, 1757): [4] [6] [7] [8] [9] [13] [14] [15].

## ULOBORIDAE

*Uloborus plumipes* Lucas, 1846: [11] [13] [15].

Spider species deleted from the previous checklist of Bengtson *et al.* (2004):

## ARANEIDAE

*Araneus diadematus* Clerck, 1757: [13] [15].

*Araneus quadratus* Clerck, 1757: [13] [15].  
*Nuctenea umbratica* (Clerck, 1757): [12] [13] [15].

#### LINYPHIIDAE

*Agyneta ramosa* Jackson, 1912: [13].  
*Bolephthyphantes index* (Thorell, 1856): [3].  
*Tmeticus affinis* (Blackwall, 1855): [3].  
*Walckenaeria obtusa* Blackwall, 1836: [6].

#### THERIDIIDAE

*Crustulina guttata* (Wider, 1834): [13].

#### THOMISIDAE

*Ozyptila atomaria* (Panzer, 1801): [13].

Other spider species recorded in the Faroes but omitted from the checklist:

#### ARANEIDAE

*Araniella cucurbitina* (Clerck, 1757): [15].  
*Cyclosa conica* (Pallas, 1772): [15].  
*Larinioides ixobolus* (Thorell, 1873): [15].  
*Larinioides sclopetarius* (Clerck, 1757): [15].

#### EUTICHURIDAE

*Cheiracanthium erraticum* (Walckenaer, 1802): [15].

#### LINYPHIIDAE

*Neriene montana* (Clerck, 1757): [15].

#### PHILODROMIDAE

*Philodromus* sp.: [15].

#### SALTICIDAE

*Evarcha jucunda* (Lucas, 1846): [15].  
*Hasarius adansoni* (Audouin, 1826): [15].  
*Icius subinermis* Simon, 1937: [15].  
*Marpissa muscosa* (Clerck, 1757): [15].  
*Philaeus chrysops* (Poda, 1761): [15].  
*Salticus scenicus* (Clerck, 1757): [15].

#### THERIDIIDAE

*Enoplognatha ovata* (Clerck, 1757): [15].  
*Steatoda paykulliana* (Walckenaer, 1805): [15].

#### Specific comments on species

For the more common species, only records

that are new to particular islands are mentioned. New species are marked with an asterisk (\*), species deleted from the previous checklist with a dagger (†), doubtful members of the fauna with a question mark (?), and species not added to the checklist (not meeting the criteria at present) are in parenthesis. For each record listed “m” refers to meter above sea level.

***Eratigena atrica***. This is a fairly new species for the Faroese fauna recorded for the first time in 1990 and for the second time in 2002 (Bengtson *et al.* 2004). Here we report several new findings mainly from Tórshavn where the species is well established, but also from several settlements of Streymoy and the first record from Suðuroy. The species seems confined to buildings and surroundings in the Faroes.

New records: **Streymoy**, Hósvik (UTM 29 596960 6890040), indoors, 1 juvenile, 15 m, 08.VIII.2006, Jákup Tausen leg., CJL-3958; Kollafjørður, Kollafjord Pelagic fish processing factory (UTM 29 608156 6887376), indoors 1♀, 5 m, 10.III.2004, Hans Ib Jacobsen leg., CJL-3945; Tórshavn (UTM 29 617000 6877500), indoors 1♂, 30 m, 14.X.2009, Dánial Jespersen leg., CJL-7424; Tórshavn (UTM 29 617000 6877500), indoors 1♂, 30 m, 22.X.2004, Louise Hansen leg., CJL-3946; Tórshavn (UTM 29 617000 6877500), indoors 1♀, 30 m, 23.III.2007, Edvard Hermansen leg., CJL-4020; Tórshavn, flower shop Akkuleya (UTM 29 617000 6877500), indoors 1♂, 30 m, 25.IX.2006, Jens-Kjeld Jensen leg., CJL-3953; Tórshavn, shipping company Skipafelagið Føroyar (UTM 29 617086 6876827), indoors, 1♂, 5 m, 22.VIII.2003, Tommy Andreasen leg., CJL-3944; Tórshavn, Technical School (UTM 29 615196 6876205), indoors, 1♂, 90 m, 06.X.1995, Ólavur Hansen leg., CJL-3932; Vestmanna, Vestmanna Timburhandil, tools and timber merchant (UTM 29 596498 6892610), indoors, 1♀, 2 m, 22.IV.1992, Dorete Bloch leg., CJL-3931; **Suðuroy**, Tvøroyri, Delta Seafood, fish plant (UTM 29 616177 6826525), indoors, 1♂, 4 m, 16.IX.2011, Hallur Hentze leg., CJL-7877.

***Tegenaria domestica***. This is a widespread and common house spider in urban areas. Among the two first spider species to be reported from the Faroes (in 1782) according to Svabo (1959)



but since then only reported sparsely (Bengtson *et al.* 2004). Here we report several new records, including first findings for Borðoy, Hestur, Kalsoy, Mykines, Nólsoy, Skúvoy, Stóra Dímun, Vágar and Viðoy. One record is from heathland away from houses, but most are from inside houses, occasionally outside.

New records: **Borðoy**, Klaksvík (UTM 29 625800 6901040), indoors, 1♀, 10 m, 05.XI.2016, Jóhan Hendrik Jørgensen leg., CJL-11655; **Eysturoy**, Norðragøta (UTM 29 617770 6898090), harbour wasteland, 1♀, 5 m, 02.VI.2009, Jens-Kjeld Jensen leg., CJL-5549; Gjógv, gorge (UTM 29 606715 6912642), urban area, outdoors, 1 juvenile, 5 m, 06.VIII.2014, Jørgen Lissner leg., CJL-10173; Lake Toftavatn, St. 1 (UTM 29 618783 6887577), dwarf-shrub heath, 1♂, 15 m, 17.VIII.2009, William Simonsen leg., Coll. FMNH; Toftir (UTM 29 618033 6886601), in building, 2 juveniles, 5 m, 19.XI.2009, Hans Eli Sivertsen leg.; **Hestur**, village (UTM 29 610713 6871263), indoors, 1 juvenile, 25 m, 28.VI.2009, Jens-Kjeld Jensen leg., CJL-5843; **Kalsoy**, Húsar (UTM 29 619642 6905890), urban area, outdoors, 1♂1♀, 20 m, 27.VIII.2009, Óli Normann Jacobsen leg., CJL-5883; **Mykines**, village (UTM 29 570790 6886551), indoors, 1♀, 55 m, 28.VI.2008, Jens-Kjeld Jensen leg., CJL-5018; **Nólsoy**, village (UTM 29 624340 6871540), outdoors 1♀, 15 m, 19.VI.2010, Jørgen Lissner leg., CJL-6753; Same locality, 1♀ 1 juvenile, 24.III.2007, Jens-Kjeld Jensen leg., CJL-4019; **Skúvoy**, village (UTM 29 615775 6850640), indoors, 1♂, 40 m, 21.VIII.2008, Jens-Kjeld Jensen leg., CJL-5144; **Stóra Dímun**, village (UTM 29 618738 6841149), indoors, 1♂1♀, 95 m, 07.VIII.2010, Jens-Kjeld Jensen leg., CJL-6830; **Streymoy**, Tórshavn (UTM 29 617000 6877500), indoors, 1 juvenile, 30 m, 11.XI.2009, Marita Gulkklett leg., CJL-6506; Tórshavn (UTM 29 617000 6877500), indoors, 1♂1♀, 30 m, 15.VII.2012, Jørgen Lissner leg., CJL-8280; Tórshavn (UTM 29 617000 6877500), indoors, 1♂, 30 m, 18.VIII.2007, Jens-Kjeld Jensen leg., CJL-4274; Tórshavn, trading center SMS (UTM 29 616502 6877775), indoors, 1 juvenile, 38 m, 05.I.2002, Dánial Jespersen leg., CJL-3915; Tórshavn, trading center SMS (UTM 29 616502 6877775), indoors, 1♂, 38 m, 05.XI.2000, Dánial Jespersen leg., CJL-3923; Tórshavn, trading center SMS (UTM 29 616502 6877775), indoors, 1♀, 38 m, 20.V.2001, Dánial Jespersen leg., CJL-3928; **Suðuroy**, Vágur (UTM 29 616390 6817450), indoors,

1♀, 50 m, 27.V.2008, Jens-Kjeld Jensen leg., CJL-4939; **Vágar**, Sørvágar (UTM 29 588500 6883350), outdoors, 1 juvenile, 20 m, 10.XI.2007, Rodmund á Kelduni leg., CJL-4373; Sørvágar (UTM 29 588500 6883350), outdoors, 1♂, 20 m, 20.IV.2008, Rodmund á Kelduni leg., CJL-4760; **Viðoy**, Hvannasund (UTM 29 628600 6909750), indoors, 1♀, 10 m, 08.XI.2016, Silas K. Olofsen leg., CJL-11656.

\* **Amaurobius fenestralis** (Figure 1). First record for the Faroes (Sørvágar 2007).

The species inhabits rock walls, houses and stone fences and is locally abundant. Apparently, the occurrence of this species is the result of a recent colonization followed by a rapid spread. It is already known as common in several urban areas: Tórshavn, Bøur, Sandavágur, Miðvágur, and Sørvágar. The cribellate webs are very distinct and it is unlikely that this species has been overlooked in the past.

New records: **Eysturoy**, Skála, school (UTM 29 615634 6893617), building, outdoors, 2♂ 2♀, 20 m, 10.IV.2009, Rodmund á Kelduni leg., CJL-5429; **Streymoy**, Kirkjubøur (UTM 29 615760 6870890), indoors, 2♀, 10 m, 12.VI.2010, Jørgen Lissner leg., CJL-6763; Same locality, 1♀, 05.VIII.2014, Jørgen Lissner leg., CJL-10201; Tórshavn (UTM 29 617000 6877500), indoors, 4♂, 30 m, 02.X.2007, Jens-Kjeld Jensen leg., CJL-4308; Same locality, 1♀, 08.I.2008, Jens-Kjeld Jensen leg., CJL-4382; Tórshavn (UTM 29 617000 6877500), indoors, 1 juvenile, 30 m, 08.X.2008, Petur Mortensen leg., CJL-5230; Tórshavn City Park (Viðarlundin) (UTM 29 616211 6877974), park, 1♀, 50 m, 21.VII.2012, Jørgen Lissner leg., CJL-8264; Tórshavn, Tinghúsvegur 48 (UTM 29 616554 6877596), House, outdoors, 1♂, 25 m, 27.IX.2007, Rodmund á Kelduni leg., CJL-4304; **Vágar**, Bøur (UTM 29 585125 6884850), outdoors, 1♀ 1 juvenile, 10 m, 11.VIII.2008, Rodmund á Kelduni leg., CJL-5123; Miðvágur (UTM 29 594400 6880850), indoors, 7♂ 1 juvenile, 10 m, 12.XI.2007, Rodmund á Kelduni leg., CJL-4365; Miðvágur, Tormansbakkí (UTM 29 594638 6881070), among boulders of groyne, 1♂ 1♀, 2 m, 12.VIII.2014, Jørgen Lissner leg., CJL-10185; Sandavágur (UTM 29 596740 6881435), outdoors, 1♀, 15 m, 22.XI.2007, Rodmund á Kelduni leg., CJL-4377; Sørvágar (UTM 29 588500 6883350), garden, 2♀, 20 m, 19.VIII.2007, Rodmund á Kelduni leg., CJL-



**FIGURE 1.** *Amaurobius fenestralis* (Ström, 1768), male from Miðvágur, Vágur. Photo: J. Lissner.

4266; Same locality, 18♂ 5♀, 17.IX.2007, Rodmund á Kelduni leg., CJL-4352.

\* *Amaurobius similis*. First record for the Faroes (Vatnsøyrrar 2014). This species has only been found in one building in the Faroes where breeding is confirmed. It inhabits houses.

First records: **Vágur**, Vatnsøyrrar, Zarepta christian children camp (UTM 29 591470 6883955), indoors, 1♀, 40 m, 26.VI.2014, Sirikit Jacobsen leg., CJL-10133; Same locality, 4♂, 10.XI.2016, Rodmund á Kelduni leg., CJL-11654.

† *Araneus diadematus*. This species has been introduced to the Faroes repeatedly, but apparently failed to establish breeding populations. It is therefore deleted from the Faroese checklist. It was recorded for the first time in 2002 from a building in Tórshavn.

New records: **Streymoy**, Tórshavn (UTM 29 617000 6877500), indoors, , 1♀, 30 m, 27.IX.2006, Maria Poulsen leg., CJL-3941; Tórshavn (UTM 29 617000 6877500), indoors, 1♀, 30 m, 06.XI.2002, Nicolaj Falck leg., CJL-3960; Tórshavn, shipping company Skipafelagið Føroyar (UTM 29 617086

6876827), indoors 1♀, 5 m, 15.VIII.2005, Tommy Andreasen leg., CJL-3904; Tórshavn (UTM 29 616469 6877530), outdoors 1♀, 30 m, 07.IX.2009, Randi Arge leg., CJL-5864; Tórshavn (UTM 29 617000 6877500), indoors, 1♀, 30 m, 07.X.2009, Pauli Hansen leg., CJL-5868; Tórshavn, Harbour (UTM 29 616915 6877090), Vehicle, 2♀, 1 m, 01.X.2011, Pauli Hansen leg., CJL-7917; Tórshavn, trading center SMS (UTM 29 616502 6877775), indoors, 1 juvenile, 38 m, 03.VI.2013, Dánial Jespersen leg., CJL-9097; **Vágur**, Sørvágur, near the fish factory (UTM 29 587479 6883152), harbour wasteland, 1 juvenile, 5 m, 10.XI.2007, Rodmund á Kelduni leg., CJL-4372.

† *Araneus quadratus*. Added to the Faroese checklist in 2004 based on a female collected indoors in Tórshavn (Bengtson *et al.* 2004). Here we report another female collected indoors in Tórshavn. Since the species has not been found in natural habitat and there is no evidence of breeding it is deleted from the Faroese checklist.

New record: **Streymoy**, Tórshavn (UTM 29 617000 6877500), indoors 1♀, 30 m, 07.X.2010, Dánial Jespersen leg., CJL-6910.

(*Araniella cucurbitina*). Introduced on only one occasion to the Faroes (a flower shop). Not yet considered a member of the Faroese fauna. However, it may be able to breed in the Faroes. In Sweden the species is found as far north as 68°N (Almquist 2005).

Record: **Streymoy**, Tórshavn, flower shop Akkuleya (UTM 29 617000 6877500), indoors, 1♀, 30 m, 18.VII.2005, Jens-Kjeld Jensen leg., CJL-3970.

(*Cyclosa conica*). Recorded once in a building of a trading centre indicating that the specimen was introduced from abroad. Not yet considered a member of the Faroese fauna. In Sweden it is found as far north as 68°N and it may be able to breed in city parks and plantations.

Record: **Streymoy**, Tórshavn, trading centre SMS (UTM 29 616502 6877775), indoors, 1 juvenile, 38 m, 10.XII.2002, Dánial Jespersen leg., CJL-3905.

(*Larinioides ixobolus*). Recorded once in the Faroes from a truck imported from Denmark but purchased in Hungary about one month earlier of shipment to the Faroes. The species is unable to breed in the Faroes and is not added to the checklist.

Record: **Streymoy**, Tórshavn, Plátuverkstaðið, Heykavegur 2 (UTM 29 616708 6878414), outside of truck, 2♀, 60 m, 15.XI.2016, Dánial Jespersen leg., CJL-11652.

(*Larinioides sclopetarius*). Recorded twice from a building of a trading centre and is not considered a member of the Faroese fauna. The species is largely absent from Scotland and is not found in Orkney and Shetland. Breeding in the Faroes is thus assumed unlikely.

Records: **Streymoy**, Tórshavn, trading centre SMS (UTM 29 616502 6877775), indoors, 1♀, 38 m, 10.X.2002, Dánial Jespersen leg., CJL-3907. Same locality, 1 juvenile, 23.IX.2002, Dánial Jespersen leg., CJL-3903.

† *Nuctenea umbratica*. A distinctive species first recorded in 2003 (Magnussen 2003). Here we report several new findings. There is yet no evidence of breeding and the species is deleted from the Faroese checklist. The species

is abundant further to the south in Europe.

New records: **Sandoy**, Skopun (UTM 29 611055 6865521), outdoors, 1♀, 40 m, 15.IX.2010, Kári Petersen leg., CJL-6909; **Streymoy**, Tórshavn (UTM 29 617000 6877500), indoors, 1♀, 30 m, 10.VIII.2009, Edith Petersen leg., CJL-5723; Tórshavn, trading centre SMS (UTM 29 616502 6877775), indoors, 1 juvenile, 38 m, 01.VIII.2002, Dánial Jespersen leg., CJL-3969; Tórshavn, trading centre SMS (UTM 29 616502 6877775), indoors, 1♀, 38 m, 10.V.2002, Dánial Jespersen leg., CJL-3959; **Víðoy**, Hvannasund (UTM 29 628600 6909747), outdoors, 1♀, 8 m, 02.VI.2009, Jákup Ludvík Lydersen leg., CJL-5562.

\* *Zygiella x-notata* (Figure 2). First record for the Faroes (Tórshavn 2000). This species has undergone a fast spread in the Faroes, predominantly in urban areas and breeding is confirmed. The majority of the Faroese specimens have aberrant colour markings with the lateral edges of abdomen and the fore patches red instead of grey as in normal specimens. The habitus (Figure 2) is thus not unlike that of *Z. atrica* (C. L. Koch, 1845).

Records: **Borðoy**, Klaksvík at shipyard (UTM 29 625255 6902134), harbour wasteland, 1 juvenile (matured as male in captivity), 1 m, 10.VIII.2014, Jørgen Lissner leg., CJL-10166; **Streymoy**, Kirkjubøur (UTM 29 615760 6870890), indoors, 1♀, 10 m, 12.IX.2007, Rodmund á Kelduni leg., CJL-4318; Kollafjørður (UTM 29 609535 6889100), outdoors, 4♂4♀, 20 m, 22.VIII.2008, Rodmund á Kelduni leg., CJL-5159; Tórshavn (UTM 29 617000 6877500), indoors, 1♀, 30 m, 02.X.2007, Jens-Kjeld Jensen leg., CJL-4309; Tórshavn at the Nordic House (UTM 29 616185 6878396), rich fens, 1 juvenile (matured as male in captivity), 65 m, 07.VIII.2014, Jørgen Lissner leg., CJL-10188; Tórshavn, trading centre SMS (UTM 29 616502 6877775), indoors, 1♀, 38 m, 05.I.2002, Dánial Jespersen leg., CJL-3913; Same locality 1♀, 08.VIII.2014, Jørgen Lissner leg., CJL-10180; Same locality, 1♀, 18.IX.2002, Dánial Jespersen leg., CJL-3909; Same locality, 1 juveniles, 24.VII.2000, Dánial Jespersen leg., CJL-3927; **Suðuroy**, Tvøroyri, hospital (UTM 29 616253 6826743), outdoors (outside of building), 2 juveniles, 40 m, 16.VII.2012, Jørgen Lissner leg., CJL-8272; **Vágur**, Miðvágur (UTM 29 594400 6880850), indoors, 1 juveniles, 10 m, 26.VIII.2004, Ingi





FIGURE 2. *Zygiella x-notata* (Clerck, 1757) reddish female from Kollafjørður, Streymoy. Photo: J. Lissner.

Joensen leg., CJL-3948; Miðvágur, Norði í Líð (UTM 29 592200 6881500), pastures, 1♂1♀, 45 m, 10.IX.2007, Rodmund á Kelduni leg., CJL-4322; Sørvágur (UTM 29 588500 6883350), outdoors, 2♂8♀1 juveniles, 20 m, 18.XI.2007, Rodmund á Kelduni leg., CJL-4376; Sørvágur, garden (UTM 29 588500 6883350), garden, 1♀1 juveniles, 20 m, 28.VIII.2007, Rodmund á Kelduni leg., CJL-4278.

***Clubiona trivialis***. The species is known from three areas of the Faroes (see map). The species seems confined to areas that are less overgrazed and is found at places with relatively high coverage of tall heather. Previously only found in two localities on Streymoy (Bengtson *et al.* 2004). Here we report several new findings, the first ones from Eysturoy and Vágur.

New records: **Eysturoy**, Lake Toftavatn (UTM 29 619570 6886835), dwarf-shrub heath, 1♂2♀, 35 m, 10.VIII.2014, Jørgen Lissner leg., CJL-10255; same locality, 2 juveniles, 17.VIII.2008, Rodmund á Kelduni leg., CJL-5137; same locality, 1 juveniles, 18.IV.2008, Rodmund á Kelduni leg., CJL-4765; Lake Toftavatn,

St. 1 (UTM 29 618783 6887577), dwarf-shrub heath, 1♂, 15 m, 17.VII.2009, William Simonsen leg., Coll. FMNH; same locality, 1♂, 31.VII.2009, William Simonsen leg., Coll. FMNH; Lake Toftavatn, St. 4 (UTM 29 618650 6887313), dwarf-shrub heath, 1♂, 20 m, 17.VIII.2009, William Simonsen leg., Coll. FMNH; Lake Toftavatn, St. 5 (UTM 29 618812 6887331), dwarf-shrub heath, 1♂0, 19 m, 31.VII.2009, William Simonsen leg., Coll. FMNH; Toftir, Saltnes (UTM 29 617758 6888089), 1♀2 juveniles, 15 m, 07.V.2010, Rodmund á Kelduni leg., CJL-6533; **Vágur**, Miðvágur, Norði í Líð (UTM 29 592200 6881500), pastures, 1♂, 45 m, 10.IX.2007, Rodmund á Kelduni leg., CJL-4328; same locality, 1♀, 26.VII.2008, Rodmund á Kelduni leg., CJL-5024; Sørvágur, Hattardalur / Sunnari Suðurtriðingur (UTM 29 591502 6880984), pastures, 3♂1♀, 100 m, 11.VIII.2014, Jørgen Lissner leg., CJL-10269; Sørvágur, Ytri Suðurtriðingur (UTM 29 589900 6881050), pastures, 1♀, 250 m, 03.IX.2007, Rodmund á Kelduni leg., CJL-4331; same locality 2♀, 13.V.2008, Rodmund á Kelduni leg., CJL-4913; same locality, 1♀, 28.VII.2008, Rodmund á Kelduni leg., CJL-5028; Sørvágur, outfield at Hotel 62N (UTM 29 589580

6883175), dwarf-shrub heath, 1♀1 juvenile, 100 m, 22.VII.2012, Jørgen Lissner leg., CJL-8333.

**(*Cheiracanthium erraticum*).** A juvenile has been found indoors in Tórshavn. The specimen is considered an accidental import and there is no evidence of breeding in the Faroes. Not added to the checklist.

Record: **Streymoy**, Tórshavn, trading centre SMS (UTM 29 616502 6877775), indoors, 1 juvenile, 38 m, 30.X.2002, Dánial Jespersen leg., CJL-3910.

***Haplodrassus signifer*.** This is a rare and local species in the Faroes. Previously recorded only twice in the Faroes, one specimen each from Streymoy and Vágur (Bengtson & Hauge 1979; Brændegård 1928). Here we report first records from Fugloy, Nólsoy and Svínøyr.

New records: **Fugloy** (UTM 29 638600 6913600), pastures, 1 juvenile, 250 m, 28.VIII.2007, Jens-Kjeld Jensen leg., CJL-4270; **Nólsoy**, Borðan (UTM 29 624340 6871540), *Sphagnum* community, 1 juvenile (matured as male in captivity in April the following year), 75 m, 03.VI.2013, Jens-Kjeld Jensen leg., CJL-9595; **Nólsoy**, outfield (UTM 29 624500 6871500), sun exposed peat bank, 3♀, 75 m, 19.VI.2010, Jørgen Lissner leg., CJL-6754; **Svínøyr**, Kletsbrúgv (UTM 29 638637 6908728), dwarf-shrub heath, 1♀, 125 m, 02.VIII.2008, Jens-Kjeld Jensen leg., CJL-5046; **Vágur**, Sørvágur, outfield at Hotel 62N (UTM 29 589580 6883175), dwarf-shrub heath, 1 juvenile, 100 m, 22.VII.2012, Jørgen Lissner leg., CJL-8332.

***Iberina montana*.** Previously recorded once at Tvøroyri, Suðuroy (Schenkel 1925). The species has not been recorded since.

***Agyseta decora*.** This is a common species in the Faroes. In the previous checklist it was known from 10 islands (Bengtson *et al.* 2004). Here we report the species from two additional islands, Skúvoy and Stóra Dímun.

New records: **Skúvoy**, Byrgisbakki (UTM 29 615741 6851026), pastures, 1♂, 15 m, 25.VI.2012, William Simonsen leg., Coll. FMNH; **Skúvoy**, infield (UTM 29 615503 6850596), rich, continually cultivated grasslands, 1♂, 35 m, 12.VI.2012, William Simonsen leg., Coll. FMNH; **Knútur** (UTM 29 613326 6850203),

pastures, 8♂1♀, 360 m, 12.VII.2012, William Simonsen leg., Coll. FMNH; **Stóra Dímun**, outfield (UTM 29 618945 6841583), Grassland slope, 1♀, 300 m, 07.VIII.2010, Jens-Kjeld Jensen leg., CJL-6833.

***Agyseta gulosa*.** Previously known only from Havnardalur, Streymoy. Here we report three new localities and the first one from Víðoy.

New records: **Streymoy**, Húsareyn (west of Tórshavn) (UTM 29 614002 6878573), Open scree slope, 2♀, 340 m, 12.VIII.2014, Jørgen Lissner leg., CJL-10206; Same locality, 2♂, 14.VI.2010, Jørgen Lissner leg., CJL-6689; Same locality, 1♀, 22.VIII.2009, Jens-Kjeld Jensen leg., CJL-5796; Sornfelli north of summit (UTM 29 606392 6884102), fell-field, 1♂, 645–690 m, 05.VIII.2014, Jørgen Lissner leg., CJL-10224; Same locality, 1♂, 18.VII.2011, Jørgen Lissner leg., CJL-8288; **Víðoy**, Uppi á Garði, Villingadalsfjall (UTM 29 626467 6918949), rocks, 1♂, 700 m, 31.VIII.2008, Jens-Kjeld Jensen leg., CJL-5161.

***Agyseta nigripes*.** A fairly common species with most records above 300 m. Previously known from 5 islands (Bengtson *et al.* 2004). Here we report the species from three additional islands, Nólsoy, Skúvoy, and Vágur.

New records: **Nólsoy**, Eggjarklettur (UTM 29 622974 6875196), pastures, 1♂, 360 m, 07.V.2008, Jens-Kjeld Jensen leg., CJL-4955; **Skúvoy**, Skorarbrekkan (UTM 29 615456 6848535), steppe and grassland slope, 2♀, 200 m, 21.VIII.2008, Jens-Kjeld Jensen leg., CJL-5145; **Vágur**, Vatnsoyrar, á Fossi at the SE lakeshore of Lake Fjallavatn (UTM 29 589234 6887611), pastures, 1♂, 105 m, 11.VIII.2014, Emilie Sofie Lissner leg., CJL-10155.

† ***Agyseta ramosa*.** Only reported once (5♂♂) in outfield at Sund, Streymoy in 1984 (Bengtson *et al.* 2004). The specimens have been examined again in this study and found to be misidentified *A. decora* males with partly or fully expanded palps. The lamellae of the two species are quite different in shape and the Faroese specimens possess the large semi-circular ones distinctive of *A. decora* and lacks the curved process distinctive of *A. ramosa*. There are no other records of *A. ramosa* in the Faroes and the species is deleted from the Faroese checklist.



*Agyneta subtilis*. Previously found once (1♂) just north of the village of Kunoy, Kunoy (Bengtson et al. 2004). The specimen was not available for re-examination as it could not be located in Lund or in Bergen.

\* *Allomengea scopigera*. First record for the Faroes at Lake Toftavatn in 2008. Since then also recorded on Sandoy and several localities on Streymoy. Found in tall heather near lakes or in fens.

New records: **Eysturoy**, Lake Toftavatn at Toftir (UTM 29 619570 6886835), dwarf-shrub heath, 1♂, 35 m, 06.VIII.2008, Rodmund á Kelduni leg., CJL-5141; Same locality, 1♂1♀, 10.VIII.2014, Jørgen Lissner leg., CJL-10254; Same locality, 4♂6♀, 17.VIII.2008, Rodmund á Kelduni leg., CJL-5140; Lake Toftavatn, St. 3 (UTM 29 618653 6887486), dwarf-shrub heath, 1♀, 16 m, 04.IX.2009, William Simonsen leg., Coll. FMNH; Lake Toftavatn, St. 4 (UTM 29 618650 6887313), dwarf-shrub heath, 1♂1♀, 20 m, 04.IX.2009, William Simonsen leg., Coll. FMNH; **Sandoy**, eastern shore of Grothusvatn (UTM 29 614219 6858148), Poor fens, 1♀, 6 m, 12.VIII.2009, Jens-Kjeld Jensen leg., CJL-5792; **Streymoy**, Tórshavn, mouth of river Sandá (UTM 29 616387 6876158), pebble or gravel coast, 1♂, 2 m, 22.VIII.2010, Jens-Kjeld Jensen leg., CJL-6815; Tórshavn, Mýrilendi (UTM 29 615674 6879021), mire, 3♀, 95 m, 13.VIII.2010, William Simonsen leg., Coll. FMNH; Tórshavn, Ternuryggur (UTM 29 615662 6879225), urban area, outdoors, 4♂20♀, 100 m, 09.IX.2010, William Simonsen leg., Coll. FMNH; Same locality, 1♂, 100 m, 13.VIII.2010, William Simonsen leg., Coll. FMNH.

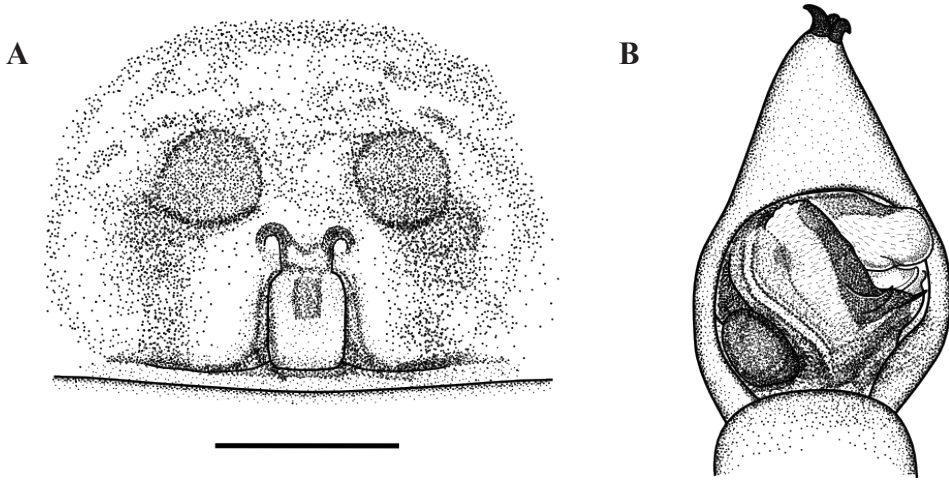
\* *Baryphyma trifrons*. First record for the Faroes at Mølheyggjar in 2010. The only known specimen was found in natural habitat (sand dunes) among marram grass. It is therefore added to the Faroese checklist even though breeding is not confirmed. It is considered a northern species in Great Britain with the northernmost records from Orkney. An illustration of the epigyne is produced (Figure 3a).

First record: **Sandoy**, sand dune at Mølheyggjar (UTM 29 615390 6858040), coastal dunes, 1♀, 3 m, 13.VI.2010, Jørgen Lissner leg., CJL-6742.

*Bathyphantes gracilis*. Previously found once on Kunoy in rich grass-herb meadow around church (Bengtson & Hauge 1979). Here we report several new records and the first ones from Eysturoy, Skúvoy and Streymoy. The many new records indicate that the species may have increased its range in recent years and has become more common. It is found among heather and in rich grassland at lower elevations.

New records: **Eysturoy**, Lake Toftavatn at Toftir (UTM 29 619570 6886835), dwarf-shrub heath, 1♀, 35 m, 14.VI.2010, Jørgen Lissner leg., CJL-6721; Same locality, 1♂1♀; 18.VII.2012, Jørgen Lissner leg., CJL-8311; **Skúvoy**, Byrgisbakki (UTM 29 615741 6851026), pastures, 1♂, 15 m, 22.V.2012, William Simonsen leg., Coll. FMNH; Same locality, 4♂1♀, 25.VI.2012, William Simonsen leg., Coll. FMNH; Skúvoy, shore (UTM 29 615884 6850591), shore, 4♂3♀, 8 m, 12.VI.2012, William Simonsen leg., Coll. FMNH; **Streymoy**, Hvalvik (UTM 29 602267 6896634), park, 1♀, 3 m, 17.VI.2010, Jørgen Lissner leg., CJL-6700; Sandagerði (UTM 29 616370 6876240), sandy beach, 1♀, 2 m, 12.VI.2011, Jens-Kjeld Jensen leg., CJL-7777; Tórshavn, City Park (Viðarlundin) (UTM 29 616211 6877974), park, 1♀, 50 m, 21.VII.2012, Jørgen Lissner leg., CJL-8260; Tórshavn, Lyngøki (UTM 29 615824 6879377), dwarf-shrub heath, 1♀, 100 m, 17.VIII.2009, William Simonsen leg., Coll. FMNH; Tórshavn, mouth of river Sandá (UTM 29 616387 6876158), pebble or gravel coast, 1♀, 2 m, 18.VI.2010, Jørgen Lissner leg., CJL-6686; Tórshavn, Mýrilendi (UTM 29 615674 6879021), mire, 1♀, 95 m, 01.VIII.2010, William Simonsen leg., Coll. FMNH; Same locality, 2♂, 13.VIII.2010, William Simonsen leg., Coll. FMNH; Same locality, 1♂1♀, 21.VI.2010, William Simonsen leg., Coll. FMNH; Tórshavn, rich fen at the Nordic House (UTM 29 616185 6878396), rich fens, 1♂2♀1 juveniles, 65 m, 07.VIII.2014, Jørgen Lissner leg., CJL-10187; Tórshavn, Hoydalsá (UTM 29 615822 6879362), stream banks, 1♀, 100 m, 13.VIII.2010, William Simonsen leg., Coll. FMNH; Tórshavn, Ternuryggur (UTM 29 615662 6879225), urban area, outdoors, 1♀, 100 m, 05.VIII.2010, William Simonsen leg., Coll. FMNH.

† *Bolephthyphantes index*. Only recorded once in the Faroes on June 9, 1892 at Trongisvágur (Simon 1898). While the presence of *B. index* is likely in



**FIGURE 3.** **A:** epigyne of *Baryphyma trifrons* (O. P.-Cambridge, 1863) in ventral view, specimen from Mølheyggjar, Sandoy. **B:** male palp of *Arctosa alpigena* (Doleschall, 1852) in ventral view, specimen from Sund, Streymoy. Scale bar 0.5 mm. Drawings: J. Lissner.

the Faroes it has never been found again despite several later workers have collected spiders at Trongisvágur and surroundings. It is possible that there has been a mix-up of Faroese localities with other localities. This hypothesis is supported by the second species identified by Simon, *Tmeticus affinis*, also never has been found again in the Faroes, a species which occurrence in the Faroes is unlikely due to its habitat preferences. The record of *B. index* is therefore considered doubtful and the species is deleted from the Faroese checklist.

***Bolyphantes luteolus.*** A fairly common species, previously known from eight islands (Bengtson *et al.* 2004). Here we report the species from three additional islands, Nólsoy, Skúvoy and Viðoy.

New records: **Nólsoy**, Berghamar (UTM 29 622003 6876022), *Sphagnum* community, 1♀, 45 m, 16.VIII.2008, Jens-Kjeld Jensen leg., CJL-5129; **Skúvoy**, infield (UTM 29 615503 6850596), rich, continually cultivated grasslands, 2♂1♀, 35 m, 20.IX.2014, Jens-Kjeld Jensen leg., CJL-10138; **Viðoy**, Inni í Dølum (UTM 29 629112 6914062), dwarf-shrub heath, 1♀, 50-100 m, 17.IX.2012, Jens-Kjeld Jensen leg., CJL-8445.

***Centromerita bicolor.*** A widespread and common species now known from at least ten islands. In

studies preceding Bengtson *et al.* (2004) the species was confused with *C. concinna* and older records are therefore omitted in the maps of both species. Here we report the species from one new island, Skúvoy.

New records: **Skúvoy**, infield (UTM 29 615503 6850596), rich, continually cultivated grasslands, 5♂15♀, 35 m, 20.IX.2014, Jens-Kjeld Jensen leg., CJL-10139; Skúvoy, outfield (UTM 29 614596 6850567), pastures, 1♀, 190 m, 22.V.2012, William Simonsen leg., Coll. FMNH; Skúvoy, shore (UTM 29 615884 6850591), shore, 2♀, 8 m, 12.VI.2012, William Simonsen leg., Coll. FMNH.

***Centromerita concinna.*** Known from nine islands according to Bengtson *et al.* (2004), but these authors only mention seven: Eysturoy, Koltur, Kunoy, Lítla Dímun, Sandoy, Streymoy, and Suðuroy. Here we report the species from five additional islands: Fugloy, Kalsoy, Nólsoy, Skúvoy, and Vágar.

New records: **Fugloy** (UTM 29 638600 6913600), pastures, 1♀, 250 m, 28.VIII.2007, Jens-Kjeld Jensen leg., CJL-4276; **Kalsoy**, Borgarin near Trøllanes (UTM 29 613275 6916660), pastures, 1♀, 520 m, 12.VIII.2012, Jens-Kjeld Jensen leg., CJL-8418; **Nólsoy**, outfield (UTM 29 624500 6871500), pastures, 2♂1♀, 75 m, 19.VIII.2007, Jens-Kjeld Jensen

leg., CJL-4257. **Skúvoy**, Skorarbrekkan (UTM 29 615456 6848535), steppe and grassland slope, 2♂1♀, 200 m, 21.VIII.2008, Jens-Kjeld Jensen leg., CJL-5151. Skúvoy, outfield (UTM 29 614596 6850567), pastures, 2♀, 190 m, 25.VI.2012, William Simonsen leg., Coll. FMNH; Skúvoy, Knútur (UTM 29 613326 6850203), pastures, 8♀, 360 m, 25.VI.2012, William Simonsen leg., Coll. FMNH; **Vágar**, Miðvágur, Norði í Lið (UTM 29 592200 6881500), pastures, 1♂, 45 m, 10.IX.2007, Rodmund á Kelduni leg., CJL-4329; Sunnari Suðurtriðingur (UTM 29 591502 6880984), pastures, 1 subadult male (matured in captivity), 100 m, 11.VIII.2014, Jørgen Lissner leg., CJL-10266; Sørvágur, Ytri Suðurtriðingur (UTM 29 589900 6881050), pastures, 1♂1♀, 250 m, 03.IX.2007, Rodmund á Kelduni leg., CJL-4342; Vatnsoyrar, á Fossi at the SE lakeshore of Fjallavatn (UTM 29 589234 6887611), pastures, 1♂, 105 m, 11.VIII.2014, Jørgen Lissner leg., CJL-10154.

***Centromerus arcanus***. This is a fairly uncommon species known from six islands (Bengtson *et al.* 2004). We found the species in a locality each on Eysturoy and Streymoy, in which islands presence is already known.

New records: **Eysturoy**, Toftavatn St. 4 (UTM 29 618650 6887313), dwarf-shrub heath, 1♀, 20 m, 01.VII.2009, William Simonsen leg., Coll. FMNH; same locality, 3♂, 12.VI.2009, William Simonsen leg., Coll. FMNH; **Streymoy**, Tórshavn, City Park (UTM 29 616211 6877974), park, 2♀, 50 m, 18.VI.2010, Jørgen Lissner leg., CJL-6710; same locality, 2♀, 21.VII.2012, Jørgen Lissner leg., CJL-8265; same locality, 1♀, 17.VII.2009, William Simonsen leg., Coll. FMNH; same locality, 3♀, 17.VIII.2009, William Simonsen leg., Coll. FMNH.

***Centromerus dilutus***. A very rare species in the Faroes. Previously recorded once on Svínøyr (Bengtson & Hauge 1979). Here we report the first records from Eysturoy.

New records: **Eysturoy**, Lake Toftavatn, St. 4 (UTM 29 618650 6887313), dwarf-shrub heath, 1♀, 20 m, 04.IX.2009, William Simonsen leg., Coll. FMNH; Lake Toftavatn, St. 6 (UTM 29 619018 6887577), dwarf-shrub heath, 1♀, 16 m, 31.VII.2009, William Simonsen leg., Coll. FMNH.

***Centromerus prudens***. Also a very rare species in the Faroes. Previously known from two localities at Suðuroy (Bengtson *et al.* 2004). Here we report the species also from Skúvoy.

New records: **Skúvoy**, infield (UTM 29 615503 6850596), rich, continually cultivated grasslands, 1♀, 35 m, 20.IX.2014, Jens-Kjeld Jensen leg., CJL-10136; Skúvoy, outfield (UTM 29 614596 6850567), pastures, 1♀, 190 m, 22.V.2012, William Simonsen leg., Coll. FMNH; Skúvoy, shore (UTM 29 615884 6850591), shore, 1♀, 8 m, 12.VI.2012, William Simonsen leg., Coll. FMNH.

***Ceratinella brevipes***. Previously known from five islands (Bengtson *et al.* 2004). Here we report the species from three additional islands, Fugloy, Svínøyr, and Vágar.

New records: **Eysturoy**, Lake Toftavatn at Toftir (UTM 29 619570 6886835), dwarf-shrub heath, 2♂3♀1 juveniles, 35 m, 10.VIII.2014, Jørgen Lissner leg., CJL-10258; **Fugloy** (UTM 29 638600 6913600), pastures, 1♂1♀, 250 m, 28.VIII.2007, Jens-Kjeld Jensen leg., CJL-4269; **Sandoy**, sand dune at Mølheyggjar (UTM 29 615390 6858040), coastal dunes, 1♀, 3 m, 15.VII.2012, Jørgen Lissner leg., CJL-8337; **Streymoy**, Sund north of Tórshavn (UTM 29 612441 6880364), pastures, 1♀, 230 m, 12.VI.2010, Jørgen Lissner leg., CJL-6735; Tórshavn, City Park (Viðarlundin) (UTM 29 616211 6877974), park, 2♀, 50 m, 18.VI.2010, Jørgen Lissner leg., CJL-6711; Tórshavn, rich fen at the Nordic House (UTM 29 616185 6878396), rich fens, 1 juveniles, 65 m, 07.VIII.2014, Jørgen Lissner leg., CJL-10190; **Svínøyr**, Kletsbrúgv (UTM 29 638637 6908728), dwarf-shrub heath, 1♀, 125 m, 02.VIII.2008, Jens-Kjeld Jensen leg., CJL-5047; **Vágar**, Sørvágur, Ytri Suðurtriðingur (UTM 29 589900 6881050), pastures, 1♀, 250 m, 13.V.2008, Rodmund á Kelduni leg., CJL-4914; Miðvágur, Ravnagil (UTM 29 592770 6881120), pastures, 1♀, 40 m, 13.V.2008, Rodmund á Kelduni leg., CJL-4897.

***Collinsia holmgreni***. Recorded rather sparsely in the Faroes, mostly from under stones on high ground. Here we report the first record from Borðøyr.

New records: **Borðøyr**, Depilsknúkur (UTM 29 627424 6907267), fell-field, 1♀, 680 m, 10.VIII.2012, Jens-Kjeld Jensen leg., CJL-8376; **Eysturoy**,

Slættaratinur, Suðurhelvt (UTM 29 602085 6908640), fell-field, 2♀, 600 m, 26.V.2008, Rodmund á Kelduni leg., CJL-4958; **Streymoy**, Sornfelli at Varðabrúgv (UTM 29 606720 6884520), fell-field, 3♀ 2 juveniles, 580 m, 17.VI.2010, Jørgen Lissner leg., CJL-6678; Sornfelli north of summit (UTM 29 606392 6884102), fell-field, 5♂8♀, 645–690 m, 05.VIII.2014, Jørgen Lissner leg., CJL-10220.

**Diplocentria bidentata**. A local species in the Faroes. Known from six islands (Bengtson *et al.* 2004). The first record from Kalsoy is reported below.

New records: **Kalsoy**, Borgarin near Trøllanes (UTM 29 613275 6916660), pastures, 1♀, 520 m, 12.VIII.2012, Jens-Kjeld Jensen leg., CJL-8303; **Streymoy**, Sjúrdarsstíggjur at Skeiðsá (UTM 29 607565 6885915), pastures, 2♀, 365 m, 29.VI.2011, William Simonsen leg., Coll. FMNH; Sjúrdarsstíggjur, Stuttin, at gravel pit (UTM 29 606521 6885882), pastures, 1♀, 340 m, 10.VIII.2014, Jørgen Lissner leg., CJL-10250; Sornfelli north of summit (UTM 29 606392 6884102), fell-field, 1♀, 645–690 m, 26.IX.2015, Dánial Jespersen leg., CJL-10969.

**Diplocephalus cristatus**. A common species in the lowland, now known from eleven islands. The first record from Skúvoy is reported below.

New records: **Skúvoy**, shore (UTM 29 615884 6850591), shore, 1♀, 8 m, 12.VI.2012, William Simonsen leg., Coll. FMNH.

**Diplocephalus permixtus**. Equal common as *Diplocephalus cristatus*, also now known from eleven islands. Here we report the first findings from Skúvoy.

New records: **Skúvoy**, infield (UTM 29 615503 6850596), rich, continually cultivated grasslands, 1♂1♀, 35 m, 25.VI.2012, William Simonsen leg., Coll. FMNH; Skúvoy, outfield (UTM 29 614596 6850567), pastures, 1♀, 190 m, 22.V.2012, William Simonsen leg., Coll. FMNH.

**Drepanotylus uncatius**. An uncommon species known from five islands, but it is probably under collected due to being a winter active species. First record from Vágur.

New records: **Streymoy**, Kirkjubøreyn, trail to

Kirkjubøur (UTM 29 614241 6873871), near pond in pasture, 1♀, 240 m, 08.VIII.2014, Jørgen Lissner leg., CJL-10195; Tórshavn, Mýrilendi (UTM 29 615674 6879021), mire, 1♂, 95 m, 13.VIII.2010, William Simonsen leg., Coll. FMNH; Tórshavn, Nordic House (UTM 29 616185 6878396), rich fen, 2♂4♀, 65 m, 07.VIII.2014, Jørgen Lissner leg., CJL-10191; **Vágar**, Vatnsoyrar, á Fossi at the SE lakeshore of Fjallavatn (UTM 29 589234 6887611), pastures, 1♀, 105 m, 11.VIII.2014, Jørgen Lissner leg., CJL-10152.

**Entelecara errata**. A rare species previously known only from Húsareyn, Streymoy (Holm 1980), but perhaps under-collected due to the special habitat of layered stones or boulders. It can be found in fell-fields where geological processes result in accumulation of layered stones, often as linear elements (“rivers of stones”) in low-lying areas of relatively flat places on the mountain. Here this species can be found among stones, not in the top layer but in cavities deeper down. Fell-field processes are well developed on Húsareyn and Kirkjubøreyn, which are relatively low mountains with flat tops of strongly weathered rocks.

New records: **Streymoy**, Húsareyn (west of Tórshavn) (UTM 29 614002 6878573), in cavities of layered stones, 2♂1♀, 340 m, 12.VIII.2014, Jørgen Lissner leg., CJL-10210; Kirkjubøreyn, near top (UTM 29 615302 6874642), scree slope, 1♂5♀1 juveniles, 320 m, 17.VII.2012, Jørgen Lissner leg., CJL-8321; same locality, 2♀1 juveniles, 18.VI.2010, Jørgen Lissner leg., CJL-6671; Kirkjubøreyn, scree at Keksisskarð (UTM 29 615341 6874719), in cavities of layered stones, 3♀, 315 m, 17.VII.2012, Jørgen Lissner leg., CJL-8348; Kirkjubøreyn, stony area near top 2 (UTM 29 614536 6874337), rocks, 2♀, 347 m, 17.VII.2011, Jørgen Lissner leg., CJL-8301.

**Erigone arctica**. A common species known from eleven islands. Here we report the first record for Nólsoy.

New record: **Nólsoy**, outfield (UTM 29 624500 6871500), pastures, 1♀, 75 m, 19.VIII.2007, Jens-Kjeld Jensen leg., CJL-4279.

**Erigone atra**. Widespread in the Faroes, known from twelve islands. First record for Borðoy.

New record: **Borðoy**, Klaksvik at shipyard (UTM





**FIGURE 4.** *Erigone dentigera* O. P.-Cambridge, 1874, male from Kollafjørður, Streymoy. Photo: J. Lissner.

29 625255 6902134), harbour wasteland, 1 juvenile (matured in captivity), 1 m, 10.VIII.2014, Jørgen Lissner leg., CJL-10167.

\* *Erigone dentigera* (Figure 4). First record for the Faroes at Holmurin in 2008. The species may have been overlooked in the past because of its special habit of building its web on emergent vegetation in flooded meadows and at pond shores. Now known from Eysturoy, Streymoy, and Vágar.

New records: **Eysturoy**, Eiði, Hólmurin, St. 2 (UTM 29 599065 6909139), habitat not known, 1♀, 6 m, 09.VII.2008, William Simonsen leg., Coll. FMNH; Lake Toftavatn at Toftir (UTM 29 619570 6886835), dwarf-shrub heath, 1♂2♀, 35 m, 10.VIII.2014, Jørgen Lissner leg., CJL-10263; **Streymoy**, Kollafjørður (waste ground at Ósin) (UTM 29 607274 6887089), flooded grassland, 1♂1♀, 4 m, 15.VI.2012, Julien Pétilion leg., Coll. FMNH; same locality, 5♂3♀, 10.VIII.2014, Jørgen Lissner leg., CJL-10237; Tórshavn, Mýrilendi (UTM 29 615674 6879021), mire, 1♀, 95 m, 13.VIII.2010, William Simonsen leg., Coll. FMNH; same locality, 3♂1♀, 21.VI.2010, William Simonsen leg., Coll. FMNH; **Vágar**, Vatnsóyrar,

á Fossi at the SE lakeshore of Fjallavatn (UTM 29 589234 6887611), flooded vegetation at stream, 1♂3♀, 105 m, 11.VIII.2014, Jørgen Lissner leg., CJL-10160.

*Erigone promiscua*. A relatively common species in the Faroes known from thirteen islands. We report the first records from Stóra Dímun and Skúvoy .

New records: **Skúvoy**, Ólansgarður (UTM 29 616054 6850088), rich, continually cultivated grasslands, 1♀, 50 m, 21.VIII.2008, Jens-Kjeld Jensen leg., CJL-5157; Skúvoy, Byrgisbakki (UTM 29 615741 6851026), pastures, 1♂1♀, 15 m, 25.VI.2012, William Simonsen leg., Coll. FMNH; Skúvoy, infield (UTM 29 615503 6850596), rich, continually cultivated grasslands, 1♀, 35 m, 12.VI.2012, William Simonsen leg., Coll. FMNH; Skúvoy, outfield (UTM 29 614596 6850567), pastures, 5♂3♀, 190 m, 22.V.2012, William Simonsen leg., Coll. FMNH; **Stóra Dímun**, infield (UTM 29 618688 6841005), rich, continually cultivated grasslands, 3♂4♀, 80 m, 07.VIII.2010, Jens-Kjeld Jensen leg., CJL-6826.



*Erigone psychrophila*. A rather uncommon species found on high ground.

New records: **Borðoy**, Tjúkkhamar (UTM 29 627150 6907550), fell-field, 3♂, 575 m, 10.VIII.2012, Jens-Kjeld Jensen leg., CJL-8414; **Streymoy**, Kirkjubøreyn, lakeshore near top (UTM 29 615232 6874471), Muddy lakeshore, sparsely vegetated, 2♂, 315 m, 17.VII.2012, Jørgen Lissner leg., CJL-8318; Sjúrdarstíggjur, Stuttin, at gravel pit (UTM 29 606521 6885882), pastures, 2♂, 340 m, 10.VIII.2014, Jørgen Lissner leg., CJL-10240; Sornfelli at Varðabrúgv (UTM 29 606720 6884520), fell-field, 1♀1 juveniles, 580 m, 17.VI.2010, Jørgen Lissner leg., CJL-6682; Sornfelli between Flatir and Langaregn (UTM 29 607349 6885660), fell-field, 1♀, 370 m, 19.VII.2011, Jørgen Lissner leg., CJL-8286; Sornfelli north of summit (UTM 29 606392 6884102), fell-field, 1♂, 645–690 m, 26.IX.2015, Dánial Jespersen leg., CJL-10972.

*Erigone tirolensis*. An uncommon high ground species. Here we report the first record from Mykines.

New records: **Eysturoy**, Slættaratindur, common pasture Suðurhelvt (UTM 29 602085 6908640), fell-field, 4♂, 600 m, 26.V.2008, Rodmund á Kelduni leg., CJL-4959; **Mykines**, Knúkur (UTM 29 573971 6886516), steppe and grassland slope, 1♀, 530 m, 28.VI.2008, Jens-Kjeld Jensen leg., CJL-5016; **Streymoy**, Húsareyn (west of Tórshavn) (UTM 29 614002 6878573), scree, 1♀, 340 m, 12.VIII.2014, Jørgen Lissner leg., CJL-10217; Kirkjubøreyn (UTM 29 615302 6874642), scree, 1♂, 320 m, 17.VII.2012, Jørgen Lissner leg., CJL-8325; Sornfelli at Varðabrúgv (UTM 29 606720 6884520), fell-field, 2♂1♀, 580 m, 17.VI.2010, Jørgen Lissner leg., CJL-6681; Sornfelli north of summit (UTM 29 606392 6884102), fell-field, 2♂, 645–690 m, 05.VIII.2014, Jørgen Lissner leg., CJL-10227.

\* *Erigone whymperi* (Figures 5, 6a, b). First record for the Faroes at Sornfelli in 2015. The species is absent from Britain and Iceland and has only recently been found in Norway (Aakra *et al.* 2016). Known from Canada, Greenland, Russia, and Mongolia (Nentwig *et al.* 2016). A detached epigyne of the Faroese specimen is depicted in Figure 6. The specimen measures only 1.93 mm, thus a rather small *Erigone*, about the same size a

small females of *E. atra* and *E. promiscua*.

First record: **Streymoy**, Sornfelli north of summit (UTM 29 606392 6884102), fell-field, 1♀, 645–690 m, 19.IX.2015, Dánial Jespersen/Jens-Kjeld Jensen leg., CJL-10968.

*Gonatium rubens*. A common species known from thirteen islands. Here we report the first records from Eysturoy, Fugloy, Nólsoy, Skúvoy, Vágur, and Víðoy.

New records: **Eysturoy**, Lake Toftavatn (UTM 29 619570 6886835), dwarf-shrub heath, 1♂1♀, 35 m, 13.VIII.2008, Rodmund á Kelduni leg., CJL-5124; Lake Toftavatn, St. 1 (UTM 29 618783 6887577), dwarf-shrub heath, 1♂1♀, 15 m, 04.IX.2009, William Simonsen leg., Coll. FMNH; Lake Toftavatn, St. 3 (UTM 29 618653 6887486), dwarf-shrub heath, 1♂, 16 m, 17.VIII.2009, William Simonsen leg., Coll. FMNH; Lake Toftavatn, St. 5 (UTM 29 618812 6887331), dwarf-shrub heath, 1♀, 19 m, 17.VII.2009, William Simonsen leg., Coll. FMNH; Toftir (UTM 29 618080 6886080), dwarf-shrub heath, 1♂, 20 m, 20.IX.2007, Rodmund á Kelduni leg., CJL-4313; Toftir, Saltnes (UTM 29 617758 6888089), dwarf-shrub heath, 1♀, 15 m, 07.V.2010, Rodmund á Kelduni leg., CJL-6534; **Fugloy** (UTM 29 638600 6913600), pastures, 1♂, 250 m, 28.VIII.2007, Jens-Kjeld Jensen leg., CJL-4275; **Nólsoy**, outfield (UTM 29 624500 6871500), pastures, 2♂2♀, 75 m, 19.VIII.2007, Jens-Kjeld Jensen leg., CJL-4258; **Skúvoy**, Knútur (UTM 29 613326 6850203), pastures, 4♀, 360 m, 25.VI.2012, William Simonsen leg., Coll. FMNH; **Vágur**, Miðvágur, Norði í Líð (UTM 29 592200 6881500), pastures, 2♂, 45 m, 10.IX.2007, Rodmund á Kelduni leg., CJL-4327; Sörvágur, Sunnari Suðurtriðingur (UTM 29 591502 6880984), pastures, 1♂1♀, 100 m, 11.VIII.2014, Jørgen Lissner leg., CJL-10272; **Víðoy**, Inni í Dølum (UTM 29 629112 6914062), dwarf-shrub heath, 1♂1♀, 50–100 m, 18.VIII.2008, Jens-Kjeld Jensen leg., CJL-5146.

*Gongylidiellum vivum*. An uncommon species in the Faroes known from seven islands. Here we report the first findings from Eysturoy.

New records: **Eysturoy**, Lake Toftavatn, St. 1 (UTM 29 618783 6887577), dwarf-shrub heath, 1♂, 15 m, 12.VI.2009, William Simonsen leg., Coll. FMNH; Lake Toftavatn, St. 2 (UTM 29 618682 6887574), dwarf-shrub heath, 1♂, 16 m, 12.VI.2009, William



FIGURE 5. *Erigone whymperi* O. P.-Cambridge, 1877, female from Sornfelli, Streymoy. Photo: J. Lissner.

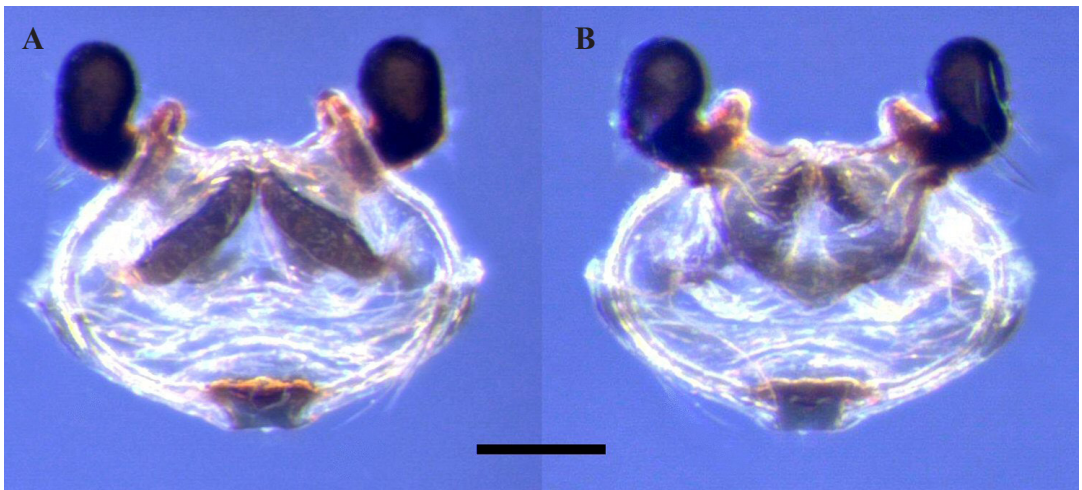


FIGURE 6. Detached epigyne of *Erigone whymperi* O. P.-Cambridge, 1877. A. ventral view, B. dorsal view. Scale bar 0.1 mm. Photo: J. Lissner.

Simonsen leg., Coll. FMNH; Lake Toftavatn, St. 4 (UTM 29 618650 6887313), dwarf-shrub heath, 1♂, 20 m, 17.VIII.2009, William Simonsen leg., Coll. FMNH; **Streymoy**, Tórshavn, rich fen at the Nordic House (UTM 29 616185 6878396), rich fens, 1♀, 65 m, 07.VIII.2014,

Jørgen Lissner leg., CJL-10192; Tórshavn, Hoydalsá (UTM 29 615822 6879362), stream banks, 2♂, 100 m, 13.VIII.2010, William Simonsen leg., Coll. FMNH; same locality, 1♂, 21.VII.2010, William Simonsen leg., Coll. FMNH.

\* *Halorates reprobus*. First record for the Faroes at Tórshavn in 2010. The species is found along seacoasts that are temporarily flooded with salt water. The very special habitat requirement may explain why this species has been overlooked in previous investigations.

New records: **Borðoy**, Klaksvík at shipyard (UTM 29 625255 6902134), harbour wasteland, 1♀, 1 m, 10.VIII.2014, Jørgen Lissner leg., CJL-10164; **Streymoy**, Kirkjubøur (UTM 29 615760 6870890), boat ramp, 1♂, 10 m, 05.VIII.2014, Jørgen Lissner leg., CJL-10199; Tórshavn, mouth of river Sandá (UTM 29 616387 6876158), pebble or gravel coast, 1♀, 2 m, 22.VIII.2010, Jens-Kjeld Jensen leg., CJL-6814; **Suðuroy**, Drelnes (UTM 29 616036 6825701), harbour wasteland, 1♀, 0 m, 16.VII.2012, Jørgen Lissner leg., CJL-8269; Tvøroyri (UTM 29 616265 6826515), harbour wasteland, 1♂, 5 m, 16.VII.2012, Jørgen Lissner leg., CJL-8268.

*Hilaira nubigena*. Very rare and local distributed species in the Faroes. Previously recorded once on Middagsfjall, Eysturoy (Holm 1980). Here we report an additional locality on Streymoy.

New records: **Streymoy**, Sjørðarsstíggjur at Skeiðsá (UTM 29 607565 6885915), pastures, 2♂2♀, 365 m, 03.IX.2011, William Simonsen leg., Coll. FMNH; same locality, 2♂, 365 m, 29.VI.2011, William Simonsen leg., Coll. FMNH; Same locality, 2♂2♀, 06.IX.2014, Jens-Kjeld Jensen leg., CJL-10228.

*Hypomma bituberculatum*. A rare and local species in the Faroes. A single male was found at Eiðisvatn, Eysturoy in 1981 (Bengtson *et al.* 2004). Here we report a first record from Sandoy.

New record: **Sandoy**, Skúvoyarfjall (UTM 29 622090 6850085), wet area with *Racomitrium* mosses, 4♀, 300 m, 13.VI.2010, Jørgen Lissner leg., CJL-6745.

*Improphantes complicatus*. A high ground species with a very local distribution but also sometimes numerous.

New records: **Streymoy**, Sornfelli north of summit (UTM 29 606392 6884102), fell-field, 1♂1♀, 645-690 m, 05.VIII.2014, Jørgen Lissner leg., CJL-10221; same locality 2♀1 juveniles, 18.VII.2011, Jørgen Lissner leg., CJL-8287; same locality 2♀, 28.V.2016, Jens-Kjeld Jensen leg., CJL-11530.

*Lepthyphantes leprosus*. This species is found in houses, stables etc., sometimes on the outside. Not recorded since 1926, but later investigations did not focus on sampling houses. Here we report several new findings and the first from Stóra Dímun and Vágar.

New records: **Stóra Dímun**, buildings (UTM 29 618738 6841149), unheated rooms, 1♂1♀, 95 m, 07.VIII.2010, Jens-Kjeld Jensen leg., CJL-6831; **Streymoy**, Sund north of Tórshavn (UTM 29 612625 6881510), sheep stable, 2♂2♀, 42 m, 12.VI.2010, Jørgen Lissner leg., CJL-6737; Tórshavn (UTM 29 616469 6877530), outside of building, 1♀, 30 m, 08.VIII.2014, Jørgen Lissner leg., CJL-10177; **Vágar**, Sörvágur (UTM 29 588500 6883350), garden, 1♀, 20 m, 01.IV.2007, Rodmund á Kelduni leg., CJL-4098.

*Leptorhoptrum robustum*. A common and widespread species known from all islands except Lítla Dímun and Stóra Dímun.

*Mecynargus morulus*. A common species now known from twelve islands. Here we report the first records from Fugloy, Kalsoy, Sandoy, and Skúvoy.

New records: **Fugloy** (UTM 29 638600 6913600), pastures, 1♂, 250 m, 28.VIII.2007, Jens-Kjeld Jensen leg., CJL-4271; **Kalsoy**, Borgarin near Trøllanes (UTM 29 613275 6916660), pastures, 1♂1♀, 520 m, 12.VIII.2012, Jens-Kjeld Jensen leg., CJL-8416; **Sandoy**, Skúvoyarfjall (UTM 29 622090 6850085), dwarf-shrub heath, 2♂, 300 m, 13.VI.2010, Jørgen Lissner leg., CJL-6749; **Skúvoy**, Knútur (UTM 29 613326 6850203), pastures, 2♂6♀, 360 m, 12.VII.2012, William Simonsen leg., Coll. FMNH.

\* *Microlinyphia pusilla* (Figure 7). First record for the Faroes at Lake Toftavatn, Eysturoy in 2008. It was also found on Vágar in 2014.

New records: **Eysturoy**, Lake Toftavatn at Toftir (UTM 29 619570 6886835), dwarf-shrub heath, 3♂2♀2 juveniles, 35 m, 08.VII.2008, Rodmund á Kelduni leg., CJL-5020; same locality, 1♂1♀, 10.VIII.2014, Jørgen Lissner leg., CJL-10259; same locality, 1♀1 juveniles, 14.VI.2010, Jørgen Lissner leg., CJL-6725; same locality, 2♂1♀1 juvenile, 18.VII.2012, Jørgen Lissner leg., CJL-8308; Toftir, Saltnes (UTM 29 617758 6888089), dwarf-shrub heath, 3♀1 juvenile, 15 m,





**FIGURE 7.** *Microlinyphia pusilla* (Sundevall, 1830), male from Lake Toftavatn, Eysturoy. Photo: J. Lissner.

07.V.2010, Rodmund á Kelduni leg., CJL-6535; **Vágar**, Vatnsøyra, á Fossi at the SE lakeshore of Fjallavatn (UTM 29 589234 6887611), pastures, 1♀, 105 m, 11.VIII.2014, Jørgen Lissner leg., CJL-10149.

***Monocephalus fuscipes***. A common species of the northern islands but seemingly absent from the southern islands.

New records: **Eysturoy**, Gjógv gorge (UTM 29 606715 6912642), urban area, outdoors, 2♀1 juvenile, 5 m, 06.VIII.2014, Jørgen Lissner leg., CJL-10172; **Kunoy**, outfield at the northern outskirts of the village (UTM 29 620516 6909442), pastures, 3♀, 60-140 m, 19.VII.2012, Jørgen Lissner leg., CJL-8360.

***Mughiphantes whymeri***. A rare or perhaps overlooked species in the Faroes. Previously known only from Havnardalur, Streymoy and Urðarfjall, Kunoy (Bengtson *et al.* 2004). Primarily a high ground species. Here we report the first record from Borðoy.

New records: **Borðoy**, Depilsknúkur (UTM 29 627424 6907267), fell-field, 1♂2 juveniles, 680 m,

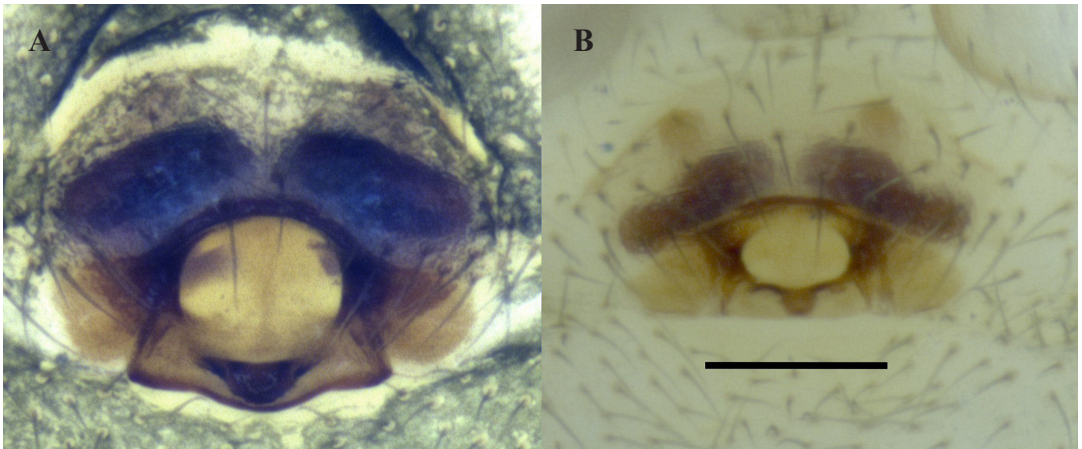
10.VIII.2012, Jens-Kjeld Jensen leg., CJL-8375; **Streymoy**, Kirkjubøreyn, Keksisskarð (UTM 29 615341 6874719), scree, 4♀3 juveniles, 315 m, 17.VII.2012, Jørgen Lissner leg., CJL-8350; Sornfelli north of summit (UTM 29 606392 6884102), fell-field, 1♀, 645-690 m, 28.V.2016, Jens-Kjeld Jensen leg., CJL-11529.

***Neriene montana***. The single specimen was found outside its habitat in a trading center. Not considered a member of the Faroese fauna. Absent from the northernmost Scotland, Orkney and Shetland (Harvey *et al.* 2002) and breeding in the Faroes may seem unlikely.

Record: **Streymoy**, Tórshavn, trading center SMS (UTM 29 616502 6877775), indoors, 1♂, 38 m, 01.IV.2003, Dánial Jespersen leg., CJL-3933.

***Oreoneta frigida***. A very common species known from all islands except Stóra Dímun and Víðoy.

***Oreonetides vaginatus***. A local species, mostly found on high ground. Here we report the first



**FIGURE 8.** Epigynes. **A.** *Porrhomma campbelli* F. O. P.-Cambridge, 1894, **B.** *Porrhomma pallidum* Jackson, 1913. Scale bar 0.1 mm. Photo: J. Lissner.

records from Borðoy and Vágur.

New records: **Borðoy**, Tjúkhamar (UTM 29 627150 6907550), fell-field, 1♀, 575 m, 10.VIII.2012, Jens-Kjeld Jensen leg., CJL-8413. **Vágur**, Sørvágur, Norðurtriðingur (UTM 29 588300 6884500), rocks, 1♀, 400 m, 22.IV.2008, Rodmund á Kelduni leg., CJL-4770.

***Ostearius melanopygius***. Previously recorded from Borðoy, Eysturoy, Kunoy, and Víðoy (Bengtson *et al.* 2004).

***Palliduphantes ericaeus***. A common and widespread species known from twelve islands. Here we report the first findings from Hestur, Sandoy, and Skúvoy.

New records: **Hestur** (UTM 29 610715 6870842), steppe and grassland slope, 1♀, 200 m, 28.VI.2009, Jens-Kjeld Jensen leg., CJL-5842; **Sandoy**, Skúvoyarfjall (UTM 29 622090 6850085), dwarf-shrub heath, 1♀, 300 m, 13.VI.2010, Jørgen Lissner leg., CJL-6752; **Skúvoy**, Byrgisbakki (UTM 29 615741 6851026), pastures, 2♂1♀, 15 m, 25.VI.2012, William Simonsen leg., Coll. FMNH; Skúvoy, Knútur (UTM 29 613326 6850203), pastures, 1♀, 360 m, 16.VIII.2012, William Simonsen leg., Coll. FMNH; Skúvoy, shore (UTM 29 615884 6850591), shore, 2♂1♀, 8 m, 12.VI.2012, William Simonsen leg., Coll. FMNH.

***Poecilometes variegata***. A local but widespread species now known from twelve islands. The

species seems rarer in the north. Here we report the first records from Hestur, Skúvoy, and Vágur.

New records: **Hestur** (UTM 29 610715 6870842), steppe and grassland slope, 1♀, 200 m, 28.VI.2009, Jens-Kjeld Jensen leg., CJL-5840; **Skúvoy**, Skorarbrekkan (UTM 29 615456 6848535), steppe and grassland slope, 1♂1♀, 200 m, 21.VIII.2008, Jens-Kjeld Jensen leg., CJL-5152. **Vágur**, Sørvágur, Úttriðingur, (UTM 29 587360 6882170), pastures, 1♀, 200 m, 07.V.2008, Rodmund á Kelduni leg., CJL-4892; Sørvágur, Ytri Suðurtriðingur (UTM 29 589900 6881050), pastures, 1♀, 90 m, 13.XI.2007, Rodmund á Kelduni leg., CJL-4370; Sørvágur, outfield at Hotel 62N (UTM 29 589580 6883175), dwarf-shrub heath, 1♀, 100 m, 22.VII.2012, Jørgen Lissner leg., CJL-8335; Vatnsoyrar, á Fossi at the SE lakeshore of Fjallavatn (UTM 29 589234 6887611), pastures, 1♂, 105 m, 11.VIII.2014, Jørgen Lissner leg., CJL-10153.

\* ***Porrhomma campbelli***. First record for the Faroes from Skúvoy in 2012. The epigyne is depicted in Figure 8a. A previous record of *P. egeria* from Víðoy may conform to this species (see comments for *P. egeria*).

First record: **Skúvoy**, infield (UTM 29 615503 6850596), rich, continually cultivated grasslands, 1♀, 35 m, 25.VI.2012, William Simonsen leg., Coll. FMNH.

***Porrhomma convexum***. A fairly common but local species mostly found at low elevations. Previously known from seven islands (Bengtson



et al. 2004). Here we report the species from one additional island, Skúvoy.

New record: **Skúvoy**, shore (UTM 29 615884 6850591), shore, 2♂1♀, 8 m, 25.VI.2012, William Simonsen leg., Coll. FMNH.

? **Porrhomma egeria**. Previously recorded from Dalá, Víðoy Bengtson & Hauge 1979). Only one specimen has been collected in the Faroes, a female with reduced eyes found among heather. The specimen was reported to lack one of the two prolateral spines on femur I diagnostic for the species. It is possible their specimen is a misidentified *Porrhomma campbelli*, a species also with more or less reduced eyes and with just one prolateral spine on femur I as found for Bengtson and Hauges specimen. In 1979, it was difficult to identify *Porrhomma* species, a task that has become less problematic with the emergence of new literature on the genus. It was not possible to locate the specimen in Lund or Bergen. Until the specimen has been re-examined, it is maintained on the checklist.

**Porrhomma montanum**. Uncommon, found at all elevations but mostly on high ground. Known only from three islands (Bengtson et al. 2004).

New records: **Eysturoy**, Slættaratindur, common pasture Suðurhelvt (UTM 29 602085 6908640), fell-field, 1♂, 600 m, 26.V.2008, Rodmund á Kelduni leg., CJL-4961; **Streymoy**, Húsareyn (west of Tórshavn) (UTM 29 614002 6878573), rock steppe, 1♀, 340 m, 14.VI.2010, Jørgen Lissner leg., CJL-6690; Sornfelli at Varðabrúgv (UTM 29 606720 6884520), fell-field, 5♀, 580 m, 17.VI.2010, Jørgen Lissner leg., CJL-6677; Tórshavn, Lyngøki (UTM 29 615824 6879377), dwarf-shrub heath, 1♀, 100 m, 31.VII.2009, William Simonsen leg., Coll. FMNH.

\* **Porrhomma pallidum**. First record for the Faroes from Streymoy in 2014.

The only known specimen was found in natural habitat under a stone on high ground. It is therefore added to the Faroese checklist even though breeding is not confirmed. The species is widespread in Great Britain but records are more scattered in the south (Harvey et al. 2002). Femur I with one prolateral and one dorsal spine. The

epigyne is depicted in Figure 8b.

First record: **Streymoy**, Sornfelli north of summit (UTM 29 606392 6884102), fell-field, 1♀, 645-690 m, 05.VIII.2014, Jørgen Lissner leg., CJL-10222.

**Saaristoa abnormis**. A common and widespread species now known from fourteen islands. Here we report the first records from Hestur, Nólsoy and Skúvoy.

New records: **Hestur**, outskirts of village (UTM 29 611150 6870767), rich, continually cultivated grasslands, 2♀, 50 m, 28.VI.2009, Jens-Kjeld Jensen leg., CJL-5846; **Nólsoy**, outfield (UTM 29 624500 6871500), pastures, 1♀, 75 m, 19.VIII.2007, Jens-Kjeld Jensen leg., CJL-4254; **Skúvoy**, Skorarbrekkan (UTM 29 615456 6848535), grassland slope, 1♀, 200 m, 21.VIII.2008, Jens-Kjeld Jensen leg., CJL-5148.

**Savignia frontata**. A common species now known from fourteen islands. New island records from Skúvoy and Stóra Dímun are reported here.

New records: **Skúvoy**, Byrgisbakki (UTM 29 615741 6851026), pastures, 1♂4♀, 15 m, 25.VI.2012, William Simonsen leg., Coll. FMNH; Skúvoy, infield (UTM 29 615503 6850596), rich, continually cultivated grasslands, 13♂2♀, 35 m, 12.VI.2012, William Simonsen leg., Coll. FMNH; Skúvoy, outfield (UTM 29 614596 6850567), pastures, 3♂1♀, 190 m, 22.V.2012, William Simonsen leg., Coll. FMNH; Skúvoy, shore (UTM 29 615884 6850591), shore, 10♂8♀, 8 m, 12.VI.2012, William Simonsen leg., Coll. FMNH; **Stóra Dímun**, infield (UTM 29 618688 6841005), rich, continually cultivated grasslands, 1♂1♀, 80 m, 07.VIII.2010, Jens-Kjeld Jensen leg., CJL-6828.

**Scotinotylus evansi**. Uncommon with a peculiar distribution: southern Streymoy, northern Eysturoy and with a single record from Kunoy.

New records: **Eysturoy**, Slættaratindur, common pasture Suðurhelvt (UTM 29 602085 6908640), fell-field, 1♂2♀, 600 m, 26.V.2008, Rodmund á Kelduni leg., CJL-4956; **Streymoy**, Húsareyn, west of Tórshavn (UTM 29 614002 6878573), rock steppe, 3♀, 340 m, 12.VIII.2014, Jørgen Lissner leg., CJL-10216; Kirkjubøreyn, near top (UTM 29 615302 6874642), open scree slope, 1♀, 320 m, 17.VII.2012, Jørgen Lissner leg., CJL-8326; Kirkjubøreyn, Keksisskarð (UTM 29 615341 6874719), scree, 2♀, 315 m, 17.VII.2012,

Jørgen Lissner leg., CJL-8349; Kirkjubøreyn, stony area near top (UTM 29 614536 6874337), rocks, 1♀, 347 m, 17.VII.2011, Jørgen Lissner leg., CJL-8346.

***Semljicola faustus***. Uncommon, now known from five islands. Here we report the first findings from Kalsoy and Vágur.

New records: **Kalsoy**, Borgarin near Trøllanes (UTM 29 613275 6916660), pastures, 1♀, 520 m, 12.VIII.2012, Jens-Kjeld Jensen leg., CJL-8417; **Streymoy**, Sjúrdarsstíggjgur at Skeiðsá (UTM 29 607565 6885915), pastures, 1♂, 365 m, 03.IX.2011, William Simonsen leg., Coll. FMNH; Tórshavn, City Park (Viðarlundin) (UTM 29 616211 6877974), park with heather, grass, bushes and trees, 1♀, 50 m, 21.VII.2012, Jørgen Lissner leg., CJL-8259; Tórshavn, Lyngøki (UTM 29 615824 6879377), dwarf-shrub heath, 1♂, 100 m, 08.VII.2009, William Simonsen leg., Coll. FMNH; Tórshavn, fen at the Nordic House (UTM 29 616185 6878396), rich fens, 1♂5♀, 65 m, 07.VIII.2014, Jørgen Lissner leg., CJL-10193; Tórshavn, Hoydalsá (UTM 29 615822 6879362), stream bank, 1♂, 100 m, 21.VII.2010, William Simonsen leg., Coll. FMNH; **Vágur**, Sørvágur, Úttriðingur, (UTM 29 587360 6882170), pasture, 1♂, 200 m, 07.V.2008, Rodmund á Kelduni leg., CJL-4895; Vatnsøyarr, á Fossi at the SE lakeshore of Fjallavatn (UTM 29 589234 6887611), pasture, 2♂2♀, 105 m, 11.VIII.2014, Jørgen Lissner leg., CJL-10159.

\* ***Silometopus ambiguus***. First record for the Faroes from Mølheggjar, Sandoy in 2008. A rare species of sandy habitats at the coast. Now known from two islands.

New records: **Sandoy**, sand dune at Mølheggjar (UTM 29 615390 6858040), coastal dunes, 2♂, 3 m, 12.IX.2008, Jens-Kjeld Jensen leg., CJL-5235; same locality, 1♀, 12.VIII.2009, Jens-Kjeld Jensen leg., CJL-5722; same locality, 4♀, 13.VI.2010, Jørgen Lissner leg., CJL-6740; **Streymoy**, Sandagerð (UTM 29 616370 6876240), sandy beach, 1♀, 2 m, 12.VI.2011, Jens-Kjeld Jensen leg., CJL-7773.

***Tenuiphantes mengei***. This is the less common species among the three Faroese *Tenuiphantes*. Here we report the first findings from Fugloy, Nólsoy, Sandoy, and Vágur.

New records: **Fugloy**, infield at the village of

Kirkja (UTM 29 638895 6912687), rich, continually cultivated grasslands, 1♂1♀, 75 m, 23.IX.2008, Jens-Kjeld Jensen leg., CJL-5224; **Nólsoy**, outfield (UTM 29 624500 6871500), pastures, 2♀, 75 m, 19.VI.2010, Jørgen Lissner leg., CJL-6759; **Sandoy**, Mølheggjar (UTM 29 615390 6858040), coastal dunes, 2♂4♀, 3 m, 15.VII.2012, Jørgen Lissner leg., CJL-8343; **Vágur**, Sørvágur, Ytri Suðurtriðingur (UTM 29 589900 6881050), pastures, 1♂, 250 m, 13.XI.2007, Rodmund á Kelduni leg., CJL-4371; same locality, 1♀, 28.VIII.2007, Rodmund á Kelduni leg., CJL-4280.

***Tenuiphantes tenuis***. A fairly common and widespread species in the Faroes, but only rarely encountered at higher altitudes. Here we report the species from Skúvoy, Vágur, and Víðoy for the first time.

New records: **Skúvoy**, Ólansgarður (UTM 29 616054 6850088), rich, continually cultivated grasslands, 1♂2 juveniles, 50 m, 21.VIII.2008, Jens-Kjeld Jensen leg., CJL-5156; Skúvoy, Byrgisbakki (UTM 29 615741 6851026), pastures, 1♂1♀, 15 m, 01.VIII.2012, William Simonsen leg., Coll. FMNH; Skúvoy, infield (UTM 29 615503 6850596), rich, continually cultivated grasslands, 6♂4♀, 35 m, 12.VI.2012, William Simonsen leg., Coll. FMNH; Skúvoy, shore (UTM 29 615884 6850591), shore, 6♂3♀, 8 m, 12.VI.2012, William Simonsen leg., Coll. FMNH; **Vágur**, Sørvágur, Niðri á Sandi (UTM 29 588216 6883417), sandy beach, 2♂, 1 m, 02.IX.2010, Rodmund á Kelduni leg., CJL-6915; Sørvágur, Ytri Suðurtriðingur (UTM 29 589900 6881050), pastures, 1♀, 82 m, 03.IX.2007, Rodmund á Kelduni leg., CJL-4341; Sørvágur (UTM 29 588500 6883350), garden, 1♀, 20 m, 16.IV.2006, Rodmund á Kelduni leg., CJL-3967; **Víðoy**, Inni í Dølum (UTM 29 629112 6914062), dwarf-shrub heath, 2♀, 50-100 m, 18.VIII.2008, Jens-Kjeld Jensen leg., CJL-5147.

***Tenuiphantes zimmermanni***. A common and widespread species in the Faroes, less common at higher altitudes. Now known from 17 islands, only unrecorded from Lítla Dímun. Here we report the first records from Skúvoy.

New records: **Skúvoy**, Skorarbrekkan (UTM 29 615456 6848535), grassland slope, 1♀, 200 m, 21.VIII.2008, Jens-Kjeld Jensen leg., CJL-5153; Skúvoy, Byrgisbakki (UTM 29 615741 6851026),

pastures, 1♂, 15 m, 22.V.2012, William Simonsen leg., Coll. FMNH; Skúvoy, infield (UTM 29 615503 6850596), rich, continually cultivated grasslands, 1♀, 35 m, 20.IX.2014, Jens-Kjeld Jensen leg., CJL-10140; Skúvoy, Knútur (UTM 29 613326 6850203), pastures, 1♀, 360 m, 12.IX.2012, William Simonsen leg., Coll. FMNH; Skúvoy, shore (UTM 29 615884 6850591), shore, 1♀, 8 m, 22.V.2012, William Simonsen leg., Coll. FMNH.

***Tiso aestivus***. No new records. Previously recorded from one locality each on Streymoy (Húsareyn, 340 m) and Eysturoy (Hornfjall, 750 m) according to Holm (1980).

***Tiso vagans***. A widespread species but found in low numbers, now known from 11 islands. Here we report the first findings from Fugloy and Skúvoy.

New records: **Fugloy** (UTM 29 638600 6913600), pastures, 1♀, 250 m, 28.VIII.2007, Jens-Kjeld Jensen leg., CJL-4268; **Skúvoy**, infield (UTM 29 615503 6850596), rich grassland, 2♂, 35 m, 25.VI.2012, William Simonsen leg., Coll. FMNH.

† ***Tmeticus affinis***. This species has only been reported once from the Faroe Islands and once from Iceland (Simon 1898) and never found again in any of the two countries. It was reported with *Bolephthyphantes index*, a species that also never have been found again in the Faroes. Presence of *T. affinis* in both countries is doubtful due to the habitat preferences, which are not met in the Faroes and unlikely considering the known distribution of the species, which is clearly to the south of the Faroes. The species is therefore deleted from the checklist.

***Walckenaeria antica***. Previously known from five islands, here we report the species from two additional islands, Nólsoy and Skúvoy.

New records: **Nólsoy**, Berghamar (UTM 29 622003 6876022), *Sphagnum* community, 1♀, 45 m, 16.VIII.2008, Jens-Kjeld Jensen leg., CJL-5131; **Skúvoy**, infield (UTM 29 615503 6850596), rich, continually cultivated grasslands, 1♂1♀, 35 m, 20.IX.2014, Jens-Kjeld Jensen leg., CJL-10134.

***Walckenaeria clavicornis***. Perhaps the commonest *Walckenaeria* in the Faroes now known from eleven islands. Here we report the first findings from Skúvoy.

New records: **Skúvoy**, outfield (UTM 29 614596 6850567), pastures, 1♂1♀, 190 m, 22.V.2012, William Simonsen leg., Coll. FMNH; Skúvoy, Knútur (UTM 29 613326 6850203), pastures, 2♂2♀, 360 m, 12.VII.2012, William Simonsen leg., Coll. FMNH.

***Walckenaeria cuspidata***. An uncommon species previously known from five islands. Here we report the species from one additional island, Hestur.

New records: **Eysturoy**, Lake Toftavatn, St. 4 (UTM 29 618650 6887313), dwarf-shrub heath, 1♂, 20 m, 04.IX.2009, William Simonsen leg., Coll. FMNH; Lake Toftavatn, St. 6 (UTM 29 619018 6887577), dwarf-shrub heath, 1♀, 16 m, 01.VII.2009, William Simonsen leg., Coll. FMNH; **Hestur**, outskirts of village (UTM 29 611150 6870767), rich, continually cultivated grasslands, 1♀, 50 m, 28.VI.2009, Jens-Kjeld Jensen leg., CJL-5845; **Sandoy**, Skúvoyarfjall (UTM 29 622090 6850085), dwarf-shrub heath, 1♀, 300 m, 13.VI.2010, Jørgen Lissner leg., CJL-6748; **Streymoy**, Sjúrdarsstíggjur at Skeiðsá (UTM 29 607565 6885915), pastures, 1♂1♀, 365 m, 06.IX.2014, Jens-Kjeld Jensen leg., CJL-10229; Sjúrdarsstíggjur, Stuttin, at gravel pit (UTM 29 606521 6885882), pastures, 1♀, 340 m, 10.VIII.2014, Jørgen Lissner leg., CJL-10245; Tórshavn, City Park (Viðarlundin) (UTM 29 616211 6877974), park, 1♀, 50 m, 18.VI.2010, Jørgen Lissner leg., CJL-6712; Tórshavn, City Park (Viðarlundin) (UTM 29 616211 6877974), park, 1♀, 50 m, 21.VII.2012, Jørgen Lissner leg., CJL-8261; Tórshavn, Lyngøki (UTM 29 615824 6879377), dwarf-shrub heath, 1♀, 100 m, 17.VII.2009, William Simonsen leg., Coll. FMNH; Tórshavn, Mýrilendi (UTM 29 615674 6879021), mire, 1♀, 95 m, 01.VIII.2010, William Simonsen leg., Coll. FMNH.

***Walckenaeria nodosa***. A rare species only known from Eysturoy and Streymoy (Bengtson et al. 2004). Here we report a second locality on Eysturoy at Lake Toftavatn.

New record: **Eysturoy**, Lake Toftavatn, St. 5 (UTM 29 618812 6887331), dwarf-shrub heath, 1♀, 19 m, 17.VII.2009, William Simonsen leg., Coll. FMNH.

*Walckenaeria nudipalpis*. A widespread but thinly distributed species now known from nine islands. The first records from Kalsoy and Hestur are reported here.

New records: **Hestur** (UTM 29 610715 6870842), steppe and grassland slope, 1♀, 200 m, 28.VI.2009, Jens-Kjeld Jensen leg., CJL-5841; **Kalsoy**, Húsar, outfield (UTM 29 617426 6909570), dwarf-shrub heath, 1♀, 150 m, 03.VI.2009, Jens-Kjeld Jensen leg., CJL-5556.

† *Walckenaeria obtusa*. A female of this species was collected on 22 August 1912 on the mountain of Kirkjubøreyn south of Tórshavn (Schenkel 1925) and it has not been recorded since. The epigyne of this species is very similar to that of *W. nudipalpis*, which has been collected on several occasions in the Tórshavn area, including on Kirkjubøreyn. Schenkel himself did also identify a *W. nudipalpis* male from the Tórshavn harbour area. Schenkel may have misidentified a *W. nudipalpis* female or he could have recorded a stray specimen of *W. obtusa*. The specimen could not be located in the collections of the Natural History Museum of Basel (Ambros Hänggi personal communication) for verification. In Britain the species is considered a woodland species, widespread in the southern parts but scarce in the north (Harvey *et al.* 2002). Occurrence in the Faroes is thus unlikely. The record is assumed either misidentified or accidental and the species is deleted from the checklist.

*Alopecosapulverulenta*. Seemingly an uncommon and local species. Previously known only from three islands. Here we report the species from five additional islands, Kalsoy, Kunoy, Nólsoy, Streymoy, and Viðoy. The single specimen from Streymoy was found indoors indicating that it may have been introduced, however the area in which Hoyvík is situated seem suitable habitat for the species.

New records: **Eysturoy**, Lake Toftavatn at Toftir (UTM 29 619570 6886835), dwarf-shrub heath, 1 juvenile, 35 m, 13.VIII.2008, Jens-Kjeld Jensen leg., CJL-5128; Rúnavík, outdoors in settlement (UTM 29 618876 6888667), urban area, outdoors, 1♂, 15 m, 04.VI.2009, Marius Sørensen leg., CJL-5563;

Lake Toftavatn, St. 1 (UTM 29 618783 6887577), dwarf-shrub heath, 5♂1♀, 15 m, 12.VI.2009, William Simonsen leg., Coll. FMNH; Lake Toftavatn, St. 2 (UTM 29 618682 6887574), dwarf-shrub heath, 2♂, 16 m, 07.VII.2009, William Simonsen leg., Coll. FMNH; Lake Toftavatn, St. 3 (UTM 29 618653 6887486), dwarf-shrub heath, 15♂2♀, 16 m, 12.VI.2009, William Simonsen leg., Coll. FMNH; Lake Toftavatn, St. 4 (UTM 29 618650 6887313), dwarf-shrub heath, 5♀, 20 m, 12.VI.2009, William Simonsen leg., Coll. FMNH; Eysturoy, Lake Toftavatn, St. 5 (UTM 29 618812 6887331), dwarf-shrub heath, 1♂, 19 m, 17.VII.2009, William Simonsen leg., Coll. FMNH; Lake Toftavatn, St. 6 (UTM 29 619018 6887577), dwarf-shrub heath, 6♂, 16 m, 12.VI.2009, William Simonsen leg., Coll. FMNH; **Kalsoy**, Bláskorar (UTM 29 618168 6906920), grassland slope, 1♀, 145 m, 24.V.2008, Jóannis Joensen leg., CJL-4929; Húsar (UTM 29 617426 6909570), dwarf-shrub heath, 1♂1♀, 150 m, 20.VI.2010, Dánial Jespersen leg., CJL-7423; **Kunoy**, northern outskirts of the village (UTM 29 620516 6909442), pasture, 1 juvenile, 60–140 m, 19.VII.2012, Jørgen Lissner leg., CJL-8353; **Nólsoy**, outfield (UTM 29 624500 6871500), pastures, 1♂, 75 m, 19.VI.2010, Jørgen Lissner leg., CJL-6755; Lake Steinavatn near the southern tip of Nólsoy (UTM 29 624450 6871425), dwarf-shrub heath, 1 juvenile, 70 m, 01.VIII.2012, Jens-Kjeld Jensen leg., CJL-8411; **Streymoy**, Hoyvík (UTM 29 616112 6880066), indoors, 1♂, 100 m, 07.VI.2009, Dánial Jespersen leg., CJL-7425; **Vágur**, Sörvágur, Ytri Suðurtriðingur (UTM 29 589900 6881050), pasture, 1 juvenile, 70 m, 28.VII.2008, Rodmund á Kelduni leg., CJL-5025; **Viðoy**, Villingadalsfjall, Ovari Svarthamar (UTM 29 626698 6917979), dwarf-shrub heath, 1♀, 250 m, 08.X.2008, Dánial Jespersen leg., CJL-5231.

*Arctosa alpigena*. Previously found once at Sund, Streymoy (Bengtson *et al.* 2004). The specimen was examined again in this study and an illustration of the male palp is produced (Figure 3b). Apparently, the species is very rare or local in the Faroes, as no further specimens have been found in later searches near Sund.

*Pardosa palustris*. A local but common species now known from eight islands. The first records from Fugloy and Nólsoy are listed below.

New records: **Fugloy** (UTM 29 638600 6913600),



pastures, 1♂, 250 m, 06.VI.2010, Dánial Jespersen leg., CJL-6761; **Nólsoy**, Borðan (UTM 29 624340 6871540), *Sphagnum* community, 2♀, 75 m, 03.VI.2013, Jens-Kjeld Jensen leg., CJL-9098; Nólsoy, outfield (UTM 29 624500 6871500), pastures, 4♂5♀, 75 m, 19.VI.2010, Jørgen Lissner leg., CJL-6756.

***Pardosa sphagnicola***. Uncommon and local, the distribution is restricted to three areas with presence of heather.

New records: **Streymoy**, Tórshavn, Lyngøki (UTM 29 615824 6879377), dwarf-shrub heath, 18♂14♀, 100 m, 08.VII.2009, William Simonsen leg., Coll. FMNH; Tórshavn, City Park (Viðarlundin) (UTM 29 616215 6877879), park, 1♂20♀, 47 m, 31.VII.2009, William Simonsen leg., Coll. FMNH; Tórshavn, Hoydalsá (UTM 29 615822 6879362), stream banks, 20♂19♀, 100 m, 21.VII.2010, William Simonsen leg., Coll. FMNH; **Vágar**, Sørvágur, Ytri Suðurtriðingur (UTM 29 589900 6881050), pasture, 1♂, 68 m, 13.V.2008, Rodmund á Kelduni leg., CJL-4911.

***Pardosa trilli***. Previously recorded only once (1♀, 27 July 1912) on Kirkjubøreyn south of Tórshavn, Streymoy (Schenkel 1925). Schenkel produced an illustration of the epigyne that leaves no doubt about the identity of the species. It has been searched for on several occasions on this mountain but unrecorded since. The species is thus either very rare, very local or extinct.

***Pirata piraticus***. A fairly common and widespread species. Previously known from six islands, here we report the species from the seventh, Nólsoy.

New records: **Nólsoy**, Borðan (UTM 29 624340 6871540), *Sphagnum* community, 1♀, 75 m, 20.VII.2008, Rodmund á Kelduni leg., CJL-5023; Lake Steinavatn near the southern tip of Nólsoy (UTM 29 624450 6871425), dwarf-shrub heath, 1♂1♀, 70 m, 01.VIII.2012, Jens-Kjeld Jensen leg., CJL-8410.

***Trochosa terricola***. An uncommon and local species known from six islands.

New records: **Eysturoy**, Lake Toftavatn at Toftir (UTM 29 619570 6886835), dwarf-shrub heath, 2♂1♀, 35 m, 10.VIII.2014, Jørgen Lissner leg., CJL-10252; Lake Toftavatn, St. 2 (UTM 29 618682 6887574), dwarf-shrub heath, 1♂, 16 m, 12.VI.2009, William

Simonsen leg., Coll. FMNH; Lake Toftavatn, St. 3 (UTM 29 618653 6887486), dwarf-shrub heath, 1♀, 16 m, 01.VII.2009, William Simonsen leg., Coll. FMNH; Lake Toftavatn, St. 6 (UTM 29 619018 6887577), dwarf-shrub heath, 3♂2 juveniles, 16 m, 17.VIII.2009, William Simonsen leg., Coll. FMNH; **Suðuroy**, Tvøroyri, Viðarlundin (UTM 29 613420 6827425), park, 1♀, 40 m, 16.IV.2008, Rodmund á Kelduni leg., CJL-4728; **Vágar**, Sørvágur, Sunnari Suðurtriðingur (UTM 29 591502 6880984), pastures, 1♀, 100 m, 11.VIII.2014, Jørgen Lissner leg., CJL-10267.

***(Philodromus sp.)***. A juvenile specimen was found in Nólsoy village in 2007. Probably introduced with goods from Denmark, perhaps a Christmas tree.

Record: **Nólsoy**, village (UTM 29 624340 6871540), outdoors, 1 juveniles, 15 m, 19.XII.2007, Jane Holm leg., CJL-3893.

***Pholcus phalangioides***. Recorded for the first time in the Faroes in 1989. Since then it has been regularly collected indicating this synanthropic spider is well established. The first record from Sandoy is listed below.

New records: **Eysturoy**, Rúnavík (UTM 29 618875 6888345), indoors, 1♂, 15 m, 21.XII.1999, Marius Sørensen leg., CJL-3956; **Sandoy**, Sandur (UTM 29 615534 6858732), indoors, 1♀, 20 m, 08.XII.2010, Kári Petersen leg., CJL-7421; **Streymoy**, Tórshavn (UTM 29 617000 6877500), indoors, 2♂3♀, 30 m, 08.I.2008, Dánial Jespersen leg., CJL-4381; Tórshavn (UTM 29 617000 6877500), indoors, 1♀, 30 m, 19.X.1999, Jens-Kjeld Jensen leg., CJL-3955; Tórshavn Hospital (UTM 29 616440 6876460), indoors, 1♀, 15 m, 15.VI.2001, Kim Hansen leg., CJL-3973; Tórshavn, trading center SMS (UTM 29 616502 6877775), indoors, 1 juveniles, 38 m, 02.II.2002, Dánial Jespersen leg., CJL-3917; **Vágar**, greenhouse at Sandavágur (UTM 29 596675 6881996), hothouse, 1♀, 30 m, 06.V.2010, Hávardur á Lofti leg., CJL-6532; Miðvágur (UTM 29 594400 6880850), indoors, 1♂, 10 m, 17.II.2004, Thomina í Lon leg., CJL-3943; Sørvágur (UTM 29 588500 6883350), outdoors, walls, carports etc, 1 juvenile, 20 m, 16.V.2008, Rodmund á Kelduni leg., CJL-4935.

\* ***Psilochorus simoni***. First record for the Faroes from Tórshavn, Streymoy in 2014. Found in the



basement of the Nordic House at which level the floor is decorated with gravel beds. A number of both sexes were observed indicating a breeding population.

First record: **Streymoy**, Tórshavn, Nordic House (UTM 29 616185 6878396), indoors, 1♂1♀1 juvenile, 70 m, 05.VIII.2014, Jørgen Lissner leg., CJL-10186.

**(Evarcha jucunda)**. This is undoubtedly an accidental import of a southern European spider species unable to breed in the Faroes.

Record: **Streymoy**, Tórshavn, trading center SMS (UTM 29 616502 6877775), indoors, 1 juvenile (matured as male in captivity), 38 m, 07.V.2016, Bergtóra Høgnessen leg., CJL-11527.

**(Hasarius adansonii)**. Found twice in a shopping centre at which site breeding is unlikely. The species may be able to breed in the Faroes if introduced to a greenhouse.

Records: **Streymoy**, Tórshavn, trading center SMS (UTM 29 616502 6877775), indoors, 1♂, 38 m, 14.X.2001, Dánial Jespersen leg., CJL-3951; same locality, 1♀, 10.X.2002, Dánial Jespersen leg., CJL-3906.

**(Icius subinermis)**. An accidental import of a southern European spider species unable to breed in the Faroes.

Record: **Vágar**, Sørvágur, Uppi á Hálsi industrial area (UTM 29 588726 6882644), indoors, 1♀, 68 m, 12.X.2010, Jim Sonni Guttesen leg., CJL-6952.

**(Marpissa muscosa)**. Found three times indoors in Tórshavn. Not yet found in natural habitat which in the Faroes could be stone fences and the outside of wooden houses. There is no evidence of breeding and the species is not considered a member of the fauna.

Records: **Streymoy**, Tórshavn (UTM 29 617000 6877500), indoors, 1 juveniles, 30 m, 05.IX.2004, Tóra Reinert leg., CJL-3975; Tórshavn (UTM ?), indoors, 1 juveniles, 30 m, 18.X.2007, Hans Eli Sivertsen leg., CJL-4360; Tórshavn, trading center SMS (UTM 29 616502 6877775), indoors, 1♀, 38 m, 25.VI.2002, Dánial Jespersen leg., CJL-3916.

**(Philaeus chrysops)**. Identification is based on a juvenile. An introduced southern European spider species unable to breed in the Faroes.

Record: **Streymoy**, Tórshavn (UTM 29 617000 6877500), indoors, 1 juvenile, 30 m, 18.IX.2008, Jógvan Niclassen leg., CJL-5366.

**(Salticus scenicus)**. Found only once in the Faroes and yet no evidence of breeding. Not added to the checklist. The species is common in Scotland, but absent from Orkney and Shetland (Harvey et al. 2002).

Record: **Eysturoy**, at the Norðskála-tunnel (UTM 29 604790 6900372), indoors, 1 juvenile, 180 m, 04.V.2008, Jón Lisberg leg., CJL-4917.

**Metellina merianae**. A very common and widespread species in the Faroes now known from fourteen islands. Here we report the first findings from Fugloy, Nólsoy, Skúvoy, and Stóra Dímun.

New records: **Fugloy**, at the Kirkja village (UTM 29 639070 6912550), urban area, outdoors, 1 juvenile, 50 m, 28.VIII.2007, Jens-Kjeld Jensen leg., CJL-4273; **Nólsoy**, outfield (UTM 29 624500 6871500), pasture, 1♀, 75 m, 18.II.2004, Julina Hansen leg., CJL-3942; **Skúvoy**, Ólansgarður (UTM 29 616054 6850088), rich, continually cultivated grasslands, 1♀2 juveniles, 50 m, 21.VIII.2008, Jens-Kjeld Jensen leg., CJL-5154; Skúvoy, village (UTM 29 615775 6850640), indoors, 1 juvenile, 40 m, 21.VIII.2008, Jens-Kjeld Jensen leg., CJL-5150; **Stóra Dímun**, buildings (UTM 29 618738 6841149), indoors, 2♂1♀3 juveniles, 95 m, 07.VIII.2010, Jens-Kjeld Jensen leg., CJL-6829; Stóra Dímun, infield (UTM 29 618688 6841005), rich, continually cultivated grasslands, 1♀, 80 m, 07.VIII.2010, Jens-Kjeld Jensen leg., CJL-6827.

\* **Tetragnatha extensa** (Figure 9). First record for the Faroes from Lake Toftavatn, Eysturoy in 2006. On Eysturoy, the species seems confined to the Lake Toftavatn/Rituvík area but it has later been found on Vágar, here the species is more widespread.

Records: **Eysturoy**, Lake Toftavatn at Toftir (UTM 29 619570 6886835), dwarf-shrub heath, 4 juveniles, 35 m, 22.VIII.2006, Rodmund á Kelduni leg., CJL-3957; same locality ♀1 juvenile, 35 m, 18.IV.2008, Rodmund á Kelduni leg., CJL-4758; same locality, 3 juveniles, 35



**FIGURE 9.** *Tetragnatha extensa* (Linnaeus, 1758), male from Heimaraleitið near Miðvágur, Vágur. Photo: J. Lissner.

m, 14.VI.2010, Jørgen Lissner leg., CJL-6724; same locality 1♀, 35 m, 18.VII.2012, Jørgen Lissner leg., CJL-8305; same locality, 4 juveniles, 35 m, 28.VIII.2006, Jens-Kjeld Jensen leg., CJL-3940; Lake Toftavatn, St. 1 (UTM 29 618783 6887577), dwarf-shrub heath, 1♂, 15 m, 17.VII.2009, William Simonsen leg., Coll. FMNH; Lake Toftavatn, St. 3 (UTM 29 618653 6887486), dwarf-shrub heath, 1 juvenile, 16 m, 04.IX.2009, William Simonsen leg., Coll. FMNH; Rituvík (UTM 29 620560 6888320), dwarf-shrub heath, 1 juvenile, 55 m, 26.V.2008, Rodmund á Kelduni leg., CJL-4930. **Vágur**, Sørvágur, Suðurtriðingshagi between the airport and Bøsdalafossur (UTM 29 591502 6880984), pastures, 1 juvenile, 100 m, 11.VIII.2014, Jørgen Lissner leg., CJL-10270; Vørufelli, Sørvágur (UTM 29 588850 6883400), dwarf-shrub heath, 3♀, 80 m, 20.VIII.2007, Rodmund á Kelduni leg., CJL-4265; Sørvágur, Ytri Suðurtriðingur (UTM 29 589900 6881050), pastures, 1 juvenile, 70 m, 03.IX.2007, Rodmund á Kelduni leg., CJL-4339; Miðvágur, Ravnagil (UTM 29 592770 6881120), pastures, 1♂, 40 m, 13.V.2008, Rodmund á Kelduni leg., CJL-4896; Vatnsóyyrar, á Fossi at the SE lakeshore of Fjallavatn (UTM 29 589234 6887611), pastures, 1♀, 105 m, 11.VIII.2014, Jørgen Lissner leg., CJL-10146.

† *Crustulina guttata*. Previously reported once from Æðuvík, Eysturoy (Bengtson *et al.* 2004). The single record is considered accidental as the habitat requirement of the species is not met in the

Faroes. The species is deleted from the Faroese checklist.

(*Enoplognatha ovata*). Recorded four times in the Faroes. Only found indoors in Tórshavn. The two females from Tvøroyri were taken outdoors, but it is questionable whether the species is able to breed in the Faroes. Adding to the checklist will have to await further records.

Records: **Streymoy**, Tórshavn (UTM 29 617000 6877500), indoors, 1♀, 30 m, 16.IX.2012, Jógvan Niclassen leg., CJL-8443; Tórshavn, Forestry Service of the Faroe Islands, Hvítanesvegur 3 (UTM 29 616674 6878898), indoors, 1♀, 40 m, 11.X.2007, Rodmund á Kelduni leg., CJL-4349; **Suðuroy**, Tvøroyri (UTM 29 616265 6826515), harbour wasteland, 1♀, 5 m, 11.XI.2010, Jens-Kjeld Jensen leg., CJL-7422; Tvøroyri Village (UTM 29 616351 6826608), urban area, outdoors, 1♀, 10 m, 24.VIII.2012, Ian Findleton leg., CJL-8425.

\* *Parasteatoda tepidariorum*. First record for the Faroes from Tórshavn, Streymoy in 2000. Later a breeding population has been found in a greenhouse at Sandavágur, Vágur. A single specimen has been found in outfield grassland, most likely a stray specimen.

Records: **Streymoy**, Tórshavn, trading centre SMS (UTM 29 616502 6877775), indoors, 1♂, 38

m, 16.X.2000, Dánial Jespersen leg., CJL-3925; same locality, 1 juvenile, 05.I.2002, Dánial Jespersen leg., CJL-3914; **Vágar**, Sandavágur (UTM 29 596675 6881996), hothouse, 1♂7♀2 juveniles, 30 m, 10.IX.2007, Rodmund á Kelduni leg., CJL-4302; same locality, 4♀, 23.XI.2007, Rodmund á Kelduni leg., CJL-4368; Miðvágur, Norði í Líð (UTM 29 592200 6881500), pasture, 1 juvenile, 45 m, 10.IX.2007, Rodmund á Kelduni leg., CJL-4320.

**Robertus arundineti**. Previously recorded only once (1♀, 2 September 1912) at Bøsdalafossur, Vágar (Schenkel 1925). Later searches for the species at this locality have been unsuccessful. Apparently a very rare or extinct species.

**Robertus lividus**. A common and widespread species now known from eleven islands. Here we report the first findings from Víðoy and we confirm the presence on Kunoy and Nólsoy, previously only juvenile specimens were collected on these two islands (Bengtson *et al.* 2004).

New records: **Kunoy**, outfield (UTM 29 621776 6909449), pasture, 2♀, 100–450 m, 06.V.2006, Jens-Kjeld Jensen leg., CJL-3929; approximately the same locality, 2♂7♀1 juvenile, 100–450 m, 10.V.2008, Rodmund á Kelduni leg., CJL-4904; **Nólsoy**, outfield (UTM 29 624500 6871500), pastures, 1♂1♀, 75 m, 19.VIII.2007, Jens-Kjeld Jensen leg., CJL-4259; Víðoy, Uppi á Garði, Villingadalssfjall (UTM 29 626467 6918949), rocks, 1♀, 700 m, 31.VIII.2008, Jens-Kjeld Jensen leg., CJL-5160.

**Steatoda bipunctata**. One of the first recorded species in the Faroes in 1781–82 (Svabo 1959). Since then it was unrecorded for almost 220 years until it was rediscovered in 1999. The species is synanthropic in the Faroes and is known from buildings on five islands.

New records: **Eysturoy**, Toftir (in building) (UTM 29 618033 6886601), habitat not recorded, 1♂1♀, 5 m, 19.XI.2009, Hans Eli Sivertsen leg., CJL-5288; **Nólsoy**, village (UTM 29 624340 6871540), outdoors, walls, carports etc., 1 juvenile, 15 m, 22.VII.2005, Jens-Kjeld Jensen leg., CJL-3966; **Streymoy**, Kollafjørður village (UTM 29 609535 6889100), outdoors, walls, carports etc., 7♀4 juveniles, 20 m, 18.IV.2008, Rodmund á Kelduni leg., CJL-4757; Sund north of Tórshavn (UTM

29 612625 6881510), stable, 1♀, 42 m, 12.VI.2010, Jørgen Lissner leg., CJL-6738; Tórshavn, trading centre SMS (UTM 29 616502 6877775), indoors, 1♂, 38 m, 01.VIII.2002, Dánial Jespersen leg., CJL-3964; Tórshavn, Heiðavegur 12 (UTM 29 615661 6878378), indoors, 1♂, 78 m, 06.XI.2016, Dánial Jespersen leg., CJL-11653; **Suðuroy**, Trongisvágur, Rúsdrekkasøla Landsins (UTM 29 615721 6825797), indoors, 1♀, 20 m, 19.XI.1999, Gudmund Poulsen leg., CJL-3974; **Vágar**, Sandavágur (UTM 29 596740 6881435), outdoors, walls, carports etc., 1♀, 15 m, 04.III.2009, Rodmund á Kelduni leg., CJL-5828.

**(Steatoda paykulliana)**. Found once on Nólsoy at which site breeding is unlikely, therefore not added to the checklist. Possibly introduced with grapes from France.

New records: **Nólsoy**, village (UTM 29 624340 6871540), outdoors, walls, carports etc, 1 juvenile (matured as male in captivity), 15 m, 10.X.2007, Aksel Joensen leg., CJL-4351.

† **Ozyptila atomaria**. Previously reported once from Kunoy (Bengtson *et al.* 2004). Three males were taken in 1984 in outfield just north of the settlement. However, the specimens were examined again in this study and found to belong to *O. trux*. Since there are no further records of *O. atomaria* in the Faroes the species is deleted from the checklist.

**Ozyptila trux**. A rather uncommon species known from seven islands.

New records: **Kunoy**, outfield at the northern outskirts of the village (UTM 29 620516 6909442), pasture, 1♀12 juveniles, 60–140 m, 19.VII.2012, Jørgen Lissner leg., CJL-8352; **Vágar**, Sørvágur, Ytri Suðurtriðingur (UTM 29 589900 6881050), pasture, 1 juveniles, 82 m, 13.XI.2007, Rodmund á Kelduni leg., CJL-4374; Miðvágur, Ravnagil (UTM 29 592770 6881120), pastures, 1♀, 40 m, 27.IX.2007, Rodmund á Kelduni leg., CJL-4305.

**Xysticus cristatus**. A widespread and common species. Here we report the species for the first time on Fugloy, Kalsoy, Nólsoy, and Skúvoy.

New records: **Fugloy** (UTM 29 638600 6913600), pasture, 1 juvenile, 250 m, 28.VIII.2007, Jens-Kjeld

Jensen leg., CJL-4277; **Kalsoy**, Húsar village (UTM 29 619642 6905890), urban area, outdoors, 1♂, 20 m, 03.VI.2009, Jens-Kjeld Jensen leg., CJL-5550; **Nólsoy**, village (UTM 29 624340 6871540), outdoors, 1 juvenile, 15 m, 21.I.2015, Jørgen Lissner leg., CJL-10682; Nólsoy, outfield (UTM 29 624500 6871500), pasture, 1 juvenile, 75 m, 19.VIII.2007, Jens-Kjeld Jensen leg., CJL-4256; **Skúvoy**, outfield (UTM 29 614596 6850567), pasture, 1♂1♀, 190 m, 12.VI.2012, William Simonsen leg., Coll. FMNH.

***Uloborus plumipes***. An introduced species previously reported from Tórshavn (Aakra & Olsen 2003; Bengtson et al. 2004). Here we report the species also from Nólsoy and Vágur.

New records: **Nólsoy**, village, Kaffistovan (UTM 29 621758 6877377), indoors, 1♀, 5 m, 01.II.2001, Hervør Hansen leg., CJL-3926; **Streymoy**, Tórshavn, trading centre SMS (UTM 29 616502 6877775), indoors, 1♀, 38 m, 02.II.2002, Dánial Jespersen leg., CJL-3918; Tórshavn, trading centre SMS (UTM 29 616502 6877775), indoors, 1 juveniles, 38 m, 26.IX.2001, Dánial Jespersen leg., CJL-3921; **Vágur**, Sandavágur, greenhouse (UTM 29 596675 6881996), hothouse, 1♂1♀1 juvenile, 30 m, 05.V.2008, Rodmund á Kelduni leg., CJL-4877; Miðvágur (UTM 29 594400 6880850), indoors, 1♀, 10 m, 05.VII.2004, Ingi Joensen leg., CJL-3952.

**Acknowledgements.** We wish to thank chief engineer Per Djursvoll, The Natural History Collections, University of Bergen, Norway and curator Jonas Ekström, Zoological collections, Department of Biology, Lund University, Sweden for locating specific spiders of the study of Bengtson et al. (2004). Emilie Sofie Lissner is thanked for assistance with fieldwork in the Faroes.

## References

Aakra, K., Morika, G.H., Antonsen, A., Farlund, M., Wrånes, A.E., Frølandshagen, R., Løvbekke, H., Furuseth, P., Fjellberg, A., Lemke, M., Pfliegler, W.P., Olsen, K.M., Aadland, B. & Berggren, K. (2016) Spiders new to Norway (Arachnida, Araneae) with ecological, taxonomical and faunistic comments. *Norwegian Journal of Entomology* 63, 6–43.

Aakra, K. & Olsen, K.M. (2003) Two introduced

species of spiders (Araneae) new to Norway and the first record of *Uloborus plumipes* Lucas (Uloboridae) from the Faroes. *Norwegian Journal of Entomology* 50, 104.

Almqvist, S. (2005) Swedish Araneae, part 1: families Atypidae to Hahniidae (Linyphiidae excluded). *Insect Systematics & Evolution Supplement* 62, 1–284.

Ashmole, N.P. (1979) The spider fauna of Shetland and its zoogeographic context. *Proceedings of the Royal Society of Edinburgh* 78B, 63–122.

Bengtson, S.-A., Enckell, P.H., Bloch, D. & Erling, H. (2004) Spiders (Araneae) in the Faroe Islands: an annotated checklist and an update on inter-island distributions. *Fróðskaparrit* 52, 54–72.

Bengtson, S.-A. & Hauge, E. (1979) Terrestrial Invertebrates of the Faroe Islands: I. Spiders (Araneae): Check-list, distribution, and habitats. *Fauna Norvegica Series B* 26, 59–83.

Bengtson, S.-A. & Hauge, E. (2007) Spiders in Iceland: distributions, species richness, and faunal changes. *Insect Systematics & Evolution* 38, 97–120.

Brændegaard, J. (1928) Araneina. In: R. Spärck and S. L. Tuxen (Eds), *The Zoology of the Faroes*. Andr. Fred. Høst & Søn, Copenhagen, pp. 1–28.

Fosaa, A.M. (2009) *Farøse plants*. 1st ed. E. W. Poulsen (Ed). H.N. Jacobsens Bókhandil, Torshavn.

Harvey, P.R., Nellist, D.R. & Telfer, M.G. (2002) *Provisional atlas of British spiders (Arachnida, Araneae), volumes 1 & 2*. Biological records Centre, Huntingdon. Available from: [www.brc.ac.uk](http://www.brc.ac.uk).

Hauge, E., Berland, B. & Højgaard, D.P. (2002) *Pholcus phalangioides* (Fuesslin, 1775) (Araneae, Pholcidae) first record from the Faroe Islands. *Norwegian Journal of Entomology* 49, 48.

Holm, Å. (1980) Spiders (Araneae) from the Faroes. *Bulletin of the British Arachnological Society* 5, 108–114.

Kortal.fo (2016) Kortal.fo GIS portal by Umhvørvisstovan (Farøese Environment Agency). Available from: <http://www.kortal.fo/> (November 22, 2016).

Landt, J. (1800) *Forsøg til en Beskrivelse over Færøerne [A description of the Faroe Islands, containing an account of their situation, climate, and productions, together with the manners and customs of the inhabitants, their trade etc., 1810]*. Tikjøbs Forlag (reprinted by Einar Prent og Forlag, Tórshavn 1965), København.

Lessert, R. de (1913) Arachnides (Araneae et Opiliones). *Arkiv för Zoologi* 8, 25–32.

Magnussen, E. (2003) Nýggjur eiturkoppur funnin í



- Føroyum. *Fróði* 2, 15.
- Marusik, Y.M. (2015) 18.1. Araneae (Spiders) J. Böcher, N. P. Kristensen, T. Pape, and L. Vilhelmsen (Eds). *Fauna Entomologica Scandinavica. The Greenland Entomofauna. An Identification Manual of Insects, Spiders and Their Allies* 44, 667–703.
- Nentwig, W., Blick, T., Gloor, D., Hänggi, A. & Kropf, C. (2016) Spiders of Europe. Version 10.2016. Available from: [www.araneae.unibe.ch](http://www.araneae.unibe.ch) (October 26, 2016).
- Schenkel, E. (1925) Fauna Færøensis. Araneina. *Entomologiske Meddelelser* 14, 395–406.
- Simon, E. (1898) Liste des Arachnides recueillies en 1892 par M. Gaston Buchet dans la presqu'île N.-O. de l'Islande. *Bulletin de la Société Entomologique de France* 13, 261–263.
- Sørensen, W. (1904) Danmarks, Færøernes og Islands edderkopper med undtagelse af Theridierne. Araneae Danicae, Faroicae et Islandicae, Theridioidis exceptis. *Entomologiske Meddelelser* 2, 240–426.
- Svabo, J.C. (1959) *Indberetninger fra en Reise i Færøe 1781 og 1782*. Selskabet til Udgivelse af Færøske Kildeskrifter og Studier. C.A. Reitzel Boghandel, København.

Received: 6 November 2016

Accepted: 1 December 2016

**Appendix.** Maps showing the distribution of 90 species of spiders of the Faroes. Black circles refer to new, previously unpublished records of studies [14] and [15]. Black squares denotes older records in the literature of studies [1]–[13]. Not all older record could be mapped, in some studies place names were only given for the uncommon species. Thus, some of the common species are underrepresented with place marks in the maps.

---



1. *Eratigena atrica* (C. L. Koch, 1843); 2. *Tegenaria domestica* (Clerck, 1757); 3. *Amaurobius fenestralis* (Ström, 1768); 4. *Amaurobius similis* (Blackwall, 1861); 5. *Zygiella x-notata* (Clerck, 1757); 6. *Clubiona trivialis* C. L. Koch, 1843.

Appendix. continued



7. *Haplodrassus signifer* (C.L. Koch, 1839); 8. *Iberina montana* (Blackwall, 1841); 9. *Agyneta decora* (O. P.-Cambridge, 1871); 10. *Agyneta gulosa* (L. Koch, 1869); 11. *Agyneta nigripes* (Simon, 1884); 12. *Agyneta subtilis* (O. P.-Cambridge, 1863); 13. *Allomengea scopigera* (Grube, 1859); 14. *Baryphyma trifrons* (O. P.-Cambridge, 1863); 15. *Bathyphantes gracilis* (Blackwall, 1841).

Appendix. continued



16. *Bolyphantes luteolus* (Blackwall, 1833); 17. *Centromerita bicolor* (Blackwall, 1833); 18. *Centromerita concinna* (Thorell, 1875); 19. *Centromerus arcanus* (O. P.-Cambridge, 1873); 20. *Centromerus dilutus* (O. P.-Cambridge, 1875); 21. *Centromerus prudens* (O. P.-Cambridge, 1873); 22. *Ceratinella brevipes* (Westring, 1851); 23. *Collinsia holmgreni* (Thorell, 1871); 24. *Diplocentria bidentata* (Emerton, 1882).



## Appendix. continued



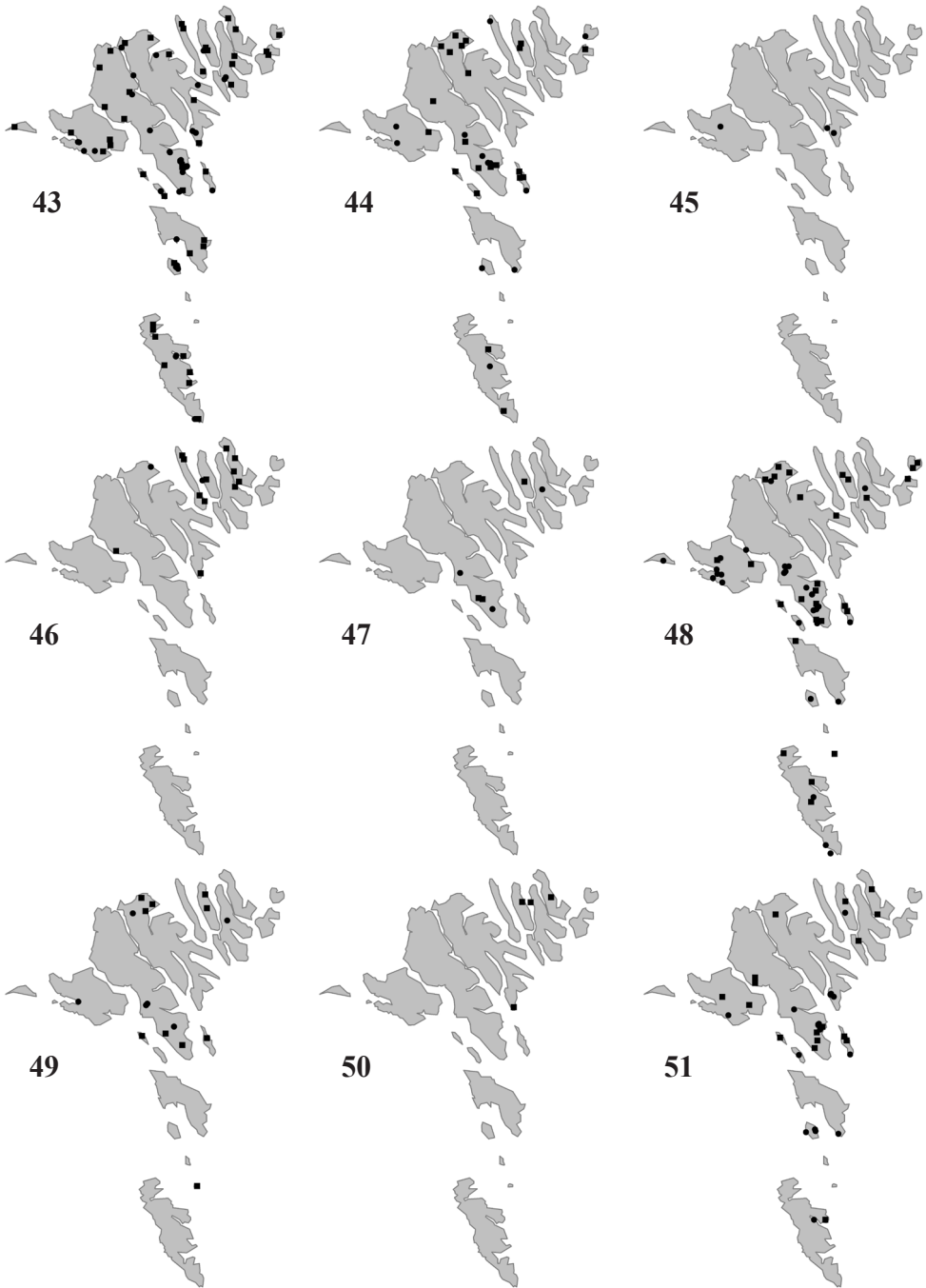
25. *Diplocephalus cristatus* (Blackwall, 1833); 26. *Diplocephalus permixtus* (O. P.-Cambridge, 1871); 27. *Drepanotylus uncatus* (O. P.-Cambridge, 1873); 28. *Entelecara errata* O. P.-Cambridge, 1913; 29. *Erigone arctica* (White, 1852); 30. *Erigone atra* Blackwall, 1833; 31. *Erigone dentigera* O. P.-Cambridge, 1874; 32. *Erigone promiscua* (O. P.-Cambridge, 1873); 33. *Erigone psychrophila* Thorell, 1871.

Appendix. continued



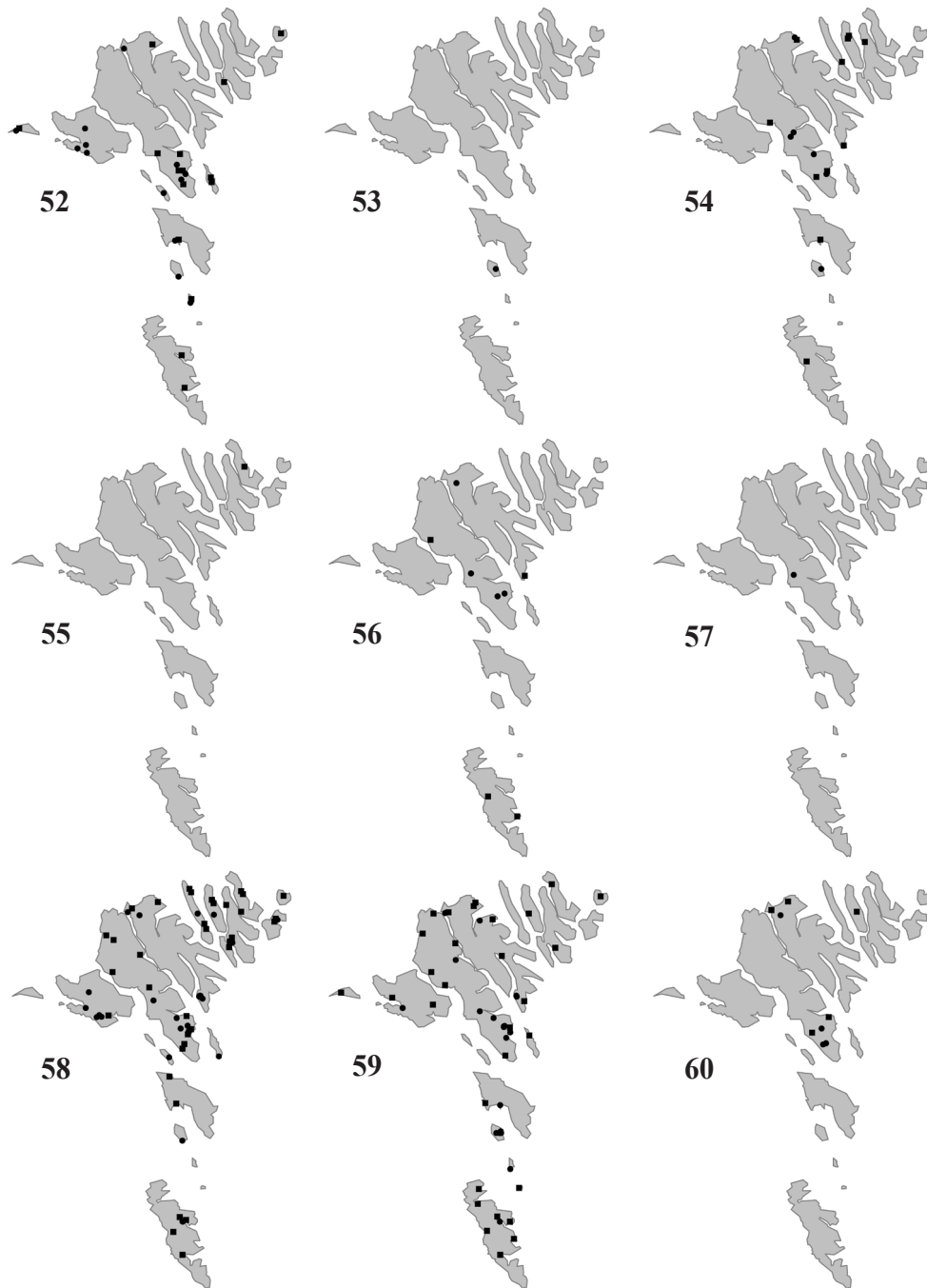
34. *Erigone tirolensis* L. Koch, 1872; 35. *Erigone whymperi* O. P.-Cambridge, 1877; 36. *Gonatium rubens* (Blackwall, 1833); 37. *Gongylidiellum vivum* (O. P.-Cambridge, 1875); 38. *Halorates reprobus* (O. P.-Cambridge, 1879); 39. *Hilaira nubigena* Hull, 1911; 40. *Hypomma bituberculatum* (Wider, 1834); 41. *Improphantes complicatus* (Emerton, 1882); 42. *Lepthyphantes leprosus* (Ohlert, 1865).

Appendix. continued



43. *Leptorhoptrum robustum* (Westring, 1851); 44. *Mecynargus morulus* (O. P.-Cambridge, 1873); 45. *Microlinyphia pusilla* (Sundevall, 1830); 46. *Monocephalus fuscipes* (Blackwall, 1836); 47. *Mughiphantes whymperei* (F. O. P.-Cambr., 1894); 48. *Oreoneta frigida* (Thorell, 1872); 49. *Oreonetides vaginatus* (Thorell, 1872); 50. *Ostearius melanopygius* (O. P.-Cambridge, 1879); 51. *Palliduphantes ericaeus* (Blackwall, 1853).

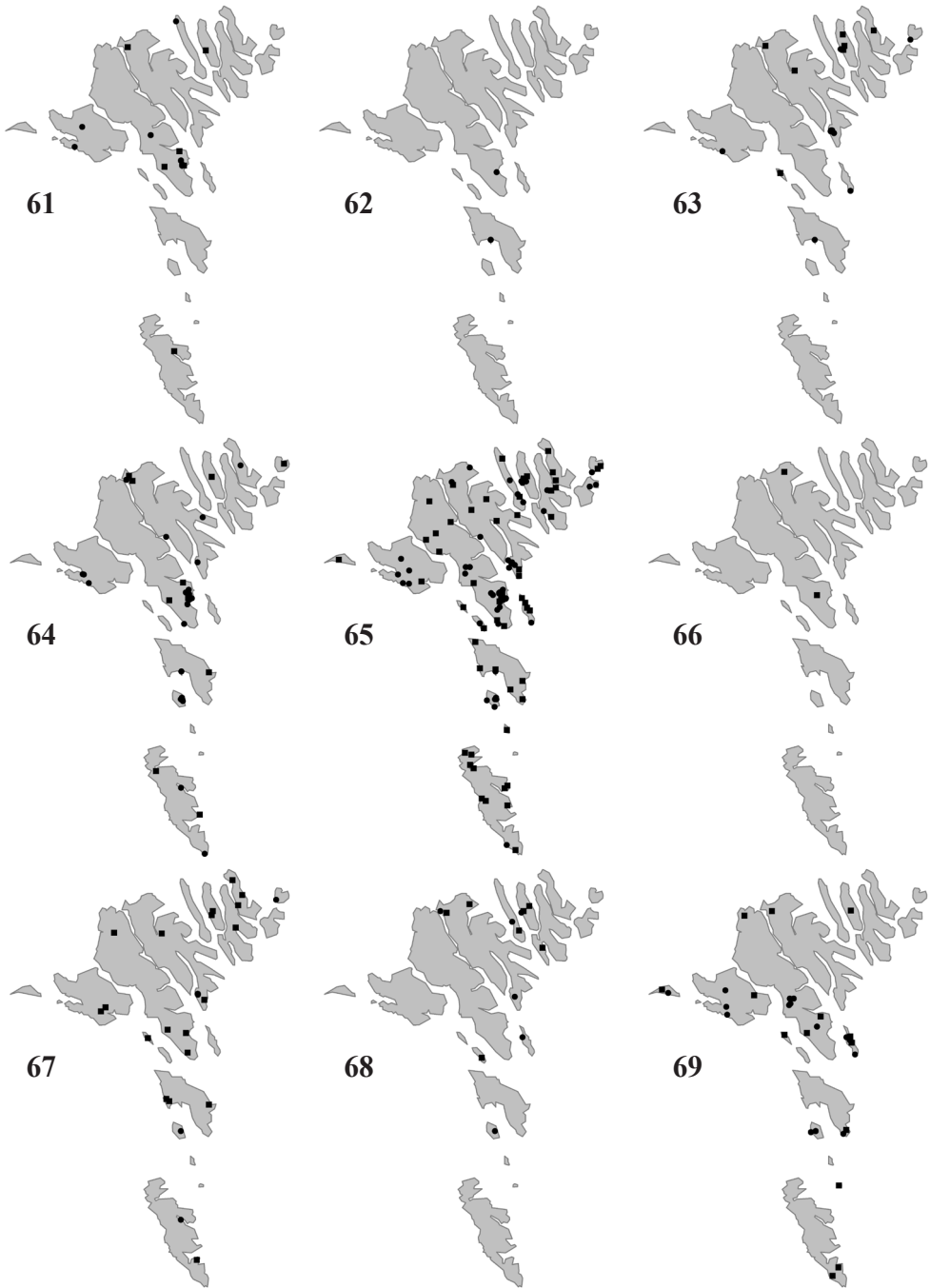
Appendix. continued



52. *Poecilonea variegata* (Blackwall, 1841); 53. *Porrhomma campbelli* F. O. P.-Cambridge, 1894; 54. *Porrhomma convexum* (Westring, 1851); 55. *Porrhomma egeria* Simon, 1884; 56. *Porrhomma montanum* Jackson, 1913; 57. *Porrhomma pallidum* Jackson, 1913; 58. *Saaristoa abnormis* (Blackwall, 1841); 59. *Savignia frontata* Blackwall, 1833; 60. *Scotinotylus evansi* (O. P.-Cambridge, 1894).

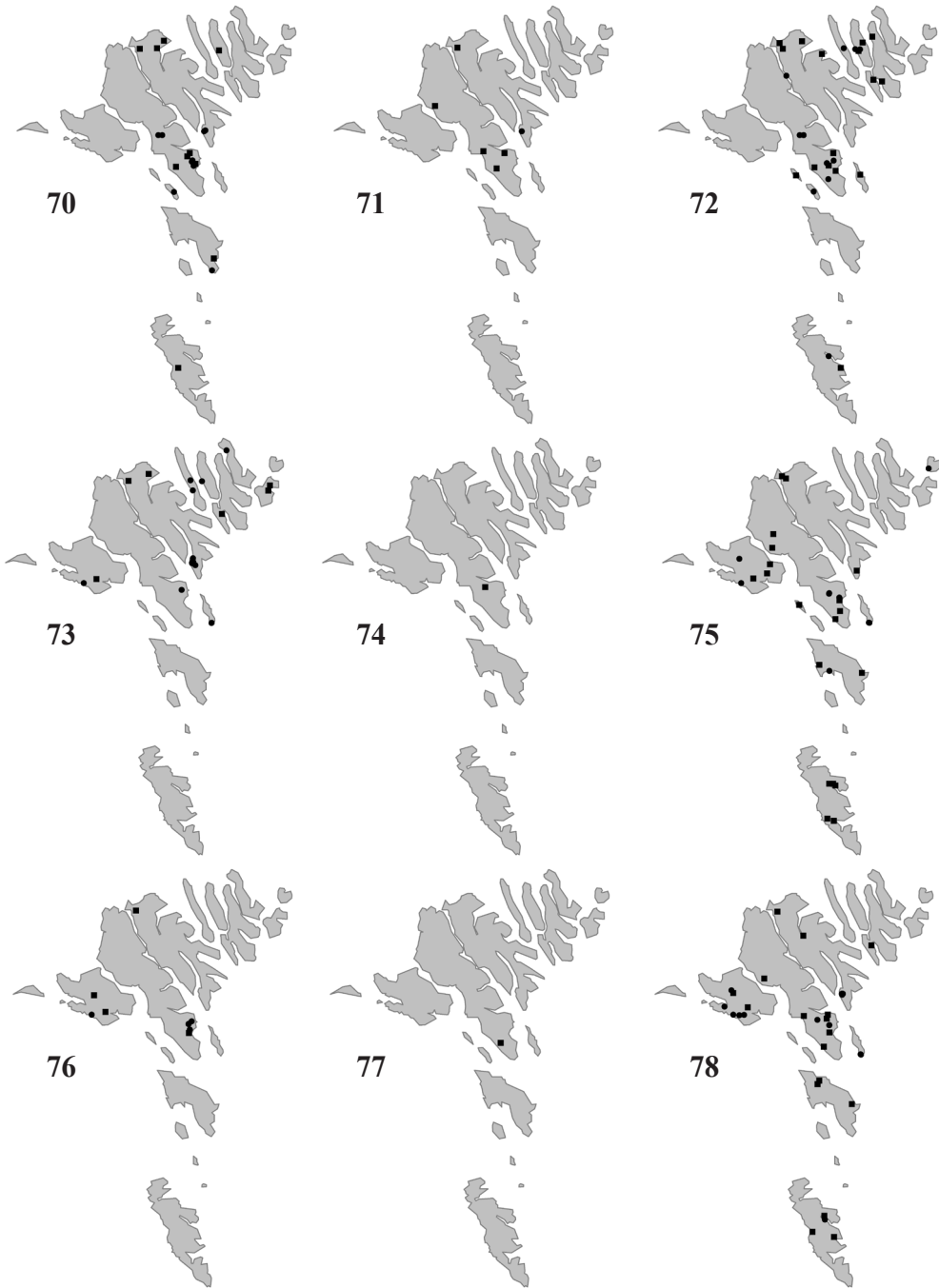


Appendix. continued



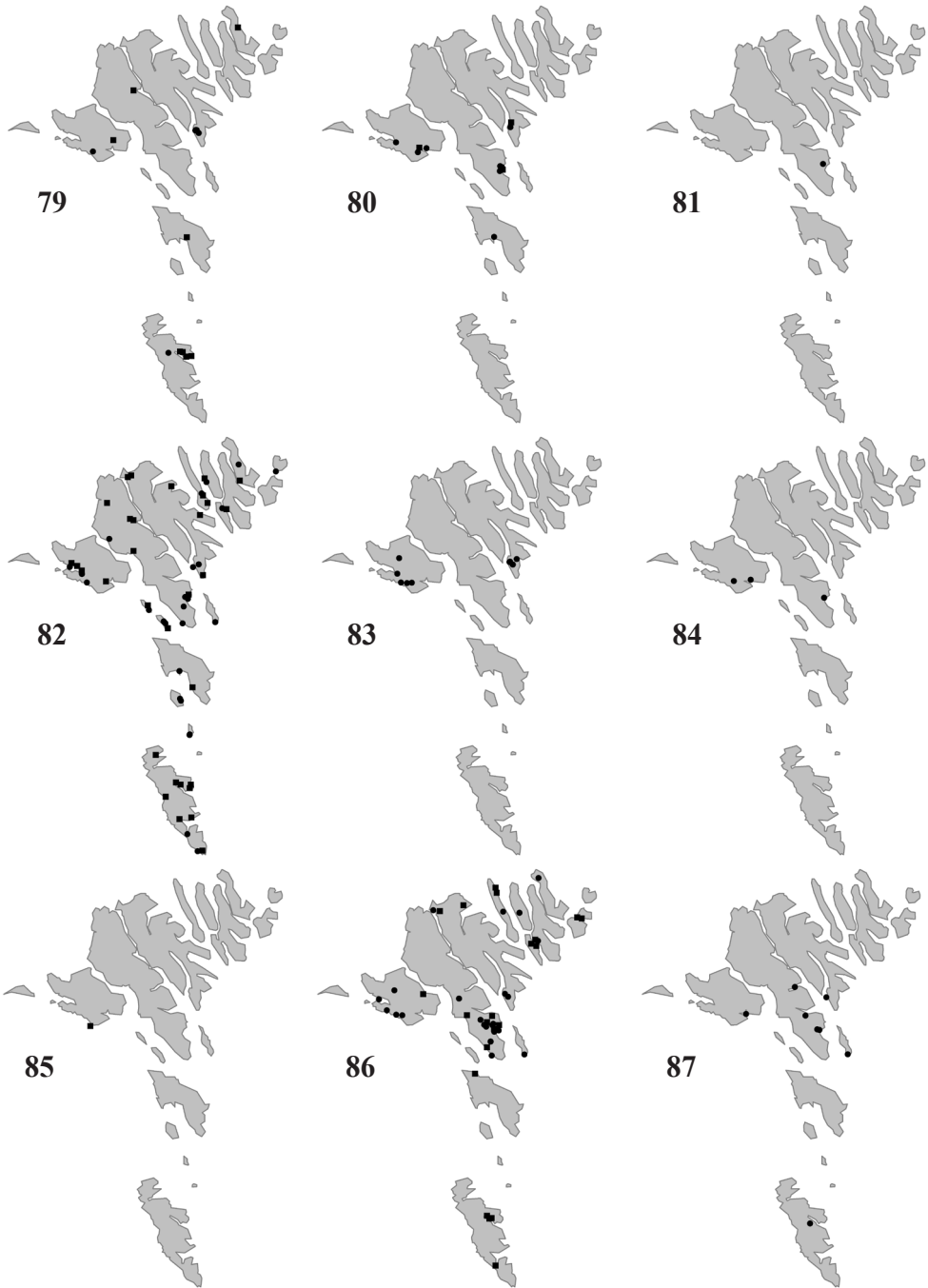
61. *Semljicola faustus* (O. P.-Cambridge, 1900); 62. *Silometopus ambiguus* (O. P.-Cambridge, 1905); 63. *Tenuiphantes mengei* (Kulczynski, 1887); 64. *Tenuiphantes tenuis* (Blackwall, 1852); 65. *Tenuiphantes zimmermanni* (Bertkau, 1890); 66. *Tiso aestivus* (L. Koch, 1872); 67. *Tiso vagans* (Blackwall, 1834); 68. *Walckenaeria antica* (Wider, 1834); 69. *Walckenaeria clavicornis* (Emerton, 1882).

Appendix. continued



70. *Walckenaeria cuspidata* Blackwall, 1833; 71. *Walckenaeria nodosa* O. P.-Cambridge, 1873; 72. *Walckenaeria nudipalpis* (Westring, 1851); 73. *Alopecosa pulverulenta* (Clerck, 1757); 74. *Arctosa alpigena* (Doleschall, 1852); 75. *Pardosa palustris* (Linnaeus, 1758); 76. *Pardosa sphagnicola* (Dahl, 1908); 77. *Pardosa trailli* (O. P.-Cambridge, 1873); 78. *Pirata piraticus* (Clerck, 1757).

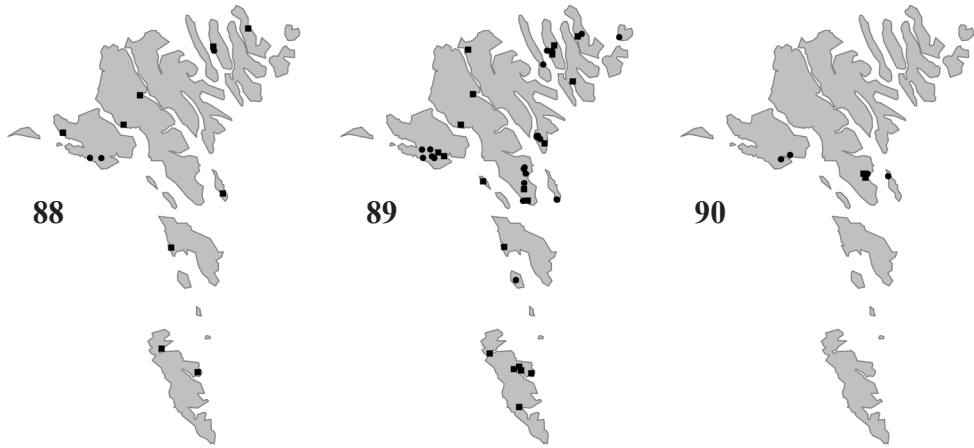
Appendix. continued



79. *Trochosa terricola* Thorell, 1856; 80. *Pholcus phalangioides* Fuesslin, 1775; 81. *Psilochorus simoni* (Berland, 1911); 82. *Metellina merianae* (Scopoli, 1763); 83. *Tetragnatha extensa* (Linnaeus, 1758); 84. *Parasteatoda tepidariorum* (C. L. Koch, 1841); 85. *Robertus arundineti* (O. P.-Cambridge, 1871); 86. *Robertus lividus* (Blackwall, 1836); 87. *Steatoda bipunctata* (Linnaeus, 1758).

Appendix. continued

---



88. *Ozyptila trux* (Blackwall, 1846); 89. *Xysticus cristatus* (Clerck, 1757); 90. *Uloborus plumipes* Lucas, 1846.

---