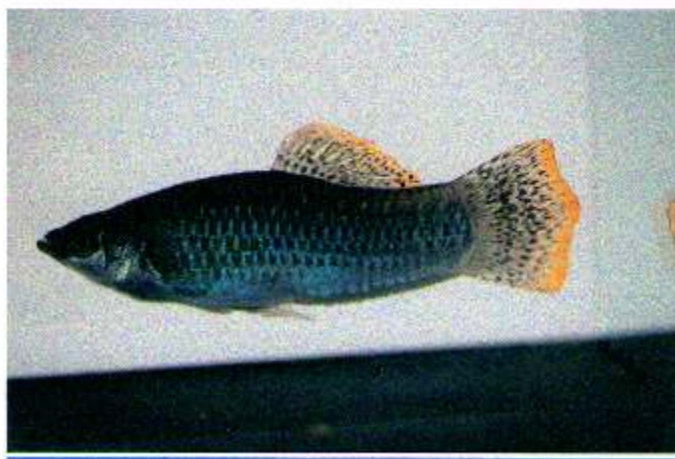




**2017**

**NATIONAL SHOWFISH SIZES**  
**AND TECHNICAL INFORMATION**



# FOREWORD

'From the Chairman'

Welcome to the new 2017 Federation Size Sheets

Once again Colin has put in a large amount of work into producing this year's size sheets.

This year we see a major change to Class 'Ea', Betta splendens. They will no longer be shown as the Ea sub-division but will be exhibited in their own class. We have designated Betta splendens with the class letter 'I'.

Betta splendens cannot be exhibited in E, so all our FBAS shows should include the Class letter 'I' in their schedule.

Your J & S members remain the same for this year, their contact details are on the FBAS website.

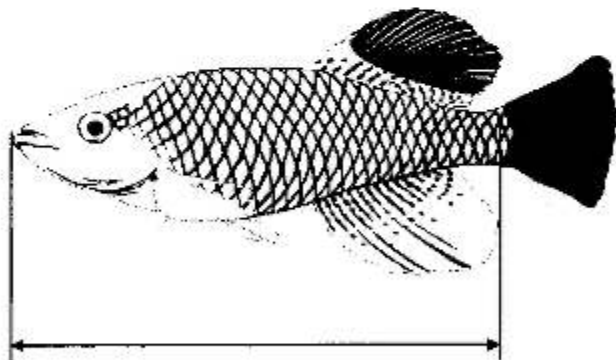
Referring back to B. splendens we have replaced the 10 points size category with 10 points Pattern category. Betta splendens will no longer be sized! Guidance on the pattern category will be issued to judges.

On behalf of the J & S, all the best for the coming Open Show season.

Paul Corbett. (Hon. Chairman, J. & S. Committee.)

## INDEX EXPLANATION

1. With the exception of the Goldfish classes, 'U' and 'V' and the Koi sub-division, each class has a Size Sheet listing the Genera that is to be exhibited in that class. When the opportunity to exhibit fishes in divided or split Classes does not present itself, then the fishes should be exhibited under their Basic Class Letter.
2. Where a Genus is allocated to more than one Class (i.e. Barbus) reference should be made to the Size Sheets to ascertain the correct Class for each particular species. Genera may also be divided amongst several classes, if in doubt, consult the Index by Class.
3. All sizes are for the standard length of a fish and are shown in millimeters. Where two sizes are given the first refers to the Male and the second to the Female.
4. The standard length is measured from the tip of the snout to the caudal peduncle and not, as is sometimes presumed, to where the caudal fin emerges from the body. The standard length does not include any snout extensions ( i.e. *Mormyrus engystoma* )



## Size Sheet Amendments by Class 2017

Class B	No amendments
Class Ba	No amendments
Class C	Amend size <i>Anostomus ternetzi</i> Add to list <i>Cyphocharax multilineatus</i> Add to list <i>Distichodus teugelsi</i> Amend size <i>Iguanodectes geisleri</i>
Class Ca	Add to list <i>Hemigrammus elegans</i> Amend size <i>Hyphessobrycon nigricinctus</i>
Class Cb	Amend size <i>Nannostomus marginatus</i>
Class D	Add to list <i>Amatitlani Sp Blues Convict</i> Add to list <i>Paretroplus manaranbo</i>
Class Da	No amendments
Class Db	Check all sizes on list as some in the secondline some were incorrect
Class E	No Amendments
Class F	Add to list <i>Anablepsoides holmiae</i>
Class G	Add to list <i>Auchenipterichthys longimanus</i> Add to list <i>Anadoras weddellii</i> Add to list <i>Hemiodontichthys acipenserinus</i> Add to list <i>Microsynodontis polli</i> Add to list <i>Nannoptopoma Sp Peru</i> Add to list <i>Pseudohemiodon apithanos</i> Add to list <i>Synodontis brichardi</i> Add to list <i>Synodontis robbianus</i>
Class Ga	No amendments
Class H	No amendments
Class Ha	No amendments
Class J	Add to list <i>Boraras marah</i>
Class K	No amendments
Class L	Add to list <i>Homaloptera orthyogoniata</i> Add to list <i>Homaloptera tweediei</i>
Class La	No amendments
Class M	Add to list <i>Mugilogobius adcia</i>
Class Ma	No amendments
Class Mb	Amend size <i>Oryzias woworae</i>
Class Mc	Add to list <i>Pseudomugil ivantsoffi</i>
Class O	No amendments
Class P	Amend size <i>Pocilia maxicana (black molly)</i>
Class Q	Add to list <i>Xiphophorus continens</i>
Class R	No amendments
Class S	No amendments
Class T	No amendments
Class Ta	Amend size <i>Skiffia multipunctata (male)</i>
Class Tb	No amendments
Class Tc	No amendments
Class W	No amendments





**CLASS "B" SIZE SHEET**

Where two sizes are given the first refers to the Male and the second the Female

Barbus	ablabe	75	Dawkinsia	arufus	100
B.	aboinensis	70	D.	exclamatio	90
B.	annectens	80	Desmopuntius	foerschii	50
B.	anoplus	65	D.	hexazona	45
B.	apleurogramma	45	D.	johorensis	90
B.	argenteus	85	D.	pentazona	55
B.	atakorensis	45	D.	rhombocellatus	45
B.	barnardi	50	Discherodontus	halei	90
B.	baudoni	35	Haludaria	fasciata	55
B.	callipterus	80	Hypselobarbus	gracilis	20
B.	candens	35	Oreichthys	cosuatis	70
B.	caninus	35	O.	crenuchoides	35
B.	eburmeensis	90	Pethia	bandula	45
B.	eutaenia	70	P.	conchonius	65
B.	fasciolatus	60	P.	cumingii	45
B.	gurneyi	85	P.	erythromycter (lipsick)	40
B.	haasianus	25	P.	gallus	35
B.	holotaenia	90	P.	manipurensis	45
B.	hulstaerti	30	P.	narayani	45
B.	jae	35	P.	nigrofasciata	55
B.	janssensii	90	P.	padamya (odessa)	50
B.	kerstenii	60	P.	phulunio	45
B.	leonensis	45	P.	stoliczkana	55
B.	lineomaculatus	75	P.	tiantian	40
B.	macinensis	45	P.	ticto	60
B.	macrops	60	Puntius	amphibius	90
B.	magdalenae	70	P.	aurotaeniatus	75
B.	martorelli	100	P.	bimaculatus	80
B.	miolepis	90	P.	lineatus	85
B.	motebensis	80	P.	masyai	45
B.	multilineatus	45	P.	oligolepis	40
B.	musumbi	50	P.	sachsi	65
B.	neumayeri	100	P.	sahyadriensis	60
B.	nyanzae	50	P.	semifasciatus	70
B.	oligogrammus	50	P.	sophore	80
B.	paludinosus	80	P.	sp. schuberti	65
B.	pallegrini	100	P.	terio	75
B.	perince	80	P.	titeya	35/40
B.	prionacanthus	100	P.	vittatus	45
B.	punctitaeniatus	30	Puntigrus	partipentazona	45
B.	quadripunctatus	30	P.	tetrazona	60
B.	radiatus	90	Systemus	pleurotaenia	70
B.	stigmatopygus	40			
B.	sublineatus	65			
B.	sylvaticus	50			
B.	toppini	45			
B.	trevelyani	80			
B.	tripilos	85			
B.	unitaeniatus	70			
B.	viviparus	65			
Clypeobarbus	congius	50			

### CLASS "Ba" SIZE SHEET

Where two sizes are given the first refers to the Male and the second the Female

Balantiocheilus	melanopterus	200
Barbodes	binotatus	140
Barbonymus	altus	105
B	schwanenfeldii	250
Barbus	afrohamiltoni	150
B	arcilongae	110
B	camptacanthus	110
B	ciscaucasicus	210
B	guirali	150
B	mattozi	145
B.	melanotaenia	210
B	serra	160
B	tauricus	260
B	trimaculatus	110
Cyclocheilichthys	apogon	210
C.	janthochir	180
Dewkinsia	assimilis	120
D.	filamentosa	120
Labeobarbus	codringtonii	380
L.	polylepis	125
Labiobarbus	festivus	210
L.	leptocheilus	210
Leptobarbus	hoevenii	350
Mystacoleucus	marginatus	170
Poropuntius	deauratus	180
Puntius	chola	120
P.	dorsalis	110
P.	everetti	110
P.	kuchingensis	140
P.	lateristriga	155
Sahyadria	denisonii	105
Systemus	asoka	105
S.	orphoides	200
S.	sarana	200
Tor	soro	210

**Where two sizes are given the first refers to the Male and the second the Female**

Abramites	hypselonotus	110	Copella	eigenmanni	50
Alestopetersius	caudalis	80	C.	metae	50
A.	hilgendorfi	90	C.	nattereri	45
A.	smykaliai	90	C.	nigrofasciata	50
Anostomus	anostomus	120	C.	vilmae	45
A.	temetzi	100	Corynopoma	riisei	50
Apareiodon	affinis	75	Creagrutus	beni	70
Aphyocharax	anisitsi	45	Crenuchus	spilurus	55
A.	dentatus	105	Cyphocharax	multilineatus	70
A.	erythrurus	75	C.	spilurus	90
A.	paraguayensis	35	Distichodus	affinis	140
A.	rathbuni	40	D.	decemmaculatus	65
Arnoldichthys	spilopterus	85	D.	lusosso	310
Astyanax	abramis	55	D.	noboli	100
A.	fasciatus	140	D.	rostratus	450
A.	mexicanus	85	D.	sexfasciatus	260
A.	sp "Lago Tefe"	45	D.	teugelsi	60
Axelrodia	stigmatias	45	Erythrinus	erythrinus	180
Bathyaethiops	breuseghemi	60	Exodon	paradoxus	100
B.	caudomaculatus	70	Gasteropelecus	levis	50
B.	greeni	50	G.	maculatus	65
Boankea	fredcochui	45	G.	sternica	50
Brachychalcinus	orbicularis	100	Gephyrocharax	atracaudatus	50
Brittanichthys	myersi	35	G.	caucanus	45
Brycinus	bimaculatus	100	G.	valencia	45
B.	imberi	145	Gnathocharax	steindacheri	50
B.	lateralis	130	Gymnocorymbus	bondi	65
B.	longipinnis	90	G.	temetzi	60
B.	macrolepidotus	130	G.	thayen	60
B.	nurse	180	Hemibrycon	guppyi	90
B.	taeniurus	130	H.	taeniurus	60
Brycon	melanopterus	130	H.	indens	105
B.	pesu	105	Hemiodus	goeldii	130
Bryconops	affinis	100	H.	gracilis	140
B.	caudomaculatus	110	H.	orthonops	140
B.	melanurus	60	Heterocharax	virgulatus	50
Camegiella	marthae	30	Hollandichthys	multifasciatus	90
C.	myersi	45	Iguanodectes	gesleri	70
C.	schereri	40	I.	spilurus	65
C.	stingata	45	Inpaichthys	karri	45
Characidium	brevirostre	45	Jupiaba	zonata	70/55
C.	fasciatum	80	Ladigesia	roloffi	25
C.	rachovii	60	Laemolyta	taeniata	170
C.	steindachneri	45	Lebiasina	bimaculata	130
Charax	condei	65	L.	intermedia	130
C.	gibbosus	130	L.	multimaculata	85
C.	pauciradiatus	120	Lepidarchus	adonis	30
C.	tectifer	90	Leporellus	vittatus	160
Chilodus	punctatus	70	Leporinus	fasciatus	235
Copeina	guttata	115	L.	friderici	300
Copella	arnoldi	80	L.	striatus	200

**CLASS "C" SIZE SHEET**

Where two sizes are given the first refers to the Male and the second the Female

Leptagoniates	steindachneri	90	Piabucina	panamensis	75
Markiana	nigripinnis	95	Piabucus	dentatus	150
Metynnis	argenteus	110	Poecilocharax	bovalli	40
M.	hypsauchen	120	P.	weitzmani	30
M.	lippincottianus	120	Prionobrama	fligera	55
M.	maculatus	160	Pseudogrammus	kennedyi	60
M.	mola	130	Pseudochalceus	kyburzi	80/70
Micralestes	acutidens	55	Pseudocorynopoma	coriae	70
M.	humilis	90	Pterobrycon	landoni	35
M.	stormsi	55	P.	myrmae	55
Moenkhausia	agnesae	90	Pygocentrus	nattereri	260
M.	oeros	45	Pyrrhulina	beni	60
M.	collettil	45	P.	brevis	70
M.	comma	65	P.	eleanorae	65
M.	copei	50	P.	filamentosa	55
M.	dichroura	45	P.	laeta	70
M.	hemigrammoides	30	P.	rachovlana	45
M.	intermedia	45	P.	spilota	65
M.	lepidura	60	P.	stoli	70
M.	melogramma	45	P.	vittata	60
M.	oligolepis	90	Rachoviscus	crassiceps	40
M.	phaenota	40	Rhabdalestes	septentrionalis	50
M.	pittleri	50	Rhoadsia	altipinna	130
M.	sanctaefflorenae	65	Roeboides	dayi	55
M.	simulata	50	R.	descahvaldensis	50
Mylopius	rubripinnis	120	R.	guatemalensis	90
Nannaethiops	unitaeniatus	50	Saccodon	dariensis	130
Nannocharax	parvus	50	Scopaeocharax	atopodus	20
Nematobrycon	lacortei	50	Steindachnerina	elegans	90
N.	palmeri	50	Stethaprion	erythops	70
Nematocharax	venustus	70/50	Tetragonopterus	argenteus	85
Neolebias	ansorgii	30	T.	chalceus	100
N.	axelrodi	25	Thayena	boehlkei	50
N.	kerguennae	25	T.	ifati	50
N.	powelli	25	T.	obliqua	65
N.	trewavasae	35	Thoracocharax	securis	85
N.	trilineatus	40	T.	stellatus	65
N.	unifasciatus	40	Triportheus	albus	90
Paragoniates	alburnus	55	T.	angulatus	180
Parodon	nasus	90	T.	elongatus	180
P.	suborbitalis	90	T.	pictus	140
Petersius	conserialis	125	T.	rotundatus	130
Phenagoniates	macrolepis	60	Tucandichthys	tucano	30
Phenocogrammus	altus	80	Tytocharax	maderae	20
P.	ansorgii	65			
P.	deheyri	75			
P.	interruptus	90			
Phenaogaster	tegatus	55			
Piabarchus	analis	30			
Piabucina	astrigata	140			
P.	boruca	90			

## CLASS "Ca" SIZE SHEET

Where two sizes are given the first refers to the Male and the second the Female

Carlana	eigenmanni	45	Hypheosobrycon	inconstans	35
Cheirodon	interruptus	45	H.	loretensis	35
C.	parahybae	30	H.	luetkenii	45
Compsura	gorgonae	30	H.	maculicauda	45
Hasemanina	nana	35	H.	megalopterus	35
Hemigrammus	barrigonae	45	H.	metae	40
H.	bellottii	40	H.	minimus	25
H.	bleheri	35	H.	minor	25
H.	boesemani	35	H.	nigricinctus	45
H.	coeruleus	65	H.	peruvianus	40
H.	elegans	35	H.	pulchripinnis	40
H.	erythrozonus	35	H.	pyrrhonotus	45
H.	guyanensis	35	H.	reticulatus	50
H.	hyanuary	35	H.	rosaceus	40
H.	luelingi	45	H.	roseus	30
H.	levis	45	H.	scholzei	40
H.	marginatus	50	H.	serpae	35
H.	micropterus	30	H.	socolofi	35
H.	ocellifer	40	H.	stegemanni	30
H.	pulcher	35	H.	sweglesi	55
H.	rhodostomus	45	H.	takasai	30
H.	rodwayi	45	H.	vilmiae	35
H.	schmarda	40	H.	weneri	35
H.	stictus	40	Mimagoniates	lateralis	30
H.	tridens	30	M.	microlepis	30
H.	ulreyi	40	Nanocheirodon	insignis	30
H.	unilineatus	45	Odontostilbe	dialeptura	45
H.	vorderwinkleri	35	O.	fugitiva	45
Hypheosobrycon	aguha	45	O.	pao	45
H.	amandae	25	O.	pulchra	45
H.	amapaensis	40	Paracheirodon	arnoldi	45
H.	anisitsi	65	P.	axelrodi	40
H.	anisitsi (albino)	65	P.	innesi	35
H.	axelrodi	25	P.	simulans	30
H.	bentosi	35	Petitella	georgiae	45
H.	bifasciatus	35	Pristella	maxillaris	40
H.	columbianus	65	P.	maxillaris (albino)	35
H.	compressus	25	Pseudocheirodon	terraba	65
H.	copelandi	40	Serrapinnus	kriegi	35
H.	elachys	40	S.	notomelas	35
H.	eques	45			
H.	erythro stigma	65			
H.	flammeus	35			
H.	frankel	35			
H.	georgettae	20			
H.	griemi	30			
H.	heliacus	35			
H.	haraldschultzi	30			
H.	herbertaxelrodi	40			
H.	heterorhabdus	40			
H.	igneus	40			

### CLASS "Cb" SIZE SHEET

Where two sizes are given the first refers to the Male and the second the Female

Nannostomus	beckfordi	45
N.	bifasciatus	45
N.	digrammus	35
N.	eques	45
N.	espei	35
N.	harrisoni	50
N.	marginatus	30
N.	marilynae	45
N.	minimus	25
N.	mortenthaleri	35
N.	rubrocaudatus	25
N.	trifasciatus	45
N.	unifasciatus	55

**CLASS "D" SIZE SHEET**

**Where two sizes are given the first refers to the Male and the second the Female**

Acarichthys	heckelli	130	Crenicichla	multispinosa	240
Acaronia	nassa	180	C.	proteus	145
Aequidens	pallidus	210/140	C.	punctata	210
A.	patricki	180	C.	regani	100
Amatitlani	Blue Convict	130/80	C.	reticulata	180
A.	nigrofasciata	130/80	C.	saxatilis	210
Amphilophus	alfari	160	C.	semifasciata	210
A.	altifrons	160	C.	strigata	300
A.	calobrense	160	C.	vittata	210
A.	citrinellus	210	Cryptoheros	nanoluteus	70
A.	labiatus	300/200	C.	spilurus	120/75
A.	macracanthus	180	C.	sajica	140/100
A.	rhytisma	130	C.	septemfasciatus	90/85
A.	robertsoni	140	Etroplus	maculatus	70
Andinoacara	coeruleopunctatus	115	E.	suratensis	300
A.	pulcher	130	Geophagus	argyrostictus	130
A.	rivulatus	190	G.	brasiliensis	230/210
Anomalochromis	thomasi	70/50	G.	crassilabris	130/80
Archocentrus	nanoluteus	70	G.	grammepareius	130
A.	nigrofasciatum	130/80	G.	pellegrini	150/80
A.	multispinosus	90	G.	proximus	260
Astatotilapia	bloyeti	100	G.	sp. Cabo frio	180
A.	desfontainii	105	G.	sp. Rio Areoes	160
Astronotus	ocellatus	240	G.	steindachneri	170
Australoheros	facetus	180	Guianacara	geayi	110/80
Biotodoma	cupido	100	Gymnogeophagus	australis	120
Bujurquina	mariae	110	G.	balzanii	140
B.	vittata	100	G.	gymnogenys	180
Caquetaia	kraussii	170	G.	labiatus	110
C.	myersi	190	G.	rhabdotus	105
C.	spectabilis	170	Hemichromis	bimaculatus	90
C.	umbrifera	260	H.	elongatus	140
Chaetobranchopsis	orbicularis	130	H.	letourneuxi	100
Chaetobranchus	flavescens	180	H.	lilalii	85
Cichla	ocellaris	500	H.	sp. Guinea 2	85
Cichlasoma	bocourti	260	H.	stellifer	90
C.	festae	260	Herichthys	carpintis	180
C.	portalegrense	160	H.	cyanoguttatus	260
C.	salvini	110	H.	labridens	210
C.	taenia	120/90	H.	steindachneri	160
C.	trimaculatum	260/180	H.	tasapoensis	140
C.	urophthalmum	180	Heros	notatus	180
Cleithracara	maronii	90/85	H.	severus	180
Crenicichla	acutirostris	260	H.	severus (gold)	170
C.	alta	200	Hoplarhus	psittacus	260
C.	compressiceps	60	Hypselecara	coryphaenoides	180
C.	cyanonotus	180	Hypsophrys	nicaraguensis	160/130
C.	geayi	180	H.	nematopus	90/60
C.	johanna	300	Konia	eisenbrauti	50
C.	lacustris	210	Krobia	guianensis	130
C.	lepidota	180	Laetacara	curviceps	65



**CLASS "D" SIZE SHEET**

Where two sizes are given the first refers to the Male and the second the Female

Laetacara	dorsigera	70	Sarotherodon	occidentalis	180
L.	flavilabris	100	S.	toumieri	210
L.	thayeri	100	Satanoperca	acuticeps	190
Mazarunia	mazarunii	70	S.	daemon	210
Mesonauta	festivus	130	S.	jurupari	200
M.	insignis	130	S.	leucosticta	140
Nandopsis	haitiensis	180	S.	lilith	180
N.	tetracanthus	180	S.	pappaterra	210
Oreochromis	aureus	300	Steatocranus	casuaricus	140
O.	jipe	330	S.	gibbiceps	90
O.	karomo	210	S.	irvinei	110
O.	mossambicus	300	S.	tinanti	110
O.	niloticus	260	S.	ubanguiensis	80
O.	pangani pangani	330	Stomatepia	mariae	100
O.	spilurus	230	S.	plindu	90
O.	urolepis	285	Symphysodon	aequifasciatus	130
O.	variabilis	200	S.	discus	130
Orthochromis	stormsi	100	Tahuantinsuyoa	macantzatza	130
Parachromis	dowii	260	Theraps	coeruleus	105
P.	friedrichsthalii	180	T.	godmanni	230
P.	loisellei	180	T.	heterospilus	160
P.	managuensis	210	T.	irregularis	230
Paraneetroplus	argenteus	260	Thoracochromis	demeusii	100
P.	bifasciatus	260	Thorichthys	affinis	140
P.	bulleri	180	T.	aureus	130
P.	fenestratus	250	T.	callolepis	100
P.	gibbiceps	210	T.	elliotti	150
P.	guttulatus	210	T.	helleri	110
P.	hartwegi	250	T.	meeki	120
P.	maculicauda	180	Tilapia	bemini	180
P.	manarambo	110	T.	buttikoferi	260
P.	melanurus	260	T.	guinasana	110
P.	nebulliferus	210	T.	guineensis	180
P.	regani	210	T.	joka	110
P.	synspilus	260	T.	kottae	180
P.	zonatus	190	T.	mariae	240
Paratilapia	polleni	170	T.	snyderae	90
Paretroplus	kieneri	150	T.	tholloni	210
Petenia	splendida	400	T.	walteri	210
Pseudocrenilabrus	multicolor	70	T.	zillii	210
P.	nicholsi	85	Tomocichla	sieboldii	160
P.	philander philander	70	T.	tuba	230
Ptychochromis	oligacanthus	180	Tylochromis	intermedius	110
Pungu	maclareni	60	T.	lateralis	180
Retroculus	lapidifer	180	T.	leonensis	210
Rocio	octofasciata	180/170	Uaru	amphiacanthoides	160
Sarotherodon	caudomarginatus	260			
S.	galilaeus	300			
S.	linnetii	180			
S.	lohbergeri	160			
S.	melanotheron	180			

## CLASS "Db" SIZE SHEET

Where two sizes are given the first refers to the Male and the second the Female

Apistogramma	agassizii	50/40	Chromidotilapia	linkei	90/80
A.	amboena	55/40	C.	schoutedeni	85/75
A.	bitaeniata	55/40	Congochromis	dimidiatus	70/55
A.	berlowi	60/45	C.	squamiceps	45/35
A.	borellii	50/35	Crenicara	punctulatum	90/85
A.	brevis	50/40	Dicrossus	filamentosus	55/45
A.	cacatuoides	60/45	D.	maculatus	60/50
A.	commbrae	45/25	Limbochromis	robertsi	90/70
A.	cruzi	50/40	Mikrogeophagus	altispinosus	60/55
A.	elizabethae	40/35	M.	ramirezi	55
A.	eunotus	65/45	M.	ramirezi ( gold )	50
A.	gibbiceps	50/40	Nannacara	anomala	60/50
A.	gossel	50/40	N.	aureocephalus	75/45
A.	hippolytae	50/45	N.	bimaculata	65/45
A.	hoignei	50/40	N.	taenia	45/45
A.	hongskoi	50/40	Nanochromis	consortus	65/50
A.	inconspicua	60/35	N.	minor	50/45
A.	juruenis	55/40	N.	nudiceps	65/50
A.	linkei	60/40	N.	parilus	85/60
A.	macmasteri	60/50	N.	splendens	80/50
A.	meinkeni	50/40	N.	transvestitus	40/40
A.	moae	50/40	Parananochromis	caudifasciatus	90/70
A.	nijsseni	50/35	P.	gabonicus	70/60
A.	ortmanni	50/45	P.	longirostris	110/80
A.	panduro	65/50	Pelmatochromis	buettikoferi	130
A.	paucisquamis	65/45	P.	nigrofasciatus	120
A.	pertensis	50/45	P.	ocellifer	120
A.	plaiuensis	50/40	Pelvicachromis	humilis	90/80
A.	pleurotaenia	50/40	P.	pulcher	90/60
A.	regani	55/45	P.	roloffi	75/50
A.	rupununi	60/50	P.	subocellatus	90/60
A.	staeckii	50/40	P.	taeniatatus	70/50
A.	steindachneri	60/45	Taeniacara	candlri	50/35
A.	taeniata	55/35	Teleocichla	cinderella	50
A.	trifasciata	45/30	T.	gephyrogramma	50
A.	viejita	50/35	T.	monogramma	50
Apistogrammoides	pucalpaensis	40/25	T.	prionogenys	50
B.	batesii	90/80	T.	proselytus	60
B.	finleyi	90/90	Teleogramma	brichardi	100/100
B.	riomuniensis	70/60	T.	depressa	85
Biotococcus	opercularis	90/80	T.	gracile	110
Chromidotilapia	cavallensis	90/60	T.	monogramma	110
C.	guentheri	130/100	Thysochromis	annectens	100/80
C.	kingsleyae	150/130	T.	ansorgii	100/80

## CLASS "Da" SIZE SHEETS

Pterophyllum	aitum	90
P.	scalare	90
P.	leopoldi	75

## CLASS Dc SIZE SHEET

**Where two sizes are given the first refers to the Male and the second the Female**

Aitolamprologus	calvus	120	Genyochromis	mento	120
A.	compressiceps	130	Gaphyochromis	lawsi	95
Aristochromis	christyi	220	G.	moorii	110
Astatoreochromis	alluaudi	130	Grammatotria	lemairii	180
A.	straeleni	100	Haplochromis	aeneocolor	75
Astatotilapia	burtoni	120	H.	chilotes	150
A.	calliptera	120	H.	degeni	125
Aulonocara	baenschii	140	H.	ishmaeli	125
A.	ethelwynnae	100	H.	lacrimosus	100
A.	hansbaenschii	120	H.	nlgricans	100
A.	jacobfrelbergi	120	H.	nyererei	150
A.	kandeensis	140	H.	obliquidens	150
A.	maylandi	140	H.	orthostoma	120
A.	steveni	130	H.	sauvagei	110
A.	stuartgranti	135	H.	sp "rock knobensis"	110
Aulonocranus	dewindti	120	H.	wingatii	100
Benthochromis	tricoti	160	Haplotaxodon	microlepis	220
Boulengerochromis	microlepis	700	Hemitaeniochromis	urotaenia	200
Buccochromis	heterotaenia	260	Hemittilapia	oxyrhyncha	190
B.	lepturus	400	iodotropheus	sprengrae	90
B.	rhoadesii	200	Julidochromis	dickfeldi	90
Callochromis	macropis	140	J.	sp.gombi	85
C.	melanostigma	140	J.	marlieri	125
C.	pleurospilus	110	J.	ornatus	85
Cardiopharynx	schoutedeni	140	J.	regani	140
Chalinochromis	brichardi	120	J.	transcriptus	70
C.	sp 'bifrenatus'	200	Labeotropheus	fuellaborni	150
Chellochromis	euchilus	200	L.	trewavasae	140
Chilotilapia	rhoadesii	140	Labidochromis	caeruleus(blue)	100
Copadichromis	azureus	130	L.	caeruleus(yellow)	100
C.	borleyi	160	L.	chisumulae	70
C.	cyaneus	180	L.	frelbergi	75
C.	mbenjii	120	L.	lanthinus	70
C.	pleurostigma	170	L.	lividus	70
C.	trimaculatus	210	L.	mbenjii	70
Ctenopharynx	pictus	110	L.	velicans	70
Cunningtonia	longiventralis	140	L.	zebroides	70
Cyathopharynx	furcifer	180/160	Lamprologus	callipterus	90
C.	intermedius	300	L.	congoensis	125
Cynotilapia	afra	100	L.	sp. daffodil	90
Cyphotilapia	frontosa	300	L.	kungweensis	40/30
Cyrtocara	moorii	200	L.	lemairii	200/150
Dimidiichromis	compressiceps	230	L.	meleagris	50/40
D.	kiwinge	270	L.	ocellatus	40/30
Eclectochromis	lobochilus	120	L.	ornatipinnis	75/30
E.	ornatus	170	Lepidiotemprologus	attenuatus	150
Ectodus	descampsil	100	L.	cunningtoni	240
Eretmodus	cyanostictus	70	L.	elongatus	180
Exochochromis	anagenys	250	L.	nkambae	130
Fossorochromis	rostratus	220	L.	profundicola	280

## CLASS Dc SIZE SHEET

Where two sizes are given the first refers to the Male and the second the Female

Lestreaea	perspicax	120	Nyassachromis	boadzulu	130
Lethrinops	sp. 'yellow collar'	100	N.	microcephalus	135
Limnochromis	auritus	125	Ophthalmotilapia	boops	160/150
Limnotilapia	dardenii	200/150	O.	heterodonta	150/140
Lobochilotes	labiatus	300	O.	nasuta	190/150
Maylandia	aurora	120	O.	ventralis	150/140
M.	barlowi	110	Creochromis	tanganicae	400
M.	elegans	130	Otopharynx	heterodon	110
M.	ostherae	120	O.	llthobates	125
M.	greshakei	120	O.	tetraspilus	110
M.	hajomaylandi	120	Paracyprichromis	brieni	110
M.	livingstonii	150	P.	nigripinnis	90
M.	lombardoi	110	Perissodus	microlepis	110
M.	xan stomachus	110	Petrochromis	famula	150
M.	zebra	120	P.	trewavasae	160
Melanochromis	auratus	110	Petrotilapia	genalutea	130
M.	chipokae	140	P.	tridentiger	200
M.	melanopterus	140	Plecodus	straeleni	120
M.	simulans	130	Protomelas	annectens	160
M.	vermivorus	120	P.	fenestratus	150
Mylochromis	gracilis	150	P.	taeniolatus	160
M.	melanonotus	240	Pseudosimochromis	curvifrons	110
Naevochromis	chrysogaster	170	Pseudotropheus	crabro	150
Neotampologus	bifasciatus	80	P.	demasoni	80
N.	boulengeri	70	P.	elongatus	125
N.	brevis	65/50	P.	joanjohnsonae	100
N.	brichardi	90	P.	johannii	100
N.	buescheri	90/80	P.	minutus	70
N.	caudopunctatus	60	P.	socolofi	140
N.	cylindricus	90	P.	sp 'acei'	120
N.	hecqui	75	P.	tropheops	120
N.	helianthus	60	Reganochromis	callurus	140
N.	leloupi	90	Sclaeonochromis	ahli	170/150
N.	longlor	90	S.	fryeri	130
N.	marunguensis	95	Serranochromis	robustus	500
N.	meeli	70	Simochromis	babauti	100/90
N.	modestus	100	S.	diagramma	140/120
N.	multifasciatus	45/55	S.	marginatus	100/90
N.	mustax	95/85	S.	pleurospilus	80
N.	nigriventris	80	Spathodus	erythron	75
N.	pectoralis	90	S.	marlieri	85
N.	savoryi	80	Tanganicodus	irasecae	75/55
N.	similis	45	Telmatochromis	bifrenatus	70
N.	tetracanthus	170	T.	dhoni	120/80
N.	tretocephalus	140	T.	temporalis	100/80
N.	ventralis	70	T.	vittatus	80
Nimbochromis	fuscotaeniatus	200	Trematocranus	microstoma	200
N.	livingstonii	250	T.	placodon	220
N.	polystigma	230	Tropheus	brichardi	130
N.	venustus	230	T.	duboisii	110

### CLASS Dc. SIZE SHEET

Where two sizes are given the first refers to the Male and the second the Female

T.	moorii	150
Tropheus	polli	120
Tyrannochromis	macrostoma	300
T.	nigriventer	280
Variabilichromis	moorii	80
Xenotilapia	boulengeri	120
X.	flavipinnis	70
X.	leptura	110
X.	melanogenys	150
X.	papilo	130
X.	spiloptera	70
X.	tenuidentata	60

**CLASS "E" SIZE SHEET**

Where two sizes are given the first refers to the Male and the second the Female

Anabas	cobojuis(digolepis)	170/160	Ctenops	nobilis	80/80
A.	testudineus	160/200	Dario	dario	25
Badis	badis	80	Helostoma	temminkii (green)	180/180
B.	ruber	55	H.	temminkii (pink)	180/180
B.	siamensis	55	Luciocephalus	pulcher	160
Belontiá	hasselti	140	Macropodus	ocellatus(chinensi)	60/55
B.	signata	120	M.	opercularis	70/70
Betta	akarensis	100	M.	spechti (concolor)	90/90
B.	albimarginata	35	Malpulutta	kretsleri	40/40
B.	anabatoides	90/90	Microctenopoma	ansorgii	70/80
B.	belunga	40/40	M.	congicum	75/55
B.	bellica	85/80	M.	damasi	60/50
B.	brownorum	30/25	M.	fasciolatum	75/60
B.	coccina	50/45	M.	intermedium	55/50
B.	dimidiata	40/40	M.	lineatum	90
B.	edithae	55/55	M.	nanum	65/55
B.	erilsae	90	Osphromenus	goramy	400
B.	fabx	35	Parasphaerichthys	ocellatus	35
B.	foerschi	55/40	Parosphromenus	aliani	30/30
B.	fusca	90/80	P.	anjunganensis	25/25
B.	imballis	45/40	P.	deissneri	30/30
B.	macrostoma	90/90	P.	filamentosus	30/25
B.	pellifina	80/80	P.	harveyi	25/25
B.	patoti	90/80	P.	linkei	25/25
B.	persephone	25/20	P.	nagyi	30/30
B.	picta	45/40	P.	ornaticauda	25/25
B.	pugnax	90/85	P.	paludicola	30/30
B.	rubra	40/40	P.	parvulus	25/25
B.	rutifans	25/25	Pseudosphromenus	cupanus	50/45
B.	simplex	45/45	P.	dayi	50/45
B.	smaragdina	50/45	Sandelia	bainsii	170/190
B.	sp mahachi	50	S.	capensis	180/200
B.	stigmosa	40	Sphaerichthys	acrostoma	45/45
B.	strohi	60/60	S.	osphromenoides	45/45
B.	taeniata	60/55	S.	vallanti	40/40
B.	tomi	50	Trichogaster	chuna	35/40
B.	tussayae	45/35	T.	fasciata	90/80
B.	unimaculata	90/70	T.	labiosa	70/65
Ctenopoma	acutirostre	130/130	T.	lalius	50/45
C.	argentoventer	130/130	T.	microlepis	120/120
C.	kingsleyae	180/180	Trichopodus	leeri	90/90
C.	maculatum	180/180	T.	pectoralis	180/160
C.	multiapine	110/110	Trichopodus	trichopterus(blue)	90/90
C.	muriei	50/45	T.	trichopterus(gold)	85/85
C.	nebulosum	90/90	T.	trichopterus	90/90
C.	nigropannosum	130/130		(sumatranus)	
C.	ocellatum	110/110	Trichopsis	pumila	30/35
C.	pellegrini	90/90	T.	schalleri	50/45
C.	pethenci	150/150	T.	vittata	55/50
Ctenopoma	weeks:	100/100			

**CLASS "F" SIZE SHEET**

**Where two sizes are given the first refers to the Male and the second the Female**

Anablepsoides	hartii	80/70	Cubanichthys	pengelleyi	45/50	
A.	holmiae	80/80	Cynodonichthys	magdalenae	50/50	
A.	rubrolineatus	40/36	C.	tenulis	55/50	
Aphanius	danfordii	45/40	C.	weberi	80/80	
A.	dispar dispar	45/45	Cynopoecilus	melanotaenia	25/20	
A.	fasciatus	45/30	Cyprinodon	macularius	45/45	
A.	mento	40/30	Epilplatys	annulatus	25/20	
A.	sophiae	30/20	E.	chaperi	45/40	
A.	viadykovi	35/35	E.	dageti	45/35	
Aphyolebias (Pterolebias)	schleseri	70/65	E.	fasciolatus	65/60	
A.	peruensis	70/60	E.	infracasciatus	50/45	
Aphyosemion	ahli	40/45	E.	olbrechtsi	50/45	
A.	australe	50/45	E.	roloffi	70/60	
A.	australe (gold)	50/45	E.	sexfasciatus	65/50	
A.	bilaeniatum	35/35	E.	spilargyreus	35/35	
A.	bivittatum	40/35	Fundulopanchax (Aphyosemion)	arnieti	60/80	
A.	cameronense	40/35	F.	(Aphyosemion)	arnoldi	35/35
A.	celiae	40/35	F.	(Aphyosemion)	gardneri	55/55
A.	christyi	45/35	F.	(Aphyosemion)	mirabilis	45/45
A.	elberti	35/30	F.	(Aphyosemion)	marmoratus	45/45
A.	exigideum	35/55	F.	(Aphyosemion)	puerzli	55/50
A.	gabunense	40/45	F.	(Aphyosemion)	scheeli	45/45
A.	louessense	30/25	F.	(Aphyosemion)	sjoestedti	105/90
A.	ogoense	40/35	F.	(Aphyosemion)	sjoestedti(dwarf red)	70/50
A.	primigenium	35/30	F.	(Aphyosemion)	sporensbergi	70/65
A.	rectogoense	35/30	F.	(Aphyosemion)	walkeri	45/45
A.	riggenbachi	45/45	Fundulus	chrysolus	60/80	
A.	striatum	40/35	F.	cingulatus	55/55	
A.	wachtersi	35/30	Hypsolebias	flavicaudatus	40/35	
Aphyosemion (Diapteron)	abacinum	25/20	Jordanella	floridae	50/50	
A. (Diapteron)	cyanostrictum	25/20	Laimosemion	agilae	35/25	
A. (Diapteron)	fulgens	25/20	L.	xiphidius	25/25	
A. (Diapteron)	georgiae	25/25	Lucania	goodei	50/45	
Aplocheilichthys	spilauchen	60/80	Maratecoara	lacortei	35/25	
Aplocheilus	blockii	45/40	Micropanchax	macrophthalmus	30/25	
A.	dayi	75/65	Moema	priana	140/130	
A.	lineatus	90/80	M.	qullii	100/100	
A.	panchax (all types)	60/50	Nematolebias	whitei	90/45	
Austrofundulus	limnaeus	75/65	Neofundulus	ornatipinnis	35/30	
A.	transilis	60/50	Nothobranchius	annectens	25/25	
Austrolebias (Cynolebias)	adloffii	35/30	N.	eggeri	30/25	
A. (Cynolebias)	affinis	45/35	N.	elongatus	45/40	
A. (Cynolebias)	alexandri	35/30	N.	guentheri	40/35	
A. (Cynolebias)	bellottii	60/35	N.	hassoni	45/40	
A. (Cynolebias)	gymnoventris	35/35	N.	kilomberoensis	35/30	
A. (Cynolebias)	nigripinnis	35/30	N.	kirkii	40/35	
A. (Cynolebias)	toba	45/35	N.	korthausae	45/35	
Galopanchax	monroviae	55/50	N.	melanospilus	50/45	
C.	occidentalis	60/50	N.	lucius	70/65	
Crenichthys	baileyi baileyi	40/40	N.	neumanni	60/55	
Cualac	tessellatus	45/45	N.	palmqvisti	35/30	

**CLASS "F" SIZE SHEET**

Where two sizes are given the first refers to the Male and the second the Female

Nothobranchius	rubripinnis	40/35
N.	rachovii	40/35
Notholebias	minimus	20/15
Pachypanchax	arnoulti	60/60
P.	playfairii	80/70
Papiliolebias	bitteri	35/35
Poropanchax	normani	30/30
Procatopus	aberrans	45/45
P.	nototaenia	50/45
P.	similis	50/45
Pterolebias	longipinnis	100/90
Rachovia	brevis	50/45
Rachovia	pyropunctata	45/40
Rivulus	cylindraceus	40/35
Scriptaphysemon	schmitti	40/35
Simpsonichthys (Cynolebias)	boitoni	25/30
S.	bokermanni	45/35
S.	chacoensis	45/35
S.	constanciae	35/30
S.	faeclatus	35/30
S.	flammeus	30/25
S.	flavicaudatus	40/35
S.	fulminantis	30/25
S.	magnificus	30/20
S.	myersi	35/30
S.	punctulatus	35/35
S.	sentanae	35/25
S.	similis	45/45
S.	stellatus	35/30
Terranatos	dolichopterus	25/20



**CLASS "G" SIZE SHEET**

**Where two sizes are given the first refers to the Male and the second the Female**

Acanthicus	adonis	260	Hartia	jerdoni	30
A.	hystrix	260	H.	fowleri	140
Acanthodoras	cataphractus	130	Helogenes	marmoratus	90
A.	spinosissimus	130	Hemiancistrus	subviridis (L-200)	180
Agamyxis	pectinifrons	150	Hemiodontichthys	acispenserinus	130
Akysis	vespa	70	Hisonotus	nigricauda	35
Amaralia	hypsiura	90	Hoplosternum	littorale	180
Amblyceps	mangois	80	Horabagrus	nigricollaris	130
Anadoras	weddellii	110	Hyalobagrus	ornatus	35
Ancistrus	dolichopterus	130	Hypancistrus	zebra (emperor)	60
A.	lineolatus	130	Hypoptopoma	gulare	65
A.	temminckii	120	H.	inexpectatum	75
A.	triradiatus	105	H.	thoracatum	75
Ariopsis	seemanni	260	Hypostomus	cochliodon	180
Astrodoras	asterifrons	90	H.	hondae	155
Auchenipterichthys	longimanus	160	Imperfinis	borodini	90
A.	thoracatus	115	I.	longicaudus	135
A.	nuchalis	105	I.	minutus	80
Baryancistrus	dementoides (L-200)	170	Kryptopterus	bicinthis	80
Batasio	fluvialis	70	K.	macrocephalus	90
B.	tigrinus	50	L-018	Gold nugget	200
Batrochoglanis	acanthochiroides	160	L-066	Hypancistrus sp	130
B.	ranius	100	L-128	Hemiancistrus sp	170
Brachyrrhamdia	imitator	75	L-144	Ancistrus sp	90
B.	marthae	90	L-204	Panaque sp	110
B.	meesi	95	L-208	Ancistrini sp	110
Bunocephalus	amaurus	100	L-260	Queen arabesque	140
B.	colombianus	110	Lamontichthys	filamentosus	200
B.	coracoideus (bicolor)	100	Leiocassis	micropogon	180
B.	knerii	80	L.	poecilopterus	135
B.	larai	90	Leporacanthicus	galaxias (white spot)	160
B.	verrucosus	90	L.	galaxias (yell/orange)	210
Callichthys	callichthys	155	Lephoplosternum	pectorale	75
Centromochlus	perugiae	65	Liosomadoras	oncinus	130
Chaca	bankanensis	170	Lophiobagrus	cyclurus	90
C.	chaca	170	Loricaria	sp.rio atabapo	140
Chaetostoma	thomsoni	90	Macrotocinclus	affinis	40
Chrysiichthys	longipinnis	240	Megalechis	thoracata	170
Cordylancistrus	platyrhynchus	100	Microglanis	carlae	50
Dekeyseria	pulcher	60	M.	iheringi	75
Dianema	longibarbis	80	M.	parahybae	65
D.	urostratum	95	M.	poecilus	65
Erethistea	pusillus	35	Microsynodontis	batesii	80
Farlowella	acus	170	M.	polli	50
F.	amazonum	180	Mochokiella	paynei	65
Gagata	cenia	110	Mystus	armatus	105
Goeldiella	eques	210	M.	falcarius	190
Hara	filamentosa	20	M.	gulio	240
H.	hara	70	M.	leucophasis	180
H.	horai	50	M.	micracanthus	90
H.	longissima	55	Nannoctopoma	sp. Peru	30

**CLASS "G" SIZE SHEET**

Where two sizes are given the first refers to the Male and the second the Female

Nanobagrus	immaculatus	25	Rineloricaria	microlepidogaster	85
Neotropius	atherinoides	50	R.	parva	155
Orinocodoras	eigenmanni	160	Schilbe	intermedius	280
Ossancora	eigenmanni	130	Schilbe	marmoratus	110
Otocinclus	cocama	25	Scorplodoras	heckelli	110
O.	flexilis	50	Sturisma	panamense	170
O.	vestitus	45	Synodontis	angelicus	200
O.	vittatus	45	S.	aterimus	100
Panaeolus	albomaculatus	200	S.	batensoda	155
P.	maccus (L-104)	70	S.	batesii	110
Panaque	nigrolineatus	200	S.	brichardi	120
P.	suttonorum	160	S.	caudalis	100
Parailia	congica	80	S.	clarias	170
Pareutropius	buffel	85	S.	decorus	210
P.	debauwi	60	S.	eupterus	145
Parotocinclus	britskii	35	S.	filamentosus	180
P.	cristatus	35	S.	frontosus	210
P.	jumbo	50	S.	greshoffi	180
P.	maculicauda	40	S.	macrops	155
P.	spilosoma	45	S.	multipunctatus	180
Peckolia	bachl	90	S.	nigrita	160
P.	brevis	100	S.	nigriventris	80
P.	compta	100	S.	nigromaculatus	250
P.	vittata	90	S.	njassae	135
Phractura	aneorgii	80	S.	notatus	210
Phyllonemus	typus	90	S.	nummifer	190
Pimelodella	gracilis	150	S.	ocellifer	160
P.	lateristriga	180	S.	ornatipinnis	140
Pimelodus	albofasciatus	210	S.	petricola	95
P.	pictus	105	S.	robbianus	130
Platydoras	costatus	190	S.	robertsi	70
P.	hancockii	90	S.	schall	260
Pistysilurus	mucosus	90	S.	schoutedeni	160
Platystacus	cotylephorus	220	S.	velfer	140
Pseudacanthicus	leopardus	240	S.	waterloti	140
Pseudancistrus	barbatus	150	Tatia	galaxias	90
Pseudohemiodon	apthanos	150	T.	intermedia	100
P.	lamina	160	T.	jaracatia	85
P.	laticeps	250	Trachycorystes	trachycorystes	215
Pseudomystus	laiacanthus	105	Trachydoras	paraguayensis	120
P.	siamensis	135	Trachelyichthys	decaradiatus	85
P.	stenomus	100	T.	exilis	85
Pseudorinelepis	genibarbis	110	Trachelyopterichthys	taenlatus	150
Psilorthynchus	sucatio	85	Trachelyopterus	galeatus	200
Rhinodoras	boehlkei	135	Tridensimilis	brevis	25
R.	dorbignyi	155	Vandellia	cirrrosa	25
Rineloricaria	fallax	165	Zungaro	zungaro	190
R.	hasemani	130			
R.	lanceolata	105			
R.	latirostris	160			
R.	lima	130			

## CLASS "Ga" SIZE SHEET

Where two sizes are given the first refers to the Male and the second the Female

Auchenoglanis	ahli	165
A.	occidentalis	360
Bagrus	docmak	360
B.	ubangensis	300
Bathyclarias	nyasensis	500
Calophysus	macropterus	300
Channallabes	apus	450
Clarias	angolensis	350
C.	fuscus	300
C.	garipepinus ( moesambicus )	500
Eremophilus	mutisii	260
Gymnallabes	typus	165
Hemisorubim	platyrhynchos	280
Heteropneustes	fossilis	280
Hypostomus	albopunctatus	180
H.	commersoni	305
H.	luteus	310
H.	margaritifera	210
H.	plecostomus	305
H.	regani	250
Leiarius	pictus	460
Pangasius	pangasius	350
Parauchenoglanis	ngamensis	165
Pernichthys	peruno	370
Platydomichthys	sturio	280
Pterygoplichthys	etentaculatus	350
P.	gibbiceps	255
P.	weberi	130
P.	xinguensis	220
Rhamdia	quelen	280
Scobinancistrus	aureatus	210
S.	pariolepos	170
Sorubim	lima	330

**CLASS "H" SIZE SHEET**

**Where two sizes are given the first refers to the Male and the second the Female**

Corydoras	acrensis	55	Corydoras	latus	75
C.	acutus	70	C.	leopardus	65
C.	adolfoi	55	C.	leucomelas	55
C.	aeneus	75	C.	longipinnis	70
C.	aeneus ( albino )	70	C.	loxozonus	60
C.	agassizii	70	C.	melanistiis	55
C.	amapaensis	70	C.	melanotaenia	70
C.	ambiacus	70	C.	melini	45
C.	araguayaensis	60	C.	metae	50
C.	arcuatus	80	C.	multimaculatus	55
C.	areio	60	C.	nanus	50
C.	armatus	50	C.	narcissus	75
C.	atropersonatus	50	C.	napoensis	45
C.	aurofrenatus	55	C.	negro	55
C.	axelrodi	50	C.	olapoquensis	60
C.	baderi	50	C.	ornatus	70
C.	bicolor	55	C.	osteocharus	70
C.	bifasciatus	55	C.	ourastigma	65
C.	bilineatus	55	C.	paleatus	75
C.	blochi	80	C.	paleatus ( albino )	65
C.	boesemani	45	C.	panda	50
C.	bondi	50	C.	pantanalensis ( C5 )	65
C.	brevirostris	55	C.	pulcher	65
C.	britekii	80	C.	punctatus	50
C.	C89 cf undulatus	50	C.	pygmaeus	30
C.	C141	60	C.	rabauti	55
C.	caudimaculatus	50	C.	reticulatus	65
C.	cochui	35	C.	robineae	70
C.	concolor	55	C.	robustus	85
C.	condiscipulus	55	C.	schwartzi	65
C.	coppenamensis	50	C.	semiaquilus	75
C.	crypticus	65	C.	septentrionalis	65
C.	dauidsandsi	80	C.	serratus	60
C.	deckeri C3	55	C.	seussii	65
C.	delphax	70	C.	similis	60
C.	diphyes	60	C.	sipaliwini ( bondi bondi )	50
C.	duplicaneus	55	C.	sodalis	60
C.	elegans	55	C.	solox	70
C.	eques	55	C.	spilurus	55
C.	ehrharti	50	C.	splendens	70
C.	filamentosus	50	C.	steindachneri	55
C.	geryi	65	C.	sterbai	65
C.	gomezi	50	C.	sychri	55
C.	gossei	60	C.	treitlii	70
C.	guspore	50	C.	trilineatus	55
C.	guyanensis	50	C.	undulatus	55
C.	habrosus	35	C.	virginiae	60
C.	haraldschultzi	75	C.	weltzmani	55
C.	hastatus	30	C.	zygatus	70
C.	jullii	55	Scleromystax	barbatus	90
C.	kanei	55	S.	macropterus	70
C.	lacerdai	55	S.	prionotos	65

## CLASS "Ha" SIZE SHEET

Where two sizes are given the first refers to the Male and the second the Female

Aspidoras	depinnai	40
A.	fuscoguttatus	45
A.	menzezi	50
A.	peuciradiatus	30
A.	poecilus	45
A.	sp. Goia (C-037)	40
A.	spilotus	45
A.	taurus	40
Brochis	multiradiatus	90

**CLASS "I" SIZE SHEET**

**Where two sizes are given the first refers to the Male and the second the Female**

**Betta Splendens**

## CLASS "J and K" SIZE SHEET

Where two sizes are given the first refers to the Male and the second the Female

### CLASS "J" SIZE SHEET

Boraras	brigitae	20	Rasbora	meinkenii	60
B.	maculatus	20	R.	paviana	90
B.	merah	20	R.	patrickyspi	60
B.	urophthalmoideus	30	R.	paucisqualis	65
Brevibora	dorsiocellata	55	R.	rasbora	85
Kottekalia	brittani	45	R.	reticulata	50
Microsasbora	rubescens	25	R.	rubrodorsalis	35
Rasbora	bankanensis	45	R.	ruttneri	45
R.	baliensis	40	R.	epiloperca	20
R.	borapetensis	45	R.	sumatrana	95
R.	brittani	45	R.	trilineata	60
R.	burguranensis	50	R.	vulcanus	55
R.	caudimaculata	130	R.	wilpita	60
R.	cephalotaenia	100	Rasboroides	vaterfloris	35
R.	daniconius	100	Rasbosoma	spiloperca	20
R.	dusonensis	110	Trigonopoma	gracile	45
R.	einthovenii	80	T.	pauciperforatum	50
R.	elegans	110	Trigonostigma	espei	30
R.	kalbarensis	25	T.	heteromorpha	40
R.	kalochroma	60	T.	somphongsi	25
R.	lacrimula	40	T.	hengeli	30

### CLASS "K" SIZE SHEET

Aphyocypris	lini	40/50	Devario	aequipinnatus	90
Danio	aesculapli	30	D.	annandalei	75
D.	albolineatus	50	D.	assamensis	100
D.	choprae	35	D.	auropurpureus	55/55
D.	dangila	75	D.	browni	70
D.	erythromicron	25	D.	chrysothaeniatus	55
D.	feagradei	65	D.	devario	65
D.	jaintianensis	45	D.	maetsaengensis	45
D.	kerri	40	D.	malabaricus	90
D.	kyathit	45	D.	pathirana	70
D.	margaritatus	25	D.	regina	90
D.	meghalayensis	50	D.	shanensis	60
D.	nigrofasciatus	30	D.	sondhi	55
D.	"putao"	35	D.	xyrops	90
D.	renio (frankei)	40	Esomus	danricus	90
D.	roseus	50	E.	metallicus	65
D.	sp. Hikari yellow & Blue	40	Laubuka	dadiburjori	40
D.	tinwini	25	L.	laubuca	40
Danionella	translucida	15	Microdevario	kubotai	20
Devario	acuticephala	35	Sundadanio	axelrodi	30

### CLASS "L" SIZE SHEET

Where two sizes are given the first refers to the Male and the second the Female

Acanthocobitis	botia	65	Pangio	muraeniformis	80
A.	rubidipinnis	130	P.	pangla	60
A.	urophthalmus	70	P.	semicincta	80
Balitora	brucei	50	P.	shelfordii	90
Homaloptera	confuzona	100	Schistura	balteata	50
H.	orthogoniata	110	S.	beavani	70
H.	tweedii	50	S.	corica	55
Lepidoccephalichthys	thermaisi	70	S.	mahnerti	65
Liniarhomaloptera	disparis	46	S.	notostigma	100
Nemacheilus	binotatus	65	S.	pridi	35
N.	corica	50	S.	spilota	80
N.	fasciatus	80	Serpenticobitis	octozona	55
N.	guentheri	60	Sewella	lineolata	55
N.	longistriatus	80	S.	sp "Spotted"	80
N.	selangoricus	50	Traccatichthys	pulcher	80
N.	triangularis	60	T.	taeniatus	45
Pangio	anguillaris	85	Tuberoschistura	arakanensis	20
P.	donae	90	Vaillantella	maassi	90
P.	kuhlii	90	Yunnanilus	brevis	55
P.	oblonga (javanicus)	85	Y.	cruciatus	45

### CLASS La SIZE SHEET

Ambastaja	nigrolineata	80	Parabotia	fasciata	140
A.	sldhimunki	85	Sinibotia	pulchra	90
Botia	almorhae	125	S.	robusta	120
B.	danio	85	Syncrossus (Botia)	beauforti	180
B.	histrionica	130	S. (Botia)	berdmorai	210
B.	kubotai	100	S. (Botia)	helodes	180
B.	lohachata	125	S. (Botia)	hymenophysa	180
B.	rostrata	80	Yasuhikotakia	caudipunctata	100
B.	striata	80	Y.	eos	80
B.	udomritthiruji	130	Y.	lecontei	130
Chromobotia (Botia)	macracanthus	210	Y.	modesta	130
Leptobotia	guilnensis	100	Y.	morleti	70
L.	taeniops	125	Y.	splendida	90



**CLASS "M" SIZE SHEET**

Where two sizes are given the first refers to the male and the second to the Female

Allomogurnda	nesolepis	45	Macrognathus	aculeatus	300
Ambassis	burnensis	80	M.	circumcinctus	310
A.	ambassis	90	M.	zebrinus	260
Barilius	bakeri	125	Marcusenius	macrolepidotus	210
Batrachocottus	balcalensis	200	M.	schilthuisiae	90
Brachygobius	xanthazonus	40	Mastacembelus	armatus	650
Brienomyrus	longlanalis	130	M.	ellipsifer	220
Butis	butis	130	M.	erythrotaenia	650
Carinotetraodon	lorfeti	50	M.	loennbergii	220
Channa	asiatica	210	M.	plagiostomus	300
C.	bleheri	160	Mogurnda	adpersa	120
C.	gachua	210	M.	mogurnda	135
C.	lucius	360	M.	variegata	90
C.	orientalis	210	Monocirrhus	polyacanthus	70
C.	pulchra	210	Monodactylus	argenteus	130
C.	stewartii	200	Mugilogobius	adela	40
Chlamydogobius	eremius	50	M.	chulaa	45
Cirrhinus	multiroella	130	M.	rambalaie	45
Colomesus	psittacus	130	M.	vaigouva	35
Datrioides	microlepis	240	Nandus	nandus	180
D.	quadrifasciatus	240	Notopterus	notopterus	500
Dormitator	maculatus	210	Opsarius	pulchellus	90
Eimotus	octozona	55	Osteochilus	melanopleurus	210
Eleotris	fusca	220	O.	vittatus	210
E.	melanosoma	120	Oxyeleotris	marmorata	275
E.	pisonis	100	Oxygaster	anomallura	80
E.	vittata	220	Pantodon	buchholzi	90
Erneacampus	ansorgii	155	Parachanna	africana	270
Erpetoichthys	calabaricus	500	Parachala	oxygastroides	180
Garra	cambodgiensis	130	Parambassis	baculis	50
G.	ceylonensis	130	P.	ranga	60
G.	congoensis	90	Periophthalmus	barbarus	130
G.	flavatra	80	Polycentrus	schomburgkii	90
G.	nasuta	130	Polypterus	delhezi	300
G.	rufa	130	P.	omatipinnis	400
Giuris	margaritacea	300	P.	palmas	210
Glossogobius	giuris	300	P.	senegalus	350
Gnathonemus	petersii	190	Protopterus	annectans	700
Gobioides	broussonnetii	350	Pristolepis	grootii	170
Gobiopterus	brachypterus	30	Pseudogobius	javanicus	40
G.	chuno	30	P.	olorum	75
Gyrinocheilus	aymonieri	180	Raiamas	christyi	110
Hampala	macrolepidota	260	Redigobius	baileatus	45
Hephaestus	carbo	300	Sawbwa	resplendens	35
Hippichthys	spicifer	160	Scatophagus	argus	210
Horadandia	aturoraki	25	Schismatogobius	ampluvinculus	40
Hypseleotris	compressa	90	S.	marmoratus	35
H.	cyprinoides	80	Selenotoca	multifasciata	155
H.	galli	70	Stigmatogobius	sedanundo	70
Indostomus	paradoxus	25	Stiphodon	elegans	50
Luciosoma	spilopleura	210	S.	ornatus	45

## CLASS "M" SIZE SHEET

Where two sizes are given the first refers to the male and the second to the Female

Tateumдина	ocellicauda	50
Tetraodon	biocellatus	180
Tetraodon	cochinchinensis	130
T.	cutcutia	130
T.	miurus	130
Toxotes	chatareus	210
T.	jaculatrix	200
T.	lorentzi	150
T.	oligolepis	110

**CLASS "Ma" SIZE SHEET**

Where two sizes are given the first refers to the Male and the second to the Female

Balantiocheilus	melanopterus	300	Labeo	chrysopekadion	430
Crossocheilus	oblongus	130	L.	congoro	210
C.	reticulatus	110	L.	cyclorhynchus	260
Epatzeorhynchos	bicolor	130	L.	cylindricus	300
E.	frenatus	130	L.	forakalii	310
E.	frenatus albino	120	L.	parvus	260
E.	kalopterus	125	L.	ruddi	260
E.	munense	130	L.	senegalensis	350

**CLASS "Mb" SIZE SHEET**

Oryzias	celebensis	40/35	Oryzias	matanensis	35/35
O.	dancena	35/35	O.	mekongensis	20/20
O.	latipes	35/35	O.	minutillus	20/20
O.	marmoratus	35/35	O.	nigrimas	50/50
			O.	woworae	30/30

**CLASS "Mc" SIZE SHEET**

Bedotia	madagascariensis	90	Melanotaenia	lecutris	90/90
B.	sp "Namorona"	90	M.	maccullochi	75/75
Cairnsichthys	rhombosomoides	60/55	M.	nigrans	70/70
Chilatherina	axelrodi	80/80	M.	papuae	50/50
C.	bleheri	90	M.	parkinsoni	90/90
C.	sp. Kali Biru	90/75	M.	parva	65/65
C.	sentaniensis	90/75	M.	pierucciae	80/80
Glossolepis	dorityi	90/90	M.	praecox	80/80
G.	incisus	110/90	M.	splendida	
G.	maculosus	45/45		inornata	90/80
G.	multisquamata	100/80	M.	splendida	
G.	pseudoincisus	70/65		rubrostriata	120/115
G.	ramuensis	55/45	M.	splendida	
G.	wanamensis	80/75		splendida	90/80
Iriatherina	wamari	40/30	M.	trifasciata	130/90
Marosatherina	ladigesii	60	M.	utcheensis	70/70
Melanotaenia	affinis	95/80	Pseudomugil	connieae	45
M.	angfa	110	P.	cyanodorsalis	25/45
M.	australis	80/70	P.	furcatus	45/35
M.	boesemani	85/85	P.	gertrudae	30
M.	eachamensis	60/55	P.	ivantsoffi	35
M.	exquisita	60/45	P.	mellis	25
M.	fluviatilis	100/70	P.	paskai	25
M.	gracilis	65/55	P.	reticulatus	30/30
M.	herbertaxelrodi	80/80	P.	signifer	35/35
M.	irianjaya	80	P.	tenellus	25
M.	parkinsoni	90/80	Rhadinocentrus	ornatus	60/35
M.	parva	65/65			
M.	pierucciae	80/80			
M.	praecox	60/60			

## CLASS "O" and P" SIZE SHEET

Where two sizes are given the first refers to the Male and the second the Female

### CLASS "O" SIZE SHEET

Poecilia reticulata ( wild type ) 25/55

#### SHORT BODIED VARIETIES

Poecilia reticulata	Bottom Swordtail	25/55
Poecilia reticulata	Cofertail	25/55
Poecilia reticulata	Double Swordtail	25/55
Poecilia reticulata	Lyretail	25/55
Poecilia reticulata	Metropolitan	25/55
Poecilia reticulata	Natural	25/55
Poecilia reticulata	Pintail	25/55
Poecilia reticulata	Robson	25/55
Poecilia reticulata	Roundtail	25/55
Poecilia reticulata	Scalloptail	25/55
Poecilia reticulata	Speartail	25/55
Poecilia reticulata	Superba	25/55
Poecilia reticulata	Topsword	25/55
Poecilia reticulata	Wedgetail	25/55

#### LONG BODIED VARIETIES

Poecilia reticulata	Deltatail	35/55
Poecilia reticulata	Dovetail	35/55
Poecilia reticulata	Fantail	35/55
Poecilia reticulata	Long Dorsal Veiltail	35/55
Poecilia reticulata	Original Veiltail	35/55
Poecilia reticulata	Scarftail	35/55
Poecilia reticulata	Short Dorsal Veiltail	35/55

### CLASS "P" CULTIVATED SIZE SHEET

Poecilia	latipinna	80/90
P.	mexicana	75/90
P.	sphenops	50/80
P.	vellifera	90/95
P.	wingel	25/55
Xiphophorus	hellerii	70/110
X.	maculatus	40/50
X.	variatus	45/50

## CLASS "Q and R" SIZE SHEET

Where two sizes are given the first refers to the Male and the second the Female

### CLASS "Q" SIZE SHEET

Xiphophorus	helleri (wild type)	60/90		
Xiphophorus	alvarezii	55/65	Xiphophorus	multilineatus
X.	birchmanni	50/50		( long sword ) 35/40
X.	clemenciae	40/45		( short sword ) 30/45
X.	continens	25/35	X.	nezahualcoyotl 45/55
X.	cortezii	45/45	X.	nigrensis (long sword) 30/35
X.	kallmani	70/100	X.	nigrensis (short sword) 25/35
X.	malinche	45/50	X.	pygmaeus 25/35
X.	mayae	70/100	X.	signum 70/90
X.	montezumae	55/60		

### CLASS "R" SIZE SHEET

Xiphophorus	maculatus (wild type)	35/45		
X.	variatus (wild type)	40/45		
Xiphophorus	andersi	35/45	Xiphophorus	meyeri 25/40
X.	couchianus	30/40	X.	milleri 35/45
X.	evelynae	40/45	X.	xiphidium (all forms) 30/40
X.	gordoni	30/40		

## CLASS "S" SIZE SHEET

Where two sizes are given the first refers to the Male and the second the Female

Limia	caymanensis	30/35
L.	dominicensis	40/65
L.	dominicensis ( americana )	35/50
L.	fuscumaculata	30/40
L.	garnieri	30/35
L.	groseidens	50/60
L.	heterandria	35/50
L.	immaculata	25/45
L.	melanogaster	45/60
L.	miragoanensis	35/45
L.	nigrofasciata	55/60
L.	ornata	40/60
L.	pauciradiata	40/60
L.	perugiae	50/65
L.	rivasi	25/35
L.	sulphurophila	35/45
L.	tridens	30/40
L.	versicolor	45/65
L.	vittata	60/80
L.	yaguajali	40/60
L.	zonata	45/50
Micropoecilia	branneri	30/35
M.	picta	30/45
Pamphorichthys	hasemani	20/25
P.	hollandi	20/25
P.	minor	20/25
P.	scalpidens	20/40
Poecilia	butteri	70/80
P.	costeiacensis	65/85
P.	caucana	30/45
P.	chica	35/50
P.	elegans	40/50
P.	formosa ( females only )	70
P.	gilli	60/75
P.	hispaniolana	45/65
P.	kykesis	85/90
P.	labipunctata	50/60
P.	maylandi	80/100
P.	ori	65/75
P.	parae	35/40
P.	petenensis	85/90
P.	salvatoris ( liberty )	70/105
P.	sphenops	60/80
P.	sulphuraria	35/40
P.	teresae	70/85
P.	wingel (endlers) (wild type)	25/60
P.	vivipara	50/70

**CLASS "T" SIZE SHEET**

**Where two sizes are given the first refers to the Male and the second the Female**

Alfaro	cultratus	45/65	Gambusia	sexradiata	25/35
A.	huberi	45/60	G.	speciosa	30/45
Belonesox	belzanus	90/130	G.	vittata	30/40
Brachyraphis	cascajalensis	40/50	G.	wrayi	40/45
B.	episcopi	30/45	G.	xanthosoma	35/35
B.	hartwegi	30/45	G.	yucatanana	35/45
B.	hessfeldti	30/45	Girardinus	creolus	35/60
B.	holdridgei	35/45	G.	cubensis	25/40
B.	olomina	40/50	G.	denticulatus	35/50
B.	"palenque"	30/45	G.	falcatus	35/50
B.	parismina	40/55	G.	metallicus	40/55
B.	punctifer	30/50	G.	metallicus(black chin)	35/50
B.	rhabdophora	40/50	G.	microdactylus	35/55
B.	roseni	35/50	G.	uninotatus	40/66
B.	roswithae	35/50	Heterandria	anzuetoi	45/60
B.	terrabensis	40/55	H.	attenuata	35/60
Carlihubbsia	kidderi	25/35	H.	bimaculata	50/80
C.	stuarti	25/35	H.	cataractae	40/55
Cnesterodon	carnegiei	20/35	H.	dirempta	35/60
C.	decemmaculatus	20/35	H.	formosa	20/35
Gambusia	affinis	30/45	H.	jonesii	45/65
G.	afvarezi	25/35	H.	litoperas	40/60
G.	amistadensis	20/30	Heterophallus	milleri	20/30
G.	atrora	25/35	H.	rachovii	20/30
G.	aurata	30/35	Neoheterandria	cana	20/35
G.	beebei	45/80	N.	elegans	20/25
G.	dominicensis	25/60	N.	tridentiger	20/30
G.	echeagarayl	20/30	Phallochthys	amates	35/45
G.	eurystoma	25/30	P.	fairweatheri	30/40
G.	geigei	20/35	P.	quadripunctatus	20/30
G.	gelseri	25/30	P.	tico	20/35
G.	georgei	25/40	Phallocoeros	caudimaculatus	25/45
G.	heterochir	20/40	Phalloptychus	elgenmanni	20/30
G.	hispaniolee	30/45	P.	januarius	20/35
G.	holbrookii	30/45	Phallotorynus	fasciolatus	20/30
G.	hurtadol	25/35	P.	juvundus	20/30
G.	krumholz	35/45	P.	victoriae	20/30
G.	lemaitrei	30/35	Poecilopsis	baenschi	25/40
G.	longispinis	25/40	P.	balsas	20/40
G.	luma	30/35	P.	catemaco	30/45
G.	marshi	30/45	P.	elongata	60/100
G.	melapleura	35/45	P.	fasciata	20/35
G.	nicaraguensis	25/30	P.	gracilis	25/45
G.	nobilis	30/35	P.	hnilickai	25/40
G.	panuco	30/45	P.	infans	30/40
G.	pseudopunctata	30/55	P.	latidens	20/30
G.	punctata	45/60	P.	lucida	25/40
G.	puncticulata	30/45	P.	monacha	20/35
G.	regani	25/35	P.	occidentalis	25/45
G.	rhizophorae	30/40	P.	paucimaculata	30/35
G.	senilis	30/50	P.	presidionis	30/35

## CLASS "T" SIZE SHEET

Where two sizes are given the first refers to the Male and the second the Female

Poecilopsis	prolifca	20/35
P.	retroplnna	45/70
P.	scarlii	30/45
P.	tumeri	25/35
P.	tumubarensis	35/60
P.	viriosa	25/45
Priapella	bonita	45/50
P.	compressa	35/45
P.	intermedia	40/50
P.	olmecae	40/50
Priapichthys	annectens	40/50
P.	chocoensis	30/35
P.	dariensis	25/35
P.	nigroventralis	20/35
P.	panamensis	25/35
P.	puetzi	35/50
Pseudopoecilia	austrocolumbiana	35/35
P.	festae	30/35
Pseudoxiphophorus	obliquus	40/55
Quintana	arizona	20/40
Scolichthys	greenwayi	25/40
S.	iota	20/30
Tomeurus	gracilis	45/55
Xenodexia	ctenolepis	35/40
Xenophellus	umbratilis	35/45



### CLASS "Ta" SIZE SHEET

Where two sizes are given the first refers to the Male and the second the Female

Allodontichthys	hubbei	45/45	Goodea	atripinnis	65/90
A.	polylepis	55/65	G.	gracilis	65/85
A.	tamazulae	75/55	Hubbsina	turneri	40/45
A.	zonistius	45/45	Ilyodon	furcidens	80/95
Alloophorus	robustus	80/100	I.	lennoni	65/75
Allotoca	catarinae	45/70	I.	whitell	55/65
A.	dlazi	90/100	I.	xantusi	100/100
A.	dugesii	40/50	Skiffia	bilineata	25/40
A.	gostinei	30/45	S.	francesae	40/45
A.	maculata	50/60	S.	lemmae	45/50
A.	meeki	65/80	S.	multipunctata	60/65
A.	regalis	60/70	Skiffia ( species )	black beauty	40/45
Allotoca ( species )	"tarascan b.b"	50/60	Skiffia ( species )	zacapu sewfin	25/35
Ameca	splendens	60/75	Xenophorus	caplivus	45/50
Ataeniobius	toweri	55/70	Xenotaenia	resolanae	45/75
Chapatichthys	encaustus	50/65	Xenotoca	eiseni	45/50
C.	pardalis	50/60	X.	melanosoma	50/80
C.	peraticus	45/55	X.	variata	45/60
Characodon	audax	40/45	Zoogoneticus	tequila	35/45
C.	lateralis	45/55	Z.	purhepachus	45/50
Girardinichthys	multiradiatus	30/45	Z.	quitzeoensis	45/50
G.	viviparus	35/50			

### CLASS "Tb" SIZE SHEET

Dermogenys	montana	50/80	Nomorhamphus	ebrardtii	80/80
D.	pusilla	50/60	N.	hageni	60/80
D.	vogti	65/85	N.	liemi	55/80
Hemirhamphodon	chrysopunctatus	75/75	N.	megarrhamphus	60/90
H.	phaiosoma	85/65	N.	phillippinus	50/55
H.	pogonognathus	70/70	N.	towoethi	70/70
H.	tengah	40/40	N.	vivipara	55/75
Nomorhamphus	brembachii	45/45	N.	weberi	65/85
N.	celebensis	65/75			

### CLASS "Tc" SIZE SHEET

Anableps	anableps	165/200	Jenynsia	lineata	35/60
A.	dowei	190/220	J.	multidentata	55/70
A.	microlepis	190/220			

## CLASS "W" SIZE SHEET

**Where two sizes are given the first refers to the Male and the second the Female**

Abbotina	rivularis	70	Lepomis	gibbosus	180
Abramis	brama	180	L.	gulosus	210
Acanthomodeus	chankaensis	90	L.	humilis	90
Acheilognathus	asmussii	120	L.	macrochirus	180
A.	barbatulus	90	L.	marginatus	140
A.	longipinnis	90	L.	megalotis	180
A.	macropterus	120	L.	microlophus	210
Acrossocheilus	paradoxus	100	L.	punctatus	130
Albumoides	bipunctatus	90	L.	symmetricus	70
Albumus	albumus	130	Leucaspis	delineatus	90
Ammocrypta	beanii	45	Leuciscus	idus	260
Anguilla	anguilla	600	L.	idus (gold)	210
Barbatula	barbatula	150	L.	leuciscus	180
Carassius	carassius	260	Luxilus	cerasinus	90
Chologaster	comutus	130	L.	coccogenia	110
Chrosomus	eos	65	L.	comutus	170
C.	erythrogaster	75	Micropterus	doiomiou	300
C	oreas	55	M.	salmoides	280
Cobitis	laenia	105	Misgurnus	anguillicaudatus	180
Coltus	gobio	90	M.	fossilis	190
Ctenopharyngodon	idella	300	Nipponocypris	temminckii	130
Cyprinella	lutrensis	70	Notemigonus	crysoleucas	180
Cyprinus	carpio	350	Notropis	chrosomus	70
C.	carpio (mirror)	350	N.	cummingsae	65
C.	carpio (leather)	350	N.	lutipinnis	80
Elassoma	evergladei	30	Perca	fluvialilis	260
E.	zonatum	35	Percina	maculata	65
Enneacanthus	chaetodon	80	Phoxinus	phoxinus	90
Etheostoma	australe	45	Pknephales	notatus	90
E.	blennioides	85	P.	promelas	80
E.	caeruleum	50	P.	promelas(gold)	80
E.	flabellare	55	Pseudogastromyzon	cheni	40
E.	fusiforme	45	P.	fasciatus	60
E.	gracile	45	P.	myersi	60
E.	kanawhae	60	Pseudogobio	esochus	45
E.	nigrum	55	Pseudorasbora	parva	90
E.	radiosum	60	Pteronotropis	hubbsi	50
E.	rufilineatum	60	P.	hypsoleopterus	70
E.	spectabile	50	P.	welaka	55
E.	tetrazonum	65	Pungitius	pungitius	50/60
E.	variatum	90	Rhinichthys	atratius	90
Forbesichthys	agassizii	60	R.	cataractae	90
Gasterosteus	aculeatus	70/80	Rhinogobius	brunneus (all forms)	70
Gobio	gobio	140	R.	candidienus	70
Gymnocephalus	cernua	160	R.	duosipitus ( wui )	45
Hemiculter	bleekeri	130	R.	flumineus	50
H.	leuciscuius	130	R.	giurinus	60
Hemimyzon	formosanus	70	R.	zhoui	40
Hypophthalmichthys	molitrix	350	R. Species 1	as per photo -	70
Jinshaia	sinensis	70	R. Species 2	-index 1 to 5	70
Lepomis	cyanelus	180	Rhodeus	amanus	70

## CLASS "W" SIZE SHEET

Where two sizes are given the first refers to the Male and the second the Female

Rhodeus	atremius	80
R.	lighti	45
R.	ocellatus	70
R.	sericeus	70
R.	suigensis	70
Rutilus	rubii	180
R.	rutilus	190
Sarcocheilichthys	czerskii	70
S.	kiangsiensis	110
S.	lacustris	110
S.	nigripinnis nigripinnis	100
S.	parvus	70
S.	sinensis fulkiensis	110
S.	sinensis sinensis	110
Scardinius	erythrophthalmus	180
S. (golden variety)	erythrophthalmus	180
Sinogastromyzon	hsiahsiensis	70
S.	szechuanensis	70
S.	wui	90
Squalidus	intermedius	90
Squalius	cephalus	260
S.	ghigii	70
Tanakia	tanago	80
Tanichthys	albonubes	35/40
T.	micagemmae	35/40
Tinca	tinca	330
T. (golden variety)	tinca	300
Tribolodon	brandtii	155
Umbra	krameri	90/100
U.	pygmaea	90/100
Zacco	platypus	130

