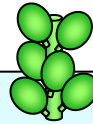


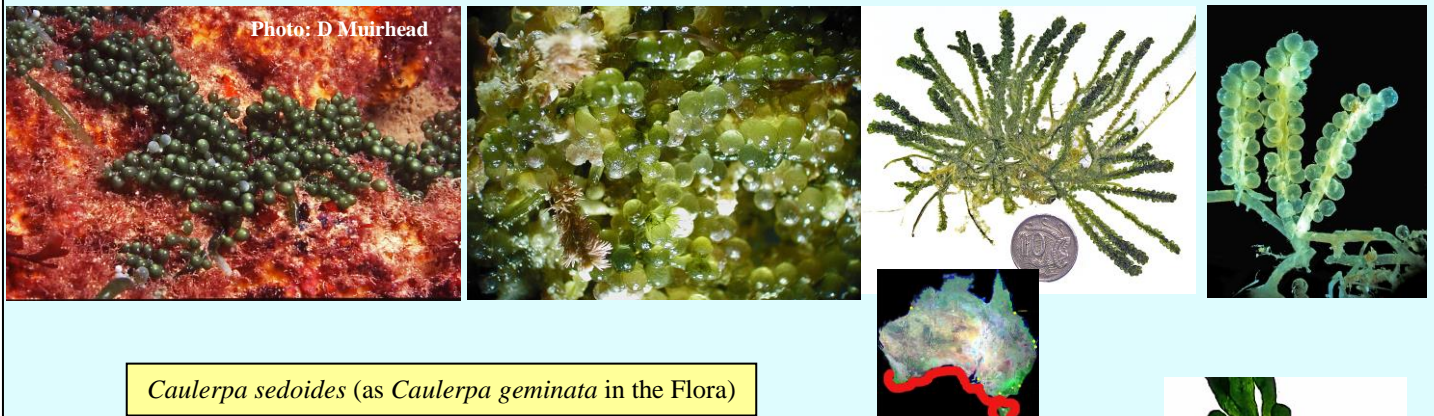
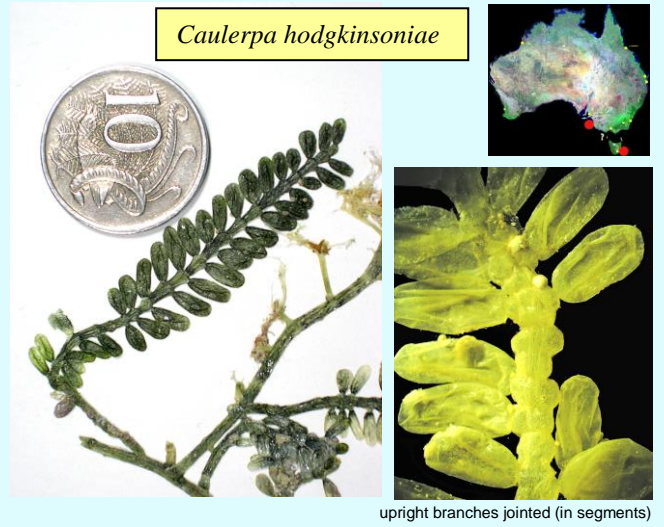
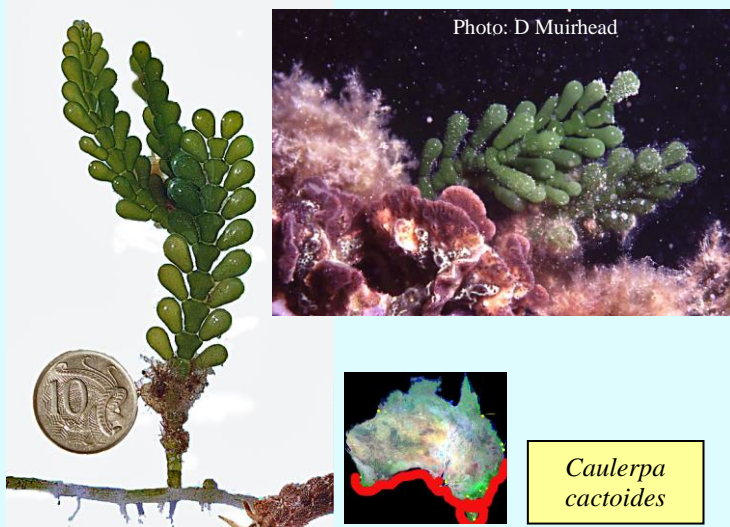
SOUTHERN AUSTRALIAN GENERA OF CAULERPA AT A GLANCE

(magnified detail may be colourless or have a black background; the coin used as a scale is 22 mm or almost 1" across)

I. ULTIMATE BRANCHES (RAMULI) BLADDER SHAPED

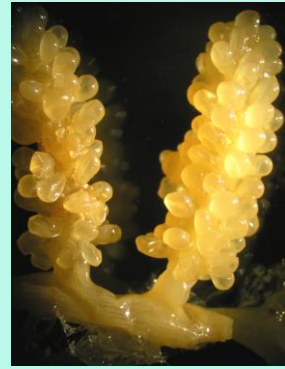
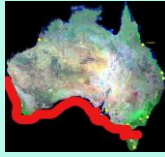


Ia. ramuli obvious, well spaced

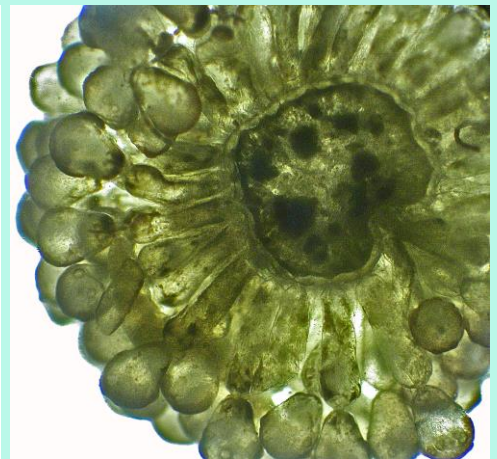


Ib. ramuli minute, crowded

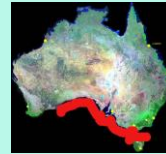
Caulerpa vesiculifera



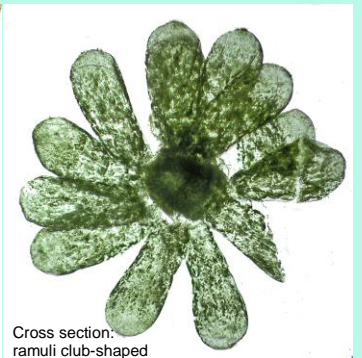
conical swellings below ramuli



Cross section: ramuli like drumsticks (pinched in the middle)

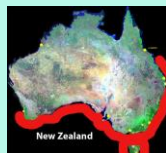


Caulerpa papillosa



Cross section: ramuli club-shaped

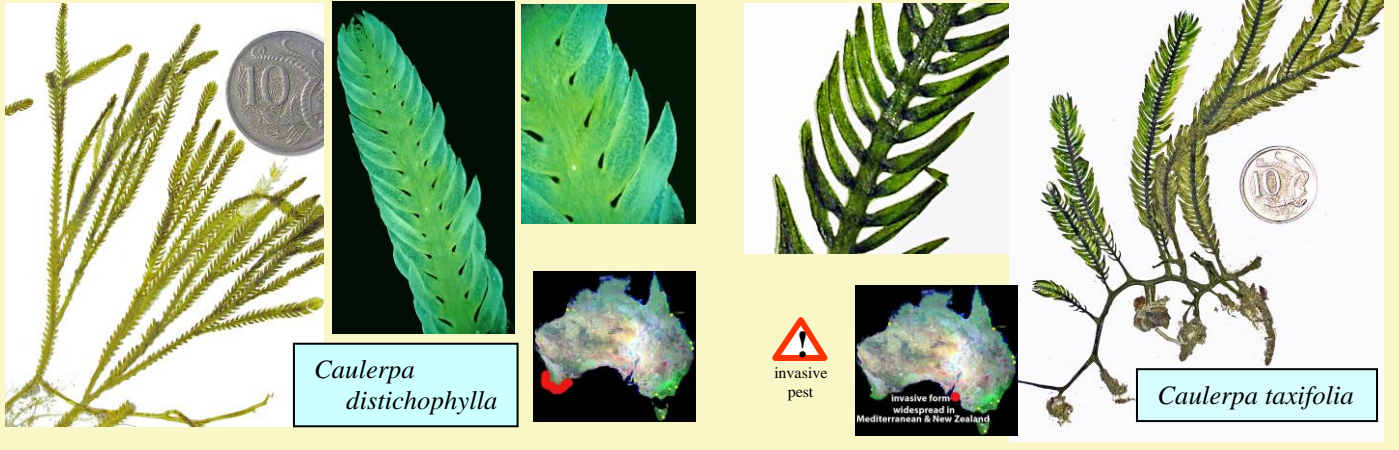
Caulerpa simpliciuscula



II. ULTIMATE BRANCHES (RAMULI) FLAT OR COMPRESSED



IIa. ramuli opposite



Caulerpa distichophylla

Caulerpa taxifolia

IIb. ramuli alternate



Caulerpa alternans

Caulerpa remotifolia

Caulerpa ellistoniae

Caulerpa scalpelliformis

II. ULTIMATE BRANCHES (RAMULI) CYLINDRICAL OR SPINY

IIa. ramuli unbranched



branching in rows

OR



branching radial



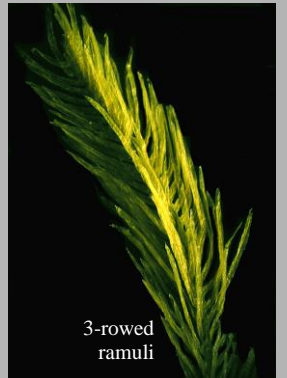
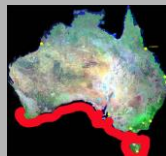
Caulerpa longifolia f. *longifolia*



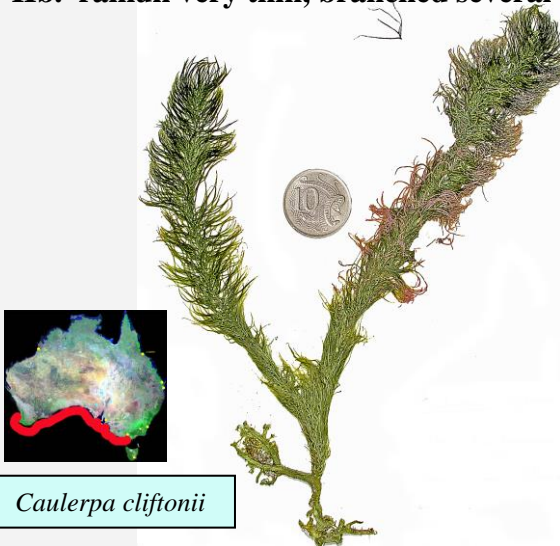
Caulerpa longifolia f. *crispata*



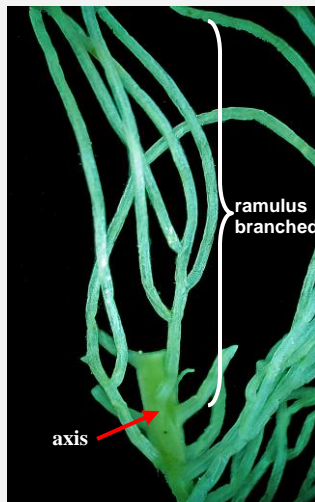
Caulerpa trifaria



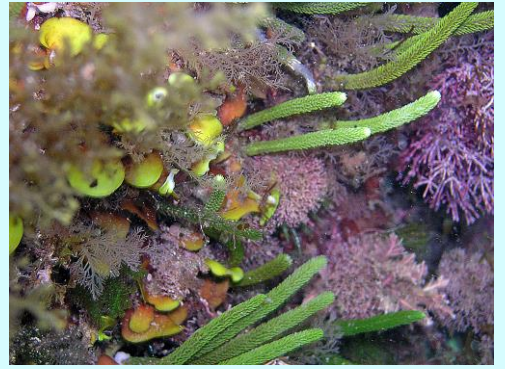
IIb. ramuli very thin, branched several times



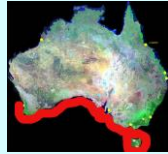
Caulerpa cliftonii



IIc. ramuli forked or spiny



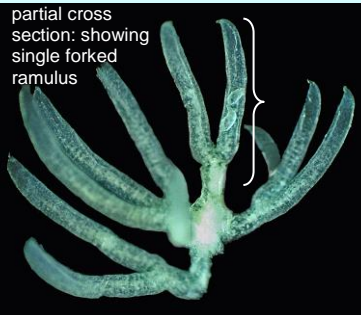
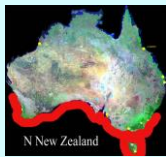
Caulerpa brownii



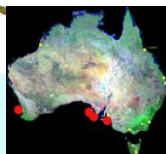
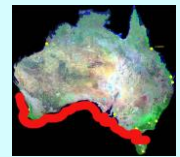
Caulerpa obscura



Caulerpa flexilis
var. *flexilis*



Caulerpa flexilis
var. *muelleri*



Caulerpa hedleyi

partial cross section showing forked ramuli