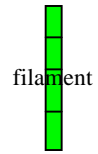


Percursaria percura
(C Agardh) Rosenvinge

50.470



MICRO
PLANT



Techniques needed and plant shape

Classification

Phylum: Chlorophyta; Order: Ulvales; Family: Ulvaceae

***Descriptive name**

green mangrove threads

Features



plants dirty green, of **unattached**, tangled threads (filaments) in shallow pools associated with mangroves and samphires

Special requirements



1. initially, threads have a single line of **box-shaped** cells
2. later, **2 lines** of regularly arranged cells occur in threads
3. chloroplasts occupy only part of the cell, wrapped around the inside of walls (**parietal**)

Occurrences

widely distributed in temperate and tropical coasts

Usual Habitat

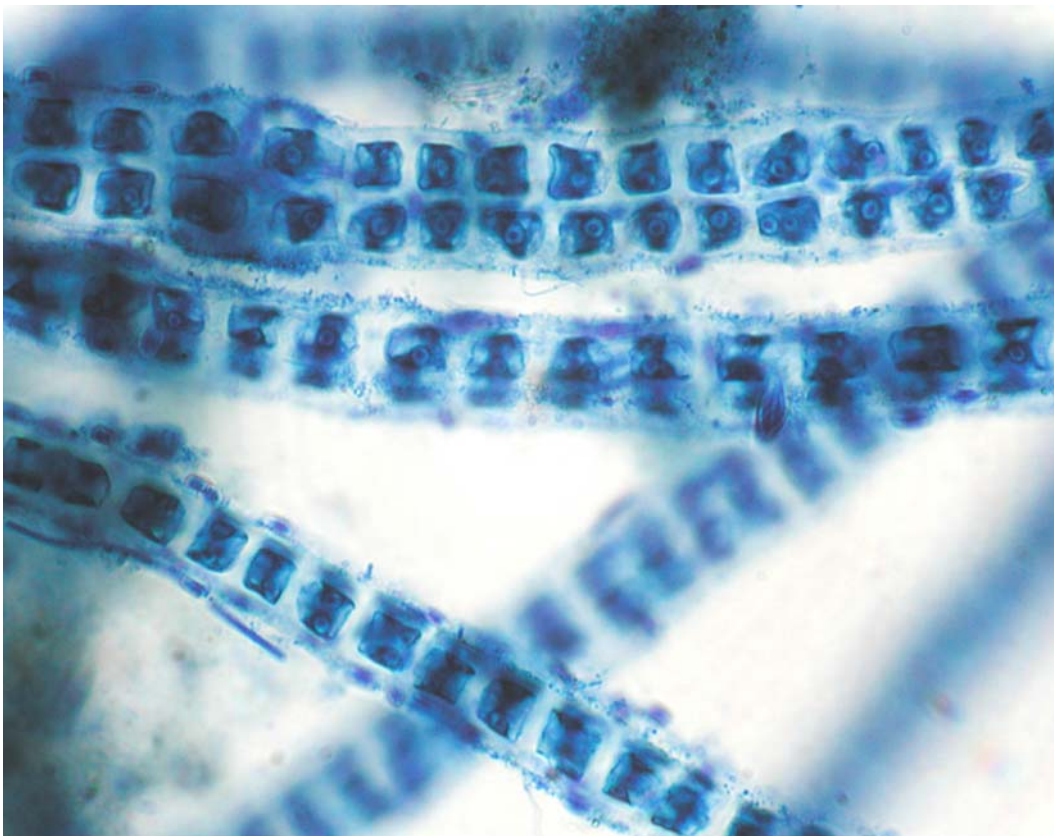
in sheltered bays, associated with mangroves and samphires

Similar Species

superficially like many filamentous algae (*Cladophora*, *Ulothrix*) but the chloroplasts are **parietal**

Description in the Benthic Flora Part I, pages 135-9

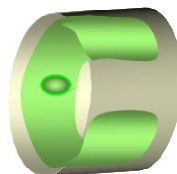
Details of Anatomy



1.

Percursaria percura stained blue and viewed microscopically at different magnifications

1. a young thread with single row of box-shaped cells and older threads with 2 rows (slide 6710)
2. cell detail (slide 7476), showing the characteristic small, box-shaped cells with stained chloroplasts wrapped like an incomplete girdle around the inside of the cell wall (parietal). Insert:- representation of a parietal chloroplast within a cell



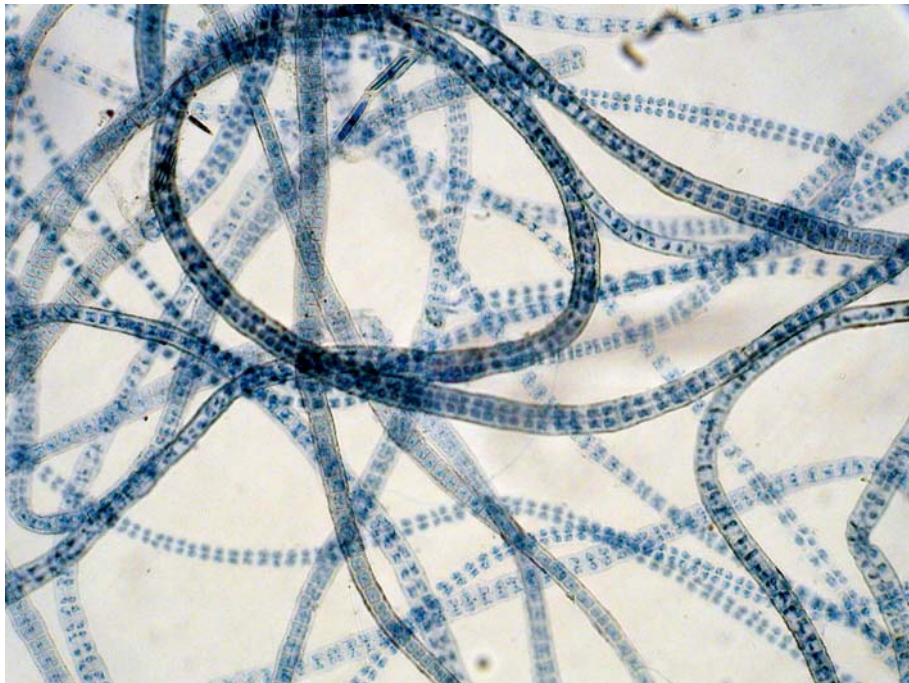
2.

* Descriptive names are inventions to aid identification, and are not commonly used
"Algae Revealed" R N Baldock, S Australian State Herbarium, October 2003

3.



4.



Percursaria percura (C Agardh) Rosenvinge

3. a specimen (A52661) from Port Fairy, Victoria, in a shallow pool amongst sapphires

4. mass of filaments with single cell lines in young and two lines in mature filaments (slide 7476)

* Descriptive names are inventions to aid identification, and are not commonly used
"Algae Revealed" R N Baldock, S Australian State Herbarium, October 2003