

*Schizoseris hymenena*  
(Zanardini) Womersley

45.880

Techniques needed and shape



MACRO  
PLANT



Classification

Phylum: Rhodophyta; Family: Delesseriaceae; Tribe: Nitophylloideae;  
Group: Myriogramme

\*Descriptive name

frilly blades

Features

plants red-brown, 100-200mm tall, *leaf-like*, flat-branched; basal parts consist of short, thin stalks up to 10mm long bearing at their ends several tall, lance-shaped, thin, blades with ruffled, wavy edges and *forked veins*

Occurrences

apparently restricted to SE Tasmania

Usual Habitat

limited information is available, but probably a shallow water estuarine species

Similar Species

*Schizoseris dichotoma* from New Zealand, but that is more forked with thicker veins

Description in the Benthic Flora

Part IIID, pages 114-117

Special Requirements

view microscopically to find:



Diagnosis can be difficult



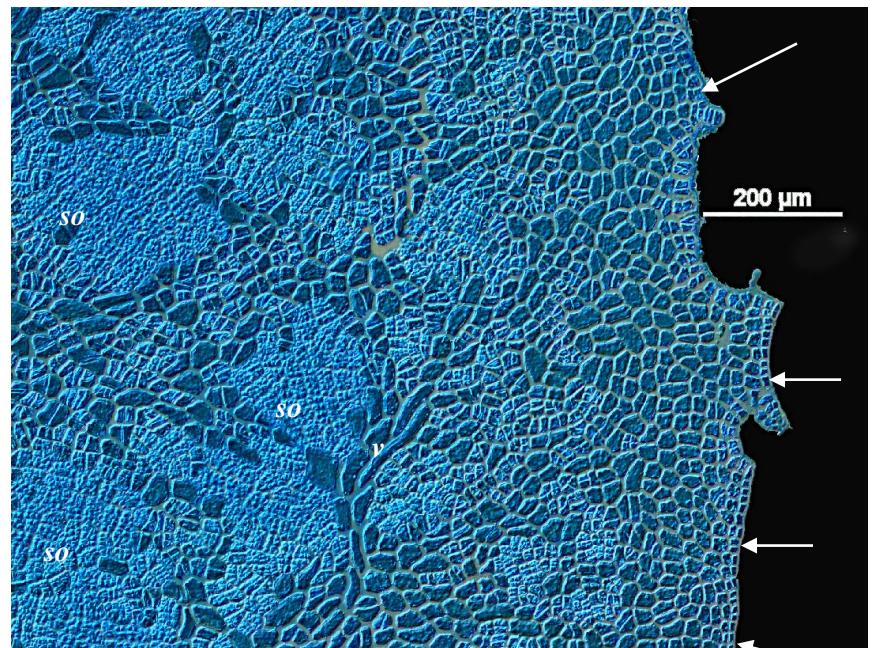
- at blade edges, *fringing* dividing cells, blades *one cell thick* except at veins and reproductive regions
- female structures (not shown below) form scattered swellings with small openings
- sporangial plants (not shown) with scattered, egg-shaped tetrasporangial patches
- male plants with *patches* of spermatangia. These are produced, in the outer cell layers of blades, *in blocks* corresponding to the generative cells

Details of Anatomy

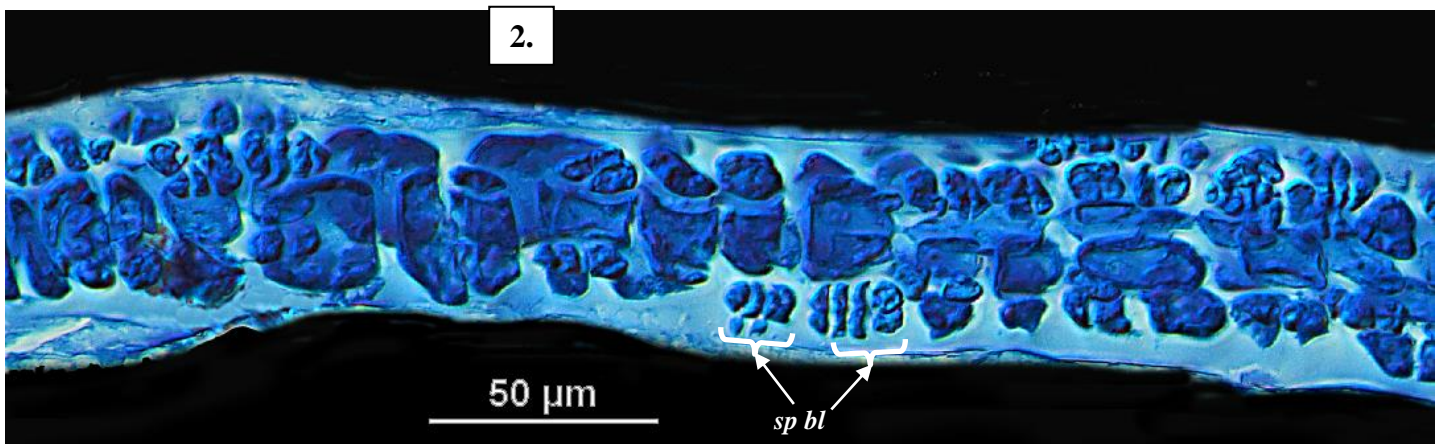
1.

male plants of *Schizoseris hymenena* stained blue and viewed microscopically

1. a surface view of the blade edge: fringing, very small dividing cells (arrowed), patches (sori, *so*) of spermatangia and the start of a vein (*v*) (slide 15396)
2. a cross section showing the blocks of spermatangia above generative cortical cells (*sp bl*) (slide 15397)



2.





3, 4. two magnifications of *Schizoseris hymenena* (Zanardini) Womersley (A64398) 4-5m deep, from Cloudy Lagoon, Tasmania: prominent veins, forked near the blade bases, blades frilly surface

5. microscope view of *Schizoseris hymenena* (slide 15396) stained blue showing a wide vein with a fork (**arrowed**) on the lower side

