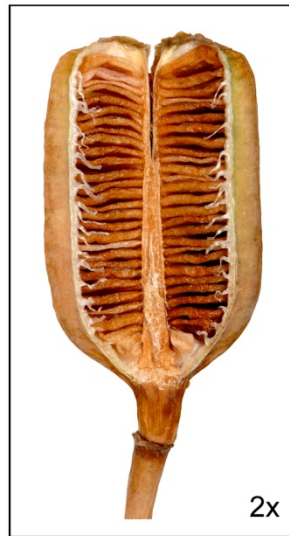




***Fritillaria montana* Hoppe ex W. D. J. Koch**

Accession number 612  
Photo. 16MAR2011  
Laurence Hill © 2011







Scientific name of specimen *Fritillaria montana* Hoppe ex W. D. J. Koch in Flora, 15(2): 476 (1832).

Collectors name and number P. J. Christian, PJC.282

Date of collection 10APR1979

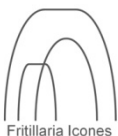
Collection Locality France: Provence-Alps-Côte-d'Azur, Alps-Maritimes, NW of Gourdon, Caussols

Habitat/Ecology In grassland with scattered *Juniperus*, *Corydalis solida* (L.) Clairv. and occasional *Crocus versicolor* Kew Gawl. on north facing, limestone slope, 1000 m.

Supplementary data Plant material – R Wallis & RB Wallis (2007). Material from this accession was included in [Day et al. 2014](#), Evolutionary relationships in the medicinally important genus *Fritillaria* L. (Liliaceae), Mol. Phylogenet. Evol. 80: 11-19(2014). [NCBI GenBank accession numbers](#): *matK*-LM993093, *rbcl*-LM992973, *rp16*-LM993203.

Synonym *Fritillaria caussolensis* Goaty & Pons ex Ardoino Fl. Alp. Marit. 75 (1867), *Fritillaria degeniana* Wagner in Magyar Bot. Lap. V. 189 (1906), *Fritillaria intermedia* A.Terracc., Atti Reale Accad. Sci. Napoli, II, 8(9): 5 (1900), *Fritillaria liburnica* B.de Lengyel in Rivista Soc. Stud. Fium. 1933-4, pp. 217-41 (1936); cf. Archiv. Bot., Forli 1938, xiv. (n. s. iv.) 176, *Fritillaria nigra* Mill. Gard. Dict. Ed. 8. N. 3 (1768), *Fritillaria orsiniana* Parl. Fl. Ital. ii. 411 (1857), *Fritillaria pollinensis* Terrac. in Atti Accad. Sci. Napoli, Ser. II, 8 (9):5 (1900), *Fritillaria tenella* subsp. *orsiniana* (parl.) Nyman, Consp. Fl. Eur. 722 (1882), *Fritillaria tenella* subsp. *pollinensis* (N. Terracc.) Zangh., Fl. Ital. 850 (1976) [comb. inval.], *Fritillaria tenella* var. *caussolensis* Goaty & Pons ex Nyman, Consp. Fl. Eur.: 722 (1882), *Fritillaria tenella* var. *intermedia* (N. Terracc.) Fiori, Nuova Fl. Italia 1: 250 (1923), *Fritillaria tenella* var. *micrantha* Beck ex Fiori & Paol. in A. Fiori & al., Fl. Italia 5: 46 (1909), *Fritillaria tenella* var. *orsiniana* (parl.) Fiori, Nuova Fl. Italia 1: 250 (1923), *Fritillaria tenella* var. *pollinensis* (N. Terracc.) Fiori, Nuova Fl. Italia 1: 250 (1923).

Document URL: [http://www.fritillariaicones.com/icones/ic600/Fritillaria\\_icons612.pdf](http://www.fritillariaicones.com/icones/ic600/Fritillaria_icons612.pdf)



## ***Fritillaria montana* Hoppe ex W. D. J. Koch**

Accession number 612

Photo. 16MAR2011

Laurence Hill © 2011