

ALUTEC

ALUTEC

INSERTION SYSTEM FOR FRAMED PHOTOVOLTAIC MODULES

- ▶ for frame heights of between 31 and 50 mm
- ▶ quick installation and easy maintenance
- ▶ robust and module-protective construction that provides excellent system design according to EN 1991-1

Creotecc has been producing their tried and tested insertion system ALUTEC for over ten years. With perfectly tailored profile geometry that is compatible with all conventional module frame heights and the necessary accessories, it can be used to quickly and easily install modules on practically any kind of roof and as well on building facades. The insertion technology eliminates the need to adjust or screw the modules. The ALUTEC system always delivers a homogenous, aesthetically pleasing PV system, even on uneven roofs. Plus the tension-free support of the modules prevents damage to the glass and makes maintenance easier.

AREAS OF APPLICATION



For conventional framed PV modules from diverse manufacturers and with various technologies



On pitched and flat roofs as well as facades achieving a standard width of 1.20 to 1.70 m



Carried out as stable intersecting constructions (for most kinds of pitched roofs) or as economical single-layer constructions (metal roofs)



Structurally secure design for load bearing conditions according to EN 1991-1

CONNECTING ELEMENTS/ACCESSORIES

Installation of the ALUTEC rails with pre-mounted retaining clips and slot nuts; vertical rails can be easily screwed in from the side

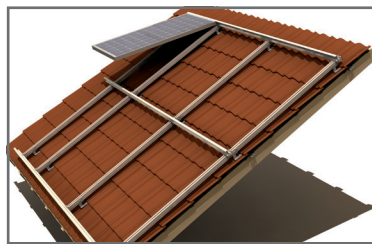
Attachment kits suitable for most tiled roofing, roofs with corrugated asbestos cement, as well as trapezoidal sheet, sandwich and standing seam roofs

Connector for extending the rails (standard rails length 6,000 mm), profile edge stops (right/left) and end caps (top/bottom)

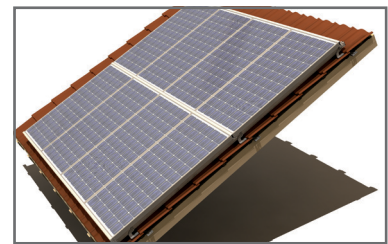
Small practical parts for horizontal and vertical cable routing, securing elements for extreme snow and wind



Mount ALUTEC on ALUVER



Insert modules



Done!



Stamp

110010