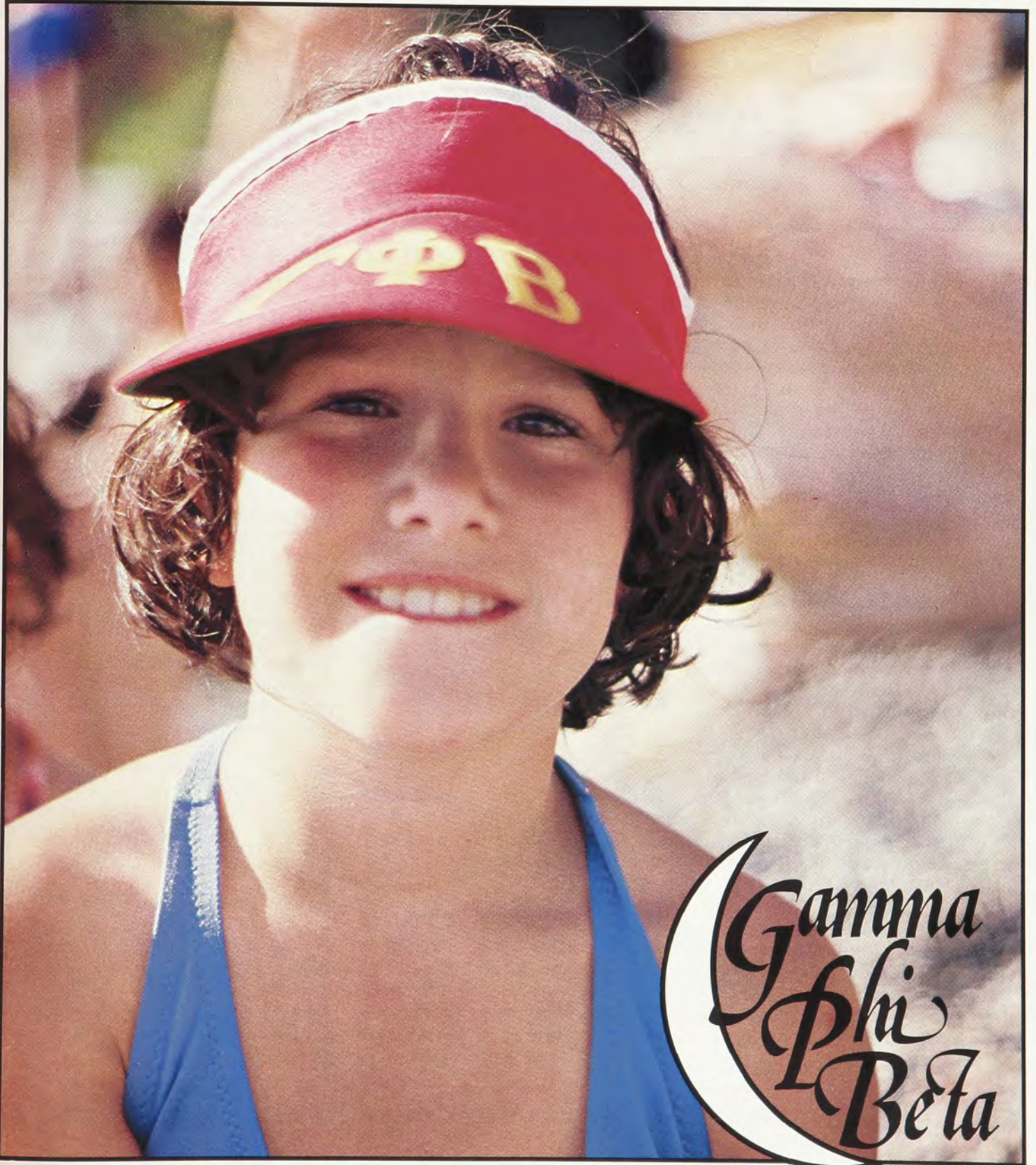


The Crescent

Winter
1986-87



ASUA President Campus involvement lands a top job for Erin McBryde

“Get involved,” is the advice Associated Students of the University of Arizona (ASUA) President Erin McBryde (Arizona) gives prospective college students. To Erin, extracurricular activities make the difference. “They make you a part of the campus community and give you a say in the events that affect your college life,” says Erin.

In a landslide election, University of Arizona students elected Erin, a senior political science/sociology honor student, the school's first female student body president in 13 years.

Erin's involvement on campus began her freshman year when she volunteered to help with school elections and became a senate aide for ASUA. As a sophomore, she continued her post as senate aide and became Speakers Board chairman and executive vice president of the Associated Pre-Law Students. She served also as Alpha Epsilon Chapter business manager.

Erin was a senate liaison for the Arizona Students Association, a statewide student lobby group, when she was a junior. The group has an impact on policy decisions affecting all university students in Arizona. Erin



*Erin McBryde
(Arizona)*

attributes her involvement with the Arizona Students Association and subsequent exposure to University of Arizona administrators, Arizona Board of Regents and state legislators as major factors in her decision to run for ASUA president.

“I liked the idea that my actions with these people could have a positive impact on the students at the U of A,” Erin says.

As president, Erin oversees a

budget of \$303,000, and is responsible for all ASUA activities. She is also the student spokesman to the Arizona Board of Regents, Arizona State Legislature, faculty and community.

“I owe student government a lot,” says Erin. “It has given me self-confidence and determination, and taught me how to accomplish the goals I set for myself. Most important is the knowledge that my involvement is benefiting other students.”

In addition to her student government accomplishments, Erin has been on the Dean's List and the Dean's 4.0 List, and is a member of Mortar Board. She has proven herself a valuable asset to Gamma Phi Beta, and was voted the outstanding member in both her sophomore and junior years.

“Gamma Phi means the world to me,” says Erin. “I could not have come this far without the help and encouragement of my sisters. They campaigned for me and supported me every step of the way.”

Erin, who was born and reared in Casa Grande, Ariz., plans to spend the summer in Washington, D.C. working as an intern in the office of an Arizona congressman. Her next major goal is to attend law school at Stanford or the University of Michigan.



Winter 1986-87

Opinion

Excellence!

Easy to say. Sometimes difficult to achieve.

Gamma Phi Beta expects excellence from every chapter, and encourages it through resources and guidance available from Gamma Phi Beta international officers. However, every chapter member must contribute commitment, desire and dedication to the group effort.

Gamma Phi Betas have a choice between excellence and mediocrity. Gamma Phi Beta's future depends on the choices we make.

Editor

Deadlines

Winter September 1
Spring December 1
Summer..... March 1
Fall June 1

Editors

Editor-in-Chief

Kris Brandt Riske
2405 W. Gregg Drive
Chandler, AZ 85224

Alumnae Editor

Margy Molden Wiltamuth
1700 Kiva Road
Silver Spring, MD 20904

Collegiate Editor

Lin Schafer Sanford
969 E. Leeward Lane
Tempe, AZ 85283

Feature Editor

Natalie Meyer McKenzie
531 S. Burton Place
Arlington Heights, IL 60005

Business Manager:

Marjory Mills Shupert
Central Office

CONTENTS

Katherine's Own 4

A new item in the gourmet snack food industry is a 76-year-old entrepreneur's delight.

Delta Chapter 6

Gamma Phi Beta returns to Boston University.

Grand Council 8

1986-88 Grand Council members promote Sorority excellence.

Gamma Phi Beta Foundation 12

The Foundation thanks 3,600 members and friends who contributed last year.

DEPARTMENTS

Officers	28	Collegians	38
Books	32	In Memoriam	42
Careers	34	Directory	43
Alumnae	36	Etcetera	44

ON THE COVER

A Gamma Phi Beta Camp Sechelt camper experiences the love and friendship of the Sorority.

Gamma Phi Beta USPS 137-620

THE Crescent is published quarterly in Fall, Winter, Spring and Summer by the Gamma Phi Beta Sorority, Inc., 7395 E. Orchard Rd., Ste. 200, Englewood, CO 80111-2292. Subscription price—\$1.50. Printed in the U.S.A. by Maury Boyd & Associates. Second class postage paid at Englewood, CO and additional mailing offices.

Postmaster: Please send notice of undeliverable copies on Form 3579 to Gamma Phi Beta, 7395 E. Orchard Rd., Ste. 200, Englewood, CO 80111.

Subscribers: send changes of address, notices of marriages and deaths to Gamma Phi Beta, 7395 E. Orchard Rd., Ste. 200, Englewood, CO 80111.

Katherine's Own

**A new item in the gourmet
snack food industry is an
entrepreneur's delight**

Katherine Hunter Prescott (Birmingham Southern) is a one-woman answer to what's new in the gourmet snack food industry. And the success story of this 76-year-old candy entrepreneur is astounding.

Little more than a year ago she was making burnt almond toffee in her Northfield, Ill. home, giving it to friends for Christmas and sending it in care packages to son John, press agent for traveling Broadway shows. Today she oversees a commercial operation that produces 350 to 400 pounds of toffee a week (a figure that climbs to 1,000 pounds at Christmas), basks in the limelight of being the recipient of the "new candy of the year" award, and dreams up new taste treats to appeal to the growing market of those who like snack food made with real ingredients and have the wherewithal to pay for the best.

"We specifically want to create handmade gourmet food," says John, who coined the phrase "high touch" as opposed to "high tech" for what Katherine produces. And high touch the toffee is, as it still re-

quires a lot of hands-on supervision and is handmade daily in 30-pound batches.

The Cinderella story for Katherine started when John took to heart the words of his "The King and I" associates that the candy in mom's care packages ought to be available commercially. To ensure a market did exist, the family took samples of Katherine's toffee to an "elegant farmers' market" in a nearby suburb and sold out every Saturday for weeks. They were convinced.

John, who remains her marketing, packaging, promotion and distribution expert, then took samples to fashionable gourmet shops in towns where "The King and I" was playing. "We don't have to do much except give people a taste. It sells itself," he says.

Next step was to find a commercial candy maker who could translate a 3-pound recipe into a 30-pound batch. It took 12 tries during two months to replace Katherine's aluminum pot and 48-year-old battered black cookie sheet with copper kettle and marble slab. "One doesn't just multiply a recipe's ingredients by 10," Katherine laughs.

When texture ("the bite is clean," i.e. crisp, declared one food editor) was perfected and flavor sufficiently "intense," Katherine's Own, under the umbrella label of Great Expectations Gourmet Foods, Ltd., was officially launched at the 1985 International Fancy Food and Confection Show just in time to win its best domestic candy award.

What makes the toffee unique are the ingredients and long, slow cooking. Katherine uses a dark Nestle chocolate, quality almonds and Georgia pecans, pure butter, and sugar. With a constant under/over stirring motion she makes sure sugar is melted before adding slivered almonds. Cooking continues until the mixture caramelizes and the almonds are toasted by the intense heat. Katherine knows the toffee is done (usually after about 45 minutes of cooking) when she sees a puff of smoke. After the candy has cooled slightly in its buttered metal pan, she pours on the melted chocolate and sprinkles it with chopped pecans which she embeds by rolling with the side of a glass. She lets the toffee cool overnight at room temperature (refrigerator moisture

could make the pecans soggy, she cautions) before breaking into pieces.

Katherine is proud her candy is sold at Nieman-Marcus, Macy's and Wanamakers, but she is just as happy her local beauty parlor and Hallmark shop carry it. In fact, this woman who never flew on an airplane until she was 70, is reveling in the acclaim and new friends her project has engendered. "I'm having the time of my life," the red-haired firecracker exclaims, charming all who come near her with her southern drawl.

The daughter of an Alabama clergyman, Katherine was one of three Gamma Phi Betas in the six-member Mortar Board at Birmingham Southern. She earned her master's degree in social work at Tulane and used it during the depression to run all health, children and family welfare programs in an Alabama county. After marriage to her husband, also named John, she combined the roles of mother, homemaker and editorial assistant for John's educational publishing company.

"John is my handyman," Katherine says lovingly of her husband. "He is my plumber and electrician. We take our stove (one step up from a hot plate) with us when we travel. I could cook it anywhere. I could even cook it on a candle," she says

confidently, referring to frequent demonstrations in any of the 500 stores in 50 states that sell the toffee. But the part she likes best is talking to people, she says of the 20,000 buyers and 4,000 exhibitors

being part of something that is growing beyond her wildest dreams.

"It's not kids' stuff; it's a sophisticated adult confection. It's for those self-disciplined people who indulge only in the very best," says John,

describing the toffee. Not that it started out that way. Katherine can't even remember where she got the recipe. "I think it was stuck in an old book." But that wouldn't matter anyway because she "has never followed a recipe without changing it." She cooks constantly, especially at night when she is bored with television. And from her kitchen we can anticipate two more gourmet items: Katherine's Own sweet toffee, coated in white chocolate, garnished with chopped almonds and packed in a festive red box. It is sweeter than the burnt almond toffee and has a heavenly aroma. Another venture will be "pita ditas," whose base is pita bread spread with butter and toasted until crisp with a variety of toppings: herbs from her garden, garlic, sesame or whatever inspires this creative cook.

And these are just the beginnings of Great Expectations,

where you may write for information on stores carrying Katherine's Own at P.O. Box 8293, Northfield, IL 60069.



who were at the San Francisco food show. "I never thought I was the talkative one in the family. That was up to the men." But she enjoys talking about her candy, seeing the delighted faces of those who try it, and

Delta Chapter

returns to
Boston University

The only thing missing was a peal of bells from Paul Revere's Old North Church to announce, "Delta Chapter is coming! Delta Chapter is coming!"

With open arms and excitement, Boston University and Gamma Phi Beta welcomed Delta Chapter to campus on February 15, 1986. The installation banquet, attended by 150 parents, friends and visiting members of Alpha Tau (McGill) and Delta Mu (Rutgers) Chapters, was the peak of a week of festivities for 24 Delta initiates.

Delta Chapter was first established at Boston University in 1887 and thrived until 1970 when the charter was returned because of a lack of interest in sororities. Only Pi Beta Phi remained on campus until, in 1984, Alpha Phi and Delta Delta Delta returned.

The next year two collegians became interested in adding another sorority. Says Kim Pedroni, Delta Chapter president, "Two of us were interested in starting up a sorority; suddenly it was four; then over 20. We were excited about Gamma Phi." After speaking with extension

directors from five sororities, a mutual selection between the collegians and Gamma Phi Beta took place. Delta Chapter was once again a colony.

Fall passed quickly and soon the pledges were involved in Inspiration Week. The celebration of love, labor, laughter, learning and loyalty brought the new sisters closer together.

The evening before initiation, a reception for visiting international officers was held at Boston University's historic Castle. Officers in attendance were Grand President



Delta Chapter charter members were initiated in 1887.



Ann Bronsing presents the original Delta Chapter charter.

Ann Mullen Bronsing (Indiana St.), Rituals Chairman Audrey Weldon Shafer (Missouri), Alumnae Vice President Phyllis Donaldson Choat (Nebraska), Province I Collegiate Director Becky Taube Beeler (Texas Tech) and Province I Alumnae Director Anne Layton (McGill).

February 15 proved to be an active day for the new Delta members. After initiation, held in a brownstone on Boston's famous Commonwealth Avenue, they made final preparations for the evening banquet at the Park Plaza Hotel.

In a room adorned with an ice sculpture of the Sorority's Greek letters, family, friends and members gathered to officially welcome Gamma Phi Beta to Boston University. The evening was filled with best wishes, words of welcome and gifts for the chapter. However, the highlight was the presentation of the original Delta Chapter charter.

Although the installation festivities seemed to be the completion of a long-awaited dream, they were only the beginning. Delta Chapter is growing into the future with 34 more women (quota) pledged last fall.—*Jill Matuszak (Kansas St.), Delta Chapter Alumna Advisor*



The first initiates of the rechartered Delta Chapter were initiated February 16, 1986.

This colonization partially funded by the



Sorority leaders *proud to be G Phi Bs*



Randy Guerra is a resident of Aurora, Colo., a Denver suburb.

International President Randall Stevens Guerra (Cal. St.-Long Beach)

Why are you involved in Gamma Phi Beta? It's fun. It's challenging. It's rewarding. It's exciting.

Describe your most meaningful Gamma Phi Beta experience. I was overwhelmed when former Grand President Ann Mullen Bronsing pinned the diamond badge on me at the 1986 Convention Pink Carnation Banquet.

Why are you proud to be a Gamma Phi Beta? It is one of the most progressive sororities and I'm proud to be a part of the forward thinking that makes it so. I'm also very proud of our collegians who work so hard to make their chapters the best they can be.

What are your goals? To promote excellence in all areas of Gamma Phi Beta, and to see the Sorority purchase a permanent headquarters.

Alumnae Vice President Sally Erikson Lewis (Bradley)

Why are you involved in Gamma Phi Beta? It is an opportunity to build friendships, share talents and skills, and grow personally through new experiences.

Describe your most meaningful Gamma Phi Beta experience. I was present at the 1984 Convention when my chapter of initiation won the award for overall excellence. The chapter's four-year effort (for

three of which I was Province Collegiate Director) was a perfect example of goal setting, team work and being the best you can be.

Why are you proud to be a Gamma Phi Beta? Gamma Phi Betas are outstanding women, and the Sorority offers them many programs such as TranSISter, SisterLink and leadership training.

What goal would you like alumnae chapters to set and meet? More alumnae participating and having more fun, and a 10 percent increase in dues-paying members by 1988.

Collegiate Vice President Jolene Lessard Stiver (N. Dakota St.)

Why are you involved in Gamma Phi Beta? Sorority ideals are an important part of my life and sharing them with collegians is a great joy. It is also how I repay Gamma Phi Beta for the skills I have learned and the friendships I have made.

Why are you proud to be a Gamma Phi Beta? Watching young women mature and take responsibility for something other than themselves makes me proud of what the Sorority has to offer.

What are your goals? To encourage all chapters to reach quota/total, develop practical leadership training programs, use programming to develop informed and well-rounded members and stress that skills learned through Sorority involvement will be a benefit in the future.

What goal would you like all collegiate chapters to set and meet? To strive for excellence in chapter operations and in members' personal lives and academic endeavors.

Financial Vice President Joyce Cole Hultgren (Wichita St.)

Why are you involved in Gamma Phi Beta? To share my time and expertise with the Sorority so others may benefit as I have and become more confident, responsible, informed and involved individuals.

Describe your most meaningful Gamma Phi Beta experience. It's not a single event but the collective memories, experiences and friendships resulting from 11 years work-



A member of the Chicago Alumnae Chapter, Sally Lewis is an executive secretary for Merrill Lynch.



Members of the Stiver family are Joey, Kurt, Kevin and Katie.

Grand Council



Tom and Marjy Shupert enjoy a summer day in Colorado.



Thanksgiving Day finds the Hultgrens—Myron, Laurie, Joyce and Tracy—at home in Wichita, Kan.



Tara, Gac, Mike and Karen Urette attend Gac's graduation from the University of Florida.

ing with the chapter at Wichita State. The collegians are a joy and keep one mentally young.

Why are you proud to be a Gamma Phi Beta? The friendship, love and support we give each other, and the talented members who share their skills with each other and Gamma Phi Beta make me proud to be a member.

What are your goals? I want Gamma Phi Beta and its members to strive to be the best, and to see improved communication between alumnae and collegians. Financially, the Sorority must continue to use its funds intelligently and operate within its budget.

NPC Delegate Karen Gamel Urette (Oklahoma)

Why are you involved in Gamma Phi Beta? I have found it to be the most rewarding volunteer work because Gamma Phi Betas are interesting, knowledgeable and professional women. Working with collegians is truly fun as their energy, enthusiasm and dedication is inspiring.

Describe your most meaningful Gamma Phi Beta experience. I surprised my daughter when I attended her initiation at the University of Oklahoma. She didn't know I was

there until I pinned on her badge.

Why are you proud to be a Gamma Phi Beta? No matter where I've been, Gamma Phi Betas have always been outstanding women with whom I'm proud to be associated.

What goal would you like chapters to set and meet? To establish realistic and measurable goals to increase our membership through outstanding individuals and chapters.

Executive Director Marjory Mills Shupert (Colorado St.)

Why are you involved in Gamma Phi Beta? Gamma Phi Beta was my whole life in college. Now I have the opportunity to help others do the

same, and to return what has been given me.

Why are you proud to be a Gamma Phi Beta? We have so many outstanding women who share their time, energy and talents to benefit the Sorority and make it the best it can be.

What are your goals? To continue to provide quality service to all members, chapters and officers, and to keep Central Office operating on a cost effective basis.

What goal would you like chapters to set and meet? To implement a public relations program to promote the Greek experience and Gamma Phi Beta.

Congratulations Alumnae Chapters!

Grand Council congratulates alumnae chapters which met or exceeded minimum objectives during the 1985-86 meeting year. The minimum objectives were adopted to help chapters assess their programming and identify strengths and weaknesses.

Albuquerque, N.M.
Amarillo, Tex.
Ames, Ia.
Atlanta, Ga.
Austin, Tex.
Bakersfield, Cal.
Balboa Harbor, Cal.
Bartlesville, Okla.
Bergen County, N.J.
Beverly Hills-Westwood, Cal.
Bloomington, Ind.
Bloomington-Normal, Ill.
Boise, Ida.
Buffalo, N.Y.
Castro Valley, Cal.
Cedar Rapids, Ia.
Champaign-Urbana, Ill.
Chicago, Ill.
Chicago NW Suburban, Ill.
Chico, Cal.
Cincinnati, Ohio
Cleveland, Ohio
Cleveland East, Ohio
Cleveland West, Ohio
Columbia, Mo.
Corpus Christi, Tex.
Corvallis, Ore.
Dallas, Tex.
Dayton, Ohio
Denver, Colo.

Des Moines, Ia.
Diablo Valley, Cal.
East Texas Area, Tex.
Eugene, Ore.
Evanston North Shore, Ill.
Evansville, Ind.
Flagstaff, Ariz.
Ft. Collins, Colo.
Glen Ellyn, Ill.
Glendale, Cal.
Greater Kansas City, Mo.
Greater Lansing, Mich.
Hartford County, Conn.
Hawaii
Houston, Tex.
Indianapolis, Ind.
Jackson, Mich.
Kearney, Neb.
La Jolla, Cal.
Lake County, Ill.
Lawrence, Kan.
Lincoln, Neb.
Long Beach, Cal.
Madison, Wis.
Manhattan, Kan.
Marin County, Cal.

Memphis, Tenn.
Mid-Michigan, Mich.
Midland, Tex.
Milwaukee, Wis.
Minneapolis-St. Paul, Minn.
Modesto, Cal.
Monterey County, Cal.
Montreal, Que.
Moscow, Ida.
Muskogee, Okla.
Napa-Sonoma County, Cal.
Nashville, Tenn.
New Jersey Metropolitan, N.J.
New York, N.Y.
Norman, Okla.
North Houston Area, Tex.
North Orange County, Cal.
Northern Virginia, Va.
Oklahoma City, Okla.
Omaha, Neb.
Palo Alto, Cal.
Pasadena, Cal.

Peninsula, Cal.
Philadelphia North, Penn.
Philadelphia West, Penn.
Pittsburgh, Penn.
Platteville, Wis.
Pleasanton, Cal.
Portland, Ore.
Princeton Area, N.J.
Quad Cities, Ia.-Ill.
Raleigh, N.C.
Riverside, Cal.
Rochester, Mich.
Rochester, N.Y.
Sacramento, Cal.
San Antonio, Tex.
San Fernando Valley, Cal.
San Jose, Cal.
Santa Barbara, Cal.
Santa Clara Valley, Cal.
Santa Cruz, Cal.
Santa Fe, N.M.
Seattle, Wash.
South Bay, Cal.
South Orange County, Cal.
South Peninsula, Cal.
Springfield, Ohio
St. Louis, Mo.
State College, Penn.
Stillwater, Okla.
Stockton, Cal.
Syracuse, N.Y.
Tampa Bay, Fla.
Terre Haute, Ind.
Toledo, Ohio
Topeka, Kan.
Tucson, Ariz.
Tulsa, Okla.
Vancouver, B.C.
Weatherford, Okla.
Wichita, Kan.

Minimum Objectives

1. Hold a minimum of four meetings each year.
2. Collect international taxes and submit to Central Office by December 1. Chapters formed prior to June 17, 1974 must have at least six members. Chapters formed after that date must have at least 12 members.
3. Pay the publications and forms fee upon receipt of statement from Central Office.
4. Elect officers and submit alumnae chapter officer list to Central Office by April 1.
5. Submit alumnae chapter president's report to Central Office by June 1.

Thank You!

Thanks to the generosity of 3,600 members and friends, the Gamma Phi Beta Foundation (a separate not-for-profit corporation established to implement the philanthropic objectives of the Sorority) received more than \$108,000 during the 1985-86 fiscal year. Fifteen scholarships, eight fellowships and seven grants-in-aid were awarded. Funding was provided for educational speakers for Convention and Leadership Training School, and the production of Personal and Chapter Enrichment (PACE) packets on eating disorders.

Donations enabled more than 100 Vancouver area special girls to enjoy two weeks at Sorority-owned Camp Sechelt under the guidance of volunteer Gamma Phi Beta counselors and staff. Supplemental funds for local camperships helped 27 alumnae chapters increase their local camping gifts.

"Even though we are embarking on an exciting capital fund drive to establish a permanent headquarters for our growing organization, we continue to need your generous annual gifts to the Foundation," says Foundation Chairman Ann Mullen Bronsing (Indiana St.). "We depend almost entirely on these contributions to finance its operations, an important asset of our sisterhood. Our goal is to continue to increase our support of financial aid programs for members and our unique international philanthropy, camping for special girls. However, the future of the Foundation depends entirely on regular giving by our members and friends."

The names of friends, members, and collegiate and alumnae chapters that contributed to the Foundation from October 1, 1985 to September 30, 1986 are listed on this and succeeding pages. All gifts are recorded and the various Circles reflect the level of cumulative giving since 1980. If your total amount of giving is inaccurate, contact the Gamma Phi Beta Foundation, 7395 E. Orchard Rd., Ste. 200, Englewood, CO 80111.

Alpha Syracuse

Founders Circle

Rozella P Heilman

Loyalty Circle

Jeanne Rice Clark

Lunar Circle

Helen Uhtenwoldt Baier
Jeanne Stauffer Beaudry
Kathleen Smith Heilig
Susan Kosloski Jaffe

Carnation Circle

Ursula Owen Belyea
Ann Vandemark Butler
Norma Barney Chace
Barbara Dudley Coffman
Barbara Nicholson Conklin
Jean Rennacker Cowin
Virginia Smith Curley
Marian Blumer Dyer
Grace Simpson Ellison
Nancy Eichorn Epstein
Dorothy J Frisbie
Patricia Covert Harris
Elizabeth Brown Hill
Barbara Hoyt Hills
Muriel McCormick Murphy
Melissa Marshall Nichols
Eileen Day O'Brien
Marion Osborn
Margaret English Quinn
Ruth King Richardson
Sharon Brown Sandle
Janet Harlow Schweisthal
Zoe Marshall Veasey
Nancy Lynn Wagner

Other Donors

Barbara Gere Ackley
Charlotte Muschlitz Arbogast
Ruth Buckman Armstrong
Margaret Erskine Atwood
Hermione Bartels
Trudy Vanhoen Baylis
Elizabeth Marot Bigelow
Nanci Fishman Brickman
Patricia Helen Burke
Elizabeth Ellis Carruthers
Janet Wolf Christopher
Judith Snyder Clark
Andrea Eileen Clune
Cynthia Townsend Colway
Clara Ham Cookingham
Alice Babcock Cooley
Janet Paxton Cummings
Margaret Peck Delprone
Maude Harnden Dunlap
Barbara Twyford Fagerstrom
Amy Trump Fink
Linda Zingerline Fitzgerald
Barbara Kenney Fortenbaugh
Kathleen Benson Goida
Janet Hill Gordon
Nancy Beth Harned
Jody Carona Harris
Beatrice Mueller Hess
Suzanne Fish Hiltlinger
Annette Stauffer Hocker
Constance Cassel Hughes
Mary Lyman Huntley
Dorothea L. Keeney
Helen Porter King
Joan Silcock King
Jill Lowe Little
Lizabeh Cambridge Martens
Carole Snider McDermott
Ellen Harris McMackin
Trauty Mohr Mercer
Janet Barlow Moore
Margot Doust Moore
Florence Wallace Patlyson
Marie Latterner Persse
Sally Posthill Rittgers
Barbara Missert Sassaman
Kathleen Reddick Scheimer
Ruth Sampson Schoeberlein
Patricia Whitney Schutt
Helen Anderson Seely
Sally Shaw Stevens
Honor Lennie Talmage
Shirley Beebe Terwilliger
Dorothy Jones Tolley
Carol Freiberger Vanlengen
Dorothy Barbour Walker
Christine Rennacker Watson
Mary Montgomery White
Marcia Luke Wierda
Dorothy McElwain Will

Beta Michigan

Founders Circle

Jacqueline Reid Allee

Loyalty Circle

Delphine Johnston Andrews
Louise Sprague Lake
Margaret Neatie Shelly
Dorothy Handley Welch

Lunar Circle

Carolyn Beltrami Caldwell
Marion Scott Goodrich
Elizabeth Hert Lincoln
Kathryn Lynch MacPherson
Charlotte Hamilton Mason
Janice Benson Shields

Carnation Circle

Sarah Query Andrews
Mary Meyer Bartholomew
Carol Savery Bradley
Frances Klein Carson
Katherine Chase
Marian Ovaite Cuff
Elizabeth Dusseau
Mary Wagner Gall
Laura Frances Gross
Virginia Allmand Haass
Carol May Hollingshead
Mary Davis Holt
Barbara Hewitt Kalif
Jane Eley Kimball
Marian Seitz Kolm
Gail Wiedemann Lamotte
Virginia Whitney McKee
Kathryn Alice Mewhort
Dorothea Ortmyer Novak
Orra Spencer Reid
Laura Joslyn Robertson
Emma Schmid
Mary Godfrey Sieger
Ruth Alderige Smithers
Jean Shaw Steiner
Susan Rowe Stoll
Terry Kuhn Treiber
Caroline Savage Wanstall
Joan Nash Watts

Other Donors

Janet Clark Aengst
Barbara M Barclay
Virginia Becker
Susan Beckett
Pauline Billey Boyar
Barbara Buschman Carlson
Mary Leita Christian
Mary Fay Elvidge
Martha Rennie Flynn
Elizabeth Morrison Gardner
Hilda Bowen Griffith
Mary Alice Smith Gulino
Jane Honey Harrelson
Marjorie McCulloch Harrison
Catherine Wetzel High
Doris Clark Hoffman
Shirley Farnsworth Horn
Carolyn Walker Jones
Nancy Joslin
Winifred Gridley Keller
Lou Ann Koval
Julie Ann Lavrack
Ms Robyn Linda Main
Catherine Baker Mayhew
Barbara Hoshal McLeod
Elizabeth V Miller
Evelyn Spamer Munson
Florence Harper Neidig
Margaret Ihling Nelson
Susan Huggard Parker
Sally Weidlein Parsons
Phyllis Bihn Potter
Margaret Zavela Raven
Deborah Ruvel Reicher
Janet Buckwalter Saxon
Edna Hyatt Schaub
Ellen Cooley Siegars
Jane Ann Slavens
Jane Nulty Sloan
Beth Dillman Slye
Nancy Beaman Tanke
Jean Jeffrey Tosdal
Jaqueline Oliver Utz
Esther Way
Dorothy Hartshorn Whitely
Mary Anne McCusker Wilson
Nancy Harkenhoff Winch
Ardis Wisner
Phoebe Power Wyland
Laurie Bowman Zolkowski

Gamma Wisconsin

Founders Circle

Aileen Hall Tredwell

Loyalty Circle

Jane Biggar Forkel
Alberita Richards Semrad

Lunar Circle

Barbara Waldo Brown
Ruth Piersen Cole
Virginia Stearns Fredrichs
Abigail Donohue Jensen
Louise Marston
Suanne Burns Taylor

Carnation Circle

Mary Josephson Adamson
Suzanne Wilmeth Anderson
Elise Bossort Bell
Mary Nicolaus Brown
Helen Henry Burtch
Barbara Nicoll Campbell
Linda Throop Castiglione
Joan Buchholz Clark
Marjory Etnyre
Dorothy Marshall Frawley
Gretchen Friday Gallagher
Helen Cady Griffith
Lucile Campbell Hoff
Andre Schlimgen Hohenfeldt
Jean O'Connor Kelley
Josephine Newman Krug
Charlotte Fisher Maurer
Nancy Spiegel Mitchell
Jane Pihringer Mueller
Lynne Clark Nordhoff
Eleanor Hulce Normington
Audrey Jones Petersen
Nancy Maloney Pope
Margaret Jones Ritchie
Teri Lidral Ruedig
Caroline Pomairville Sells
Florence Vellenga Spindler
Mary Gardner Sullivan
Marion Ehrlinger Swanson
Rebecca Jane Vail
Eloise Poock Wagner
Helen Nisbett Ward
Helen Dodd Winter
Grace Raymond Yocum
Juliana Bardes Zinn

Other Donors

Maxine Schultz Abbott
Marge McRae Adams
Mary Jo Banholzer
Harriet Trippe Benz
Renee Dehorn Bitoun
Judith Christiansen Boyd
Mary Schull Brown
Marion Briggs Brumder
Karen Nusbaum Buchfinck
Olga Lindfors Buenz
Kathleen Browning Bush
Betty Jane Cochran
Jacqueline Fontaine Conaway
Helen Meanwell Cooper
Mabelan Nesbit Correa
Kathryn Pagels Croak
Sara Terwilliger Cyr
Betty Hart Davis
Nancy Wilterding Davis
Marjoree Nee Deo
Marilyn Hebal Dietz
Katherine Bidingier Doherty
Mary Ethier
Maryalice McAssey Findorff
Edith Holmes Frelinger
Patsy Schultz Galstad
Eleanor Dana Garnock
Elizabeth Schott Gerend
Dorothy Bateman Guetzlaff
Sandra Brecke Heitz
Mary Curran Hilger
Patricia Dewitt Jacobson
Marian Knapp Jeffries
Mary Sedgwick Johnson
Katharine Holmes Johnson
Marcia Peterson Johnson
Pamela Moen Keehn
Pamela Jensen Kelly
Judith Mottl Kerr
Catherine Venus Kilpatrick
Susan Andrews Kindberg
Gloria Hubred Komppa
Mary Shepard Kosloske
Josephine E Kremers
Ann Carpenter Krug
Joyce Helms Kuehl



1986 Camp Sechelt Director Jayme Hooke teaches a camper the clap song.

Holly Grout Leggett
Nancy Treiber Lenz
Shirley West Lightcap
Natalie Lloyd-Jones
Paula Pratt Lussow
Beverly Sweet Mann
Ruth Winney Martin
Pamela Lynch McDonald
Marion Bremner McEveety
Eleanor Stearns McNary
Beth Miller McWey
Phoebe Amelia Miller
Patricia Neilson Moen
Marjorie Gallagher Murphy
Jean Krueger Neal
Julia Anne Nicholas
Lynne Dittman Pearcy
Ellen Schwandt Perry
Estelle Lindow Pfeifer
Joan Farwell Price
Mary Clarke Rector
Edith Gerry Schroeder
Eleanor Stoddard Seibold
Carol Geniesse Shamburek
Mary Tuteur Sherman
Tami Jo Shong
Sue Wemple Smith
Marion Nolting Smith
Charlotte Swanson Smollen
Anne Priedeman Southcott
Jane Mary Stiedemann
Marjorie Werner Stockwell
Mary Karsten Sutherland
Wendy Backes Swertfeger
Jean Gundlach Tress
Patricia Fredrick Turba
Karen Koski Udell
Ruth Lanz Vollrath
Constance Wolcott Walker
Margaret Rothermel Walker
Miriam Youmans Wellford
Jane Hicks West
Helen Harper Wilson
Ruth Lunde Winney
Marjorie Zinn

Delta Boston

Founders Circle
Dorothy Roberts Matheson

Carnation Circle

Ruth Whidden Graves
Ruth Bellatty Johnson

Anne Swadel Marvin
Pauline Sawyer Umland

Other Donors

Elizabeth Butler Allen
Carolyn Dutton Ashworth
Kathleen L. Bowser
Marie Keefe Brader
Jean Parcels Brock
Marta Lombardi Brown
Patricia Deal
Capt Julia J DiLorenzo
Alice Julia Dwinell
Miriam Graham Fisher
Elizabeth Hovey Gibb
Norma B Grant
Ruth A Hatch
Bonnie Blake Kam
Jane Miller Leavitt
Catherine Moulton
Catherine Barr Murphy
Wilma Cunningham Nichols
Beverly Olson Nichols
Polly Noonan Rutnik
Claire Fleming Shoulders
Virginia Symmes White
Ethel Norry Zimmerman

Epsilon Northwestern

Founders Circle
Doris Herman Pankow

Loyalty Circle

Joyce Farr Damm
Jeanne McGauran Douglas
Deborah Hayes
Dorothy Somers Hoehn
Barbara Rewey Miner
Helen Bergquist Person
Clementine Lewis Peterson

Lunar Circle

Mary Lecron Foster
Gwen Heilman Griffin
Verna Amling Hauser
Lois Moore Kircher
Catherine Vanduesen Law
Dorothy Engquist Mackwitz
Jean Ballantyne Ransom
Suzanne Maurer Thorne

Carnation Circle

Mary Ann Baiyor

Shirley Hallgren Brereton
Jocelyn Birch Burdick
Shirley Somers Calhoun
Marguerite Ray Carroll
Jean Doherty Countryman
Nancy Probst Crandall
Maria Keats Eggemeyer
Jacquelyn Powers Evans
Josephine Hall Graham
Grace Dodge Greaves
Frances Koblebard Harcus
Eleanor Garm Hemminger
Ruth Tibbles Hough
Greta Astrom Koerber
Josephine Macrae Linneman
Beatrice D Lumley
Dr Eleanor Merrifield Luse
Une Greene MacMillan
Frances McCarty
Frances Wamsley McColl
Virginia Godfrey Migely
Rosalie Gay Mortell
Charlane Whitlock Mowery
Ann Rittinger Petersen
Maryllyn Moeller Porter
Mildred Trick Sergeant
Margery Banning Shepherd
Anne Bayliss Simpson
Bernice Wickman Swann
Natalie Kamen Tate
Nellie Weston Ullrick
Helen Lenehen Vankirk
Marian Drew Waitley
Helen Behlke Wamboldt
Sue Sayer Wernecke
Beverly Williams Whitehead

Mildred Leritz Worthy

Other Donors

Jennifer Wong Achuck
Betty Elliott Alford
Ruth Allen
Elizabeth Schultz Andersen
Frances Appleby Andrews
Frances Williamson Applehans
Laurel Batka
Mary Flowers Batts
Carol Lindner Beaton
Isabel Clark Beeson
Carol Hoyerman Brockett
Jan Eaton Burress
Mary Schlecht Cameron
Esther Stoffel Carey
Susan Armstrong Cheney
Geraldine Benthley Clader
Eulalyn Wilson Clark
June Zettergren Cooke
Jeanne Barstow Corey
Patricia McKiel Cork
Patricia Malsbury Covington
Ruth Hannah Coyne
Adelaide Boyd Davis
Barbara Cline Day
Margaret Bracken Ehlers
Ms Adeline Fistedis Ellenberg
Mary Lemke Ely
M Sinnett Flynn
Margaret Black Foreman
Claire Wilson Frazer
Pamela Anne Gray
Eugenie Doran Greenman
Marianne Strell Gustafson
Suzanne Janet Hanney
Lucile Brewster Harder
Vivian McConnell Hardie
Virginia Smith Hartshorn
Helen Richardson Hawes
Deborah K Hill
Dorothy Roach Holston
Mary Fran Faulkner Jones
Mary Robinson Kalmus
Jeannette Popp Kent
Sue Sturla Kimbell
Lorraine Weikart Knickel

Rachel Sands Wiggin
Marilyn Streitmatter Woodman
Nelle Purcell Young

Zeta Goucher

Loyalty Circle

Carrabelle Waters Conway
Janet Feiker Delaney

Carnation Circle

Nancy Gale Callaghan
Margaret Harvey Gault
Marion Hardy White
Janice Maher Winterbottom

Other Donors

Margaret Wilstorf Carroll
Louise Owens Franciscus
Anne Sturmfels Iber
Helen Fanseen Langrall
Helen Dodson Prince
Dorothy S Pringle
Alice Barber Rawson
Eleanor Connor Ricards
Berniece Ryan
Ruth Baird Thompson
Harriet Tynes
Lura Ellen Warren

Eta California

Loyalty Circle

Charlotte Moore Angell

Lunar Circle

Virginia Porter Farquhar
Alice Martinelli Kett
Clareda Allen McCombs
Mary Kelly Norton
Anne Erkenbrecher Wright

Carnation Circle

Ann Norton Allen
Margarette Smith Bianco
Linda J Brooks
Margaret Voerik Chickering
Carol Ann Colwell
Janet Behr Croul
Mary Diepenbrock Draeger
Mae Leichter Edwards
Jean Kraemer Hagenstein
Doris Blennerhassett Hall
Edwina Ruth Hamm
Marion Weller MacDonald
Betsey Hoffman Metzger
Martha Singletary Mills
Marjorie Biggar Mills
Elinor Cheek Moskowitz
Carolyn Whiting Murman
Sally Gorriell Nichols
Morna Scott Nock
Frances Field Olmsted
Janice Slater Parker
Barbara Briggs Pratt
Loisene Breed Robinson
Loie Judkins Shires
Margaret Bell Sprague
Margaret Hall Todd
Nancy Holst Tyndall
Margaret Godley Zeff

Other Donors

Elizabeth Sheafe Ames
Patricia Quinn Anderson
Catherine Annette Auslen
Virginia Decamp Baker
Hilary A Baxter
Barbara Currier Bellamy
Olive Steitz Blanchard
Margaret Homer Coultas
Janet Chick Crum
Eleanor Voliman DiGiorgio
Marcia Gray Doty
Doreen Cook Dullea
Helen Otto Eichenlaub
Valma Maddox Evans
Jeanne Catton Ford
Jinx Reynaud Fores
Sharon Lynne Gerken
Elizabeth Hatfield Glover
Virginia Traynham Goodin
Martha Gearhart Gregory
Verda Larson Halbert
Elizabeth Fallows Hammond
Margaret Aylotte Hauserman
Barbara Jolly Hogan
Catherine Conlisk Holmes
Kathleen Hynes
Nancy Anne Keenan
Martha Pogue Kelly

Foundation Giving Levels

Founders Circle—gifts of \$1,000 or more
Loyalty Circle—gifts of \$500 to \$999
Lunar Circle—gifts of \$250 to \$499
Carnation Circle—gifts of \$100 to \$249

The levels are based on the Foundation's cumulative giving records since 1980. If these amounts do not coincide with your records, please notify the Foundation at Central Office to receive proper credit in the future.

Marie Donley Kuhl
Joan Lesage
Josephine Weston Lloyd
Ellen Mary Lynch
Ardis McBroom Marek
Shirley Warren Martin
Virginia Paisley Mason
Doris Gerrity McAuliffe
Joan Schock McLeese
Elizabeth Towne Melges
Nancy Furst Mitchell
Doris Cliff Morgan
Bernice Opizzi Ness
Jean Brooks Oliver
Laura McCarty Palmberg
Charlotte Crimmins Pandt
Virginia Park
Margo Warnholtz Perry
Marjorie Johnston Peterson
Elizabeth Peck Robertson
Ms Carol A Robinson
Anne Hinrichs Robinson
Mary Jane Morrow Roth
Marcia Stewart Royce
Helen B Schlieman
Stacey Lyn Shinkle
Sarah Louisa Stelle
Nancy Hoover Stevens
Katharine Crofts Storm
Ann Harris Straw
Vesper Getman Terrell
Marion Schifflin Vanzandt
Donna Merrill Vorce
Katherine Griffith Webster
Marianne Strachan Welander
Virginia Anderson Wells

Foundation

Sally Byrd Kerr
Catherine Payne Larimer
Lucy Covington MacSwain
Jacqueline Jamieson McAniff
Dorothy Dow Miller
Ms Margie Morris
Evelyn Curtner Morton
Carlota Young Mount
Mary Phillips Nash
Kathryn Millberry Newell
Kimberly Aikawa Olin
Shirley Higgins Palmer
Frances Purcell
Katherine Bloom Remaley
Patricia Parker Robinson
Annette Vollmann Ruhstaller
Heidi Moll Rungaldier
Karen Aumock Rusch
Jeanne Bettencourt Scott
Martha Locarnini Shine
Marjorie McKee Simenson
Helen Saylor Sizer
Margaret Allen Steacy
June Breschini Stewart
Frances Woodward Taylor
Janet Wallace Thiry
Aileen Young Traynham
Almeda Welch
Marjorie Colby Wening
Elizabeth Dempster Whitehead
Patricia Carey Williams
Harriett Plaisted Wilson

Theta Denver

Loyalty Circle

Mary Virginia Kennedy

Lunar Circle

Constance Whitney Davis
Jessie Carman Dennison
Eleanor Jane Patterson
Louise Stegner Steinbruner

Carnation Circle

Helen Henry Benedict
Mildred Biddick
Dana Bleakley
Katherine Ramsey Clifford
Maria Hurst Delaney
Genevieve Park Denious
Anita Brown Fenn
Ann Rouse Henderson
Patricia Perrin Mangis
Elizabeth Smedley Mathews
Elizabeth Mullare Messenger
Betty Rose Morris
Mrs Norma Warner Nichols
Margaret Fraser Tompkin
Gwendolyn Olinger Vanderbur
Calvina Morse Vaupel
Jean Ponsomby Wilson
Dorothy Cunningham Wood
Patty Teal Zemke

Other Donors

Lynette McKnight Anderson
Lillian Peters Beatty
Elizabeth Winchell Beckman
Ruamie Hill Binns
Lorraine Amman Bower
Elizabeth Baker Brunjes
Shirley Prey Cannon
Rita Jones Cassidy
Dr Rita DeLollis
Anne Brennecke Edwards
Virginia Hoots Evans
Virginia Gose Febinger
Barbara Lawson Fredrickson
Gail Applegate Fritz
Ann Morrison Gleason
Carolyn Delehanty Gower
Debra Byrnes Griffin
Helen Thompson Heath
Virginia Shannon Heckman
Juanita Dunlop Heckman
Nancy Sorrels Heggem
Dawn Dalin Heil
Helen Ringer Hughes
Verna Lackner Johnstone
Laura Winslow Kershaw
Betty Geiger Largay
Isabelle Birney Ludwig
Jean Omohundro McLaughlin
Mary Wooley Mechling
Hope Hanscom Mitchell
Maryjane Halter Raabe
Justine Sarkisian Rodriguez
Jean Macomber Romig
Nancy Schuetze Sampson
Vivienne Weaver Saunders
Otilie Stafford Seeber

Florence Galbraith Sproue
Joan Thompson
Dorothea MacDonald Wagers
Dorothea Wehrle
Rebecca Syverson Young

Kappa Minnesota

Lunar Circle

Ruth Butorac McDermott
Johanna Cooke Plaut
Mary Reinhart Slater

Carnation Circle

Gloria Gillespie Badgley
Norma Falz Brown
Jane Quale Cantu
Eleanor Evenson Ericson
Nancy L. Evans
Florence Pitman Hodgson
Elsa Bach Hutchinson
Marguerite Lagerman Kirkpatrick
Lora Vonkuster Sedgwick
Jane Buckles Sherer
Catharine O'Connor Terwilliger
Paula Johnson Wilke
Mary Mosher Winchell

Other Donors

Kristen Carlson Avery
Jeanne Burke Barker
Isabel Bladon Berens
Judith Alford Boss
Virginia Anderson Bragg
Jane Fellows Buffington
Elizabeth Clements Butler
Helen Titelmair Clark
Elizabeth Christofferson Diercks
Barbara Burnap Donoho
Jo Hellic Dunncliff
Mary Hancock Fitzgerald
Barbara Olson Gabbert
Leslie A Gardner
Milla Jacobson Garretson
Cindy Michel Grindy
Gail Taylor Hanson



Camp Sechell campers pause between activities.

Foundation Giving Levels

Founders Circle—gifts of \$1,000 or more
Loyalty Circle—gifts of \$500 to \$999
Lunar Circle—gifts of \$250 to \$499
Carnation Circle—gifts of \$100 to \$249

The levels are based on the Foundation's cumulative giving records since 1980. If these amounts do not coincide with your records, please notify the Foundation at Central Office to receive proper credit in the future.

Janet Boss Hearon
Elaine Isackson Hepp
Nancy Herman
Wanda Lillemoe Hoover
Caroline Cashman Huhndorf
Margaret Buckle Johnston
Mary McGregor Kerns
Audrey Solberg Lanpher
Virginia Tincher Lemon
Deanne Kay Cottrell Longren
Merrilee Mattson Lundquist
Catherine Maley
Cary Lou Nicholson Martinson
Betty Ann Blessie Massie
Jeanne Vandoren McDonald
Ruth S McLaren
Marjorie Sherman McMillan
Marjorie Sharpe Pursell
Susan Roberts Redpath
Elizabeth Martin Reed
Lauri Ann Uehlin Roberts
Jayne Rauen Sawyer
Eleanor Rogers Schaller
Genevieve Bezoier Shubert
Lisa Buscher Sieling
Margaret Sparling
Shirley Shumway Stephenson
Marian Kixmoller Stevenson
Kate B Walters
Helen Bezoier Webster

Jean Christianson Wigley
Pamela Peterson Young
Patricia Williams Zimmerman

Lambda Washington

Founders Circle

Susanne Fisher Hubbach
Jean Fisher McTavish

Loyalty Circle

Jean Foster Radford
Phyllis Graham Richmond

Lunar Circle

Mrs Mary Holert
Myrn Kinnear Philbrick
Helen VanLeuven Robertson
Gwendolyn Goodwin White
Eleanor Haggett Willey
Mabel Chesnut Woodruff

Carnation Circle

Jean Anderson Allard
Ava Pattee Allenberg
Sally Marion Anderson
Pearl Hartert Boyle
Carol Wakefield Campbell
Dorothy Stam Campbell
Kathleen Field Cornett
Annabell Brown Douglass
Barbara Harshberger Fletcher
Katherine Daman Garrett
Helen Poe Goodrich
Jean Morrison Grabenhorst
Mary Denney Jeffers

Susan Karen Johnson
Evelyn Canfield Kirk
Marilyn Marshall Lemman
Dorothy Troy Lingo
Genevieve Olwell Lynch
Marion Hansen Nelson
Carolyn Griffin Reid
Kathryn Jekin Scoggins
Evelyn Lewis Shirrell
Janet Hartman Skadan
Jean Summers Smith
Constance Johnson Strope
Kathryn Callow Wandel
Corinne Carpenter Yoder

Other Donors

Cynthia Keith Aman
Audrey Cannon Bashaw
Maureen McDonough Berg
Julie Hill Billett
Marylynn Bollinger Birney
Janet Sumner Borgen
Dean Lombard Brown
Jane Elizabeth Cummins Brown
Annabell Hall Brown
Christin Allen Carpenter
Alison Easter Clements
Betty Churchill Cochran
Debra Ann Rikalo Cotter
Annabelle Scruby Crandall
Mary McGovern Denney
Elizabeth Lobdell Ekstrom
Marjean Midkiff Fitzpatrick
Florence Walton Fletcher
Margaret Brewster Ford
Susan Hart Foster
Jane Cortelyou Galbraith
Gretchen Stryker Giacometti
Sandra Shaub Goelzer
Jeannie Baker Harrington
Phyllis Klinker Hawes
Shirley Skewis Hedden
Cynthia Walters Henderson
Victoria Xenos Hopkins
Annette Baker Huskinson
Vana Ingram
Dorothy Gerald Jaeger
Jean Ingraham Judge
Karla McIntyre Kauzlarich
Elizabeth Siemens Keeney
Jill Maureen Keeney
Carol Lanham Koehler
Jacqueline Levin Kotkins
Ann Janet Layne
Mrs Maralee B Leland
Ellen Brehm Lewis

Gwendolyn Newlove Malin
Kathleen Brady Matoian
Susan Birkenmeyer Maury
Beatrice Gould McClymont
Mary Corbett McFadden
Ann Hutchinson McKinstry
Patricia Riley McNeal
Barbara Steen Michels
Catherine Corcoran Molesta
Mary Lewis Nordquist
Gertrude Lamping Palmer
Marianne Harrison Rankin
Marian McGovern Regalia
George Thompson Reinhold
Chris Steig Richards
Virginia McNorthney Richner
Carolyn Cole Robertson
Norma Similia Rumberger
Mary Katherine Sackmann
Naida Marshall Sanders
Annette Byford Scaff
Kristine Olson Shanafelt
Billie Loomis Smith
Roberta Moore Sorensen
Judith Pederson Spragg
Jane Mavor Thompson
Mary Shultz Thornton
Karen Dawley Underwood
Margaret McNorthney Walker
Catherine Redpath Weller
Jean Osborne Wilhelm
Beatrice McIntosh Wilkinson
Betty Anderson Willits
Patricia Osborne Wright
Julianne Williams Zimmerman

Mu Stanford

Carnation Circle

Barbara Lyon Baxter
Edith Doughty Hindley
Juanita White Lemmon
Jane Spalding Levitt
Marion Roller McConnell
Dorothy Baker Moutat
Elizabeth Jones Netcher
Evelyn Carey Niebel
Geraldine Clift Renchard
Margaret Moore Watts

Other Donors

Jeanne Kesler Benn
Margaret Kempenich Boothe
Jane Rumbley Brookbank
Elizabeth Card Carpenter

Bette Brock Colm
Eloise McCleave Consideine
Beatrice Elkins Crady
Elizabeth Velle Cummings
June Reynolds Davidson
Margaret Lies Eginton
Dorothy Garnier Gantvoort
Mrs William Hall
Ruth Montgomery Hill
Waive Kingrey Leh
Joan Coffeen Mullinex
Dorothy Meyer Neill
Jean Austin Smith
Mary E Sprott
Mildred West Walker

Nu Oregon

Loyalty Circle

Florence Hartman Hollister
Rocena Sutton Lane

Lunar Circle

Wenona Dyer Martin
Mina Miner Smith

Carnation Circle

Betty Raymond Boycott
Bibbits Strong Brown
Janell Jones Conner
Barbara Essex Eckelman
Eleanor Forrest Hillar
Mary Linn Saeltzler King
Julia Ann Hart Lawson
Martha Harrold MacBride
Anne Halderman McGowan
Mignon Phipps Michele
Evelyn Dew Nye
Mary Anderson Page
Dorothy Heck Radditz
Joyce Herbert Syford

Other Donors

Patricia Maulding Aeder
Velma Farnham Allen
Lynda Trombetta Angell
Mary Dimple Armstrong
Lynn Maurine Babicky
Maxine Cady Barnes
Doris Padrick Blunt
Harriette Hofmann Buzan
Ruth Hillman Carter
Marion Marsters Chaney
Linda Kay Coats
Virginia Lynch Danielson
Suzanne D Davis
Kerry Beauлие Draper
Mary Marvin Drummond
Dorothy Harbaugh Eward
Carolyn Schott Gilbertson
Katherine Hayward Graham
Dale Leuenberger Gummer
Maxine Glover Hammond
Dorothy Dickey Harn
Heidi Lagergren Henderson
Martha Sanborn Jensen
Beth Marie Johnson
Velma Smith Johnson
Charlotte Preble Jones
Dorothy Paley Kelley
Jacklyn Creager King
Irene McLeod Kleen
Eleanor Sheeley McGlaughlin
Elizabeth Wright McKirdie
Kari Suzanne Minton
Trevia Torsen Owre
Virginia Wilson Petheram
Dorothy Crooks Schram
Laura Tallant Schroeder
Betty Bradbury Scott
Debbie Jacobson Shafer
Linda Kay Snelling MD
Kathleen F Somerville
Shirley Karsten Talkington
Mary Wright Thomas
Marjorie Biswell Watson
Barbara Leiter White
Jane A Wilson
Betty Thomas Winslow
Virginia Swart Zafiratos

Xi

Idaho

Founders Circle

Ralphine Ronald Staring

Carnation Circle

Nancy McIntosh Berry
Helen Bloom
Carol Bennett Chipman
Frances Tovey Ellsworth

Bette Senft Harris
Betty Hunter
Martha Rigby Kuhn
Betty Detweiler McGregor
Virginia Evans Miles
Ann Marie Molenaar
Rinda Young Olson
Ruth Ramstedt Peterson
Ann Kettenbach Savage
Sharrol Bartlett StMarie

Other Donors

Carol F Ashworth
Rochelle Blanton
Helen Patterson Brandt
Pearl Stalker Brown
Diana Kay Conrad
Kelline Green Cosh
Nancy Short Dabroi
Patricia Bailey Dittman
Eileen Gilbertson Evenden
Helen Stutz Gee
Charmion Childs Gordon
Paula Spence Gorman
Margaret Murphy Goss
Nancy Trever Guerriero
Veneta Holm Gustaveson
Lois Rawls Gwartney
Agnes Ramstedt Hawkins
Sally Nelson Hudelson
Mary Shurtz Jeppesen
Marjorie Bloom Jones
Pamela Taylor Leonard
Jeanne Parker McCarty
Jo Elam Payseur
Amy Leuck Petersen
Mary Brown Powell
Gloria Burgess Salladay
Marilyn Towne Sandifer
Dorothy Simpson
Marjorie Colquhoun Somers
Patricia Bartlett Taylor
Agnes Cox Telford
Betty Gordon Towles
Jo Betty Wickes
Gloria Garfield Zinn

Omicron Illinois

Founders Circle

Eleanor Cook Lewis

Loyalty Circle

Marjorie Green Barrett
Carlotta Hagen Bielfeldt
Ruth Rhoades Hay
Barbara Geiser Ilgen

Lunar Circle

Col M Evelyn Bane
Melba Miller Blauvelt
Evelyn Gooding Dippell
Margaret Ramsey Graham
Phyllis Armstrong Johnson
Mary Keith Miller
Joy Hunter Mohr
Lorraine Zeisler Schneider
Beatrice Sloan Simmons
Elizabeth Sinclair Teeter

Carnation Circle

Mary Spencer Bash
Wilma Bartle Berg
Margaret Merriam Blaylock
Dixie Nelson Borus
Jeanne Potter Bowman
Jeanne Harshbarger Brennemam
Edna Oakes Burt
Betty Gwinn Canmann
Andrea Cooney Cusick
Helen Elliott Davies
Margaret Vangerpen Dunn
Beverly Menz Figg
Jacqueline Inglesch Gibbs
Jean Bartle Hemphill
Nathalie Irwin Hise
Mabel Kirkpatrick Hohenboken
Emmabelle Clements Horning
Deborah Lee Julian
Clare Downey Malysiak
Donna Jordan Mamer
Phyllis Evans Moore
Ms Mildred Kaulfuss Mueller
Helen Campbell Musser
Janet Mosher Rasmussen
Charlotte Hepner Rosenstiel
Ada Rost Seales
Vernalee Burpo Sharp
Edna Smejkal Soper
Frances Inez Voris

Portrait of Jennie

Jennie K. Curtis (N. Arizona) attended her first Gamma Phi Beta Convention in 1974 as chapter delegate. She quickly became involved in international Gamma Phi Beta as a graduate counselor and Parliamentarian (a position she has again accepted).



But it is to the Gamma Phi Beta Foundation and the Sorority's camping philanthropy that Jennie has given most of her skills, enthusiasm and love. She served as counselor, waterfront director and director at Camp Sechelt, and shared her expertise as a member and chairman of the Camping Committee.

In 1982 Jennie was appointed Foundation Executive Vice

President (title later changed to Chairman). As a result of her perceptiveness and tenacity, the Foundation's administrative structure was reorganized. Also during her tenure, the Foundation Board of Trustees initiated innovative public relations and fund raising programs, revised bylaws and hosted the first Foundation Officers Conference for National Panhellenic Conference sororities.

Jennie's professional life also has been exciting and vital. She was assistant professor of outdoor studies at Colorado Mountain College and assistant to the director of Student Activities and Organizations at Eastern Kentucky University. Her present position is executive director of Girls Adventure Trails in Dallas. Jennie has an M.S. in guidance and counseling and a B.S. in recreational leadership.

So many lives have been touched in a positive manner by Jennie K. Curtis, and many more will be. Although she has retired as Foundation Chairman, Jennie will continue to give of herself to the international sorority, to individual sisters and to the community.

What a beautiful portrait!

Ann Mullen Bronsing
Foundation Chairman

Other Donors

Virginia Supple Atkins
Martha Voss Baits
Marilyn Jarvis Baker
Clara Elwell Ball
Joan Barker Basile
Mary Werts Beam
Mary Scovill Beamer
Phyllis Way Boardman
Jeannine Burnier Brix
Elizabeth Jean Buerckholtz
Beth Adelhelm Campbell
Vivian Johnson Cary
Martha McCammon Clark
Ann Roy Cole
Eleanor Schlecht Cox
Nancy Schreiber Dolan
Jeanne Ranger Downs
Nancy Jane Ellis
Evelyn Allard Ellis
Betty Roe Farrington

Mary Harrison Foutch
Minnie Black Fouts
Yvonne Gardner Fraley
Mildred Smith Frese
Maxine Kelley Gainey
Jolene Winsauer Gehlin
Leslie Anne Geissler
Elaine Sebastian Gompf
Joy McCollum Gray
Carol Osborn Grimm
Jeannine Gustavison Grossman
Katharine Callen Harbaugh
Virginia Harrison Harlow
Susan Slama Healy
Ronda M Hemphill
Sandra Snow Hillier
Genevieve Hays Husted
Marilynn Stephani Irwin
Helen Siefertman Kammiade
Patricia Kassel Kindt
Mary Ann Bucher Kreitzer
Maria Joan Ladle

Dorothy Blackhall Lenington
Alice Koehler Lindstrom
Nancy Bowen Longwith
Madolyn Fanning Machon
Heidi Zwierrlein McAndrew
Kristine Melby McCulloch
Mary Lindquist McDonough
Betty Woller Morningstar
Lois Fleming Norman
Ms Gwendolyn M Patterson
Anita Boyd Phalp
Kristine McConachie Quising
Susan Mary Range
Carolyn Land Robinson
Linda Vanleer Ross
Jeannine Rhine Schaub
Sarah Jane Smith
Sharon Tebben Sombeck
Alice Jacobsen Sprague
Barbara Angus Sprinkel
Mary Kay Starwalt

Foundation

Audley Nichols Swartz
Dorothy Potter Swindell
Kathleen Fleming Theis
Ann Ehrlicher Tunis
Marjorie Miller Wanderer
Jean Woller Wienecke
Kathleen O'Connor Williams

Pi

Nebraska

Lunar Circle

Henrietta Barnes
Phyllis Donaldson Choot
Margaret Neumann Dietz
Doris Carlson Kath

Grace Smith Jeffery
Besse Wythers Jeter
Jane Ann Kugler
Sandra Huber Larson
Dr Mary A Lierley
Mary Ellen McKee
Sandra Jean Milby
Laverle Herman Morehouse
Kathleen Boettner Murphy
Edna Rand Nelson
Ardis Fuhrman Nuss
Tami Osborne Pederson
Patricia Bechan Rosenquist
Roberta DeWitt Sawyer
Linda Muff Schreiner
Bonnie Altman Steiner
Joann Finney Stephenson

Patricia Smith Dieterich
Jo McVey Eggers
Mary Lee Fischbeck
Karen Sue Funk
Alberta Innes Gates
Elizabeth Sue Gaulke
Becky Schild Headley
Jeanne G Jacob
Gail Mulcahy Kay
Ruth McDermott Leadholm
Josephine Frush Lord
Louise Johnson Luedtke
Ruth Knight Lundquist
Jane Osborne Mathiasen
Peggy Tuttle McAndrews
Kimberly Steffen Merchant
Diane Artus Miller



The American Cancer Society Tennessee Division last year presented the Russell Burns, Jr. Camp Award to the Nashville Alumnae Chapter for its support of Camp Horizon for children with cancer. An art auction co-sponsored with the Williamson County Friends of Children's Hospital raised nearly \$2,000. The Foundation matched their efforts for a total campership donation of almost \$4,000. Rev. and Mrs. Russell Burns, Sr. present the award to Margie Letner Jones and Laura Register Reinbold (both Vanderbilt).

Carnation Circle

Eileen Hepperly Arpke
Kristie Lynn Baack
Barbara Dorothy Beninato
Betty Fosbury Bird
Linda Aden Buethe
Delta Rohn Carlson
Dorothy Kent Dorothy
Patricia Marie Dunn
Elizabeth Roessler Griffin
Mary Jean Lauvetz Hart
Sylvia Deen Kunemann
Gean Miller Lipson
Jean Metzger
Vera Stephenson Skinner
Nancy Lauber Slepicka
Jacqueline Illis Tooley
Julia Greene Tyrrell
Shirley Lentz Weddle

Other Donors

Sherry Crow Adams
Marla Tincher Battles
Neva Skinner Bernatz
Beverly Sorensen Bowen
Marian Paul Butcher
Anne Pickett Carstens
Jean Pittman Cederburg
Sharon Harmel Christofferson
Janice Hoyer Doane
Kimberly Younger Drvol
Geraldine Langelett Eicher
Gertrude Welch Evans
Linda Irving Felber
Ellen Frances Halmes
Marjorie Campbell Hartigan
Marilyn Moss Hatcher
Dorothy Smith Haynes
Kay Gleason Hays
Janice Marler Hesser
Grace Hall Hollenbeck
Diane Christensen Hough
Winifred Harding Irving
Janet Winter Jakeman
Lucille Ackerman James

Joan Wagoner Stofferson
Paula Little Thorson
Helene Byers Turnley
Mae Lanquist Vickers
Cheryl Holthaus Watson
Marlene Timmermann Wehrbein
Nancy White Welton
Karol Ann Whitefield
Nancy O'Connor Whitted
Bernice Lyons Wilson
Elsie Frampton Wilson

Rho Iowa

Founders Circle

Cherie McElhinney Olsen
Elaine Campbell Simpson

Lunar Circle

Elaine McCaddon Sellmer
Ruth Schunk Shelton
Emily Herman Thompson

Carnation Circle

Ilo Gifford Brown
Virginia Husman Cheney
Chloris Waterbury Colfflesh
Marian Hansen Gray
Margaret Farrish Hasse
Frances Glockler Hein
Jayne Tometch Hiller
Suzanne Chase Malloy
Barbara Balluff McDonnell
Doris Havercamp Nelson
Marion Norris Steele
Harriet Ludens Sutton

Other Donors

Carma Wagner Bailey
Alice Mason Berger
Ruth Frese Brock
Marcia Moore Buchele
Laura Moore Cook
Margaret Decker

Frances Beyer Moon
Barbara Beals Moulin
Margaret Leeper Nelson
Bettie Jayne Reed Olson
Gretchen Meier Oostenink
Alta Fessenden Pickford
Daintry Noelle Price
Betty Kelly Ruud
Marylou Warnholtz Slowey
Bette Lee Rhea Smith
Donna Dybbro Snyder
Mary Jane Soechtig
May Steffen
Mary Van Gerpen
Wendy Forrest Vaubel
Christine Anne Zinger

Amanda Wulf Fortenbaugh
Sara Fair Sleeper
Norma Sabin Wallingford

Carnation Circle

Lola Branit Atha
Katherine Altman Burch
Marjorie Walker Cowell
Martha Heywood Dressler
Pamela Elleman Epstein
Virginia Griffin Hickey
Mary Donovan Jones
Jean Stephenson Maynard
Toni Mogel Schulte
Mary Dannemiller Todd

Huberta Russell Dewey
Edith Senner Dickinson
Kimberly Dee Eilfeldt
Emily Stacey Evanow
Karlene Howell Ferguson
Lucile Jaquith Fisher
Rebecca Feldman Foster
Norda Zeck Grant
Susan Kay Harper
Ruth Swonger Henning
Patricia Elliott Huber
Helen Marie Hughes
Carol Smith Hughes
Virginia Staley Hutcherson
Florence Harnden Jacobs
Anabel Walter Joyce
Merle Fair Kahrs
Patricia Bailey King
Leota Wagner Klingberg
Rosemary Kinney Larrabee
Bette Brook Lathram
Theresa Barth Leinwetter
Marilyn Miller Leonard
Mary Belcher Lyon
Harriette Stewart McCaul
Marimae Voiland McDonald
Joan McGregor
Mary Tinkler Meeker
Marian Miller Meeker
Marilynn Konantz Miller
Julia Markham Piper
Marynell Dyatt Reece
Sarah Pickett Richardson
Grace Vaniman Russell
Belinda Borders Smiley
Mazzie Lane Steger
Lena Monroe Stranathan
Kay James Strausbaugh
Nancy Jackson Street
Vinita Bradshaw Sturgeon
Gladys Harries Swearingen
Hazel Jones Terrill
Jane Atwater Tinklepaugh
June Thompson Toland

Grants-in-aid

The Foundation offers grants-in-aid to members who, on a one-time basis, find their educations will be interrupted because of unforeseen financial reversals within their families. Two past recipients expressed what this special support meant to them.

"I want to express my extreme gratitude for the grant-in-aid gift you contributed to me. I am really excited to complete my final year at the university. Now, through your contribution, my chances of completing my undergraduate degree are better. Thanks for everything."

"I would like to thank you for the grant-in-aid of \$750. This contribution is greatly appreciated because now I am able to continue my education. It would have been hard to quit school because I really love Gamma Phi and the university. Thank you very much for all your concern, care and support. It will never be forgotten."

Grants-in-aid are yet another way the Foundation helps Gamma Phi Betas realize their potential and reach their educational goals.

Foundation Giving Levels

Founders Circle—gifts of \$1,000 or more

Loyalty Circle—gifts of \$500 to \$999

Lunar Circle—gifts of \$250 to \$499

Carnation Circle—gifts of \$100 to \$249

The levels are based on the Foundation's cumulative giving records since 1980. If these amounts do not coincide with your records, please notify the Foundation at Central Office to receive proper credit in the future.

Sigma Kansas

Founders Circle

V Thayer Dick

Lunar Circle

Virginia Strandberg Abbott
Mildred Odell Blum

Shirley Summers Townsend
Barbara Ossian Williamson

Other Donors

Sally Ramsey Beck
Shirley Hutchason Boersma
Kathryn Moore Coen
Wanda King Crossadell
Cindy Schuler Davidson
Pauline Laptad Deaver

Elizabeth Robinson Vandervelde
Sandra Gridley Wedel
Jacquelyn Miller Wertzberger
Betty McCollum Wilkin
Karen Anne Zupko

Tau
Colorado State

Founders Circle
Loretta Easley Mullin

Loyalty Circle
Anne Hofer Shepard
Marjory Mills Shupert

Carnation Circle
Florence Newlin Aspinwall
Debra Bridges Barnes
Mary Jones Bresnahan
Priscilla Riley Cook
Adele Taylor Cresswell
Roberta Ann Kirschbaum
Ruth McGrew Patrick
Bernadene Schunk
Jacqueline Vincent Summers
Donna Hahn Tomlin
Ruth Shaw Wagner
Maradith Ensor Wilkins

Other Donors
Leta Bradley Adams
Karon Heimbegner Bialock
Terri Lynn Waite Blatnik
Jane Bacheller Brillhart
Lora Weiss Carlile
Nancy Murphy Chauncey
Glenda Beach Condon
Elen Keen Crupper
Mary Ault Dutcher
Mildred East
Nancy Kunce Eloe
Frances James Fenn
Margie Hofen Grow
Mary Ann Habiger
Vivian Fletcher Hadley
Vera Dunton Hebert
Lisa Hanson Helfron
Deborah Shipley Holmes
Louise Hibbs Hudson
Jo Bole Jeffers
Diane Weddle Johnson
Shella Dorn Johnson
Bea Clarke Jones
Carol Meyer Kratky
Joyce Meyers Lafferty
Diane Saltgaver Lau
Gertrude Lauche
Marilyn Drumeller Long
Mary Service Martin
Ruth Stone McCreary
Ruth Thode Miller
Kathleen Woods Orton
Patricia Annette Poulson
Sharon Weiss Rittgers
Betty Hughes Robertson
Virginia Lane Schumacher
Shirley Isham Scott
Maxine Ossola Spencer
Marion Woodward Spitzer
Kim Anderson Steward
Bettyann Huskings Ungemach
Mrs Bertha B. Wear
Winifred French Williams
Naomi Vanhorn Williamson
Darline Durand Wilson

Upsilon
Hollins

Carnation Circle
Mary White Coppage

Other Donors
Suzanne Rutherford Hamilton

Phi
Washington-St. Louis

Founders Circle
Mary Tayman Ely

Loyalty Circle
Wilmot Snyder Lange
Josephine Michael

Lunar Circle
Gladys Hecker Myles

Carnation Circle
Joan Davis Brookshire
Sarah Kennedy Bruggeman
Mae Augusta Cella

Sylvia Kleinschmidt Fischer
Doris Talbot Hettlage
Marjorie Myles Ivey
Charlotte Briner Kamp
Erin Kathleen McGurk
Katherine Stephens Morrison
Elizabeth Sloan Phillips
Gloria West Pier
Carol Hohengarten Ramsey
Dr Sylvia Ann Steiling
Louise Brouster Young

Other Donors

Chi
Oregon State

Loyalty Circle
Glee Clark Heikes

Lunar Circle
Nancy Robinson Brenza

Carnation Circle
Margaret Miller Browne
Helen Anne Donovan
Laura Mason Doyle

Cynthia Louise Mecklem
Elizabeth Taft Merchant
Charlotte Latourette Miller
Virginia Lee Montag
Gretchen Ambuhl North
Jean Runtz Roth
Marjorie Clark Sheeran
Vicenta Soule Sparling
Carolyn Cramer Steward
Helen Diesner Towle
Erma Black Walsh
Julianne Patterson Ward

Psi
Oklahoma

Loyalty Circle
Gloria Swanson Nelson

Lunar Circle
Charlotte Hill Ballard
Bette Byrd Filip
Judy Elaine Graham
Margaret Shaw McDermott

Carnation Circle
Eleanor Erickson Brewster
Sharon Blake Bromberg
Sarah Livermore Carmack
Katherine Mockley Cosec
Doris Schobert Courtney
Georgia Reeves Crow
Harriet Tyree Eckley
Margaret Swift Fair
Nina Gay Flanagan Ferguson
Carol Boatright George
Marie Tackett Henderson
Martha White Keegan
Clarabeth Holt Kerner
Kathryn Harn Kish
Virginia Lippert
Tracie Tutt Mordy
Diana Becker Mundell
Marie Meeks Neudorff
Ann Drennan Paul
Elizabeth Johnson Reidy
Wylodean Cornelison Saxon
Ms Vicki Jane Stover
Eleanor Tracy
Marie Whitehead Turvey
Caroline Reigle Williams

Other Donors
Jane Steinhorst Anderson
Opal Ford Austin
Rhonda Fay Badeen
Natalie Almen Bonney
Mary Edwards Booth
Cheryl Berot Boutte
Helen Boggs Bradley
Dorothy Baird Braly
Mildred Brown
Marceal Harrison Brown
Elaine Scribano Brunoldi
Katherine D Cornelison
Muriel Walker Cornwall

Shirley Woodruff Crawford
Carol Cavaness Curry
Helen Hambleton Dolan
Rhonda Leigh Elliott
Anita Shaw Flint
Doris Hays Gilstrap
Gertrude Magee Grenko
Elizabeth Burford Gunn
Jennifer Partridge Hamerstadt
Betty Richie Hansen
Janet Werner Harris
Traci Belle Spring Harvey
Lydia Haterland Hawkins
Miss Empo Henry
Drewsilla Beams Hickman
Shirley Clarke Hoel
Mattie Lee Snooddy Hollar
Sally Williams Hyatt
Bari S Johnson
Ginger Allen Johnson
Linda Johnson
Virginia Louise Kearney
Frances Paris King
Paula McPherson Koy
Kathryn Latham
Mary Doyle Lawver
Nan Blake Leavell
Patricia Schrieber Mackey
Barbara Bradford Mayo
Diana Kay McDaniel
Margaret May Moore
Sydney Ronish Moran
Suzanne Brock Moyer
Patricia Davis Norton
Margaret West Pape
Susan Fisher Peterson
Margaret Browne Reese
Helen Hough Roach
Jill Johnson Roberson
Fay Rackley Robson
Shirley Jackson Rohde
Stella Grant Russell
Sally Tatum Scott
Anastasia Hart Shirley
Carol Lynn Stephenson
Jean Hopkins Stephenson
Hope Roach Strasner
Virginia Davis Thierfelder
Patricia Murrell Thompson
Martha Roach Thornbrough
Joan Neely Walters
Gene Carter Westbrook
Sherry Johnston White
Carrie Crumpler Wilson
Kathryn Bozarth Wise

Omega
Iowa State

Loyalty Circle
Catherine Guthrie Lindauer

Lunar Circle
Patricia Henderson Kingery
Elizabeth Lukerman Kroeger
Sara Hess McElhane

Foundation Trustees

Grand Council has appointed immediate past Grand President Ann Mullen Bronsing (Indiana St.), of St. Louis, as Chairman of the Foundation Trustees. Ann brings to the Foundation eight years of Grand Council experience and many years of dedicated service to the Sorority.

Other trustees are Camping Committee Chairman Judy E. Graham (Oklahoma), of Dallas; Financial Aid Committee Chairman Sally Ramseyer Beck (Kansas), of Greater Kansas City; Fundraising Committee Chairman Catherine Guthrie Lindauer (Iowa St.), of Denver; Finance and Investment Committee Chairman Barbara A. Endres (N. Dakota St.), of Denver; Public Relations Committee Chairman Mary Agnes Welsh (Memphis St.), of Chicago; Secretary-Treasurer Marjory Mills Shupert (Colorado St.), of Denver; and Grand Council Representative and International President Randall Stevens Guerra (Cal. St.-Long Beach), of Denver.

Jane Dooley Conzelman
Virginia Pease Cullen
Marion Hyman Duetting
Miriam Versen Falvey
Jill Ann Ferguson
Janet Eickmann Fligel
Ruth Wehmeyer Forsman
Teri Lee Gaby
Gail Beekman Haines
Phyllis Gaus Haskell
Helen Megel Holstein
Elizabeth Schall Hood
Gloria Grate Krimmel
Virginia Smith Lumppp
Irene Marten Meyer
Marguerite Vierheller Mueller
Frances Ross Oetting
Helen Cross Richardson
Joanne Scholes Rossnagel
Louise Berger Rost
Dorothy Schneider
Nancy Dawson Schneider
DOS Doris Jeanne Schuette
Anita Quenton Spinner
Quanita Stocker
Karin Stromberg
Jeanne Koch Swallow
Virginia Morsey Talley
Nancy Beth Teichman
Lois Bader Tuttle
Ingeborg Hartleb Vonhohle
Marjorie Hughes Weisenfels
Shirley Mueller West
Susan Schwartz Winter
Margaret Houghton Womer
Ann Callahan Zimmerman

Lucille Van Loan Eldridge
Diane M. Stalker Hood
Eleanor Fenton Langer
Mary Ann McDermott
Eleanor Martinson McInnis
Lucille Hollinshead Parrish
Michele Suzanne Penson
Esther Howard Smith
Caroline Armstrong Teaford
Deva Chisholm Vaught

Other Donors
Diana Demun Blankenship
Mariaine Rogers Brown
Glydas Henderson Cameron
Marjorie Prialux Christensen
Frances Ormandy Cotfield
Barbara Brown Coles
Linda Franz Crawford
Mary Ann Delaurenti
Shirley Stage Deutsch
Mary Ruef Eilers
Jane Slidd Fisher
Joan Wassenaar Forrest
Mildred Morrison French
Nancy Riches Gillitzer
Ruth Logan Gray
Kendall Hutchinson Hallford
Carol Carr Henderson
Mary Margaret Holthouse
Christine Lindauer Kilpatrick
Jo Boyer Kloos
Elsie Miller Lasher
Carol Young Lauritzen
Virginia McGreer Lubersky
Irma Hoehc Matthew
Georgiana Post McClenaghan

Quinn Bequest

A member of Gamma Phi Beta who is described as "instilled with the spirit of sisterhood" and "a very good sister" remembered the work of the Foundation with a generous bequest. In her will, Ernestine "Ernie" Chubb Quinn (Iowa St.), of Washington, D.C., gave an unrestricted \$50,000 gift to the Gamma Phi Beta Foundation.

Mrs. Quinn graduated in 1927 with a degree in home economics. She served as a home demonstration agent for the University of Maryland extension service in Frederick County, Md. Later, she was in charge of bakery services administration for Hot Shoppes in Washington, D.C.

Fellowship Awarded

Shari Meyer (Iowa) was awarded a Foundation Fellowship in July. She is studying at the University of Iowa for a masters in business administration with specialization in finance. Shari earned an undergraduate accounting degree and hopes to work for and ultimately become a partner in a public accounting firm.

She was chapter treasurer and Panhellenic representative, and a member of Beta Alpha Psi and Order of Omega.

Other 1986-87 fellowship and scholarship winners were announced in the fall 1986 issue of THE CRESCENT.



June Hughes Mouden
Janet Gaylord Newsome
June Wallace Schooley
Catherine Colman Spika
Ann Walby Steben
Ruth Hendrix Stouler

Carnation Circle

June Blake Bernick
Elizabeth Wilcox Bowker
Mary Ann Lindauer Callan
Kaye Johndreau Davis
Mildred Boyt Dawson
Susan Tai Gulliford
Mildred McBeath Harvey
Gertrude Cali Hirt
Alice Cooley Hult
Karen Wander Kline
Irma Paul Nash
Gwen Lankford Rogers
Cynthia Shirley Schultz
Marjorie Lyon Scott
Leita Twining Slayton
Evelyn Burchard Spencer
Susan Breckenfelder Thilo
Sylvia Hardy Trewin
Mildred Adams Weld
Marion Wilton Whitmore
Barbara Hershe Zimmerman

Other Donors

Lucile Draper Ahern
Alice Avery Applegate
Carolee Deruyter Balloun
Marjorie Mitchell Blair
Viola Edginton Bland
Michelle Wickersham Bliss
Mikell Mouw Bonnell
Madge Hill Bowers
Stella Edwards Brevoort
Virginia Nye Brockett
Elizabeth Davis Burchall
Dorothy Conquest Campbell
Nancy Cassidy
Elizabeth Jinkins Cooper
Margaret Maurice Denkhoff
Susan Hayes Drogemueller
Marylys Hushak Duprey
Marjorie Henningson Durham
Linda Hamilton Edsall
Betty Burke Farwell
Mary Round Feroe
Emily Jammer Fisher
Frances J Flick
Marion Billington Fuechsel
Helen Hill Grant
Judith Ryan Haaversen
Maxine Wood Hagemann
Bernice Umlandt Hahn

Mary Smith Hanger
Anna Sokol Heath
Helen Bruns Hebbeln
Winifred Haskell Heller
Vicki Hladky Hitzhusen
Florence Swenson Horn
Evelyn Bergstrom Hradsky
Jeanette Mary Johnson
Winifred McBeath Jones
Judy Jones Kearney
Marilyn Shaw Killper
Judy Anderson Krueger
Marjorie Knapp Kurfiss
Dr Christine Jensen Labin
Jeannette Gilliland Lanning
Carol Gardner Lee
Ila Hagie Logan
Helen Doss Maloney
Sandra Johnson Marsden
Caroline Woodruff Martens
Margery Welp McCarten
Bernice Kinney Mullen
Elizabeth Johnson Neal
Elizabeth Armstrong Olson
Dorothy Vaughan Park
Dorothy Cass Parker
Nancy Butler Pegrarn
E Webb Phelps
Ann Rozeboom Reckert
Rebecca Jean Richards
Lorraine Dehaan Ruby
Catherine Schanche Sanders
Gretchen Page Schiller
Mary Brugmann Schmidt
Vicki Walker Shaw
Marla Anne Shaw
Mynnette Lomas Sheller
Nancy Cole Spencer
Margaret A Stewart
Christine Lankford Toole
Electa Groszkruger Trapp
Arlouine Frees Vaala
Elizabeth Butler Vancisin
Virginia Schutter Voss
Agnes Breen Wahl
Jane Candor Walby
Edith Whitehead Walker
Vera Shirey Wanamaker
Marjery Molden Wiltamuth
Kathryn Soth Wisdom
Theresa Donohue Wolter
Martha Morgan Youngdale

Alpha Alpha Toronto

Carnation Circle

F Elizabeth Bertram
Marion Hunter Clawson

Ruth Orr Graydon
Mary Matthews Mackie
Jessie MacPherson Stuart
Muriel Thompson Wilson

Other Donors

Margaret Millard Birch
Barbara Wilson Broadbent
Rose Frame Davidson
Miriam Allison Graham
Kathleen Ellis Hopkins
Anna McAuslan Kennedy
Mary Carruthers Maxwell
Alice Millar McCall
Edith Hudson McClelland
Ann Mutrie McCullough
Marion Orr McLean
Emma Weir Muirhead
Harriet Muirhead
Judith Skene Rogelj
Joan Hewitt Sanderson
Eleanor Shaw
Edith Merrill Sheppard
Mary Thomas Singer
Bessie Harvie Spencer
Dorothy MacCallum West
Eleanor Corrius Wood

Alpha Beta North Dakota

Carnation Circle

Gienna Hagness Allen
Borghild Mork Balch
C Ulvedal Caldis
Bernice Rustad Cunningham
Barbara A Endres
Ceanne Leslie Evans
Lillian Lundquist Harris
Kathleen Joan Korgel
Patricia O'Connell Manning
Phyllis Traynor Walter
Louanna Lunseth White
Virginia Smith Whitson

Other Donors

Lillian Browell Carney
Louise Hagen Crowder
Adele Condie Ferguson
E Watt Happ
Dolores Ekren Hulsey
Jane Mann Lamb
Bernice Anderson Mc Mullen
Gladys Stannard
Deborah Fowler Swanson
Gayle Shemorry Williamson

Alpha Gamma Nevada

Lunar Circle

Helen Mahoney Prendiville
Marion Anderson Russell
Dawn Marie Tuffanelli

Carnation Circle

Margery McKnight Carr
Jacqueline Ennis Falkenroth
Ida Kellough Gildone
Beatrice Ott Hoge
Margaret Walts Ligon
Carolyn Mather Mahoney
Ethel Kent McNeely

Other Donors

Shirley Flagg Bortz
Betty Simpson Breed
Laverne Blundell Burch
Joan Drisdale Burger
Katherine Ross Capurro
Jean Nash Clemens
Eleanor Doan
Frances Smith English
Beverly Staples Foster
Dorothy Sewell Gallagher
Jean Giffin Glass
AltaBelle Germain Hanson
Maryemma Taylor Juve
Doris Kane
Jean Harris Kinkel
Bobetta Robertson Laca
Kim Meneley Lardizabal
Paula Gray Lyons
Edith Whitworth Metzger
Georgia Money Murphy
Mickey Kelly Murray
Virginia Dupes Nenzel
Salome Riley Ott
Lillian Sloan Pekrul
Linda Pearce Pinson
Carmen Rockstead Shelton
Stephanie Ann Siri
Robyn Forsyth Steele
Sylvia Crowell Stoddard
Patricia Freese Ward

Alpha Delta Missouri

Loyalty Circle

Audrey Weldon Shafer
Nancy Lupfer Stattler

Lunar Circle

Harriet Lishen Baldwin
Charlene McPheeters Greener
Mary McCune Hurd
Marjorie Maxwell Jones

Suzanne Sames

Carnation Circle

Louise Heinlein Bacchus
Shirley Lishen Bachman
Jane Bowen Bolte
Rochelle Reed Crawford
Betty Embrey Denny
Willia Davault Dickinson
Sue Dorsey Durrett
Catherine Kolb Evans
Deborah Kruse Flowers
Alice Vanhorne Huff
Dawn Heckman Johnson
Thelma Clevenger Lee
Adeline McBurney Lodge
Jane Espy Meyer
Dolores Pritchett Oldendorph
Marcia Lankford Plankinton
Laura Maxwell Riggs
Dorothy Friedrich Rose
Virginia Youngman Scholin
Barbara Lewis Thompson
Virginia Forsythe Vint
Jane McConkey Vogt
Audrey Allen Walsworth
Susan Wagenknecht Watters
Susan West
Cynthia Gates Wood

Other Donors

Elizabeth Ashmore Akard
Rozelle Meyers Alnutt
Marie Anderson Axline
Helen Tripp Ball
Margaret Eshelman Barbee
Joyce McKee Becklean
Carole Vollmer Bemke
Alison Shafer Bond
Lori Anne Sulack Bruens
Anne Langtry Button
Maureen Donovan Castle
Janet Atkinson Cordell
Melba Walker Cowles
Mary Catherine Cummiskey
Loreen Mohler Dorsey
Delores Costello Eskridge
Jennifer Marker Findlay
Andrea David Frimel
Patricia Lees Gatti
Cathy Lowenbaum Glaser
Dorothy Morgan Grimm
Betty Endres Hartwell
Cynthia Johnson Hoffmann
Susan Burnham Johnson
Virginia Bach Keck
Marietta Lenox Kint
Sally Adams Klausning
Mary Dorsey Krauss
Molly Jane McGrath
Susan Ezell Mitchell
Linda Francis Northrip

Ladyfood Scholarship

Thanks to the Dallas Alumnae Chapter, the Foundation has cooked up a new scholarship. The Ladyfood Scholarship was established with a \$10,000 endowment made possible with proceeds from the sale of the Ladyfood cookbook.

Published in 1979 after a year of work by members of the Dallas Alumnae Chapter, the 283-page book contains hundreds of recipes submitted by Gamma Phi Betas and tested by Dallas alumnae.

The first edition of the book endowed a scholarship for members of Alpha Xi Chapter at Southern Methodist University. The new scholarship was created with proceeds from the second printing.

Jan Kurowski Oberle
 Karen Bellinger Owen
 Mary Grund Peebles
 Emma Draper Phillips
 Sharilyn Spragg Sappington
 Marilyn Rooks Schaeffer
 Ruth Butler Stansberry
 Stephanie Jeanne Swallow
 Deidre Wigke-Tevis
 Barbara Craig Weakley
 Marilyn Prichard Weigand
 Phyllis Westerman
 Kathleen Kidd Whitaker
 Laura Williams Woloszyn

**Alpha Epsilon
 Arizona**

Loyalty Circle

Gladys Eite Taylor

Lunar Circle

Faye Gibbs Bagby
 Pauline Hickox Bayless
 Nancy Pearson Rodolph
 Marian Webb Schmidt

Carnation Circle

Mary Babbitt Bilby
 Lora Clayton Byerly
 Lucile Chambers
 Sara Lee Clayton
 Ellen Fuqua Dick
 Mary Lou Cumming Edwards
 Karen Miller Estes
 Ann Louise Finley
 Marian Schulzke Ford
 Edna Boyd Fraps
 Joanne Goelitz Haase
 Mary Jones Higley
 Mathilde French Hutchison
 Eileen Dwyer Jackson
 Peggy Annette McNeely
 Jean Holderness Miller
 Nancy Wilfert Nichols
 Verla Dare
 Olive Gallatin Picard
 Vesta Kihneffer Rawhauser
 Margaret Windsor Rogers
 Mary Lou Jordan Smith
 Louise Berner Tillotson
 Mara Vitolins Tyree
 Mary Alberthal Watkins
 Kathryn Johnston West

Other Donors

Emma Cole Allen
 Cornelia White Andre
 Lisa Hyman Bandler
 Karen Paulson Belt
 Mary Welch Berg
 Carolyn Foltz Brandon
 Sylvia Simpson Burton
 Martha Yount Caldwell
 Lucia Long Causey
 Nancy Kelly Church
 Catherine Crawford
 Rosemary Bolduc Davin
 Lori Urias Donald
 Suzanne M Dresser
 Gwendolyn Whitnell Egleston
 Ms Jackie Ellis
 Lynne Ingraham Evans
 Karen Kellogg Fain
 Tamera Elizabeth Flounroy
 Helen Rowton Fox
 Ruthann Kent Grace
 Martha Featherstone Graham
 Sarah R Simmons Ground
 Julie Thoeny Hackett
 Amanda McCoy Harries
 Evelyn Smith Henderson
 Milford Wilson Hollis
 Alice Ryan Holmes
 Allyson M Jones
 Elizabeth Brophy Kulemin
 Lois Linxwiler Martin
 Laine Harris McCarthy
 Judith Cowen McIntosh
 Lois Gates Mickle
 Diane Lippincott Mittlestaedt
 Sandra Rettke Nauman
 Caroline Erin Oates
 Mary Cloud Olden
 Debbie Cohen Oppenheim
 Aggie Poulos Pappas
 Elizabeth Sergeant Park
 Susan Dickey Paulsen
 Kathleen Ginnett Proctor
 Corinne Klages Reiber
 Pamela Jane Rich
 Virginia Robins Richmond
 Joan Blaney Rogers

Diane Tubbs Rousseau
 Imogene Richey Russell
 Beatrice Tetreau Schou
 Laura Kim Segal
 Diana Davies Smith
 Florence Cowan Snure
 Holly Laure Steinmann
 Sheryl Snoke Stewart
 Judith Rohrer Thielscher
 Rebecca Richter Thompson
 Martha McInroy Whiting
 Judith McCarthy Whittaker
 Stephanie Joan Wick
 Margaret Brumbaugh Wienold
 Marilee Miller Wilson
 Patricia Susan Woods

**Alpha Zeta
 Texas**

Lunar Circle

Mrs Glynn M Johnston
 Elizabeth Higgins Rilat
 Jessie Snead Vine
 Kathryn Madden Votaw

Carnation Circle

Cindy Gustafson Baker
 Janet Hale Callander
 Dorothy Shivers Clendenin
 Marion Wier DeFord
 Melissa Leonard Dillon
 Carolyn Simms Edgar
 Maureen Gagliano Faulkenberry
 Linda Ayers Gallatin
 Mary Elisabeth Blair Holbein
 Linda Buchanan MacIver
 Carolyn Burgess Matthews
 Aileen Burns McBride
 Patsy Thompson Rauch
 Dorothy Carlson Sandberg
 Dorothy Patterson Suttle
 Barbara Davis Terrell
 Frances Woolverton Tysor

Other Donors

Jean Anne Hall Booth
 Deborah Allen Box
 Dorothy Hudson Burr
 Nancy Ann Chuoke
 Rhoda Helen Copeland
 Catherine Clark Cumley
 Sylvia Winston Cutler
 Martha Chamness Darby
 Tanya Williams Deen
 Dr Susan Ellen Denson
 Jaime Teas Dilger
 Dorothy Ferrick Dunkle
 April Julia Ernst
 Josephine Forman
 Dorothy Moore Giroux
 Lynn Marie Gondesin
 Pearl Knape Goodwin
 Frances Rea Griffin
 Jean Wells Harding
 Julia Dunlap Head
 Jane Leach Holcomb
 Alice Stockdale Holmes
 Celeste Johnson Jackson
 Carolyn Shane Keating
 Marijo Williams King
 Laura Jo Moore Krol
 Joyce Shafer Lanuti
 Christine Campbell Lowry
 Barbara Schmitt Manning
 Mary Miller Maros
 Alvina Abrahams McKenna
 Beatrice Kubela Mebane
 Bessie Kilgore Merner
 Mary Chambers Pandres
 Marjorie Kitchens Riddell
 Mary Ann Shaw
 Linda Elise Sherrill
 Mary F Smith



1986 Camp Sechelt Staff: (1st row) Andrea Klein (Indiana St.), Susan Bartlett (Indiana St.), (2nd row) Lori Hen-son (Cal.-Berkeley), Waterfront Director Marget Hazen (N. Arizona), Director Jayme Hooke (Washington St.), Angela Temples (Oklahoma St.), Darla Miller (Cal.-Santa Barbara), (3rd row) Marci McCandless (Cal.-Santa Bar-bara) and Shelly Wright (Oklahoma St.).

Barbara Higley Staley
 Joan Orloff Steinhoff
 Myra Brennan Stone
 Claudia Lovett Taylor
 Dr Marie C Tisdale
 Portia Garrett Waddell
 Heather Gwen Wilson
 Michael Shelton Wright
 Nixie Ladner Zirjacks
 Donna Liana Ziana

**Alpha Eta
 Ohio Wesleyan**

Carnation Circle

Helene Skinner Berndt
 Clare Lehner Callender
 Barbara Termohlen Cooper
 Shirley Krumbholz Davis
 Betty Williams Duncan
 Marjorie Ann Frank
 Mary Olmsted Froschauer
 Betty Fouse Helpbringer
 Cynthia Baker McAdow
 Virginia Donner Moore
 Margaret McCammon Schlecht

Other Donors

Mary Fraser Andrews
 Martha Borden Campbell
 Marilyn Ashley Clyde
 Esther Mullen Conn
 Lavonne Dodway Ewell
 Mildred Carlson Glaser
 Carol Twining Grazda
 Anne Gross Hayes
 Margaret Southard Henrie

Judith Leland Herdeg
 Emilie Deweese Kanitz
 Barbara SchAAF Kortwich
 Jennifer Brown Lidecis
 Elizabeth Poulson Martello
 Cmdr Mary Lou McBride
 Beatrice Knapp McDowell
 Lois Bletscher Miller
 Jo Welch Myers
 Carolyn Callenbach Nelson
 Sue Helen Poulton
 Wanda Tyjeski Ronni
 Mildred Roush
 Susan Schneider
 Ellen Sell
 Mildred Grove Smart
 Ruth Thomson Staten
 Josephine Suttles

**Alpha Theta
 Vanderbilt**

Loyalty Circle

Carol Chilton

Lunar Circle

Catherine Gardner Bowling
 Lucille Corkran Nabors

Carnation Circle

Jean Campbell Acton
 Shirley Archibald Avakian
 Connie Lynne Brandon
 Anne Phillips Hartje
 Susan Douthit Hollinberger
 Marjory Letner Jones
 Kimberly Ann Mitchell
 Cynthia Hendrix Ravenna
 Judy Rary Reynolds
 Joanne Callis Roman

Other Donors

Lt Sherrie Raby Arning
 Teresa Smith Babcock
 Bege K Bowers
 Susan Hinkle Costello
 Lynn Renee Darsey
 C Hines Dickson
 Edith Moore Dugger
 Milbrey Rogers Dugger
 Wendy Kathleen Ebling
 Jeanne Cummings Edmonds
 Margaret Franklin Evans
 Peggy Malone Fehrman
 Doris Steelman Frakes
 Mary Regan Greene

Lee Notowitz Gryll
 Susan Elizabeth Guritz
 Brenda Thomas Harris
 Amy Jane Harwell
 Jane Stearns Hauenstein
 Alice Harrison Irwin
 Catherine Ives Jones
 Isabel Barbosa Kirtley
 Agnes Mongold Marchand
 Marcia Nelson McCartin
 Emily Garland Meyer
 Marion Blackman Mills
 Caroline Benz Neal
 Susan Nesbit
 Laurelle Taylor Newbill
 Rebecca Gay Olive
 Susan Bruton Ortenstone
 Paula Allphin Page
 Linda Dacus Parrish
 Nancy Higgs Pelster
 Darlyne McDonald Pieper
 Jeanne Hudnell Prince
 Debra Domino Pulley
 Nancy Schaffer
 Elizabeth Huth Schonrock
 Suzanne Drexel Sensing
 Norma Mousson Shaw
 Sandra Page Stahl
 Kathleen Jeanette Swan
 Margaret Proctor Tomins
 Jacquelyn White Ward
 Anita Timbrook Young
 Tavia McKeegney Young

**Alpha Iota
 UCLA**

Loyalty Circle

Suzanna Pierce Coxhead
 Elizabeth Chambers Huck
 Marjorie Morse Thomas

Lunar Circle

Elizabeth Richert Bowers
 Rachelann Thompson Daniel
 Betty Runals Henshaw
 Dorothy Cox Kelly
 Dorothy Setnan Radcliffe

Carnation Circle

Patricia Spencer Alford
 Elizabeth Trever Baker
 Trudy Lynch Barron
 Florence Cooper Blight
 Elizabeth C Blight
 Helen Douglas Brazil
 Linda Veach Buzzard
 Pamela Garside Coe
 Helen White Findlater
 Marty Walsh Gorry
 Elyse Ausmus Gruber
 Eleanor Chatfield Gulick
 Linda Prewett Heald
 Maurine Stenwedel Jennings
 Norma Patterson Kuhl
 Elizabeth Martin Lambrose
 Kathy Fessinger Levy
 Mary Caward Lindsay
 Mary Williams Lloyd
 Mary Keene Macinnes
 Ann Rieber Plauzoles
 Catherine Young Rieder
 Carol Arth Schwab
 Lia Hanson Wallich
 Frances Conrad Young

Other Donors

Jan Harbaugh Angus
 Suzanne Lynne Becker
 Norma Simpson Bufford
 Catherine Sernett Burton
 Mary Webster Butler
 Judith Bowscher Carmichael
 Nadine Larimer Cook
 Dorothy Packard Coon
 Stephanie Foster Coultts
 Bettye Quandt Cromwell
 Jacqueline Goulette Curti
 Willow Kiefer Decker
 Gloria Thatcher Dement
 Dorothy Tennant Drumm
 Carol Mallory Dysart
 Eunice Devoin Easley
 Elsie Ward Ernst
 Virginia Grondahl Everly
 Lori Anne Farber
 Ms Patricia Rosenwald Frazin
 Betty Warfel Hanslmair
 Ruth Krick Harris
 Mildred Ingvaldstad Haxton
 Dorothy Bodinus Houser
 Patricia Thoman Jennett
 Geraldine Mills Kimmell

Foundation Giving Levels

- Founders Circle—gifts of \$1,000 or more
- Loyalty Circle—gifts of \$500 to \$999
- Lunar Circle—gifts of \$250 to \$499
- Carnation Circle—gifts of \$100 to \$249

The levels are based on the Foundation's cumulative giving records since 1980. If these amounts do not coincide with your records, please notify the Foundation at Central Office to receive proper credit in the future.

Foundation

Helene Martin Knox
Nancy Allen Lindamood
Ruth Ann Younglove Loxley
Sonia Clarabot McCormick
Lt Karen Maureen McCrea
Melissa Griffin McFarland
Marjorie MacMillan McPhillamey
Elizabeth Benson Melvin
Patricia Winter Mendius
Donna Montague
Janet Orth Morris
Rebecca Ann Nathanson
Marilyn Perrin Parker
Jane Runk Parmelee
Natalia Priske Peery
Marcia Northbrook Rhoades
Susan Jacobsen Rose
Joan Knox Self
Brenda Stainfield Shea
Marilyn Swope Shirley
Jean Laursen Skillman
Ellen Joanne Cate Stokes
Helen Catlin Storrs
Laverne Anderson Strong
Sue Christensen Tilbury
Margaret Proctor Tyler
Ms Patrice Poffenroth Weis
Vicki Rothenberg Welch
Lucile Berry Whitehill

Alpha Kappa Manitoba

Frances Arnett Bowles
Susan Jane Glass
Frances Tisdale McFarland
Evelyn Dunfee McLean

Alpha Lambda British Columbia

Loyalty Circle
Laura Wilcox

Lunar Circle
Sheila Graham Ross

Carnation Circle
Glen McLennan Acheson
Joanne Finning Barker
Dorothy Menten Craig
Dorothy Macleod Forsyth
Margaret Beamer Howery
Mary Dolmage Inman
Lynn A Lafarge
Nona Christine Lambert
Helen Thompson Miller
Marion Cardwell Ricker
Carol Murray Schon
Frances Pratt Scrim
Katherine Hewitt Smith
Susan Craig Sutherland

Other Donors
Moira White Alexander
Isabella Arthur Beckett
Helen Carman Boulbee
Lorraine Thomson Campbell
Dorothy Moore Chutter
Joan Ritchie Creighton
Irene Marchese English
Dianne Yvonne Guinn
Helen Jones Heaney
Karin Calderwood Hilliard
Mary Newlands Isaacson
Ruth Ryan Oughtred
Susan Schaffer Peretz
Mildred Lynn Pollock
Elaine Kennedy Quinn
Zora McNab Smith
Nan Thomson Talling
Jean Witbeck Vick
Victoria Swencisky Walsh
Gertrude Smith Watney

Alpha Mu Rollins

Carnation Circle
Daryl Stamm Barker
Dorothea Bufalino Blakemore
Martha Newby Brewster
Ethel Middleton
Roberta Marling Morris

Other Donors
Eleanor Parker Moore
Florence McKay Nichol

Alpha Nu Wittenberg

Loyalty Circle
Harriet Fuelber Lowe

Lunar Circle
Margo Milloff Shields

Carnation Circle
Mary Bramkamp Gutermuth
Janet Gay Pierce
Mary Ann George Reitz
Rosemary A Sundberg

Other Donors
Ann Miranda Allif

Gwenyth E Anwyl
Jean Matsumoto Baird
Nancy Mulholland Bayer
Valerie Henneous Beall
Charlene Magovern Blakely
Darcy Ramage Boeckman
Jennifer Thomas Crain
Barbara Novotny Deagle
Barbara Heidi Dresse!
Nancy Reynolds Gwin
Frances Elizalde Haskins
Deborah Anne Miller Herbst

Nancy Marshall Herrman
Jennifer Lodge Hoffman
Jane Bayley Hollenbeck
Barbara Depenalzo Hunsaker
Joanne Jolly Hunt
Gwendolyn Myer Jacques
Virginia Williams Kenney
Harriet Storm Kurz
Holly Mathess Martiny
Ms Susan McGivray Rivet
Margaret Miller Schneider
Karen Dean Schnorrenberg

Jean Staron Slusser
Fern Buchholtz Smith
Mary Ellen Snyder
Abby Suzanne Vaile
Elizabeth Watson Vandivier
Tracy Elizabeth Wakefield
Jeanette Bauer Ward
Eda Weiskotten Wilcox
Nancy Walling Barker-Wilson
Susan Wall Wilson
Carol Winn Wolfe

Alpha Xi Southern Methodist

Loyalty Circle
Mary Jane Langham

Lunar Circle
Merle Stokes Edwards
Ann Shuler Ekas

Carnation Circle
Margaret Godbold Briscoe
Kathryn Leeper Davis
Leona Davis Drouet
Ann Fisher Gardner
Jacquelyn Hilger Graves
Mary Fisher Griffith
Shelie Chancellor Hussein
Margaret Elizabeth Newton
Mary Willis Patterson
Margaret Keagy Stemmler
Jill McPheron Wington

Other Donors
Marjorie Andrews Bell
Sharon McMeans Berish
Charlotte G Booth
Inez Gibson Campbell
Mary Dunn Carter
Marilyn Loomis Collier
Peggy Ruth Daniels
Louise Learned Draper
Gina Marie Elder
Kathryn Peurifoy Elwood
Melissa Johnson Eubanks
Sallie Roach Fawcett
Diane Lewis Fish
Betty Bell Frierson
Virginia Mullaney Gibbs
Jane Hall
Ethel Morrow Johnson
Lori Griffith Jones
Theresa Curtis Kantenberg
Luanne Alison Kelly
Lois Martin Kenner
Lynda Welch Lewis
Cheryl Dunn Luck
Louise Lawson Nichols
Marie Love Nickle
Kay Vierling Norris
Catherine Anne Pool
Catherine Seaborn Portman
Mary See Roach
D Deason Robison
Mary Graham Roddy
Ellen Ownby Rosson
Ruth Clapp Scott
Victoria Bychok Seitz
Katie Frank Slack
Helen Harris Thompson
Ciera Ann Cox Thornton
Beth McCallon Wheeler
Evelyn Courtney Wood
Dorothy Howell Wright

Alpha Omicron North Dakota State

Carnation Circle
Janet Abrahamson Doerner
Joyce Gunvaldsen Hilden
Mary Waistad Hoffmann
Barbara Heimeke Peppersack
Jolene Lessard Stiver

Other Donors
Marion Sand Askim
Joanne Plissey Bobb
Cecillie Henry Boyum
Katherine Kilbourne Burgum
Sylvia Stangler Culpepper
Beverley Woods Edwards
Luanne Dynes Engh
Kay Chapin Frangipani
Patricia Oram Gillespie
Roberta Diehl Hess
Joan Edlund Hjortland
Helen Lindquist Jenkins
Regina Garrity Martin
Erlis Mische Montgomery
Demarest Bowers Morrow

Camp Sechelt: a lifetime of memories

Are you looking for a challenging experience next summer in a beautiful part of North America? Are you a teacher, a physical education instructor or a student preparing for these fields? Do you remember the fun of going to camp or being a counselor? Do you ever wish for the opportunity to return to camp?

If you answered "yes" to any of these questions, you should consider spending several weeks at Gamma Phi Beta Camp Sechelt in British Columbia. Gamma Phi Betas run the camp, serving as camp director, waterfront director and counselors. The camp needs members to fill these positions to continue its operations. The application for Gamma Phi Beta camp staff positions is on page 24.

A letter from Andrea Klein (Indiana St.) expresses the benefits of sharing your summer with more than 100 special girls and other Gamma Phi Betas.

Dear '86 Camp Sechelt Staff,

I can't believe how quickly time is passing by. It seems like only yesterday we were all at camp. I will never forget the many great experiences we shared together.

Remember the weekend we had an encounter with a "killer mosquito" that could actually knock down a pup tent? It's a good thing we had a couple of brooms and a big bottle of calamine lotion handy!

What about the hikes we took up the mountain? If it hadn't been for the campers and their keen sense of direction, we would still be lost up there. Or maybe it was the dinner bell that helped us find our way back.

Oh, and don't forget when we decorated the gingerbread cookies. What a mess! I still don't know how so many bowls of icing could "accidentally" end up in our hair and on our

faces.

But, the greatest experience we shared was the campers. They showed us a whole new world through a new set of eyes. They taught us as we taught them. We shared a lot of laughter. We also shared a lot of tears when they had to go home. Each one is so very special and their little faces will always remain so clear in my mind.

We all worked hard and our rewards will never cease because we have so many wonderful memories that will last a lifetime. Camp Sechelt showed me more of what the bonds of Gamma Phi Beta are all about and I feel we are truly sisters. Thanks Jayme, Marget, Susan, Lori, Angela, Shelly, Marci, Darla and, of course, all the campers, for making my summer so special.

Love and much IIKE,
Andrea Klein
1986 Counselor

Nancy Ruliffson Nelson
 Gloria Reseland O'Brien
 Betty Jo Peltier
 Suzette Kay Peltier
 Janice Peltier Samuelson
 Lavaun Anderson Sears
 Mary Anstett Strangfeld
 Marjean Crites Watson
 Martha Blair Zimoski

**Alpha Pi
 West Virginia**

Carnation Circle
 Mary Cooke Humphreys
 Paulette Susan Justice
 Judith Dunmire Polak
 Margaret Ann Wildman
 Anne Moats Williams
 Barbara Messick Williamson

Other Donors
 Barbara Tucker Bucy
 Virginia Ahern Cline
 Linda Anderson Dehaemers
 Helen Williams Hughart
 Mary Moore Jones
 Sandra Kiser Rasmussen
 Dianne Marie Vagnozzi
 Gloria Tarasuk Vanzandt
 Teresa Ann Westfall
 Katherine Vaughan White
 Mary B Winters
 Stephanie Marie Wotrung

**Alpha Tau
 McGill**

Carnation Circle
 Muriel Johnson Crilly
 Wanda Douglas
 Anne Louise Layton
 Gwen Nicholson MacRae
 Sandra Gwendolyn Milton
 Lianne Potter

Other Donors
 Carol Parkinson Bailey
 Carolyn Chislett Cale
 Josee Coutu-James
 Sandra Schlachter Dumaresq
 Louise M M Lamontagne
 Joan Hogan Laney
 Judy Blood Milne
 Eleanor Blanchard Rooks
 Christina Elena Tanner
 Muriel Kay Watier
 Katharine Haverfield Wilson

**Alpha Upsilon
 Penn State**

Carnation Circle
 Marie Fahringer Cobb
 Marjorie Rude Cook
 Louella Bell Haarde
 Lorraine Thomas Keck
 Ariene Weaver Moore
 Millicent Beaver Paisley



Chores are a part of the camping experience.

Foundation Videotape

It's never been so easy to spread the word about the Gamma Phi Beta Foundation.

For only \$13, each chapter can now have its own videotape telling the Foundation story. The professional production outlines the goals and activities of the Foundation in simple, clear and concise language. It is ideal for PACE programs, Foundation Focus Month, rush, pledge meetings, alumnae gatherings and any forum appropriate for discussion of the Foundation's work.

Tapes may be purchased from Central Office.

**Alpha Rho
 Birmingham Southern**

Carnation Circle
 Charlotte Andress
 Ruth Huffman Beal

Other Donors
 Elise Berthon
 Mary Hawkins Cade
 Shirley Palmiter Jordan
 Loulie Norman Price
 Mattie Guthrie Sharp
 Mary Ann Braden Whisner
 Roselyn Stacey Wright

**Alpha Sigma
 Randolph Macon**

Lunar Circle
 Mariane Javana

Carnation Circle
 Martha Foster Madeley

Other Donors
 Pauline Grove Haliday
 Georgia Graves Ross
 Janet Stimson Sarr

Other Donors

Ferne Warner Aughenbaugh
 Ms Carolyn Graham Aull
 Harriett Dayton Bain
 Carolyn Jones Beachley
 Ruth Thomas Blackwood
 Nancy Smith Brown
 Dorothy Beachley Burkhardt
 Martha Barr Case
 Lynn Dailey Clancy
 Eloise Rockwell Engel
 Mary Stewart Fister
 Shirlee Procopio Franson
 Christine Caldwell Grabert
 Ms Mary Jo Hall
 Marion Stephens Heiss
 Vivian Doty Hench
 Raneer Durkee Hussey
 Linda Kemmerer
 Lois Limber Kok
 Nancy Delores Lauer
 Jane Weber Maris
 Marion McLaughlan McIntire
 Christina Rees Ross
 Elizabeth Ann Scarbrough
 Elsie Mason Shambach
 Gertrude Fetzer Skelly
 Theresa Marie Stroud
 Sheila Gallagher Sullivan
 Joyce Mack Tressler
 Mary Craft Wheat
 Beatrice Tucker Witmer

Viola VanNoy Zook

**Alpha Phi
 Colorado College**

Founders Circle
 Susan Schlessman Duncan

Loyalty Circle
 Mary Morrow Fuhrer
 Mary Jane Hipp Misthos

Lunar Circle
 Dianne Dyatt Hornbrook
 Eloise A Root
 Carol Stott St Jean

Carnation Circle
 Lorraine Ellis Anderson
 Sarah Bridgeman Blockhus
 Dorothy Printup Bryson
 Karen Jensen Carmody
 Jean Wilfong Fricks
 Merrilyn Bird Goodman
 Jessica Chalfant Gross
 Trina Jacobson
 Virginia Brown Smith
 Eleanor Severa Steen
 Donna Wolf Steigerwaldt
 Pattie Menefee Taylor
 Verla Parker Wendt

Other Donors

Cecile Haley Andersen
 Phyllis Thompson Anderson
 Evelyn Richter Baker
 Patricia Adams Black
 Sally Buckmaster
 Shirley Woltzen Cameron
 Virginia Rea Cerrillo
 Constance McQueen Clark
 Julianne Carlstrom Craig
 Mary Epler Crouch
 Wilhelmina Morrison Day
 Alice Rhoads Downs
 Marilyn Marksheffel Duque
 Marcella O'Connell Fields
 Mary Thomson Gilkes
 Lauren Evans Gipe
 Beverly Wellborn Hammer
 Tammie Caye Hand
 Marilyn Swan Heinly
 Patricia Hill Holm
 Lucy Bates Jolas
 Deborah Kay Jones
 Susan Morris Kelly
 Katherine Wohleb Krysty
 Loren Wright Laureti
 Jennifer Louise Lidke
 Marilyn Burnham McBride
 Mary Todd McLaird
 Adeline Zanotti Melton
 Winifred Vessey Metzler
 Pamela Haag Meyer
 Dr Maryanne Mowen
 Sandra Moffett Parks
 Turza Briscoe Pflug

Margaret Charlson Schisler
 Janet Clemens Schoepflin
 Carole Banbury Shulman
 Mary Emily Jones Tanner
 Jo Wicks Thomas
 Elizabeth Hanger Vanschooneveld
 Valerie Ann Vela
 Diane Lee Wieden
 Terry Hartel Woodrow
 Olive Landahl Young

**Alpha Chi
 William and Mary**

Founders Circle
 Edith McChesney Ker

Loyalty Circle
 Emerald Louise Erickson

Carnation Circle
 Jane Groggins Beard
 Aletta Muse Elliott
 Marjorie Briscoe Gentile
 Byrd Smith Heaton
 Carol Jones Hershey
 Elizabeth Thiele Martin
 Susan Butler Niblock
 Ruth Dumper Singer
 Helen Holbrook Tunstall

Other Donors

Sheryl Lou Althaus
 Marilyn Wynkoop Banes
 Catharine Tomlinson Bartlett
 Ann Singleton Beebe
 Gaye Overton Benson
 Ruth Proudman Biermann
 Elizabeth Bull Blohm
 Ann B Carlson
 Barbara Ann Croyle
 Karen Yanity Darch
 Marjorie Dearhart
 Martha Diane Dickens
 M Martin Doyle
 Suzan Gay Eaton
 Mary Ruddell Gauvreau
 Nancy Noot Goldberger

Kathleen Byers Hoffman
 Deborah Anne Jackson
 Amy Louise Jarmon
 Margita Licias Kay
 Marie Hellers MacMurray
 Genevieve Rile Morrison
 Gretchen Kimmell Price
 Lota Spence Reid
 Mary Wilcox Rietman
 Virginia Longino Sanders
 Margaret Elizabeth Schott
 Debra Leigh Slaughter
 Deborah Hower Smith
 Carol Forsythe Sperry
 Helen Grace Stapf
 Carrie Massenburg Stevenson
 Jeanne Winston Stolcis
 D Bitting Szabo
 Catherine Goewey Whitehead

**Alpha Psi
 Lake Forest**

Lunar Circle
 Betty McNabb Rich

Carnation Circle
 Sally Kint Cole
 Margaret Kay Dega
 Dorothy Ashton Vaught

Other Donors

Elizabeth Swenkerud Amacker
 Frances Yarnall Burris
 Margaret Juhrend Gressman
 Roberta Bodach Larson
 Marian Cole McElroy
 Roberta Cavagna Schultz
 Marron Herbst Sneed
 Barbara Huskey Souders
 Mary Yarnall Todd

**Alpha Omega
 Western Ontario**

Lunar Circle
 Joan Norma Boddy
 Barbara Dunfield Thornbrough

Foundation Giving Levels

- Founders Circle—gifts of \$1,000 or more
- Loyalty Circle—gifts of \$500 to \$999
- Lunar Circle—gifts of \$250 to \$499
- Carnation Circle—gifts of \$100 to \$249

The levels are based on the Foundation's cumulative giving records since 1980. If these amounts do not coincide with your records, please notify the Foundation at Central Office to receive proper credit in the future.

Carnation Circle

Marion Dickson Barkwell
Phyllis Musselman Neilson
Joan Ridpath Yule

Other Donors

Marion Morrow Bechtel
Margaret Chivers Brock
Jean Campbell
Jean Maynard Coultres
Margaret Bland Daniel
Glennie Green Dickout
Alice M Guntton
Beulah Ashton Hudson
Anne Hyatt Martyn
Helen Ingrid Perry
Suzanne Nancy Peterson
Mary Millen Ross
Sandra Shore Sands
Mary Louise Tasker
Mary J Wright

Beta Alpha U S C

Loyalty Circle

Nancy Kitay Galdi
L' Cena Brunskill Rice
Dorothy Rounsavell Tubbesing

Lunar Circle

Frances Mills Ciulla
Greta Scott Garner
Joyce Canavan Stewart
Dr Sharon Nugent Wallace

Carnation Circle

Miriam Rowell Awenius
Dorothy McKenna Bradshaw
Charlene Lamont Brumlieu
Sharon Klass Gaafar
Cinda Keating Lucas
Danelle Cole McArthur
Diane Richards Miller
Jneil Ludwick Nelson
Helen Morrissey Smith
Anita Rosalind Sokolsky
Jane Newcomb Whiting

Other Donors

Beverly Edgerton Adair
Marilyn Garton Amato
Kim Rudy Andrews
Marion Hohl Baugh
Elizabeth Byrd Bell
Mariana Mueller Cox
Margaret Martin Davies
Kathleen Duffy Davis
Paula Ann Bonadelle DeYoung
Irene Bergum Donoghue
Brenda Nicholson Eddy
Janene Verge Ferguson
Lisa Renee Harris
Patti Beckham Healy
Victoria Vail Holden
Joan Welty Ingle
Carol Linda Klein
Mary Webb Lae
Sharon Williams Lynch
Una Brunskill Markle
Carolyn Wellborn Martin
Carol Hamilton Maves
Cynthia Wiberg McRoskey
Maria Miller
Patricia Nassour Moller
Margaret Hirth Morrison
Lisa Ann Ogawa
Susan Broz Ogden
Jean Donaghu Pirtle
Jean Sturdevant Rance
Jananne Throop Rice
Phyllis Sharp Ryan
Rosemary Williams Seminoff
Teddi Tindall Shea
Holly May Siegel
Mary Doriand Sieling
Barbara Vivian Simms
Elizabeth Spencer Smith
Beverly Gould Stern
Katherine Gillilan Suter
Margaret Bivens Taves
Ruth Naslund Watts
Ellen Austin Weston
Jodi Lynn Williamson
Gretchen Young Wombie
Cynthia Andre Young
Cheryl Thomas Young
Harriet Forden Zachary
Charlene Gonzales Zettel

Doris B. Gorden Special Sister Grant

Suppose you are recently divorced and need to return to school to embark on a new career. Or you are a widow and need refresher courses to resume your profession. Or a family illness has depleted funds earmarked for a masters degree.

Although the Foundation may not come immediately to mind as the solution to such problems, it should. The Doris B. Gorden Special Sister Grant was created especially for such situations. It is reserved for members facing serious challenges and needing funds to return to school for refresher courses or a career change.

The "serious challenges" cover a broad spectrum of situations—physical handicap, illness or disability, widowed or divorced, and illness or disability of husband or children. Other situations may qualify.

Those who apply must be in good standing, having paid the alumnae tax for the current year, and must be financially needy. Applications (available from Central Office) may be submitted at any time and must be accompanied by two letters from individuals who can testify to need. It would be helpful if one letter were from a Gamma Phi Beta alumna.

Beta Beta Maryland

Lunar Circle

Shirley Sacks Du Teil

Carnation Circle

Martha Lyn Dippell
Shirley Serrin Landon
Ruth Blackwell Law
Mildred Burton Lawrence
Stanley Heim Speakman
Helen Hale Welton
Barbara Harding White

Other Donors

Linda Kerr Agreeen
Judith Caskey Bailey
Rose Esther Bixby
Cecelia Buckner Bouma
Marilyn Sacks Brown
Cynthia Louise Caswell
Ella Peables Davis
Dorothy Cockerille Engle
Jo McLelland Garey
Nancy Overton Gausshell
Duane Phillips Gawler
Janet Lingle Kyes
Linda Hartlove Loring
Mildred Sears Miller
Kathleen Marie Moran
Patricia Perrone Oberosler
Jeanne Lang Pierce
Marlene Shepel Powell
Eleanor Hoppe Reed
Hazel Burton Richards
Anne Bengel Slater

Doris Thompson Snider
Luann DeTar Sterling
Dorothy White Tessier
Betty Sullivan Tilley
Elizabeth Orr Titus
Mary Parlett Webster
Sharon Eisenhart Woods

Beta Gamma Bowling Green

Founders Circle

Doris Bird Gorden

Carnation Circle

Ann Clark Arnold
Barbara Boehm Betterman
Camille Antoinette Cestone
Cheryl Moon Grolle

Joann Smith Hayne
Rita Gamble Helfrich
Carole DeMore Morris
Patricia Lindberg Sheehan
Marilyn Richardson Tigges
Phyllis Brobst Winans

Other Donors

Sally Dickinson Andrews
Laura Mog Bagdasarian
Mary Craigmile Becks
Shirley Wehr Calvert
Cynthia Chapman Colvin
Lori Ann Cox
Anne Peterson Delcaizo
Patricia Harris Erickson
Darrene Hicken Ernst
Carol Jean Frederick
Margery Hopkins Fuller
Patricia R Gierosky
Betty Goodenough Glaeser
Lisa Ann Gravette
Marlene Adrick Gulas
Peggy Byerly Harmon
Kathleen H Hayes
Virginia Clayton Heckler
Virginia Kathrens
JoAnn Winter Lowther
Denise Lou Marsh
Mary Kesson Mellon
Elyce Joerling Paridon
Evalyn McClelland Preston
Martha Pryatel Ragonis
Marjorie Henry Roberto
Vicki Cotten Ryan
Dorothy Bishop Scott
Maureen Clark Sirney
Merridelle Depue Sowers
Patricia Ketchum Sparks
Phyllis Gierosky Stothard
Eilyn Bowen Thompson
Nicolene Vescovi
Virginia Cole Vescovi
Patricia Pivonka Wagar
Jennifer Lynne White
Nancy Steck Yackey

Beta Delta Michigan State

Lunar Circle

Dolores Fisher Busard
Helen Pass Swanson

Carnation Circle

Renee Scott Breslin
Mona Dorsey Cline
Barbara Galbrath Dean
Kathleen Ray Fordyce
Mary Giddings Hood
Janet Bartels Hummon
Susan Henning Kirkpatrick
Mary Burdick Thorne
Elizabeth Winston Turner

Other Donors

Shirley Taleen Bibbings
Andrea Renner Butler
Carolyn Celeste Byl
Olga Torsky Dean
Mary Doering
Shannon Drotar Fineout
Isabel Matilde Fleurquin
Karen Elizabeth Hahn
Carol Marie Hennessy
Mary Schierholz Hogan
Marjorie Heitman Hood
Patricia Pinch Jehle
Elaine Rice Johns
Judith Valrance Kohl
Carol Friedman Levy
Kimberly Demayer Meyers
Phyllis Hartung Palmer
Gertrude Jackson Palmer

Dorothy Eschwei Paluck
Kim Reap
Dona Desantis Reynolds
Sarah Bristol Villeneuve
Florence Kolata Wojan
Susan Hoban Workman
Diane E Zdunczyk

Beta Epsilon Miami

Lunar Circle

Jane Larson Long

Carnation Circle

Sandra Biegelman Burba
Susan Kinderman Lovell
Margaret Glover Mauter
Gretchen A Neu
Nancy Patricia Neumann
Elaine Pearson Tappan
Nancy McElroy Zolnowski

Other Donors

Marilyn Vincent Anderson
Margaret James Andrews
Susan Shafter Clifford
Bryanne Farmer Coletti
Katherine Woerner Coyle
M Beiriger Foster
Karen Zateslo Gray
Laurie Huffmire Jelinek
Kimberly Storm Kochert
Lois Wadzuk Konikowski
Elizabeth Anne Lewallen
Sally Clendenn Martin
Shirley Conner Mc Auliffe
Jeanne Miller McNutt
Mrs Christina Morrin-Mink
Elizabeth Novak Mitrione
Elizabeth Leecomple Moreton
Janice Durrant Nicholson
Vicki Schwartz Odioso
Alberta Wiggins Pettis
Ruth Shape Ray
Sheryl Sorenson Romer
Nancy Jeanne Sullivan
Jill Brinkerhoff Tuer

Beta Zeta Kent State

Carnation Circle

Dorothy Ann Nicholson
Rebecca Elbert Seroke
Shirley Woody Stacey
Mary Messer Tschantz

Other Donors

Mary Jane Averill Becherer
Linda Alexander Browning
Dr Harriet A Danielson
Betty Jean Kalish
Evelyn Foreman McNutt
Marcia Allen Schmitz
Elizabeth Hines Viering
Marjorie Reynolds Wilson

Beta Eta Bradley

Lunar Circle

Sally Erikson Lewis

Carnation Circle

Ann Caldwell Dearman
Elizabeth Asip Evans
Marilyn Park Hawthorne
Colette Cooley Hays
Norma Rodems Kottemann
Betsy Althoff Les
Marjorie Macklin Nell
Elizabeth Ann Printz
Wendy Whitaker Schultz
Wanda Siegried
Kaye Kline Swanson
Virginia Clough Young

Other Donors

Hilda Wilson Bourgeois
Sheila Kamler Dannells
Connie Welch Gillespie
Pamela Heeren Hennenfent
Jeanne Gamauf Laue
Elizabeth Spaulding Neufeld
Carolyn Harshbarger Orsi
Patricia Smith Remack
Corinne Plester Richman

Foundation Giving Levels

Founders Circle—gifts of \$1,000 or more

Loyalty Circle—gifts of \$500 to \$999

Lunar Circle—gifts of \$250 to \$499

Carnation Circle—gifts of \$100 to \$249

The levels are based on the Foundation's cumulative giving records since 1980. If these amounts do not coincide with your records, please notify the Foundation at Central Office to receive proper credit in the future.

Lynn Strasser

**Beta Theta
San Jose State**

Lunar Circle

Lois Kirchner Abbott
Valerie Vetch Caveglia

Carnation Circle

Patricia Temple Compton
Jeanne Arrants Davis
Jean Murphy Ferrini
Consuelo C Ford
Elizabeth Simpson Jung
Diane McCroskey Smith
Barbara Daseking Young

Other Donors

Reba Faye Augustine
Janet McCall Bawanan
Alice Kent Bergna
Juanita Kyle Brelle
Thelma Grothe Carter
Terry Webel Cassietto
Mary Youngren Collins
Trudi Brownton Diffendaffer
Ann Lawrence Emerson
Diane Jergens Hawes
Jacqueline Baker Holmes
Sue Ann Kapis
Susan Elizabeth Lane
Evelyn Holbrook Logan
Tomalene Borgman Lynch
Dorothy Joyce Lyman Mather
Eileen Bureau McDonald
Renee Harman Mitchell
Thais Mola O'Neil
Jacquelyn Hagarman Omsted
Gayle Marie Paride
Susan Steuerwald Reynolds
Joan Carlson Satrap
Marietta Zaro Singer
Dolores Freitas Spurgeon
Eleanor Gabler Wilson

**Beta Iota
Idaho State**

Carnation Circle

Mary Michele Pond
Susan Rountree Troyer

Other Donors

Lela Boyer Geisenberg
Peggy Ann Shufeldt Hess
Anna Maguire Janky
Gloria Pfundheller Mosser
Jana Kramer Rodgers
Suzanna Marie Tillotson
Kelli Jo Downend Troxler

**Beta Kappa
Arizona State**

Lunar Circle

Julie Ann Johnson
Sue McCreary Stockton

Carnation Circle

Cheryl Shaffer Blair
Marcia McConoughey Fisher

Other Donors

Carol Lynn Brooks
Marilyn Coor Burton
Darla Anne Click
Margaret Brown Ellis
Denise Stanisha Fuller
Amy Franks Gannon
Barbara Barr Grant
Linda Peterson Klein
Virginia Wiseman Krutt
Laura Sue Richmond
Mayre Glasson Rodwick
Kimberly Sherrell Rutherford
Glennys Paul Saba
Judy Harris Swensen
Sharon Furman Teitelbaum

**Beta Lambda
San Diego State**

Lunar Circle

Jo Ann Gail Dickie
Sally Stevens Jones
Mindy Hersh Weiss

Carnation Circle

Gayle C Christiansen
Kathleen Rall Matthiessen
Margaret Tumin McIntosh
Kathleen Houser Nolan

Florence Heinfelt O'Connor
Alexis Lagos Parkes
Nancy E Powell
Stephanie Sloggett
Catherine Schaffer Sweem
Merry Greig Wong

Other Donors

Mary Jo Allen
Joan Herzog Braitsch
Karen Mueller Brown
Sally Turnipseed Evatt
Kara Hill Fletcher
Joyce McSwan Franke
Rita Anna Gardin
Jami Allyson Gibbons
Claire Lewis Gietzen
Marcia Anderson Habecker
Marcy Louise Hanley
Donna Hanfin Harper
Lori Ann Chew Haynes
Carol Susan Heuman
Lynn White Hice
Bonnie Graham Knowlton
Linda McKinny
Kathryne Ann Meade
Frances Maloney Mehling
Marty Lynn Nelson
Wendy Garner Newhouse
Anne Pelonis Newlee
Angela Margaret Patrone
Barbara McCall Paul
Gilberta King Seatz
Susan Jean Shaler
Linda Spiro
Pamela Ruth Woodberry

**Beta Mu
Florida State**

Loyalty Circle

Joan Goddard Marks

Lunar Circle

Neta Ray Adams

Carnation Circle

Linda Scribner Coles
Adalou Huggins Horne
Deborah Pollock
Catherine Gulesian Shilen

Other Donors

Mary Burt Berryman
Dorothy Elizabeth M Cygan
Nina Reidy Duggar
Judith Meyers Edwards
Genevieve Elizabeth Everett
Tamberly Lynn Ford
Janet Holmes Fortson
Judith Ellen Hankins
Addie Spencer Hicks
Sandra Adsit Johnston
Michele Margaret Leblanc
Kathleen Boyd Marsh
Margaret Valero McPherson
Kim Moses
Annette Kilgore O'Brien
Diana Paez
Karen Skarda Rand
Katherine VanNorren Russell
Lorraine Day Summers
Sallie Roberts Talmon
Billie Edge Trocke
Elizabeth Bowman White

**Beta Nu
Vermont**

Carnation Circle

Sarah Bradley Presser
Ruth Andrea Seeler
Alayne Tomlinson Trombley

Other Donors

Barbara Hughes Campbell
Carol Anne Fischer
Muriel S Fonad
Elizabeth Evans Isham
Jill Rakoff Matusow
Mary Strobert Merrick
Barbara Massey Tieman
Margaret Fowler Veazey

**Beta Xi
Ohio State**

Lunar Circle

Susan Jane Bonnell
Martha Everett Bowman
Sally Mettee Keeler

Bandits raid 1986 Convention



With guns cocked, these Gamma Phi Betas raided the Dallas Convention.

Armed robbery can be an effective fund raising tool when it's all in fun.

A mean-looking gang of masked bandits invaded the Foundation dinner and "cleaned out" the audience of 500. Armed with capguns, the "desperadettes" told the audience no one would be hurt if they emptied their purses. When the "booty" was counted, some \$4,800 had been donated to the Foundation for grants-in-aid, scholarships and fellowships, and camping.

Another highlight of the dinner was a heartwarming presentation by Mike Tanner, a Baylor University sophomore who offered testimony about one of the Foundation philanthropies, Camp Esperanza. Located near Dallas, it provides a week of fun for children with cancer.

During a routine tonsillec-tomy when Mike was a high

school sophomore, doctors discovered one tonsil contained cancer and prescribed nine months of radiation and chemotherapy. Camp Esperanza was being developed about that time, and although he was too old to be a camper, Mike was invited to attend as a junior counselor. He served three years more as a counselor.

Mike told the audience about the camp and how much children love it. He said the best thing is that it is a "haven of normalcy" for children who spend much of their time going in and out of hospitals. "It's really wonderful to see them smile and watch their faces light up. It's quite a week."

Also attending the dinner was Dr. Peggy Sartin, Camp Esperanza medical director, who accepted a \$4,000 check from the Foundation in behalf of the camp.

Carnation Circle
Carole McKie Savan

Carol Braatz Wilson

Other Donors
Maria DeMaggio Cioffi

TYPE OR USE BLACK INK



APPLICATION FOR GAMMA PHI BETA CAMP STAFF
OPEN TO ALUMNAE OR COLLEGIATE MEMBERS

DUE BY APRIL 1
(Applications accepted after this date until staff is complete)

Applying for: Counselor _____ Waterfront Director _____ Director _____

NAME: _____ CHAPTER: _____
last first middle

BIRTHDATE: ____/____/____ GRAD. YR.: _____ SOC. SEC. #: _____

COLLEGE ADDRESS: _____ PHONE: () _____
street city state/prov. zip code

Dates that you can be reached at the above address: From ____/____/____ to ____/____/____

HOME ADDRESS: _____ Phone: () _____
street city state/prov. zip code

Height: _____ Weight: _____ College Major: _____

Graduate degrees and majors: _____

Do you have: Advanced lifesaving: ____/____/____
expiration date
American Red Cross First Aid: ____/____/____
expiration date

WSI: ____/____/____
expiration date
CPR: ____/____/____
expiration date

Do you play a musical instrument: _____ If so, what: _____

Check areas in which you have (1) interest, (2) experience, (3) teaching ability:

(1)	(2)	(3)		(1)	(2)	(3)	
_____	_____	_____	Outdoor Cooking	_____	_____	_____	Marine Life
_____	_____	_____	Camp Craft	_____	_____	_____	Dramatics
_____	_____	_____	Nature Study	_____	_____	_____	Folk Dancing
_____	_____	_____	Hiking	_____	_____	_____	Song Leading
_____	_____	_____	Arts & Crafts	_____	_____	_____	Puppetry
_____	_____	_____	Swimming	_____	_____	_____	Outdoor Games
_____	_____	_____	Other (Specify): _____	_____	_____	_____	

On separate pieces of paper (please type) answer or list:

- I. Four references, their addresses and telephone numbers (include area code)—**FORMER EMPLOYERS PREFERRED**; if you are a collegian, one must be the chapter alumna advisor or member of chapter advisory committee. Do not list relatives or collegians.
- II. List any special diets, health conditions, or physical conditions you have which would limit your activities.
- III. Resume: list pertinent job or volunteer experience with dates served.
- IV. Describe your experience with 8-13 year old children.
- V. Course work or training which would be helpful as a counselor.

The following approval is required for an undergraduate member:

Signature of chapter president: _____

* * * * *

I understand that if I am accepted, I will be required to submit a certificate of satisfactory physical examination and a TB-free verification.

The information on this application is true and accurate to the best of my knowledge.

SIGNATURE OF APPLICANT

DATE

Local Camperships

During 1986, the Gamma Phi Beta Foundation provided more than \$9,000 to supplement \$8,800 raised by alumnae chapters for nearly 150 local camperships. At Gamma Phi Beta Camp Sechelt in British Columbia, 108 special girls experienced camping. These special youngsters in the United States and Canada benefited from friendship, swimming, hiking and other camp activities for 2,350 days because of the generous contributions of Gamma Phi Betas. Alumnae chapters and the camping programs they funded are listed below.

- Albuquerque, N.M.—Muscular Dystrophy Association of America
- Ames, Ia.—Camp Fire
- Aurora, Ill.—Fox Valley Girl Scout Council
- Cedar Rapids, Ia.—Camp Courageous of Iowa, Iowa Council of Camp Fire
- Cleveland East, Ohio—Broadmoor School
- Cleveland West, Ohio—Camp Cheerful
- Corpus Christi, Tex.—Camp Fire Girls
- Dallas, Tex.—Camp Esperanza
- Dayton, Ohio—United Cerebral Palsy
- Denver, Colo.—Camp Fire Council, Denver Girls's, Inc., Mile High Girl Scouts
- Eugene, Ore.—Camp Fire
- Evansville, Ind.—Raintree Girl Scout Council
- Jackson, Mich.—Irish Hills Girl Scout Council
- Minneapolis-St. Paul, Minn.—Courage Center Camps
- Modesto, Cal.—Christian Berets
- Monterey County, Cal.—Monterey Parks and Recreation Department, Salinas YMCA Summer Camps
- Montreal, Que.—Amy Molson Camp, Inc.
- N. Virginia, Va.—Northern Virginia Training Center
- Omaha, Neb.—Spina Bifida Association of Nebraska
- Palo Alto, Cal.—Camp Harmon/Easter Seal Society
- Philadelphia North, Penn.—Camp Firefly
- Philadelphia West, Penn.—Camp Sunshine
- Princeton Area, N.J.—Camp Meta/Trenton YMCA
- Quad Cities, Ia. and Ill.—Davenport Y, Camp Abe Lincoln
- Raleigh N.C.—Pines of Carolina Girl Scout Council
- Tampa Bay Area, Fla.—The Children's Home, Inc.
- Toledo, Ohio—Toledo Society for the Handicapped

Ellen Buchhagen Cummings
Joyce Gallogly Eiting
Janet Campbell Mahan
Carolyn Sanford Vetter

Beta Omicron Oklahoma City

Lunar Circle
Merilyn Milby Gandy

Carnation Circle
Adra Mason Cheek
Alta Patricia Denton
Maytha Wagner Mead
Clarice Braker Morrison
Kathryn Jones Precure

Other Donors
Lisa Hills Benson
Linda Constantine Buettner
Lavonne Mayhugh Clinton
Wanda Cole Fraher
Emma Niemczyk Geptord

Marie Russell Harkey
Demetra Caporal Hoshall
Cynthia Dianne Lacy
Carolyn Mainard Manes
Mary Hooton Melvin
Patricia Ann Milligan
Norma Teague Pyron
Stephanie Wuller Simpson
Mergie Smith Watters
Terri Leathers Wilkin
Suzanne Yowell

Beta Pi Indiana State

Founders Circle
Marty Kuhn Pool

Lunar Circle
Ann Mullen Bronsing

Carnation Circle
Kathryn Schultz Catanach
Bennita Baker Kennedy

Toni Perkins Kubly
Janet A Morgan

Other Donors
Ruth Nash Aldridge
Marsha Thompson Basanda
Nancy Phillips Bassett
Margie Calvert Bianchetta
Judith Goetze Bianey
Kathy Jo Callahan
Victoria Schluter Cotfield
Judith Pike Coy
Cheryl Woolfs Delap
Carole Gilbert Frazier
Maryellen Ivy George
Virginia Clarke Hardt
Denise Henderson
Barbara Wilson Hinshaw
Barbara Long Hochgesang
Cyndy Meisner Howes
Virginia Nichols Johnson
Linda Diane Lee
Rea Kinkade Linville
Linda Johnson Lowry

Karen Parker Lynn
Gladys Sims Marlur
Karen Herring Matthews
Rosemarie Harris Robson
Jacquelyn Ann Schultze
Karen Hollars Shepherd
Kathy Lou Stogsdill
Lynda Binford Thomas
Leslie Johnson Valandingham
Mary Jane Vieck
Peggy Vieck
Mary Keegan Ward
Billie Willett Wintin

Beta Rho Colorado

Lunar Circle
Lynn Towsley Hamblin

Carnation Circle
Jeanne Schroll Aden
Virginia Ann Bear
Diane Hopple Bregenzler
Lyndall Lehan Cook
Anne Golseth
Jeannette Stoll Kaelin
Marilyn Beardmore Kay
Nancy Jenkins Kitt
Kay Temple Patterson

Other Donors
Elizabeth Cresap Aikin
Sandra Caughran Anderson
Shirley Flolo Bahde
Margaret McGuire Betchart
Victoria Roop Bundy
Nancy Joan Cole
Ellen R Fales
Elise Ferrari
Evelyn Viviano Harms
Patricia Grohne Harrison
Victoria G Hunsicker
Valerie Johnson Kates
Elizabeth Rose Kauffman
Carol Lee Kizzia
Jane Reading Kolmer
Ruth V Koons
Karen Baldwin Lauer
Elizabeth Crosby Martin
Mary Beth Jensen McCoy
Melinda McCormick McKinney
Barbara Pratt McMullin
Margaret Brummett Nordie
Phyrne McKennan Osborne
Katherine Spangler Peterson
Dorothy Rekestad Phillips
Margaret Roath
Dr. Shari Samansky Summers
Capt Frances Grace Washburn
Milly Ross Westphalen
Maria Green Woelckener

Beta Sigma Washington State

Founders Circle
Rosetta Roodhouse Erb

Carnation Circle
Rita Long Bradley
Trudy Henriksen Kramer

Other Donors
Kristin Pierce Beals
Ernestine Freitas Brennon
Marcia Clacy Charlton
Kelly Suzanne Clarke
Diane Clark Coblentz
Mary Lou Enberg
Brooke Healy
Joan Trotzer Horn
Kathleen Riddle King
Sharon Radach Lange

Laurie Hoover Latta
Heidi Karol Nakamura
Beverly Fennimore Palmer
Frances E. Radewan
Corinne Lyle Rowe
Colleen Sweeney Unterreiner

Beta Tau Texas Tech

Lunar Circle
Susan Jack Banks
Patricia Johnson Hutchens

Carnation Circle
Becky Taube Beeler
Karen Harrison Davis
Diana Brown French
Dorothy Foltyn Killian
Marilyn Foster Lookadoo
Debrah Sullivan Moore
Sharon Butler Owens
Ava Willingham Ray

Other Donors
Debra Haigood Alston
Beverly Cleone Ashton
Paula Bell
Kathryn Reynolds Bennett
Barbara Teal Berry
Ernestene Lee Bowman
Judy Dacus Bybee
Peggy Campbell Clark
Lola Meek Cone
Frances Kirk Cranfill
Shawn Green Drewes
Dolores Hunt Foster
Marilyn Parish Fowler
Laverne Hulin Haley
Sara Elizabeth Holmes
Jane Stephens Justice
Sarah Childress Lofland
Catherine Balzer Lorino
Stacey Lee Lowe
Miriam Jennings Mayhew
Terri McMurray Nieser
Mary Catherine O'Malley
Dawn Pleasant Parker
Ellen Dunias Roddy
Anna Balzer Rothrock
Ann Ohern Schroeder
Mary Reinhart Smith
Marilyn Dunagan Stubbeman
Beverly Ann Truett
Lynda Hooper Weaver

Beta Upsilon Kansas State

Carnation Circle
Joanne Starkweather Chapman
Mildred Goreham MacKenzie
Mary Eaton Matuszak
Mary Johann Sheneman
Debbie Steiner Smith

Other Donors
Linda Turney Adams
Susan Henderson Bowman
Rosemary Wineinger Butler
Janice Edwards Christie
Victoria Louise Clegg
Donna Manning Eshelman
Lisa Marie Ford
Lonise Pfisterer Grosdidier
Jo Goetz Heasty
Aldre Holmgren Hotujac
Betty Dawson Husted
Cynthia Lueker Klug
Shawna Lynne Lawrence
Sheryl Smith Mundhenke
Caroline Preddy Pickens
Debra Barringer Powell
Kathryn Busch Setchell

Foundation Giving Levels

Founders Circle—gifts of \$1,000 or more

Loyalty Circle—gifts of \$500 to \$999

Lunar Circle—gifts of \$250 to \$499

Carnation Circle—gifts of \$100 to \$249

The levels are based on the Foundation's cumulative giving records since 1980. If these amounts do not coincide with your records, please notify the Foundation at Central Office to receive proper credit in the future.

Foundation

Sharon Anthony Tatge
Jacqueline Commerford Unruh
Rita Kay Sutter Walker
Emily Jane Walters
Janice Wanklyn Wissman

Beta Phi Indiana

Carnation Circle

Nancy Tarrow Bartels
Nancy Adams Cripe
Carol Ellingwood Franks
Nancy Graves Hensler
Nancy Sue Kuper Huebner
Judith Harness Jennings
Marcia Mau
Melody Kay Nedrud
Elizabeth Schnepl

Other Donors

Nancy Gould Adams
Carol Goodwin Aldrich
Laureen Small Allbright
Mary Conrad Armstrong
Jillann Bruce Beeson
Irene Hozdovich Behling
Frida Nelson Cannon
Kimberly Taylor Casey
Mary Lewis Cole
Carolyn Anne Cooney
Rita McLinden Cron
Kathryn Mallette Densborn
Susan Ann Dudley
Linda Ruth Dyerly
J. Marilyn Ellsperman
Julie Wheeler Funke
Amy Stallings Glover
Betsy Hoffman Gould
Elizabeth Harris
Constance Tormoehlen Himes
Karen Claxton Hindman
Amy Lee Hoyer
Lynn Buckmaster Irwin
Joyce Burns Janeka
Maureen Ann Kiley
Susan Waller Kinnamon
Susan Lower Long
Mary Beth Maginn
Kim Ellen McPheters
Diane Frances Murray
Suzy Newman
Diane Dross Nichols
Judith Ruhl O'Neill
Elizabeth Ahlemeyer Quick
Stephanie Risch Riggs
Shirley Gilliam Ross
Carole Bierbaum Schlenker
Jan Bates Wheeler
Sarah Pihulic Wojcik
Madeleine Ann Yucevicius

Beta Chi Wichita State

Lunar Circle

Verla Rutherford Eston
Joyce Cole Hultgren

Carnation Circle

Wauketa Craw Wright

Other Donors

Donna Jabara Baker
Jacquelyn Hager Barngrover
Barbara Ward Basi
Verla Cox Cook
Teresa Salsman Craig
Laura McMullen Cross
Carinne Miller Davis
Renee Farha
Blenda Woelk Grossenbacher
Vinita Hood Hoffman
Nancy Hammel Kuehler
Barbara Kemp Martin
Janet Wasinger Moody
Shirley Sayers Russell
Mylene Saylor
Jannell D Senn
Diesa Bostic Snyder

Beta Psi Oklahoma State

Lunar Circle

Barbara Ann Beeman
Phala Fuller Warner

Carnation Circle

Frances Council Fristoe
Ms Chereilyn Gibbs
Emily Sue Hansen
Teresa Gibbs McCalley
Marsha McCollum Schumacher
Linda Joy Smith

Other Donors

Linda Rae Baker
Barbara Tolle Cavanaugh
Sherry Lynn Davis
Marian Beck Edwards
Mary Chapman Fairlamb
Linda Ferguson Flowers
Lucille Stover Foster
Ms Sheila Sue Foxworthy
Cynthia Parks Gray
Rheta Nowlin Grisham
Gladys Hughes Heath
Wilma Kindt Henderson
Carole Klaus Higgins
Ellen Pope Hunt
Eowana Peters Jordan
Reva Benton Laughlin

Edith Edmundson Osborn
Heidi Beth Pracht Rogers
Melba Quick Spurrier
Linda Newman Steer
Victoria Oxman Wilson

Beta Omega Northern Arizona

Founders Circle

Jennie Kathleen Curtis

Carnation Circle

Marni Shonerd Godin
Maxine Tollefson Holliday
Beth Kornrump Rhue
Keena Kline Sampson

Other Donors

Wendie Gard Black
Patricia Ball Blanchard
Brenda Leigh Borrett
Vicki Gardner Corea
Karen Ann Courtney
Nancy Taylor Hushek
Princess Humphrey Killebrew
Margo Williams Penardi
Anne Colette Petrie
Marilyn Faris Scholl
Linda Lees Stiegler
Virginia Martin Stroup

Gamma Alpha Memphis State

Lunar Circle

Mary Agnes Welsh

Carnation Circle

Paula Janis Dean

Other Donors

Sandra Graham Cude
Allene Brown Dienna
Betty Asbridge Reeves

Gamma Beta Gettysburg

Carnation Circle

Toby Orem Graham
Lynnae Betts Steinberg

Other Donors

Patricia Frances Bischoff
Carol MacArthur Bishop
Laura Davio
Thelma Hughes Dick
Karen Kroggel Ferg
Bonda Schafer Fredrickson
Jodi Elizabeth Hopper
Linda Lee Luttrell
Elizabeth Hauslein Martinson
Katherine Schirmer Mazzuchi
Luanne Michelle Muscaro
Susan Pahides Schultz
Karen Leigh Shipe
Marcia Lynn Walker
Cynthia Eni Yingling

Gamma Gamma Wisc-Milwaukee

Lunar Circle

Renee Marie Galewicz

Carnation Circle

Victoria Niemann Friede

Other Donors

Joan Howard Aller
Janis Sheahan Frank
Karen Joost Henry
Teresa Lea Jensen
Kristine Papa Kaiser
Victoria Bishop McLaughlin
Dorothy Clark Nagy
Diane Cyzmoure Peterson
Barbara Robertson Posekany
Diana Schuchardt Scheelk

Gamma Delta Wyoming

Carnation Circle

Martha Dougherty Delanyo
Kristin Brandt Riske

Other Donors

Mary Beacon Ferguson
Sharon S Rice
Janice Jones Rising
Evelyn Morgan Snook

Gamma Epsilon Puget Sound

Sheryl Lynn Bollinger
Janet Durbin Dearthoff
Carol Hubbach Fratt
Lenita Krueger Johnson
Joan Salzer Kuhlmann
Jeanyne Burleson Marshall
Karen Marie Perry
Martha Anne Wangeman

Gamma Zeta East Texas State

Carnation Circle

Jacqueline Painter Mann
Cynthia Fry Vaughan

Other Donors

Alice Looney Brown
Jerre Parker Geiger
Barbara Watts Humphrey
Carol Gann Lee
Evelyn Daniel Means
Donna Jo Moore
Jan Lovell Riley
Judy Lanell Sandidge
Janna Gaye Thomas
Mona Gail Tinsley
Vicki Ann Vaughan

Gamma Eta Cal State Long Beach

Loyalty Circle

Randall Stevens Guerra

Carnation Circle

Shelby Wilson McGirr
Linda Hallenbeck Pelegrino
Janet Parker Whitcomb

Other Donors

Judith Nesbitt Abbott
Carol L. Alexander
Nancy Joyce Cohn
Barbara Gorey Gilcrest
Sheila McCarthy Hewitt
Cynthia Bettencourt Icardo
Karen Alice Leuer
Jacqueline Miller Mahan
Diana Mies Osterhues
Cynthia Dorris Ray
Brenda Nelson Sanders
Jeannine Genest Shelton
Kim Louise Spilsbury
Linda Watson Wheeler
Mary Severdia Wohlgenuth

Gamma Theta Pacific

Carnation Circle

Janice Sanguinetti Graves
Elinor Harrold Sagehorn
Lucile Keplinger Smith

Other Donors

Michele Tamamian Cooper
Peggy Smith Fellows
Shirley Middleton Mikels

Gamma Iota Midwestern State

Carnation Circle

Alice Gee Jordan

Other Donors

Ginger Giles Gluck
Elizabeth Hunt Henderson
Phyllis Haubert Laughon

Gamma Kappa Kearney State

Carnation Circle

Dr Edna Lue Furness

Other Donors

Gaylene Brown Aden
Eleanor Saunders Dale
Mary Buchanan Mach
Deirdre Spencer Smith
Diane Stricker Viesselmeier
Susan Louise Zetterman

Gamma Lambda Louisiana State

Carnation Circle

Cathy Boudreaux Griffin

Jane Opal Rinehart

Other Donors

Susan Henry Bastek
Judith Zatarain Gordon

Gamma Mu Moorhead State

Linda Lee Acosta
Carla Lynn Braun
Jody Edwards
Barbara Tatley Inch
Jill Susanne Thingelstad

Gamma Nu Lamar

Carnation Circle

Vickie Aails Bennett
Mary Ann Terry

Other Donors

Barbara Sanders Buckley
Marjorie Rember Carrrol
Susan Saterbak Chapman
Kathryn Willford Kirkland
Linda Lane Morris
Marlynn Lee Rumm
Kathleen Lee Young
Susan Marlow Zeigle

Gamma Xi Tennessee

Carnation Circle

Patricia Ann Blissitt
Pamela Jean Sweeney

Other Donors

Gail Herndon Fennimore
Cheryl Darcel Gunter
Charlotte Headrick
Nancy Melinda Hunley DDS

Gamma Omicron Kentucky

Carnation Circle

Bettie Brooks Cochran
Diane Kroggel Crandell
Luann Holmes
Marcia Lynne Semple
Mary Forsyth Wischer

Other Donors

Jennifer McNew Appelt
Cathy Lou Cochran
Josephine Sims Nutter
Kathleen Marie Young

Gamma Pi Mankato State

Lunar Circle

Dianne Appelwick O'Konski

Carnation Circle

Audrey Hork Seitz

Other Donors

Laurel Bodelson Andrews
Diane Hemmingson Gomez
Carolyn Wiecks Hess
Kathryn LaFavor Hoffner
Pamela Jean Leach
Margaret Boynton McEwen
Maureen Kay Sigler

Gamma Rho Oshkosh

Christine Tresselt Ailts
Marilyn Bachnik Callahan
Christina Diana Hartmann
Kathleen Bartels Maccoux
Gail Gleisner Pludeman
Katherine Wehner Reff
Katherine Maloney Strycker

Gamma Sigma Western Michigan

Carnation Circle

Kathleen Hartsema Novak
Linda Eschenburg Ryden

Other Donors

Christine Ann Allen
Susan Lynn Heath
Kathryn Klesney Metcalf



Hiking and swimming create big appetites.

**Gamma Tau
St Louis**

Founders Circle
Patricia O'Connell Mullins

Carnation Circle
Jill Tennis Heitzman

Other Donors
Mary Luetkenhaus Bedient
Mary Ann Clark
Mary Crannell Craven
Alice Cole Landholt

**Gamma Upsilon
Drake**

Carnation Circle
Patricia Ann Korengel
Susan Wehling Rogaliner
Vicki Asprooth Roy

Other Donors
Carol Jardine Dworak
Linda Elaine Engelbert
Carol Seigal Geller
Cynthia Claire Graves
Rae Henoch McKenna
Barbara Hames Murphy
Jane Mabb Sersland
Peggy Marquardt Stansberry
Mary Oudsema Stevens
Mary Eloise Stoikes

**Gamma Phi
Auburn**

Founders Circle
Latane Jordan Graham

Carnation Circle
Laura Mortensen Gladney
Margo Petroski

Other Donors
Suzanne Michelle Book
Denise Huggins Brooks
Marian Naylor Davies
Elizabeth Tunnell Deal
Alice Berry Hagler
Catherine Cummins Hayes
Janet Mahafey Hoomes
Betty Jean Ingwersen
Violet Baswell Mahaffey
Charlene Bunting Paulk
Kimberly Cannon Smitherman
Alma Smith Stoves
Jacquelyn Lulkin Stuart
Joan Allen Thornton
Jane Luster Williams
Carmen Webber Woodham

**Gamma Chi
Southwest Texas St**

Claralynn Morris Dilling
Lisa Ann Gondesens
Sharon Smith Graham
Mary Mireur Lofton
Ginger Davies Waggener
Carol Bryant Wilson

**Gamma Psi
Northern Iowa**

Carnation Circle
Christine Mineart Turnipseed

Other Donors
Barbara Teig Adams
Ella Cowlishaw Bartley
Nancee Nesselroad Cook
Rhonda Hessel May
Jo Whitehead Neiss
Virginia Chizek Schene
Shelly Susan Smith

**Gamma Omega
Wisc-Platteville**

Nancy Truitt Fellows
Frances Webb Kopp
Ruth Riechers Mathe
Marie Stuelke Robinson

**Delta Alpha
Wisc-River Falls**

Virginia Henneman Dolesy
Rene Joy Lehman
Christy Louise Lingenbrink
Tammy Jean Wouffe



Happy campers play fetch.

**Delta Beta
Boise State**

Debie Jean Beavers
Christine Welch Galvan
Mary Mackey Knutson
Karen Johnson Mengel
Sue Ellen Williams

**Delta Gamma
Nebraska-Omaha**

Carnation Circle
Mary Wattles Bryans

Other Donors
Nancy Burrell Herrod
Louise Lewis Rohrbough

**Delta Delta
Cal State Fullerton**

Carnation Circle
Miriam Jean Borovinsky
Cheryl Anne Speer

Other Donors
Denise Dempster Cattern
Ann Janette Devlin
Michele Marie Garden
Teresa Sullivan George
Eloise Susan Hock
Beverly Johnson Janssen
Laura McBride Kayoda
Jo An Levy
Deborah Dykes Misiag
Marybeth Norgren
Alaire Hinkel Outlaw
Amy Lee Mei Packer
Joann Carter Ringland
Barbara Thomson Velasquez

**Delta Epsilon
Texas Wesleyan**

Patricia Ann Brooks
Margaret Frances D Medina
Regina Peck

Kathryn Ann Thurston
Karen Eileen Tripe

**Delta Theta
Cal Poly San Luis Ob**

Carnation Circle
Ann Brownsberger Hiller
Leigh Ann Moylan
Ellen Frances Penne
Debra Cribbins Witham

Other Donors
Kimberly Lynn Blakkolb
Margery Ziemann Blodgett
Elizabeth Bromfield Cuthbert
Deborah Silk Furtado
Cheryl Dara Gerard
Sherri Himelhoch Kimmelshue
Beverly Brintnall Merwin
Karen Louise Nason
Janet Muller Nissen
Linda Michele Tammel
Julie Moser Willis
Lynda M Zigrang

**Delta Iota
Purdue**

Carnation Circle
Catherine Renee Beck
Ann Cibula Zultner

Other Donors
Ruthanna Borden Amy
Janice Smith Coleman
Carolyn Schnirring Dungan
Elizabeth Jane Fritzsche
Renee Ann Harrison
Ms Karen Elizabeth May
Anne Cynthia McGill
Ann Verdecchia Moore
Jennifer Ann Mueller
Kim Dell Parshall
Angela Early Schroeder
Bonnie MacNeal Sheil
Kathleen Ann Sutherland
Susan Lyn Waterman
Janet Dawn Youngblood
Roberta Hunter Ziccarelli

**Delta Kappa
Lehigh**

Carnation Circle

Foundation Giving Levels

Founders Circle—gifts of \$1,000 or more
Loyalty Circle—gifts of \$500 to \$999
Lunar Circle—gifts of \$250 to \$499
Carnation Circle—gifts of \$100 to \$249

The levels are based on the Foundation's cumulative giving records since 1980. If these amounts do not coincide with your records, please notify the Foundation at Central Office to receive proper credit in the future.

**Delta Zeta
Southwestern State**

Hannah Marie Craig
Norma Lynch Speegle

**Delta Eta
California-Irvine**

Lunar Circle
Catherine Ann Holland

Carnation Circle
Helga Wurster Russell

Other Donors
Jacqueline Jael Bukofzer
Bonnie Leigh Burdette
Kathy Peterson Carnegis
Lorene Robin Chee
Lenore Frances Dowling
Karen Tannewitz Gregory
Anne Heise Lara
Sharon Gathmann Law
Dr Susan S Nimmo
Norma Jean Yokota Norwood
Karen Malone Ottoson
Myra Woodfin Renaud
Denise Wagoner Siedhoff

Rosalind Evans

Other Donors
Sandra Leah Buschmann
Elaine Marnell Gebhard
Maura Jo Gouker
Christiana Davidson Holland
Peggy Lewis Houghtaling
Dr Geryllyn Marotta Prosswimmer
Maryann Leonardi Wymore

**Delta Lambda
Calif Riverside**

Carnation Circle
Corinne Fossum Mensinger

Other Donors
Dawn Chappell
Julia Hews Everett
Nannette Meredith Milton
Lorraine Susan Morrison
Lorraine Diaz Watson

**Delta Mu
Rutgers**

Carnation Circle
Kathleen Lynn Wilson

Other Donors
Mary Teresa Coletta
Linda Anne Kissell
Audrey E Kramer
Helene Kushner
Sharon June Simandi

**Delta Nu
S W Missouri State**

Carnation Circle
Elizabeth Anne Lampe

Other Donors
Lisa Bergman Garder
Barbara Jo Christenson
Melissa Meihofner Freund
Charlene Carol Gullett
Elizabeth Lou Horn
Connie Jo Ramsey
Claudia Webster
Linda Waxberg Wiebe

**Delta Xi
Bucknell**

Carnation Circle
Ann Elizabeth Isban
Sandra Beth Solomon

Other Donors
Linda Jamison Berry
Ms Jane Elizabeth Blake
Carol Israel Casten
Cheryl Cole Fiery
Karen Maria Hamerski
Katherine Dowler Murphy
Janet Lee Ward
Jessica Rebecca Weichsel

**Delta Omicron
Southern Tech**

Ms Diana Eros
Susan Catherine Konrad

**Delta Pi
Illinois St Normal**

Renee Ann Ciessau
Noreen Ann Kelly
Elizabeth Klein Manning
Nancy Ann Wold

**Delta Rho
Dickinson**

Carnation Circle
Lisa Ann Deon

Other Donors
Laurie M Bacon
Terri Ann Kehm Conoscuio
Gail Laurie Horowitz
Kathleen Marie Kelly
Nancy Lynn Pierce
Barbara Steinberg

**Delta Sigma
Florida Inst Tech**

Gloria Olga Deren
Teresa Tesh Duhring
Mary Margaret Moore
Mary Frances Osborne
Mariou D Overla
Marion Eugenia Rawls
Linda Tisdale

**Delta Tau
Colgate**

Sharon M Swetz

**Delta Upsilon
Georgia**

Carnation Circle
Nancy Davies Jacobson

Other Donors
Martha Payne Mendenhall

**Epsilon Beta
Alma College**

Dorene Dunn Lewis

Epsilon Gamma

Elizabeth Elaine Hornbrook
Vickie Lynn Minardi

Officers

Province I Alumnae Director Anne Layton (McGill) Alumnae Chapter: Montreal, Que. **Career/Activities:** Pension and Benefit Funds manager, VIA Rail Canada, Inc.; Junior League **Interests:** traveling, reading, volunteering

Province II Collegiate Director Becky Taube Beeler (Texas Tech) Alumnae Chapter: New York City, N.Y. **Career/Activities:** IBM engineer **Interests:** biking, skiing, traveling



Anne Layton, Becky Beeler

Province II Alumnae Director Carolyn Vick Anderson (W. Virginia) Alumnae Chapter: Pittsburgh, Penn. **Career/Activities:** tax consultant, PTA, Brownie Troop co-leader **Interests:** traveling, cooking, baking, people

Province II Collegiate Director Leigh A. Moylan (Cal. Poly-San Luis Obispo) ΓΦΒ Relative: Laura Moylan Murphy (San Diego St.) **Career/Activities:** Corporate Operations assistant manager and media broker, The Holt Corporation, Bethlehem, Penn. **Interests:** traveling, music, sports, cats



Carolyn Anderson, Leigh Moylan

Province III Collegiate Director Lisa Gravette (Bowling Green) Alumnae Chapter: Dayton, Ohio **ΓΦΒ Relatives:** Carole Coles Gravette, Linda Gravette Constable (both Bowling Green) **Career/Activities:** learning disabilities teacher; adjunct professor, Wright State Univ. **Interests:** crafts, classes/workshops, friends

Province III Alumnae Director Patricia Pivonka Wagar (Bowling Green) Alumnae Chapter: Cleveland East, Ohio **Career/Activities:** home economics teacher **Interests:** needlework, cooking



Lisa Gravette, Patricia Wagar

Province IV Alumnae Director Julie Wheeler Funke (Indiana) Alumnae Chapter: Indianapolis, Ind. **Career/Activities:** vice president, Maury Boyd and Associates, Inc.; National Interfraternity Conference liaison; Women in Communications; Lawrence Township Educational Council; Lawrence North High School Parent Faculty Board



Julie Funke

Area Financial Advisor Sherry Crow Adams (Nebraska) Alumnae Chapter: Lincoln Neb. **Career/Activities:** teacher and department chairman, Waverly Education Association, Delta Kappa Gamma, National Council of Teachers of Mathematics, church **Interests:** bridge, needlepoint, latch hooking



Sherry Adams



Gail Pludeman, Karen Henry

Province V Alumnae Director Gail Gleisner Pludeman (Wis.-Oshkosh) Alumnae Chapter: Milwaukee, Wis. **Career/Activities:** PTA, child care, swim club, children's center auxiliary, church group **Interests:** crafts, sewing, outdoors

Province V Collegiate Director Karen Joost Henry (Wis.-Milwaukee) Alumnae Chapter: Milwaukee, Wis. **ΓΦB Award:** Merit Roll **Career/Activities:** teacher of the deaf, public schools **Interests:** knitting, sewing, bowling, decorating, needlework



Maureen Sigler, Cindy Schultz

Province VI Collegiate Director Maureen Sigler (Mankato St.) Alumnae Chapter: Grand Forks, N.D. **Career/Activities:** Student Organizations coordinator, N. Dakota State Univ.; Association of College Unions-International; Phi Delta Kappa **Interests:** photography, traveling, movies

Province VI Alumnae Director Cindy Shirley Schultz (Iowa St.) Alumnae Chapter: Minneapolis-St. Paul, Minn. **ΓΦB Relative:** Gretchen Schultz (Iowa) **Career/Activities:** career counselor, Macalester College; president, Minnesota Career Development Association; board member, Minnesota Association for Counseling and Development **Interests:** tennis, home remodeling



Mary Griffith

Province VII Alumnae Director Mary Fisher Griffith (S. Methodist) Alumnae Chapter: Austin, Tex. **ΓΦB Relatives:** Linda Fisher Price (S. Methodist), Linda Griffith, Cheryl Griffith Burris, Jennifer Griffith (all Texas) **Career/Activities:** political campaigning, church choir and administrative board **Interests:** reading, piano, sewing



Anne Hartje, Sandra Nauman

Province VIII Anne Phillips Hartje (Vanderbilt) Alumnae Chapter: Jacksonville, Fla. **Career/Activities:** advertising account executive, N.W. Ayer **Interests:** singing, antiques, interior decorating

Province VIII Collegiate Director Sandra Rettke Nauman (Arizona) Alumnae Chapter: Atlanta, Ga. **ΓΦB Relative:** Diana Nauman Brockelbank (Arizona) **Career/Activities:** legal secretary, Metropolitan Life Insurance; Roswell Historical Society; typing teacher, Prison Ministries; Questers International; church **Interests:** antiques, traveling, needlework, white water rafting, skiing, writing poetry



Cathy Griffin

Area Financial Advisor Cathy Boudreaux Griffin (Louisiana St.) Alumnae Chapter: Princeton Area, N.J. **ΓΦB Relative:** Cindy Boudreaux Redmon **Career/Activities:** director, nursery school; Junior League; Princeton Medical Center **Interests:** skiing, SCUBA diving, children's literature

Officers

Province IX Collegiate Director Ellen Matthews Duncan (Oklahoma) Alumnae Chapter: Weatherford, Okla. **ΓΦΒ Relative:** Laney Duncan (Oklahoma) **Career/Activities:** office manager, medical office; Mothers' March of Dimes; softball coach **Interest:** bowling

Province IX Alumnae Director Clarice Braker Morrison (Oklahoma City) Alumnae Chapter: Oklahoma City, Okla. **ΓΦΒ Award:** Merit Roll **Career/Activities:** president, FreightLink Corp.; board member, Lyric Theatre; church; president, Christian Women's Fellowship; Junior Hospitality Club **Interest:** performing arts



Ellen Duncan, Clarice Morrison

Province X Collegiate Director Joanne Callis Roman (Vanderbilt) Alumnae Chapter: St. Louis, Mo. **Career/Activities:** financial systems accountant specialist, church group **Interests:** volleyball, racquetball, weaving, needlework, crafts

Province X Alumnae Director Alice Van Horne Huff (Missouri) ΓΦΒ Relatives: Patricia Huff Bill (Vanderbilt), Stephanie Huff (Missouri) **Career/Activities:** board member, public library; P.E.O.; Daughters of the American Revolution; church **Interests:** tennis, golf, bridge, traveling



Joanne Roman, Alice Huff

Province XI Alumnae Director Amanda McCoy Harries (Arizona) Alumnae Chapter: Phoenix, Ariz. **ΓΦΒ Relatives:** Amy Harries, Flossie Hagen McCoy (both Arizona) **Career/Activities:** executive director, East Valley Cultural Alliance; Junior League; docent, Phoenix Art Museum; political campaigning; Arizona Academy of Town Halls **Interest:** traveling

Province XI Collegiate Director Sharley Wallace Langlee (Denver) Alumnae Chapter: Denver, Colo. **Career/Activities:** employed by Martin Marietta Data Systems; graduate student, Univ. of Phoenix **Interests:** reading, skiing, piano



Amanda Harries

Province XII Alumnae Director Janet Inman Arbuckle (British Columbia) Alumnae Chapter: Vancouver, B.C. **Career/Activities:** French Immersion, kindergarten teacher **Interests:** swimming, speaking French, traveling, family, friends

Province XII Collegiate Director Ann Marie Molenaar (Idaho) Alumnae Chapter: Boise, Ida. **ΓΦΒ Relatives:** Georgia Molenaar, Susan Molenaar Butterfield, Jackie Molenaar Churchill (all Idaho), Nikki Dages (Boise St.) **Career/Activities:** owner, retail jewelry store; board member, Intermountain Jewelers Association; board member, Chamber of Commerce; Junior League **Interests:** soccer, skiing, riding, golf, tennis, reading



Janet Arbuckle, Ann Marie Molenaar

Area Financial Advisor Kathleen Sage (Arizona) Alumnae Chapter: Tucson, Ariz. **Career/Activities:** Docent Council, Arizona Historical Society; Hopi Indian research **Interests:** Kachina carving, casting and lecturing

Area Financial Advisor Janny Jones Strickland (Denver) Alumnae Chapter: Dallas, Tex. **Career/Activities:** business graduate student, Univ. of Texas-Dallas **Interests:** traveling, house plants, women's health education



Kathleen Sage



Janny Strickland



Linda Brooks, Roxanne Bomersine, Jacki Falkenroth

Province XIIIb Alumnae Director Linda Brooks (Cal.-Berkeley) Alumnae Chapter: San Francisco, Cal. **Career/Activities:** employed by U.S. District Court, Northern California District; extension classes **Interests:** cooking, swimming, jogging, biking

Province XIII Collegiate Director Roxanne Rockwell Bomersine (Cal-Berkeley) Alumnae Chapter: San Francisco, Cal. **Career/Activities:** owner, flower shop **Interests:** reading, swimming

Province XIIIa Alumnae Director Jacki Ennis Falkenroth (Nevada) Alumnae Chapter: Diablo Valley and Pleasanton, Cal. **ΓΦΒ Award:** Merit Roll **Career/Activities:** administrative assistant, professional resource group; teacher; AAUW, PTA **Interests:** traveling, skiing, hiking, camping, canoeing



Deborah Misiag

Province XIV Collegiate Director Deborah Dykes Misiag (Cal. St.-Fullerton) Alumnae Chapter: Washington, D.C. **ΓΦΒ Relative:** Carolyn Collier Mooney (Ohio Wesleyan) **Career/Activities:** teacher **Interests:** traveling, real estate investing



Sharon Dunham, Diane Thompson

Province XV Alumnae Director Sharon Witt Dunham (Nebraska) Alumnae Chapter: Omaha, Neb. **ΓΦΒ Award:** Merit Roll **Career/Activities:** teacher; trustee, public library **Interests:** bridge, aerobics, sewing, reading

Province XV Collegiate Director Diane Thompson (Iowa St.) Alumnae Chapter: Ames, Ia. **Career/Activities:** bookkeeper; board member, church; interior designer **Interests:** Saint Bernards, piano, sewing, needlework, cooking, traveling



Susan Rose, Barbara McKewen, Patty Giese, Ellen Penne

Province XVIa Alumnae Director Susan Jacobsen Rose (UCLA) Alumnae Chapter: Long Beach, Cal. **ΓΦΒ Award:** Merit Roll **Career/Activities:** track meet official, Faculty Wives, Symphony Guild, church **Interests:** skiing, traveling, Olympics, tennis, jogging, gardening, home

Province XVIb Barbara Davis McKewen (San Diego St.) Alumnae Chapter: San Diego, Cal. **Career/Activities:** clerk, school district compensatory education program **Interests:** sewing, gardening, traveling, reading, walking

Province XVIb Collegiate Director Patty Lazos Giese (San Diego St.) Alumnae Chapter: Balboa Harbor, Cal. **Career/Activities:** teacher, Children's Hospital Guild **Interests:** tennis, needlepoint

Province XVIa Collegiate Director Ellen Penne (Cal. Poly-San Luis Obispo) Alumnae Chapter: San Fernando Valley, Cal. **Career/Activities:** nutrition specialist, school district; food service consultant **Interests:** cooking, tennis, skiing, outdoors

Watch for more international officer profiles in future issues of THE CRESCENT.

Books



Judy Harris Swenson (Arizona St.)

Understanding Pressure

by Judy Harris Swenson

The *Understanding Pressure* books have been designed by Judy Harris Swenson (Arizona St.) to help children cope with events that cause them stress.

Judy says the books (*No One Like Me; Cancer: The Whispered Words; Feeling Down: The Way Back Up; What Should I Do?; Learning to Make Choices; and Learning My Way: I'm a Winner*) are a summation of her life experiences and those of coauthor Roxane Brown Kunz. Kunz is a professional school psychologist and certified reality therapist, and Judy, a former teacher, dubs herself a "professional full-time volunteer in a variety of school and community programs." All their contacts have provided background for the books which are told in first person narrative by a fictional character who takes the child's point of view.

Although geared to second through sixth graders, the books are quite versatile, Judy says, because "they offer insight and understanding into certain stressful family situ-

ations. Older children may find the books on suicide, cancer and learning differences particularly helpful," she adds. "The information and coping skills pertain to everyone."

Each book has a glossary of terms and an adult resource guide with suggestions to help adults deal with children. Children most need adults to listen to them, Judy says. Communication is paramount. "Find out what is important to children, what hurts, what they fear, what they don't know how to handle. Concentrate on their strengths."

She advised parents to "separate your dreams and personal experiences from your children. By asking your children to become what you have not, you are adding unnecessary stress to the difficult task of growing up. If children learn to feel good about who they are and develop problem solving and coping skills while they are young, they will be much better prepared as adults to meet the challenges of life."

Judy is on the board of the Arizona Association for Children and Adults with Learning Disabilities. A member of CanSurmount, a cancer patient support group, she also serves on the advisory committee for special education in her local school district.

You and the Senior Boom

By Louise Minter Odell

You and the Senior Boom by Louise Minter Odell (Syracuse) and her husband Charles is an attempt "to interpret to our own generation and to those in the baby boom generation that some good things exist about maturing and growing older."

"We estimate that by the year 2010, persons 60 years and older in this country will constitute a \$1 trillion market," she writes. "This is something to think about in terms of new products, services and opportunities for employment and enjoyment."

Currently on the faculty of Lesley College, Cambridge, Mass., Louise

received her doctorate at age 56. During 25 years of education, she directed public school music, taught family life and sex education, and developed one of the first high school units in gerontology. She also assisted her husband in pre-retirement workshops and kept in close contact with problems and issues of older people by attending workshops and conventions throughout the United States.

A group Louise dubs "young-olds" are persons in the 60 to 80 year range who are "interesting, skilled and well informed." However, they have a poor mass media image, she says.

This is a time to reevaluate, Louise writes. Look at what you have rather than don't have. Learn about optimism rather than pessimism. It is a time to count blessings. "Too many 60- to 80-year-olds feel sorry for themselves." The best way to counteract this feeling is to become involved with helping others.

The book points out that female concerns are different from male. Women easily become lonely and bored, especially if widowed. Louise cites three basic approaches to living to ensure continued happiness: 1) be enthusiastic about wherever you find yourself. With this comes



Louise Minter Odell (Syracuse)

peace and friends; 2) do things the easy way; 3) live with elegance always. "Flexibility is the sign of a big mind, and the opportunity for new experiences is a delight of empty nest living."

Another concern for women is loss of job, thus removing a sense of worth. Volunteer activities are one way around this, Louise counsels. Or women could try part-time work or take adult education courses. It is never too late to learn what retirement is all about, she says.

A third concern is changes in appearance like weight gain, grey hair and wrinkles. Staying mentally alert and having a pleasing, interesting personality are the antidotes to combat physical changes.

But the best things about being older than 65 are: leisure; freedom from responsibility; not having to work; pension/investment support; enjoying children and grand-children; being more experienced; satisfaction with life; security; sense of accomplishment.

Youth and older persons need each other, Louise notes. "At present, society is for the most part shelving older people," yet only five to six percent are in nursing homes or other institutional care facilities. "The remaining 22 million older persons are crying for ways to be of service."

Tailspins, A Story of Early Aviation Days

By Edith Dodd Culver

Did you know Dayton, Ohio reporters passed up the hand-delivered "scoop" of the Wright Brothers' first flight? How did William T. Robey come to buy the only sheet of upside down airmail stamps released?

To answer these questions and read other stories of the early years of flight, one needs Edith Dodd Culver's (Wisconsin) *Tailspins, A Story of Early Aviation Days*. Widow of aviation pioneer Paul Culver, Edith shares memories of the first airmail flights and reminisces with mem-

bers of the Early Birds of Aviation Club (requirement for membership: to have soloed before December 17, 1916).

Spurred by the emergency of World War I, aviation came of age. But travel began before that for Edith and her husband as his assignments took them from the Curtiss Aviation School, Newport News, Va. to Princeton University, Dayton, Houston and Long Island.

In those days there were no airports, improved instruments, radio beams, beacons, aerial maps, parachutes or reliable compasses, Edith writes. A pioneer flyer flew with a road map strapped to his thigh so he could follow railroad tracks and dip down and read the town's name on the depot when visibility permitted. "He simply had to fly by the seat of his pants."

However, the first airmail pilots in 1918 were much more sophisticated than those who preceded them. The Wright Brothers' flight was December 17, 1903. By 1911, airplanes were the top draw for state fairs and other summer amusements. But, to get from one appearance to another, planes were disassembled, packed in crates, carried by freight train from one destination to another and reassembled on the spot for exhibition flying. Even at a place as up-to-date as the Curtiss School, the flying field was a strip cut through a farmer's hay field.

Culver, anxious to get in the fight overseas, reacted to his airmail assignment: "Can you feature being a mailman when there's a war on?" But the brainchild of President Wilson was initiated when the post office gave permission to fly sacks of mail for a short time between certain points to show it could be done, to speed up the war effort by flying important mail between Washington, Philadelphia and New York, and to give pilots practice flying mail cross country.

The only problem was no planes existed that were capable of flying nonstop between the cities. No post-



Edith Dodd Culver (Wisconsin)

ponement of the service's inauguration was allowed, however, because the date had already been given to the press. Reporters weren't going to miss this story the way they ignored Bishop Milton Wright's telegram from his sons stating they had made a powered flight. Six modified warplanes were ordered for delivery in eight days and airmail was started on schedule with suitable presidential and public fanfare.

Edith's tales of the early days of flight show it was a time of courage when pioneers were just learning how to keep a frail craft made of wood, wire and fabric up in the air.

Careers

Laurel Kennedy Marketing Consultant

Laurel Henry Kennedy (Missouri) has attained a dream virtually impossible for most people. The epitome of today's successful career woman, she's president of The Kennedy Organization, Inc., a marketing consulting firm in Chicago serving industrial companies and professional service firms. Through its two operating groups—strategic marketing and communications—the firm provides a full range of services from concept, research and analysis through action plan and implementation, according to Laurel.



Laurel Henry Kennedy (Missouri)

Laurel's education includes a journalism degree from the University of Missouri and an MBA with honors from the University of Chicago. Among her prior professional accomplishments are the launching of an industrial service line which registered a 300 percent per annum sales increase over a three-year span, and accounted for 40 percent of sales two years after introduction.

She has had more than a decade of marketing experience in consulting, on both the client side as director of marketing for a large industrial firm, and on the agency side as consultant to a diverse group of businesses ranging from specialty chemicals to food franchises, foreign governments and home appliances.

Laurel has won two Golden Trumpet awards from the Publicity Club of Chicago, numerous graphic awards, and has been invited to speak at the University of Chicago School of Business, Women in Communications and for Journalism Week at the University of Missouri. Her articles have appeared in *Advertising Age* and *Illinois Banker*. She is a member of the American Marketing Association and sits on boards of the National Kidney Foundation, the University of Chicago Business Group and the STA Trademarks USA: 2 committee.

She and husband Jerry, a certified public accountant who is director of auditing for a billion dollar corporation, live in Chicago.

Carol Parr University Vice President

Carol Cunningham Parr (Colorado) has been named vice president for development for the University of Maryland. She also serves as vice president of the University of Maryland Foundation, the university's nonprofit fund raising arm.

A nationally recognized administrator, Carol brings to the university more than 10 years experience in development, management and administration, and government relations. Most recently, she was executive director of the League of Women Voters of the United States and the League of Women Voters Education Fund. As such, she supervised the 1984 presidential debates the League sponsored.

Prior to her five years with the League, she was Education Policy Fellow of the Institute for Educational Leadership, and executive director of the Women's Equity Action League Educational and Legal Defense Fund. She was also an adjunct professor in the general administration graduate program at Maryland.



Carol Cunningham Parr (Colorado)

In her new position Carol is responsible for coordinating the university's fund raising activities. The university plans to increase its private support to an annual level of \$25 million by 1990. In 1985, philanthropic support for academic programs was \$11.9 million, an increase of 60 percent over the previous year.

"Maryland has the potential for being one of the nation's great universities. It is clear that an increase in private support is crucial to this achievement," says Carol. "I welcome the opportunity to help the university build on the progress it has made in fund raising in the last several years."

Carol received her doctorate from Louisiana State University, and is a

Phi Beta Kappa graduate of the University of Colorado. She lives in Silver Springs, Md.

Sandy Whittaker Social Psychologist

Sandy Oshel Whittaker (N. Dakota) does her own thing, which includes coauthoring two books with her husband, working on research all over the world and for 10 years serving as chief administrative officer in her county in Pennsylvania.

Sandy earned a bachelor's degree in speech therapy and a master's degree in social psychology. She married one of her professors and began traveling the world with him. Husband James is now a professor of psychology at Pennsylvania State University's Middletown campus. Daughter Kellie, 26, started first grade in Sao Paulo, Brazil and finished first grade in Hong Kong. At

other times the family lived in Beirut, Lebanon and Auckland, New Zealand.

With her husband, Sandy has written psychology texts that have been used by students in every country in the Americas. In fact, more than a million students have used the books in Spanish and Portuguese. They recently published a high school text in Spanish for the Latin American market.

On a recent trip to Australia and New Guinea, they initiated a research study on alcohol use and abuse among minorities such as the Aborigines. They spent time with New Guinea natives in the Sepic River area of the highlands. Some of the most primitive people in the world, these natives were headhunters until World War II. Among other things, the future will find Sandy on the national lecture circuit speaking about contrasting roles of women in third world countries and the western world.

She has some advice for colleagues: "No one ever knows for sure what they'll be doing 20 years down the road. Get the broadest education you can. Take as many courses in as many areas as possible. Don't ever expect that you absolutely will end up in a career tied to your college major. Too many women specialize, but find themselves in careers totally unrelated to their college majors." Sandy started out as a speech therapist and ended up traveling the world as a psychologist, author and lecturer.

Phyllis Davis Philbo the Clown

Philbo the Clown is really Phyllis Meister Davis (UCLA), a professional who has operated throughout the central valley communities of California for more than 20 years. "It has been a most exciting and gratifying career," Phyllis says, commenting on a profession that lets her be with "children at their best:



Phyllis Meister Davis (UCLA)

lovable, wide-eyed, interested and happy!" As Philbo, she performs at benefits, hospitals, charity events, holiday celebrations, promotions and birthday parties. She calls the personalized birthday party her "favorite form of clown entertainment."

Phyllis' love of the theatrical was put to work early when, after graduation, she was a Goldwyn Girl for Danny Kaye movies. She and her husband also shared a love of little theater and light opera productions.

Phyllis has compiled a basic booklet on clowning and several detailed pamphlets on different phases of the profession, including costume and make-up tips, games, treats and prizes, home preparation tactics, clown chatter, and hand puppeteering. To receive the booklet, a Gamma Phi Beta may send a self-addressed stamped envelope to: Be a Clown, P.O. Box 4806C, Modesto, CA 95352.—Talie McKenzie



Sandy Oshel Whittaker (N. Dakota) researched alcohol use by New Guinea natives.

Alumnae

Edited by MARGY WILTAMUTH



Grand Forks, N.D. scholarship winners are Darcie Seboe, Brett Bina and Sandy Reagan.



Evansville Alumnae Chapter charter members are Sarah Lou Ellis Morse (Illinois), Joann Miller Kraemer (Indiana St.), Virginia Bach Keck (Missouri), Lyn Allard Ellis (Illinois) and Henrietta Dies Combs (Northwestern).

Grand Forks, N.D. alumnae honored three outstanding Alpha Beta Chapter (N. Dakota) collegians by awarding them Peg Smith Scholarships. Established in 1963 by the family of Edna Marie "Peg" Mares Smith, the scholarship is given annually to women who have shown high academic achievement, dedication to the Sorority, and campus and community involvement.

Phoenix alumnae tried something new when they had five neighborhood coffees, each with a different hostess. They also tried a progressive dinner, met college-bound seniors at a Panhellenic tea and heard a speaker on child abuse counseling.

Albuquerque alumnae had a cakeless, craftless sale to raise funds. They sent this poem as a come-on:

A bit of news we have today
A cakeless, craftless sale is on the way.
In these busy days, who can bake, make or price?
So the Gamma Phis have thought twice!

You'd be surprised if you counted the cost
Of materials, gas and time you've lost.
So we thought of a plan that's truly grand,
And feel quite sure you'll understand.

We're just asking that you send



Mary Margaret Bates Martin (Kansas) receives her 50-year pin at the Lincoln Founders Day celebration.



Philadelphia North alumnae (above) serenade LaSalle collegians who later entertained with a Gamma Phi Beta game (below).



dinner. Special guest for the event was former Grand President and current Foundation Chairman Ann Mullen Bronsing (Indiana St.), who is a former chapter member.

\$25, \$20 or even \$10.
We'll use the money to further our projects:
Convention, campers, the Hearing Center children, etc.!

Alumnae in St. Louis toured Union Station, a General Motors plant and a quilt shop. They have a Diner's Club that really gets around, meeting at a different restaurant each month for feasting. The Abused Women's Shelter benefited from items they collected and donated.

Evansville, Ind. alumnae celebrated their chapter's 30th anniversary with an alumnae/collegiate

Collegians

Gamma Phi Betas at **Alma** are now charging "admission" to some chapter meetings. Each sister contributes a toiletry article to be included in packets sent to Camp Sechelt.

The annual **Omega** (Iowa St.) winter party given by pledges was "Love, Gamma Phi Style." The theme was carried out with red, white and blue balloons and streamers, as well as fireworks displays.

An aerobics program was started by the chapter at **Northern Arizona** for all sorority members living in the dorm. The class meets twice a week.

Lambda (Washington) contributed \$8,500 to Camp Sechelt from proceeds from its annual dance marathon. Chapters at **Northwestern** and **Wisconsin-Oshkosh** also supported philanthropic projects with successful dance marathons.

California-Riverside members formed a link in the Hands Across America chain as it ran across southern California. They also participated in the Human Race Walkathon.

On a "beautiful, cold, slushy day," **Gamma** (Wisconsin) won third place in the Softball-on-Ice Tournament.

After completing its first year as a reorganized chapter, **Beta Delta** (Michigan St.) boosted its membership to 85 last spring and pledged quota last fall. Two members have been appointed to be co-chairmen of the All-Greek Philanthropy Committee.

Initiation got downright steamy at **Kansas State** when members set up two rented hot tubs for pledges to enjoy on the last hectic day of Inspiration Week. They relaxed, sipped sparkling grape juice from champagne glasses and lavished in the steamy bubbles.

Beta Chi (Wichita St.) held successful fundraisers for muscular dystrophy, Big Brothers/Big Sisters, Diabetes Foundation and UNICEF. The chapter also received the award for "most participation" at the Kidney Foundation Dance Marathon



Sisterhood abounds at the Gamma Chapter (Wisconsin) retreat.

and Red Cross Blood Drive. To help promote scholarship, the "B or Better Club," sponsored by the Mothers Club, recognizes members with above average grades.

Illinois Gamma Phi Betas sponsored their third golf tournament to benefit Camp Sechelt. Collegians teamed up to play along with alumnae, faculty and local residents.

To help celebrate Valentine's Day, Gamma Phis at **Oregon** gathered at the Association for Retarded Citizens of Oregon to help children make and address Valentine cards to send to their families and friends.

Philanthropic efforts at **North Dakota** include donation of a meal to world hunger, sponsoring a child through the Christian Children's Fund and working with Pi Kappa Phi on PUSH (Play Units for the Severely Handicapped).

In response to the all-campus Greek Challenge, **Missouri** members collected the highest amount of donations toward the St. Jude's Radiothon to benefit the fight against cancer in children.

Delta Psi pledges hosted a "Santa's Workshop" Christmas party for **California-Santa Barbara** members, complete with a visit from Santa



Lisa Hooshman and Monique Morris (Cal-Berkeley) sell daffodils to benefit Cal Camp.

himself. Before the party, pledges sang carols at Goleta Valley Hospital to bring the Christmas spirit to the patients.

Gamma Phi Betas and Sigma Chis at **Puget Sound** teamed up to host the Dock Street Party to raise funds for the Children's Home Society. Food was supplied by local restaurants, and local bands played. There were door prizes and an auction, as well as boat tours of Puget Sound.



New initiate Valerie Bayard-de-Volo (San Diego St.) receives congratulations from her sister Lorraine (Cal.-Santa Barbara).



Pledges sing during Inspiration Week at McGill.



The chapter Christmas party is a special event at California State-Fullerton.



Epsilon Gamma (San Diego) members cheer their team at the Homecoming game.



Wisconsin-Oshkosh sisters pose during the Pepsi/Gamma Phi Beta Dance Marathon.



Beta Chi (Wichita St.) collegians sell chocolate kisses at their kissing booth.

Collegians



Texas members Lynne Champagne and Christine Yura share the award for the highest GPA.



Alpha Epsilon sisters attend the initiation party at the University of Arizona.



Alpha Omega (W. Ontario) sisters show their Gamma Phi Beta pride.



Colorado State members participate in an Easter Seals fundraiser.



Delta Theta (Cal. Poly-San Luis Obispo) sisters show their Greek Week spirit.



Bid day brings new members to the University of Oregon chapter.



Wittenberg Gamma Phi Betas placed first in Homecoming float competition.



Jennifer Orme welcomes Becky Marsh to the chapter at Northwestern.



Balloons welcome new members on bid morning at Rutgers.

In Memoriam

ALPHA

Helen Fearon Ginter
Elizabeth Morse Green
Florence Dale Hood
Katharine Wheatley Winter

BETA

*** Orra Spencer Reid
Hermine Haller Smith

GAMMA

Winifred Bodwin Hoagland
Kathleen O'Connell Kramer
Clara Williams Mather

EPSILON

Gwen Heilman Griffin
Mary Lankford Larson

ZETA

Eleanor Collenberg Gunts
Shirley Smith Kearney

ETA

Emily Stubb Mills

THETA

Alice E. Boggs
Reata McDonough Trichka

KAPPA

Frances Louise Bowen Bell
Virginia Ballinger Cox
Ruth Baillie Hosfield
Helen LaDoux Jones

NU

Patricia Sutton DuVal
Jane Cullers Heitkemper
Carolyn Lambreath Simpson
Marion Lyle Veazie
Margaret Carlton Watson

XI

Jeanne Harrington Farr
Mariam Graham Griffin

PI

Janice Marshall Fitzgibbon
Phyllis Mousel King

RHO

Virginia Vliet Dalton
Marion Lyon Schwob

SIGMA

Christine Schermerhorn Munns

PHI

Sarah Kennedy Bruggeman

CHI

Julia Lenore Smith Patterson

PSI

Dorothy Fry Rowley

OMEGA

Annie Still Quade

ALPHA DELTA

Mildred Kendall Spicer

ALPHA EPSILON

Alice Sponagle Wester

ALPHA ZETA

Maxine Kubela Mebane

Orra Spencer Reid

Orra "Bory" Spencer Reid, who was Alumnae Vice President (1960-64) and Grand President (1964-66) died last fall. Initiated at Beta Chapter at the University of Michigan in 1926, she was named to the Honor Roll in 1972 "for 24 years of service on the Philanthropy Board, as Alumnae Vice President, Grand President and Historian, and as one of the first members of the Foundation where her knowledge and interest in philanthropic affairs of the Sorority were of great value."

Her efforts as a member of the Philanthropy Board helped provide scholarships and fellowships for members, and the establishment of the grant-in-aid program. As Grand President, she was a leader in the reorganization of the Sorority, including the incorporation of the Foundation as a separate corporation with a board of trustees. In 1983, Mrs. Reid's daughter Jackie Reid Allee (Michigan) and her husband endowed a scholarship in her name.

"To me Bory exemplified the



Gamma Phi Beta woman," says former Grand President Ann Mullen Bronsing. "She had a rare combination of charm, dignity and warmth that made a big impression on me at the 1962 Convention. That impression stayed with me, and is one of the reasons I became involved in international Gamma Phi Beta."

Mrs. Reid is survived by two other Gamma Phi Beta relatives: daughter Pat Reid McCrea (Syracuse), and grand-daughter Kate Allee Stephany (N. Iowa).

Katheryn Bryant Menger

ALPHA XI

Ruth Coddington Johnson

ALPHA RHO

Elizabeth Dozier Morris
Margaret Gilmore Vines

ALPHA PSI

Lois Nordburg Crook

ALPHA OMEGA

Margaret Bell England

BETA PI

Maryellen Ivy George

DELTA DELTA

Debra Lynn Bahnke Steinriede

*** Honor Roll

The name of Jean Parcels Brock, Delta Chapter, was incorrectly listed in the In Memoriam column in the fall, 1986 issue. Our apologies to Jean and her friends and family for the error.

Proof of death must be submitted to Central Office before a member's name will be listed in the In Memoriam column. A newspaper obituary is preferred, but consideration will be given to a letter from a family member or executor of estate.

Gamma Phi Beta Sorority Directory

Founded November 11, 1874

Founders

Helen M. Dodge Ferguson E. Adeline Curtis
Frances E. Haven Moss Mary A. Bingham Willoughby

The Grand Council

International President: Randall Stevens Guerra (Mrs. F.), 7055 S. Andes Cir., Aurora, CO 80016
Alumnae Vice President: Sally Erikson Lewis (Ms. S.), 535 N. Michigan Ave. #907, Chicago, IL 60611
Collegiate Vice President: Jolene Lessard Stiver (Mrs. K. H.), 15944 Ashville Ln., Granger, IN 46530
Financial Vice President: Joyce Cole Hultgren (Mrs. M. K.), 450 N. Armour, Wichita, KS 67206
NPC Delegate: Karen Gamel Urette (Mrs. M.), 2109 S. Hesperides St., Tampa, FL 33629
Executive Director (Corp. Sec.): Marjory Mills Shupert (Mrs. T.), 7395 E. Orchard Rd. #200, Englewood, CO 80111

Directors

Extension: Karen Wander Kline (Mrs. T. L.), 11819 Laneview, Houston, TX 77070
Services: Phyllis Donaldson Choat (Mrs. N.), 9716 Erskine St., Omaha, NE 68134

Alumnae Department

Alumnae Vice President: Sally Erikson Lewis (Mrs. S.)
Bylaws: Doris Bird Gorden (Mrs. W.), 22 Andrews Rd., Malvern, PA 19355
Alumnae Initiates: Marsha McCollum Schumacher (Mrs. T. L.), 8010 Hidden Trail Ln., Spring, TX 77379
Province Alumnae Directors:
I: Anne Louise Layton (Miss A.), 4626 Patricia Ave., Montreal, Quebec, Canada H4B 1Z1
II: Carolyn Vick Anderson (Mrs. C.), 1625 Connor Dr., Library, PA 15129
III: Patricia Pivonka Wagar (Mrs. P.), 9675 Martinique, Concord, OH 44060
IV: Julie Wheeler Funke (Mrs. J.), 8141 Castle Cove, Indianapolis, IN 46256
V: Gail Gleisner Pludeman (Mrs. J.), 5517 N. Bay Ridge Ave., Whitefish Bay, WI 53217
VI: Cindy Shirley Schultz (Mrs. R.), 1990 Selby Ave., St. Paul, MN 55104
VII: Mary Helen Fisher Griffith (Mrs. J.), 11803 Brookwood Rd., Austin, TX 78750
VIII: Anne Sturgis Phillips Hartje (Mrs. R.), 4579 Corrientes Cir. S., Jacksonville, FL 32217
IX: Clarice Braker Morrison (Mrs. R. J.), 4604 N.W. 32nd St., Oklahoma City, OK 73122
X: Alice Van Horne Huff (Mrs. W. S.), 274 N. Raney, Sikeston, MO 63801
XI: Amanda McCoy Harries (Mrs. J.), 5146 N. 76th Pl., Scottsdale, AZ 85251
XII: Janet Inman Arbuttle (Mrs. P.), 6421 Fox St., West Vancouver, BC, Canada V7W 2C3
XIIIa: Jacki Ennis Falkenroth (Mrs. C. F.), 89 Tumblewood Ct., San Ramon, CA 94583
XIIIb: Linda Brooks (Ms. L.), 2033 Mohawk Dr., Pleasant Hill, CA 94523
XIV: Elizabeth Roessler Griffin (Mrs. R.), 2837 Brook Dr., Falls Church, VA 22042
XV: Sharon Witt Dunham (Mrs. T.), 6411 S. 75th Ave. Cir., Omaha, NE 68127
XVIa: Susan Jacobsen Rose (Mrs. J.), 390 Peralta Ave., Long Beach, CA 90803
XVIb: Barbara Davis McKewen (Mrs. R. W.), 4416 Mt. Herbert Ave., San Diego, CA 92117

Awards: Deborah Foulsham Freisham (Mrs. R.), 838 Glen Rd., Jenkintown, PA 19046

Bylaws (International) Patricia Denton (Ms. P.), 747 Willis, Glen Ellyn, IL 60137

Collegiate Department

Collegiate Vice President: Jolene Lessard Stiver (Mrs. K. H.)
Bylaws: Sue Herzog Johnson (Mrs. D. R.), 5538 McCommas, Dallas, TX 75206
Operations: Frances Rea Griffin (Mrs. D. T.), 830 Warwick Rd., Deerfield, IL 60015
Pledges: Judith Nesbitt Abbott (Ms. J.), 2127 Petaluma, Long Beach, CA 90815
Policies: Connie Lynne Brandon (Ms. C.), 1219 Saxon Dr., Nashville, TN 37215

Central Office
7395 E. Orchard Rd., Suite 200
Englewood, CO 80111
(303) 771-3031

Rush: Kristie Lynn Baack (Miss K.), 2902 Raleigh, Lincoln, NE 68512
Coordinator of State Membership Chairmen: Katherine Daman Garrett (Mrs. W.), 2523 Vista Ave., Olympia, WA 98501
Scholarship: Joanne Callis Roman (Mrs. J.), 7215 Shaftsbury Ave., University City, MO 63130
Province Collegiate Directors:
I: Becky Taube Beeler (Mrs. D.), RFD #4, Hickory Pass, Bedford, NJ 10506
II: Leigh Moylan (Miss L.), 1712 Barrett Dr., Bethlehem, PA 18017
III: Lisa Ann Gravette (Mrs. L.), 2923 C Knoll Ridge Dr., Dayton, OH 45449
IV: Kathy Jo Callahan (Mrs. K.), P.O. Box 85, Alma, MI 48801
V: Karen Joost Henry (Mrs. R.), 21565 Astolat Dr., Brookfield, WI 53005
VI: Maureen Sigler (Miss M.), 2815 S. 17th St. #102, Grand Forks, ND 58201
VII: Sharilyn Carney Griffin (Ms. S.), 17 Stonecreek, Stonewall Dr., Longview, TX 75604
VIII: Sandra Rettke Nauman (Mrs. S.), 136 Great Oaks Ln., Roswell, GA 30075
IX: Ellen Matthews Duncan (Mrs. J.), 902 Meadow Ridge, Clinton, OK 73601
X:
XI: Sharley Wallace Langlee (Mrs. D.), 16984 E. Temple Pl., Aurora, CO 80015
XII: Ann Molenaar (Miss A.), 1108 S.W. 10th Ave., Ontario, OR 97914
XIII: Roxanne Rockwell Bomersine (Mrs. R.), 212 Alicante Ct., Danville, CA 94526
XIV: Debbie Dykes Misiag (Mrs. J.), 903 Bardswell Rd., Cantonville, MD 21228
XV: Diane Thompson (Ms. D.), P.O. Box 246, Eldora, IA 50627
XVIa: Ellen Penne (Ms. E.), 233 S. Barrington #313, Brentwood, CA 90049
XVIb: Patricia Lazos Giese (Mrs. D.), 13882 Mauve Dr., Santa Ana, CA 92705
New Chapter Director: Marilyn Bachnik Callahan (Mrs. L.), 2437 Fairway Dr., Richardson, TX 75080
Collegiate Consultants: Amy Barr, Susie Best, Kendra Gates, Elizabeth Holcomb, Karen Jones, Peggy MacNaughton, Susan Pinkard, Marsha Snow, Linda Thomson

Convention Coordinator: Karen Wander Kline (Mrs. T. L.), 11819 Laneview, Houston, TX 77070
Convention Chairman: Judith Nesbitt Abbott (Ms. J.), 2127 Petaluma, Long Beach, CA 90815

The Crescent

Editor: Kris Brandt Riske (Mrs. P.), 2405 W. Gregg Dr., Chandler, AZ 85224
Alumnae Editor: Margy Molden Wiltamuth (Mrs. R. E.), 1700 Kiva Rd., Silver Spring, MD 20904
Collegiate Editor: Lin Schafer Sanford (Mrs. A.), 969 E. Leeward Ln., Tempe, AZ 85283
Feature Editor: Natalie Meyer McKenzie (Mrs. G.), 531 S. Burton Pl., Arlington Heights, IL 60005
Business Manager: Marjory Mills Shupert (Mrs. T.), Central Office

Financial Department

Financial Vice President: Joyce Cole Hultgren (Mrs. M. K.)
Area Financial Advisors:
Cathy Boudreaux Griffin (Mrs. W.), 340 Plainsboro Rd., Plainsboro, NJ 08536
Kathleen Sage (Ms. K.), 2624 E. Blacklidge, Tucson, AZ 85716
Janette Jones Strickland (Mrs. W.), 5349 Amesbury #513, Dallas, TX 75206
Sherry Crow Adams (Mrs. R.), 910 Smoky Hill Rd., Lincoln, NE 68520
Barbara Novotny Deagle (Mrs. D.), 3189 Heatherside Dr., Dublin, OH 43017
House Corporation Board Bylaws: Donna Arnold Smith (Mrs. V.), 2528 Round Hill Ct., Bloomington, IN 47401
Historian: c/o Gamma Phi Beta Sorority, 7395 E. Orchard Pl. # 200, Englewood, CO 80111

Syracuse University

Leadership Training Coordinator: Camille Cestone (Ms. C.), 1120 N. LaSalle #11G, Chicago, IL 60610

National Panhellenic Conference

National Panhellenic Conference Delegate: Karen Gamel Urette (Mrs. M.)
1st Alternate Delegate: Gloria Swanson Nelson (Mrs. I. P.), 3521 Royal Ln., Dallas, TX 75229
2nd Alternate Delegate: Betty Ahlemeyer Quick (Mrs. J.), 6009 Foxland Dr., Brentwood, TN 37027
3rd Alternate Delegate: Catherine Guthrie Lindauer (Mrs. J.), 5051 S. Beeler, Englewood, CO 80111

Nominating Committee Chairman: Mary Jean Lauvetz Hart (Mrs. E.), 6 Brookside Rd., Philadelphia, PA 19118

Parliamentarian: Jennie K. Curtis (Ms. J.), 6222 Revere, Dallas, TX 75214

Research: Mary Jane Hipp Misthos (Mrs. G. E.), 242 Glendale Rd., Glenview, IL 60025

Rituals: Audrey Weldon Shater (Mrs. C., Jr.), 6808 Rockhill Rd., Kansas City, MO 64131

Services

Director: Phyllis Donaldson Choat (Mrs. N.)
Alumnae Collegiate Relations: Barbara Hurt Simmons (Mrs. J.), 11065 Pinehigh Dr., Alpharetta, GA 30201
Crossroads: Helen Diesner Towle (Mrs. D.), 1871 Orange Tree Ln., Mountain View, CA 94040
Mothers Club: Elizabeth Roessler Griffin (Mrs. J.), 2837 Brook Dr., Falls Church, VA 22042
PACE Committee Chairman: Marjory Letner Jones (Mrs. B.), 1116 Stonewall Jackson Ct., Nashville, TN 37220
Alumnae PACE: Rita Harkins Dickinson (Mrs. R.), 2002 E. Rancho, Phoenix, AZ 85016
Collegiate PACE: Diane Soderstrom Goff (Mrs. R.), 9912 S.W. Conestoga #216, Beaverton, OR 97005
Philanthropy Coordinator: Linda Hallenbeck Pelegrino (Mrs. D.), 2706 Midvale Ave., Los Angeles, CA 90064
SisterLink: Vicki Asprooth Roy (Mrs. J.), 213 W. Fremont, Arlington Heights, IL 60004
TransISter: Barbara Missert Sassaman (Mrs. J. C.), 4842 Hyde Rd., Manlius, NY 13104

Song: Jeannette Doll Kaelin (Mrs. W.), 3012 Del Prado, Alamogordo, NM 88310

Endowment-Loan Board

Directors:
Margaret Godbold Briscoe (Mrs. C. B., Jr.), 4523 Haverleigh Terr., St. Louis, MO 63128
Ms. Emerald L. Erickson (Mrs. E.), 136 Glendale Dr., Ewing, NJ 08618
Leona Davis Drouet (Mrs. R. G.), 10482 E. Grandeur Dr., Baton Rouge, LA 70815
Rebecca Syverson Young (Mrs. G.), 5956 S. Colorow Dr., Morrison, CO 80465
Randall Stevens Guerra (Mrs. F.)
Joyce Cole Hultgren (Mrs. M. K.)
Marjory Mills Shupert (Mrs. T.)

Gamma Phi Beta Foundation

Trustees:
Chairman: Ann Mullen Bronsing (Mrs. R. O.), 31 Chesterton Ln., Chesterfield, MO 63107
Camp Committee Chairman: Judy Graham (Miss J.), 6325 Ravendale, Dallas, TX 75214
Financial Aid Committee Chairman: Sally Ramseyer Beck (Mrs. C.), 13003 Trenton, Olathe, KS 66062
Finance and Investment Committee Chairman: Barbara Endres, 1950-D S. Helena St., Aurora, CO 80013
Fund Raising Committee Chairman: Cathy Guthrie Lindauer (Mrs. J.), 5051 S. Beeler St., Englewood, CO 80111
Grand Council Representative: Randall Stevens Guerra (Mrs. F.)
Public Relations Committee Chairman: Mary Agnes Welsh (Ms. M.), 625 Huntington Commons Unit 312, Mt. Prospect, IL 60056
Secretary-Treasurer: Marjory Mills Shupert (Mrs. T.)

Etcetera

Kimberly Kempf (Nebraska) was invited by Her Majesty's Home Office to attend an international workshop on criminal decision making at Christ's College, Cambridge, England. One of 15 speakers at the conference, she spoke on of-



Kim Kempf (Nebraska)

fense specialization within development of criminal careers. Kimberly earned a Ph.D. at the University of Pennsylvania, where she was coordinator of a research project aimed at improving the bail decision making skills of judges. She is on the faculty at Kent State University.

Linda Paula Fleming (Wis.-Platteville) was elected president of the National Association of Accountants group in Madison, Wis. She is director of treasury finance services at Rayovac Corporation.

Leita Twining Slayton (Iowa St.) received an award at the Wisconsin Federation of Women's Clubs convention. She was honored for her many years of community service including Eastern Star, the Wednesday Literary Club, the Daughters of the American Revolution, her church, and flood control and conservation. She taught home economics for 40 years and has spent much of her life on her century-old farm.

Atlanta resident Honora Warren



Kim Bolton, Jean Zahringer Burke (Northwestern) and Kim Stanphil get acquainted at a tea hosted by San Diego collegians for local alumnae.



Dorothy Schneider (Wash.-St. Louis) accepts the No Bull Peace Prize from Laurence J. Peter, author of *The Peter Principle*. Awarded annually to honor individuals who work for world peace, Dorothy received the award for her efforts to establish a world peace holiday.

Wimer (Denver) retired from her position as director of admissions at Piedmont Hospital School of Nursing and took up dancing. Since 1984 when she first enrolled in dance class, she has won 67 medals and trophies and has danced in exhibitions in South Carolina, Florida and Georgia. According to Lola Johnson Downs (Birmingham-

Southern), "She amazes everyone who finds out her age—76!"

The mayor of Stillwater, Okla. declared Nov. 23, 1985 as Katherine Condon "Mom" Woods (Oklahoma St.) Day in honor of her 95th birthday. A dinner in her honor was held at the Sigma Alpha Epsilon house at Oklahoma State where she was housemother for 38 years. At her retirement in 1961, she held the distinction of the longest service as a fraternity housemother.

California-Santa Barbara members Daphne Blumin and Kim Eichorn participated in the Capitol Hill Program which gives college students an opportunity to work in government in Washington, D.C.

Judi Johnson, Heather Reed and Andrea Damone sang in a benefit show to raise funds for the Oklahoma City University library. Star of the show was Vic Damone, Andrea's father.

Kathleen Quinn (Miami) received the national scholarship from Broadcast Promotions and Marketing Executives at its convention. Nominated by Miami University, she was required to submit a paper and a promotion project.

Mary Kay Hogan (Iowa St.) was elected president of the Iowa Dietetic Association. She is an assistant professor at Iowa State.

Virginia Lippert (Oklahoma) was awarded the Outstanding Alumna Award by Oklahoma State University Panhellenic. She was Beta Psi Chapter's first advisor and is a member of the Gamma Phi Beta Foundation Financial Aid Committee.

Elizabeth Titus McInnis (Miami) is director of the Los Ninos Education Center of San Diego for children with severe communication and behavior disorders. She has a Ph.D. in clinical psychology from the University of Illinois, and is a member of The Association for the Severely Handicapped, The Council of Exceptional Children and National Society of Autistic Children.

Susan Howard (Texas) who plays Donna Culver on the popular television show "Dallas," was a guest at a formal White House dinner honoring the president of Ecuador. She had supported President Ronald Reagan's reelection campaign.

Nancy Kilzer Dick (Michigan St.) is lieutenant governor of Colorado. A resident of Aspen, Nancy is married to Stephen Barnett, a pediatrician, and has three children. After earning a degree in business administration, she attended the University of Denver School of Law.

Nancy has held numerous public



Nancy Kilzer Dick (Michigan St.)

Lambda Reunion

An August weekend was a special time for 25 members of the Lambda (Washington) class of 1965 who gathered for their 20th reunion. From all over the country they came to the chapter house for a slumber party on Friday and catered dinner and dance on Saturday.

Friday night's party was reminiscent of rush as alumnae gathered around the front door greeting each friend with hugs and tears. The pizza ordered later from the "Ave" helped create a nostalgic feeling as they gathered in the dining room singing sorority songs, and were serenaded by the Theta Chis from next door.

The house looked much the same and they remembered the night the Phi Delta Thetas stole the front door, replacing it with a sign that said "Gamma Phis Are Cold," and the demerits they received for wearing slacks on campus. There were no memories, however, of the beds giving such backaches 20 years before.

Saturday night they were joined by their husbands, many of whom were also old friends. They danced to '60s music and had their pictures taken by the same photographer who had photographed them 20 years before.

All agreed it was a wonderful experience to see their Gamma Phi sisters again. During college they learned, played and grew to-



At their 20th reunion, Lambda alumnae learned the truth of a line from their pledge song: "Friendships here will be everlasting, Gamma Phi Beta for me."

gether, and then went their separate ways. The 20 years were erased as friendships were renewed, and all agreed time had made these Gamma Phi sisters like family.

and political offices, including four years in the Colorado House of Representatives. She was elected lieutenant governor in 1979, and has promoted rational economic development of Colorado's rural resources. She pushes for industry location in rural areas, cultural and trade exchanges both domestic and international, looks out for rural Colorado's needs for health facilities, and encourages citizen participation in state government.

Betty Roessler Griffin (Nebraska), a self-described "water baby," placed ninth in her age group in the National Top Ten 100 yard free style Masters 1985 Long Course meet. Masters Course swimming is for adults, divided by area and age group. Each area submits a list of its top 10 in each group and course, from which national ranking is determined.

Betty dropped out of swimming activities for 15 years, but is com-

Etcetera

peting again partially because of the onset of arthritis. Basically a distance swimmer, she swims in about 10 meets a year, does an annual one-hour competitive swim and participates in a two-mile lake swim each summer. And she's back to teaching and life guarding.

Revealing Betty's swimming age group would be unfair. Let's just say it's not 18 and under and that she graduated from Nebraska in 1952. She sells real estate, is active in the Northern Virginia Alumnae Chapter and serves as International Mothers Club Chairman.

Jo McLelland Garey (Maryland) is president of the Women's Council of Realtors in Richmond, Va. A realtor for only five years, she has a degree in home economics and taught kindergarten and worked for Virginia Electric Power Co. before entering



Jo McLelland Garey (Maryland)

designation from the National Association of Realtors, and as such, plans to teach classes for salesmen who wish to move forward in their careers. She is committed to contributing to her profession and strives to increase political awareness among colleagues and others. She is her precinct's chief elections judge and has agreed to chair a statewide committee to involve real estate salesmen in politics.

Penny Dumm Wilkes (USC) of La Jolla, Cal. uses her communication skills to coordinate many creative endeavors. After serving as editorial coordinator of the *American Journal of Orthodontics* for seven years, Penny started her own communication and consulting business two years ago.



Penny Dumm Wilkes (USC) uses her knowledge of antique carousel horses in this restoration project.

real estate. She was also a Virginia State Capitol hostess and served a two-year term as garden club president. A bad personal real estate ex-

perience spurred her interest in the field.

Jo is the first Virginian to receive the leadership training graduate



Johnna Berry (Alma) and Rachel Gehrke (Lehigh) were roommates while studying in Paris.

Corporation Meetings

Eta Chapter, March 19, 1987, 6:30pm, Chapter House, 2732 Channing Way, Berkeley, Cal.

Beta Alpha Chapter, February 9, 1987, 4:00pm, Chapter House, 737 W. 28th St., Los Angeles, Cal.

Alpha Theta Chapter, April 2, 1987, 6:30pm, 1219 Saxon Dr., Nashville, Tenn.

One of her more creative pursuits as a consultant has been working with an Arizona developer who wanted novel attractions for shopping malls. Her knowledge of antique carousels brought her the challenge of an extended nationwide search for them with two days notice.

A hobby breeder of purebred dogs, Penny promoted her Bifrost Norwegian Elkhounds to top 10 status in the U.S. During this time, she was editor of *The Elkhounder* and columnist for *National Dog* and *Northern Dog News*. Her column, "Tightly Turned Tales," received four national awards from the Dog Writers Association of America.

Penny is currently restoring her own carousel horse, developing a greeting card line, writing a children's book on communication and

is the southern California TransiSter coordinator.

Eileen Otis (Cal.-Berkeley) was Gamma Phi Beta's representative at the pilot program of The LeaderShape Institute. Sponsored by the Alpha Tau Omega Fraternity Foundation, the institute's purpose is to improve young people's knowledge of, and ability to demonstrate, basic leadership skills in daily life.

The program, designed by prominent education and leadership consultants, was structured around a non-traditional process which deals with self-awareness and self-assessment, interpersonal communication, group dynamics and decision making, ethics and power, social awareness, and responsible service.

Eileen is a senior majoring in political theory, and Eta Chapter rush chairman.



Eileen Otis (Cal.-Berkeley)

NEW! — Removable Pin-On Ring and Pendant

Pinning your badge into our ring or pendant is as easy as pinning it onto your blouse.



Sterling Silver
\$44.00

10K Yellow Gold
\$106.00

10K White Gold
\$117.00



Sterling Silver
\$22.00

10K Yellow Gold
\$66.00

10K White Gold
\$77.00

AUTHORIZED JEWELER

- Jewelry ServiCenters On All Campuses
- Free Catalog Available From Pollack
- Badges Ordered Through Executive Office

MAJOR CREDIT CARDS ACCEPTED
ABOVE PRICES DO NOT INCLUDE BADGE
PRICES SUBJECT TO CHANGE

J.O. POLLACK co.

1700 W. IRVING PARK RD.
CHICAGO, ILLINOIS 60613

800-621-1904
312-477-2100 (IL)

An Opportunity



Coming in the spring issue Details about Gamma Phi Beta's exciting Capital Endowment Campaign

CHANGE OF ADDRESS OR NAME REPLY

Members are responsible for all address changes. Allow 4 weeks.

Maiden Name _____ Chapter _____

New name if different from label

Title Last First Middle

Entire new address

Street _____

City _____ State _____ Zip _____

Check here if change of address is for other than addressee.

PLEASE DO NOT REMOVE OLD LABEL

Clip form, place in stamped envelope and mail to Gamma Phi Beta Sorority, 7395 E. Orchard Rd., STE. 200, Englewood, CO 80111-2509