



ANIMAL SPECIES:

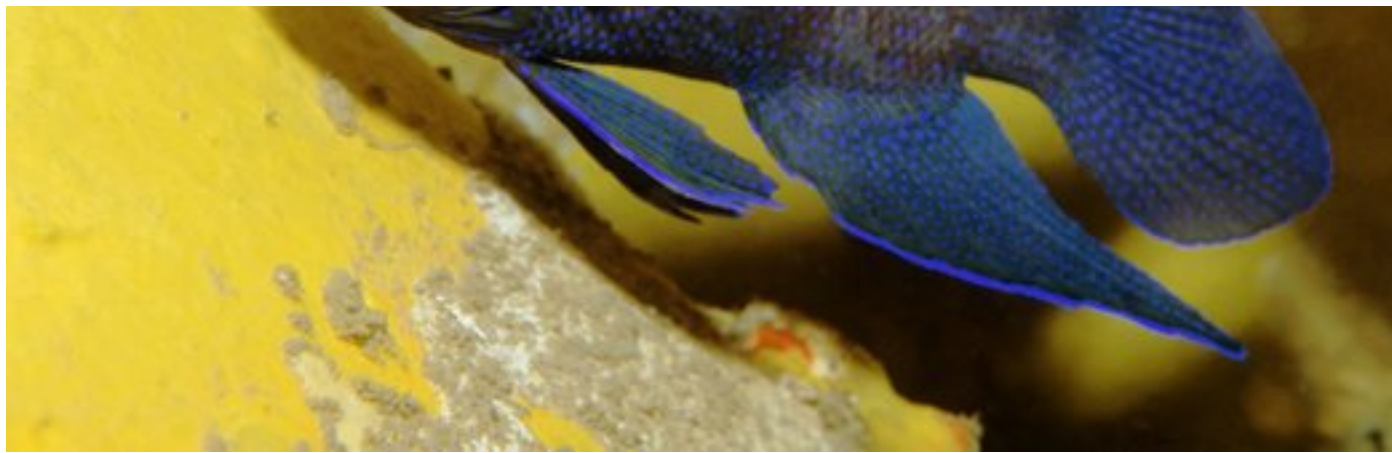
## Southern Blue Devil, *Paraplesiops meleagris* (Peters, 1869)

The Southern Blue Devil is a cave dwelling fish, found along the southern Australian coastline.



### Related items

-  [Find a fish](#)
-  [Fishes](#)
-  [Alison's Blue Devil, \*Paraplesiops alisonae\*](#)
-  [Eastern Blue Devil, \*Paraplesiops bleekeri\* \(Günther, 1861\)](#)



A Southern Blue Devil at the wreck of the HMAS Swan  
Photographer: Erik Schlögl © Erik Schlögl

## Standard Common Name

Southern Blue Devil

## Alternative Name/s

Blue Devilfish, Bluedevil, Western Blue Devil

## Identification

The Southern Blue Devil can be recognised by the bright blue spots on its dark blue/brown body, and large anal and pelvic fins.

## Size range

It grows to about 35 cm.

## Distribution

The species occurs along the southern Australian coastline, from eastern Victoria to the Houtman Abrolhos Islands in south-western Western Australia.

## Related images



Head of a Southern Blue Devil at the Blowhole [View full size](#)

Photographer:  
Sascha Schulz © Sascha Schulz



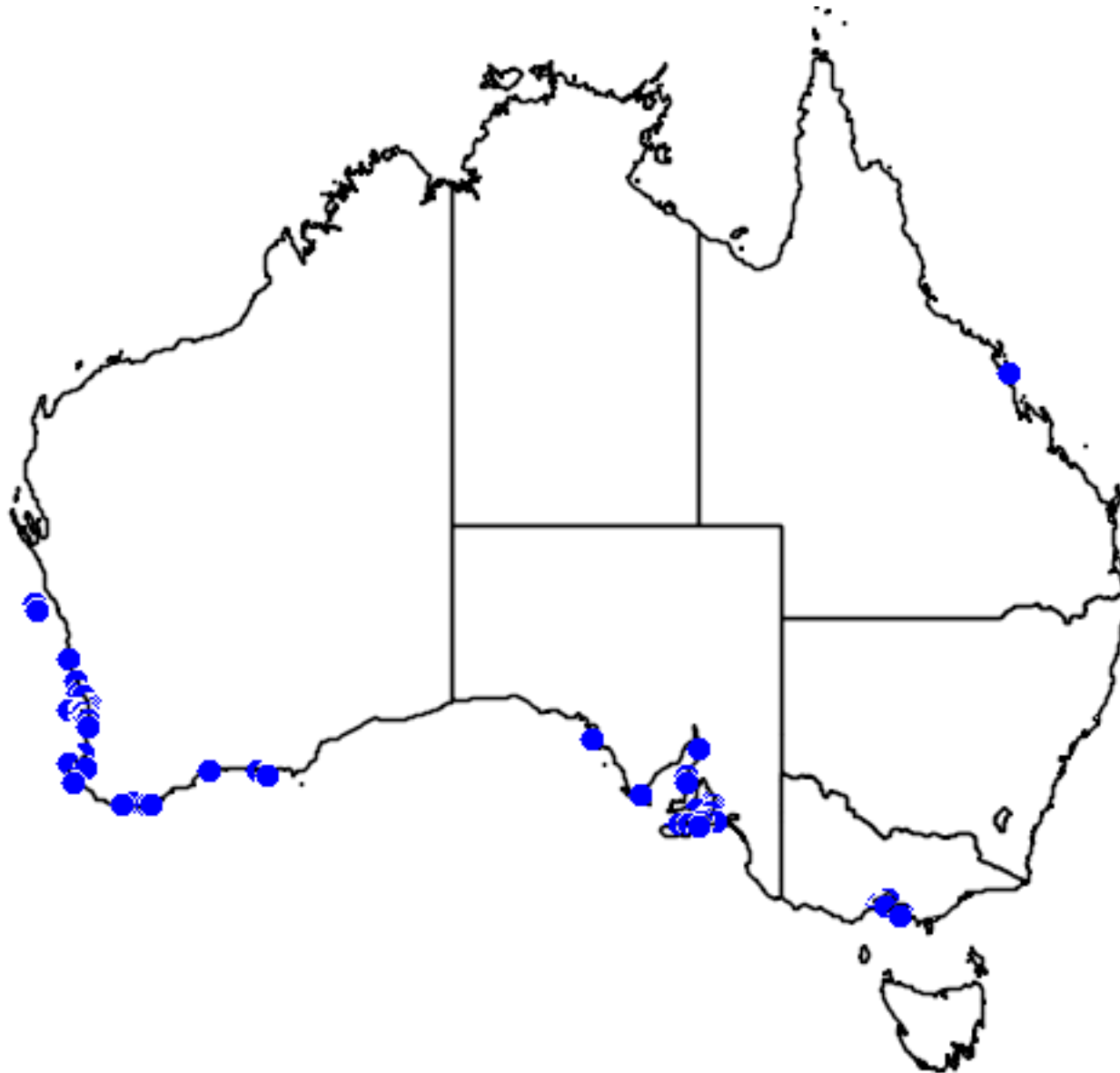
Southern Blue Devil at the Blowhole [View full size](#)

Photographer:  
Sascha Schulz © Sascha Schulz



A juvenile Southern Blue Devil at the

The map below shows the Australian distribution of the species based on public sightings and specimens in Australian Museums. Source: [Atlas of Living Australia](#).



Blowhole [View full size](#)

Photographer:  
Sascha  
Schulz © Sascha  
Schulz



A Southern Blue  
Devil in an aquarium

[View full size](#)

Photographer:  
Barbara  
Harvey © Barbara  
Harvey

## Distribution by collection data

Ozcam map of Southern Blue Devil specimens in the Australian Museums.

WHAT DOES THIS MEAN?

### Habitat

These fish prefers deep cave systems and ledges, which may be inhabited by several individuals ranging from small juveniles to mature adults. They can be found in depths of 3 m to over 40 m.

### Feeding and Diet

The species feeds on fishes and crustaceans.

### Mating and reproduction

Members of the genus *Paraplesiops* lay eggs onto the substrate. These are guarded by the male until hatching.

### Conservation Status

The species is not protected.

### Classification

Species:	<i>meleagris</i>
Genus:	<i>Parapelsiops</i>
Subfamily:	Plesiopinae
Family:	Plesiopidae
Order:	Perciformes
Class:	Actinopterygii



Subphylum: Vertebrata  
Phylum: Chordata  
Kingdom: Animalia

### WHAT DOES THIS MEAN?

## References

1. Gomon, M.F., Bray, D. & R.H. Kuitert (Eds). 2008. The Fishes of Australia's Southern Coast. Reed New Holland. Pp. 928.
2. Hoese, D.F., Bray, D.J., Paxton, J.R. & G.R. Allen. 2006. Fishes. In Beesley, P.L. & A. Wells. (eds) Zoological Catalogue of Australia. Volume 35. ABRS & CSIRO Publishing: Australia. parts 1-3, pages 1-2178.
3. Hutchins, B. & R. Swainston. 1986. Sea Fishes of Southern Australia. Complete Field Guide for Anglers and Divers. Swainston Publishing. Pp. 180.

Mark McGrouther, Collection Manager, Ichthyology

Sascha Schulz

Last Updated: 22 September 2012

Tags fishes, ichthyology, Southern Blue Devil, Paraplesiops meleagris, Plesiopidae, cave, Blue Devilfish, Bluedevil, Western Blue Devil, dots/spots, blue spots, dark body, blue, brown, 30 cm - 1 m, deepsea, marine,



0 Comments

Australian Museum

♥ Recommend

↗ Share



Start the discussion...

Be the first to comment.

✉ Subscribe

Ⓓ Add Disqus to your site

Privacy

Australian Museum  
1 William Street  
Sydney  
NSW 2010 Australia  
(02) 93206000

AM STORE  
CONTACT US  
OPENING HOURS  
ADMISSION  
GETTING HERE

MEDIA CENTRE  
MEMBERSHIP  
VOLUNTEERING  
FOUNDATION  
CAREERS



Site map / Privacy / Copyright / Accessibility / Copyright © Australian Museum 2016 /

