



## hp LaserJet 9000 series

### hp LaserJet 9000/n/dn/mfp

**Unparalleled performance with the flexibility you've always wanted. The HP LaserJet 9000 series is the ultimate versatile, high speed, monochrome network device. It combines speed, ease of use, and flexibility in one product to provide exceptional power and versatility to handle diverse document production needs.**



hp LaserJet 9000 printer



hp LaserJet 9000n printer



hp LaserJet 9000dn printer with optional 2000-sheet feeder



hp LaserJet 9000mfp printer with optional stapler/stacker

**The HP LaserJet 9000 series is one of a new generation of internet enabled devices, offering general office users in demanding workgroup environments outstanding high volume performance from a proven reliable platform.**

- Save valuable time and improve workgroup productivity with 50 pages per minute throughput at highest resolution, ensuring excellent print and copy quality for great looking documents and a fast first page out in less than 8 seconds.
- Experience a new dimension in remote hardcopy management and greatly improve overall productivity, with easy to set up, configurable alerts via e-mail, printer/mfp settings which can be changed remotely, and consumables and support ordered and managed online.
- With its low total cost of ownership the HP LaserJet 9000 series leads in value for money, delivering unmatched performance with more functionality, flexibility and scalability than ever before.

#### **Setting a new performance standard for the general office.**

- Enjoy rapid job processing with a fast 300 MHz processor and standard memory of 64 MB RAM (128 MB RAM and 5.1 GB hard disk standard with the mfp), so even complex documents print quickly.
- With a duty cycle of up to 300,000 pages per month, the device is designed to exceed the needs of most demanding business environments.

#### **Utilise the full potential of the internet.**

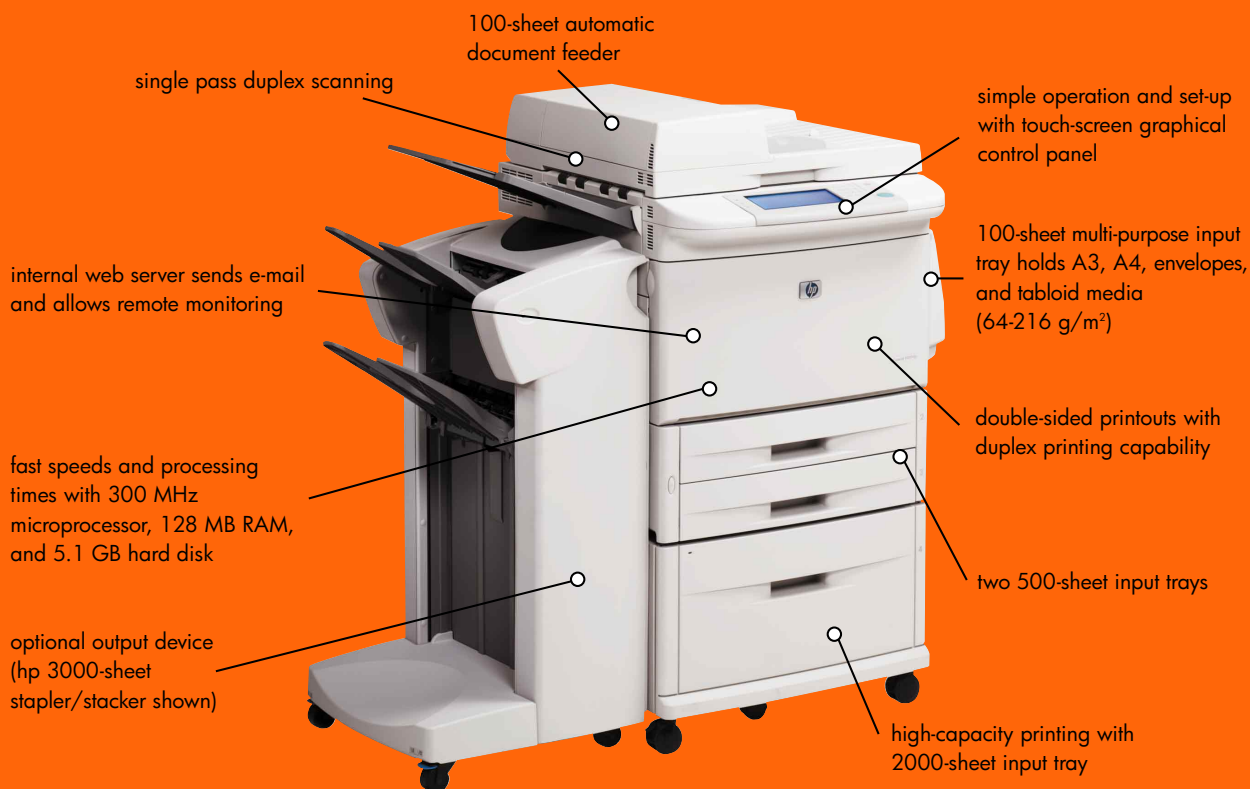
- Remote management with the HP LaserJet 9000 series lets you have full control at the touch of a button. You can easily change any individual device's configuration setting, and monitor the status, so no matter where it is located, you can manage it remotely across the network, via the intranet or internet.
- Use, maintenance and support are easier than ever, with intuitive and very simple installation and configuration, printer driver compatibility, and an improved control panel.
- You have better support with immediate access via the web to extensive self-help information, so you can identify any problems and solve them easily.
- You can set up e-mail alerts configured to specified recipients for more efficient control of supplies and service, and new features and functions can be added in the future.
- You can benefit from new printing e-services using the ChaiVM (embedded virtual machine). This technology also allows you to have tailored solutions developed to make your appliance perform specific business tasks.

#### **A wealth of versatile solutions for workgroup printing in the general office**

- Achieve professional results for complex documents which require finishing, as the HP LaserJet 9000 series supports a wide range of paper handling devices, including a standard 2000-sheet high capacity input tray, an optional 3000-sheet output offset stacker, 3000-sheet stapler/stacker and a multi-function finisher with booklet making functionality (only available for the HP LaserJet 9000mfp).

# hp LaserJet 9000mfp

## high-volume multifunction printer



### standard features

#### • print

Create professional communication with fast, high quality, monochrome laser printing up to 50 ppm (A4) for results you can rely on every time.

#### • copy

Convenient and fast monochrome copying with a speed of up to 50 (A4) pages per minute with straight paper path with a dual-head single pass scanner. You can also reduce or enlarge your copy with page size presets and enhance the image quality.

#### • send to e-mail (out-of-the-box)

Documents can be scanned in colour and black and white, converted to PDF, JPEG and TIFF format and sent as e-mail attachments to individual recipients, or simultaneously to multiple addresses ensuring privacy and saving time and money.

functionality:

- send-to e-mail
- downloading of e-mail address book to the device supported
- auto-configuration: SMTP server (IP address); LDAP address book (IP address)
- keyboard for e-mail address and subject entry
- colour and monochrome scanning
- TIFF, PDF and JPEG file types with smart compression
- sending while printing

### optional features

#### • hp mfp digital sending software v3.0 (c7140a)\*

Provides a variety of alternatives to distribute or store paper documents electronically. This network scanning and document distribution software enables users to send, store or archive colour and black and white documents to multiple locations at a the touch of a button.

functionality:

- centrally manage an address book and up to 512 distribution lists (e.g. e-mail, LANfax)
- send to LAN-fax, Internet-fax, Windows 2000/XP fax service
- send to network folder, archive, application
- pre-settings for regularly used destinations (e.g. 1 touch send to folder, e-mail, fax or distribution list(s))
- security with NT & Novell user authentication

#### • nsi's autostore 2002 (nob8535a)\*

Add to the functionality of the hp digital sending software with 3rd party software such as Nsi's AutoStore 2002: it enables intelligent document capture, processing and routing into most popular applications (Microsoft SharePoint Portal Server, Exchange, Lotus Notes/Domino, Oracle and many others). Document processing features include, Searchable PDF, Document Encryption, OCR supporting 170 languages as well as forms processing. Additional information can be obtained at [www.nsius.com](http://www.nsius.com)

\* Available from June 2002

• **management control**

The HP LaserJet 9000 series incorporates advanced hardware and software features to make device management scalable – from a critical single device to your complete network of connected peripherals.

- hp embedded web server provides direct access to the hp LaserJet 9000 series on the network and allows full control to remotely configure device settings and e-mail alerts, monitor status, and diagnose device problems
- hp web jetadmin enables remote installation, configuration, diagnostics, and proactive management for all your network peripherals from a common web browser
- device problems can be resolved quickly with direct access to targeted self-help information via the web

• **hp jetcaps solutions**

Together with our worldwide network of HP JetCAPs partners we can offer you a full range of carefully selected products and business printing solutions that complement HP LaserJet printers. Products can be mixed, matched and customised to provide you with exactly the printing solution you require. Consulting, implementation services and support are also available.

The range of extended solutions available enables you to achieve huge savings, and accomplish printing tasks more easily.

- e-forms and stationery
- corporate design
- barcodes and cheque printing (OCR and MICR)
- printing from SAP R/3 and ERP packages
- secure printing using Smart cards
- host and volume printing
- cost-controlled printing and copying
- print job accounting
- special industry solutions

Additional information can be obtained from [www.jetcaps.com](http://www.jetcaps.com)

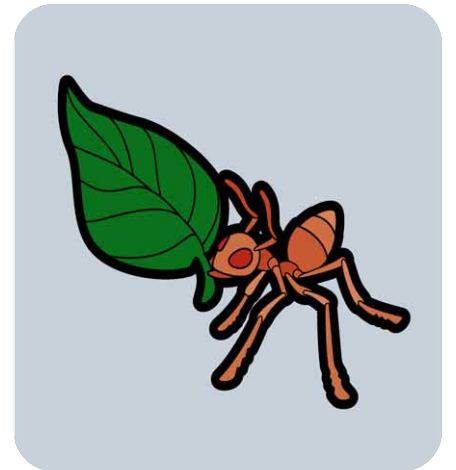
• **hp printadvantage**

By bringing complete transparency to your printing costs, and outsourcing maintenance and support, HP Printadvantage radically improves your business efficiency. It frees up valuable resources for more effective tasks, and means your team can focus on core activities which support your business growth.

HP Printadvantage is a complete package. You procure and manage your printing requirements in one easy transaction. We've streamlined the procurement process, and created a service plan to provide you with the latest print technology, print cartridge, maintenance and first class support. All in one contract, all covered by one monthly invoice. You just turn it on, then turn it up or down as your business requires. Easier for you, better for your business.

Additional information can be obtained from <http://printadvantage.hp.com>

**unparalleled performance with the flexibility you've always wanted**



**paper handling options – hp LaserJet 9000 series**



3000-sheet stacker c8084a



3000-sheet stapler/stacker c8085a



multi-function finisher\* c8088a



multi-purpose tray c8568a



2000-sheet input tray c8531a

\*only available for the HP LaserJet 9000mfp

## technical specifications

<b>print speed</b>	up to 50 ppm (A4), up to 28 ppm (A3)
<b>processor</b>	300 MHz
<b>first page out</b>	less than 8 secs
<b>memory</b>	Standard: HP LaserJet 9000/n/dn printer: 64 MB, HP LaserJet 9000mfp: 128 MB, expandable to 384 MB RAM on 100 pin DIMMS, using Memory Enhancement technology (MEt), memory slots: 2 100-pin DIMM sockets
<b>print</b>	print resolution: Resolution Enhancement technology (REt), HP Fastres 1200, HP Ultraprecise toner print quality: 600 x 600 dpi printer languages: HP PCL 5e, PCL 6, Postscript® level 3 emulation, HP PPL (Printer Job Language), PML (Printer Management Language) typefaces/fonts: 80 scalable TrueType fonts built-in, with 65 additional scaleable typefaces for Windows additional 136 postscript fonts available as DIMM accessory. duty cycle: up to 300,000 pages per month
<b>copy (mfp only)</b>	multiple copies: 999 copies reduce/enlarge: 25 to 400% scan resolution: optical: 600 x 600 dpi RGB data (monochrome and colour) scan speed: colour: up to 24 ppm, black and white text: up to 50 ppm
<b>digital send (mfp only)</b>	advanced features: JPEG scan converted to desired send format, text/mixed/graphic, tiff/m-tiff/pdf/ipeg, colour/black and white
<b>paper handling</b>	HP LaserJet 9000/n/dn printer: Standard: 2 x 500-sheet input trays, optional: 2000-sheet feeder, 100-sheet multi-purpose tray, duplex printing accessory, 3000-sheet stacker, 3000-sheet stapler/stacker, HP LaserJet 9000mfp standard: 2 x 500-sheet input trays, 100-sheet multi-purpose input tray, 2000-sheet feeder, duplex printing accessory. Optional: 3000-sheet stapler/stacker, 3000-sheet stacker, multi-function finisher
<b>media types &amp; weights</b>	Multi-purpose tray: 64 to 216 g/m <sup>2</sup> , other standard input trays: 64 to 199 g/m <sup>2</sup> , standard: A4, B4, B5, A3, A5, custom: HP LaserJet 9000/n/dn printer: 148 x 210 to 297 x 432 mm, 99 to 191 mm (100 sheet multi-purpose input tray), HP LaserJet 9000mfp multi-purpose tray: 99 x 191 mm minimum to 279 x 432 mm or 297 x 432 mm maximum. other input trays: 297 x 450 mm maximum. Paper (plain, pre-printed, letterhead, pre-punched, bond, colour, recycled, rough), transparencies, labels, card stock, user-defined (up to five types)
<b>duplex printing</b>	Two sided printing capability: HP LaserJet 9000/n printer: optional. HP LaserJet 9000dn/mfp: standard. Supported media size: Letter, legal A4, B4, A3, B5, executive (279 x 432 mm maximum)
<b>interface and connectivity</b>	Standard: IEEE 1284-compliant parallel port. HP LaserJet 9000: 3 EIO slots; HP LaserJet 9000n/dn: 2 EIO slots and HP Jetdirect 600n; HP LaserJet 9000mfp: 2 EIO slots and HP Jetdirect 615n. Optional: internal print servers, external print servers, and Jetdirect connectivity card with serial, USB, and LocalTalk connectivity, fast infrared connect. drivers included: HP PCL 5e, HP PCL 6, PostScript® Level 3 emulation
<b>operating system compatibility</b>	Supported: Microsoft® Windows (9X, Me, NT 4. 0, 2000, XP), IBM OS/ 2 version 3.0 or greater (available from the web), Apple Mac OS 7. 5 or greater, Linux (available from the web), AutoCAD
<b>network operating systems compatibility</b>	Supported: Novell NetWare 3.x, 4.x, 5.x, Microsoft® Windows (9x, Me, NT 4. 0, 2000, XP), Apple Mac OS (EtherTalk), Linux (available from the web), Unix® (available from the web)
<b>standard software</b>	Remote hardcopy management, HP resource manager, HP common installer, HP internet installer, HP disk image utility, HP common drivers, HP resource manager for Macintosh, HP common installer for Macintosh, HP internet installer for Macintosh, HP disk image utility for Macintosh, HP common drivers Macintosh client, ppds/pdes for Macintosh, HP LaserJet utility for Macintosh, fonts for Macintosh, help files (English only) for Macintosh, AutoCAD
<b>control panel</b>	HP LaserJet 9000/n/dn printer: three light-emitting diode (LED) indicator lights, eight navigation keys, a 10-key numeric pad, and a 4-line display (20 characters per line). HP LaserJet 9000mfp touch-screen graphical control panel
<b>power requirements</b>	220 to 240 volts (+/- 10%) / 50 Hz (+/- 2 Hz), 100 to 127 volts (+/- 10%) / 50 to 60 Hz (+/- 2 Hz)
<b>power consumption</b>	1140 watts maximum (printing); 440 watts maximum (Standby); 70 watts maximum (Powersave)
<b>dimensions (w x d x h)</b>	HP LaserJet 9000/n/dn printer: 638 x 600 x 633 mm, HP LaserJet 9000mfp 757 x 813 x 1220 mm
<b>product weight</b>	Out of package: HP LaserJet 9000 printer: 63.5 kg, HP LaserJet 9000n printer: 69.4 kg, HP LaserJet 9000dn printer: 76.2 kg, HP LaserJet 9000mfp 138 kg Packaged: HP LaserJet 9000 79 kg, HP LaserJet 9000n printer: 83.1 kg, HP LaserJet 9000dn printer: 89.8 kg, HP LaserJet 9000mfp 181.4 kg
<b>printer management</b>	The HP LaserJet 9000 series supports all advanced printer management features of HP Web Jetadmin. HP Web Jetadmin printer management software provides easy setup, use and management, extensive real-time diagnostics, remote visibility and printer control for any HP LaserJet printer connected via an HP Jetdirect printserver. HP Web Jetadmin provides the industry's most complete, multi-vendor printer management using the standard printer MIB, and supports both TCP/IP and IPX/SPX protocols. HP Web Jetadmin 6.5 is available via www.hp.com/go/webjetadmin SNMP and the industry-standard printer MIB are compliant for network management compatibility. EWS (embedded web server) built in web page for remote printer management.
<b>operating environment</b>	Environmental ranges: operating humidity recommended: 20 to 80% RH, recommended operating temperature: 10 to 32.5°C, storage temperature: 0 to 35° C, storage humidity: 15 to 90% RH, noise level per ISO 9296, sound power: HP LaserJet 9000/n/dn printer: 7.1 B(A), HP LaserJet 9000mfp 7.4 B(A) printing, 5.7 B(A) idle, sound pressure: HP LaserJet 9000/n/dn printer: 59 dB(A), HP LaserJet 9000mfp 57 dB(A) printing, 40 dB(A) idle (operating position); 60 dB(A) printing, 40 dB(A) idle (bystander position)
<b>certifications</b>	Compliant with: USA, FCC rules; Canada, EMC class B requirements; Japan, VCCI statement; Korea, EMI Statement; Finland, laser statement; ENERGY STAR, regulatory standards: Compliant with: USA UL listed to UL 1950: 3rd edition, CDRH approved to 21CFR Ch. 1, Subch. J; Canada CUL certified to CSA 22.2 No. 950:1995; Germany TÜV licensed to EN 60950:1992, EN 60825-1:1993 +A1; EU - Low Voltage Directive, CB Certificate to IEC 60950:1991, +A1, A2, A3, A4; Singapore PSB Approval to IEC 60950:1991; China CCB Approval to GB 4943:1991; Mexico NOM-NYCE Certified to NOM-019-SCFI-1994; Russia GOST licenses to IEC 60950
<b>warranty</b>	1 year on-site standard limited warranty



## ordering information

<b>c8519a</b>	hp LaserJet 9000
<b>c8520a</b>	hp LaserJet 9000n
<b>c8521a</b>	hp LaserJet 9000dn
<b>c8523a</b>	hp LaserJet 9000mfp

### supplies & accessories

<b>q1314a</b>	analog fax accessory†
<b>c8084a</b>	3000-sheet stacker
<b>c8085a</b>	3000-sheet stapler/stacker
<b>c8531a</b>	2000-sheet input tray
<b>c8568a</b>	hp LaserJet 9000 multi-purpose tray
<b>c8088a</b>	multi-function finisher†
<b>c7140a</b>	hp mfp digital sending software v3.0*
<b>nob8535a</b>	nsi autostore 2002 (works with hp mfp digital sending software v3.0 only)
<b>c8532a</b>	automatic duplex unit
<b>j6054a</b>	hp EIO disk drive – 5 GB
<b>c9152a</b>	printer maintenance kit, 110V units (350,000 pages)
<b>c9153a</b>	printer maintenance kit, 220V units (350,000 pages)
<b>c8543x</b>	hp LaserJet smart print cartridge (30,000 pages)
<b>c8091a</b>	hp staple cartridge, 5000 staples for the stapler/stacker
<b>c8092a</b>	hp 5000 staples cartridge for multi-function finisher
<b>c9147a</b>	16 MB flash DIMM
<b>c7843a</b>	SDRAM DIMMs, 100-pin 16 MB
<b>c7845a</b>	SDRAM DIMMs, 100-pin 32 MB
<b>q1887a</b>	SDRAM DIMMs, 100-pin 64 MB
<b>c9121a</b>	SDRAM DIMMs, 100-pin 128 MB

### service & support

<b>h7599a</b>	next day on-site response, 1.8 million pages, valid 3 years**
<b>h7694a</b>	next day on-site response, high volume printing, valid 3 years**
<b>h7603a</b>	on-site response within 4 hours of call, 1.8 million pages, valid 3 years**
<b>h7696a</b>	on-site response within 4 hours of call, high volume printing, valid 3 years**
<b>h7685a</b>	next day on-site response, 1.8 million pages, valid 3 years†
<b>h7700a</b>	next day on-site response, high volume printing, valid 3 years†
<b>h7690a</b>	on-site response within 4 hours of call, 1.8 million pages, valid 3 years†
<b>u2019a</b>	on-site response within 4 hours of call, high volume printing, valid 3 years†

Microsoft, Windows and MS Windows are U.S. registered trademarks of Microsoft Corporation. All other brands and product names are trademarks or registered trademarks of their respective companies. The information contained in this document is subject to change without notice. Hewlett-Packard makes no warranty of any kind with respect to this information. Hewlett-Packard specifically disclaims the implied warranty of merchantability and fitness for a particular purpose. Hewlett-Packard shall not be liable for any direct, indirect, incidental, consequential, or other damage alleged in connection with the furnishing or use of this information.

© Copyright Hewlett-Packard 2002  
Printed in the Netherlands XX/02  
5980-6403EEE

\* Available from June 2002

\*\* HP LaserJet 9000/n/dn only

† HP LaserJet 9000mfp only

For more information contact the Hewlett-Packard internet website at: <http://www.hp.com>

For more information, please call your local HP sales office or representative: **Austria:** 0810/006080 (local rate call), **Azerbaijan:** +7 (99412) 973 561, **Belgium:** (02) 778 34 00, **Luxembourg:** (+352) 263 160 34, **Bulgaria:** (+359) 2960 1940, **CIS:** (007) 095 797 3500, **Croatia and Slovenia:** (+385 1) 60 60 200, **Czech Republic:** (00 420 2) 613 07 111 (Prague), **Denmark:** 45991125, **Dubai (Gulf Region):** (971) 488 15 456, **East Central Europe (Vienna HQ plus Albania):** (+43) 1-250 00, **Estonia:** (+372) 6 505 263, **Finland:** (09) 88721, **France:** (1) 69 82 6060, **Germany:** 0180 532 6222 (0.24 DM per minute), **Greece:** (01) 678 96 00, **Hungary:** (+36) 1 382-1111, **Iceland:** (354) 570 1000, **Ireland:** + 353 1 6158200, **Israel:** (972) 9 952 4848, **Italy:** (02) 92121, **Kazakhstan:** +7 (3272) 980 824, **Morocco (African Region):** (212) 222 21340, **Netherlands:** (020) 5476666, **Norway:** 22 735600, **Poland:** infolinia 0-801 607 607 (0,29 zł + VAT/min), **Portugal:** (808) 206 001, **Romania:** (+401) 250 6197, **RSA:** (271) 11 806 1000, **Russia:** +7 (095) 797 35 00, **Slovakia:** (+421 7) 68 20 90 11, **Spain:** (91) 6311600, **Sweden:** (08) 444 2000, **Switzerland:** 0848 88 44 66, **Turkey:** +90 (216) 579 71 71, **UK:** (0990) 474747, **Ukraine:** 380 44 490 61 20, **Uzbekistan:** +7 (99871) 169 1488, **Yugoslavia:** (+381) 11 627 134, **Multi Country Operations (MCO) (Geneva):** (22) 7804111, **European Headquarters (Geneva):** (22) 7808111.