

Introduction

H264 WebCam

H264 WebCam is a 32-channel h264 remote video surveillance software for Windows. It can capture images at up to 30 fps from IP camera, USB camera, Capture card, TV board, and PTZ control and preset many IP cameras! It can help you to create web page for broadcasting live audio and video stream on Internet. This webcam software has an advanced video motion detection algorithm along with various alert functions including Email, FTP, and sound. It can encode your camera video to H264, XVID and Flash multimedia stream, and this stream can be viewed by Flash player, Quicktime, Realplayer, Windows Media Player, IE or Firefox browser on remote PC, Macintosh, iPhone etc. This ip camera software also has a unique H264 User Name mode to manage dynamic ip address on the Internet, and can host DynDNS domain for you. High quality video and audio effects with low bandwidth needs and recording file formats include ASF, WMV, MP4, MOV, FLV, SWF or AVI. Manual recording is available, along with scheduled recordings as well as motion-triggered recording. JPEG image snapshots can be made from video images along with detailed log files. Other features include secure Login with a valid user ID and password required for network based access and it can automatically restore the network connection if the network link is lost during a monitoring session. This feature rich software combines a digital video recorder and digital video server making it possible to be used as a stand-alone product or the centerpiece for building a powerful surveillance network.

System requirements

H264WebCam supports - Windows 98/Me, Windows 2000/2003/2008, Windows XP, Windows Vista and Windows 7 operating systems!

Equipment requirements are:

1000MHz Intel or AMD CPU

1GB Memory.

Additional Software needed is the **Microsoft DirectX9** which can be downloaded and installed from www.microsoft.com at no charge.

Video Encoding

H264WebCam can be configured to use the following Video Encoding options - H264, H263, H261, XVID, MPEG4, MPEG2, MPEG1, MJPEG, FLV, MSMPEG4, WMV3 etc. The encoding bit-rate can also be set for each of the encoding options.

Audio Encoding

H264WebCam can be configured to use various Audio Encoding formats which include AAC, MP3, and WMA. The encoding bit-rate can be set to 32K, 24K, 16K or 8K.

Recording Format

H264WebCam can be configured to use various video recording formats as well. Some of the supported formats are - AVI, MP4, MOV, FLV, SWF, ASF and WMV.

Supported Device

- 1, USB Cameras which support DirectShow standard.
- 2, TV boards which support DirectShow standard.
- 3, Capture cards which support DirectShow standard. You need to install WDM driver.
- 4, Network IP Camera :

- **01) 4XEM :**
WLPTS, WPTS, WFDI, W45, W90, EVS100,
4X-IP7xxx, 4X-PT71xx, 4X-PZ71xx, 4X-FD71xx, 4X-IZ71xx.
- **02) Abs :**
311M, 312M, 421M, 422M,
4210, 4220.
- **03) Acti :**
TCM-5311, TCM-5312, TCM-4101, TCM-4301, TCD-2500,
ACM-8511, ACM-8201, ACM-8211, ACM-7411, ACM-5711,
ACM-5601, ACM-5611, ACM-5001, ACM-4200, ACM-4201,
ACM-4000, ACM-3511, ACM-3401, ACM-3411, ACM-3311,
ACM-3211, ACM-3001, ACM-3011, ACM-1511, ACM-1431,
ACM-1432, ACM-1311, ACM-1231, ACM-1232, ACM-1011,
ACD-2000Q, ACD-2100, ACD-2200, ACD-2300, ACD-2400,
CAM-7300, CAM-6600, CAM-6500, CAM-5300, CAM-5301,
CAM-5321, CAM-5201, CAM-5221,
SED-2120, SED-2140, SED-2320Q, SED-2610 .
- **04) Airlink101 :**
AICN777W, AICN747(W), AICN500(W), AIC250(W),
AICAP650(W), AICP310 .
- **05) Airlive :**
OD-600HD, OD-325HD, POE-250HD, POE-200HD, POE-260CAM,
WL-2000CAM, WL-2600CAM, WL-1000CAM, WL-1200CAM,
POE-100CAM, POE-200CAM, OC-600(W), OC-800(W), OD-300CAM
- **06) Allnet :**
All2205, All2281, All2282, All2288, All2272, All2298 .
- **07) Apexis :**
APM-J010-WS, APM-J011-WS, APM-J012-WS,
APM-J018-WS, APM-J801-WS, APM-J802-WS, APM-J0233-WS-IR,
APM-J0111-WS, APM-J0118-WS, APM-J601-WS-IR, APM-J602-WS-IR.
- **08) Arecont :**
AV5155, AV3155, AV2155, AV1355, AV8365, AV8185,

AV5105, AV5100, AV3105, AV3100, AV2105, AV2100, AV1305,
AV1300, AV8360, AV8180, AV3130 .

- **09) Asante :**
Voyager I, Voyager II .
- **10) Asoni :**
CAM647, CAM638, CAM636, CAM630, CAM629, CAM628, CAM627, CAM624,
CAM620, CAM619, CAM616, CAM614, CAM613, CAM450, CAM436, CAM435, CAM428, CAM422,
CAM419, CAM417, CAM416, CAM415, CAM413 .
- **11) Astak :**
Mole ip camera .
- **12) Aviosys :**
IP Kamera 9070, IP Kamera 9070-CS, IP Kamera 9070-IR,
IP Kamera 9060 Series .
- **13) Avtech :**
AVI322, AVN204, AVN252, AVN263, AVN212, AVN211,
AVI321, AVI212, AVI203, AVI202, AVI201 .
- **14) Axis :**
205, 206, 206W, 206M, 207, 207W, 207MW, 209FD, 209MFD,
209FD-R, 209MFD-R, 210, 210A, 211, 211A, 211M, 211W, 212PTZ,
212PTZ-V, 213PTZ, 214PTZ, 215PTZ, 216FD, 216FD-V, 216MFD,
216MFD-V, 221, 223M, 225FD, 231D+, 232D+, 233D, 240Q, 241Q, 241QA,
241S, 243SA, 247S, 2100, 2120, 2130, 2400, 2401,
M1011, M1031, M1031-W, M3011, M3014, Q7401, Q1755, Q6032,
P1311, P1343, P1344, P1346, P3301, P3301-V, P3343, P3344, P5534.
- **15) Basler :**
BIP-640c, BIP-750c, BIP-1000c, BIP-1300c, BIP-1600c .
- **16) BlueJay :**
BCN-615C, BCN-615D, BCN-615R, BCN-610, BCN-600, BCN-515(G),
BCN-515P, BCN-512(G), BCN-511, BCN-501, BCN-401, BCN-315(G),
BCN-311, BCN-310, BCN-302(G), BCN-201, BVS-115 .
- **17) Bosch :**
NWC-0455, NWC-0495, NWD-455, NWD-495,
NWC-0700, NWC-0800, NWC-0900, VG4 AutoDome .
- **18) Bsti :**
NC6011(W), PT6011(W), PT100V2W, PD100V2(W), PD100HV2(W) .
- **19) Cannon :**
VB-C60, VB-C50i(R), VB-C50Fi, VB-C50FSi, VB-C10(R), VB-C300 .
- **20) CBC-Ganz :**
ZN-PT304(L), ZN-D2024, ZN-YH305(L), ZN-YM316P, ZV-S306 .
- **21) Cohu :**
3930 serial, 3940 serial, 3960 serial .
- **22) Compro :**
IP540, IP540W, IP530, IP530W .

- **23) Digicom :**
IP Camera 100W, IP Camera 300W, IP Camera 400W .
- **24) D-Link :**
DCS-7110, DCS-6620, DCS-6110, DCS-6111, DCS-5610, DCS-5300,
DCS-5220, DCS-3420, DCS-3415, DCS-3410, DCS-3220, DCS-3110,
DCS-2120, DCS-2121, DCS-2100, DCS-2102, DCS-1110, DCS-1000,
DCS-950, DCS-930L, DCS-920, DCS-910, DCS-900, DVS-301, DCS-104,
DCS-5635, DCS-5605, DCS-N6240, DCS-N5442, DCS-N5440 .
- **25) Dvtel :**
DVT-9520, DVT-9523, DVT-9420.
- **26) EasyN :**
FS-613A-M136, F1-608A-M002, FS-603A-M401,
MS-633A-A126, MS-638A-A112.
- **27) EdiMax :**
IC-1500(Wg), IC-1510(Wg), IC-1520DP(g),
IC-3010(Wg), IC-7000, IC-7000PT(n), IC-7010PTn.
- **28) Encore :**
ENENVCWI-G2, ENVCWI-G, ENVCWI-PTG1 .
- **29) Flexwach :**
FW-1170-VO, FW-1177-DE, FW-1173-DS, -MM, -VI,
FW-3170, FW-3450, FW-3850, FW-1175-DS, -MM, -VI.
- **30) Foscam :**
FI8901, FI8902, FI8903, FI8904, FI8905,
FI8906, FI8907, FI8908, FI8909, FI8918W.
- **31) Fuho :**
IP620 .
- **32) Gadspot :**
GS9711(G), GS9211(W), GS9603, GS9684, GS1600, GS1200(G),
GS1000, GS800, GSN1000, GSN1250.
- **33) Goscam :**
GP-280, GD-2901, GD-2903, GD-2905,
GD-2809, GD-2808, GD-2807, GD-2806, GD-2805.
- **34) Grandtec :**
IP Camera Pro, IP Camera Plus,
IP Camera, IP Video Server.
- **35) Hawking :**
HNC820G, HNC800PTZ, HNC720G, HNC720W, HNC700PT, HNC320G,
HNC320W, HNC300, HNC290G, HNC230G, HNC210, NC200, NC220W.
- **36) Hikvision :**
DS-2CD802P(N)F, DS-2CD812P(N)F, DS-2CD892P(N)F,
DS-2CD832F(-E)(-W), DS-2CD852F(-E)(-W), DS-2CD720F-PT,
DS-2CD862F(-E), DS-2CD852MF-E, DS-2CD752MF-FB(H),
DS-2CD762PF-FB(H) .

- **37) Honeywell :**
ACUIX_IP_PTZ_DOME (HDXA,HDXJ,HDXF,HDXG),
HD4DIPX, HCD554IPX, HCS554IPX.
- **38) Hunt :**
HLC-1NAD, HLC-81AD, HLV-1WAD, HLV-CAD.
- **39) Imagiatek :**
ImagiaTek ip camera.
- **40) Instar :**
IN-3010, IN-3001, IN-2905, IN-2901 .
- **41) Intellinet :**
NFC31, NFC31-WG, NFC31-IR, NBC31-IR, NFC30, NBC30, NFD30, NVS30, NSC15,
550796, 550734, 550710, 550703, 550482, 550468, 550451, 550444,
550437, 550420, 550413, 550406, 550376, 550345, 550338, 550321,
550314, 550307, 550291, 550277, 550260, 550253, 550178,
524421, 503181 .
- **42) Ipx :**
ICS7200, ICS7220, ICS7230, ICS7201, ICS7221, ICS7231, ICS7100,
ICS7120, ICS7130, ICS6600, ICS6000, ICS6010, ICS6020, IYCS8855,
ICS1100, ICS1300, ICS1310, ICS1600, ICS1700, ICS1800, ICS1003, ICS1013,
ICS130A, ICS131A, ICS100A, ICS101A.
- **43) IQinVision :**
IQ802, IQ803, IQ805, IQ811, IQ852, IQ853, IQ855, IQ701, IQ702,
IQ703, IQ705, IQ711, IQ752, IQ753, IQ755, IQ601, IQ510, IQ511,
IQ301, IQ302, IQ303, IQ040SI, IQ041SI, IQ042SI, IQA10, IQA11,
HD1080P, IQA12, IQA13, IQA15, IQA20, IQA21, IQA22, IQA23, IQA25.
- **44) Jvc :**
VN-V686, VN-V685, VN-C655, VN-C625, VN-V225, VN-C215,
VN-C205, VN-V26, VN-V25, VN-C20, VN-C30, VN-X35, VN-X235 .
- **45) Kingwave :**
KW3701, KW3702, KW3715, KW3716, KW3720, KW3730 .
- **46) Kraun :**
KW.08, KW.07, KW.06, KW.05, KW.04,
KW.03, KW.02, KW.01, KW.00 .
- **47) Laser :**
NT-IPC360, NT-IPC360W .
- **48) LevelOne :**
WCS-0030, WCS-2070, WCS-2060, WCS-2040, WCS-2030, WCS-2010,
WCS-1090, WCS-0010, WCS-0020, FCS-1070, FCS-1060, FCS-1040,
FCS-0030, FCS-1030, FCS-1010, FCS-1101, FCS-0010, FCS-0020, FCS-7011,
FCS-5030, FCS-5011, FCS-3021, FCS-3000, FCS-1081(A), FCS-1091 .
- **49) Lichensys :**
LS-7300, LS-7320, LS-7200, LS-7220, LS-6600, LS-6610, LS-6620,
LS-6500, LS-6510, LS-6520, LS-6200, LS-6220, LS-5400, LS-5420,
LS-5300, LS-5320, LS-5320D, LS-5300C, LS-5300D, LS-5200,

LS-5220, LS-5220D, LS-5200HP, LS-3211-E, LS-1430-E, LS-1310,
LS-2600, LS-2610, LS-2400, LS-2300 .

- **50) Linksys :**

PVC2300, WVC2300, WVC210, WVC200, WVC210,
WVC54G, WVC54GC, WVC54GCA, WVC11B.

- **51) Lorex :**

LNE1001, LNE3003, LNZ4001, LNZ9320,
LND7220, LNP5320.

- **52) Lumenera :**

Le575, Le375, Le275, Le259, Le175, Le165, Le11059, Le045, Le075,
Li045, Li175, Li165 .

- **53) Megatec :**

iCAMView PRO, iCAMView Plus.

- **54) Maygion :**

IP603, IP601.

- **55) Micronet :**

SP5520.

- **56) Mobi :**

IP 70042 .

- **57) Robotix :**

M24, M22, M10, M12, M1, D24, D22, D12, Q22, V12 .

- **58) MultiPix :**

MP-HH600, MP-HH500, MP-HH300, MP-HH200,
MP264-500, MP264-400, MP264-308, MP264, HD720-200,
MP2006-200S, MP2006-200C, P2006-600 .

- **59) Mwr :**

C1220HW, C1222HW, C1260HW, C1262HW, C1268SL,
C1212H, C1002RW, C1006RW.

- **60) NorthQ :**

NQ-9007, NQ-9006 .

- **61) Orite :**

IP-200, IC-301, PT-300 .

- **62) Otima-Afreey :**

ANC-606V, ANC-606G, ANC-818V, ANC-818G, ANC-800V,
ANC-800G, ANC-808V, ANC-808G .

- **63) Panasonic :**

BL-C230, BL-C210, BL-C131, BL-C111, BL-C160, BL-C140,
BB-HCM735, BB-HCM715, BB-HCM705, BB-HCM701,
BB-HCM581, BB-HCM580, BB-HCM531, BB-HCM511, BB-HCM547, BB-HCM527, BB-HCM515,
WV-NP472, WV-NP304, WV-NP244, WV-NP1004, WV-NF302,
WV-NF284, WV-NM100, WV-NW484S, WV-NW964,
WV-NS954, WV-NS324, WV-NS202A .

- **64) Pelco :**

IXE20C, IXE20DN, IXS0C, IXS0DN.

- **65) Pixord :**
P-600, P-606(W), P-528, P-523(PoE), P-513(PoE), P-505(W), P-500,
P-465, P-463(T), P-463DW, P-428, P-426(PoE), P-423(PoE), P-400(W/PoE),
P-1500, P-1401(W/PoE), P-4514, P-8504, P-4000, P-1000 .
- **66) Planet :**
ICA-750, ICA-550W, ICA-700, ICA-651, ICA-601, ICA-530,
ICA-525, ICA-510, ICA-501, ICA-350, ICA-312, ICA-310, ICA-230,
ICA-M230, ICA-M220(W), ICA-210W, ICA-151, ICA-150(W),
ICA-120, ICA-110(W), ICA-108(W), ICA-107, IVS-110 .
- **67) Planex :**
CS-WMV02G, CS-W04G.
- **68) Plustek :**
IPcam P1000, IPcam P1100, IPcam P2000.
- **69) Repotec :**
RP-VP0985, RP-VP0971, RP-VP0962, RP-VP0961, RP-VP0921,
RP-WV0985, RP-WV0971, RP-WV0921 .
- **70) Rimax :**
IP Cam 7100, IP Cam 7200.
- **71) Rosewill :**
RXS-3211.
- **72) Samsung :**
SNB-6001, SNB-6000, SNC-B5368, SNC-B5399, SNC-B2335, SNC-B2331,
SNC-570, SNC-550, SND-560, SNC-1300, SCC-C6475P,
SNP-3750, SNP-3300A, SNP-1000A .
- **73) Sanyo :**
VCC-HD2100, VCC-HD2300, VCC-HD2500, VCC-HD4600, VCC-HD5400,
VCC-HD3100, VCC-HD3300, VCC-HD3500, VCC-HD5600, VCC-XZN600P.
- **74) Siemens :**
Gigaset WLAN camera.
- **75) Sitecom :**
LN-406, LN-403, LN-402, WL-401, WL-400 .
- **76) Sony :**
SNC-CH140, SNC-DH140, SNC-RH164, SNC-RH124,
SNC-DF85P, SNC-DF80P, SNC-RS46P, SNC-RS44P, SNC-RS86P, SNC-RS84P,
SNC-RX570, SNC-RX550, SNC-RX530, SNC-RZ50(N), SNC-RZ30, SNC-RZ25, SNC-Z20N,
SNC-CS50, SNC-CS20, SNC-CS11, SNC-CS10, SNC-DS60,
SNC-DS10, SNC-DF80, SNC-DF70, SNC-DF50, SNC-DF40,
SNC-P1, SNC-P5, SNC-M3 .
- **77) Sparklan :**
CAS-810, CAS-811, CAS-812, CAS-820, CAS-821, CAS-861(W),
CAS-633(W), VIS-101 .
- **78) Stardot :**
NetCam, NetCam SC, NetCam XL, Express 6 .

- **79) StarVedia :**
IC202(w), IC212(w), IC502w, IC602, VS316m, VS306 .
- **80) Swann :**
SW211-WIP, SW111-WIP, Max-Ip-Cam .
- **81) Sweex :**
Sweex ip camera .
- **82) Svat :**
CV0204DVR, CV501-16CH DVR .
- **83) Topica :**
TOP-868HMP, TOP-788HMP, TOP-757VPC-MIR, TOP-302HMP, TOP-301HMP, TOP-107HMP,
TOP-656PTZ, TOP-23XIP, TIP-264EZ, TOP-100HVS, TIP-868, TIP-777, TIP-303, TIP-136MP .
- **84) Topsee :**
TS820, TS808, TS805, TS620, TS50,
IP70 .
- **85) Toshiba :**
IK-WD01A, IK-WR01A, IK-WB01A, IK-WB02A, IK-WB02-KIT3-8, IK-WB02-KIT5-50,
IK-WB11A, IK-WB15A, IK-WB21A, IK-WB30A, IK-WB70A .
- **86) Tp-Link :**
TL-SC3000, TL-SC3130(G).
- **87) Trendnet :**
TV-IP600(W), TV-IP522P, TV-IP512WN, TV-IP512P, TV-IP501W, TV-IP501P, TV-IP252P,
TV-IP422(W), TV-IP410(W), TV-IP400(W), TV-IP312(W), TV-IP301(W),
TV-IP212(W), TV-IP201(W), TV-IP200(W), TV-IP110(W), TV-IP100(W) .
- **88) Truen :**
TCAM-570, TCAM-551, TCAM-540,
TCAM-530, TCAM-531, TCAM-6300,
TCAM-370, TCAM-351, TCAM-330 .
- **89) Videoman :**
VMD-900 .
- **90) Vikosmo :**
VK-100IPCam, VK-200IPCam(g), VK-202IPCam(g),
VK-300IPCam(g) .
- **91) Vivotek :**
IP8330, IP8332, IP8161, IP8151, IP7361, IP7330, IP7251,
IP7160, IP7151, IP7152, IP7138, IP7139, IP7142, IP7135, IP7137,
IP7131, IP7132, IP7133, IP7134, IP6112, IP6122, IP6117, IP6127,
IP3112, IP3122, IP3132, IP2112, IP2122, IZ7151,
FD8361, FD8161, FD8133, FD8134, FD7131, FD6112V, FD6122V, FD6111V, FD6121V,
SD7313, SD7323, SD7151, SD6112V, SD6122V,
PT7135, PT7137, PT3112, PT3122, PT3117, PT3127,
PZ7151, PZ7152, PZ6112, PZ6122, PZ6114, PZ6124,
VS8102, VS7100, VS3102, VS3100, VS2403, VS2101 .

- **92) Weichu :**
PTW-980G, PT-970, PT-960, PT-930R, PT-930GR, PT-920R,
ANC-606G, IC-900W, IC-800, IC-200 .
- **93) Y-cam :**
Y-cam Black, Y-cam White, Y-cam Knight .
- **94) Yoko :**
RYK-IP5930, RYK-IP5A30, RYK-IP3900, RYK-IP3800, RYK-IP1800,
RYK-IP2280, RYK-IP1130 .
- **95) Zavio :**
F210A, F312A, F610A, F611e, F721A, D610A, D611E, V111T .
- **96) Zonet :**
ZVC7640, ZVC7640W, ZVC7630, ZVC7630W,
ZVC7611, ZVC7611W, ZVC7610, ZVC7610W .

Recording File Location

The default directory -- TimHO_Rec is created in root of the every disk partition! And can automatically switch to the next partition if this partition is full. And you can enable every partition to record or not ! You can change this record directory name to others! This software can record to hard disk, USB disk and network disk. And can automatically delete the oldest record files when disk is full.

Help File and Log files

These files are stored in the install directory specified during software installation process. Please refer to the installation process for specific naming conventions and path information. If you run this program and press "F1", you can open this help document!

These files are identified as - H264WebCam.chm, etc.

Email and Ftp of Images

When video motion is detected in channels, H264WebCam can be configured to automatically send Email alert pictures or FTP uploading alert pictures.

About the trial

H264WebCam have five versions:

1. Free Version Software.

This version can be freely used except commercial purpose, but only have 4 channels, and have no encode, record functions, and can not be connected from remote functions!

2. Standard Version Software.

This version is not free software, you can try in 21 days for evaluation purposes. It only has 4 channels, and have no web server and stream media server functions!

3. Pro Version Software.

This version is not free software, you can try in 21 days for evaluation purposes. It only have 8 channels can be used, and have no dyndns domain hosting function!

4. Deluxe Version Software.

This version is not free software, you can try in 21 days for evaluation purposes. It have 16 channels can be used, only have no H264 User Name Mode(DDNS) function!

5. Exalted Version Software.

This version is not free software, you can try in 21 days for evaluation purposes. It have 32 channel can be used, and have all function of H264WebCam!

You can view the detailed difference of these five version and buy the optimum version from : <http://www.h264soft.com> .

Credit card ordering and quantity discounts are available in our website. When payment is received you will be sent full version license serial code of H264WebCam, and free to upgrade to new version continually!

Keywords

H264, WebCam, ip camera, network camera, surveillance, motion detection, Domain, Xvid, Mpeg4, DNS, DDNS, FTP, SMTP, video, encode, decode, communication, conference, multimedia, mp3, record, DVR, monitor, client, server, H264 encode, H264 video, video encoder, video chat, network, multicast, broadcast, audio encode, compress, Email.

Contacting

Limitations to Support

We at h264soft.com are happy to help you with any technical problem or questions you may have with our software. However, we cannot help you with issues such as how to program or other issues not related directly to the workings of our software.

Contact Information

We can be contacted through the Timhillone Web site: <http://www.h264soft.com>

Direct Email enquiries can be sent to the Technical Support e-mail address: support@h264soft.com

If you have any questions or comments please feel free to contact us! We look forward to hearing from you!

Registration

Registration

Are you still a trial user? [Order](#) now, it's simple!

What will happen after I place my order online?

The registration code will be sent to you automatically through your Email after your order is confirmed. Your confirmation Email generally arrives with your registration code within 15 minutes after your order is completed.

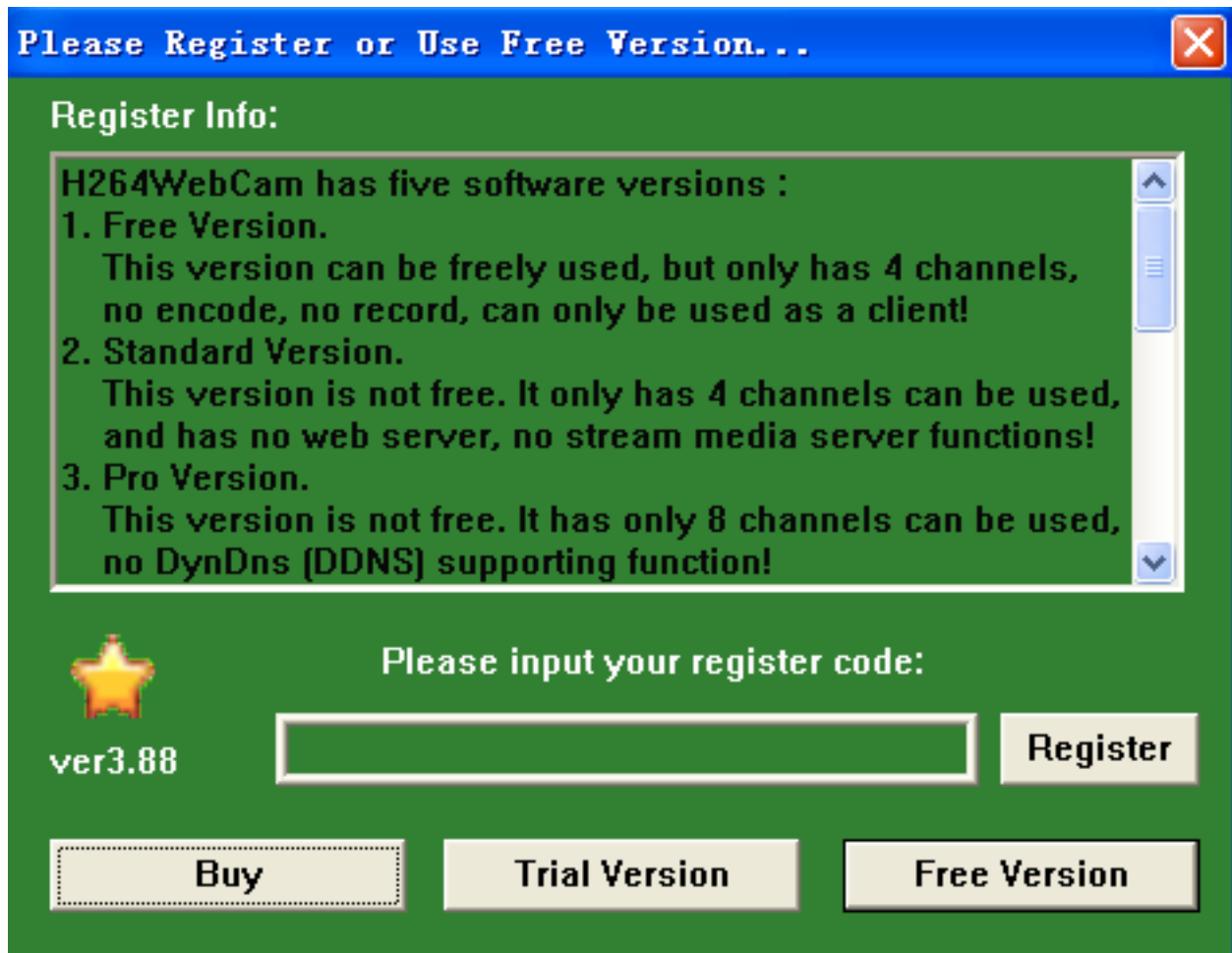
How do I register H264WebCam?

Step 1 - Purchase the software

First and foremost you must purchase the software from our website and have received the confirmation email.

Step 2 - Open the software

Each time you run H264WebCam, if it is still a trial version, the application will pop-up a "Please Register" dialog box, as shown below.



Step 3 - Copy and Paste the Registration Code

Open your email that you received after your order was placed. In this email is your Registration Code. COPY the registration code the registering from the email by highlighting it with your mouse and pressing CTRL+C (or right clicking the highlighted code and selecting Paste from the popup menu). Now PASTE the registration code into the input field (the box in the Please Register window) by clicking in that field/box then press CTRL+V or right click in the field/box and select Paste from the popup menu. You should now see the registration code from your email in the Please Register window.

Step 4 - Accept the Registration Code

Click the "Register" button to accept the registration code and launch the application - that's it!

If you encounter any problems with your registration code please email Technical Support at support@h264soft.com.

User Guide

Overview of the H264 WebCam



When you click the minimize button, in the upper right corner of the main window, the main window will become hidden but will remain monitoring the various configured video feeds.

When you click the maximize button, in the upper right corner of the main window or right click the mouse button over the video feeds, the program will show the video feeds in full screen mode. Simply press the ESC key or click right mouse again and the main console view will be redisplayed.

When you click the close button, in the upper right corner of the main window, the console view window will be closed but the application will remain running. The H264WebCam icon will be visible in the taskbar just to the left of the system clock display.

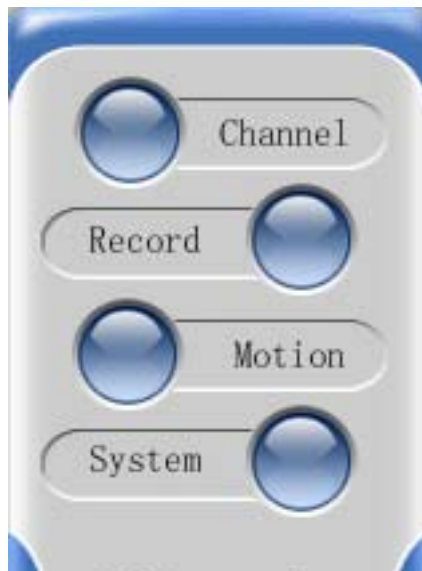
Setting Up

Overview of Setup/Configuration

The four primary sections for setup/configuration of H264 WebCam are:

- Channel
- Record
- Motion
- System

These options can be accessed by clicking on the blue button next to the title of the desired category from the main display window - shown below.



A detailed description, as well as the various steps used throughout these four setup options, is covered in the following sections.

Channel - Setup Options



By clicking the blue button next to the Channel title (shown at the left) you will enter Channel setup dialog window.

This dialog window will provide the options to configure the video and audio sources for all of the available channels. There can be channels from the local computer (directly connected cameras, TV Cards, etc.) or from remotely accessible camera elsewhere on the network.

Channel Setup...

Total Channel Numbers: **04 Channels**

Channel	Status	Config	Details information...
CH01	Active	Local	Video:01 - Integrated Camera, size=320*240, fps=25; Audio:E...
CH02	Active	Net	NetAddr:62.206.38.40, Port:80, ChNo:1, User:, Pass:***, h264...
CH03	Active	Net	NetAddr:203.125.227.73, Port:80, ChNo:1, User:dlink, Pass:***...
CH04	Active	Net	NetAddr:catskill1.viewnetcam.com, Port:5001, ChNo:1, User:, P...

CH03

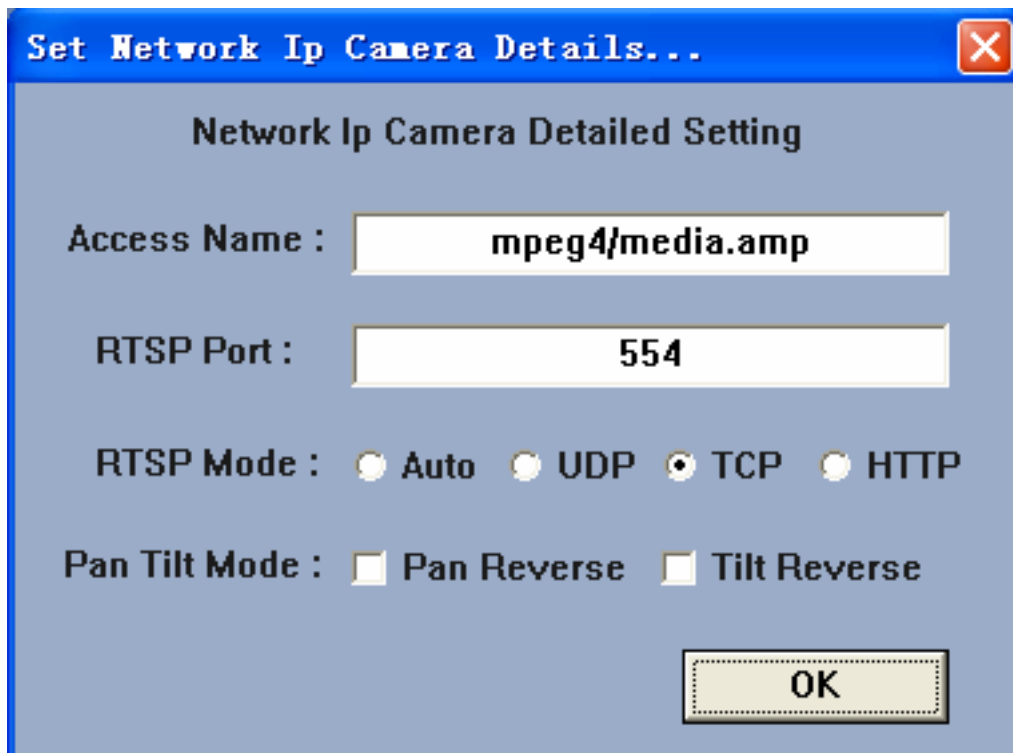
Local Video: **01 - Integrated Camera**
Video Size: **320*240** Frame: **25** SubInput: **No SubInput**
Audio: **Empty Device**

Net Net Address: **203.125.227.73** User Name : **dlink** PassWord : *********
Remote Channel : **1** Web Port : **80** H264 User
 IP Camera Model: **D-Link** **DCS-900,910,920,1000** ...

Our software support many network ip cameras, you can select your ip camera in the following list:



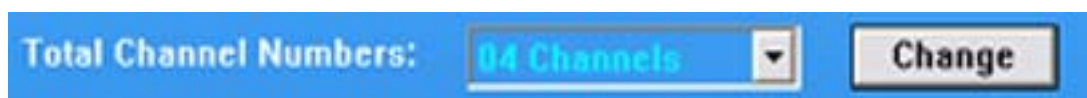
If you need to change the default ip camera setting, you can click “Detail” button which near this ip camera list :



You must check your ip camera 's setting, and assure the rtsp setting is same as up. And assure the rtsp port is right! If you need to reverse the pan tilt function, you can enable the "Pan Reverse" item or "Tilt Reverse" item.

In Channel setting main window, the channel list displays the current running settings or those saved following the last setup. To change a channel's setting follow the steps listed below.

Step 1 - You must be sure to select a Total Number of Channels that is greater than 1. If you want to change the channels number, you need to select the number in list, then click "Change" button to activate it!



Step 2 - Select the particular channel you want to change from the list of available channels.

In the graphic shown below, the selected channel is channel 3. This channel is setup for net, connecting a D-Link ip camera DCS-920. You need to input ip address 203.125.227.73, and the web port of this ip camera 80, fill user name to dlink, password to dlink . Select D-Link ip camera in list, and select DCS-920 item.

Channel	Status	Config	Details information...
CH01	Active	Local	Video:01 - Integrated Camera, size=320*240, fps=25; Audio:E...
CH02	Active	Net	NetAddr:62.206.38.40, Port:80, ChNo:1, User:, Pass:***, h264...
CH03	Active	Net	NetAddr:203.125.227.73, Port:80, ChNo:1, User:dlink, Pass:***...
CH04	Active	Net	NetAddr:catskill1.viewnetcam.com, Port:5001, ChNo:1, User:, P...

Please Note - In this window you can press the “Delete” key on your keyboard or the “Delete Channel” button. Either of these actions will delete the selected channel settings. When you press the “Spacebar” on your keyboard or click the “Change Status” button it will change the selected channel’s status between active and inactive. When a channel’s status is set to inactive, the software will ignore it.

Step3 - Change the settings of one channel

The “Delete Channel” button will delete a channel’s settings and restore this channel to null.
The “Change Status” button will change this channel between an active and inactive status.

Local

If you select the Local option the highlighted channel will be able to capture video from any cameras (or other devices) directly connected to the local computer. Within the Local section you can select the video source, size, frame-rate and audio source. If you have TV card this is where the desired channel selection is made.

Net

If you select the Net option the highlighted channel will connect to a remote network cameras or remote computer that is also running H264WebCam software. The network address must be a dotted decimal IP Address such as 202.96.11.1 , or a domain such as timhillone.dyndns.org. You also can set a pc name that can be resolved through name services (such as DNS) on the local network.. Also you can select “H264 User” and enter a user name such as “timhillone” or “Mike.”

However, you must be sure that you have run our Exalted version at remote, and have host this H264 user name “timhillone” or “Mike” already! This H264 User is designed for people who use dial up to connect to the internet and which in turn causes the IP Address to change frequently. If this H264 User should be valid for remote user connections that are fixed/dedicated like a cable modem or even a T1. Once you input remote user name and password to access the remote program be sure to select the desired remote channel which you wish to monitor.

Step 4 - Save Changes

Save and Exit

Click the **Save and Exit** button to save the changes that have been completed. All channel settings will be saved for all channels, until you make additional changes and click the save button again. If you don't save and just click the Exit button, the software will prompt you to return and perform a save. If you don't want to save the changes your settings, you can select Exit and when prompted to return and perform Save simply select Exit (again) and the software will restore the settings to the state just prior to your entering this dialog window.

Delete Channel

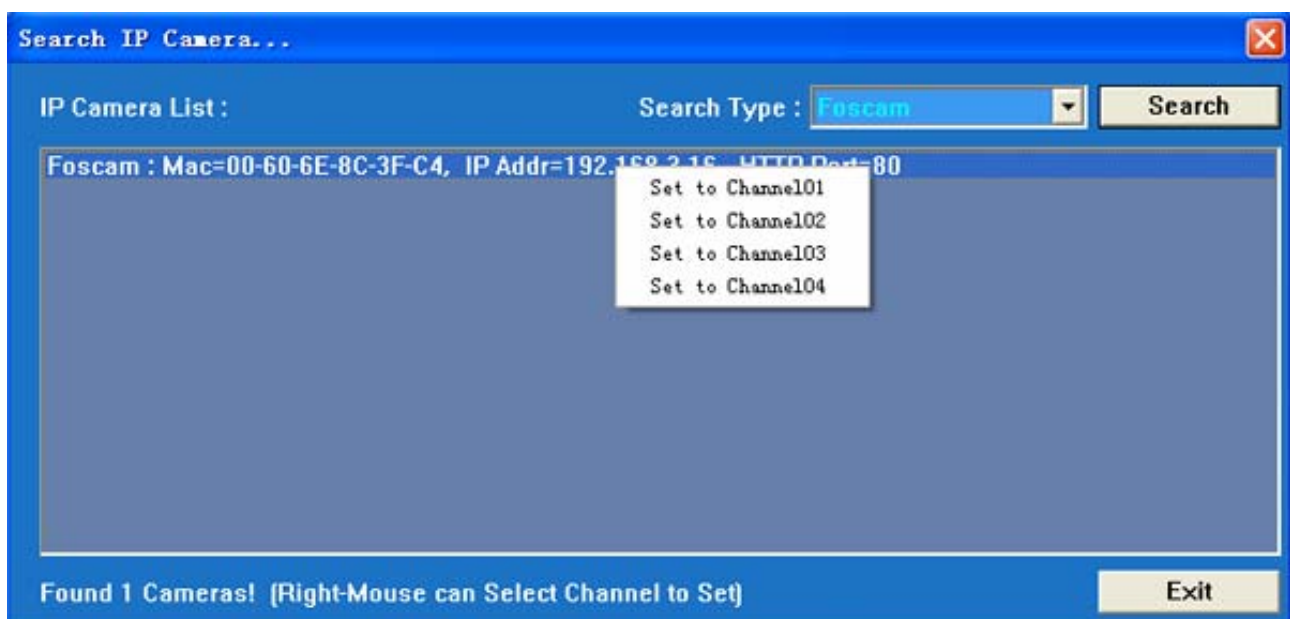
button can delete the settings of selected channel !

Change Status

button can change the status of selected channel, active status or inactive status!

Search IP Camera

button can automatically search all ip cameras in your local network! This button can lead you to the following search dialog:



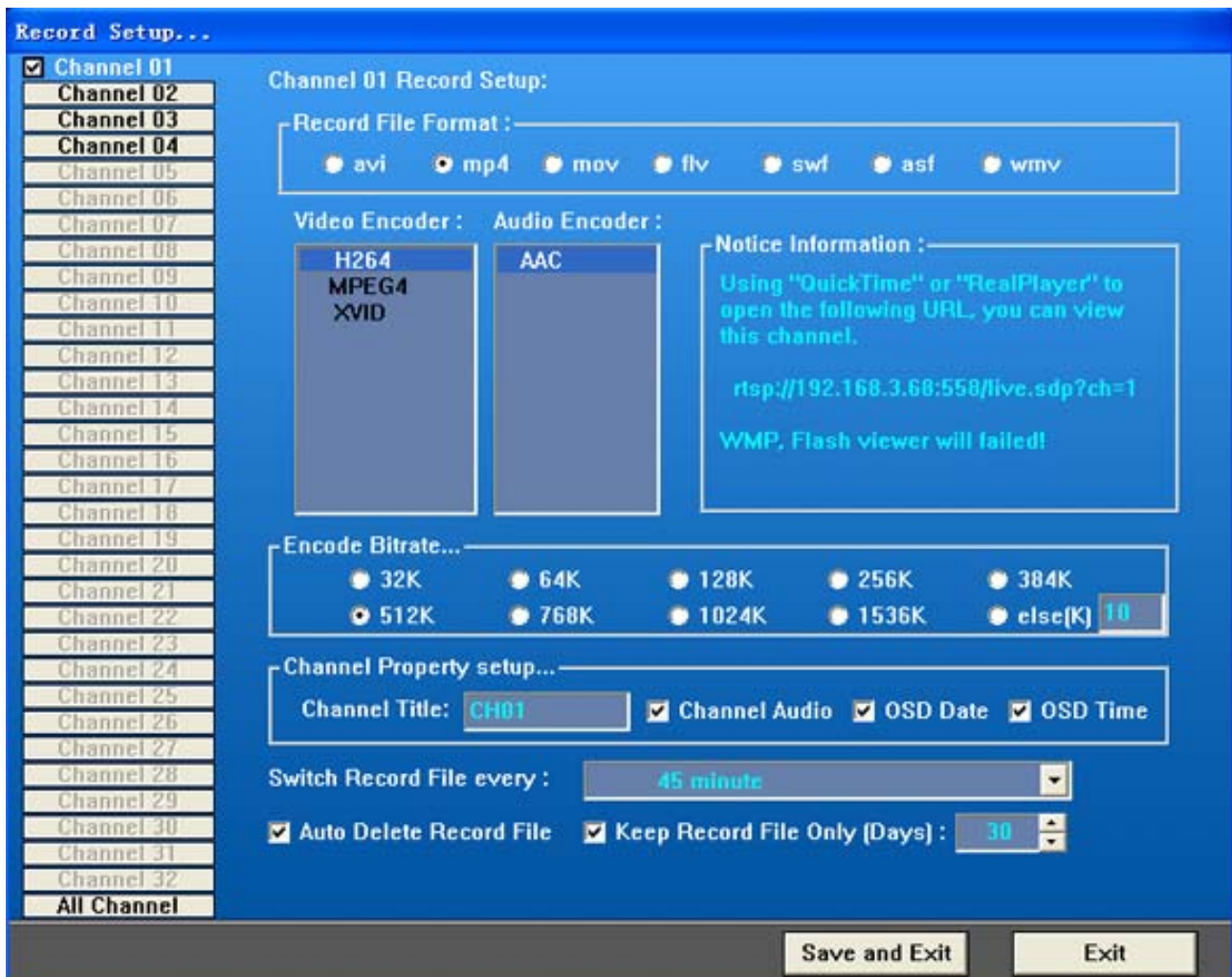
In this dialog, you can select the type of ip cameras, or select “All ip cameras” in list, then click “Search” button, it will automatically display all ip cameras in your local network! Display ip camera type, MAC address, ip address or other information. Then you can right click one ip camera in list, and directly add this ip camera to one channel! Of course you need to set some other information such as user name and password to login this ip camera.

Record - Setup Options




Click the button to enter record setup dialog window.

This window will provide an entrance to setup the video and audio encoder parameter for each available channel.



Step 1 - Select the channel.




Click the  button to select one desired channel. If you select “All Channel” in list, your new settings will be copied to all channels!

Step 2 - Select one record format in list, then change video encode type, audio encode type, bit-rate, and some OSD information! Such as channel title, date osd and time osd.

- a) If you want to record one channel to MP4, MOV files, you can select H264, XVID or Mpeg4 video encoder type along with AAC audio encoder.
- b) If you want to record one channel to FLV, SWF files, you can select H264, FLV1 video encoder type along with MP3 audio encoder.
- c) If you want to record one channel to ASF files, you can select MSMPEG4, WMV3 video encoder and MP3, WMA audio encoder.
- d) If this channel will connect to an ip camera, our software will directly get video stream and audio stream from it. But if it's encoder type can not be compatible with the record type of this channel, our software will re-encode video or audio to an appropriate format, this will cost more cpu resource! AVI file format can hold many encoder, so you can select an appropriate encoder to avoid re-encode video.
- e) To avoid one record file is too long, you can select every 20 minutes to change new record file, or every 45 minutes to switch record file! AVI, MP4, MOV file format need to be close exactly, otherwise all this file can not be played normally!
- f) For all channels, you can change the record format, such as AVI, MP4, FLV etc, but you can not select video encoder and video bitrate for some ip cameras, such as mpeg4 ip camera, H.264 ip cameras! Because our software will directly save the raw video stream getting from the ip camera to record files! Or our software will automatically select a right video encoder for your record format.
- g) The channel record format will influence the remote viewer, such as “Win Media Viewer” need ASF or WMV record format! “QuickTime Viewer” and “RealPlayer Viewer” need MP4 or MOV record format! “Flash Viewer” need FLV or SWF record format! The “ActiveX Viewer” and “Simple Jpeg Viewer” have no relation with the channel record format, so it can view all channel video from remote!

Step 3 - Save Changes



Click the  button to save the changes that have been changed, all channel settings will be saved and take effect at once! If you click “Exit” button directly, software will restore the old settings and don't change anything!

Auto Delete Record File Keep Record File Only (Days) :

Our software can automatically delete the oldest record file when disk is fully! So you can enable this item to automatically delete, and you can set record file days, then our software will automatically delete all the time-out record files! This parameter is a global settings for all channels!

Motion - Setup Options



Click the button to enter the motion detect setup dialog window.

This window will set up 3 function including motion record, scheduled record and scheduled FTP jpeg function. You can setup video motion detection settings, record durations and recording and motion recording schedules each of the available channels. Also available through this window is the configuration settings for the Email and FTP alerting options.



Please Note - The “Set this Channel to Default” button will set this channel to default parameter for motion recording, or scheduled recording. Simply click this button, with the desired channel selected, and it will becomes the channel to default settings. It is that easy!

Step 1 -Select the channel.



Click the desired button to select the channel.

Step 2 - Select the day/week settings



- All day use this setting for every day.
- Mon. use this setting only in Monday.
- Tues use this setting only in Tuesday.
- Wed use this setting only in Wednesday.
- Thurs use this setting only in Thursday.
- Fri use this setting only in Friday.
- Sat. use this setting only in Saturday.
- Sun. use this setting only in Sunday.

Please Note:

- a) When you selected the “Scheduled Recording” checkbox, the schedule record setting will be active for that day. Otherwise it will be ignore for that day. If you selected scheduled record, software will record according to the scheduled time you set.



- b) When you select the “Motion Recording” checkbox the motion recording setting will be active for that day. Otherwise it will be ignore for that selected day.

Step 3 - Select the time-table.




There are two time periods you can define. For example - set a workday from 8:00am to 11:59am and 2:00pm to 6:00pm. This set the record file in two time segments. You need to assure the ending time must > the beginning time! The 8pm->8am is wrong setting!

Step 4 - Set the motion detect parameter




The video can be divided into a 64(8*8) grid style region. You can select(unselect) each region 's status

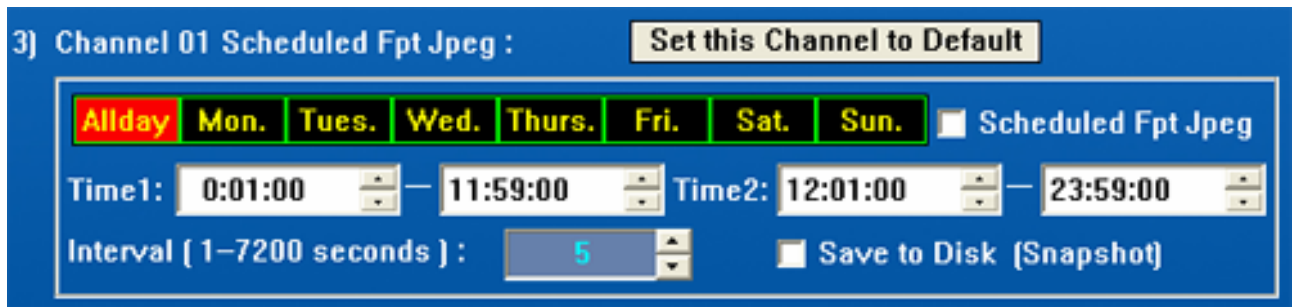
independently. A region is set (or actively monitored) when the diamond icon  is displayed. The software will check this region of the video for motion. You simply click the image directly to activate/deactivate the status of each region.

- a) The Recording Time after Motion is the duration of recording will occur when activated. It is recommended the value be set between 15 and 900 seconds. The Recording Time before Motion is the record time before checked video moving, you can set 20 or 10 seconds more. If you don't need the pre-record function, you can set this parameter to 0, then it will save more cpu resource for encoding!
- b) Motion sensitivity is the video motion grade used during detection. If you set to 0, all video will be regarded as motion status. If you set to 255, then all video will not be regarded as no motion. The recommended value should be set between 3 to 6.
- c) Motion audio alarm activates or deactivates the systems internal speaker to 'Beep' informing you when motion is detected. This setting can be checked/unchecked (on/off) without impacting the actual recording.
- d) The button "Motion Test" is used to test the video motion detection settings. It allows you to test the motion sensitivity value's effectiveness in your particular environment.
- e) The "Run a Program" item means you can select a application program in disk, our software will automatically run this program when video start moving.

Step 5 - Save changes




Click the  button to the changes that have been completed. All channel settings will be saved for all channels, until you make additional changes and click the save button again. If you don't want to save the changes your settings, you can select Exit button, then software will restore the settings to the state just prior to your entering this dialog window.



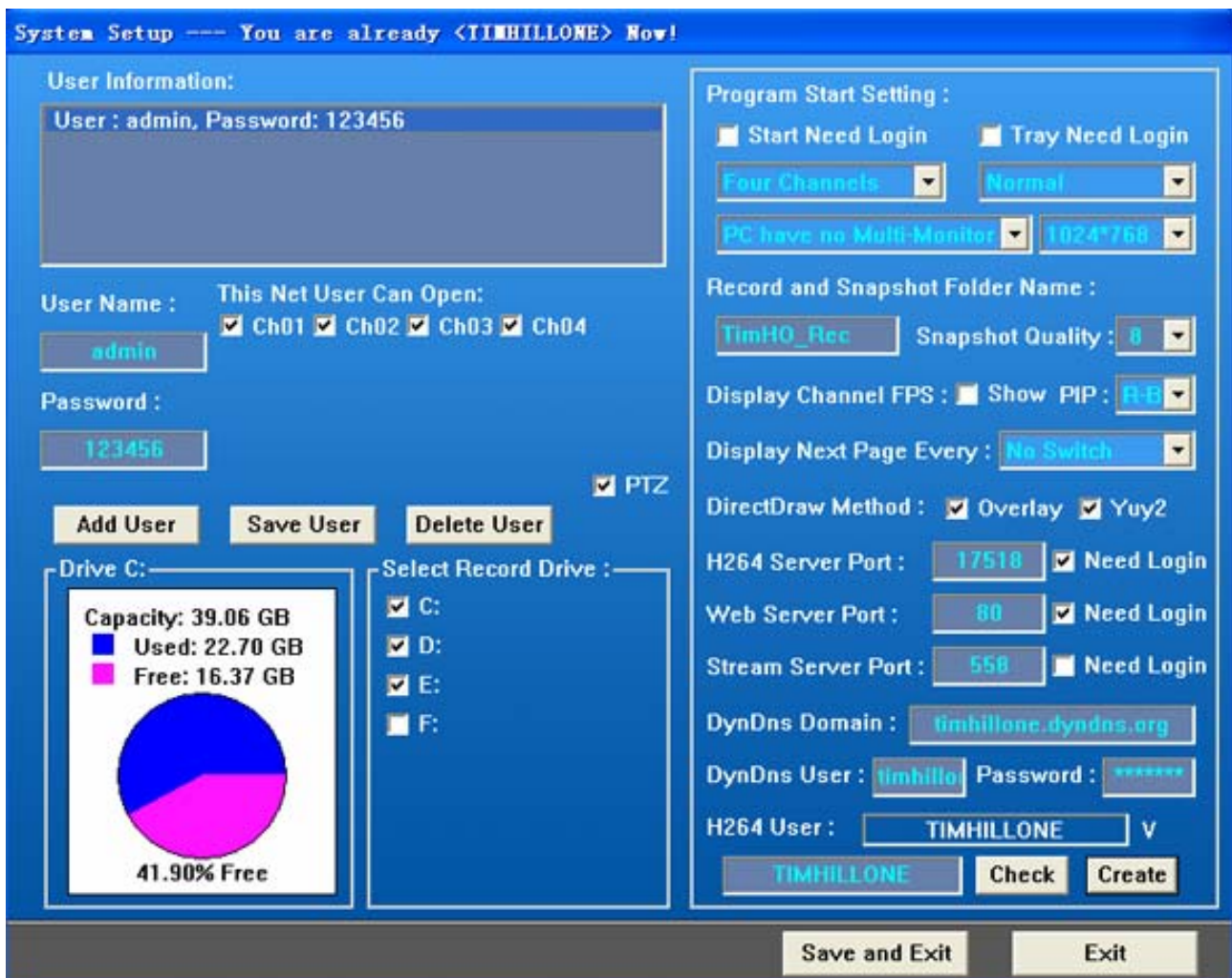
The scheduled FTP jpeg function is for scheduled ftp uploading, so it is not related to video motion function! If you have not set ftp parameter and enabled “Save to Disk” item, our software will scheduled snapshot a jpeg picture and save it to disk for you! You can select automatically ftp upload a jpeg picture to your website every 5 seconds or others. If you enabled “Save to Disk” item, our software will save these jpeg picture to snapshot directory after it ftp uploading.

System - Setup Options



Click the  button to enter the system setup dialog.

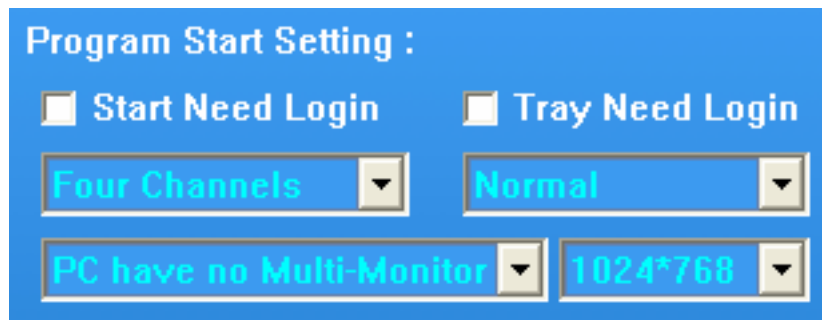
This dialog will enable access to set up the various system parameters including user name and password management. You can also set record disk partition, DirectDraw show type and the H264 User Name.



This dialog's title will show the current record path. (For example: D:\TimHO_Rec).

- a) Login User - All users are listed in the User Information list which displays user name and password. You can input a user name and password and the channel(s) that can opened from a remote connection. To add a users click the "Add User" button to create a new user and simply set the appropriate settings for that user. To change a user's settings click that user from the list and change the desired parameters. Be sure to click the "Save User" button after making the changes after each user to insure the changes will be maintained. To remove a user first click the user from list and then click the "Delete User" button and they will be removed. You can enable or disable one user to view and PTZ control this channel from remote!
- b) Record Drive - This interface will show all hard disk partitions, USB driver and mapped network driver in the computer. You can set a drive to record or not. The program will automatically select the drive to be used and able to receive the recording files. If this drive is full (no space) the program will select another available drive to record. But you need to notice that this software will not delete the oldest record files from network driver! We know the record speed of USB driver is slow than hard driver, so you must assure the recording speed is enough for you. Try and test recording on hard driver at first.
- c) Program Start Settings - You can set some start parameters when software begin to run every time! (1)If you need to login when software starting or exiting, you can enable "Start Need Login" item. (2)If you

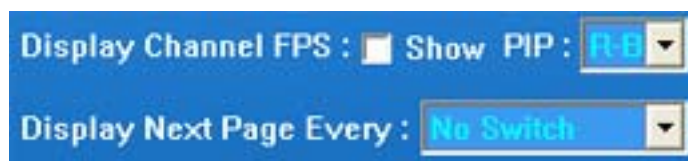
need to login when software restore from tray, you can enable “Tray Need Login” item. (3)You can set the default channels numbers window to display when software starting, such as displaying 1 channel, 2 channels, 4 channels etc. (4)You can set automatically full screen when software starting, or hide to tray when software starting. (5)Our software can support multi-monitor displaying function, so you can moving our software from on monitor to another monitor! And can select which monitor to display when software starting. But the default mode “PC have no Multi-Monitor” can not support multi-monitor, so you need to change this settings at first if you need this function! (6)You can change our software GUI size to your needs! Such as 1024*600, 1280*768, 1280*1024, 1920*1080 etc. So if you have wide-screen monitor, or netbook, you can change this parameter to fit your needs!



- d) Record and Snapshot Folder Name - You can input a name, our software will automatically create a directory using this name to save record files, snapshot jpeg pictures! The default folder name is TimHO_Rec, you can change this name to yours! But you ‘d better to change this name often, because it will affect automatically delete the oldest files function! The snapshot quality item will set the quality of jpeg picture, the minimum quality is 1 and 12 is the maximum. The actual maximum quality may also be limited by the camera being used.



- e) PIP position and automatically switch next page - You can enable “Display Channel FPS” item to display frames per second for each channel. And you can select a position for PIP display, now our software have 4 position to select, such as R-B is right-bottom corner of the window! If you need to automatically switch to next displaying page after several seconds, you can set “Display Next Page Every” item to 5 seconds, or 10 seconds etc. Our software will automatically display next channel video every few seconds! This function is also active for 2, 3, 4, 6, 9, 12, 16, 20, 25, 30 channels displaying window.



- f) DirectDraw Method - When there are problems displaying the video feed you may need to change these settings.

DirectDraw Method : Overlay Yuy2

Due to the many kinds of display cards available it is possible your specific display card doesn't support overlay or yuy2 DirectDraw methods. Please note that changes to these settings will not take effect until you restart the software.

- g) Server Port - Our software have 3 server embedded in it. (1) One is web server, the default port of web server is 80, but you can change this port to others, such as 800, and can set this web server need to login. (2) H264 server is for ActiveX viewer and H264WebCam connecting, the default port is 17518. (3) Stream media server is for RTSP protocol, so you can use Quicktime player or Realplayer, VLC player to view the video of our software! The default port is 558, so rtsp://xx.xx.xx.xx:558/live.sdp?ch=1 url can view channel 1 video.

H264 Server Port : Need Login
Web Server Port : Need Login
Stream Server Port : Need Login

- h) DynDns Domain setting - You can use this function in Trial version, Deluxe version or Exalted version! Please apply a dyndns domain from <http://www.dyndns.com> at first, then you will get a dyndns user name, password and dyndns domain! Then input these information to below, our software can host this domain for you! Then you can use IE browser to visit this domain from internet! But you also need to map tcp port 80, 558, 17518 on your router for your PC which run our Deluxe version software..

DynDns Domain :
DynDns User : Password :

- i) H264 User setting

H264 User : V

After you purchase H264WebCam Exalted version, you can get a registration code. Once you input this code into the startup page, your software will automatically update to the full Exalted version, at which point the H264 User will be active!

To use the H264User first, you must input a name such as “Mike” into the settings (shown above) replacing the “TIMHILLONE” , then click the “Check” button. If this H264 User has not been previously registered you can click the “Create” button to apply the setting. At that point the H264 User Name “Mike” belongs to you. When you start this program every time, this page will show “Mike’s” status with a “√” indicating this H264User is OK. A “X” means this H264User verification has failed. A “?” means the status cannot be determined. This can occur when the system is not connected to the network.

When you have a valid H264 User configured you can tell others and they can access the monitoring system using the H264User name through the internet instead of an IP address.

Email Alert and Ftp Alert - Set-up Options

Email and Ftp Alerts

Click the button in the motion setting up section to enter this interface.

Email and Ftp Alerts Setup

Enable Email Alert

Outgoing Mail Server : Smtp Port Number : SSL

Server Requires Login User Name : Password :

From : To :

Subject :

Message :

Attach image number :

Enable Ftp Alert

Ftp Server : Ftp Port Number :


Server Requires Login User Name : Password :

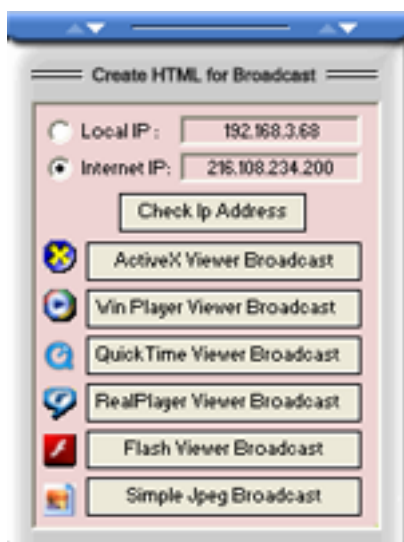
Ftp Directory : Ftp image as : Ftp Gap(second):

User a Proxy Server **Passive Mode**

You can send an email alert when video motion is detected as well as ftp upload a jpeg picture to your ftp site. We recommend using the Test Email and Test FTP buttons to assure all the setting you set is ok! SSL item is for some email address need SSL transferring, such as gmail.com.

Video Broadcast on Internet

Our software have six method to broadcast your camera video on internet! If you click button “Broadcast on internet”  on main interface, you can view the following dialog:



You can view the internet ip address which make your pc to reach internet, select your wanted network to broadcast, and click button: ActiveX viewer Broadcast, Win Player viewer Broadcast, Quick Time Viewer Broadcast, Real Play Viewer Broadcast, Flash viewer Broadcast etc, you can get some files, then copy these file to your website, and add a link to this html web page. If someone click this link on your website, he can view your camera video online! Assure your pc can be reached from internet at first, so mapping tcp port 80, 558, 17518 is needed!

If your H264 WebCam ‘s version is Trial version, Pro version, Deluxe version or Exalted version, our software embedded “Stream Media Server” in it! So you can use many stream player to view our software ‘s real video stream. If you open Quicktime player, or Realplayer from remote, and open RTSP stream : rtsp://xx.xx.xx.xx:554/live.sdp, you can viewed our software ‘s channel 1 ‘s video, same as the channel 2 : rtsp://xx.xx.xx.xx:554/live.sdp?ch=2 ... This can be protected by user name and password.

If your H264 WebCam ‘s version is Trial version, Pro version, Deluxe version or Exalted version, our software embedded “Web Server” in it! So you can use IE browser, Firefox or other internet browser to open our software from remote, you can select ActiveX Viewer, Quicktime Viewer, Realplayer Viewer, Flash Viewer, Jpeg Viewer to view our real-time video and audio. If you use IE browser to open : <http://xx.xx.xx.xx:80/video.jpg>, you can view the picture of our channel 1, same as the channel 2 : <http://xx.xx.xx.xx:80/video.jpg?ch=2> ... This can be

protected by user name and password.

If your internet ip address have changed, these old broadcasting webpage will be invalid. So you need to re-create these broadcasting webpage again. If you use our dyndns domain hosting function, our software can use this dyndns domain to broadcast.

Video Color Adjust



You can use this interface to adjust the video color settings - including brightness, contrast, saturation, hue, or simply click the default button to restore the camera color to default values. Any changes you make will take effect immediately! The software automatically saves your changes so they will be active the next time you use the application.

Camera PTZ Control

Now our software can PTZ control many ip cameras! You can control your camera to pan, tilt and zoom moving, and you can control your camera to move to home position! And zoom in, zoom out function! But all these function need your network cameras to support!



Our software can get the preset list from your ip cameras, so you can save a position to your preset list, and also can call this position by clicking. But this function also need your cameras to support!



You can set our software to automatically call some camera position every 10 seconds! You can set the cycles of total numbers, you can set the call gap parameter, and can set the call camera position list, select some camera positions which you wanted to monitor.



Camera Digital PTZ Function.




You can move the mouse to one channel video at first, then use mouse wheel to zoom in video or zoom out video! And you can use mouse left button to drag video to left, right, or up, down! This function only act on video displaying, don't act on video recording! When you click multi-channel video display button, all channels will lose digital PTZ effect, and restore video displaying to origin !

Keyboard Shortcuts.

There are 7 keyboard shortcuts in H264WebCam software :

- 1) PageUp -- Switch to the prior displaying channel video page, same as the button PageUp.
- 2) PageDown -- Switch to the next displaying channel video page, same as the button PageDown.
- 3) Tab -- Switch the channel video numbers to display, same as the multi-channel video display buttons!
- 4) Left -- Control the PTZ camera pan to left.
- 5) Right -- Control the PTZ camera pan to right.
- 6) Up -- Control the PTZ camera tilt to up.
- 7) Down -- Control the PTZ camera tilt to down.

Manual Record

When you click the  button the channel 01's manual record will start. This button will blink between the  and  colors indicating manual recording has taken effect!



In this above image, channel 01 is in video motion alarm record mode and channel 02 is in schedule record mode. The software will first show the motion record and then show the schedule record and lastly show manual record. If these indicators are not blinking the channel is not recording.



Audio

The software will also listen to the channel which you have selected. When you click video in the video window the focused channel will switch and the new channel's window will show a red borderline, see below.



Mute Audio




When you click the  button you can mute the audio out. The button will show  when muted. Simply click again to un-mute. Our software will save this status of audio mute !





Play Record Files



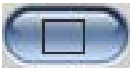
When you click the  button, you can play the record files! This button will lead you to open the current record directory. Because our record file is standard AVI, MP4, MOV, FLV, ASF files, so you can use many media player to play it. Such as Windows Media Player, Quicktime Player, Realplayer, VLC player etc

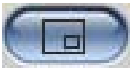
Switch Video Show

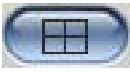
H264WebCam allows you to change the interactive viewing modes between single feeds to various multiple feed modes. You can select 4:3 mode  displaying or 16:9 mode  displaying at first ! Then select 1, 2, 4, 6, 9, 16, 25, 36 channels window to display or 1, 3, 6, 9, 12, 15, 20, 30 channels window to display!

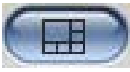
When you select 4:3 mode, the following button will show :

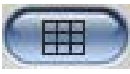


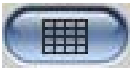
Click  button will show a one channel feed in the window.

Click  button will show two channel feeds in the window with one as PIP(picture in picture) show.

Click  button will show four channel feeds in the window.

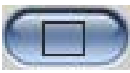
Click  button will show six channel feeds in the window with one video is larger than the others.

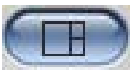
Click  button will show nine channel feeds in the window.

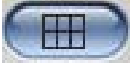
Click  button will show sixteen channel feeds in the window.


When you select 16:9 mode, the following button will show :





Click  button will show a one channel feed in the window.


Click  button will show three channel feeds in the window.


Click  button will show six channel feeds in the window.


Click  button will show nine channel feeds in the window.


Click  button will show twelve channel feeds in the window.

Click  button will show fifteen channel feeds in the window.


Click  button will show twenty channel feeds in the window.

Click  button will show thirty channel feeds in the window.


Click  button will show the next page of video feeds.

Click  button will show previous page of video feeds.


Snapshot Jpeg file

Click the  button to take a snapshot of the currently selected channel's video feed as a jpeg file. This file is saved to the current record directory, and subdirectory: Snapshot. You can click "Play" button to go to this directory directly !

Help File

Click the  **Help** button on the main interface, you can open the help document of this software! So you can get the detailed step of each operation of H264 WebCam.


Import Config File and Export Config File

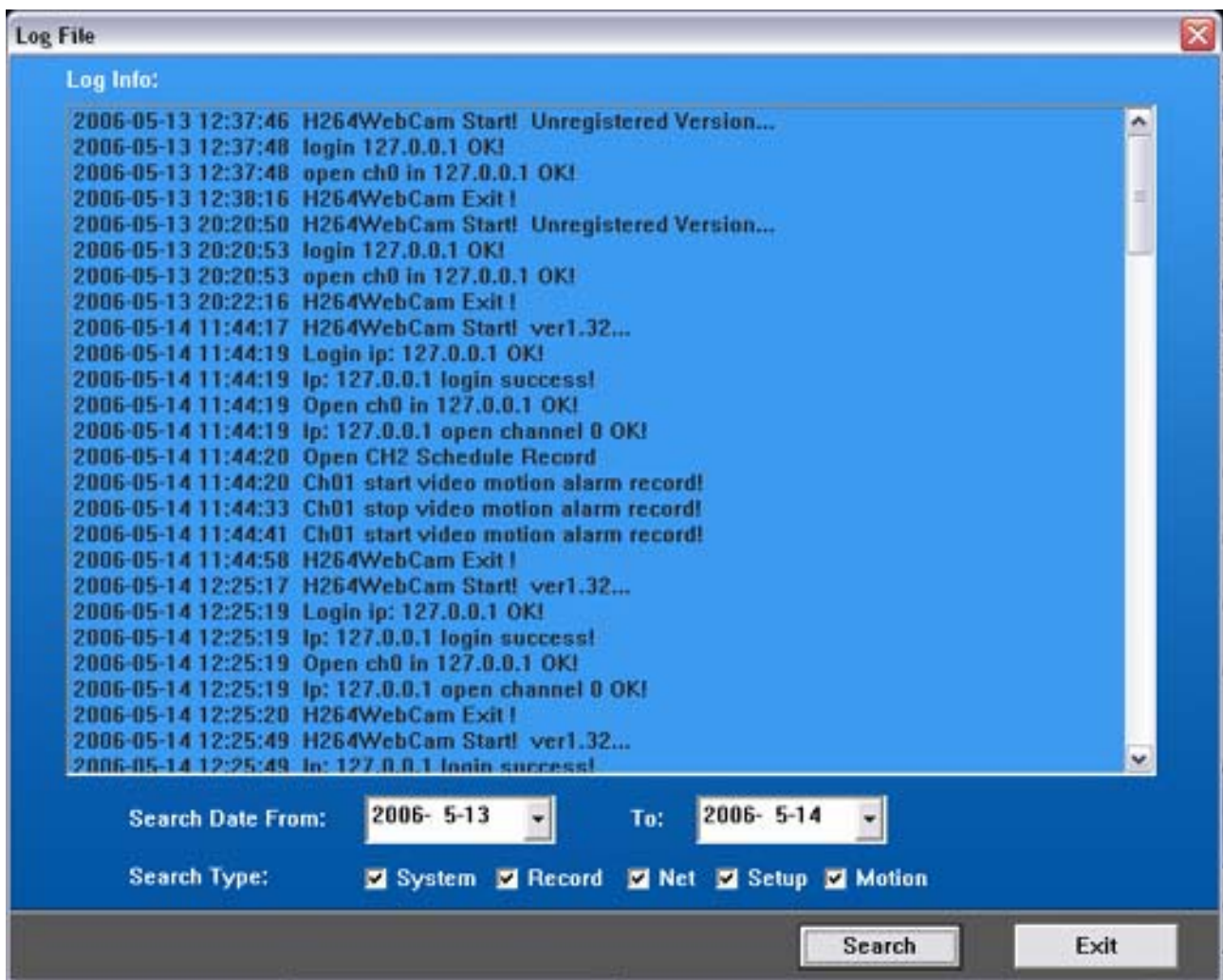
Click the  **Export Settings** button on the main interface, you can view the following dialog :




Button “Export Current Settings To File” can save your current settings of H264 WebCam to a file, so you can upgrade our software to newest, then click “Import Settings From File” button can import your config file to new version.

Log File

Click the  **Log** button on main interface to access the log file, sample shown below.




Adjust TV channel

Click the  button on main interface to access the TV channel adjustment interface.

Exit - Shutting down H264 WebCam

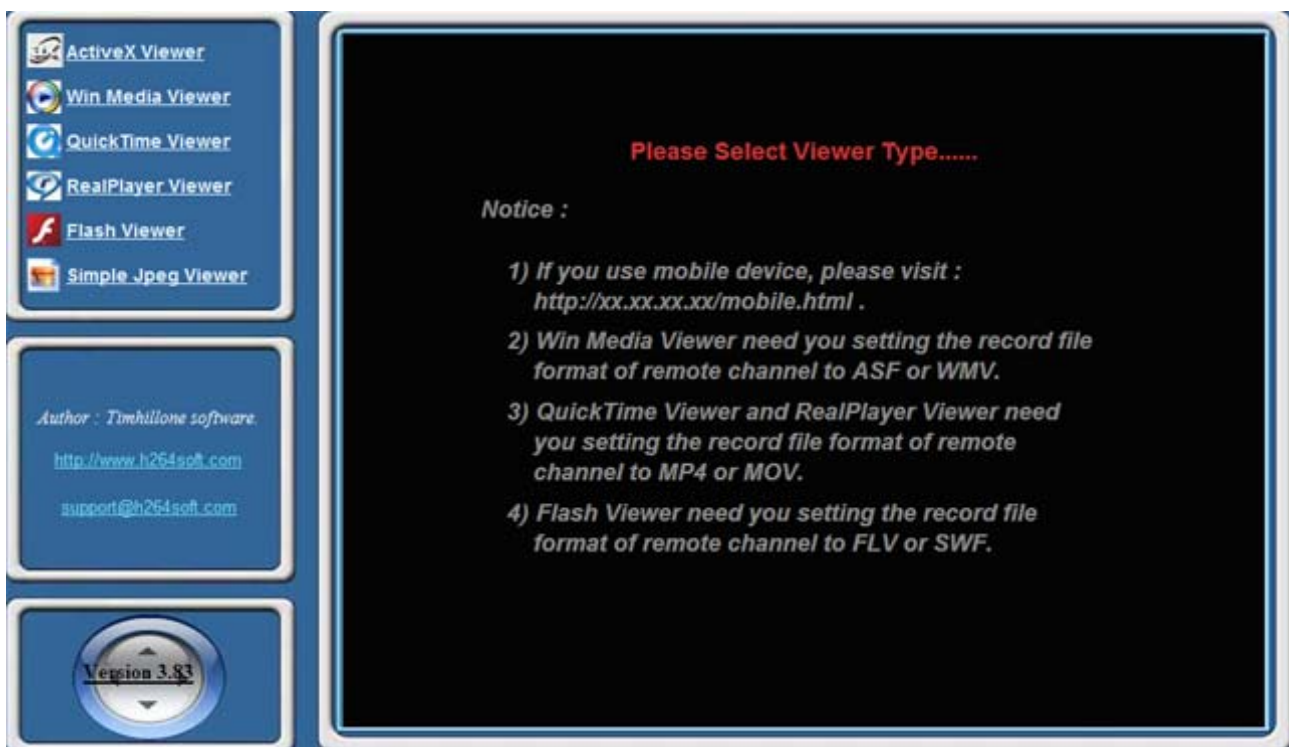


When you click the  button the software will completely shutdown and terminate all monitoring and recording operations.

Web Browser (B/S)

Web Browser (Such as IE6.0, Firefox, Safari, Chrome etc.)

Because H264 WebCam has an embedded web server it is possible use an internet browser, such as IE, to remotely view your webcam! If you run this software in your home (and you know the IP address of your home computer) you can open IE browser from another computer, say in your office, enter the IP address in dotted decimal format (such as <http://56.101.32.68>). When the connection is successful you will see an interface similar to the one shown below:



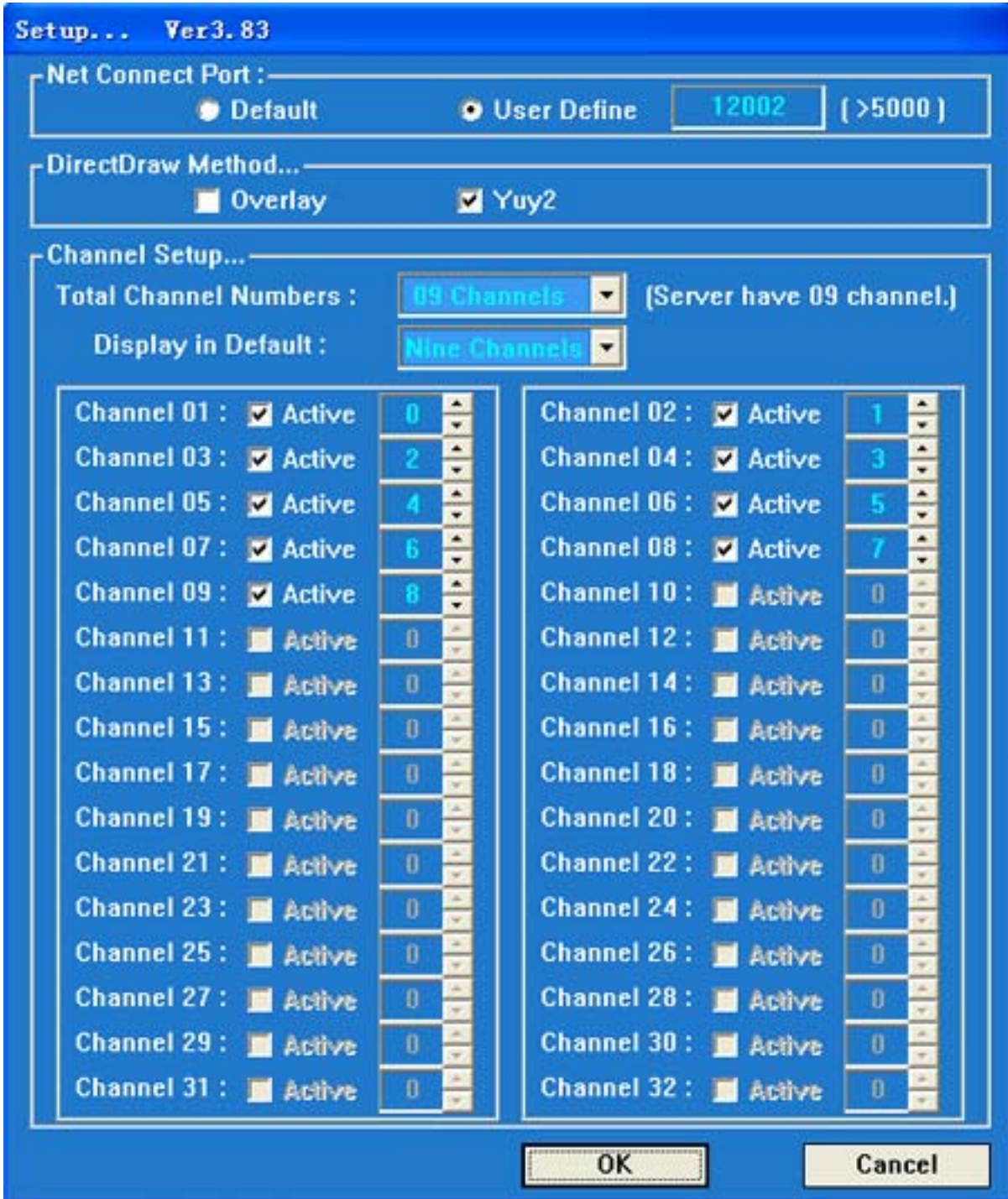
You can select a viewer to display video from these six viewers.

1. ActiveX Viewer.

This viewer can only be used in IE browser! Because it is the Microsoft standard.



If you click “Setup” button, you can view the following setup dialog! You can select how many channels do you need to activate, because some pc have low cpu resource, so it can not view 16 channels at the same time! And you can change port and display mode in this dialog! Our default H264 Server port is 17518, but if you change this port in H264 WebCam system setup dialog, you need change this port in this setup dialog also!



2. Windows Media Player Viewer :



3. QuickTime Player Viewer :



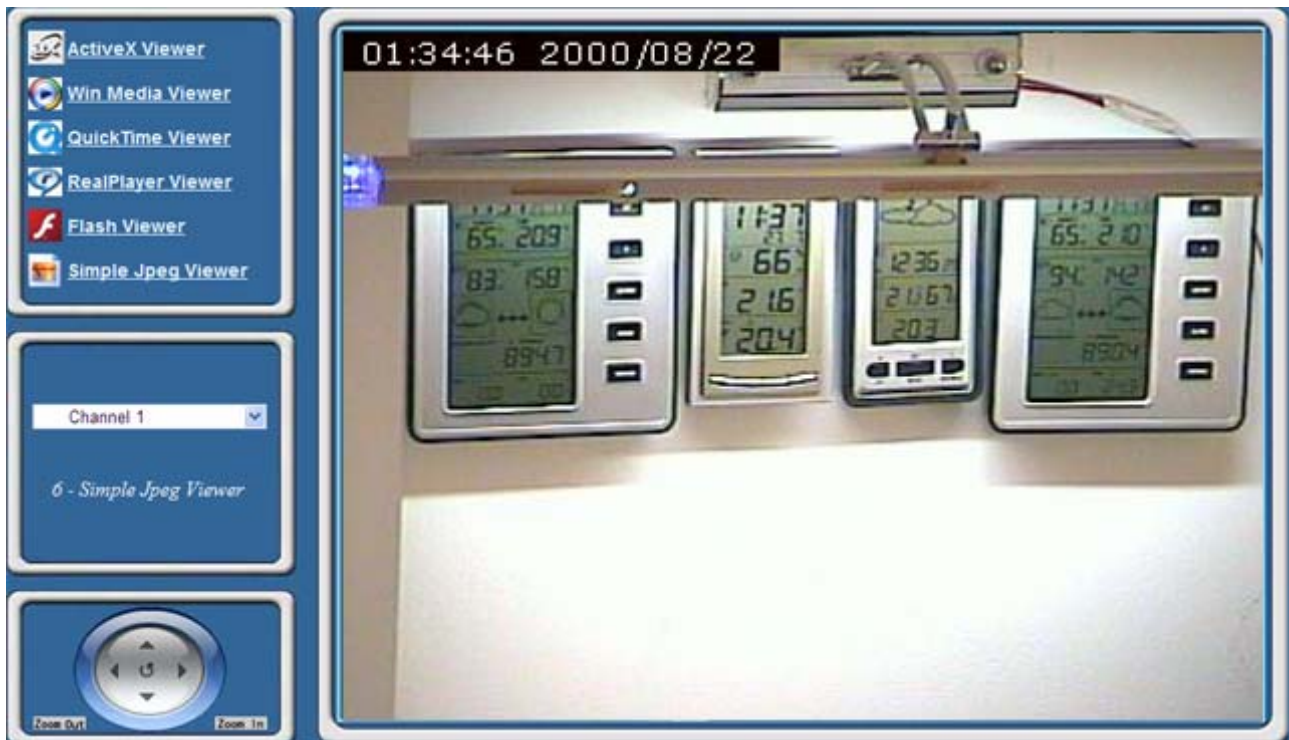
4. RealPlayer Viewer :



5. Flash Player Viewer :



6. Simple Jpeg Viewer :



Enter a valid user name and password to log into the remote software. The default is “admin”, “123456”. After you successfully login you will be able to view remote video feeds. While connected remotely you can also click the “Setup” button and make changes to the monitoring systems display methods or channel setups!

FAQS

1 What standard does H264WebCam take to capture video ?

H264WebCam capture video using DirectShow standard of Microsoft. It can capture H264, Mpeg4, Mjpeg, Jpeg video stream and audio stream from more than 70 kinds of IP cameras!

2 Why I could not start program ? h264 WebCam always show the following dialog : “Timeout, Please Register This Software!”

- a) when you install this ip camera software at the first time, you can install it to a new directory, the default directory is : C:\Timhillone .
- b) If you use this software exceeding 21 days, you must register our software or select “Free Version” to run.

3 Why I could not install this software to default directory : Program Files\Timhillone\H264WebCam ?

If you are XP limited user, or only a standard user, or you using Windows Vista, Win7, you have not right to write file to system directory, you can change our install directory to : Timhillone\H264WebCam, then OK !

4 Where can I view the difference of Deluxe version, Pro, Standard, Free version ?

You can view the detailed difference of our four versions from : (<http://www.h264soft.com/h264webcam.html>)

5 Where can I view the supported IP camera list ?

You can view the supported network camera list from : (<http://www.h264soft.com/supportdev.html>)

6 How can I view the record files ?

The record files is located at ?:\TimHO_Rec\2011_12_21\CH??. you can enable or disable each driver to record or not, including hard disk, USB driver, Net driver etc. Our record file is standard AVI, MP4, MOV, ASF, WMV, FLV, SWF file, so it can be played by many player, such as VLC player, Windows media player, QuickTime player, Real Player etc.

7 Why I could not display my USB camera or analog camera?

- a) You must install the right WDM driver of your camera before running H264WebCam. You can use this program (<http://www.h264soft.com/downloads/amcap.exe>) to test it at first.
- b) if amcap.exe is no problem, you can select one channel 's video window, and restore this channel 's video color to default
(click "Default" button in main interface).
- c) Click "System" button to setup, then disable Overlay and Yuy2 item, save and exit, restart H264 WebCam again, you can display your camera.

8 Why I could not display my IP camera?

- a) You must enable ip camera checkbox, and select the right ip camera model in channel setup dialog!
- b) You must set the right "Net Address", "User Name" and "Password", "Web Port" in channel setup dialog.
- c) If your ip camera need more parameter, you can click "..." button in channel setup dialog, and change "Access Name" or "RTSP Port" or "RTSP Mode" for your network camera.
- d) If you have not found your ip camera model in our camera list, you can select general ip camera, and change some parameters for your ip camera. And you can mail to us for helping also.

9 How can view my camera with Windows media player, Quicktime player, Real player, Flash player, VLC player, IE browser ?

You can start Windows media player, and open url : "http://xx.xx.xx.xx:80/video.asf?CH=1" to view the channel 1 's video.

You can start Flash player, and open url : "http://xx.xx.xx.xx:80/video.flv?CH=1" to view the channel 1 's video.

You can start Quicktime player or Realplayer, and open url : "rtsp://xx.xx.xx.xx:558/live.sdp?CH=1" to view the channel 1 's video.

You can start IE browser, and open url : “<http://xx.xx.xx.xx:80/video.jpg?CH=1>” to view the channel 1 ‘s video.

10 How can I broadcast my camera to internet ?

You can run our trial version, and click “Broadcast on Internet” button, this button is near the button “About Author” , then you can select Win player viewer broadcast, Quicktime viewer broadcast, Realplayer viewer broadcast, Flash viewer broadcast, Simple jpeg broadcast. These button will create some html files, you can copy these files to your website! then visit these web page can view your cameras!

11 Why I could not connect H264 WebCam from remote?

- a) You must input the correct ip address or domain from remote, and maybe you need to input the right user name and password to login.
- b) You must assure our Web server is normally start ! The default web server port is 80, if you have other program to use this port, such as IIS, web server will failed to start! You can change our web server port to 800 or others! use <http://xx.xx.xx.xx:800> to visit.
- c) You must assure our RTSP server is normally start ! The default RTSP server port is 558.
- d) You must assure our H264 server is normally start ! The default H264 video port is 17518.
- e) If you connect remote pc from internet, you can assure the remote pc have a internet ip address and can be reached! or you need to map tcp port 80, 558, 17518 on your router for your PC which run this ip camera software!
- f) If you have Firewall in PC, you need to open TCP port 80, 558, 17518 in your firewall.
- g) Flash viewer need flv, swf record format. WMP viewer need asf, wmv record format. QuickTime, Realplayer, VLC player need mp4, mov record format.

12 Why I could not display my capture card ‘s video ? or only one camera can be displayed! (such as PCIO2000 card, Kodicom8800/4400 card, KGuard card etc.)

- a) You must install WDM driver for these device! because only WDM driver accord with DirectShow standard! Many WDM driver for capture chipset can be downloaded from internet!
- b) You can download some WDM driver from our website, for example :
PCIO2000 and Kodicom or other capture card which use Conexant BT878A chipset :
(<http://www.h264soft.com/downloads/bt878.zip>) . You can select “[082] - Generic Bt8xx based with 4 Composite ins” item to install !
KGuard card and some TV card which use Philips 7130-7134 chipset :
(<http://www.h264soft.com/downloads/7130.zip>)
- c) You can use this program (amcap.exe) to test whether your WDM driver is OK.
- d) You can select the same video source for 4 channels, but select the different video sub-input for 4 channels! Then you can display all 4 cameras which connected to your capture card.

13 How can I view my camera video on iphone ?

You can open a internet browser such as Safari, then input url : <http://xx.xx.xx.xx:80/mobile.html> on your iphone! this method can view each channel video of our software! you must map web port 80 for your pc on your router at first! If you want to view the video and audio from our software on your iphone, you can start a

VLC player or Quicktime player to open : rtsp://xx.xx.xx.xx:558/live.sdp?ch=1 ! of course you need map tcp port 558 for your pc on your router!

14 How can I send text message to my cell phone with H264Webcam ?

SMS text messaging is easy to do. In the Email /FTP Alert setup screen go to the field for the email TO: field. Most all phone carriers translate SMS to email. You simply format the address to the 10 digit phone number@ the carrier domain address. In the below example we have a pretend phone number of 555-111-2222 that is a Verizon (vtext.com) phone number. If I wanted to attach a picture with text the address for Verizon would be the phone number @ vzwpx.com.

Alltel

[10-digit phone number]@message.alltel.com

Example: 1234567890@message.alltel.com

AT&T (formerly Cingular)

[10-digit phone number]@txt.att.net

[10-digit phone number]@mms.att.net (MMS)

[10-digit phone number]@cingularme.com

Example: 1234567890@txt.att.net

Nextel (now Sprint Nextel)

[10-digit telephone number]@messaging.nextel.com

Example: 1234567890@messaging.nextel.com

Sprint PCS (now Sprint Nextel)

[10-digit phone number]@messaging.sprintpcs.com

[10-digit phone number]@pm.sprint.com (MMS)

Example: 1234567890@messaging.sprintpcs.com

T-Mobile

[10-digit phone number]@tmomail.net

Example: 1234567890@tmomail.net

US Cellular

[10-digit phone number]email.uscc.net (SMS)

[10-digit phone number]@mms.uscc.net (MMS)

Example: 1234567890@email.uscc.net

Verizon

[10-digit phone number]@vtext.com

[10-digit phone number]@vzwpx.com (MMS)

Example: 1234567890@vtext.com

Virgin Mobile USA

[10-digit phone number]@vmobl.com

Example: 1234567890@vmobl.com

15 How can I view all remote cameras at the same time in IE browser?

You can open a IE browser, connect to our software web server, then select ActiveX viewer, input the user name and password and click login button, then you can view all cameras in remote! Click setup button can config viewing channels!

16 Does H264WebCam support multi-monitor?

Yes! You can enter system setup dialog, then select a monitor to display! Of course you can directly move the software window to other monitor! The default setting of this parameter is “PC have no Multi-Monitor”, you need to change this parameter to other selections!

17 Does H264WebCam support DDNS?

Yes! H264WebCam Deluxe version and Exalted version can support DDNS function via two method!

- 1) One is dyndns supporting! You need to apply a dyndns domain from www.dyndns.com at first, and get a domain, user name and password! Then input these information to H264WebCam system setup dialog! the deluxe version software can automatically host this dynamic domain! This domain can be used in IE browser!
- 2) Another method is H264 user name mode! You can run the Exalted version software on your home pc, and create a H264 user name at first! Then you can run the free version software on your office PC, click channel button, and input your H264 user name to netaddress item, enable “H264 user” checkbox! Then you don't need any ip address to connect to your home pc to view your cameras! You need to map tcp port 17518 for your home pc on your home router at first!

18 How to save cpu resource in H264WebCam?

You need to select the appropriate record format in this network camera software! so camera video can avoid to be re-encoded! this will save many cpu resource! then it can support more cameras recording at the same time!

- 1) If your network camera is a mjpeg camera, you can select avi record format in H264WebCam, and select mjpeg video encoder in record setup dialog! Then this webcam software will directly save raw video stream to disk or sending to network !
- 2) If your network camera is a mpeg4 camera, you can select avi, mp4 or mov record format to avoid re-encoding !
- 3) If your network camera is a h264 camera, you can select avi, mp4, mov or flv record format to avoid re-encoding !

19 How to change the GUI size of H264WebCam from 1024*768 to others?

The default GUI size of H264WebCam is 1024*768, you can change this size to 1024*600, 1152*864, 1280*768, 1280*800, 1280*960, 1280*1024, 1360*768, 1440*810, 1440*900, 1440*1080, 1600*900, 1600*1024, 1600*1200, 1920*1080, 1920*1440 etc. Please change this parameter in system setup dialog for various monitor!

20 How to change the video windows arrangement for 16:9 monitor?

You can click 16:9 button or 4:3 button in the left-bottom corner of H264WebCam, then you can select 3*2, 4*3, 5*4, 6*5 windows arrangement or 2*2, 3*3, 4*4, 5*5, 6*6 windows arrangement! This method can fit the wide-screen monitor!

21 How to assure the H264WebCam software can be running for ever?

Version 3.84 have add the watchdog function, so it can assure the H264WebCam software can be running for ever! The watchdog software will always check the status of the H264WebCam software, when it find the main program have been hung or die, watchdog can restart the H264WebCam software at once ! This function can assure 24/7 running!

22 How to use the keyboard shortcuts in H264WebCam software?

There are 7 keyboard shortcuts in H264WebCam software.

- 1) PageUp -- Switch to the prior displaying channel video page, same as the button PageUp.
- 2) PageDown -- Switch to the next displaying channel video page, same as the button PageDown.
- 3) Tab -- Switch the channel video numbers to display, same as the multi-channel video display buttons!
- 4) Left -- Control the PTZ camera pan to left.
- 5) Right -- Control the PTZ camera pan to right.
- 6) Up -- Control the PTZ camera tilt to up.
- 7) Down -- Control the PTZ camera tilt to down.

23 How to use the digital PTZ function in H264WebCam software?

Version 3.87 have add the camera digital PTZ function. You can move the mouse to one channel video at first, then use mouse wheel to zoom in video or zoom out video! And you can use mouse left button to drag video to left, right, or up, down! This function only act on video displaying, don't act on video recording! When you click multi-channel video display button, all channels will lose digital PTZ effect, and restore video displaying to origin!