



# Harrison Heritage News

Published monthly by the

**Harrison County (Ky.) Historical Society**

P.O. Box 411, Cynthiana, KY 41031

[www.harrisoncountky.us/historical-society](http://www.harrisoncountky.us/historical-society)

2007 Award of Merit—Publication or Journal, Kentucky History Awards

July 2016

Vol. 17, No. 7

## Can You Place That Name?

by Philip Naff

[write2me@thegenealogybox.com](mailto:write2me@thegenealogybox.com)

Everybody, no matter their age, is “oP” or “from” somewhere. That subject of the preposition can often tell a lot about a person, and its identification is important to finding out more if you are researching a genealogy or a biography of any person, past or present.

When I began my research of Kentucky gazetteers and business directories, a target list of communities was needed for the search, but only a slim list of Harrison County place names derived from maps, atlases, county histories, and Rennick’s *Kentucky Place Names* could be developed. I found a few only during a search of the directories themselves.

Not all of the communities of the following list were found in the gazetteers or business directories which were reviewed, but almost all were found in one year’s volume or another. Some ended up simply being references to a locale or physical feature, like a church, cemetery, or creek, more than for a community. For a few it might be more correct to place “P.O.” after the name, as the local post office was all the name referred to. Those which are in italics are names which

have been superseded by more modern incarnations, but by being “more modern,” it does not mean that these communities “exist” anymore. It is just the last name by which they were identified.

Alberta  
Antioch or Antioch Mills  
Avena  
Baltzell(e) or Baltzell(e)town  
Beaver  
Berry (formerly Berry’s Station, Berryville)  
*Berry’s Station (see Berry)*  
*Berryville (see Berry)*  
*Boswell’s Crossroads (see Leesburg)*  
Boyd (formerly Boyd’s Station, Broad Ford Mill)  
*Boyd’s Station (see Boyd)*  
*Branch (see Durbintown)*  
Breckinridge (formerly Unity, Tric(k)um)  
Broadwell  
*Broad Ford Mill (see Boyd)*  
Buena Vista  
Butler Station P.O.  
Claysville (formerly Marysville)  
Colemansville  
Colville  
Conrey  
Connersville  
Curry  
Cynthiana  
Durbintown (formerly Branch)  
Eureka  
*Fairview (see Kelat)*  
Garnett Station  
Havilandville  
Hinton  
Kelat (formerly Fairview)  
Lair (formerly Lair’s Station)

*Lair’s Station (see Lair)*  
Leesburg(h) (formerly Boswell’s Crossroads)  
Leeslick or Lees Lick  
*Marysville (see Claysville)*  
Marcus  
Mt. Pleasant?  
Oddville  
Poindexter  
*Pughville (see Sunrise)*  
Renaker  
*Robertson (see Robinson)*  
*Robertson’s Station (see Robinson)*  
Richland  
Robinson (formerly Robertson, Robertson’s Station)  
Rutland  
Salem  
*Scott’s Station (see Shady Nook)*  
Shady Nook (formerly Scott’s Station)  
Smitsonville  
Sunrise (formerly Pughville)  
Sylvandell or Sylvan Dell  
*Tric(k)um (see Breckinridge)*  
*Unity (see Breckinridge)*  
Venus  
Wagoner’s Chapel

Had you heard of all these places? Can you add any more?

This issue of the HH N includes the Harrison County excerpts from yet another Kentucky gazetteer and business directory, that of 1881-2, the publication of which nearly coincided with that of Perrin’s *History of Bourbon, Scott, Harrison and Nicholas Counties, Kentucky*. Turn to page four to begin another journey through Harrison County’s communities of the past.

## Harrison County Historical Society

Don Wagoner, President  
 Julie Muth, 1st Vice President  
 Brian Harney, 2nd Vice President - hchskyl@gmail.com  
 JaneAnn Johnson, Secretary  
 Virgie Wells, Treasurer  
 Denny Lipscombe - Historian - dennyL1986@yahoo.com  
 Bill Penn, editor: pennwma@aol.com

### WELCOME NEW MEMBERS

Judith Davis, Lebanon, OH  
 Freda P. Walters, Lexington, KY

### Historical Society Program: June 23, 2016

Motion approved for election of officers for period July 2016 - June 2017: Don Wagoner, president; Julie Muth, 1st v. p.; Brian Harney, 2nd v. p.; JaneAnn Johnson, secretary; Virgie Wells, treasurer. Planned program speakers were unable to attend at the last minute. Treasurer and secretary gave reports. BT Darnell reported on work performed at the Lair Vault and explained the setup of the Vault Restoration Fund. Motion was made concerning the \$8,000 certificate of deposit for the vault fund and oversight conditions by the owner, the Harrison County Historical Society. Pres. Wagoner announced a Society field trip on Oct. 22 to Buffalo Trace Distillery in Frankfort. Members discussed other possible Society field trips to Renfro Valley and Bardstown. (Submitted by JaneAnn Johnson, secretary).

### The Vault Restoration Fund

is still open for donations. A bank account has been set up - jointly administered by BT Darnell, John Lair, Don Lee, and Billy Grayson - to pay for the present repairs as well as a maintenance fund for the future. If you would like to contribute, make a check to "The Ruddell Fort Vault Fund" send it to "Kentucky Bank" PO Box 280, Cynthiana, KY 41031.

### Upcoming Meetings and Events

Meeting time and place: *Hospice of the Blue Grass on Oddville Avenue, 1317 US HWY 62E. Meeting room is 1st floor rear entrance. Except March 19 Sat. 10 am Rohs Opera House.*

**July 28** - Bob Owen will speak on the interesting military career of his Uncle Jack Owen, who was a US Air Force Major General in WW2, a POW, and commanded the Kentucky Air National Guard.

**Oct. 22** - Field trip for members to Buffalo Trace Distillery. Don't miss this opportunity to tour one of the most popular distilleries in Kentucky. We will be enjoying lunch at Jim's Seafood, located next to the distillery. A sign-up sheet will be in the August newsletter. Mark your calendar now!

## President's Corner

- Don Wagoner

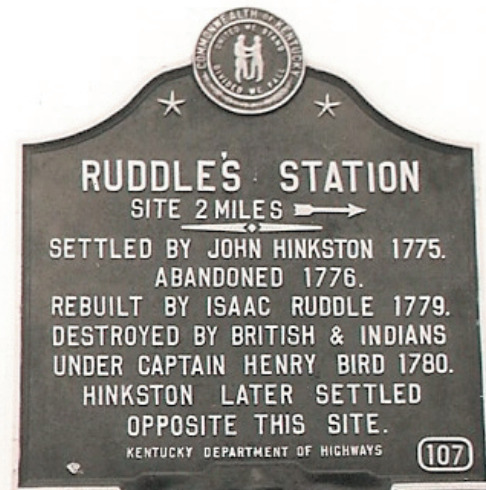


On June 23, 2016, during the monthly meeting, the members voted unanimously for the Harrison County Historical Society to become the Trustee of an \$8,000 Certificate of Deposit (CD) from attorney Sam Arnold.

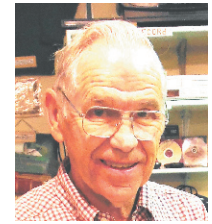
In 1999, he received the CD from Charles Lair, as a trustee to make repairs on the Lair vault that is located on the Mr. and Mrs. Dunny Darnell farm.

On June 28, 2016, our treasurer, Virgie Wells, and I, on behalf of the Harrison County Historical Society, met with attorney Arnold to accept Trusteeship of the \$8,000 Certificate of Deposit. The Field & Main Bank, Cynthiana, Kentucky location gave us a free safety deposit box, where the CD was secured and stored by Ms. Wells.

As Trustee of the \$8,000 Certificate of Deposit, the Harrison County Historical Society will accept requests from the Lair Vault Association for annual inspections, maintenance and repairs of the vault that will require the Harrison County Historical Society members' vote of approval for each and every expenditure from the CD's interest earned and in an emergency situation to fund the necessary repairs from the \$8,000 CD should there not be enough interest to fund the needed repairs. When the current CD expires, the Harrison County Historical Society by vote of the members will reinvest all the monies from it in another CD or appropriate interest earning financial instrument as the Trustee of the account.







Kenny Simpson, Curator

### **The Cynthiana/Harrison County Museum**

**By Sally Kinney**

**This month I'll be writing about the "Front Room" or Room #1 at the Museum. It is certainly a welcoming place, and the displays here are some of the favorites of museum personnel, regular visitors and those who come for the first time.**

**Pictures as well as other displays line the walls. Most are of notable Harrison County people, but of interest also are those of Abdallah, Harrison Chief, and Kentucky Colonel—three of our finest horses. There are also fans, shirts, arrowheads, marbles, and many other items of interest—especially popular are the Raggedy Ann and Andy pictures and the colorful wall hanging of them at tea.**

**Display cases contain collections of various kinds: one favorite is the commemorative plates: "a 1970s-80s snapshot" of the community, which showcases local schools and churches. Another featured collection is models of automobiles from 1903—1950.**

**A display of adding machines and typewriters was of particular interest to one visiting 13 year old boy, while his 9 year old sister examined the doll house with its many miniatures (she especially liked the stairway and the bathroom). Her mother admired the tiny Bible and a friend liked the kitchen cabinet because it reminded her of the one her grandmother had.**

**Two "replicas" of Cynthiana landmarks, the Handy House and the Log Cabin, are featured in detail. Both were crafted by Neville Haley who created many other models displayed throughout the Museum.**

**A special favorite as one enters the "Front Room" is the child-sized farm wagon (driven by Raggedy Andy) which was made for Jim Bob Martin by his grandfather about 1923. A sign on the wagon tells of its unique use.**

**Recently, Museum personnel discovered a mystery at the Museum in "The Front Room." A picture of 24 distinguished gentlemen of all ages, holding swords, sitting under a banner on which was displayed an insignia with Cynthiana Company No.15, has not yet been identified. If you can help us identify these men, come by. Hope to "see you at the Museum."**

# The Genealogy Box

A newsletter for genealogy & family history research  
in Harrison County, Kentucky



July 2016

Issue 31

*R.L. Polk & Co.'s*

## Kentucky State Gazetteer and Business Directory

for 1881-82

by Philip Naff  
[whatsin@thegenealogybox.com](mailto:whatsin@thegenealogybox.com)

We've been here before . . . but we haven't.

We've been here before in the sense that this is not the first time extracts from yet another 19th century Kentucky gazetteer, business directory, or city directory has appeared within the pages of the *Harrison Heritage News*.

However, this issue will contain the last of a series of extracts published in the *Harrison Heritage News* (HHN) or *The Genealogy Box* (TGB). It would be nice if one could have been found for every year of the 19th century but it just didn't happen that way.

Online resources such as Google Books and Archives.com have been searched and most of the likely physical repositories have been examined. Libraries of Northern Kentucky from Covington to Lexington have been searched for microfilm, microfiche, and reprints of these old gazetteers and business directories. Their contents have been scoured for listings for Harrison County communities and added to the archive of history as recorded in the pages of the *Harrison Heritage News*.

In case you missed reading the extracts when they were first published, the following list of the texts, sorted by year, should form a ready reference for research using business directories listing Harrison County communities.

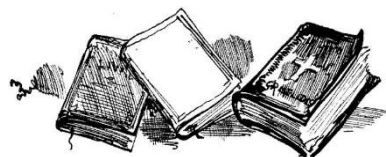
~

**1859-60**—*George W. Haves' Kentucky State Gazetteer and Business Directory for 1859 and 1860.*

Published September, 2009 (HHN 10-09) under the title of "Harrison County in 1859: When Old Was New."

**1865-66**—*Hodgman & Co.'s Kentucky State Gazetteer, Shipper's Guide and Business Directory for 1865 and 1866.*

Published May, 2010 (HHN 11-05) under the volume's title.



**1868**—*Covington City Directory, Combining Complete Business Directories of Cynthiana, Paris and Lexington, for 1868* (Cynthiana only; no other Harrison County communities were listed).

Published May, 2012 (HHN 13-05) under the volume's title.

**1871**—*Covington City Directory, also, Complete City Directories of Cynthiana, Paris and Lexington, for 1871.* (Cynthiana portion only; no other Harrison County communities were listed).

Published April, 2012 HHN (13-04) under the title of "Finding

What You Didn't Know You Were Looking For."

**1876-77**—*Kentucky State Gazetteer and Business Directory for 1876-7.*

Published March 2011 HHN (12-03) under the volume's title.

**1877**—Business listings published alongside the D.G. Beers 1877 landownership map of Harrison County, Kentucky.

Published March, 2014 HHN (15-02) under the title of "What Would Daniel Boone Do?"

**1879-80**—*Kentucky State Gazetteer and Business Directory for 1879-80.*

Published January, 2012 HHN (13-01) under the title of "A Lot of History for the Price of a Stamp."

**1881-82**—*Kentucky State Gazetteer and Business Directory, 1881-82.*

Published July, 2016 (17-06 (TGB31)) under the title "Can You Place That Name?"

**1883-84**—*Kentucky State Gazetteer and Business Directory, 1883-4.*

Published January-February 2014 HHN (15-01 (TGB23)) under the title of "Those Censusal Sevenies."

**1887-88**—*Kentucky State Gazetteer and Business Directory, 1887-8.*

Published April 2016 (HHN 17-4 (TGB30)) under the title "The Better Day."

**1895-96**—*Kentucky State Gazetteer and Business Directory, 1896*

Published July 2015, 2015 (HHN 16-6 (TGB29)) under the title "The Year 1895: A Place in Time, Not Very Far Away."

~

Whatever was done, it's all we've got, so get ready to go. The year is 1881 and the publisher tells us that



“In the following section of the work the post-offices of Kentucky are arranged in alphabetical order, and a description is given of each place, with an alphabetical list of all persons doing business therein.”

As always, we begin at the fine village of . . .

**ANTIOCH MILLS.** Was first settled in 1878, is a village in Richland precinct, Harrison county, 13 miles north of Cynthiana, the county-seat; its most convenient shipping point is Falmouth, on the K.C.R.R. Population, 30. Mail, semi-weekly. Alvin Sellars, postmaster.

Brannock, D.N., general store.  
Bristow, J.W., teacher.  
Collier, W.J., undertaker.  
Cravens, Mrs. N.L., millinery.  
Hayden & Bro., carpenters.  
Kennedy, Z.M., blacksmith.  
Owen, F.W., general store  
**Sellars, Alvin**, Flour and Saw-mill.  
Smith, T.J., teacher.  
Truax, A.J., pumps.  
Truax, G. L., physician.  
Whiteker, I.N., justice of peace.  
Woole[r]y, John, deputy county clerk.  
Woole[r]y, Anna, teacher.  
Woole[r]y, Miss Betty, music-teacher.

**BERRY.** A station on the K.C.R.R., and an incorporated town of 400 inhabitants, located on South Licking river, in Harrison county, 12 miles north of Cynthiana, the county-seat and nearest bank. Tobacco, stock and produce are shipped. Express, Adams. Telegraph, W.U. Mail daily. L.H. Rankin, postmaster. Ba[ll]tzell, W.J., druggist. Crouch, J.B., general store. Juett, J.L., grocer. King, R.U., general store. McNess [*sic*], A.J., tobacco. Rankin, J.D., express agent. Rankin, L.H., Confectioner. Rucker, J.D., general store.

**BOYD'S STATION.** Population 100. A village in Harrison county, and a station on the K.C.R.R., 16 miles north of Cynthiana, the county-seat, and 150 from Louisville. A flour-mill, a church, and a public school are here, and tobacco is the chief shipment. A distillery at this point might prove

successful. Land hereabouts is worth \$25 to \$50 per acre. Express, Adams. Telegraph, Western Union. Mail, daily. James Woodbury, postmaster. Blair, J.P., flour mill. Durant, George B., express agent. Eckler, S.J. & Son, gen'l. store and R.R. agt. Kellar, J.A., general store. Stone, L., general store.

**BRANCH.** Harrison county, an unimportant post-office.

**BROADWELL.** This is a country post-office in Harrison county at which mail is received try-weekly. Mary A. Lail, postmaster.

**CLAYSVILLE.** A post-office on the main Licking river, in the north-eastern part of Harrison county, 12 miles north-east of Cynthiana, the county-seat, and 9 north-east of Poindexter, on the K.C.R.R. Exports tobacco, grain, and stock. Tri-weekly stage to Milford and Boonesville; fare to the former, 25c; to the latter place, 75c. Daily mail.

Asbury, E.T., plasterer.  
Asbury, W.T., general store.  
Catherwood, M., carpenter.  
Chandler & son, shoemakers.  
Curran, W.H., physician.  
Hamilton, J.B., hotel  
Hitch, J.D., blacksmith.  
Linley, S.T., blacksmith.  
Linley, Wm., grocer.  
Montgomery, James, teacher.  
Sandy, C.W., flour-mill.  
Snodgrass, A., general store.

**CONNERSVILLE.** Harrison county, a small village, 7 miles from the county-seat—Cynthiana—which is also the shipping station on K.C.R.R., and nearest bank location. Country produce and some live stock is shipped. Stage to Cynthiana and Sadieville tri-weekly; fare five cents per mile. Mail tri-weekly. B.M. Tucker, postmaster.

Boyd, J.W., general store.  
Carter, E.T., shoemaker.  
Case, Henry, undertaker.  
Conner, A., physician.  
Conrad, Joseph, farmer.  
Conroes [*sic*] & Goodnight, hotel.

Feghtmaster [*sic*], E.D., hotel and blacksmith.  
Hendricks, John H., architect and builder.  
Levi, H.M., general store.  
Payer, O.P. [*sic*; read *Boyers, A.P.*?], farmer  
Spennenburg, Jas., blacksmith.  
Tucker, B.M., General Store.

**CURRY'S RUN.** Only a country post-office in Harrison county, 4 miles from Robertson's Station, the shipping point, on K.C.R.R., 160 miles from Robertson's Station, the shipping point, on K.C.R.R., 160 miles from Louisville, and 9 north of Cynthiana, the county-seat. Mail tri-weekly. W.R. Epperson, postmaster.

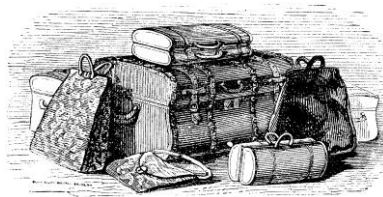
Blackford, C., express agent.  
Brannock, J.R., general store.  
Ekler, Rev. Wm. (Baptist).  
Groggle, John, blacksmith.  
Johns, Rev. J.T. (Methodist).  
Slade, Samuel, general store.  
Taylor, N.P., saw-mill.  
Whiteker, Ben A., blacksmith.

**CYNTHIANA.** An important station on the line of the K.C.R.R. It is pleasantly situated on the South Licking river, in the south-eastern theportion of Harrison county, of which it is the seat of justice, 37 miles north-east of Frankfort, and 115 from Louisville. It was originally settled in 1793, incorporated as a town in 1802, and as a city in 1860. Seven churches, a good brick court-house, good public schools, a select school, 2 flour-mills, 3 distilleries, a good hotel, a bank and a woolen factory are here, supported by a population of 2,500. Express, Adams. Telegraph, Western Union. Daily Mail. Miss Mattie D. Todd, postmaster.

Asbury, Rev. J.W., (col. Methodist).  
Ashbrook Bros. (Felix G. and Samuel J.), distillers. (*See adv.*)  
Banks, Edmund R., stoves and tinware.  
Beale, Andrew J., physician.  
Bowen, James W., wagon-maker.  
Brewington, Charles, general store.  
Bridwell House, M.V. Bridwell, Prop. (*See adv.*)  
Broh, Adolph, clothing.  
Brown, George, shoemaker.  
Brown, James A., private school.  
Burns & Roberts, grocers.  
Central Hotel, T.J. Green, prop.

Clary Bros., horseshoers.  
 Collier, Richard M., sheriff.  
 Cook, C.B. & Co., millers and distillers.  
 Cromwell, H.F., blacksmith.  
 Cynthiana Democrat, Hanson P. Diltz, prop.  
 Cynthiana News, A.J. Morey, publisher.  
 Delling, Christian T., general store.  
 Desha, Lucius, Jr., lawyer.  
 Douglas, P. & Sons, grocers.  
 Etzel, George, meat market.  
 Eveleth, Frederick A., harness.  
 Faerber, Mrs. Mary, hotel.  
 Farmers Deposit Bank of Cynthiana, capital, \$100,000, J.W. Peck, pres., L. Van Hook, cash.  
 Fennell, J. & A., general store.  
 Fisher, Wm., saloon.  
 Flade, Alexander, baker.  
 Forman, Thomas T., lawyer.  
 Frisbie, Harry D., station agent, K.C.R.R.  
 Garnett, Thomas A., grocer.  
 George, James D., notions.  
 Givens, David A., gen. store and clothing.  
 Gleason, Timothy, hotel and saloon.  
 Good, Jason J., sewing-machines.  
 Grater, Christopher, baker and confectioner.  
 Gray, Frank, physician.  
 Greer, Thomas J., prop. Central hotel [sic].  
 Greiner, Joseph, tailor.  
 Grinan, L., photographer.  
 Hartman, F.W., lumber.  
 Haviland, Henry H., County Judge.  
 Hedges, James T., general store.  
 Henderson, Rev. J.A. (Methodist South).  
 Hill, Patrick M., tailor.  
 Hoessli, Jost, stoves and tinware.  
 Hoffman, Hugh, T., city marshal.  
 Hogg, John T., agent, Adams Express Co.  
 Hood, Thomas H., druggist.  
 Howk, George, Jr. grocer.  
 Jackson, James, shoemaker.  
 Jefferson & P\_\_\_\_ok [ill.], livery.  
 Johnson, Rev. John (col. Baptist).  
 Johnson, Samuel S., dentist.  
 Jones, Robert, general store.  
 Kehoe Bros., saddles and harness.  
 Keller, James M., Livery and Sale Stable. (See adv.)  
 Lacy, James W., insurance agent.  
 Lake, John W., lawyer.  
 Lang, Pete, shoemaker.  
 Longmoor, Wood W., circuit clerk.  
 Luig, Theodore, shoemaker.  
 Lydick, S.T. & Bro., livery.

M'Kee & Skirvin, farm implements.  
 McNeese, Wm. T., physician.  
 Madison, James P., physician.  
 Madison, J.R. & Bro., cigars and tobacco.  
 Martin, L.M., lawyer.  
 Mattox, John W., general store.  
 Megibbon, Bramble & Co., distillers.  
 Megibbon, Thos. J., distiller.  
 Mersman, Rev. ---- (Catholic).  
 Miller, Fayette M., dentist.  
 Miller, John S., grocer.  
 Morgan, John F., county attorney.  
 Musselman, W.C., deputy collector int. rev.  
 National Bank of Cynthiana, capital, \$150,000, Henry E. Shawhan, President; J.S. Withers, Cashier.  
 Norris, Mrs. M.M., Milliner.  
 Northcutt, Wm. L., dry goods.  
 Nourse, Wm. M., painter.  
 O'Hearn, Mrs. B., saloon.  
 O'Hearn, Mrs. Ellen, hotel and saloon.  
 Pate, V.H. & Co., carriage-makers.  
 Peck, John W., groceries and flouring-mill.  
 Perrin, Achilles, lawyer.  
 Pohlmyer, Mrs. Kate, grocer.  
 Prather, Wm. B., lawyer.  
 Ratcliffe, Wm. H., lawyer.



Redmon, Chas. H., carpenter.  
 Redmon Distillery Co., cap. \$15,000. Thos. Hickson, pres.; L. Van Hook, sec. and treas.  
 Redmon, Hope, Jr., gunsmith.  
 Remington, James A., grocer.  
 Renaker Bros., drugs and books.  
 Richard, John, meat market.  
 Rieckel, Charles, jeweler,  
 Robinson, John L., painter.  
 Rohs, Herman, gen. store and wagon-maker.  
 Shawhan, Henry C., lawyer.  
 Shephard, Thos. J., jeweler.  
 Simon, Morris, general store.  
 Slade, Bents & Co., merchant tailors.  
 Smiser, J.H., physician.  
 Smiser, James W., Furniture and Undertaker, Pictures, Picture Frames and Carpets.  
 Smith, Wm. W., hotel.  
 Spohn, meat market.

Stanley, Rev. Wm. (Christian).  
 Stewart, Wm. A., grocer.  
 Stoddard, C.M.N. jeweler.  
 Swinford & Lafferty, lawyers.  
 Toadvine & Daniel, grocers.  
 Triplett, Rev. J.E. (Presbyterian).  
 Tudor, Charles W., general store.  
 Van Hook, L., cashier, Farmers Bank.  
 Van Hook, L. & Co., distillers.  
 Wall, Wm. S., mayor.  
 Watson, Samuel, saloon.  
 Webster, Charles A., hardware  
 West, Caleb W., lawyer.  
 Wherritt, Perry, county clerk.  
 Wickliffe, James C., dry goods.  
 Williams John H., saloon.  
 Williams, Samuel, undertaker.  
 Wills, Richard H., livery.  
 Withers & Throckmorton, Insurance Agents.  
 Wittman, August, grocer and saloon.  
 Wittman, A., Jr., confectioner.  
 Wohlwenter, Joseph, wagon-maker.  
 Woodward, Thomas D., saloon.  
 Woodward, Wm., tailor.  
 Woodward, Wm. B., confectioner.  
 Wright, Mrs. R., millinery.  
 Wyatt & Hinkson, liquors.

**HAVILANDSVILLE.** In the northeastern part of Harrison county, 15 miles north of Cynthiana, the county-seat, and 10 miles south of Falmouth, its nearest shipping point, on the K.C.R.R. Adams Express. Semi-weekly mail. Population, 50. W.D. Hickman, postmaster.

Arnold, W.B., Flour- and Wool-carding.  
 Ashbury [sic], John, live stock.  
 Browning, D.P. & Co., saw- and corn-mill.  
 Hickman, W.D., General Store and Leaf-tobacco.  
 Kandy, G.W., blacksmith.  
 Slade & Hill, general store.  
 Vanhook, H.V., physician.

**LAIR'S STATION.** On the K.C.R.R., in the southern part of Harrison county, 4 miles south of Cynthiana, the county-seat, and 125 miles northeast of Louisville. Express, Adams. Mail daily. S.T. Reynolds, postmaster.

Bealert, R. & Bro., wagon-makers.  
 Brent, Nathan, blacksmith.  
 Fowler, Wm. A., horse-dealer.  
 Lair, Joseph, hotel.



Megibben, Bramble & Co., distillers.  
Megibben, T.J., distiller and live stock.  
Reynolds, S.T., flour-mill and general store.  
Rohr, John, blacksmith.  
Sharpe Distillery Co., distillers.  
Woodford, J.M., physician.

**LEESBURG.** In the southern part of Harrison county, 10 miles south of Cynthiana, the county-seat, nearest shipping point by rail, on the K.C.R.R., and 100 east of Louisville. Tri-weekly mail and stage to Cynthiana. Population 250.

Anderson Bros., black-smiths.  
Barley, Joseph, physician.  
Barkley, Miss M.O., teacher,  
Hart, Thos. H., Druggist.  
Sanders & Wilson, general store.  
Shropshire, J.C., groceries.  
Zumwalt, James S., groceries.

**ODDVILLE.** Settled in 1851, is a small village in Harrison county, 6 miles north-west of Cynthiana, the county-seat, bank location, and shipping station on the K.C.R.R. A good general store is needed here. The population is 160, and the shipments consist of tobacco, chiefly. Stage to Claysville and Cynthiana. Fare 50c. Mail tri-weekly. A.F. Whiteker, postmaster.

Batson, John D. & Son, physicians.  
Conaway, Mrs. M.M., general store.  
Crow, Rev. J.C. (Methodist).  
Duncan, Archie, blacksmith.  
Frisbie, H.D., station agent.  
Hog, John T., express agent.  
Lancaster, Rev. R. (Methodist).  
Michael, T., blacksmith.  
Pew, George, live stock.  
Rees, B., live stock  
Rose, C.W. wagon-maker.  
Sawyers, Rev. J.S. (Methodist).  
Wheeler, John H., Leaf-tobacco.  
Whiteker, A.F., shoemaker.  
Whiteker, R.J., justice.

**POINDEXTER.** A small station on the K.C.R.R. in Harrison county. Daily mail. Harry Martin, postmaster.

Argo, J.F., blacksmith.  
Martin, Harry, Express Agt. and Store.  
Martin, W.H., physician.  
Smith, H.C., flour-mill.  
Wiglesworth Bros., distillers.

**RICHLAND.** In the northern part of Harrison county, 11 miles north of Cynthiana, the county-seat, 5 south of Berry's station, its nearest shipping point, and 126 north-east of Louisville. Tri-weekly mail. Population 25. L.F. Struve, postmaster.

Star Card Co., printers.  
Struve, Felix K., printer.  
Struve, L.F., General Store.

**ROBERTSON'S STATION.** On the K.C. R'y., in the northern part of Harrison county, 9 miles north of Cynthiana, the county-seat, and 138 north-east of Louisville. Adams Express. Daily mail. Population 30. E.S. Blackford, postmaster.

Berry, J.G., farmer.  
Blackford, E.S., General Store, Express and R.R. Agent.  
Bowman, J., flour-mill.  
Brown, Wm., bridge-watch.  
Curl, Wm., farmer.  
Garnett, A.J., live stock and tobacco.  
Garnett, L. & T.T., farmers.  
Green, Berry, carpenter.  
Levisque, H.C., physician.  
McMurty, Wm., farmer.  
Martin, L.M., lawyer.  
Sellers, David, live stock.  
Taylor, W.P., saw-mill.

**RUTLAND.** In the western part of Harrison county, 10 miles north-west of Cynthiana, the county-seat, 4½ south-east of Hinton, its nearest shipping point, on the C.S. R'y., and 154 north-east of Louisville. Tri-weekly mail. Population 30. A.B. Bowen, postmaster.

Baird, F.M., barber.  
Baird, J.A., hotel.  
Baird, V., clerk.  
Bowen, A.B., Blacksmith.  
Bowman, Jacob, constable.  
Collins, L., woolen-factory.  
Coyns, Peter, turnpike contractor.  
Hardy, T.W., justice of peace.  
Highlander, H., showmaker.  
Huchcroft, Prof., teacher.  
Penn, A.B. & W.A., general store.  
Rose, W.T., livestock.  
Shoof, B.F., barber.  
Smith, Jno. T., wagon-maker.  
Stewart, C.H., physician.

**SHADY NOOK.** In the eastern part of Harrison county, 6 miles from Cynthiana, the county-seat and shipping point, on the K.C. R'y. Mail tri-weekly. Jos. Scott, postmaster.

Scott, Joseph, General Store.  
Scott, W.N., physician.  
Webster, J.F., general store.

**SMITSONVILLE.** In the northern part of Harrison county, and 8 miles north of Cynthiana, the county-seat, its nearest shipping point, on the K.C. R'y. Tri-weekly mail. Population 45. I.O. Rose, postmaster.

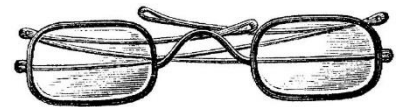
Hunt, Wm., flour-mill.  
Rose, Isaac O., Grocer.

**SYLVAN DELL.** In the eastern part of Harrison county, 9 miles north-east of Cynthiana, the county-seat, its nearest shipping point, on the K.C. R'y., and 123 northeast of Louisville. Adams Express. Semi-weekly mail. Lanson Miller, postmaster.

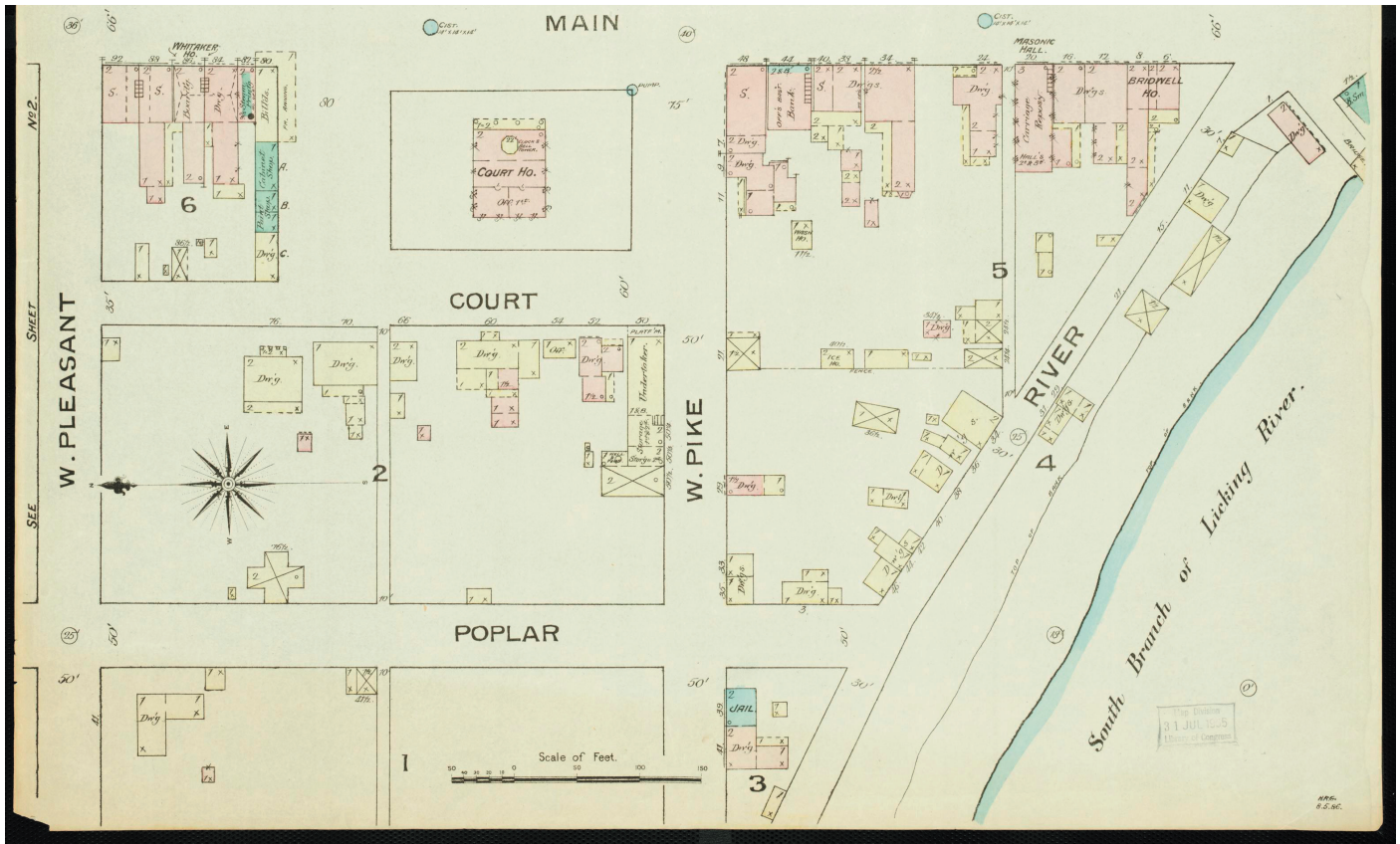
Bradshaw, Andrew, dentist.  
Brooking, J.C., cooper.  
Craycraft, Samuel W., tobacco.  
Martin, Jacob, blacksmith.  
Robinson, Cyrus T., blacksmith.  
Routt, L.D., general store.  
Wells, Nathan, physician.

**TRICKUM.** An unimportant post-office in Harrison county.

-----  
Source: The Harrison County communities listed in this gazetteer (with their corresponding page numbers) were: Antioch Mills (p. 53), Berry (p. 68), Boyd's Station (p. 81), Branch (p. 82), Broadwell (p. 83), Claysville (pp. 107-8), Connersville (p. 118), Curry's Run (p. 137), Cynthiana (pp. 138 & 140), Havilandsville (p. 210), Lair's Station (p. 240), Leesburg (p. 250), Oddville (p. 450-1), Poindexter (p. 482), Richland (p. 492), Robertson's Station (p. 497), Rutland (p. 506), Shady Nook (p. 513), Smitsonville (p. 524), Sylvan Dell (p. 537), and Trickum (p. 542). Two digital copies of this gazetteer had to be examined to develop a complete transcription of the communities of Harrison County for 1881-2. The first volume was located at [www.acpl.org](http://www.acpl.org), but volume 2 was missing from their online collection. Both volumes were eventually located at [www.archive.org](http://www.archive.org). Communities up thru Leesburg were transcribed from volume 1, while the remainder were transcribed from volume 2.



## Cynthiana Business District Sanborn Maps - 1886



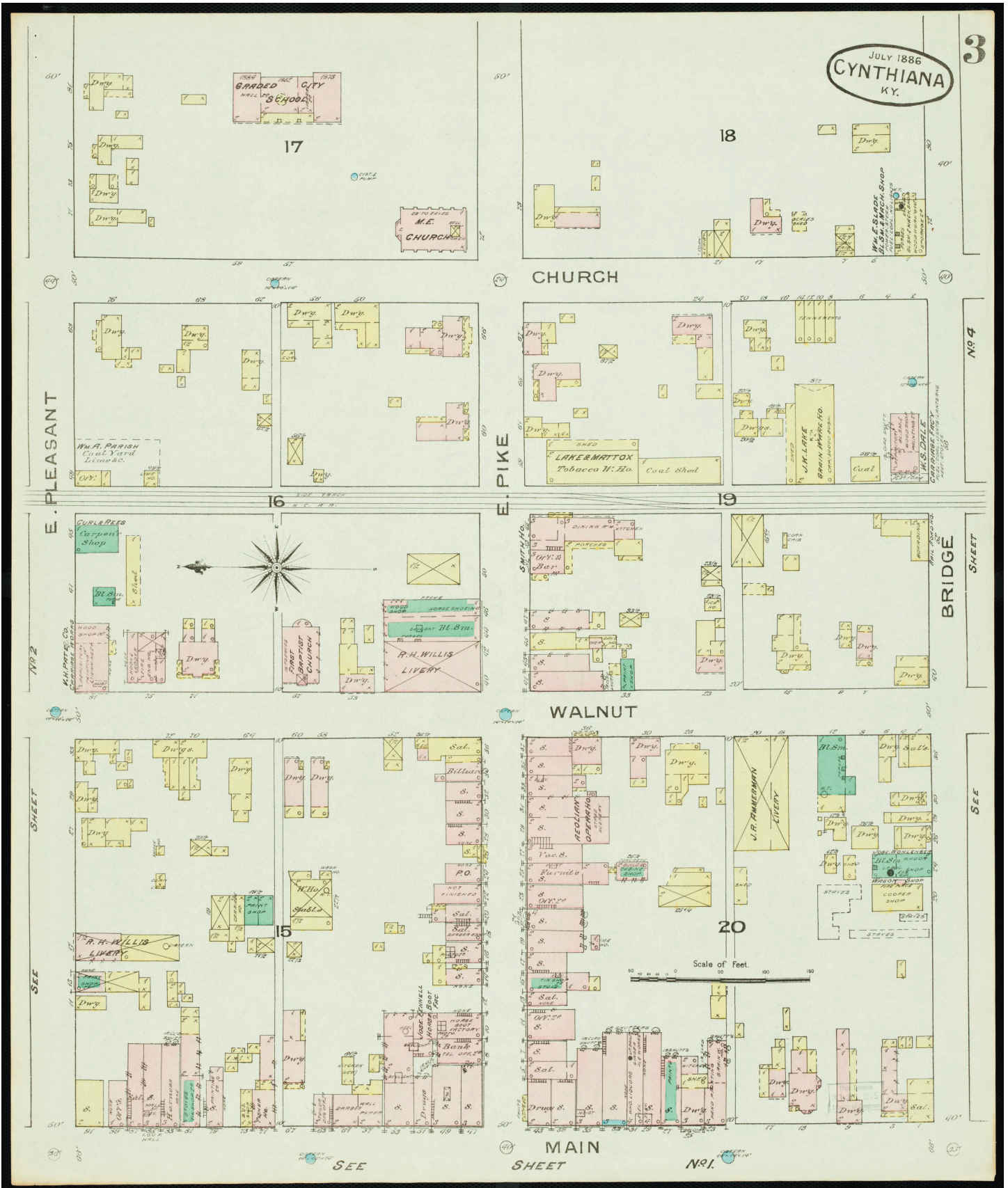
### The History of Sanborn Maps (Wikipedia):

“The Sanborn Maps were originally created for assessing fire insurance liability in urbanized areas in the United States. The maps include detailed information regarding town and building information in approximately 12,000 US towns and cities from 1867 to 2007. Author Kim Keister describes the legacy of Sanborn maps: ‘Stated simply, the Sanborn maps survive as a guide to American urbanization that is unrivaled by other cartography and, for that matter, by few documentary resources of any kind.’ They are a highly useful resource for historical research, planning, preservation, genealogical research, sociological studies and research of urban geography.

“The Sanborn Company sent out legions of surveyors to record the building footprints and relevant details about these buildings in all major urbanized areas regarding their fire liability. At its peak in the interwar period, the company employed about 700 people, including about 300 field surveyors and 400 cartographers, printers, managers, salesmen, and support staff. It was because of these details and the accuracy of the Sanborn maps, coupled with the Sanborn Company’s standardized symbolization and aesthetic appeal that made the Sanborn Company so successful and their maps so widely utilized. The maps were utilized by insurance companies to determine the liability of a particular building through all the information included on the map; building material, proximity to other buildings and fire departments, the location of gas lines et cetera. The very decision as to how much, if any insurance was to be offered to a customer was often determined solely through the use of a Sanborn map. The maps also allowed insurance companies to visualize their entire coverage areas; when an agent sold a policy he could color in the corresponding building on the map and thus visualize the companies’ coverage of an area.

“Today, Sanborn maps are found primarily in the archives and special collections of town halls and public and university libraries, and remain a vital resource for people in many different fields. Historical research is the most obvious use, with the maps facilitating the study of urban growth and decline patterns, and for research into the evolution of specific buildings, sites and districts. Genealogists use the maps to locate the residences and workplaces of ancestors.”





Cynthiana business district 1886 Sanborn map. Source: [https://en.wikipedia.org/wiki/Sanborn\\_Maps](https://en.wikipedia.org/wiki/Sanborn_Maps)



*Join Today or Renew Your Membership in the*

# **Harrison County Historical Society**

*Visit us on the web at [www.harrisoncountky.us/historical-society/](http://www.harrisoncountky.us/historical-society/)*

***Please make me a member of the Harrison County (Ky.) Historical Society in 20\_\_!***

Your Name: \_\_\_\_\_ E-mail: \_\_\_\_\_ @ \_\_\_\_\_

Street Address / PO Box: \_\_\_\_\_ Apt. No.: \_\_\_\_\_

City, State, & ZIP: \_\_\_\_\_ Phone: \_\_\_\_\_

Please send newsletters via USPS (\$12.00) \_\_\_\_\_ / via the internet (PDF format) (\$10.00) \_\_\_\_\_

Genealogy (Surname) or Local History Interests: \_\_\_\_\_

Comments or Suggestions? Story Ideas for Upcoming Editions? (Please continue on the back, if necessary):

If you are new member, please check here \_\_\_\_\_. If you are renewing, please check here \_\_\_\_\_.

**Personal checks & money orders accepted. Please return this form to the  
Harrison County (Ky.) Historical Society, P.O. Box 411, Cynthiana, KY 41031**

**NEW ADDRESS? DO NOT MISS AN ISSUE OF HARRISON HERITAGE NEWS**

Notify us of change of address, phone number, or e-mail address

**Harrison County, KY - History & Families Limited Edition  
Book featuring historic facts, photos and family histories.  
Only 50 copies are left for sale on a first order, first serve  
basis. Please know that when these copies are  
gone, no others will be published.**

-----Cut Here-----

## **Order Form**

**Please check the appropriate selections below:**

\_\_\_ Please enter my order for \_\_\_ copies of the Limited Edition Book,  
“Harrison County, KY History and Families.” Only \$54.95 each.

\_\_\_ Add \$6.00 per book for handling and mailing.

\_\_\_ Kentucky residents add 6% sales tax.

**TOTAL \$ \_\_\_\_\_**