

WinTV-NOVA-TD WinTV-NOVA-T-Stick WinTV-NOVA-T-Stick SE Quick Installation Guide

©Hauppauge Computer Works, Inc. 2008 - QI-NOVA-T-STICK-V2.2-ENG - 2008/01/11

Hauppauge Computer Works, Ltd.
10 Borough High Street
Bank Chambers
London, UK, SE1 9QQ
www.hauppauge.co.uk

Tech Support: (+44) 0207 378 0202
Telephone: (+44) 0207 378 1997
Fax: (+44) 0207 357 9171
support@hauppauge.co.uk

Contents of this WinTV package

- WinTV-NOVA-T-Stick or WinTV-NOVA-TD unit
- USB extension cable (except WinTV-NOVA-T-Stick SE)
- Portable TV antenna with IEC connector (on some models)
- Portable TV antenna with MCX connector (WinTV-NOVA-TD only)
- IEC to MCX connector (WinTV-NOVA-TD only)
- Antenna Y splitter (On some models of WinTV-NOVA-TD only)
- IR remote control transmitter and 2 batteries (on some models)
- WinTV Installation CD-ROM including the following software components:
 - New WinTV v6 application
 - WinTV-Scheduler
 - 7 Day EPG
 - VTPUS
- This installation guide

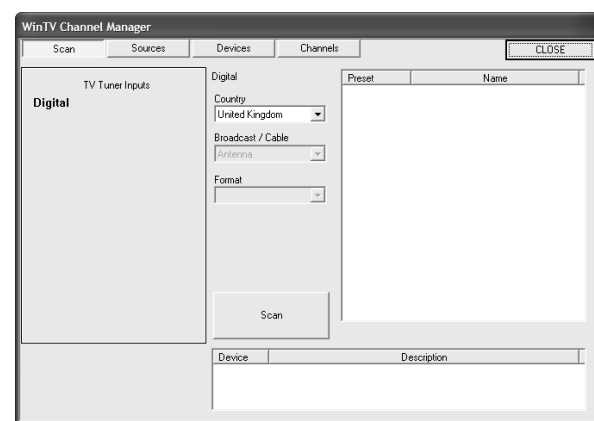
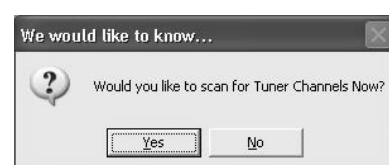


Page 1

4. New WinTV®v6 Application

To start the WinTV application, double click on the **WinTV icon**.

When you run WinTV for the first time, a message will appear asking you to scan for tuner channels now. Please ensure that the TV antenna is connected, click **YES**.



Select your country location, for instance, select United Kingdom and then, select Scan.

The scanning process for DVB-T will then scan for channels. When DVB-T channels are found they then will appear in the channel listing box.

Note: If you have attached an antenna and do not receive any digital TV channels, either use a stronger antenna (a roof top antenna is recommended for best reception) or try to add a TV channel manually (see trouble shooting section).

Click **Close** when finished.

Increase reception on WinTV-NOVA-TD (Diversity mode)

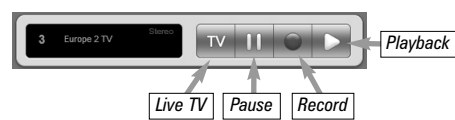
For the best TV reception in poor conditions, you need to use the WinTV-NOVA-TD and place the antenna in a suitable location. When you receive at least one channel, go to the WinTV channel manager, click on Sources and DVB-T source, to see Signal Status.

Unplug one of the antennas and move the other one to have the best quality level in Signal Status. Unplug this antenna and plug in the other one to now optimize this antenna. Antennas must be a slight distant apart for best result.

Page 5

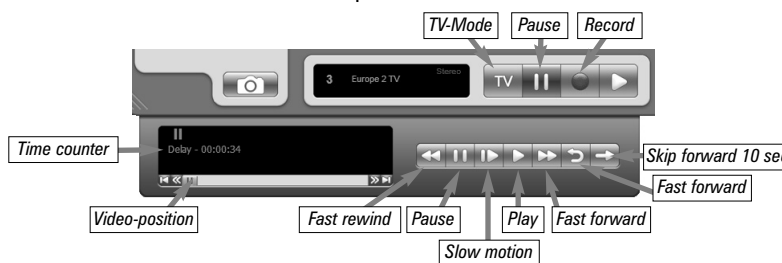
Pause, Record and Playback TV

There are four buttons to control the watching, recording, pausing and playback of TV. Clicking on the Pause button will cause the Pause menu to roll down from the WinTV application, while clicking on either the Record or Playback button will cause the Record menu to roll down. Click the TV button will close the roll down menus to close and for live TV to be displayed in the WinTV video window.



Pause mode

The pause mode allow you to pause the Live TV picture and allows you to use the TimeShift function to rewind and fast forward the TV. Clicking the **Pause** button on the WinTV application starts the **Pause mode**. The Pause Menu will drop down.



Pause Buffer

The Pause buffer is space on your hard disk where video is stored during the Pause mode. The maximum amount of time which your TV program can be delayed is dependent upon how much storage space you have set for the Pause buffer.

Clicking the Pause button will start recording into WinTV's Replay Buffer. It takes about 10 seconds for the Replay Buffer to be initialized and for Pause to become effective.

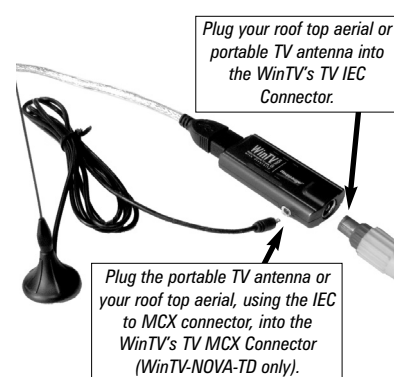
Unclicking the Pause button will cause the audio/video program to start playing from the point where the button was originally pushed. Most WinTV functions are active while in the Pause or Pause Live mode. For example, you can change volume, resize the TV window, go into "no-title mode", etc.

While in Pause mode, the Video Position bar shows the amount of the Replay Buffer which is filled with video. For example, if the Video Position indicator shows halfway, it means that half of the Replay Buffer is filled. If you find you cannot Pause as many minutes as you would like, increase the size of the Replay Buffer.

Page 9

1. Connecting the Aerial

WinTV-NOVA-T-Stick
Plug your roof top aerial or portable TV antenna into the WinTV's TV IEC Connector.



WinTV-NOVA-TD
The WinTV-NOVA-TD adopts the revolutionary Diversity technology which enormously improves mobile reception sensitivity when used with indoor antenna reception or while on the move. Diversity technology use two tuners and two antennas to create the clearest TV signal. Plug two antennas to the WinTV-NOVA-TD as describe here.

It is recommended that you connect to a roof top aerial as this may provide a better signal quality than the provided portable antenna. You will need to ensure that you are located in an area that has Digital Terrestrial coverage. Please visit www.dtg.org.uk/retailer/coverage.html
Sweden: www.teracom.se
Denmark: www.digi-tv.dk
Finland: www.digitiv.fi
Poland: www.emitel.pl

Note: If you do not receive channels using the portable antenna, try connecting to a rooftop aerial and scan again. If you then receive channels it means that the signal strength/quality in your area is too low to use with the small antenna.

2. Installing the WinTV-NOVA

1. Locate a free USB 2.0 port (normally located at the side or back on the computer). Due to power and bandwidth requirements, we do not recommend connecting the unit into a USB Hub.
2. Turn on your PC and wait until Windows has completely started.
3. Plug the WinTV-NOVA stick into the USB 2.0 port. You can use the USB extension cable to locate the WinTV-NOVA a short distance from the USB slot.

Note: If you plug the device into a different USB socket, you may need to reinstall the WinTV-NOVA driver, but you will not need to reload any WinTV applications.

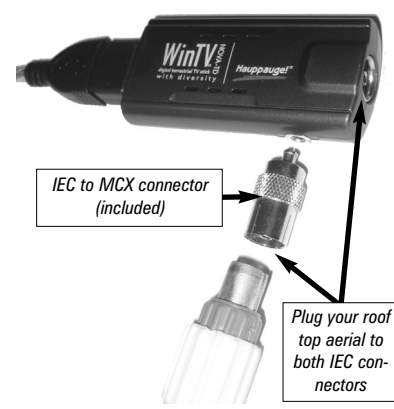
Page 2

The minimum signal level to engage the Diversity mode is just 3 blocks on each antenna. When plugging the two antennas, the quality level should then jump to the maximum.

Switching to Dual Tuner Mode (WinTV-NOVA-TD only)

You can also use WinTV-NOVA-TD in Dual Tuner mode, instead, to record one channel while recording an other.

For this, you must plug a good roof top aerial to both inputs of the WinTV-NOVA-TD (some cables might be required, not included).



Then, click on **Start / All programs / Hauppauge WinTV and Diversity Tool** and select **Use Dual Tuner Mode**. This disables the Diversity function. Click **OK** and restart your computer for your changes to take effect.



Once in Dual Tuner mode, WinTV-NOVA-TD can record two shows at the same time using WinTV-Scheduler and the **Record in Background** option.

The **Record in Background** option allows you to record your programs without the WinTV application present on your desktop. You must select this option at least for one of the two recordings; indeed the WinTV application itself cannot manage two recordings at the same time.

When background record start; a red bullet icon close to the Windows clock starts. You can end this record by a right click on this icon.

Page 6

While in Pause mode, the A/V stream is always saved in the Replay Buffer. To stop saving the A/V stream in the Replay Buffer, you must exit the Pause mode by clicking **TV mode**.

Replay

While in the Pause mode, hitting the **Replay** button acts like the Instant Replay you see on TV broadcast sporting events: the audio/video goes back in time and you repeat what you have previously seen. Each click of the Replay button causes audio/video to go back 10 seconds. For example, if you want to repeat the audio/video you saw 10 seconds ago, you would click the Replay button once. If you want to see the video you saw one minute ago, you would need to click the Replay button six times.

For extended replay times, you might find it more convenient to grab the Video Position indicator control bar and move it to the left. Once you let the control bar go, audio/video starts to play (it might take a few seconds for the WinTV application to start playing).

You might have to move the Video Position indicator to the left and right to find the desired spot to start replaying audio/video.

While Replaying, your audio/video program continues to be recorded in the Replay Buffer. Therefore, if you have clicked the Replay button 3 times (so that you are replaying the audio/video seen 30 seconds ago), the video you see in the WinTV window will be 30 seconds behind the live program.

Skip Ahead

Clicking the **Skip** button will skip the video ahead 10 seconds.

Rewind

Clicking the **Rewind** button while playing video will rewind the recorded video. Clicking the **Rewind** button again will continue the playing.

Slow Motion

Clicking the **Slow Motion** button while playing video will play in Slow Motion. Clicking the **Slow Motion** button again, will continue playing normally.

Fast Forward

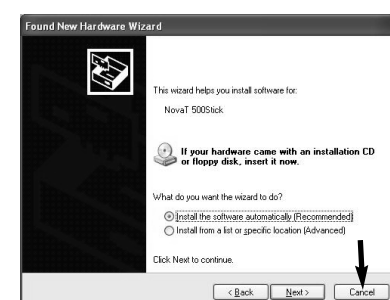
Clicking the **Fast Forward** button one time will fast forward your video at 2X speed. Clicking the **Fast Forward** button two times will fast forward your video at 8X speed.

Page 10

3. Install the WinTV Drivers and Applications

Note: If you have any anti-virus software enabled, please disable it during the installation of the software.

When you attach the WinTV-NOVA, the **Found New Hardware Wizard** will appear. Click on **Cancel**.



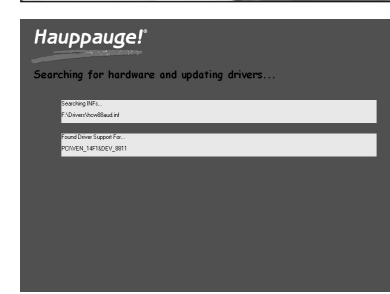
Insert your **WinTV Installation CD-ROM**, the installation window will automatically appear.

Note: If the autorun does not start, browse to the files on the disc and double click on the file called **'Setup'**.

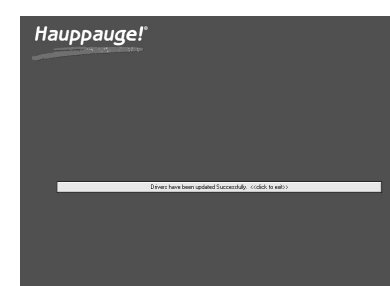


In the installation window click on **Step 1: Install WinTV Drivers**.

A blue screen will open which will begin installing and updating the drivers for your product.

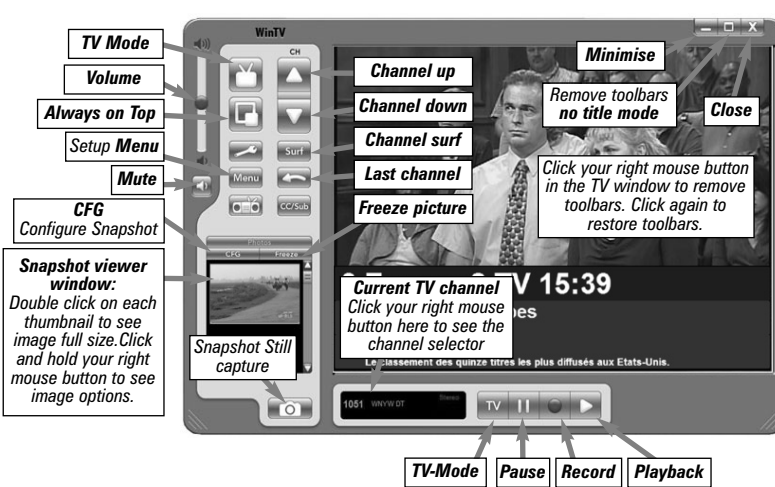


Once complete, a message appears in the bar. If this message is **Drivers have been updated Successfully**, click on the bar to exit. If the message reports an error, check the connection of your WinTV, or contact our technical support.



Page 3

Watch TV



Changing channels

You can change channels by using the **Channel Up** or **Channel Down** buttons on the WinTV. You can type a channel number (for example: 27) and WinTV will tune to that channel. If the entered channel does not exist, you will see a black window.

You can also right click in the Current TV channel box, where you will see a list of channels. Or type letters (for example: BBC) to access to the list of the channels including these letters.

TV Mode

When you click the **Full screen TV** button, TV will appear full screen on your PC monitor. When finished watching TV full screen, click your right mouse button in the TV window. If you see video with a black box around it, click the **Pref** button then click TV mode tab. Check the box which says "Allow resolution change".

"Always on top" Mode

The WinTV application will remain in view over any other applications even if it is not selected. To turn on, click the **Always on top** button. It will turn green. To turn off, click this button again. A convenient way to use Always-on-top is to make the TV window in the no-title mode small, and to make the TV window in the title mode larger. Then you can switch from a small window to a larger one by clicking the right mouse button.

Page 7

Record and Playback modes



Click the **Playback** button on the WinTV application to open the Record and Playback control bar. Clicking the **Record** will automatically generate a file name and start recording your audio/video program. If you click **Record** button more than once, a record timer will be set and the recording will be done for 15 minutes for each time the **Record** button is clicked. For example, if you click the button 3 times, the WinTV will record for 30 minutes.

Functions:

- When recording TV, the record button will be depressed
- A time counter will be shown indicating the length of time of the recording

If you click **Stop** the time counter will revert back to 00:00:00. The time is specified in a **Hour:Minute:Second** format.

Stop

Clicking the **Stop** button will stop the video you are recording or playing back.

Play

Clicking the **Play** button will playback from disk the last video file created. When playing a video, you can rewind, fast forward, replay 10 sec or skip forward 10 sec using the buttons on the control bar.

Pause

Clicking the **Pause** button while Playing will pause your audio/video.

Rewind

Clicking the **Rewind** button will play the video file in reverse. Clicking the **Rewind** button again will continue the playing of the video.

Fast Forward

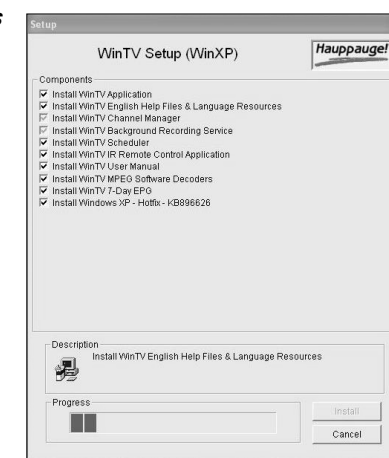
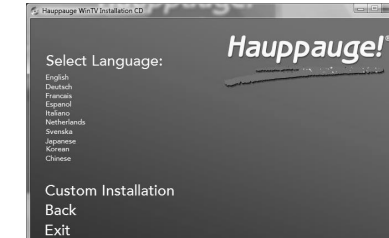
Clicking the **Fast Forward** button one time will fast forward your video at 2X speed. Clicking the **Fast Forward** button two times will fast forward your video at 8X speed. Clicking the button again will continue playing back at normal speed.

Page 11

Next, click on **Step 2: Install WinTV** and select your language from the list. The setup window should appear and begin to automatically install the WinTV applications.

Note: During the installation, other installation wizards may open, we recommend following the instructions in each of these and installing with the default options available.

Note: For advanced users you can select the **'Custom Installation'** which will allow you to modify the list of applications that are installed by default.



Once the WinTV installation is complete, click **OK** then **Exit** in the window "Hauppauge WinTV Installation CD". You should now be back at your Windows desktop.

Page 4

Pref button

Click the **Pref** button to open the preferences menu:

View: These are the settings for the On Screen Display of the TV channel and Audio Volume, where you can enable Close Captions (if supported in your system configuration), plus controls for the Toolbar mode (Title mode), NoToolbar mode (No Title) and Full Screen (TV mode).

Movies: Here is where you configure some video and audio settings. You can set the movie record directory (DVCR Record File Path).

Snapshot: Set the size of your captured images, plus single or two field captures for capturing motion or still image video.

Audio: Your audio settings are configured here.

Menu button

Click the **Menu** button to open the TV setup menu. Here is the main control bar for TV channels, and duplicate controls for other functions:

Suite-Manager: Configure the TV tuner (scanning, channel pre set, etc.) and setting up favourite channel lists.

Configuration: Duplicate configuration menus for colour, audio, etc.

View: For settings an exact TV window size: 320x240, 640x480 etc.

Page 8

Slow Motion

Clicking the **Slow Motion** button during playback will cause the video to play in slow motion (at 1/2 speed). Clicking the **Slow Motion** button again will return the video to normal playback speed.

File button

Clicking the **File** button opens the File menu. The last file recorded is listed in the File name box. In the File menu you can:

- **Rename your recorded video file:** To rename a video file, find the file you would like to rename, highlight it with your mouse, and click and hold the right mouse button. Go down to Rename and then you can type in a new name. Remember: you must keep the MPG extension on the file.

- **Play a video file previously recorded:** Find the file you would like to play, highlight it with your mouse (one click of the mouse button) and click Open. Then click the Play button.

- **Delete recorded video files which you no longer want:** Click your right mouse button on the video file once, go down the menu and click Delete.

Keyboard shortcuts

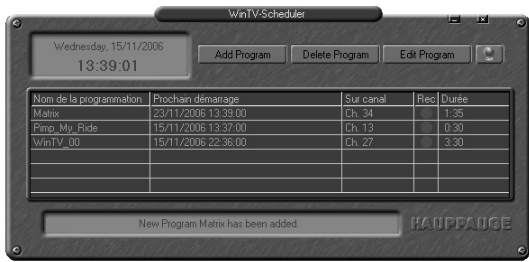
Sound up	- Page Up	Ctrl+M	- Mute on/off
Sound down	- Page Down	ALT+M	- Re-size TV menu
Plus (+)	- Channel Up	0-9	- Channel number
Minus (-)	- Channel Down	Space bar	- Take a snapshot
Ctrl T	- Frame TV	Ctrl F	- Still image
Ctrl P	- Frame print		

5. WinTV-Scheduler

WinTV-Scheduler allows you to schedule the recording of TV shows. WinTV-Scheduler, once it is set, can be closed, and the WinTV application will "wake up" at the desired time and tuned to the desired channel. After installation, WinTV-Scheduler can be found by going to **Start / Program files / Hauppauge WinTV**.

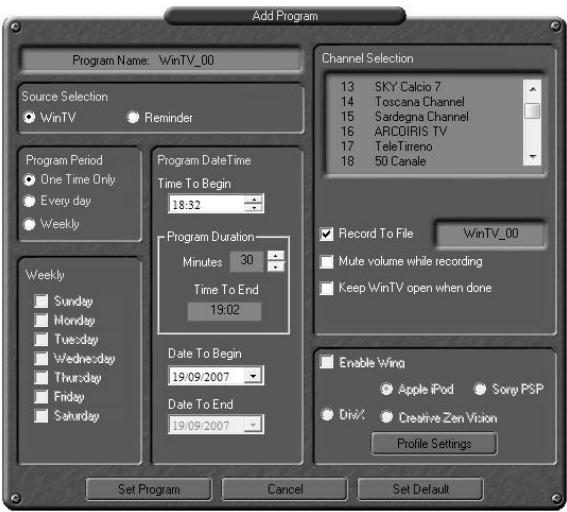
To set up an event for timed watching or recording, click on the **Add Program**.

Page 12



WinTV-Scheduler works by using the Windows Task Scheduler to launch WinTV at the chosen time. WinTV-Scheduler sets up a command line in Task Scheduler to run WinTV, specifying a TV channel and a length of time to record.

Note: You cannot access the Wing settings until you have purchased the optional transcoder software, for more information see www.hauppauge.com/wing. Please refer to the Wing manual for information on using the Wing settings.



The items that need to be set for each event are:

- **Source selection:** leave set at WinTV to bring up the WinTV at the requested time and on the requested channel. Select Reminder to just pop-up a text file as reminder.
- **Time to Begin Program:** set to the desired start time. The default time is about 3 minutes from the current time. Click on the hour to set the hour, the minute to set the minute to start the program.

7. Installing the Remote Control (on some models)

The WinTV's remote control software is installed automatically during the installation of the WinTV applications. The installation will add the shortcut "AutoStart IR" to the Start-up group. If this is not the case, you can manually install the WinTV's remote control software from the installation CD-ROM / IR32 folder. Double click on IR32.exe.

1. Insert the batteries into the **Infrared Remote control**.
2. Ensure the IR icon is on the start bar - **IR.exe** is loaded when Windows starts only if your WinTV is connected.

Note: If you don't see the WinTV Remote icon in the system tray or if you need to reset the remote control application, select "Restart IR" from the Start / All programs / Hauppauge WinTV directory. You should restart the IR program each time you plug your WinTV - except if it was plugged before Windows started.

Checking the function of the IR Remote

Make sure you see the black remote icon in the system tray (the area next to the clock in the taskbar).

Point the Remote transmitter at the Remote control receiver (the little eye on your WinTV Stick) and press the "Go" button. This should open the "WinTV Remote" menu. Press the "OK" button to start WINTV.EXE or use the "Up" and "Down" arrows on the remote to select another option.

Note: The WinTV application only responds to the remote control if it is the active window. If the WinTV application is not the active Window, press the TV button on the remote to bring the WinTV window into the foreground.

Note: If you have a Windows Media Center PC and you do not have a Media Center Remote you can use the Hauppauge Remote instead (the remote is not Media Center certified and some functionality may not be available).

Note: The credit card sized remote can be stored in a laptop's PCMCIA bay while not in use.

TV display has problems (e.g. no picture but with sound or blurred image)

With the WinTV application closed click on the WinTV program group (Start / Programs / Hauppauge WinTV) there is a utility called "Primary". Within Primary, select a different option from the main list of four items (Allow VMR/Allow Overlay/Force Primary/DIB Draw), close the application using the X in the top right hand corner then restart the TV program. Repeat this process for all four options to determine the best option for your computer.

"Error code 10" during installation

This is caused by a failure to load the WinTV-NOVA drivers. Uninstall the software (as above) and then follow the instructions from page 3. If this still give you an error message move the WinTV-NOVA to a different USB port and re-install the drivers again.

Under Windows XP Media Center application, I get the error message "Decoder Error"

This message is normally caused by missing or incorrectly installed MCE compatible DVD Decoder software. Please insure you have the latest MCE compatible DVD Decoder from one of the following recommended vendors: Cyberlink, Nvidia, Intervideo.

Note: It is always possible that your TV show will be transmitted in advance or late, and it takes about 10 seconds to launch the WinTV and set up for recording. Please set the Time to Begin Program few minutes before the time your TV show should start.

- **Program Duration:** set the duration of this event, using the arrows (steps of 30 minutes) or directly the keyboard. This will update the Time to End Program window.
- **Date to Begin:** today's date is the default. Change this if you want to schedule on another date.
- **Program Period:** One Time Only, Every day or Weekly are the choices. If you select the Weekly option, select the day you would have the show recorded too.
- **Date to End:** If you have selected the Every Day or Weekly option, you can specify the date at which it will stop this task.
- **Channel selection:** choose one of your scanned channels.
- **Recording options:** click on Record to File to record your show. Leave this button unchecked to watch TV at the requested time. You can also name your file to record.

Once these are set, click **Set Program**. You can add more Events, clicking **Set Program** after each event is set. When you are finished click **Close**.

The WinTV program does not have to be running for the Scheduler to work, but your PC needs to be either turned on, in Standby or in Hibernate Mode, but you should not be logged off. If WinTV is not running, it takes about 10 seconds to start WinTV and to start the recording of TV.

6. The 7 Day EPG

What is 7 Day EPG for WinTV

Certain digital DVB-T channels, along with their TV programmes, contain a TV channel guide. This guide is a listing of the programs being shown for the next 7 days, and includes the TV programme name, programme start times and length. The 7 Day EPG for WinTV extracts TV guide data from a DVB-T channel which contains this data. It creates a database on your computer.

When the Hauppauge 7 Day EPG opens up with its chart of times and TV programs, it reads the EPG database and formats the 7 Day EPG guide window. If you would like to record one of these TV programmes listed in the 7 Day EPG for WinTV window, you simply click the "Record" button and at the correct time your TV show will be recorded on your PC.

Remote Control Buttons

When watching live TV

Go: Open the "WinTV Remote" menu, allowing you to start the WinTV application

Power: Exit the WinTV application

TV: Bring WinTV to the foreground (if not currently active) / Full screen TV mode on/off

Arrows & OK: Select and confirm options in the WinTV Remote menu or the Windows task list.

Back/Exit: Stop a recording / Exit pause mode and close the Pause/Record tray (as the Stop button)

Menu: Brings up the Windows task list. Use the left and right arrows to change to other Windows tasks, and click OK. Menu is an always active button.

Vol+ and Vol-: Control the audio volume

Mute: Audio on/off

Ch+ and Ch- buttons: Select the next/previous channel

Prev.Ch: Swap to last viewed channel

Record button: Open the Pause/Record tray & start a recording. See section Remote Control Buttons during a Recording

Stop button: Stop a recording / Exit pause mode and close the Pause/Record tray (as the Back/Exit button)

Play button: Open the Pause/Record tray & play back the last recording. If you didn't record any TV shows recently, it will open the MyVideos folder. See section Remote Control Buttons during Pause TV or Playback

<< (**Rewind**): Swap between Title and No-Title mode

>>: Turn to Full screen TV mode

Pause button: Open the Pause/Record tray & pause live TV (pause mode). Clicking again will play from the point where the button was originally pushed

0-9: Direct access to channel number

Text (*): Start VTPlus teletext application (if installed)



Radio Interference Statement:

WinTV have been tested and found to comply with the limits for a Class B digital device, pursuant to part 15 of the FCC Rules. These limits are designed to provide reasonable protection against harmful interference in a residential installation. This equipment generates, uses, and can radiate radio frequency energy and cause harmful interference to radio communications. However, there is no guarantee that interference will not occur in a particular installation. If this equipment does cause harmful interference to radio or television reception, which can be determined by turning the equipment off and on, the user is encouraged to try to correct the interference by one or more of the following measures:

- reorient or relocate the receiving antenna.
- increase the separation between the equipment and receiver.
- connect the equipment into an outlet on a circuit different from that to which the receiver is connected.
- consult the dealer or an experienced radio/TV technician for help.

FCC ID: H90WINTV

CAUTION: Changes or modifications not expressly approved by the party responsible for compliance to the FCC Rules could void the user's authority to operate the equipment.

CE Statement: This equipment has been tested and complies with EN 55013, EN 55020 and IEC 801-3 part 3 standards.

How to use 7 Day EPG for WinTV

1. You should see an icon of a globe close to the Windows clock. Right click on this icon to give a list of options.



2. Select **Open Client Tool** to see the EPG Service window: It shows the status of the EPG service.

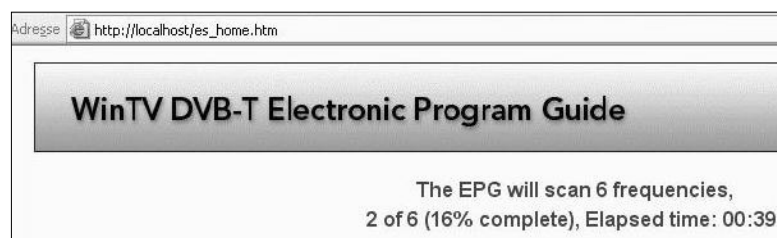
The buttons below the window give you the following controls:

- Start/stop the EPG Service
- Modify the current settings
- Open the EPG help file
- Exit the EPG application

To view the EPG guide click '**View EPG**' See Step 4 for more information.

3. Viewing the EPG information

From the EPG application window, click 'View EPG' this will open a web page showing the EPG information, initially the application will need to scan and update the EPG information. The amount of time it takes to read the data is related to the number of channels in your DVB-T transmission area. The more channels, the longer it takes to read all of the data, this may take several minutes:



Remote Control Buttons during a Recording

Note: Most WinTV functions and remote buttons are disabled when recording

Record button: Set the duration of the recording, by steps of 15 minutes up to 2 hours, then by steps of 30 minutes up to 4 hours. Clicking again will disable recording duration. This information is displayed in the Pause/Record tray.

Stop button: Stop recording and close the Pause/Record tray (as the Back/Exit button)

Pause button: Freeze the video. Press the Play or Pause button again to unfreeze the video. The Pause button has no effect on the recording itself. While the video is frozen, the recording is continued in the background, there is no Rewind, Forward, Skip, Replay function.

Remote Control Buttons when Pausing TV or Playing a Video

Note: You cannot change channels when Pausing TV

Record button: Stop current action and start a recording

Stop button: Stop playing or Exit pause mode and close the Pause/Record tray (as the Back/Exit button)

Play button: Play the recorded TV or TV from the pause buffer (if Pause/Record tray opened). Play and Pause button have alternatively the same function.

<< (**Rewind**): Play backwards at 8x speed. Clicking again will play paused TV or recorded TV at 1x

>> (**Forward**): Play forward at 2x speed. Clicking again will play forward at 8x, then back to 1x

Pause button: Start Pause-Mode (TimeShift). Press Play or Pause again to continue watching from where you left off

>1 (**Skip**): Skips ahead in the Pause buffer by 10 seconds per click. Holding the Skip button will auto-repeat, and advances the video about 10 minutes per 15 seconds the button is depressed

1< (**Replay**): Skips backward in the Pause buffer by 10 seconds per click. Holding the Replay button will auto-repeat, and advances the video about 10 minutes per 15 seconds the button is depressed

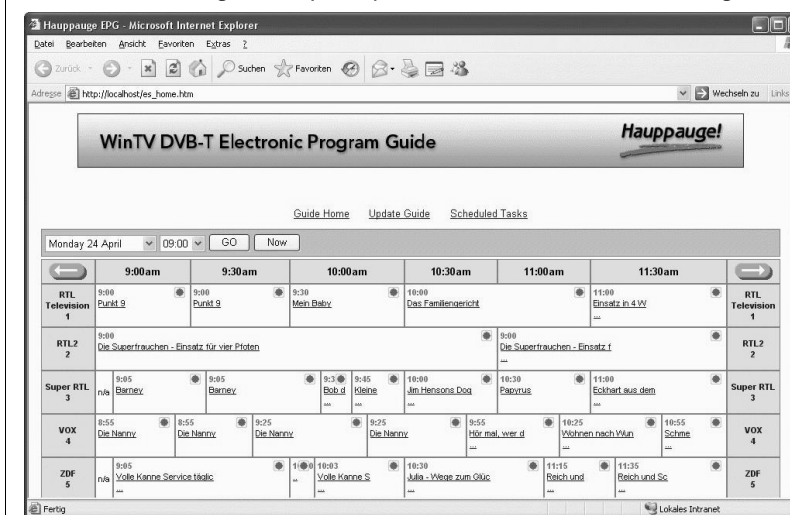
Quick Jump 0 to 9 buttons: When playing a video, you can quickly skip through the video by pressing the 0-9 buttons. When you press one of these buttons, you will skip to, for example, 10% of the video file when you press '1', 20% of the video file when you press '2' and so forth (% of the length of the file).

During Pause-Mode, any key skips ahead in the Pause buffer to -2 seconds.

Waste Electrical and Electronic Equipment (WEEE)

The device may not be disposed of with household rubbish. This appliance is labeled in accordance with European Directive 2002/96/EG concerning used electrical and electronic appliances (Waste Electrical and Electronic Equipment - WEEE). The guideline determines the framework for the return and recycling of used appliances as applicable throughout the EU. To return your used device, please use the return and collection systems available to you.

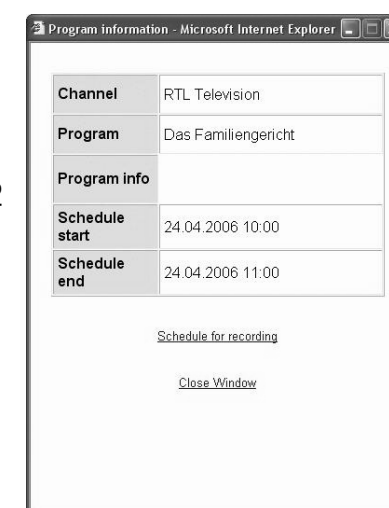
Once the scanning is complete you will be able to see the EPG guide:



4. Scheduling a recording

To schedule a recording, simply click on the Program title, this will give you more information about that program, from there you can click on '**Schedule for recording**', When you click a "record" button, the 7 Day EPG schedules a task to record your TV show from a DVB-T channel. The scheduled task is added to **Windows Scheduled Tasks**.

Note: You need to have a user name and password on your PC in order for the scheduled recordings to record through Windows Scheduled Tasks.



The scheduled recordings can be viewed and modified through the WinTV-Scheduler.

The format of the file name is [Programme title]_[Time]_[Date].mpg

Troubleshooting

To uninstall the Driver and Software

To uninstall the software simply run **hwclean** from the installation CD-ROM and select the last 2 options 'remove all WinTV drivers and applications (total removal)' and 'search all INF files'. If you now select **OK** a black screen will briefly appear and once it has disappeared the software will be removed. If you now re-start the computer you will be at Step 3 on page 3 of this document and can now re-install the software.

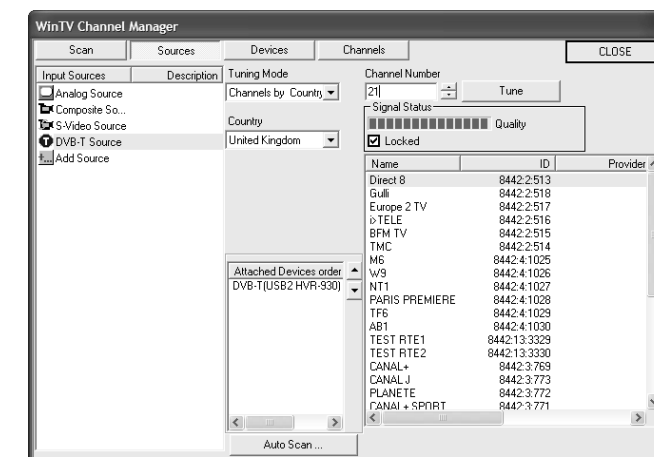
Only some channels are found during DVB-T channel scan

Check if there are transmitter works on your local transmitter here: www.bbc.co.uk/reception/transmitters/today.shtml as this could effect the reception of certain channel.

Adding a TV channel manually

If the scan did not succeed, you can add a channel manually by entering the LCN number for your local transmitter. Enter your post code in this link: www.wolfbane.com/cgi-bin/tvd.exe? to be presented with information on your local transmitters.

Note: Your local transmitter should be the closest transmitter with a H in the 'Pol' column. You need to write down the LCN numbers.



In the **WinTV Channel Manager**, click on **Sources then DVB-T Source**, enter the LCN numbers into the space under **Channel Number** and click on the **Tune** button. The channel number will then be scanned and any channels found will be listed in the channel list below.