



Anniversary-Catalogue 2016



1966.
We introduce barbecuing
to Germany.



Product sheets of the first barbecues in 1966



Our
beginnings ...

50 years of barbecue experience

In late 1965, the government of Ontario, Canada, sent me an invitation for the hardware fair in Toronto, which was to be held in February 1966. At that time, I was the chairman of a purchasing association of leading wholesalers of the hardware industry in West Germany.



With the best wishes of my fellow wholesalers and the mission to find "interesting and promising products", if possible for exclusive distribution in Germany, I set out on my tour.

I was thrilled when I discovered charcoal barbecues for the first time at the fair. Thus, I spontaneously ordered 30,000 devices – a vast number for me – with the vision and firm conviction to be one of the first to develop the barbecue market in Germany.

Upon return from the trip, I was disappointed to realise that my fellow wholesalers did not share my enthusiasm for barbecuing. So what to do with the devices?

On 20 September 1966, I founded the company Landmann GmbH for the sale of the 30,000 devices, hoping to develop the barbecue business in Germany. Over the past 50 years, this goal has been reached. Gradually, Landmann activities also started in Europe, the USA, Australia and East Asia.

I wish Landmann all the best and a lot of success for the future.

Bernd Hockemeyer

avalon

Gas barbecue kitchen
Gas wagon barbecues

Page 6-9

miton

Gas wagon barbecues

Page 10 -11

triton

Gas wagon barbecues

Page 14-15

heron

Gas wagon barbecues

Side 16

atracto

Lava rock
gas wagon barbecue

Side 17

*gas
roasters*

& accessories

Page 18-21

*urban
life*

Small barbecues

Page 24-27

smoker

& accessories

Page 30-34

dorado

Charcoal wagon
barbecues

Side 36

*black
taurus*

Charcoal wagon barbecues

Side 37

*Big
Landmann*

Charcoal wagon barbecues

Side 38-39

*black
pearl*

Charcoal wagon barbecues

Page 42-43

geos

Tripod barbecues

Side 44

Tripod barbecues
Pedestal barbecues
Stoves

Side 45

*collection
no.1*

Made in Germany

Page 46-53

*Fascinating
Fire*

Fireplaces

Page 52-53

*of heat
in the garden*

Patio heaters

Page 54-55

*Ambitious
barbecuing*

Accessories

Page 58-62

Light

Barbecue lamps

Side 63

*Steven
Raichlen*

Accessories

Page 64-65

*light &
veggie*

Accessories

Page 66-67

*american
BBQ*

Accessories

Page 68-69

*pure &
quality*

Tool set

Page 70-73

Various
accessories

Page 74-77

Covers

Accessories

Page 80-81

*Cleaning
& care*

Accessories

Page 82-85

*Spare parts &
technology*

Page 86-88

Lighters

Accessories

Page 90-91

Fuels

Accessories

Page 92-93

POS

Point of sale

Page 94-103

Keywords

Page 104-105

*Informa-
tion*

Side 107

www.landmann.com

avalon



avalon. There is no alternative to the best.

The premium range of LANDMANN gas barbecues excels with exquisite materials and perfect workmanship. The devices feature large cooking areas, additional infrared burners and the innovative PTS system for maximum efficiency.



LANDMANN **avalon PTS 6.1+**

Item no. 12780

- Thermometer in the lid
- Double-walled hood and front panel made of stainless steel
- Illuminated cooking area
- Including rotisserie with electric motor and two adjustable skewer holders
- Enamelled warming rack
- Cooking grills and hotplate made of enamelled cast iron
- Integrated digital thermometer for measuring the core temperature with sensor and preset measurement times
- LED-illuminated controls

- Electronic ignition
- Enamelled flame tamers
- 4 infinitely adjustable stainless-steel burners (3.8 kW each)
- Infrared bottom burner (4.4 kW) and infrared back burner (3.8 kW) for quick heating and skewer cooking
- Recessed side burner (3.5 kW)
- Enamelled firebowl
- Grease tray
- Granite work surface
- Tool and paper roll holders included
- Cabinet with 2 double-walled doors and handles made of brushed stainless steel
- Rubbish bin/ice bucket
- 4 smooth-running casters, 2 of which are lockable
- Cover included
- 100% pre-assembled



4 x 3.8 kW +
1 x 4.4 kW (infrared) +
1 x 3.8 kW (infrared) +
1 x 3.5 kW



Product: 152 x 119 x 68
Package: 158 x 127 x 75



18



91 x 45.5



4000810127801

* See page 107 for more information on the LANDMANN warranty



avalon PTS 5.1+

Item no. 12798

- Thermometer in the lid
- Double-walled hood and front panel made of stainless steel
- Including rotisserie with electric motor and two skewer holders
- Enamelled warming rack
- Cooking grills and hotplate made of enamelled cast iron
- Integrated digital thermometer for measuring the core temperature with sensor and preset measurement times
- LED-illuminated control knobs
- Electronic ignition
- Enamelled flame tamers
- 3 infinitely adjustable stainless-steel burners (3.8 kW each)
- Infrared bottom burner (3.8 kW) and infrared back burner (3,8 kW)
- Recessed infrared side burner (2.5 kW)
- Enamelled firebowl, grease tray
- Tool and paper tissue holders included
- Cabinet with 2 double-walled doors and handles made of brushed stainless steel
- 4 smooth-running casters, 2 of which are lockable
- Cover included
- 95% pre-assembled

88



3 x 3.8 kW +
2 x 3.8 kW (infrared) +
1 x 2.5 kW (infrared)



Product: 143 x 120 x 64
Package: 89 x 130 x 67



16



79 x 50.5



EAN 4000810127986



16



79 x 50.5



EAN 4000810127986



* See page 107 for more information on the LANDMANN warranty



avalon PTS 4.1

Item no. 12799

- Thermometer in the lid
- Double-walled hood
- Front panel made of stainless steel
- Enamelled warming rack
- Cooking grills and hotplate made of enamelled cast iron
- LED-illuminated control knobs
- Electronic ignition
- Enamelled flame tamers
- 4 infinitely adjustable stainless-steel burners (3.8 kW each)
- Recessed side burner (3.5 kW)
- Enamelled firebowl
- Grease tray
- Tool holder included
- Cabinet with 2 double-walled doors and handles made of brushed stainless steel
- 4 smooth-running casters, 2 of which are lockable
- 95% pre-assembled

66



4 x 3.8 kW +
1 x 3.5 kW



Product: 135 x 117 x 60
Package: 83 x 127 x 65



14



70.5 x 50.5



EAN 4000810127993



14



70.5 x 50.5



EAN 4000810127993



* See page 107 for more information on the LANDMANN warranty

miton



The American way. A great performance.

miton was originally developed for the US market, where it is very popular. The exquisite gas barbecue model series with its imposing design and cool stainless-steel appearance has started conquering the European market. A big winner in Germany as well!



miton PTS 4.1



Item no. 12660

- Thermometer in the lid
- Double-walled stainless-steel hood
- Electronic ignition
- Front panel made of stainless steel
- Stainless-steel warming rack
- Cooking grills made of enamelled cast iron
- Enamelled flame tamers, firebowl and grease tray
- 4 infinitely adjustable stainless-steel burners
- Recessed side burner (2.9 kW)
- Cabinet with 2 double-walled doors and handles made of brushed stainless steel
- 4 smooth-running casters, 2 of which are lockable

4 x 3.5 kW + 2.9 kW
 PTS System
 14
 70.5 x 45.5
 15707
 EAN 4000810126606

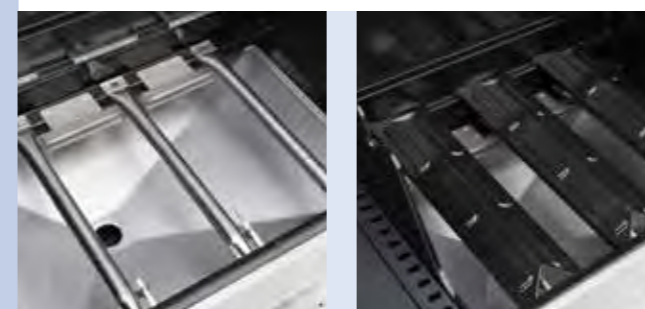


* See page 107 for more information on the LANDMANN warranty

miton PTS 3.1

Item no. 12652

- Thermometer in the lid
- Double-walled stainless-steel hood
- Electronic ignition
- Front panel made of stainless steel
- Stainless-steel warming rack
- Cooking grills made of enamelled cast iron
- Enamelled flame tamers, firebowl and grease tray
- 3 infinitely adjustable stainless-steel burners
- Recessed side burner (2.9 kW)
- Cabinet with one double-walled door and handle made of brushed stainless steel
- 4 smooth-running casters, 2 of which are lockable



46
 3 x 3.5 kW + 2.9 kW
 PTS System
 12
 59 x 45.5
 EAN 4000810126521
 15707
 Product: 116 x 133 x 62
 Package: 78.5 x 73.5 x 63.5

miton PTS 2.0

Item no. 12640

- Thermometer in the lid
- Double-walled stainless-steel hood
- Electronic ignition
- Front panel made of stainless steel
- Stainless-steel warming rack
- Cooking grills made of enamelled cast iron
- Enamelled flame tamers, firebowl and grease tray
- 2 infinitely adjustable stainless-steel burners
- Cabinet with one double-walled door and handle made of brushed stainless steel
- 4 smooth-running casters, 2 of which are lockable



42
 2 x 3.5 kW
 PTS System
 8
 48 x 40.5
 EAN 4000810126408
 15707
 Product: 116 x 123 x 62
 Package: 75 x 63 x 60

* See page 107 for more information on the LANDMANN warranty

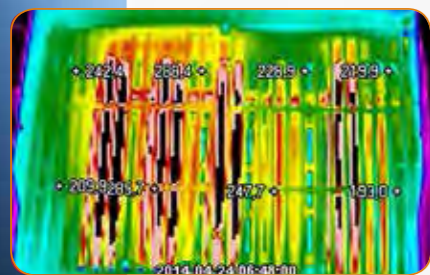
Gas BBQ information:



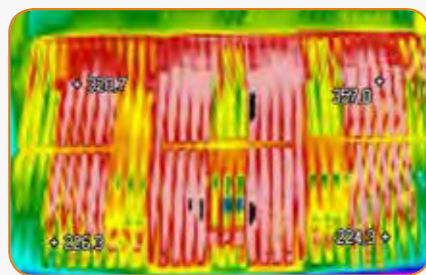
Optimum heat distribution.
Perfect control.

Thanks to the innovative PTS system, the energy from the burner is applied evenly and efficiently to the cooking grill. In this way, the risk of cold zones and heat blocks is eliminated. Thus, searing and precise indirect cooking become child's play.

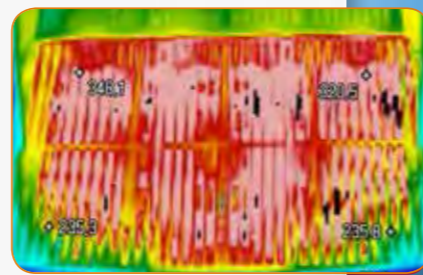
The internationally patented PTS system is available exclusively in the LANDMANN gas barbecue series avalon, mïton and trïton.



Competitor



Competitor B



LANDMANN PTS system

Great difference between the heat images: Heat distribution on conventional gas barbecues and a LANDMANN model with PTS system.
(independent testing institute, 2014)

Sizzling hot. Nice and juicy.

We have equipped the top models of the avalon range with additional infrared burners. This makes it even easier for you to prepare special food like steaks and rotisserie chicken.

Why so? This is because the special mode of operation of infrared burners. These devices work with electromagnetic energy, which only becomes effective when it impacts the food.

By activating infrared burners, temperatures of up to 750°C can be created, e.g. for preparing food that needs to be roasted for a very short time. Due to the intensive heat, the moisture barrier of the food can be preserved. As a result, the food does not dry out.

Thus, the unfailing formula for ambitious barbecue specialists is: infrared burners plus even heat distribution with PTS.



Quick starter. Get going with smart solutions.

LANDMANN gas barbecues are ready to use in no time, as the Piezo ignitions ensure instant lighting.

- The variant with the red button to actuate the ignition is a tried-and-tested classic.
- In the models with automatic ignition, the Piezo ignition is integrated in the control knob, enabling single-handed operation.
- The top equipment works electronically: A gentle click is all that is needed to let the spark plug of the burner generate sparks that ignite the gas immediately.



triton



Step into the premium class. Superb.

Meanwhile, the success of the triton gas barbecue has become proverbial. The "triton class" has achieved fame throughout Europe. This is no coincidence. With its PTS system, the triton series is the best way to enter the league of premium barbecues. This goes even for the two-burner model!



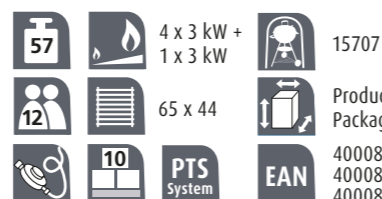
triton PTS 4.1



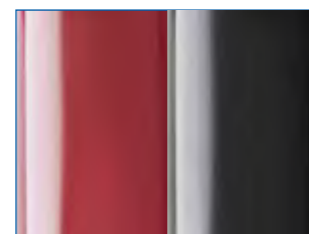
Item no. 12960 / 12961 / 12962

- Thermometer in the double-walled lid
- Integrated Piezo ignition
- Large enamelled warming rack
- Cooking grill made of enamelled cast iron
- 4 infinitely adjustable stainless-steel burners
- Recessed side burner (3 kW)
- Enamelled flame tamers and firebowl
- Grease tray
- Tool holder included

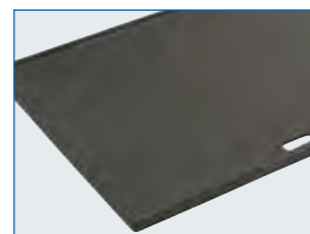
- Cabinet with 2 double-walled doors and handles made of brushed stainless steel
- 4 lockable casters



Product: 140 x 121.5 x 57
Package: 86 x 52 x 68
4000810129607 (silver)
4000810129614 (bordeaux)
4000810129621 (black)



Also available in bordeaux (12961) and black (12962).



Optional access for all triton gas wagon barbecues: Hotplate made of enamelled cast iron (13190/91), catalogue page 86.

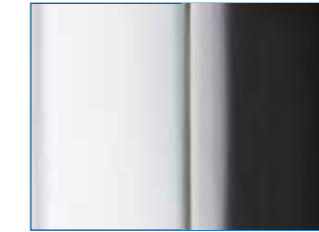
* See page 107 for more information on the LANDMANN warranty



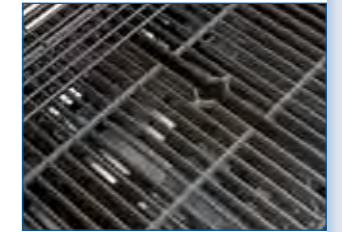
LANDMANN triton PTS 3.0

Item no. 12930 / 12931 / 12932

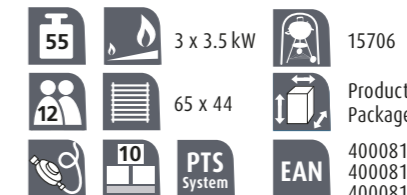
- Thermometer in the double-walled lid
- Integrated Piezo ignition
- Large enamelled warming rack
- Cooking grill made of enamelled cast iron
- 3 infinitely adjustable stainless-steel burners
- Enamelled flame tamers and firebowl
- Grease tray
- Tool holder included
- Foldable side shelves



Also available in silver (12930) and black (12932).



- Cabinet with 2 double-walled doors and handles made of brushed stainless steel
- 4 lockable casters



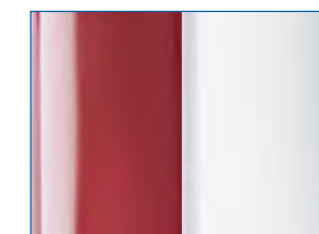
Product: 140 x 121.5 x 57
Package: 79 x 52 x 68
4000810129300 (silver)
4000810129317 (bordeaux)
4000810129324 (black)



LANDMANN triton PTS 2.0

Item no. 12901 / 12902 / 12903

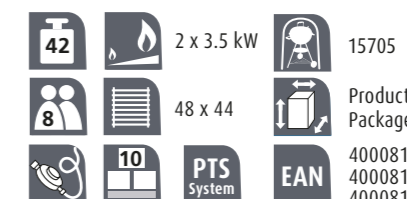
- Thermometer in the double-walled lid
- Integrated Piezo ignition
- Enamelled warming rack
- Cooking grill made of enamelled cast iron
- 2 infinitely adjustable stainless-steel burners
- Enamelled flame tamers and firebowl
- Grease tray
- Tool holder included
- Foldable side shelves



Also available in bordeaux (12902) and silver (12901).



- Cabinet with one double-walled door and handle made of brushed stainless steel
- 4 lockable casters



Product: 123 x 121.5 x 57
Package: 77 x 52 x 68
4000810129010 (silver)
4000810129027 (bordeaux)
4000810129034 (black)

* See page 107 for more information on the LANDMANN warranty

heron



NEW

LANDMANN heron 3.0

Item no. 12220

- Thermometer in the lid
- Powder-coated lid, side shelves and front panel
- Integrated Piezo ignition
- Enamelled warming rack
- Enamelled cooking grill
- Enamelled flame tamers
- 3 infinitely adjustable stainless-steel burners
- Grease tray
- Foldable side shelves
- Comfortable working level (85.5 cm)



3 x 3.5 kW



56 x 40



Product: 126 x 105 x 50
Package: 73 x 52 x 58



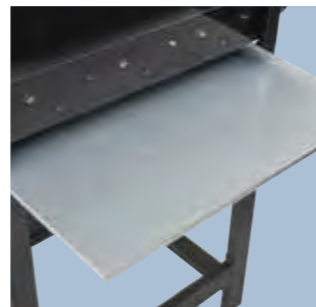
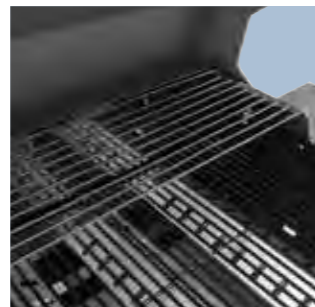
15705



10



EAN 4000810122202



LANDMANN atracto 2.1

Item no. 12442

- Twin use - can be used with or without lava rocks
- Burner made of aluminised steel, freely adjustable side burner
- Enamelled cooking grill and warming rack, thermometer in the lid
- 1 foldable side shelf including one tool holder



54 x 36



7 kW +
2.5 kW



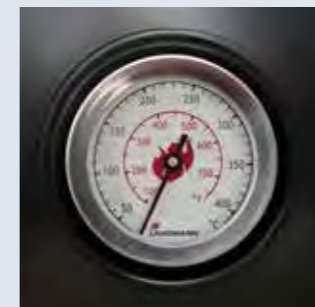
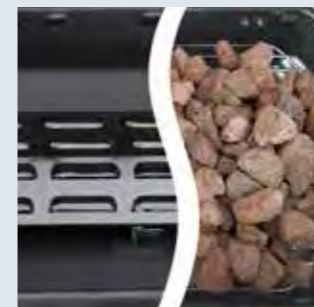
Product: 100 x 100 x 50
Package: 79 x 25 x 49



15701

EAN

4000810124428



LANDMANN atracto 2.0

Item no. 12441

- Twin use - can be used with or without lava rocks
- Burner made of aluminised steel
- Enamelled cooking grill and warming rack, thermometer in the lid
- 2 foldable side shelves with one tool holder



54 x 36



7 kW

Product: 100 x 100 x 50
Package: 79 x 25 x 49



15701



EAN 4000810124411



for *experts*
big and small



Gas roasters and more for experts big and small.
BBQ missions at large events, street festivals and sports associations:
Here too, customers rely on LANDMANN. Keyword "high performance under continuous load"
Thanks to the wide range of extensions and accessories, the equipment can grow as the need arises.



12430

- 4 infinitely adjustable cast burners
- Stainless-steel design, including double-walled firebowl, double-walled underframe and windshield
- Sturdy stainless-steel cooking grill (7.5 mm)
- Stainless-steel flame tamer
- 2 removable grease trays (stainless steel)
- Large drawer
- Lockable casters



Product: 86 x 114 x 62
Package: 92 x 36 x 71.5 + 92 x 25 x 62

Safety valve and hose failure safety device included

15706

EAN 4000810124305

0044123

- 2 infinitely adjustable gas burners
- Stainless steel enclosure
- Enamelled frying pan



55.5 x 6 x 46



Product: 69.5 x 27 x 58.5
Package: 71 x 27.5 x 57.5



2 x 5 kW



EAN 4000810441235



004413

- 3 infinitely adjustable gas burners
- Stainless steel enclosure
- Steel frying pan



55.5 x 6 x 46



Product: 69.5 x 27 x 58.5
Package: 71 x 27.5 x 57.5



3 x 4 kW



EAN 4000810044139



0044131

- Identical to item 004413
- Difference: Enamelled pan



55.5 x 6 x 46



Product: 69.5 x 27 x 58.5
Package: 71 x 27.5 x 57.5



3 x 4 kW



EAN 4000810441310



0044131M

- Identical to item 0044131
- Difference: Safety valve and hose failure safety device included



55.5 x 6 x 46



Product: 69.5 x 27 x 58.5
Package: 71 x 27.5 x 57.5



3 x 4 kW



EAN 4000810413102





00442 LANDMANN

- 3 infinitely adjustable gas burners
- Chrome-plated cooking grill
- Stainless-steel flame tamer
- Optional accessories: Enamelled frying pan (0044371, page 21)

00442M LANDMANN

- Identical to item 00442
- Difference: Safety valve and hose failure safety device included

3 x 4 kW 59.5 x 47.5 Product: 64.5 x 25 x 58.5 Package: 67 x 26.5 x 57.5 16,5 14 EAN 4000810044207 4000810044203



004474 LANDMANN

- Underframe for gas roaster
- Stainless-steel design
- Additional shelf included
- Suitable for all 2 and 3-burner gas roasters

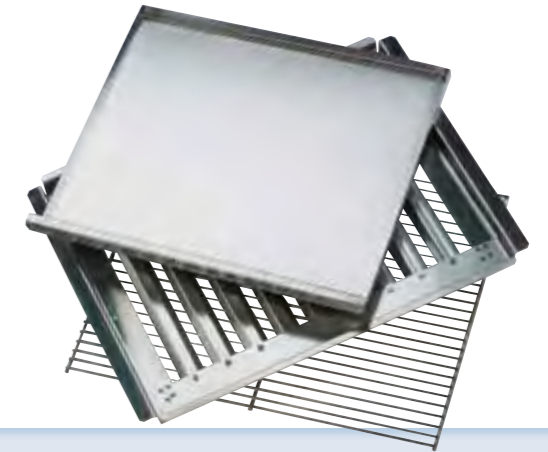
40 Product: 68 x 58 x 56 Package: 66.5 x 5 x 56.5 5 EAN 4000810044740



00444 LANDMANN

- Accessory set for gas roaster
- Chrome-plated cooking grill, stainless-steel flame tamer and grease tray
- Suitable for all 2 and 3-burner gas cookers on pages 19-20

8,5 59 x 46 57 Package: 65.5 x 5.5 x 52.5 EAN 4000810044405



0044371 LANDMANN

- Enamelled frying pan
- Suitable for the following gas roasters: 0044123, 004413, 0044131, 0044131M, 00442, 00442M (catalogue pages 19-20)

9 59 x 6 x 46.5 40 Package: 65.5 x 6.5 x 52 EAN 4000810044375



66 x 43 4 x 3.2 kW + 1 x 4.4 kW + 1 x 4.0 kW (infrared) Product: 220 x 120 x 60 Package: 156 x 128 x 69 12 149 1 5 EAN 4000810127504



12750 LANDMANN

- Thermometer in the lid
- 4 infinitely adjustable stainless-steel gas burners
- 1 recessed side burner, 1 infrared back burner
- Full stainless-steel design, including cooking grill and warming rack, flame tamer and grease tray made of stainless steel

- Cabinet with integrated cool box and double-walled doors
- Integrated wooden chopping board
- Smooth-running casters, 2 of which are lockable
- Sink with connection for domestic water supply
- Cabinet with plastic wastewater tank



* See page 107 for more information on the LANDMANN warranty

urban life information:

Trend topic: Barbecuing in the city. And on the road.

For LANDMANN, "summer in the city" also means "BBQ in the city". LANDMANN has developed compact models especially for city BBQ enthusiasts, which perfectly suit the modern lifestyle in an urban setting. At last, city dwellers are no longer forced to make compromises when it comes to barbecuing. These barbecues provide maximum BBQ fun while occupying a minimum of space.

LANDMANN's smart **balcony barbecues** are extremely space-saving. Enjoy a spontaneous BBQ evening on your balcony whenever good weather whets your appetite for tasty BBQ food.

- And if you plan on going to the park for some BBQ fun right after your university lecture, you might want to take along the handy **PortaGo** in your bag.
- A LANDMANN **compact gas barbecue** never lets you down: The never-failing choice for preparing that delicious steak that you would like to enjoy in the evening with an aromatic glass of red wine.
- If you prefer charcoal barbecues, you might opt for the **piccolino**, the tried-and-tested kettle barbecue for up to four persons, which comes with a chrome-plated warming rack. To make sure the device also appeals to your eyes, you can choose from numerous trend colours.

LANDMANN barbecues for city dwellers are available for every generation, every budget and every taste. Talking about taste: What actually is the difference between food cooked on a gas barbecue or on a charcoal barbecue?

"The BBQ story". Of the gas BBQ and the charcoal BBQ.

Story is told by Michael Hoffmann, multiple German BBQ champion.

"You can often hear people saying that only charcoal barbecues deliver the genuine barbecue flavour. But how would you like the taste of a chunk of charcoal? You don't want your food to taste like that, do you? -Joking apart, the typical BBQ flavour comes from the high cooking temperatures of 250 to 270°C. The typical roasting aromas develop (Maillard reaction), and the meat juice caramelises. These roasting aromas are what we perceive as the typical BBQ flavour. For this, it does not matter whether gas or charcoal is used as fuel."



urban life



Urban jungle. BBQ adventure.
For LANDMANN, "summer in the city" also means "BBQ in the city".
What can be more enjoyable than barbecuing with your friends on the balcony or in the close-by park?



LANDMANN 12058

- Portable gas barbecue for mobile use
- Thermometer in the lid
- Cooking grill made of enamelled cast iron
- Enamelled flame tamer
- Stainless-steel burner
- 2 removable side shelves
- Grease tray



3.5 kW

47 x 35.5



Product: 97 x 39 x 44
Package: 77 x 44 x 44



EAN 4000810120581

LANDMANN pantera 2.0

Item no. 12071

- Thermometer in the lid
- Lid made of die-cast aluminium
- Cooking grill made of enamelled cast iron
- Removable side shelves, can be stowed away in the barbecue
- 2 infinitely adjustable stainless-steel burners
- Electronic ignition
- Practical carrying handles
- Grease catcher with exchangeable drip pans
- Sturdy trolley included
- Gas cylinder (5 kg) can be stored below the barbecue



2 x 2 kW



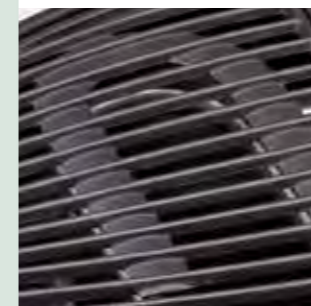
Product: 130.5 x 34 x 52.5
Package: 70 x 37 x 51.5



48.5 x 37.5



EAN 4000810120710



* See page 107 for more information on the LANDMANN warranty

LANDMANN 12900

Gas balcony barbecue

- Optimised **power+** burner technology
- Firebowl with removable grease tray
- Integrated enamelled flame tamer
- Piezo ignition
- Chrome-plated, dishwasher-safe cooking grill, 2-part
- With balcony holder for safe attachment
- Cartridge holder and cartridge connection included
- For use with threaded cartridge, optionally with Easy Clic cartridge and adapter
- Cover included



50 x 18.5
 2.5 kW
 Product: 50 x 21.5 x 25.5
 Package: 56 x 25 x 27
 EAN 4000810129003



LANDMANN 11900

Charcoal balcony barbecue

- Windshield with cooking grill height adjustment in 3 positions
- Cooking grill frame and 2 chrome-plated cooking grills, dishwasher-safe
- Firebowl with ash catcher
- Massive interior charcoal pan
- With balcony holder for safe attachment
- Cover included

48 x 18
 Product: 50 x 23.5 x 20.5
 Package: 56 x 18 x 22
 EAN 4000810119004



piccolino

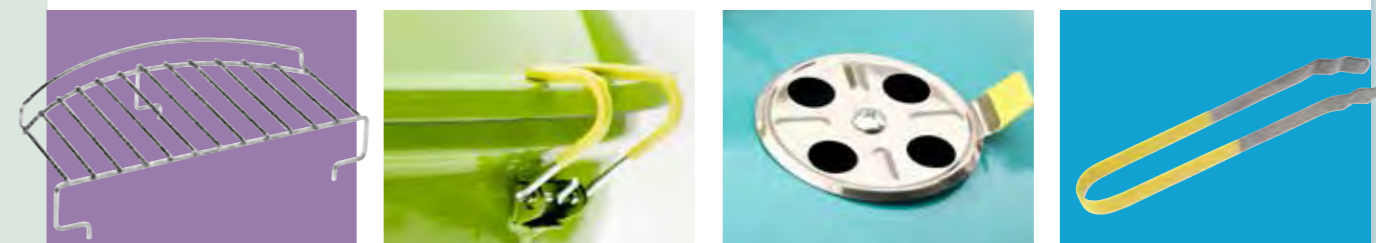


LANDMANN piccolino

Item no. 31381 / 31373 / 31373 / 31377 / 31378

- Enamelled lid and firebowl
- Chrome-plated cooking grill, chrome-plated frame construction
- Chrome-plated warming rack
- Stainless-steel tongs included
- Ventilation disc in the lid
- Rubberised lid clips for safe transport

Product: 38 x 41 x 38
 Package: 38.5 x 24 x 38.5
 EAN 31381: 4000810313815 (azure)
 31373: 4000810313730 (lime)
 31375: 4000810313754 (turquoise)
 31377: 4000810313778 (anthracite)
 31378: 4000810313785 (lavender)



Information on smokers:

Cooking with the smoker. The options.

Meat cooked with the "slow and low" art has an exquisite smoke aroma and is very tender. Of course, a smoker can also be used for food other than spare ribs and pulled pork. For example, it can be used for smoking fish and baking crispy pizza. The design of the LANDMANN smokers also enables use of the pit for classic direct and indirect cooking.

European BBQ, American BBQ Discover a new world of BBQ.

American BBQ is not the same as European BBQ. The two styles are worlds apart. The fundamental difference lies in the temperature and the meat chunks that are cooked. European BBQ usually means cooking small pieces at a temperature of 200 to 300°C. American BBQ is quite different. Larger chunks are cooked over an extended period using hot smoke alone.

The temperature for American barbecuing is 90 to 160°C.



LANDMANN smokers. Always in good shape.

Traditionally, smokers are cylindrical in shape, as they are usually made of steel tubes. This is also why they are often referred to as barrel smokers. As a general rule, the thicker the walls are, the better the heat can be stored and the lower the temperature fluctuations and wind sensitivity will be.



The smoker. Hot air for more aroma.

A smoker is a must for genuine American BBQ. Unlike conventional European barbecues, the device always consists of two chambers: the "side fire box" and the "pit", as they are called in the USA. The function of a classic offset smoker is simple, but effective: The heat generated in the fire box and the smoke pass through the pit and give the food the typical smoke flavour.

smoker



Smoking for all. From the smoker stove to the Tennessee 400

No matter whether you barbecue or smoke, your demand will grow with your success! LANDMANN offers smokers in various price classes. Our product range features suitable devices for all levels - from starter models to our top model Tennessee 400.

LANDMANN 15506

Tennessee smoker convection plate

- Massive steel plate (3.0 mm)
- Prevents flames from entering the cooking chamber
- More even temperature in the cooking chamber

Product: 71 x 35 x 3
Package: 71 x 38 x 3.5

EAN 4000810155064



LANDMANN 15507

Tennessee smoker lid holder

- To control the temperature and smoke development
- Suitable for all 16' smokers (Ø 40.6 cm)
- With spiral handle for heat protection

Product: 37.5 x 19.5 x 2.5
Package: 38 x 10 x 3.5

EAN 4000810155071



LANDMANN 15508

Tennessee smoker pot holder

- Massive pot holder
- Can be fastened to the fire box of the Tennessee 400 smoker
- Fastening with wing screw

Product: 37.5 x 41.5
Package: 46 x 4 x 26

EAN 4000810155088



LANDMANN 15804

Tennessee smoker rubber wheels

- Set consisting of 2 rubber wheels, suitable for the treads of Tennessee 300 + 400
- Protects the patio floor

Product: 40.5 x 8 x 1
Package: 42 x 42 x 3.5

EAN 4000810158041



LANDMANN tennessee 400

Item no. 11404

- Classic 16' smoker (cooking chamber and oven)
- Lid, firebowl and fire box with heat-resistant coating
- Firebowl and lid with 4.0 mm wall thickness (weight: 130 kg)
- Massive enamelled cooking grills
- Lid thermometer
- Hotplate on fire box at the side
- With cleaning flap
- 2 large steel wheels (16')
- Pot holder device
- Extensive range of accessories possible



Figure shows optional accessories

Product: 147 x 83.5 x 133
Fire box: 37 x 39
EAN 4000810114047

LANDMANN 14200

Dutch oven

- Classic Dutch cast-iron oven pot
- Can be used flexibly as smoker pot or as separate Dutch oven
- High lid edge for placement of briquets
- Versatile options: For cooking, baking, stews, frying and roasting
- Recipe suggestion: Delicious layered meat from the Dutch oven

Product: 37.5 x 41.5
Package: 46 x 4 x 26
EAN 4000810142002



tennessee 300



NEW

8 82 x 39
Fire box: 42 x 35

435 16

Product: 149.5 x 70.5 x 140
Package: 135.5 x 45 x 47

EAN 4000810114030

tennessee 300 LANDMANN

Item no. 11403

- Classic 16' smoker (cooking chamber and oven)
- Lid, firebowl and fire box with heat-resistant coating
- Firebowl and lid with 2.0 mm wall thickness
- Two-part enamelled cooking grill
- Thermometer in the lid
- With cleaning flap
- Front table
- 2 large steel wheels (16')



tennessee 200



NEW

16 66 x 37
Fire box: 23 x 32

33 10

Product: 130 x 125.5 x 68
Package: 78 x 43 x 24.5

EAN 4000810114023

LANDMANN tennessee 200

Item no. 11402

- Lid, firebowl and fire box with heat-resistant coating
- Large warming rack (60 x 18 cm)
- Enamelled cooking grill (3-part)
- Thermometer in the lid
- Height-adjustable charcoal grid with ash catcher
- With cleaning flap
- Front table
- 2 large steel wheels

tennessee 100



NEW

28 53 x 30
Fire box: 23 x 30

21,8 6

Product: 115 x 116 x 65
Package: 102.5 x 34 x 33.5

EAN 4000810114016

GRILL CHEF BY LANDMANN tennessee 100

Item no. 11401

- Thermometer in the lid
- Two-part enamelled cooking grill
- Additional cooking grill in the fire box
- Two-part charcoal grid
- Wide front table



11090 **LANDMANN**

Smoker

- Stainless-steel body
- Stainless-steel grill and 2 fish holders
- Thermometer in the door
- Smoking tray, powder-coated firebowl
- Ventilation discs for adjusting the air supply

17,5



36 x 31



Product: 54 x 101.5 x 48.5
Package: 43 x 80 x 38

12

EAN

4000810110902



11091 **LANDMANN**

Smoker

- Body with heat-resistant coating
- Stainless-steel grill and 2 fish holders
- Thermometer in the door
- Smoking tray, powder-coated firebowl
- Ventilation discs for adjusting the air supply

18,5



36 x 31



Product: 54 x 101.5 x 48.5
Package: 43.5 x 80 x 38

12

EAN

4000810110919



12093 **LANDMANN**

Gas smoker stove

- System with 2 drawers:
Wood chip and water refill possible without loss of stove temperature
Thermometer in the door, suspension device for food to be smoked
- 3 chrome-plated grills, grease tray
- Ventilation discs for adjusting the air supply

24



36 x 31
(3 x)



Product: 59 x 109 x 49
Package: 90 x 39 x 43

8



4 kW



EAN

4000810120932





dorado LANDMANN

Item no. 31401

- Painted lid and oven
- Thermometer in the lid
- Double-walled lid
- Large warming rack (54.5 x 22 cm)
- Enamelled cast-iron cooking grill
- Enamelled perforated charcoal tray, height-adjustable
- 2 sturdy side shelves, foldable
- Ash catcher

31 42 x 56 Product: 133 x 109 x 56
Package: 77 x 35.5 x 53.5
10 15705 **EAN** 4000810314010



black taurus
660



LANDMANN black taurus 660

Item no. 31421

- Painted lid and oven
- Thermometer in the lid
- Large warming rack (60 x 18 cm)
- Enamelled cooking grill (3-part)
- Height-adjustable charcoal grid
- Sturdy side shelf, removable
- Ash catcher



23 66 x 36 Product: 104 x 104 x 49
Package: 78 x 24.5 x 43
10 15705 **16** **EAN** 4000810314218

black taurus
440



LANDMANN black taurus 440

Item no. 31420

- Painted lid and oven
- Thermometer in the lid
- Large warming rack (40 x 18 cm)
- Enamelled cooking grill (2-part)
- Height-adjustable charcoal grid
- Sturdy side shelf, removable
- Ash catcher



19 44 x 36 Product: 81 x 104 x 49
Package: 58 x 27 x 43
6 15705 **24** **EAN** 4000810314201

Big Landmann

Origin of the kamado barbecue

- Japan / Asia
- Centuries-old tradition in preparing food in clay ovens
- Further development of the kamado idea in the USA

Fields of application

- Direct and indirect* cooking
- Stone-baked pizza
- Smoking
- Bread
- Cooking
- Slow cooking

Product benefits:

- Thick ceramic walls: Outstanding thermal insulation
- High-quality felt seal: Moisture remains in the barbecue = juicy, tender food
- Stainless-steel cooking grill (Ø 5 mm)
- 2 base shelves
- 20-year warranty on the ceramic body



Big Landmann LANDMANN

Item no. 11501

- Thick ceramic body, thermometer in the lid
- Cast-iron lid valve
- Stainless-steel cooking grill, cast-iron charcoal grid
- Additional stainless-steel cooking grill for a second level
- High-quality felt seal
- Wagon barbecue with two foldable side shelves
- 2 wheels, 2 casters



Ø 49.5
Ø 47.5



Product: 125 x 131 x 72
Package: BBQ (64 x 94 x 73),
wagon (54 x 83 x 21)



15706



EAN

4000810115013



* Possible with optional accessories

* See page 107 for more information on the LANDMANN warranty

Information on kettle BBQs:



In the ring: Here, a whole chicken is roasted indirectly at the centre of the ring of fire



Crescent: Sear on the left-hand side and continue cooking slowly on the right-hand side



Alley: Cook oblong pieces such as ribs at the centre



Eye: Suitable for warming on the edge

Also delicious. Direct and indirect cooking.

While direct cooking goes by the motto "short and hot", indirect cooking follows the "low and slow" principle. The main point consists of the entirely different cooking methods. Barbecuing is not only a question of the temperament.

Hot. And open.

As the word suggests, direct cooking means that the fire is directly under the cooking grill. The area over the fire gets really hot, enabling short cooking times. Even when applying the direct cooking method, BBQ champion Michael Hoffmann recommends setting up different BBQ zones for searing, cooking and warming. In the big LANDMANN kettle barbecue book (available in Germany only), he describes exactly how to do this. The barbecue is open at the top. In this way, the fast cooking process can always be monitored.

Low. And closed.

By contrast, the food and fire are offset for indirect cooking, i.e. the heat comes from the side. The food cooks gently in the hot air stream, similar to roasting in the oven, which of course takes a little bit longer. The meat is merely seared briefly over the glowing coals for a crispy outside and pleasant branding. Obviously, the indirect cooking technique only works in a closed system. Therefore, the lid of the kettle barbecue or hooded barbecue must remain closed. The temperature can be controlled by means of vents. Many devices are equipped with a thermometer in the lid. A charcoal starter, charcoal dividers and a tray for collecting excess fluid can be very useful.

One for all. The kettle barbecue.

Kettle barbecues combine the direct and indirect cooking techniques in a single device. Many use kettle barbecues mainly for indirect cooking. Additionally, LANDMANN has equipped the classic with its OptiHeat system for direct cooking. For example, the height-adjustable cooking grill can be used for keeping quick-roasted food or sausages warm in the waiting loop.



The alternative. Put a lid on it.

LANDMANN hooded barbecues are a viable alternative to conventional barbecues. Their square lid is fastened to the barbecue. Thus, it can easily be opened with a single move, without having to put the lid down as in the case of the kettle barbecue.

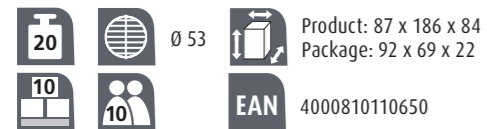


geos

LANDMANN

**Item no. 11065**

- Stainless-steel design, including firebowl, firebowl legs, barbecue bend and shelf
- Stainless-steel cooking grill, with safety edge
- Easy positioning of the height adjustment with ergonomic handle
- Space-saving storage of cooking grill, chain and handle in the firebowl; shelf serves as cover
- Includes peg for optional use as fire pit

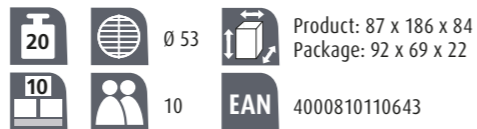


geos

LANDMANN

Item no. 11064

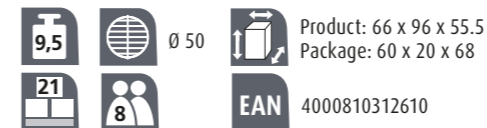
- Enamelled firebowl
- Powder-coated firebowl legs and barbecue bend
- Chrome-plated cooking grill with safety edge
- Easy positioning of the height adjustment with ergonomic handle
- Space-saving storage of cooking grill, chain and handle in the firebowl; shelf serves as cover
- Includes peg for optional use as fire pit

**LANDMANN 11063**

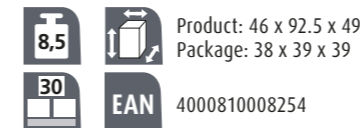
- Stainless-steel firebowl
- Stainless-steel tripod
- Chrome-plated cooking grill with safety edge
- Flexible height adjustment with chain
- Smooth-running chain hoist thanks to deflection pulley

**LANDMANN 31261**

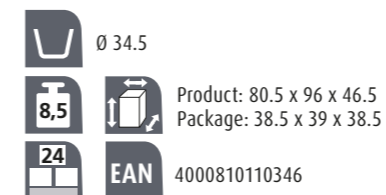
- Stainless-steel firebowl, windshield, pedestal and base
- Stainless-steel charcoal grid
- Chrome-plated cooking grill
- Easy cleaning thanks to ash catcher
- Ventilation control

**LANDMANN 0825**

- Removable pot and lid, enamelled
- Pot volume: 14 l
- Oven flue and scoop made of stainless steel
- Enamelled oven
- Removable ash catcher

**LANDMANN 11034**

- Enamelled oven, lid and chestnut pan
- Stainless-steel flue
- Removable ash catcher



Collection No.1



NEW

The exclusive Collection No. 1 Made in Germany.

The premium barbecues have been developed for experts who appreciate exquisite quality and durability. The limited editions are made in Germany from high-quality material and combine the best of high tech and workmanship. Every unit has the item number engraved on a stainless-steel plate.

MADE IN GERMANY

Perfection is always the sum of the individual components. In addition to selecting premium material, the workmanship at the production plant in Germany forms the basis for the **Made in Germany** quality seal.



Example:
Plate on a
hooded barbecue



LANDMANN 11500

Collection No. 1 hooded barbecue

- Made of premium stainless steel
- Lid with ventilation sliders on both sides, suitable for indirect cooking
- Thermometer in the lid
- Stainless-steel cooking grill, Ø 5 mm round bars
- Height-adjustable, warp-resistant charcoal bowl
- Bottom storage area
- Weatherproof wheels



LANDMANN 11000

Collection No.1 round barbecue

- Made of premium stainless steel
- Single-handed height adjustment of the cooking grill (Ø 50 cm, chrome-plated)
- Ventilation duct for improved burning behaviour of the charcoal,
- cooking grill can be swivelled on its mount
- Charcoal bowl with temperature control
- Height adjustable with flue effect



Join
the exclusive
**Collection No.1
Club**



11300

Collection No.1 pedestal/wok barbecue

- Made of premium stainless steel
- Cooking grill or wok pan height adjustable via a lever
- Charcoal bowl with ash catcher
- Ventilation slider for heat control
- Wok pan and cooking grill made of stainless-steel
- Replaceable wok pan and cooking grill

48 x 48 EAN 4000810113002
 Product: 60 x 82 x 48
 Package: 54.5 x 83.5 x 51
 61.5 x 70.5 x 21.5

Collection
No.1 members
get:

Opportunities to
participate in exclusive
**product
training**
with renowned
BBQ chefs

Sneak previews
of
**new
products**



11700

Collection No. 1 tripod barbecue

- Powder-coated black base frame
- Made of rolled steel, stainless-steel tube
- Chrome-plated cooking grill Ø 50 cm
- Firebowl Ø 60 cm
- Fireplace can be used separately

Ø 50 cm EAN 4000810117000
 Product: 60 x 152 x 65
 Package: 62 x 39 x 61.5 (carton 1)
 38.5 x 156 x 6.5 (carton 2)

11600 **11601**

Collection No. 1 wagon barbecue

- 11600 - made of premium stainless steel 11601 - painted version
- Chrome-plated cooking grill
- Height-adjustable charcoal bowl
- Easy installation
- Sturdy design

48 x 48 EAN 4000810116003
 Product: 96 x 75 x 64
 Package: 87 x 55 x 12
 4000810116010



Advantages
thanks to special
**customer
service**

Register now with your individual item
number at our website **LANDMANN /
Collection No.1 / Registration**

22100

Collection No. 1 fire column

- Made of 2-mm steel sheet with protective coating
- Punched motifs for a special flame appearance
- With ember catchment tray

EAN 4000810221004
 Product: 40 x 107 x 40
 Package: 46 x 106 x 39



Fascinating world of fire:

Mobile campfire. Sizzling romanticism.

They deliver cosy heat and a pleasant atmosphere and bring people closer on cool BBQ evenings. The LANDMANN fireplaces are available in diverse shapes and materials – some even with an additional cooking grill.



Open air. Open end.

Our patio heaters extend your garden season. They adorn the patio and balcony, and they provide heat at less cost and in a more eco-friendly way thanks to Smart Tech.



Fascinating world of fire



stars & moon LANDMANN

Item no. 11811

- Heavy steel design, painted black
- Cover with mesh for spark protection
- With surrounding carrying edge
- Punched out motifs create attractive light shapes
- Includes poker, also used for lifting the cover



Product: Ø 75 x 60
Package: 66 x 66 x 32

EAN 4000810118113

ball of fire

Item no. 11810

- Heavy steel design, painted black
- Surrounding mesh for spark protection
- Easy to open thanks to large side handles
- With enamelled firebowl
- Cover included



Product: 86 x 79.5 x 89.4
Package: 77.5 x 77.5 x 25

EAN 4000810118106

11804

- Stainless-steel panels and carrying rim
- Optimised design including wire mesh as spark shield
- Painted body and bottom
- Product partly pre-assembled
- Integrated log support for optimum arrangement of the logs



Product: Ø 55 x 69
Package: 60 x 60 x 22

EAN 4000810118045

11768

- Also suitable for barbecuing, with chrome-plated cooking grill
- Sturdy design (24 kg)
- Removable firebowl
- Painted ash catcher

Product: Ø 50 x 67
Package: 52 x 51 x 10

EAN 4000810117680



11760

- Also suitable for barbecuing, with chrome-plated cooking grill
- Removable enamelled firebowl
- Handles, painted ash catcher

Product: 55.5 x 65.5 x 50
Package: 37.5 x 37.5 x 7

EAN 4000810117604



Heat in the garden



flame tower

Item no. 12010

- Stainless steel construction
- Heat-resistant glass tube for flame guidance
- Adjustable flame height
- Electronic ignition
- With anti-tilt device



Product: 42.5 x 220 x 42.5
 Package: 54 x 136 x 32.5
 12.6 kW

EAN 4000810120109

LANDMANN **sirius**

Item no. 12047

- Stainless-steel design, including body and burner
- Adjustable aluminium reflector
- Infinitely adjustable gas supply
- With anti-tilt device
- Variable height adjustment through telescope function



185-220 mm



sirius
INOX

5-9.9 kW
 Product: Ø 75.5 x 220
 Package: 73 x 46 x 53

EAN 4000810120475

LANDMANN **12025**

- Stainless-steel stand and burner
- Aluminium reflector
- Piezo ignition, infinitely adjustable gas supply
- With anti-tilt device
- Shelf surface at convenient standing height (110 cm)
- Knob to fasten the shelf area
- Mobile side panels for changing the gas cylinder



5-9.9 kW
 EAN 4000810120253
 Product: 66 x 227 (Ø x H)
 Package: 62 x 44 x 120 (carton 1)
 65 x 32 x 44 (carton 2)

LANDMANN **12016ST**

- Stainless-steel design, including body and burner
- Aluminium reflector
- Piezo ignition
- Infinitely adjustable gas supply
- With anti-tilt device



30% less gas consumption
30% less carbon emission
with comparable heat output

5-9.9 kW
 Product: Ø 76 x 216
 Package: 73 x 46 x 53
 EAN 4000810120161



* Burners of these devices compared to a conventional 14 kW patio heater.

Information on BBQ diversity:

Professional equipment. Perfect result.

The right equipment makes the difference! Use the right tools to perfect your BBQ experience. LANDMANN's quality accessories are not to be missed – e.g. our professional "Made in Germany" barbecue knife, the marinade injector by Steven Raichlen and the jet flame lighter which can even be used for flambéing.

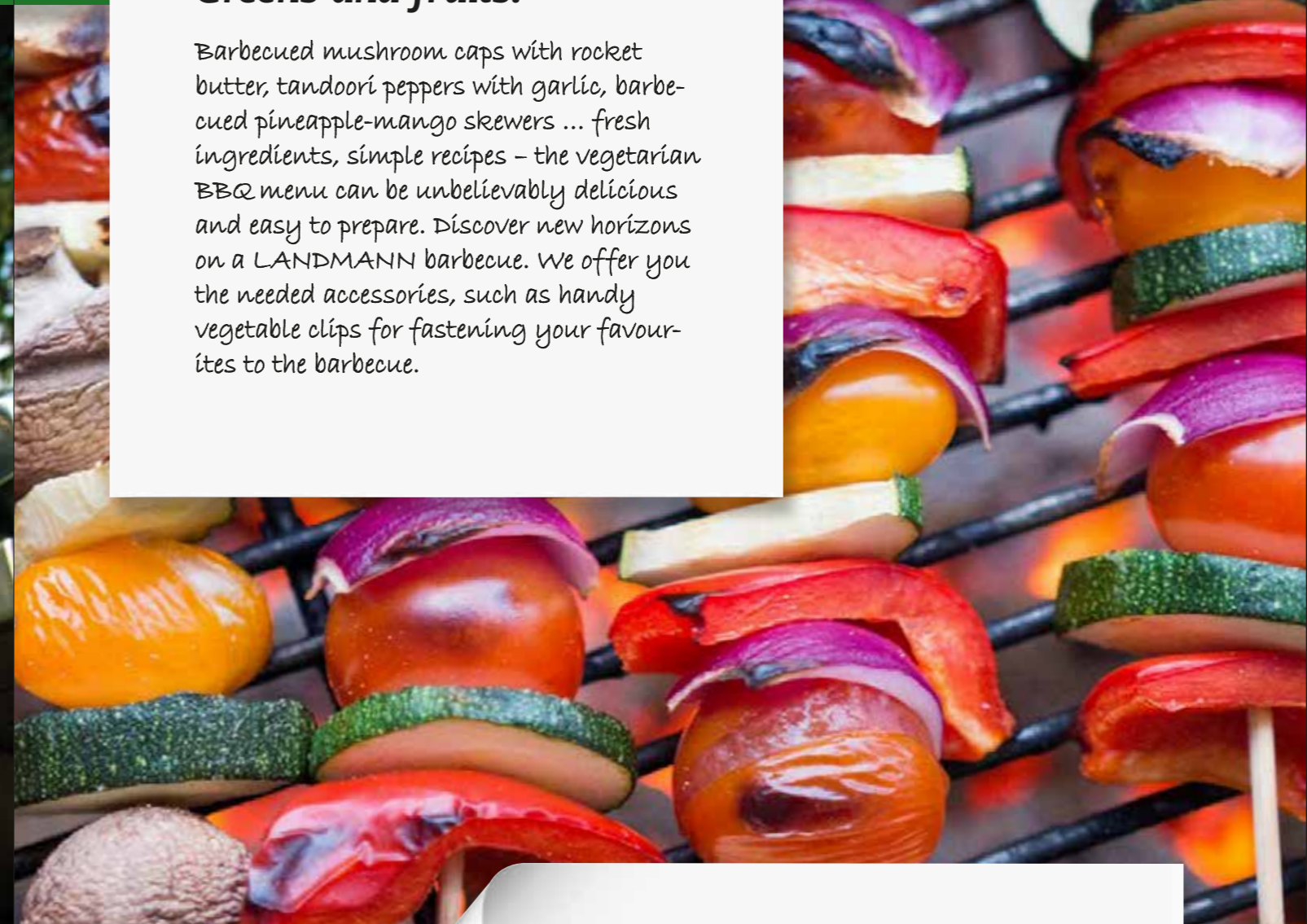
Light and veggie. Greens and fruits.

Barbecued mushroom caps with rocket butter, tandoori peppers with garlic, barbecued pineapple-mango skewers ... fresh ingredients, simple recipes – the vegetarian BBQ menu can be unbelievably delicious and easy to prepare. Discover new horizons on a LANDMANN barbecue. We offer you the needed accessories, such as handy vegetable clips for fastening your favourites to the barbecue.

Expand your culinary horizon. With Steven Raichlen.

Steven's TV BBQ shows are extremely popular, and his BBQ books are bestsellers.

LANDMANN offers selected accessories from the renowned BBQ expert – exclusively for the German market. BBQ enthusiasts will enjoy trying out some of the 500 best international recipes in the new edition of his bestseller "LANDMANN – The Original Barbecue Bible by Steven Raichlen" (available in Germany only).



Ambitious barbecuing



Professional equipment. Perfect result.



15505 

selection spare rib and roast holder

- Made of stainless steel, with 4 handles
- Can be used from both sides for roast meat and spare ribs
- Suitable for 6 spare ribs of a maximum width of 3 cm
- Colour carton

PQ 6

Product: 32 x 26 x 12
Package: 33 x 27.5 x 13.5

EAN 4000810155057



15502 

selection barbecue wok

- Made of enameled cast iron, for optimum heat distribution and storage
- For Asian dishes, paella and vegetables
- With flattened bottom for use on cooking grills
- Colour carton

PQ 4

Product: 44 x 37 x 12
Package: 38 x 38 x 12.5

EAN 4000810155026

 13442

selection chicken holder

- Made of stainless steel
- For aromatising poultry with marinades and liquids
- With 250 ml container and stable base
- Suitable for closed barbecues and ovens
- Instructions and recipe included (available for download)
- Colour carton with hanger

PQ 6

Product: Ø 10 x 12.5
Package: Ø 11 x 15

EAN 4000810134427



 15200

selection charcoal starter

- Made of stainless steel
- Also suitable for long-term use
- Large fill volume of 5.4 l
- Safe handling thanks to heat shield
- User-friendly use thanks to special handle shape
- Aluminised charcoal grid
- Colour carton

PQ 6

Product: 31 x 28 x 18
Package: 19 x 29 x 21

EAN 4000810152001



 13715

selection professional barbecue knife

- Made of premium blade steel 1.4116 (X 45 Cr Mo V 15)
- Made in Solingen, Germany
- With satinised, ergonomic stainless-steel handle
- No gaps, 100% hygienic
- Ideal for cutting raw meat, fish and vegetables
- Rounded edge for chopping herbs, onions and garlic
- Professional resharpening service, high-quality gift box
- Colour sleeve with Euro hole

PQ 6

Product: 4.5 x 34 x 2
Package: 8 x 37.5 x 4

EAN 4000810137152



Solingen
 Made in Germany


13712 LANDMANN

selection barbecue salt rock

- Genuine Himalaya rock salt
- For a tasty crust with a slightly salted nuance
- Multiple use
- Suitable for fish, prawns, poultry, steaks and vegetables
- Instructions and recipe included (available for download)
- Colour carton with Euro hole


 6 Product: 10 x 2 x 20
 Package: 14 x 27.5 x 3.5


EAN 4000810137121


14100 LANDMANN

selection barbecue lighter

- Made of metal, with storm-proof jet flame
- With ceramic burner
- Lighting from any angle
- Suitable for flambéing, refillable
- Colour carton with Euro hole


 12 Product: Ø 2.3 x 21.5
 Package: 5 x 27.5 x 3


EAN 4000810141005


13699 LANDMANN

selection pair of barbecue mittens

- One left and one right mitten made of breathable leather
- Top: Split leather, interior: cow grain leather, enables high finger mobility and a good grip
- Extra-long cuff for spark protection, highly heat-resistant
- Soft lining, comfortable to wear
- Colour header card with Euro hole


 6 Product: 17 x 36.5 x 2
 Package: 17 x 41 x 4


EAN 4000810136995


13725 LANDMANN

selection barbecue thermometer set

- Four stainless steel thermometers
- 2 thermometers for beef, 2 thermometers for poultry
- With space-saving ABS plastic holder system
- Cooking levels rare, medium and well-done (beef)
- Colour carton with Euro hole


 6 Product: Ø 2.6 x 6.8 (thermometer)
 4.5 x 6.3 x 2 (holder)
 Package: 9 x 9 x 3


EAN 4000810137251

LANDMANN 13625
selection radio thermometer

- Radio display module and sensor with transmitter
- Measurement of the core temperature, adjustable target BBQ temperature
- Automatic alert when the desired cooking level is reached
- Stopwatch and timer
- Battery-powered (4 x AAA batteries not included)
- Double blister


 Product: 6 x 12 x 2.5
 Package: 26 x 16.5 x 4


EAN 4000810136254


LANDMANN 13219
selection pizza set

- Foldable pizza peel made of stainless steel, with bamboo handle
- Pizza stone made of cordierite
- Ideal for stone-baked pizza, tarte flambée and bread
- Can be used on the charcoal and gas barbecue and in the oven
- For rectangular cooking grills (from 35 cm length/width) as well as round cooking grills (from Ø 44 cm), colour carton


 Pizza stone: 32 x 32 x 1.2
 Pizza peel: 24 x 0.9 x 54.2
 Package: 37 x 35 x 7.5


EAN 4000810132195


LANDMANN 13467
selection slicing table

- Convenient table with large removable cutting board
- Made of durable rubberwood, with groove
- Can also be use as service tray
- Foldable frame for space-saving storage
- Galvanised fittings
- Colour carton


 Product: 70 x 85 x 51
 Package: 98 x 7.5 x 67


EAN 4000810134670



13451

selection barbecue tongs

- Versatile tongs for different foods
- Slider for opening and closing the tongs with one hand
- Colour carton with Euro hole



PQ 10

Product: 49 x 6 x 5
Package: 50 x 10 x 7



EAN 4000810134519

13452

selection turner

- Rubberised handle bottom for safe use
- Improved ergonomics through optimised product design
- Colour carton with Euro hole



PQ 10

Product: 51 x 5 x 9
Package: 56 x 7 x 10



EAN 4000810134526

selection fork

- Rubberised handle bottom for safe use
- Improved ergonomics through optimised product design
- Colour carton with Euro hole

13453



RRP €18.99

PQ 10

Product: 51 x 3 x 4
Package: 56 x 10 x 7

EAN 4000810134533



selection skewers

- Separate handle piece prevents heat transfer
- Conical shape for easy attachment and removal of the food
- Colour carton with Euro hole

13454



RRP €18.99

PQ 10

Product: 51 x 2 x 3
Package: 56 x 10 x 7

EAN 4000810134540



13455

selection brush

- Power grip: The special product design allows you to use your other hand for vigorous cleaning
- Grill scraper for thorough cleaning



PQ 10

Product: 37 x 8 x 8
Package: 42 x 10 x 9



EAN 4000810134557

13456

selection spare brushes

- Set of 2
- Spare brass brushes
- Colour carton with Euro hole



PQ 10

Product: 8 x 3 x 4.5
Package: 8.5 x 12.5 x 3.5



EAN 4000810134564

Light



LANDMANN 16100

lights barbecue lamp with 12 LEDs

- With massive threaded holder for attachment to side shelves, alternatively with magnetic fastening
- 12 LEDs
- Aluminium, chrome-plated
- Flexible swan neck, 60 cm length
- Battery-powered (3 x AAA 1.5 V batteries not included)
- Double blister in display

Product: 9.5 x 81 x 10.5
Package: 28.5 x 61.5 x 13

PQ 6

EAN 4000810161003



LANDMANN 16101

lights barbecue lamp with 9 LEDs

- With universal clamp for horizontal and vertical areas
- 9 LEDs
- Flexible swan neck, 30 cm length
- Plastic, chrome-plated
- Battery-powered (3 x AAA 1.5 V batteries not included)
- Double blister in display

Product: 11 x 52 x 5
Package: 25.5 x 42 x 13

PQ 6

EAN 4000810161010



LANDMANN 16102

lights barbecue lamp with 10 LEDs

- Can be screwed to lid handles
- 10 LEDs
- ABS plastic
- 360° swivelling and 180° tiltable lamp head
- Battery-powered (3 x AA 1.5 V batteries not included)
- Double blister in display

Product: 7.5 x 26 x 3.5
Package: 22 x 57 x 13

PQ 6

EAN 4000810161027



Steven Raichlen

the BBQ expert



- Successful author, e.g. The Barbecue Bible (5 million copies printed)
- Three TV series of his own in the USA and in Germany
- Founder of the Barbecue University
- Various awards, including 3 IACP awards

LANDMANN 45100

Barbecue Bible by Steven Raichlen

- 560 pages
- Bundle consisting of the book and e-book (German edition)
- The US barbecue star introduces his 500 top recipes from all over the world
- Shrink

Product: 21 x 23.7 x 4

EAN 9783848008629



13754 LANDMANN

worldwide selection

XXL smoking plank set

- Made of cedar wood, 2 units per package
- Can be used over and over again
- With suitable BBQ spice for versatile use
- For a mild smokey aroma of the food
- Instructions and recipe included (available for download)
- Shrink, with printed insert

PQ 6 units Product: 17.5 x 35.5 x 1.5
Package: 17.5 x 38 x 2.5

EAN 4000810137541



13757 LANDMANN

worldwide selection

Meat and poultry shears

- Made of stainless steel
- With bakelite handles
- Sturdy, made from one piece
- Handle ends with safety lock
- Colour carton with Euro hole

PQ 6 units Product: 4.5 x 25 x 1.5
Package: 6 x 29.5 x 2

EAN 4000810137572



13758 LANDMANN

worldwide selection

Marinade injector

- With 6 cm stainless steel tip
- Removable for cleaning
- For injecting marinades into meat, poultry and fish
- Instructions and recipe included (available for download)
- Colour carton with Euro hole

PQ 6 units Product: 3.7 x 15 x 2.5
Package: 9.5 x 26.5 x 4.5

EAN 4000810137589

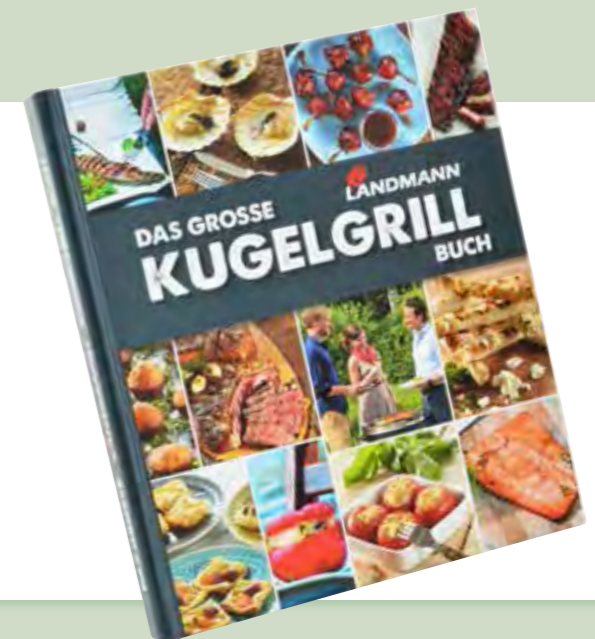


LANDMANN 18756

The comprehensive LANDMANN kettle barbecue guide

- 240 pages
- Conveys basic techniques, useful accessories and tips and tricks
- 111 delicious, uncomplicated BBQ dishes by German BBQ champion Michael Hoffmann
- Shrink

Product: 22.5 x 26.0 x 2 EAN 4000810187560



Light & veggie



15503 LANDMANN

selection vegetable basket

- Made of stainless steel
- For cooking vegetables and smaller foodstuffs
- With perforated bottom and sides for intensive heat
- Colour sleeve in the display

PQ 6 units

Product: 38 x 30 x 6.5
Package: 38 x 30 x 6.5

EAN 4000810155033

LANDMANN 13718

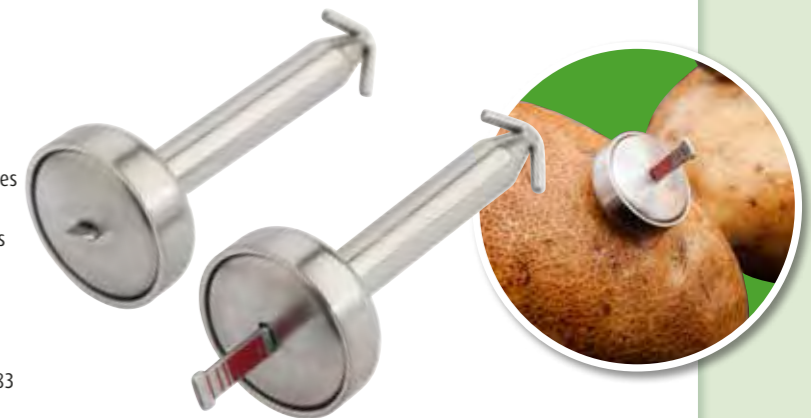
selection potato thermometer

- 2 units per package
- Indicator function shows that the potatoes are cooked when it protrudes from the housing
- The thermal conductivity of the sensor accelerates the cooking process
- Colour carton with Euro hole

Product: 2 x 5 x 2
Package: 11 x 9 x 2.5

PQ 6

EAN 4000810137183



13711 LANDMANN

selection mini barbecue pans

- Comprises: 2 stainless-steel mini pans and 4 bamboo scrapers
- For cooking small food pieces, vegetables or cheese together
- Surface-friendly scraper can be used as handle and for emptying
- Instructions and recipe included (available for download)
- Colour carton with Euro hole

PQ 6 units

Product: 12.7 x 19.6 x 23 (mini barbecue pans)
4.4 x 14.9 x 1 (bamboo scraper)
Package: 14 x 24 x 3.5

EAN 4000810137114

pure fish holder

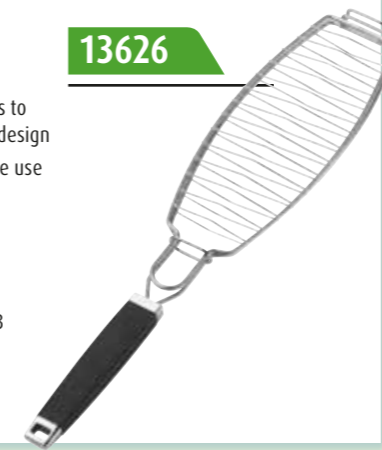
13626

- Made of stainless steel
- Comfortable to use thanks to ergonomically optimised design
- Rubberised handle for safe use
- Double blister

PQ 6 units

Product: 55.5 x 12 x 3
Package: 62 x 16 x 3

EAN 4000810136261



pure skewers

13632

- Made of stainless steel
- With movable extractor
- Triangular blade shape prevents the food from slipping
- Ergonomically optimised design
- Double blister

PQ 5 units

Product: 40.5 x 2 x 1.5
Package: 48 x 12 x 3

EAN 40008100136322



selection veggie clips

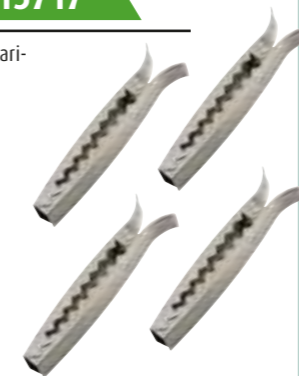
13717

- Made of stainless steel
- For fastening individual vegetable variations on the barbecue
- Instructions and recipe included
- Colour carton with Euro hole

PQ 6 units (4 units per package)

Product: 3.7 x 15 x 2.5
Package: 14 x 21 x 3

EAN 4000810137176



selection smoking planks

13956

- Made of cedar wood
- 2 units per package
- Can be used over and over again
- For a mild smokey aroma of the food
- Shrank with printed insert, Euro hole, colour display

PQ 12 units

Product: 14 x 30 x 1
Package: 14 x 30 x 2

EAN 4000810139569



0252 LANDMANN

Barbecue tray

- Enamelled
- Dish-washer safe
- Colour carton with window and Euro hole

PQ 20 units

Product: 32.5 x 24.5 x 2
Package: 35 x 25 x 3

EAN 4000810002528

American BBQ



13952 LANDMANN

JIM BEAM® smoking chips

- Made of real oak barrels
- Enhances the food with the typical JIM BEAM® aroma
- Fill quantity approx. 720 g (approx. 2.3 l)
- Instructions and recipe included (available for download)
- Colour carton
- Attractive secondary placement in ¼ CHEP display

PQ 6 units Package: 18 x 27 x 7.5 EAN 4000810139521

LANDMANN 13955

selection smoking chip set

- Ready to use, aluminium box with aperture
- 4 different wood types per package
- Hickory, mesquite, apple and cherry
- For enhancing your barbecue food with a smokey aroma
- Colour carton with Euro hole

Product: Ø 8.7 x 5.5 Package: 9 x 24.5 x 9 PQ 6 units EAN 4000810139552



13953 selection smoking chips cherry

- Made of cherry wood
- Fill quantity 450 g (approx. 2 l)
- Colour carton
- Attractive secondary placement in ¼ CHEP display

PQ 8 units Package: 18 x 27 x 6.5 EAN 4000810139538



13954 selection smoking chips alder

- Made of alder wood
- Fill quantity 500 g (approx. 2 l)
- Colour carton
- Attractive secondary placement in ¼ CHEP display

PQ 8 units Package: 18 x 27 x 6.5 EAN 4000810139545




LANDMANN 13710

selection hamburger press

- Made of cast aluminium, with non-stick coating
- With plastic handle
- With grooved surface for faster cooking
- Instructions and recipe included (available for download)
- Colour carton with Euro hole

Product: Ø 12 x 8.2 Package: 14 x 17 x 4 PQ 6 units EAN 4000810137107



13958 selection smoke box

- Made of stainless steel
- For smoking with wood chips, wood pellets or wood dust
- For gas and charcoal barbecues
- Capacity approx. 700 ml
- Colour carton

PQ 6 units Product: 10 x 27.5 x 4.5 Package: 11 x 31 x 4.5 EAN 4000810139583



13950 smoking sawdust

- 1 kg beech wood smoking sawdust
- Low humidity content guarantees steady smoldering
- Made in Germany

PQ 6 units Package: 26 x 20.5 x 8 EAN 4000810139507




LANDMANN 13709

selection American burger set

- Made of ABS plastic
- For filled hamburger patties
- Suitable for XXL-size burgers
- With a removable bottom for easier removal of the patties
- Includes an illustrated burger recipe book
- Colour carton with Euro hole

Product: Ø 13.4 x 7 Package: 16 x 24.5 x 8 PQ 6 units EAN 4000810137091



13620**pure brush**

- Made of stainless steel
- With stainless-steel bristles
- With stainless-steel scraper
- Comfortable to use thanks to ergonomically optimised design
- Rubberised handle for safe use
- Double blister



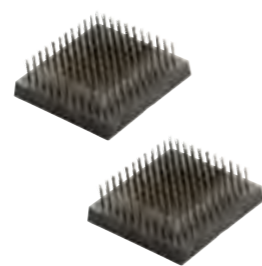
PQ 6 units

 Product: 42 x 7 x 9
 Package: 50 x 14 x 8.5

EAN 4000810136209

13634**pure spare brushes**

- Set of 2
- With stainless-steel bristles
- With 8 spare stainless-steel screws
- Suitable for barbecue brush pure (item no. 13620)
- Blister



PQ 6 units

 Product: 9 x 10 x 3
 Package: 13 x 28.5 x 3.5

EAN 4000810136346

13626**pure fish holder**

- Made of stainless steel
- Comfortable to use thanks to ergonomically optimised design
- Rubberised handle for safe use
- Double blister



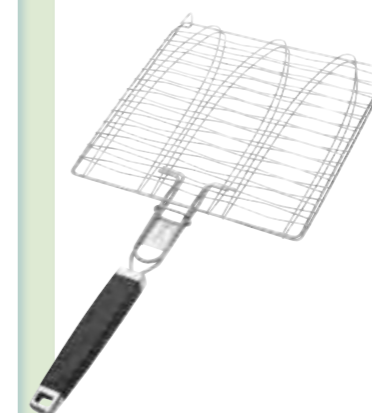
PQ 6 units

 Product: 55.5 x 12 x 3
 Package: 62 x 16 x 3

EAN 4000810136261

13627**pure fish holder, triple**

- Made of stainless steel
- Comfortable to use thanks to ergonomically optimised design
- Rubberised handle for safe use
- Double blister



PQ 5 units

 Product: 56 x 28 x 2
 Package: 62.5 x 28 x 3

EAN 4000810136278

pure turner

- Made of stainless steel
- Ergonomically optimised design
- Rubberised handle for safe use
- Double blister

13621

PQ 6 units

 Product: 42 x 9.5 x 5
 Package: 51 x 14 x 6

EAN 4000810136216

pure basting brush

- Stainless steel, with silicon bristles
- Ergonomically optimised design
- Rubberised handle for safe use
- Double blister

13622

PQ 6 units

 Product: 39.5 x 5 x 5
 Package: 47 x 11 x 6

EAN 40008100136223

pure barbecue roaster

- Made of stainless steel
- Includes 4 metal rings (3 x 11.5 cm) for 4 hamburger patties
- Extra wide, suitable for American burger patties
- Rubberised handle for safe use
- Double blister

15400

PQ 6 units

 Product: 57 x 26 x 3.5
 Package: 63 x 26 x 3.5

EAN 4000810154005

pure vegetable basket

- Made of stainless steel
- Removable handle enables barbecuing when the lid is closed
- Comfortable to use thanks to ergonomically optimised design
- Rubberised handle for safe use
- Double blister

13629

PQ 5 units

 Product: 52 x 25.5 x 10.5
 Package: 58.5 x 25.5 x 10.5

EAN 40008100136292

13623**pure fork**

- Made of stainless steel
- Comfortable to use thanks to ergonomically optimised design
- Rubberised handle for safe use
- Attractive double blister



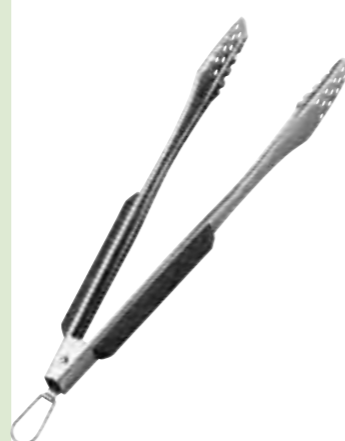
PQ 6 units

 Product: 42 x 5 x 3.5
 Package: 49.5 x 11 x 6

EAN 4000810136230

13624**pure barbecue tongs**

- Made of stainless steel
- With locking system
- Easy handling of the food thanks to specially adapted tips
- Ergonomically optimised design
- Rubberised handle
- Double blister



PQ 6 units

 Product: 46.5 x 5 x 4.5
 Package: 54 x 12 x 5

EAN 40008100136247

13631**pure knife**

- Made of stainless steel
- Comfortable to use thanks to ergonomically optimised design
- Rubberised handle for safe use
- Double blister



PQ 6 units

 Product: 37.5 x 3 x 2
 Package: 42.5 x 11 x 2.5

EAN 4000810136315

13632**pure skewers**

- Made of stainless steel
- With movable extractor
- Triangular blade shape prevents the food from slipping
- Ergonomically optimised design
- Rubberised handle
- Double blister



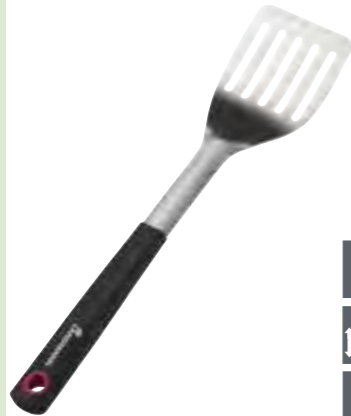
PQ 5 units

 Product: 40.5 x 2.5 x 3
 Package: 48 x 12 x 3

EAN 40008100136322

13210**quality turner**

- Made of stainless steel
- Rubberised handle for safe use
- Double blister

**PQ**

6 units

Product: 42 x 9 x 3
Package: 49 x 14 x 5.5**EAN**

4000810132102

13211**quality fork**

- Made of stainless steel
- Rubberised handle for safe use
- Double blister

**PQ**

6 units

Product: 40.5 x 3 x 2
Package: 48 x 12 x 3**EAN**

4000810132119

quality barbecue tongs

- Made of stainless steel
- Rubberised handle for safe use
- Double blister

13212**PQ**

6 units

Product: 39.5 x 14.5 x 3
Package: 49 x 12 x 3.5**EAN**

40008100132126

quality basting brush

- Made of stainless steel
- With silicon bristles
- Rubberised handle for safe use
- Double blister

13213**PQ**

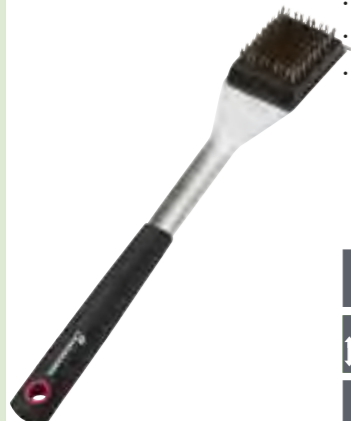
6 units

Product: 39.5 x 5 x 2
Package: 49 x 11 x 2.5**EAN**

4000810132133

13214**pure brush**

- Made of stainless steel
- With brass bristles
- With stainless-steel scraper
- Rubberised handle for safe use
- Double blister

**PQ**

6 units

Product: 42.5 x 6 x 5
Package: 49 x 12 x 7**EAN**

40008100132140

13216**quality skewers**

- Made of stainless steel
- With movable extractor
- Triangular blade shape prevents the food from slipping
- Rubberised handle for safe use
- Double blister

**PQ**

6 units

Product: 40.5 x 3 x 2
Package: 48 x 12 x 2.5**EAN**

4000810132164

13217**quality vegetable basket**

- Made of stainless steel
- Removable handle enables barbecuing when the lid is closed
- Rubberised handle for safe use
- Double blister

**PQ**

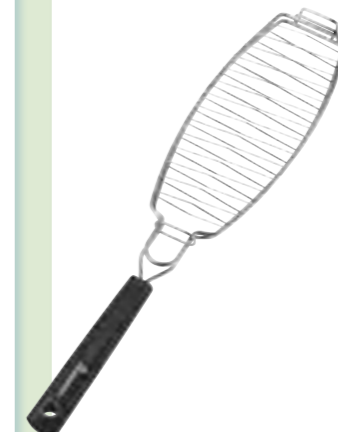
6 units

Product: 52 x 26 x 10.5
Package: 58.5 x 26 x 10.5**EAN**

4000810132171

13218**quality fish holder**

- Made of stainless steel
- Rubberised handle for safe use
- Double blister

**PQ**

6 units

Product: 56.5 x 12 x 3
Package: 62.5 x 16 x 3**EAN**

4000810132188



**13376****24-piece tool set in case**

- Full stainless steel, aluminium case
- Comprises: Fork, turner, tongs, basting brush, knife, barbecue cleaning brush, kebab skewers (4), salt and pepper shakers and cutlery for 6 persons
- Outer carton with label

PQ 5 units

 Product: 47 x 4 x 10 (turner)
 Package: 52 x 9 x 31
EAN 4000810133765**13373****18-piece tool set in case**

- Stainless steel, with solid wooden handles
- Comprises: Fork, turner, tongs, basting brush, knife, barbecue cleaning brush, kebab skewers (4) and cob holders (8)
- Plastic case and sleeve

PQ 5 units

 Product: 40.5 x 9.5 x 2.5 (turner)
 Package: 53 x 6.5 x 25
EAN 4000810133734**13344****3-piece tool set in case**

- Full stainless steel
- Comprises: Turner, tongs and barbecue brush with brass bristles
- Aluminium case with sleeve

PQ 5 units

 Product: 35 x 7.5 x 1.5 (turner)
 Package: 37 x 11 x 8
EAN 4000810133444**3-piece tool set**

- Stainless steel, sturdy design
- Comprises: fork, turner and tongs
- Blister

13360**PQ** 10 units

 Product: 41 x 9 x 2 (turner)
 Package: 58 x 21 x 5
EAN 4000810133604**3-piece tool set**

- Made of stainless steel
- Comprises: fork, turner and tongs
- Blister

0204**PQ** 24 units

 Product: 37.5 x 7 x 2 (turner)
 Package: 51.5 x 20 x 5.5
EAN 4000810002047**0110****3-piece tool set**

- Chrome-plated, with wooden handles
- Comprises: fork, turner and tongs
- Polybag with header card

**PQ** 25 units

 Product: 50 x 7 x 2 (turner)
 Package: 59.5 x 11 x 5
EAN 4000810001101**0101****3-piece tool set**

- Chrome-plated
- Comprises: fork, turner and tongs
- Polybag with header card

**PQ** 25 units

 Product: 38 x 7 x 1.5 (turner)
 Package: 48 x 10 x 5
EAN 4000810001019**Barbecue tongs**

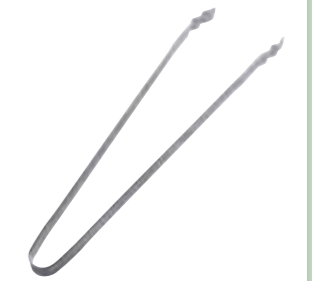
- Made of stainless steel
- With rubberised handles and silicon tips
- Blister

13347**PQ** 25 units

 Product: 34 x 4 x 3
 Package: 43.5 x 10 x 4
EAN 4000810133475**Barbecue tongs**

- Full stainless steel
- Attached to printed card

0139**PQ** 12 units

 Product: 38 x 3.5 x 1.5
 Package: 46.5 x 7.5 x 2.5
EAN 4000810001392**0280****Barbecue tongs**

- Chrome-plated, scissor design
- With heat-insulated handle
- Tag

**PQ** 25 units

Product: 38 x 10 x 5

EAN 4000810002801**0154FSC****Barbecue tongs**

- Solid wood
- FSC-certified
- Length: 44 cm
- Without packaging

**PQ** 25 units

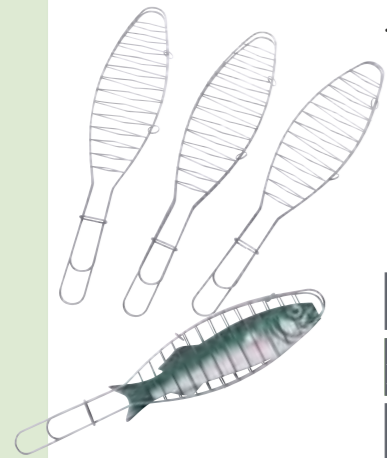
Product: 44 x 2 x 2

EAN 4000810001545

0177

Set of 4 fish holders

- Chrome-plated
- 4 units per package
- Polybag with header card



PQ 25 units
Product: 42 x 9 x 0.5
Package: 52 x 11.5 x 4
EAN 4000810001774

0147

Fish holder

- Chrome-plated
- Polybag with header card



PQ 25 units
Product: 42 x 9 x 0.5
Package: 51 x 11.5 x 1.5
EAN 4000810001477

0252

Barbecue tray

- Enamelled
- Dish-washer safe
- Colour carton with window and Euro hole



PQ 20 units
Product: 32.5 x 24.5 x 2
Package: 35.5 x 25 x 3
EAN 4000810002528

0250

Aluminium cooking pans

- With ventilation slots
- 5 pans per package
- Polybag with printed inlay



PQ 30 units
Product: 35 x 23 x 2
Package: 34 x 24 x 4
EAN 4000810002504

Cob holder

- Plastic
- 8 units per package
- Blister

13388

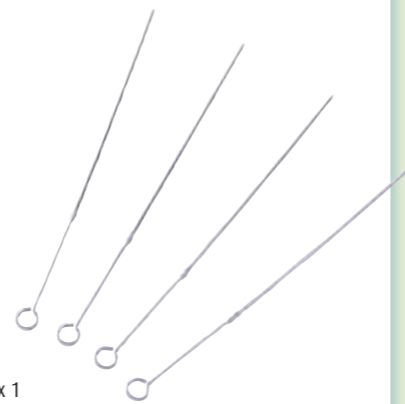


PQ 48 units
Product: 8.5 x 1 x 2
Package: 18 x 17 x 2
EAN 4000810133888

Kebab skewers

- Chrome-plated
- 4 units per package
- Blister

0105



PQ 25 units
Product: 38 x 2
Package: 50 x 7.5 x 1
EAN 4000810001057

Aluminium cooking pans

- 10 pans per package
- With ventilation slots
- Polybag with printed inlay

75644



PQ 15 units
Product: 35 x 23
Package: 35 x 23 x 4.5
EAN 40008133756449

Aluminium cooking pans

- With ventilation slots
- 3 pans per package
- Polybag with printed inlay

0248



PQ 30 units
Product: Ø 34 x 2
Package: 34 x 34 x 3
EAN 4000810002481

0245

Kebab skewers

- Bamboo skewers
- 50 units per package
- Polybag with header card



PQ 25 units
Product: 30 cm length
Package: 38 x 8.5 x 2
EAN 4000810002450

0246

Aluminium cooking pans

- 4 pans per package
- No flare-ups due to fat dripping onto the embers
- With ventilation slots
- Polybag with printed inlay



PQ 40 units
Product: 32.5 x 19 x 2
Package: 35.5 x 24 x 3
EAN 4000810002467

0312

Aluminium drip pans

- Suitable for kettle barbecues etc.
- 10 pans per package
- Polybag with printed inlay



PQ 15 units
Product: 31.5 x 4.5 x 21.5
Package: 31.5 x 8.5 x 22
EAN 4000810003129

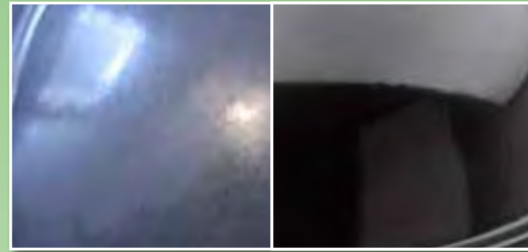


Cleaning & care:

Intensive cleaning



Stainless steel, before and after cleaning

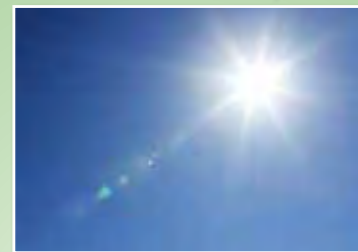


Coated surfaces, before and after cleaning

Optimum long-term protection



Water and dirt-repellent



UV protection



Protection against surface rust

Eco-friendly



- Water-soluble
- 100% biodegradable
- Solvent-free
- Does not cause skin irritation
- Non-flammable



Cooking grills: chrome-plated, enameled, stainless steel

Stainless steel

Enamelled

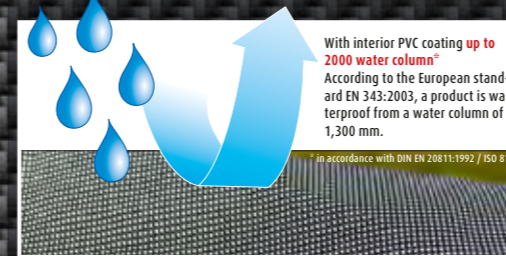
Painted

Powder-coated



Weather protection premium line

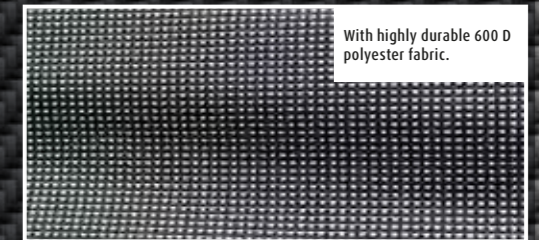
Waterproof



With interior PVC coating up to **2000 water column***
According to the European standard EN 343:2003, a product is waterproof from a water column of 1,300 mm.

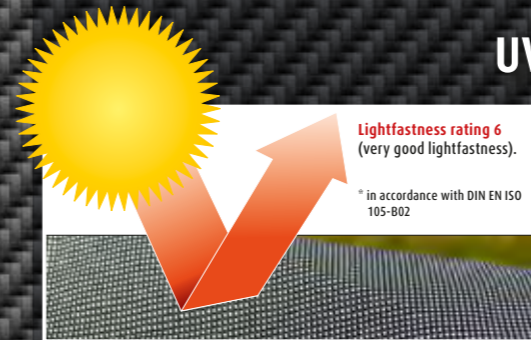
* in accordance with DIN EN 208 11:1992 / ISO 811

Tear-proof



With highly durable 600 D polyester fabric.

UV-resistant

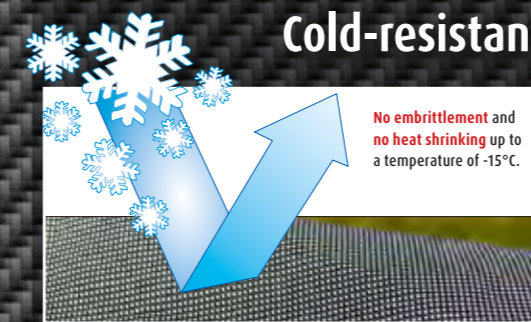


Lightfastness rating **6** (very good lightfastness).

* in accordance with DIN EN ISO 105-B02

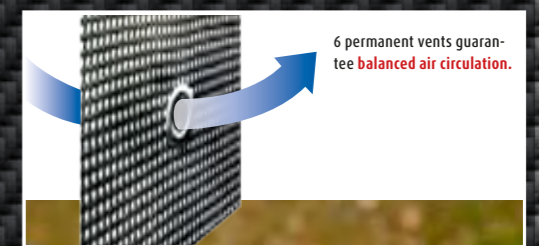
Level	Lightfastness	Fading
Level 1	Very low	
Level 2	Low	
Level 3	Moderate	
Level 4	Quite good	
Level 5	Good	
Level 6	Very good	

Cold-resistant



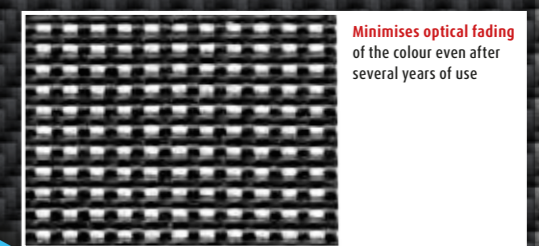
No embrittlement and no heat shrinking up to a temperature of -15°C.

Breathable



6 permanent vents guarantee **balanced air circulation**.

Mottled fabric



Minimises optical fading of the colour even after several years of use



NEW

15704 **premium cover**

- Suitable for barbecues with setup dimensions of Ø 70 x 90 cm
- 600D polyester, tear-proof
- Water-proof (water column 2000 mm), UV-resistant with lightfastness rating 6
- Cold-resistance up to -15°C, prevents embrittlement
- Breathable, with 6 vents
- Colour carton

PQ 6 EAN 4000810157044

 15700
quality cover R

- Suitable for barbecues with setup dimensions of 70 x 80 (Ø/H) cm
- PVC
- Optimum protection against rain, sunshine and cold
- With hook-and-loop fastener at the bottom
- Polybag with printed card

PQ 10  Package: 39 x 32 x 2 EAN 4000810157006

NEW

NEW


15705 **premium cover M**

- Suitable for barbecues with setup dimensions of 80 x 120 x 60 cm
- 600D polyester, tear-proof
- Water-proof (water column 2000 mm), UV-resistant with lightfastness rating 6
- Cold-resistance up to -15°C, prevents embrittlement
- Breathable, with 6 vents
- Colour carton

PQ 6 EAN 4000810157051

 15701
quality cover M

- Suitable for barbecues with setup dimensions of 85 x 100 x 50 cm
- PVC
- Optimum protection against rain, sunshine and cold
- With hook-and-loop fastener at the bottom
- Polybag with printed card

PQ 10  Package: 39 x 32 x 2 EAN 4000810157013

NEW

NEW

15706 **premium cover L**

- Suitable for barbecues with setup dimensions of 100 x 120 x 60 cm
- 600D polyester, tear-proof
- Water-proof (water column 2000 mm), UV-resistant with lightfastness rating 6
- Cold-resistance up to -15°C, prevents embrittlement
- Breathable, with 6 vents
- Colour carton

PQ 6 EAN 4000810157068

 0276
quality cover L

- Suitable for barbecues with setup dimensions of 130 x 110 x 60 cm
- PVC
- Optimum protection against rain, sunshine and cold
- With hook-and-loop fastener at the bottom
- Polybag with printed card

PQ 10  Package: 39 x 32 x 4 EAN 4000810002764

NEW

15707 **premium cover XL**

- Suitable for barbecues with setup dimensions of 145 x 120 x 60 cm
- 600D polyester, tear-proof
- Water-proof (water column 2000 mm), UV-resistant with lightfastness rating 6
- Cold-resistance up to -15°C, prevents embrittlement
- Breathable, with 6 vents
- Colour carton

PQ 6 EAN 4000810157075





**POWER
CLEANER**

15800 

power cleaner for barbecues (stainless steel)

- Cleaning agent for stainless-steel surfaces
- Removes stubborn dirt
- Rust remover included
- Water-soluble, solvent-free
- Biodegradable
- Corrosion-resistant
- Non-flammable
- Plastic bottle, 0.5 l

PQ 12



Product: 23 x 8.5 x 4

EAN

4000810158003

 **15803**

power protector for barbecues (stainless steel)

- Care agent for stainless-steel surfaces
- Optimum long-term protection of stainless steel
- Water-repellent, dirt-repellent, UV protection
- Protection against surface rust
- Water-soluble, solvent-free, biodegradable
- Corrosion-resistant
- Non-flammable, does not cause skin irritation
- Plastic bottle, 0.5 l

PQ 12



Product: 23 x 8.5 x 4

EAN

4000810158034



**POWER
PROTECTOR**



**POWER
CLEANER**

15801 

power cleaner for barbecues

- Cleaning agent for enamelled, painted and powder-coated surfaces
- Removes stubborn dirt
- Water-soluble
- Solvent-free
- Biodegradable
- Corrosion-resistant
- Non-flammable
- Plastic bottle, 0.5 l

PQ 12



Product: 26.5 x 8.5 x 4

EAN

4000810158010

 **15802**

power protector barbecue care agent

- Care agent for enamelled, painted and powder-coated surfaces
- Optimum long-term protection of coated surfaces
- Water-repellent, dirt-repellent, UV protection
- Water-soluble, solvent-free, biodegradable
- Corrosion-resistant, non-flammable
- Does not cause skin irritation
- Plastic bottle, 0.5 l

PQ 12



Product: 23 x 8.5 x 4

EAN

4000810158027



**POWER
PROTECTOR**



13025 

power cleaner barbecue cleaning cloths

- 40 units per box
- Size: 17 x 25 cm
- Intensive cleaning power with immediate effect
- For eliminating contamination like barbecue residue, crusting, burnt coating, hard soot, grease and oil
- Cleaning power on both sides
- Tear-proof, with high dirt absorption capacity
- Anti-bacterial, with skin-friendly vitamin E and Aloe vera
- Plastic box

PQ 8



Product: 17 x 25

EAN

4000810130252

 **0145**

Barbecue cleaning spray

- For barbecues, ovens and fire pit panels
- Solvent-free
- Biodegradable
- 0.5 l per bottle
- Plastic spray bottle

PQ 14



Product: 26 x 9 x 4

EAN

4000810001453



13455**selection brush**

- selection brush
- Power grip: The special product design allows you to use your other hand for vigorous cleaning
- Hand eingesetzt werden
- Grill scraper for thorough cleaning



VE 10 units

Product: 37 x 8 x 8
Package: 42 x 10 x 9

EAN 4000810134557

13620**pure brush**

- Made of stainless steel
- With stainless-steel bristles
- With stainless-steel scraper
- Comfortable to use thanks to ergonomically optimised design
- Rubberised handle for safe use
- Double blister



VE 6 units

Product: 42 x 7 x 9
Package: 50 x 14 x 8.5

EAN 4000810136209

0207**Brush**

- Plastic handle
- With brass bristles, plastic sponge, and stainless-steel scraper
- Colour card



VE 48 units

Product: 16.5 x 12.5 x 8.5

EAN 4000810002078

02076**Professional brush**

- Plastic handle
- With brass bristles, plastic sponge, and stainless-steel scraper
- Quality design
- Colour card



VE 48 units

Product: 17 x 12 x 7

EAN 4000810020768

pure brush

- With three sides
- With soft stainless-steel bristles
- Rubberised handle for safe use
- Ideal also for cast-iron grills and hotplates
- Double blister

13630

VE 6 units

Product: 41 x 3 x 18
Package: 47 x 4 x 21.5

EAN 4000810136308

pure brush

- Made of stainless steel
- With brass bristles
- With stainless-steel scraper
- Rubberised handle for safe use
- Double blister

13214

VE 6 units

Product: 42.5 x 6 x 5
Package: 49 x 12 x 6

EAN 40008100132140

Barbecue mitten

- Material: Cotton
- Extra long for protection against heat and grease
- Polybag with header card

13361

VE 25 units

Product: 36 x 18
Package: 44 x 22 x 3

EAN 4000810133611

Barbecue apron

- Material: 65% polyester, 35% cotton
- Large apron with pocket
- Polybag with header card

13701

VE 25 units

Product: 105 x 70
Package: 32.5 x 18 x 3

EAN 4000810137015

10900**Brush**

- Plastic handle, with brass bristles, plastic sponge and stainless-steel scraper
- Polybag with header card



VE 24 units

Product: 38 x 5.5 x 8
Package: 53 x 15 x 8.5

EAN 4001831109005

**13699****selection pair of barbecue mittens**

- One left and one right mitten made of breathable leather
- Extra-long cuff for spark protection, highly heat-resistant
- Soft lining
- Colour header card with Euro hole



VE 6 units

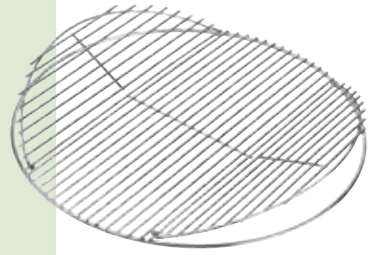
Product: 17 x 36.5 x 2
Package: 17 x 41 x 4

EAN 4000810136995

14079/78

Round grill

- Chrome-plated, folds up
- Cooking area 55 / 45 cm
- For easy topping up with charcoal and briquets
- Also suitable for items 31346, 31342 and 31341 black pearl (without Opti-Heat function)

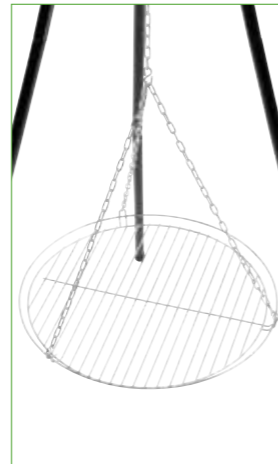


PQ 6 units
Product: Ø 55 / Ø 45
EAN 4000810140794
 4000810140787

0161

Spare grill for tripod barbecues

- Chrome-plated cooking grill with safety edge
- Chain included
- Suitable e.g. for item no. 0543 and 31061



PQ 10 units
Product: Ø 50 cm
Package: 51.5 x 2 x 51.5
EAN 4000810001613

13050

Universal rotisserie set

- Splash-proof stainless-steel motor housing
- Suitable for the avalon, miton and triton model series
- Suitable for Grillchef item no. 12739
- Colour carton



PQ 10 units
Product: 88.5 cm length
Package: 90 x 15 x 10
EAN 4000810130504

41302

Skewer

- Chrome-plated
- Suitable for all barbecues with up to 60 cm cooking area
- Suitable for battery-powered rotisserie motor (item no. 0100, 0272)
- Attached to printed card

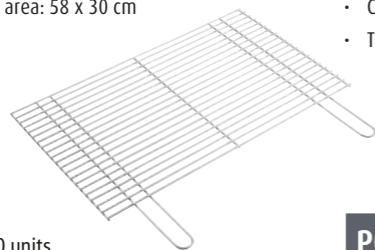


PQ 10 units
Product: 65.5 x 4.5 x 4
Package: 67 x 11 x 4.5
EAN 4008131413027

0187

Cooking grill

- Chrome-plated
- Cooking area: 58 x 30 cm
- Tag

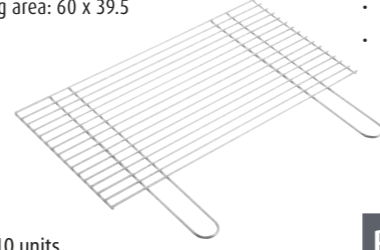


PQ 10 units
Product: 58 x 44.5
EAN 4000810001873

0188

Cooking grill

- Chrome-plated
- Cooking area: 60 x 39.5
- Tag

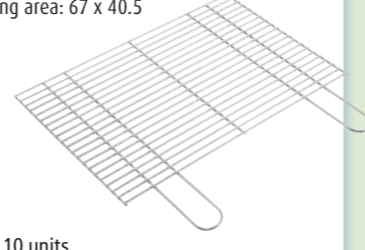


PQ 10 units
Product: 60 x 55
EAN 4000810001880

0189

Cooking grill

- Chrome-plated
- Cooking area: 67 x 40.5
- Tag



PQ 10 units
Product: 67 x 55
EAN 4000810001897

Universal rotisserie set

- Electrically powered
- For food up to 3 kg
- Suitable for gas wagon barbecues 12739, 12735 and 12737
- Colour carton

13055



PQ 10 units
Product: 8.5 x 79.5 x 8.5
Package: 10 x 71 x 13.5
EAN 4000810130559

Electric barbecue motor

- For spit set
- Mains supply (220 V - 240 V)
- Output: 4 W
- Suitable for 6.5 mm square skewers
- Colour carton

0272



PQ 10 units
Product: 12 x 8 x 8
Package: 14.5 x 9.5 x 8
EAN 4000810002726

**triton 3.0 + 4.1 hotplate
triton 2.0 hotplate**

13190/91

- Made of enamelled cast iron
- **Item no. 13190** (with serrated back)
Suitable for model: 12930/31/32, 12960/61/62
- **Item no. 13191** suitable for model: 12901/02/03

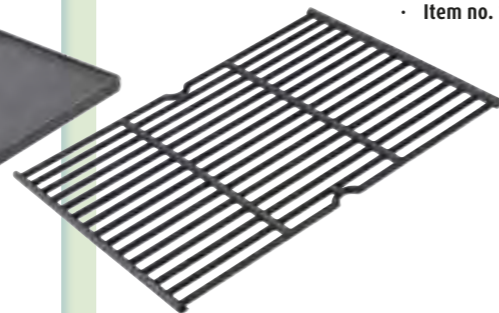


PQ 5 units
Product: 43.5 x 32 x 1.5
 43.5 x 23.5 x 1.5
Package: 46 x 33.5 x 3
 46 x 25 x 3
EAN 4000810131907
 4000810131914

13193/94

**triton 3.0 + 4.1 cooking grill
triton 2.0 cooking grill**

- Made of enamelled cast iron
- **Item no. 13193** suitable for model: 12930/31/32 and 12960/61/62
- **Item no. 13194** suitable for model: 12901/02/03



PQ 5 units
Product: 44 x 32 x 1.5
 44 x 24 x 1.5
Package: 46 x 33.5 x 3
 46 x 25 x 3
EAN 4000810131938
 4000810131945

0100

Battery-powered rotisserie motor

- Suitable for 6.5 mm square skewers
- Colour carton



PQ 10 units
Product: 14 x 5.5 x 5.5
Package: 14.5 x 5.5 x 5.5
EAN 4000810001002

0162

Enamelled pot and lid

- Accessories for tripod barbecues
- Stainless-steel scoop
- Pot volume: 14 l
- Colour carton



PQ 1 units
Product: 37 x 28 x 35.5
Package: 36 x 36 x 23.5
EAN 4000810001620

1049

Replacement burner

- Made of stainless steel
- Flexible connection pipes
- Blister



PQ 10 units
Product: 39 x 10 x 2
Package: 45 x 18 x 6.5
EAN 400081010493

1031

Pressure regulator

- 50 mbar
- Gas flow: 1.5 kg/h
- Colour carton



PQ 50 units
Product: 10 x 7.5 x 4
Package: 14 x 7 x 3.5
EAN 4000810010318

Low-pressure hose

- 50 mbar
- Suitable for all EN 498-compliant gas barbecues
- Colour carton

1032



PQ 50 units
Product: Ø 1.3 x 80
Package: 17 x 14 x 4.5
EAN 4000810010325

Safety valve

- 50 mbar
- Gas flow: 1.5 kg/h
- Mandatory in the catering industry
- Colour carton

7805



PQ 12 units
Product: 12 x 9 x 7.5
Package: 12 x 9 x 9
EAN 4000810078059

7801

Hose failure safety device

- Suitable for all gas barbecues
- Additional protection; prevents gas leakage in the event of hose damage
- Mandatory in the catering industry



PQ 10 units
Product: Ø 1.8 x 6.2
EAN 4000810078011

0273

Lava rocks

- Replacement lava rocks for gas barbecues
- Even heat distribution
- Colour carton



PQ 1 units
Package: 23 x 21.5 x 12.5
EAN 4000810002733



0226

Barbecue fan

- Hand-powered plastic barbecue fan
- Colour carton with Euro hole



PQ 12 units
 Product: 26 x 8 x 5
 Package: 30 x 8.5 x 5
EAN 4000810002269

0121

Bellows

- Wooden side elements, with plastic bellows and decorative nails
- Polybag with header card



PQ 12 units
 Product: 41.5 x 17.5
 Package: 49 x 22 x 3
EAN 4000810001217

0130

Lighting fluid

- Disaromatised kerosene oil
- 1.0 l per bottle
- Plastic safety bottle



PQ 12 units
 Package: Ø 8 x 27.5
EAN 4000810001309

0128

Lighting gel

- Pure n-paraffin lighter concentrate
- 1 l per bottle, lasts as long as 5 l lighting fluid
- Plastic safety bottle



PQ 12 units
 Package: Ø 8 x 23.5
EAN 4000810001286

Gas lighter

- Refillable gas lighter
- Blister

0223



PQ 25 units
 Product: 27.5 x 3.5 x 2
 Package: 33 x 7.5 x 2
EAN 4000810002238

Electric barbecue lighter

- Electric charcoal lighter
- Colour carton with Euro hole

0224



PQ 5 units
 Product: 48.5 x 8 x 18.5
 Package: 60 x 17.5 x 6.5
EAN 4000810002245

Lighting cubes

- Paraffin-based lighter (n-paraffin)
- 12 lighters per package
- Colour carton

0141



PQ 24 units
 Package: 10 x 17.5 x 3
EAN 4000810001415

Lighting cubes

- Paraffin-based lighter (n-paraffin)
- 24 lighters per package
- Colour carton

0144



PQ 24 units
 Package: 19.5 x 17.5 x 3
EAN 4000810001446

13510

Universal poker and coal shifter

- With broad shifting tip and hook made of powder-coated iron
- Bamboo handle
- Tag



PQ 20 units
 Product: 58 x 6.5 x 12
EAN 40008100135103

0131

Charcoal starter

- 27.5 cm charcoal starter with wooden handle
- Colour carton



PQ 6 units
 Product: Ø 17 x 27.5
 Package: 27.5 x 28 x 17
EAN 4000810001316

0140

Barbecue and fire pit lighters

- Pressed wood fibre
- 12 lighters per package
- Colour carton



PQ 24 units
 Package: 19 x 13.5 x 2.5
EAN 4000810001408

13806

Lighting cubes

- Lighter material consisting of pressed wax-soaked wood fibre
- 96 lighters per package
- Round can with resealing lid



PQ 6 units
 Package: Ø 12.5 x 24.5
EAN 4000810138067



09515 LANDMANN

Restaurant charcoal

- Optimum charcoal size for quick burning and high barbecue temperature
- Burns evenly - very little ash
- From South Africa - the home of premium charcoal
- Quality product from the KwaZulu Natal region
- 100% charcoal from well-managed forests



Product: 28.5 x 34 x 18.5
 EAN 4000810095155

LANDMANN **09520** **09522**

premium barbecue briquets - long time bbq

- Long time BBQ - pure hardwood charcoal particles guarantee extra-long barbecuing fun
- High burning temperature
- Affirmation of the premium quality by an independent testing institute
- Natural maize starch bonding agent
- From South Africa - the home of premium charcoal briquets
- 100% charcoal from well-managed forests



Product: 22.5 x 42 x 12 (3 kg)
 Product: 24 x 60 x 14.5 (7 kg)
 EAN 4000810095209 (3 kg)
 EAN 4000810095223 (7 kg)



09514 LANDMANN

premium barbecue charcoal perfect blend

- Optimum charcoal size for quick burning and high barbecue temperature
- Burns evenly - very little ash
- Affirmation of the premium quality by an independent testing institute
- From South Africa - the home of premium charcoal
- Quality product from the KwaZulu Natal region
- 100% charcoal from well-managed forests



Product: 24 x 54 x 14.5
 EAN 4000810095148

LANDMANN **09252**

Secondary placement display (1/2 CHEP format)

- Goods stocking: 80 sales units
- 4c print, with transport package

Product dimensions display: 78 x 100 x 56
 Product dimensions individual package: 24 x 31 x 8
 EAN 4000810009251

... not new, but still up to date!

grillpad

- Instant charcoal in a 1 kg bag
- **2 in 1** - charcoal soaked in lighter fluid
- **Easy to use** - no tipping the charcoal out, no dirty hands



Point of sale





43100 LANDMANN

Shop system - 12

- Comprises:
- 4 side frames
 - 2 roof elements
 - 6 connecting bars including 6 acrylic logos
 - 4 T-mounting systems
 - 4 shelves
 - 6 perforated rails for accessories
 - 30 double hooks
 - 2 outdoor banners
 - 6 indoor banners

Width: 760 cm, height: (top edge roof element) 241 cm, including top sign 270 cm, depth: 62 cm (without pallets) **EAN** 4000810431007



43101 LANDMANN

Shop system - 8

- Comprises:
- 3 side frames
 - 2 roof elements
 - 4 connecting bars including 4 acrylic logos
 - 2 T-mounting systems
 - 3 shelves
 - 4 perforated rails for accessories
 - 20 double hooks
 - 2 outdoor banners
 - 4 indoor banners

Width: 520 cm, height: (top edge roof element) 241 cm, including top sign 270 cm, depth: 62 cm (without pallets) **EAN** 4000810431014



18201 LANDMANN

Shop system - 4

- Comprises:
- 2 side frames
 - 2 roof elements
 - 2 connecting bars including 2 acrylic logos
 - 1 shelf
 - 1 perforated metal rail for accessories
 - 5 double hooks
 - 2 outdoor banners
 - 2 indoor banners

Width: 246 cm, height (top edge roof element): 241 cm, including acrylic logo: 270 cm, depth: 62 cm (without pallets)

EAN 4000810182015

18202 LANDMANN

Additional shelf

- Placement of smaller barbecues, e.g. piccolino or the compact gas barbecue

Product: 59 x 40
EAN 4000810182022



18203 LANDMANN

Additional perforated rail

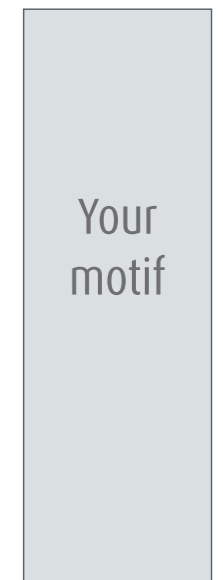
- Attractive placement of accessories or balcony barbecues
- 5 double hooks for safe placement of accessories with Euro holes

Product: 59 cm width
EAN 4000810182039



Emotionalisation

Emotionalise the sale of barbecues with our mood banners and select the most suitable banner for your shop




Motif	piccolino	triton 2	avalon	black taurus	Your motif
Item no.	18204	18206	18208	18210	
Item	Outdoors	Outdoors	Outdoors	Outdoors	Even small quantities possible
Item no.	18205	18207	18209	18211	
Item	Indoors	Indoors	Indoors	Indoors	



18765 LANDMANN

Shop system compact 2

- Comprises:
- 2 side frames
- 2 small top signs
- 1 lateral frame
- 1 large top sign
- 2 shelves
- 2 perforated rails for accessories
- 2 narrow outdoor banners
- 2 broad outdoor banners

 Setup dimensions: Width: 202 cm, Height (top edge roof element): 181 cm, including top sign 221 cm, depth: 62 cm (without pallets)


EAN 4000810187652



18764 LANDMANN

Shop system compact 1

- Comprises:
- 1 side frames
- 1 small top signs
- 1 lateral frame
- 1 large top sign
- 1 shelf
- 1 perforated rail for accessories
- 1 narrow outdoor banners
- 2 broad outdoor banners

 Setup dimensions: Width: 161 cm, Height (top edge roof element): 181 cm, including top sign 221 cm, depth: 62 cm (without pallets)


EAN 4000810187645



18319 LANDMANN

Pallet construction "Arch"

- Comprises:
- 3 x 2 cardboard tubes
- 2 top signs
- 3 foot elements

 Setup dimensions: 240 x 200
Top sign: 120 x 40

EAN 4000810183197

18302

Euro pallet cover


- 4c print



0198 LANDMANN

Secondary placement island (1/1 CHEP format)

- Can be stocked individually with suspended product presentation or rack placement

 Product: 120 x 204 x 80


EAN 4000810001989



18578 LANDMANN

Metal accessory display

- Comprises:
- 1 mesh stand
- 2 T-banner holders
- 1 top sign
- 2 outdoor banners
- 2 shelves
- 20 double hooks

 Setup dimensions: Width: 64 cm, height (top edge mesh stand): 166 cm, including top sign 206 cm, depth: 60 cm


EAN 4000810185788



0190 LANDMANN

Cooking grill stand

- Can be stocked with the cooking grills 0187, 0188 and 0189
- Side placement with round cooking grills for kettle barbecues (14078 / 14079) and/or tripod barbecues (0161)

 Setup dimensions: Width: 67 cm, including side placement 82 cm, height: 156 cm, depth: 90 cm

EAN 400081001903





019911 LANDMANN

Multi-purpose display (1/2 CHEP format)

- 4 rack shelves for flexible use
- Optionally available with top sign (total height: 179 cm)
- 4c print, with transport fastening



Product: 80 x 149 x 60

EAN 4000810199112



106291 LANDMANN

Multi-purpose display (1/4 CHEP format)

- Can be stocked individually



Product: 60 x 120 x 40

EAN 40008101062911

black pearl	18443	EAN 4000810184439
black taurus 660	18381	EAN 4000810183814
avalon 12798	18363	EAN 4000810183630
avalon 12799	18426	EAN 4000810184262
triton 2.0	18442	EAN 4000810184422
triton 3.0	18545	EAN 4000810185450

Product information attached to cooking grill

- With perforation
- With two cable ties
- Size: 40 x 21 cm



Further product information is possible in coordination with the Landmann sales department

LANDMANN 41126

Barbecue care centre (1/4 CHEP format)

- Fully stocked (21 x 15800, 21 x 15801, 21 x 15802, 21 x 15803, 48 x 13025)
- With fold-out top sign
- No handling overhead in the store



Product: 60 x 157 x 40 (including CHEP, without top sign)

EAN 4000810411269

LANDMANN 18761

Cleaning cloth display (1/8 CHEP format)

- Fully stocked (48 units)
- With fold-out top sign
- No handling overhead in the store



Product: 35 x 110 x 27 (without CHEP and top sign)

EAN 4000810187614

LANDMANN 18364

Goods presenter displays (1/4 CHEP)

- Displays stocked with goods, with one appliance set up as sample
- Sales-promoting placement of small-sized and innovative products



Product: 60 x 156 x 40 (including CHEP, without top sign)

EAN 4000810183647

LANDMANN 18366



Product: 60 x 160 x 51 (including CHEP, without top sign)

EAN 4000810183661

LANDMANN 18437

JIM BEAM® smoking chips display (1/4 CHEP)

- Fully stocked (48 packages), With fold-out top sign



Product: 60 x 157 x 40 (including CHEP, without top sign)

EAN 4000810184378



Wall placement modules for accessories

**1** Rack unit**Core range**

Fast-selling items

- Broad range, covers the entire spectrum (lighting, barbecuing/preparation, cleaning/care)

Product: 125 x 225
(without rack panel)

Stocking plans are available on request.

Rack unit **2****Basic range**

Products of the core range plus items of the pure range and other accessories

Product: 250 x 225
(without rack panel)**18336****18337****Cooking grill level**

- Attachment to conventional peg board elements
- Stocking capacity: Approx. 10 cooking grills per hook
- Diversified cooking grill stocking possible

Product 18336:
125 cm width, 4 hooks

EAN 4000810183364

Product 18337:
133 cm width, 6 hooks

EAN 4000810183371

**Full range**

Products of the basic range, plus items of the selection range, etc.

3 Rack unitProduct: 375 x 225
(without rack panel)

A	Accessories	59 - 93	C	Care centre	101
	Accessory display	99, 102, 103		Ceramic barbecue	40
	Accessory set for gas roaster	21		Charcoal	92
	Additional perforated rail	97		Charcoal balcony barbecue	26
	Additional shelf	97		Charcoal barbecue	36
	American barbecue	69		Charcoal starter	59, 90
	American burger set	69		Charcoal wagon barbecue	36
	Apron	85		Chestnut oven	45
	Arch	98		Chicken holder	59
	atracto	17		Chips	68-69
	avalon	7-10		Cleaning cloth display	101
B	Balcony barbecue	26		Cleaning cloths	82
	Balcony barbecue display	97		Coal shifter	90
	Balcony gas barbecue	26		Cob holder	76
	Ball of fire	53		Collection No. 1	46-49
	Banner	97		Compact barbecue	24-27
	Barbecue accessories	59 - 80, 88 - 91		Convection plate	30
	Barbecue apron	85		Cooking grill	86
	Barbecue basting brush	70, 72		Cooking grill flyer	100
	Barbecue Bible	65		Cooking grill stand	99
	Barbecue book	65		Cover	80-81
	Barbecue briquets	93	D	dorado	36
	Barbecue care agent	83		Drip pan	77
	Barbecue care centre	101		Dutch oven	31
	Barbecue cleaning cloths	82	E	Electric barbecue lighter	90
	Barbecue cleaning spray	82-83		Emotionalisation	97
	Barbecue fan	90	F	Fan	90
	Barbecue island	99		Fire basket	49, 52-53
	Barbecue kitchen	21		Fire column	49, 54
	Barbecue knife	59		Fish holder	67, 71, 73, 76
	Barbecue lamp	63		Flame tower	54
	Barbecue lighter	60		Fork	62, 70, 72
	Barbecue lighter, lighting gel	91		Frying pan	21
	Barbecue lighters	90, 91	G	Gas barbecue	7-26
	Barbecue mitten	60, 85		Gas barbecue kitchen	21
	Barbecue pan	66, 77		Gas lighter	90
	Barbecue pans	66, 77		Gas roasters	19
	Barbecue pot	87		Gas smoker stove	34
	Barbecue roaster	67, 71, 73, 76		Gas wagon barbecues	7-17
	Barbecue salt rock	60		geos	44
	Barbecue thermometer	60		Goods presenter display	101
	Barbecue tongs	62, 70, 72, 75		Grill	86
	Barbecue tray	66, 77		grillpad	93
	Barbecue wok	58		Grillset	66
	Barbeque motor	87	H	Hamburger press	69
	Bellows	90		heron	16
	Big Landmann	40-41		Hose failure safety device	88
	black pearl	42-43		Hotplate	86
	black taurus	37		Instant charcoal	93
	Book	65	I,J	Jim Beam®	68
	Brush	62, 70, 72, 84, 85		Jim Beam® smoking chips display	101
C	Camping barbecue	27	K	Kamado barbecue	40

K	Kebab skewers	76		Replacement burner	88
	Kettle barbecue	42-43,		Restaurant charcoal	92
	Kettle barbecue book	65		Roast holder	58
	Knife	59, 71		Round barbecue	47
L	Lamp	63	S	Rubber wheels	30
	Lava rocks	88		Safety valve	88
	Lid holder	30		Salt block	60
	Light	63		Sawdust	68
	Lighter	60		Secondary placement island	99
	Lighters	91		Shelf	97
	Lighting cubes	91		Shop banner	97
	Lighting fluid	91		Shop system	96
	Lighting gel	91		Shop system compact	98
	Low-pressure hose	88		sirius	55
M	Made in Germany	46-49		Skewers	62, 67, 71, 72, 76, 87
	Marinade injector	64		Slicing table	61
	Meat and poultry shears	64		smart tech	55
	Metal accessory display	99		Smoke box	68
	Mini barbecue pans	66		Smoker	30-34
	miton	12-14		Smoker accessories	30
	Mitten	60, 85		Smoker lid holder	30
	Motor	87		Smoker pot holder	30
O	OptiHeat system	42-43		Smoker rubber wheels	30
	Oven	34, 45		Smoking chips	68-69
P	Pallet construction „Arch“	98		Smoking chips display	101
	Pans	66, 77		Smoking planks	64, 67
	Paraffin cubes	91		Spare brushes	62, 70
	Patio heaters	54-55		Spare rib and roast holder	58
	Pedestal barbecue	45		Spitroast set	87
	Pedestal barbecue	48		stars & moon	52
	Perforated rail	97	T	Steven Raichlen®	64-65
	piccolino	27		Table barbecue	27
	Pizza set	61		tennessee	30-33
	Pizza stone	61		Thermometer	61, 67
	Planks	64, 67		Tong	62, 70, 72, 75
	Plate	86		Tool set	75
	Point of sale	94-103		Tools	75
	Poker	90		Tray	66, 77
	Portable gas barbecue	24		Tripod barbecue	44-45, 48
	Pot	87		triton	14-16
	Pot holder	30	U	Turner	62, 70, 72
	Potato thermometer	67		Underframe	20
	Poultry holder	59		Underframe for gas roaster	20
	Poultry shears	64	V	Universal display	100
	power cleaner	82		Vegetable basket	66, 71, 73
	power protector	83	W	Veggie clips	67
	premium barbecue briquets	93		Wagon barbecue	35-43, 47, 49
	premium barbecue charcoal	92		Wok	58
	Pressure regulator	88		Wok barbecue	48
	Product information	100		Wood fibre	91
	PTS system	7-15		Wood planks	64, 67
R	Rain protection	80-81			



i nformation

Big Landmann: 20-year warranty on the ceramic body.



black pearl series: 10-year warranty on lid and firebowl against rust-through and burn-through.

avalon and miton series: 10-year warranty on lid, cooking grill, and hotplate against rust-through.

triton series: 10-year warranty on cooking grill and hotplate against rust-through.



5-year warranty on **stainless-steel burners** against rust-through.



Subject to technical, design or RRP changes. All output data and dimensions are approximate values. All products are subject to strict quality control and mostly comply with the following standards and directives:

DIN EN 1860-1
Charcoal barbecues

Other DIN EN standards
e.g. electric barbecues

DIN EN 498
Gas barbecues
for outdoor use

DIN EN 1860-3
Firelighters

DIN EN 1860-4
Disposable barbecues

DIN EN 14543
Patio heaters



EC 1935 / 2004
Food contact



This catalogue has been printed on Luxosatin FSC® Mix paper

The mark of responsible forestry

Cooking area in cm (Ø)



Cooking area in cm (W/H)



Gross weight in kg



Cartons per EUR-pallet



Suitable for up to x persons



Product/package dimensions in cm (width/height/depth)



Burner output in kW



Gas hose and pressure regulator included



Suitable cover



Package quantity:



Recommended retail price



EAN code



Germany	LANDMANN® GmbH & Co. Handels-KG Am Binnenfeld 3 - 5 D-27711 Osterholz-Scharmbeck, Germany Tel: **49 - 47 91 - 30 8 - 0 Fax: **49 - 47 91 - 30 8 - 35/36 E-mail: ohz@landmann.de Web site: www.landmann.de	Netherlands Belgium	Herlaar Agenturen en Handelsonderneming Tel: **31 - 6 - 54 33 27 67 Fax: **31 - 84 - 74 70 994 E-mail: bert.herlaar@gmail.com
United Kingdom	LANDMANN® Ltd. Unit 6 Blackstone Road, Stukeley Meadows Huntingdon, PE29 6EF, United Kingdom Tel: **44 - 14 80 - 42 17 20 Fax: **44 - 14 80 - 45 88 76 E-mail: enquiries@landmann.co.uk Web site: www.landmann.co.uk	Austria	H. Zulehner Handelsagentur, Mag. Hermann Zulehner Joseph-Haydn-Gasse 18 A-2353 Guntramsdorf, Austria Tel: **43 - 22 36 - 5 24 42 Fax: **43 - 22 36 - 5 24 42 Mobile: **43 - 664 - 3 33 67 98 E-mail: hermann.zulehner@team-holzundgarten.com
Sweden	LANDMANN® Skandinavia AB Storgatan 70, S-568 32 Skillingaryd, Sweden Tel: **46 - 3 70 - 69 35 80 Fax: **46 - 3 70 - 4 95 80 E-mail: landmann@landmann.se Web site: www.landmann.se	Switzerland	Rigaflex AG Dägermoos 5, CH-5015 Erlinsbach, Switzerland Tel: **41 - 62 287 33 90 Fax: **41 - 62 287 33 97 E-mail: info@rigaflex.ch
Norway	LANDMANN® Norge AS Fjordveien 3, N-1363 Høvik, Norge Tel: **47 - 23 - 16 50 10 Fax: **47 - 23 - 16 50 11 E-mail: landmann@landmann.no Web site: www.landmann.no	USA	LANDMANN® USA 7405 Graham Road, Fairburn GA 30213, USA Tel: **1-7706068903 Fax: **1-7706068112 E-mail: customerservice@landmann-usa.com Web site: www.landmann-usa.com
Denmark	LANDMANN® Danmark A/S Nykøbingsvej 82, C/O Aquaproof A/S DK-4300 Holbæk, Danmark Tel: **46 - 370 69 35 80 Fax: **46 - 370 495 80 E-mail: landmann@landmann.dk Web site: www.landmann.dk	Australia	LANDMANN Australia/NZ Unit 10, 60 Ancona Street, Carrara, 4211 Queensland Tel: **61-7-5594 2364 E-mail: enquiries@landmann-au.com
Finland	LANDMANN® Finland OY Laulukuja 4a, SF-00421 Helsinki, Finland Tel: **358 - 9 - 47 70 93 - 0 Fax: **358 - 9 - 47 70 93 50 E-mail: landmann@landmann.fi Web site: www.landmann.fi	Hong Kong	LANDMANN® Asia Pacific Limited 11F MG Tower, 133 Hoi Bun Road, Kowloon, Hong Kong, China Tel: **852 - 29 56 16 33 Fax: **852 - 29 56 06 26 E-mail: europe@landmann.com
Hungary Romania Bulgaria Slovenia Croatia Serbia Montenegro Bosnia	LANDMANN® Hungária Kft. Almáskert utca 4. H-2220 Vecsés Hungary Tel: **36 - 29 - 55 50 70 Fax: **36 - 29 - 55 50 78 E-mail: infohun@landmann.de www.landmann.hu	China	LANDMANN® Agencies Company Limited 19/F, Jianghe Building, 31 Tianshou Road, Guangzhou, China, Postal code: 510635 Tel: **86 - 20 - 38 21 74 88 Fax: **86 - 20 - 38 21 78 13
Poland	LANDMANN® Polska Sp. z o.o. ul. Kuziennicza 13b, PL-59-400 Jawor, Polska Tel: **48 - 76 - 870 24 61 Fax: **48 - 76 - 870 23 88 E-mail: landmann@landmann.pl www.landmann.pl		Landmann® Agencies Company Limited Suite 2101, Block A, New Century Plaza, 288 Zhongshan East Road, Nanjing, PRC, China Postal code: 210002 Tel: **86-25 83 15 35 31 Fax: **86-25 83 15 35 30
Czech Republic Slovakia	DOMO SERVICE spol. s r.o. Průmyslová 1387 253 01 Hostivice Tel: **42 - 0 235 - 31 17 70 E-mail: domoservice@domoservice.cz www.domoservice.cz	Macao	LANDMANN MCO Ltd. Flat V, 21 Floor, Centro Hotline, No.335-341, Alameda Dr. Carlos D'Assumpcao Macao Tel: **853 - 28 72 26 53 Fax: **853 - 28 72 26 55
Turkey	LANDMANN Istanbul Yunus Mahallesi Adil Sokak No:3 34860 Kartal, Istanbul Tel: **90 216 389 39 39 E-mail: info-tr@landmann.de	Vietnam	LANDMANN® Vietnam 2 / 5 Tan Vien St., Ward 2, Tan Binh District Ho Chi Minh City, Vietnam Tel: **84 - 8 - 547 08 92 or 5 47 08 93 or 547 08 94 Fax: **84 - 8 - 547 08 95 E-mail: hanhtran@landmann.vn
Spain	Korona Trade Consulting S.L. C/ La Jarosa II, 13 28440 Madrid Tel: +349 18 54 25 13 Mobile: +346 29 38 62 50 E-mail: miguel.gonzalez@korona.es Internet: www.korona.es	Iceland	LANDMANN Iceland ehf Smiðjuvegur 2, 200 Kópavogur, Iceland Tel: **354-554-0400 E-mail: landmann@landmann.is Web site: www.landmann.is

www.landmann.com