

2 0 0 6

*the high
performance
watercraft
specialists*



HOT PRODUCTS
HIGHER PERFORMANCE RACING

HOT PRODUCTS

HOT PRODUCTS

R A C I N G

HOT PRODUCTS



HOT PRODUCTS is proud to announce for the all new 2006 catalog, the 2006 catalog has extensive changes and improvements including: additional detailed product information, larger images and expanded Freestyle/800SXR and Four stroke sections. As we do each year, we have refined and expanded our selection of manufacturers, products and increased our inventory in order to meet the demands of personal watercraft dealers and performance shops worldwide. This years catalog is filled with virtually everything you will need for your personal watercraft business including the ever growing "Four Stroke" section. From high performance parts for racing, to the widest selection of repair parts and accessories, *HOT PRODUCTS has it all.*

With years of experience in the watercraft industry, here at *HOT PRODUCTS*, we realize that timing and parts availability are important because people depend on your business, just as you continue to rely on *HOT PRODUCTS* for prompt order processing and shipments.

HOT PRODUCTS is committed to becoming your #1 Watercraft Industry parts and information source by providing you with the best selection, in-stock inventory and customer service.

— TO CONTACT US —



ADDRESS

8949 Kenamar Drive, Building 111
San Diego, CA 92121

PHONE

1-800-762-1633 Toll Free Orders
1-858-566-4454



FAX

1-858-566-3625 (International Orders)
1-858-566-5347 (Domestic Orders)



HOURS

9:00am - 5:00pm
Pacific Standard Time, Monday - Friday



E-MAIL:

scott@hotproductsusa.com
(International Orders)

ken@hotproductsusa.com
(Domestic Orders)



ORDERS AND CUSTOMER SERVICE

Stock orders are processed and shipped within 24 hours.

Most orders placed by 2:00pm PST Monday-Friday are shipped via ground service by United Parcel Service "UPS". Upon your request we will upgrade your shipment to Next Day Air, Second Day Air, or Three Day Select, additional shipping fees will apply.

We are ready to help you. Hot Products is committed to becoming your #1 Watercraft Industry parts and information source. Please call us, we are here waiting to help.

Order minimum/COD Fees. Hot Products minimum parts order is \$50.00. Also any order under \$200.00 that is shipped COD will incur a \$8.50 COD service charge (the actual UPS COD fee.) If the order payment is made via Visa or Mastercard the \$8.50 fee does not apply.

PAYMENT METHODS

C.O.D. All orders will be shipped COD unless previously arranged.



Charge. We accept payments via Visa & Mastercard.



EXPORT SERVICES

The parent company of Hot Products, Exceed International Inc. has over 20 years of export experience and the ability to purchase from all aftermarket watercraft industry manufacturers for export. All export orders are processed and packaged for one easy and convenient shipment to expedite the shipment and save on shipping/export fees.

Cover Photograph by Jin Omura
2006 Hot Products Sponsored Rider, Lee Stone

VISIT OUR WEBSITE AND SIGN UP TO RECEIVE THE HOT PRODUCTS NEWSLETTER

www.HotProductsUSA.com



INDEX

A	Air Filters 28, 29, 31, 32, 33 Air Filter Adapters 30-31 Aluminum Handle Pole 115-119 Anchors 154 AP Seat Covers/Mats 132-135 Aquavein Intake Grates 84 Aqua Step 139 ATI Grips 128	B	Back Deflector 151 Batteries 104 Beach House Sponsons 90-91 Beach Stands 164 Bilge Fittings 112 Bilge Pumps 112 Bilge Switches 111 Black Jack Carburetors 10 Blowson 179-181 Boyesen Reeds 23 Buoys 154 Bypass Fittings 110	C	Carburetor Adapters 30-31 Carburetor Rebuild Kit 3, 9 Carburetors 2, 8 Carbon Tech Reeds 24 Carburetor Kit 10-11 CDI 96, 99 Charging Flywheel 100 Clymer Repair Manuals 167 Coils 102 Connecting Rods 48-49 Covers/Covercraft 144 Crankshaft Bearings 49 Crankshaft Oil Seal Kits 50 Crankshafts 50 Crankshaft Webs 50	D	Decals 118, 145 Drive Couplers 80 Driveshaft & Parts 79-81 Duck Bill Drain System 114	E	Enhancer 96 Epoxy Putty 177	F	Factory Pipe Parts 62-63 Factory Zero Launcher/Tote 149 Flow Control Valve 68, 110 Flush Kits 108 Flywheels 100 Four Stroke Parts 32-35, 190-196 Freestyle Parts 179-189 Fuel Filters 16-17 Fuel Line 18 Fuel Pick Up 16, 181, 183 Fuel Pumps 20	G	Gas Caps 140 Gaskets 51-60 Gator Grip 138 Gloves 148 Goggle Grip 151 Grips 128-130	H	Handle Bars 122 Handle Poles 115-119 Handle Pole Pivot Mounts 115, 119, 182 Handle Pole Springs 119 Hardline Numbers 142-143 Hardware 168-169 Heads 38-41 Hood Seals 131 Hood System/Inserts 131 Hull Insert Repair Kit 87 Hunsacker Utility Jug 162 Hydro Turf 136-137	I	Ignition Coils 102 Impellers 70-77 Intake Grates 84-86 Intake Manifolds 11-13	J	Jet Dynamics Grates 86 Jets 6, 8 Jumper Cables 105	K	K&N Air Filter Adapters 30-31 K&N Filters 28 Keihin Carburetors 8-9	L	L.A. Sleeve 42-47 Lanyards 152-153 Leg Deflectors 151 Linkages 14	M	Mats 134-138 Mikuni Carburetors 2 Mikuni Parts 3-7 Moto Tassinari 25 Motor Mounts 36-37 MSD 66, 94-97	N	Needle & Seat 6, 9 NGK Spark Plugs & Caps 106-107 Nose Bushings 115-116, 118 Nozzles 124-125 NuJet Impellers 74 Numbers 142-143	O	ODI Grips 130 Oil Extractor 163 Oil Injection Block Off 21 OPAS Block Off 93 Outerwears Pre-Filter 31	P	Pistons 42-46 Pop-off Gauges 3 Power Plenum 32, 33 Power Valves 69 Primer Kits 19 Prox Pistons 46 Pump Cone 82 Pump Housing & Wear Rings 79-80 Pump Repair Parts 78-81 Pump Wedge 83	R	Racepak 103 Reed Spacers 26 Reed Stuffers 27 Reed Valves 23-25 Repair Manuals 167 Rescue Life Sled 150 Rescue Streamer 150 Rev Limiter 96, 99 Ride Plates 87-89	S	Rotary Valves 22 Rotary Valve Shafts 22 RRP Handlepole & Parts 115 Rule Pumps 112 Sato Engineering 124, 126, 140 Seat Covers 132-133 Shaft Repair Parts 78-81 Silicon Couplers 62-63 Skat Trak Impellers 70-73 Sleeves 42-45 Solas Impeller 75-77 Solenoids 66-67 Spark Plugs 106-107 Spigot Mounts Flanges 20 Splash Guards 138 Sponsons 90-93 Sportsstuff 160-161 Starter Motors 101 Stator Coils 102 Steering Cables 125 Steering Systems 120-121 Stix Sponsons 91 Super Charger Kit 34 Switches 105, 111 Switch Holders 123	T	Tachometers 103 Tau Ceti Filters 29 TBM 82, 85, 89, 120, 125, 126 TDR Water Boxes 64 Thermostat Kit 35 Three Bond 57, 178 Throttle Brackets 15 Throttle Cables 27 Throttle Drums 15 Throttle Levers 126-127 Tie Downs 164 Timing Advance Plate Kit 96, 100 Tools 170-176 Tow Ropes 155, 157 Trailer Accessories 165-166 Trim Tabs 88 T-Shirts 145-146 Turn Plates 117, 120 24-7 (Twenty Four Seven) 182 UMI 118-123 Video Tapes 147 VP Jugs 162	W	Water Boxes 64 Water Injections 66-67, 97 Water Line 110, 170 Water Strainers 111 Water Toy & Ropes 157-161 Wet Wolf Adjust-a-Thrust 83 Wiseco 42-45 Worx Intake Grates 85 Worx Ride Plates 89 Wrist Pin Bearings 47
----------	--	----------	--	----------	--	----------	--	----------	--	----------	--	----------	---	----------	--	----------	--	----------	--	----------	---	----------	--	----------	--	----------	--	----------	---	----------	---	----------	---	----------	---	----------	--	----------	---

FUEL SYSTEMS	ENGINE/GASKETS	EXHAUST	DRIVE LINE HANDLING	ELECTRICAL	WATERLINE /BILGE	STEERING & CONTROLS	BODY	ACCESSORIES	SERVICE TOOLS /HARDWARE	CHEMICAL	FREESTYLE & 800SX	FOUR STROKE
--------------	----------------	---------	---------------------	------------	------------------	---------------------	------	-------------	-------------------------	----------	-------------------	-------------



MIKUNI CARBURETORS

HI-PERFORMANCE SUPER BN

Extended Throttle Shaft Without Choke Shaft



38MM

Part # **53-2050**
Mikuni # BN38-34-8113



44MM

Part # **53-2060S**
Mikuni # BN44-40-8067



44MM

Part # **53-2060**
Mikuni # BN44-40-8052



46MM

Part # **53-2065**
Mikuni # BN46-42-8002



**38MM FOR DUAL
FRONT CARB**

Part # **53-2074**
Mikuni # BN38-34-8075

**Rear side carb no longer available*

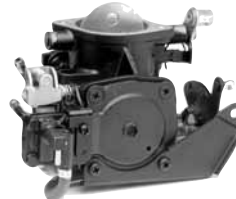
OEM REPLACEMENT SUPER BN

Regular Throttle Shaft With Choke Shaft

**** Direct replacement of OEM Carburetors at a fraction of OEM cost. ****



MAG-SIDE



PTO-SIDE



44MM - I-SERIES

Part # **53-2080**
Mikuni # BN40I-38-24

Sea Doo 720,
GTI, GTS, GS,
GSI, '97

40MM - I-SERIES

MAG-SIDE (FRONT)

Part # **53-2085** Mikuni # BN40I-38-26

PTO-SIDE (REAR)

Part # **53-2090** Mikuni # BN40I-38-27

Sea Doo 720 GTI, GTS, GS, GSI '98, 800 GTX,
GSX '96-'00, 800 SPX 97-99, 800 XP '95-'99,
951 GSX LTD '97



38MM

Part # **53-2063**
Mikuni # BN34-28-8010

Yamaha,
Wave Runner 500 88-89
Wave Jammer 500 88-89



44MM

Part # **53-2062**
Mikuni # BN44-40-43

Yamaha Superjet,
Wave Blaster,
Tigershark



44MM - I-SERIES

Part # **53-2072**
Mikuni # BN40I-38-II

Sea Doo 720
XP '95 PTO



46MM - I-SERIES

Part # **53-2095**
Mikuni # BN46I-42-B4

Sea Doo 951
GSX, GTX, XP-LTD, '98-01
XP'00, RX, LRV

**Sold as a fully assembled dual carb set.*

FUEL SYSTEMS

ENGINE/GASKETS

EXHAUST

DRIVE LINE HANDLING

ELECTRICAL

WATERLINE /BILGE

STEERING & CONTROLS

BODY

ACCESSORIES

SERVICE TOOLS /HARDWARE

CHEMICAL

FREESTYLE & 800SXR

FOUR STROKE



GENUINE CARBURETOR REBUILD KITS

Kits include all necessary gaskets, diaphragms, and hardware required to disassemble and rebuild Mikuni carburetor.

Mikuni	Diaphragm Cover	Part No.
Super BN 38mm, 44mm, 46mm I Series 38/40	Square	53-2114
*Sea Doo Pre 97, Kawasaki 750 98-02, 800 SX-R 03-05 and ALL Mikuni Performance Super BN Square Body 38mm, 44mm and 46mm carbs.		
I Series 46mm	Square	53-2115
*Sea Doo 951 98 and newer		
I Series 44mm	Square	53-2117
*Yamaha GP800 98-99, GP 800R 00-04, XL 800 01, XLT 800 02-04, GP 1200R 00-02, XL1200 Limited 99-00 and XLT 1200 01-04		
BN 38mm, 44mm	Round	53-2110
*BN carbs are "Old Style/Round Body" with round diaphragm covers		



A

POP-OFF GAUGE

For Accurate adjustment of pop off pressure levels.

Description	Part No.
A Mikuni Gauge	
30 Lbs.	53-9996
60 Lbs.	53-9996-60
100 Lbs.	53-9996-100
B Aftermarket Thumb Operated Gauge	53-9995



MIKUNI TOOL KIT

This handy little kit contains all the tools necessary to make jetting change, perform normal maintenance as well as disassemble and rebuild any Mikuni carburetor.

Description	Part No.
Mikuni Tool Kit	53-9989



B

MIKUNI POCKET TUNER

A handy pocket-size slide calculator which can be used to determine required jetting changes in Mikuni carburetors due to ambient temperature, altitude or both.

Description	Part No.
Mikuni Pocket Tuner	53-9988



MIKUNI SUPER BN SPECIFICATIONS

Hot Part #	Carb.	Low Speed Jet	High Speed Jet	Needle Valve	Arm Spring (grams)	Low Speed Adjuster	High Speed Adjuster	Choke or Primer	Color
53-2050	BN38-34-8113	65	107.5	2.0	115 gr.	1.0	1.5	Primer	Silver
53-2060	BN44-40-8052	100	125	2.3	65 gr.	1.0	1.5	Primer	Black
53-2060S	BN44-40-8067	120	140	2.5	80 gr.	1.0	1.5	Primer	Silver
53-2065	BN46-42-8002	120	150	2.5	80 gr.	1.0	1.5	Primer	Silver
53-2062	BN44-40-43	120	115	1.5	115 gr.	1.0	.75	Choke	Black
53-2063	BN34-28-8010	77.5	80	1.5	65 gr.			Choke	Black
53-2072	BN40I-38-II		147.5	1.5	80 gr.			Choke	Black
53-2074	BN38-34-8075	65	107.5	2.0	115 gr.			Primer	Black
53-2080	BN40I-38-24	70	167.5	1.5	95 gr.	1.25	closed	Choke	Black
53-2085	BN40I-38-26	67.5	140	1.5	95 gr.	1.25	closed	Choke	Black
53-2090	BN40I-38-27	67.5	142.5	1.5	95 gr.	1.25	closed	Choke	Black
53-2095	BN46I-42-B4	77.5	162.5	2.0	95 gr.	1.25	closed	Choke	Black

FUEL SYSTEMS
ENGINE/GASKETS
EXHAUST
DRIVE LINE HANDLING
ELECTRICAL
WATERLINE /BILGE
STEERING & CONTROLS
BODY
ACCESSORIES
SERVICE TOOLS /HARDWARE
CHEMICAL
FREESTYLE & 800SX
FOUR STROKE



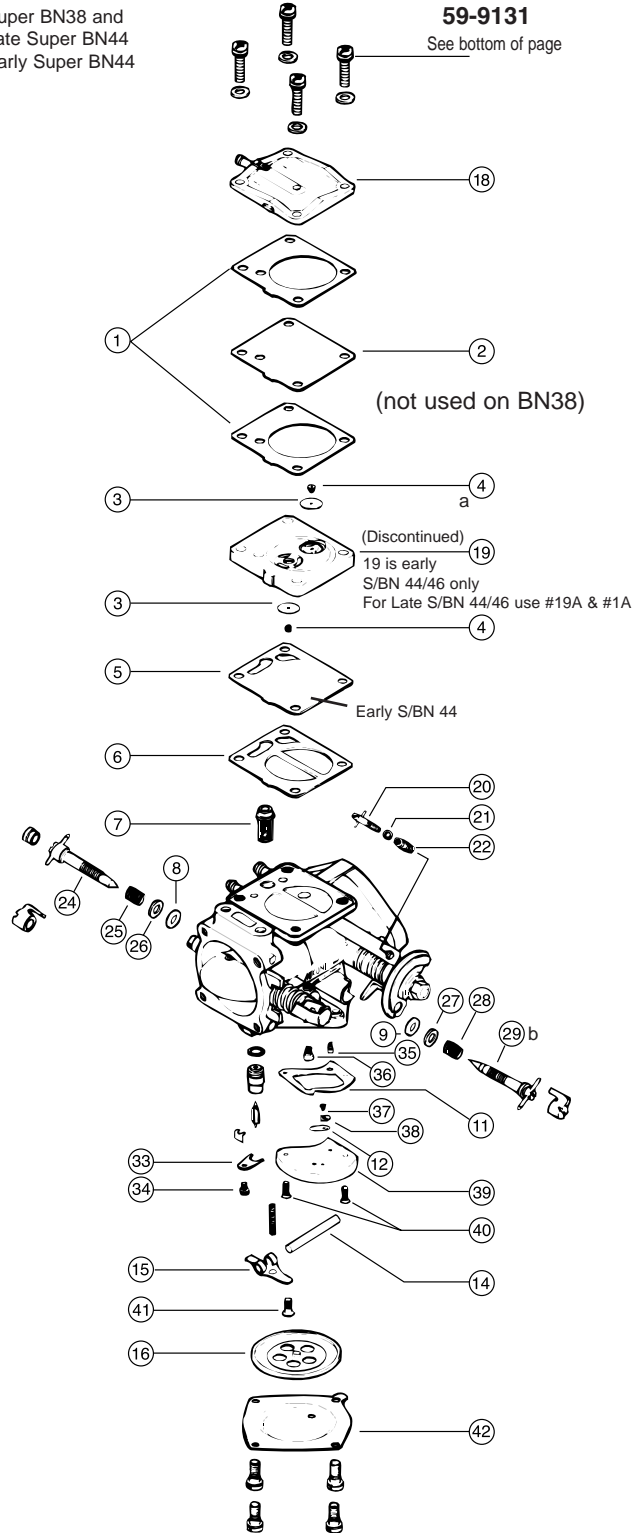
SUPER BN 44/46

Socket Bolt Kit

59-9131

See bottom of page

- * Super BN38 and Late Super BN44
- ** Early Super BN44



MIKUNI GENUINE PARTS SUPER BN38 / BN44 / BN46

Diagram No.	Description	Mikuni Part No.
1.	Gasket Pump (2)	.BN38/547
1a.	O-Ring*	.616-72001
2.	Diaphragm, Pump (Clear)	.BN34/97
3.	Check Valve (2) (Clear)	.BN34/124
4.	Grommet, Check Valve (2)	.BN34/125
5.	Diaphragm, Damper (large hole)**	.BN34/100
5a.	Diaphragm, Damper (small hole)*	.BN34/129
6.	Gasket, Damper**	.BN34/101
6a.	O-Ring*	.616-92007
7.	Filter	.BN44/146
8.	O-Ring, Hi Speed	.B30/305
9.	O-Ring, Low Speed	.MD12/16
11.	Gasket Valve Body	.BN34/123
12.	Check Valve (Clear)	.BN34/107
14.	Pin, Arm	.VM30/97
15.	Arm (Stainless)	.BN38/534
16.	Diaphragm Assembly	.BN44/145
18.	Cover Pump	.BN34/95B
19a.	Body Assembly Pump* (Must use w/O-Ring 1A)	.BN34/128
20.	Stop Screw, Idle**	.BN44/109
20a.	Stop Screw, Idle*	.BN34/82
21.	Washer (Aluminum - Same as #26)	.BN38/39
22.	Spring, Idle**	.BN38/341
22a.	Spring, Idle (Same as #25)*	.BN38/344
24.	Adjuster, Hi Speed (with Cross Bar)	.BN44/167
25.	Spring, Hi Speed (Same as #22a)	.BN38/344
26.	Washer, Hi Speed (Aluminum - Same as #21)	.BN38/39
27.	Washer, Low Speed (Aluminum)	.BN38/172
28.	Spring, Low Speed	.BN38/343
29a.	Adjuster, Low Speed (with Cross Bar) 38mm	.BN38/477
29b.	Adjuster, Low Speed (with Cross Bar) 44mm	.BN38/166
33.	Plate, N.V. Retainer	.BN34/117-GG
34.	Screw with washer	.CW2-0307-G
35.	Low Jet, 30-160 in increments of 5	.N100.606-SIZE
36.	Main Jet, 30-260 in increments of 5	.N102.221-SIZE
37.	Screw	.BV15/121-05-GG
38.	Plate, Valve	.BN34/108-GG
39.	Valve Body Assembly	.BN44/165
40.	Screw (2 pcs)	.C5-0414-G
41.	Screw	.C6-0308-G
42.	Cover (Stainless)	.BN44/147

* Super BN38 and Late Super BN44

** Early Super BN44



SUPER BN CARBURETOR TUNING MANUAL

For the watercraft tuner working with
Super BN series carburetors.

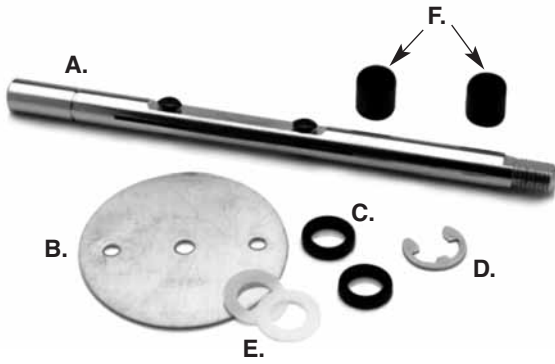
Description	Part No.
Mikuni Manual	53-9999



CARBURETOR SOCKET BOLT KIT

Replace the stock phillips bolts on
carbs with stainless steel socket head bolts.

Description	Part No.
Mikuni Super BN	59-9131



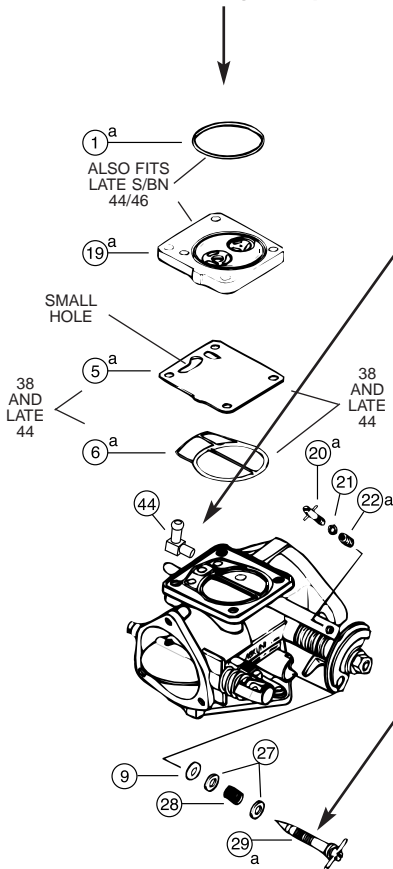
THROTTLE VALVE KIT

Description	Part No.	Mikuni Part No.
Throttle valve kit for 44mm	45	MK-BN/044 TV
Throttle valve kit for 46mm	46	MK-BN/046 TV
Throttle valve kit for 38mm	47	MK-BN/038 TV

THROTTLE SHAFTS AND VALVES

Description	Part No.	Mikuni Part No.
A. Super BN 44mm Throttle Shaft (Extended)	THS-4446	703-89004
B. Super BN 44mm #120 Throttle Valve	V44-120	BN44/06-120
B. Super BN 44mm #130 Throttle Valve	V44-130	BN44/06-130
B. Super BN 44mm #135 Throttle Valve	V44-135	BN44/06-135
B. Super BN 46mm #120 Throttle Valve	V46-120	818-46009-120
C. Super BN 38/44/46mm Throttle Shaft Seal	THSS	N167.126
D. Super BN 38/44/46mm Throttle Shaft Clip (Standard)	THSC	BN38/566
D. Super BN 38/44/46mm Throttle Shaft Clip (Heavy Duty)	THSCHD	MK-BN/005
E. Super BN 38/44/46mm Throttle Shaft Washer (Nylon)	THSW	N114.077
F. Super BN 38/44/46mm Throttle Shaft Bushing	49	BN38/569
Super BN 38/44/46mm Throttle Shaft Screw	THVS	

Super BN 38
Also used in late style Super BN 44



90° FUEL INLET FITTING (PRESS IN)

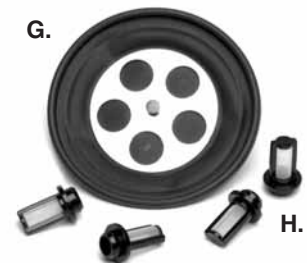
Description	Diag. #	Part No.
90° Fuel Inlet Fitting (Press In)	44	DF44-2/70



ADJUSTER WITH CROSS BAR

Description	Diag. #	Part No.
High Speed 38/44	24	BN44/167
Low Speed 38	29a	BN38/477
Low Speed 44	29b	BN38/166

(Does not fit Yam OEM 44mm carb)



DIAPHRAGM AND FILTER

Description	Diag. #	Part No.
G. Diaphragm Assembly	16.	BN44/145
H. Super BN Filter	7.	BN44/146



ULTIMATE CARB GASKETS

Thick "Green" gaskets.

Mikuni	Part No.
38mm	9230
40mm "I" Series	9235
44mm	9240
46mm	9250
48mm	9252
50mm	9257
48mm SD951 I Series	6740

FUEL SYSTEMS
ENGINE/GASKETS
EXHAUST
DRIVE LINE HANDLING
ELECTRICAL
WATERLINE /BILGE
STEERING & CONTROLS
BODY
ACCESSORIES
SERVICE TOOLS /HARDWARE
CHEMICAL
FREESTYLE & 800SXR
FOUR STROKE



PARTS STAMPING This marking on a jetting part is your quality assurance guarantee it is a genuine Mikuni component.



CARBURETOR JETS

Mikuni Low Jets
P/# (N100.606-size)

Size:	30	95
	32.5	97.5
	35	100
	37.5	102.5
	40	105
	42.5	107.5
	45	110
	47.5	112.5
	50	115
	52.5	117.5
	55	120
	57.5	122.5
	60	125
	62.5	127.5
	65	130
	67.5	132.5
	70	135
	72.5	137.5
	75	140
	77.5	142.5
	80	145
	82.5	147.5
	85	150
	87.5	155
	90	160
	92.5	

CARBURETOR JETS

Mikuni Main Jets
P/# (N102.221-size)

Size:	30	95	160
	32.5	97.5	162.5
	35	100	165
	37.5	102.5	167.5
	40	105	170
	42.5	107.5	172.5
	45	110	175
	47.5	112.5	177.5
	50	115	180
	52.5	117.5	182.5
	55	120	185
	57.5	122.5	187.5
	60	125	190
	62.5	127.5	195
	65	130	200
	67.5	132.5	205
	70	135	210
	72.5	137.5	215
	75	140	220
	77.5	142.5	230
	80	145	240
	82.5	147.5	
	85	150	
	87.5	152.5	
	90	155	
	92.5	157.5	



GENUINE MIKUNI CARB COMPARTMENT KIT

Description	Part No.
Dealer Compartment Kit*	53-2120
Compartment only	53-2122

* Dealer Compartment Kit consists of:
4 Each of Needle and Seat 1.5/2.0/2.3/2.5
4 Each of Arm Spring 65/80/95/115gm
5 Each of Low Jets 67.5/70/72.5/75/77.5
 87.5/90/92.5/95/97.5/100/102.5/105/107.5/110
5 Each of Main Jets 105/110/115/120/125
 130/135/140/145/150/155/160

OLD TYPE NEEDLES & SEATS

**ROUND DIAPHRAGM COVER
STANDARD BN
OLD TYPE, STANDARD METAL TIP**

— Screw in Type —



Description	Part No.	Mikuni No.
1.5	53-2500	VM26/26-1.5
2.0	53-2501	VM26/26-2.0
2.3	53-2502	VM26/26-2.3
2.5	53-2503	VM26/26-2.5
2.8	53-2504	VM26/26-2.8

NEW TYPE NEEDLES & SEATS

SQUARE DIAPHRAGM COVER SUPER BN (NEW TYPE)

— Push in Type —



VITON TIP

Description	Part No.	Mikuni No.
1.2	—	—
1.5	53-2600	786-35015-1.5
1.8	53-2608	786-35015-1.8
2.0	53-2601	786-35015-2.0
2.3	53-2602	786-35015-2.3
2.5	53-2603	786-35015-2.5

STANDARD METAL TIP

Description	Part No.	Mikuni No.
1.2	53-2599	786-35018-1.2
1.5	53-2598	786-35018-1.5
1.8	53-2597	786-35018-1.8
2.0	53-2596	786-35018-2.0
2.3	53-2595	786-35018-2.3
2.5	53-2594	786-35018-2.5

MIKUNI ARM SPRINGS

Description	Part No.	Mikuni No.
65gm	53-2614	730-03030
80gm	53-2613	730-03033
95gm*	53-2615	730-03034
*This spring if for Sea Doo BN 46l Carbs Only!		
95gm	53-2612	730-03027-T
115gm	53-2611	730-03027

POP-OFF PRESSURE CHART

Part. No.	53-2611	53-2612	53-2613	53-2614
Arm Springs	115 grams	95 grams	80 grams	65 grams
Needle Valve Size	1.5	55 p.s.i.	43 p.s.i.	38 p.s.i.
	2.0	32 p.s.i.	25 p.s.i.	21 p.s.i.
	2.3	22 p.s.i.	20 p.s.i.	17 p.s.i.
	2.5	19 p.s.i.	17 p.s.i.	14 p.s.i.
Color	Gold	Dull Silver	Black	Shiny Silver



MIKUNI GENUINE PARTS SUPER BN 46 "I"

Diagram No.	Description	Mikuni Part No.
4.	Grommet, Check Valve (2)	BN34/125
7.	Filter	BN44/146
8.	O-Ring, Hi Speed (2)	BN30/305
9.	O-Ring, Low Speed (2)	MD12/16
11.	Gasket Valve Body	BN34/123
12.	Check Valve (Clear)	BN34/107
14.	Pin, Arm	VM30/97
15.	Arm (Stainless)	BN38/534
16.	Diaphragm Assembly	BN44/145
61.	Gasket, Pump	BN46I/13
62.	Diaphragm, Pump (Clear)	BN46I/14
63.	O-Ring	616-73002
64.	Check Valve (2)	BN46I/11
66.	Diaphragm, Damper	BN46I/34
67.	Diaphragm, Damper (clear)	BN46I/15
68.	O-Ring	616-73003
69.	O-Ring, Needle Valve	KV/10

53-2115 BN46 I Rebuild Kit

21.	Washer, Aluminum (3)	BN38/39
25.	Spring (2)	BN38/344
27.	Washer, Aluminum (2)	BN38/172
28.	Spring, Low Speed	BN38/343
29b.	Adjuster, Low Speed	BN38/166
33.	Plate, Needle Valve Retainer	BN34/177-GG
34.	Screw with Washer	CW2-0307-G
37.	Screw	BV15/121-05-GG
38.	Plate, Valve	BN34/108-GG
39.	Valve Body Assembly	BN44/165
40.	Screw (2)	C5-0414-G
41.	Screw	C6-0308-G
42.	Cover (Stainless)	BN44/147
70.	Screw with 2 Washers (4)	BN34/120-35
73.	Stop Screw, Idle	BN38I/40
76.	Screw (4)	C2S=0514
77.	Diaphragm, Acclr. Pump	BN40I/22
79.	Body Assembly, Pump	BN46I/49



SA-300 SA-200 SA-100

ADJUSTER WITH CROSS BAR

This allows simple hi-speed adjustments, which is not possible with oem screw.

"I" series 44/46 Mikuni, Yamaha GP800/SeaDoo 951

Description	Part No.
High Speed cross bar screw	SA-100

Mikuni Carb, Yamaha XL1200LTD, XLT1200, GP1200R

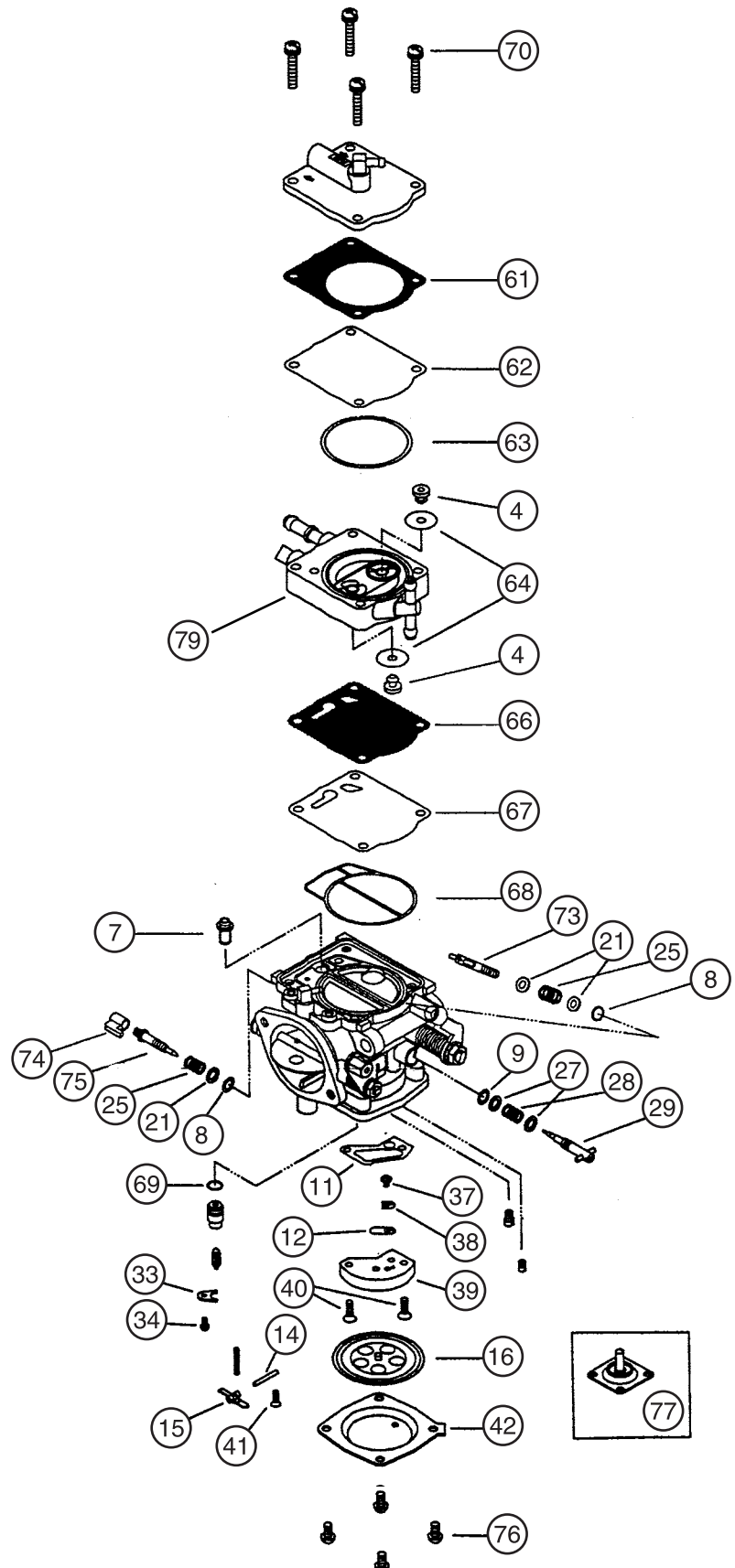
Description	Part No.
Low Speed cross bar screw	SA-200
High Speed cross bar screw	SA-300

OEM Mikuni Carb, Kawasaki 800SXR

Description	Part No.
Low Speed cross bar screw	SA-500
High Speed cross bar screw	SA-100



SUPER BN 46 "I" TYPE CARB



FUEL SYSTEMS
ENGINE/GASKETS
EXHAUST
DRIVE LINE HANDLING
ELECTRICAL
WATERLINE /BILGE
STEERING & CONTROLS
BODY
ACCESSORIES
SERVICE TOOLS /HARDWARE
CHEMICAL
FREESTYLE & 800SXR
FOUR STROKE

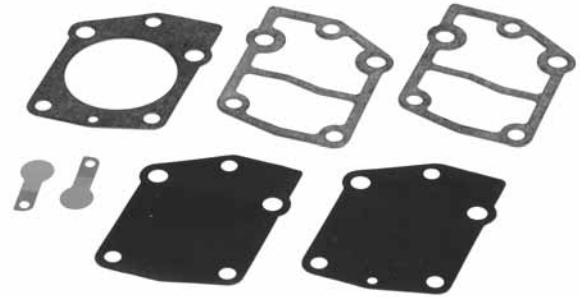
FUEL SYSTEMS
 ENGINE/ GASKETS
 EXHAUST
 DRIVE LINE HANDLING
 ELECTRICAL
 WATERLINE /BILGE
 STEERING & CONTROLS
 BODY
 ACCESSORIES
 SERVICE TOOLS /HARDWARE
 CHEMICAL
 FREESTYLE & 800SXR
 FOUR STROKE



KEIHIN OEM REPLACEMENT CARBURETOR

Polaris Hurricane 700
1996-97
39 mm

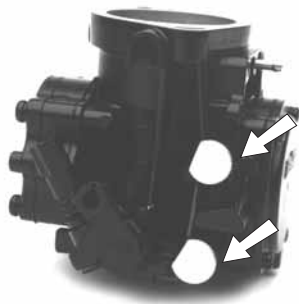
Description	Part No.
OEM Replacement	53-2030



KEIHIN FUEL PUMP REBUILD KIT

Includes all parts necessary to rebuild the Keihin fuel pump. Fits Kawasaki 650SX 1986-91, 650X2 1989-91.

Description	Part No.
Fuel Pump Rebuild Kit	53-2105



KEIHIN CARB MIXTURE ADJUSTMENT KNOBS

Billet aluminum, knurled outer, anodized knobs with index reference mark fit on the existing adjustment screws of Keihin 38/40mm carbs to make mixture adjustment easy.

Description	Part No.
Carburetor Adjustment Knobs	53-9993
Fits 38/40mm OEM type only (does not fit 42mm)	



PUMP GASKET FOR CDKII 40MM

Description	Part No.
Pump Gasket	1202-850-2001



CARB SCREW ADJUSTING TOOL

A special 90-degree screwdriver, designed to adjust carburetors of triple-cylinder watercraft.

Description	Part No.
Carb Screw Adjusting Tool	53-9994

CARBURETOR JETS

Keihin Low Jets		Keihin Main Jets	Keihin Main Jets	
P/# (N424-35-size)		P/# (N424-27-size)	P/# (N424-36-size)	
40	88	150	100	155
42	90	155	102	158
45	92	160	105	160
48	95	165	108	162
50	98	170	110	165
52	100	175	112	168
55	102	180	115	170
58	105	185	118	172
60	108	190	120	175
62	110	195	122	178
65	112	200	125	180
68	115	(for CDCV)	128	182
70	118		130	185
72	120		132	190
75			135	195
78			138	200
80			140	
82			142	
85			145	
			148	
			150	
			152	

When ordering specify type and size. Part number is not necessary



ULTIMATE CARB GASKETS

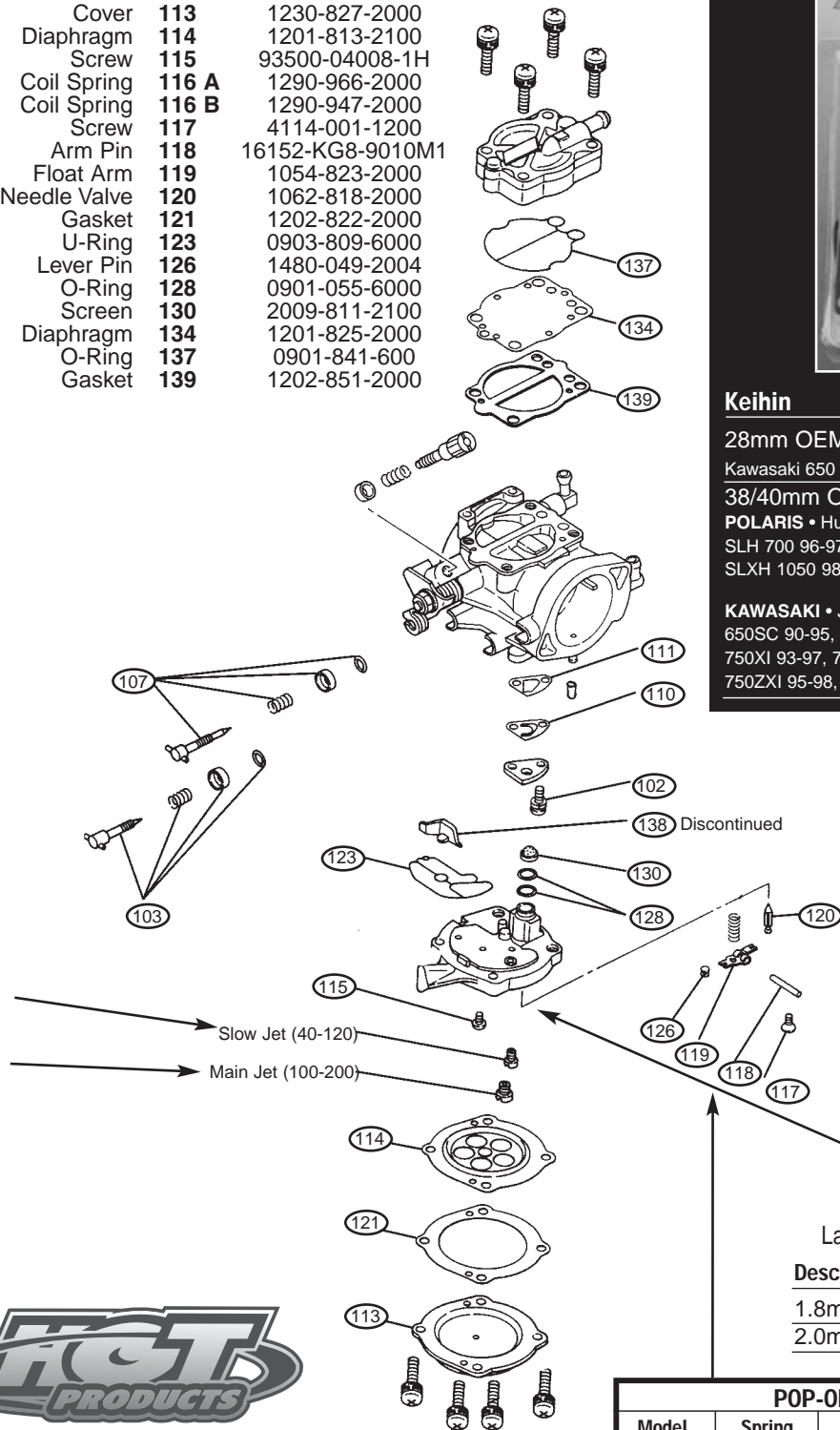
Thick "Green" gaskets.

Keihin	Part No.
38mm	9200
40mm	9205
42mm	9220

**GENUINE KEIHIN
CARBURETOR PARTS**



Description	Diagram	Keihin Part No.
Screw	102	N114-03060
Adjust Screw (Main)	103	Z014-0660
Adjust Screw (Slow)	107	Z014-0670
Check Valve	110	1242-809-2000
Gasket	111	1202-823-2000
Cover	113	1230-827-2000
Diaphragm	114	1201-813-2100
Screw	115	93500-04008-1H
Coil Spring	116 A	1290-966-2000
Coil Spring	116 B	1290-947-2000
Screw	117	4114-001-1200
Arm Pin	118	16152-KG8-9010M1
Float Arm	119	1054-823-2000
Needle Valve	120	1062-818-2000
Gasket	121	1202-822-2000
U-Ring	123	0903-809-6000
Lever Pin	126	1480-049-2004
O-Ring	128	0901-055-6000
Screen	130	2009-811-2100
Diaphragm	134	1201-825-2000
O-Ring	137	0901-841-600
Gasket	139	1202-851-2000



KEIHIN COIL SPRINGS

Description	Part No.
42mm 40 grm	1290-966-2000 116A
42mm 70 grm	1290-947-2000 116B
40mm 40 grm	1290-992-2000 116C
40mm 70 grm	1290-961-2000 116D

**KEIHIN GENUINE
CARBURETOR REBUILD KITS**

Kits include all necessary gaskets, diaphragms, and hardware required to disassemble and rebuild Keihin carburetor.



Keihin Part No. **53-2100**
28mm OEM Type

Kawasaki 650 SX 1986-91 & 650 X-2 1986-91

38/40mm OEM Type & 42mm CDKII Part No. **53-2103**

POLARIS • Hurricane 700 96-97, SL/SLT 700 96-97, SLH 700 96-97, SL900 96-97, SL/SLTX 1050 96-00, SLXH 1050 98-99, Genesis 99-00, 1200Pro 00, Virage/TX 00

KAWASAKI • JS440 91-92, JS550SX 91-95, 650TS 89-96, 650SC 90-95, 750SX 92-95, 750SXI 95, 750SS 92-98, 750XI 93-97, 750XIR 94, 750ST 94-95, 750STS 95-97, 750ZXI 95-98, 900ZXI 95-97, 900STX 97-99, 1100ZXI 96-97



**KEIHIN METERING BLOCK
ASSEMBLIES**

Large high flow needle valve seat assembly.

Description	Part No.
1.8mm	53-2607
2.0mm	53-2609

POP-OFF PRESSURE CHART

Model	Spring Force	Spring Length	Part Number	Needle	Valve	Size
				1.6(std)	1.8	2.0
42mm	70gr.(std)	11mm	116B	24psi	21psi	18psi
	40gr.	9.17mm	116A	15psi	13psi	11psi
40mm mid range & 42mm Accp.	70gr.(std)	8.7mm	116D	N/A	N/A	N/A
	40gr.	7.4mm	116C	N/A	N/A	N/A

FUEL SYSTEMS
ENGINE/GASKETS
EXHAUST
DRIVE LINE HANDLING
ELECTRICAL
WATERLINE /BILGE
STEERING & CONTROLS
BODY
ACCESSORIES
SERVICE TOOLS /HARDWARE
CHEMICAL
FREESTYLE & 800SXR
FOUR STROKE

BLACK CARBURETORS JACK

BLACKJACK HIGH FLOW PERFORMANCE CARBURETORS

The BlackJack Carburetor is a high flow performance carburetor designed to be user friendly. It uses a proven annular discharge design with modified internal circuits. BlackJack Carburetors are easy to tune and don't load up, even under extreme conditions. And BlackJack Carburetors product instant throttle response with more bottom end power, better mid-range acceleration, and unmatched top end.



Description	Part No.
44mm BlackJack	53-2092
46mm BlackJack	53-2093
48mm BlackJack	53-2094
48mm Butterfly only 12 Degree	48-012



RIVA YAMAHA RACING CARBURETOR WITH POWER BOMB FUEL ATOMIZER

Riva Yamaha new racing carburetors feature a short press fit air bell that tapers from a massive 70mm to a true 48mm throttle plate. Starting with proven Mikuni Super-BN carburetors, each one is hand assembled with top shelf components. At the heart of carburetor is Riva's exclusive "Power Bomb" fuel atomizer, providing peak performance under all conditions. Hesitation and bogging are eliminated while delivering explosive acceleration and extreme top speed. Available individually with flange mount or spigot mount.



Description	Part No.
48mm Flange Mount	RY1200-R-48F



DUAL CARBURETOR SYSTEMS

Sea Doo	Carb	Flame Arrestor	Part No.
720	Mikuni 44mm	K&N	53-0915
720	Mikuni 46mm	K&N	53-0916
800	Mikuni 44mm	K&N	53-0925
800	Mikuni 46mm	K&N	53-0926

720 Kits also fit 650 & 580 Engines. Please specify for proper jetting.



All carburetor kits are assembled with the above listed K&N Filters, the filter size and shape is the best fit based on the watercraft. Filters will be substituted to complete the kits when the K&N Filters are not available.



HOT PRODUCTS CARBURETOR KITS

Yamaha	Carb	Flame Arrestor	Part No.
701 W/Rdr / 760 (62T)	Mikuni 44mm	K&N	53-0975
701 W/Rdr / 760 (62T)	Mikuni 46mm	K&N	53-0974
1100/1200	Mikuni 44mm	K&N	53-0980
1100/1200	Mikuni 46mm	K&N	53-0992

* See page 13 for crankcase application chart

Kawasaki	Carb	Flame Arrestor	Part No.
750	Mikuni 44mm	K&N	53-0830
750	Mikuni 46mm	K&N	53-0840

SINGLE CARBURETOR SYSTEMS

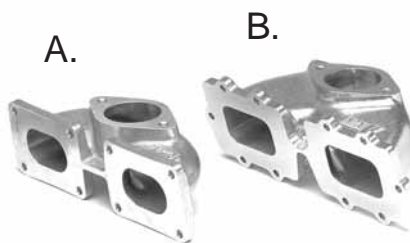
Kawasaki	Carb	Flame Arrestor	Part No.
650 SX/X2	Mikuni 44mm	K&N	53-0650
650 SX/X2	Mikuni 46mm	K&N	53-0660
750 All	Mikuni 44mm	K&N	53-0820
750 All	Mikuni 46mm	K&N	53-0825



All carburetor kits are assembled with the above listed K&N Filters, the filter size and shape is the best fit based on the watercraft. Filters will be substituted to complete the kits when the K&N filters are not available.

SINGLE INTAKE MANIFOLDS

FITS MIKUNI 44/46 MM



Kawasaki	Part No.
A. 650 All	53-0651
B. 750 All	53-0827



RIVA

Yamaha	Part No.
701/760 (62T/64X)	RY126M



FREE STYLE SINGLE INTAKE MANIFOLD ADAPTER KIT

This adapter makes a Kawasaki 650 single intake manifold fit on a Yamaha 701 case. Also ideal for Rental Yamaha watercraft for easy tuning.

Description	Part No.
Yamaha 701 Freestyle Intake Adapter Kit for Mikuni 44/46. Sold per set.	53-0652
Use with BCW Intake Manifold Part # 53-0651 listed above	

FUEL SYSTEMS
ENGINE/GASKETS
EXHAUST
DRIVE LINE HANDLING
ELECTRICAL
WATERLINE /BLGE
STEERING & CONTROLS
BODY
ACCESSORIES
SERVICE TOOLS /HARDWARE
CHEMICAL
FREESTYLE & 800SXR
FOUR STROKE

DUAL INTAKE MANIFOLDS FOR SEA DOO

FITS MIKUNI 44/46MM AND KEIHIN*

FUEL SYSTEMS
ENGINE/GASKETS
EXHAUST
DRIVE LINE HANDLING
ELECTRICAL
WATERLINE /BILGE
STEERING & CONTROLS
BODY
ACCESSORIES
SERVICE TOOLS /HARDWARE
CHEMICAL
FREESTYLE & 800SXR
FOUR STROKE



R&D

SEA DOO Part No.
580/650/720 53-0923



R&D

SEA DOO Part No.
XP800 Direct Flow 223-80001



R&D

SEA DOO Part No.
XP800 223-80000

*Also fits Keihin



R&D

SEA DOO Part No.
951 Dominator 223-95001
Must use with R&D M-16 Reed valve



R&D

SEA DOO Part No.
951 223-95000
Must use with part number 273-95000
R&D Stuffers

DUAL / TRIPLE INTAKE MANIFOLDS FOR YAMAHA

FITS MIKUNI 44/46MM



Boyesen/Full Spectrum
Extream Velocity Manifold System



Reed cage kit is not included.



Yamaha Part No.
701(62T) W/Rdr/760 222-76000
With Billet Carb. Plate
for **OEM Reed**
Mounting Plate Gasket 12-0010
Center to center 120 mm

Yamaha Part No.
701(62T)W/Rdr/760 IM001



R&D

Yamaha Part No.
GP1200R/GP1300R Dominator **232-12002**



R&D

Yamaha Part No.
1100/1200 (63M/65U) **232-11000**



R&D

Yamaha Part No.
GP800 with stuffers **222-80000**

DUAL / TRIPLE INTAKE MANIFOLDS FOR KAWASAKI FITS MIKUNI 44/46MM



R&D

Kawasaki Part No.
800SXR **231-75146**
With Billet Carb. Plate
for OEM Reed
Mounting Plate Gasket **12-0010**
Center to center 120mm



R&D

Kawasaki Part No.
800SXR **231-75148**
With Billet Carb. Plate
for MOTO TASSANARI reed
Mounting Plate Gasket **12-0010**
Center to center 120mm



R&D

Kawasaki Part No.
750 **231-75144**
Center to center 104mm



R&D

Kawasaki Part No.
800SXR for
Moto Tassanari Reed **231-75144-MT**



JetWorks

Kawasaki Part No.
Ultra 150/STX-R **53-0887**
*Sold separately *Use with OEM reed



R&D

Kawasaki Part No.
Ultra 150/STX-R Kit **231-15000**
*Use with M-16 reed only

Yamaha Crankcase Application Chart	
6M6	650LX, VXR, Wave Runner III, Super Jet 90-93
61X	Pro VXR, Wave Runner III GP, Super Jet 94-95, Fx-1 Wave Blaster 93-95 Raider 701 96-97
62T	Super Jet 96-01, Blaster II
64X	Wave Blaster 96-97, GP760 Raider 701/Deluxe/760 94-95 Venture 701/760, XL700/760
63M	Raider 1100, Venture 1100
65U	GP1200, XL1200, SUV1200
66E	GP800 Power Valve
66V	GP1200R, XL1200 LTD/XLT 99-01 Power Valve

FUEL SYSTEMS
ENGINE/GASKETS
EXHAUST
DRIVE LINE HANDLING
ELECTRICAL
WATERLINE /BLIGE
STEERING & CONTROLS
BODY
ACCESSORIES
SERVICE TOOLS /HARDWARE
CHEMICAL
FREESTYLE & 800SXR
FOUR STROKE



CARBURETORS LINKAGE

Linkage Kit	Part No.
Keihin	53-0602
Mikuni	53-0622
OEM Carb.	53-0628



CARBURETORS LINKAGE SLEEVES

Sleeve Only		Part No.
5/8"	16mm	53-9905
3/4"	19mm	53-9906
1"	25mm	53-9916
2-3/16"	56mm	53-9917
6"	152mm	53-9918



LINKAGE INSTALLATION TOOL FOR OEM CARB.

Description	Part No.
Linkage Installation Tool	53-0434



MIKUNI DUAL CARBURETORS LINKAGE KIT

Description	Part No.
Mikuni Dual Linkage Kit	MK-BN/001



JETWORKS LINKAGE

Using 120mm center to center aftermarket dual S/BN carburetor applications. It is made to have zero backlashes and will not compress after age.

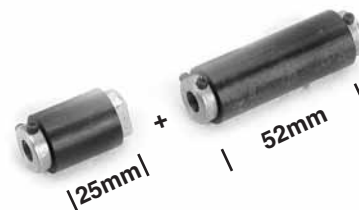
Description	Part No.
120 mm center to center	LK-2



TBM CARBURETOR SHAFT COLLARS

Designed to replace the e-clips that commonly break allowing the carburetor shaft to vibrate side to side damaging the butterfly's and carburetor bodies. Manufactured from stainless steel for corrosion prevention, the two-piece design allows installation without disassembling the carburetors.

Description	Part No.
Carburetor shaft collars	TBM108



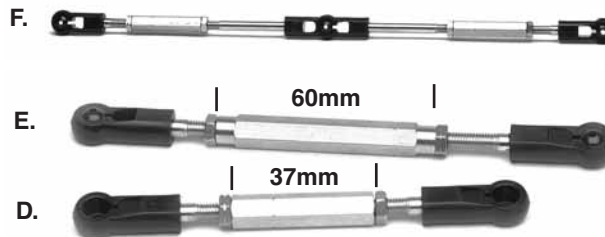
LINKAGE KIT FOR R&D MANIFOLDS

Description	Part No.
Ultra 150 for P/#231-15000	291-15000



THROTTLE ARM LINKAGE & CONVERSION ARM

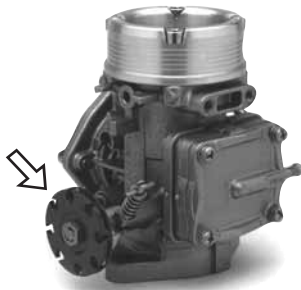
Description	Part No.
A. Throttle Arm (LH)	53-0611
B. Throttle Arm (Middle)	53-0612
C. Throttle Arm (RH)	53-0613



MIKUNI GENUINE OEM STYLE LINKAGE RODS

Description	Part No.
D. Sea Doo XP800	53-0615
E. Sea Doo 951	53-0616
F. Triple Carb Linkage Rod	53-0606

THROTTLE CABLE DRUM FOR MIKUNI



Hot Products original drum for Mikuni carburetors allows the use of any throttle cable and bracket on Mikuni carburetors. 8 positions, 18mm throw.

Description	Part No.
Hot Products Cable Drum 18mm Throw	53-2622



PJS Drums features a center web thin enough to allow use of nut with lock washer. "D" slot match the throttle shaft for a perfect fit. 12 positions and available in 20mm or 25mm throws

Description	Part No.
Standard Size (20mm throw)	53-2625
Oversized (25mm throw) For Oil injection and stock carburetors of Yamaha GP/XL	53-2627



THROTTLE CABLE BRACKETS FOR MIKUNI



Diaphragm Cover Mount Throttle Cable Bracket

Recommend for use with Hot Products Cable Drum Part #53-2622 8mm hole.

RY12-TCB



Body Mount Throttle Cable Bracket

53-3310



Kawasaki / Polaris / Tigershark - 10mm Hole

53-3317



Sea Doo / Yamaha / WetJet - 8mm Hole

53-3318



MIKUNI SLOTTED CABLE DRUM FOR LINKAGE

Description	Part No.
Cable Drum	53-2628



MOTOINE SOFT SPRING FOR MIKUNI

New Motoine Mikuni spring is 2/3 softer than original spring and reduces thumb and/or finger throttle fatigue.

Description	Part No.
Soft Spring	MR-00013



2006 WORLD FINALS • LAKE HAVASU, AZ
PHOTO COURTESY OF JIN OMURA

FUEL SYSTEMS
ENGINE/GASKETS
EXHAUST
DRIVE LINE HANDLING
ELECTRICAL
WATERLINE /BILGE
STEERING & CONTROLS
BODY
ACCESSORIES /SERVICE TOOLS
CHEMICAL
FREESTYLE & 800SKR
FOUR STROKE



RIVA TRIPLE FUEL PICKUP

Description	Part No.
GP1200R,XL1200 Ltd (1/4")	RY1009P-20
GP1300R (1/4")	



FUEL PICKUP FOR ZXI/STX-R

Provides maximum fuel flow to triple carbs

Description	Part No.
Kawasaki ZXI/STX-R	53-9957



ADA PICKUP FOR ULTRA

Description	Part No.
Kawasaki Ultra	KUFP



BLOWSION FUEL FILLER FOR KAWASAKI SX/SXI/SXI-PRO/SXR

Description	Part No.
Billet Dual Pick Up	KASXAL 143



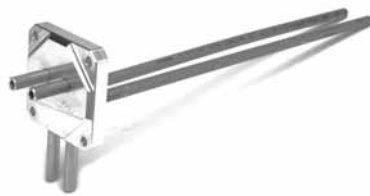
BLOWSION FUEL FILLER FOR YAMAHA SUPERJET AND POLARIS OCTANE

Description	Part No.
Billet Dual Pick Up	YAAMAL 140
Billet Single Pick Up	YAAMAL 141



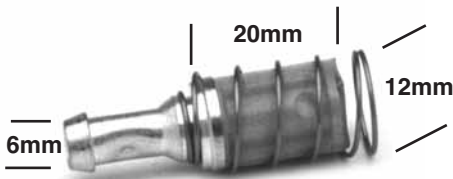
24-7 BILLET INTERNAL FUEL FILLER FOR YAMAHA SUPERJET

Description	Part No.
Dual Fuel Filler	DF-001
Single Fuel Filler	SF-001



BLOWSION RACING FUEL PICKUP FOR KAWASAKI SX/SXI/SXI-PRO/SXR

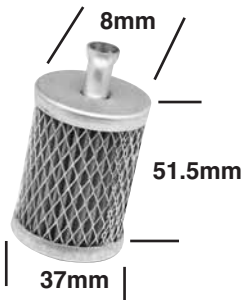
Description	Part No.
Billet Dual Pick Up	KASXAL144



FUEL TANK FILTER

Replaces Sea Doo #275-500-005

Description	Part No.
Universal Fuel Tank Filter	53-9946



FUEL TANK FILTER

Replaces Yamaha #8H5-224560-00

Description	Part No.
Universal Fuel Tank Filter	006-516



ONE WAY CHECK VALVE

One way vent valve allows fuel to travel in one direction only. 1/4" Fuel Line.

Description	Part No.
One Way Check Valve	53-9941



RIVA HIGH VOLUME FILTER

3/8" Fuel Line.

Description	Part No.
3/8" Riva High Volume Filter	RY-0503



2" SLIMLINE WITH BRONZE ELEMENT

Clear nylon housing and bronze 75 Micron Element. 2" length. 1/4" Fuel Line.

Description	Part No.
2" Slimline with bronze	53-9952
Display card with 20 Filters	53-9952D



3" SLIMLINE WITH POLYESTER ELEMENT

Lightweight high flow 90 Micron Polyester Element. 3" length. 1/4" Fuel Line.

Description	Part No.
3" Slimline with polyester	53-9953
Display card with 20 Filters	53-9953D



IN-LINE OIL FILTER

75 Micron Stainless Steel Element. 1.3" diameter, 1/4" Fuel Line. This filter works with fuel and oils. Perfect protection for oil pumps and oil injection engines.

Description	Part No.
Stainless Steel filter	53-9943
Display card with 20 Filters	53-9943D



HIGH-CAPACITY HIGH FLOW FILTER

80 Micron Paper Element. 1.6" diameter, 1/4" Fuel Line.

Description	Part No.
High Flow Paper Filter	53-9945
Display card with 20 Filters	53-9945D



HIGH PERFORMANCE CATALYTIC FILTER

A Fuel filter made of high impact nylon. Clean burning engines, better throttle response and some increase in power and fuel efficiency.

Description	Part No.
Catalytic Filter	53-9948



QUICK DISCONNECT RESTRICTOR

Mikuni main jets thread into the billet part of the restrictor. This kit is used on the return lines of carburetors to fine tune fuel pump pressures.

Description	Part No.
Quick Disconnect Restrictor 1/4"	QD-14



Recommended Main Jets:

Stock Carbs for 1200 (66V) 105
 Novi Carbs for 1200 (66V) 100-120
 Novi Carbs for 701 (61X) 100-120

FUEL RETURN LINE RESTRICTOR

Designed to improve throttle response and reduce lean conditions in power band, our new Fuel Return Line Restrictor installs into fuel return line between carburetors and fuel tank, restricting fuel return rate, increasing pressure to carburetors. Precision-machined billet restrictor is threaded to accept a Mikuni Main Jet (not included) to match your application. For use with OEM and aftermarket carburetors.

Description	Part No.
Fuel Return Line Restrictor	RY12-RLR-14



RIVA FUEL FILTERS

OE replacements fit stock mounting bracket in all Yamaha watercraft these fuel filters also serve as a water separator protecting the motor from water damage

Description	Part No.
OE Replacement filter (all except 66V/E)	RY-0501
OE Replacement filter 66V/E	RY-0502



1/4" FUEL LINE & 1/8" PRIMER LINE

Our fuel and primer line is made from a thick walled polyurethane tubing. Both fuel and primer line is blue. Sold per foot. or 25 feet/pk.

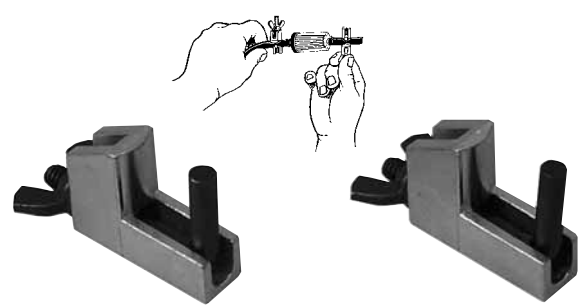
Description	Part No.
Fuel (1/4") per foot	53-9970
Fuel (1/4") 25 feet/pk	53-9970-25
Primer Line (1/8") per foot	53-9980
Primer Line (1/8") 25 feet/pk	53-9980-25



PRIMER LINE

Double layer constructed fuel hose for primer. Made in Japan. Sold in 25 feet/pk

Description	Part No.
Primer Line (I.D. 3mm/O.D. 7mm)	53-9985



HOSE PINCHERS

Quick, easy way to pinch off fuel lines, etc, without damaging the fuel line. Sold two per set.

Description	Part No.
Hose Pinchers	LS22850



FUEL FEED AND VENT HOSE

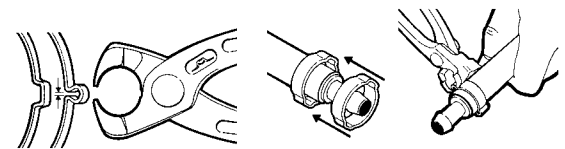
Designed to meet fuel hose specifications of SAE J1527 and ISO 7840. The barrier construction provides the lowest permeation rating available for any marine fuel hose. Formulated to handle gasoline, diesel and alcohol blended fuels. This hose meets all the requirements of the USCG, NMMA, ABYC and is certified by IMCI for use in the European community. The 360 series is an A-1 hose that can be used in a feed or vent application. The flame resistant cover is designed for enclosed engine compartment applications.

* Recommended to use with "squeeze on" clamp P/#59-4017

Description	Part No.
1/4" Fuel Feed & Vent Hose 25 feet/pk.	360-014
5/16" Fuel Feed & Vent Hose 25 feet/pk.	360-056



SQUEEZE ON STAINLESS STEEL CLAMPS



Description	Clamp Size	Part No.
Pincer Tool		59-4015
Clamp for 1/4" Hose (10 pcs/pk)	9/16	59-4016
Clamp for 3/8" Water Line (10 pcs/pk)	11/16	59-4017
Clamp for 1/2" Water Line (10 pcs/pk)	13/16	59-4018



FUEL LINE Q/D W/SHUT-OFF VALVE for 1/4" fuel line

Description	Part No.
Fuel Line Q/D w/Shut-off Valve	53-9951



PRIMER KITS

A cure for hard-starting motors. Draws fuel from the fuel line to give the carburetor a blast of fuel for easy starting. Eliminates chokes and adds to battery life. A must on high-performance modified carburetors with eliminated chokes. Hot Products primers are assembled with top-quality materials and include 9 feet of 1/8" blue primer hose to fit sit down craft. USA made top-quality plunger, brass "T" fittings, spigot, caps and zip ties.

Plunger Primer Kit	Part No.
Mikuni Primer Kit Single	53-9920
Mikuni Primer Kit Dual	53-9928
Mikuni Primer Kit Triple	53-9922
Keihin Primer Kit Single	53-9925
Keihin Primer Kit Dual	53-9929
Keihin Primer Kit Triple	53-9924



Spigot & Cap Kit

Brass T Fitting

Parts Only	Part No.
G. Mikuni Brass Spigot & Cap Kit	53-9921
Mikuni Brass Cap Only	53-9921B
H. Keihin Brass Spigot & Cap Kit	53-9926
Keihin Brass Cap Only	53-9926B
I. Brass T for Dual 1/8 x 1/8 x 1/8	64-0015
J. Brass T for Primer 1/4 x 1/4 x 1/8	64-0017
Primer Line 1/8 (Sold per foot)	53-9980



1/4" HOSE BRASS FITTINGS

Parts Only	Part No.
A. Straight: 1/8" Thread 1/4" Hose	64-0001
B. 90 Degree: 1/8" Thread 1/4" Hose	64-0010
C. 45 Degree: 1/8" Thread 1/4" Hose	64-0065
D. Barb Connector 1/4" I.D.-1/4" I.D.	64-0057



PRIMER ADD ON KITS

Mikuni and Keihin primer add on kits for use with dual and triple carb kits. One add on kit needed for duals, two needed for triples. Kit includes spigot and cap, T-fitting, 6" of 1/8" blue primer hose and zip ties.

Description	Part No.
Mikuni Primer Add On	53-9923
Keihin Primer Add On	53-9927



53-9915

53-9910A

Plunger Body Only

Plunger Primer Only	53-9910A
Button Primer Only	53-9915



PRESS IN NIPPLE

1/8" Straight	53-9936
1/4" Straight	53-9937



PLASTIC "Y" FITTINGS

Parts Only	Part No.
1/4" X 1/4" X 1/4" (White)	64-0046
1/4" X 1/4" X 1/4" (Black)	64-0047

FUEL SYSTEMS
ENGINE/GASKETS
EXHAUST
DRIVE LINE HANDLING
ELECTRICAL
WATERLINE /BLIGE
STEERING & CONTROLS
BODY
ACCESSORIES
SERVICE TOOLS /HARDWARE
CHEMICAL
FREESTYLE & 800SXR
FOUR STROKE



MIKUNI HIGH VOLUME FUEL PUMP

16 gallons/61 Liters per hour

Description	Part No.
Fuel Pump	53-3328
Fuel Pump Repair Kit	53-3328RP



SPIGOT MOUNT FLANGE FOR MIKUNI CARBURETOR

Description	Part No.
I-VM40-200-1 (Gold Band)	48
I-VM44-200-1 For Sea Doo 951 (Black band)	53
Bolts for SD951 (8.125 thread x 70mm, 2pcs)	53-Bolt

For easier removal and installation of carburetor for jetting and maintenance. Recommended to use with side draft manifold only.



NEW

CARBON REMOTE FUEL PUMP BRACKET

Use this ultra sano 100% carbon fuel pump bracket when adding remote fuel pumps. Lightweight and burly, this is the key to your mounting problems without adding weight or stress to the engine compartment.

Description	Part No.
Fuel Pump Bracket	KASRCO426



CARBURETOR ROTATION ADAPTER

This adapter mounts 44/46 Mikuni carburetor pumps front to back allowing consistent fuel flow to prevent hesitation during hard cornering.

Description	Part No.
Most PWC using 44/46mm Aftermarket Manifold	53-3301



SEA DOO DUAL FUEL PUMP UPGRADE KIT

A must for high performance engines with the OEM dual carbs with a single fuel pump. Kit adds a fuel pump to the rear carb, eliminating fuel starvation in the rear carb at high RPM. Includes pulse fitting and hose.

Description	Part No.
Sea Doo Fuel Pump Kit	53-3325



KEIHIN CARBURETOR ADAPTERS FOR MIKUNI CARBURETOR MANIFOLDS

Description	Part No.
This adapter allows mounting of Keihin CDKII 38, 42 carburetor to any popular O.E. or aftermarket 44mm Mikuni intake manifold.	53-3305

Description	Part No.
This adapter is designed to mount to the Keihin CDKII 38, 42 carburetor specifically to the Kawasaki JS440/550 piston port engine.	53-3308



MIKUNI PUMP BLOCK OFF

Absolutely necessary tool to get your set-up perfect. Eliminates guesswork and wasted time. For all brands

Description	Part No.
Pump Block Off	53-3330



HOT CARB HOLDER PLUGS

Description	Part No.
9/32" Sold in PK/10 pcs Universal plastic plug has many uses	53-9938



BILLET ALUMINUM OIL INJECTION BLOCK OFF



Polaris	Part No.
SL/SLT650/750SLX/SL SLT780 (Comes w/ case plug), SLX Pro 785	50-9502
SL700/SLT700/Hurricane SL900/SLTX/1050 (Oil injection plug only)	50-9509



Sea Doo	Part No.
580/650/720 All	50-9504



Sea Doo	Part No.
800/951	50-9506



Yamaha	Part No.
650/701/760	50-9500



Yamaha	Part No.
1100/1200/ GPR	50-9501

Kawasaki	Part No.
650/750	50-9500

Kawasaki	Part No.
900/1100	50-9503



Plastic Caps	Part No.
Small 1/8"	50-9500P
Large 3/8"	50-9504P



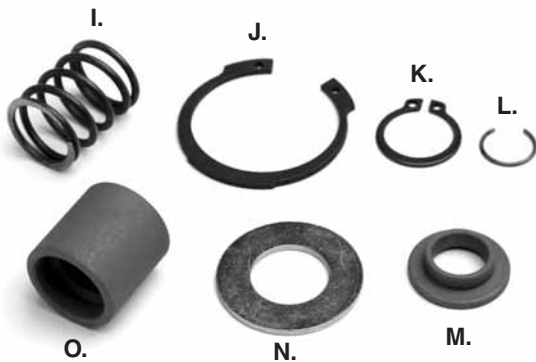
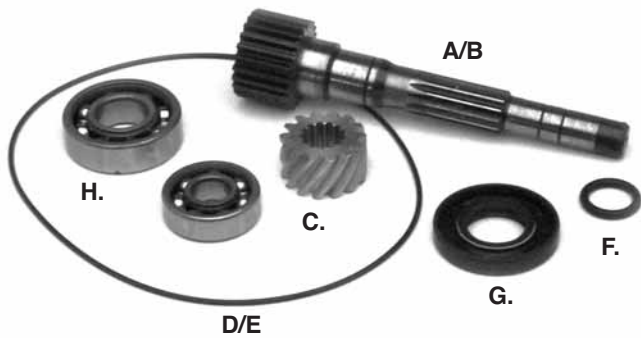
Kawasaki	Part No.
650/750	50-9505

CASE BLOCK OFF

FUEL SYSTEMS
ENGINE/GASKETS
EXHAUST
DRIVE LINE HANDLING
ELECTRICAL
WATERLINE /BILGE
STEERING & CONTROLS
BODY
ACCESSORIES
SERVICE TOOLS /HARDWARE
CHEMICAL
FREESTYLE & 800SXR
FOUR STROKE

ROTARY VALVE PARTS

FUEL SYSTEMS
ENGINE/GASKETS
EXHAUST
DRIVE LINE HANDLING
ELECTRICAL
WATERLINE /BILGE
STEERING & CONTROLS
BODY
ACCESSORIES
SERVICE TOOLS /HARDWARE
CHEMICAL
FREESTYLE & 800SXR
FOUR STROKE



ROTARY VALVE TIMING WHEEL

Description	Part No.
Rotary Valve Timing Wheel	012-170

SEA DOO ROTARY VALVE SHAFT AND PARTS

Descriptions	OEM#	Part No.
A. Rotary Valve Shaft 580/650/720	293-837-251	010-455
B. Rotary Valve Shaft 800	290-837-351	010-457
C. Rotary Valve Shaft Gear only (14 teeth) 580/650/720/800 (89-up)	420-935-735	010-450
D. Rotary Cover O-Ring 580/650/720	293-300-023	6250
E. Rotary Cover O-Ring 800	290-831-765	6628
F. Rotary Shaft O-Ring 580/650/720/800	293-300-024	6260
G. Rotary Shaft Oil Seal 580/650/720/800	290-930-580	009-779
H. Rotary Shaft Bearing 580/650/720/800	290-932-032 290-932-797	010-225 010-226

Descriptions	OEM#	Part No.
I. Rotary Shaft Spring 580/650/720/800	290-938-810	010-453
J. Rotary Shaft Snap Ring	290-845-260	010-483
K. 580/650/720/800	290-932-032	010-482
L. Rotary Shaft C-Clips 580/650/720/800	290-845-160	010-454
M. Rotary Spring Holder 580/650/720/800	420-827-430	010-484-01
N. Rotary Bearing Washer 580/650/720/800	420-227-439	010-459
O. Rotary Shaft Barrel 580/650/720/800	290-847-282	010-484



STAINLESS STEEL ROTARY VALVES

Model	Year	Opening Duration	Part No.
580 All	94-96	147°	006-147
650 All	94-95	159°	006-159
720	95-02	159°	006-159
785	95-02	159°	006-159



2006 WORLD FINALS
LAKE HAVASU, AZ
PHOTO COURTESY OF
JIN OMURA

Boyesen



BOYESEN POWER REEDS

- The unique dual-petal design
- Quicker acceleration, throttle response and speed.
- Dual-flex epoxy fiber material for maximum longevity and reliability.

Yamaha	Part No.
500 All	022
650 Super Jet	023
700 Wave Raider All	024
701 FX1 (94-95)	024
701 Pro-VXR (93-94)	024
701 Super Jet (94-95)	024
Wave Blaster (93-95)	024
Wave Raider (Single Carb) (96)	024
Wave Runner III (94-97)	024
701 Super Jet (96-02)	026
Wave Blaster (96)	026
Wave Raider (94-96)	026
Wave Raider DLX (95-96)	026
Wave Runner XL (99-02)	026
Wave Venture (95-98)	026
GP760(97-00), 760 Waves All (95-99)	029
1100 All (95-97)	028
GP1200(97-99), SUV1200(99-02)	033
XL1200(98)	033

Kawasaki	Part No.
550SX (91-95)	014
650SX/X2/SC/SS/ST/TS All	012
750SX/SXI/SXI-Pro All	013
750SS/STS/XI/ZXI All	013
900ZXI(-97), STX(97-01), STS(01)	020
1100ZXI/STX/DI(96-01)	021
Ultra 130(01), Ultra 150(99-02)	021
STX-R 1200 (02)	021

Polaris	Part No.
650 All (92-95)	016
SL750(93-95), SLT750(94-95)	016
SL780(96-97), SLT780(96-97)	016
SLT780(96-97), SLX780(96)	016
SLX785 Pro (97-02)	016
700 All (-02)	013
Hurricane (96-97)	013
SL900(96-97)	030
SL1050(97), SLTX1050(96-99)	031
SLX1050(98)	031
Pro/SLX/Virage TX 1200(00-02)	031
Genesis 1200/FFI (99-01)	031

Tigershark	Part No.
640 All (93-99), 770 All (96-99)	018
900 (95-96)	019
1000 All (97-98), TS1100 (99)	019



BOYESEN PRO SERIES REEDS

- Quicker acceleration for that all important holeshot.
- Crisper mid-range allowing you to pull that extra boat length.
- Carries RPMs further past peak allowing you to run that steeper pitched impeller for increased top end.
- Easy starting and smoother idling for those dreaded no-wake zones.
- Increased life over traditional carbon fiber reeds.

Yamaha	Stock Unlimited	Hi-Performance
700 Wave Raider All	PRO-34	PRO-35
701 FX1 (94-95)	PRO-34	PRO-35
701 Pro-VXR (93-94)	PRO-34	PRO-35
701 Super Jet (94-95)	PRO-34	PRO-35
701 Super Jet (96-02)	PRO-36	PRO-37
Wave Blaster (93-95)	PRO-36	PRO-37
Wave Raider (94-96)	PRO-36	PRO-37
Wave Raider, Single Carb (96)	PRO-34	PRO-35
Wave Raider DLX	PRO-36	PRO-37
Wave Runner III (94-97)	PRO-34	PRO-35
Wave Runner XL (99-02)	PRO-36	PRO-37
Wave Venture (95-98)	PRO-36	PRO-37
GP760 (97-00)	PRO-38	PRO-39
760 Waves All (96-99)	PRO-38	PRO-39
1100 All (95-97)	PRO-40	PRO-41
GP1200(97-99)	PRO-77	PRO-78
SUV1200(99-02), XL1200(98)	PRO-77	PRO-78

Kawasaki	Stock Unlimited	Hi-Performance
750 All	PRO-24	PRO-25
900 All	PRO-76	—
1100 All (96-02)	PRO-57	—
Ultra 130(01-02)	PRO-57	—
Ultra 150/STX-R1200(99-02)	PRO-57	—

Polaris	Stock Unlimited	Hi-Performance
700 All (-02)	PRO-26	PRO-27
750 All (93-95)	PRO-28	PRO-29
780 All (98-97)	PRO-30	PRO-31
785 SLX Pro (97-02)	PRO-30	PRO-31



FUEL SYSTEMS
ENGINE/GASKETS
EXHAUST
DRIVE LINE HANDLING
ELECTRICAL
WATERLINE /BILGE
STEERING & CONTROLS
BODY
ACCESSORIES
SERVICE TOOLS /HARDWARE
CHEMICAL
FREESTYLE & 800SX
FOUR STROKE



701(62T)/760(64X)/1100(63M)/1200(65U)	Rad Valve	Rad Reed	Gasket
Stock Intake Manifold in Stock applications	RAD-131*	PRO-131	2830
Riva or R&D Twin or Triple Intake Manifold	RAD-131R*	PRO-131R	2830

701(62T) ONLY

Use with Boyesen/Full Spectrum Exstream

Velocity Manifold System p/# IM001 (page 13) **RAD-131A** RL 131A** **2830**

* Order one set per cylinder, 2 valves for twin, 3 valves for triple cylinders.

** This kit contains 2 valves for 701 cylinders.

Sea Doo

CC	Model	Year	Performance Info	Part No.
951	All 951 models	97-06	Better mid & tpend for stock, limited and superstock motors: +4hp midrange,+2 top 206HT Highly modified motors for topend only	206SS OR 206HT

Polaris

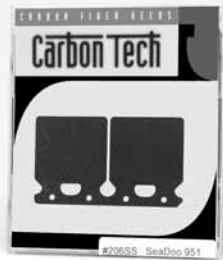
CC	Model	Year	Performance Info	Part No.
650	All 650 models	92-95	Better low to mid	317LT
700	All 700 models	96-04	Better bottom and midrange	275LT
750	All 750 models	93-95	Better mid (used by factory riders)	317LT
777	Octane	02-04	Better low to mid/stock, limited	275LT
	Virage I	02-04	Better mid to top for superstock	275MT
780	All 780 models	96-97	Better low to mid	317LT
780	SLX Pro 785	97-00	Best low to mid	317LT
			Best mid to top end: most durable	317HT
900	SL900	96-97	Increased rpm for higher top spd.	318LT
1050	All 1050 models	96-99	Increased rpm for higher top spd.	318LT
1165	All 1200 models	99-04	318LT More low end response	318LT or
			318HT Mid to top end: most durable	318HT
1192	MSX 140	03-04	More low end response	318LT
			Mid to top end: most durable	318HT

Yamaha

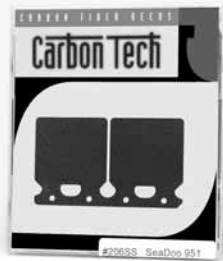
CC	Model	Year	Performance Info	Part No.
650	All 650 models	89-96	Smoother powerband	223LT
701	Wave blaster	93-95	225LT Stock cylinder, single carb.	225LT
	Superjet	94-95	225HT Sock cylinder, dual carbs	225HT
61X	FXI	94-95		or
CASE	PROVXR	93-94	225M Ported motors, single carb.	225M
	Waverunner III	94-95,97	225SS Ported motors, dual carbs	225SS
	Waveraider	96-97		
701	Waveraider	94-95		
with	Waveblaster	96	202LT +3HP in midrange: for limited and stock motors	202LT
62T	Superjet	96-06		or
CASE	Wave Venture	95-98	202SSKT Special kit for superstock applications	202SSKT
	XL 700	99-04		
760	All 760 Models	96-00	202LT +3 HP in mid, +2HP top end for limited and non-ported rec boats	202LT
			202HT Best choice for 760 superstock motors or fuel injected 701 motors	202HT
800	GP800	98-00	Better midrange & topend for stock	266HT
	GP800R	01-05	Limited & superstock motors: Gives 100 RPM=1 MPH	
	XL/XLT 800	00-04	(tested by Pro-Tec)	
1100	All 1100 models	95-97	Better midrange	302LT
1131	GP1200	97-99	*+3 HP mid to top: limited racing	338LT
	XL1200	98-99	Superstock & recreational motors	338SS
	SUV1200	99-04	Top end: only choice for fuel Ing.	338HT
1176	XL1200ltd	99-00	Stock motors, single pipe motors	366HT
	XLT1200	01-05	Single pipe, limited triple pipe	366SS
	GPI1200R	00-02	Ported triple pipe motors	366R
1296	GP1300R	03-06	Stock motors, single pipe motors	366HT
			Single pipe, limited triple pipe	366SS
			Ported triple pipe motors	366R

Kawasaki

CC	Model	Year	Performance Info	Part No.
550	ALL	91-95	Smoother powerband	239LT
650	ALL	86-96	Improved low to midrange	212LT
743	ALL	92-02	Better low & mid: stock & limiteds	238LT
			Superstock & ported motors	238SS
			High RPM, stroked or fuel injected	238HT
			Better low & mid: stock & limiteds	238LT
782	800 Motor	03-06	Superstock & ported motors	238SS
			High RPM stroked or fuel injected	238HT
			Better midrange and bottom end	338LT
			Superstock & ported motors	338SS
891	ALL 900 MOTORS	95-06	Better midrange and bottom end	338LT
1071	ALL 1100 MOTORS	96-04	Superstock & ported motors	338SS
			Better low & mid: stock & limiteds	338LT
			High RPM, stroked or fuel injected	338HT
1176	Ultra 150	99-05		338LT, 338SS
	1200STXR	04-05		or 338HT



Carbon Tech



FUEL SYSTEMS

ENGINE/GASKETS

EXHAUST

DRIVE LINE HANDLING

ELECTRICAL

WATERLINE /BILGE

STEERING & CONTROLS

BODY

ACCESSORIES

SERVICE TOOLS /HARDWARE

CHEMICAL

FREESTYLE & 800SXR

FOUR STROKE



NEW V-FORCE DELTA 2



Sea Doo	Delta 2	Delta 2 Repl. Pedal	Delta 1 Repl. Pedal (97-99)	Repl. Gasket
GSX/GTX/XP 951*	V2W121-2	2P127-1	DP120-1	6755

Polaris

SL650,SL/SLT750				
SLX780/785 Pro	V2W131-3	2P117-1		4050
SL900/SLTX1050	V2W132-3	2P117-1		4050
Octane 777	V3130-794A-2	3P794A-1		

Yamaha

All Triples	V2W140-3	2P127-1	DP120-1	4430
All Twins**	V2W140-2	2P127-1	DP120-1	2830

Kawasaki

All Triples	V2W150-3	2P127-1	DP120-1	MT6150
All Twins	V2W150-2	2P127-1	DP120-1	MT6150

*must use with part #53-0939 R&D Manifold

**except older Blasters



- Instant Throttle Response
- Increased Acceleration
- Unsurpassed Performance & Reliability
- Up to 20% Gain in Horsepower
- 100% Aluminum Construction

- Sold as complete system per engine.
- Replacement pedals and gasket: sold one set for each reed valve.



R&D MONSTER M-16 POWER VALVE



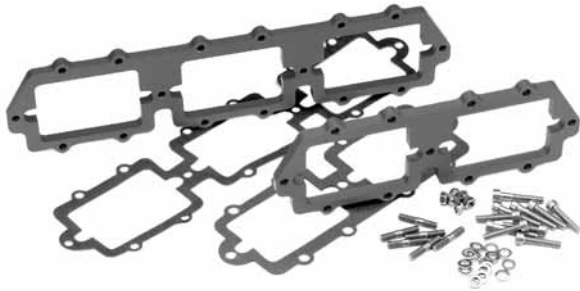
Yamaha	Part No.
Super Jet 96+ Intake Manifold for M16 only	262-20701-INMANI

Kawasaki	Part No.
750/800 M16 Reed Valve & Intake Manifold Kit	261-20750
750/800 M16 Reed Valve & (2) Kit ONLY	261-30750

Sea Doo/Kawasaki	Part No.
Replacement Pedal (Double Stage) per Valve (Supersede #263-00951, 262-00011, 262-00200. This pedal fits all M16 valves except old style GP 12000R M16)	261-00000

Sea Doo	Part No.
951 All Intake Manifold for M16 only	263-20951-INMANI

FUEL SYSTEMS
ENGINE/GASKETS
EXHAUST
DRIVE LINE HANDLING
ELECTRICAL
WATERLINE /BILGE
STEERING & CONTROLS
BODY
ACCESSORIES
SERVICE TOOLS /HARDWARE
CHEMICAL
FREESTYLE & 800SXR
FOUR STROKE



REED VALVE SPACER BOOSTERS

Yamaha	Part No.
701/760 (62T/64X) Case	RY124M-S
701/760 Spacer Gasket	53-5235-GSK
1100/1200 (63M/65U) Case	RY128M-S
1100/1200 Spacer Gasket	53-5236-GSK



R&D REED VALVE SPACERS

Yamaha	Part No.
701/760 (62T/64X) Reed Spacer Angled	262-70101



JSU ANGLED REED SPACER

Angled to direct intake airflow up into the transfer ports on cylinder. This reed spacer kit is the easiest way to bolt on a 3 HP gain. Kit comes complete with all the hardware and gasket needed for installation.

Kawasaki	Part No.
K750/800SXR Angled Reed Spacer	JSU 800-RSK



SEA DOO REED VALVE SPACERS

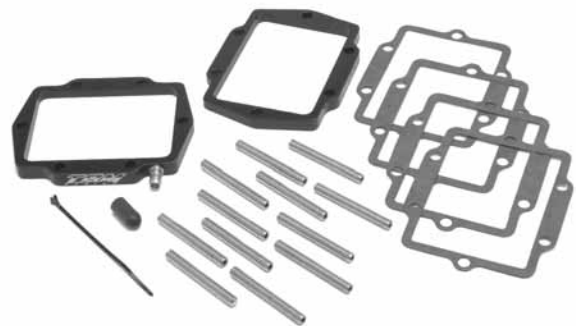
Improve low end/mid-range response, torque and horsepower.

Sea Doo	Part No.
951 ALL	53-5239



*Hardware not included.

Kawasaki	Part No.
750/800 Spacer	251-75010
750/800 Spacer Angled	251-80000
Reed Gasket	7050
6x50mm Stainless Steel Studs (Sold Each)	62-3050



TBM ANGLED REED SPACER

TBM angled reed spacers position the reed cages in the optimal position for fuel atomization. Key features include a full 3 degrees of angle, an integrated pulse fitting, which allows you to add a second pulse line without drilling your crankcases. Compatible with stock, or aftermarket cages these spacers come complete with all necessary hardware and gaskets.

Kawasaki	Part No.
K750/800SXR Angled Reed Spacer	TBM106



Sea Doo **Part No.**
 98GS/XL/XPL/GTXL **273-95000**
 *Excluded 97GS/XL
 950 Used with R&D Manifold 223-95000



REED VALVE STUFFERS

- Improves Airflow
- Quicker Throttle Response
- Easy Installation

R&D Reed Value Stuffers significantly increase low-speed air velocity. This dramatically improves low/mid range throttle response and also top end performance. Exclusive internal wing design increases overall velocity through reed assembly.



Yamaha **Part No.**
 94-95 701 Raider / 760 **272-70301**
 Raider 96 701 Venture,
 96 Blaster / Blaster2
 96+ Super Jet OEM Manifold



Yamaha **Part No.**
 GP 1200R/GP1300R
 OEM Manifold **272-12000**



Kawasaki **Part No.**
 750/800SXR OEM Manifold **271-75001**
 750/800SXR R&D Manifold **271-75000**



RIVA/BOYESEN REED STUFFERS

Riva precision aluminum reed stuffers were designed to increase fuel/air velocity through the intake tract, resulting in increased throttle response and acceleration. These stuffers fit your stock reed cages and match perfectly with the original intake manifold. Will not warp or loose shape like traditional plastic stuffers. A very economical bolt-on performance modification.

Yamaha **Part No.**
 701 (62T) 2 pcs. **RY1402**

REPLACEMENT THROTTLE CABLES



Sea Doo	OEM#	Part No.
720 XP 95, 800 SPX 97-99,	277-000-468	002-039-03
800 SP 95-96		
580XP 91, 580GT 90-91	277-000-098	002-037
Yamaha		
500WR '87-'93, 650SJ '90-'93,	EUO-U7252-01	58-3501
650 WR/WRIII/LX/WR VXR '90-'96		
701 SJ '90-'95, WR701 '96-'97, W/B701 '93-'95,		
701WRII GP '94-'95,		
701 WR Pro VXR '93-'94, 701 WRII '97		
701 WR DX 95, 701 WV 95-96	GJ1-U7252-00	002-057
1100 WR 95-96, 1100 WV 96		
Kawasaki		
440 '77-'86, 550 '82-'86	54012-3001	58-3121

FUEL SYSTEMS
ENGINE/GASKETS
EXHAUST
DRIVE LINE HANDLING
ELECTRICAL
WATERLINE /BLIGE
STEERING & CONTROLS
BODY
ACCESSORIES
SERVICE TOOLS /HARDWARE
CHEMICAL
FREESTYLE & 800SXR
FOUR STROKE



RACING FLAME ARRESTORS

(without Cotton Media)

Experience increased horsepower and engine protection with K&N Personal Watercraft flame arrestors for both normal and race applications. K&N "RACING ONLY" flame arrestors have an epoxied screen filter that does not have the cotton media.

K&N flame arrestors replace the restrictive factory airbox. In most cases an adapter is required (for adapters see pages 30 & 31) to mount the flame arrestor onto the carburetor. Some watercraft may require a slight adjustment to the carburetor's fuel circuits to allow for optimum performance.

4" Tall



Height	Top Color	Part No.
4"	Black Composite	59-2040RK
4"	Stainless Steel	59-2040R
Water Repellent Pre-Filter		WR145-10-4DT

2-1/2" Tall



Height	Top Color	Part No.
2-1/2"	Black Composite	59-2042RK
2-1/2"	Chrome	59-2042R
Water Repellent Pre-Filter		WR145-115-25DT

1-1/2" Tall



Height	Top Color	Part No.
1-1/2"		59-2044R

2" Tall



Height	Top Color	Part No.
2"	Black Metal Top	59-2046
Water Repellent Pre-Filter		WR125-2DT



2006 WORLD FINALS
LAKE HAVASU, AZ
PHOTO COURTESY OF
JIN OMURA

K&N REGULAR FLAME ARRESTORS

(with Cotton Media)

Regular K&N flame arrestors come with K&N's oiled cotton media sandwiched between screen material.

K&N flame arrestors replace the restrictive factory airbox. In most cases an adapter is required (for adapters see pages 30 & 31) to mount the flame arrestor onto the carburetor. Some watercraft may require a slight adjustment to the carburetor's fuel circuits to allow for optimum performance.



SINGLE 4-1/2" X 7" OVAL

Height	Part No.
2" Tall	59-2000
3" Tall	59-2860
3" Tall (45 degree)	59-2010
3" Tall (40 degree/Tapered)	59-2015
2" Mikuni Wet Suite	25-5911

DUAL 5-1/2" X 9" OVAL

Height	Center to Center	Part No.
2-1/2" Tall		59-2840
2-1/2" Tall		59-2910

HOT PRODUCTS RACING POWER FILTERS

by Tau Ceti



Tau Ceti's new Pro Series II Flame Arrestors are constructed from top quality materials such as aircraft grade aluminum, stainless steel, and a superior quality rubber base. This Flame Arrestor is designed with both duration and superior performance in mind. Using an extremely light anodized aluminum top in Silver, Black, Blue, Green and Red and a stainless steel mesh, this product is 100% corrosion resistant. With our free flowing, , we achieved an increase in acceleration and a much better throttle response. The universal rubber mount will fit any personal watercraft with a stock carburetor using the appropriate adapter (for adapters see pages 30 & 31). No re-jetting is necessary on stock boats.



Description	Part No.
Cone Filter 3" Silver	53-4275-SIL
Cone Filter 3" Black	53-4275-BLK
Cone Filter 3" Blue	53-4275-BLU
Cone Filter 3" Green	53-4275-GRN
Cone Filter 3" Red	53-4275-RED
Water Repellent Pre-Filter	WR125-10-35DT

Description	Part No.
Round Filter 2" Silver	53-4272-SIL
Round Filter 2" Black	53-4272-BLK
Round Filter 2" Blue	53-4272-BLU
Round Filter 2" Green	53-4272-GRN
Round Filter 2" Red	53-4272-RED
Water Repellent Pre-Filter	WR125-2DT

Description	Part No.
Round Filter 1.5" Silver	53-4270-SIL
Round Filter 1.5" Black	53-4270-BLK
Round Filter 1.5" Blue	53-4270-BLU
Round Filter 1.5" Green	53-4270-GRN
Round Filter 1.5" Red	53-4270-RED
Water Repellent Pre-Filter	WR125-15DT

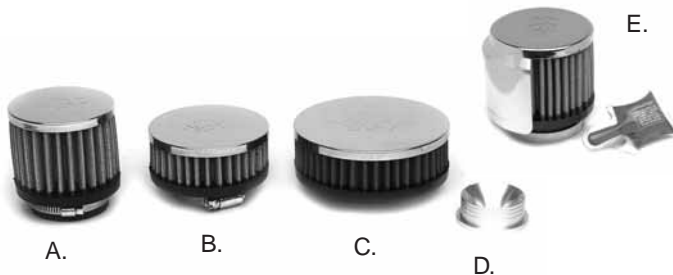


MOTOINE RACING

MOTOINE FLAME ARRESTOR

Bottom I.D. 2-3/4" Height 2-3/8", Super Flow Flame Arrestor. Proven performance for years in Japan. This filter named "氣", means "Air" and "Ancient natural Power by breathing", which only superhuman master can control. SAE.J 1928

Description	Part No.
Motoine Super Flow Flame Arrestor	MR-00009-01



K&N FILTERS AND ADAPTER FOR GO-PED®

Description	Part No.
A. K&N 3" x 2-1/2"	62-1480
B. K&N 3-1/2" x 1-1/2"	RC-2870
C. K&N 4-1/2" x 1-1/2"	RC-0340
D. Adapter for K&N	20-1001
E. K&N 3" x 2-1/2" W/chrome shield	62-1515



RIVA POWER FILTER FOR GP1300R

Power filter fits directly onto OEM air box assembly. Kit comes with water repellent filter.

Yamaha	Part No.
Flame Arrestor, Power Filter Kit GP1300R (60T).	RY1312

FUEL SYSTEMS	ENGINE/GASKETS	EXHAUST	DRIVE LINE HANDLING	ELECTRICAL	WATERLINE /BLGE	STEERING & CONTROLS	BODY	ACCESSORIES	SERVICE TOOLS /HARDWARE	CHEMICAL	FREESTYLE & 800SXR	FOUR STROKE
--------------	----------------	---------	---------------------	------------	-----------------	---------------------	------	-------------	-------------------------	----------	--------------------	-------------

APPLICATIONS FOR K&N FILTERS & ADAPTERS

Model	Stock Carb Type & Quantity	Race K&N P#	Regular K&N P#	Adapter P#
SEA DOO				
580GTX 92-94	2/38M	59-2040RK	59-2910	53-4460
580GT 89-96	1/38M	59-2042RK	59-2010	53-4460
580GTS 93-96	1/38M	59-2042RK	59-2010	53-4460
580SP 88-96	1/38M	59-2042RK	59-2010	53-4460
580SPX 92-94	2/38M	59-2042RK	59-2910	53-4460
580 SPI 88-96	1/38M	59-2042RK	59-2010	53-4460
650XP 94	2/40M" ¹ "	59-2042RK		53-4465
650XP 90-93	2/40M" ¹ "	59-2042RK		53-4465
650GTX 95	2/40M" ¹ "	59-2040RK		53-4465
650SPX 95	2/40M" ¹ "	59-2042RK		53-4465
720XP 95	2/40M" ¹ "	59-2042RK		53-4465
720GTI 97-99	1/40M" ¹ "	59-2040RK		53-4465
720GTI 96	2/40M" ¹ "	59-2040RK		53-4465
720GTS 97-00	1/40M" ¹ "	59-2042RK	59-2010	53-4465
720SP 97	1/40M" ¹ "	59-2042RK	59-2010	53-4465
720SPX 96	2/40M" ¹ "	59-2042RK		53-4465
720HX95-97	2/40M" ¹ "	59-2040RK	59-2010	53-4465
720GS 97-00	1/40M" ¹ "	59-2040RK	59-2010	53-4465
720GSI 97	1/40M" ¹ "	59-2040RK		53-4465
800GTX 96-97	2/40M" ¹ "	59-2040RK		53-4465
800GSX 96-97	2/40M" ¹ "	59-2040RK		53-4465
800XP 95-97	2/40M" ¹ "	59-2042RK		53-4465
800SPX 97-99	2/40M" ¹ "	59-2042RK		53-4465
950GSX LTD 97-99	2/46M" ¹ "	59-2042RK		not required
950XP LTD 98-00	2/46M" ¹ "	59-2042RK		not required
950GTX LTD 98-99	2/46M" ¹ "	59-2042RK		not required
YAMAHA				
W/Jammer 500 88-89	1/38M	59-2042RK	59-2000	53-4460
W/Runner 500 88-89	1/38M	59-2042RK	59-2000	53-4460
W/runner 650 90-95	1/44M	59-2042RK	59-2000	53-4480
W/Runner III 650 90-95	1/44M		59-2020	
VXR 650 91-95	1/44M		59-2020	
Super Jet 650 90-93	1/44M	59-2042RK	59-2000	53-4480
W/Raider 701 94-95	2/38M	59-2040RK		53-4462
W/Raider 70196-97	1/44M	59-2040RK		53-4482
W/Venture 701 95-98	2/38M	59-2040RK		53-4462
W/Blaster 701 96-97	2/38M	59-2042RK		53-4462
W/blaster 701 93-95	1/44M		59-2020	85-9491
Super Jet 701 94-95	1/44M	59-2042RK	59-2000	53-4480
Super Jet 701 96-00	2/38M	59-2042RK		53-4460
FX1 701 94-95	1/44M	59-2042RK	59-2000	53-4480
XL700 95-00	2/38M	59-2042RK		53-4462
GP760 97-00	2/44M	59-2040RK		53-4480
XL760 98-99	2/44M	59-2040RK		53-4482
W/Raider 760 96	2/44M	59-2040RK		53-4482
W/blaster II 760 96-97	2/44M	59-2040RK		53-4480
W/Venture 760 96-98	2/44M	59-2040RK		53-4480
GP800 98-00	2/44M NEW	59-2044R		53-4466
W/Raider 1100 95-06	3/38M	59-2040RK		53-4462
W/Venture 1100 96-98	3/38M	59-2040RK		53-4462
XL1200 98	3/44M	59-2040RK		53-4480
GP1200 97-99	3/44M	59-2040RK		53-4480
GP1200R 00	3/44M NEW	59-2044R		53-4466
KAWASAKI				
JS300 86-91	1/38M	59-2042RK	59-2000	53-4460
JS400 74-76	1/38M	59-2042RK	59-2000	53-4460
JS440 77-90	1/38M	59-2042RK	59-2000	53-4460
JS440 91-92	1/42K	59-2042RK	59-2000	53-4440
JS550 82-85	1/38M	59-2042RK	59-2000	53-4460
JS550 86-90	1/44M	59-2042RK	59-2000	53-4480

Model	Stock Carb Type & Quantity	Race K&N P#	Regular K&N P#	Adapter P#
KAWASAKI				
JS550SX 91-95	1/42K	59-2042RK	59-2000	53-4440
650X2 89-94	1/28K	59-2042RK	59-2015	
JS650SX 89-94	1/28K	59-2042RK	59-2000	
650TS 89-96	1/38K	59-2042RK		53-4440
650SC 90-95	1/38K	59-2042RK	59-2000	53-4440
750SX 92-95	1/40K	59-2042RK	59-2860	53-4440
750SXI 95	1/38K	59-2042RK		53-4450
750SXI 96-97	2/40M" ¹ "	59-2042RK		53-4465
750SXI PRO 98-00	2/40M" ¹ "	59-2042RK		53-4465
750SS 92-98	1/40K	59-2042RK	59-2860	53-4440
750XI 93-97	2/40K	59-2042RK		53-4440
750XIR 94	2/40K	59-2042RK		53-4440
750T 94-95	1/40K	59-2042RK	59-2860	53-4440
750STS 95-97	2/38K	59-2042RK		53-4450
750ZXI 95-98	2/38K	59-2042RK		53-4450
900ZXI 95-97	3/38K	59-2040RK		53-4450
900STX 97-99	3/38K	59-2040RK		53-4450
1100ZXI 96-97	3/38K	59-2040RK		53-4450
1100STX 97-99	3/38K CDCV	59-2040RK		AD-K38-12
ULTRA150 99-00	3/40K CDCV	59-2040RK		K40-TA02
POLARIS				
SL650 92-95	3/38M	59-2042RK		53-4460
HURRICANE700 96-97	2/38K	59-2042RK		53-4440
SL/SLT700 96-97	2/38K	59-2042RK		53-4440
SLH700 98-00	2/38K	59-2042RK		53-4440
SL/SLT750 93-95	3/38M	59-2042RK		53-4460
SL/SLT780 96-97	3/38M	59-2042RK		53-4460
SLX780 95-96	3/38M	59-2042RK		53-4460
SLXPRO785 97-00	3/44M	59-2042RK		53-4480
SL900 96-97	3/38K	59-2042RK		53-4440
SL/SLTX1050 96-00	3/38K	59-2042RK		53-4440
SLXH1050 98-99	3/38K	59-2042RK		53-4440
Genesis 99-00	3/38K	59-2042RK		53-4440
1200 PRO 00	3/38K	59-2042RK		53-4440
Virage/TX 00	3/38K	59-2042RK		53-4440
TIGER SHARK				
Daytona650 92-93	1/46M	59-2042RK		53-4490
Daytona650 95	2/38M	59-2042RK		53-4460
MonteCarlo650 94-95	1/46M	59-2042RK		53-4490
MonteCarlo650 96	1/44M	59-2042RK		53-4480
MonteCarlo650 97	1/40M" ¹ "	59-2042RK		53-4465
Montego650 94-96	1/44M	59-2042RK		53-4480
Montego650 97	1/40M" ¹ "	59-2042RK		53-4465
Barracuda650 93-95	1/46M	59-2042RK		53-4490
Daytona770 96-97	2/40M" ¹ "	59-2042RK		53-4465
MonteCarlo770 96-97	2/40M" ¹ "	59-2042RK		53-4465
MonteCarlo900 95	3/44M	59-2042RK		53-4480
MonteCarlo900 96	3/40M" ¹ "	59-2042RK		53-4465
Daytona1000 97-98	3/40M" ¹ "	59-2042RK		53-4465
MonteCarlo1000 97-98	3/40M" ¹ "	59-2042RK		53-4465
TS640 98-99	1/38M	59-2042RK		53-4460
TS770 98-99	1/38M	59-2042RK		53-4460
TS770R 98-99	2/38M	59-2042RK		53-4460
TS770L 98	2/38M	59-2042RK		53-4460
TS770L 99	1/38M	59-2042RK		53-4460
TS1000 98	3/40M" ¹ "	59-2042RK		53-4465
TS1000L 98	3/40M" ¹ "	59-2042RK		53-4465
TS1100R	3/40M" ¹ "	59-2042RK		53-4465

ALUMINUM AIR FILTER ADAPTERS FOR KEIHIN CARBURETORS, SOLD EACH



Keihin Part No.
38/40/42mm (50mm Bore) **53-4440**



Keihin Part No.
OEM Carb (44mm Bore) **53-4450**
K750 SXI-95,750ZXI, K900/1100ZXI



Keihin CDCV Part No.
Ultra 150/STX-R **AD-K40-14**
ZXI/STX 98-02 **AD-K38-12**

ALUMINUM AIR FILTER ADAPTERS

FOR MIKUNI CARBURETORS. SOLD EACH.



Mikuni	Part No.
38mm 38mm Bore	53-4460
44mm 46mm Bore	53-4480
46mm 48mm Bore	53-4490



Mikuni	Part No.
38mm w/oil injection only	53-4462
44mm w/oil injection only	53-4482



Mikuni	Part No.
OEM 40mm "I" Series (48mm Bore)	53-4465
Sea Doo HX/XP, K750 SXI 96-02, K800SXR 03-06	



Mikuni	Part No.
OEM Carb Yamaha GPR Series (57mm Bore)	53-4466



OIL INJECTION SPACER PLATES

Description	Part No.
Mikuni 44mm	53-4485
Mikuni 46mm	53-4495
Press in Nipple (1/8") only	53-9936

Outerwears

Racing Accessories

Water repellent pre-filter for K&N, Tau Ceti, ProK and R&D. Protects from unwanted water intrusion without restricting air flow.



Description	Flame Arrestor Type	Part No.
A. 4.25" x 3" Taper/4" Tall	K&N 59-2040R/RK	WR145-10-4DT
B. 4.25" x 3.5" Taper/2.5" Tall	K&N 59-2042R/RK	WR145-115-25DT
C. 4" dia/1.75" Tall	Tau Ceti 53-4270	WR125-15DT
D. 4" dia/2.25" Tall	Tau Ceti 53-4272. ProK	WR125-2DT
E. 4" dia/2.25" Tall (Open Top)	Tau Ceti 53-4272, ProK	WR125-225
F. 4" x 3" Taper/3.5" Tall	Tau Ceti 53-4275	WR125-10-35DT
G. Pro-Lock SD951/2.5" Tall	R&D 203-95000	WR30-25DTPRO



MIKUNI WETSUIT FOR K&N

Silicone treated foam filter wrap designed to repel water. For 2" single K&N filter (Part# 59-2000 see page 28)

Description	Part No.
Mikuni Wetsuit Blue	25-5911

FUEL SYSTEMS
ENGINE/GASKETS
EXHAUST
DRIVE LINE HANDLING
ELECTRICAL
WATERLINE /BILGE
STEERING & CONTROLS
BODY
ACCESSORIES
SERVICE TOOLS /HARDWARE
CHEMICAL
FREESTYLE & 800SXR
FOUR STROKE



R&D PRO-LOCK POWER PLENUM

FOR TWO STROKE MOTOR



Kawasaki	Part No.
1200STXR Stock Carb/Stock Pipe	200-01240
1200STXR With Triple Pipe	200-02240

Kawasaki	Part No.
800SXR Stock Carb (I Series Adapters Included)	200-00800
800SXR Aftermarket Carb	200-00120
120mm center to center (Adapter not included)	



Sea Doo	Part No.
951 All	203-95000

Yamaha	Part No.
GP1300R Stock Fuel Injection	200-13143
GP1200R/XLL/XLT1200	200-00142

Kawasaki	Part No.
Ultra 150 1200cc Stock Carbs	200-00140

FOR FOUR STROKE MOTOR



R&D GTX 4-TEC SUPERCHARGER FILTER KIT

The R&D GTX 4-TEC high performance "supercharger" air intake/filter kit will eliminate power robbing air intake restriction caused by a long intake tube design and promote a noticeable bolt of low and mid range acceleration and boost top end performance 1 - 1.5 mph! Rev up additional 100 plus RPM's. The filter kit installs very easily in 10-20 minutes, and has provisions in the filter to install the OEM crankcase ventilator!

R&D POWER PLENUM FILTER KIT

The new R&D RXP Power Plenum Air Filter Kit will get the job done with definite noticeable increase in throttle response and acceleration, as well as increase RPM's between 50 - 100! R&D Power Plenum Filter Kits have been dyno tested and race proven to add 3 to 5 horsepower on stock four stroke 1500cc engines! The R&D RXP Power Plenum Filter Kit gives the RXP 215's engine a high performance racing look, sound, and performance without sacrificing an ounce of reliability!

Sea Doo	Part No.
GTX 4-TEC Supercharged, RXT	203-95003

Sea Doo	Part No.
Sea Doo RXP	203-00215



**R&D POWER PLENUM
HIGH PERFORMANCE
FLAME ARRESTOR KIT**

The new R&D F12 / F 15 Power Plenum Air Filter kit delivers a noticeable increase in throttle response and acceleration, as well as increase RPM's between 50 and 100.

Kawasaki Part No. **215-15010**
STX-F12/F-15



**R&D REPLACEMENT
PERFORMANCE FILTER**

The new R&D Replacement Performance Filter replaces the stock restrictive perforated filter plate and allows for improved airflow. Amounts directly into the stock filter box and retains the OEM look. The improved airflow increases throttle response, RPM, and top speed.

Kawasaki Part No. **215-15000**
STX-F12/F15



R&D POWER PLENUM FILTER

The new R&D Honda R-12X Power Plenum Filter delivers a noticeable increase in throttle response and acceleration, as well as increase RPM's between 50 and 100.

Honda Part No. **200-51200**
R-12X



**R&D POWER PLENUM
FLAME ARRESTER**

The R&D High Flow Power Plenum replaces the restrictive stock flame arrester allowing more improved airflow, why? Because more air flow with less restriction means more power!

Yamaha Part No. **200-00144**
FX 140/Cruiser
FX HO/Cruiser



**R&D HIGH FLOW POWER PLENUM
AIR BREATHER**

The R&D High flow breather is a direct replacement for the stock breather in the OEM air box. Water tested to deliver improved throttle response, acceleration and top speed with 50-100 RPM increase.

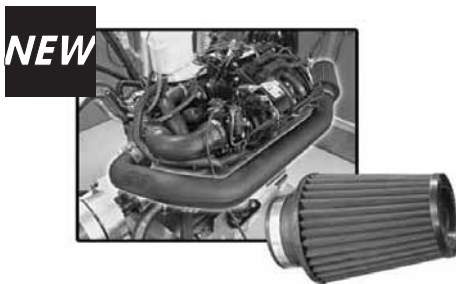
Yamaha Part No. **200-00143**
FX 140/Cruiser
FX HO/Cruiser



VELOCITY STACK KIT

The R&D Velocity Stack Kit is a direct bolt-on kit that replaces the restrictive OEM stacks. Designed to increase air velocity into the throttle bodies producing improved throttle response and top end speed. Easily installs with OEM hardware.

Yamaha Part No. **206-00140**
FX 140/Cruiser
FX HO/Cruiser



**RIVA RXP/RXT/GTX-SC
POWER FILTER KIT**

Provides greatly improved acceleration and a 150-200rpm increase by replacing restrictive stock intake system. Includes pre-filter.

SeaDoo Part No. **RS13050**
RXP/RXT/GTX-SC

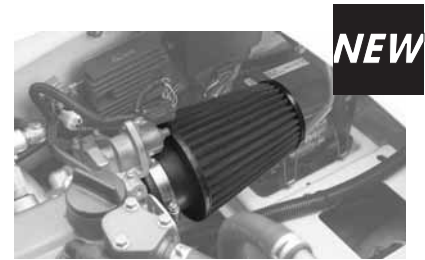
RIVA POWER FILTER KIT



VX110 POWER FILTER KIT

Screen-type filter element replaces restrictive stock air filter. Extended intake tube draws cooler air into engine significantly improving performance. Includes pre-filter.

Yamaha Part No. **RY13027**
VX110



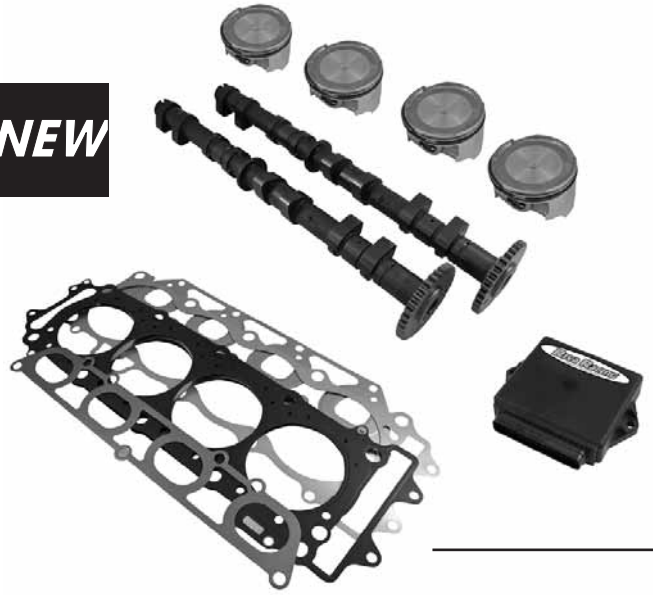
**RIVA STX-15F PERFORMANCE
POWER FILTER KIT**

Improves performance by freeing up suppressive air intake system. Includes pre-filter element.

Kawasaki Part No. **RK13085**
STX-15F



NEW



NEW



NEW



NEW



NEW



Thermostat Kit Components



NEW



racetemp.com

103	217
97	206
91	195
84	184
78	173
72	162
66	151
60	140
54	129
48	118
42	107
C	F







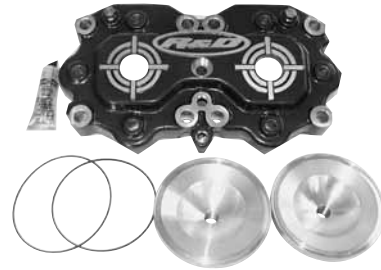
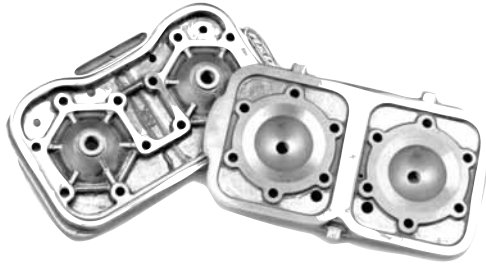






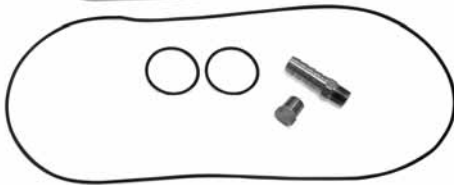


















★																	

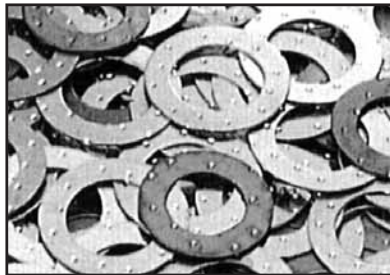


Multiple sets of horizontal lines for writing, separated by larger gaps.

Vertical sidebar with a black header and a series of white rectangular boxes.





















Series of horizontal lines for writing notes.

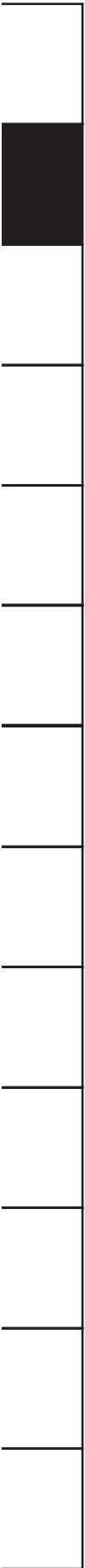
Series of horizontal lines for writing notes.



ThreeBond



Series of horizontal lines for writing notes.



Lined writing area on the left side of the page.



Lined writing area on the right side of the page.



Lined writing area on the right side of the page.

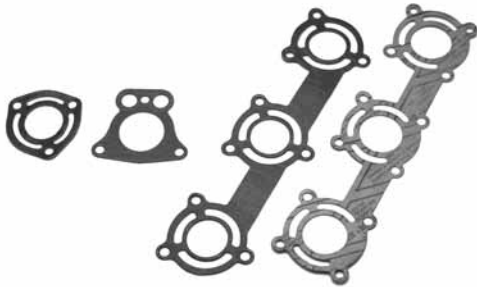


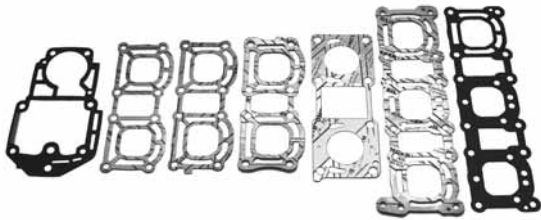
Lined writing area on the right side of the page.



Lined writing area on the right side of the page.











10504 Norwalk Blvd., Santa Fe Springs, CA 90670 www.rd-performance.com

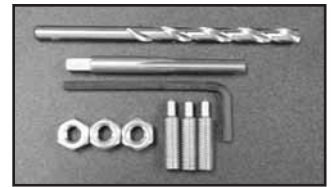
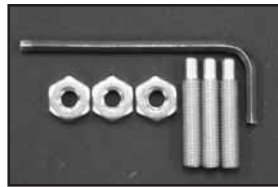
















FACTORY pipe











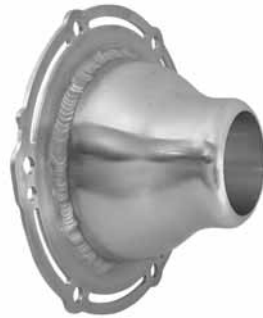
BLOWSION

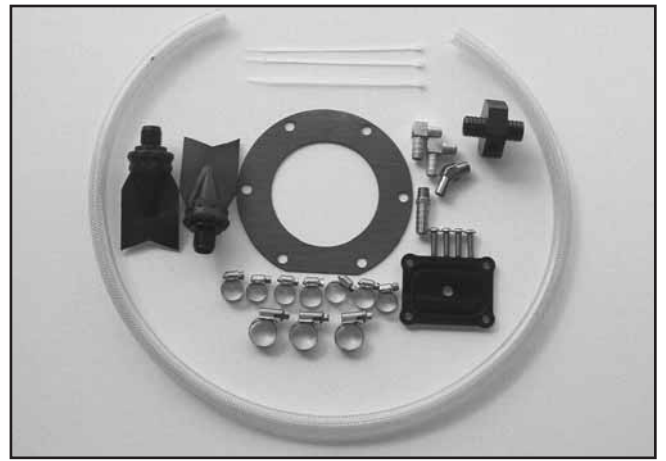




MSD POWERSPORTS



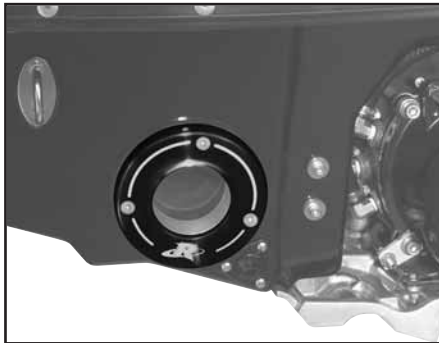












BLWSION

BLWSION

TRM
RACING





Gray header bar

Black header bar

Lined writing area

Black header	Black header	Black header	Black header	Black header
Lined	Lined	Lined	Lined	Lined
Lined	Lined	Lined	Lined	Lined
Lined	Lined	Lined	Lined	Lined
Lined	Lined	Lined	Lined	Lined
Lined	Lined	Lined	Lined	Lined
Lined	Lined	Lined	Lined	Lined
Lined	Lined	Lined	Lined	Lined
Lined	Lined	Lined	Lined	Lined
Lined	Lined	Lined	Lined	Lined
Lined	Lined	Lined	Lined	Lined
Lined	Lined	Lined	Lined	Lined
Lined	Lined	Lined	Lined	Lined
Lined	Lined	Lined	Lined	Lined
Lined	Lined	Lined	Lined	Lined
Lined	Lined	Lined	Lined	Lined
Lined	Lined	Lined	Lined	Lined
Lined	Lined	Lined	Lined	Lined
Lined	Lined	Lined	Lined	Lined
Lined	Lined	Lined	Lined	Lined
Lined	Lined	Lined	Lined	Lined

Gray footer bar

Black footer bar

Lined writing area

Vertical column of rectangular boxes

★NUJET

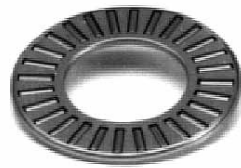


Blank lined area for notes or comments, consisting of multiple horizontal lines.





Blank lines for notes or descriptions.



Blank lines for notes or descriptions.



Blank lines for notes or descriptions.



Blank lines for notes or descriptions.

Blank lines for notes or descriptions.

Blank lines for notes or descriptions.







TBM
R A C I N G



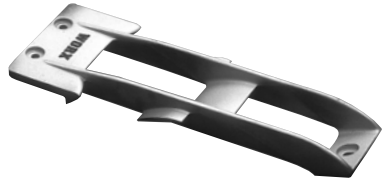






WORX

RACING COMPONENTS

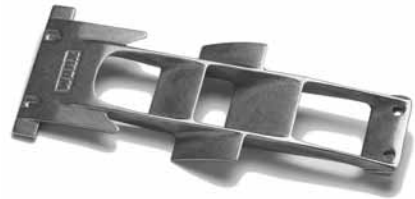












NEW

TBM
RACING





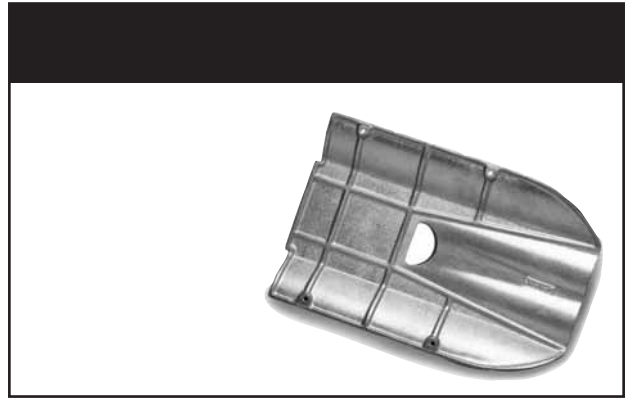
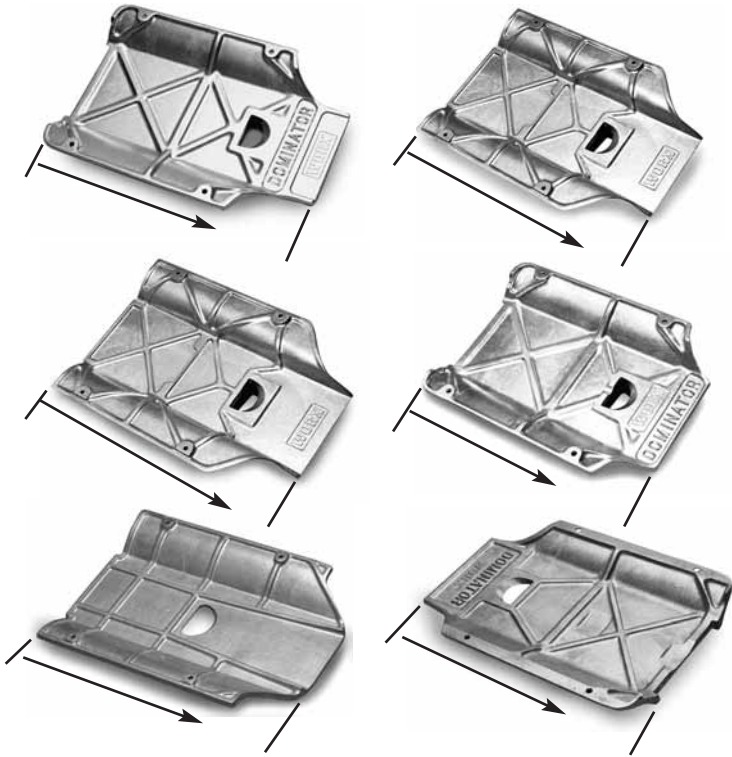
**Jet★
Dynamics**





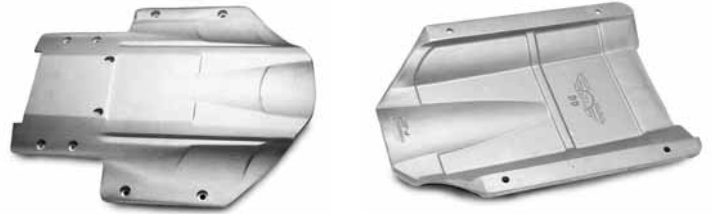




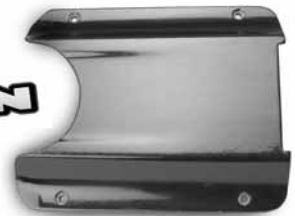


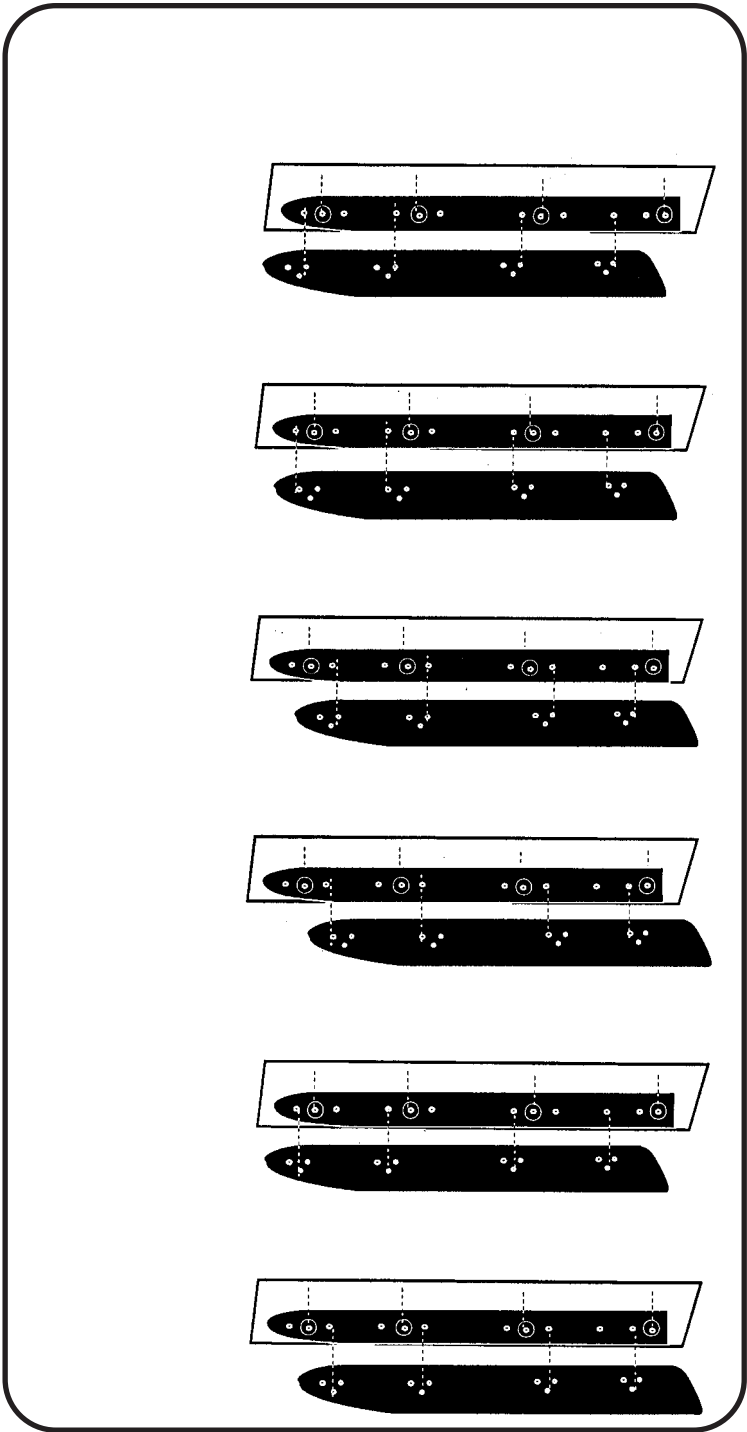
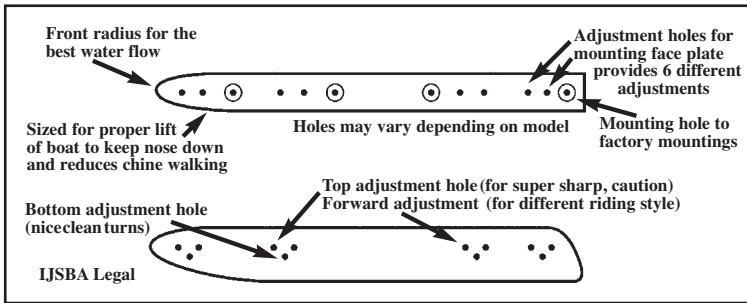
Jet Dynamics

NEW



BLEWSION

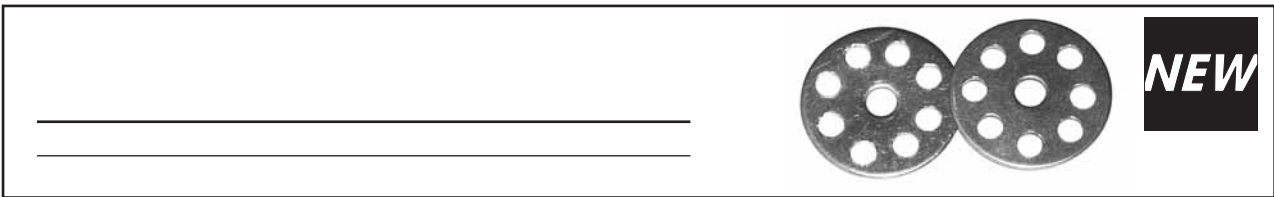
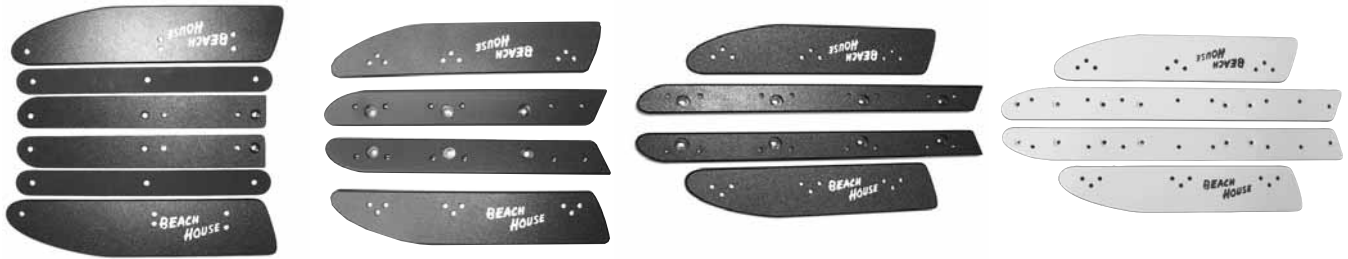






Lined writing area on the left side of the page.

Lined writing area on the right side of the page.



Lined writing area at the bottom left.

Lined writing area at the bottom right.

Vertical column of empty boxes on the far right side of the page.

10504 Norwalk Blvd., Santa Fe Springs, CA 90670 www.rd-performance.com



Four horizontal lines for handwritten notes.

Four horizontal lines for handwritten notes.

Four horizontal lines for handwritten notes.



Two horizontal lines for handwritten notes.

Two horizontal lines for handwritten notes.

Two horizontal lines for handwritten notes.

WORX

RACING COMPONENTS



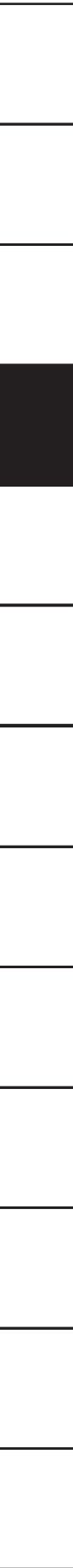
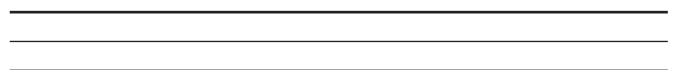
Eight horizontal lines for handwritten notes.

Eight horizontal lines for handwritten notes.

RIVA RACING



BLWSION



MSDTM

POWERSPORTS



42450	43281	4316	42921	31009	43232
42460	43283	4316	42921	31009	43232
42380	4311	4316	42921	31009	43032
42410	43114	43161	42921	31009	43035
42350	43115	43161	42921	31039	43035
42370	43122	4316	42921	31009	43022
42351					



	43281	4316
	43283	43161
	43232	4318
	4311	LAB17344
	43114	LAB19722
	43115	4309
	43122	



42921
4294
00-00-3055

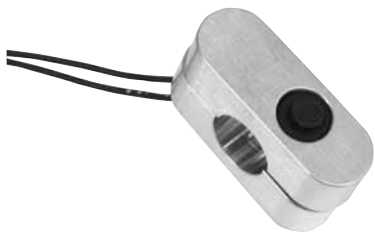


31009
31019
31039
34019
34013



4395
4396
4397

3340
3311

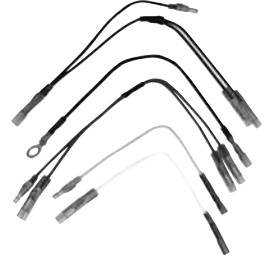


4372

8841

MSDTM

POWERSPORTS



4253

4255
42551



4332



42500
4251

4331

NEW



8170
8171
8172
8173
8185
8180
8181
8183

4259-2
4340



4377

NEW



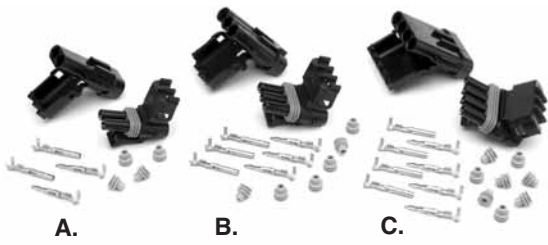
4390

NEW



3505
3508
3506
3507
3509
3510

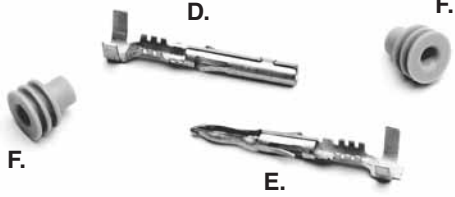
8990



A.

B.

C.



D.

F.

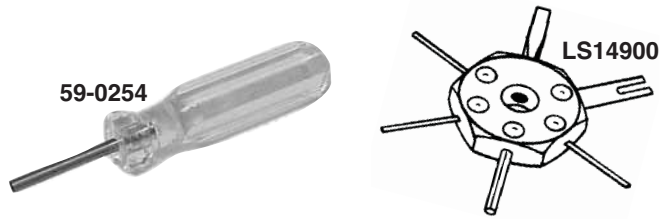
F.

E.



55-2050
55-2051
55-2052

55-2060
55-2061
55-2062
55-2070
55-2071
55-2072



59-0254

LS1490

59-0601

59-0254
LS1490



55-2035
55-2037



55-2040
55-2041
55-2042
55-2043

59-0253

NEW

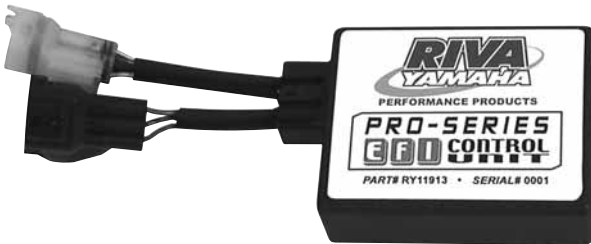


IGNI800SXR



MT-REV-SD89-91
MT-REV-SD92-97
MT-REV-SDRAVE95
MT-REV-SDRAVE96
MT-REV-SD97-98

MT-IGN-REV96-98
MT-IGN-REV99-02



MT-IGN-REV99-02R



RY11913

802-00701



55-2691

55-2544
55-2549

55-2283



DS#57 3 Hole Disc 8mm Bolts DS#26

DS#29 3 Hole Disc 8mm Bolts DS#22

DS#22 3 Hole Disc 8mm Bolts DS#36

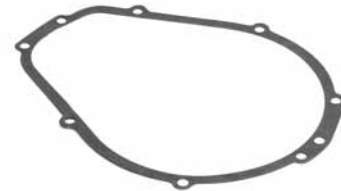
DS#34 Special 18mm x 1.5 Right Hand Bolt
3 Hole Disc 8mm Bolts

DS#37
Universal 12 Hole Disc 8mm Bolts



441-75001
8050

TBM124
TBM111-B
TBM111-C



Flywheel Cover O-Rings

6280
6278
6632
6795

Flywheel Housing Gaskets

6130
6045

2360
3495
4505
3710

008-417
008-418
7790



010-480

010-481

010-480
010-481



290-866-635	004-170
299-866-635	004-170
410-912-000	004-170

6M6-85520-00	004-155
6M6-05S20-00	004-155
62T-85520-00	004-148

59031-3002	004-161
59031-3002	004-161
21003-3707/12/16	004-165

6GO-85580-70	004-154
6GO-85580-70	004-154
6M6-85580-00	004-153
6M6-85580-00	004-153
6M6-85580-00	004-153
6M6-85580-00	004-153

59026-3008	004-163
59026-3008	004-163



21049-3007	004-162
21049-3007	004-162
21003-3719	004-166

290-866-607	004-175
-------------	---------



6K8-85570-010	004-150
6K8-85570-010	004-150
6R8-85570-00	004-157
6R8-85570-00	004-157
6R8-85570-00	004-157
63M-85570-00	004-193

6K8-0103-40	004-152
6K8-0103-40	004-152
6M6-85533-00	004-156
6K8-8103-40	004-156
62T-85533-00	004-147

	004-203
21121-3705	004-157
21121-3708/9/10	004-192

OPPAMA



PET-2100DX



59-0247

59-0245-EGT

59-0245-WTR

59-0247-EGT

400-TC-S3-96-RD

400-CA-HARNESS

PET-2500



59-0550

59-0552

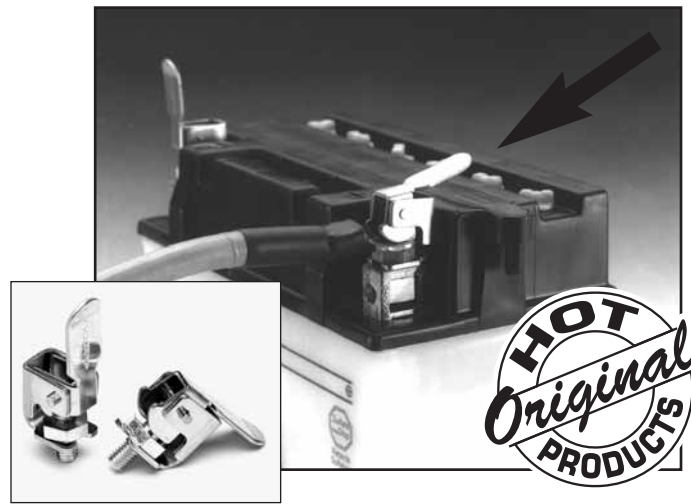
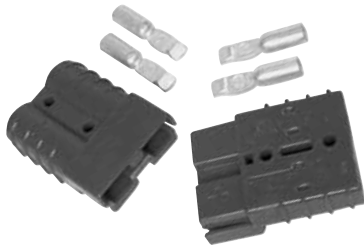
HR-8061



WP16CL-B
WPX20L-BS
WP30CL-B

KB35

WP16CL-B	6 7/8"	4"	6 7/8"
WPX20L-BS	6 7/8"	3 7/16"	6 7/8"
WP30CL-B	6 5/8"	5 3/16"	7 9/16"



4376

59-0527



59-0525

55-2031

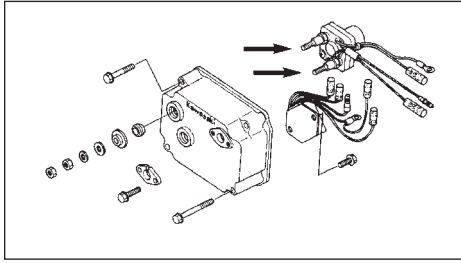
55-3320

55-3326

55-3314



**CORROSION
BLOCK®**



59-0530



CB-20001

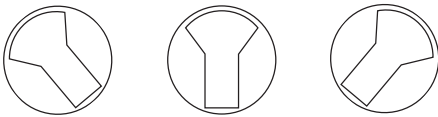
55-3350



57-3011



55-4050



JP7043



57-3020



FEN-JP001

55-2032

B7ES
B7HS
B8ES
B8HS
B9ES



BPR7ES
BR7ES
BR7HS
BPR8ES
BPR9ES
BR8ES
BR8HS
BR9ES
BR9HS



BR8ES-SOLID
BR8HS-SOLID
BR9ES-SOLID
BR8ES-11

CR9EB



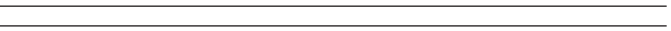
Lined writing area for the left column, consisting of multiple horizontal lines.

Lined writing area for the right column, consisting of multiple horizontal lines.



Lined writing area for the left column, consisting of multiple horizontal lines.

Lined writing area for the right column, consisting of multiple horizontal lines.



Lined writing area for the left column, consisting of multiple horizontal lines.

Lined writing area for the right column, consisting of multiple horizontal lines.

Lined writing area for the left column, consisting of multiple horizontal lines.

Lined writing area for the right column, consisting of multiple horizontal lines.



*PZRF7G-G
DCPR-8E
*ZFR4F-11

TB05EM

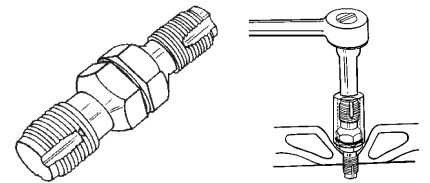
CR9EB
CR9EK

BR8EIX
BR9EIX
BR8HIX

MSD™

POWERSPORTS

See page 95 for
MSD Spark Plug parts
and accessories



LS20200

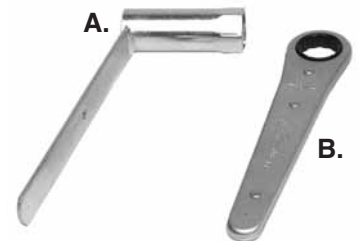
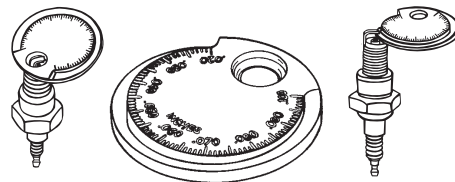


CR6

59-0602



SPH-2
SPH-40



LS26900
LS26970

LS67870

59-0542
59-0539

Atlantis



A7001



A7003



A7004



A7006



A8588



A8589



A8582



A5000



A2520



A2521



A2522



A2628



A6000



A6001

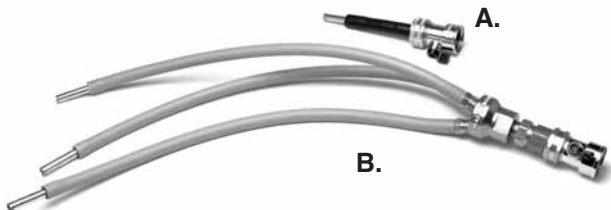


A5200



A2690

BLEWSION



AWAC172

AWAC170



SC-2905



SC-2900



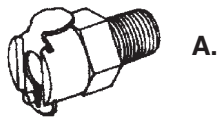
64-0029



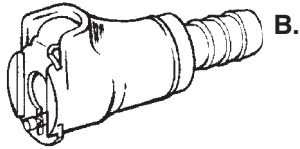
64-0057

64-0058

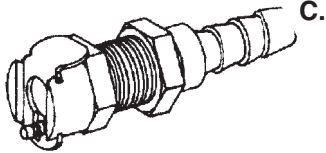
64-0059



A.



B.



C.



64-0001

64-0003

64-0005



64-0012

64-0014



64-0007

64-0009

64-0010

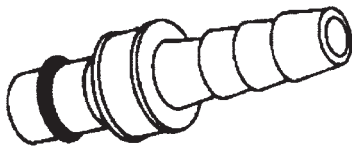


64-0011

64-0013

64-0004

A. 64-0100
B. 64-0103
C. 64-0106



64-0107

64-0109



64-0065

64-0066

64-0067



64-0025

64-0027



64-0117

64-0115



64-0015

64-0017

64-0019

64-0045

64-0046

64-0047



56-8000
56-8003
56-8004



56-8010



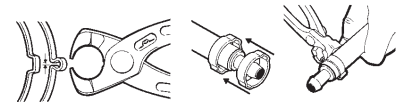
56-9002



56-2010
56-2012
COMFTG0115
JS-02000POL
JS-02000BKA



56-2020
56-2028
56-2030
JS-02001CLR
JS-02001BKA



59-4015
59-4017
59-4018



660-00012

660-00013

64-0030



QD-38
QD-14

52-3118
52-3119
52-3122

RY15-SF38



57-3017



57-3006



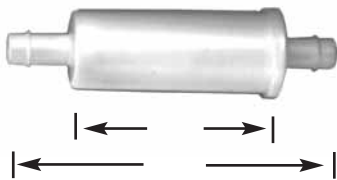
57-3015



57-3003



57-3009



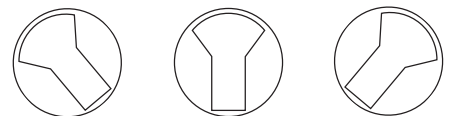
COMFTG036



JP7043

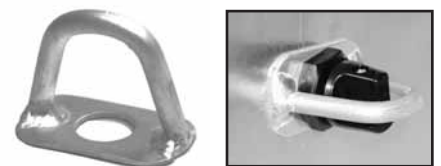


57-3020



56-9005
56-9006
20420020
20420040

56-9010
56-9011
10486
10485



FEN-JP001



25D
20R

27D

25S-6WC



57-4006
57-4007
57-4025

57-4008
57-4009
57-4011

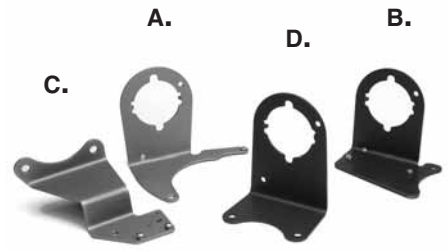
RM500
RM750
RM1100



57-4012
57-4015
57-4018

57-4021
57-4023





660-80000

KASXAL441
YA96AL441

57-3029

57-3023

57-3024

57-3025



55-2050

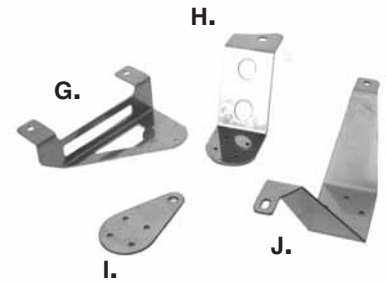
55-2051

55-2052

57-3030

55-2035

55-2037



55-2040

55-2041

55-2042

55-2043

59-0601

WJ7701

SE-044014

SE-044013

SE044011



A.



B.



57-4065

57-4059



C.



D.

E.



A 57-4050

B 57-4060

C. 57-4055

D. 57-4058

Z471

E. A2385

Z472



KASRCO161

AWCO161

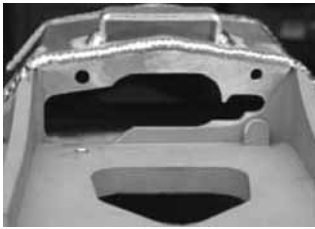
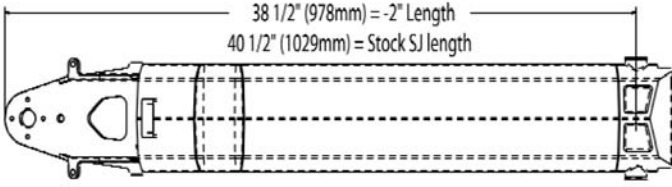
AWCO163

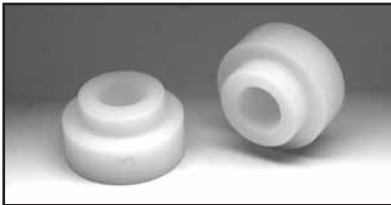
SV-001

57-4070

UMI Racing USA

...For The Uncommon®





BLWSION



UMI Racing USA
...For The Uncommon®



BLWSION



BLWSION



UMI Racing USA
...For The Uncommon®



BLWSION



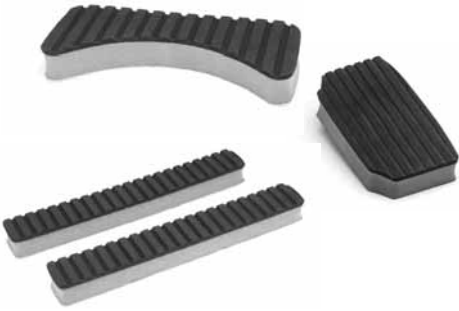
TBM
RACING





BLWSION









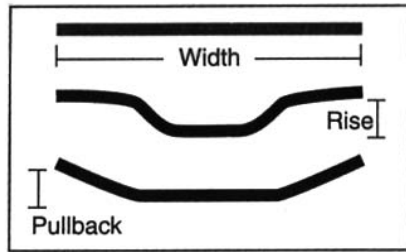


NEW





NEW







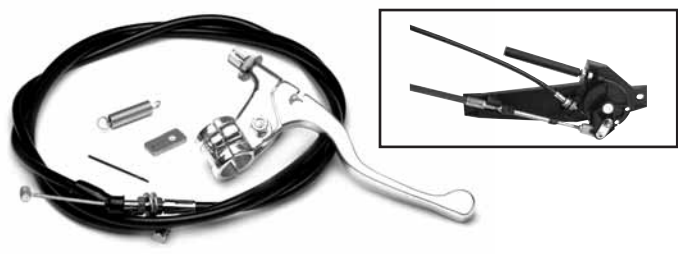












NEW







NEW



NEW

BLWSSION KUSTOM DESIGN



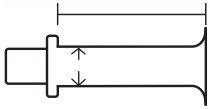
NEW



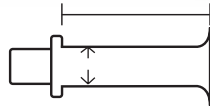
RIVA RACING



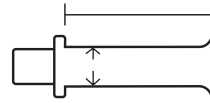
ATI



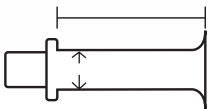
Hard



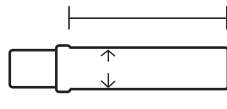
Medium Soft



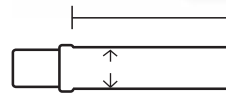
Medium Soft



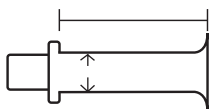
Soft



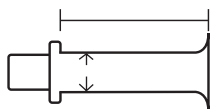
Medium Soft



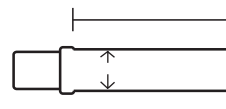
Medium Soft



Soft Slim



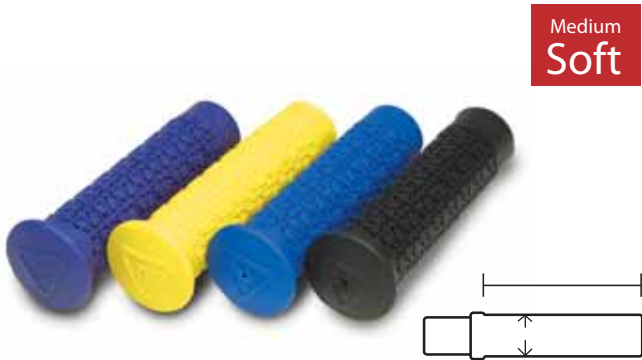
Soft Slim



Soft Slim





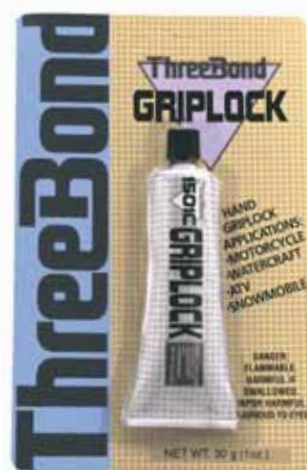




GRIP-IT™



ThreeBond







**LOCK-ON
GRIP SYSTEM**

Easy Installation
No Grip Glue Required

Revolutionary Non-Slip Technology for the Wettest Environments on Earth



NEW



TS55
TS56

KASRC0608

652-70110



001-800

RK5-STXF-MB

RS5-0050



KASRC0840

TBM109

03-04-001



Ultra Grip Material



Sure Grip Material

GP800R/1200R/1300R



Black/White/Silver

GP800R/1200R/1300R



Black/Black/Yellow

GP800R/1200R/1300R



Super Seat

UYAGPR-BK/WT/SL
SYAGPR-BK/WT/SL

UYAGPR-BK/BK/YW
SYAGPR-BK/BK/YW

UYAGPR-SUPER
SYAGPR-SUPER

GP1200



Black/Silver/White

FX140/High Output



Black/White/Silver

VX110



Black/White/Silver

UYAGP-BK/SL/WT
SYAGP-BK/SL/WT

UYAFX-BK/WT/SL
SYAFX-BK/WT/SL

UYAVX110-B/W/S
SYAVX110-B/W/S

RXP



Black/Silver/Black

RXP



Black/Yellow/Silver

4-TEC GTX RXT



Black/Silver/Black

USDRXP-BK/SL/BK
SSDRXP-BK/SL/BK

USDRXP-BK/YW/SL
SSDRXP-BK/YW/SL

USDGTX-BK/SL/BK
SSDGTX-BK/SL/BK

4-TEC GTX RXT



Black/Silver/Rust

USDGTX-BK/SL/RU
SSDGTX-BK/SL/RU

XP/XPL (97-02)



Black/Silver/Yellow

USDXP97-BK/SL/YW
SSDXP97-BK/SL/YW

HX



Black/Silver/Yellow

USDHX-BK/SL/YW
USDHX-BK/SL/YW

STX-R/12F/15F



Black/Blue/Silver/White

UKASTX-B/BU/S/W
SKASTX-B/BU/S/W

STX-R/12F/15F



Black/Red/Black/White

UKASTX-B/R/B/W
SKASTX-B/R/B/W

STX-R/12F/15F



Super Seat

UKASTXR-SUPER
SKASTXR-SUPER

STX-R/12F/15F



Super Seat - Flame Green

UKASTXR-FLAME
SKASTXR-FLAME

STX-R/12F/15F



Super Seat - Flame Blue

UKASTX-FLM-BU
SKASTX-FLM-BU

STX-R/12F/15F



Super Seat - Flame Red

UKASTX-FLM-RD
SKASTX-FLM-RD

ULTRA 150/ULTRA 130 DI



Black/Silver/Blue

UKAULT-BK/SL/BL
SKAULT-BK/SL/BL

ULTRA 150/ULTRA 130 DI



Black/Silver/Red

UKAULT-BK/SL/RD
SKAULT-BK/SL/RD

KAWASAKI RACING TEAM STX-R
SIDE MAT WITH LIFTER REPLICA



KASTXRSM-BLK/BLK



SUPER JET 96+



Black/Black

YASJ96CP

SUPER JET 96+



White/Blue

YASJ96CP-WHT/BLU

SUPER JET 96+



Grey/Black

YASJ96CP-GRY/BLK

SUPER JET 96+



Flame-Blue

YASJ96CP-FLME-BU

SUPER JET 96+



Flame-Red

YASJ96CP-FLME-RD

SUPER JET 96+/KAW 800 SXR*



Flame-Green

YASJ96CP-FLME-GN

SUPER JET 96+



YASJ96Sm

SUPER JET 96+



YASJ96SM-LFT
YASJ96SM-LFT15

SUPER JET 96+



YASJ96BM

750 SX/SXI



Black/Black

KA750SXCP

750 SX/750



Green/White

KA750SXCP-GRN/WHT

800 SXR



Black/Black

KA800SXRCP

800 SXR



Green/White

800 SXR



Flame-Red

800 SXR



Flame-Green

KA800SXRCP-SUPER

KA800SXRCP-FL-RD

KA800SXRCP-FL-GN

750 SX/SXI



750 SX/SXI



800 SXR



KA750SXSM

KA750SXSM-LFT

KA750SXSM-LFT15

KA750SXBM

KA800SXSM

KA800SXSM-LFT

KA800SXSM-LFT15

KA800SXRBM

800 SXR



New Design Rail Cap

800 SXR



Side Mat for New Rail Cap

800 SXR



Kick Tail

KA800SXRRCNM

KA800SXRSMRC

KA800KICK

SEA DOO RXP



Black/Black

SEA DOO GTX DI (02-03),
4-TEC (02-05), RXT



Black/Black

YAMAHA GP 800R/
1200R/1300R



Black/Black

KAWASAKI ULTRA 150,
1200 STX-R, 15F



Black/Black

SDRXPMT-BLK/BLK

SDGTXMT-BLK/BLK

YAGPRMT-BLK/BLK

KAULTMT-BLK/BLK

KASTXR-BLK/BLK



- ◆ Grooved for maximum traction
- ◆ Durable, thick, high-density foam
- ◆ Fade-resistant colors



_____	BLK	_____	LGN
_____	BW	_____	PUR
_____	CAM	_____	ROY
_____	DB	_____	TEL
_____	DG	_____	TRI
_____	LBL	_____	WHT
_____	DP	_____	LGY
_____	TAN	_____	DGY
_____	GRA	_____	PM
_____	RM	_____	PK



_____	HT824	BLK
_____	HT80	BLK, PUR
_____	HT82	BLK, PUR
_____	HT821	BLK, BW
_____	HT823	BLK
_____	HT83	BLK, PUR
_____	HT831	BLK, BW
_____	HT84	BLK, TRI
_____	HT85	BLK, GRA
_____	HT86	BLK
_____	HT87	BLK, PUR
_____	HT88	BLK
_____	HT89	BLK
_____	HT3D	BLK
_____	HT20	BLK, PUR, ROY
_____	HT40	BLK, PUR, ROY
_____	HT55	BLK, ROY
_____	HT60	BLK, PUR
_____	HT61	BLK
_____	HT63	BLK, PUR, ROY
_____	HT631	BLK, PUR
_____	HT64	BLK
_____	HT65	BLK, PUR, ROY
_____	HT66	BLK
_____	HT67	BLK, PUR, ROY
_____	HT68	BLK, PUR, ROY
_____	HT68K	BLK
_____	HT68R	BLK
_____	HT05	BLK
_____	HT06	BLK

_____	HT70	BLK
_____	HT71	BLK, PUR
_____	HT72	BLK, GRA
_____	HT73	BLK, PUR
_____	HT74	BLK, BW
_____	HT741	BLK
_____	HT742	BLK
_____	HT75	BLK, PUR
_____	HT751	BLK, PUR
_____	HT76	BLK, ROY
_____	HT77	BLK
_____	HT78	BLK, DG
_____	HT784	BLK, DP
_____	HT79	BLK, BW
_____	HT791	BLK, GRY, TRI
_____	HTFX	BLK
_____	HTVX	BLK
_____	HT90	BLK, PUR, ROY
_____	HT91	BLK, BW
_____	HT92	BLK
_____	HT921	BLK
_____	HT93	BLK
_____	HT94	BLK
_____	HT95	BLK
_____	HT96	BLK
_____	SHT40MG	BLK
_____	SHT40MD	BLK



	HTMF
	HT751F
	MT751F-BUMPER
	HTJLF
	HT67F

	Y01
	Y02
	Y021
	Y03
	Y04
	SD01
	SD02
	SD04
	SD05
	SD06
	SD07
	SD08
	SD09
	SD11
	SD12
	SD13
	SD14
	SD15
	SD16
	SD17

2" x 15" 8pcs



4" x 15" 4pcs



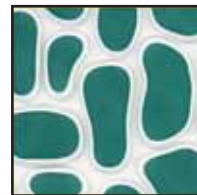
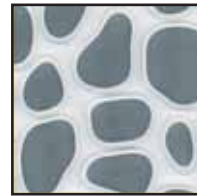
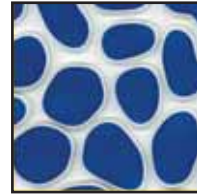
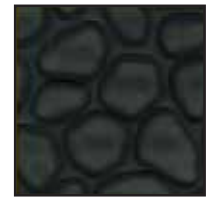
	TS02
	TS04



	70-4050
	70-4055

	KICK01
	HT68K-BLK
	HT68R-BLK

GATOR GRIP

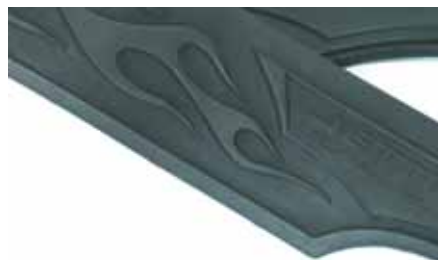


	GS001
	GS007
	GS011
	GY021
	GY023
	GK023
	GK031
	GK029
	GK030
	GP031
	GB020



CC30
1521A150GM

57-7037



Small
Large
Large

57-7029
57-7030
57-7032

57-7035

AQUA *Performance*



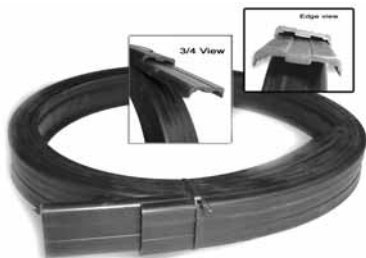
1096SPD-BLK
 1096GXP-BLK
 1097GTX-BLK
 1077GD-BLK
 1098GTS-BLK
 1097GTX-BLK
 1077GD-BLK
 1097GTX-BLK
 1098GTS-BLK
 2004RXP-BLK

1070XL-BLK
 1070XL-BLK
 1070XL-BLK
 1072XL-BLK
 1070XL-BLK
 1072XL-BLK

2002ATX-BLK

1090KZD-BLK
 1097KTX-BLK
 1097KTX-BLK

1096SLTX-BLK
 1096SLTX-BLK
 1096SLTX-BLK
 1096SLTX-BLK
 1096SLTX-BLK
 1075PDT-BLK
 1075PDT-BLK
 1075PDT-BLK



JSU-800-BUMPER

TBM117
 TBM117-STXR

RK5-RMK-080
 RK5-RMK-085



YA20110-CLR
YA20110-BKA

KA20220-CLR
KA20220-BKA



RY842P
RY842B
RY840-1P
RY840-1B



50-9530
50-9531



KASRAC175CL
KASRAC175GN
KASRAC175RD
KASRAC175BK



04-03-100
04-03-103
04-03-101
04-03-102



TBM105-C
TBM105-B
TBM105-G



Inside View

CC-KAW1



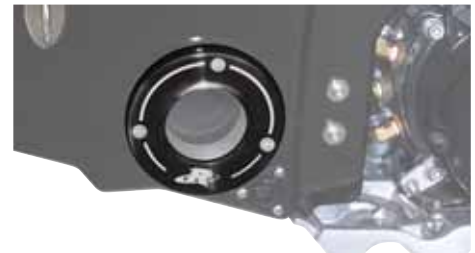
SE-019101 SE-019111
SE-019109 SE-019119
SE-019104
SE-019103 SE-019113
SE-019102 SE-019112



SE-019201
SE-019209
SE-019204
SE-019203
SE-019202



TBM110-P	KAALWK537CL	YAAMAL350CL
TBM110	KAALWK537GN	YAAMAL350BL
	KAALWK537RD	YAAMAL350RD
	KAALWK537BK	YAAMAL350BK



TBM109	YAAMAL501CL	RK16086
	YAAMAL501GN	
	YAAMAL501RD	



Yamaha
57-6280



Kawasaki
57-6270



	QL-01	57-6280
	QL-02	57-6270



123ABC BLBKG200	123ABC BLKKI200	123ABC BRBKG200	123ABC CHBKG200
123ABC REBKG200	123ABC PUTEG200	123ABC REPUG200	123ABC RUBKG200
123ABC SFBKG200	123ABC SIBKG200	123ABC TEBKG200	123ABC WHBKG200
123ABC YEBKG200	123ABC YEPUG200	123ABC YEREG200	

ABC123 BRBKG300	ABC123 BLBKG300	ABC123 CHBKG300	ABC123 PUBKG300
ABC123 PUTEG300	ABC123 REBKG300	ABC123 REPUG300	ABC123 RUBKG300
ABC123 SIBKG300	ABC123 TEBKG300	ABC123 WHBKG300	ABC123 YEBKG300
ABC123 YEPUG300	ABC123 YEREG300		

ABC123 BLBLK320	ABC123 BLKSI320	ABC123 BRBLK320	ABC123 GOSPK320
ABC123 ROBLK320	ABC123 RBGLD320	ABC123 REBLK320	ABC123 SFBLK320
ABC123 SIBLK320	ABC123 SISPK320	ABC123 TEBLK320	ABC123 TECOP320

ABC123

BLK350EC

ABC123

BLU350EC

ABC123

GRN350EC

ABC123

WHI350EC

ABC123

RED350EC

123ABC

BLK200EC

123ABC

PUR200EC

123ABC

TEA200EC

123ABC

WHI200EC



Custom Lettering Kit

964
965

2400W
2410B
2420C

7248	7249	
8248	8249	8251
9248	9249	9251

STIFFLE

GE5Z1

GE5Z1

GE5Z1

**0123
4 5 6
7 8 9**

GE5Z1

GE5Z1

GE5Z1

GE5Z1

GE5Z1

GE5Z1

GE5Z1

GE5Z1

H1310	H1315
H1311	H1316
H1312	H1317
H1313	H1318
H1314	H1319



Fabric: Glen-Tuf



	XW823BL
	XW834BL
	XW835BL
	XW836BL
	XW840BL
	XW846BL
	XW854BL
	XW855BL
	XW859BL
	XW860BL
	XW868BL



	XW821BL
	XW831BL
	XW843BL

	XW837BL
	XW847BL
	XW849BL
	XW852BL



	XW853BL
	XW862BL
	XW867BL

	XW805BL
	XW806BL
	XW818BL
	XW842BL
	XW850BL
	XW856BL

	XW865BL
	XW869BL



























Atlantis



BLU EYE
e y e w e a r

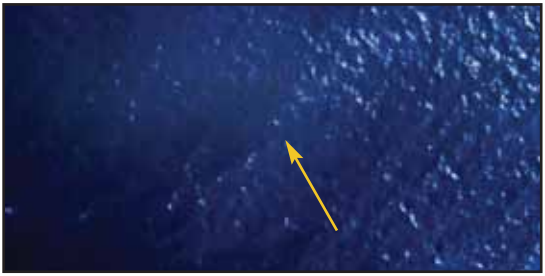


FACTORY ZERO





- ◆
- ◆
- ◆
- ◆
- ◆
- ◆
- ◆



Atlantis®











Atlantis®





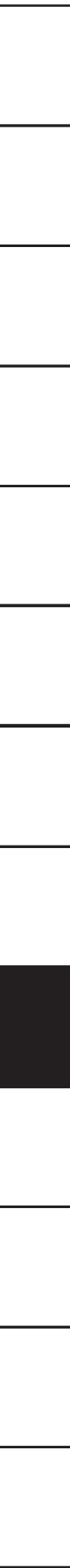












AIRHEAD®







HALF-PIPE





CHARIOT

TOWABLE SERIES

SUMO TUBE



MABLE SERIES





MEGA BOWL



WEGO KITE TUBE





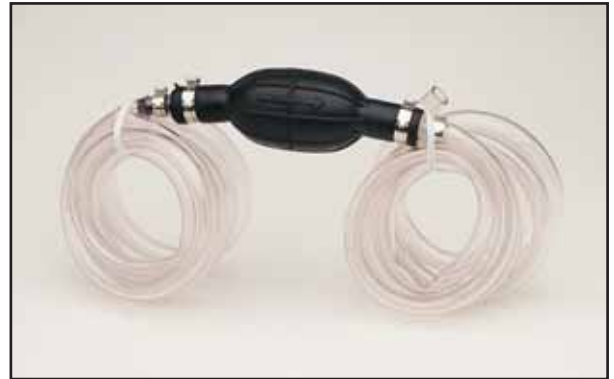






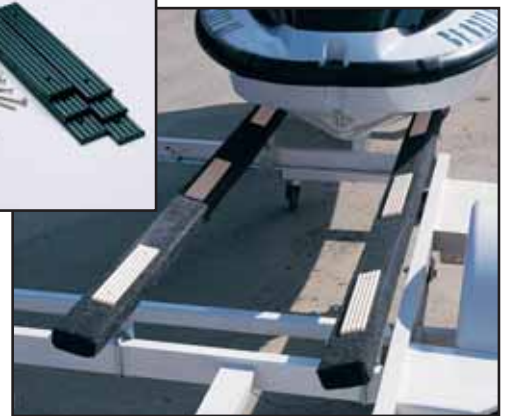






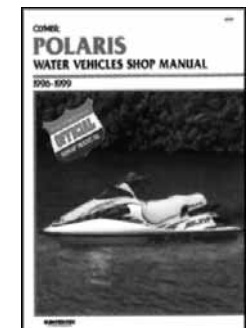
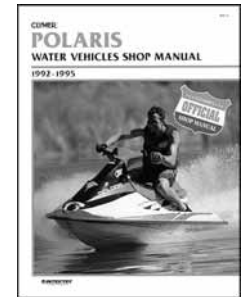
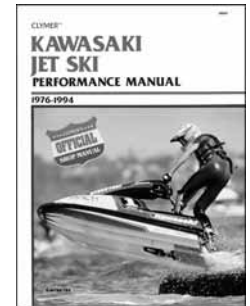
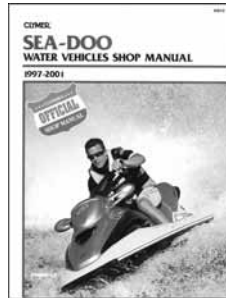
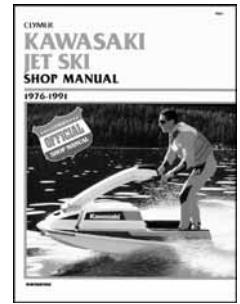
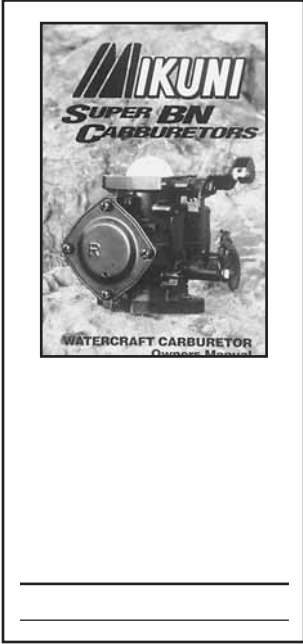








CLYMER®







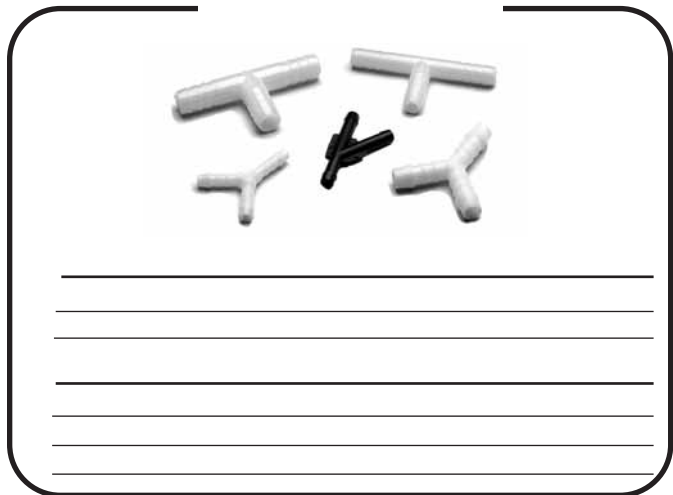
























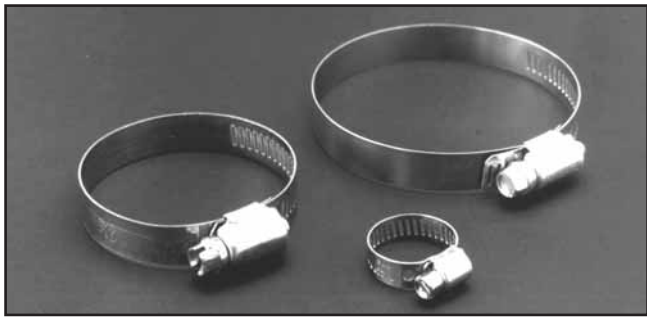




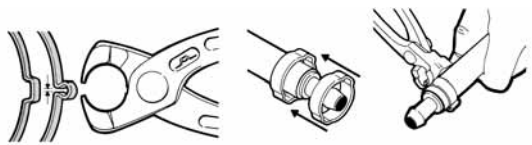




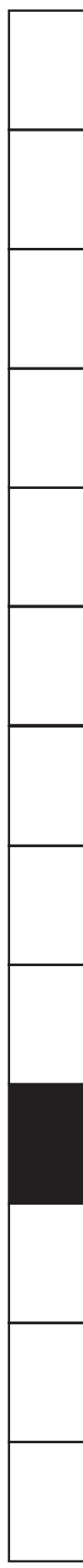
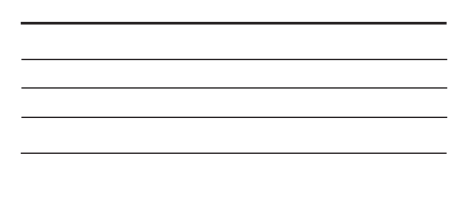
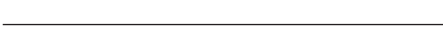
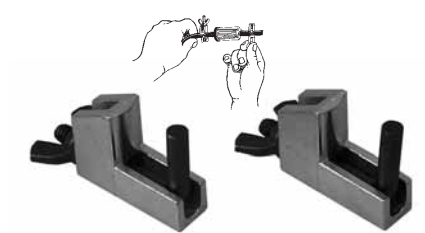
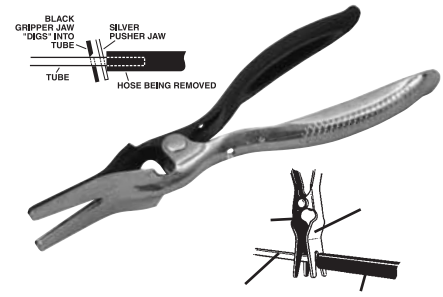
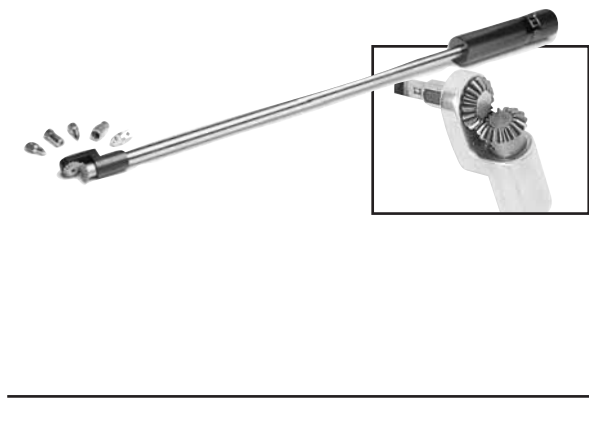
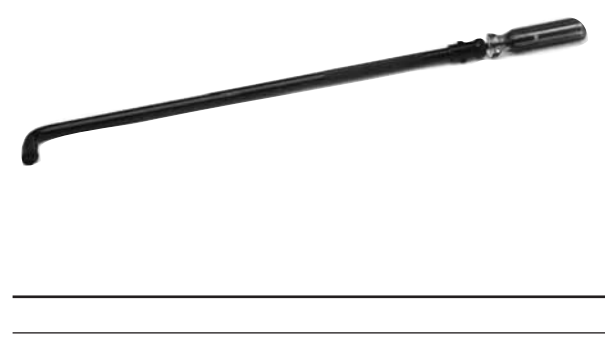


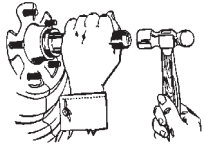
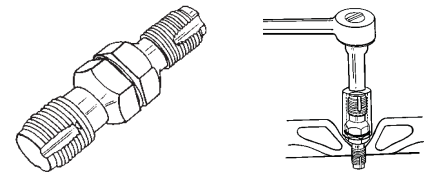
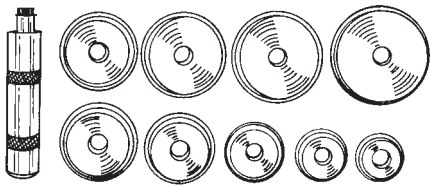


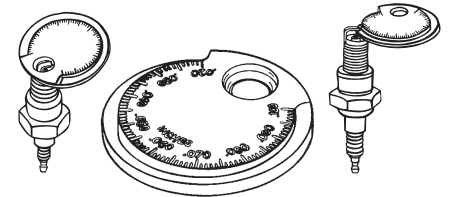


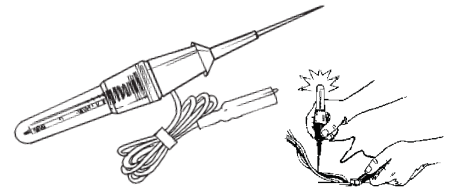


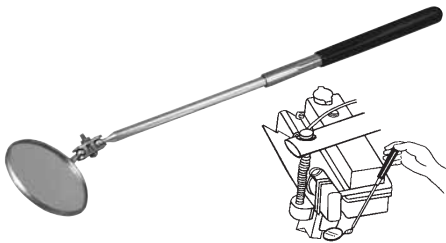


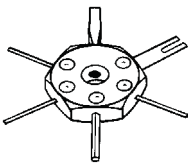










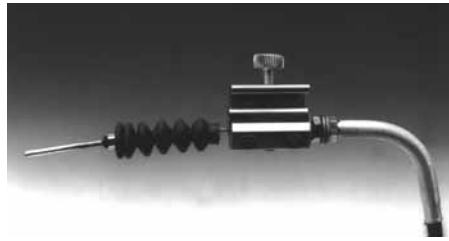






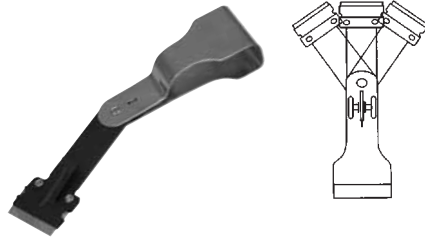






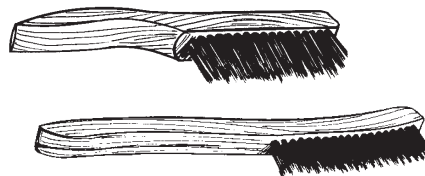






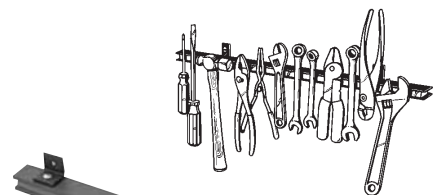




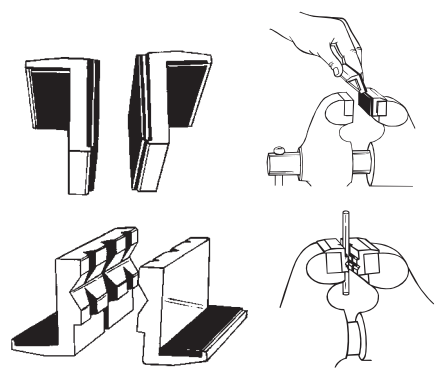














SALT TERMINATOR™









ThreeBond



CORROSION BLOCK®



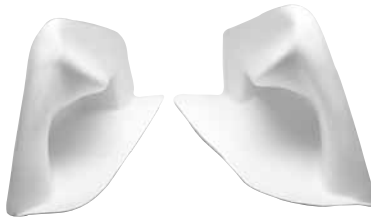
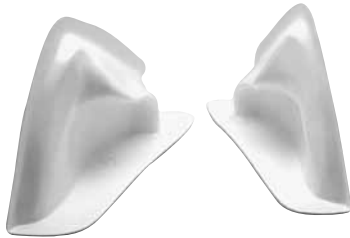
BLWSTION



YAAMAL191

YAAMAL501CL
YAAMAL501GN
YAAMAL501RD

YA96C0122BLKGRN
YA96C0122BLKBLK



AWC0126

AWC0125SXR

AWAC125BLK





YASJC0699



AWC0212
AWC0213



YASJAC146



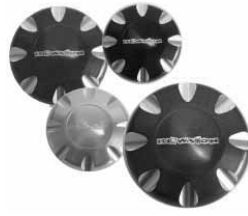
AWAC172
AWAC170



YASJAC145



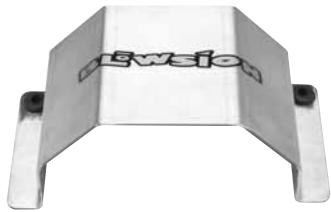
AWACC149
AWACC150



YAAMAL350CL
 YAAMAL350BL
 YAAMAL350RD
 YAAMAL350BK

04-03-100
 04-03-103
 04-03-101
 04-03-102

KASXAL143
 YAAMAL140



YAAMAL332

KASXAL441
 YA96AL441



KASRC0161
 AWCO161
 AWCO163



77-0001

SF-001
 DF-001

SV-001



CP-001
CP-001-DIA



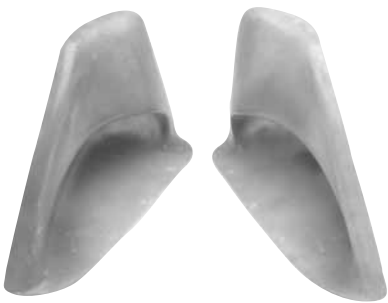
SR71B-001



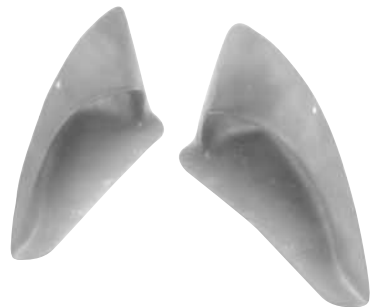
BHH-001



HL-001



BS-001



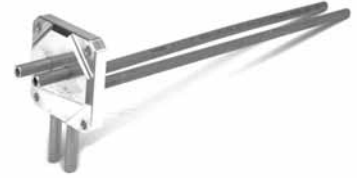
UBS-002



231-75146



231-75144
231-75144-MT



KASXAL144

231-75148

12-0010

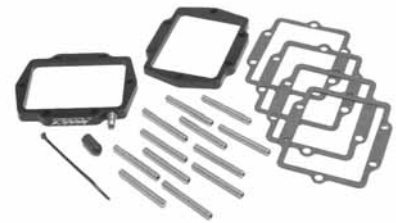


KASXAL143



2P127-1

251-75010
251-80000
7050
62-3050



271-75001
271-75000

JSU 800-RSK



200-00800

200-00120



TBM106



53-4465



411-75024
411-75025
411-75026
411-75027
080-75000
411-80028
411-80029
080-80000
411-75000

TBM107-G
TBM107
TBM107-O
TBM019
TBM022
TBM024
TBM026
TBM027



TBM022-L
TBM024-L
TBM026-L
TBM027-L
7040F

Piston Kit	Bore Size mm	Over Size mm	CC	Ring Set



KA800M
KA800G
KA8022
KA8024
KA8026
KA8028
KA8030
KA8032
KA800BRK-CARB
ORKIT750

7300
SXR
11004-3720
11060-3711
11060-3717
11060-3757
11060-3761
11060-3759
11060-3712
11060-3713
11060-3714
7310
7000
7040
7050
7430
7067
7075
7080
7090
7140



20,000th Metal	B0075020C
0.030 - 0.75mm*	7040C
0.040 - 1.00mm*	7040D
0.050 - 1.25mm*	7040E
0.060 - 1.50mm*	7040F



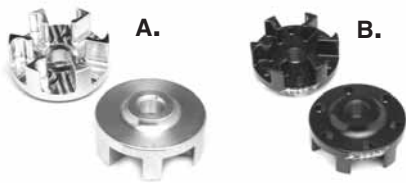
TBM110
TBM110P

KAALWK537CL
KAALWK537GN
KAALWK537RD
KAALWK537BK

331-80000



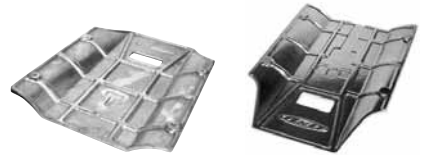
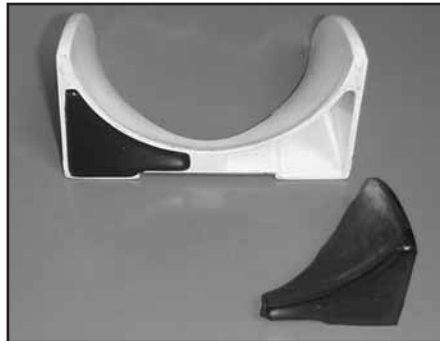
FSKW3



A. KA800DCS

54-8000

B. TBM103



121-80000
121-80001

TBM120

161-80000



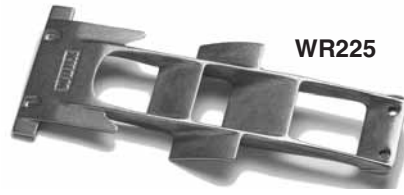
MR-SXR-002

WR310
WR311

TBM123
TBM123-S



111-80001



WR225

WR222
WR225



TBM100



SE-013014

SE-013013-Cable
SE-013013-size



SKC75SW1318
SKC75SW1419
SKC75SW1520



KP-DF-13/22
KP-DF-14/23
KP-DF-15/24



TBM-101



121-00800



AWC0212

AWC0213



KASRC0840



TBM109



03-04-001



KASRCO0608



KASRAC175CL
KASRAC175GN
KASRAC175RD
KASRAC175BK



TBM105-C
TBM105-B
TBM105-G



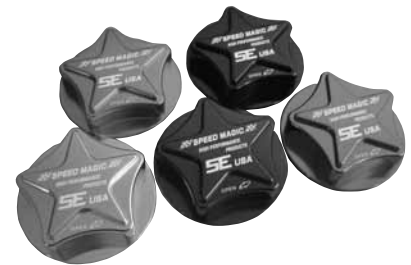
Inside View



CC-KAW1



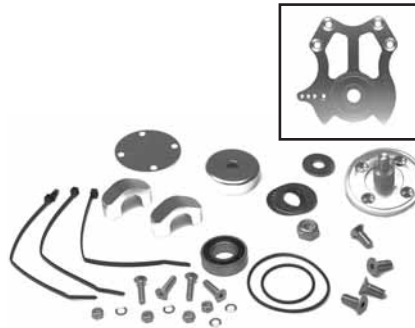
SE-019101 SE-019111
SE-019109 SE-019119
SE-019104
SE-019103 SE-019113
SE-019102 SE-019112



SE-019201
SE-019209
SE-019204
SE-019203
SE-019202



YA-09100



UMI Racing USA
...For The Uncommon®



BLWSION



KAALWK542CL
KAALWK542GN
KAALWK542RD



JS-04103
JS-04105-CLR

YA-09010-BLK
YA-09011-CLR
YA-09012-BLK
YA-09013-CLR

JS-09200



IGNI800SXR



BR8ES
BR8ES-SOLID
BR8EIX



800SXR



BR-KAW-1H
BR-KAW-2H



SSP-1005
SSP-1006

HD-KAW



KA800AC



521-80000



JSU-800STB



TBM104-S
TBM104-T



YA-01105POL
YA-01105BKA
YA-01106POL
YA-01106BKA



58-5130
58-5132
58-5135

800 SXR



Green/White

800 SXR



Flame-Red

800 SXR



Flame-Green

KA800SXRCP-SUPER

KA800SXRCP-FL-RD

KA800SXRCP-FL-GN

800 SXR



New Design Rail Cap

800 SXR



Side Mat for New Rail Cap

800 SXR



Kick Tail

KA800SXRRCNW

KA800SXRSMRC

KA800KICK



HT68K



KA800SXSM
KA800SXSM-LFT
KA800SXSM-LFT15
KA800SXRBM

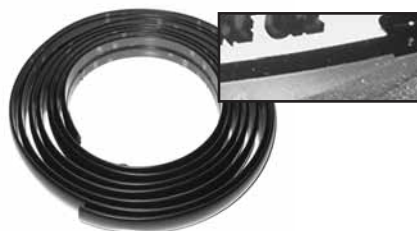
XW865BL

KICK01
HT68K-BLK
HT68R-BLK

HT68-BLK



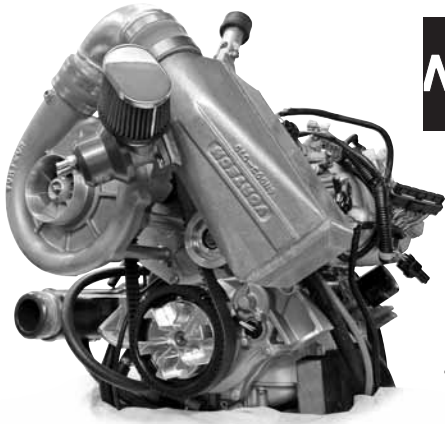
JSU-800-BUMPER



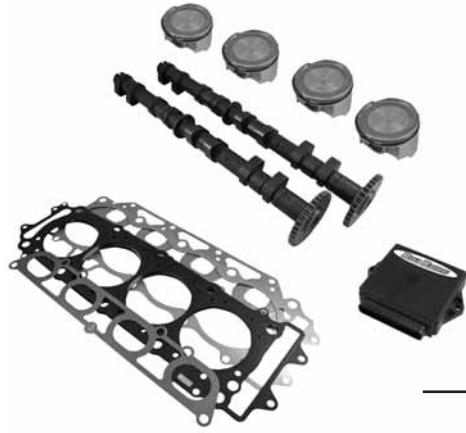
TBM117



RK5-RMK-080



NEW



RK1785
RK13086

RK1000-15F



215-15010

RK13085

215-15000

STX-R/12F/15F

STX-R/12F/15F



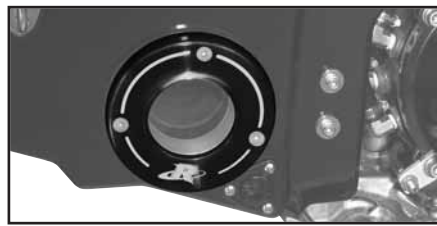
UKASTX-B/BU/S/W
SKASTX-B/BU/S/W
UKASTX-B/R/B/W
SKASTX-B/R/B/W
UKASTX06-B/S/G
SKASTX06-B/S/G
UKASTX06-B/S/W
SKASTX06-B/S/W

UKASTXR-FLAME
SKASTXR-FLAME
UKASTX-FLM-RD
SKASTX-FLM-RD
UKASTX-FLM-BU
SKASTX-FLM-BU

XW869BL



RK16085



RK16086



CR9EK

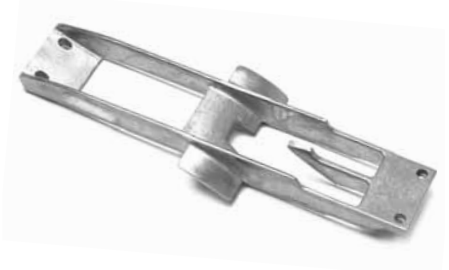


121-15100

121-15011



111-15001



WR219



RK5-STXF-MB



RK5-STXF-MB
RK5-RMK-085



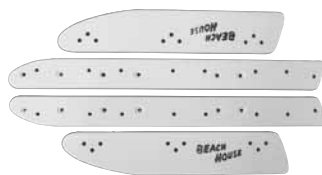
RK26085



121-21500



WR527



BH305-W



SK1100SW1319
SK1100SW1319R
SK1100SW1420



KG-CD-12/18
KG-CD-13/19
KG-CD-14/20



200-00144



200-00143



206-00140



VX110 Pwr Filter RY13027



122-14000
122-16000



112-14000



WR224



RY22325



162-00002



162-12002



162-12000



122-00140



RY2625



WR529



CR9EB



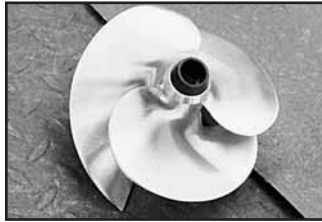
UYAFX-BK/WT/SL
SYAFX-BK/WT/SL



UYAWX110-B/W/S
SYAWX110-B/W/S



RY1625



SY55XLSW1319R



YF-CD-12/18



SY55XLSW1420R

YF-CD-13/19FX

SY55XLMSW1324

YF-CD-14/20

SY55KYSW1624

YG-CD-18/24

SY55KYSW1523



HTFX
HTVX

XW862BL
XW867BL



OIL01



17860-0012

Kit Part # RS-RPM-RXP-1

1	RS13050
1	RS23050
1	RS22050
1	SRX-CD-14/19R



RS13050

203-00215

Kit Part # RS-RPM-RXP-2

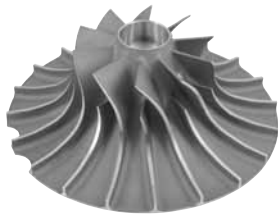
1	RS13050
1	RS1750-001A
1	RS1750-PC
1	RS15050
1	RS22050
1	SRX-CD-15/20R
1	RS23050
1	RS26050
1	RS29050-1



EBS-4011



203-95003



RS1750-001A



RS1750-PC



RS15050



RS1750-BV



203-00216



RS29950



RS29055

Kit Part # RS-RPM-RXT-1

1	RS13050
1	RS23050
1	RS22050
1	SRX-CD-14/17R
1	RS29055



RS1015



RS22050

RS22055

RS22050

RS22055

Kit Part # RS-RPM-RXT-2

1	RS13050
1	RS1750-001A
1	RS1750-PC
1	RS15050
1	RS22050
1	SRX-CD-13/19R
1	RS23050
1	RS26050
1	RS29050-1



113-95000

113-95001

113-95002



WR221

WR221



WR223

WR223



163-21502

163-95003

163-21500



RS23050



143-95002

143-95003



163-95200

163-95200

163-95350



* SS598328SW1021

* SS558323SW1621

* SS558323SW1520

* SS598328SW1021

SS5959832831318

SS5959832831419

SRX-CD-1419

SRX-CD-1417

SR-CD-1220

SR-CD-1220

DS#70

DS#71

RS29050-1



RS2455
RS2455-1

FB-001-SD

58-6321
58-5121

SD-01600-CLR



RS5-0050

RS26050

WR526
WR534

123-95100

123-95101



123-95000

RS-9055

WP30CL-B

USDRXP-BK/SL/BK
SSDRXP-BK/SL/BK
USDRXP-BK/YW/SL
SSDRXP-BK/YW/SL
USDGTX-BK/SL/BK
SSDGTX-BK/SL/BK

XW860BL

XW868BL



DCPR-8E

HT88

HT89

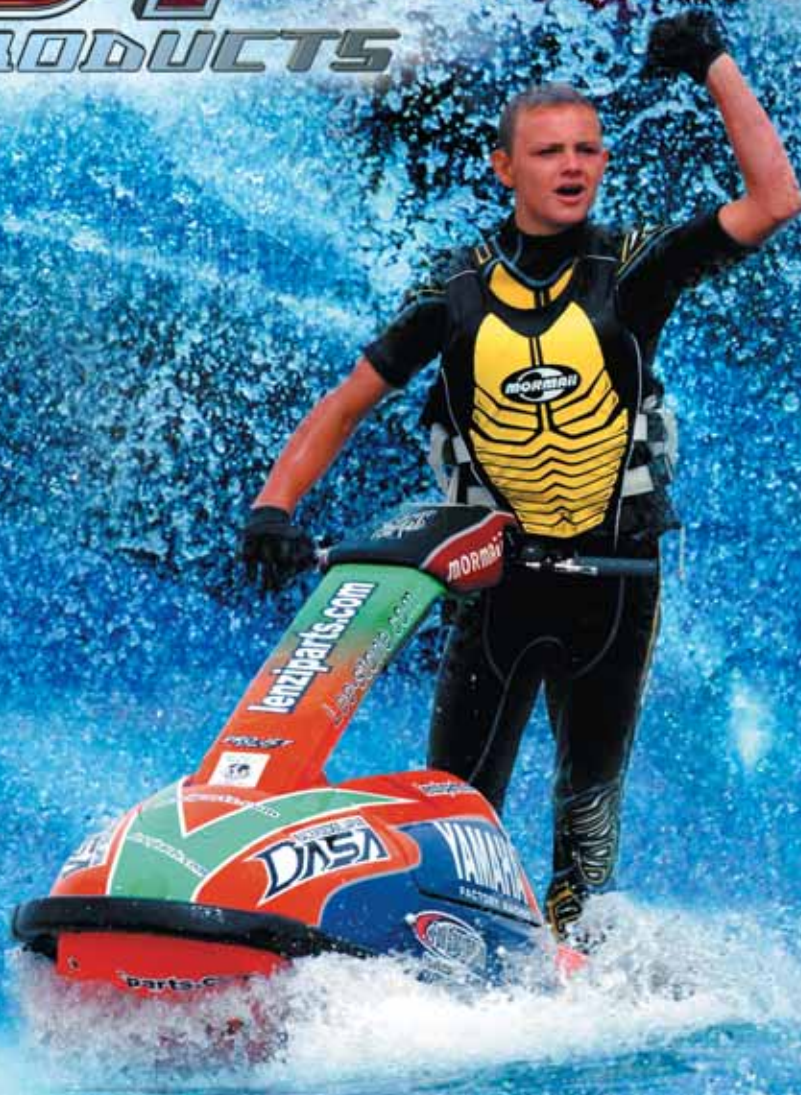
LS26750



Thorus 305 www.lenziparts.com

HOT

PRODUCTS



SALES: 858-566-4454

FAH: 858-566-3625

A DIVISION OF
Exceed
INTERNATIONAL, INC.

8949 KENAMAR DRIVE
BUILDING 111 SAN DIEGO
CALIFORNIA 92121

hot products high performance racing

