

Datasheet

# HP Remote Graphics Software



Remote access to workstation performance



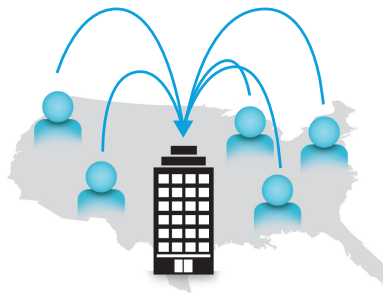
Feel the freedom of working remotely while still accessing the high-performance 3D or media-rich applications you count on. With HP Remote Graphics Software (RGS), you can take your graphics-intensive workstation applications wherever you go. From the remote worker to the road warrior, get complete access to the power of your workstations from any computer in any location. Collaborate with colleagues around the office or around the world! HP provides remote access to workstation performance with HP RGS standard with every HP workstation.

## Work without boundaries



### Real-time collaboration

Share your workstation screen with multiple users simultaneously – grant view only or full interactive access.



### Remote workers

Consolidate Workstation resources and allow your professionals to connect in from any computer at any location.<sup>1</sup>



### Workstation-class mobility

Get complete remote access to the full power of your workstation and your professional workstation-class applications when off-site.<sup>2</sup>

## Benefits from Unlimited Remote Access

---

### High quality image

High performance compression enables real-time visualization for graphic-heavy applications.

---

### New in 6.0! Advanced video compression

Expand the reach of remote workstation access with the massive reduction in required bandwidth for RGS connections.

---

### New in 6.0! HP Velocity

Improved WAN performance with adaptive network analysis, packet loss protection, congestion detection and wi-fi acceleration.

---

### Windows and Linux

Enjoy cross-platform access with support for both of these desktop environments.

---

### Open GL and Direct X

HP RGS offers full 3D graphics API support for workstation-class performance.

---

### Application independent

RGS sends pixels not data. So regardless of what application you're using, RGS just works.

---

### Many to one

Access one or many workstations with Directory Mode using a single sign-on.

---

### Multiple displays with resolution and layout matching

HP RGS auto-sets resolution and multi-display settings to match the receiver's system.<sup>3</sup>

---

### Remote USB

Virtually attach a USB device to a remote system with local control and access.<sup>4</sup>

---

### No extra hardware

This software-only solution allows deployment without additional infrastructure costs. And its FREE on HP Personal Workstations.

<sup>1</sup> Internet access required.

<sup>2</sup> Performance dependant on network latency and image frame content.

<sup>3</sup> Match display layout not supported on Linux. Resolution matching on Linux may require additional X-server setup.

<sup>4</sup> Not all USB devices supported. Remote USB not supported on Linux Sender. See user guide for list of supported USB devices.

## Tech specs

---

### Supported operating systems

- Windows XP SP3, 32-bit, x64
  - Windows 7 Professional
  - Windows 8 Professional
  - RHEL v5.2-v6.3
  - SLED 11 SP2
- 

### HP RGS 6.0 system requirements

Sender and Receiver systems require 1.5 GHz or greater processor with SSE2 multi-media instruction extension. 32-bit color display adapter and 512 MB minimum RAM.

---

### Recommended system requirements

- Sender system graphics: nVidia Quadro 2000 or better.
  - Driver: 305.29 or greater
  - Public Internet access required on both sender and receiver sides.
  - If a proxy is required, Windows system must be set up with manual proxy configuration. PAC and WAPD (automatic configuration script and automatic proxy detection) will not work.
- 

### Support

- <http://www.hp.com/support/rgs>
- 

### Care Packs

- HP 1-year 24x7—Phone-in RGS software technical support.  
[http://h30094.www3.hp.com/product/sku/2600275/mfg\\_partno/UC267E](http://h30094.www3.hp.com/product/sku/2600275/mfg_partno/UC267E)
  - HP 1-year 9x5—Phone-in RGS software technical support.  
[http://h30094.www3.hp.com/product/sku/2600276/mfg\\_partno/UC268E](http://h30094.www3.hp.com/product/sku/2600276/mfg_partno/UC268E)
  - 60-Day Trial License  
<https://h20392.www2.hp.com/portal/swdepot/try.do?productNumber=RGS52C>
- 

## For more technical details see: [The HP RGS QuickSpecs](#)

---

© Copyright 2012-2013 Hewlett-Packard Development Company, L.P. The information contained herein is subject to change without notice. The only warranties for HP products and services are set forth in the express warranty statements accompanying such products and services. Nothing herein should be construed as constituting an additional warranty. HP shall not be liable for technical or editorial errors or omissions contained herein.

All other trademarks are the property of their respective owners.

4AA0-8844ENW, February 2013

