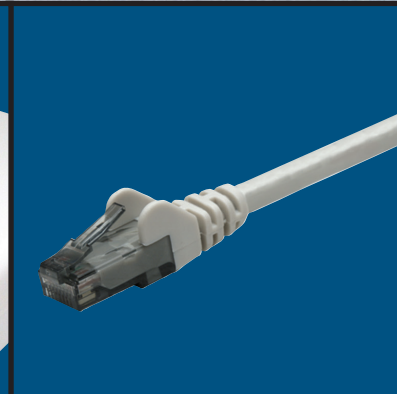
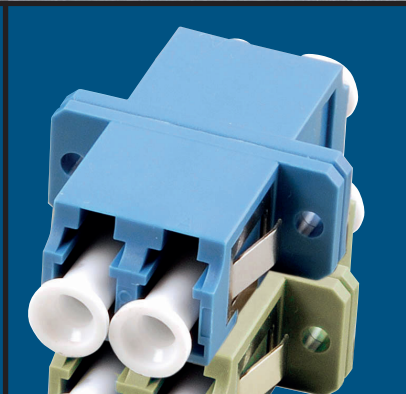
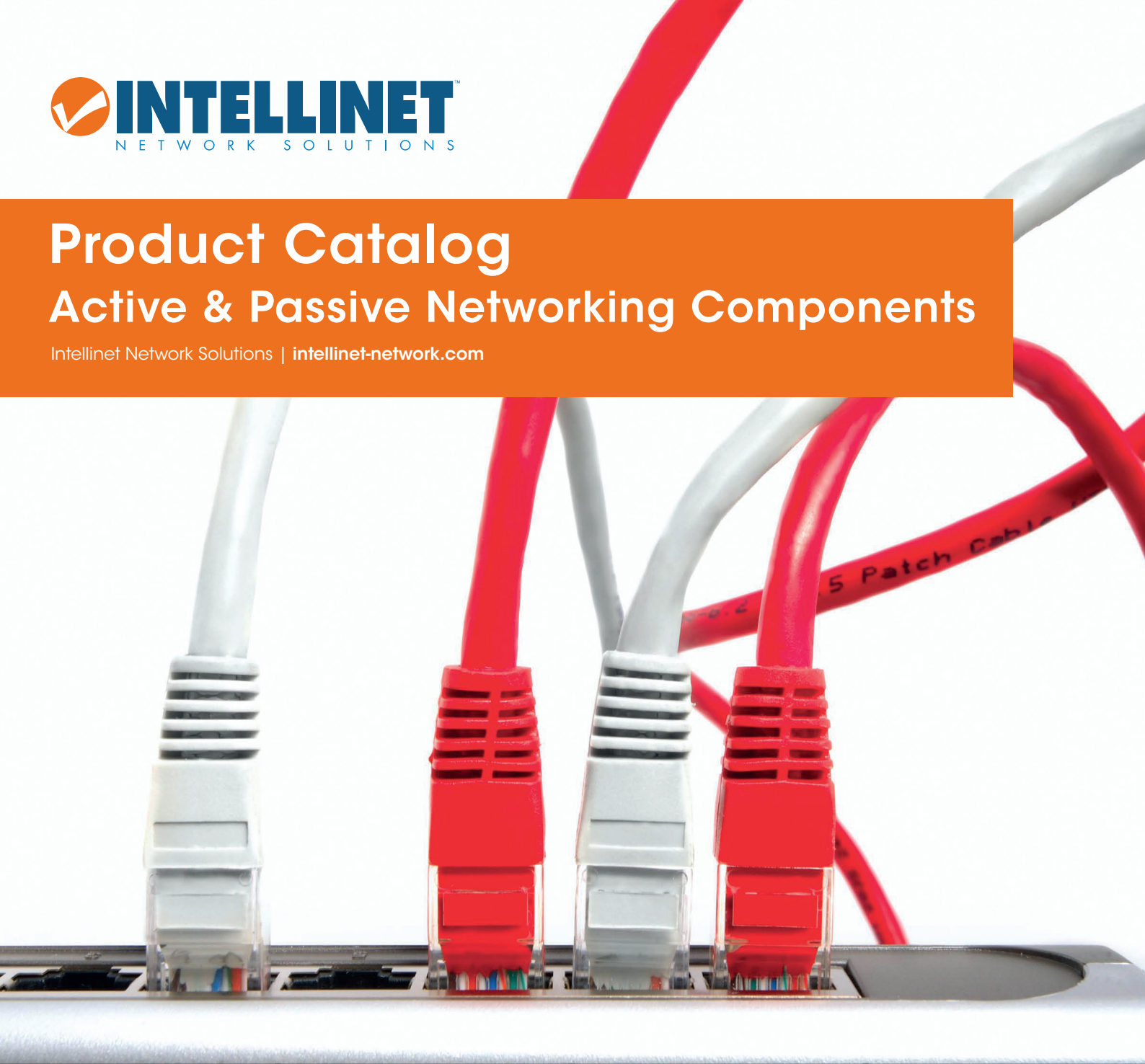


Product Catalog

Active & Passive Networking Components

Intellinet Network Solutions | intellinet-network.com





Why buy **INTELLINET**[™] NETWORK SOLUTIONS

- To make the most of a partnership you can depend on, you want the reliability of a company trusted to meet or exceed expectations for more than 25 years.
- To further expand your projections and enhance your image, you demand the same thing in a business relationship that your own clients do: a commitment to customer satisfaction.

Intellinet Network Solutions is a provider of both active and passive networking components. Our product range enables businesses to deliver end-to-end networking solutions, ensuring optimal systems efficiency, reliability and security. We deliver the level of performance needed in today's growing, data-intensive small/mid-sized business environments.

© IC Intracom. All rights reserved. Intellinet Network Solutions is a globally registered trademark of IC Intracom. Other trademarks and trade names are the property of their respective owners. Some product images are simulated, actual appearance may vary. Distribution or reproduction of this document and use or disclosure of the contents herein are prohibited, unless specifically authorized.

Lifetime Warranty: Some Intellinet Network Solutions products are warranted against defects in material and workmanship for as long as they are owned by the original purchaser. See your local dealer for repair or replacement.

Copyright © 2014

Cabinets/Racks

	Page
19" Network Racks	5
Accessories for 19" Network Racks	6
19" Server Cabinets	10
Accessories for 19" Server Cabinets	11
19" Wallmount Cabinets	15
Accessories for 19" Wallmount Cabinets	17
10" Wallmount Cabinets	19
Accessory Matrix	20

Switches

Fast Ethernet Switches	24
Gigabit Switches	25
Web-Smart Switches	26
PoE+ Switches	26
PoE+ Web-Smart Switches	26
PoE+ Web-Smart Gigabit Switches	26
PoE+ Fast Ethernet Midspan Switches	27

Switch Accessories

PoE Injectors	29
Gigabit Ethernet Transceivers	30
Media Converters	30

Network Cameras

Network Camera Overview	33
Network Cameras	34

Patch Panels

Patch Panel Overview	38
Patch Panels Cat5e	39
Patch Panels Cat6	39
Patch Panels Cat6a/Modular	41
Blank Plates	42
Mini Patch Panels	42

Patch Cables

Cat5e Patch Cables	45
Cat6 Patch Cables	45
Bulk Cables	47

RJ45 Accessories

RJ45 Accessories	49
Keystones	50
Frame Set/Consolidation Box	51
Data Outlets	52
Cover Plates	53
Installation Sections/Tools	54
Testers	55

Fiber Optic Cable

Fiber Optic Cable 50/125µm Multimode	59
Fiber Optic Cable 62,5/125µm Multimode	60
Fiber Optic Cable 9/125µm Single Mode, Fiber Pigtail	61

Fiber Optic Accessories

Splice Boxes with sliding units	63
Splice Boxes	63
Splice Box Accessories	65
Couplers	66
Couplers, Distribution Plates, Dust Covers	68
Fiber Optic Tools	69

Index

Index	70
-----------------	----

**Intellinet Rack Finder:**

www.ic-intracom.com/rackfinder

Intellinet Fiber Optic Cable Finder:

www.ic-intracom.com/online/LWL

Cabinets/Racks

19" Network Racks	5
Accessories for 19" Network Racks	6
19" Server Cabinets	10
Accessories for 19" Server Cabinets	11
19" Wallmount Cabinets	15
Accessories for 19" Wallmount Cabinets	17
10" Wallmount Cabinets	19
Accessory Matrix	20



19" Network Racks

- Ideal for all 19" rackmount applications
- Tempered-glass door
- Side and rear panels are easily removable
- 2 apertures allow cable inlet from top or bottom
- Pedestal height 100mm with removable panels
- 2mm steel bearing structure powder coated
- Special 3mm steel reinforcement joint welded in every roof and base corner
- Ventilation slots allow passage of warm air
- IP 20
- Grounding set included
- Made in EU

Available Colors

- RAL 7035 Grey
- RAL 9005 Black

Delivery Condition

- Ships fully assembled

Available Accessories

- Shelves
- Caster wheels
- Blank panels
- Cable management
- Cable inlet panels
- Set of cage nuts
- Document holder
- Ventilation units

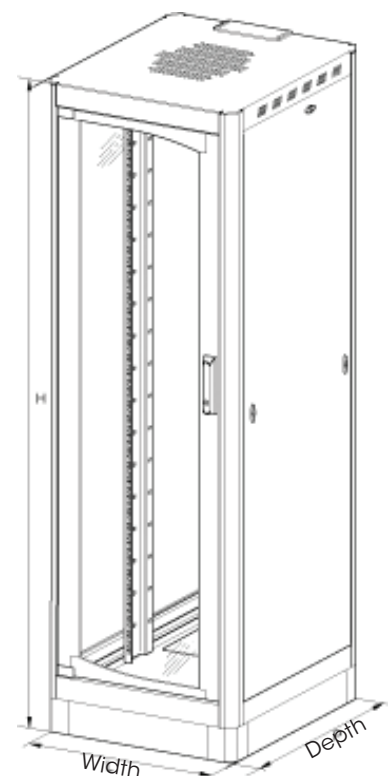
Available Heights

- 27 U
- 38 U
- 42 U

Load Capacity

- Static: max. 500 kg
- When standing on casters: max. 220 kg

Barcode	U	Height	Width	Depth	Color
711210	27	1390mm	600mm	600mm	RAL 7035 Grey
711227	27	1390mm	600mm	600mm	RAL 9005 Black
711258	38	1879mm	600mm	800mm	RAL 7035 Grey
711265	38	1879mm	600mm	800mm	RAL 9005 Black
711234	42	2057mm	600mm	600mm	RAL 7035 Grey
711241	42	2057mm	600mm	600mm	RAL 9005 Black
711272	42	2057mm	600mm	800mm	RAL 7035 Grey
711289	42	2057mm	600mm	800mm	RAL 9005 Black
711296	42	2057mm	800mm	800mm	RAL 7035 Grey
711302	42	2057mm	800mm	800mm	RAL 9005 Black



Fixed Shelf for 19" Cabinets

Mount
 • 2-point mount on front pair of 19" uprights

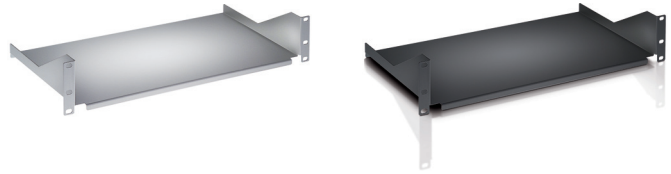
Height
 • 2 U

Depth
 • 250mm
 • 400mm

Capacity
 • 25 kg

Available Colors
 • RAL 7035 Grey
 • RAL 9005 Black

Barcode	U	Height	Width	Depth	Color
710886	2	88mm	482mm	250mm	RAL 7035 Grey
710893	2	88mm	482mm	250mm	RAL 9005 Black
710909	2	88mm	482mm	400mm	RAL 7035 Grey
710916	2	88mm	482mm	400mm	RAL 9005 Black



Fixed Shelf for 19" Cabinets

Mount
 • 4-point mount on 2 pairs of 19" uprights (front and back)

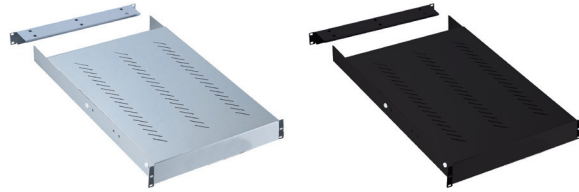
Height
 • 2 U

Depth
 • 600mm
 • For cabinets with at least 800mm depth

Capacity
 • 80 kg

Available Colors
 • RAL 7035 Grey
 • RAL 9005 Black

Barcode	U	Height	Width	Depth	Color
710923	2	88mm	482mm	600mm	RAL 7035 Grey
710930	2	88mm	482mm	600mm	RAL 9005 Black



Fixed Shelf for 19" Cabinets

Mount
 • 2-point mount on front pair of 19" uprights

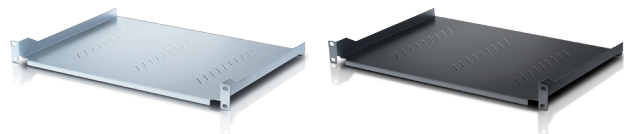
Height
 • 2 U

Depth
 • 350mm
 • For cabinets with at least 800mm depth

Capacity
 • 15 kg

Available Colors
 • RAL 7035 Grey
 • RAL 9005 Black

Barcode	U	Height	Width	Depth	Color
710947	2	88mm	482mm	350mm	RAL 7035 Grey
710954	2	88mm	482mm	350mm	RAL 9005 Black



Intellinet Rack Finder:
www.ic-intracom.com/rackfinder

Set of Cage Nuts for 19" Cabinets

- Set Contains
- 50 M6 cage nuts
 - 50 M6 screws
 - 50 plastic washers

Barcode	Contents
711081	50-Pack



Set of Cage Nuts for 19" Cabinets

- Available Colors
- RAL 7035 Grey
 - RAL 9005 Black

Barcode	Description	Color
711104	Document Holder	RAL 7035 Grey
711111	Document Holder	RAL 9005 Black



Set of Cage Nuts for 19" Cabinets

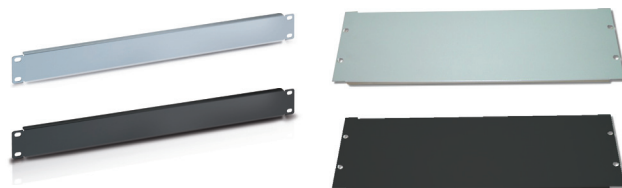
- Mount
- 2-point mount on front pair of 19" uprights

Available Heights

- 1 U
- 3 U

- Available Colors
- RAL 7035 Grey
 - RAL 9005 Black

Barcode	U	Height	Width	Color
710985	1	44mm	482mm	RAL 7035 Grey
710992	1	44mm	482mm	RAL 9005 Black
711005	3	132mm	482mm	RAL 7035 Grey
711012	3	132mm	482mm	RAL 9005 Black



Searching for the right product?
Use our Accessory Matrix on Page 20.

Cable Inlet Panel for 19" Racks

Mount
 • 2-point mount on front pair of 19" uprights

Height
 • 1 U

Available Colors
 • RAL 7035 Grey
 • RAL 9005 Black

Barcode	U	Height	Width	Color
711029	1	44mm	482mm	RAL 7035 Grey
711036	1	44mm	482mm	RAL 9005 Black



Cable Inlet Panel for 19" Racks

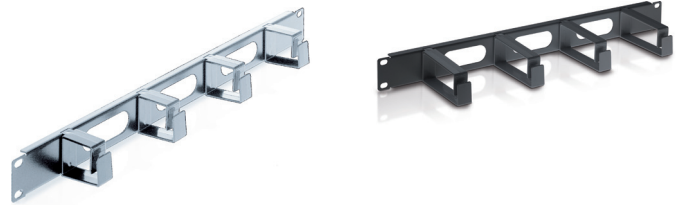
Mount
 • 2-point mount on front pair of 19" uprights

Height
 • 1 U

Available in 2 Versions
 • Long plastic rings
 • Short plastic rings

Available Colors
 • RAL 7035 Grey
 • RAL 9005 Black

Barcode	U	Height	Width	Ring	Color
711043	1	44mm	482mm	short	RAL 7035 Grey
711050	1	44mm	482mm	short	RAL 9005 Black
711067	1	44mm	482mm	long	RAL 7035 Grey
711074	1	44mm	482mm	long	RAL 9005 Black



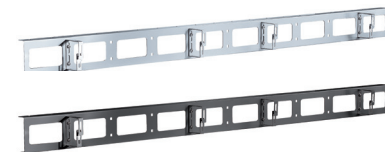
Vertical Cable Management Tray for 19" Racks

Type
 • Couple of front vertical cable management trays
 • 8 rings

Mount
 • For 42U, 800mm-wide cabinets only
 • 16 screws and 16 cage nuts included

Available Colors
 • RAL 7035 Grey
 • RAL 9005 Black

Barcode	Color
711128	RAL 7035 Grey
711135	RAL 9005 Black

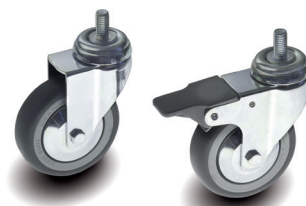


Caster Wheels for 19" Cabinets

• Suitable for 19" network racks

Features
 • 2 with brake
 • 2 without brake

Barcode	Contents
711098	Set of four casters



2-Fan Ventilation Unit for 19" Racks

- Mount**
- Roof mounting
- Cooling**
- Ventilation unit with 2 fans
- Fan Specifications**
- Motor type: brushless external-rotor motor with auto-restart
 - Air flow: 300 m³/h
 - Operating temperature: 10°C to 60°C

- Noise level: 43 dBa
 - Operating voltage: 230 V
 - 50 Hz
- Available Colors**
- RAL 7035 Grey
 - RAL 9005 Black

Barcode	Fans	Thermostat	Color
711159	2	no	RAL 7035 Grey
711166	2	no	RAL 9005 Black



4-Fan Ventilation Unit for 19" Racks

- Mount**
- Roof mounting
- Cooling**
- Ventilation unit with 4 fans
- Fan Specifications**
- Motor type: brushless external-rotor motor with auto-restart
 - Air flow: 600 m³/h

- Operating temperature: 10°C to 60°C
 - Noise level: 43 dBa
 - Operating voltage: 230 V
 - 50 Hz
- Available Colors**
- RAL 7035 Grey

Barcode	Fans	Thermostat	Color
711197	4	no	RAL 7035 Grey



2-Fan Ventilation Unit incl. thermostat for 19" Racks

- Mount**
- Roof mounting
- Cooling**
- Ventilation unit with 2 fans
 - With thermostat
- Fan Specifications**
- Motor type: brushless external-rotor motor with auto-restart
 - Air flow: 300 m³/h

- Operating temperature: -10°C to 60°C
 - Noise level: 43 dBa
- Available Colors**
- RAL 7035 Grey
 - RAL 9005 Black

Barcode	Fans	Thermostat	Color
711173	2	yes	RAL 7035 Grey
711180	2	yes	RAL 9005 Black



4-Fan Ventilation Unit incl. thermostat for 19" Racks

- Mount**
- Roof mounting
- Cooling**
- Ventilation unit with 4 fans
 - With thermostat
- Fan Specifications**
- Motor type: brushless external-rotor motor with auto-restart
 - Air flow: 600 m³/h

- Operating temperature: -10°C to 60°C
 - Noise level: 43 dBa
 - Operating voltage: 230 V
 - 50 Hz
- Available Colors**
- RAL 9005 Black

Barcode	Fans	Thermostat	Color
711203	4	yes	RAL 9005 Black



19" Server Cabinets

- Ideal for all 19" rackmount applications
- Tempered-glass door
- Side and rear panels are easily removable
- Pedestal height 100mm with removable panels
- 2mm steel bearing structure
- Special 3mm steel reinforcement joint welded in every roof and base corner
- Ventilation slots allow passage of warm air
- Grounding set included
- Made in EU

Available Heights

- 27 U
- 42 U

Load Capacity

- Static: max. 700 kg

Available Colors

- RAL 7035 Grey
- RAL 9005 Black

Delivery Condition

- Ships fully assembled

Available Accessories

- Shelves
- Caster wheels
- Blank panels
- Cable management
- Cable inlet panels
- Set of cage nuts
- Document holder
- Ventilation units



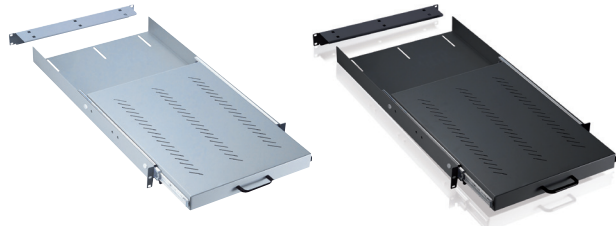
Barcode	U	Height	Width	Depth	Special Features	Color
711319	27	1390mm	600mm	1000mm		RAL 7035 Grey
711326	27	1390mm	600mm	1000mm		RAL 9005 Black
711333	27	1390mm	600mm	1000mm	Perforated rear panel	RAL 7035 Grey
711340	27	1390mm	600mm	1000mm	Perforated rear panel	RAL 9005 Black
711357	42	2057mm	600mm	1000mm		RAL 7035 Grey
711364	42	2057mm	600mm	1000mm		RAL 9005 Black
711371	42	2057mm	600mm	1000mm	Perforated rear panel	RAL 7035 Grey
711388	42	2057mm	600mm	1000mm	Perforated rear panel	RAL 9005 Black
711395	42	2057mm	600mm	1000mm	Perforated front and rear doors	RAL 7035 Grey
711401	42	2057mm	600mm	1000mm	Perforated front and rear doors	RAL 9005 Black
711418	42	2057mm	800mm	1000mm	Perforated front and rear doors	RAL 7035 Grey
711425	42	2057mm	800mm	1000mm	Perforated front and rear doors	RAL 9005 Black

19" Sliding Shelf

- Mount**
- 4-point mount on 2 pairs of 19" uprights (front and back)
- Height**
- 2 U
- Depth**
- 750mm

- Capacity**
- 40 kg
- Available Colors**
- RAL 7035 Grey
 - RAL 9005 Black

Barcode	U	Height	Width	Depth	Color
710961	2	88mm	482mm	750mm	RAL 7035 Grey
710978	2	88mm	482mm	750mm	RAL 9005 Black

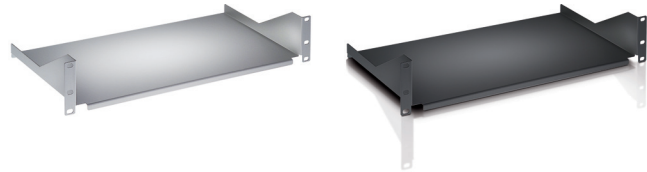


Fixed Shelf for 19" Cabinets

- Mount**
- 2-point mount on front pair of 19" uprights
- Height**
- 2 U
- Depth**
- 250mm
 - 400mm

- Capacity**
- 25 kg
- Available Colors**
- RAL 7035 Grey
 - RAL 9005 Black

Barcode	U	Height	Width	Depth	Color
710886	2	88mm	482mm	250mm	RAL 7035 Grey
710893	2	88mm	482mm	250mm	RAL 9005 Black
710909	2	88mm	482mm	400mm	RAL 7035 Grey
710916	2	88mm	482mm	400mm	RAL 9005 Black

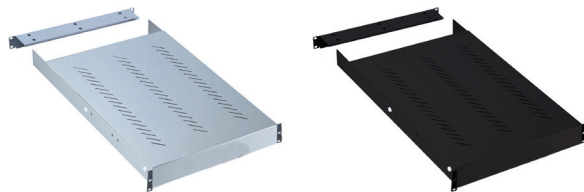


Fixed Shelf for 19" Cabinets

- Mount**
- 4-point mount on 2 pairs of 19" uprights (front and back)
- Height**
- 2 U
- Depth**
- 600mm
 - For 19" cabinets with 800mm depth minimum

- Capacity**
- 80 kg
- Available Colors**
- RAL 7035 Grey
 - RAL 9005 Black

Barcode	U	Height	Width	Depth	Color
710923	2	88mm	482mm	600mm	RAL 7035 Grey
710930	2	88mm	482mm	600mm	RAL 9005 Black

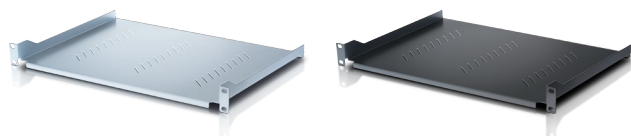


19" Fixed Shelf

- Mount**
- 2-point mount on front pair of 19" uprights
- Height**
- 2 U
- Depth**
- 350mm
 - For 19" cabinets with 520mm depth minimum

- Capacity**
- 15 kg
- Available Colors**
- RAL 7035 Grey
 - RAL 9005 Black

Barcode	U	Height	Width	Depth	Color
710947	2	88mm	482mm	350mm	RAL 7035 Grey
710954	2	88mm	482mm	350mm	RAL 9005 Black



19" Cable Inlet Panel

Mount

- 2-point mount on front pair of 19" uprights

Height

- 1 U

Available Colors

- RAL 7035 Grey
- RAL 9005 Black

Barcode	U	Height	Width	Color
711029	1	44mm	482mm	RAL 7035 Grey
711036	1	44mm	482mm	RAL 9005 Black



19" Cable Inlet Panel

Mount

- 2-point mount on front pair of 19" uprights

Available Colors

- RAL 7035 Grey
- RAL 9005 Black

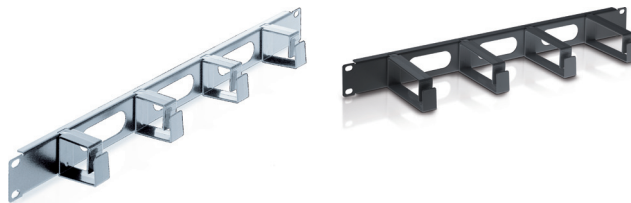
Height

- 1 U

Available in 2 Versions

- Long rings
- Short rings

Barcode	U	Height	Width	Rings	Color
711043	1	44mm	482mm	short	RAL 7035 Grey
711050	1	44mm	482mm	short	RAL 9005 Black
711067	1	44mm	482mm	long	RAL 7035 Grey
711074	1	44mm	482mm	long	RAL 9005 Black



Vertical Cable Management Tray for 19" Racks

Type

- Couple of front vertical cable management trays
- 8 rings

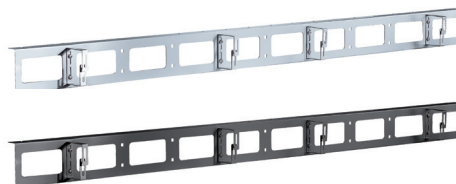
Mount

- For 42U, 800mm-wide cabinets only
- 16 screws and 16 cage nuts included

Available Colors

- RAL 7035 Grey
- RAL 9005 Black

Barcode	Color
711128	RAL 7035 Grey
711135	RAL 9005 Black



Caster Wheels for 19" Cabinets

Suitable for 19" racks and cabinets

Features

- Set of 6 wheels

Maximum Capacity

- 400 kg

Barcode	Contents
711142	6 Casters



Set of Cage Nuts for 19" Cabinets

Set contains

- 50 M6 cage nuts
- 50 M6 screws
- 50 plastic washers

Barcode	Contents
711081	50-Pack

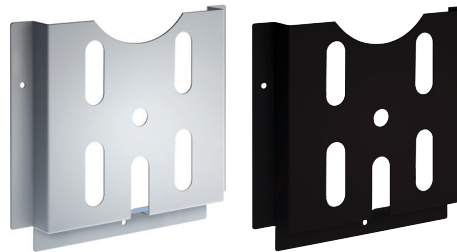


Document Holder for 19" Cabinets

Available Colors

- RAL 7035 Grey
- RAL 9005 Black

Barcode	Description	Color
711104	Document holder	RAL 7035 Grey
711111	Document holder	RAL 9005 Black



19" Blank Panel

Mount

- 2-point mount on front pair of 19" uprights

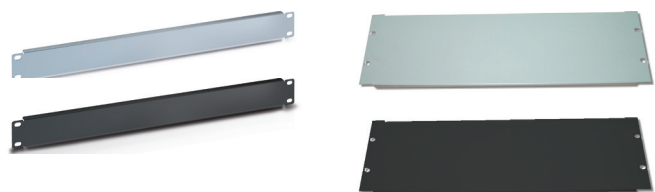
Available Heights

- 1 U
- 3 U

Available Colors

- RAL 7035 Grey
- RAL 9005 Black

Barcode	U	Height	Width	Color
710985	1	44mm	482mm	RAL 7035 Grey
710992	1	44mm	482mm	RAL 9005 Black
711005	3	132mm	482mm	RAL 7035 Grey
711012	3	132mm	482mm	RAL 9005 Black



Searching for the right product?
Use our Accessory Matrix on Page 20.

2-Fan Ventilation Unit for 19" Racks

- Mount**
- Roof mounting
- Cooling**
- Ventilation unit with 2 fans
- Fan Specifications**
- Motor type: brushless external-rotor motor with auto-restart
 - Air flow: 300 m³/h
 - Operating temperature: -10°C to 60°C
- Available Colors**
- Noise level: 43 dBa
 - Operating voltage: 230 V
 - 50 Hz
 - RAL 7035 Grey
 - RAL 9005 Black

Barcode	Fans	Thermostat	Color
711159	2	no	RAL 7035 Grey
711166	2	no	RAL 9005 Black



4-Fan Ventilation Unit for 19" Racks

- Mount**
- Roof mounting
- Cooling**
- Ventilation unit with 4 fans
- Fan Specifications**
- Motor type: brushless external-rotor motor with auto-restart
 - Air flow: 600 m³/h
 - Operating temperature: -10°C to 60°C
- Available Colors**
- Noise level: 43 dBa
 - Operating voltage: 230 V
 - 50 Hz
 - RAL 7035 Grey

Barcode	Fans	Thermostat	Color
711197	4	no	RAL 7035 Grey



2-Fan Ventilation Unit incl. thermostat for 19" Racks

- Mount**
- Roof mounting
- Cooling**
- Ventilation unit with 2 fans
 - With thermostat
- Fan Specifications**
- Motor type: brushless external-rotor motor with auto-restart
 - Air flow: 300 m³/h
 - Operating temperature: -10°C to 60°C
- Available Colors**
- Noise level: 43 dBa
 - Operating Voltage: 230 V
 - 50 Hz
 - RAL 7035 Grey
 - RAL 9005 Black

Barcode	Fans	Thermostat	Color
711173	2	yes	RAL 7035 Grey
711180	2	yes	RAL 9005 Black



4-Fan Ventilation Unit incl. thermostat for 19" Racks

- Mount**
- Roof mounting
- Cooling**
- Ventilation unit with 4 fans
 - With thermostat
- Fan Specifications**
- Motor type: brushless external-rotor motor with auto-restart
 - Air flow: 600 m³/h
- Available Colors**
- Operating temperature: -10°C to 60°C
 - Noise level: 43 dBa
 - Operating voltage: 230 V
 - 50 Hz
 - RAL 9005 Black

Barcode	Fans	Thermostat	Color
711203	4	yes	RAL 9005 Black



19" Wallmount Cabinets

- Side panels may be easily removed, giving access to the rear cabling
- The safety glass door opens more than 180° and can be easily removed
- The 19" uprights manufactured according to IEC 297-1 may be adjusted in depth
- 2 apertures allow cable entry from floor level or from the roof, where a ventilation kit can be installed
- IP20
- Made in EU

Available Heights

- 10 U
- 16 U

Available Colors

- RAL 7035 Grey
- RAL 9005 Black

Delivery Condition

- Ships fully assembled

Available Accessories

- Shelves
- Blank panels
- Cable management
- Cable inlet panels
- Set of cage nuts
- Document holder
- Ventilation units



Barcode	U	Height	Width	Depth	Color
710800	10	520mm	600mm	520mm	RAL 7035 Grey
710817	10	520mm	600mm	520mm	RAL 9005 Black
710824	16	787mm	600mm	520mm	RAL 7035 Grey
710831	16	787mm	600mm	520mm	RAL 9005 Black
710848	16	787mm	600mm	620mm	RAL 7035 Grey
710855	16	787mm	600mm	620mm	RAL 9005 Black

19" Wallmount Cabinets

- Ideal for small installations
- Upright supports are adjustable
- 2 apertures allow cables to be hooked up from floor level or at the top
- The removable door is made of tempered safety glass
- IP20
- Made in EU

Available Heights

- 6 U

Available Colors

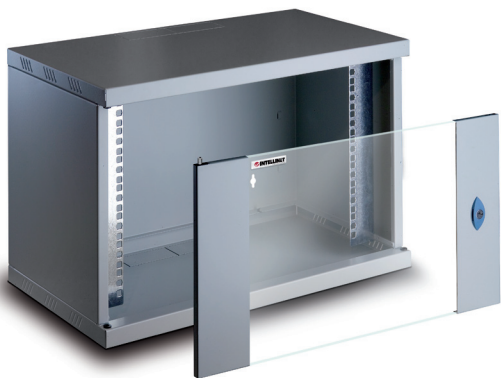
- RAL 7035 Grey
- RAL 9005 Black

Delivery Condition

- Ships fully assembled

Available Accessories

- Shelves
- Blank panels
- Cable management
- Cable inlet panels
- Set of cage nuts
- Document holder
- Ventilation units



Barcode	U	Height	Width	Depth	Color
710725	6	386mm	600mm	320mm	RAL 7035 Grey
710732	6	386mm	600mm	320mm	RAL 9005 Black

19" Wallmount Cabinets

- Compact wall enclosure with removable panels for easy installation
- Safety-glass door which can be easily removed and opens more than 180°
- 2 apertures allow cable entry from floor level or from the roof, where a ventilation kit can be installed
- Slots for ventilation on top and bottom part
- IP20
- Made in EU

Available Heights

- 7 U
- 10 U
- 13 U

Available Colors

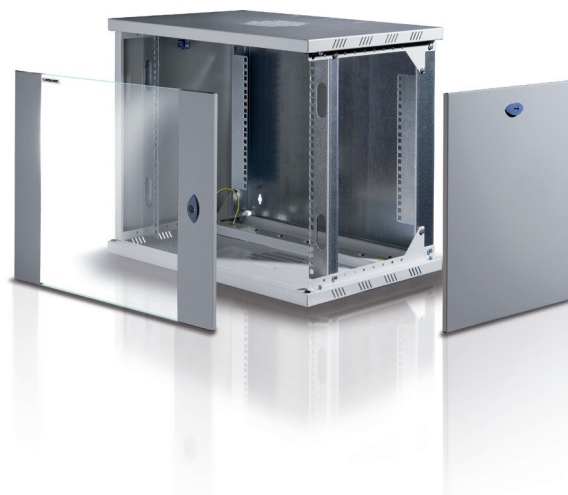
- RAL 7035 Grey
- RAL 9005 Black

Delivery Condition

- Ships fully assembled

Available Accessories

- Shelves
- Blank panels
- Cable management
- Cable inlet panels
- Set of cage nuts
- Document holder
- Ventilation units



Barcode	U	Height	Width	Depth	Color
710749	7	386mm	600mm	420mm	RAL 7035 Grey
710756	7	386mm	600mm	420mm	RAL 9005 Black
710763	10	520mm	600mm	420mm	RAL 7035 Grey
710770	10	520mm	600mm	420mm	RAL 9005 Black
710787	13	655mm	600mm	420mm	RAL 7035 Grey
710794	13	655mm	600mm	420mm	RAL 9005 Black

Set of Cage Nuts for 19" Cabinets

- Set contains
- 50 M6 cage nuts
 - 50 M6 screws
 - 50 plastic washers

Barcode	Contents
711081	50-Pack



Document Holder for 19" Cabinets

- Available Colors
- RAL 7035 Grey
 - RAL 9005 Black

Barcode	Description	Color
711104	Document holder	RAL 7035 Grey
711111	Document holder	RAL 9005 Black



Fixed Shelf for 19" Cabinets

- Mount
- 2-point mount on front pair of 19" uprights

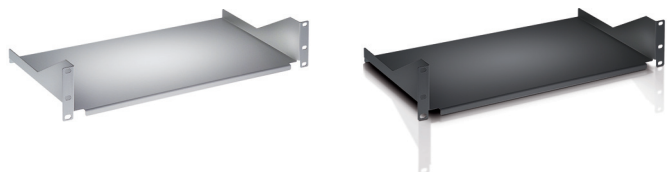
- Height
- 2 U

- Depth
- 250mm
 - 400mm

- Capacity
- 25 kg

- Available Colors
- RAL 7035 Grey
 - RAL 9005 Black

Barcode	U	Height	Width	Depth	Color
710886	2	88mm	482mm	250mm	RAL 7035 Grey
710893	2	88mm	482mm	250mm	RAL 9005 Black
710909	2	88mm	482mm	400mm	RAL 7035 Grey
710916	2	88mm	482mm	400mm	RAL 9005 Black



Fixed Shelf for 19" Cabinets

- Mount
- 2-point mount on front pair of 19" uprights

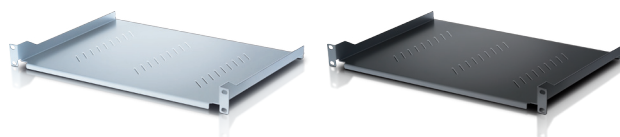
- Height
- 2 U

- Depth
- 350mm
 - For 19" cabinets with 520mm depth minimum

- Capacity
- 15 kg

- Available Colors
- RAL 7035 Grey
 - RAL 9005 Black

Barcode	U	Height	Width	Depth	Color
710947	2	88mm	482mm	350mm	RAL 7035 Grey
710954	2	88mm	482mm	350mm	RAL 9005 Black



Cable Inlet Panel for 19" Racks

Mount
 • 2-point mount on front pair of 19" uprights

Height
 • 1 U

Available Colors
 • RAL 7035 Grey
 • RAL 9005 Black

Barcode	U	Height	Width	Color
711029	1	44mm	482mm	RAL 7035 Grey
711036	1	44mm	482mm	RAL 9005 Black



Cable Management Panel for 19" Racks

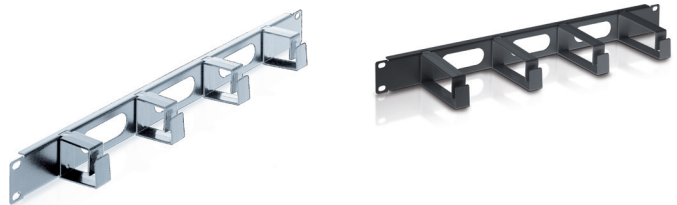
Mount
 • 2-point mount on front pair of 19" uprights

Available Colors
 • RAL 7035 Grey
 • RAL 9005 Black

Height
 • 1 U

Available in 2 Versions
 • Long rings
 • Short rings

Barcode	U	Height	Width	Rings	Color
711043	1	44mm	482mm	short	RAL 7035 Grey
711050	1	44mm	482mm	short	RAL 9005 Black
711067	1	44mm	482mm	long	RAL 7035 Grey
711074	1	44mm	482mm	long	RAL 9005 Black



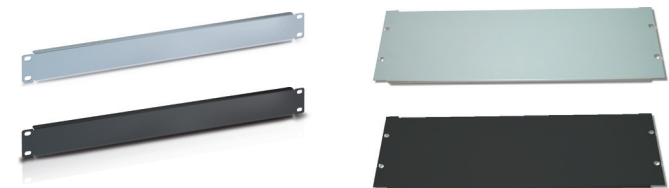
19" Blank Panel

Mount
 • 2-point mount on front pair of 19" uprights

Available Heights
 • 1 U
 • 3 U

Available Colors
 • RAL 7035 Grey
 • RAL 9005 Black

Barcode	U	Height	Width	Color
710985	1	44mm	482mm	RAL 7035 Grey
710992	1	44mm	482mm	RAL 9005 Black
711005	3	132mm	482mm	RAL 7035 Grey
711012	3	132mm	482mm	RAL 9005 Black



Searching for the right product?
Use our Accessory Matrix on Page 20.

10" Wallmount Cabinet

- Side panels are removable and the 2 apertures allow cables to be hooked up from floor level or at the top
- The upright supports, which may be adjusted in depth, can take accessories and equipment up to a width of 10"
- The door is made of smoked, tempered safety glass
- Made in EU

Available Heights

- 7 U

Available Colors

- RAL 7035 Grey
- RAL 9005 Black

Delivery Condition

- Ships fully assembled



Barcode	U	Height	Width	Depth	Color
710862	7	387mm	358mm	270mm	RAL 7035 Grey
710879	7	387mm	358mm	270mm	RAL 9005 Black

Switches

Fast Ethernet Switches	24
Gigabit Switches	25
Web-Smart Switches.	26
PoE+ Switches	26
PoE+ Web-Smart Switches	26
PoE+ Web-Smart Gigabit Switches	26
PoE+ Fast Ethernet Midspan Switches	27



	Ports	Speed	PoE/PoE+	Design/Housing	Power	Special Features	Page	Barcode
	5	10/100		Compact Desktop Metal	External		24	523301
	8	10/100		Desktop Metal	External		24	523318
	8	10/100	PoE+	Large Desktop Metal	Internal	<ul style="list-style-type: none"> • PoE power budget 36 watts • 4 ports support PoE/PoE+ • Endspan 	24	560757
	8	10/100	PoE+	Desktop Metal	External	<ul style="list-style-type: none"> • PoE power budget 66 watts • 8 ports support PoE/PoE+ 	24	560764
	8	10/100	PoE+	Desktop Metal	Internal	<ul style="list-style-type: none"> • PoE power budget 126 watts • 8 ports support PoE/PoE+ • Web-smart/managed 	24	560665
	16	10/100	PoE	Rackmount Metal	Internal	<ul style="list-style-type: none"> • Midspan • Output power per port: up to 15.4 watts • 8 ports data input - 8 ports data output • 8 ports support PoE 	24	502931
	16	10/100		Rackmount Metal	Internal		25	520409
	16	10/100	PoE	Rackmount Metal	Internal	<ul style="list-style-type: none"> • PoE power budget 123 watts • Output power per port: up to 30 watts 	25	560849
	16	10/100		Compact Desktop Metal	External		25	522595
	16	10/100	PoE+	Rackmount Metal	Internal	<ul style="list-style-type: none"> • PoE power budget of 58 watts • Output power per port: up to 30 watts • 8 ports support PoE/PoE+ 	25	560771
	24	10/100		Rackmount Metal	Internal		25	520416
	24	10/100		Rackmount Metal	Internal	<ul style="list-style-type: none"> • 2 SFP ports + 2 Gigabit RJ45 - combo ports 	26	523929

	Ports	Speed	PoE/PoE+	Design/Housing	Power	Special Features	Page	Barcode
	5	10/100/1000		Compact Desktop Metal	External		26	530378
	8	10/100/1000		Compact Desktop Metal	External		26	530347
	8	10/100/1000	PoE	Desktop Metal	Internal	• 4 ports support PoE	26	560856
	8	10/100/1000	PoE+	Desktop Metal	Internal	• PoE power budget 130 watts • Output power up to 34 watts on ports 1 - 4 • Output power up to 15,4 watts on ports 5 - 8	26	560641
	8	10/100/1000	PoE+	Large Desktop Metal	Internal	• PoE power budget of 123 watts • Output power per port: up to 30 watts • 8 Ports support PoE/PoE+ • Web-smart/managed	27	560542
	16	10/100/1000		Rackmount Metal	Internal	• Fans	27	524148
	16	10/100/1000	PoE	Rackmount Metal	Internal	• PoE power budget of 166 watts • Output power per port: up to 30 watts • 16 ports support PoE • 2 SFP ports • Web-smart/managed	27	560535
	16	10/100/1000		Rackmount Metal	Internal	• 4 SFP ports • Web-smart/managed • Fans	27	560801
	24	10/100/1000	PoE+	Rackmount Metal	Internal	• PoE power budget of 164 watts • Output power per port: up to 30 watts • 24 ports support PoE • 2 SFP ports • Web-smart/managed	27	560559
	24	10/100/1000		Rackmount Metal	Internal	• 4 SFP ports • Web-smart/managed • Fans	27	560818
	24	10/100/1000		Rackmount Metal	Internal	• Fans	27	524162

Fast Ethernet Office Switch

- 5 10/100 auto-sensing ports—automatically detect optimal network speeds
- Supports any combination of 10 Mbps or 100 Mbps network devices
- Store and forward switching architecture
- All RJ45 ports with Auto-MDIX (auto uplink) support
- Supports NWay auto-negotiation
- Store and forward switching architecture

Barcode: 523301 Metal, 5 Ports

Barcode: 523318 Metal, 8 Ports

- Full/half duplex operation
- IEEE 802.3x flow control for full duplex
- Zero packet loss backpressure flow control for half duplex
- Packet filtering/forwarding rates: 148,800 pps (100 Mbps), 14,880 pps (10 Mbps)
- Supports 1024 MAC address entries
- 48 kBytes buffer memory
- LEDs for power, link/activity, full/half duplex
- Compact metal case



8-Port PoE+ Desktop Switch

- Provides power and data connection for up to 8 PoE network devices
- Save time and money by delivering data and power via existing network cables
- IEEE 802.3at/af-compliant RJ45 PoE/PoE+ output ports
- PoE power budget of 66 watts
- Supports IEEE 802.3at and IEEE 802.3af-compliant PoE devices (wireless access points, VoIP phones, IP cameras)

Barcode: 560764 8 PoE ports

Barcode: 560757 4 PoE ports, 4 non-PoE ports

- Supports IEEE 802.3at/af detection and short circuit, overload and high-voltage protection
- All RJ45 ports with Auto-MDIX (auto uplink) support
- Store and forward switching architecture
- IEEE 802.3x flow control for full duplex
- Supports up to 4096 MAC address entries
- 160 kBytes buffer memory
- Desktop-size metal case



8-Port PoE+ Web-Smart Switch

- Provides power and data connection for up to 8 PoE network devices
- Save time and money by delivering data and power via existing network cables
- IEEE 802.3at/af-compliant RJ45 PoE/PoE+ output ports
- Power output up to 30 watts per port
- PoE power budget of 126 watts
- Supports IEEE 802.3at and IEEE 802.3af-compliant PoE devices (wireless access points, VoIP phones, IP cameras)

Barcode: 560665

- Supports IEEE 802.3at/af detection and short circuit, overload and high-voltage protection
- All RJ45 ports with Auto-MDIX (auto uplink) support
- Web-based configuration
- Supports VLAN (tag-based and port-based)



8-Port Rackmount PoE Midspan

- IEEE 802.3af-compliant 8-port PoE midspan
- 10/100 auto-sensing ports automatically detect optimal network speeds
- 8 RJ45 input ports with NWay support
- 8 IEEE 802.3af-compliant RJ45

Barcode: 502931

- PSE/PoE output ports for signal and data
- Power output up to 15.4 watts per port
- 19" rackmount metal case
- LED for Power and PoE Link



Fast Ethernet Rackmount Switch

- 10/100 auto-sensing ports automatically detect optimal network speeds
- All RJ45 ports with Auto-MDIX (auto uplink) support
- Auto-detection of full/half duplex modes in all ports
- Supports 802.3x flow control for full duplex mode and collision-based backpressure for half duplex mode
- Supports NWay auto-negotiation
- Provides independent 256-entry forwarding table for multicast addresses
- Non-blocking & non-head-of-line blocking full-wire-speed forwarding
- Store and forward switching architecture
- Supports up to 8192 MAC address entries
- 256 kBytes buffer memory
- 19" compact rigid metal case
- Includes 19" rackmount brackets

Barcode: 520409 Metal, 16 Ports,
Barcode: 520416 Metal, 24 Ports



16-Port Fast Ethernet PoE+ Switch

- Save time and money by delivering data and power via existing network cables
- IEEE 802.3at/af-compliant RJ45 PoE/PoE+ output ports
- Power output up to 30 watts per port
- PoE power budget of 123 watts
- All RJ45 ports with Auto-MDIX and NWay auto-negotiation support
- 10/100 auto-sensing ports automatically detect optimal network speeds
- Supports IEEE 802.3at and IEEE 802.3af-compliant PoE devices (wireless access points, VoIP phones, IP cameras)
- Supports IEEE 802.3at/af detection and short circuit, overload and high-voltage protection
- Store and forward switching architecture
- Full/half duplex operation
- IEEE 802.3x flow control for full duplex
- Zero packet loss backpressure flow control for half duplex

Barcode: 560849



Fast Ethernet Office Switch

- 10/100 auto sensing ports— automatically detect optimal network speeds
- Supports any combination of 10 Mbps or 100 Mbps network devices
- All RJ45 ports with Auto-MDIX (auto uplink) support
- Supports NWay auto-negotiation
- Broadcast storm control
- Store and forward switching architecture
- Full/half-duplex operation
- IEEE 802.3x flow control for full duplex
- Zero packet loss backpressure flow control for half duplex
- Packet filtering/forwarding rates: 148,800 pps (100 Mbps), 14,880 pps (10 Mbps)
- Supports 2048 MAC address entries
- 96 kBytes buffer memory
- Compact metal case

Barcode: 522595 Metal



16-Port Fast Ethernet PoE+ Switch

- 10/100 auto-sensing ports automatically detect optimal network speeds
- All RJ45 ports with Auto-MDIX and NWay auto-negotiation support
- IEEE 802.3at/af-compliant RJ45 PoE/PoE+ output ports
- 8 integrated PoE ports (ports 9 to 16) with a power output of up to 30 watts per port
- Store and forward switching architecture
- Full/half duplex operation
- Supports 4096 MAC address entries
- 156 kBytes buffer memory
- LEDs for power, link/activity and PoE

Barcode: 560771



24-Port Fast Ethernet Office Switch

- 24 10/100 Mbps auto-sensing Auto-MDIX RJ45 ports
- 2 Gigabit (RJ45 + SFP) combo ports
- Supports NWay auto-negotiation
- Store and forward switching architecture
- Wire-speed packet filtering and forwarding rate
- Full/half duplex operation
- Supports 802.3x flow control for full duplex mode and collision-based backpressure for half duplex mode
- Supports up to 8192 MAC address entries
- 320 kBytes buffer memory
- Includes 19" rackmount brackets

Barcode: 523929 Metal



5-Port Gigabit Ethernet Switch

- 10/100/1000 auto-sensing Auto MDI-X ports — automatically detect optimal network speeds
- High performance, half and full duplex, with zero packet loss
- Full flow control support provides optimum performance
- Auto-learning of network configuration
- Supports up to 8192 MAC address entries
- 128 kBytes buffer memory
- Supports jumbo frames up to 9 kBytes
- Store and forward switching architecture
- Non-blocking wire-speed forwarding and filtering

Barcode: 530378 Metal, 5 Ports

Barcode: 530347 Metal, 8 Ports



8-Port PoE+ Desktop Gigabit Switch

- Provides power and data connection for up to 4 PoE network devices
- Save time and money by delivering data and power via existing network cables
- 10/100/1000 auto-sensing ports automatically detect optimal network speeds
- IEEE 802.3at/af-compliant RJ45 PoE/PoE+ output ports
- Green Ethernet power-saving technology deactivates unused ports and adjusts power levels based on the cable length
- Power output up to 31.5 watts on ports 1-2 (IEEE 802.3at) or up to 15.4 watts on ports 1-4 (IEEE 802.3af)
- Total power budget of 63 watts
- Supports IEEE 802.3at and IEEE 802.3af-compliant PoE devices (wireless access points, VoIP phones, IP cameras)
- Supports IEEE 802.3at/af detection and short circuit, overload and high-voltage protection
- All RJ45 ports with Auto-MDIX (auto uplink) support
- Store and forward switching architecture
- IEEE 802.3x flow control for full duplex

Barcode: 560856



8-Port PoE+ Web-Managed Desktop Gigabit Switch

- Provides power and data connection for up to 8 PoE network devices
- Save time and money by delivering data and power via existing network cables
- 10/100/1000 auto-sensing ports automatically detect optimal network speeds
- IEEE 802.3at/af-compliant RJ45 PoE/PoE+ output ports
- Power output up to 34 watts on ports 1 - 4 (IEEE 802.3at)
- Power output up to 15.4 watts on ports 5 - 8 (IEEE 802.3af)
- Total power budget of 130 watts
- Supports IEEE 802.3at and IEEE 802.3af-compliant PoE devices (wireless access points, VoIP phones, IP cameras)
- Supports IEEE 802.3at/af detection and short circuit, overload and high-voltage protection
- All RJ45 ports with Auto-MDIX (auto uplink) support
- Store and forward switching architecture
- IEEE 802.3x flow control for full duplex

Barcode: 560641



8-Port PoE+ Web-Managed Desktop Gigabit Switch

- Provides power and data connection for up to 8 PoE network devices
- Save time and money by delivering data and power via existing network cables
- 10/100/1000 auto-sensing ports automatically detect optimal network speeds
- IEEE 802.3at/af-compliant RJ45 PoE/PoE+ output ports
- Power output up to 30 Watts per port
- Total power budget of 123 watts
- Supports IEEE 802.3at and IEEE 802.3af-compliant PoE devices (wireless access points, VoIP phones, IP cameras)
- Supports IEEE 802.3at/af detection and short circuit, overload and high-voltage protection
- All RJ45 ports with Auto-MDIX (auto uplink) support
- Web-based configuration
- Provides detailed traffic and power use statistics

Barcode: 560542



16-Port Gigabit Ethernet Rackmount Switch

- 10/100/1000 auto-sensing ports automatically detect optimal network speeds
- All RJ45 ports with Auto-MDIX (auto uplink) support
- Supports NWay auto-negotiation
- Store and forward switching architecture
- Full/half duplex operation
- Supports 802.3x flow control for full duplex mode and collision-based backpressure for half duplex mode
- Complies with the IEEE 802.3az (Energy Efficient Ethernet EEE) specification
- Supports up to 8192 MAC address entries
- 256 kBytes buffer memory
- Includes 19" rackmount brackets
- Supports MAC address auto-learning and auto-aging

Barcode: 524148 Metal, 16 Ports

Barcode: 524162 Metal, 24 Ports



PoE+ Web-Managed Gigabit Ethernet Switch with 2 SFP Ports

- Provides power and data connection for up to 16 PoE network devices
- Save installation cost by delivering data and power over existing network cables
- 10/100/1000 auto-sensing ports automatically detect optimal network speeds
- 2 small form-factor pluggable GBIC module slots (SFP)
- IEEE 802.3at/af-compliant RJ45 PoE/PoE+ output ports
- Power output up to 30 watts per port
- Total power budget of 180 watts
- Supports IEEE 802.3at and IEEE 802.3af-compliant PoE devices (wireless access points, VoIP phones, IP cameras)
- Supports IEEE 802.3at/af detection and short circuit, overload and high-voltage pRedection
- All RJ45 ports with Auto-MDIX and NWay auto-negotiation support
- Web-based configuration

Barcode: 560535 16 PoE+ Ports

Barcode: 560559 24 PoE+ Ports



Web-Managed Gigabit Ethernet Switch with 4 SFP Ports

- 16 10/100/1000 Mbps auto-sensing ports automatically detect optimal network speeds
- 4 small form-factor pluggable GBIC module slots (SFP)
- All RJ45 ports with Auto-MDIX and NWay auto-negotiation support
- Complies with the IEEE 802.3az (Energy Efficient Ethernet EEE) specification
- Web- or Telnet-based configuration
- SNMP Management and Remote Monitoring (RMON)
- SNMP V1, V2, V3 with RMON groups 1, 2, 3 & 9
- Supports VLAN (tag-based and port-based)
- 802.1X authentication and IP/MAC-based Access Control Lists (ACL)
- Supports link aggregation (trunking)
- IGMP Snooping for multicast filtering

Barcode: 560801 16 Ports + 4 SFP Ports

Barcode: 560818 24 Ports + 4 SFP Ports



Switch Accessories

- PoE Splitters 29
- PoE Injectors 29
- Gigabit Ethernet Transceivers 30
- Media Converters 30



PoE Splitter

- Can be used to connect non-PoE IEEE 802.3af-compliant devices to a PoE injector or PoE switch
- Output current, selectable: 5, 7.5, 9 or 12 V DC
- 10/100 auto-sensing input port automatically detects optimal network speeds
- RJ45 input port with Auto-MDIX and NWay auto-negotiation support
- Full/half duplex operation
- Compact metal case
- LED for link on PoE input port

Standards

- IEEE 802.3 (10Base-T Ethernet)
- IEEE 802.3u (100Base-TX Fast Ethernet)
- IEEE 802.3af (Power over Ethernet)

General

- Media support:
 - 110Base-T Cat3, 4, 5 UTP/STP RJ45
 - 100Base-TX Cat5 UTP/STP RJ45
- Ports:
 - 1 RJ45 10/100 Mbps input port for 48 V IEEE 802.3af-compliant signal
 - 1 RJ45 10/100 Mbps output port
 - 1 power output port
- Output power:
 - 5, 7.5, 9 or 12 V DC, selectable via switch
 - Maximum output: 15.4 W
 - Polarity, outer: negative (-); inner: positive (+)
- Certifications: FCC Class A, CE

Package Contents

- PoE Splitter, Power Output Cable, User Manual



Barcode: 502900

PoE+ Splitter

- Can be used to connect non-PoE IEEE 802.3af/t-compliant devices to a PoE injector or PoE switch
- Output current, selectable: 5, 7.5, 9 or 12 V DC
- Power output: 5 V / 4 A, 7.5 V / 2.7 A, 9 V / 2.3 A and 12 V / 1.7 A
- 10/100 auto-sensing input port automatically detects optimal network speeds
- RJ45 input port with Auto-MDIX and NWay auto-negotiation support
- Full/half duplex operation
- Compact metal case
- LED for link on PoE input port

Standards

- IEEE 802.3af (Power over Ethernet)
- IEEE 802.3at (High-Power PoE+ Power over Ethernet)
- IEEE 802.3 (10Base-T Ethernet)
- IEEE 802.3u (100Base-TX Fast Ethernet)

General

- Media support:

- 10Base-T Cat3, 4, 5 UTP/STP RJ45
- 100Base-TX Cat5 UTP/STP RJ45
- Ports:
 - 1 RJ45 10/100 Mbps input port for 48 V IEEE 802.3af-compliant signal
 - 1 RJ45 10/100 Mbps output port
 - 1 power output port
- Certifications: FCC Class A, CE

General

- Media support:
 - 10Base-T Cat3, 4, 5 UTP/STP RJ45
 - 100Base-TX Cat5 UTP/STP RJ45
- Ports:
 - 1 RJ45 10/100 Mbps input port for 48 V IEEE 802.3af-compliant signal
 - 1 RJ45 10/100 Mbps output port
 - 1 power output port
- Certifications: FCC Class A, CE
- Power consumption: 25.4 watts (maximum)

Package Contents

- PoE Splitter, Power Cable, User Manual



Barcode: 560443

PoE Injector

- Ideal when AC power is not available
- Full-power Class 3 PoE design
- Power output of up to 15.4 watts
- Supports all IEEE 802.3af-compliant PoE devices (Wireless LAN access points and bridges, VoIP (Voice over Internet protocol) telephones, IP surveillance cameras)
- Supports IEEE 802.3af detection and short circuit, overload and high-voltage protection

Standards

- IEEE 802.3af (Power over Ethernet)
- IEEE 802.3 (10Base-T Ethernet)
- IEEE 802.3u (100Base-TX Fast Ethernet)

General

- Media support:
 - 100Base-TX Cat5 UTP/STP RJ45, 8 pin

- Ports:
 - 1 RJ45 100 Mbps input port
 - 1 RJ45 100 Mbps data and power output ports
 - 1 power input connector (3 pin)
- Protection functions:
 - Short-circuit protection for short GND
 - Overload protection for currents over 450 mA
 - High-voltage protection for output voltage exceeding 52 V
- Compatibility - general: all IEEE 802.3af-compliant PoE devices

Package Contents

- PoE Injector, Power Cable, User Manual



Barcode: 524179

1-Port Gigabit High-Power PoE+ Injector

- Save time and money by delivering data and power via existing network cables
- Power output of up to 30 watts
- Supports all IEEE 802.3af- and IEEE 802.3af-compliant PoE devices (Wireless LAN access points and bridges, VoIP [Voice over Internet Protocol] telephones, IP surveillance cameras)
- Supports IEEE 802.3af detection and short circuit, overload and high-voltage pRedection
- Three-Year Warranty

Standards

- IEEE 802.3af (Power over Ethernet)
- IEEE 802.3at (High-Power PoE+ Power over Ethernet)
- IEEE 802.3 (10Base-T Ethernet)
- IEEE 802.3ab (Gigabit Ethernet)
- IEEE 802.3u (100Base-TX Fast Ethernet)

Barcode: 560566

General

- Media support:
 - 100Base-TX Cat5 UTP/STP RJ45, 8 pin
 - 1000Base-T Cat5e UTP/STP RJ45, 8 pin
- Ports:
 - 1 RJ45 1000 Mbps input port
 - 1 RJ45 1000 Mbps data and power output port
 - 1 power input connector for external power adapter
- pRedection functions:
 - Short circuit pRedection for short GND
 - Overload pRedection for currents over 1.8 A
 - High-voltage pRedection for output voltage exceeding 58 V
- Compatibility - general: all IEEE 802.3at- and IEEE 802.3af-compliant PoE devices



Gigabit Ethernet SFP Mini-GBIC Transceiver

- Data transfer rate: 1000 Mbps
- One 1000Base-SX multi-mode fiber LC duplex port
- Distance support: up to 550 m (50/125 µm cable) or 220 m (62.5/125 µm cable)
- Wavelength: 850 nm
- SFP standard form factor
- Supports hot-plugging
- Compliant with SFP Transceiver MSA specifications
- For use with Intellinet Gigabit switch models 560801, 560818, 545006, 560559 and 560900
- Three-Year Warranty

Standards

- IEEE 802.3z (Fiber Optic Gigabit Ethernet)

General

- Media support:
 - 1000Base-SX multi-mode 50/125 µm fiber

Barcode: 545006

- 1000Base-SX multi-mode 62.5/125 µm fiber
- Connector: fiber LC duplex port, 1000Base-SX
- Distances:
 - 550 m (50/125 µm fiber cable)
 - 220 m (62.5/125 µm fiber cable)
- Wavelength: 850 nm
- Fiber power budget
 - Maximum TX power: -3 dBm
 - Minimum TX power: -8 dBm
 - Sensitivity: -20 dB
 - Power budget: 8 dB
- Design: SFP (small form factor pluggable), 1.25 Gbps

Package Contents

- Gigabit Ethernet SFP Mini-GBIC Transceiver



Fast Ethernet Media Converter

- Data transfer rate: 100 Mbps
- One 10/100Base-TX RJ45 port, maximum distance 100 m / 300 ft.
- RJ45 port with Auto MDI/MDI-X support and auto-negotiation
- One 100Base-FX multi-mode Fiber SC duplex port
- Fiber distance support: up to 2 km / 1.24 mi (62.5/125 or 50/125 µm cable)
- Wavelength: 1310 nm
- Flow control
- Status LEDs for power and Link/TX for both ports
- External power adapter, 5 V DC
- Three-Year Warranty

Standards

- IEEE 802.3 (Twisted Pair Ethernet)
- IEEE 802.3u (Twisted Pair/LWL Fast Ethernet)

General

- Media support:
 - 100Base-TX Cat3 or higher UTP/STP RJ45, EIA/TIA 568

Barcode: 506502

- 100Base-FX multi-mode 62.5/125 or 50/125 µm Fiber
- Connectors:
 - One RJ45 port, 100Base-TX
 - One Fiber SC duplex port, 100Base-FX
- Distances:
 - 2 km / 1.24 mi (62.5/125 or 50/125 µm fiber cable)
 - 100 m / 300 ft (RJ45 cable)
- Wavelength: 1310 nm
- Min. TX power: -22 dBm
- Max. TX power: -12 dBm
- RX sensitivity: -30 dBm
- Signal loss: 2 dB/km
- Certifications: FCC Class B, CE

Power

- External power adapter, 5 V DC, 1 A
- Power consumption: 2.5 Watts (maximum)

Package Contents

- Fast Ethernet Media Converter, External power adapter, User manual



Fast Ethernet Media Converter

- Data transfer rate: 100 Mbps
- One 10/100Base-TX RJ45 port, maximum distance 100 m / 300 ft.
- RJ45 port with Auto MDI/MDI-X support and auto-negotiation
- One 100Base-FX multi-mode Fiber ST duplex port
- Fiber distance support: up to 2 km / 1.24 mi (62.5/125 or 50/125 μ m cable)
- Wavelength: 1310 nm
- Flow control
- Status LEDs for power and Link/TX for both ports
- External power adapter, 5 V DC
- Three-Year Warranty

Standards

- IEEE 802.3 (Twisted Pair Ethernet)
- IEEE 802.3u (Twisted Pair/LWL Fast Ethernet)

Barcode: 506519 Distance up to 2 km

Barcode: 506533 Distance up to 220 m

General

- Media support:
 - 100Base-TX Cat3 or higher UTP/STP RJ45, EIA/TIA 568
 - 100Base-FX multi-mode 62.5/125 or 50/125 μ m Fiber
- Connectors:
 - One RJ45 port, 100Base-TX
 - One Fiber ST duplex port, 100Base-FX
- Distances:
 - 2 km / 1.24 mi (62.5/125 or 50/125 μ m fiber cable)
 - 100 m / 300 ft (RJ45 cable)
- Wavelength: 1310 nm
- Min. TX power: -22 dBm
- Max. TX power: -12 dBm
- RX sensitivity: -30 dBm
- Signal loss: 2 dB/km
- Certifications: FCC Class B, CE Mark



Network Solutions

by  **INTELLINET**
NETWORK SOLUTIONS



Patch Panels, Patch Cables, Switches
(incl. PoE) and much more

 **INTELLINET**[®]
NETWORK SOLUTIONS









Network Cameras

Network Camera Overview33
Network Cameras34



Intelinet Rack Finder:
www.ic-intracom.com/rackfinder

Barcode Model	551380 IDC-752IR	551397 IDC-757IR	551441 IDC-862	551410 IDC-767IR	551366 IBC-637IR	551069 IBC-667IR
						
Image Sensor	1/4" Micron progressive-scan CMOS	1/4" Micron progressive-scan CMOS	1/2.7" progressive-scan megapixel CMOS sensor	1/2.7" progressive-scan megapixel CMOS sensor	1/4" progressive-scan CMOS megapixel sensor	1/2.7" progressive-scan CMOS 2 megapixel sensor
Megapixels	1 megapixel	1 megapixel	2 megapixels	2 megapixels	1 megapixel	2 megapixels
Lens	2,7 - 9,0mm/ F1,2 varifocal megapixel auto-iris lens	2,7 - 9,0mm/ F1,2 varifocal megapixel auto-iris lens	F1.8, 4.0mm	3.3 - 12mm, F1.2 DC-iris megapixel varifocal lens	F1.8, 4.0mm	F1.2, 3 ~ 9mm, varifocal, auto-iris
Vandal-proof	No	Yes	No	Yes	No	No
Day & Night	Automatic	Automatic	Automatic	Automatic	Automatic	Automatic
Lux	0 with IR LEDs on (B/W)	0 with IR LEDs on (B/W);	0.2 lux at F2.0	0.05 lux at F1.2 (color) 0.001 lux at F1.2 (b/w) 0 lux at F1.2 (IR LED on)	0 with IR LEDs on (B/W)	0.05 lux at F1.2 (color) 0.001 lux at F1.2 (b/w) 0 lux at F1.2 (IR LED on)
Video Compression	H.264, Motion JPEG, MPEG-4, 3GPP	H.264, Motion JPEG, MPEG-4, 3GPP	Motion-JPEG MPEG4 Part2, Profile: SP H.264-BP, 3GPP	Motion-JPEG MPEG4 Part2, Profile: SP H.264-BP, 3GPP	Motion-JPEG MPEG4 Part2, Profile: SP H.264-BP, 3GPP	Motion-JPEG MPEG4 Part2, Profile: SP H.264-BP, 3GPP
Video Resolution	HDTV 720p 1280x720 SXGA 5:4 1280x1024	HDTV 720p 1280x720 SXGA 5:4 1280x1024	1920 x 1080 (1080p HDTV), 1280 x 720 (720p HDTV), 640 x 480 (VGA), 320 x 240 (QVGA)	1920 x 1080 (1080p HDTV), 1280 x 720 (720p HDTV), 640 x 480 (VGA), 320 x 240 (QVGA) and 160 x 120	1280 x 720 (720p HDTV), 640 x 480 (VGA), 320 x 240 (QVGA)	1920 x 1080 (1080p HDTV), 1280 x 720 (720p HDTV), 640 x 480 (VGA), 320 x 240 (QVGA)
Video Frame Rate (FPS)	30 at all resolutions	30 at all resolutions	30 at all resolutions	30 at all resolutions	30 at all resolutions	30 at all resolutions
Audio Support	No	No	2-way (full duplex)	No	No	2-way (full duplex)
Alarm In/Out	1/1	1/1	1/1	1/1	No	2/2
Intelligent Video	Integrated motion detection with pre- and post-alarm image/video buffering, FTP and e-mail video upload, SD/SDHC	Integrated motion detection with pre- and post-alarm image/video buffering, FTP and e-mail video upload, SD/SDHC	Integrated motion detection with pre- and post-alarm image/video buffering, FTP and e-mail video upload, SD/SDHC	Integrated motion detection with pre- and post-alarm image/video buffering, FTP and e-mail video upload, SD/SDHC	Integrated e-mail, FTP, DDNS and DHCP client	Integrated motion detection with pre- and post-alarm image/video buffering, FTP and e-mail video upload, SD/SDHC
Security	Multi-Level Password HTTPS (SSL v3)	Multi-Level Password HTTPS (SSL v3)	Multi-Level Password HTTPS (SSL v3)	Multi-Level Password HTTPS (SSL v3), IP address filter	Multi-Level Password HTTPS (SSL v3)	Multi-Level Password HTTPS (SSL v3)
Supported Protocols	TCP/IP, DHCP, PPPoE, ARP, ICMP, FTP, SMTP, DNS, NTP, UPnP, RTSP, RTP, HTTP, TCP, UDP, 3GPP / ISMA / RTSP, Bonjour	TCP/IP, DHCP, PPPoE, ARP, ICMP, FTP, SMTP, DNS, NTP, UPnP, RTSP, RTP, HTTP, TCP, UDP, 3GPP / ISMA / RTSP, Bonjour	TCP/IP, DHCP, PPPoE, ARP, ICMP, FTP, SMTP, DNS, NTP, UPnP, RTSP, RTP, HTTP, TCP, UDP, 3GPP / ISMA / RTSP, Bonjour, ONVIF 2.2	TCP/IP, DHCP, PPPoE, ARP, ICMP, FTP, SMTP, DNS, NTP, UPnP, RTSP, RTP, HTTP, TCP, UDP, 3GPP / ISMA / RTSP, Bonjour, ONVIF 1.02	TCP/IP, DHCP, PPPoE, ARP, ICMP, FTP, SMTP, DNS, NTP, UPnP, RTSP, RTP, HTTP, TCP, UDP, 3GPP/ISMA RTSP, Bonjour, ONVIF 2.2	TCP/IP, DHCP, PPPoE, ARP, ICMP, FTP, SMTP, DNS, NTP, UPnP, RTSP, RTP, HTTP, TCP, UDP, 3GPP/ISMA RTSP, Bonjour, ONVIF 2.2
Wireless	No	No	No	No	No	No
Power over Ethernet	Yes	Yes	Yes	Yes	Yes	Yes
Outdoor	No	Yes, IP66	No	Yes, IP66	Yes, IP67	Yes, IP66 heater, fan

Night Vision Megapixel Network IP Dome Camera

- Progressive-scan 1-megapixel CMOS image sensor for crystal-clear images
- Supports image resolutions up to 1280 x 720 (720p)
- True day & night function: Removable IR-cut filter (ICR) ensures true color representation during the day and impressive night-vision performance at night
- MicroSD/SDHC memory card slot for local storage
- Wide dynamic range (WDR) automatically adjusts to deliver high-quality video even in the most difficult lighting conditions
- Supports multiple simultaneous H.264, MPEG4, Motion-JPEG and 3GPP video streams
- Supports IEEE 802.3af Power over Ethernet injectors, mid- and endspans
- ONVIF 1.02 compliant
- 10x digital zoom
- 3-axis rotation for easy camera angle adjustment
- Excellent image quality with 30-fps full-motion video in all image resolutions
- For surveillance in low light or nighttime conditions, minimum 0 lux (complete darkness)
- 18 integrated infrared LEDs (850 nm) provide 15 m (50 ft.) effective range
- IR sensitive, supports external IR illuminators
- Equipped with an IR corrected DC-controlled auto-iris megapixel varifocal lens
- Event-triggered FTP and e-mail upload of still images and videos

- Integrated motion detection with pre- and post-alarm image/video buffering
- Supports local network storage: Can write video clips directly to a network attached storage (NAS) drive
- NAS storage supports cyclic recording, automatically overwriting older files once the allocated storage space is exceeded
- Supports SMB/CIFS (Windows) and NFS (Linux) network file systems
- Mobile phone streaming live video through 3GPP / ISMA / RTSP
- Supports privacy zone and text overlay functionality
- Supports HTTPS encryption and IP filter for enhanced security
- Supports UPnP with UPnP port forwarding capability
- Integrated e-mail, FTP, DDNS and DHCP client
- Easy-to-use 16-channel camera viewing and recording utility included (not compatible with NSC10/11 and NSC18 cameras)
- Analog video output through RCA connector

Standards

- IEEE 802.3 (10Base-T Ethernet)
- IEEE 802.3u (100Base-TX Fast Ethernet)
- IEEE 802.3af (Power over Ethernet 802.3at Type 1)



Barcode: 551380 IDC-752IR

Barcode: 551397 IDC-757IR, Outdoor (Vandalism Proof)

IDC-862 HD 2-Megapixel Network Mini-Dome Camera

- Progressive-scan 2-megapixel CMOS image sensor for crystal-clear images
- Supports image resolutions up to 1920 x 1080 (1080p)
- Excellent image quality with 30-fps full-motion video in all image resolutions
- Ultra-compact, less than 10 cm (4 in.) in diameter
- MicroSD memory card slot for local storage
- 2-way audio with integrated microphone
- Wide Dynamic Range (WDR) automatically adjusts to deliver high-quality video even in the most difficult lighting conditions
- Supports low light conditions, minimum 0.2 lux
- Supports multiple simultaneous H.264, MPEG4, Motion-JPEG and 3GPP video streams
- Supports IEEE 802.3af Power over Ethernet injectors, mid- and endspans
- ONVIF compliant
- 10x digital zoom
- 3-axis rotation for easy camera angle adjustment
- Event-triggered FTP and e-mail upload of still images and videos

- Integrated motion detection with pre- and post-alarm image/video buffering
- Supports local network storage: Can write video clips directly to a network attached storage (NAS) drive
- NAS storage supports cyclic recording, automatically overwriting older files once the allocated storage space is exceeded
- Supports SMB/CIFS (Windows) and NFS (Linux) network file systems
- Mobile phone streaming live video through 3GPP / ISMA / RTSP
- Supports privacy zone and text overlay functionality
- Supports HTTPS encryption and IP filter for enhanced security
- Supports UPnP with UPnP port forwarding capability
- Integrated e-mail, FTP, DDNS and DHCP client
- Easy-to-use 16-channel camera viewing and recording utility included
- Power supply not included, PoE injector must be purchased separately



Barcode: 551441

IDC-767IR Outdoor Night Vision 2-Megapixel Network Dome Camera

- Progressive-scan 2-megapixel CMOS image sensor for crystal-clear images
- Supports image resolutions up to 1920 x 1080 (1080p)
- True day & night function: Removable IR-cut filter (ICR) ensures true color representation during the day and impressive night-vision performance at night
- IP66-rated weather- and IK10-rated vandal-proof housing
- MicroSD memory card slot for local storage
- Wide Dynamic Range (WDR) automatically adjusts to deliver high-quality video even in the most difficult lighting conditions
- Supports multiple simultaneous H.264, MPEG4, Motion-JPEG and 3GPP video streams
- Supports IEEE 802.3af Power over Ethernet injectors, mid- and endspans
- ONVIF compliant
- 10x digital zoom
- 3-axis rotation for easy camera angle adjustment
- Excellent image quality with 30-fps full-motion video in all image resolutions
- For surveillance in low light or nighttime conditions, minimum 0 lux (complete darkness)
- 24 integrated infrared LEDs (850 nm) provide 20 m (65 ft.) effective range
- IR sensitive, supports external IR illuminators
- Equipped with an IR-corrected DC-controlled auto-iris megapixel varifocal lens
- Event-triggered FTP and e-mail upload of still images and videos
- Integrated motion detection with pre- and post-alarm image/video buffering
- Supports local network storage: Can write video clips directly to a network attached storage (NAS) drive
- NAS storage supports cyclic recording, automatically overwriting older files once the allocated storage space is exceeded
- Supports SMB/CIFS (Windows) and NFS (Linux) network file systems
- Mobile phone streaming live video through 3GPP / ISMA / RTSP
- Supports privacy zone and text overlay functionality
- Supports HTTPS encryption and IP filter for enhanced security
- Supports UPnP with UPnP port forwarding capability
- Integrated e-mail, FTP, DDNS and DHCP client
- Analog video output through RCA connector
- Easy-to-use 16-channel camera viewing and recording utility included



Barcode: 551410

IBC-637IR Outdoor Night Vision Megapixel HD Network Bullet Camera

- Progressive-scan 1-megapixel CMOS image sensor for crystal-clear images
- Supports image resolutions up to 1280 x 720 (720p)
- Supports simultaneous H.264, MPEG4 and Motion-JPEG image compression
- IP67 rated, waterproof and dust tight
- For surveillance in low light or nighttime conditions, minimum 0.2 lux
- Wide Dynamic Range (WDR) automatically adjusts to deliver high-quality video even in the most difficult lighting conditions
- Infrared LEDs with 15m effective range
- IR sensitive, supports external IR illuminators
- Supports multiple simultaneous H.264, MPEG4, Motion-JPEG and 3GPP video streams
- Supports IEEE 802.3af Power over Ethernet injectors, mid- and endspans
- ONVIF compliant
- 10x digital zoom
- Integrated motion detection with pre- and post-alarm image/video buffering
- Supports local network storage: Can write video clips directly to a network attached storage (NAS) drive
- NAS storage supports cyclic recording, automatically overwriting older files once the allocated storage space is exceeded
- Supports SMB/CIFS (Windows) and NFS (Linux) network file systems
- Event-triggered FTP and e-mail upload of still images and videos
- Mobile phone streaming live video through 3GPP / ISMA / RTSP
- Supports privacy zone and text overlay functionality
- Supports HTTPS encryption for enhanced security
- Supports UPnP with UPnP port forwarding capability
- Integrated e-mail, FTP, DDNS and DHCP client
- Supports IEEE 802.3af Power over Ethernet injectors, mid- and endspans
- Easy-to-use 16-channel camera viewing and recording utility included



Standards

- IEEE 802.3 (10Base-T Ethernet)
- IEEE 802.3u (100Base-TX Fast Ethernet)
- IEEE 802.3af (Power over Ethernet)

Barcode: 551366

IBC-667IR Outdoor Night Vision 2-Megapixel HD Network Bullet Camera

- Outdoor video surveillance for extreme conditions
- Progressive-scan 2-megapixel CMOS image sensor for crystal-clear images
- Supports image resolutions up to 1920 x 1080 (1080p)
- Supports simultaneous H.264, MPEG4 and Motion-JPEG image compression
- IP66 rated, waterproof and dust tight
- Built-in heater and fan allow operating the camera in severe environments as low as - 40°
- For surveillance in low light or nighttime conditions, minimum 0 lux (complete darkness)
- Wide Dynamic Range (WDR) automatically adjusts to deliver high-quality video even in the most difficult lighting conditions
- Infrared LEDs with 35m effective range
- IR sensitive, supports external IR illuminators
- Audio support, full duplex, up to 8 kHz
- Supports multiple simultaneous H.264, MPEG4, Motion-JPEG and 3GPP video streams
- Supports IEEE 802.3af Power over Ethernet injectors, mid- and endspans
- ONVIF compliant
- 10x digital zoom
- Integrated motion detection with pre- and post-alarm image/video buffering
- Supports local network storage: Can write video clips directly to a network attached storage (NAS) drive

- NAS storage supports cyclic recording, automatically overwriting older files once the allocated storage space is exceeded
- Supports SMB/CIFS (Windows) and NFS (Linux) network file systems
- Event-triggered FTP and e-mail upload of still images and videos
- Terminal block for external sensors or external alarm devices
- Mobile phone streaming live video through 3GPP/ISMA RTSP
- Supports privacy zone and text overlay functionality
- H.264 + MPEG4 + Motion-JPEG + 3GPP mobile phone streaming, audio and 10x digital zoom
- Supports HTTPS encryption for enhanced security
- Supports UPnP with UPnP port forwarding capability
- Integrated e-mail, FTP, DDNS and DHCP client
- Supports IEEE 802.3af Power over Ethernet injectors, mid- and endspans
- Easy-to-use 16-channel camera viewing and recording utility included

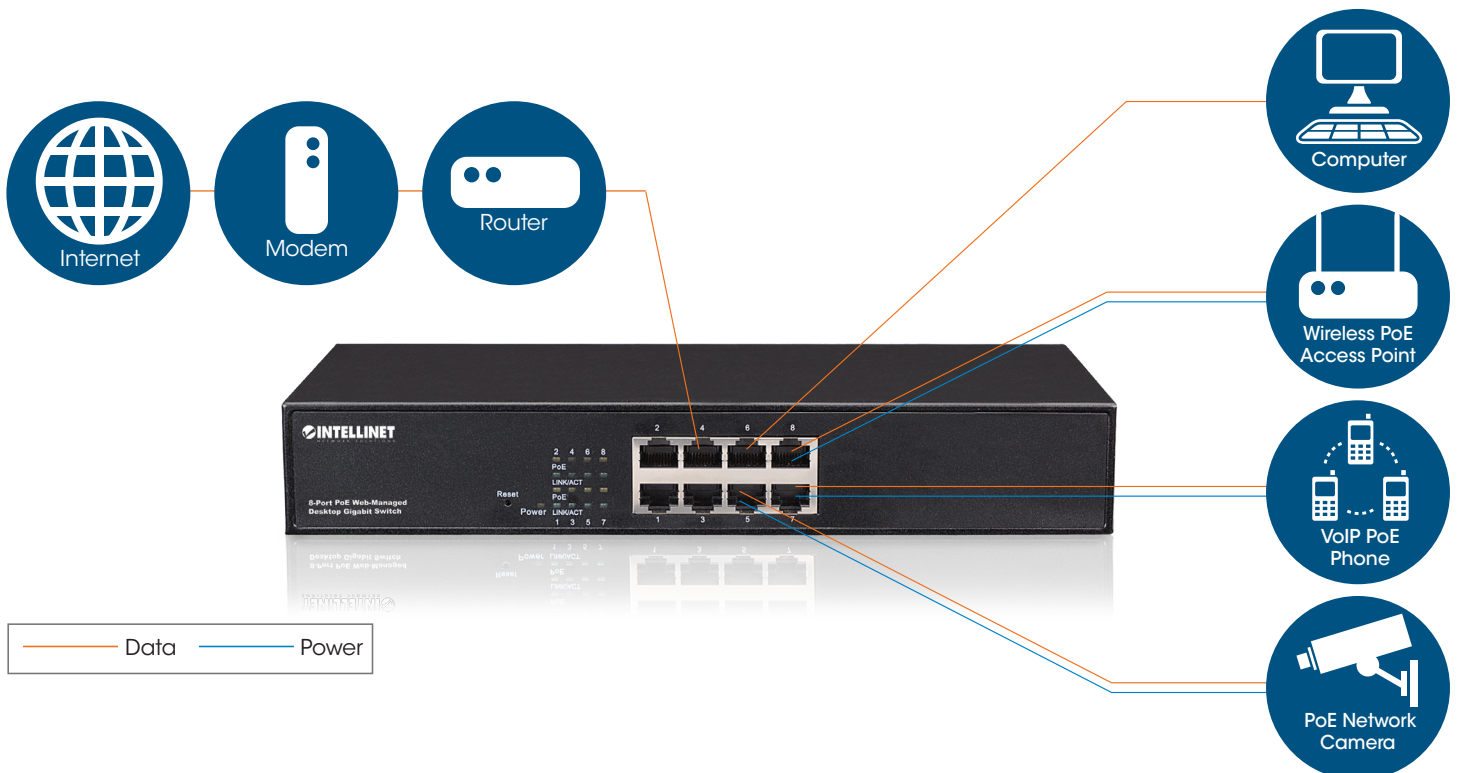


Standards

- IEEE 802.3 (10Base-T Ethernet)
- IEEE 802.3u (100Base-TX Fast Ethernet)
- IEEE 802.3af (Power over Ethernet)

Barcode: 551069

PoE Works with Cameras and More



Patch Panels

Patch Panel Overview	38
Patch Panels Cat5e	39
Patch Panels Cat6	39
Patch Panels Cat6a/Modular	41
Blank Plates	42
Mini-Patch Panels	42



	Ports	Category	Shielded	U	Page	Barcode
	48	Cat5e	No	2	58	513579
	24	Cat5e	No	1	58	513555
	24	Cat5e	No	1	58	993746
	42	Cat6	No	2	58	560283
	42	Cat6	No	1	59	520959
	24	Cat6	No	1	59	993784
	24	Cat6	Yes	1	59	720038
	24	Cat6	Yes	1	59	993753
	24	Cat6	Yes	1	60	993760
	24	As per module	As per module	1	60	993722
	24	As per module	As per module	1	60	993791
	24	As per module	As per module	1	60	993708
	16	Cat5e	Yes	1	61	993609
	24	Cat5e	Yes	1	61	993586
	16	Cat6	Yes	1	61	993616
	24	Cat6	Yes	1	61	993593

Cat5e Patch Panel

- Solid and reliable terminations for copper cabling featuring a minimum of 3mm 50-micro-inch gold-plated jack contacts
- Compatible with both 110 and Krone punch-down tools
- Supports 22 to 26 AWG stranded and solid wire
- For use with unshielded twisted pair (UTP) Cat5e network cable
- Ideal for Ethernet, Fast Ethernet and Gigabit Ethernet network applications
- Connects 48 RJ45 ports to a network

Barcode: 513579 48 ports, UTP, 2 U

- Occupies 2U rack height
- Meets 19" rackmount standards
- Lifetime Warranty

Standard

- IEEE 802.3 (10Base-T Ethernet)
- IEEE 802.3u (100Base-TX Fast Ethernet)
- IEEE 802.3ab (1000Base-T Gigabit Ethernet)

Package Contents

- Cat5e Patch Panel
- 4 mounting screws
- Instructions



Cat5e Patch Panel

- Solid and reliable terminations for copper cabling featuring a minimum of 3mm 50-micro-inch gold-plated jack contacts
- Compatible with both 110 and Krone punch-down tools
- Supports 22 to 26 AWG stranded and solid wire
- For use with unshielded twisted pair (UTP) Cat5e network cable
- Ideal for Ethernet, Fast Ethernet and Gigabit Ethernet network applications
- Connects 24 RJ45 ports to a network

Barcode: 513555 24 ports, UTP, 1 U

- Occupies 1U rack height
- Meets 19" rackmount standards
- Lifetime Warranty

Standard

- IEEE 802.3 (10Base-T Ethernet)
- IEEE 802.3u (100Base-TX Fast Ethernet)
- IEEE 802.3ab (1000Base-T Gigabit Ethernet)

Package Contents

- Cat5e Patch Panel
- 4 mounting screws
- Instructions



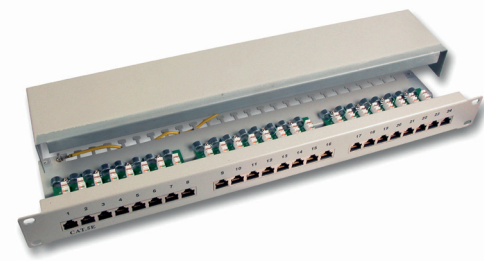
Cat5e Patch Panel

Specifications

- 24-port RJ45, 19"
- 1U
- RAL 7035
- Certified in accordance with Cat.5e
- 100 Mbps Acc. ISO/IEC 11801
- EN50173 TIA/EIA 568A, 568B and EN50173 number-coded

Barcode: 993746 24 ports, FTP, 1U

- 24 fully shielded RJ45 jacks 8-pin
- LSA terminal 19"
- Fully shielded steel-plate housing
- Strain relief via cable ties



Cat6 Patch Panel

- Solid and reliable terminations for copper cabling featuring a minimum of 3mm 50-micro-inch gold-plated jack contacts
- Compatible with both 110 and Krone punch-down tools
- Supports 22 to 26 AWG stranded and solid wire
- For use with unshielded twisted pair (UTP) Cat6 network cable
- Ideal for Ethernet, Fast Ethernet and Gigabit Ethernet network applications
- Connects 48 RJ45 ports to a network
- Occupies 2U rack height
- Meets 19" rackmount standards
- Lifetime Warranty

Barcode: 560283 48 ports, UTP, 2 U

Standard

- IEEE 802.3 (10Base-T Ethernet)
- IEEE 802.3u (100Base-TX Fast Ethernet)
- IEEE 802.3ab (1000Base-T Gigabit Ethernet)

Package Contents

- Cat6 Patch Panel
- 4 mounting screws
- Instructions



Cat6 Patch Panel

- Solid and reliable terminations for copper cabling featuring a minimum of 3mm 50-micro-inch gold-plated jack contacts
- Compatible with both 110 and Krone punch-down tools
- Supports 22 to 26 AWG stranded and solid wire
- For use with unshielded twisted pair (UTP) Cat6 network cable
- Ideal for Ethernet, Fast Ethernet and Gigabit Ethernet network applications
- Connects 48 RJ45 ports to a network

- Occupies 2U rack height
- Meets 19" rackmount standards
- Lifetime Warranty

Standard

- IEEE 802.3 (10Base-T Ethernet)
- IEEE 802.3u (100Base-TX Fast Ethernet)
- IEEE 802.3ab (1000Base-T Gigabit Ethernet)

Barcode: 520959 24 ports, UTP, 1 U



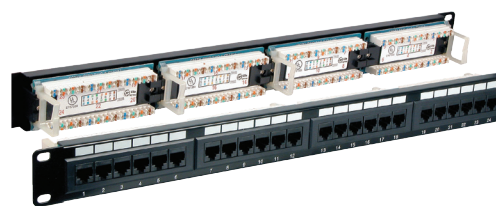
Cat6 Patch Panel

- 24-port UTP, RJ45 Cat6
- Color: RAL 9005, black

Specifications

- Class E (250 MHz) acc. ISO/IEC 11801 and EN50173
- Acc. to ISO/IEC 11801
- 24 unshielded RJ45 jacks
- 8-pole LSA terminals, vertical designed
- 19-in. steel-plate housing

Barcode: 993784 UTP, 1 U



24-Port Cat6 Patch Panel, Shielded

- Solid and reliable terminations for copper cabling featuring a minimum of 3mm 30-micro-inch gold-plated jack contacts
- Top-entry punch-down blocks simplify installation
- Compatible with Krone punch-down tools
- Supports 24 to 26 AWG stranded and solid wire
- For use with fully shielded twisted pair (FTP) Cat6 network cable
- Ideal for Ethernet, Fast Ethernet and Gigabit Ethernet network applications
- Meets 19" rackmount standards

Standards

- IEEE 802.3 (10Base-T Ethernet)
- IEEE 802.3u (100Base-TX Fast Ethernet)
- IEEE 802.3ab (Gigabit Ethernet)

Package Contents

- Cat6 Shielded Patch Panel
- 4 mounting screws
- Grounding wire
- Instructions

Barcode: 720038 24 ports, FTP, 1 U



Cat6 Patch Panel

- 24-port, RAL 7035 (light Grey), 1U

Specifications

- Class E (250 MHz) acc. to ISO/IEC 11801 and EN50173
- Printed with color code TIA 568 A/B
- 24 fully shielded RJ45 jacks
- 8-pole LSA terminals
- 19-in. fully shielded steel plate housing
- Strain relief via cable ties

Barcode: 993753 24 ports, FTP, 1 U



Cat6a Patch Panel

- 500 MHz, 24-port, RJ45, RAL 7035, 1U

Specifications

- 10Gbit Ethernet
- Fully shielded patch panel with 24 fully shielded jacks for use in structured cabling systems
- Cable connection via LSA terminals AWG22-AWG24
- With screw for ground connection
- Printed with color-code acc. TIA-568-B

Barcode: 993760 24 ports, FTP, 1 U



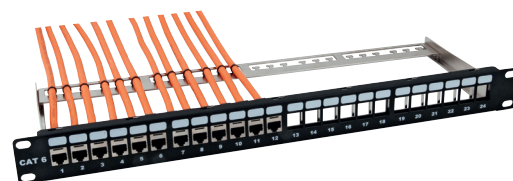
19" Distribution Panel

- 24-port, RAL 9005 (black), 1U

Specifications

- For Model 993326 (see page 51)
- Incl. cable management without modules

Barcode: 993722 24 ports, modular, 1 U



Cat6 Patch Panel

- 24-port, RAL 9005 (black), 1U

Specifications

- Incl. cable management
- Without modules

Barcode: 993791 24 ports, modular, 1 U



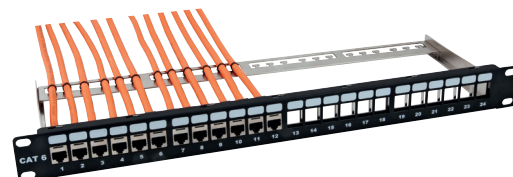
19" Distribution Panel

- 24-port, RAL 7035 (Grey), 1U

Specifications

- For Model 993326 (see Page 51)
- Incl. cable management
- Without modules

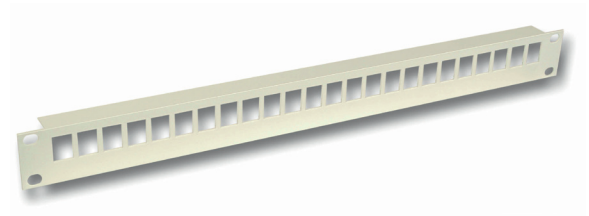
Barcode: 993708 24 ports, modular, 1 U



Blank Plate for RJ45 Inserts

- 1U, aluminum
- 16 RJ45 jacks

Barcode: 993548



Blank Plate for RJ45 Inserts

- 1U, aluminum
- 24 RJ45 jacks

Barcode: 993555

Cat5e Mini Patch Panel

- 8-port RJ45
- Color: RAL 7035 (grey)

Specifications

- ISO/IEC 11801
- EN50173 TIA/EIA 568A
- Fully shielded RJ45 jacks
- Metal housing RAL 7035
- 8-pole LSA terminal
- Dimensions: 162 x 44.5 x 112mm (W x H x D)

Barcode: 993609 8 ports, FTP, 1 U



Cat5e Mini Patch Panel

- ISO/IEC 11801, EN50173 TIA/EIA 568A
- Full shielded RJ45 sockets
- Metal housing, RAL 7035
- 12 pin LSA IDC connectors
- Dimensions: 212 x 44.5 x 130 mm (W x H x D)

Barcode: 993586 12 ports, FTP, 1 U



Cat6 Mini Patch Panel

- 8-port RJ45
- Color: RAL 7035 (grey)

Specifications

- ISO/IEC 11801, EN50173 TIA/EIA 568A
- Fully shielded RJ45 jacks
- Metal housing RAL 7035
- 12-pole LSA terminal
- Dimensions: 212 x 44.5 x 130mm (W x H x D)

Barcode: 993616 8 ports, FTP, 1 U



Cat6 Mini Patch Panel

- Cat6 TIA-568-B 2-10 1Gbit Ethernet performance
- 12 fully shielded RJ45 jacks
- Metal housing RAL 7035 (light Grey)
- 8-pole LSA terminal
- Dimensions: 241 x 44 x 109mm (W x H x D)

Barcode: 993593 12 ports, FTP, 1 U



Complete Power over Ethernet

from **INTELLINET**
NETWORK SOLUTIONS



CAMERAS



CABLES



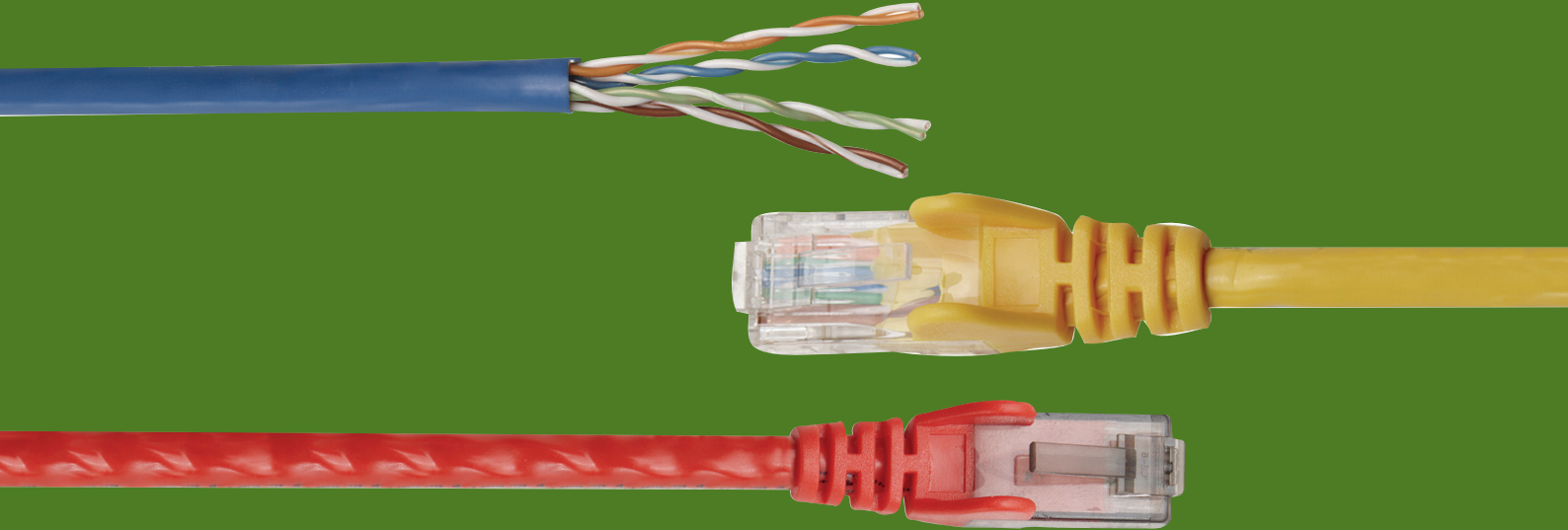
SWITCHES



intellinet-network.com

Patch Cables

- Cat5e Patch Cables.45
- Cat6 Patch Cables.45
- Network Installation Cables.47





Length	Grey	White	Black	Red	Orange	Yellow	Green	Blue	Purple	Pink
Cat5e U/UTP										
0.5 m	318228	318082	318143	318198	341509	325165	318167	318129	453448	453059
1.0 m	318921	320672	320740	318952	338455	318969	318945	318938	453455	453066
1.5 m	336628	338370	338387	338394		338424	338417	338400	453462	453073
2.0 m	318976	320689	320757	319300	338288	319744	318990	318983	453479	453080
3.0 m	319768	320696	320764	319799	338295	319805	319782	319775	453486	453097
5.0 m	319812	320702	320771	319843	338301	319850	319836	319829	453493	453103
7.5 m	319867	320719	320788	319898	338318	319966	319881	319874	453509	453110
10.0 m	325950	345064	345378	325967	345385	325974	325943	325936		
15.0 m	319973	320726	320795	320603	338325	320610	319997	319980	453516	453127
20.0 m	345033	348188	345040	325998	345057	325981	326001	326018		
30.0 m	320627	320733	320801	320658	338332	320665	320641	320634	453530	453141
Cat5e F/UTP										
0.25 m	451307	451901	347440	451406	452007	451604	451703	451505		
0.5 m	329880	321998	331821	331845	313056	331814	331791	331838	453318	452922
1.0 m	329897	313883	330336	331869	313063	331890	331876	331852	453325	452939
2.0 m	329903	313377	331906	331944	313070	331937	331951	331913	453332	452946
3.0 m	329910	313384	330350	331982	313087	331975	332408	331968	453349	452953
5.0 m	329927	313001	330367	332019	313094	332033	332002	332026	453356	452960
7.5 m	329934	313018	335836	332064	313100	332385	332057	332040	453363	452977
10.0 m	329941	313025	330398	332088	313117	332101	332095	332071	453370	452984
15.0 m	329958		336666	332125		332392	332415	332118	453387	452991
20.0 m	329965	313032	331524	332545	313124	332569	332552	332132	453394	453004
30.0 m	329972									
Cat5e SF/UTP										
0.5 m	329989		320368	329996		330466	330442	330459	453579	453189
1.0 m	330473		320375	330480		330510	330497	330503	453585	453196
1.5 m	330527		335645	330534		330565	330541	330558	453592	453202
2.0 m	330572		320399	330589		330619	330596	330602	453608	453219
3.0 m	330626		320405	330633		330664	330640	330657	453615	453226
5.0 m	330671		336673	330688		330718	330695	330701	453622	453233
7.5 m	330831		320429	330848		330725	330855	330862	453639	453240
10.0 m	330732		337212	330749		330770	330756	330763	453646	453257
15.0 m	330787		320443	330794		330824	330800	330817	453653	453264
20.0 m	342636								453660	453271
30.0 m	342636								453660	453271
Cat6 U/UTP										
0.5 m	340427	341936	342032	342131	342230	342339	342469	342568	393119	392754
1.0 m	340373	341943	342049	342148	342247	342346	342476	342575	393126	392761
1.5 m	340380	341950	342056	342155	342254	342353	342483	342582	393133	392778
2.0 m	334112	341967	342063	342162	342261	342360	342490	342599	393140	392785
3.0 m	334129	341974	342070	342179	342278	342377	342506	342605	393157	392792
5.0 m	336765	343732	343350	343367	343749	343725	343718	343305	393164	392808
7.5 m	336758	341998	342094	342193	342292	342391	342520	342629	393171	392815
10.0 m	336734	343800	343794	343756	343817	343787	343763	343770		
15.0 m	336772	342001	342100	342209	342308	342407	342537	342438	393188	392822
20.0 m	336741	730402	342117	342216		342445	342544	342421		
30.0 m	340557	342025	342124	342223	342322	342452	342551	342414		

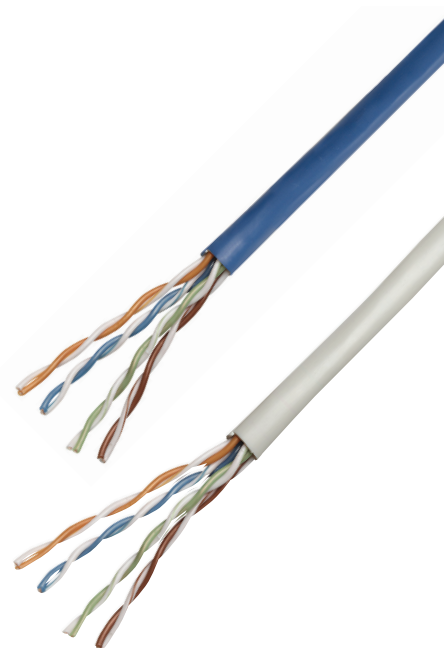


Length	Grey	White	Black	Red	Orange	Yellow	Green	Blue	Purple	Pink	Trans- parent	Brown	Light Brown
Cat6 S/FTP													
0.5 m	341264	344029	344012	343978	344036	344005	343985	343992	392884	393225			
1.0 m	341271	344098	344081	344043	344104	344074	344050	344067	392891				
1.5 m	341288	344166	344159	344111	344173	344142	344128	344135	392907	392648			
2.0 m	341295	344234	344227	344180	344241	344210	344197	344203	392914	392655			
3.0 m	341301	344388	344371	344333	344395	344364	344340	344357	392921	392662			
5.0 m	344562	344586	344579	344524	344593	344555	344531	344548	392938	392679			
7.5 m	341325	344654	344647	344609	344661	344630	344616	344623	392945	392686			
10.0 m	342797	347693	347648	347686	347679	347709	347662	347655		393294			
15.0 m	341332	347761	347716	347754	347747	347778	347730	347723	392952	392693			
20.0 m	342803	313148	330312	330305	313155	330282	330299	330237					
30.0 m	341349	220088	220064	220095	220125	220149	220163	220071					
Cat6a S/FTP													
0.5 m	313162	313391	313841	314367	314886	315333	315715	316019					
1.0 m	313179	313407	313858	314374	314893	315340	315722	316026					
1.5 m	338929	313421	313865	314480	314909	315364	315739	316057					
2.0 m	338585	313414	313872	314497	314916	315371	315746	316064					
3.0 m	321785	313438	313889	314527	314923	315388	315753	316415					
5.0 m	321792	313445	313902	314619	314930	315395	315760	316422					
7.5 m	321822	313452	313919	314626	314947	315401	315777	316439					
Cat6, LSOH, S/STP													
0.25 m	733205	733342	733069	733625	733908	734042	733762	733489	734325	734189	734462		
0.5 m	733212	733359	733076	733632	733915	734059	733779	733496	734332	734196	734479		
1.0 m	733229	733366	733083	733649	733922	734066	733786	733502	734349	734202	734486		
1.5 m	733236	733373	733090	733656	733939	734073	733793	733519	734356	734219	734493		
2.0 m	733243	733380	733106	733663	733946	734080	733809	733526	734363	734226	734509		
3.0 m	733250	733397	733113	733670	733953	734097	733816	733533	734370	734233	734516		
5.0 m	733267	733403	733120	733687	733960	734103	733823	733540	734387	734240	734523		
7.5 m	733274	733410	733137	733694	733977	734110	733830	733557	734394	734257	734530		
10.0 m	733281	733427	733144	733700	733984	734127	733847	733564	734400	734264	734547		
15.0 m	733298	733434	733151	733717	733991	734134	733854	733571	734417	734271	734554		
20.0 m	733304	733441	733168	733724	734004	734141	733861	733588	734424	734288	734561		
25.0 m	733311	733458	733175	733731	734011	734158	733878	733595	734431	734295	734578		
30.0 m	733328	733465	733182	733748	734028	734165	733885	733601	734448	734301	734585		
50.0 m	733335	733472	733199	733755	734035	734172	733892	733618	734455	734318	734592		
Cat6, U/UTP Flat													
0.5 m		603102	603133									634915	603171
1.0 m		603201	604208									634922	604246
1.5 m		603195	603126									634793	634588
2.0 m		604260	603164									634823	634618
3.0 m		603188	622082									634809	634632
5.0 m		604253	603119									634816	634656
7.0 m		603225	603157									634700	634670
10.0 m		600226	600040									623773	634687
15.0 m		603218	601022									636599	634755
20.0 m		604277	604215									635202	634878

Shielding	Color	Type	Length	AWG	Barcode
Installation Cable Cat7 1000 AWG23 Flame-Retardant Non-Corrosive (FRNC-B)					
S/FTP	Orange	Simplex	100 m	23	993883
S/FTP	Orange	Simplex	500 m	23	993890
S/FTP	Orange	Simplex	1000 m	23	993906
S/FTP	Orange	Duplex	100 m	23	993913
S/FTP	Orange	Duplex	500 m	23	993920



Wire	Shielding	Color	Length	AWG	Barcode
Cat5e					
Solid	UTP	Grey	305 m	24	362320
Solid	UTP	Blue	305 m	24	327749
Solid	FTP	Grey	305 m	24	518130
Solid	UTP	Grey	305 m	24	325899
Solid	UTP	White	305 m	24	333078
Solid	FTP	Grey	305 m	26	337892
Solid	UTP	Grey	305 m	24	326032
Cat6					
Solid	SFTP	Grey	305 m	23	341165
Solid	UTP	Grey	305 m	23	334136
Litzendraht	UTP	Grey	305 m	24	334143
Cat6 SOHO					
Solid	UTP	Black	305 m	23	704656
Solid	UTP	Grey	305 m	23	704663



502399



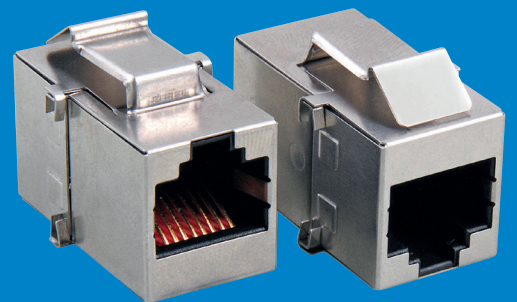
790055



Category	Cable Type	Content	Packaging	Description	Barcode
RJ45 Modular Plug					
Cat5e	For Round Cable	100 Plugs	Jar	15µ Gold Plated	502399
Cat5e	For Round Cable	100 Plugs	Jar	15µ Gold Plated	790055
Cat6	For Round Cable	100 Plugs	Jar	15µ Gold Plated	502344

RJ45 Accessories

RJ45 Accessories	49
Keystones	50
Consolidation Box	51
Data Outlets	52
Cover Plates	53
Installation Sections/Tools	54
Testers	55



Cat6 Connecting Module 250MHz

with IDC - terminal

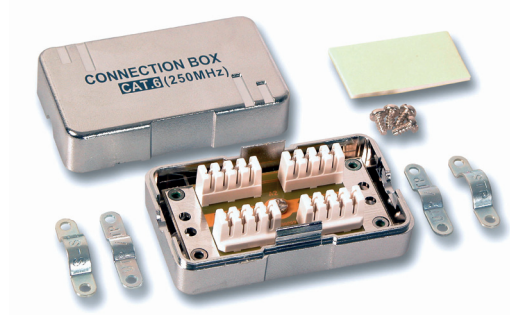
Features

- Type: Cat6 up to 250 MHz with LSA terminals

Specifications

- Cat6 up to 250 MHz with LSA terminals
- The connecting module can be used to extend installation cables or reconnect damaged cables without having to re-run a complete cable segment.
- With adhesive tapes for fixing screw-type strain relief
- Cable entry up to 7.5mm

Barcode: 993869



Cat6+ Connecting Module 600MHz

with IDC - terminal

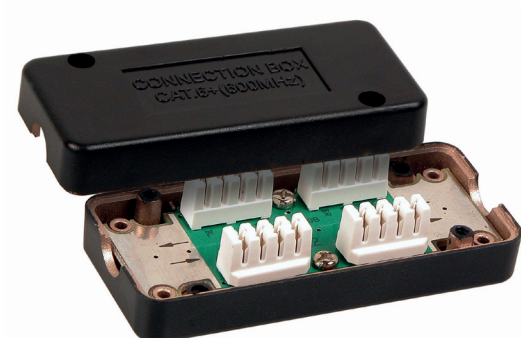
Features

- Type: Cat7 up to 600 MHz with LSA terminals

Specifications

- The connection module can be used to extend installation cables or reconnect damaged cables without having to re-run a complete cable segment.
- The two cable ends are connected with LSA insulation displacement terminals. All standard 4- or 8-core installation cables from AWG 26-22 can be worked to a sheath diameter of 10mm.

Barcode: 993876



Cat5e Modular Inline Coupler

- Used to extend the length of shielded Cat5e cables
- 50-micron gold-plated contacts
- Cat5e performance is in compliance with ANSI/TIA/EIA 568 B.2 standard

Barcode: 504768



2-Port Modular Distributor

- Allows 2 RJ45 ports to share 1 Cat5 shielded network cable
- Used in pairs (1 modular distributor on each end of the network cable)
- Requires a coupler (female to female) for connection on each end of the network cable

Barcode: 504195



T-Modular Adapter, RJ45 Jack/2 x Jack

- 1:1, shielded

Specifications

- ET-AT 8/8
- Metal housing
- Jack / 2 x jack 1:1 wired
- 8 pin assignments
- Also suitable for ISDN applications

Barcode: 993845



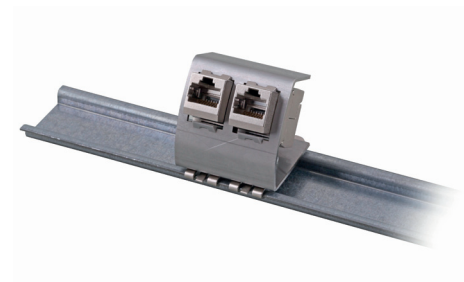
DIN-Rail Adapter for Keystone

- Type: DIN-Rail adapter for 1 Keystone module

Specifications

- For carrying Keystone modules
- Delivery without Keystone modules

Barcode: 993319



Frame Set, 2, RAL 9010

- RJ45 Module 993326

Features

- RAL 9010 (white)

Specifications

- For 2 Keystone Jacks 993326
- The frame covers are snapped on after installation and included in delivery.

Barcode: 993852



Frame Set 2-Fold

- For DCOC/DCVC10001, RAL 9010

Features

- Frame set 2x
- Color: RAL 9010, (pure white)

Specifications

- For carrying 2 Keystone modules
- Frame set with cover 80 x 80mm and cover 50 x 50mm
- With dust covers, delivery without modules

Barcode: 993333



Consolidation Point CP-Box

for RJ45 Module 993326

Features

- Dimensions (W x D x H): 115 x 266 x 40mm
- Type: 4 x RJ45 module

Specifications

- Consolidation Point Box
- For 4, 8 or 24 Keystone
- Grounding bolt
- Hinged cover

Barcode: 994040 4 x RJ45 Module 993326

Barcode: 994057 8 x RJ45 Module 993326

Barcode: 994064 24 x RJ45 Module 993326

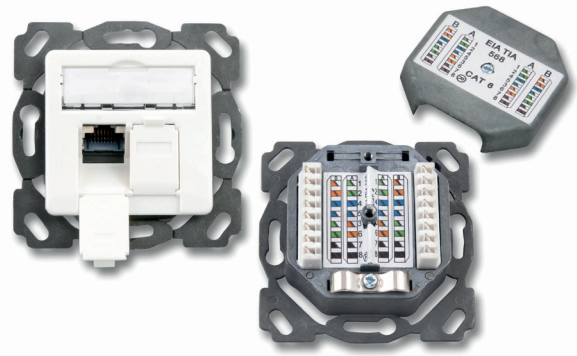


	Category	Shielding	Housing	Details	Barcode
	No certification	No/UTP	Plastic	RJ45 Jack/Jack, Unshielded, 1:1 wired	993623
	No certification	Yes/STP	Plastic	Keystone	993814
	No certification	Yes/STP	High-Grade Steel	Keystone	993821
	Cat5e	No/UTP		50-micron gold-plated contacts, Keystone	504775
	Cat5e	Yes/STP		For use in modular distribution panels up to 24 ports, frame sets 1/2/3-port and KDO housing, Keystone	994002
	Cat5e	Yes/FTP		50-micron gold-plated contacts, Keystone	512008
	Cat6	No/UTP	Plastic	Cat6, certified in accordance with ISO, 11801 2nd Edition 2002, RJ45 module UTP for AWG24/1, AWG22/1, toolless assembly - no LSA tool required, TIA/EIA 568A/B coded	994026
	Cat6	No/UTP		Keystone	993678
	Cat6	Yes/STP	Metal		993661
	Cat6	Yes/STP	Die-Cast	For AWG22/1, AWG24/1, no LSA tool necessary, for installation in modular distribution panels up to 24-port/1U and 1-2-/3-port conn. sockets TIA/EIA568B coded strain relief via cable tie Instruction Cat6 component certified (Delta) ET-25085/87/89 Cat6 link-certified	994019
	Cat6	Yes/STP		90° angled to downside	993654
	Cat6	Yes/STP	Metal	Keystone	993647
	Cat6	Yes/STP	Die-Cast	For AWG22/1, AWG24/1, no LSA tool necessary for installation in modular distribution panels up to 24-port/1U and 1-2-/3-port conn. sockets TIA/EIA568B coded strain relief via cable tie Cat6 component certified (Delta) ET-25085/87/89 Cat6 link-certified	994019

Barcode	Category	Color	Connection	De-Embedded
994095	Cat6	RAL 9010, white	Top/Bottom	Yes
994101	Cat6	RAL 1013, white	Top/Bottom	Yes
994118	Cat6	RAL 9010, white	Right/Left	Yes
994125	Cat6	RAL 1013, white	Right/Left	Yes
994170	Cat6a	RAL 1013, white	Top/Bottom	
994187	Cat6a	RAL 9010, white	Top/Bottom	
994194	Cat6a	RAL 9010, white	Right/Left	
994200	Cat6a	RAL 1013, white	Right/Left	

All Data Outlets

- Type: 2-port flush
- 40° outlet
- LSA IDC terminals
- 6.3mm ground connection
- Fully shielded diecast housing
- Labeling field with transparent cover
- Central plate conforms to DIN 49075
- Designs compatible with all common switch programs



Barcode	Category	Color	Connection	Type	Class
994071	Cat5e	RAL 1013, pure white	Right/Left	2-Port Flush Mount	
994088	Cat5e	RAL 9010, pure white	Right/Left	2-Port Flush Mount	
994132	Cat6	RAL 1013, pure white	Top/Bottom	2-Port Flush Mount	Class E (250 MHz) acc. to ISO/IEC11801 and EN50173
994149	Cat6	RAL 1013, pure white	Right/Left	2-Port Flush Mount	Class E (250 MHz) acc. to ISO/IEC11801 and EN50173
994156	Cat6	RAL 9010, pure white	Top/Bottom	2-Port Flush Mount	Class E (250 MHz) acc. to ISO/IEC11801 and EN50173
994163	Cat6	RAL 9010, pure white	Right/Left	2-Port Flush Mount	Class E (250 MHz) acc. to ISO/IEC11801 and EN50173

All Data Outlets

- Type: 2-port flush
- 40° outlet
- LSA IDC terminals
- 6.3mm ground connection
- Labeling field with transparent cover
- Central plate 50 x 50mm including cover plate 80 x 80mm
- Designs compatible with all common switch programs



Cover Plate RAL 1013 White

- Dimensions: 80 x 80mm
- Color: RAL 1013 (white)

Specifications

- Dimensions: 80 x 80mm
- Surface-type outlets (AP) and flush-type outlets (UP) can be combined from the installation duct types (UPEK) and cover plate and surface frame

Barcode: 993937



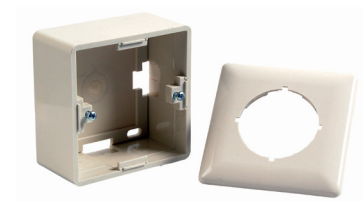
Surface-Mounting Frame RA L1013 White

- Dimensions: 80 x 80 x 40mm
- Color: RAL 1013 (white)

Specifications

- Surface-mounting outlets can be combined with the flush-type outlets or the installation duct types

Barcode: 993951



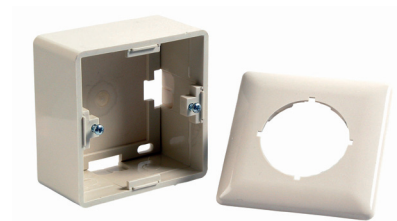
Cover Plate RAL 9010 White

- RJ45 jack/ 90°, 1:1
- Dimensions: 80 x 80mm
- Color: RAL 9010 (white)

Specifications

- Surface-type outlets (AP) and flush-type outlets (UP) can be combined with the installation duct types (UPEK) and cover plate and surface frame

Barcode: 993944



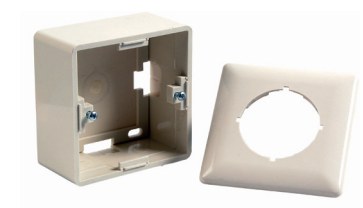
Surface-Mounting Frame RAL 9010 White

- Dimensions: 80 x 80 x 40mm
- Color: RAL 9010 (white)

Specifications

- Surface-type outlets (AP) and flush-type outlets (UP) can be combined with the installation duct types (UPEK) and cover plate and surface frame

Barcode: 993968



Cat5e Installation Segment

- Type: cable drum

Specifications

- Robust special rubber cable drum, complete with FTP Cat5e installation cable, integrated outlet 1 x RJ45 with dust cap and 1 RJ45 modular jack
- Very well suited to mobile use, for exhibitions, presentations, outside broadcasting vans, measuring segment, etc.
- A standardized installation segment in accordance with structured cabling Cat5e

Barcode: 993982 50m

Barcode: 993999 90m



Cat6a/Class EA Installation Segment

- 90 m on cable drum

Specifications

- Robust special rubber cable drum, complete with Cat7 S/FTP installation cable, integrated outlet Cat6a RJ45 with dust cap
- Very well suited to mobile use, for exhibitions, presentations, outside broadcasting vans, measuring segments etc.
- A standardized installation section in accordance with structured cabling Class EA/Cat6a

Barcode: 994033



Universal Modular Plug Crimping Tool

- All-in-one professional modular crimping tool with cutting and stripping functions
- Crimps RJ45, RJ12 and RJ11 modular plugs
- Cuts and strips both round and flat cable
- Durable plastic handle
- Ratchet type to control the tension of the tool; needs less strength; easy to operate
- High-quality hardened steel with black-oxide finish resists rusting

General

- Crimps the following types of modular plugs: RJ45/8P8C; RJ12/6P6C; RJ11/6P4C, 6P2C, 4P4C, 4P2C
- SK5 blade

Dimensions

- Length: 215mm (8.5 in.)
- Weight: 358 g (12.6 oz.)

Barcode: 211048



Multifunction Cable Tester

- RJ45/RJ11
- Tests RJ11 and RJ45
- Cable type: UTP/STP/FTP

Specifications

- Weight: 0.185 kg (0.4 lbs.)
- Color: beige and grey

Barcode: 351898



4-in-1 Cable Tester

RJ11, RJ45, USB and BNC

- Tests 4 types of cables: RJ11/45/USB/BNC
- Simple 1-button test
- Tests patch cables and installed wiring
- 600-ft. test distance
- LEDs indicate connections and faults
- Tests shielded and unshielded LAN cable
- Simple 1-button test

Barcode: 351911



LANSmart Network Tester

- with LCD display, TDR technology
- Handy high-tech measuring for network professionals
- Technology: time-domain reflectometer-based
- Cable length measurement possible without remote unit
- RJ45 patch cable or raw cable measurable
- Detects pinning, pair assignment, short-cuts
- Port finder function: LANSmart makes the link LED of the hub/switch/MC/NIC light up

- Master and remote unit RJ45, pluggable
- LCD display: 122 x 32 dot matrix 56mm x 29mm
- Measuring accuracy: Below 10 m +/-2 m, above 10 m +/-5%
- Length measuring range: min.: 1 m; max.: 500 m
- Tone generator: 1 kHz
- Dimensions: 82 x 138 x 32mm, 220 g
- Power supply: 4.5 VDC (3 AAA micro) (not included)
- CE tested

Barcode: 993524



LANTester Network & Modular

- Type: LANTester network & modular cable, RJ11/12/45

Specifications

- LAN test kit, master and remote unit network and modular test cable, RJ11/12/45 local or remote connections can be tested
- Separate LED for Pins 1 - 8 and ground
- Each individual core is automatically scanned
- Scan speed low/high, adjustable
- Incl. black plastic case
- Battery 9 V E-block, not included

Barcode: 993531



Copper and Fiber Optics Cable Certifier

Specifications

- For precise standard, compliant certification of structured cabling systems with a frequency range of 1 to 1600 MHz.
- Standards: ISO/IEC11801, Cenelec EN50173 and TIA568
- TP-cable certification 1 to 1600 MHz for:
 - C / D / E / E_A_ / F / F_A_ / & Cat3 / 5e / 6 / 6a / 7 / 7a
- Operating concept: dual-control system (DCSTM) with 2 identical handsets
- High precision, exceeds Level IV
- Professional documentation generator
- Impact-proof case, fall and shock-proof design, long battery life
- Full fiber certification form and SM
- Optional WireXpert Fiber Adapters offer full certification testing for multimode and single-mode fiber installations. Dual wavelength end-to-end testing is supported for both SM and mm fibers.
- Power supply
- Removable / rechargeable Li-ion battery provides about 8 hours of continuous operation
- External power adapter: 100 240 V AC, plugs into the power jack of the unit

- Dimensions: 232 x 126 x 86.7mm; weight ca. 1.4 kg
- Memory: more than 500 Mbyte (more than 2000 test results) of internal flash memory
- USB flash driver (1 GB included, 32 GB max.) allows for flexible test record storage
- Connectivity:
 - Probe interface connector
 - Ethernet port, RJ45, for remote control
 - USB host and device interfaces
 - Talkset interface: 3.5mm stereo jack
- Scope of delivery: 2 x measuring unit with Dual Control System DCS, incl Li-ion battery, power supply, carrying bag, calibration certificate and software ReportXpert
- 2 Class EA channel adapter (1 pair)
- 2 Class EA permanent-link adapter (1 pair)
- 2 talking set (1 pair)
- 1 USB stick



Barcode: 993357

Net Toner and Probe Kit

- Tests datacom, telecom, security, video and audio networks
- 2 position switch for single or multi-tone signal
- LEDs for line polarity, continuity and voltage
- Enhanced talk battery mode provides power for voice communications over inactive pairs
- Testing leads and modular cables for individual wire tests or modular jack tests
- Replaceable plastic tip to prevent accidental shorts
- Trace or identify wire or cables in a bundle or group
- Alligator clips, RJ45 jack, RJ12 plug, optional F-connector
- Lifetime Warranty

Net Toner

- Toner frequency: high alternating

- 500-781 Hz; low alternating 446-657 Hz
- Talk battery: 9V into a 600-ohm circuit
- Voltage protection: 50 VDC or 24 VAC
- Battery: 9V DC standard or alkaline
- CE approved: EN 55022 Class B for ITE and EN 55024
- Size: 125 (L) x 68 (W) x 26 (H)mm (4.9 x 2.7 x 1.2 in.)
- Weight: 120 g (0.37 lbs)

Net Probe

- Gain: 30 dB
- Tip resistance: 30 ohms (plastic tip)
- Battery: 9V DC standard or alkaline
- CE Approved: EN 55022 Class B for ITE and EN 55024
- Size: 210 (L) x 40 (W) x 28 (H)mm (8.1 x 1.6 x 1 in.)
- Weight: 140 g (0.30 lbs)

Package Contents

- Net Probe, Net Toner w/ Alligator clips and RJ12 connector, female F-connector to RJ45 adapter, carrying pouch, user manual



Barcode: 515566

LSA+ Impact Tool

- For the installation of network cabling and wall plates with LSA+ connections
- Metal
- Carrying case included

Barcode: 604369



PG16 Cable Glands Conical

- Grey RAL 7035
- Type: cable gland PG16, PVC, incl. PVC nuts

Barcode: 993340



Screw with M2x8 Nut, Galvanized

- Carton quantity: 100
- Set consisting of
 - DIN 934-8 VZ M2 bolt
 - M2x8 nut

Barcode: 993838



Self-Tapping Screw 2.5

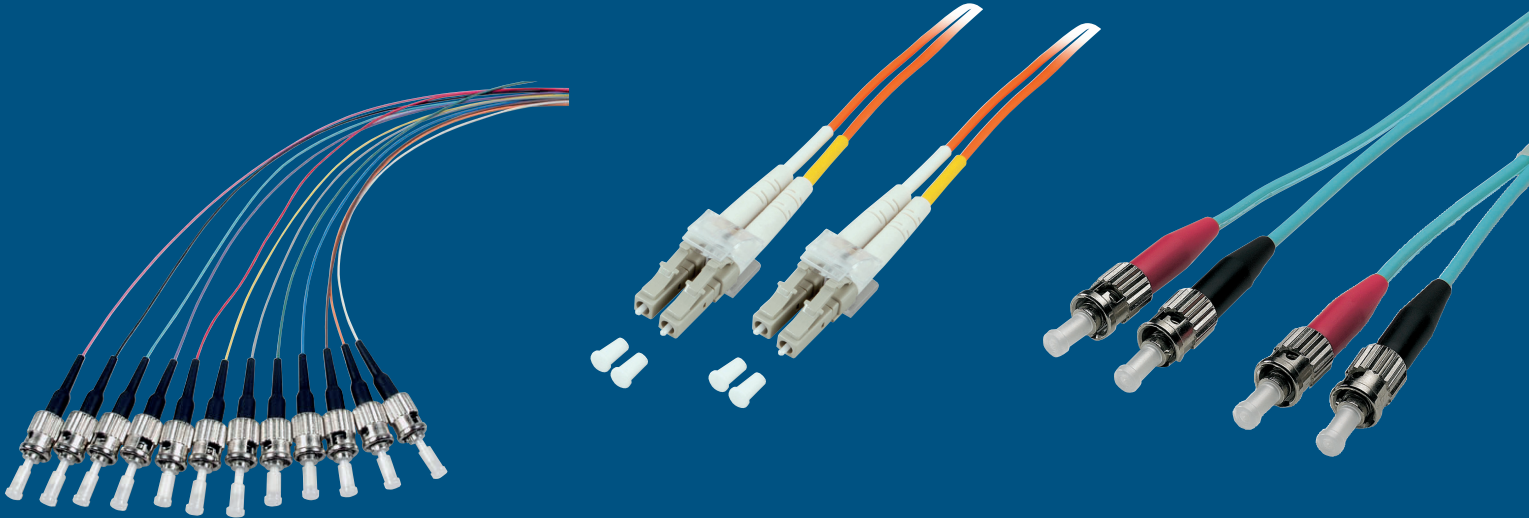
- Similar to DIN7971
- Carton quantity: 100

Barcode: 993975



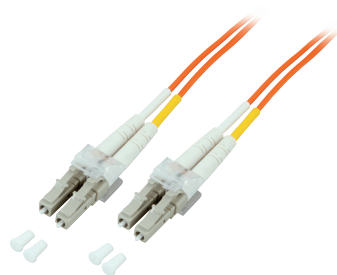
Fiber Optic Cable

- Fiber Optic Cable 50/125µm Multimode . . .59
- Fiber Optic Cable 62.5/125µm Multimode .60
- Fiber Optic Cable 9/125µm Single Mode,
Fiber Pigtail61

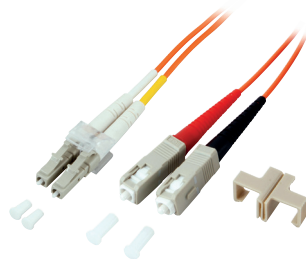


Length	OM2 Orange	OM3 Aqua	OM4 Violet
Duplex Jumper LC/LC 50/125µm			
0.5 m	990011	990103	990196
1 m	990028	990110	990202
2 m	990059	990141	990233
3 m	990073	990165	990257
5 m	990080	990172	990264
7.5 m	990097	990189	990271
10 m	990035	990127	990219
15 m	990042	990134	990226
20 m	990066	990158	990240
Duplex Jumper LC/SC 50/125µm			
0.5 m	990578	990486	990578
1 m	990585	990493	990585
2 m	990615	990523	990615
3 m	990639	990547	990639
5 m	990646	990554	990646
7.5 m	990653	990561	990653
10 m	990592	990509	990592
15 m	990608	990516	990608
20 m	990622	990530	990622
Duplex Jumper LC/ST 50/125µm			
0.5 m	991025	990936	991117
1 m	991032	990943	991124
2 m	991063	990974	991162
3 m	991087	990998	991186
5 m	991094	991001	991193
7.5 m	991100	991018	991209
10 m	991049	990950	991131
15 m	991056	990967	991148
20 m	991070	990981	991179

Length	OM2 Orange	OM3 Aqua	OM4 Violet
Duplex Jumper SC/SC 50/125µm			
0.5 m	991483	991575	991391
1 m	991490	991582	991407
2 m	991520	991612	991438
3 m	991544	991636	991452
5 m	991551	991643	991469
7.5 m	991568	991650	991476
10 m	991506	991599	991414
15 m	991513	991605	991421
20 m	991537	991629	991445
Duplex Jumper SC/ST 50/125µm			
0.5 m	992008	991926	991834
1 m	992015	991933	991841
2 m	992046	991964	991872
3 m	992060	991988	991896
5 m	992077	991995	991902
7.5 m	992084	992017	991919
10 m	992022	991940	991858
15 m	992039	991957	991865
20 m	992053	991971	991889
Duplex Jumper ST/ST 50/125µm			
0.5 m	992534	992442	992275
1 m	992367	992459	992282
2 m	992398	992480	992312
3 m	992411	992503	992336
5 m	992428	992510	992343
7.5 m	992435	992527	992350
10 m	992374	992466	992299
15 m	992381	992473	992305
20 m	992404	992497	992329



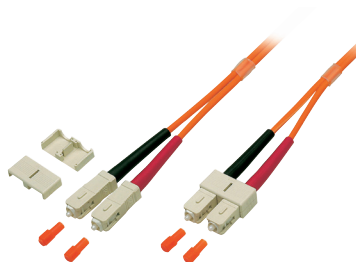
Duplex Jumper LC/LC 50/125µm



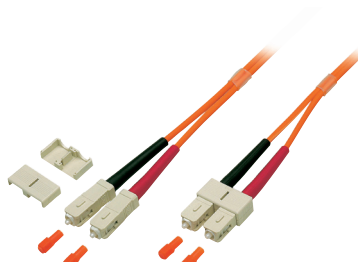
Duplex Jumper LC/SC 50/125µm



Duplex Jumper LC/ST 50/125µm



Duplex Jumper SC/SC 50/125µm

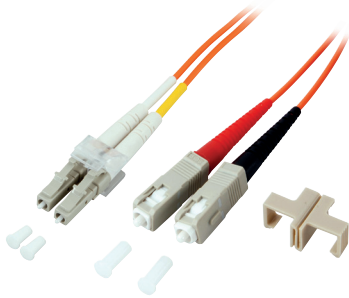
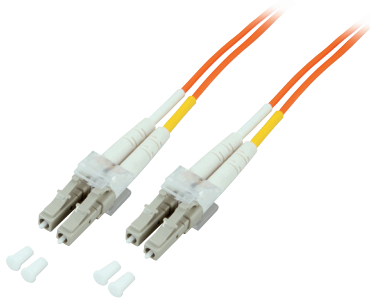


Duplex Jumper SC/ST 50/125µm

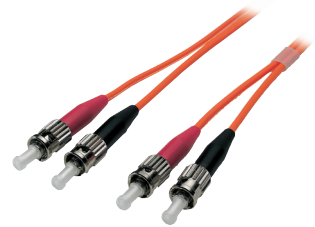
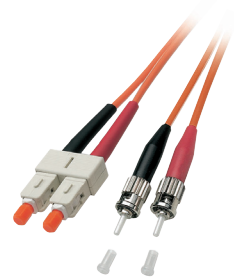
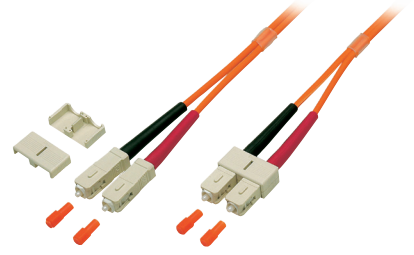


Duplex Jumper ST/ST 50/125µm

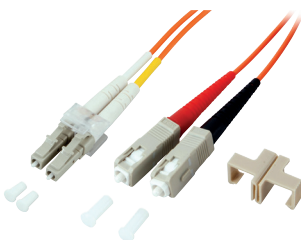
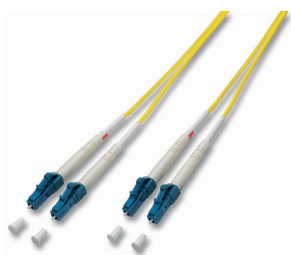
Length	OM1 Orange
Duplex Jumper LC/LC 62.5/125µm	
0.5 m	990288
1 m	990295
2 m	990325
3 m	990349
5 m	990356
7.5 m	990363
10 m	990301
15 m	990318
20 m	990332
Duplex Jumper LC/SC 62.5/125µm	
0.5 m	990752
1 m	990769
2 m	990790
3 m	990813
5 m	990820
7.5 m	990837
10 m	990776
15 m	990783
20 m	990806
Duplex Jumper LC/ST 62.5/125µm	
0.5 m	991216
1 m	991223
2 m	991254
3 m	991278
5 m	991285
7.5 m	991292
10 m	991230
15 m	991247
20 m	991261



Length	OM1 Orange
Duplex Jumper SC/SC 62.5/125µm	
0.5 m	991667
1 m	991674
2 m	991704
3 m	991728
5 m	991735
7.5 m	
10 m	991681
15 m	991698
20 m	991711
Duplex Jumper ST/SC 62.5/125µm	
0.5 m	992091
1 m	992107
2 m	992138
3 m	992152
5 m	992169
7.5 m	992176
10 m	992114
15 m	992121
20 m	992145
Duplex Jumper ST/ST 62.5/125µm	
0.5 m	992541
1 m	992558
2 m	992589
3 m	992602
5 m	992619
7.5 m	992626
10 m	992565
15 m	992572
20 m	992596



Length	OS2 Orange
Duplex Jumper LC/LC 9/125µm	
0.5 m	990387
1 m	990394
2 m	990431
3 m	990455
5 m	990462
7.5 m	990479
10 m	990417
15 m	990424
20 m	990448
Duplex Jumper LC/SC 9/125µm	
0.5 m	990844
1 m	990851
2 m	990882
3 m	990905
5 m	990912
7.5 m	990929
10 m	990868
15 m	990875
20 m	990899
Duplex Jumper LC/ST 9/125µm	
0.5 m	991308
1 m	991315
2 m	991346
3 m	991360
5 m	991377
7.5 m	991384
10 m	991322
15 m	991339
20 m	991353

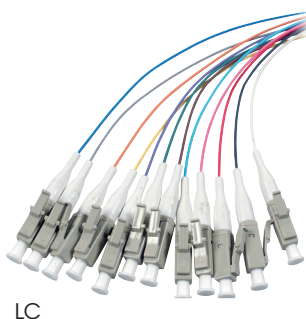


Length	OS2 Orange
Duplex Jumper SC/SC 9/125µm	
0.5 m	991742
1 m	991759
2 m	991780
3 m	991803
5 m	991810
7.5 m	991827
10 m	991766
15 m	991773
20 m	991797
Duplex Jumper ST/SC 9/125µm	
0.5 m	992183
1 m	992190
2 m	992220
3 m	992244
5 m	992251
7.5 m	992268
10 m	992206
15 m	992213
20 m	992237
Duplex Jumper ST/ST 9/125µm	
0.5 m	992633
1 m	992640
2 m	992671
3 m	992695
5 m	992701
7.5 m	992718
10 m	992657
15 m	992664
20 m	992688

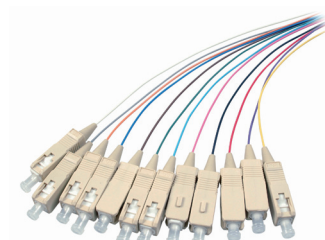


Fiber Pigtail, 2 m, Single Mode/Multimode

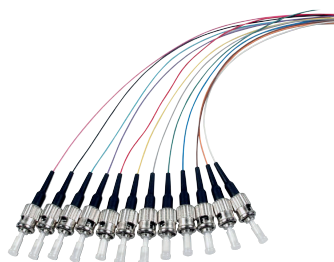
Quality	Plug	Fiber	Barcode
OS2	ST-II	9/125µm	992725
OM3	LC	50/125µm	992732
OM3+OM4	LC	50/125µm	992749
OM2	LC	50/125µm	992756
OM1	LC	62.5/125µm	992763
OS2	LC	9/125µm	992770
OS2	LC-APC	9/125µm	992787
OM2	SC	50/125µm	992794
OM3	SC	50/125µm	992800
OM4	SC	50/125µm	992817
OM1	SC	62.5/125µm	992824
OS2	SC	9/125µm	992831
OM3	ST	50/125µm	992848
OM3	ST	50/125µm	992855
OM4	ST	50/125µm	992862
OM1	ST	62.5/125µm	992879



LC



SC



Fiber Optic Accessories

Splice Boxes with Sliding Units	63
Splice Boxes	63
Splice Box Accessories.	65
Couplers	66
Couplers, Distribution Plates, Dust Covers . .	68
Fiber Optic Tools	69



Intellinet Rack Finder:
www.ic-intracom.com/rackfinder

	Connectors	Height	Color	Mountable Splice Cassettes	Barcode
	12SC, E2000 Simplex, MTRJ, LC Duplex	1 U	RAL 7035 Light Grey	Max. 4	992930
	12SC, E2000 Simplex, MTRJ, LC Duplex	1 U	RAL 7021 Black/Grey	Max. 4	992947
	24SC, E2000 Simplex, MTRJ, LC Duplex	1 U	RAL 7035 Light Grey	Max. 4	993067
	24SC, E2000 Simplex, MTRJ, LC Duplex	1 U	RAL 7021 Black/Grey	Max. 4	993074
	12SC Duplex Vertical	1 U	RAL 7035 Light Grey	Max. 4	992954
	12SC Duplex Vertical	1 U	RAL 7021 Black/Grey	Max. 4	992961
	24SC Duplex Vertical	1 U	RAL 7035 Light Grey	Max. 4	993081
	24SC Duplex Vertical	1 U	RAL 7021 Black/Grey	Max. 4	993098
	24SC Duplex Vertical	2 U	RAL 7035 Light Grey	Max. 10	993050
	48SC Duplex Vertical	2 U	RAL 7035 Light Grey	Max. 10	993197
	12ST, FC (D-hole)	1 U	RAL 7035 Light Grey	Max. 4	993012
	12ST, FC (D-hole)	1 U	RAL 9005 Black	Max. 4	993029
	24ST, FC (D-hole)	1 U	RAL 7035 Light Grey	Max. 4	993142
	24ST, FC (D-hole)	1 U	RAL 7021 Black/Grey	Max. 4	993159
	48LC Duplex	2 U	RAL 7035 Light Grey	Max. 10	993180

All Splice Boxes

- Unassembled
- 6 self-adhesive fiber trays
- Sliding unit
- Front panel/sliding with quick-lock
- Depth adjustable
- Cable entry backsided
- Prepared for PG16/M20
- Width: 438mm
- Depth: 244mm

	Connectors	Height	Color	Mountable Splice Cassettes	Barcode
	12 SC, E2000 Simplex, MTRJ, LC Duplex	1 U	RAL 7035 Light Grey	Max. 4	992992
	12 SC, E2000 Simplex, MTRJ, LC Duplex	1 U	RAL 7021 Black/Grey	Max. 4	993005
	24 SC, E2000 Simplex, MTRJ, LC Duplex	1 U	RAL 7035 Light Grey	Max. 4	993128
	24 SC, E2000 Simplex, MTRJ, LC Duplex	1 U	RAL 7021 Black/Grey	Max. 4	993135
	12 SC Duplex Vertical	1 U	RAL 7035 Light Grey	Max. 4	992985
	12 SC Duplex Vertical	1 U	RAL 7021 Black/Grey	Max. 4	992978
	24 SC Duplex Vertical	1 U	RAL 7035 Light Grey	Max. 4	993111
	24 SC Duplex Vertical	1 U	RAL 7021 Black/Grey	Max. 4	993104
	72 SC Duplex	3 U	RAL 7035 Light Grey	Max. 12	993203
	12 ST, FC (D-hole)	1 U	RAL 7035 Light Grey	Max. 4	993036
	12 ST, FC (D-hole)	1 U	RAL 7021 Black/Grey	Max. 4	993043
	24 ST, FC (D-hole)	1 U	RAL 7035 Light Grey	Max. 4	993166
	24 ST, FC (D-hole)	1 U	RAL 7021 Black/Grey	Max. 4	993173

All Splice Boxes

- Unassembled
- 6x Self-adhesive fiber tray
- Slideless unit
- Front panel screwed
- Depth adjustable
- Cable entry backsided
- Prepared for PG16/M20
- Width: 438mm
- Depth: 244mm

Compact Splice Dist. Set

- Type: Compact splice dist. set, RAL 7035

Specifications

- Housing with lockable swivel lid, 2 keys
- 2 openings with dust-tight strips for incoming and outgoing cables, for fastening with cable ties
- Holders for max. 4 splice cassettes or 1 splice cassette plus 1 distributor plate
- Steel sheet 1.5mm
- Weight: approx. 1 kg

Barcode: 993210

- Dimensions: 150 x 265 x 55mm (W x H x D)
- Scope of supply includes: 1 distributor plate for 12 ST or FC (D-hole) adapters and 1 distributor plate for 6 SC duplex or 6 LC quad adapters



Spliceholder for 12 Arc Splices

- Type: Splice holder for 12 arc splices crimp

Specifications

- Splice holder for 12 fusion splices

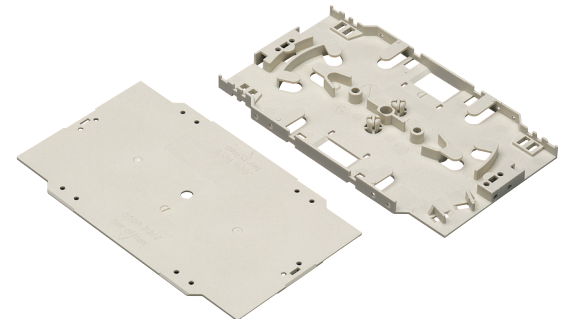
Barcode: 993227



Splice Cassette, White

- For 2 x 12 splice holders (max. 24 arc splices)
- Stackable
- Dimensions: 155 x 8 x 92mm (W x H x D)

Barcode: 993234



Splice Cassette Cover, White

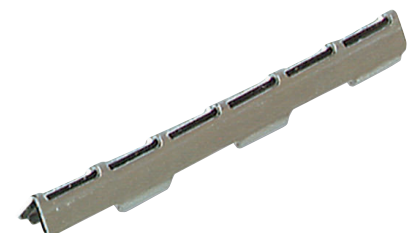
- Cover for 993234

Barcode: 993241

Crimp Splice Protector

- Type: crimp splice protector for arc splices

Barcode: 993258



Adapter LC Quad Multimode

- OM4, ceramic sleeve, violet
- Type: multimode OM4
- Housing: violet
- Sleeve: ceramic

Specifications

- Breakout SC duplex hole
- With snap-in fixing

Barcode: 993364



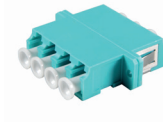
Adapter LC Quad Multimode

- Plastic housing
- Type: multimode OM2
- Housing: beige
- Sleeve: metal

Specifications

- Breakout SC duplex hole
- With snap-in fixing

Barcode: 993371



Adapter LC Quad Multimode

- OM3/OM4, ceramic sleeve, aqua
- Type: multimode OM3
- Housing: aqua
- Sleeve: ceramic

Specifications

- Breakout SC duplex hole
- With snap-in fixing

Barcode: 993388



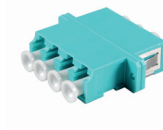
Adapter LC Quad Single Mode

- Plastic housing: SC-duplex, blue
- Type: single mode
- Housing: blue
- Sleeve: ceramic

Specifications

- Breakout SC duplex hole
- With snap-in fixing

Barcode: 993395



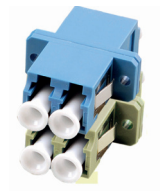
Adapter LC Duplex Multimode

- Housing: SC simplex, metal sleeve
- Type: multimode OM2
- Housing: beige
- Sleeve: metal

Specifications

- Breakout SC simplex hole
- With snap-in fixing

Barcode: 993401



Adapter LC Duplex OM3

- Ceramic sleeve, aqua, (SC simplex)
- Type: multimode OM3
- Housing: aqua
- Sleeve: ceramic

Specifications

- Breakout SC duplex hole
- With snap-in fixing

Barcode: 993418



Adapter LC Duplex OM4

- Ceramic sleeve, e-vio, (SC simplex)
- Type: multimode OM4
- Housing: violet
- Sleeve: ceramic

Specifications

- Breakout SC duplex hole
- With snap-in fixing

Barcode: 993425



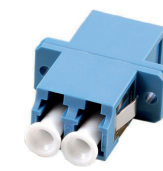
Adapter LC Duplex SM

- Housing: SC simplex, ceramic sleeve
- Type: single mode
- Housing: blue
- Sleeve: ceramic

Specifications

- Breakout SC duplex hole
- With snap-in fixing

Barcode: 993432



Adapter LC-APC Duplex

- Housing: SC simplex, plastic
- Type: single mode APC
- Housing: green
- Sleeve: ceramic

Specifications

- Breakout SC duplex hole
- With snap-in fixing

Barcode: 993449



Adapter SC/SC Duplex

- Ceramic sleeve, multimode
- Type: multimode
- Housing: beige
- Sleeve: ceramic

Specifications

- With snap-in fixing

Barcode: 993456



Adapter SC/SC Duplex

- Ceramic sleeve, SM, blue
- Type: single mode
- Housing: blue
- Sleeve: ceramic

Specifications

- With snap-in fixing

Barcode: 993463



Adapter SC/SC Duplex

- Multimode, aqua, ceramic sleeve
- Type: multimode OM3
- Housing: aqua
- Sleeve: ceramic

Specifications

- With snap-in fixing

Barcode: 993470



Adapter SC Duplex OM4

- Violet, Ceramic sleeve
- Type: multimode OM4
- Housing: violet
- Sleeve: Ceramic

Specifications

- With snap-in fixing

Barcode: 993487



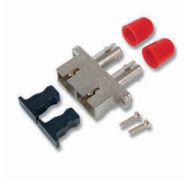
Adapter ST/SC Duplex

- Type: multimode
- Housing: metal
- Sleeve: ceramic

Specifications

- With 2 M2 x 10 screws
- With snap-in fixing

Barcode: 993494



Adapter ST/SC Duplex

- Ceramic sleeve, single mode
- Type: single mode
- Housing: metal
- Sleeve: ceramic

Specifications

- With 2 M2 x 10 screws
- With snap-in fixing

Barcode: 993500



Adapter ST/ST Metal Sleeve

- Multimode
- Type: multimode
- Housing: metal
- Sleeve: metal

Specifications

- Multimode metal sleeve

Barcode: 993517



Dust Cover for E2000 Simplex

- Type: for SC simplex holes
- Plastic, black

Barcode: 992886



Dust Cover for E2000 Simplex

- Type: for SC simplex holes
- Plastic, black

Barcode: 992893



Dust Cover for SC Duplex

- Type: for SC duplex holes
- Plastic, black

Barcode: 992909



Dust Cover for ST

- Type: for ST holes
- Plastic, black

Barcode: 992916



Dust Cover for LC Duplex

- Type: for LC duplex holes
- Plastic, black

Barcode: 992923



Distribution Plate, RAL 7035

- 12 ST or FC (D-hole) adapters

Specifications

- Steel sheet, 1.5mm

Barcode: 993289



Distribution Plate, RAL 7035

- Type: for 6 SC duplex or 6 LC quad adapters

Specifications

- Steel sheet, 1.5mm

Barcode: 993296



Distribution Plate, RAL 7035

- Type: for 6 SC simplex or 6 LC duplex adapters

Specifications

- Steel sheet, 1.5mm

Barcode: 993302



Fiber Checker 3000

- For SM and MM 2.5mm ferrules
- Range: ca. 3 km
- Wavelength (typ.): 655 nm

Specifications

- The compact design of the visual locator is very suitable for daily use in all fiber optic applications; e.g. in the field, in industrial environments and in laboratories
- Suitable to check single mode/multimode optical fibers, fiber optic components on faults and for the patching of fibers
- Operational distance: ca. 3 km

- Suitable 2.5mm ferrule: DIN, E2000, FC, SC, ST
- Temperature: -10°C ~ 45°C (operation), -40°C ~ 70°C (storage)
- Weight: 60 g (incl. batteries)
- Dimensions: 167mm x 12mm
- Included in delivery: dust cap, battery set (2 x AAA), plastic case, instruction manual

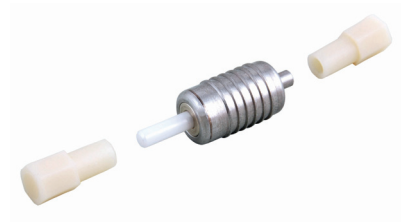


Barcode: 993265

Adapter for Fiber Checker

- Adapts from 2,5mm to 1,25mm
- Adapts Fiber Checker 2.5mm to 1.25mm ferrule. Enables checking of the most popular FO plug types with just 1 Fiber Checker
- Fiber Checker side: 2.5mm ferrule

- Fiber side: 1.25mm connection for LC, MU, F3000 ferrules
- Fiber side (POF adapter): 1.5mm and 2.2mm connection for polymer optical fiber (POF)
- Dust caps for both sides included



Barcode: 993272

Professional Fiber Optic Tool Kit

- This solid tool case made of aluminum contains all that is necessary for daily work with optical fibers. Whether cleaning, stripping or testing a suitable tool is provided in professional quality.
- 1 x aluminium case for fiber optic tools, bare aluminum, dimensions (W x H x D) ca. 345 x 100 x 260mm
- 1 x side cutter RDC 178mm,
- 1 x pliers RLN 216mm
- 1 x Miller stripping tool for 250µm
- 1 x Miller multi-stripping tool 721, for 0.6 - 2.6mm cable
- 1 x fiber checker for single- and multimode for 2.5mm ferrule
- 1 x adapter for 1.25mm ferrule
- 1 x ferrule cleaner ST/SC and FC connectors for 2.5mm ferrule

- 10 x stick cleaner for 2.50mm sleeves
- 10 x stick cleaner for 1.25mm sleeves
- 1 x reel cleaner for fiber optic connectors
- 1 x stripping tool for round cable, 4.5 - 29mm, length - crosswise - rotary
- 1 x kevlar cutter KS-1 140mm
- 1 x stripping tool 0.60 - 1.10mm, for secondary coating stripping
- 1 x stripping tool 0.18 - 0.30mm, for primary coating stripping
- 1 x alcohol dispenser, without contents
- 10 x Miller cleaning sticks with forked head, alcohol soaked
- 25 x Miller cleaning tapes, alcohol soaked



Barcode: 993807

Barcode	Page	Barcode	Page	Barcode	Page	Barcode	Page	Barcode	Page	Barcode	Page	Barcode	Page	Barcode	Page
207157	7	318129	45	329897	45	331968	45	342032	45	344043	46	392792	45	453592	45
211048	54	318143	45	329903	45	331975	45	342049	45	344050	46	392808	45	453608	45
220064	46	318167	45	329910	45	331982	45	342056	45	344067	46	392815	45	453615	45
220071	46	318198	45	329927	45	332002	45	342063	45	344074	46	392822	45	453622	45
220088	46	318228	45	329934	45	332019	45	342070	45	344081	46	392884	46	453639	45
220095	46	318921	45	329941	45	332026	45	342094	45	344098	46	392891	46	453646	45
220125	46	318938	45	329958	45	332033	45	342100	45	344104	46	392907	46	453653	45
220149	46	318945	45	329965	45	332040	45	342117	45	344111	46	392914	46	453660	45
220163	46	318952	45	329972	45	332057	45	342124	45	344128	46	392921	46	453667	45
313001	45	318969	45	329989	45	332064	45	342131	45	344135	46	392938	46	502344	47
313018	45	318976	45	329996	45	332071	45	342148	45	344142	46	392945	46	502399	47
313025	45	318983	45	330237	46	332088	45	342155	45	344159	46	392952	46	502900	29
313032	45	318990	45	330282	46	332095	45	342162	45	344166	46	393119	45	502931	22
313056	45	319300	45	330299	46	332101	45	342179	45	344173	46	393126	45	502931	24
313063	45	319744	45	330305	46	332118	45	342193	45	344180	46	393133	45	504195	49
313070	45	319768	45	330312	46	332125	45	342209	45	344197	46	393140	45	504768	49
313087	45	319775	45	330336	45	332132	45	342216	45	344203	46	393157	45	504775	51
313094	45	319782	45	330350	45	332385	45	342223	45	344210	46	393164	45	506502	30
313100	45	319799	45	330367	45	332392	45	342230	45	344227	46	393171	45	506519	31
313117	45	319805	45	330398	45	332408	45	342247	45	344234	46	393188	45	506533	31
313124	45	319812	45	330442	45	332415	45	342254	45	344241	46	393225	46	512008	51
313148	46	319829	45	330459	45	332545	45	342261	45	344333	46	393294	46	513555	38
313155	46	319836	45	330466	45	332552	45	342278	45	344340	46	451307	45	513555	39
313162	46	319843	45	330473	45	332569	45	342292	45	344357	46	451406	45	513579	38
313179	46	319850	45	330480	45	333078	47	342308	45	344364	46	451505	45	513579	39
313377	45	319867	45	330497	45	334112	45	342322	45	344371	46	451604	45	515566	56
313384	45	319874	45	330503	45	334129	45	342339	45	344388	46	451703	45	518130	47
313391	46	319881	45	330510	45	334136	47	342346	45	344395	46	451901	45	520409	22
313407	46	319898	45	330527	45	334143	47	342353	45	344524	46	452007	45	520409	25
313414	46	319966	45	330534	45	335645	45	342360	45	344531	46	452922	45	520416	22
313421	46	319973	45	330541	45	335836	45	342377	45	344548	46	452939	45	520959	38
313438	46	319980	45	330558	45	336628	45	342391	45	344555	46	452946	45	520959	40
313445	46	319997	45	330565	45	336666	45	342407	45	344562	46	452953	45	522595	22
313452	46	320368	45	330572	45	336673	45	342414	45	344579	46	452960	45	522595	25
313841	46	320375	45	330589	45	336734	45	342421	45	344586	46	452977	45	523301	22
313858	46	320399	45	330596	45	336741	45	342438	45	344593	46	452984	45	523301	24
313865	46	320405	45	330602	45	336758	45	342445	45	344609	46	452991	45	523318	22
313872	46	320429	45	330619	45	336765	45	342452	45	344616	46	453004	45	523318	24
313883	45	320443	45	330626	45	336772	45	342469	45	344623	46	453059	45	523929	22
313889	46	320603	45	330633	45	337212	45	342476	45	344630	46	453066	45	523929	26
313902	46	320610	45	330640	45	337892	47	342483	45	344647	46	453073	45	524148	23
313919	46	320627	45	330657	45	338288	45	342490	45	344654	46	453080	45	524148	27
314367	46	320634	45	330664	45	338295	45	342506	45	344661	46	453097	45	524162	23
314374	46	320641	45	330671	45	338301	45	342520	45	345033	45	453103	45	524179	29
314480	46	320658	45	330688	45	338318	45	342537	45	345040	45	453110	45	530347	23
314497	46	320665	45	330695	45	338325	45	342544	45	345057	45	453127	45	530347	26
314527	46	320672	45	330701	45	338332	45	342551	45	345064	45	453141	45	530378	23
314619	46	320689	45	330718	45	338370	45	342568	45	345378	45	453189	45	530378	26
314626	46	320696	45	330725	45	338387	45	342575	45	345385	45	453196	45	545006	30
314886	46	320702	45	330732	45	338394	45	342582	45	347440	45	453202	45	551069	36
314893	46	320719	45	330749	45	338400	45	342599	45	347648	46	453219	45	551366	35
314909	46	320726	45	330756	45	338417	45	342605	45	347655	46	453226	45	551380	34
314916	46	320733	45	330763	45	338424	45	342629	45	347662	46	453233	45	551397	34
314923	46	320740	45	330770	45	338455	45	342636	45	347679	46	453240	45	551410	35
314930	46	320757	45	330787	45	338585	46	342636	45	347686	46	453257	45	551441	34
314947	46	320764	45	330794	45	338929	46	342797	46	347693	46	453264	45	560283	38
315333	46	320771	45	330800	45	340373	45	342803	46	347709	46	453271	45	560283	39
315340	46	320788	45	330817	45	340380	45	343305	45	347716	46	453271	45	560443	29
315364	46	320795	45	330824	45	340427	45	343350	45	347723	46	453318	45	560535	23
315371	46	320801	45	330831	45	340557	45	343367	45	347730	46	453325	45	560542	23
315388	46	321785	46	330848	45	341165	47	343718	45	347747	46	453332	45	560559	23
315395	46	321792	46	330855	45	341264	46	343725	45	347754	46	453349	45	560566	30
315401	46	321822	46	330862	45	341271	46	343732	45	347761	46	453356	45	560641	23
315715	46	321998	45	331524	45	341288	46	343749	45	347778	46	453363	45	560665	22
315722	46	325165	45	331791	45	341295	46	343756	45	348188	45	453370	45	560757	22
315739	46	325899	47	331814	45	341301	46	343763	45	351898	54	453387	45	560757	24
315746	46	325936	45	331821	45	341325	46	343770	45	351911	55	453394	45	560764	22
315753	46	325943	45	331838	45	341332	46	343787	45	362320	47	453448	45	560764	24
315760	46	325950	45	331845	45	341349	46	343794	45	392648	46	453455	45	560771	22
315777	46	325967	45	331852	45	341509	45	343800	45	392655	46	453462	45	560801	23
316019	46	325974	45	331869	45	341936	45	343817	45	392662	46	453479	45	560818	23
316026	46	325981	45	331876	45	341943	45	343978	46	392679	46	453486	45	560849	22
316057	46	325998	45	331890	45	341950	45	343985	46	392686	46	453493	45	560856	23
316064	46	326001	45	331906	45	341967	45	343992	46	392693	46	453509	45	600040	46
316415	46	326018	45	331913	45	341974	45	344005	46	392754	45	453516	45	600226	46
316422	46	326032	47	331937	45	341998	45	344012	46	392761	45	453530	45	601022	46
316439	46	327749	47	331944	45	342001	45	344029	46	392778	45	453579	45	603102	46
318082	45	329880	45	331951	45	342025	45	344036	46	392785	45	453585	45	603119	46

Barcode	Page	Barcode	Page	Barcode	Page	Barcode	Page	Barcode	Page	Barcode	Page	Barcode	Page	Barcode	Page
603126	46	711029	8	733311	46	734097	46	990479	61	991803	61	992930	63	993753	40
603133	46	711029	12	733328	46	734103	46	990578	59	991810	61	992947	63	993760	38
603157	46	711036	8	733335	46	734110	46	990585	59	991827	61	992954	63	993784	38
603164	46	711036	18	733342	46	734127	46	990592	59	992008	59	992961	63	993791	38
603171	46	711043	8	733359	46	734134	46	990608	59	992015	59	992978	64	993807	69
603188	46	711050	8	733366	46	734141	46	990615	59	992022	59	992985	64	993814	51
603195	46	711067	8	733373	46	734158	46	990622	59	992039	59	992992	64	993821	51
603201	46	711074	8	733380	46	734165	46	990639	59	992046	59	993005	64	993838	57
603218	46	711081	7	733397	46	734172	46	990646	59	992053	59	993012	63	993852	50
603225	46	711098	8	733403	46	734189	46	990653	59	992060	59	993029	63	993869	49
604208	46	711104	7	733410	46	734196	46	990752	60	992077	59	993036	64	993876	49
604215	46	711111	7	733427	46	734202	46	990769	60	992084	59	993043	64	993883	47
604246	46	711128	8	733434	46	734219	46	990776	60	992091	60	993050	63	993890	47
604253	46	711135	8	733441	46	734226	46	990783	60	992107	60	993067	63	993906	47
604260	46	711142	12	733458	46	734233	46	990790	60	992114	60	993074	63	993913	47
604277	46	711159	9	733465	46	734240	46	990806	60	992121	60	993081	63	993920	47
604369	57	711166	9	733472	46	734257	46	990813	60	992138	60	993098	63	993937	53
622082	46	711173	9	733489	46	734264	46	990820	60	992145	60	993104	64	993944	53
623773	46	711180	9	733496	46	734271	46	990837	60	992152	60	993111	64	993951	53
634588	46	711197	9	733502	46	734288	46	990844	61	992169	60	993128	64	993968	53
634618	46	711203	9	733519	46	734295	46	990851	61	992176	60	993135	64	993975	57
634632	46	711210	5	733526	46	734301	46	990868	61	992183	61	993142	63	993982	54
634656	46	711227	5	733533	46	734318	46	990875	61	992190	61	993159	63	993999	54
634670	46	711234	5	733540	46	734325	46	990882	61	992206	61	993166	64	994002	51
634687	46	711241	5	733557	46	734332	46	990899	61	992213	61	993173	64	994019	51
634700	46	711258	5	733564	46	734349	46	990905	61	992220	61	993180	63	994026	51
634755	46	711265	5	733571	46	734356	46	990912	61	992237	61	993197	63	994033	54
634793	46	711272	5	733588	46	734363	46	990929	61	992244	61	993203	64	994040	51
634809	46	711289	5	733595	46	734370	46	991025	59	992251	61	993210	65	994057	51
634816	46	711296	5	733601	46	734387	46	991032	59	992268	61	993227	65	994064	51
634823	46	711302	5	733618	46	734394	46	991049	59	992367	59	993241	65	994071	52
634878	46	711319	10	733625	46	734400	46	991056	59	992374	59	993258	65	994088	52
634915	46	711326	10	733632	46	734417	46	991063	59	992381	59	993265	69	994095	52
634922	46	711333	10	733649	46	734424	46	991070	59	992398	59	993272	69	994101	52
635202	46	711340	10	733656	46	734431	46	991087	59	992404	59	993289	68	994118	52
636599	46	711357	10	733663	46	734448	46	991094	59	992411	59	993296	68	994125	52
704656	47	711364	10	733670	46	734455	46	991100	59	992428	59	993302	68	994132	52
704663	47	711371	10	733687	46	734462	46	991216	60	992435	59	993319	50	994149	52
710725	16	711388	10	733694	46	734479	46	991223	60	992534	59	993333	50	994156	52
710732	16	711395	10	733700	46	734486	46	991230	60	992541	60	993340	57	994163	52
710749	16	711395	20	733717	46	734493	46	991247	60	992558	60	993357	56	994170	52
710756	16	711401	10	733724	46	734509	46	991254	60	992565	60	993364	66	994187	52
710763	16	711401	20	733731	46	734516	46	991261	60	992572	60	993371	66	994194	52
710770	16	711418	10	733748	46	734523	46	991278	60	992589	60	993388	66	994200	52
710787	16	711418	20	733755	46	734530	46	991285	60	992596	60	993395	66		
710794	16	711425	10	733762	46	734547	46	991292	60	992602	60	993401	66		
710794	20	711425	20	733779	46	734554	46	991308	61	992619	60	993418	66		
710800	15	711449	7	733786	46	734561	46	991315	61	992626	60	993425	66		
710800	20	711449	13	733793	46	734578	46	991322	61	992633	61	993432	66		
710817	15	711449	18	733809	46	734585	46	991339	61	992640	61	993449	67		
710824	15	720038	38	733816	46	734592	46	991346	61	992657	61	993456	67		
710824	20	720038	40	733823	46	790055	47	991353	61	992664	61	993463	67		
710831	15	730402	45	733830	46	990011	59	991360	61	992671	61	993470	67		
710831	20	733069	46	733847	46	990028	59	991377	61	992688	61	993487	67		
710848	15	733076	46	733854	46	990035	59	991384	61	992695	61	993494	67		
710848	20	733083	46	733861	46	990042	59	991483	59	992701	61	993500	67		
710855	15	733090	46	733878	46	990059	59	991490	59	992718	61	993517	67		
710862	19	733106	46	733885	46	990066	59	991506	59	992725	61	993524	55		
710879	19	733113	46	733892	46	990073	59	991513	59	992732	61	993531	55		
710886	6	733120	46	733908	46	990080	59	991520	59	992749	61	993548	42		
710893	6	733137	46	733915	46	990097	59	991537	59	992756	61	993555	42		
710909	6	733144	46	733922	46	990288	60	991544	59	992763	61	993586	38		
710916	6	733151	46	733939	46	990295	60	991551	59	992770	61	993586	42		
710916	11	733168	46	733946	46	990301	60	991568	59	992787	61	993593	38		
710916	17	733175	46	733953	46	990318	60	991667	60	992794	61	993593	43		
710923	6	733182	46	733960	46	990325	60	991674	60	992800	61	993609	38		
710923	11	733199	46	733977	46	990332	60	991681	60	992817	61	993616	38		
710930	6	733205	46	733984	46	990349	60	991698	60	992824	61	993623	51		
710930	11	733212	46	733991	46	990356	60	991704	60	992831	61	993647	51		
710947	6	733229	46	734004	46	990363	60	991711	60	992848	61	993654	51		
710954	6	733236	46	734011	46	990387	61	991728	60	992855	61	993661	51		
710961	11	733243	46	734028	46	990394	61	991735	60	992862	61	993678	51		
710978	11	733250	46	734035	46	990417	61	991742	61	992879	61	993708	38		
710985	7	733267	46	734042	46	990424	61	991759	61	992886	68	993722	38		
710992	7	733274	46	734059	46	990431	61	991766	61	992893	68	993722	41		
711005	7	733281	46	734066	46	990448	61	991773	61	992909	68	993746	38		
711005	13	733298	46	734073	46	990455	61	991780	61	992916	68	993746	39		
711012	7	733304	46	734080	46	990462	61	991797	61	992923	68	993753	38		

Intellinet Network Solutions

Löhbacher Str. 7 | 58553 Halver | 02353 7007 0 | +49 2353 7007 0
intellinet-network.com

Ideal for small
and medium-
sized businesses

