

## Characterization of Bioactive Compounds in Ethanolic Extract of *Cissus vitiginea* Leaves Using GC-MS Technique

\*I. Gnanasundaram<sup>1</sup>, K. Balakrishnan<sup>2</sup>

<sup>1</sup>Research scholar, P.G and Research Department of Chemistry, A.V.V.M. Sri Pushpam College (Autonomous), Poondi-613 503, Thanjavur Dt.

<sup>2</sup>Associate Professor, P.G and Research Department of Chemistry, A.V.V.M. Sri Pushpam College (autonomous), Poondi-613 503, Thanjavur Dt. Tamil Nadu, South India.

<sup>2</sup>Corresponding author: K. Balakrishnan

---

**Abstract:** Plants have been an important source of medicine with qualities for thousands of years. Phytochemicals are the chemicals extracted from plants. These organic chemicals are classified as primary or secondary constituents, depending on their role in plant metabolism. GC-MS method used for the analysis of the obtained extract can be an interesting tool for testing the amount of some active principles in herbs used in various industries. The aim of this study was to carry out for identification of bioactive compounds from the whole plant methanolic extract of *Cissus vitiginea* by Gas chromatography and Mass spectroscopy (GC-MS). GCMS analysis of methanolic extract was done by standard protocol using the equipment Perkin-Elmer Gas Chromatography–Mass Spectrometry, while the mass spectra of the compounds found in the extract was matched with the National Institute of Standards and Technology (NIST) library. The GC-MS analysis revealed the presence of various compounds like Hexadecane, Pentadecane, 3,7,11,15-Tetramethyl-2-hexadecen-1-ol, Hexadecanoic acid, methyl ester, 9-Octadecenoic acid (Z)-, methyl ester and Bicyclo[3.1.0]hexane-2-undecanoic acid, methyl ester in the ethanolic extract of *Cissus vitiginea*. These findings support the traditional use of *Cissus vitiginea* in various disorders.

**Keyword:** Gas chromatography and Mass spectroscopy, *Cissus vitiginea*, Phytochemistry

---

Date of Submission: 12-09-2017

Date of acceptance: 23-09-2017

---

### I. Introduction

Plants have been an important source of medicine with qualities for thousands of years. Plants are used medicinally in different countries, and they are the source of many potent and powerful drugs. Mainly on traditional remedies such as herbs for their history, they have been used as popular folk medicines [1]. It has been shown that *in vitro* screening methods could provide the needed preliminary observations necessary to elect crude plant extracts with potentially useful properties for further chemical and pharmacological investigations [2].

Phytochemistry or plant chemistry has developed in recent years as a distinct discipline, somewhere in between natural product organic chemistry and plant biochemistry and is closely related to both. It is concerned with the enormous variety of organic substances that are elaborated with and accumulated by plants and deals with the chemical structures of these substances, their biosynthesis, turn over and metabolism, their natural distribution and their biological function [3].

Phytochemicals are the chemicals extracted from plants. These organic chemicals are classified as primary or secondary constituents, depending on their role in plant metabolism. Primary constituents include the common sugars, aminoacids, proteins, purines and pyrimidines of nucleic acids, chlrophyll's etc. Secondary constituents are the remaining plant chemicals such as alkaloids (derived from aminoacids), terpenes (a group of lipids) and phenolics (derived from carbohydrates) [4]. Plant produces these chemicals to protect itself but recent research demonstrates that emphasizes the plant source of most of these protective, disease-preventing compounds. A true nutritional role for phytochemicals is becoming more probable every day as research uncovers more of their remarkable benefits [5]. Within a decade, there were a number of dramatic advances in analytical techniques including TLC, UV, NMR and GC-MS that were powerful tools for separation, identification and structural determination of phytochemicals [6].

Gas Chromatography Mass Spectroscopy (GC-MS) a hyphenated system which is a very compatible technique and the most commonly used technique for the identification and quantification of biochemical components of medicinal plants [7]. The chosen medicinal plant namely as *Cissus vitiginea* L. leaves belongs to Vitaceae family. *Cissus vitiginea*. is widely distributed in India, Nepal and Bhutan. The aim of this study is to determine the organic compounds present in the *Cissus vitiginea* extract with the aid of GC-MS Technique.

## II. Material And Methods

**2.1 Plant materials:** The whole plant of *Cissus vitiginea* leaves were collected in March 2016 from Thanjavur, Tamil Nadu, India from a single herb. The leaves were identified and authenticated by Dr. S. John Britto, The Director, the Rapinat Herbarium and center for molecular systematics, St. Joseph's college Trichy-Tamil Nadu, India. A Voucher specimen has been deposited at the Rabinat Herbarium, St. Josephs College, Thiruchirappalli, Tamil nadu, India.

### 2.2 Preparation of extracts:

The collected *Cissus vitiginea* leaves were washed several times with distilled water to remove the traces of impurities from the leaves. Then examined carefully old, infected and fungus damaged portion of the leaves were removed. Healthy leaves were spread out in a plain paper and shade dried at room temperature for about 10 days and ground in to fine powder using mechanical grinder. The powder was extracted with ethanol for 24 hours. A semi solid extract was obtained after complete elimination of alcohol under reduced pressure. The *Cissus vitiginea* leaves extract (CVLE) was stored in refrigerator until used.

### 2.3 GC –MS analysis

GC-MS analysis was carried out on a GC clarus 500 Perkin Elmer system comprising a AOC-20i autosampler and gas chromatograph interfaced to a mass spectrometer instrument employing the following conditions: column Elite-1 fused silica capillary column (30 x 0.25mm ID x 1µMdf, composed of 100% Dimethyl polydimloxane), operating in electron impact mode at 70eV; Helium gas (99.999%) was used as carrier gas at a constant flow of 1 ml /min and an injection volume of 0.5 µl was employed (split ratio of 10:1) injector temperature 250 °C; ion-source temperature 280 °C. The oven temperature was programmed from 110 °C (isothermal for 2 min), with an increase of 10 °C/min, to 200°C, then 5°C/min to 280°C, ending with a 9min isothermal at 280°C. Mass spectra were taken at 70eV; a scan interval of 0.5 seconds and fragments from 40 to 450 Da. Total GC running time is 36min. min. The relative percentage amount of each component was calculated by comparing its average peak area to the total areas. Software adopted to handle mass spectra and chromatograms was a Turbo Mass Ver 5.2.0

## III. Results And Discussion

Gas chromatography – mass spectrometry (GC-MS) is a method that combines the features of gas-liquid chromatography and mass spectrometry to identify different substances within a test sample [8]. In the last few years, GC-MS has become firmly established as a key technological platform for secondary metabolite profiling in both plant and non-plant species [9]. Plants have an almost limitless ability to synthesize aromatic substances, most of which are phenols or their oxygen substituted derivatives. Most are secondary metabolites, of which at least 12,000 have been isolated, a number estimated to be less than 10% of the total. These substances serve as plant defense mechanisms against, insects and herbivores. Flavonoids exhibit several biological effects such as anti-inflammatory, anti-fungal, anti-hepatotoxic and anti-ulcer actions [10]. Interpretation on mass spectrum GC-MS was conducted using the database of National Institute Standard and Technology (NIST) having more than 62,000 patterns. The spectrum of the unknown component was compared with the spectrum of the known components stored in the NIST library. The name, molecular weight and structure of the components of the test materials were ascertained.

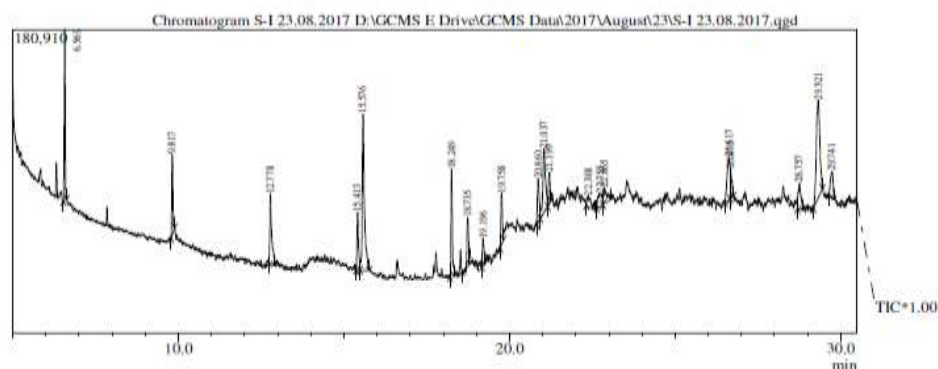
Twenty compounds were identified in *Cissus vitiginea* by GC-MS analysis. The active principles with their retention time (RT), molecular formula, molecular weight (MW) and concentration (%) are presented in (Table 1 and Fig 1). The prevailing compounds were Hexadecane, Pentadecane, 3,7,11,15-Tetramethyl-2-hexadecen-1-ol, Hexadecanoic acid, methyl ester, 9-Octadecenoic acid (Z)-, methyl ester and Bicyclo[3.1.0]hexane-2-undecanoic acid, methyl ester. The biological activities of identified compounds were listed (Table 2) are based on Dr.Duke's Phytochemical and Ethnobotanical Databases by Dr. Jim Duke of the Agricultural Research Service/USDA.

Among the identified phytochemicals hexadecanoic acid is suggested to be a fatty acid ester and it may employed as antioxidant, antimicrobial, flavor, hypocholesterolemic agent and larvicidal activities [11 and 12]. 1, 2- benzenedicarboxylic acid, diisooctyl ester is a plasticizer compound and acts as antimicrobial and antifouling agent [13].

Compounds like n-hexadecanoic acid, 12-octadecanoic acid, dodecanoic acid, tetradecanoic acid, 1,2-Benzenedicarboxylic acid, dibutyl ester, hexadecanoic acid, ethyl ester and 9,12-octadecadienoic acid (Z,Z) were identified in the ethanolic leaf extract of *Vitex altissima*, a Verbenaceae member [14]. Likewise, hexadecane, dodecanoic acid, nonadecane, eicosane, tetradecanoic acid, oleic acid, heptacosane, 9,12-octadecenoic acid, ethyl ester; n-hexadecanoic acid; 1,2-benzenedicarboxylic acid and 9-octadecenoic acid (Z)-ethyl ester were reported in *Clerodendrum inerme* and *C. phlomidis* leaves [15 and 16].

## Characterization Of Bioactive Compounds In Ethanolic Extract Of *Cissus vitiginea* Leaves Using Gc

The investigation concluded that the stronger extraction capacity of methanol could have been produced number of active constituents responsible for many biological activities. So that those might be utilized for the development of traditional medicines and further investigation needs to elute novel active compounds from the medicinal plants which may be created a new way to treat many incurable diseases.



**Fig.1:** GC MS Chromatogram

**Table-1:** Identification of bioactive compounds in ethanolic extract of *Cissus vitiginea* leaf extract using GC MS

Peak#	R.Time	Area%	Molecular formula	Molecular Weight	Molecular name	
1	6.569	7.33	C <sub>11</sub> H <sub>24</sub>	156	Undecane	Alkane
2	9.817	3.96	C <sub>13</sub> H <sub>28</sub>	184	Undecane, 3,7-dimethyl-	Hydrocarbon
3	12.778	5.81	C <sub>16</sub> H <sub>34</sub>	226	Hexadecane	Alkane
4	15.413	3.81	C <sub>15</sub> H <sub>32</sub>	212	Pentadecane	
5	15.576	15.17	C <sub>20</sub> H <sub>26</sub> O <sub>4</sub>	330	Phthalic acid, di-(1-hexen-5-yl) ester	Ester
6	18.249	6.42	C <sub>20</sub> H <sub>40</sub> O	296	3,7,11,15-Tetramethyl-2-hexadecen-1-ol	Terpene alcohol
7	18.735	3.34	C <sub>15</sub> H <sub>30</sub> O	226	Pentadecanal-	Aliphatic aldehydes
8	19.196	1.91	C <sub>17</sub> H <sub>34</sub> O <sub>2</sub>	270	Hexadecanoic acid, methyl ester	Fatty acid
9	19.758	3.50	C <sub>16</sub> H <sub>22</sub> O <sub>4</sub>	278	1,2-Benzenedicarboxylic acid, dibutyl ester	Dicarboxylic acid ester
10	20.860	3.50	C <sub>36</sub> H <sub>75</sub> O <sub>3</sub> P	586	Phosphonic acid,	Diocetadecyl ester
11	21.037	7.50	C <sub>19</sub> H <sub>36</sub> O <sub>2</sub>	296	9-Octadecenoic acid (Z)-, methyl ester	Fatty acid ester
12	21.199	2.04	C <sub>8</sub> H <sub>16</sub> O	128	3,4-Dimethylcyclohexanol	
13	22.388	2.02	C <sub>13</sub> H <sub>21</sub> BrO <sub>3</sub>	304	3-(6-bromo-hexyl)-2,4,10-trioxadamantane	
14	22.755	2.37	C <sub>8</sub> H <sub>13</sub> Cl <sub>3</sub> O <sub>3</sub>	262	Carbonic acid, 3-pentyl 2,2,2-trichloroethyl ester	
15	22.865	2.37	C <sub>26</sub> H <sub>50</sub> OSi <sub>2</sub>	434	3-{Dimethyl[16-(Trimethylsilyl)Hexadeca-1',15'-Diynyl]Silyl-3'-Methylbutan-1-Ol	
16	26.617	5.26	C <sub>18</sub> H <sub>32</sub> O <sub>2</sub>	280	Bicyclo[3.1.0]hexane-2-undecanoic acid, methyl ester	Bicyclic derivative
17	26.675	2.08	C <sub>12</sub> H <sub>22</sub> Si <sub>2</sub>	222	1,4-Bis(trimethylsilyl) benzene	
18	28.757	2.98	C <sub>24</sub> H <sub>38</sub> O <sub>4</sub>	390	Diisooctyl phthalate	
19	29.321	15.68	C <sub>10</sub> H <sub>14</sub> N <sub>2</sub> O	178	Propanamide, 2-methyl-2-phenylamino-	
20	29.741	2.98	C <sub>18</sub> H <sub>38</sub> O <sub>3</sub> S	334	Sulfurous acid, pentadecyl 2-propyl ester	

**Table.2:** Biological activity of phytochemicals identified in the ethanol leaf extract of *Cissus vitiginea*

S.No	Compounds name	Biological Active compounds**
1.	Hexadecane	Antimicrobial Activity
2.	Pentadecane	Antitussive, antiulcer
3.	3,7,11,15-Tetramethyl-2-hexadecen-1-ol	Antimicrobial, Anti-inflammatory
4.	Hexadecanoic acid, methyl ester	Antioxidant, hypocholesterolemic, Anti androgenic, hemolytic, Alpha reductase inhibitor.
5.	9-Octadecenoic acid (Z)-, methyl ester	5- $\alpha$ reductase inhibitor, allergenic, $\alpha$ -reductase inhibitor, anti inflammatory, antiandrogenic, cancer preventive, anemiagenic, anti alopecic, anti leukotriene-D <sub>4</sub> , choleric, dermatitigenic, hypocholesterolemic, insectifuge, perfumery, propepic, flavour.
6.	Bicyclo[3.1.0]hexane-2-undecanoic acid, methyl ester	Antiepileptic activity
7.	Sulfurous acid, pentadecyl 2-propyl ester	Disinfectants

\*\*Duke's. Phytochemical and Ethnobotanical Databases, www.ars-gov/cgi-bin/duke/, 2013.

#### IV. Conclusion

The investigation concluded that the stronger extraction capacity of ethanol could have been produced number of active constituents responsible for many biological activities. So that those might be utilized for the development of traditional medicines and further investigation needs to elute novel active compounds from the medicinal plants which may be created a new way to treat many incurable diseases.

#### Reference

- [1] G. Sathyaprabha, S. Kumaravel, D. Ruffina, and P.A. Praveenkumar. comparative study on antioxidant, proximate analysis, antimicrobial activity and phytochemical analysis of Aloe vera and Cissus quadrangularis by GC-MS. J Pharma Res, 3, 2010, 2970-3.
- [2] A.D. Mathekaga, and J.J.M. Meyer, Antibacterial activity of South African Helichrysum species. South Afr J Bot; 64, 1998, 293-5.
- [3] J.B. Harborne, Plant flavonoids in biology and medicine: Biochemical pharmacological, and structure–activity relationships. NY, USA: Alan R. Liss, 1986, 15–24.
- [4] R.H. Liu, Potential synergy of phytochemicals in cancer prevention: Mechanism of action. Journal of Nutrition, 134(12), 2004, 3479–3485.
- [5] M. Hamburger, and K. Hostettmann, Bioactivity in plants: the link between phytochemistry and medicine. Phytochemistry. 30, 1991, 3864-74.
- [6] J.K.M. Roberts, and J.H. Xia, High-resolution NMR methods for study of higher plants. Methods Cell Biol, 49, 1995, 245–258.
- [7] A. Ronald Hites, Gas Chromatography Mass Spectroscopy (Handbook of Instrumental Techniques for Analytical Chemistry, 1997, 609-611).
- [8] D.B. Kell, M. Brown, H.M. Davey, W.B. Dunn, I. Spasic, and S.G. Oliver, Metabolic footprinting and systems biology: The medium is the message. Nat Rev Microbiol, 3, 2005, 557-65.
- [9] A.R. Fernie, R.N. Trethewey, A.J. Krotzky, and L. Willmitzer, Metabolite profiling: From diagnostics to systems biology. Nat Rev Mol Cell Biol, 5, 2004, 763-9.
- [10] A. De-Fatima, L.V. Modolo, L.S. Conegero, R.A. Pilli, C.V. Ferreira, L.K. Kohn and J.E. de-Carvalho, Lactones and their derivatives: biological activities, mechanisms of action and potential leads for drug design. Curr. Med. Chem. 13, 2006, 3371-3384.
- [11] J. Bodoprost, and H. Rosemeyer, Analysis of phenacyl ester derivatives of fatty acids from human skin surface by reversed-phase HPTLC: Chromatography mobility as a function of physicochemical properties. International Journal of Molecular Sciences, 8, 2007, 1111-1124.
- [12] A. Falodun, R. Siraj, and M.I. Choudary, GC- MS analysis of insecticidal leaf essential oil of Pyrenacanthastaudtii Hutch and Dalz (Icacinaceae). Tropical Journal of Pharmaceutical Research, 8, 2009, 139-143.
- [13] O.P. Heinonen, D. Alnanes, and T. Virtamo, Prostate cancer and supplementation with alpha- tocopherol and beta-carotene: incidence and mortality in a controlled trial. Journal of the National CancerInstitute, 90(6), 1998, 440-446.
- [14] S.S. Sathish, N. Janakiraman, and M. Johnson, Phytochemical analysis of VitexaltissimaL. Using UV-VIS, FTIR and GC- MS. International Journal of Pharmaceutical Sciences and Drug Research, 4(1), 2012, 56-62.
- [15] K. Anandhi, and T. Ushadevi, Analysis of phytochemical constituents and antibacterial activities of Clerodendrum inerme L. against some selected pathogens. International Journal of Biotechnology and Allied Fields, 1(7), 2013, 387-393.
- [16] K. Balaji, and D. Kilimozhi, GC-MS analysis of various extracts of Clerodendrum phlomidis leaf. Responsible for many biological activities and its beneficial effects could be utilized to create an International Journal of Pharmacy and Pharmaceutical Sciences, 6(1), 2014, 226-232.

IOSR Journal of Applied Chemistry (IOSR-JAC) is UGC approved Journal with Sl. No. 4031, Journal no. 44190.

Gnanasundaram. “Characterization of Bioactive Compounds in Ethanolic Extract of Cissus Vitiginea Leaves Using Gc-Ms Technique.” IOSR Journal of Applied Chemistry (IOSR-JAC) , vol. 10, no. 9, 2017, pp. 24–27.