



c3 series
connect converge communicate

WORKIO[®]
DIGITAL COLOR IMAGING SYSTEMS

brilliant

DP-C322 / DP-C262



Smarter **Systems** for a Smarter **Workplace**

- Full-color MFP with Quick Start Warm-up
- Up to 21 ppm Color Printing / Copying
- Up to 32 ppm / 26 ppm Monochrome Printing / Copying (DP-C322 / DP-C262 respectively)
- Convenient SD Memory and PC Card Interfaces
- Advanced Security Features
- Universal Design Control Panel with Graphical Interface



Panasonic ideas for life

Collaborate in



The Panasonic WORKiO DP-C322 and DP-C262 are smart solutions designed to help you produce and distribute dynamic communications with vivid, brilliant color. These multifunction systems make scanning, copying, printing and faxing easier and more efficient – and come with the advantage of Panasonic's truly remarkable color quality. And with the systems SD Memory and PC Card interface, you can print and scan your documents and images without additional devices. With quick startup, a user-friendly adjustable control panel and advanced print technology, these two multifunction systems are smart choices for your office... and that's simply brilliant!

SD / PC Card Slots

Network Printing

Network Scanning

Faxing

Copying



Document Management

Color for Brilliant Communication

Print Smarter

For your printed communications, the smart choice is color. Liven up your presentations, reports, spreadsheets and everything you print with an array of vibrant color. Your documents will get noticed – and read!



Scan & Send Smarter

The DP-C322 and DP-C262 are designed for the efficient creation and distribution of your color materials. You can quickly scan color documents into compressed PDF files that are small enough to easily send and open as email attachments.



Copy Smarter

Creating and copying brochures, flyers and booklets and small originals are no longer troublesome tasks. By using the systems' versatile finishing functions, you can easily create your own brochures, flyers, booklets, etc. in-house, and save on outsourcing costs.



Operate Smarter

Universal designs are a smart idea, and the DP-C322 and DP-C262 make operating the system easier than ever with its 7.8" full color adjustable control panel with graphical user interface.





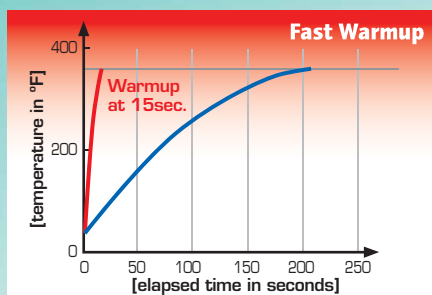
IH Technology

Most conventional color laser printing devices indirectly heat the fuser roller using a halogen lamp that requires high energy consumption and results in long warmup times. To reduce warmup time for today's high demand of quick output, the fuser roller has to be pre-heated. Energy consumption efficiency or office productivity, which should come first?

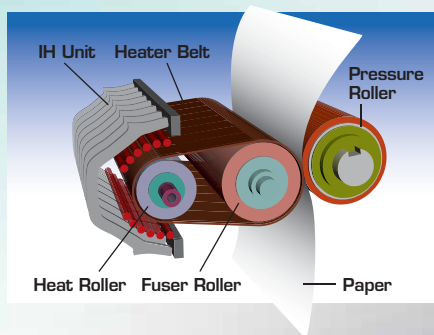
Panasonic has a smart solution for this dilemma. Innovative Induction Heating (IH) technologies and a newly developed heater belt with low thermal capacity eliminates the need of pre-heating and maximizes the efficiency of the heating process that results in the industry's fastest warmup time while it requires the industry's lowest power usage.

quick START

Fast Warmup, Low Energy



■ IH technology □ Conventional



Quick Start-up while Saving Energy

Thanks to Panasonic's IH technologies, the DP-C322 and DP-C262 warm up and are ready for printing in approximately 15 seconds from sleep mode while using only 25W of energy. This

contributes not only to quick color document output and improved user productivity, but helps to conserve the environment.



Greater Convenience with SD Memory Card Printing

Here's real convenience: you can insert an SD Memory Card into the front of the machine and get instant prints without having to use a PC. You can print JPEG images from a digital camera or PDF*, JPEG or TIFF files from any PC. Images appear on the panel display as thumbnails**; and to print, you simply just touch it. There's no need to use the printer driver or open an application. A PC card slot for various other types of removable media is also provided.

* Requires Printer Controller Module option (for Adobe PostScript3)

** Requires Exif-compatible JPEG taken with a digital camera Exif (Exchangeable Image File Format)

Use an adapter in the PC-card slot to print from Multimedia Memory Card, Compact Flash or various other media cards.

* Some media cards may not be compatible.

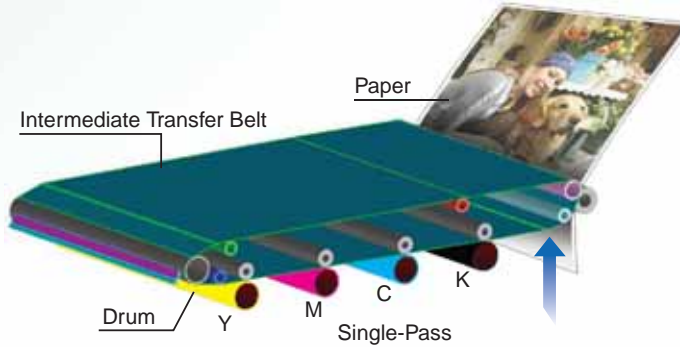


Smarter

Any system that lets you print faster, more economically and with higher quality has to be a smart investment.

Speedy results

In addition to quick warmup, the one-pass high-speed print engine performs the color image transfer process. This generally requires four passes. Both the DP-C322 and DP-C262 print color documents fast at speeds of up to 21 ppm and up to 32 or 26 ppm respectively for black and white.



Color Engine

Panasonic has refined all parts to maximize color performance. The Intermediate Transfer Belt, for example, has high surface resistance for more effective and consistent toner image transfer. The toner itself has smaller, more uniform particles for superior image quality.

Superb Print Quality

To further improve picture quality, Panasonic uses an emulsion aggregation toner with smaller, more uniform particles. This helps ensure smoother image reproduction by reducing the roughness of the intermediate tones in photos. Also, this toner allows the system to operate at a lower temperature and proves to be more cost efficient and environmentally friendly.



Superior Resolution

Standard, Photo Color and Enhanced printing modes are provided. And you can optimize the data processing resolution for specific purposes. With a maximum resolution of 1,200 x 1,200 dpi*, you can print fine color images that are very close to the original.

* Requires optional page memory

Convenient Printing



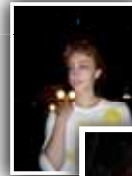
Printer Driver

Panasonic's intuitive graphical user interface of the printer driver makes PC printing very easy and straightforward.

You can also print PC files (PDF*, TIFF, JPEG) directly through simple "Drag & Drop" operation to an icon on the PC desktop without even opening the file's application software. Printing is now quicker and easier than ever. Simply Brilliant.

* Requires Printer Controller Module (for Adobe®PostScript®3™) option

Automatic Contrast Adjustment



When you print photos* from digital cameras, each one will automatically be processed to maximize contrast for the best possible sharpness and clarity. This is especially helpful for photos taken at night or with backlighting. Automatic Contrast Correction is also applied to photos printed from SD cards or other memory cards.

* Exif compatible JPEG files.



Scan & Send Smarter

If you're looking for a smarter way to scan or send color documents, you've found it with the Panasonic DP-C322 and DP-C262. You can select color data compression levels to best match your needs: create smaller file sizes, higher image reproduction quality and legibility of text.

SD

Scan & Carry

With a simple operation, documents can be scanned directly to an SD memory card or PC card you have inserted. You can print from the card, or remove it and transfer the document to a PC, or take it with you for on-the-fly presentations.

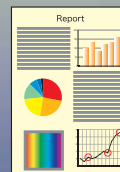


Scan & Distribute

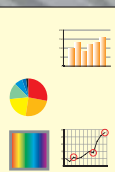
You can scan and send documents either color or monochrome as email attachments (PDF, TIFF, JPEG) straight from the large LCD touch panel. Up to 1,000 email addresses can be programmed in the machine's local address book. You can even minimize the programming of the local address book. If your company is running an LDAP (Lightweight Directory Access Protocol) server, the DP-C322 and DP-C262 allow you to access the company's database and retrieve desired recipient email addresses right off the LCD touch panel. This means your address book capacity is virtually unlimited.



Compressed PDF



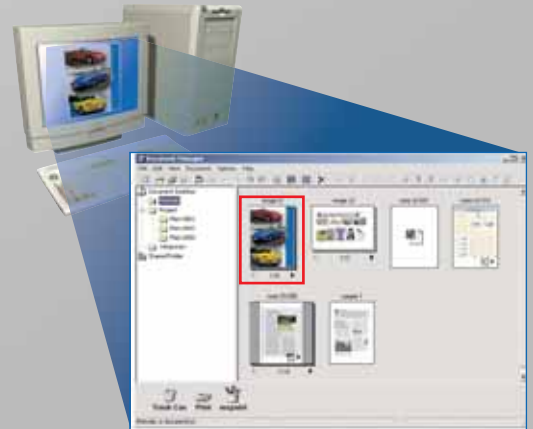
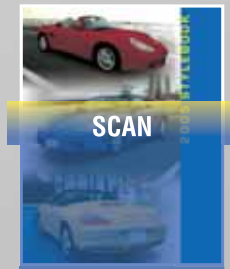
The PDF file format is extremely convenient for sending and receiving documents. However, since the data size of a full color document is not small, for instance, sending multiple-page color documents via the network may become a problem. If the resolution is lowered, the file size shrinks, but the image quality and text legibility will be sacrificed...





Scan & Archive

Scan documents directly into your PC or FTP server for archiving at up to high 600 dpi resolution and at fast speeds of up to 32 originals per minute. With Panasonic Document Management System software, you can view, annotate, send or edit the scanned image files.

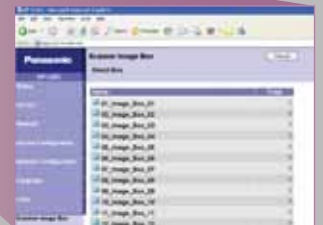


Document Manager

HDD Scan & Share



With the standard HDD unit, you can create up to 12 "image boxes" to store the scanned documents. The files saved in the image boxes can be easily viewed using a common web browser from any PC on your network.

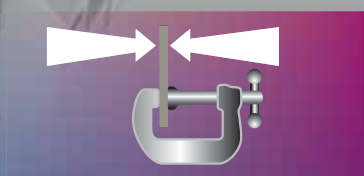


SUPER 3GB Fax/PC Fax

The DP-C322 and DP-C262 have convenient PC Fax functions for transmitting faxes directly from your PC desktop without printing them on paper first. The Fax and Internet Fax options come with two types of PC Fax software. One is the "Panasonic Fax Driver" that is simply for transmission only and allows you to share the machine's fax address book information with the PC. The other is "Panafax Desktop" that has many powerful features such as paperless fax reception and a fax address book customizable from other databases.

* Requires optional Fax Communication Board and Internet Fax / Email Module.

With the Compressed PDF feature, the scanned image is divided into two layers – image layer and text layer. The image layer data is compressed using JPEG. The text layer is compressed using MMR (a popular fax machine compression method). This process maintains text clarity while it reduces the file size.



These two layers are then put back together, resulting in significantly reduced file size, yet retaining the high legibility of text without heavily degrading image quality. This 'light' file can be sent quickly and can be opened using a standard PDF reader.

Smart & Versatile Copying

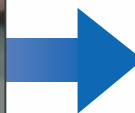
The DP-C322 and DP-C262 provide a wide selection of copy modes that are easily accessed via the intuitive interface on the control panel. You can optimize copying for a wide variety of originals such as newspaper and tracing paper, and choose special functions including Color Double Exposure, Stamping and N in 1. Two other brilliant features are Background Suppression and Bleedthrough Prevention to produce clear images and text even with "difficult" originals.

Color Double Exposure

Make color copies of double-sided documents on a single sheet of paper without black borders, even if the platen cover is open. This feature is especially convenient for small double-sided items such as ID cards and checks.



Double-sided material



Both images are copied onto a single sheet in color

Image Quality Selection

The DP-C322 and DP-C262 feature several built-in copy modes. In addition to Text, Photo/Text and Photo modes, there's Map, Newspaper, and Tracing paper modes. By just selecting the appropriate mode, you will get beautiful and clear copies. For example, by selecting Newspaper mode, the DP-C322 and DP-C262 automatically perform Background Suppression and Bleedthrough Prevention, resulting in clean and easy to read copies.



Automatically performs Background Suppression and Bleedthrough Prevention



Convenient Text Stamp

This unique feature allows you to stamp pagination, date and issue numbers. Also, up to 32 characters (A to Z, 0 to 9 and symbols) can be added as a note, subject, etc.

- Selectable Stamp Position
- Useful for various industries



Smarter

These smart systems give you plenty of copying and finishing options, so creating a large, multi-set job is no longer a complicated and troublesome task.

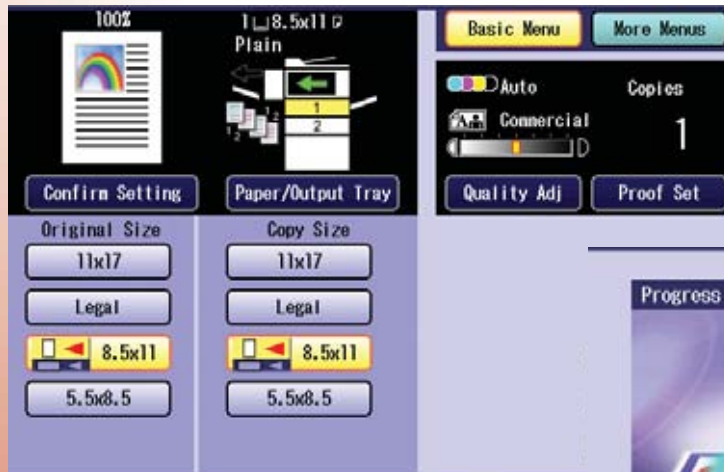
Versatile Finishing and Booklet Creation

When the optional finisher is installed, you can automatically perform finishing tasks in-house, rather than having to do them manually or having to outsource them. Installing this option on the DP-C322 and DP-C262 permits finishing required for various types of binding: stapling, hole punching, saddle stitching and so on. It can handle a wide range of documents, such as manuals, conference materials and handbooks, all in richly expressive, brilliant color. Just another way Panasonic is helping you achieve on-demand printing.



Create colorful manuals and brochures in-house by using the optional finisher.

Highly Visible and Intuitive User Interface



The large 7.8" VGA full color LCD touch panel is both highly visible and easy to use. Its Graphical User Interface is designed to make operation extremely quick and intuitive. Users can instantaneously find and understand what to do to get the desired job done.



During scanning, the display shows an animation of scanning progress.



Quality adjustments are easily made by selecting the appropriate presets.

Fully Accessible Control Panel



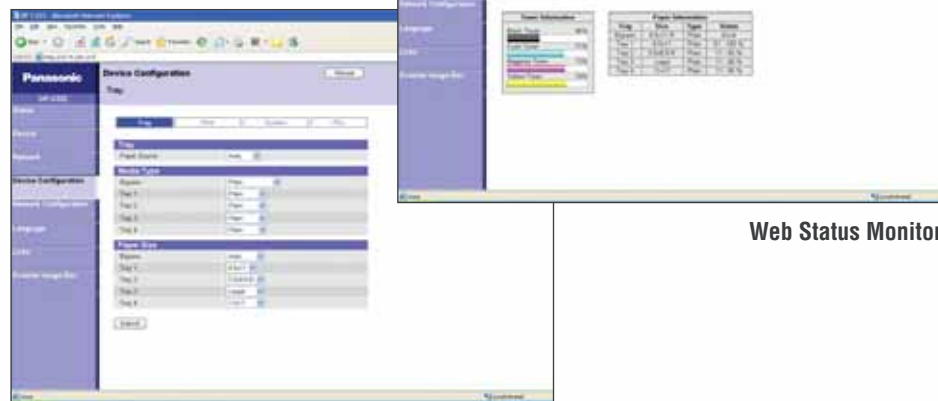
Universal design is one of the most important criteria for today's office products. The DP-C322 and DP-C262 are equipped with an angle-adjustable operation panel. (4 levels, 15°, 30°, 45°, 60°) This makes access to the panel easy and comfortable for wheelchair users and users of differing heights.

Smarter

Panasonic made these systems more efficient by starting with the basics: making them easier to operate. The adjustable control panel, user-friendly GUI and status monitoring all simplify operation, which speeds up your workflow.

At-a-Glance Status Monitoring

You can check the unit's status via a web browser to get comprehensive information. It displays operating status, provides percentage figures for the levels of all four toners and shows the size and type of paper in each tray, as well as how full the trays are. You can also view scanned images, check the network configuration, set the display language and access relevant links.



Device Configuration

Web Status Monitor

Safer Document Storage Handling

Hard Disk Data Erasing

With this security function, the image data of each completed job on the hard disk can be automatically made unreadable by overwriting zeros and random data. It can also erase the entire hard disk, including image data and address book data, which may be company-confidential information, when the time comes for the machine to be retired.

User Authentication

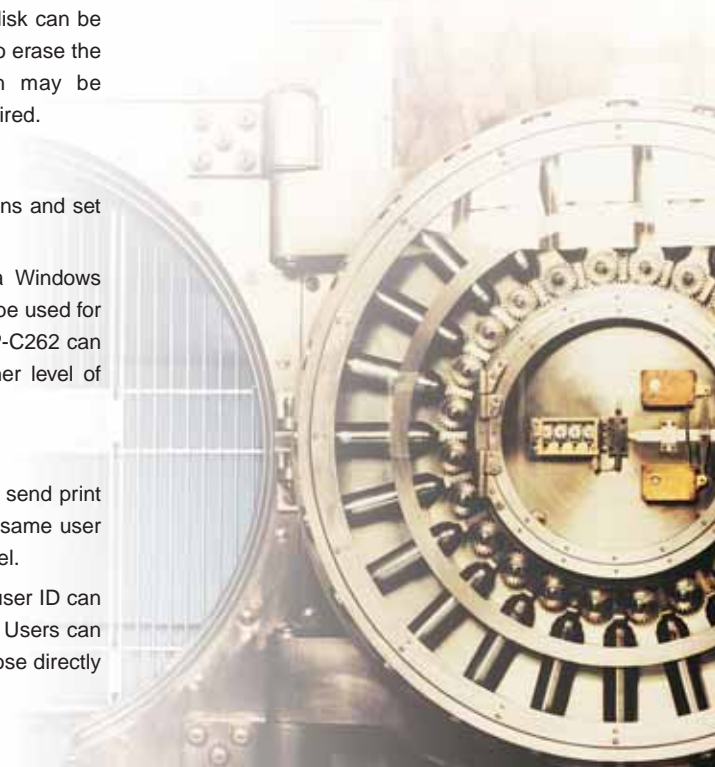
Up to 1,000 department codes can be programmed to specify accessible functions and set the usage limitations for both B/W and color printing, copying, scanning or faxing.

The DP-C322 and DP-C262 can also utilize user credentials registered in a Windows Active Directory server database. Since the same user name and password can be used for network login from the PC, network user authentication for the DP-C322 and DP-C262 can be easily implemented. The combination of these two features creates a higher level of access security.

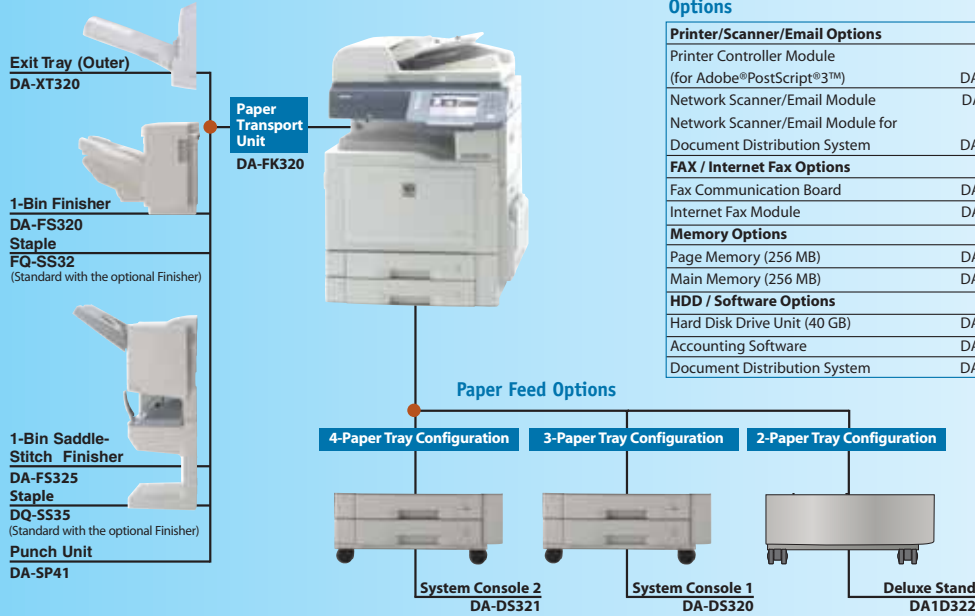
Mailbox and Secure Mailbox Print

To avoid exposing confidential information on the printer's output tray, users can send print jobs with a user ID to the shared "mailbox" on the hard disk. Print jobs with the same user ID cannot be printed until the matching user ID is entered from the operation panel.

"Secure Mailbox" takes this to the next level. A password accompanied with the user ID can be entered on the printer driver screen before a print job is sent to the machine. Users can safely print out saved documents by entering the password at any time they choose directly on the control panel.



Options & Specifications



Options

Printer/Scanner/Email Options	
Printer Controller Module (for Adobe®PostScript®3™)	DA-MC320
Network Scanner/Email Module	DA-NS320
Network Scanner/Email Module for Document Distribution System	DA-NS321
FAX / Internet Fax Options	
Fax Communication Board	DA-FG320
Internet Fax Module	DA-NF320
Memory Options	
Page Memory (256 MB)	DA-PMN56
Main Memory (256 MB)	DA-EMN56
HDD / Software Options	
Hard Disk Drive Unit (40 GB)	DA-HD32
Accounting Software	DA-WA10
Document Distribution System	DA-WR10

Consumables

Toner	
Toner Cartridge (Black)	DQ-TUN28K
Toner Cartridge (Cyan)	DQ-TUN20C
Toner Cartridge (Magenta)	DQ-TUN20M
Toner Cartridge (Yellow)	DQ-TUN20Y
Toner Waste Container	
Toner Waste Container	DQ-BFN45
OPC Drum Unit	
OPC Drum Unit (Black)	DQ-UHN36K
OPC Drum Unit (Color)	DQ-UHN30
Staple	
Staples for DA-FS325	DQ-SS35
Staples for DA-FS320	FQ-SS32

General

Type	Semi Console
Copy/Print Process	Laser Indirect Electrostatic
Developing Process	Dry Dual Component
Fusing Method	Induction Heating (IH) System
Inverting Automatic Document Feeder	70 sheets (8.5" x 11", 20 lb)
Paper Feed	Std. 550-sheet paper tray unit x 2 + 50-sheet bypass Optional paper tray: 550 sheets x 2 Max. 2,250 sheets with option
Paper Weight	Paper Tray: 18 to 28 lb (64 to 105 g/m ² - Bond Paper) Bypass: 15 to 40 lb (55 to 220 g/m ² - Bond Paper) 90 to 121 lb (Index Paper)
Power Requirements	AC 120 V, 50/60 Hz, 12 A
Power Consumption	Max.: Less than 1.44 kW Power saver mode: Approx. 65 W Sleep mode: Approx. 25 W
Warmup Time (68°F/20°C)	Approx. 15 sec. (Main power switch ON)
Dimensions (W x D x H) ¹	25.8" x 32.5" x 36.7" (656 mm x 825 mm x 933 mm) (Excluding optional equipment) (Including Automatic Document Feeder and ADF mounting bracket)
Weight (Excluding optional equipment) ¹	Approx. 360.8 lb (164 kg)

Digital Copier

First Copy Time	B/W: Approx. 6.2 sec. (8.5" x 11") (DP-C322) Approx. 7.3 sec. (8.5" x 11") (DP-C262) Color: Approx. 12 sec. (8.5" x 11")
Resolution	Max. 600 dpi
Gray Scale	256 steps
Multi Copy Speed ²	B/W: Up to 32 cpm (DP-C322) Up to 26 cpm (DP-C262) Color: Up to 21 cpm
Maximum Original Size	11" x 17"
Copy Size	11" x 17" - 5.5" x 8.5"
Copy Ratio	Enlargement: (fixed) 200%, 155%, 129%, 121% Reduction: (fixed) 79%, 77%, 65%, 61%, 50%
Zoom (variable)	25% - 400% (in 1% increments)
Multiple Copy	1 to 999, Automatic reset to 1
Exposure Control	Text, Text / Photo, Photo
Main Memory	Standard: 256 MB Max.: 512 MB
Sort Memory	Standard: 128 MB Max.: 12 GB

Printer

Network Printer Interface	Ethernet 10Base-T/100Base-TX
Communication Protocol	TCP/IP (LPD [Port9100/Raw], SNMP, DHCP, SMB), IPX/SPX (NDS, Bindery, NDPS), AppleTalk (PS), IPP (PCL, PS) IPv4/IPv6 Dual Stack
Local Printer Interface	USB 2.0
Printer Language (standard)	PCL 6 Emulation
(option)	Adobe® PostScript®3™ ³
Printing Speed ²	B/W: Up to 32 ppm (DP-C322) Up to 26 ppm (DP-C262) Color: Up to 21 ppm
Paper Size	Paper Tray: 11" x 17" - 5.5" x 8.5" Bypass: 12" x 18" - 5.5" x 8.5"
Printing Resolution	1,200 dpi x 1,200 dpi ⁴ , 600 dpi x 600 dpi (PCL, PS)
Printer Memory	Standard: 256 MB Max.: 512 MB
PCL/PS Spool Memory	2 GB
Compatible Client Operating Systems	Windows® XP/2000, 98, Me, Windows NT® 4.0, MacOS 8.6-10.3 ³
Compatible Server Operating Systems	Windows® 2000/Server 2003, Windows NT® 4.0, UNIX/Linux, AS/400

Network Scanner / Scan-to-Email (Option)

Network Scanner Interface	Ethernet 10Base-T/100Base-TX
Communication Protocol	TCP/IP (LPR, FTP), SMTP, LDAP IPv4/IPv6 Dual Stack (IPv6: HTTP, SMTP)
Maximum Scanning Size	11" x 17"
Scanning Speed	B/W: Up to 32 originals/minute (Letter) Color: Up to 31 originals/minute (Letter)
Scanning Resolution	200 dpi x 200 dpi, 300 dpi x 300 dpi, 400 dpi x 400 dpi, 600 dpi x 600 dpi
Compatible Client Operating Systems	Windows® XP/2000/Server 2003, 98, Me, Windows NT® 4.0
Data Format	B/W: TIFF, PDF Color: JPEG, PDF, Compressed PDF (300 x 300 dpi only)
Address Book Capacity (including Network Scanner, Scan-to-Email, G3 Fax and Internet Fax)	1000 stations

G3 Fax (Option) / Internet Fax (Option)

Compatibility	G3 Fax: ITU-T Group 3, ECM Internet Fax: ITU-T.37, IETF RFC 3965
Communication Protocol	TCP/IP SMTP, POP3, MIME, LDAP (Internet Fax)
Modem Speed	33.6 kbps - 2.4 kbps with automatic fallback (G3 Fax)
Coding Scheme	JBIG / MMR / MR / MH (Conforms to ITU-T Recommendations)
Scanning Speed ⁵	Approx. 0.7 sec. (8.5" x 11" portrait in Standard or Fine mode with ADF)
Transmission Speed ⁶	Approx. 2.9 sec.
Scanning Resolution	Standard: 203 dpi x 98 lpi (8 dots/mm x 3.85 lines/mm) Fine: 203 dpi x 196 lpi (8 dots/mm x 7.7 lines/mm) Super Fine: 406 dpi x 391 lpi (16 dots/mm x 15.4 lines/mm) 600 dpi: 600 dpi x 600 dpi
Maximum Original Size	11" x 17"
Effective Scanning Width	11.5" (292 mm)
Recording Resolution	600 x 600 dpi
Standard Memory ⁷	3 MB (approx. 180 pages based on ITU-T Image No.1 using Standard Resolution)
Optional Memory	64 MB - 1 GB (SD card)
Data Format	TIFF-FX (Profile S/F/J) (Internet Fax)

Notes

- Dimensions and weight are approximate.
- Speeds are contingent upon applications, machine configuration, and status. Individual speeds may vary.
- Requires optional Printer Controller Module (for Adobe PS).
- Requires optional page memory.
- Scanning speed applies to the feeding process from the top to the end of a single page test chart. The time for the feeding process does not include the time that it takes for the top edge of the page to reach the scanning point and page ejection. Time for entire storing process is not applied.
- Transmission time applies to memory transmission of text data using only ITU-T Image No.1 between the same models at maximum modem speed. Transmission time may vary in actual usage. Usually public telephone lines can only support communication speeds of 28.8 Kbps or lower. Via PBX, transmission speed may fall back to a lower speed.
- Based on ITU-T Image No.1 scanned in Standard mode.

Design and specification are subject to change without notice.

Microsoft® Windows® and Windows NT® are registered trademarks of Microsoft Corporation. Adobe® PostScript®, PostScript®3™, PDF and PostScript logo® are trademarks of Adobe Systems, Inc. Novell NetWare® and Novell Directory Services® are registered trademarks of Novell, Inc., in the United States and other countries.

PCL® is a registered trademark of Hewlett-Packard. WORKIO® is a registered trademark of Matsushita Electric Industrial Co., Ltd. All other brand or product names are the property of their respective holders.

IPv6 Ready Logo is the international IPv6 product's certification program managed by the IPv6 Ready Logo Committee.

ISO 9001 Quality Management System

Our business processes which produce document, information and network products, from manufacturing to marketing, conform to ISO9001 Quality Management systems standard. Design, development, manufacture, installation, repair and maintenance of document, information and network products, their associated devices and consumables. In addition, the plants outside Japan have acquired ISO 9001 certification.



As an Energy Star® Partner, Panasonic has determined that this product meets the Energy Star® Guidelines for energy efficiency.



Panasonic®

Panasonic Digital Document Company
Unit of Panasonic Corporation of North America

Two Panasonic Way, Secaucus, NJ 07094
For a local dealer, please call 1-800-742-8086
panasonic.com/c3