



MC9500 Series

EMC Configuration and Accessories Guide

*Designed to assist customers and partners with model and
configuration guidance*



MC9500 Series

- CONFIGURATION AND ACCESSORY GUIDES are available on [The Source](#) and [Partner Central](#)
- Also see www.zebra.com/mc9500 and the MC9500-K Configuration and Accessories Guide
- MC9500 Series is comprised of 4 Models:
 - MC9590-Integrated voice and data models, without WAN (with and without camera)
 - MC9596-Integrated voice and data models, with GSM/HSDPA (with and without camera)
 - MC9598-Integrated voice and data models, with CDMA/EVDO (with and without camera)
 - MC959B-Data only models (with and without camera)
- With 57 total Configurations

Find Product Information in the **EMC Product Portfolio** on [The Source](#) and [Partner Central](#)



The image shows a screenshot of the 'Partner Central' website. At the top, there is a blue header with the text 'Partner Central'. Below this, the main content area has a white background. On the left side, there is a list of links under the heading 'EMC PRODUCT PORTFOLIO'. The links include: 'EMC Resources', 'Zebra Solutions At A Glance', 'Enterprise Mobile Computing', 'Knowledge Worker Portfolio', 'Line Worker Portfolio', 'EMC Software & Solutions', 'Topical Content', 'MSI OS Strategy', and 'The Value of Enterprise Class Products'. On the right side, there are four small images with labels: 'CUSTOMER FACING' (showing two women at a counter), 'FIELD MOBILITY' (showing a person in a green shirt using a device in a store), 'TASK SPECIFIC' (showing a person in a white lab coat using a device), and 'INDUSTRIAL MOBILITY' (showing a person in an orange safety vest using a device on a truck).

All MC9500 series accessories are compatible and backward compatible including: cradles, holsters and cables.

MC9500 Series Configuration Matrix

CONFIGURATION OPTIONS:	MC95XX	OPTION	DESCRIPTION
WAN Option	MC9590-xxxxxxxx	0	WLAN 802.11 a/b/g, No WAN
	MC9596-xxxxxxxx	6	WLAN 802.11 a/b/g, With GSM/HSDPA
	MC9598-xxxxxxxx	8	WLAN 802.11 a/b/g, With CDMA EVDO RevA
	MC959B-xxxxxxxx	B	WLAN 802.11 a/b/g, HSUPA + CDMA EVDO RevA
Form Factor	MC959x-Kxxxxxxxx	K	Brick
Data Capture options (Scanner)	MC959x-xAxxxxxx	A	1D Laser SE950 without camera
	MC959x-xBxxxxxx	B	2D Imager SE4500 without camera
	MC959x-xCxxxxxx	C	1D Laser SE950 with camera
	MC959x-xDxxxxxx	D	2D Imager SE4500 with camera
WAN Carrier options	MC959x-xx0xxxxxx	0	None
	MC959x-xxAxxxxxx	A	Penta-band GSM
	MC959x-xxBxxxxxx	B	Verizon
	MC959x-xxCxxxxxx	C	Sprint
	MC959x-xxGxxxxxx	G	Multicarrier
Operating System Options	MC959x-xxxAxxxxx	A	WM6.1 Classic
	MC959x-xxxBxxxxx	B	WM6.1 Professional
	MC959x-xxxDxxxxx	D	WM6.5 Classic
	MC959x-xxxExxxxx	E	WM6.5 Professional
Operating System Language	MC959x-xxxxAxxxx	A	English
Product Feature: User Input/Keyboard	MC959x-xxxxBxxx	B	VGA Color and 52 key
	MC959x-xxxxCxxx	C	VGA Color and 43 key
	MC959x-xxxxDxxx	D	VGA Color and 29 key (Phone)
	MC959x-xxxxExxx	E	VGA Color and 29 key (Calculator)
	MC959x-xxxxFxxx	F	VGA Color and 29 key (Fingerprint swipe)
	MC959x-xxxxJxxx	J	VGA Color and 43 key (Alpha-prim Bezel-less)
Memory/GPS/RFID options	MC959x-xxxxxx001xx	001	128MB/512MB GPS
Special Character Support options	MC959x-xxxxxxxx00	00	None
	MC959x-xxxxxxxxJP	JP	Japan

MC9500 Main Models



MC9500

- MC9590** WLAN 802.11 a/b/g, No WAN
 - WM 6.5 Classic
- MC9596** WLAN 802.11 a/b/g, GSM/HSDPA
 - WM 6.5 Professional
- MC9598** WLAN 802.11 a/b/g, CDMA EVDO RevA
 - WM 6.5 Professional
- MC959B** WLAN 802.11 a/b/g, HSUPA + CDMA EVDO RevA
 - WM 6.1 Professional

** Replacements of WWAN Kits are available:

- **WWAN-MC95KA001-001**: WWAN:MC95,HSDPA
- **WWAN-MC95KA001-010**: WWAN:MC95,HSDPA,10PK
- **WWAN-MC95KB002-001**: WWAN:MC95,EVDO-Verizon (US only)
- **WWAN-MC95KB002-010**: WWAN:MC95,EVDO-Verizon,10PK
- **WWAN-MC95KB003-001**: WWAN:MC95,EVDO-Sp (US Only)
- **WWAN-MC95KB003-010**: WWAN:MC95,EVDO-Sp,10PK
- **WWAN-MC95KDW-001**: WWAN:MC95,DUAL WAN DATA ONLY
- **WWAN-MC95KDW-010**: WWAN:MC95,DUAL WAN DATA ONLY 10PK

MC9500 Keypads

43 Key, Alpha Prime

Lowercase alpha characters

Spare keypad part number:
KYPD-MC95MF000-000
KY10-MC95MF000-000 (10PK)

52 Key, Alphanumeric Wide

Lowercase alpha characters
and numeric

Spare keypad part number:
KYPD-MC95ME000-000
KY10-MC95ME000-000 (10PK)

29 Key, Numeric Calc

Numeric

Spare keypad part number:
KYPD-MC95MH000-000
KY10-MC95MH000-000 (10PK)

29 Key, Numeric Telephony

Numeric

Spare keypad part number:
KYPD-MC95MG000-000
KY10-MC95MG000-000 (10PK)



** Other available variants for Keyboards:

- **KYPD-MC95250-01R:** MC95 5250 Term Emul
- **KYPD-MC9500TE-01R:** MC95 Terminal Emul
- **KY10-MC95250-10R:** MC95 5250 Term Emul, 10PK
- **KY10-MC9500TE-10R:** MC95 Terminal Emul10PK

All replacement keypads are available as snap on, can be changed on site, without sending it to service depot.

MC9500 Data Capture Methods

Scan Engines

SE950

- 1D Standard Range Laser scanner
- Highly intuitive and accurate aiming line
- Typical read range:
 - 20 mil barcode: 83cm (code39)
 - 40 mil barcode: 91cm (code39)

SE4500

- 1D/2D Imager module
- Provides omni directional scanning for 1D and 2D codes.
- Laser crosshair aimer with bright center dot
- Also **HD** (high density) variant available for **DPM** codes.
- Typical read range:
 - 20 mil: 62 cm (code39)
 - 15 mil: 37 cm (PDF417, 2D)



SE950 Scan Engine



SE4500 Scan Engine





MC9500 Accessories Guide



Step 1: Choose a charging method



Single Slot Cradle

CRD9500-1000UR

Single slot cradle, requires power supply PWRS-14000-148R and 3 wire AC cord.



The single slot cradle can charge a MC9500 has a micro USB port. For spare battery charging must purchase one slot battery charger **SAC9500-1001CR** and DC “Y” cable **25-122026-01R** separate.

Single Slot Cradle Accessories



25-124330-01R

Micro USB Cable for the single slot cradle



PWRS-14000-148R

Power supply for single slot cradle: 100-240 VAC, 12VDC, 4.16A



23844-00-00R

US AC line cord, 7.5 feet long, grounded, three wire for power supplies.



25-122026-01R

2-way DC cable, required to connect the single slot cradle and one slot battery charger to one PWRS-14000-148R power supply.



SAC9500-1001CR

Single slot battery charger uses PWRS-14000-148R and 3 wire AC cord. Can also be combined with the single slot cradle using the 2-way DC cable.

Step 1: Choose a charging method



CRD9500-101UES
Single Slot Cradle Kit (INT)



The single slot cradle can charge a MC9500 has a micro USB port.



CRD9500-102UES
Single Slot and Spare Battery
Charger Kit (US)

Single Slot Cradle Kits

CRD9500-100UES (US)

Includes: Single Slot Cradle CRD9500-1000UR, Power Supply PWRS-14000-148R, and US AC Cord 23844-00-00R.

CRD9500-101UES (INT)

Includes: Single Slot Cradle CRD9500-1000UR and Power Supply PWRS-14000-148R (Must purchase country specific 3 wire AC Cord separately)

Single Slot Cradle and Battery Charger Kits

CRD9500-102UES (US)

Includes: Single Slot Cradle CRD9500-1000UR, Spare Battery Charger SAC9500-1001CR, "Y" Cable 25-122026-01R, Power Supply PWRS-14000-148R, and US AC Cord 23844-00-00R.

CRD9500-103UES (INT)

Includes: Single Slot Cradle CRD9500-1000UR Spare Battery Charger SAC9500-1001CR, "Y" Cable 25-122026-01R and Power Supply PWRS-14000-148R (Must purchase country specific 3 wire AC Cord separately)

Step 1: Choose a charging method



4 Slot Cradles:

CRD9500-4000CR 4 Slot Charge Only Cradle

CRD9501-4000ER 4 Slot Ethernet Cradle

 The 4 Slot Charge Only and Ethernet Cradles require Wall Mount KT-116362-01R OR Desk Mount KT-116363-01R. Optional Guide Cups KT-122014-01R available separately.

Additional Accessories for 4-slot Cradles



PWRS-14000-241R

Power supply for 4 slot cradles:90-264 VAC, 12VDC, 9A



50-16002-029R

DC cable provides power from the power supply to 4 slot cradles.



23844-00-00R

US AC line cord, 7.5 feet long, grounded, three wire for power supplies.



KT-116362-01R

Universal Wall Mounting Bracket, used for mounting the 4 slot cradle on a wall.



KT-116363-01R

Desk Mounting Bracket, used to place the 4-slot cradle on a flat surface.



KT-132400-01R

Mounting bracket for 19" rack, for 4 slot cradles.



KT-122014-01R

Optional Cradle Guides (4Pk), to be used with the 4 slot cradles.

Step 1: Choose a charging method



CRD9501-401CES
Four Slot Charge Cradle Kit
(Desk Ready)



CRD9501-421CES
Four Slot Charge Cradle Kit
(Wall Ready)

4-Slot Charge Cradle Kits

CRD9501-401CES (DESK)

Includes: 4Slot charge cradle CRD9500-4000CR, desk mount KT-116363-01R, guide cups KT-122014-01R, P/S PWRS-14000-241R, DC cord 50-16002-029R. Buy 3 wire AC cord separately.

CRD9501-421CES (WALL)

Includes: 4Slot charge cradle CRD9500-4000CR, wall mount KT-116362-01R, guide cups KT-122014-01R, P/S PWRS-14000-241R, DC cord 50-16002-029R. Buy 3 wire AC cord separately.

CRD9501-431CES (RACK)

Includes: 4Slot charge cradle CRD9500-4000CR, rack mount KT-132400-01R, guide cups KT-122014-01R, P/S PWRS-14000-241R, DC cord 50-16002-029R. Buy 3 wire AC cord separately.

4-Slot Ethernet Cradle Kits

CRD9501-401EES (DESK)

Includes: 4Slot Ethernet cradle CRD9501-4000ER, desk mount KT-116363-01R, guide cups KT-122014-01R, P/S PWRS-14000-241R, DC cord 50-16002-029R. Buy 3 wire AC cord separately.

CRD9501-421EES (WALL)

Includes: 4Slot Ethernet cradle CRD9501-4000ER, wall mount KT-116362-01R, guide cups KT-122014-01R, P/S PWRS-14000-241R, DC cord 50-16002-029R. Buy 3 wire AC cord separately.

CRD9501-431EES (RACK)

Includes: 4Slot Ethernet cradle CRD9501-4000ER, rack mount KT-132400-01R, guide cups KT-122014-01R, P/S PWRS-14000-241R, DC cord 50-16002-029R. Buy 3 wire AC cord separately.

Step 1: Choose a charging method



VCD9500-1000R

Vehicle Cradle with USB pass through (DB15 male connector)



VBC9500-1000R

Vehicle battery charger. For stand alone charging requires auto charge cable VCC0000-01R. For charging through the vehicle cradle requires jumper cable 25-1222028-01R and vehicle mounting plate KT-122012-01R.

! The vehicle cradle VCD9500-1000R and vehicle spare battery charger VBC9500-1000R are NOT compatible with the premium battery BTRY-MC95EXBA0-01

Additional Accessories for Vehicle Cradle and Other Vehicle Chargers



25-122028-01R

Vehicle jumper cable, required when using the vehicle cradle and the vehicle battery charger together.



KT-122012-01R

Vehicle mounting bracket, used for mounting the vehicle cradle and the vehicle battery charger side by side in a vehicle.



25-129710-01R

Adapter cable for vehicle cradle, USB to RS232 converter db 15 female to db 9 male.



25-157080-01R

Adapter cable for vehicle cradle, USB to RS232 converter



VCC0000-01R

Vehicle charge cable 12/24V barrel jack used to power the vehicle battery charger. (Can also charge the MC95 but requires adapter VAM9500-100R)

Step 2: Choose battery / battery charging accessories

Spare Batteries



BTRY-MC95IABA0

Standard Lithium Ion battery, 4800 mAh
Pack of 10 spare batteries is also available:
[\(BTRY-MC95IABA0-10\)](#)

BTRY-MC95EXBA0-01

Premium Lithium Ion battery, 7200 mAh
Pack of 10 spare batteries is also available:
[\(BTRY-MC95EXBA0-10\)](#)

Spare Battery Chargers



SAC9500-1001CR

Single Slot Battery Charger, uses power supply PWRs-14000-148R and 3 wire AC cord.



SAC9500-4001CR

4-slot battery charger, requires wall mount KT-116362-01R OR desk mount KT-116364-01R. Uses power supply PWRs-14000-148R and 3 wire AC cord.

Accessories for battery chargers



PWRs-14000-148R

Power supply for single and 4-slot battery chargers.



PWRs-14000-241R

Power supply used to power four 4-slot battery chargers.



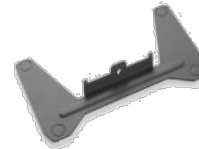
25-85992-01R

4-way DC cable to connect four 4-slot battery chargers to power supply PWRs-14000-241R



23844-00-00R

US AC line cord, 7.5 feet long, grounded, three wire for power supplies.



KT-116364-01R

Desk mounting bracket, used for mounting one 4 slot battery charger on a flat surface.



KT-116362-01R

Wall Mounting Bracket, used for mounting the 4-slot battery charger on a wall (fits 2).

Step 2: Choose battery / battery charging accessories

1-slot Charger

SAC9500-100CES
1Slot battery
charger (US)



SAC9500-100CES (US)
Includes: 1Slot battery
charger SAC9500-1001CR
and P/S PWRS-14000-148R
and US AC line cord 23844-
00-00R.

SAC9500-101CES (INTL)
Includes: 1Slot battery
charger SAC9500-1001CR
and P/S PWRS-14000-148R.
Buy 3 wire AC cord
separately.

Desk Mount Ready

SAC9500-400CES
Desk mount ready (US)



SAC9500-400CES (US)
Includes: 4Slot battery charger SAC9500-
4001CR, Desk Mount KT-11664-01R,
P/S PWRS-14000-148R and US AC cord
23844-00-00R.
SAC9500-401CES (INTL)
Includes: 4Slot battery charger SAC9500-
4001CR, Desk Mount KT-11664-01R and P/S
PWRS-14000-148R. Buy 3 wire AC cord
separately.

Wall Mount Ready

SAC9500-420CES
Wall mount ready (US)



SAC9500-420CES (US)
Includes: Four 4Slot battery chargers SAC9500-4001CR, Two
Wall Mounts KT-116362-01R, P/S PWRS-14000-241R, 4-way
DC cord 25-85992-01R and US AC cord 23844-00-00R.
SAC9500-421CES (INTL)
Includes: Four 4Slot battery chargers SAC9500-4001CR, Two
Wall Mounts KT-116362-01R, P/S PWRS-14000-241R, 4-way
DC cord 25-85992-01R. Buy 3 wire AC cord separately.

Telco Mount Ready



SAC9500-431CES
Telco mount ready (INTL)

SAC9500-230CES (US)
Includes: Two 4Slot battery chargers SAC9500-4001CR, 19"
Rack Mount, P/S PWRS-14000-241R, 4-way DC cord 25-
85992-01R and US AC cord 23844-00-00R.
SAC9500-430CES (US)
Includes: Four 4Slot battery chargers SAC9500-4001CR, Two
19" Rack Mounts, P/S PWRS-14000-241R, 4-way DC cord 25-
85992-01R and US AC cord 23844-00-00R.
SAC9500-431CES (INTL)
Includes: Four 4Slot battery chargers SAC9500-4001CR,
Two 19" Rack Mounts, P/S PWRS-14000-241R and 4-way DC
cord 25-85992-01R. Buy 3 wire AC cord separately.

Step 3: Choose cables/adapters

USB/Charge Cable



25-116365-03R
USB/charging cable. Requires power supply PWRS-14000-148R and grounded AC cord for charging

Modem Cable



25-116367-03R
MC9500 modem adapter cable. Required to use the modem dongle, MDM9000-100R for analog connectivity.

Modem/Charge Cable



25-116370-02R
Modem adapter cable. Can be used to charge or with MDM9000-100R (Modem module) to simultaneously sync and charge.

DEX Cable



25-116366-03R
DEX cable, enables transmission of data between the MC95 and the customer's inventory system at the time of delivery.

Vehicle Charge Cable



VCA9500-02R
Auto charge cable, charges the MC95 or the vehicle battery charger. Includes adapter module VAM9500-100R.

VAM9500-101R
Spare adapter module, for use with the auto charge cable VCC0000-01R.

Headset Adapter Cable



25-155758-01R
MC95 headset adapter cable (quick disconnect). Required to attach the RCH51 rugged headset.

Step 4: Choose carrying accessories

Fabric Holster



SG-MC9521110-01R

Fabric holster , includes shoulder strap. It can also be used with a belt. For rotating head and straight shooter configurations.

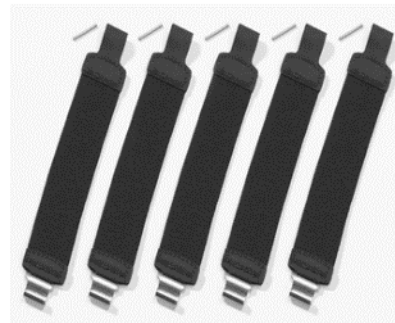
Plastic Holster



SG-MC9511110-01R

Plastic holster, secures to a belt. For rotating head and straight shooter configurations.

Hand Straps



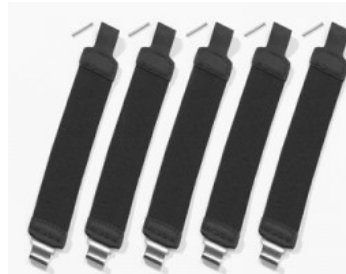
SG-MC9523043-01R

Spare hand straps with metal buckle (pack of 5).



SG-MC9523043-02R

Spare hand straps with plastic buckle (pack of 5). Includes rework kit.



SG-MC9523043-03R

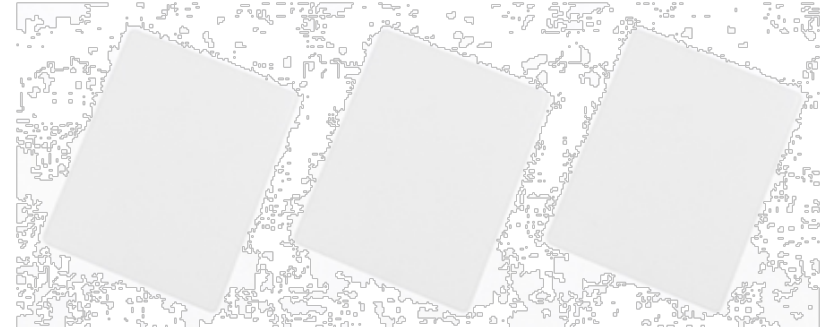
Spare hand straps with metal buckle and re-enforced stitch (pack of 5). Includes rework kit.

Step 5: Choose other accessories

Screen Protectors

KT-122010-01R

MC95 spare screen protectors.
Pack of 3



KT-122010-01R
Spare Screen Protectors (3Pk)

Stylus Kits

STYLUS-00006-03R Spare stylus (plastic non spring loaded) 3 pack

STYLUS-00006-09R Spare stylus (plastic non spring loaded) 9 pack

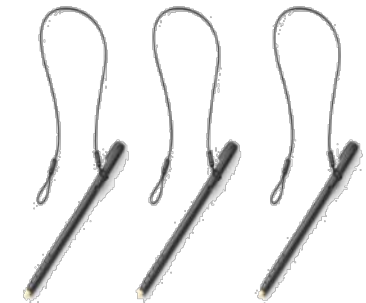
STYLUS-00006-50R Spare stylus (plastic non spring loaded) 50 pack

KT-122016-03R Spare spring loaded stylus
3 Pack

KT-122018-50R Spare spring loaded stylus
50 Pack



STYLUS-00006-03R
Plastic Stylus (3Pk)



KT-122016-03R
Spring Loaded Stylus (3Pk)



MC9500 IHV Guide



Step 6: Choose 3rd party accessories

Storage Options

ATP MicroSD Cards



AF1GUDI-MOT1-1P

ATP 1GB Industrial Grade (1 pack) microSD flash memory card designed and tested for rugged mobile computing and intensive program/erase operation. Also available at 10 pack option (Product ID **AF1GUDI-MOT1-10P**)

2GB, 4GB and 8GB storage options are available in single and 10 pack variants.

AF2GUDI-MOT1-1P- 2GB single pack

AF2GUDI-MOT1-10P- 2GB 10 packs

AF4GUDI-MOT1-1P- 4GB single pack

AF4GUDI-MOT1-10P- 4GB 10 packs

AF8GUDI-MOT1-1P- 8GB single pack

AF8GUDI-MOT1-10P- 8GB 10 packs

**Note: The ATP MicroSD cards can be ordered from Motorola

Connectivity Options

Portsmith USB to Ethernet Adapter



PSA1U1E

This compact, durable and efficient USB to Ethernet Adapter can quickly and easily add High Speed networking access to MC9500-K

Step 6: Choose 3rd party accessories

Trigger Handle

TIS Trigger Handle



23-95-09-TG-01

TIS Trigger handle for MC95, makes the use of the device as warehouse scanners significantly more ergonomic and comfortable

Holster for Trigger Handle

Agora Holster for Trigger Handle



SZ2764DW

Agora Trigger Handle Holster helps to cover, protect and carry the MC9500 while using the TIS trigger handle



Step 6: Choose 3rd party accessories

Brodit/Proclip Vehicle Cradle



249001

Active Holder with Cigarette
Lighter Cable. Compatible
with MC95.

Brodit/Proclip Vehicle Cradle



249002

Active Holder for Fixed
Installation. Compatible with
MC95.