



**Project – JBVNL  
Period End and Project Closure  
End User Manual – Project System**



**Jharkhand Bijli Vitran Nigam Limited.**

# **PROJECT SYSTEM**

# **USER MANUAL**

**Period End and Project Closure**





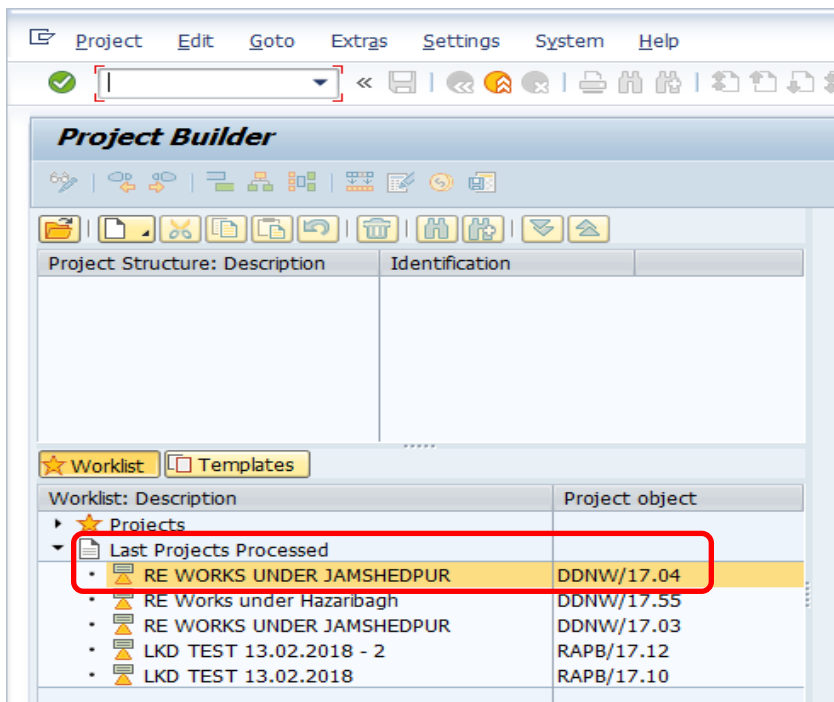
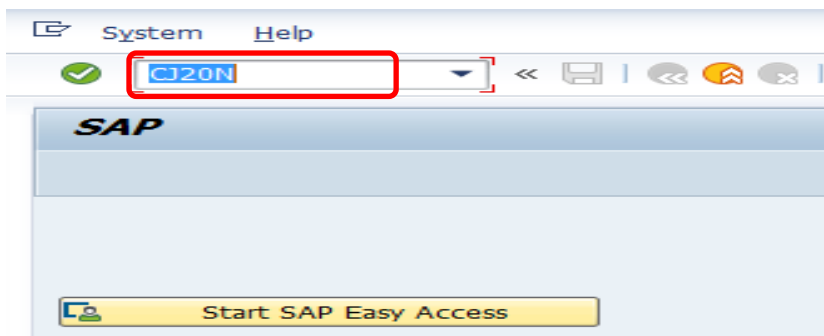
# Project – JBVNL Period End and Project Closure End User Manual – Project System



## Period End and Project Closure:

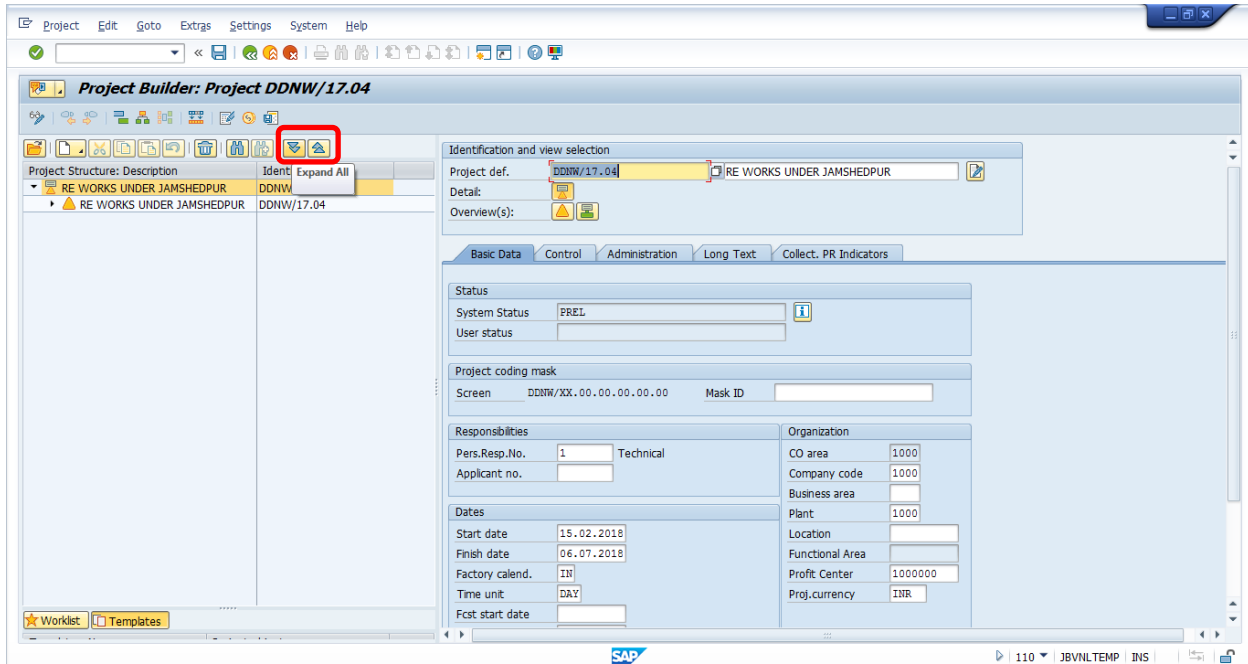
### 1.1 Period End Closing activities:

Step	Action
(1)	Tcode: CJ20N – Project Builder → Select project from Worklist and expand project structure



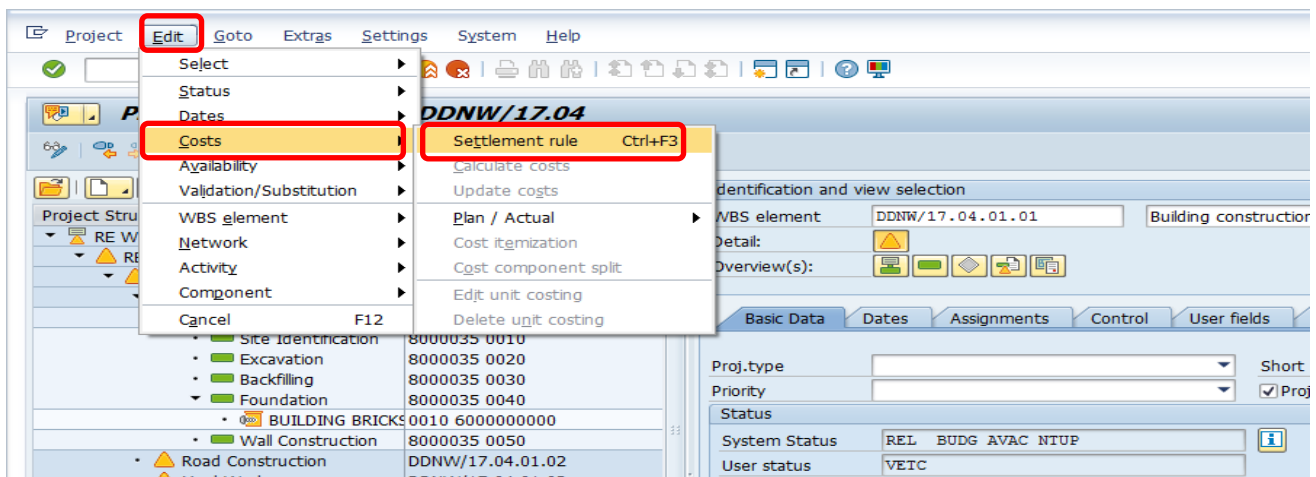


# Project – JBVNL Period End and Project Closure End User Manual – Project System



## 1.2 Period End Closing activities:

Step	Action
(1)	Select WBS Element → Select Edit TAB → Select Costs → Select Settlement rule





# Project – JBVNL Period End and Project Closure End User Manual – Project System



## 1.3 Period End Closing activities:

Step	Action
(1)	Select WBS Element→Select Edit TAB→Select Costs→Select Settlement rule→Settlement rule screen appears→Input Settlement Receiver WBS Element→input Percentage of the costs to be settled to→Select Goback button(green)→SAVE

Settlement rule Edit Goto System Help

WBS element: DDNW/17.04.01.01  
Building construction

Actual settlement

Cat	Settlement Receiver	Receiver Short Text	%	Equivalence no.	Amount	A..	Se...	No.	S
WBS	DDNW/17.04.01	Civil Works	100,00				PER	1	

Project Edit Goto Extras Settings System Help

Save (Ctrl+S)

Project Structure: Description Identification

- RE WORKS UNDER JAMSHEDPUR DDNW/17.04
  - RE WORKS UNDER JAMSHEDPUR DDNW/17.04
    - Civil Works DDNW/17.04.01
      - Building construction DDNW/17.04.01.01**
      - Building construction 8000035
        - Site Identification 8000035 0010
        - Excavation 8000035 0020
        - Backfilling 8000035 0030
        - Foundation 8000035 0040
          - BUILDING BRICKS 0010 6000000000
        - Wall Construction 8000035 0050
      - Road Construction DDNW/17.04.01.02
      - Yard Works DDNW/17.04.01.03

Identification and view selection

WBS element: DDNW/17.04.01.01 Building construct

Detail: [Warning Icon]

Overview(s): [Icons]

Basic Data Dates Assignments Control User fields

Proj.type: [Dropdown] Sho

Priority: [Dropdown] [Checked] P

Status

System Status: REL BUDG AVAC NTUP **SETC** [Info Icon]

User status: VEIC



## Project – JBVNL Period End and Project Closure End User Manual – Project System



Project **Edit** Goto Extras Settings System Help

- Select
- Status
- Dates
- Costs**
  - Settlement rule** Ctrl+F3
  - Calculate costs
  - Update costs
  - Plan / Actual
  - Cost itemization
  - Cost component split
  - Edit unit costing
  - Delete unit costing
- Availability
- Validation/Substitution
- WBS element
- Network
- Activity
- Component
- Cancel F12

DDNW/17.04

WBS element DDNW/17.04.02.01 Transformer

Settlement rule Edit Goto System Help

### Maintain Settlement Rule: Overview

WBS element DDNW/17.04.02.01  
Transformer

Actual settlement

Distribution rules							
Cat	Settlement Receiver	Receiver Short Text	%	Equivalence no.	Amount	A.. Se...	No. S...
WBS	DDNW/17.04.02	PSS Electrical works	100,00			PER	1

### 1.4 Period End Closing activities:

Step	Action
(1)	Tcode: CJ88 – Settlement of the project costs

Menu Edit Favorites Extras System Help

CJ88

### SAP Easy Access

Favorites

- ★ CJ20N - Project Builder
- ★ CJ13 - Project Actual Cost Line Items
- ★ MB24 - Reservation List
- ★ MB24 - Reservation List



Project – JBVNL  
Period End and Project Closure  
End User Manual – Project System



### 1.5 Period End Closing activities:

Step	Action
(1)	Select relevant WBS element to be settled → check box Test Run → check box Detail List → Click on Execute button (f8)

Settlement Edit Goto Extras Environment System Help

**Actual Settlement: Project/WBS Element/Network**

Project

or

WBS Element

or

Network

With hierarchy

With orders

Parameters

Settlement period  Posting period

Fiscal Year  Asset Value Date

Processing type

Processing Options

Test Run

Detail List

Check trans. data

Layouts



# Project – JBVNL

## Period End and Project Closure

### End User Manual – Project System



Menu: List Edit Goto Settings Extras Environment System Help

Actual Settlement: Project/WBS Element/Network Basic list

Selection

Selection Parameters	Value	Name
WBS Element	DDNW/17.04.02.01	Transformer
With orders	X	
With hierarchy	X	
Period	011	
Posting period	011	
Fiscal Year	2017	
Processing type	1	Automatic
Posting Date	28.02.2018	
Controlling Area	1000	JBVNL-Group of Company
Currency	INR	Indian Rupee

**Processing Options**

Selection Parameters	Value
Execution type	Settlement executed
Processing mode	Test run

Processing completed with no errors

Statistics

Processing category	Σ	Number
Settlement executed		3
No change		
Not relevant		
Inappropriate status		
Error		

Menu: List Edit Goto Settings Extras Environment System Help

Actual Settlement: Project/WBS Element/Network Detail list

Basic list | Sender | Receiver | Settlement rule | Save | Select

Detail list - Settled values

Senders	Short text: Sender	Receivers	Σ	ValCOArCur	Inform.
NWA 8000036 0010	Transformers	WBS DDNW/17.04.02.01	100.000,00		
NWA 8000036 0020	Repairs and Maintenance	WBS DDNW/17.04.02.01	10.000,00		
WBS DDNW/17.04.02.01	Transformer	WBS DDNW/17.04.02	110.000,00		
			<b>- 220.000,00</b>		



**Project – JBVNL**  
**Period End and Project Closure**  
**End User Manual – Project System**



### 1.6 Period End Closing activities:

Step	Action
(1)	Select relevant WBS element to be settled → Remove the check box Test Run → check box Detail List → Click on Execute button (f8)

Settlement Edit Goto Extras Environment System Help

**Actual Settlement: Project/WBS Element/Network**

Project

or

WBS Element

or

Network

With hierarchy

With orders

Parameters

Settlement period  Posting period

Fiscal Year  Asset Value Date

Processing type

**Processing Options**

Test Run

Detail List

Check trans. data

Layouts





## Project – JBVNL Period End and Project Closure End User Manual – Project System



Menu: List Edit Goto Settings Extras Environment System Help

Actual Settlement: Project/WBS Element/Network Basic list

Selection

Selection Parameters	Value	Name
WBS Element	DDNW/17.04.02.01	Transformer
With orders	X	
With hierarchy	X	
Period	011	
Posting period	011	
Fiscal Year	2017	
Processing type	1	Automatic
Posting Date	28.02.2018	
Controlling Area	1000	JBVNL-Group of Company

Processing Options

Selection Parameters	Value
Execution type	Settlement executed
Processing mode	Update run

Processing completed with no errors

Statistics

Processing category	Σ	Number
Settlement executed		3
No change		
Not relevant		
Inappropriate status		
Error		

Menu: List Edit Goto Settings Extras Environment System Help

Actual Settlement: Project/WBS Element/Network Detail list

Basic list | Sender | Receiver | Accounting documents | Settlement rule

Detail list - Settled values

Senders	Short text: Sender	Receivers	Σ	ValCOArCur	Inform.
NWA 8000036 0010	Transformers	WBS DDNW/17.04.02.01		100.000,00	
NWA 8000036 0020	Repairs and Maintenance	WBS DDNW/17.04.02.01		10.000,00	
WBS DDNW/17.04.02.01	Transformer	WBS DDNW/17.04.02		110.000,00	
				<b>Σ</b>	<b>220.000,00</b>

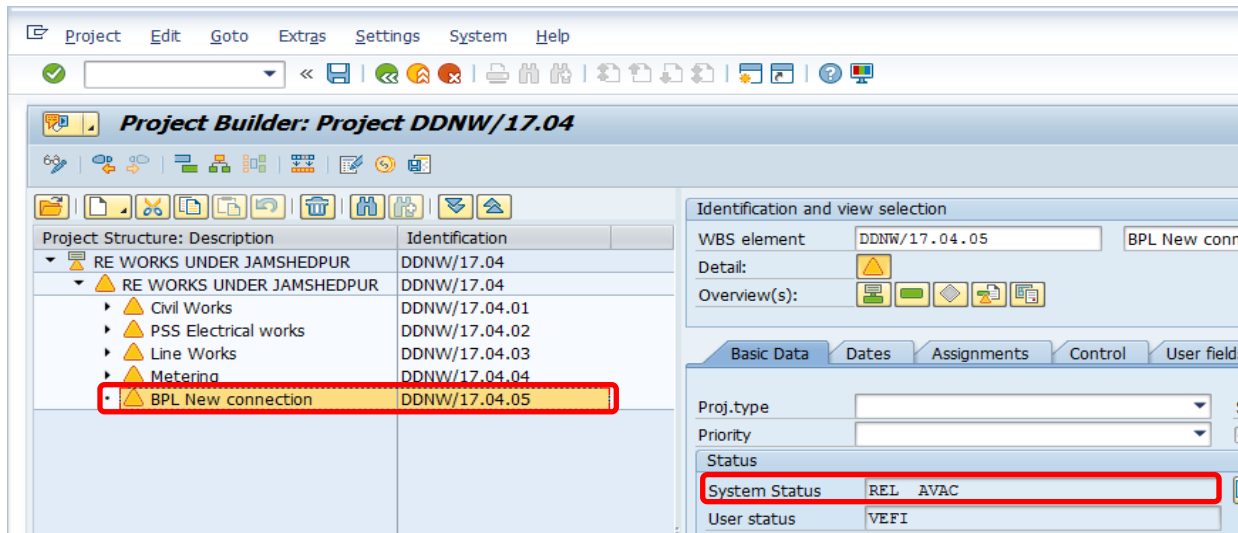


**Project – JBVNL  
Period End and Project Closure  
End User Manual – Project System**



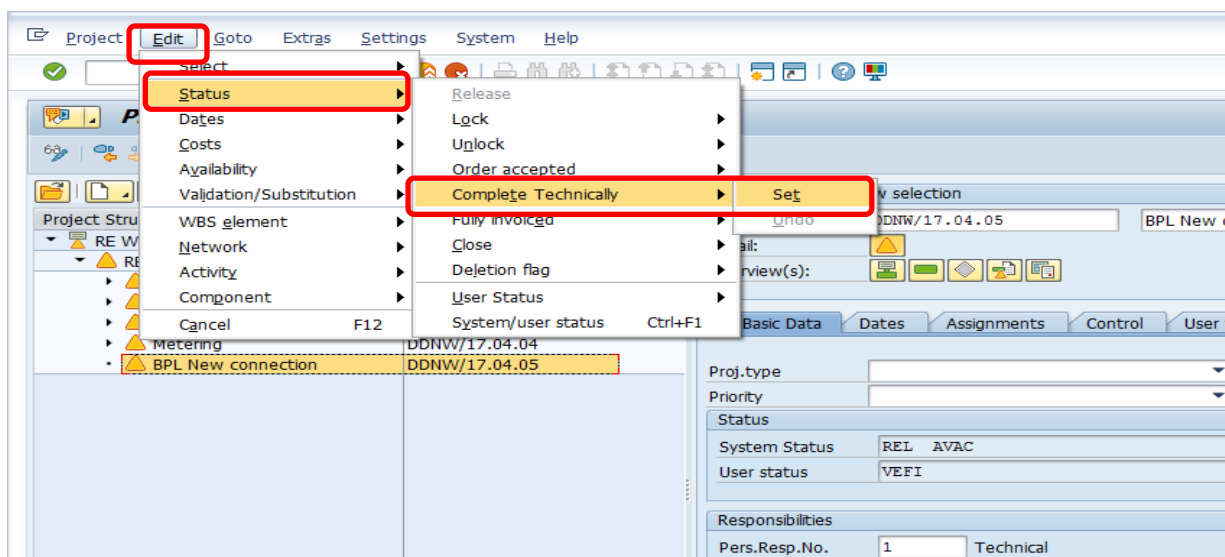
**1.7 Period End Closing activities:**

Step	Action
(1)	Tcode: CJ20N Project Builder – Changing System Status to Technically Completed



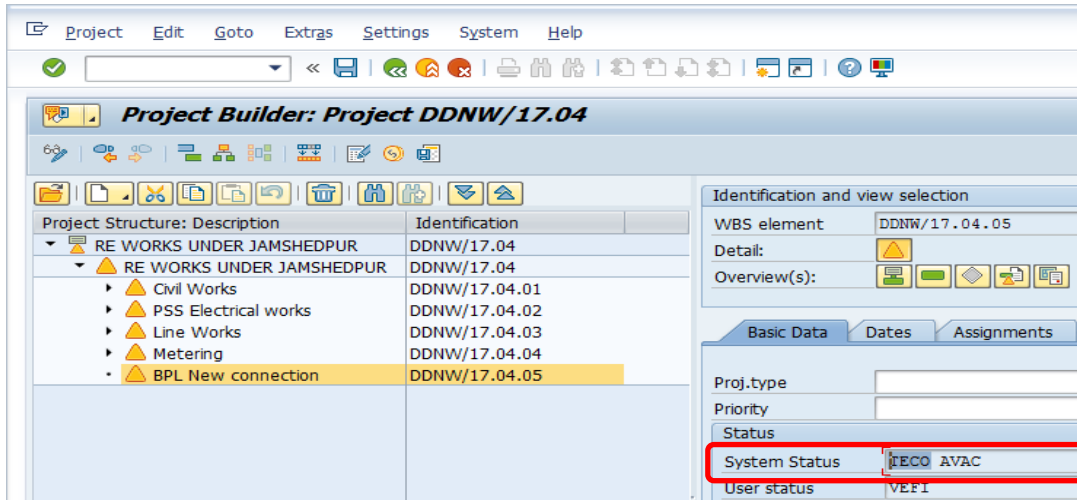
**1.8 Period End Closing activities:**

Step	Action
(1)	Select relevant WBS element → select Edit TAB → Select Status → Select Complete Technically to set the system status to TECO



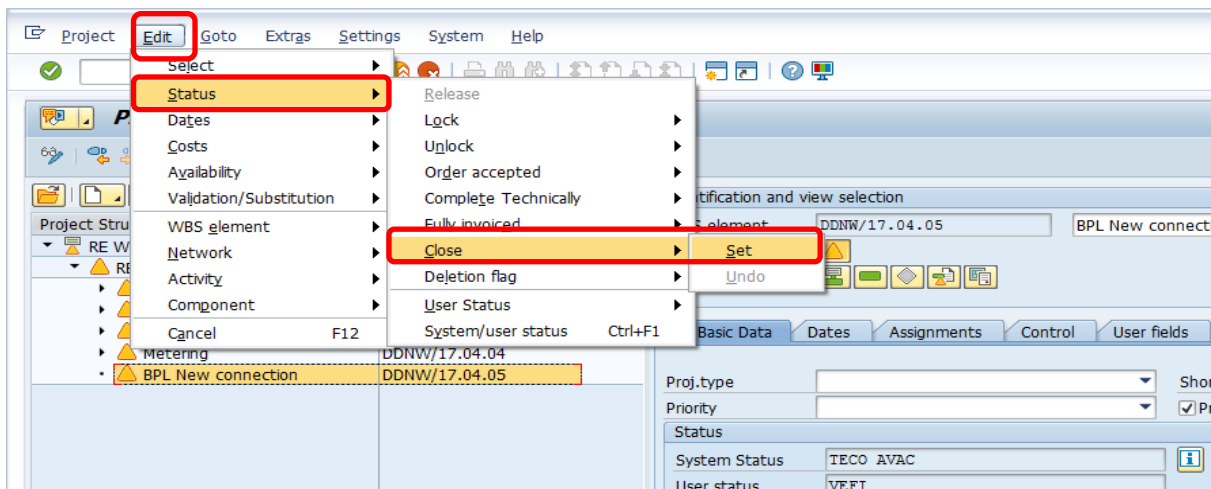


## Project – JBVNL Period End and Project Closure End User Manual – Project System



### 1.9 Period End Closing activities:

Step	Action
(1)	Select relevant WBS element → select Edit TAB → Select Status → Select CLSD to set the system status to CLSD (CLOSED)





# Project – JBVNL Period End and Project Closure End User Manual – Project System



Project Edit Goto Extras Settings System Help

Project Builder: Project DDNW/17.04

Project Structure: Description	Identification
RE WORKS UNDER JAMSHEDPUR	DDNW/17.04
RE WORKS UNDER JAMSHEDPUR	DDNW/17.04
Civil Works	DDNW/17.04.01
PSS Electrical works	DDNW/17.04.02
Line Works	DDNW/17.04.03
Metering	DDNW/17.04.04
BPL New connection	DDNW/17.04.05

Identification and view selection

WBS element: DDNW/17.04.05 BPL New co

Detail: [Warning Icon]

Overview(s): [Icons]

Basic Data Dates Assignments Control User file

Proj.type: [Dropdown]

Priority: [Dropdown]

Status

System Status: **CLSD\_AVAC**

User status: VEFI