

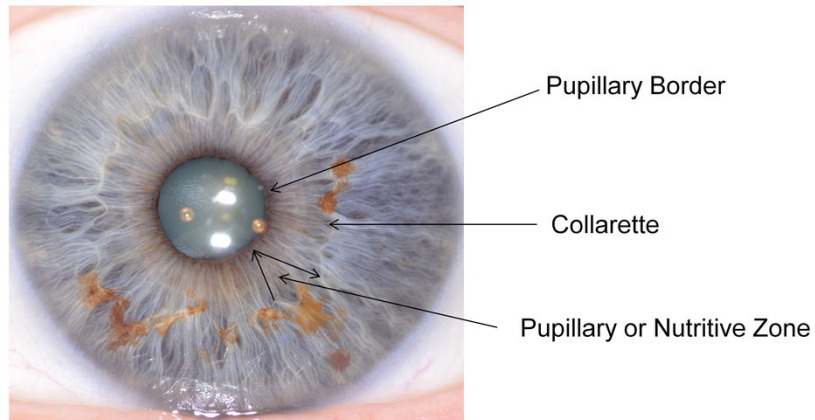


# The Collarette and Nutritive Zone

Welcome everyone!



## The Collarette and Nutritive Zone



### Thinning or Thickening of the Pupillary Border (Inner Pupillary Ruff)

- Pupillary Border can be reddish orange to brown in color
  - Black is ideal
  - Connected to the brain and spinal cord via the optic nerve
  - Filled with light-sensitive receptor cells
  - Located from pupillary border to collarette
  - Includes stomach and intestines
  - Sphincter muscle can be seen
1. Could mean Parkinson's (tremors when thick)
  2. Not a lot of HCL
  3. Betaine HCL helps for the stomach
  4. Central nervous system needs work.



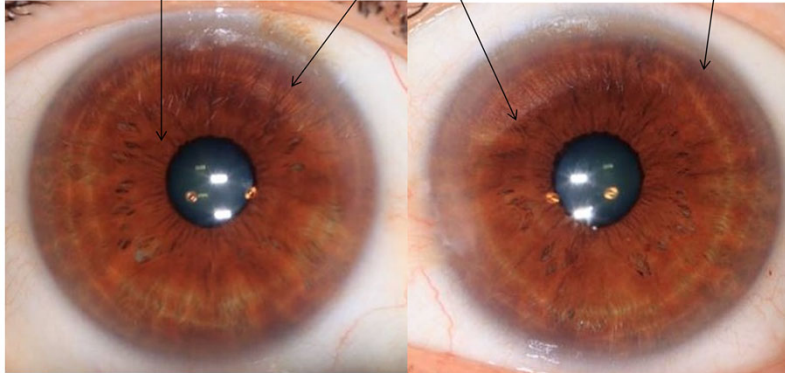
## The Collarette and Nutritive Zone

The iris can be divided into 3 major zones: Digestion, Utilization and Elimination

Digestion Occurs  
In Nutritive Zone

Utilization Occurs  
In Ciliary Zone

Elimination Occurs  
In Lymph & Skin



The iris can be divided into 3 zones:

1. Digestion
2. Utilization
3. Elimination

Digestion occurs in the nutritive zone

Utilization occurs in the ciliary zone

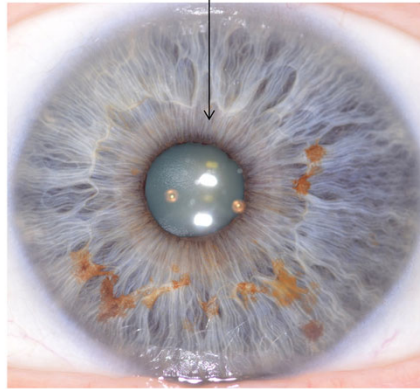
Elimination occurs in the lymph and skin



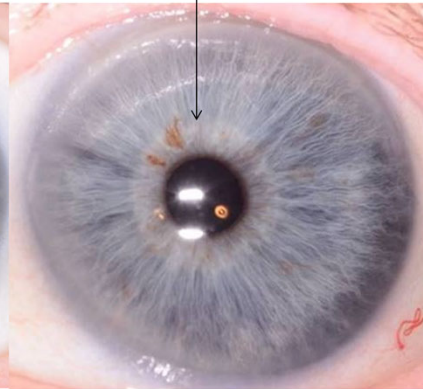
## The Collarette and Nutritive Zone

Underacid and Overacid Digestive System w/Sphincter Muscle

Underacid



Overacid



### Underacid and Overacid Digestive System with Sphincter Muscle:

When the stomach ring/sphincter muscle is darker than the iris it is considered underacid and there needs to be an adjustment to enzymes and HCL.

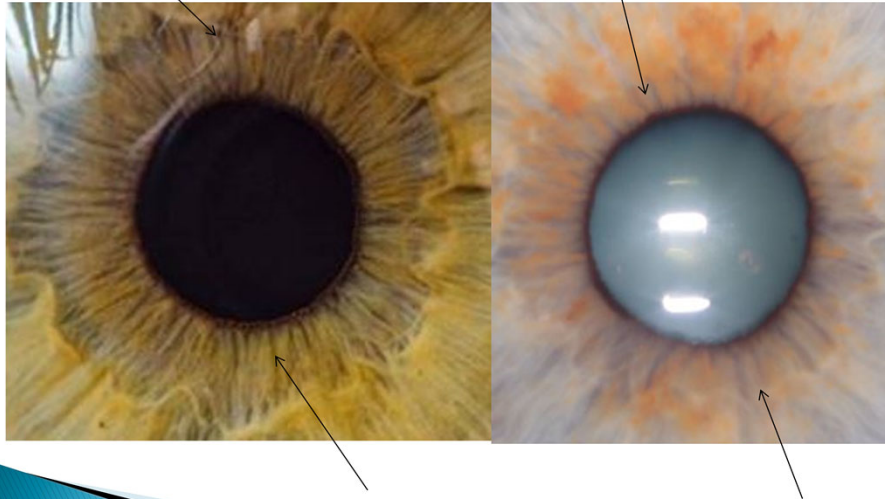
When the stomach ring/sphincter muscle is lighter than the iris it is considered overacid and there needs to be an adjustment to enzymes and HCL.

Symptoms would be the same: heartburn, reflux, food just sits in stomach, problems breaking down fats.



## The Collarette and Nutritive Zone

Cogwheel/Comb Teeth



### Cogwheel/Comb Teeth

This looks like bicycle spokes.

They look like tiny radial furrows or short spokes at the edge of the pupil. They show the fibers to be loose in the stomach area.

- Seen in Nutritive Zone
- Radial Furrows can begin here
- Introverted or Extroverted at times
- Environmental/Social issues can keep them on emotional rollercoaster
- When in balance will be flexible
- When out of balance won't tolerate high stressful situations



# The Collarette and Nutritive Zone

## Anatomy & Physiology of the Collarette



### Anatomy & Physiology of the Collarette

- Collarette surrounds Zone 2
- Digestion and absorption occurs here
- Centrally located around the pupil
- Landmark between two nervous systems (Parasympathetic and Sympathetic)
- Reveals information about the intestinal tract and integrity of the bowel



## The Collarette and Nutritive Zone

Placement of the Collarette

- ▶ Balanced/Normal
- ▶ Constricted/Tight
- ▶ Atonic/Floppy

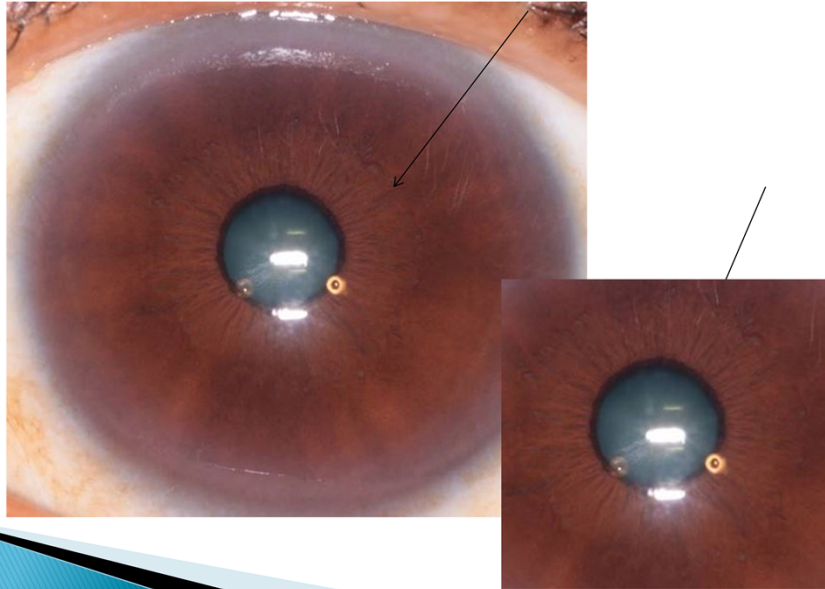
### Placement of the Collarette

- Balanced/Normal
- Constricted/Tight
- Atonic/Floppy



## The Collarette and Nutritive Zone

Placement: Balanced/Normal Collarette



### Balanced/Normal Collarette

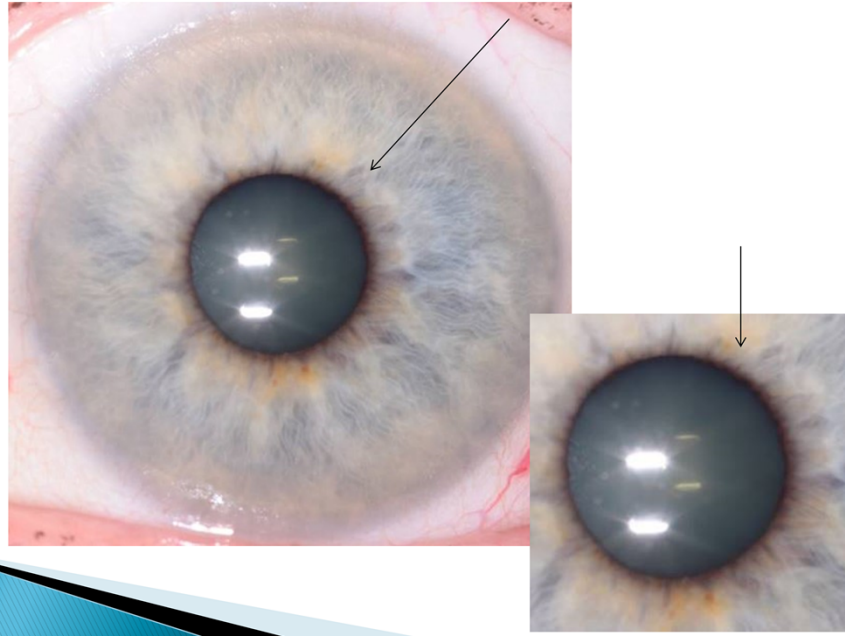
- Located about 1/3 the distance from the pupil
- Little to no negative effect on bowel activity
- Healthy normal bowel movements
- Inherited calmness and emotional balance





# The Collarette and Nutritive Zone

Placement: Constricted/Tight Collarette



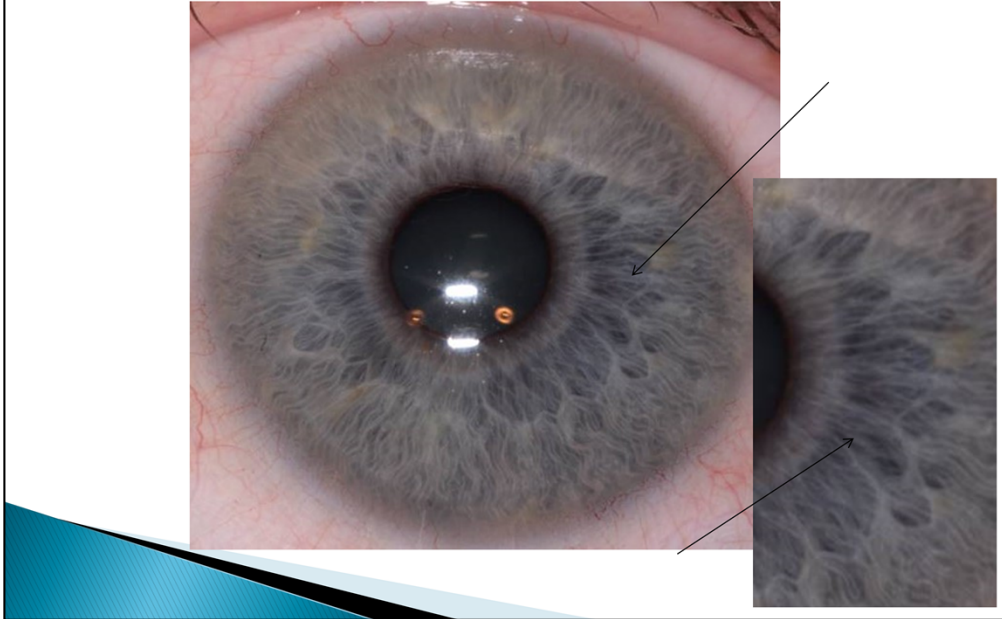
## Constricted/Tight Collarette

- Close to the pupil
- Bowel strictures constricting bowel flow may cause constipation
- Sensitive nature, holds onto feelings, and rarely discusses them
- Introverted nature



# The Collarette and Nutritive Zone

Placement: Atonic/Floppy Collarette



## Atonic/Floppy Collarette

- Open large appearance/lacks tone
- May be constipated/holds waste
- Usually a polyglandular subtype
- Extroverted nature
- Rarely timid
- Can be outgoing and expressive
- Enjoy standing up before a crowd



# The Collarette and Nutritive Zone

Quality/Appearance of the Collarette

- ▶ Absent
- ▶ Thin and Wispy
- ▶ Thick and Ropey

## Quality/Appearance of the Collarette

1. Absent
2. Thin and Wispy
3. Thick and Ropey



## The Collarette and Nutritive Zone

Quality/Appearance: Absent Collarette



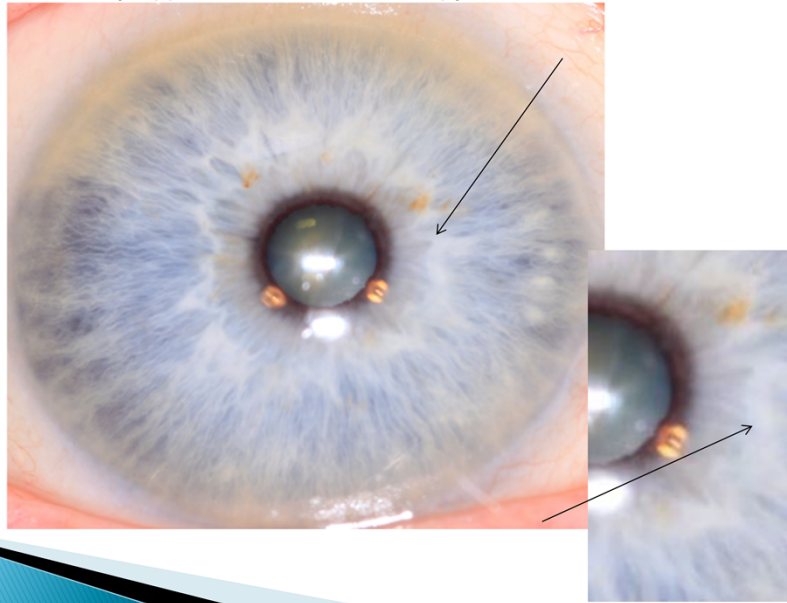
### Absent Collarette

- Appears non-existent or invisible
- May have central heterochromia or pigmentation
- Lacks digestive abilities
- More apt to become depleted in minerals
- Vitamin absorption may be weakened
- Shy/timid nature
- May be anxious and fearful of situations



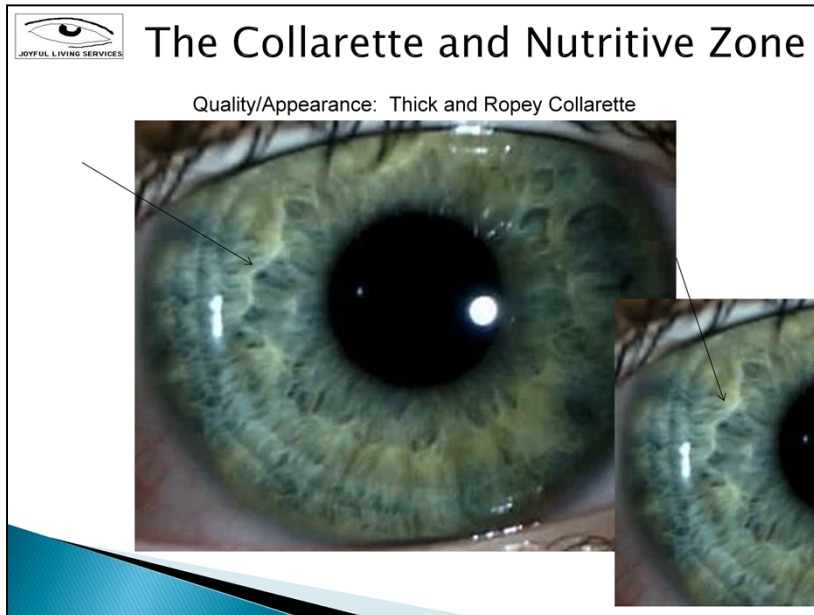
## The Collarette and Nutritive Zone

Quality/Appearance: Thin and Wispy Collarette



### Thin and Wispy Collarette

- Edge of collarette appears thin/wispy
- Lacks nerve energy
- Sensitive digestive system
- Sensitive nature/may desire peace in life
- Tires easily – needs more rest



### Thick and Ropey Collarette

- Thickened areas show extra nerve energy in the reaction field
- Overactive digestion/diarrhea and cramping
- May speak loudly/Announcer Voice
- Commanding presence
- Seem to have a lot of energy/active



# The Collarette and Nutritive Zone

## Shape of the Collarette

- ▶ Jagged or Star Shaped
- ▶ Double
- ▶ Intermittent

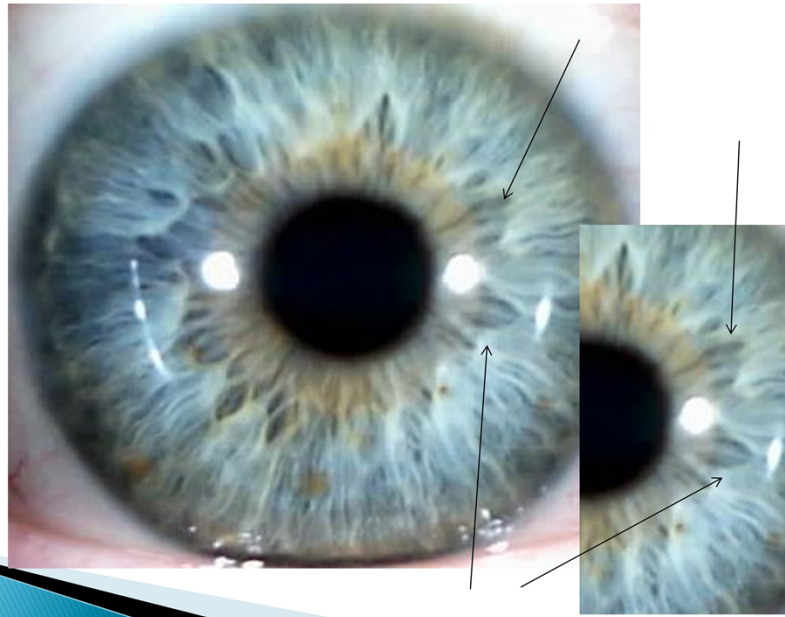
### Shape of the Collarette

1. Jagged or Star Shaped
2. Double
3. Intermittent



## The Collarette and Nutritive Zone

Shape: Jagged or Star Shaped Collarette



### Jagged or Start Shaped Collarette

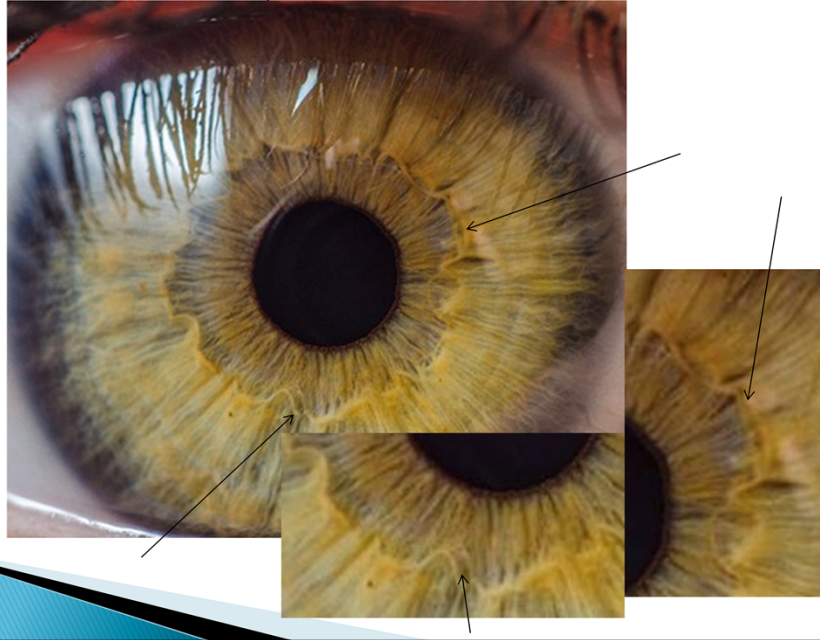
- Notice where points and valleys are located
- Lack nerve energy to organs/glands
- Unpredictable colon activity – constipation/diarrhea
- Prone to blood sugar imbalances





# The Collarette and Nutritive Zone

Shape: Double Collarette



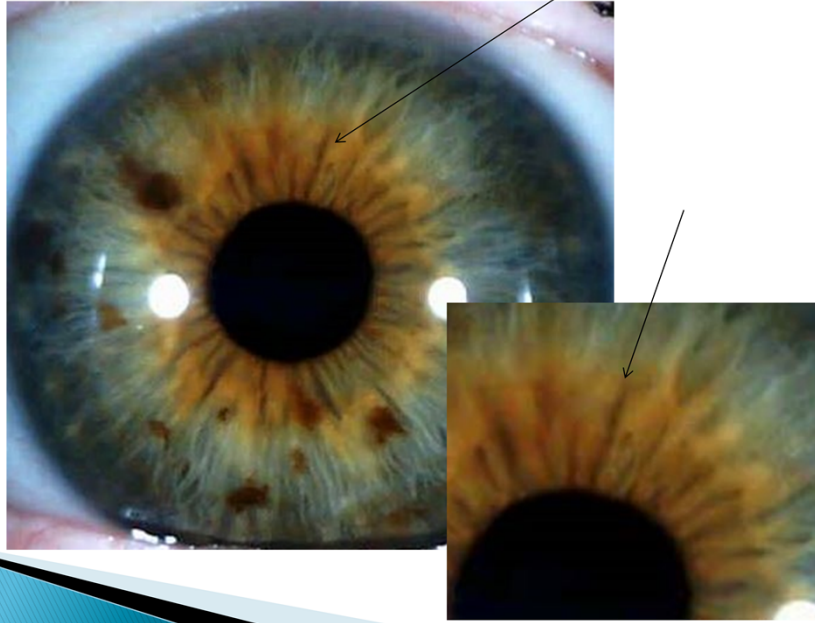
## Double Collarette

- Genetic sign
- Can appear at birth
- Collarette doubles in some areas
- Prone to abdominal spasms, hyper-motility and diarrhea
- Highly sensitive and usually very active



# The Collarette and Nutritive Zone

Shape: Intermittent Collarette



## Intermittent Collarette

- Collarette appears broken in areas
- Observe where the collarette breaks
- May lack energy in the digestive tract
- Underactive/overactive digestive tendencies
- Possible enzyme deficiencies
- Sluggish bowel creates bloating, cramping, and spasms after eating



# The Collarette and Nutritive Zone

## Shape of the Collarette

- ▶ Square
- ▶ Collarette w/Frontal Indentation
- ▶ Meerschaum
- ▶ Angle of Fuch's

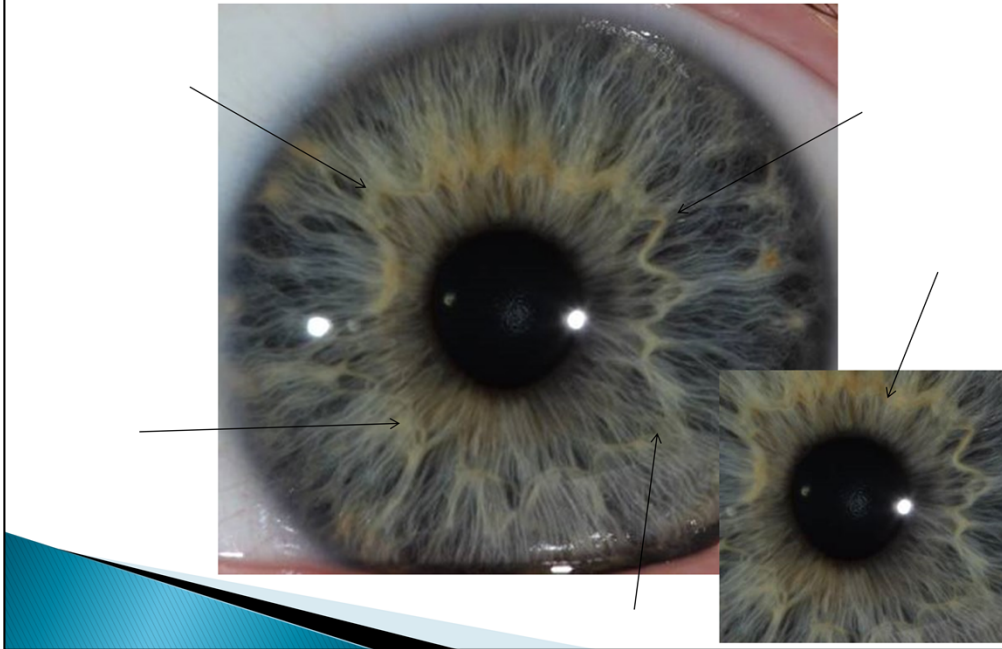
## Shape of the Collarette

1. Square
2. Collarette w/Frontal Indentation
3. Meerschaum
4. Angle of Fuch's



# The Collarette and Nutritive Zone

Shape: Square Collarette



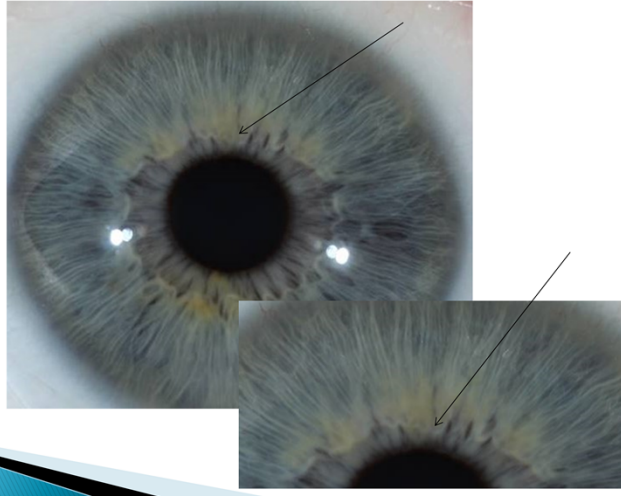
## Square Collarette

- Collarette can be seen at birth
- Family history/sugar metabolism issues
- Squaring can occur at pancreas reaction fields
- Compromised nerve energy to pancreas
- Mood swings are common
- Pancreas may become imbalanced
- Lowered immune function is common



## The Collarette and Nutritive Zone

Shape: Collarette with Frontal Indentation



### Collarette w/Frontal Indentation

- Genetic sign
- Collarette dips in area of transverse colon
- Suggests a potential for prolapse
- May increase pressure on lower organs: bladder, uterus, prostate, sigmoid colon, etc.

\*Check w/physician for proper diagnosis



# The Collarette and Nutritive Zone

Shape: Meerschaum Collarette



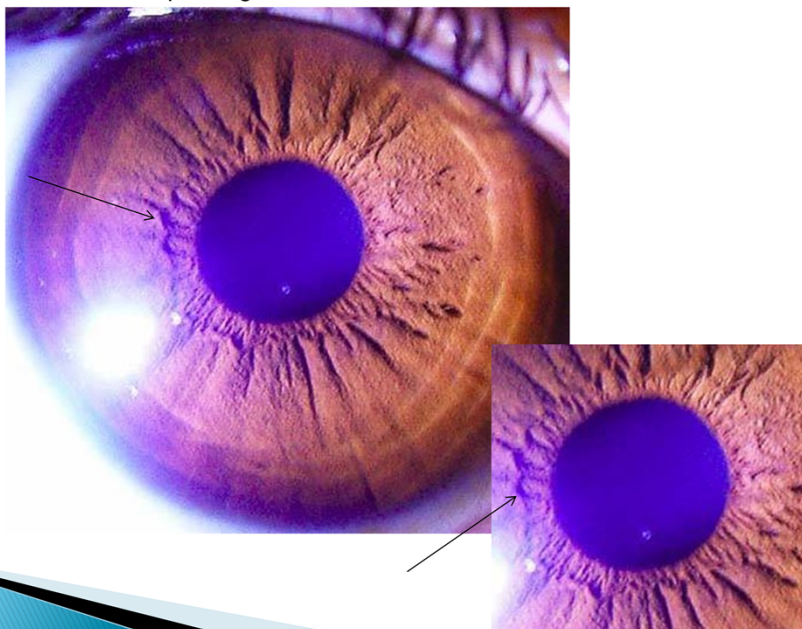
## Meerschaum Collarette

- It is extremely white
- May be jagged and indented
- Potential for acidity, irritation, and/or inflammation
- Abdominal spasms and intestinal cramping are common
- Weakened ability to absorb minerals
- Lacks proper Ph balance
- Nervous nature, intense, and hyperactive



## The Collarette and Nutritive Zone

Shape: Angle of Fuch's Collarette



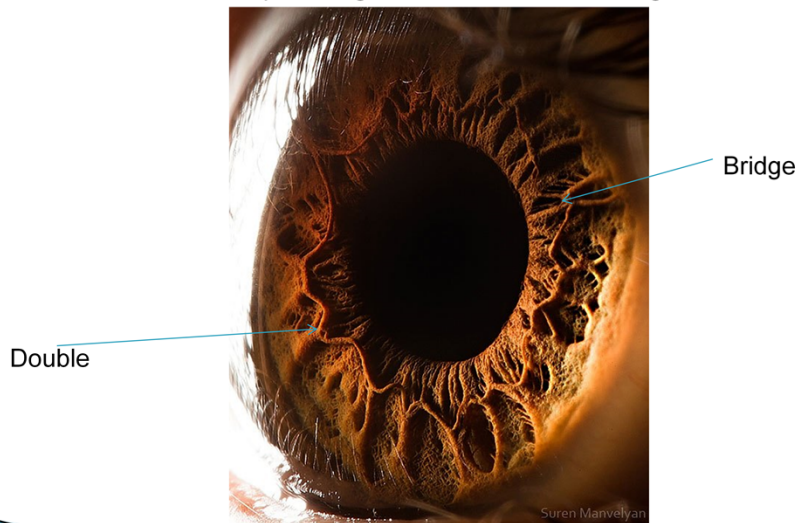
### Angle of Fuch's Collarette

- It appears thick and raised
- Under magnification looks like a mountain range sloping down towards the nutritive zone
- Often fermentation in the gut with overactive peristalsis
- Displays a strong conviction for life
- May tire easily



# The Collarette and Nutritive Zone

Shapes: Angle of Fuch's, Double, Bridge



## Angle of Fuch's, Double and Bridge Collarette

### **Angle of Fuch's**

- It appears thick and raised
- Under magnification looks like a mountain range sloping down towards the nutritive zone
- Often fermentation in the gut with overactive peristalsis
- Displays a strong conviction for life
- May tire easily

### **Double**

- Genetic sign
- Can appear at birth
- Collarette doubles in some areas
- Prone to abdominal spasms, hyper-motility and diarrhea
- Highly sensitive and usually very active

### **Bridge**

- Portion is raised up over the surface of the iris and often over a lacuna.
- Looks like an arch or bridge. It looks as if one could slip their finger or hand underneath the raised arch.
- Represents a potential genetic tendency for blood sugar imbalances including hypoglycemia or diabetes.





# The Collarette and Nutritive Zone

## 4 Types of Shapes of the Collarette

- ▶ Small Collarette, Small Pupil
- ▶ Small Collarette, Large Pupil
- ▶ Large Collarette, Small Pupil
- ▶ Large Collarette, Large Pupil

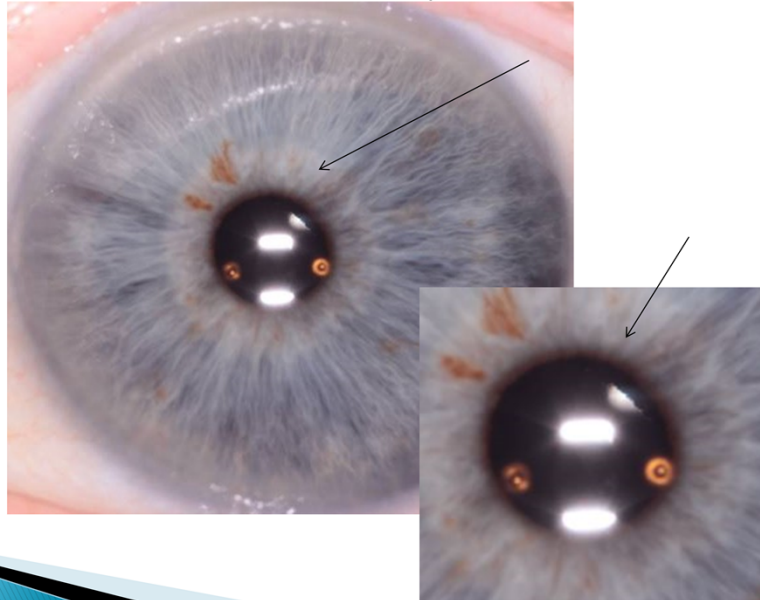
## 4 Types of Shapes of the Collarette

1. Small Collarette, Small Pupil
2. Small Collarette, Large Pupil
3. Large Collarette, Large Pupil
4. Large Collarette, Large Pupil



# The Collarette and Nutritive Zone

Small Collarette, Small Pupil



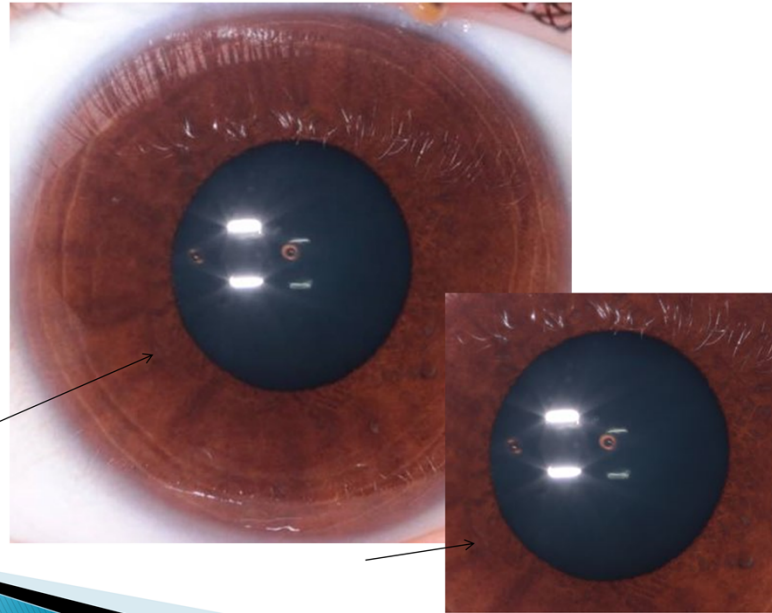
## Small Collarette, Small Pupil

- Seen in all iris colors
- Good metabolism
- Good energy levels
- Naturally High Achievers
- High expectation of others
- Small frequent meals suits this type



## The Collarette and Nutritive Zone

Small Collarette, Large Pupil



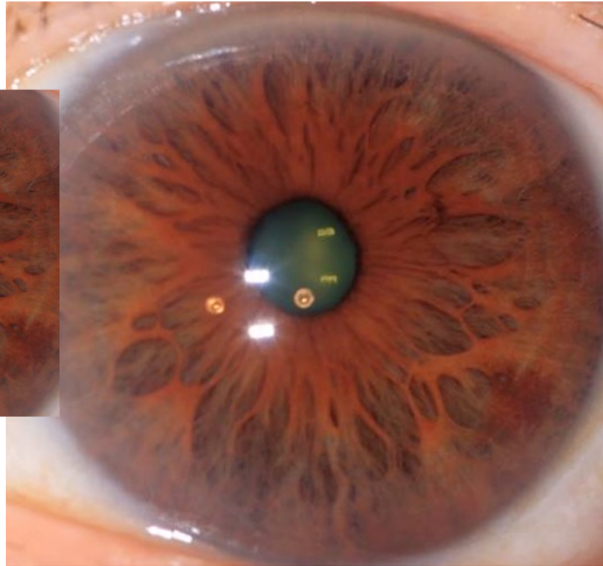
### Small Collarette, Large Pupil

- Seen in all iris colors
- Slow metabolism
- Lacks energy/needs protein
- Difficulty with absorption of nutrients
- Produces large amount of waste
- Need for small meals



# The Collarette and Nutritive Zone

Large Collarette, Small Pupil



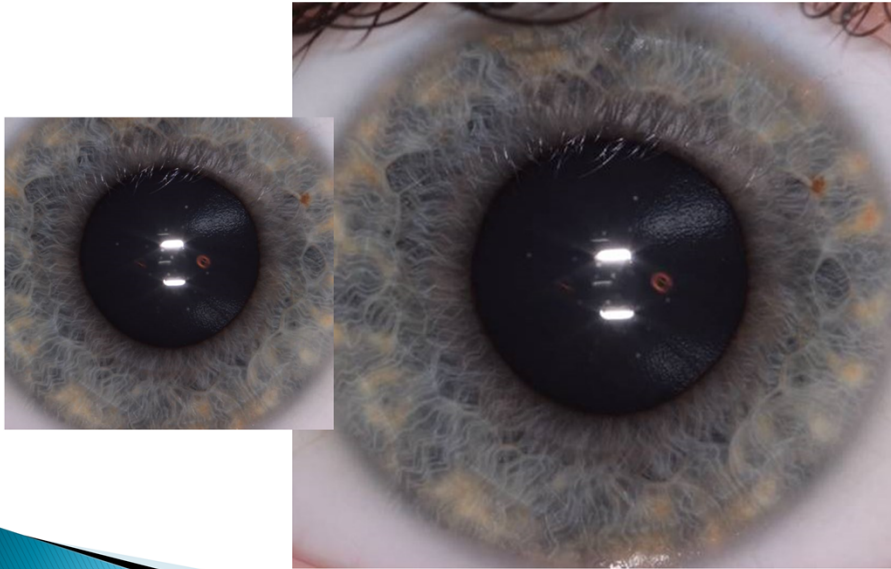
## Large Collarette, Small Pupil

- Seen in all iris colors
- Poor peristaltic action
- Outgoing in nature
- Exhibit a marked changeability
- Desire for much food
- As they age may have a “pot belly”
- Hard time eliminating wastes
- Great drive or intentions w/very little follow through



## The Collarette and Nutritive Zone

Large Collarette, Large Pupil



### Large Collarette, Large Pupil

- Seen in all iris colors
- Consume small meals
- Digestive enzymes needed for assimilation of nutrients
- Always hungry
- Gassy or flatulent
- Slow metabolism
- Manufactures waste in excess
- Minimal energy