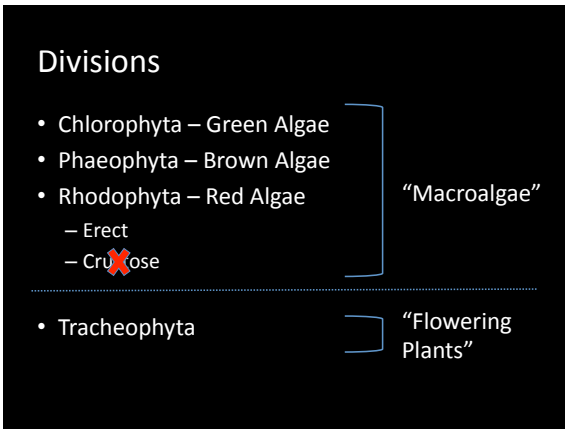
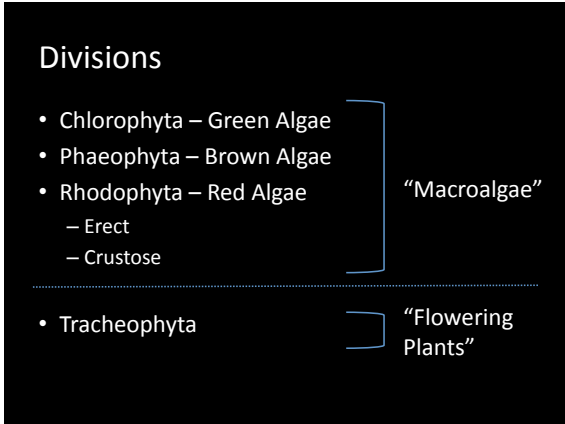


Kingdom Plantae

Macroalgae and Marine Flowering Plants



Chlorophyta: Green Algae

Chlorophyta: Green Algae

CODIUM FRAGILE
Thallus is spongy, highly branched



Chlorophyta: Green Algae

FILAMENTOUS GREEN
Fine hair-like, color varies from brown-ish to bright green depending on species



Chlorophyta: Green Algae

ULVOID

Sea lettuce –

Morphologies: Filaments, Tubes, or Blades



Phaeophyta: Brown Algae

Phaeophyta: Brown Algae

AGARUM CLATHRATUM

Mid-rib, with many regularly shaped holes

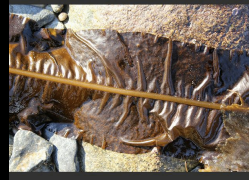


Phaeophyta: Brown Algae

ALARIA ESCULENTA

Long and narrow

Mid-rib present, but lacking holes



Phaeophyta: Brown Algae

ARTHROCLADIA VILLOSA

Irregular branching, with whorled tufts of hair



Phaeophyta: Brown Algae

Ascophyllum nodosum

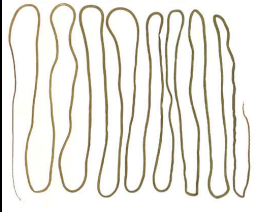

Thin, but long blades

Air bladders located throughout



Phaeophyta: Brown Algae

Chorda filum
Long brown rope

Phaeophyta: Brown Algae

Halosiphon tomentosus
Long, fuzzy rope – hairs more distinct than *Chorda*





Phaeophyta: Brown Algae

Colpomenia peregrina
Sea potatoes






Phaeophyta: Brown Algae

Leathesia marina
Stiffer, brain-like sea potato

Phaeophyta: Brown Algae

<i>Desmarestia aculeata</i> Alternate branching Thicker branches	<i>Desmarestia viridis</i> Opposite branching Fine, hair-like branches
--	--

Phaeophyta: Brown Algae

Laminaria digitata
"Branching" kelp



Phaeophyta: Brown Algae

Saccorhiza dermatodea – Similar to *Laminaria*, but with small tufts of hair



Phaeophyta: Brown Algae

Saccharina latissima – lasagna-like blade



Saccharina longicuris – long, hollow stipe



Phaeophyta: Brown Algae

Saccharina spp. – lasagna-like blade, long hollow stipe



Rhodophyta: Red Algae

Rhodophyta: Red Algae

Bonnemaisonia hamifera
"Fluffy", but with small hooks, often bright red




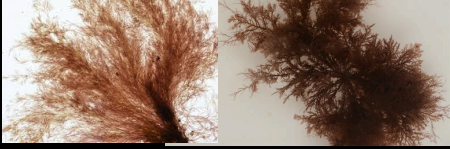
Rhodophyta: Red Algae

Heterosiphonia japonica
"Fluffy", thin branches, often bright red, with bushy ends



Rhodophyta: Red Algae

Polysiphonia sp.
 "Fluffy", most red fluff falls into this genus, although morphologies and colors can vary greatly – Color not a good identifier

Rhodophyta: Red Algae


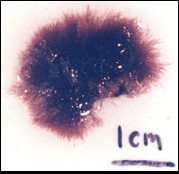
Ceramium spp.
 Pincers – usually rounded, but can be v-shaped

**Propose to add to species list!




Rhodophyta: Red Algae

Spermothamnion repens
 Fluffy red balls, no higher than 10 cm high

Rhodophyta: Red Algae

Cystoclonium purpureum
 Slightly thicker branches than the "fluffies"
 Often, but not always with very curly ends (tendrils)






Rhodophyta: Red Algae

Dumontia contorta
 Flat cylinders




Rhodophyta: Red Algae

Polyides rotundus
 Thicker branches than most "fluffies", but with distinct v-shaped branching – Pointed apices – Usually deep red

Rhodophyta: Red Algae

Ptilota serrata

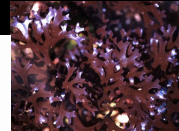
Bilateral branching in one plane only



Rhodophyta: Red Algae

Chondrus crispus

Flat fan like, but with many different morphologies



Rhodophyta: Red Algae

Mastocarpus stellatus

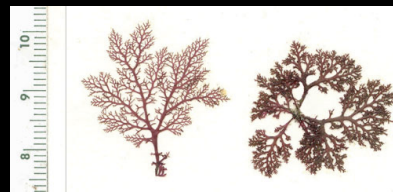
Channeled fronds, similar to *Chondrus*,



Rhodophyta: Red Algae

Euthora cristata

Flat and branching like *Chondrus*, but lacy



Rhodophyta: Red Algae

Porphyra spp.

Red *Ulva* – slightly thinner than *Palmaria*



Rhodophyta: Red Algae

Palmaria palmata

Flat, finger-like blades



Rhodophyta: Red Algae

Phycodrys rubens
Oak-leaf, with a mid-rib



Tracheophyta: Marine Flowering Plants

Zostera spp.
Seagrass

