



Recreational fishing in Western Australia

Fish identification guide



Contents

About this guide.....	1
Offshore demersal	3
Inshore demersal	4
Nearshore	12
Estuarine.....	19
Pelagic	20
Sharks	23
Crustaceans	25
Molluscs.....	26
Freshwater.....	27

Cover: Rowley Shoals. Photo: Shannon Conway

Published by Department of Fisheries, Perth, Western Australia.

Fisheries Occasional Publication No. 103, second edition, February 2014.

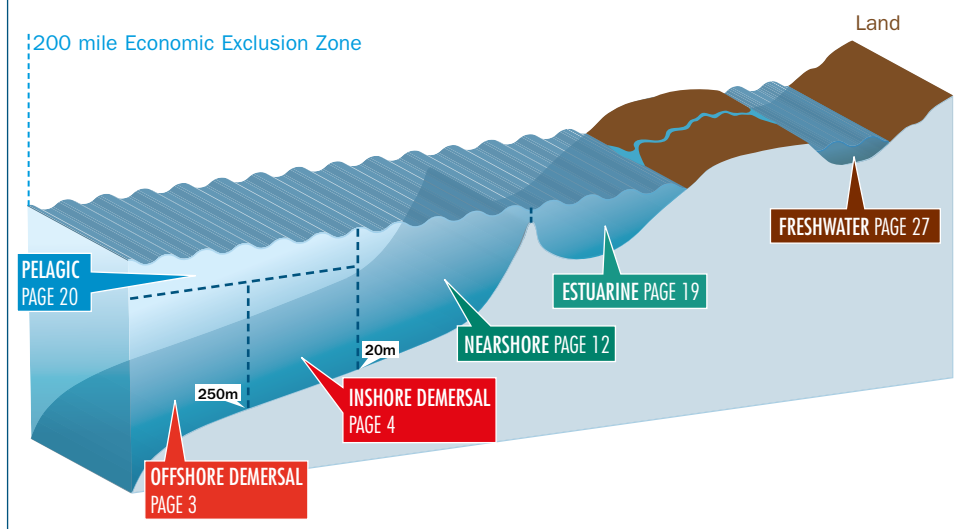
ISSN: 1447 - 2058 ISBN: 978-1-921845-31-4

About this guide

This guide has been developed to help you identify the more common species in Western Australia that you may encounter. The purpose of this recreational fishing guide is to greatly enhance consistent and accurate species identification.

If you are unsure about a particular species (or if it is not in this guide), please discuss it with a representative of the Department of Fisheries, Western Australia. You can access additional information on the website www.fish.wa.gov.au

Six broad ecological depth-based habitats are recognised within each bioregion. Finfish species are listed in the habitat where they most commonly occur. Sharks and crustaceans are presented separately as they may occupy many habitats.



About this guide (continued)

Throughout this guide you will see all or some of the following coastal bioregion symbols with each fish illustration, indicating where the species is most likely to occur.

NC North Coast

GC Gascoyne Coast

WC West Coast

SC South Coast

Freshwater species inhabit the inland bioregions, which are shown on the map on page 27.



Offshore demersal



NC GC WC SC

Eightbar grouper
(Grey banded rockcod, eightbar cod)
Hyporthodus octofasciatus



GC WC SC

Blue-eye trevalla
Hyperoglyphe antarctica



WC SC

Hapuku
Polyprion oxygeneios



NC GC WC

Ruby snapper
Etelis carbunculus



GC WC SC

Bass groper
Polyprion americanus



NC GC WC

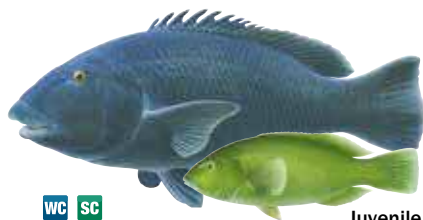
Flame snapper
Etelis coruscans

Inshore demersal



GC WC SC

West Australian dhufish
(Dhuie)
Glaucosoma hebraicum



WC SC

Juvenile

Western blue groper
Achoerodus gouldii



NC GC

Northern pearl perch
Glaucosoma buergeri



WC SC

Blue morwong
(Queen snapper)
Nemadactylus valenciennesi



GC WC SC

Juvenile

Snapper
(Pink snapper, pinkie)
Pagrus auratus



WC SC

Harlequin fish
Othos dentex



NC GC WC

Painted sweetlips
(Slatey bream, sweetlip)
Diagramma labiosum



GC WC SC

Sea sweep
Scorpis aequipinnis



WC SC

Yelloweye redfish
Centroberyx australis



NC GC WC

Common coral trout
(Leopard coral trout)
Plectropomus leopardus



WC SC

Bight redfish
(Red snapper, nannygai)
Centroberyx gerrardi



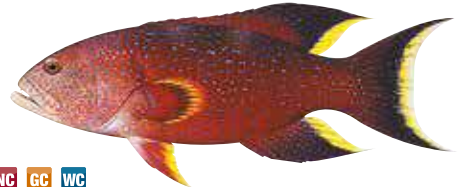
NC GC

Barcheek coral trout
(Inshore coral trout)
Plectropomus maculatus



WC SC

Swallowtail
Centroberyx lineatus



NC GC WC

Yellowedge coronation trout
(Coronation trout, lunartail trout)
Variola louti



GC WC SC

Sergeant baker
Aulopus purpurissatus



NC GC

Chinamanfish
(Chinaman)
Symphorus nematophorus

Juvenile

Inshore demersal (continued)



NC GC WC

Spangled emperor
Lethrinus nebulosus



NC GC

Longnose emperor
(Long-nosed emperor)
Lethrinus olivaceus



NC GC

Grass emperor
(Black snapper, blue-lined emperor,
grass snapper, tricky snapper)
Lethrinus laticaudis



NC GC

Redspot emperor
(Pink-eared emperor)
Lethrinus lentjan



NC GC

Bluespotted emperor
(Lesser spangled emperor)
Lethrinus punctulatus



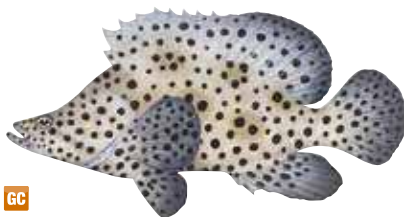
NC GC WC

Redthroat emperor
(Sweetlip emperor)
Lethrinus miniatus



NC GC WC

Yellowtail emperor
Lethrinus atkinsoni



NC GC

Barramundi cod
Chromileptes altivelis



NC GC WC

Blackspotted rockcod
(Malabar cod, estuary cod, slimy cod)
Epinephelus malabaricus



NC GC

Yellowspotted rockcod
(Spotted cod, honeycomb cod)
Epinephelus areolatus



NC GC WC

Goldspotted rockcod
(Estuary cod, slimy cod, greasy grouper)
Epinephelus coioides



NC GC

Frostback rockcod
(Spotted cod, honeycomb cod, frostback cod)
Epinephelus bilobatus



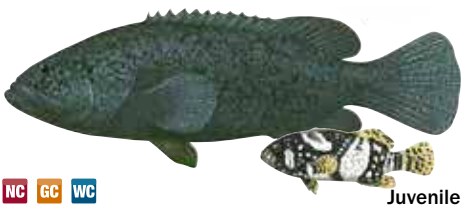
NC GC

Potato rockcod **PROTECTED SPECIES**
(Potato cod)
Epinephelus tukula



NC GC

Duskytail grouper
(Spotted trout, trout cod)
Epinephelus bleekeri



NC GC WC

Queensland grouper **PROTECTED SPECIES**
(Giant grouper, Queensland grouper)
Epinephelus lanceolatus



NC GC WC

Rankin cod
(Whitespotted rockcod)
Epinephelus multinotatus

Inshore demersal (continued)



GC WC SC

Breaksea cod
(Black arse snapper)
Epinephelides armatus



NC GC WC

Mangrove Jack
(Jacks)
Lutjanus argentimaculatus



NC GC

Rosy threadfin bream
Nemipterus furcosus



NC GC WC

Darktail snapper Juvenile
(Maroon seaperch, dark tailed seaperch)
Lutjanus lemniscatus



NC GC WC

Robinson's seabream
(Robinson's bream, Robinson's perch)
Gymnocranius grandoculis



NC GC WC

Brownstripe snapper
(Flagfish)
Lutjanus vitta



NC GC WC

Moses' snapper
(Moses' perch, fingermark bream)
Lutjanus russellii



NC GC WC

Stripey snapper
(Spanish flag, stripey seaperch)
Lutjanus carponotatus



NC GC

Crimson snapper
(Crimson seaperch, red snapper)
Lutjanus erythropterus



NC

Golden snapper
(Fingermark seaperch, fingermark bream)
Lutjanus johnii



NC GC

Saddletail snapper
(Scarlet seaperch)
Lutjanus malabaricus



NC GC

Goldband snapper
Pristipomoides multidens



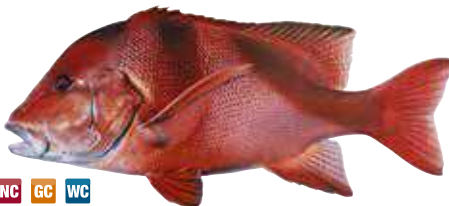
NC GC

Maori snapper
(Maori seaperch)
Lutjanus rivulatus



NC GC WC

Rosy snapper
(Rosy jobfish, crimson jobfish)
Pristipomoides filamentosus



NC GC WC

Red emperor
(Reds)
Lutjanus sebae



NC GC WC

Sharptooth snapper
(Sharptooth jobfish)
Pristipomoides typus

Inshore demersal (continued)



NC

Humphead Maori wrasse *PROTECTED SPECIES*
Cheilinus undulatus



NC GC

Bluespotted tuskfish
Choerodon cauteroma



NC GC

Goldspot pigfish
(Goldspot foxfish)
Bodianus perditio



NC GC

Blue tuskfish
(Bluebone)
Choerodon cyanodus



WC SC

Foxfish
(Western foxfish)
Bodianus frenchii



NC GC

Blackspot tuskfish
(Bluebone)
Choerodon schoenleinii



GC WC

Baldchin groper
(Baldie)
Choerodon rubescens



NC GC

Purple tuskfish
(Grass tuskfish, bluebone)
Choerodon cephalotes



NC GC WC

Bluebarred parrotfish
Scarus ghobban



NC GC

Frypan bream
Argyrops spinifer



WC SC

Bighead gurnard perch
(Gurnard perch)
Neosebastes pandus

Nearshore



WC SC

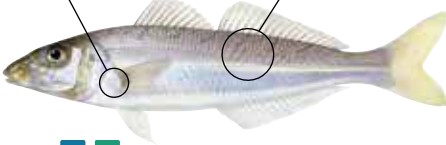
King George whiting
(KG)
Sillaginodes punctata



NC GC WC

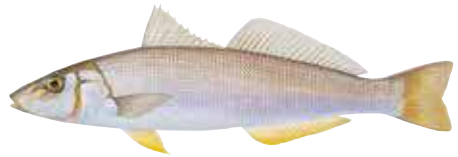
Western trumpeter whiting
Sillago burrus

no dot markings on base of pectoral fin faint or no bars



WC SC

Southern school whiting
(Sand whiting, school whiting)
Sillago bassensis

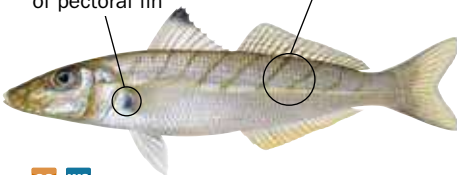


GC WC SC

Yellowfin whiting
(Sand whiting, silver whiting)
Sillago schomburgkii



dot markings on base of pectoral fin well defined bars



GC WC

Western school whiting
(Sand whiting, school whiting)
Sillago vittata



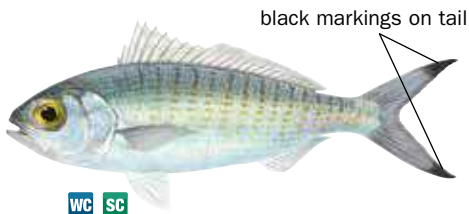
NC GC

Goldenline whiting
(Golden-lined whiting)
Sillago analis



GC WC SC

Yellowtail scad
(Yellowtail, yellowtail horse mackerel)
Trachurus novaezelandiae



WC SC

Australian herring
(Herring, tommy ruff)
Arripis georgianus



GC WC SC

Mulloway
(River kingfish)
Argyrosomus japonicus – also known as
Argyrosomus hololepidotus



WC SC

Western Australian salmon (Salmon)
Arripis truttaceus

Juvenile, often called salmon trout, looks like adult Australian herring but has smaller eye and pointy head



NC

Black jewfish
(Northern mulloway)
Protonibea diacanthus



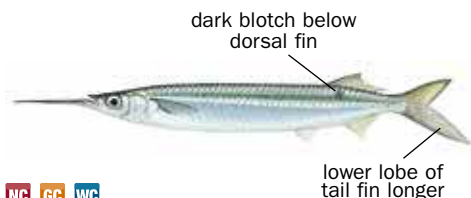
WC SC

Southern garfish
(Gardie, southern sea garfish)
Hyporhamphus melanochir



GC WC

Western butterfish
(Butterfish, buttery)
Pentapodus vitta



NC GC WC

Three-by-two garfish
(Robust garfish, storm garfish)
Hemiramphus robustus



WC SC

Bluespotted goatfish
(Red mullet)
Upeneichthys vlamingii

Juvenile

Nearshore (continued)



GC WC SC

Silver trevally
(Skipjack, skippy)

Pseudocaranx georgianus

This includes the smaller sand trevally (*P. wrightii*)



WC SC

Horseshoe leatherjacket

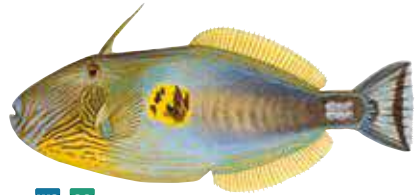
Meuschenia hippocrepis



NC GC WC

Longtom

Family *Belonidae*



WC SC

Sixspine leatherjacket

(Reef leatherjacket)

Meuschenia freycineti



WC SC

Snook

Sphyraena novaehollandiae



GC WC SC

Tailor

(Chopper - small tailor)

Pomatomus saltatrix



NC GC WC SC

Striped seapike

(Pike, striped barracuda)

Sphyraena obtusata



WC SC

Banded sweep

Scorpius georgiana



GC WC SC

Blue mackerel
(Slimey mackerel, common mackerel)
Scomber australasicus



NC GC

Greenback mullet
Liza subviridis



GC WC SC

Oriental bonito
Sarda orientalis



NC GC

Bluetail mullet
Valamugil buchanani



NC GC

Barramundi
Lates calcarifer



NC GC WC SC

Sea mullet
(Mullet)
Mugil cephalus



NC GC

Diamondscale mullet
Liza vaigiensis



WC SC

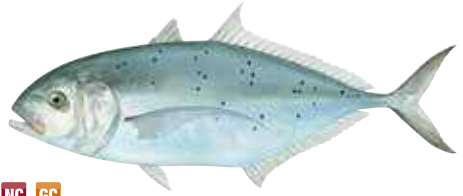
Yelloweye mullet
(Pilch, yellow-eyed mullet)
Aldrichetta forsteri

Nearshore (continued)



NC GC WC

Chinaman rockcod
(Charlie court)
Epinephelus rivulatus



NC GC

Bludger trevally
Carangoides gymnostethus



NC GC

Queenfish
(Queenie)
Scomberoides spp.



NC GC WC

Turrum
(Goldspotted trevally)
Carangoides fulvoguttatus



NC GC

Western yellowfin bream
(Yellowfin bream)
Acanthopagrus latus



NC GC WC

Golden trevally
(Banded trevally)
Gnathanodon speciosus



NC

Northwest black bream
(Pikey bream)
Acanthopagrus palmaris



NC GC WC

Giant trevally
(GT)
Caranx ignobilis



NC GC

Blotched javelin
(Blotched javelinfish)
Pomadasys maculatus



NC

Blue threadfin
(Bluenose threadfin salmon, blue salmon)
Eleutheronema tetradactylum



NC GC

Barred javelin
(Spotted javelinfish)
Pomadasys kaakan



NC

King threadfin
(Giant threadfin salmon, giant threadfin)
Polydactylus macrochir



NC GC WC SC

Silver toadfish **POISONOUS**
(North-West blowfish)
Lagocephalus sceleratus



NC GC WC

Giant sea catfish
(Giant salmon catfish)
Arius thalassinus



GC WC SC

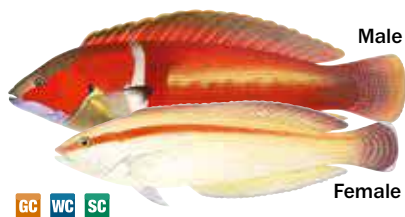
Weeping toadfish **POISONOUS**
(Blowie, pufferfish, common blowfish)
Torquigener pleurogramma



NC GC WC

Tripletail
Labotes surinamensis

Nearshore (continued)



GC WC SC

Western King wrasse
Coris auricularis



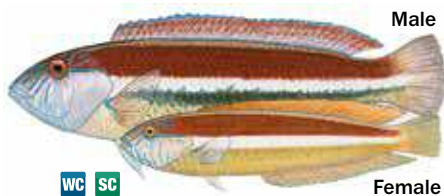
GC WC

Common dart
Trachinotus botla



GC WC SC

Brownspeckled wrasse
Notolabrus parilus



WC SC

Southern maori wrasse
Ophthalmolepis lineolatus



WC SC

Western striped grunter
(Trumpeter, striped trumpeter)
Pelates octolineatus

Estuarine



NC GC WC

Yellowtail flathead
(Bartailed flathead)
Platycephalus westraliae



NC GC WC SC

Smalltooth flounder
Pseudorhombus jenynsii



NC GC

Northern sand flathead
(Sand flathead, flag tailed flathead)
Platycephalus endrachtensis



NC GC

Largetooth flounder
Pseudorhombus arsius



WC SC

Southern bluespotted flathead
(Bluespotted flathead, southern flathead)
Platycephalus speculator



WC SC

Black bream
Acanthopagrus butcheri



WC SC

Estuary cobbler
(Cobbler)
Cnidoglanis macrocephalus



GC WC SC

Tarwhine
(Silver bream)
Rhabdosargus sarba



GC WC SC

Juvenile

Samsonfish
Seriola hippos



NC GC WC SC

Southern bluefin tuna
Thunnus maccoyii



NC GC WC

Amberjack
Seriola dumerili



NC GC WC

Northern bluefin tuna
Thunnus orientalis



GC WC SC

Yellowtail kingfish
(Kingfish, kingie)
Seriola lalandi



NC GC WC

Mackerel tuna
(Jack mackerel, kawakawa)
Euthynnus affinis



NC GC WC

Yellowfin tuna
Thunnus albacares



NC

Dogtooth tuna
(Doggie)
Gymnosarda unicolor



NC GC WC

Spanish mackerel
(Narrow-barred Spanish mackerel)
Scomberomorus commerson



NC GC WC

Shark mackerel
(Scaly mackerel, salmon mackerel)
Grammatorcynus bicarinatus



NC GC WC

Grey mackerel
(Broad-barred Spanish mackerel,
broad-banded mackerel)
Scomberomorus semifasciatus



NC GC WC

Blue marlin
Makaira nigricans



NC GC WC

Spotted mackerel
(Australian spotted mackerel)
Scomberomorus munroi



NC GC WC

Black marlin
Makaira indica



NC GC WC

School mackerel
(Queensland school mackerel, doggie)
Scomberomorus queenslandicus



NC GC WC

Striped marlin
Tetrapterus audax

Pelagic (continued)



NC GC WC

Sailfish
Istiophorus platypterus



NC GC WC

Mahi mahi
(Dolphinfish)
Coryphaena spp.



NC GC WC

Cobia
(Black kingfish)
Rachycentron canadum



NC GC WC


Wahoo
Acanthocybium solandri



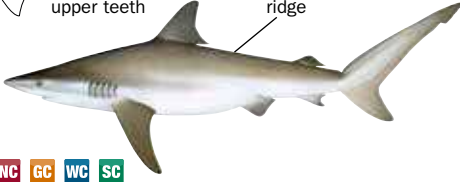
NC GC WC

Great barracuda
Sphyræna barracuda

Sharks

 broad, angular upper teeth

interdorsal ridge




NC GC WC SC

Dusky whaler
Carcharhinus obscurus

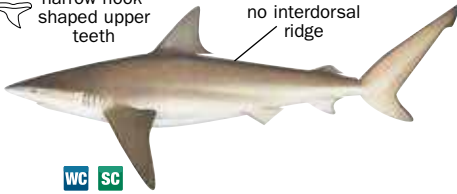


NC GC

Whitetip reef shark
Triaenodon obesus

 narrow hook-shaped upper teeth

no interdorsal ridge



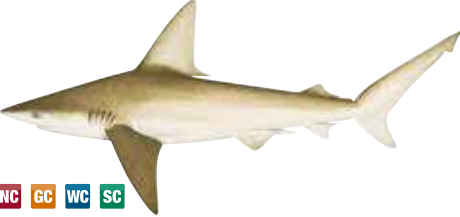
WC SC

Bronze whaler
Carcharhinus brachyurus



WC SC

Whiskery shark
Furgaleus macki



NC GC WC SC

Sandbar shark
(Thickskin shark, northern whaler, sand shark)
Carcharhinus plumbeus



WC SC

Gummy shark
(Southern gummy shark)
Mustelus antarcticus



NC GC WC SC

Tiger shark
Galeocerdo cuvier



NC GC WC

Western spotted gummy shark
Mustelus stevensi

Sharks (continued)



NC GC WC SC

Hammerhead sharks
Family Sphyrnidae



NC GC WC SC

White shark *PROTECTED SPECIES*
Carcharodon carcharias



NC GC WC SC

Wobbegongs
Family Orectolobidae



WC SC

Sawsharks
Family Pristiophoridae



GC WC SC

Grey nurse shark
Carcharias taurus



NC GC WC SC

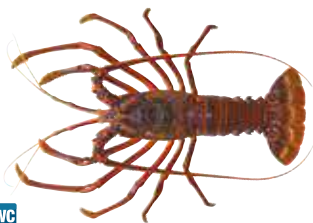
Sawfishes *PROTECTED SPECIES*
Family Pristidae



WC SC

Port Jackson shark
Heterodontus portusjackson

Crustaceans



GC WC

Western rock lobster
Panulirus cygnus



NC GC

Brown mud crab
(Orange mud crab)
Scylla olivacea



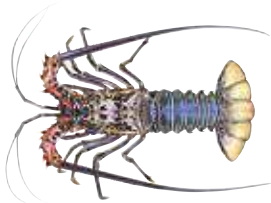
WC SC

Southern rock lobster
Jasus edwardsii



NC GC WC

Green mud crab
(Giant mud crab)
Scylla serrata



NC GC

Painted rock lobster
(Tropical rock lobster, green rock lobster)
Panulirus versicolor



NC GC WC SC

Blue swimmer crab
(Blue manna, blue crab)
Portunus armatus (formerly *P. pelagicus*)



NC GC

Ornate rock lobster
(Tropical rock lobster)
Panulirus ornatus



NC WC SC

Prawns
Family Penaeidae

Molluscs



WC SC

Roe's abalone
Haliotis roei



NC GC WC SC

Squid
Order Teuthoidea



WC SC

Greenlip abalone
Haliotis laevigata



NC GC WC SC

Octopus
Octopus spp.



WC SC

Brownlip abalone
Haliotis conicopora



NC GC WC SC

Cuttlefish
Family Sepiidae

Freshwater

Two different bioregions apply for freshwater species – the Northern Inland Bioregion and the Southern Inland Bioregion, shown on the map below.



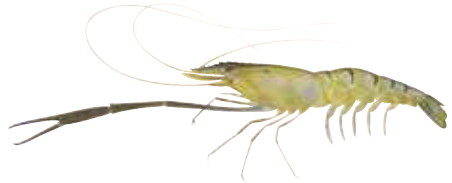
SI

Marron
Cherax cainii



NI

Redclaw
(Queensland red claw crayfish)
Cherax quadricarinatus



NI

Cherabin
(Freshwater prawns)
Macrobrachium spp.



NI

Silver cobbler
(Lake Argyle catfish, Ord River catfish)
Arius midgleyi



NI

Western sooty grunter
(Sooty grunter)
Hephaestus jenkinsi

Index of common names

- A**
 Amberjack 20
 Australian herring..... 13
- B**
 Baldchin groper..... 10
 Banded sweep 14
 Barcheek coral trout..... 5
 Barramundi 15
 Barramundi cod 6
 Barred javelin..... 17
 Bass groper..... 3
 Bighead gurnard perch .. 11
 Bight redfish 5
 Black bream 19
 Black jewfish 13
 Black marlin 21
 Blackspotted rockcod 7
 Blackspot tuskfish..... 10
 Blotched javelin..... 17
 Bluebarred parrotfish..... 11
 Blue-eye trevalla..... 3
 Blue mackerel..... 15
 Blue marlin 21
 Blue morwong..... 4
 Bluespotted emperor..... 6
 Bluespotted goatfish 13
 Bluespotted tuskfish 10
 Blue swimmer crab..... 25
 Bluetail mullet..... 15
 Blue threadfin 17
 Blue tuskfish 10
 Breaksea cod..... 8
 Bronze whaler 23
 Brownlip abalone..... 26
 Brown mud crab..... 25
- Brownspeckled wrasse 18
 Brownstripe snapper 8
- C**
 Cherabin..... 27
 Chinamanfish..... 5
 Chinaman rockcod..... 16
 Cobia 22
 Common coral trout..... 5
 Common dart..... 18
 Crimson snapper..... 9
 Cuttlefish..... 26
- D**
 Darktail snapper 8
 Diamondscale mullet..... 15
 Dogtooth tuna 20
 Duskytail grouper 7
 Dusky whaler 23
- E**
 Eightbar grouper..... 3
 Estuary cobbler..... 19
- F**
 Flame snapper 3
 Foxfish 10
 Frostback rockcod 7
 Frypan bream..... 11
- G**
 Giant sea catfish..... 17
 Giant trevally..... 16
 Goldband snapper..... 9
 Goldenline whiting..... 12
 Golden snapper 9
 Golden trevally 16
 Goldspot pigfish..... 10
- Goldspotted rockcod 7
 Grass emperor..... 6
 Great barracuda..... 22
 Greenback mullet..... 15
 Greenlip abalone..... 26
 Green mud crab 25
 Grey mackerel..... 21
 Greynurse shark..... 24
 Gummy shark..... 23
- H**
 Hammerhead sharks 24
 Hapuku 3
 Harlequin fish 4
 Horseshoe leatherjacket 14
 Humphead Maori wrasse 10
- K**
 King George whiting..... 12
 King threadfin 17
- L**
 Largemouth flounder 19
 Longnose emperor 6
 Longtom 14
- M**
 Mackerel tuna..... 20
 Mahi mahi 22
 Mangrove Jack 8
 Maori snapper 9
 Marron 27
 Moses' snapper..... 8
 Mulloway 13
- N**
 Northern bluefin tuna 20
 Northern pearl perch 4

Northern sand flathead.. 19	Sawfishes 24	Tripletail 17
Northwest black bream.. 16	Sawsharks..... 24	Turrum..... 16
O	School mackerel 21	W
Octopus..... 26	Sea mullet..... 15	Wahoo 22
Oriental bonito 15	Sea sweep..... 4	Weeping toadfish 17
Ornate rock lobster 25	Sergeant baker 5	West Australian dhufish... 4
P	Shark mackerel..... 21	Western Australian
Painted rock lobster 25	Sharptooth snapper..... 9	salmon (Salmon)..... 13
Painted sweetlips..... 4	Silver cobbler..... 27	Western blue groper 4
Platycephalus speculator 19	Silver toadfish..... 17	Western butterfish..... 13
Port Jackson shark..... 24	Silver trevally 14	Western King wrasse.... 18
Potato rockcod..... 7	Sixspine leatherjacket ... 14	Western rock lobster 25
Prawns 25	Smalltooth flounder..... 19	Western school whiting.. 12
Purple tuskfish..... 10	Snapper 4	Western sooty grunter ... 27
Q	Snook 14	Western spotted gummy
Queenfish..... 16	Southern bluefin tuna.... 20	shark 23
Queensland groper 7	Southern bluespotted	Western striped grunter. 18
R	flathead..... 19	Western trumpeter
Rankin cod 7	Southern garfish 13	whiting 12
Redclaw..... 27	Southern maori wrasse.. 18	Western yellowfin bream 16
Red emperor..... 9	Southern rock lobster ... 25	Whiskery shark 23
Redspot emperor 6	Southern school whiting 12	White shark 24
Redthroat emperor 6	Spangled emperor..... 6	Whitetip reef shark..... 23
Robinson's seabream 8	Spanish mackerel 21	Wobbegongs 24
Roe's abalone..... 26	Spotted mackerel..... 21	Y
Rosy snapper..... 9	Squid 26	Yellowedge coronation trout.5
Rosy threadfin bream 8	Striped marlin 21	Yelloweye mullet..... 15
Ruby snapper..... 3	Striped seapike..... 14	Yelloweye redfish..... 5
S	Stripey snapper..... 8	Yellowfin tuna 20
Saddletail snapper 9	Swallowtail 5	Yellowfin whiting..... 12
Sailfish..... 22	T	Yellowspotted rockcod 7
Samsonfish 20	Tailor 14	Yellowtail emperor..... 6
Sandbar shark 23	Tarwhine 19	Yellowtail flathead 19
	Three-by-two garfish 13	Yellowtail kingfish..... 20
	Tiger shark 23	Yellowtail scad 12

Before you go fishing, let someone know where you are going and contact them if your plans change. Always let them know when you return.

The information in this guide is current at the date of printing, but may change. A separate guide on fishing rules is available.

For the most up-to-date information on fishing, visit the Department of Fisheries website or contact us.

www.fish.wa.gov.au

**Produced for the Survey of Recreational
Fishing in Western Australia.**



DEPARTMENT OF FISHERIES – HEAD OFFICE

3rd Floor, The Atrium,

168 St Georges Terrace, Perth 6000

T: (08) 9482 7333 **F:** (08) 9482 7389

www.fish.wa.gov.au

customerservice@fish.wa.gov.au

ABN: 55 689 794 771