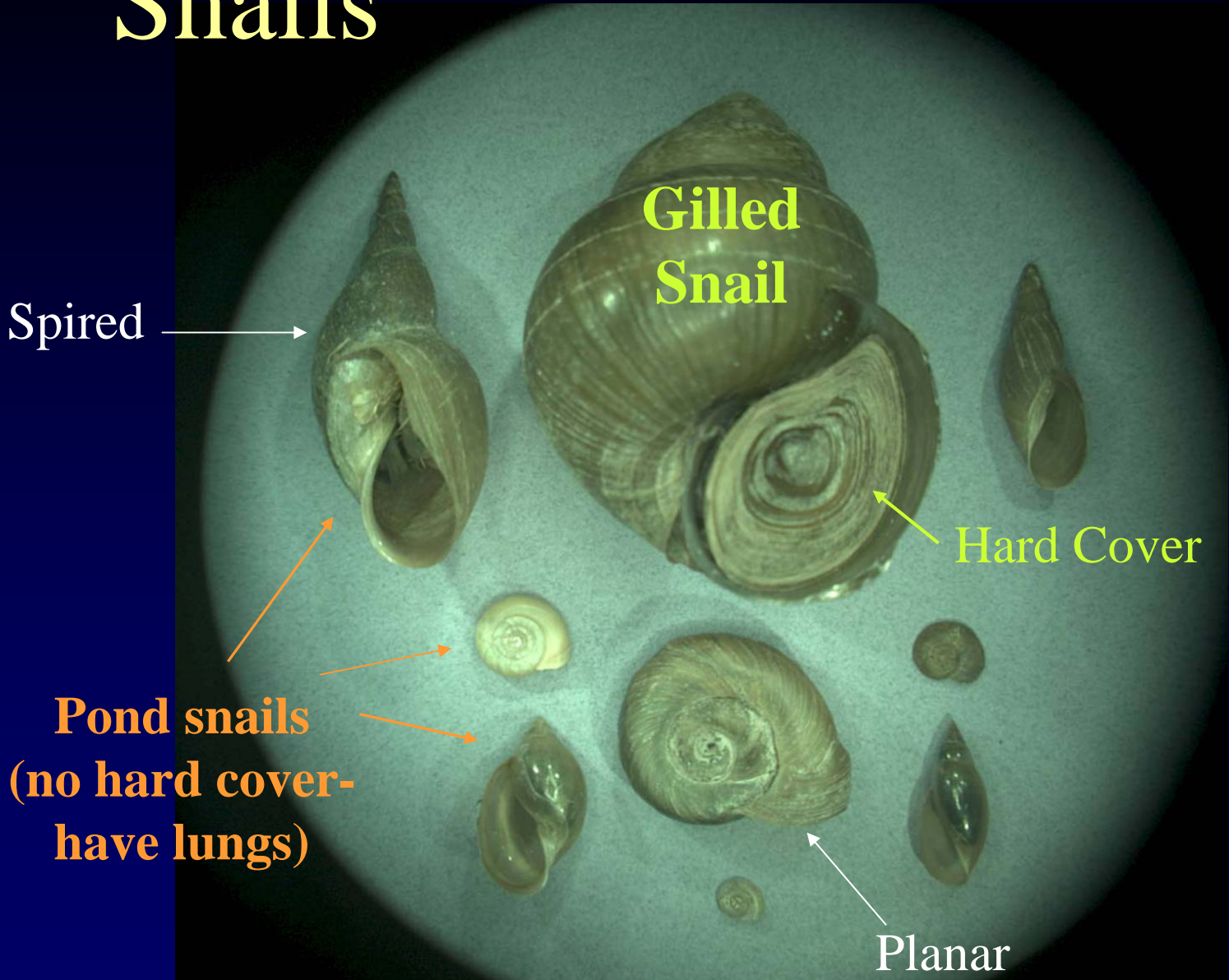


# Snails



Spired

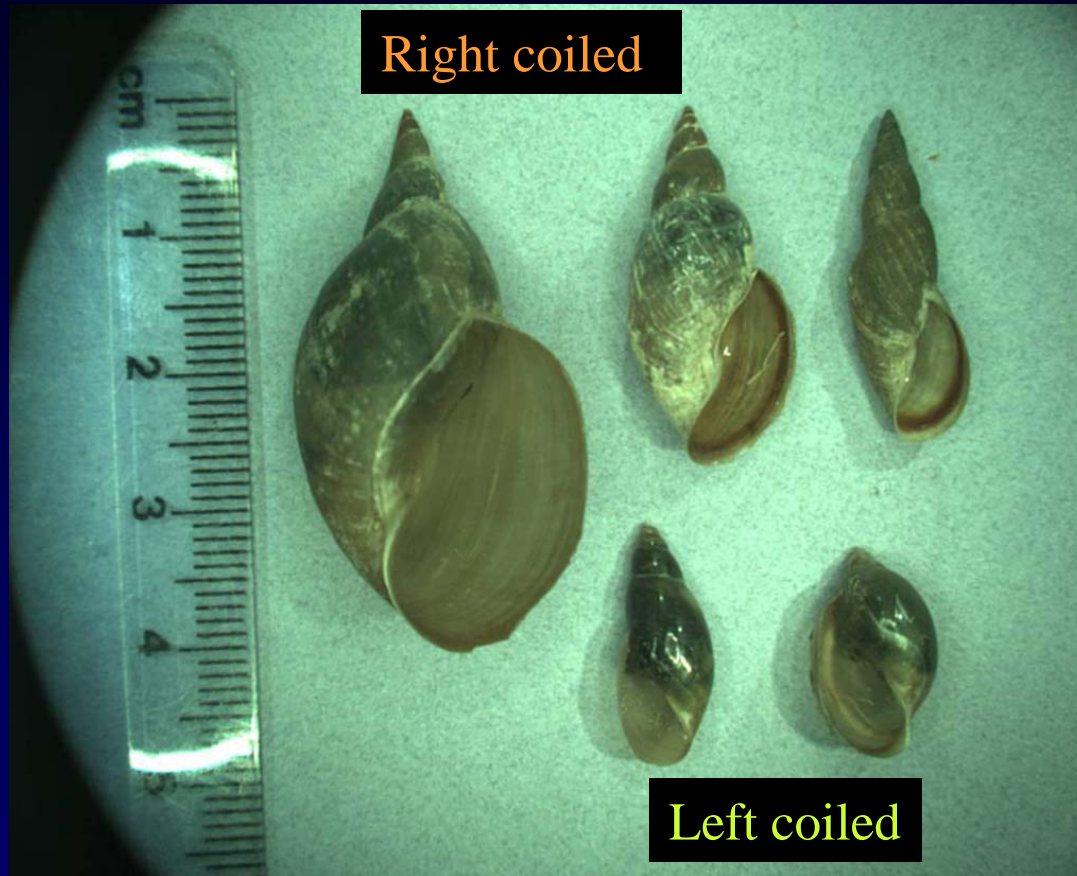
Gilled Snail

Hard Cover

Pond snails  
(no hard cover -  
have lungs)

Planar

# Spired Snails



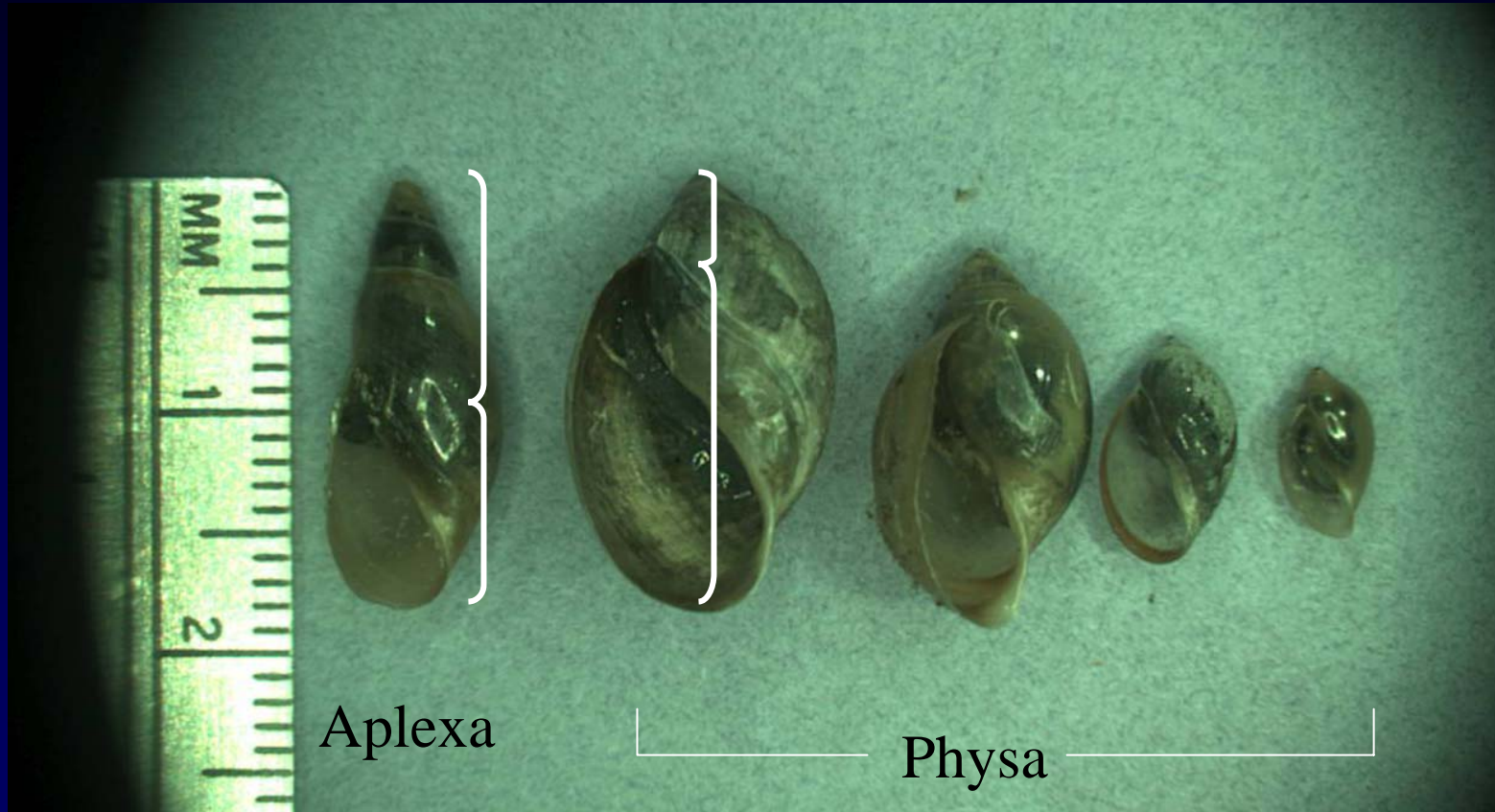
# Spired Snails



## Adult vs. Immature Snails

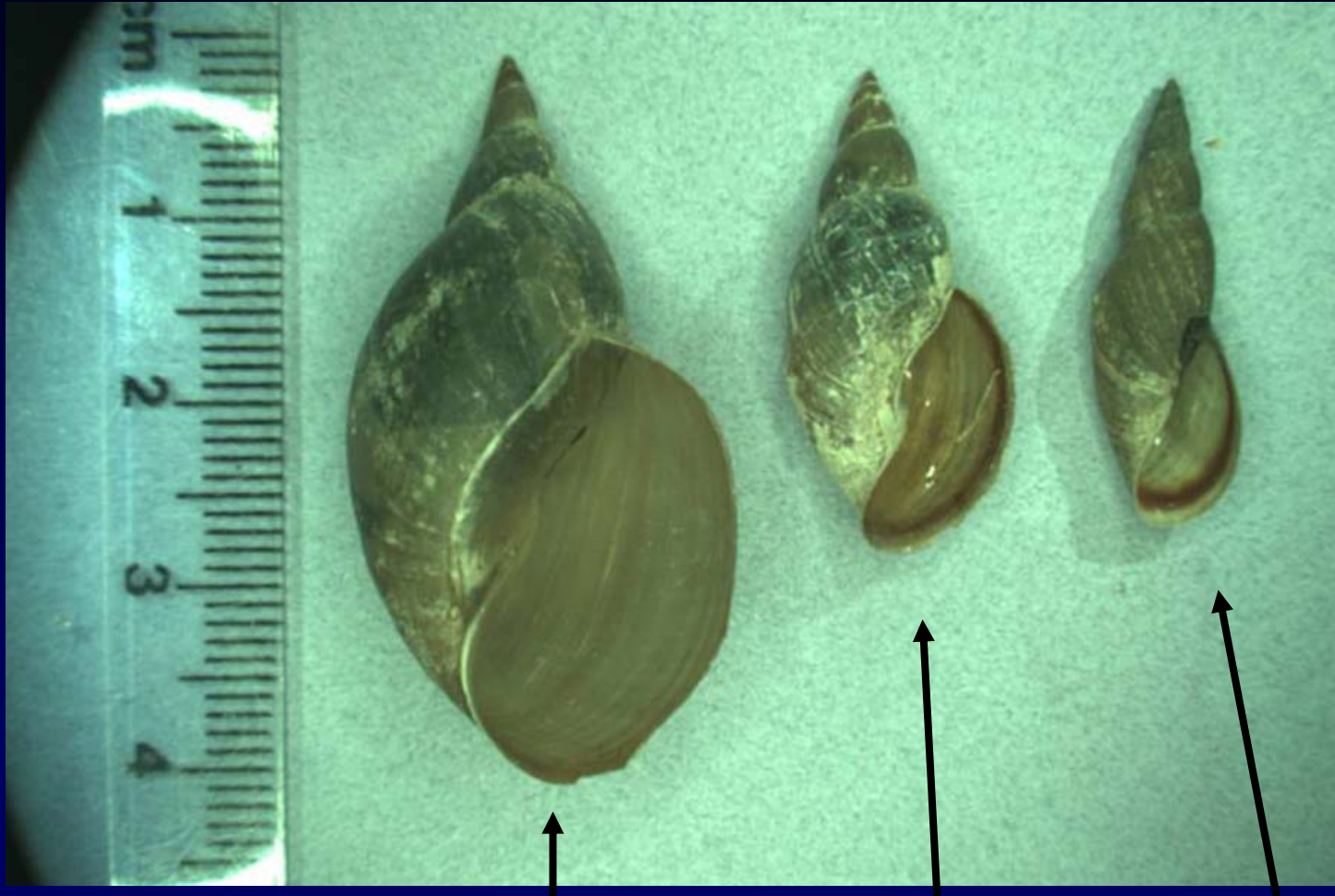
- Adults have a spire with  $\geq 3$  whorls
- Immature 1-2 whorls

# Spired Snails- Left Coiled



Physa is very common, sizes vary widely  
The opening of Physa is always more than half of it's  
verticle length, the opening of Aplexa is always less.

# Large Spired Snails- Right Coiled



Lymnaea  
Stagnalis

Stagnicola  
Elodes

Stagnicola  
Reflexa

# Large Spired Snails- Right Coiled



**Lymnaea Stagnalis**

Very narrow spire, gets large very abruptly in last whorl



**Stagnicola Elodes**

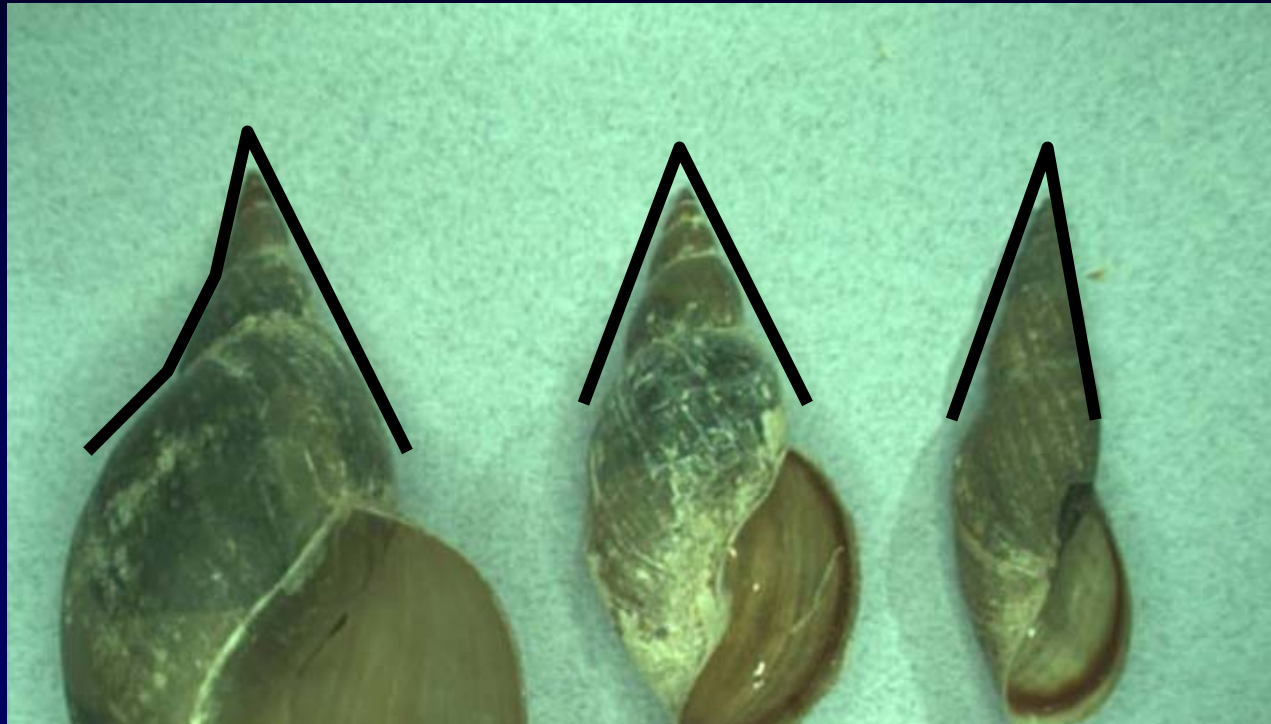
Whorls increase in size evenly, robust body



**Stagnicola Reflexa**

Whorls increase in size evenly, narrow body

# Large Spired Snails- Right Coiled



**Lymnaea Stagnalis**

Very narrow spire, gets large very abruptly in last whorl

**Stagnicola Elodes**

Whorls increase in size evenly, robust body

**Stagnicola Reflexa**

Whorls increase in size evenly, narrow body

# Spired Snails- Right Coiled

## *Lymnaea Stagnalis*

- Size can vary
- Up to 56 mm
- Thin, fragile shell
- Sharp point
- Wide whorl above the opening of the shell





# Spired Snails- Right Coiled



## Oriental Mystery Snail

- Note rounded shape
- Operculum (hard cover) may not be present on a preserved specimen

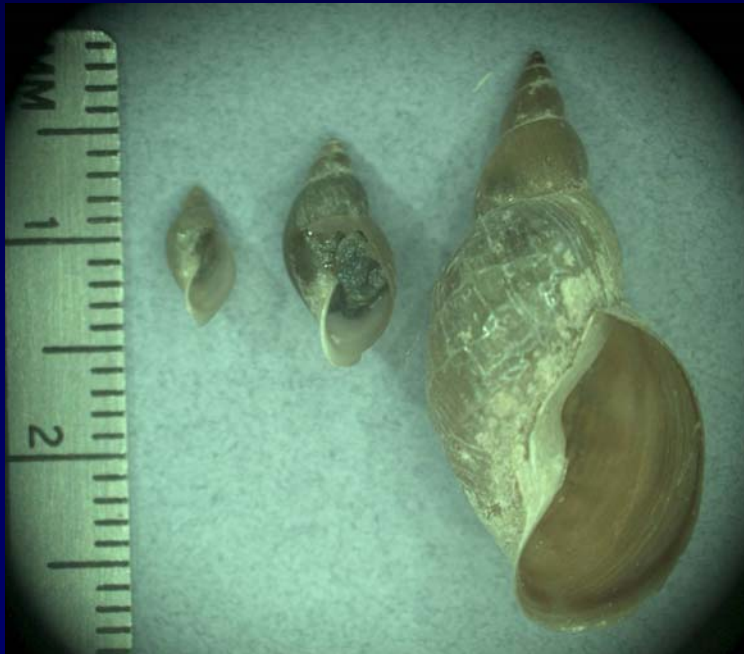
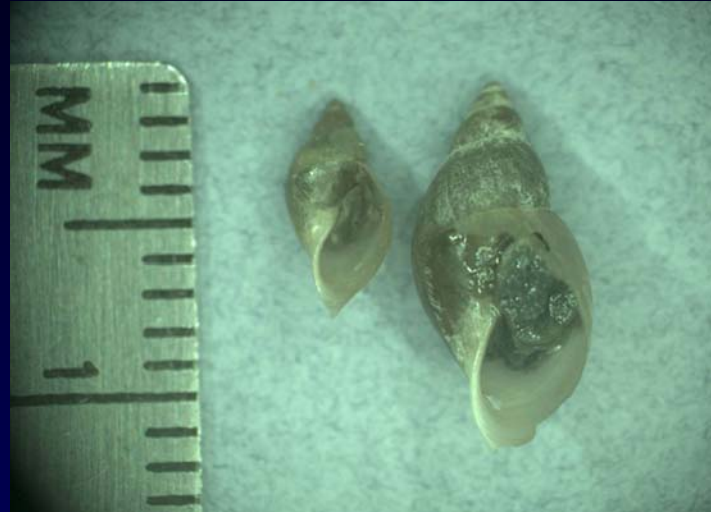


- *Bulinnaea* vs. gill snail

# Spired Snails- Right Coiled

## Fossaria

- Less than 13 mm
- Small with 4-5 turns in shell



## Stagnicola

- Some may have similar shape to Fossaria, but they are much larger
- Up to 32 or 35 mm

Fossaria vs. stagnicola

# Planar Snails

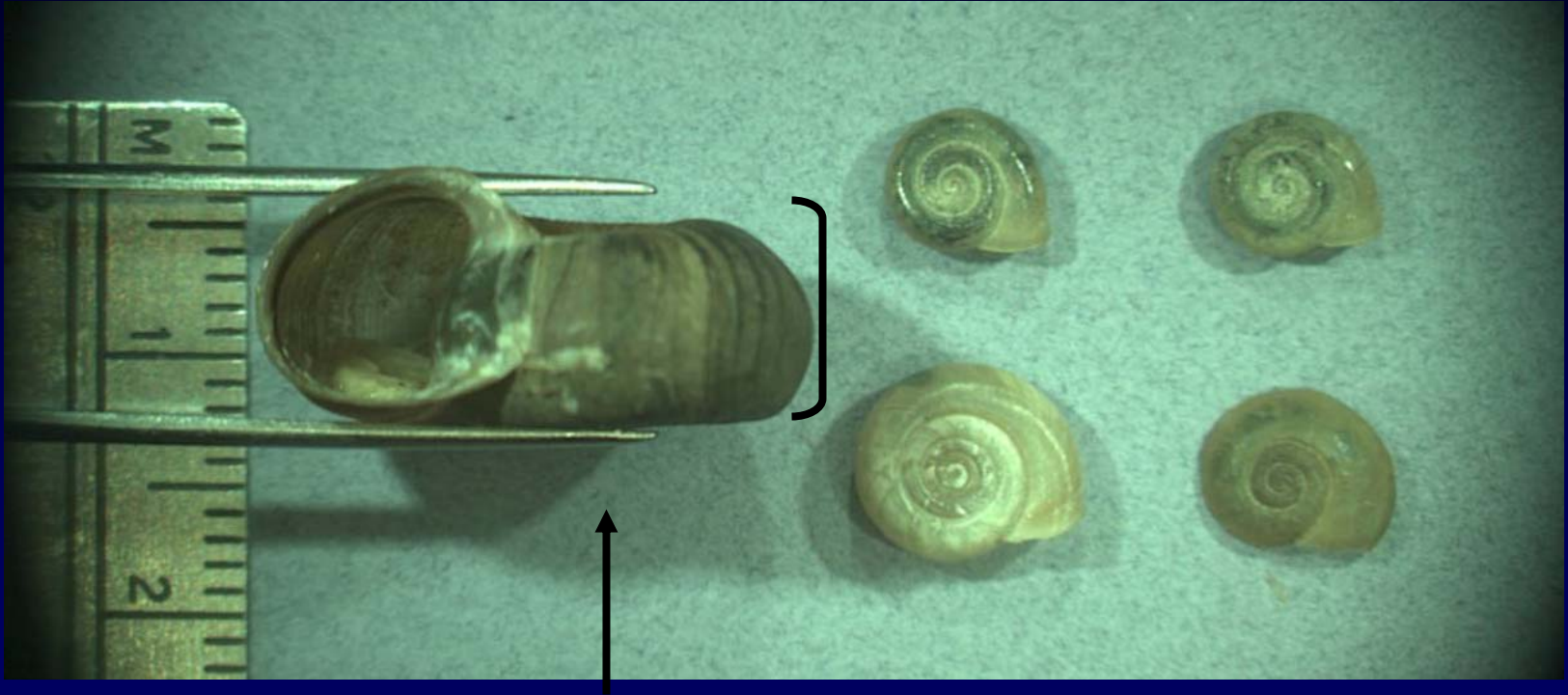


# Planar Snails



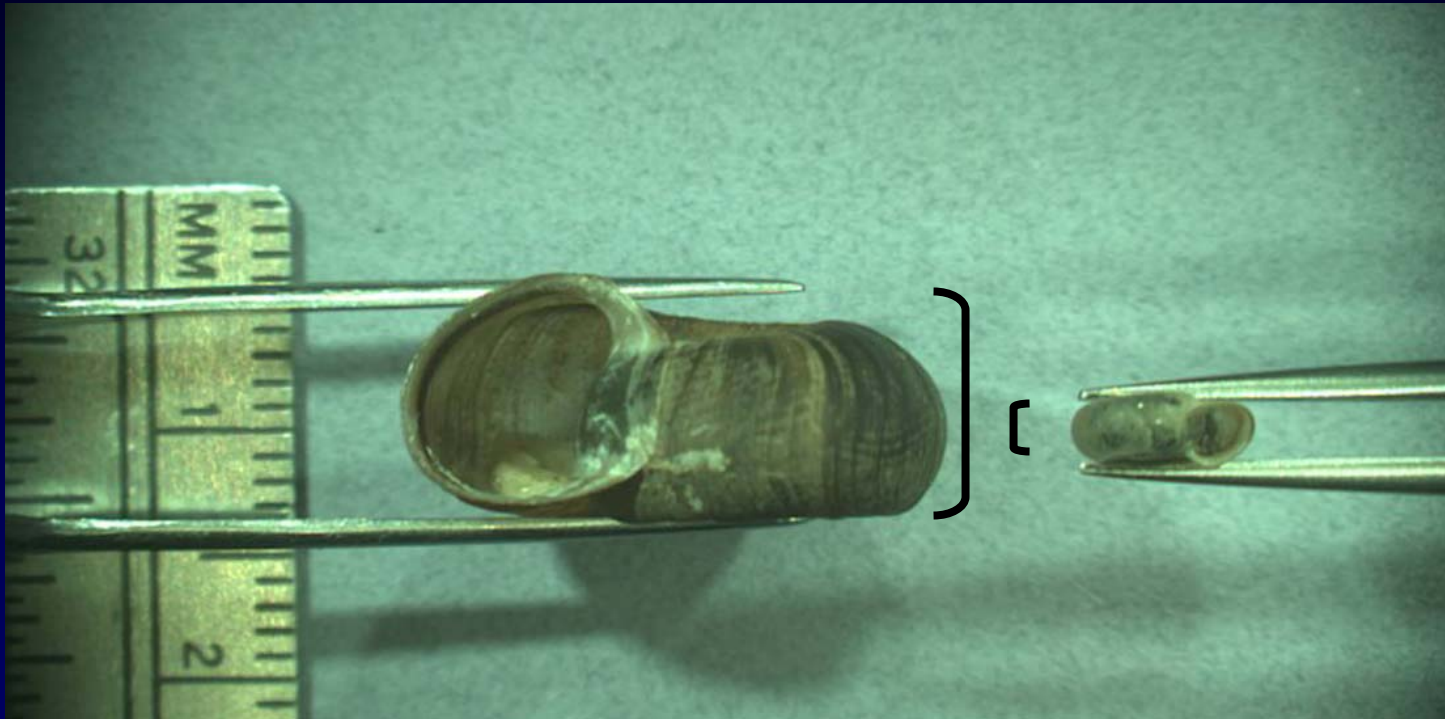
**Helisoma – mature Helisoma are much larger than other planar snails in both horizontal profile**

# Planar Snails



**Helisoma – mature Helisoma are much larger than other planar snails in both horizontal profile, and vertical profile**

# Planar Snails



**Helisoma – mature Helisoma are much larger than other planar snails in both horizontal profile, and vertical profile**

# Planar Snails - Helisoma



**Two types of Helisoma must be distinguished:  
right coiled and left coiled**

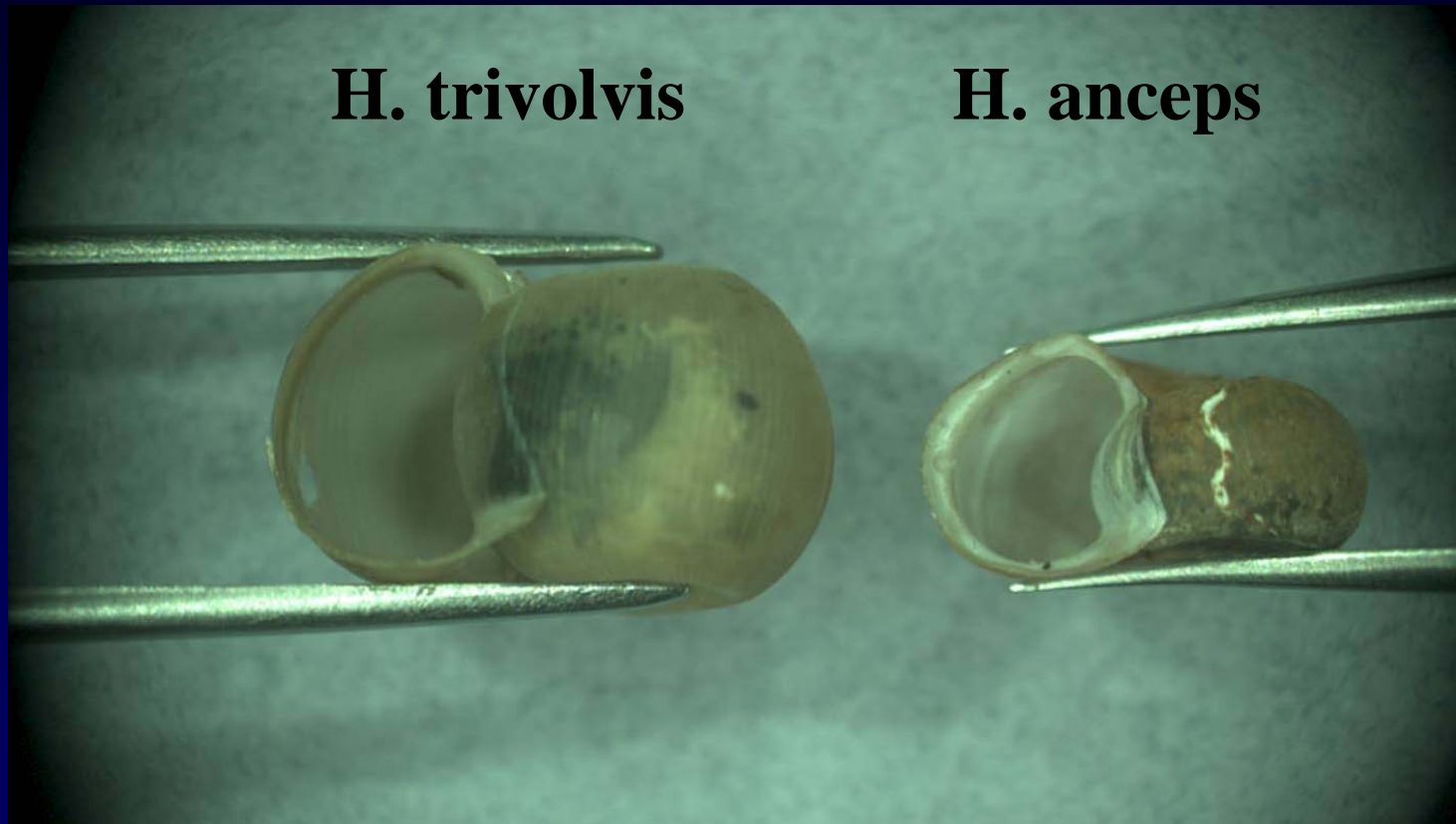
# Planar Snails - Helisoma



Two key characteristics are used to distinguish right-handed (*H. anceps*) from left handed (*H. trivolvis*)  
**Helisoma**



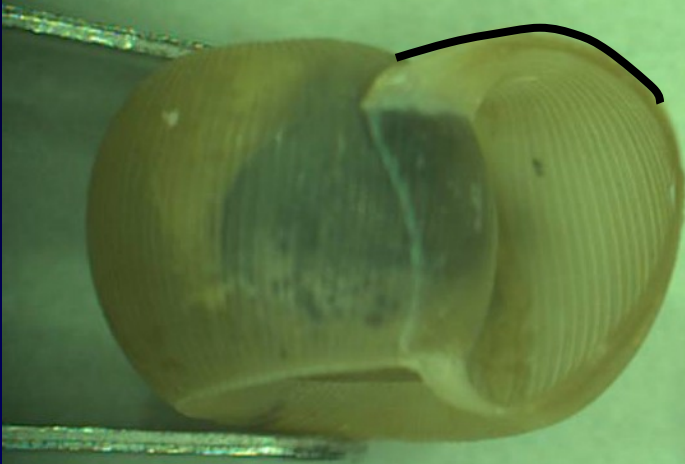
# Planar Snails - *Helisoma*



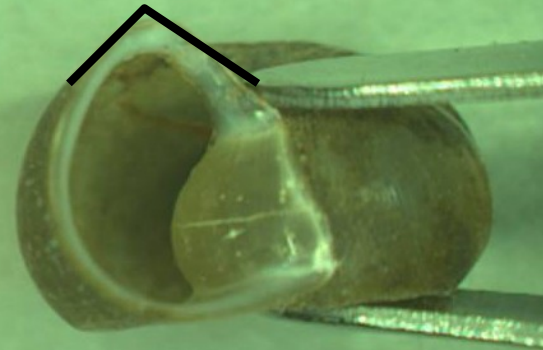
***H. anceps* has an angular opening**

# Planar Snails - Helisoma

**H. trivolvis**



**H. anceps**



**H. anceps has an angular opening**

# Planar Snails - Helisoma

Deeply indented bottom



**The umbilicus indicates which side is down**

# Planar Snails - Helisoma

Shallowly indented top

(Nearly smooth)



**The umbilicus indicates which side is down**

# Planar Snails - Helisoma

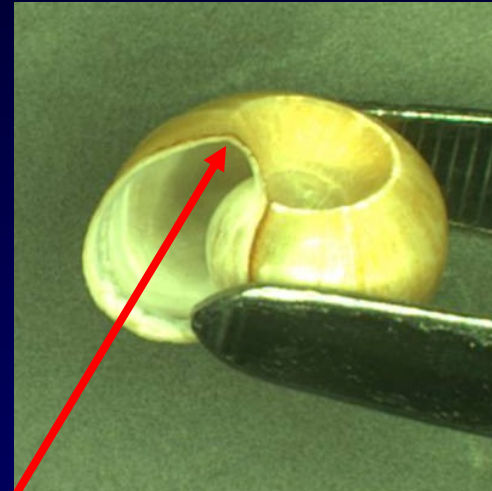
**H. Trivolvis**

**(bottom)**



**H. Anceps**

**(bottom)**



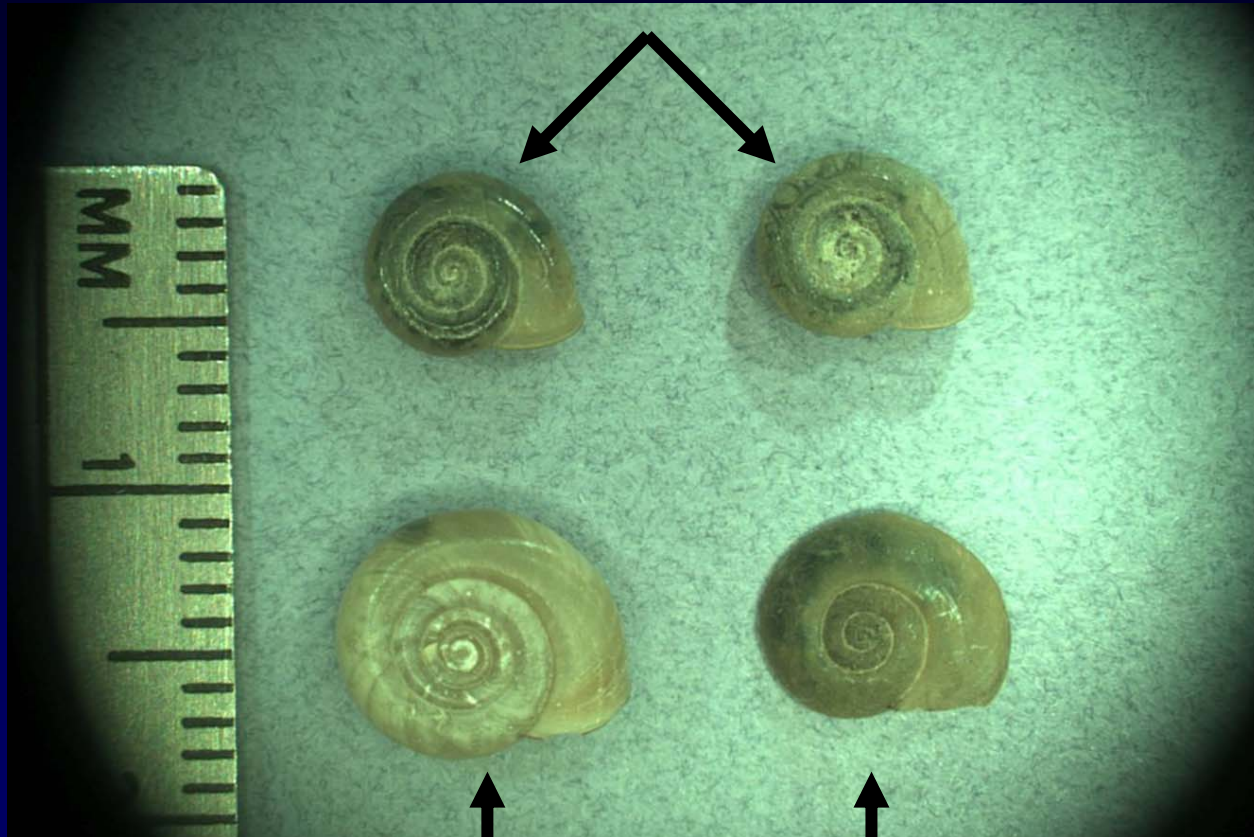
Angled opening continues along the bottom of H. anceps in the form of a sharply angular carinal ridge

# Small Planar Snails



# Small Planar Snails

**Gyraulus**

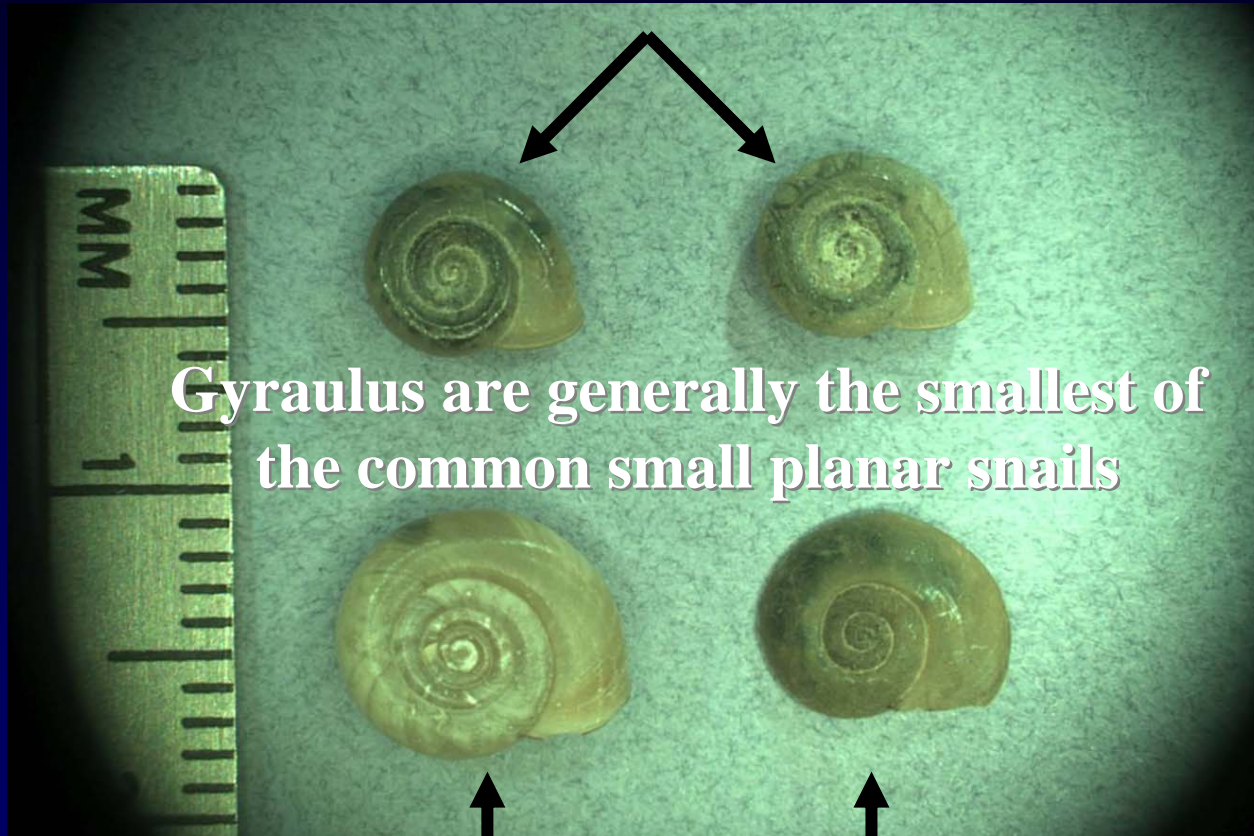


**Planorbula**

**Promenetus**

# Small Planar Snails

**Gyraulus**



Gyraulus are generally the smallest of the common small planar snails

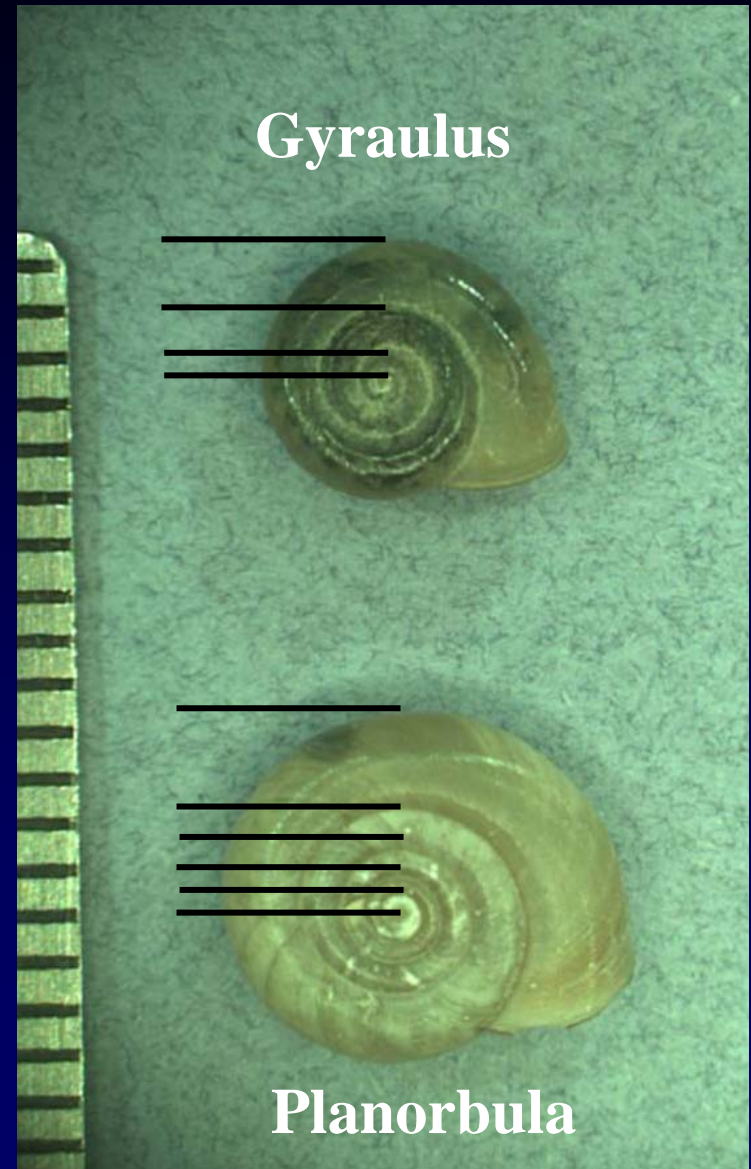
**Planorbula**

**Promenetus**

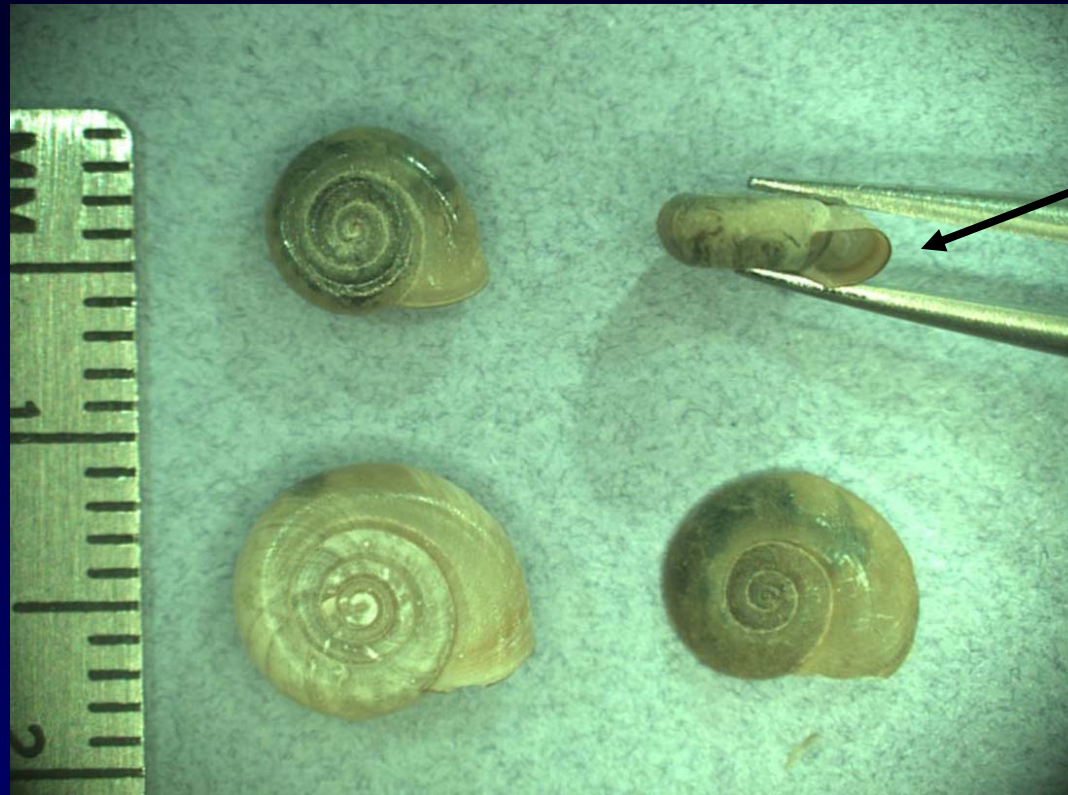


# Small Planar Snails

**Gyraulus**  
typically have  
fragile shells.  
Their whorls  
increase in size  
quickly  
compared to  
**Planorbula**



# Small Planar Snails

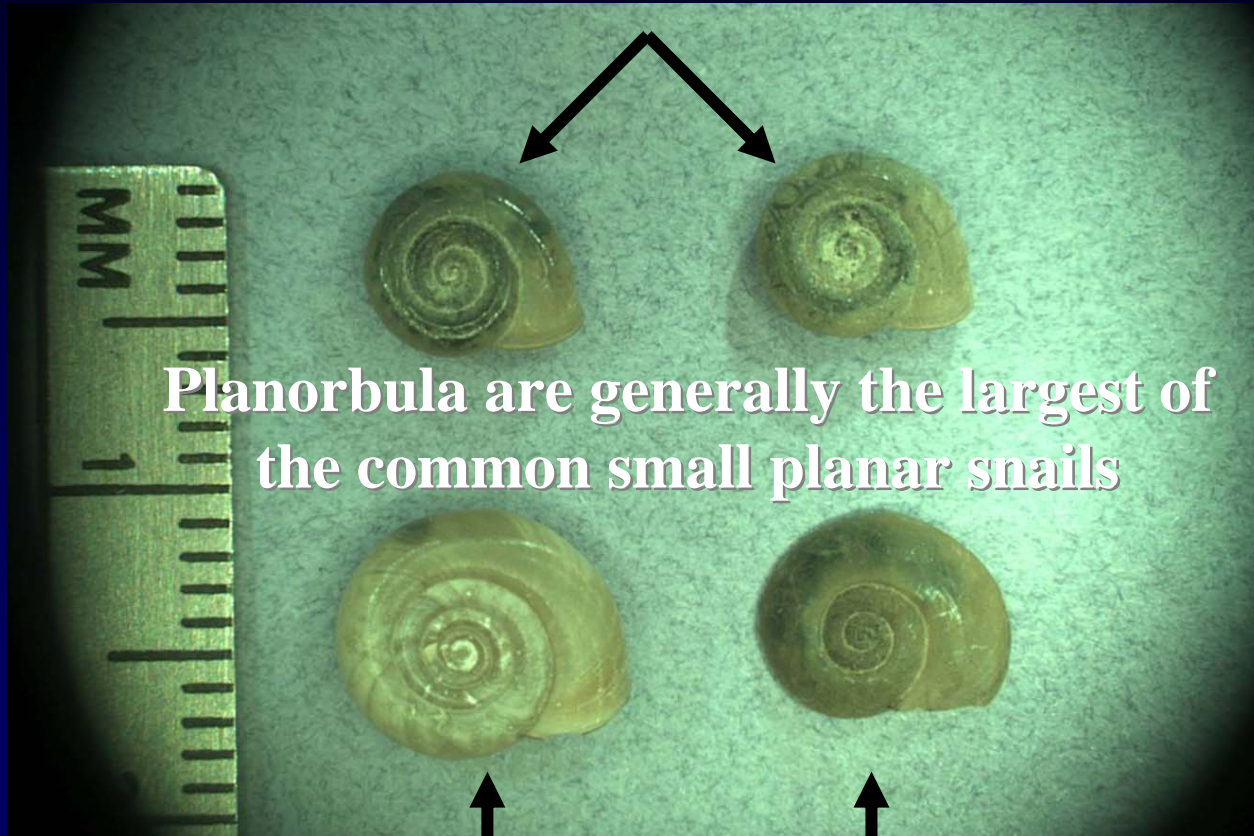


offset  
opening

**In lateral view, the opening of Gyraulus is offset below the main body of the snail**

# Small Planar Snails

**Gyraulus**



Planorbula are generally the largest of the common small planar snails

**Planorbula**

**Promenetus**

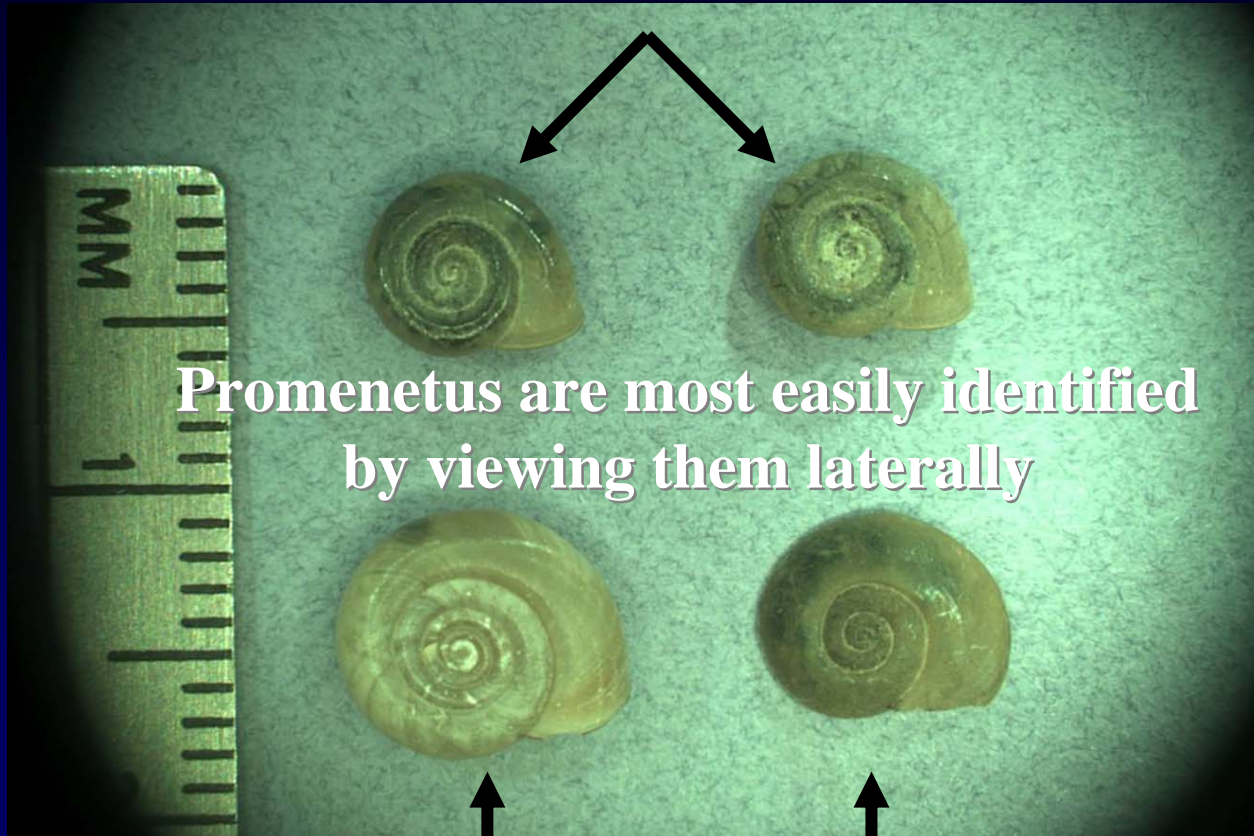
# Small Planar Snails



**In lateral view, the opening of Planorbula is even with the main body of the snail**

# Small Planar Snails

**Gyraulus**

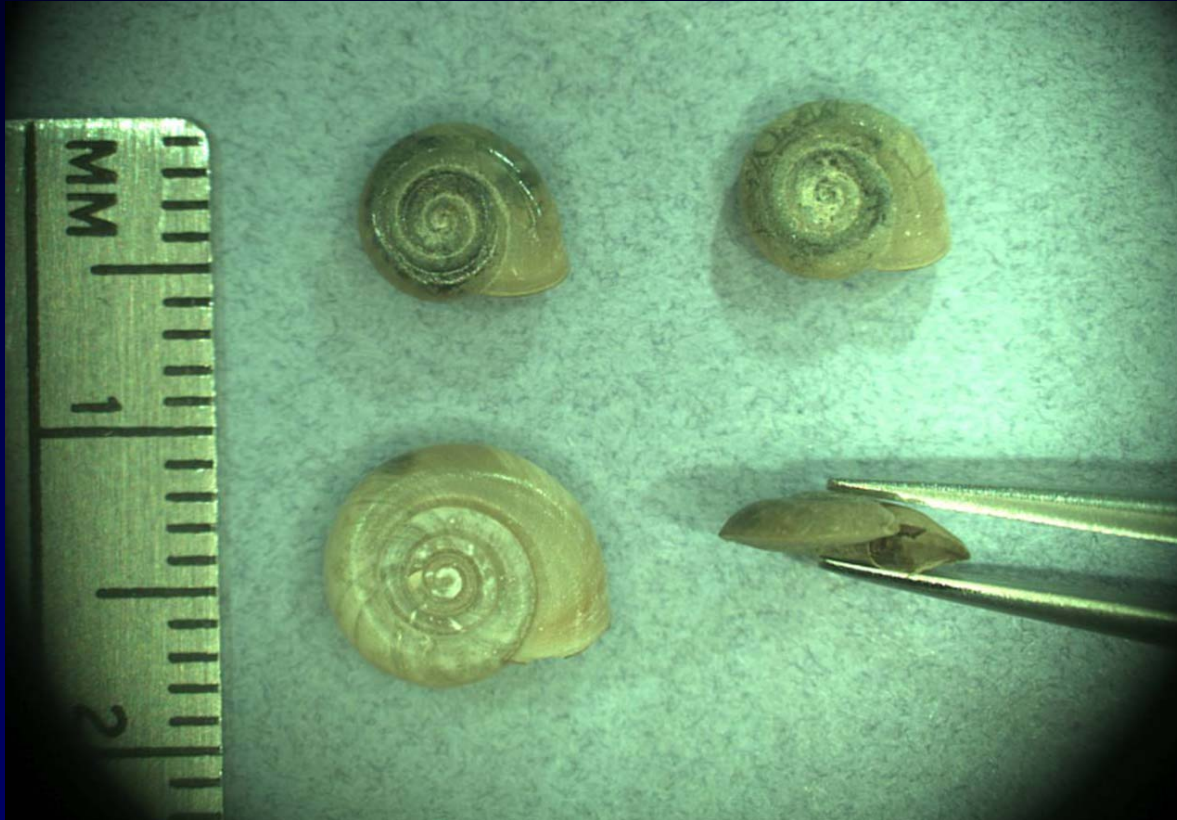


Promenetus are most easily identified  
by viewing them laterally

**Planorbula**

**Promenetus**

# Small Planar Snails



**In lateral view, the edges of *Promentus* come to a tapered edge, unlike the other small planar snails which are rounded.**

# Small Planar Snails



**Armiger crista**  
uncommon

**Gyraulus parvus**  
very common