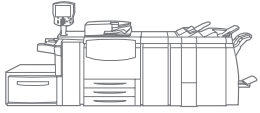


Xerox® 700  
Digital Colour Press



# Xerox 700 Digital Colour Press

A powerful performer



# A solid investment in your business

**No matter what kind of business you're in, you have to make sound decisions that will grow your business.** So before you invest in any new technology, you want to be sure that you are going to get two things: value for your money in the short term, and return on your investment in the long term.

## The Xerox 700 Digital Colour Press delivers

Whether you're looking for new revenue opportunities or that ability to reduce costs, the Xerox 700 is the first true production capable printer that makes it easy to get started in digital production printing. The Xerox 700 delivers everything you need to capture your share of the explosive growth in

digital colour printing – outstanding image quality, excellent performance, complete versatility, effortless productivity and day-in, day-out reliability. It's a powerful performer designed to delight your customers and grow your business.

With its speed, paper handling and in-line finishing capabilities\*, the Xerox 700 puts a wide range of high-value applications within your reach.

## Create value-driven coated and uncoated applications

Produce face-trimmed saddled stitched booklets, catalogues, punched documents, square folded and trimmed manuals, tri-fold brochures, variable print postcards, direct mail, photo speciality products and more.



*Above configuration not supported by the Integrated Fiery Colour Server*



## The Xerox 700 Digital Colour Press reflects everything we have learned helping thousands of printers build successful digital printing businesses.

### Image quality is key

It's the first thing your customers see.  
It's your reputation.

Your customers will love the smooth colour sweeps, sharp, high-resolution photographs, crisp, clean text, outstanding gradients and fine detail. That's because you are printing in the highest resolution available – 2400 x 2400 dpi. The Xerox 700 uses a robust transfer system to transfer the image to the page for consistent results over short, medium and long runs.

Two more points on output quality. First, you get a smooth, offset-like matte finish with outstanding shadow detail and superior halftones thanks to our newest Emulsion Aggregation (EA) toner.

Second, you get tight front-to-back registration (to within +/- 1.0 mm), important for postcards, business cards, catalogues and all two-sided work. A Contact Image Sensor detects the leading edge of the page and adjusts for registration (difficult jobs can have special operator adjustments done at the User Interface).

For added confidence the system has achieved the FOGRA Validation Print Certification, measuring colour accuracy and consistency.



### Security is part of the design blueprint

As a leader in the development of digital technology, we are committed to keeping your digital information safe and secure. We have included security features such as Secure Passwords, Data Encryption, IP Filtering, and Disk Overwrite Protection to secure company data in both our printer and print server options.



### Easy fine tuning for great results

With the Xerox 700, you have easy-to-use operator controls for making adjustments for front to back registration, perpendicularity, skew and magnification for difficult jobs. You can also create and store custom paper and alignment profiles for specific customer jobs and paper stocks.

# Everything you need to do a high quality job

## A surprising host of options and unsurpassed versatility at an equally surprising price point.

Whether you're new to digital colour or upgrading your current capabilities, the Xerox 700 Digital Colour Press has features that enable you to say yes to more and more of your customers' most demanding jobs.

Take a closer look inside and out and you'll see how the Xerox 700 is built to give you reliable performance, exceptional media handling and customer-pleasing quality, start to finish.



1

**Three Standard Paper Trays:** Along with the bypass tray, these hold 1,900 sheets of paper.

2

**Oversized High-Capacity Feeder:** For larger stocks, choose one of our robust production paper trays, holding either 2,000 or 4,000 sheets of coated or uncoated media.

Reliable paper movement prevents misfeeds. This production-class feeder has four blowers, an advanced roller system, and a centre registration system (shown).

**High-Capacity Feeder:** Optional high-capacity feeder holds 2,000 sheets of A4 paper (not shown).

3

**Image Quality:** 2400 x 2400 dpi resolution. The self-cleaning Corotron assembly offers improved productivity and image quality.

4

**Front to Back Registration:** Contact Image Sensor provides adjustments to deliver +/- 1 mm registration.

5

**Document Handler:** Holds up to A3 originals; Duplex Automatic Document Feeder (DADF) reliably scans two-sided originals automatically.

6

**User Interface:** Easier to use, offering greater flexibility, while providing more operator information and control over critical issues such as alignment and registration. It lets you create and store custom paper profiles for repeated use.

7

**Load-While-Run Toner:** Provides longer print runs and enhanced productivity. Two black toner SMart Kit™ replaceable units keep replenishment intervention to a minimum and productivity to a maximum.

SMart Kit replaceable units for toner, drum rolls, fuser and waste toner bottle raise uptime to all-time highs.



8

**Paper Path:** Straight simple paper path increases reliability.

9

**Smart Decurler Module:** You get outstanding productivity in your finishing equipment because this robust post-fuser decurler with two rollers and bars ensures that sheets are flat. The “Smart” decurler built in to the paper path takes into consideration the side, the toner coverage and the humidity, then applies the most appropriate pressure to ensure the flattest output.

10

**Optional Finishers:** Produce more valuable applications, even on coated paper, with a suite of optional finishers including: Offset Catch Tray, Advanced Finisher, Professional Finisher, Light Production Finisher, Light Production Finisher with Booklet Maker, Light Production Finisher with Booklet Maker and Folder, SquareFold® Trimmer Module, GBC AdvancedPunch and High Capacity Stacker.

11

**SquareFold Trimmer Module:** Attach to the Light Production Finisher for greater versatility and enhanced output. This optional module enables face trimming and square folding for higher quality booklets and brochures.

### An adaptable solution

Lets you choose the configuration that best suits your business model. Choose from five print servers and optional feeding and finishing modules and configure the Xerox 700 the way you want it today with the option to evolve it for tomorrow.

# Versatility from start to finish

**Professional feeding and finishing are the beginning and end of the perfect job.** You have all the options you need to make anything from coated brochures, newsletters, presentations, direct mail, booklets, and more, a great success.

**High-Capacity Feeder.** Holds up to 2,000 sheets in a wide range of weights.

**Oversized High-Capacity Feeder.** Choose from either a 2,000 or 4,000-sheet model. Both are ideal for signature booklets and other high-end applications.

**Offset Catch Tray.** 500-sheet stacking.

**Advanced Finisher.** Ideal for basic binders, manuals, reports and presentations. This finishing option offers 50-sheet, multi-position stapling and hole punching – two or four holes.

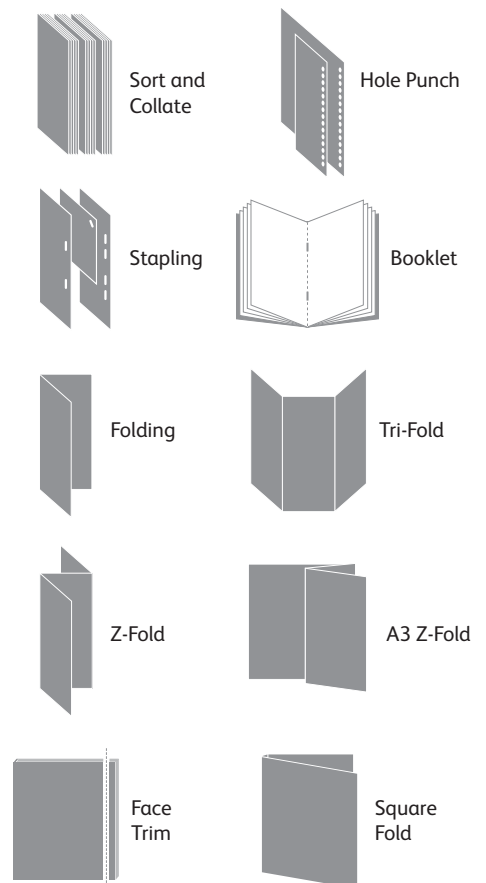
**Professional Finisher.** The choice for uncoated, high-page-count booklets, manuals, etc. In addition to the features of the Advanced Finisher, this finisher includes saddle stitching with centre fold for easy booklet making for up to a 60-page booklet and bi-fold brochure assembly.

**GBC AdvancedPunch™.** Lets you create professionally bound documents in-house by combining printing, punching and collating into one convenient step.

**Light-Production Finishers.** These versatile finishing options enable coated booklets, brochures and bi-fold mailers as well as stacking, stapling and hole punching. They also include an interposer input tray. Choose from a Light Production Finisher, Light Production Finisher with Booklet Maker or a Light Production Finisher with Booklet Maker and Folder.

**Xerox SquareFold® Trimmer Module.\*** Enhances the power of the Light Production Finisher with booklet maker with highly desired features, such as square fold of cover sheets and face trimming to produce booklets.

**High Capacity Stacker.\*** Up to 5,000-sheet stacking for long production runs.



\* Interface module required



# Choose the perfect print server to meet the demands of your business

**You get more choices and more capabilities.** These powerful servers put a variety of colour tools, workflow capabilities, processing speed and sophisticated colour management controls at your fingertips.

**Xerox Integrated Fiery®  
Colour Server\***

**EFI Splash RPX-iii™  
Colour Workflow Software**

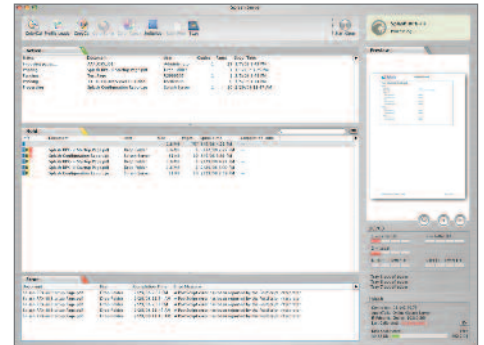
**Xerox EX Print Server,  
Powered by Fiery®**

**Xerox CX Print Server,  
Powered by Creo™**

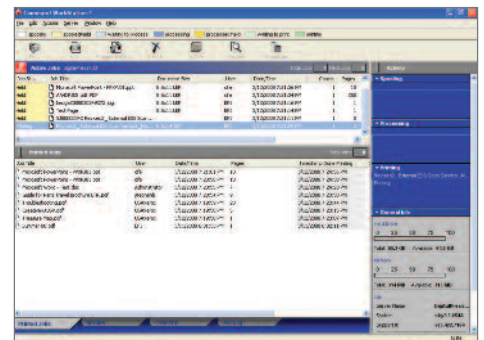
**Xerox FreeFlow® Print Server**

Each server is designed to meet a specific set of workflow and application requirements, from our standard integrated server through to our choice of professional print servers.

Your Xerox representative will help you choose the one that best suits your needs.



EFI Splash RPX-iii



Integrated Fiery Colour Server



FreeFlow® Print Server



CX Print Server



EX Print Server

\* Xerox Integrated Fiery Colour Server does not support a High Capacity Stacker and Light Production Finisher inline

## A winning business proposition

Now you can have it all – image quality, ease of use, productivity, media latitude, feeding and finishing options, and world-class workflow solutions – at a truly affordable price. Want to capture your share of the growth in digital colour printing? Want to reduce your costs while expanding your digital colour printing capabilities? Then the Xerox 700 is the answer you've been looking for.

# Xerox® 700 Digital Colour Press

## Resolution

- Print/Copy: 2400 x 2400 dpi
- Scan: 200 x 200, 300 x 300, 400 x 400, 600 x 600
- Print Server Data Path: 600 x 600 x 8
- Line Screens: 600, 300, 200 and 150 Clustered Dot, 200 Rotated Line Screen\*

## Technology

- Load-while-run capability
- Advanced Registration Technology for tighter control
- Custom paper set-up
- Xerox EA low melt toner
- Smart Kit™ replaceable units for toners, drums, fuser, charge corotron, waste bottle, staples
- Active decurling for heavy-weight media
- FOGRA Validation Print Certified System

## Integrated Scanner

- 250-sheet capacity
- 50 ppm colour / 80 ppm black and white
- Originals up to A3 in weights from 38 gsm to 200 gsm
- Duplex Automatic Document Feeder (DADF)

## Productivity/Print Speeds

Duty Cycle<sup>1</sup>: 300,000 pages per month  
AMPV<sup>2</sup>: 20,000 to 75,000 pages per month

- A4
  - 70 ppm (64-176 gsm uncoated)
  - 51 ppm (177-256 gsm uncoated)  
(106-176 gsm coated)
  - 35 ppm (257-300 gsm uncoated)  
(177-300 gsm coated)
- A3
  - 35 ppm (64-176 gsm uncoated)
  - 25 ppm (177-256 gsm uncoated)  
(106-176 gsm coated)
  - 17 ppm (257-300 gsm uncoated)  
(177-300 gsm coated)
- SRA3
  - 31 ppm (64-176 gsm uncoated)
  - 22 ppm (177-256 gsm uncoated)  
(106-176 gsm coated)
  - 15 ppm (257-300 gsm uncoated)  
(177-300 gsm coated)

## Paper Format/Sizes

- Maximum sheet size all trays: SRA3/330 x 488 mm
- Maximum print image area: 323 x 480 mm
- Maximum copy image area: 297 x 432 mm
- Minimum paper size trays 1-3: 140 x 182 mm
- Minimum paper size Bypass: 100 x 148 mm
- Minimum paper size OHCF: B5/176 x 250 mm

## Paper Flexibility/Weights

- Internal Trays 1-3: 550-sheet each, 64-220 gsm uncoated; 106-220 gsm coated
- Bypass Tray: 250 sheets, 64-300 gsm uncoated; 106-300 gsm coated
- Coated, heavyweight, transparencies, DocuMagnet®, labels, tabs. All Trays run coated stock

## Paper Capacity and Handling

- 1900 sheets up to SRA3 standard via three internal trays and bypass tray
- Maximum paper capacity: 5,900 sheets SRA3 via standard trays and two Oversized High Capacity Feeders (optional)
- Two-sided printing: Automatic up to 220 gsm coated and uncoated from all trays. Manual up to 300 gsm

## Options

- High-Capacity Feeder:
  - A4
  - 2,000 sheets up to 220 gsm
- Oversized High-Capacity Feeder (2,000-sheet option):
  - 64-300 gsm uncoated
  - 106-300 gsm coated
  - 182 x 250 mm/B5 to SRA3/330 x 488 mm
  - Auto duplex up to 220 gsm coated and uncoated
  - Manual duplex up to 300 gsm
- Oversized High-Capacity Feeder (4,000-sheet option):
  - Specifications as for 2,000-sheet option above
- Offset Catch Tray
  - 500-sheet stacking
- Advanced Finisher:
  - 500-sheet top tray
  - 3,000-sheet stacker tray
  - Multi-position stapling
  - Hole punching
- Professional Finisher
  - 500-sheet top tray
  - 1,500-sheet stacker tray
  - Stapling up to 50 sheets
  - Hole punching
  - Bi-fold, saddle stitch booklet maker up to 15 uncoated sheets
- GBC AdvancedPunch™:
  - Punch configurations available in A4

- Light Production Finisher:
  - 500-sheet top tray
  - 3,000-sheet stacker tray
  - Multi-position hole punching and stapling
  - Stapling up to 100 sheets
  - 200-sheet interposer
- Light Production Finisher with Booklet Maker:
  - 500-sheet top tray
  - 3,000-sheet stacker tray
  - Multi-position hole punching and stapling
  - Stapling up to 100 sheets
  - 200-sheet interposer
  - Booklet Maker for coated/uncoated bi-fold or saddle-stitch coated/uncoated booklets up to 25 sheets
- Light Production Finisher with Booklet Maker and Folder:
  - 500-sheet top tray
  - 3,000-sheet stacker tray
  - Multi-position hole punching and stapling
  - Stapling up to 100 sheets
  - 200-sheet interposer
  - Booklet Maker for coated/uncoated bi-fold or saddle-stitch coated/uncoated booklets up to 25 sheets
  - Folding Module for tri-fold and z-fold (A4 and A3)
- SquareFold® Trimmer Module:
  - Square fold up to 25 sheets
  - Face trim between 2 – 20 mm in 0.1mm increments
  - Paper weights 64 gsm – 300 gsm coated and uncoated
- High Capacity Stacker:
  - 500-sheet top tray
  - 102 x 142 mm to SRA3
  - 5,000-sheet main tray
  - 182 x 257 mm to SRA3
- Convenience Stapler
  - Staple up to 50 sheets of 90 gsm
- Foreign Interface Kit
  - The Foreign Interface Kit enables the connection of external devices such as auditrons or coin-operation devices. This will perform in copy and print modes

## Choice of Print Servers

- Integrated Fiery® Colour Server
- EFI™ Splash RPX-iii
- EX Print Server
- CX Print Server
- FreeFlow® Print Server

## Electrical

- Printer: 200 - 240 VAC/50/60 Hz
- Options: 100 - 240 VAC 50/60 Hz

## Dimensions (print engine only)

- Height: 1,372 mm
- Width: 1,714 mm
- Depth: 777 mm

\* Depending on Print Server

<sup>1</sup> Maximum volume capacity expected in any one month.

Not expected to be sustained on a regular basis.

<sup>2</sup> Average monthly print volume - expected regular monthly print throughput

[www.xerox.com](http://www.xerox.com)

