

North Carolina Shell Club

Auction

Sampler Catalog 2

Individual and Small Group Lots

7 November 2015 7 PM



North Carolina Shell Club

Auction

Sampler Catalog 2

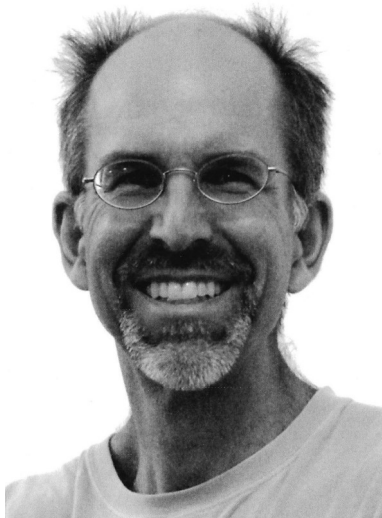
Individual and Small Group Lots

7 November 2015 7 PM

This second auction catalog includes individual and small groups of shells. It is intended strictly as a sample of shells that will be on the block for bidding at the auction, November 7. Based on past years I expect more shells to be donated to the club for this auction, many at the meetings that weekend thus I can only whet your appetite for what will be available. Even if there is nothing here of great interest one never knows what will walk in the door at the last moment.

There are some really fabulous shells this year. Twenty six lots are featured here.

If you cannot attend the auction, but see something you really must have, consider a friend proxy bidding for you.



John Timmerman/ Auction Chair



Beech Cone

Conus betulinus Linnaeus, 1758
Donated by Ruth and Scotty Drye
Philippines 118 mm



Milk Conch

Strombus costatus Gmelin, 1791
Donated by Ed Shuller/Jeanette Tysor
Dominican Republic
148 mm w/op.



Saul's Murex

Chicoreus saulii (Sowerby, 1841)
Donated by Bill Bennight
Okinawa, Japan
119 mm, w/op.



Amadis Cone

Conus amadis Gmelin, 1791 (pair)
Donated by Jan Holloman
Indian Ocean 73 mm; 73 mm



This is a monster sized specimen and in superb condition!



Eglantine Cowrie
Cypraea eglantina Duclos, 1833
Donated by Ruth and Scotty Drye
Philippines 66 mm
Greenish overglaze



Baird's Margarite
Bathybembix bairdii (Dall, 1889)
Donated by Sue Hobbs & Phil Dietz
Pacific Northwest 48 mm w/op. w/perio.



Calliotectum johnsoni johnsoni Bartsch, 1942
Donated by Karlynn Morgan
Philippines 135 mm w/op. w/perio.



Fimbriate Helmet
Cassis fimbriata Quoy & Gaimard, 1833
Donated by Karlynn Morgan
Australia 90 mm w/op.



68 mm w/op



98 mm w/op

Banded Tulip (lot of 2 specimens)
Cinctura hunteria keatonorum Petuch, 2013
Donated by Vicky Wall

Cincturia hunteria (Perry, 1811)
Donated by Ruth and Scotty Drye

The offshore, pink colored Banded Tulip of North Carolina is an interesting occurrence. Vicky found specimens washed ashore at North Top Sail Island, North Carolina, after an especially intense winter storm in the spring of 1993. I have found this variant washed ashore at Fort Fisher and Shackleford Banks. It was caught by the *Argopecten gibbus* fishery that operated off Beaufort, NC. Thus examples are recorded from the breadth of Onslow Bay. Further study will be needed to confirm if this is a range extension of the classification sited here or represents an entirely new, undescribed subspecies.

To complete the offering we include a specimen of the shallow water form.



148 mm w/perio.

Donated By Everett Long



167 mm w/perio.

Donated by Ed Shuller/Jeanette Tysor

Peruvian Conch (lot of 2 specimens)
Strombus (Lobatus) peruvianus (Swainson, 1823)

Panama

Left: beautiful specimen with fully preserved periostracum.
Right: huge gerontic specimen with periostracum and erosion on the dorsum.
Both specimens were self-collected by the donors.



Radish Murex (lot of 2 specimens)
Hexaplex radix (Gmelin, 1791)

Donated By Everett Long

Panama

86 mm; 86 mm w/op

This species presented an interesting conundrum. I could not use the standard format with these shells as they would go into “stealth mode” due to being an example of a minority of shell species that are truly black.



Great Spotted Cowrie
Perisserosa guttata (Gmelin, 1791)

Donated by Susan O'Connor
East China Sea 57 mm
This is the sub-specific form *azumai*



Tortoise Cowrie
Chelycypraea testudinaria (Linnaeus, 1758)

Donated by Ruth and Scotty Drye
Indo Pacific 94 mm



Atlantic Deer Cowrie (lot of 2 specimens)
Macrocypraea cervus lindseyi Petuch, 2013

Donated by Glenn Duffy
Cuba 74 mm; 46 mm
This is a dwarf population endemic to Cuba.



Map Cowrie
Leporicypraea mappa (Linnaeus, 1758)

Donated by Sue Hobbs & Phil Dietz
New Caledonia 62 mm



Junonia (lot of 2 specimens)
Scaphella junonia (Lamarck, 1804)

Donated by Karlynn Morgan
Gulf of Mexico 85 mm; 89 mm
These were collected by a scuba diver thus have more complete data than scallop trawler bi-catch specimens.



Golden Cowrie (lot of 3 specimens)
Lyncina aurantium (Gmelin, 1791)

Donated by Ruth and Scotty Drye, Sue Hobbs & Phil Dietz, Jan Holloman

Philippines 87 mm – 90 mm

Note: These are less than perfect specimens. Within recent memory any one of these shells would have been a most prized addition to our cabinets. The species presents an example where enterprising fishermen figure out how to bring lots of something formerly rare to the market. Fine, extra-large examples sell for a premium but still at a fraction of former prices. I can attest that there is a certain excitement to simply holding three of these in hand at one time even if there are better examples in my cabinet. They may be relatively common now, but the legend lives on.



Atlantic Surf Clam
Spissula solidissima (Dilwyn, 1817)

Donated By Everett Long

Off Delaware, USA 200 mm

This mollusk unlike the Golden Cowrie, has always been abundant to collectors. Even abundant shells can stand out. This is a monster sized one. I only ever found long dead singles of this magnitude washed ashore in New Jersey where after winter storms I would find them by the thousands washed ashore. This one was taken in 1966 by a dredge working the for the commercial soup industry. It may be an abundant species but the size will make it a standout in any collection.



Widest Pacific Conch
Sinustrombus latissimus (Linnaeus, 1758)

Donated by Bill Bennight

Okinawa, Japan 188 mm w/op
Delicate thin lip



Thersite Stromb
Thersistrombus thersites (Swainson, 1823)

Donated by Ruth and Scotty Drye
West Pacific 146 mm w/op.



Regal Murex
Hexaplex regius (Swainson, 1821)

Donated by Ed Shuller/Jeanette Tysor
West Mexico 133 mm w/op



Ranzani's Triton
Cymatium ranzani (Bianconi, 1851)

Donated By Everett Long
Oman 154 mm ex. Bosch collection



African Slit Shell
Bayerotrochus teramachii (Kuroda, 1955)

Donated By Everett Long
Philippines 104 mm

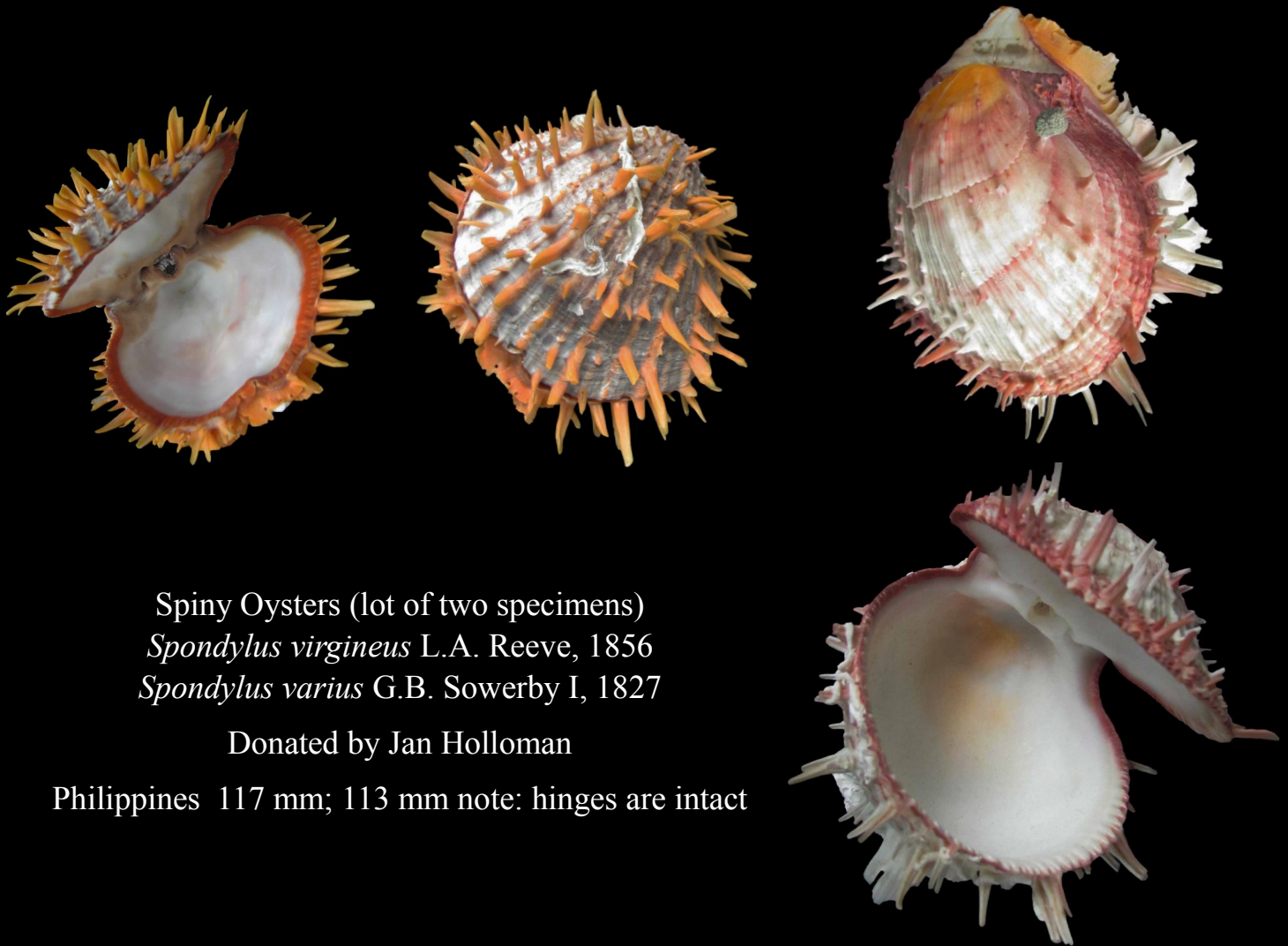


Spiny Oysters (lot of 2 specimens)
Spondylus virgineus L.A. Reeve, 1856
Spondylus squamosus K. Schreibers, 1793

Donated by Ed Shuller/Jeanette Tysor

Philippines 78 mm; 73 mm note: hinges are intact

That is a Pecten valve the *S. virgineus* attached itself to.



Spiny Oysters (lot of two specimens)
Spondylus virgineus L.A. Reeve, 1856
Spondylus varius G.B. Sowerby I, 1827

Donated by Jan Holloman

Philippines 117 mm; 113 mm note: hinges are intact