

## Familias y subfamilias de mariposas

Las mariposas se clasifican en seis familias que agrupan especies con características comunes.

### Hesperiidae

Esta familia de mariposas primitivas tiene como característica las antenas con ganchito en la parte final. Tienen cabeza y cuerpo grueso y muchas tienen colores oscuros o cafés. 4 subfamilias.



Eudaminae  
Spreadwing skippers



Pyrginae  
Spreadwing skippers



Pyrginae  
Firetips



Heteropterinae  
Skipperlings



Hesperiinae  
Grass Skippers

## Butterfly families and subfamilies

The butterflies are classified into six families comprising species with common characteristics.

### Skippers

Mostly small with stout bodies, fast fliers, skipping or zipping flight. Many are brown or dark, drab colors. A large family, about 30% of all butterflies. Eudaminae and Pyrginae sit with wings spread open, Heteropterinae often sit with wings closed, Hesperiinae often sit in jet plane position. 4 subfamilies.

## Papilionidae

Mariposas grandes, muchas con colas. Vuelan con fortaleza y les gusta posarse en pantanos o zonas húmedas moviendo constantemente las alas. La mayoría son negras con rayas amarillas o negras con parches rojos en las alas posteriores.

Las antenas tienen la parte final engrosada y curvada.



Papilioninae



Swallowtails



## Swallowtails

Mostly large butterflies, many with tails. Strong fliers, they like to mudpuddle on wet dirt with constantly moving, quivering wings. They are mostly black with yellow stripes or black with red patches on the hindwings (Parides).

The antenna is bulky and curved at the end????

## Pieridae

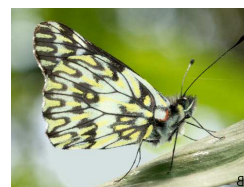
La mayoría de pierides son amarillas, blancas o naranja, aunque hay algunas negras. Las pierides visitan flores y son comunes en jardines, pero las dismorfias prefieren los bosques sombreados. Tienen 3 subfamilias.



Dismorphiinae  
Mimic-Whites



Pierinae



Whites



Coliadinae



Sulphurs

## Whites and sulphurs

Mostly white, yellow or orange, but some are black. Whites and Sulphurs like flowers and are often in gardens, but Dismorphiinae like the shaded forest. They have 3 subfamilies.

## Riodinidae

La mayoría de riodinidos se encuentran en tierras bajas, es una familia con mucha variedad. Muchas tienen manchas metálicas y se posan por debajo de las hojas. Algunas tienen colas. Tienen dos subfamilias.



Euselasiinae Metalmarks



Riodininae



Metalmarks



## Metalmarks

More species are found in the lowlands. This is the most varied family; they can come in many shapes, sizes and colors. Some have tails, many do not. Some genera sit with wings closed, some with wings open. They pose under the leaves. They have 2 subfamilies.

## Lycaenidae

En general los licénidos son mariposas pequeñas, muchas tienen colas pequeñas para distraer a los predadores. Son difíciles de ver pues muchas viven en el docel. A menudo son azules al abrir las alas. Tienen 2 subfamilias.



Polyommatinae Blues



Theclinae



Hairstreaks

## Hairstreaks and blues

Hairstreaks often have tails, but not always. This is the least common of the 6 families, often in the canopy and hard to see. Small butterflies, often brilliant blue above. They have 2 subfamilies.

## Nymphalidae

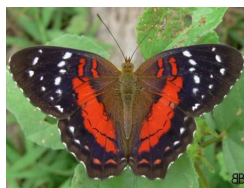
Las nifáides solo tienen 4 patas visibles, las otras 2 están acortadas y cerca a la cabeza como escobas. Es la familia más abundante y representa 40% del total. Tiene 10 subfamilias.

## Brushfoots

Only show 4 walking legs, the front 2 legs are held up close to the head, like brushes. This is the largest family, about 40%, many subfamilies.



Heliconiinae  
Longwings



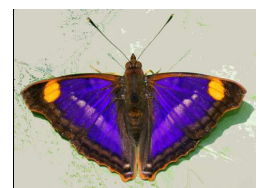
Nymphalinae  
Brushfoots Crescents



Limenitidinae  
Sisters



Charaxinae  
Leafwings



Apaturinae  
Emperors



Satyrinae  
Satyrs, Morphos



Danainae  
Clearwings



Danainae  
Monarchs



Cyrestinae  
Daggerwings



Biblidinae  
Tropicals



# Hesperiidae

## Skippers

### Eudaminae

#### Spreadwing Skippers

Se posan con las alas abiertas, muchas tienen colas y puntos o rayas en las alas delanteras.

Sit with wings open, many have tails and spots or stripes on the forewing.



*Astraptus chiriquensis chiriquensis*



*Astraptus chiriquensis chiriquensis*



*Astraptus chiriquensis chiriquensis*



*Astraptus fuligator fuligator*



*Astraptus fuligator fuligator*



*Astraptus fuligator fuligator*



*Astraptus fuligator fuligator*



*Astraptus fuligator fuligator*



*Astraptus fuligator fuligator*



*Autochton zarex*



*Autochton zarex*



*Autochton zarex*





*Epargyreus sp minca*



*Epargyreus sp minca*



*Epargyreus spina spina*



*Epargyreus spina spina*



*Urbanus dorantes dorantes*



*Urbanus dorantes dorantes*



*Urbanus dorantes dorantes*



*Urbanus dorantes dorantes*



*Urbanus simplicius*



*Urbanus simplicius*



*Urbanus sp blue*



*Urbanus sp blue*



*Urbanus teleus*



*Urbanus teleus*



*Urbanus teleus*





*Urbanus viterboana*



*Urbanus viterboana*



*Urbanus viterboana*

**Pyrginae**

**Spreadwing Skippers**

Se posan con las alas abiertas, en la tribu Pyrrhopigine muchos tienen punta roja en el abdomen.

Tribe Pyrrhopygini/Golf-club Skippers or Firetips – sit with wings open, some have red tips to abdomen. Tip of antennae bent over at 90 degree angle, like a golf club. Powerful fliers, strong bodies and wings, can buzz you. Some very colorful. Other spr



*Mimardaris aerata*



*Mimardaris aerata*



*Mimardaris aerata*



*Mylon cajus cajus*



*Mylon cajus cajus*



*Mylon cajus cajus*



*Mylon lassia*



*Mylon lassia*



*Sostrata bifasciata leucorrhoea*





*Sostrata bifasciata leucorrhoea*



*Sostrata bifasciata leucorrhoea*



*Sostrata bifasciata leucorrhoea*



*Sostrata bifasciata leucorrhoea*



*Theages albiplega*



*Theages albiplega*



*Theages albiplega*



*Theages albiplega*



*Achlyodes pallida*

♀



*Achlyodes pallida*



*Achlyodes pallida*



*Eantis thraso*



*Eantis thraso*



*Eantis thraso*



*Eantis thraso*





*Ouleus fridericus*



*Ouleus fridericus*



*Ouleus fridericus*



*Ouleus fridericus*



*Ouleus fridericus*

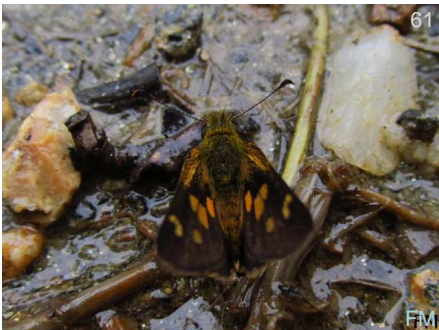


*Staphylus vulgata*

## Heteropterinae

### Skipperlings

The Dallas – most sit with forewings up, like grass skippers. Often have large gold or orange patterns on underside. Found on wet dirt at higher elevations, some very high. Not in the lowlands. Many very confusing species.



*Dalla mesoxantha*



*Dalla mesoxantha*



*Dalla mesoxantha*



*Dalla mesoxantha*



*Dalla mesoxantha*



*Dalla mesoxantha*





*Dalla mesoxantha*



*Dalla mesoxantha*



*Dalla sp pedro snlrnzo*

## Hesperiinae

### Grass Skippers

Sit in 'jet plane' position, with forewings straight up and hindwings out flat. Many are orange and black, or brown. Many can only be separated by genitalic dissection. Small butterflies, some like flowers in gardens, some like shaded forest.



*Orphe gerasa*



*Saliana triangularis*



*Saliana triangularis*



*Saliana triangularis*



*Callimormus radiola radiola*



*Cymaenes trebius*



*Cymaenes trebius*



*Cymaenes trebius*



*Cymaenes trebius*





*Cymaenes trebius*



*Cymaenes trebius*



*Cymaenes trebius*



*Lucida lucia Scopas*



*Lucida lucia Scopas*



*Lucida lucia Scopas*



*Lucida lucia Scopas*



*Lucida lucia Scopas*



*Niconiades viridis vista*

♀



*Niconiades viridis vista*

♀



*Niconiades viridis vista*



*Niconiades viridis vista*

♀



*Psoralis degener*

♀



*Psoralis degener*

♀



*Vehilius stictomenes stictomenes*

♂





*Vehilius stictomenes stictomenes* ♀



*Vehilius stictomenes stictomenes* ♀



*Vehilius stictomenes stictomenes* ♀



*Vehilius stictomenes stictomenes*



*Vehilius stictomenes stictomenes*



*Vehilius stictomenes stictomenes*



*Vehilius stictomenes stictomenes*



*Vehilius stictomenes stictomenes*



*Vehilius stictomenes stictomenes*



*Vehilius stictomenes stictomenes*



*Vehilius stictomenes stictomenes*



*Vehilius stictomenes stictomenes*



*Vehilius stictomenes stictomenes*



*Vehilius stictomenes stictomenes*



*Vehilius stictomenes stictomenes*





*Vettius coryna coryna*



*Vettius coryna coryna*



*Vettius marcus*



*Vettius marcus*



*Vettius marcus*



*Poanes inimica*



*Poanes inimica*



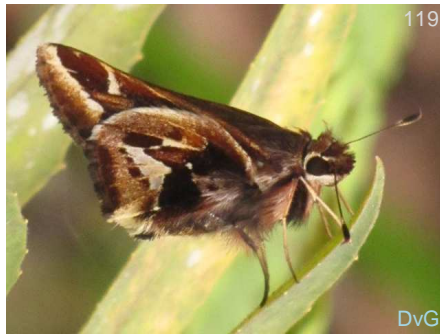
*Poanes inimica*



*Poanes inimica*



*Thespieus othna tinka*



*Thespieus othna tinka*



*Thespieus othna tinka*



*Thespieus othna tinka*



*Thespieus tihoneta ovallei*



*Thespieus tihoneta ovallei*





*Thespies tihoneta ovallei*



*Thespies tihoneta ovallei*



*Thespies tihoneta ovallei*



*Thespies tihoneta ovallei*



*Thespies tihoneta ovallei*



*Thespies tihoneta ovallei*



*Thespies tihoneta ovallei*



## Papilionidae

### Swallowtails

#### Papilioninae

#### Swallowtails



*Heraclides androgeus epidaurus* ♂



*Heraclides androgeus epidaurus* ♂



*Heraclides androgeus epidaurus* ♂



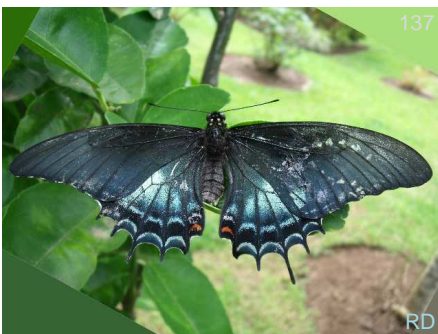
*Heraclides androgeus epidaurus* ♂



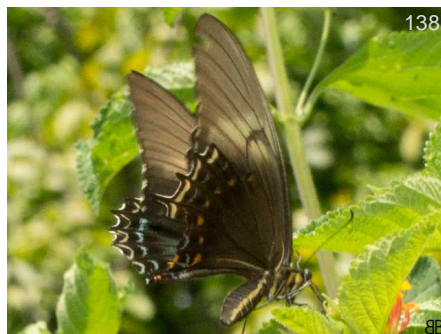
*Heraclides androgeus epidaurus* ♂



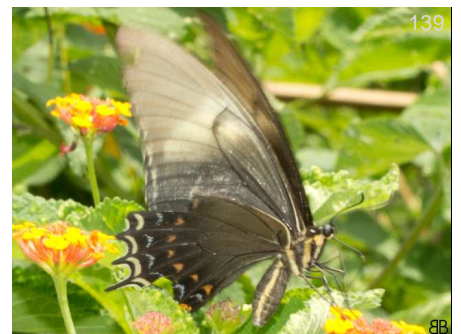
*Heraclides androgeus epidaurus* ♀



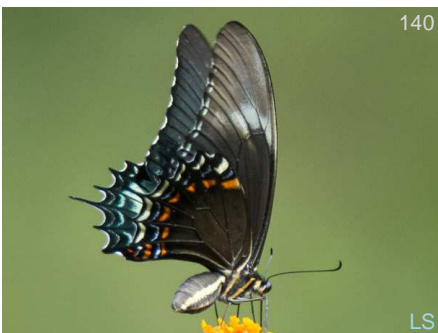
*Heraclides androgeus epidaurus* ♀



*Heraclides androgeus epidaurus* ♀



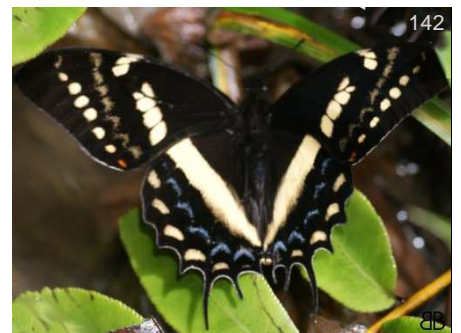
*Heraclides androgeus epidaurus* ♀



*Heraclides androgeus epidaurus* ♀



*Parides iphidamas*



*Pterourus cacicus cacicus*





*Pterourus cacicus cacicus*



*Pterourus cacicus cacicus*



## Pieridae

### Whites and Sulphurs

#### Dismorphiinae

##### Mimic-Whites

Odd shaped forewings, smaller butterflies, prefer shaded areas. They are pale yellow or white with black marking on the dorsals. Females have rounder forewings. Sit with wings closed.



*Dismorphia crisis foedora* ♂



*Dismorphia crisis foedora* ♂



*Dismorphia crisis foedora* ♂



*Dismorphia crisis foedora* ♀



*Dismorphia crisis foedora* ♀



*Dismorphia crisis foedora* ♀



*Dismorphia crisis foedora* ♀



*Dismorphia crisis foedora* ♀



*Dismorphia crisis foedora* ♀



*Dismorphia crisis foedora*



*Dismorphia crisis foedora*



*Dismorphia medora medora*





*Dismorphia medora medora*



*Lieinix nemesis nemesis* ♂



*Lieinix nemesis nemesis* ♂



*Lieinix nemesis nemesis* ♂



*Lieinix nemesis nemesis* ♀



*Lieinix nemesis nemesis* ♀

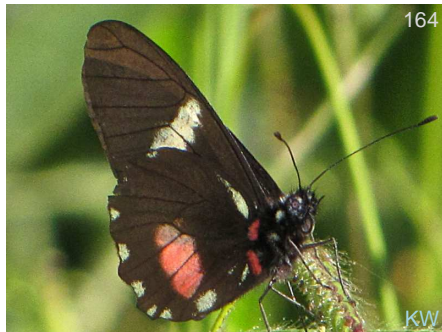
Pierinae

Whites

Variable, many are white but some are black with narrow white, yellow or even red patches. Many species of *Catasticta* are very difficult to separate from a live ventral photo. They like to come to wet sand or edges of flowing water. Sit with wings closed



*Archonias brassolis approximata*



*Archonias brassolis approximata*



*Archonias brassolis approximata*



*Archonias brassolis approximata*



*Catasticta chrysolopha chrysolopha*



*Catasticta chrysolopha chrysolopha*





*Catasticta chrysolopha chrysolopha*



*Catasticta chrysolopha chrysolopha*



*Catasticta chrysolopha chrysolopha*



*Catasticta flisa postaurea*



*Catasticta flisa postaurea*



*Catasticta flisa postaurea*



*Catasticta lycurgus*



*Catasticta philais philais*



*Glutophrissa drusilla drusilla*



*Glutophrissa drusilla drusilla*



*Glutophrissa drusilla drusilla*



*Leptophobia aripa aripa*



*Leptophobia aripa aripa*



*Leptophobia aripa aripa*



*Leptophobia aripa aripa*





*Leptophobia eleone denigrata*



*Leptophobia eleone denigrata*



*Melete lycimnia eurymnia*



*Pereute charops*



*Pereute charops*



*Pereute charops*



*Pereute charops*



*Pereute charops*

**Coliadinae**

**Sulphurs**

Some large, but most are medium to smaller sizes. Common in meadows and gardens, roadside edges. Difficult to separate to species just on ventral live photos, you often need to see the pattern of the black on the edges of the upper wings. Sit with wings c



*Anteos clorinde*



*Anteos clorinde*



*Anteos clorinde*





*Eurema albula albula*



*Eurema elathea vitellina*



*Eurema elathea vitellina*



*Eurema elathea vitellina*



*Eurema elathea vitellina*



*Eurema phiale columbia*



*Eurema phiale columbia*



*Eurema phiale columbia*



*Eurema salome santamarta*



*Phoebis neocypris rurina*



*Phoebis neocypris rurina*



*Phoebis neocypris rurina*



*Phoebis philea philea*



*Phoebis philea philea*



*Phoebis philea philea*





*Phoebis philea philea* ♀



*Phoebis philea philea* ♀



*Phoebis philea philea*



*Phoebis philea philea*



*Pyrisitia proterpia*



*Pyrisitia proterpia*



*Pyrisitia proterpia*



*Pyrisitia proterpia*



## Riodinidae

### Metalmarks

#### Riodininae

#### Metalmarks



*Mesosemia telegone telegone* ♂



*Mesosemia telegone telegone* ♂



*Mesosemia telegone telegone* ♂



*Mesosemia telegone telegone* ♀



*Mesosemia telegone telegone* ♀



*Mesosemia telegone telegone* ♀



*Mesosemia telegone telegone* ♀



*Mesosemia telegone telegone* ♀



*Mesosemia telegone telegone* ♀



*Mesosemia telegone telegone*



*Mesosemia telegone telegone*



*Mesosemia telegone telegone*





*Amphiselenis chama*



*Amphiselenis chama*



*Amphiselenis chama*



*Amphiselenis chama*



*Amphiselenis chama*



*Amphiselenis chama*



*Amphiselenis chama*



*Calephelis sp snsm2*



*Melanis electron*



*Melanis electron*



*Melanis electron*



*Melanis electron*



*Melanis electron*



*Mesenopsis bryaxis*



*Mesenopsis bryaxis*





*Emesis ocy pore aethalia*



*Emesis ocy pore aethalia*



*Emesis ocy pore aethalia*



*Emesis ocy pore aethalia*



*Emesis ocy pore aethalia*



*Emesis ocy pore aethalia*



*Emesis ocy pore aethalia*



*Emesis ocy pore aethalia*



*Nymphidium onaeum*



*Nymphidium onaeum*



*Nymphidium onaeum*



*Nymphidium onaeum*



*Theope virgilius*



# Lycaenidae

## Blues and Hairstreaks

### Theclinae

#### Hairstreaks



*Penaincisalia loxurina* ♂



*Penaincisalia loxurina* ♂



*Penaincisalia loxurina*



*Penaincisalia loxurina*



*Penaincisalia loxurina*



*Penaincisalia loxurina*



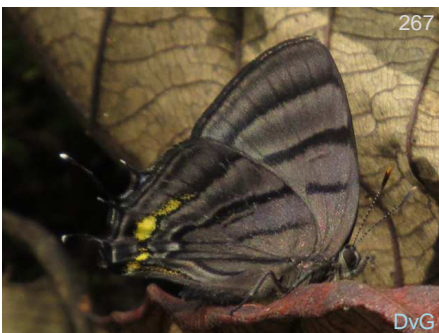
*Penaincisalia loxurina*



*Penaincisalia loxurina*



*Penaincisalia loxurina*



*Thaeides theia* ♀



*Thaeides theia*



*Arawacus dumenilii*





*Arawacus leucogyna leucogyna*



*Arawacus leucogyna leucogyna*



*Arawacus leucogyna leucogyna*



*Arawacus leucogyna leucogyna*



*Arawacus lincoides*



*Arawacus lincoides*



*Arawacus lincoides*



*Evenus coronata*



*Evenus coronata*



*Laothus oceia*



*Strephonota tephraeus*



*Strephonota tephraeus*



*Strymon mulucha*



*Strymon mulucha*



*Strymon mulucha*





*Strymon mulucha*



*Strymon mulucha*



*Strymon mulucha*



*Strymon mulucha*



*Strymon yojoa*



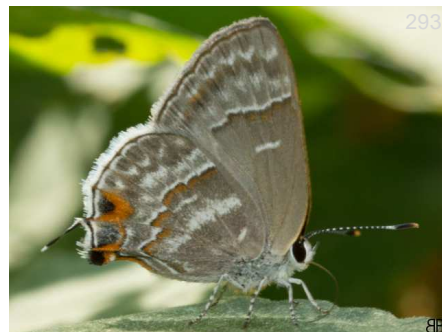
*Strymon yojoa*



*Strymon yojoa*



*Strymon yojoa*



*Strymon yojoa*

## Polyommatainae

### Blues



*Leptotes cassius*



*Leptotes cassius*



*Leptotes cassius*



*Leptotes cassius*



*Zizula cyna*



*Zizula cyna*





*Zizula cyna*



*Zizula cyna*



## Nymphalidae

### Brushfoots

#### Heliconiinae

#### Longwings



*Altinote stratonice stratonice*

♀



*Altinote stratonice stratonice*



*Altinote stratonice stratonice*



*Altinote stratonice stratonice*



*Altinote stratonice stratonice*



*Altinote stratonice stratonice*



*Dione glycera*



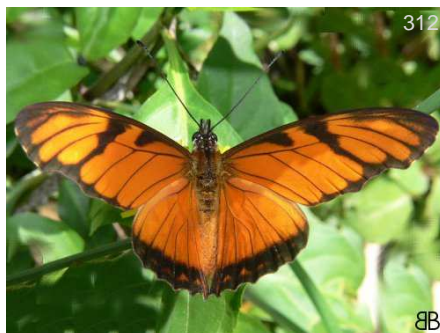
*Dione glycera*



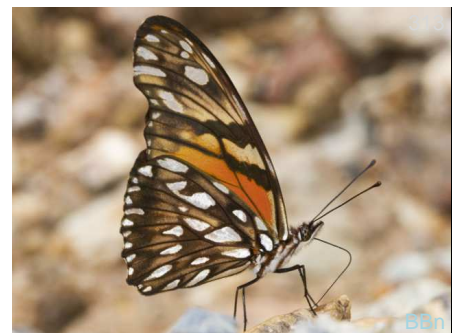
*Dione glycera*



*Dione juno juno*



*Dione juno juno*



*Dione juno juno*





*Dryas iulia iulia* ♀♂



*Dryas iulia iulia* ♀



*Dryas iulia iulia* ♀



*Dryas iulia iulia*



*Dryas iulia iulia*



*Dryas iulia iulia*



*Eueides procula kuenowii*



*Eueides procula kuenowii*



*Eueides procula kuenowii*



*Eueides procula kuenowii*



*Eueides procula kuenowii*



*Eueides procula kuenowii*



*Heliconius clysonymus clysonymus*



*Heliconius clysonymus clysonymus*



*Heliconius clysonymus clysonymus*





*Heliconius clysonymus clysonymus*



*Heliconius clysonymus clysonymus*



*Heliconius eleuchia eleuchia*



*Heliconius eleuchia eleuchia*



*Heliconius erato hydara*



*Heliconius erato hydara*



*Heliconius ethilla*



*Heliconius ethilla*



*Heliconius ethilla*



*Heliconius ethilla*



*Heliconius ethilla*



*Heliconius melpomene melpomene*



*Heliconius melpomene melpomene*



*Heliconius melpomene melpomene*



*Heliconius melpomene melpomene*





*Heliconius melpomene melpomene*

Nymphalinae

Brushfoots



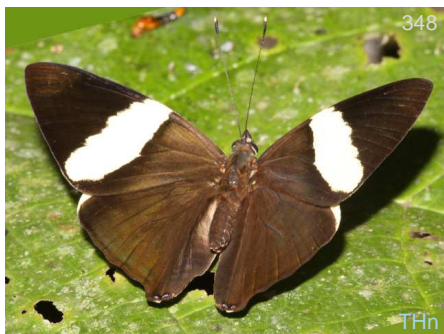
*Historis odius*



*Historis odius*



*Historis odius*



*Colobura dirce dirce*



*Colobura dirce dirce*



*Colobura dirce dirce*



*Hypanartia dione dione*



*Hypanartia dione dione*



*Hypanartia dione dione*



*Hypanartia dione dione*



*Hypanartia dione dione*



*Hypanartia kefersteini*





*Hypanartia kefersteini*



*Hypanartia kefersteini*



*Hypanartia kefersteini*



*Hypanartia kefersteini*



*Hypanartia lethe lethe*



*Hypanartia lethe lethe*



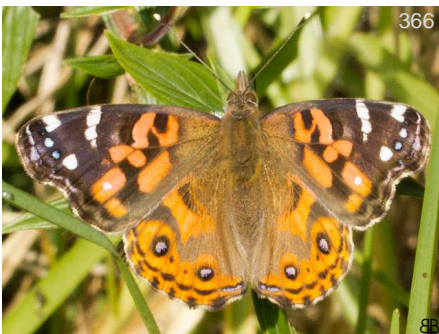
*Hypanartia lethe lethe*



*Vanessa braziliensis*



*Vanessa braziliensis*



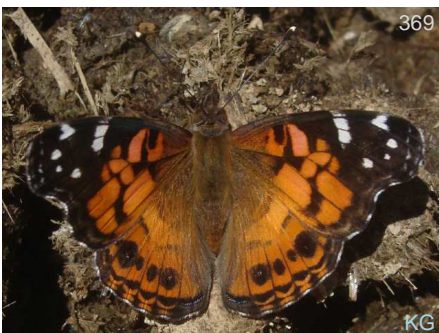
*Vanessa braziliensis*



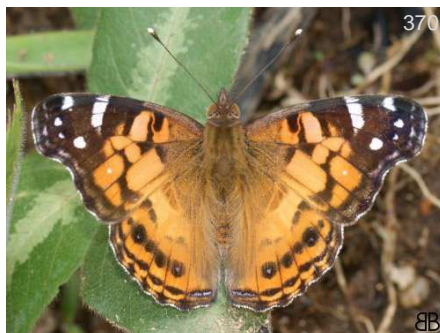
*Vanessa braziliensis*



*Vanessa virginiensis*



*Vanessa virginiensis*



*Vanessa virginiensis*



*Vanessa virginiensis*





*Vanessa virginiensis*



*Siproeta epaphus epaphus*



*Siproeta epaphus epaphus*



*Siproeta stelenes stelenes*



*Siproeta stelenes stelenes*



*Anthanassa acesas* ♂



*Anthanassa acesas* ♂



*Anthanassa acesas* ♀



*Anthanassa acesas*



*Anthanassa acesas*



*Anthanassa drusilla drusilla* ♂



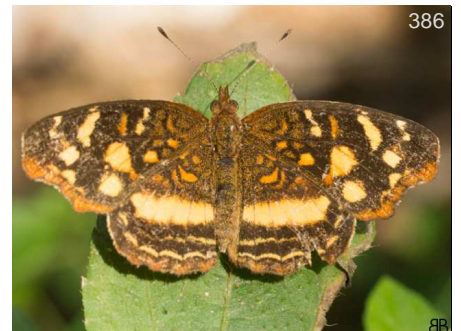
*Anthanassa drusilla drusilla* ♂



*Anthanassa drusilla drusilla* ♂



*Anthanassa drusilla drusilla* ♀



*Anthanassa drusilla drusilla* ♀





*Anthanassa drusilla drusilla*



*Janatella leucodesma*



*Janatella leucodesma*



*Janatella leucodesma*



*Janatella leucodesma*



*Microtia elva elva*



*Microtia elva elva*



*Microtia elva elva*



*Microtia elva elva*



*Telenassa delphia catenaria*



*Telenassa delphia catenaria*

## Limnitiidae

### Sisters

Mainly africana y asiatica some Namerica



*Adelpha boeotia boeotia*



*Adelpha boeotia boeotia*



*Adelpha boeotia boeotia*





*Adelpha boeotia boeotia*



*Adelpha corcyra salazari*



*Adelpha corcyra salazari*



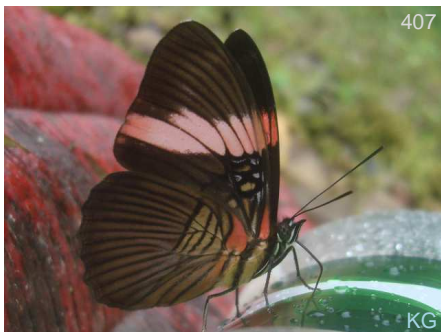
*Adelpha lycorias lara*



*Adelpha lycorias lara*



*Adelpha lycorias lara*



*Adelpha lycorias lara*



*Adelpha zina inachia*



*Adelpha zina inachia*



*Adelpha zina inachia*

## Charaxinae

### Leafwings

Larger butterflies, strong fliers, they usually sit with wings closed, then flash their wings open showing brilliant blue, purple or orange above. They look like dried leaves when wings are closed. They do not come to flowers, but like excrement, urine an





*Fountainea glycerium glycerium*



*Fountainea glycerium glycerium*



*Fountainea glycerium glycerium*



*Fountainea glycerium glycerium*



*Fountainea glycerium glycerium*



*Fountainea glycerium glycerium*



*Fountainea glycerium glycerium*



*Fountainea nessus*



*Fountainea nessus*



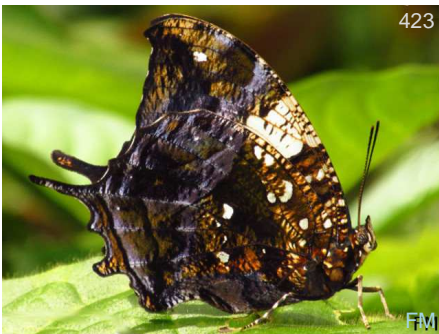
*Fountainea nessus*



*Fountainea nessus*



*Fountainea nessus*



*Hypna clytemnestra clytemnestra*



*Memphis philumena chaeronea*



*Memphis philumena chaeronea*





*Memphis philumena chaeronea*



*Noreppa chromus chromus* ♂



*Noreppa chromus chromus*



*Noreppa chromus chromus*



*Noreppa chromus chromus*

Apaturinae

Emperors

Only a few widespread species, usually bright blue triangle above, silver or brownish below. They like wet dirt and are strong fliers.



*Doxocopa cyane mexicana* ♂



*Doxocopa cyane mexicana* ♂



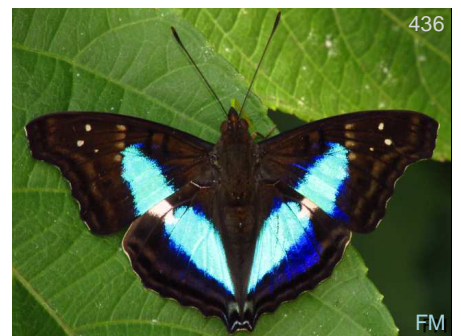
*Doxocopa cyane mexicana* ♂



*Doxocopa cyane mexicana* ♀



*Doxocopa laurentia cherubina*



*Doxocopa laurentia cherubina*





*Doxocopa laurentia cherubina*



*Doxocopa laurentia cherubina*



*Doxocopa laurentia cherubina*

Satyrinae

Satyrans, Morphos, and Owls



*Morpho helenor peleides*



*Morpho helenor peleides*



*Morpho helenor peleides*



*Caligo brasiliensis morpheus*



*Caligo telamonius menus*



*Caligo telamonius menus*



*Caligo telamonius menus*



*Arhuaco ica*



*Cissia pompilia*

♀♂



*Cissia pompilia*



*Cissia pompilia*



*Cissia pompilia*

♀♂





*Cissia pompilia*



*Cissia pompilia*



*Corades chelonis chelonis*



*Corades chelonis chelonis*



*Corades chelonis chelonis*



*Corades chelonis chelonis*



*Corades chelonis chelonis*



*Corades cybele cybele*



*Corades cybele cybele*



*Corades cybele cybele*



*Corades cybele cybele*



*Corades enyo almo*



*Corades enyo almo*



*Corades enyo almo*



*Corades enyo almo*





*Corades enyo almo*



*Corades enyo almo*



*Corades enyo almo*



*Corades enyo almo*



*Corades medeba columbina*



*Corades medeba columbina*



*Corades medeba columbina*



*Corades medeba columbina*



*Corades medeba columbina*



*Corades medeba columbina*



*Corades medeba columbina*



*Corades medeba columbina*



*Euptychia westwoodi*



*Euptychia westwoodi*



*Euptychia westwoodi*





482

*Euptychia westwoodi*



483

*Euptychoides saturnus*



484

*Euptychoides saturnus*



485

*Euptychoides saturnus*



486

*Euptychoides saturnus*



487

*Hermeuptychia harmonia*



488

*Hermeuptychia harmonia*



489

*Hermeuptychia harmonia*



490

*Hermeuptychia harmonia*



491

*Hermeuptychia hermes*

♀♂



492

*Hermeuptychia hermes*



493

*Hermeuptychia hermes*



494

*Hermeuptychia hermes*



495

*Hermeuptychia hermes*



496

*Hermeuptychia hermes*





*Hermeuptychia hermes*



*Hermeuptychia hermes*



*Hermeuptychia hermes*



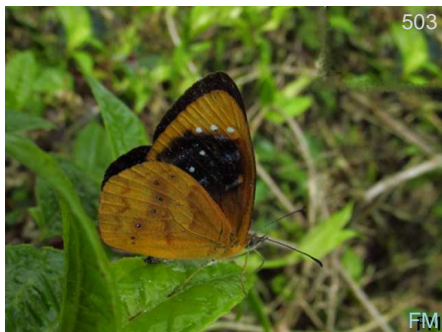
*Lasiophila semipartia*



*Lasiophila semipartia*



*Lymanopoda caeruleata*



*Lymanopoda caeruleata*



*Lymanopoda nevada nevada*



*Manerebia nevadensis*



*Manerebia nevadensis*



*Oxeoschistus puerta simplex*



*Oxeoschistus puerta simplex*



*Oxeoschistus puerta simplex*



*Oxeoschistus puerta simplex*



*Pareuptychia metaleuca metaleuca*





*Pareuptychia metaleuca metaleuca*



*Pareuptychia metaleuca metaleuca*



*Pareuptychia metaleuca metaleuca*



*Pareuptychia metaleuca metaleuca*



*Pareuptychia metaleuca metaleuca*



*Pareuptychia ocirrhoe*



*Pareuptychia ocirrhoe*



*Pareuptychia ocirrhoe*



*Pareuptychia ocirrhoe*



*Pareuptychia ocirrhoe*



*Pareuptychia ocirrhoe*



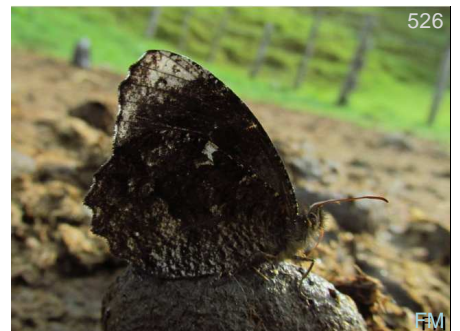
*Pareuptychia ocirrhoe*



*Pedaliodes cebolleta*



*Pedaliodes leucocheilus*



*Pedaliodes leucocheilus*





*Pedaliodes manis*



*Pedaliodes manis*



*Pedaliodes phazania*



*Pedaliodes phazania*



*Pedaliodes symmachus*



*Pedaliodes symmachus*



*Pedaliodes symmachus*



*Pedaliodes tyrreus tyrreus*



*Pronophila juliani*



*Pronophila unifasciata donachui*



*Pronophila unifasciata donachui*



*Sierrasteroma polixo*



*Steroma bega bega*



*Steroma bega bega*



*Steroma bega bega*





*Steroma bega bega*



*Steroma polyxo*



*Steroma polyxo*



*Ypthimoides renata*



*Ypthimoides renata*



*Ypthimoides renata*



*Ypthimoides renata*

## Danainae

### Monarchs & Clearwings

Tribe Danaini/Monarchs – orange/rust colored butterflies, fairly good sized, famous North American migrants.

Tribe Ithomiini/Clearwings & Tigerwings – crystal or transparent winged, or orange and black striped. They usually fly in shaded areas, very slow!



*Danaus plexippus megalippe*

♂



*Danaus plexippus megalippe*



*Danaus plexippus megalippe*





*Danaus plexippus megalippe*



*Danaus plexippus megalippe*



*Danaus plexippus megalippe*



*Lycorea halia atergatis*

♂



*Lycorea halia atergatis*

♂



*Lycorea halia atergatis*



*Lycorea halia atergatis*



*Lycorea halia atergatis*



*Lycorea halia atergatis*



*Greta andromica andromica*



*Greta andromica andromica*



*Greta andromica andromica*



*Greta andromica andromica*



*Hypoleria ocalea ocalea*



*Hypoleria ocalea ocalea*





*Hypoleria ocalea ocalea*



*Hypoleria ocalea ocalea*



*Hypoleria ocalea ocalea*



*Hypoleria ocalea ocalea*



*Hypoleria ocalea ocalea*



*Hypoleria ocalea ocalea*



*Hypoleria ocalea ocalea*



*Hypoleria ocalea ocalea*



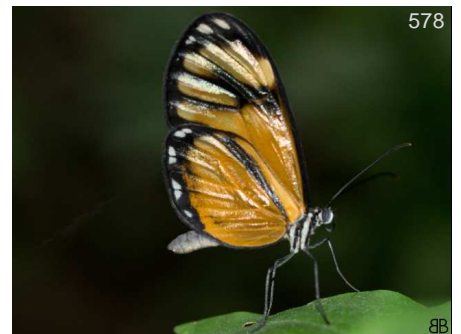
*Hypoleria ocalea ocalea*



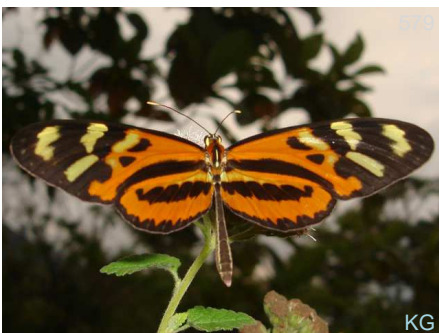
*Hypoleria ocalea ocalea*



*Hypoleria ocalea ocalea*



*Hypoleria ocalea ocalea*



*Mechanitis polymnia veritabilis*



*Mechanitis polymnia veritabilis*



*Mechanitis polymnia veritabilis*





582

KG

*Mechanitis polymnia veritabilis*



8B

*Oleria amalda amalda*



584

KG

*Oleria amalda amalda*



585

8B

*Oleria amalda amalda*



586

8B

*Oleria amalda amalda*



587

SK

*Oleria makrena caucana*



588

JAB

*Oleria makrena caucana*



589

8B

*Oleria makrena caucana*

## Cyrestinae

### Daggerwings

Larger butterflies with long, pointed tails, like daggers in English. Often sit on wet dirt with wings open. Many are all brown or all orange with thin vertical stripes.



590

8B

*Marpesia berania berania*



591

8B

*Marpesia berania berania*



592

8B

*Marpesia berania berania*





*Marpesia corinna* ♂



*Marpesia corinna* ♂



*Marpesia corinna* ♀



*Marpesia corinna* ♀



*Marpesia corinna* ♀



*Marpesia marcella marcella* ♂



*Marpesia marcella marcella* ♂



*Marpesia marcella marcella* ♂



*Marpesia marcella marcella*



*Marpesia petreus petreus*



*Marpesia petreus petreus*



*Marpesia petreus petreus*



*Marpesia petreus petreus*



*Marpesia zerynthia zerynthia*



*Marpesia zerynthia zerynthia*





*Marpesia zerynthia zerynthia*

**Biblidinae**

**Tropical Brushfoots**

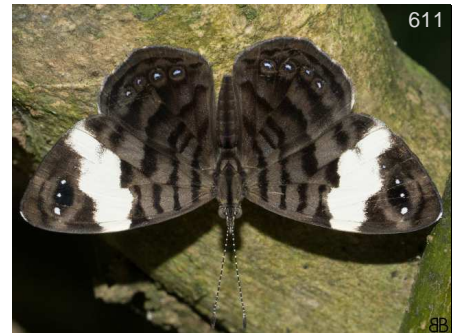
Medium sized butterflies, varied colors, many are widespread. Includes 88's.



*Haematera [Callidula] pyrame thysbe*



*Haematera [Callidula] pyrame thysbe*



*Ectima thecla thecla*



*Ectima thecla thecla*



*Hamadryas amphinome fumosa* ♂



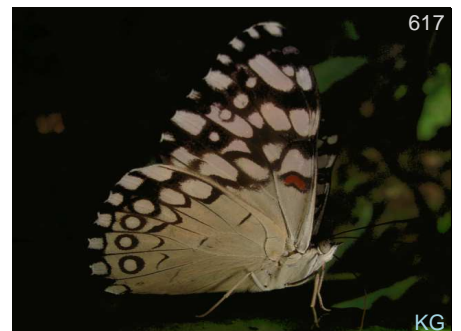
*Hamadryas amphinome fumosa* ♂



*Hamadryas amphinome fumosa*



*Hamadryas feronia feronia*



*Hamadryas feronia feronia*





Catonephele chromis chromis ♂



Catonephele chromis chromis ♂



Catonephele chromis chromis ♀



Catonephele chromis chromis ♀



Epiphile iblis iblis ♂



Epiphile iblis iblis ♂



Epiphile iblis iblis ♂



Epiphile iblis iblis ♂



Epiphile iblis iblis ♂



Dynamine postverta mexicana ♂



Dynamine postverta mexicana ♀



Dynamine postverta mexicana ♂



Dynamine racidula racidula ♂



Dynamine racidula racidula ♂



Diaethria clymena marchalii





*Diaethria clymena marchalii*



*Diaethria clymena marchalii*



*Diaethria clymena marchalii*



*Diaethria clymena marchalii*



*Diaethria clymena marchalii*



*Diaethria clymena marchalii*



*Diaethria clymena marchalii*



*Diaethria clymena marchalii*



*Diaethria gabaza gabaza*



*Diaethria gabaza gabaza*



*Diaethria gabaza gabaza*



*Diaethria gabaza gabaza*



*Diaethria gabaza gabaza*



*Diaethria gabaza gabaza*



*Diaethria gabaza gabaza*





*Diaethria gabaza gabaza*



*Diaethria gabaza gabaza*



*Diaethria gabaza gabaza*



*Perisama gisco*



*Perisama nevada*



*Perisama nevada*



*Perisama opelli mairae*



*Perisama opelli mairae*



**Legends**

Endemic **e**

Photo number



Altitude 1, 2

BB

Photographer

*Ehipile epimenes kalbreyeri*

♂

Genus, species, subspecies

Sex

**Altitude (sub localities):**

650m to 1400m, Minca and Pozo Azul to turn off to Central

1400m to 1700m, Central to Palo Alto

1700m to 2250m, Palo Alto to San Lorenzo Station, includes El Dorado at 1950m

**How to get to this location:**

**Como llegar a esta localidad:**

This list is the result of the accumulative efforts from a large number of people. The following are the photographers who have contributed their photos to this work, thank you very much.

**Photographers - Fotógrafos**

AH	Adrian Hoskins	AN	Andrew Neild	BB	Juan Guillermo Jaramillo Vela
BBk	Bob Behrstock	BBn	Bill Bouton	BBt	Bill Berthet
CCvl	Charles Covell	DvG	David Geale	DW	Dan Wade
FM	Fredy Montero	GBt	Gustavo Bautista	GC	Gill Carter
GM	Glenn Mahler	JAB	Johnnier Arango Bermudez	JMD	John MacDonald
Jpe	Jorge Perez	JSn	Jim Snyder	KG	Kim Garwood
KK	Ken Kertell	KP	Kevin Painter	KW	Kay Wade
KWs	Kristine Wallstrom	KZ	Kristof Zyskowski	LEM	Luis Eduardo Mejia
Leo	Leopoldina Tapasco	LG	Leif Gabrielsen	LS	Linda Scott
MC	Mike Chapman	MM	Martin Moreno	MS	Mike Stangeland
PB	Priscilla Brodtkin	RD	Rudy Doderer	RRt	Roger Rittmaster
SN	Sherry Nelson	SS	Shirley Sekarajasingham	TH	Tony Hoare
THn	Tom Horton	WC	Will Carter		

If you want to collaborate with photos or identification of species please contact:  
 Kim Garwood at [kimgrwd@sbcglobal.net](mailto:kimgrwd@sbcglobal.net) or [www.neotropicalbutterflies.com](http://www.neotropicalbutterflies.com)  
 Juan Guillermo Jaramillo at [arcas1956@gmail.com](mailto:arcas1956@gmail.com). or [Butterflyphotography-bb.blogspot.com](http://Butterflyphotography-bb.blogspot.com).



On the scientific names with an X or sp, we are unsure of the ID. If you can help with additional id's or corrections, please let us know.

Most of the photos were taken of live butterflies in their natural habitat. Specimen photos are used to show some characteristics that are not possible to photograph in nature.

The taxonomy and sequence of this list is based on [www.butterfliesofamerica.com](http://www.butterfliesofamerica.com) and the Atlas of Neotropical Lepidoptera, Checklist: Part 4A by Gerado Lamas, 2004.

We thank the following experts who have graciously helped with identifications on some of our photos: Stephane Attal, Andrew Brower, Bernard Hermier, James Mallet, Andrew Neild, Gregory Nielsen, Tomasz Pyrcz, Julian Salazar, Aaron Soh and Keith Willmott. All errors on identifications are the responsibility of Kim Garwood or Juan Guillermo Jaramillo.

Este listado es el resultado del esfuerzo acumulativo de un gran numero de colaboradores y fotografos a quienes damos las gracias.

Nombres cientificos con X o sp, tienen identificacion desconocida o con duda, por favor si Usted puede ayudar a completar o corregir escribanos a los contactos.

La mayoría de fotos fueron tomadas a mariposas vivas en su ambiente natural. Las fotos de especimenes son usadas para mostrar algunas características que no son posibles fotografiar en la naturaleza.

La taxonomia y la secuencia de esta lista esta basada en [www.butterfliesofamerica.com](http://www.butterfliesofamerica.com) y en el Atlas of Neotropical lepidoptera, listado de chequeo parte 4A por Gerardo Lamas, 2004.

Agradecemos a los siguientes expertos que generosamente han ayudado en la identificación de algunas de nuestras fotos: Stephane Attal, Andrew Brower, Bernard Hermier, James Mallet, Andrew Neild, Gregory Nielsen, Tomasz Pyrcz, Julian Salazar, Aaron Soh and Keith Willmott. Todos los errores en identificación son responsabilidad de Kim Garwood o Juan Guillermo Jaramillo.

**Numero de especies en esta localidad** 178  
**Number of species in this location**



**Numero de especies en la base de datos 3.701 y con subespecies 4.792, numero de fotos 6.221, especies y subespecies con foto 2.293, con la colaboracion de 97 fotografos.**

**Number of species in database 3.701 and with subespecies 4.792, number of photos 6.221, species ans subespecies with photo 2.293, with the colaboracion of 97 photographers.**