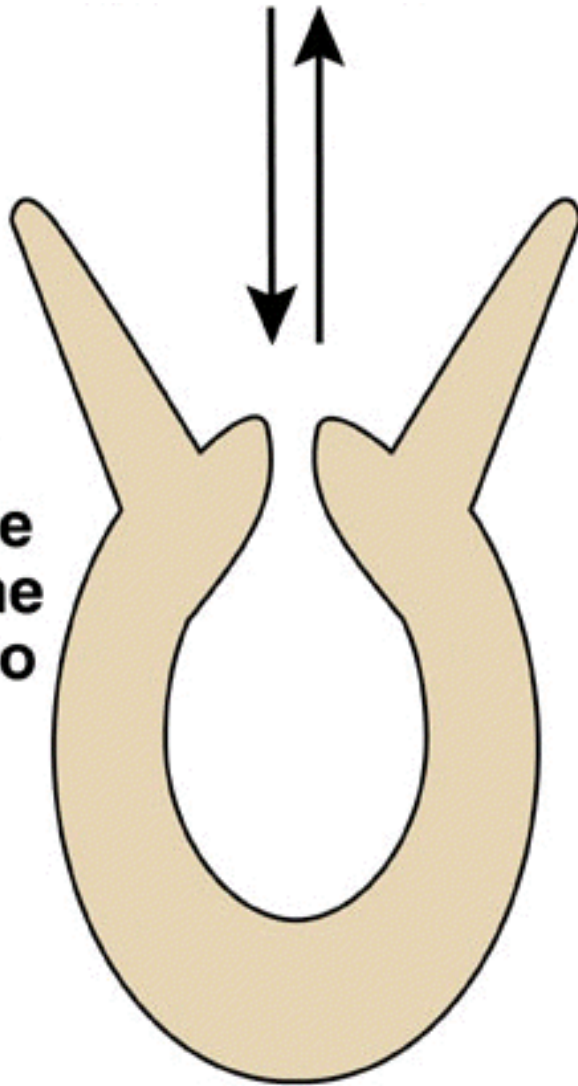
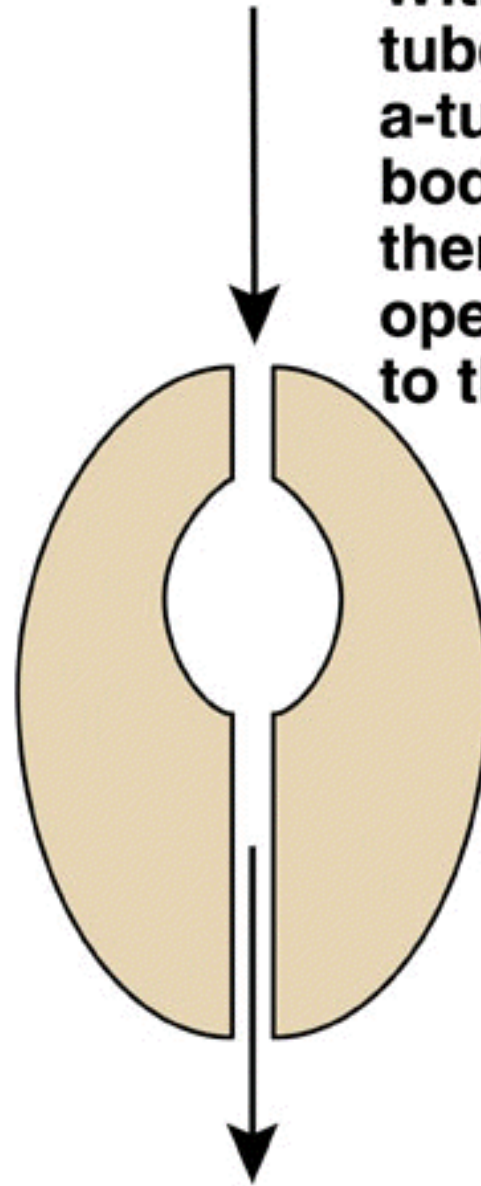


**c. Coelomate molluscs annelids arthropods
echinoderms chordates**

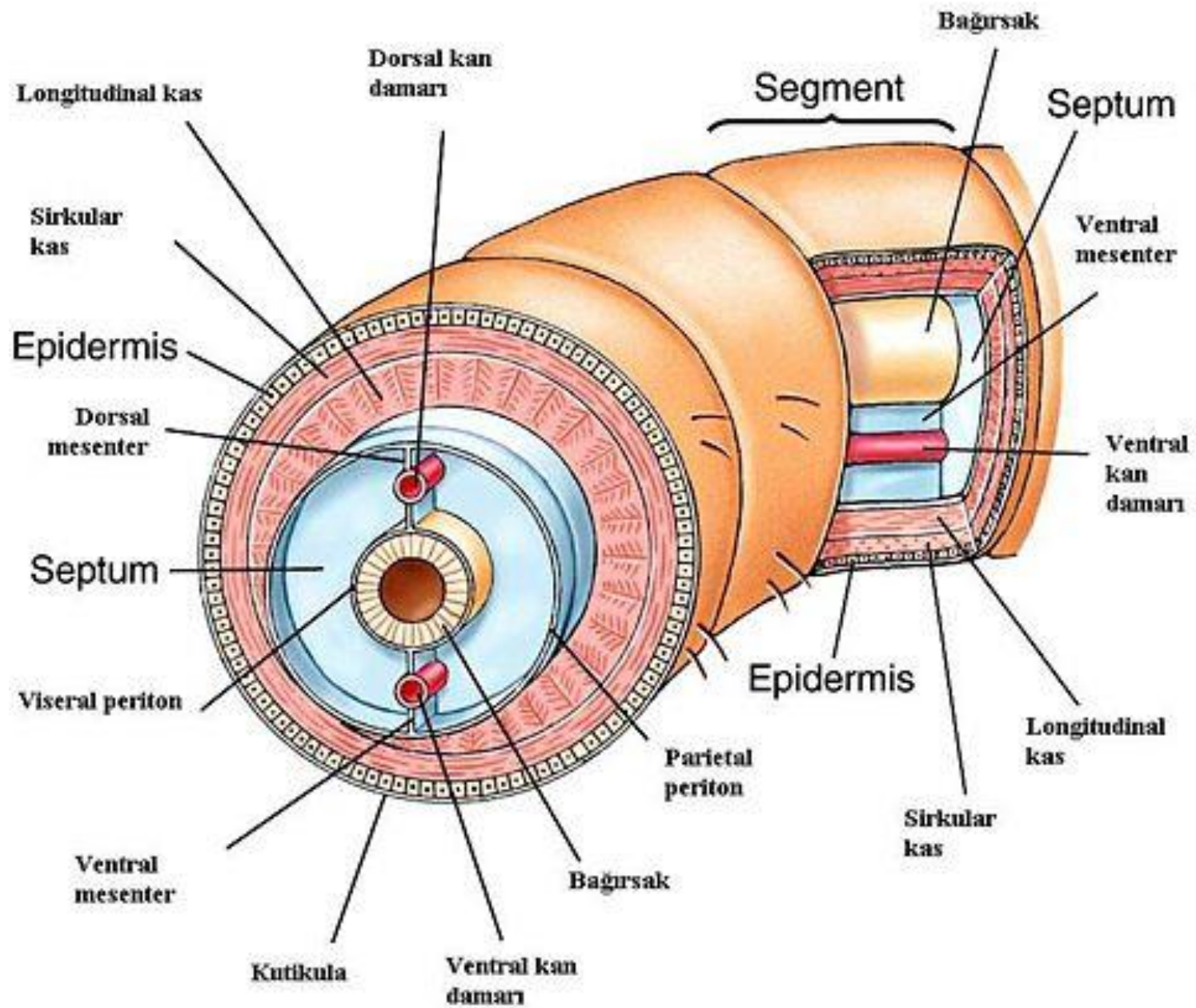
**With the
sac body
plan, there
is only one
opening to
the gut.**

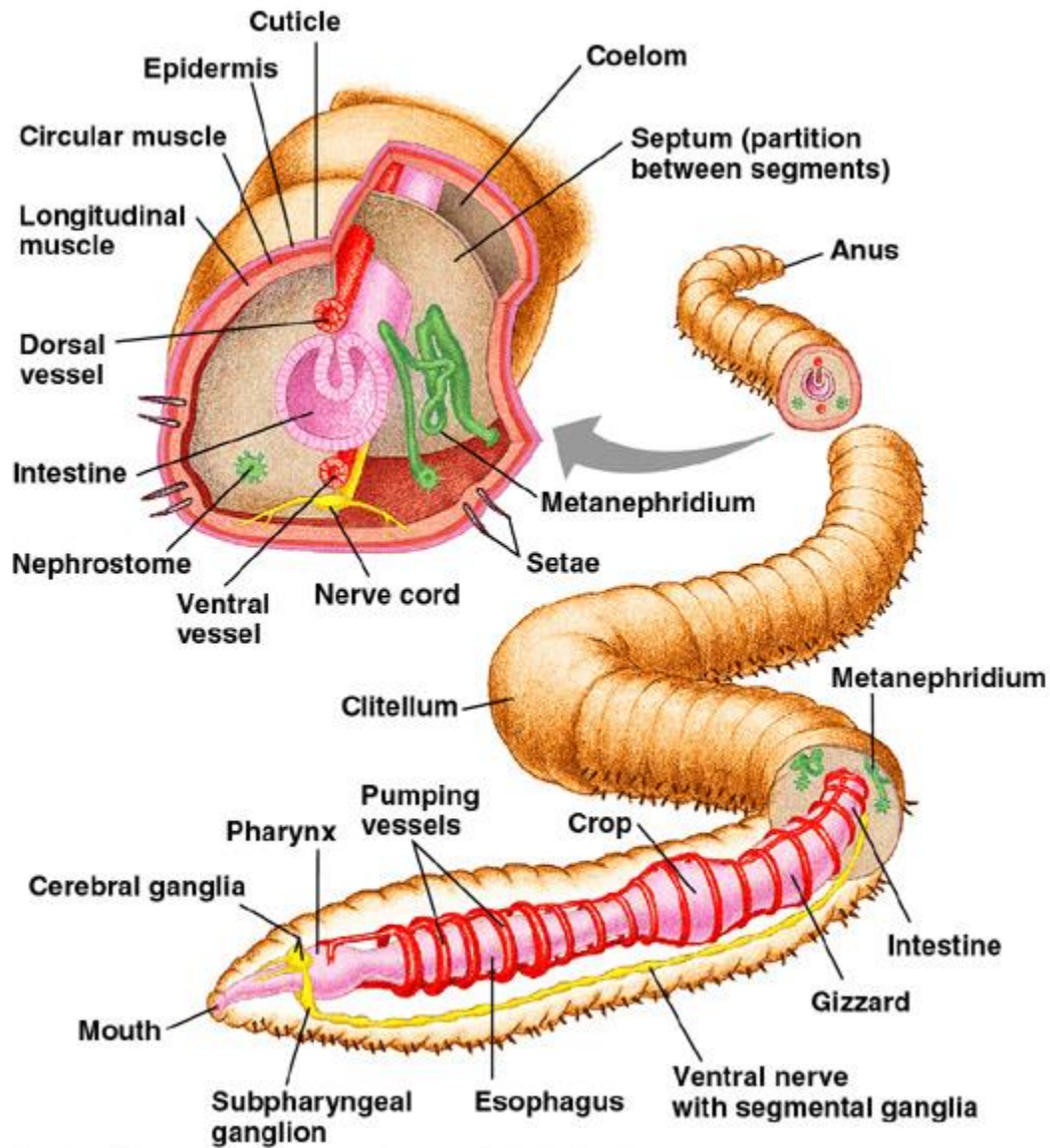


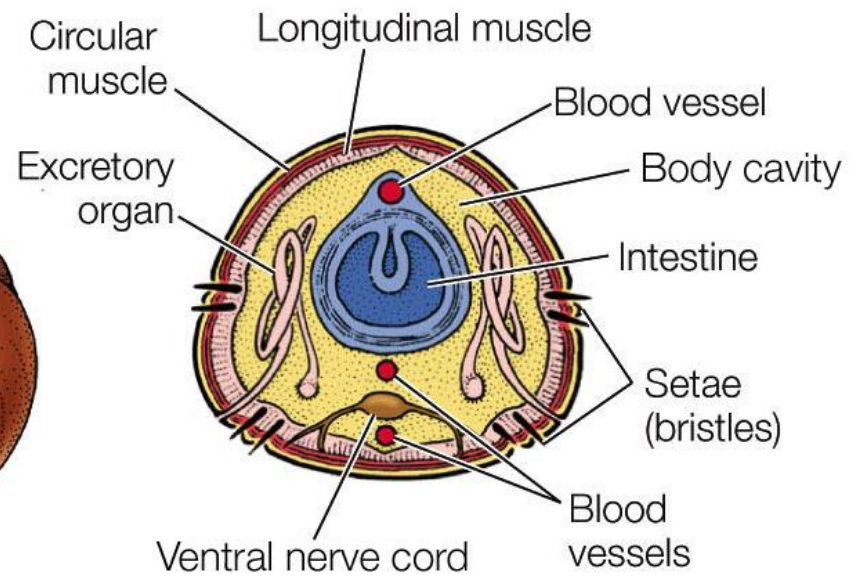
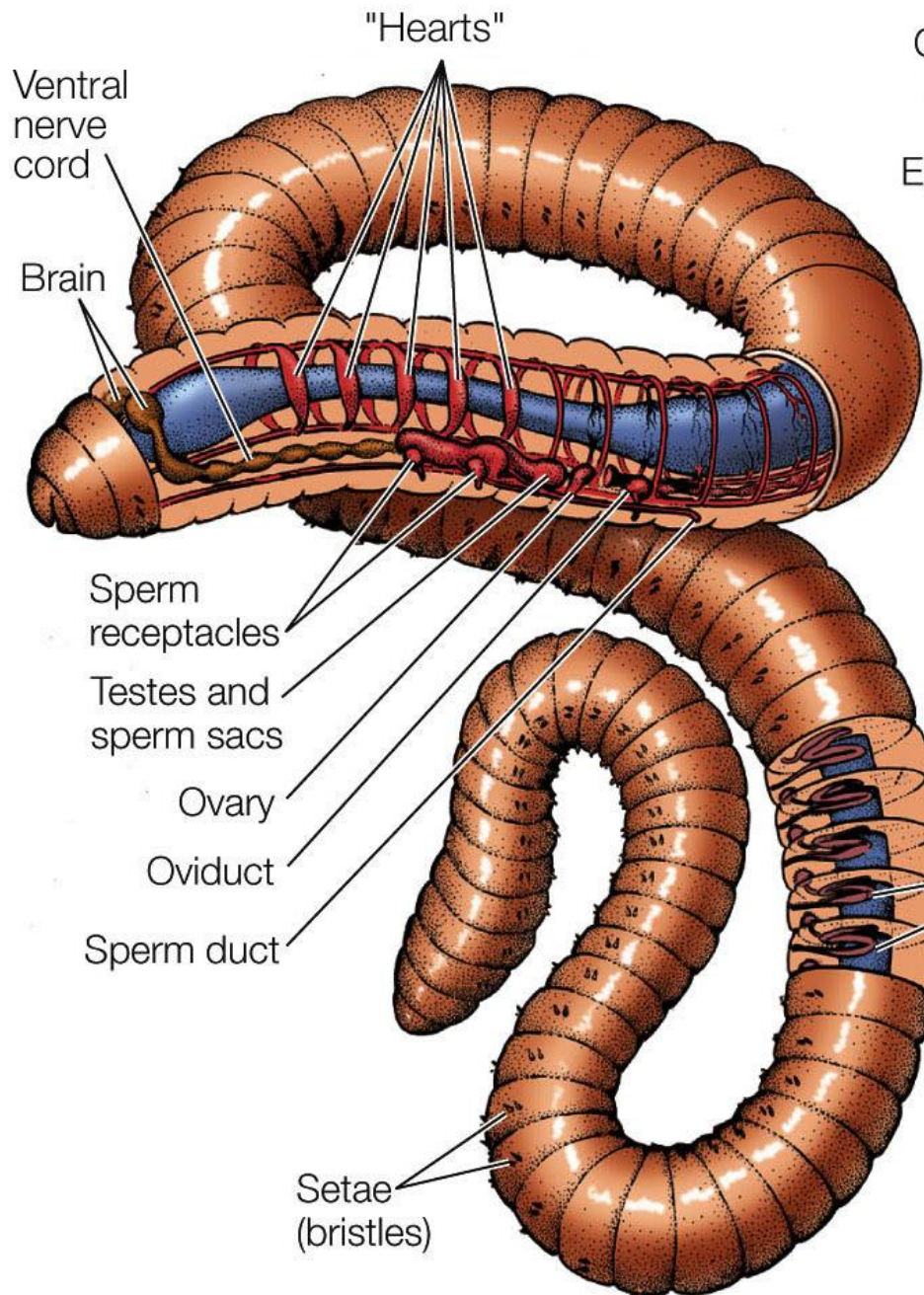
**With the
tube-within-
a-tube
body plan,
there are two
openings
to the gut.**



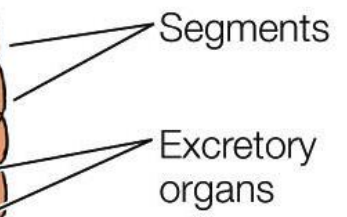


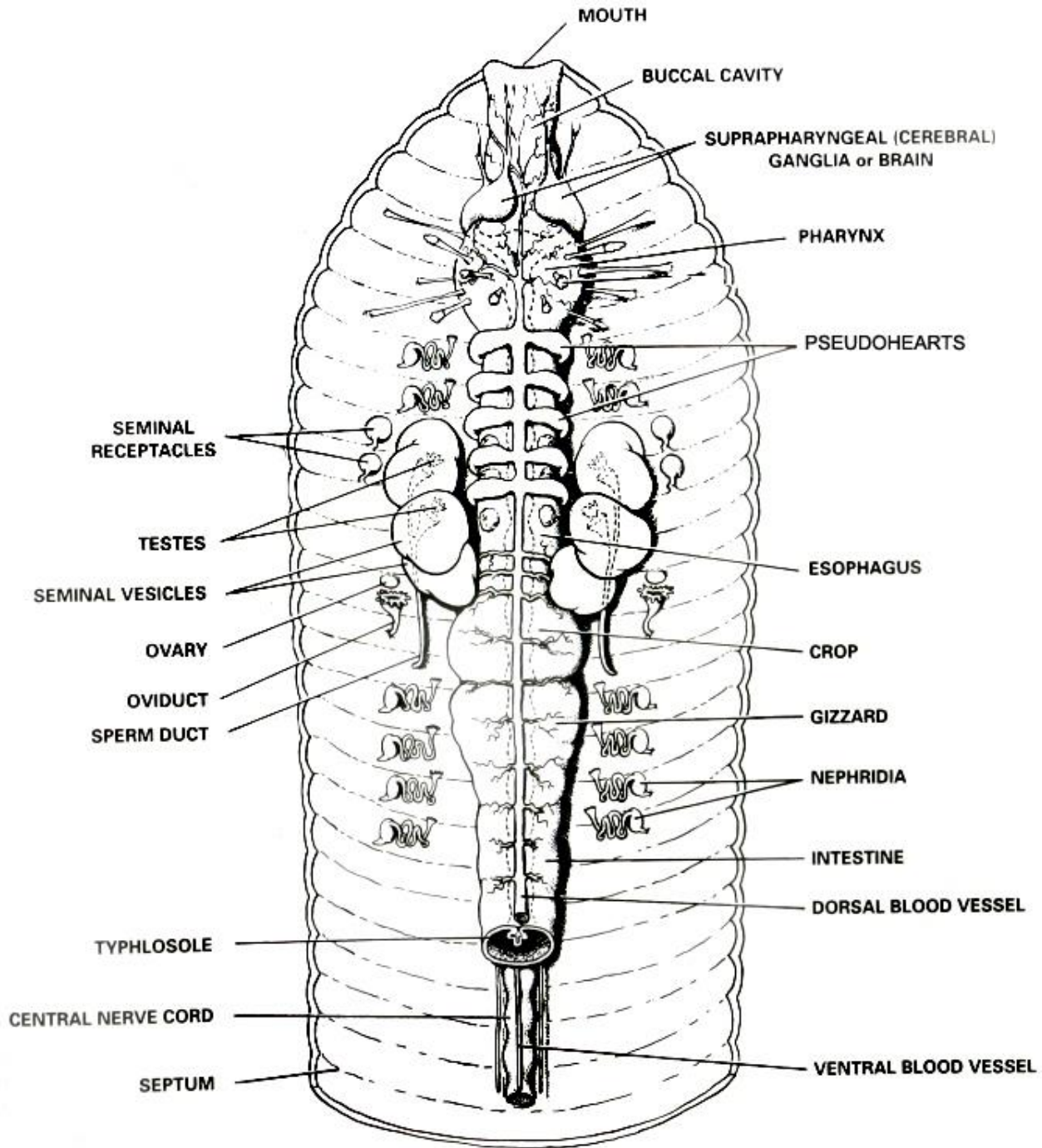


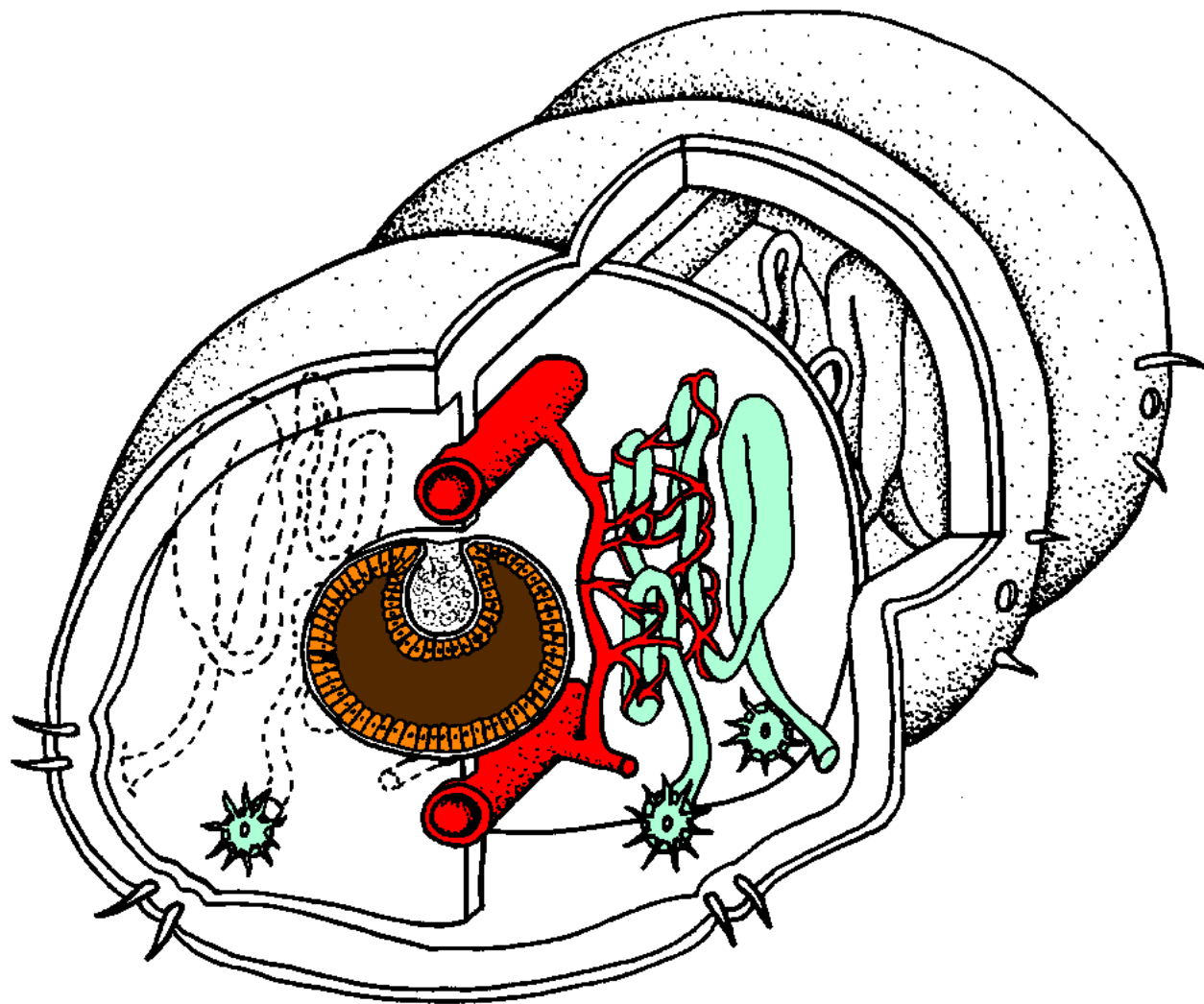




Cross section







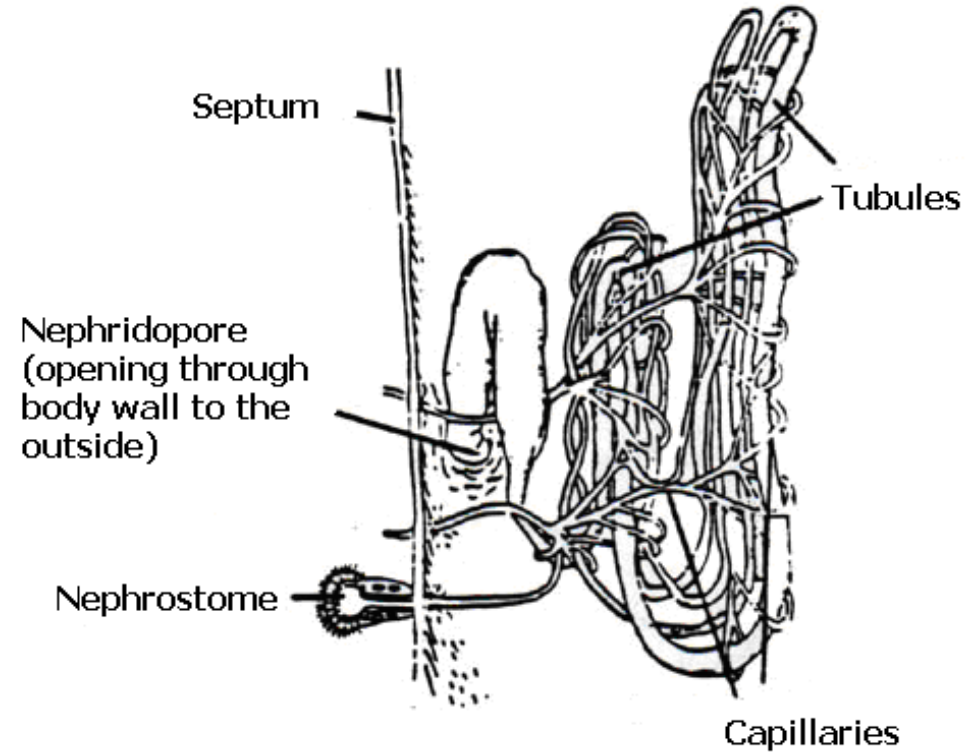
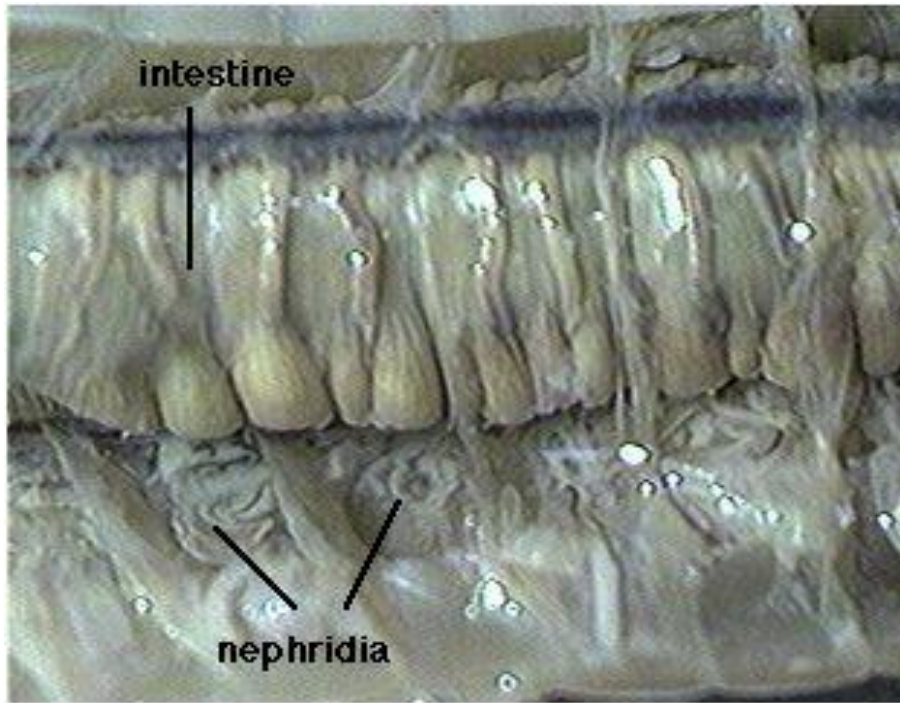
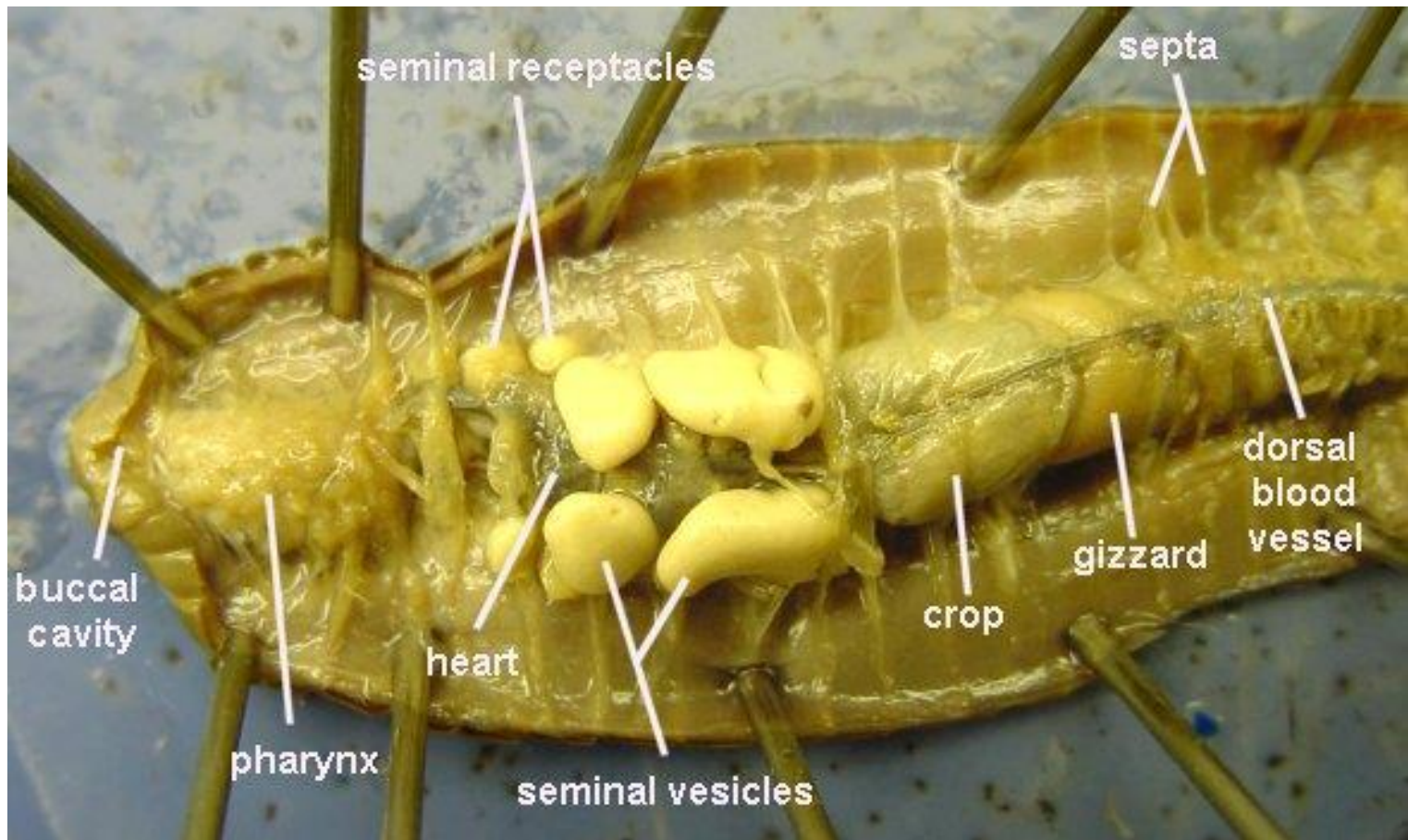


Figure 3: Diagram of One Nephridium of Lumbricus terrestris



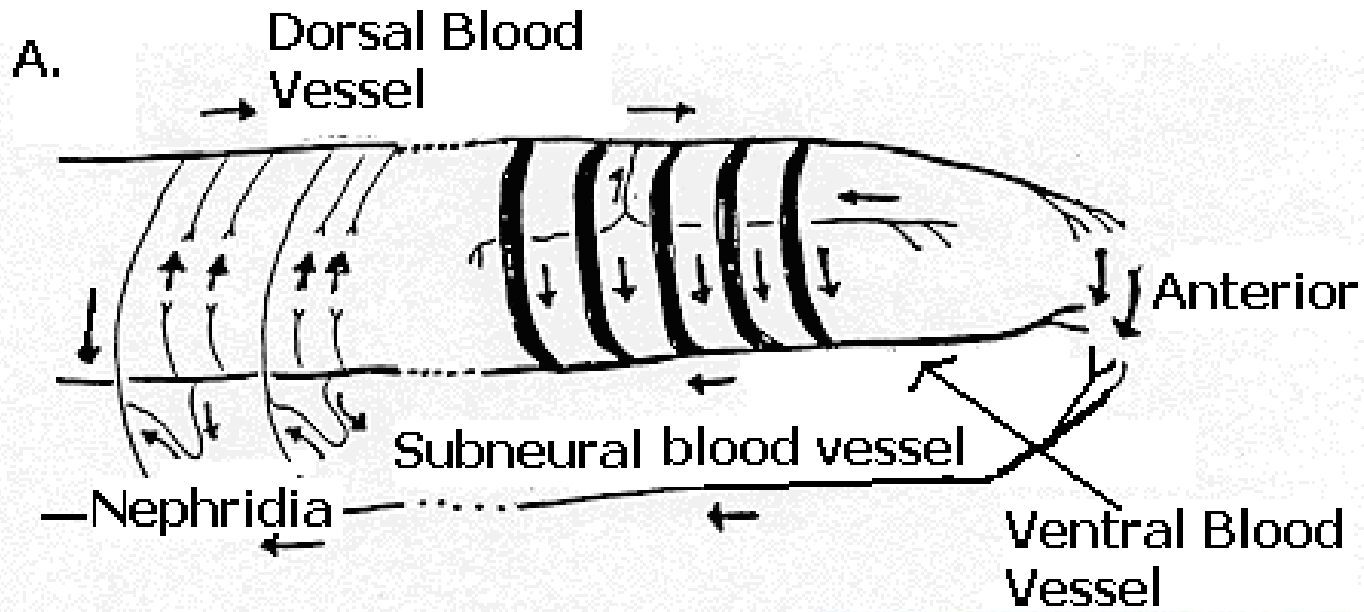
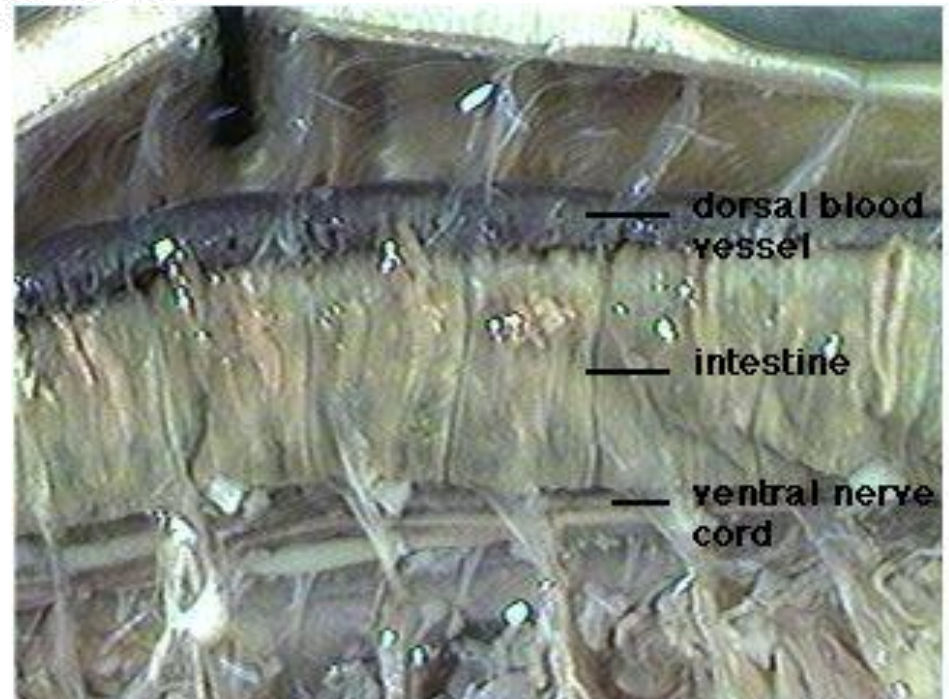


Figure 4: Diagrams of circulation in the earthworm



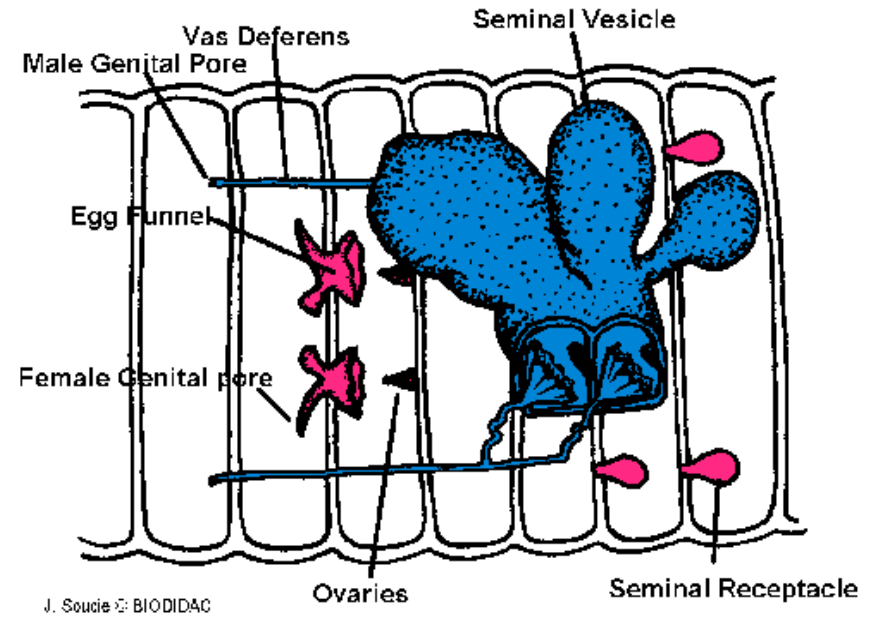
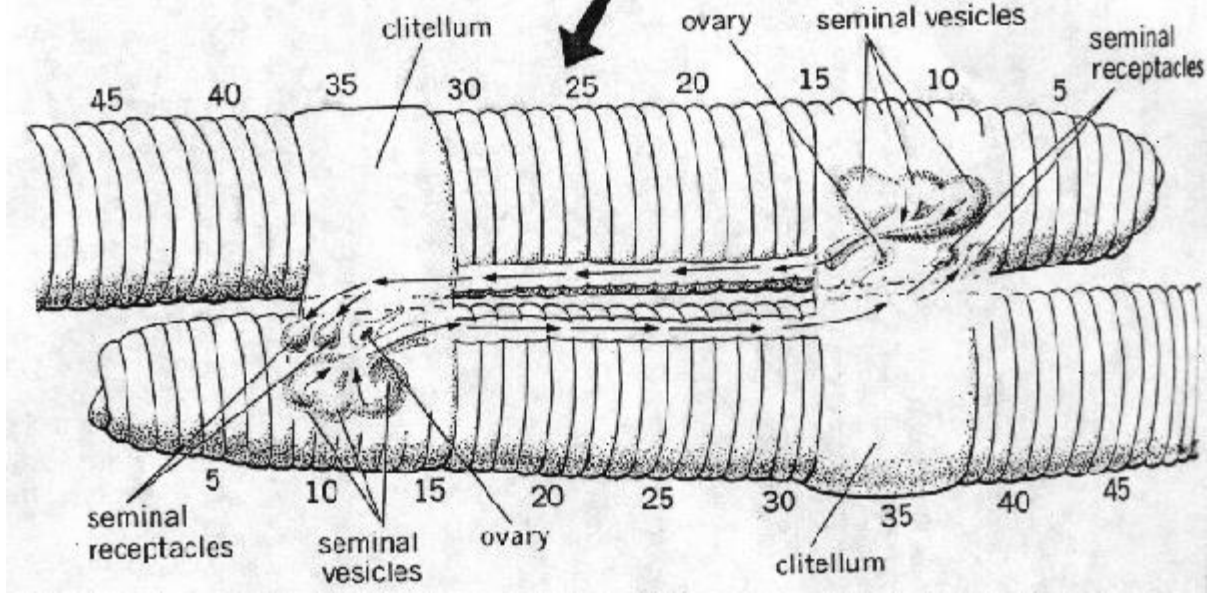
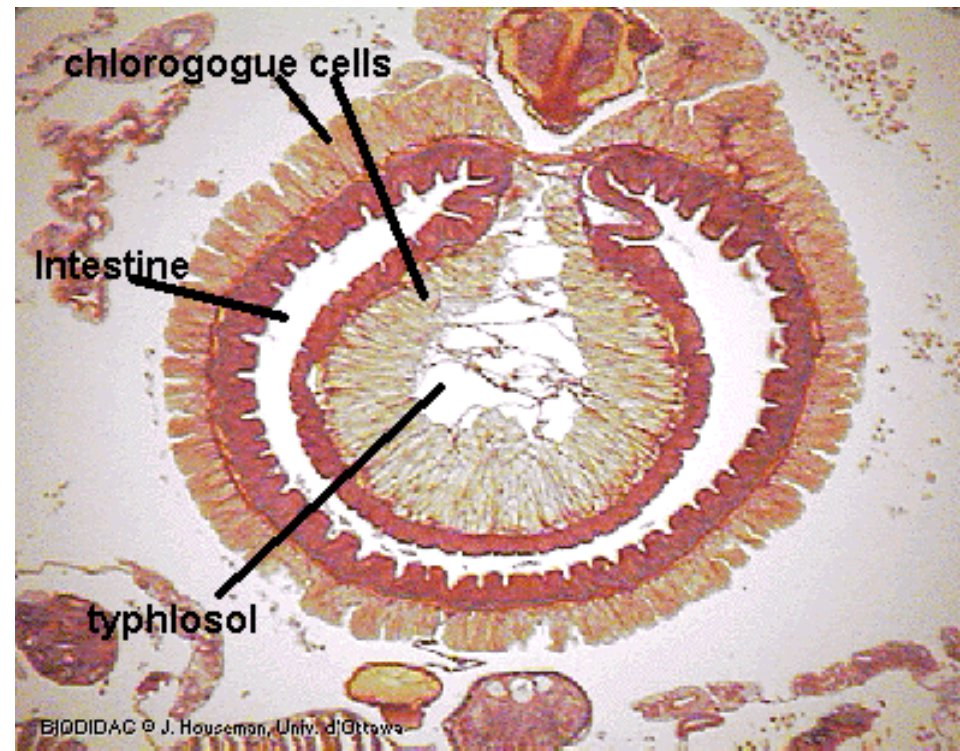
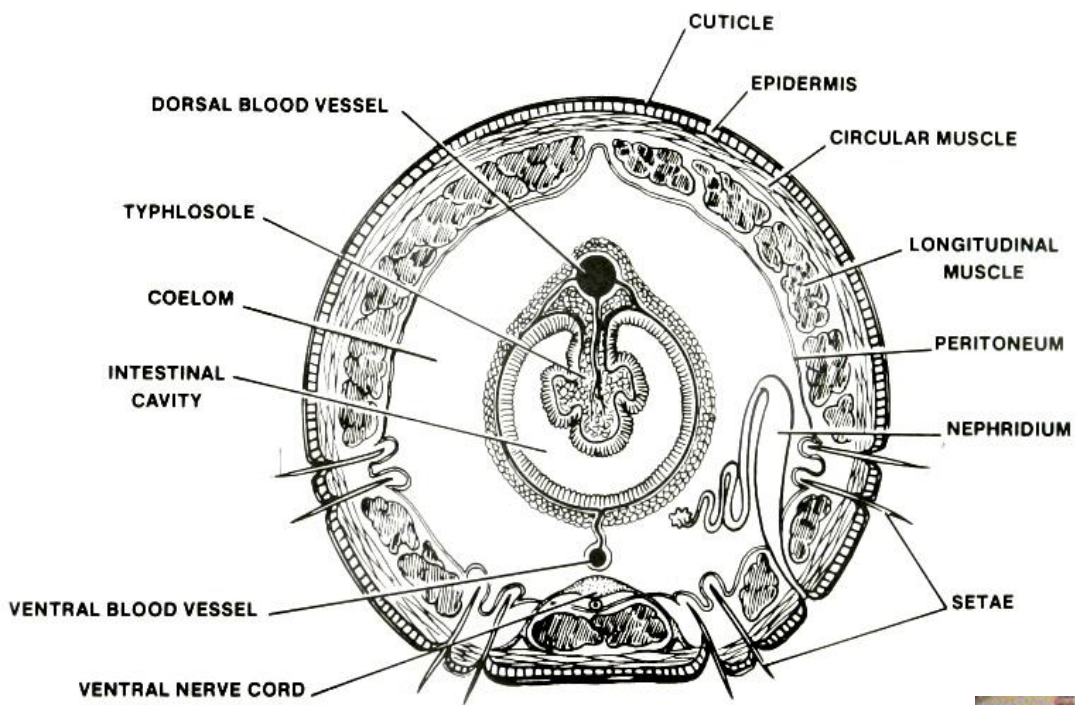
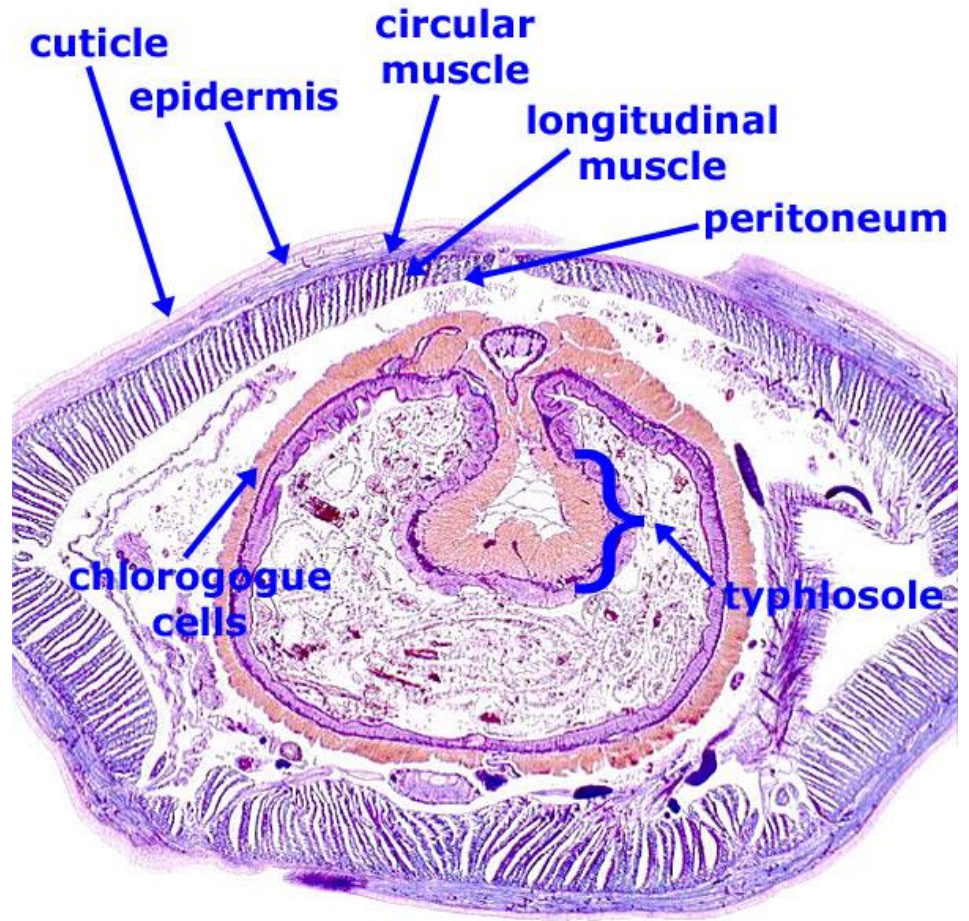
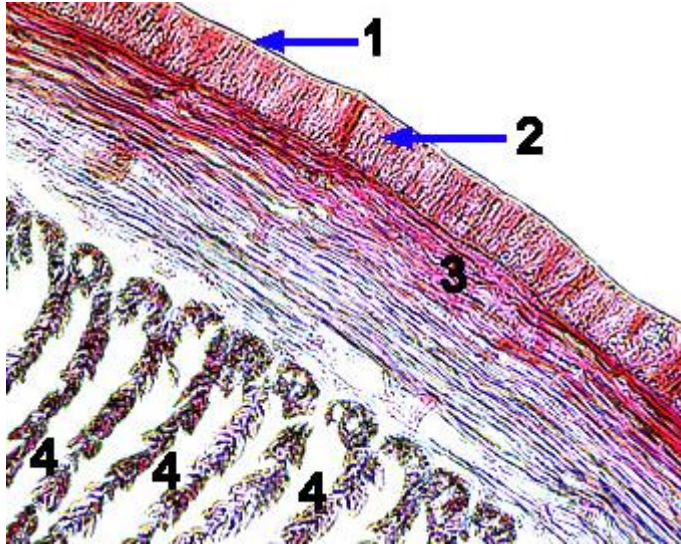


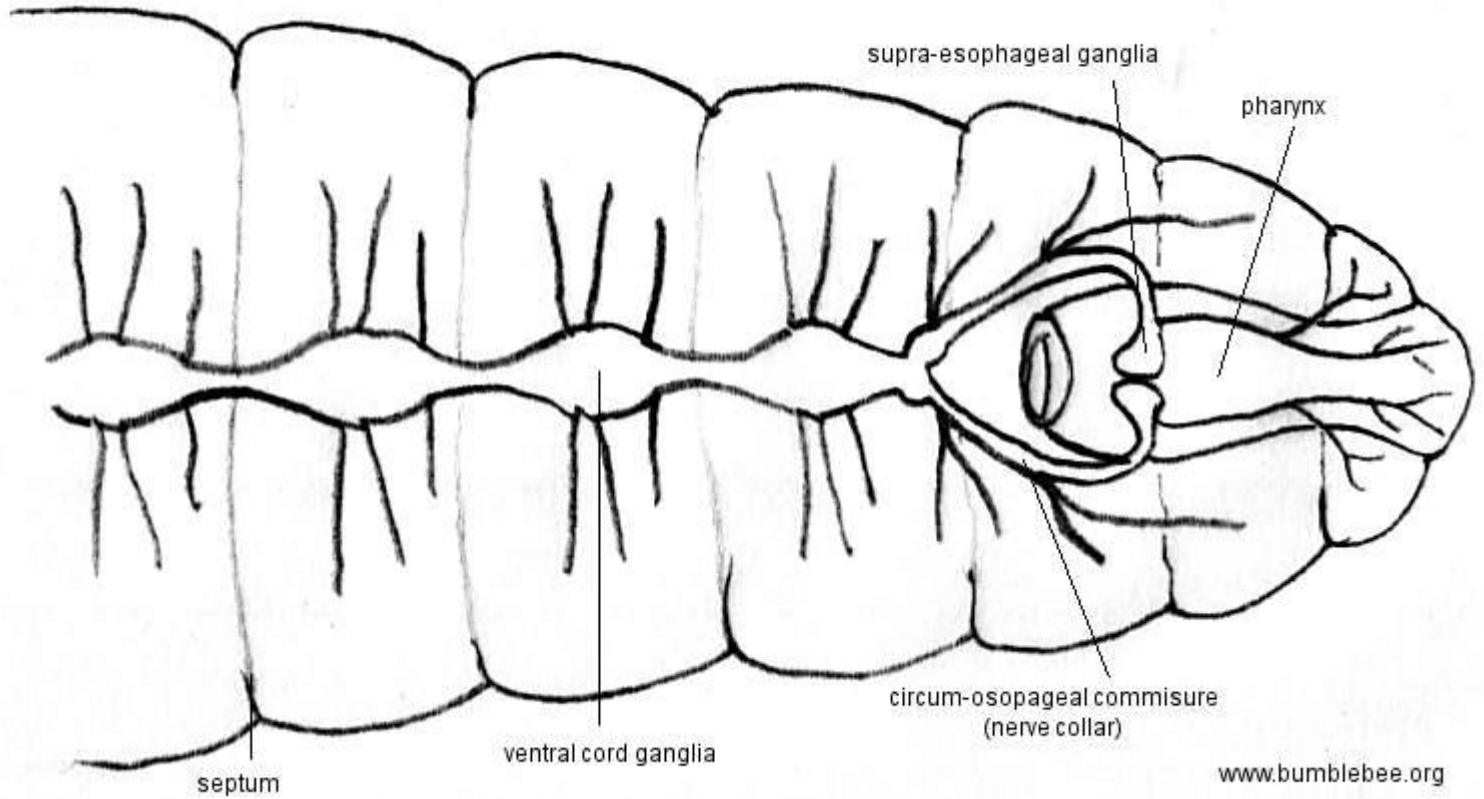
Figure 5: Reproductive structures of the earthworm.

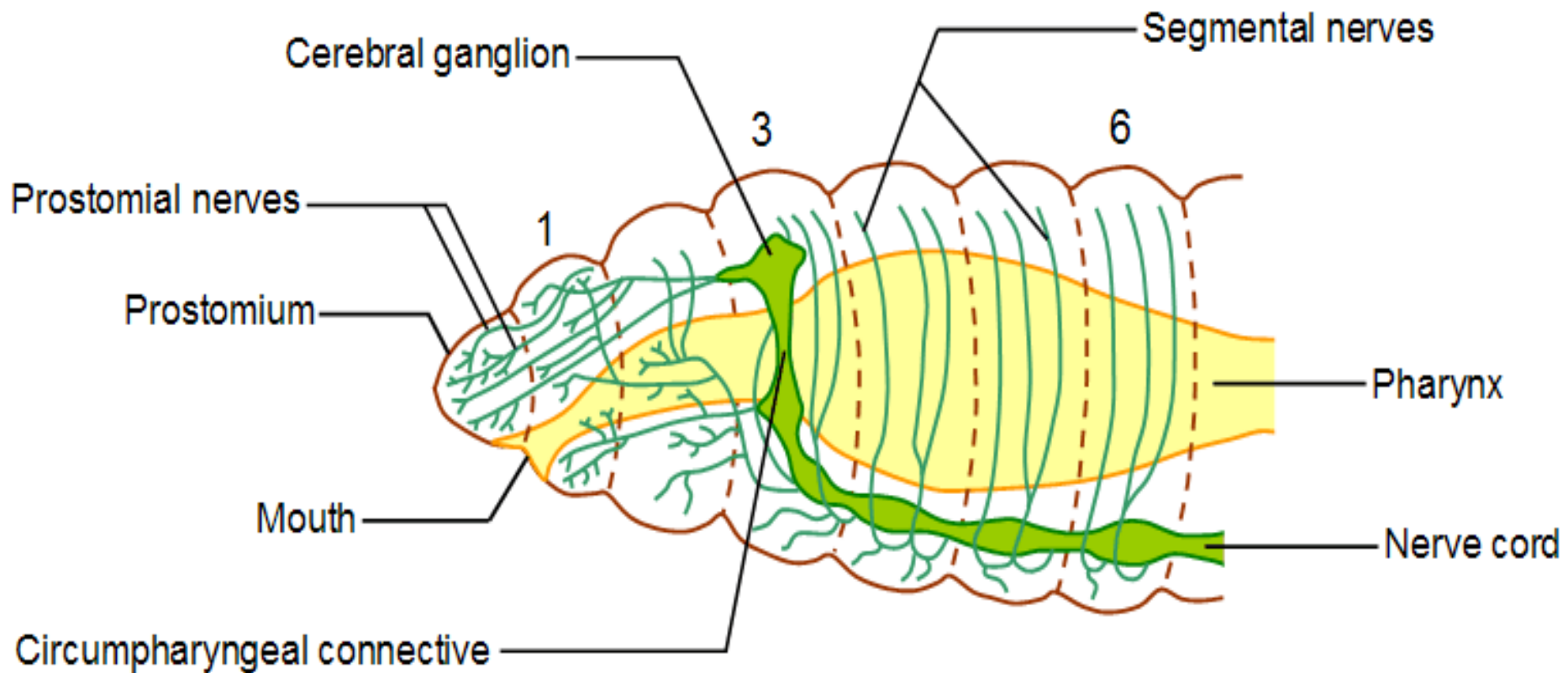




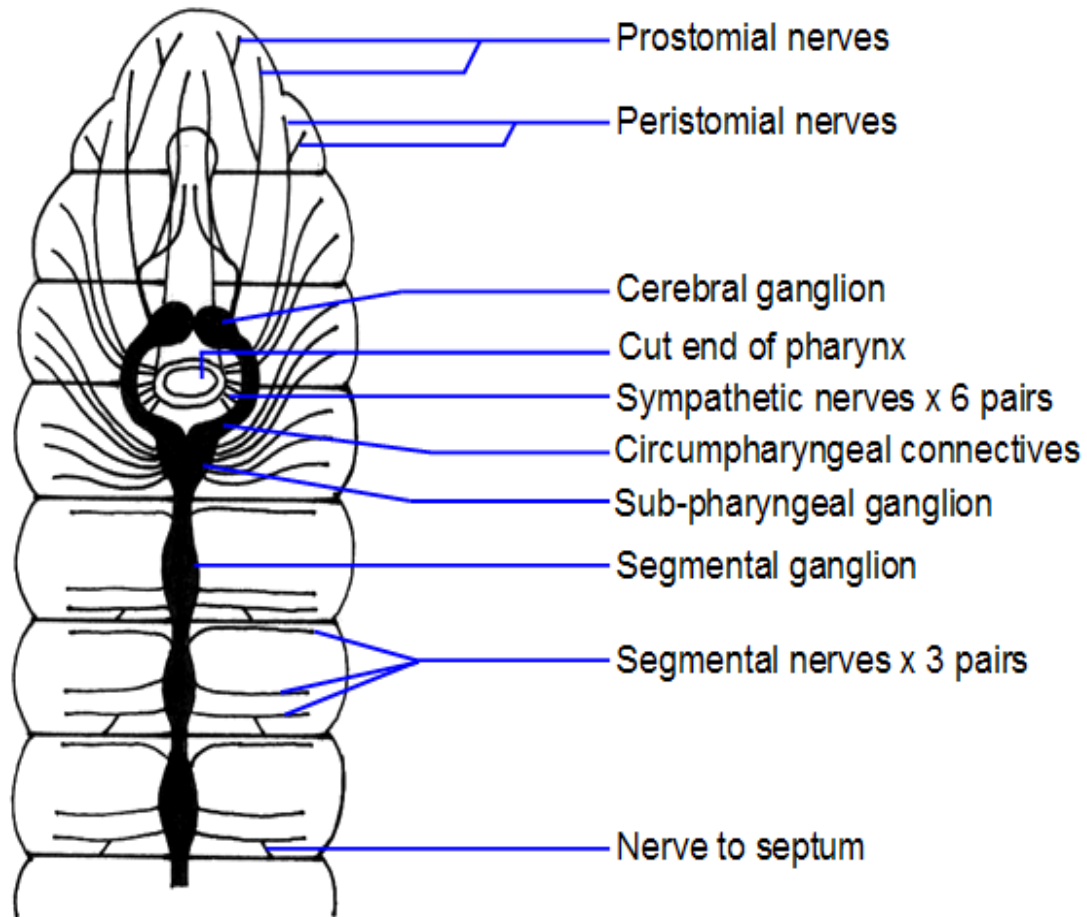


Lumbricus terrestris (common earthworm) nervous system

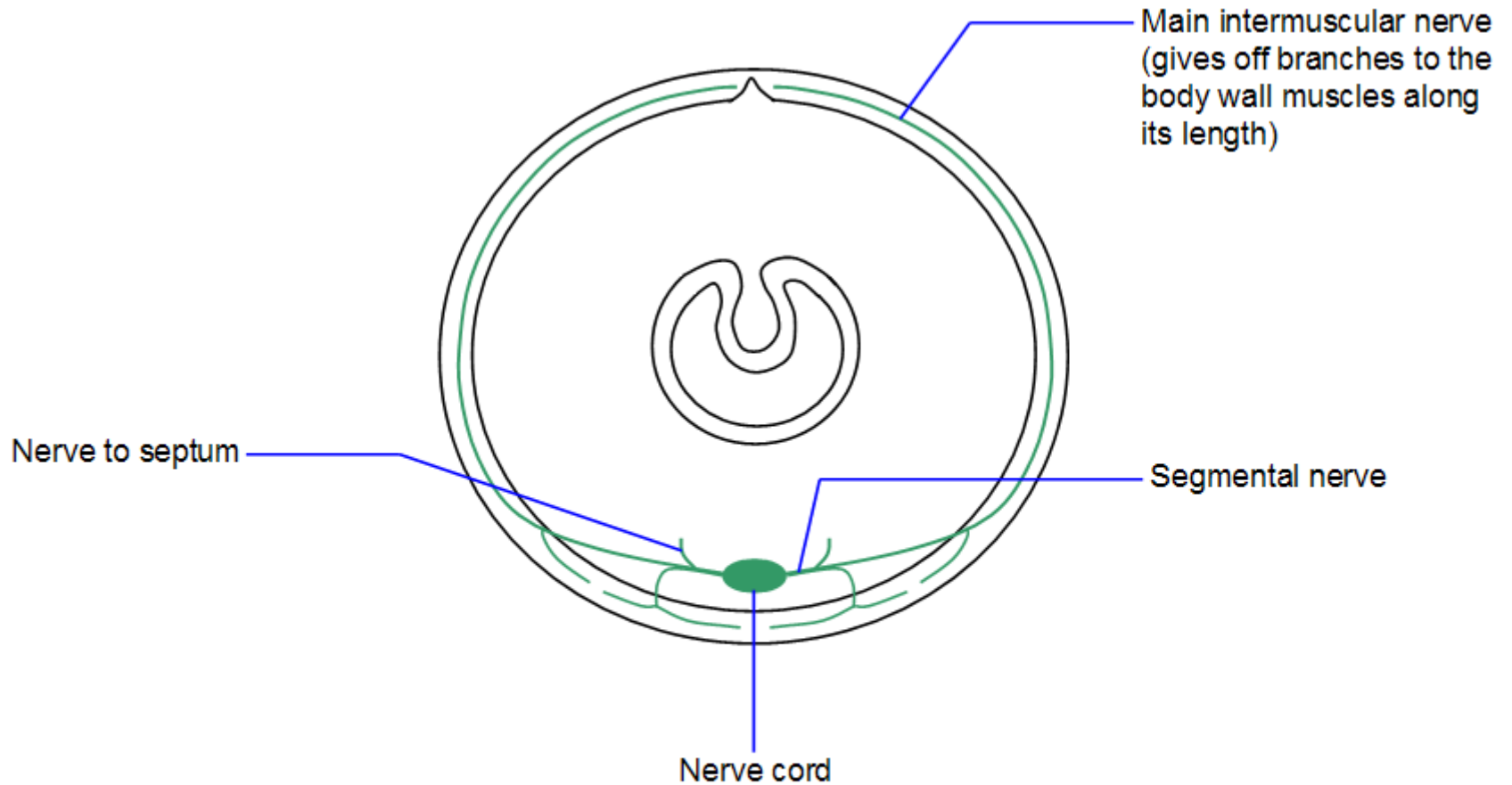




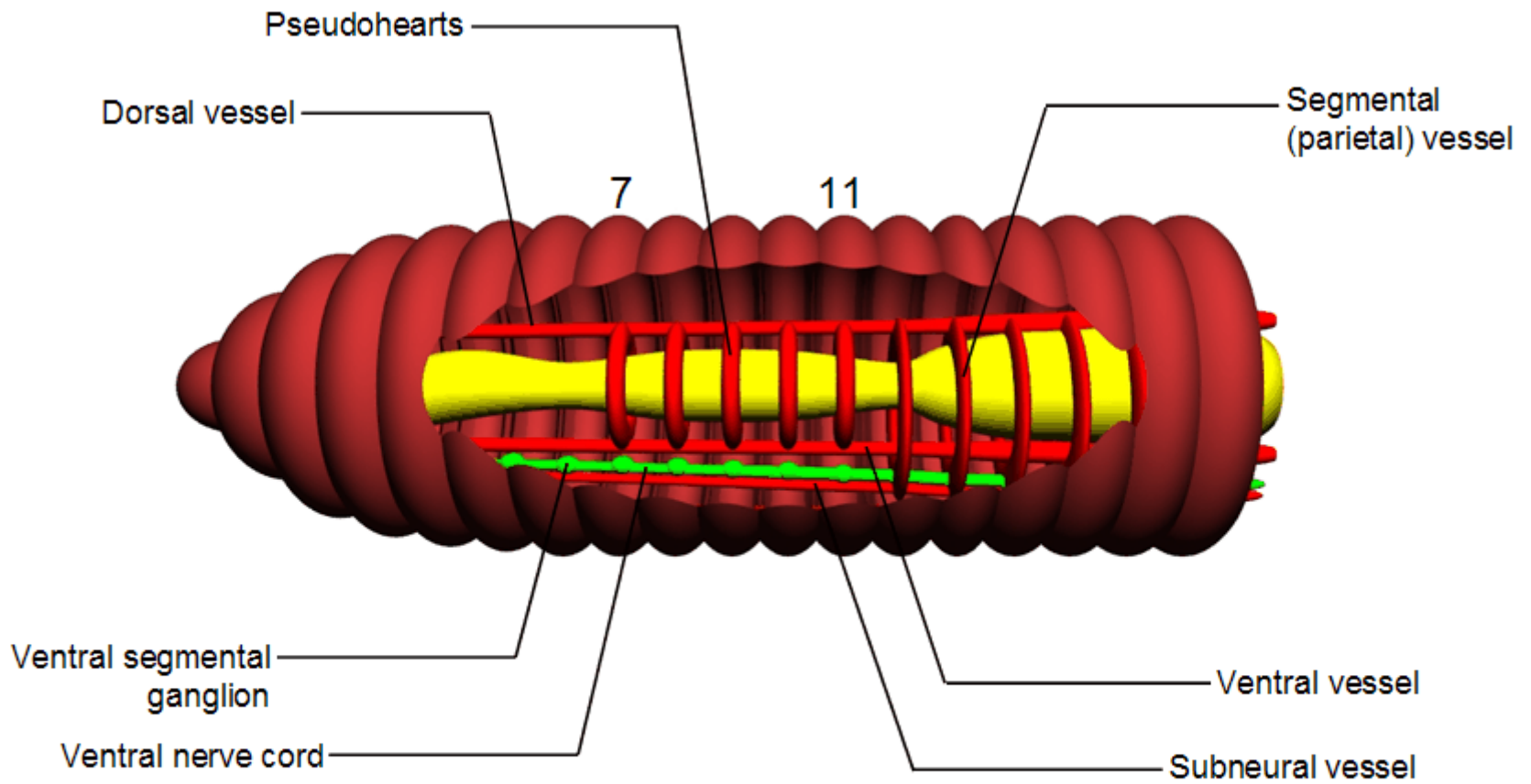
The anterior part of the central nervous system of *Lumbricus* (side-view)



Nervous system of *Lumbricus* (dorsal dissection)



The main branches of the posterior pair of segmental nerves in a segment of *Lumbricus*.



The circulatory system of *Lumbricus*

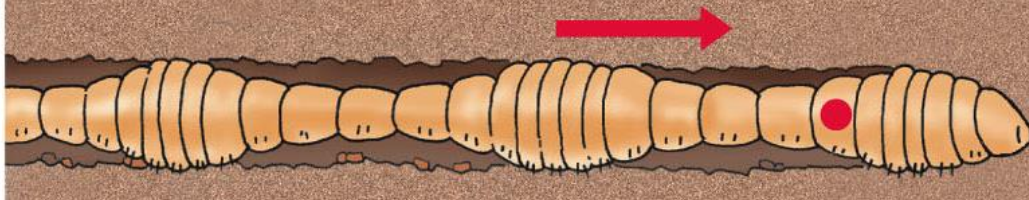
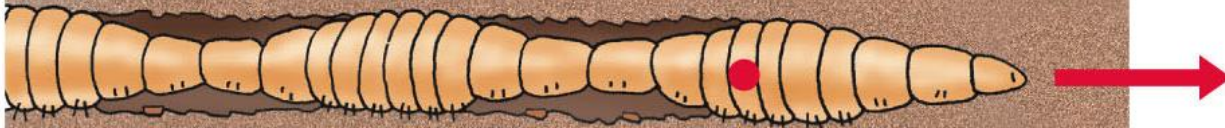
Constriction of circular muscles elongates the segments, pushing them forward.



Bristles anchor the segments to prevent backward sliding.



Constriction of longitudinal muscles shortens the segments, pulling the trailing segments forward.



Klasis : Polychaeta-Errentia



Klasis : Polychaeta-Sedentari



Serpula columbiana



Megalomma pigmentum



Eudistylia vanuxemi



Bispira sp.

Natanabe



Aphrodita japonica - Deniz Faresi

Praxillura maculata



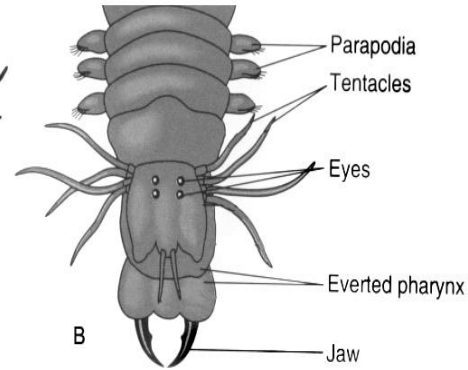
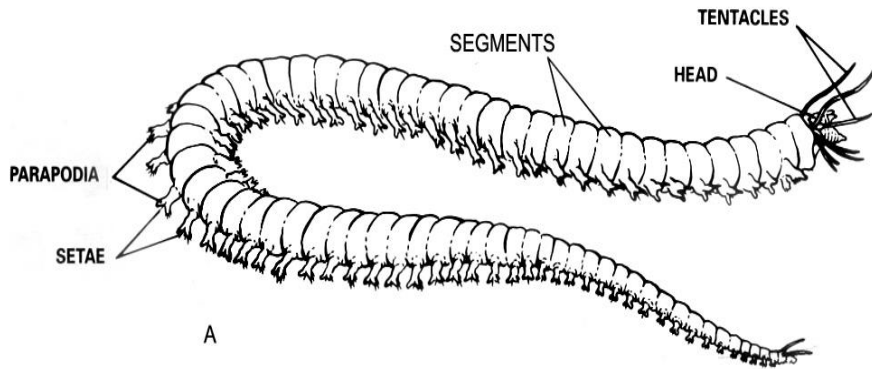


Figure 7: External features of the clamworm (A) and a close-up view of the head region (B).

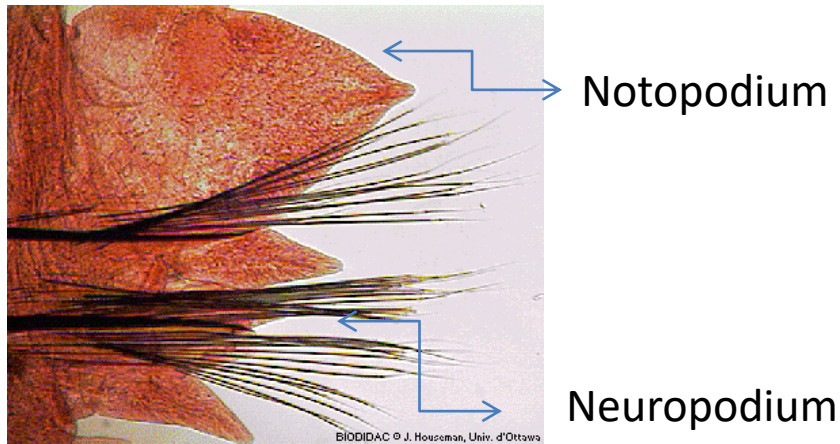
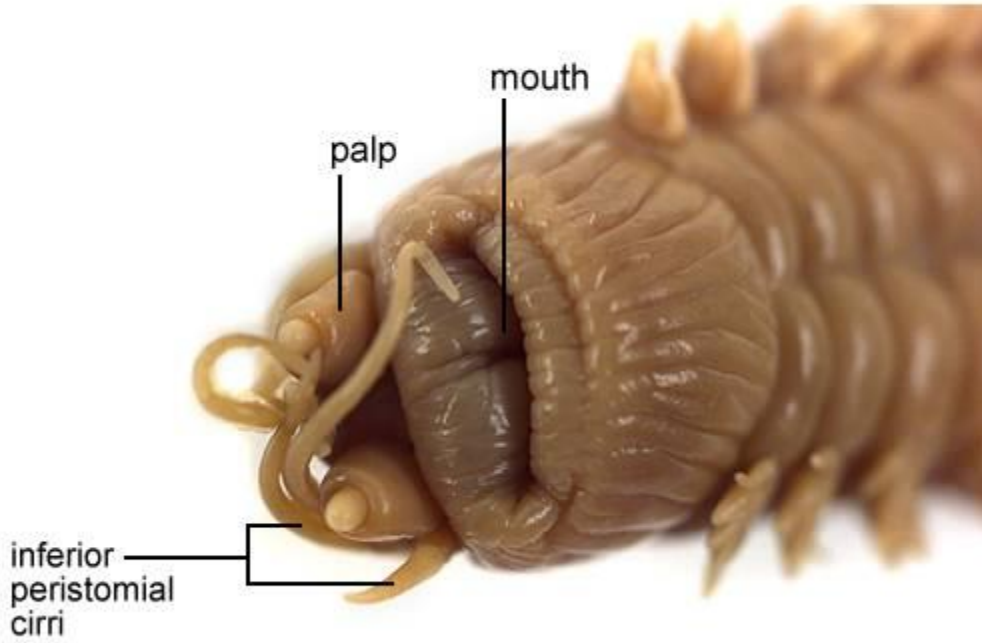


Tubeworms belong to Class [Polychaeta](#) and build soft tubes



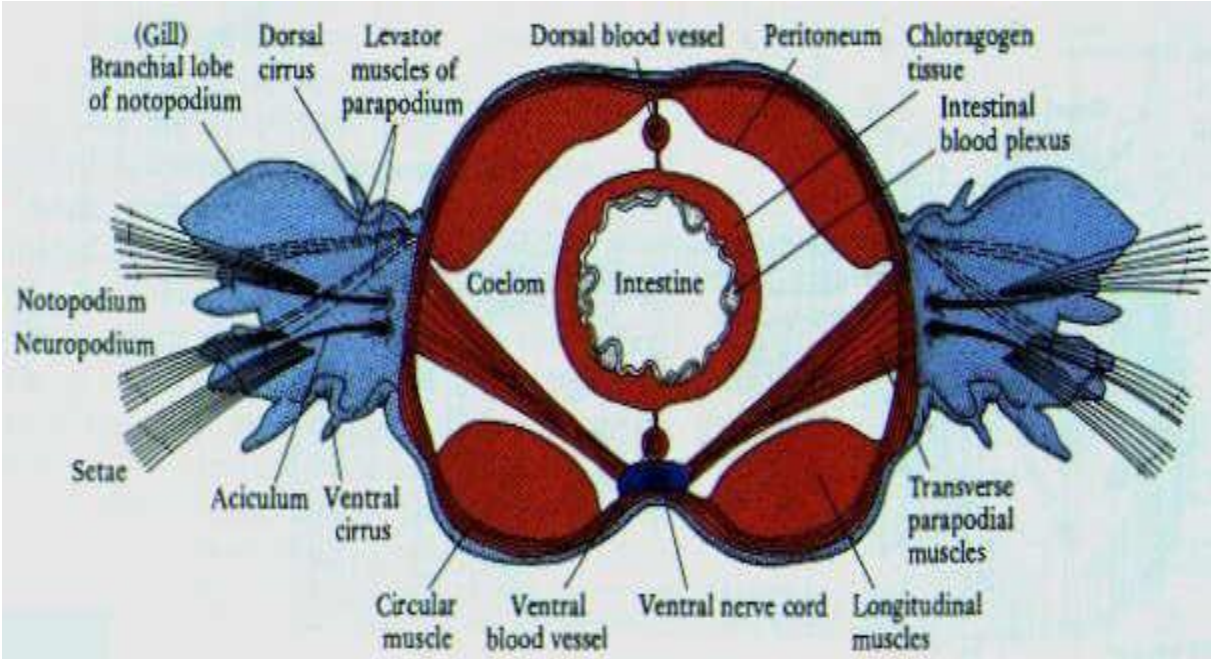
Fanworms belong to Class [Polychaeta](#), Family [Sabellidae](#) and build soft tubes.

Clamworm - Ventral Anterior View

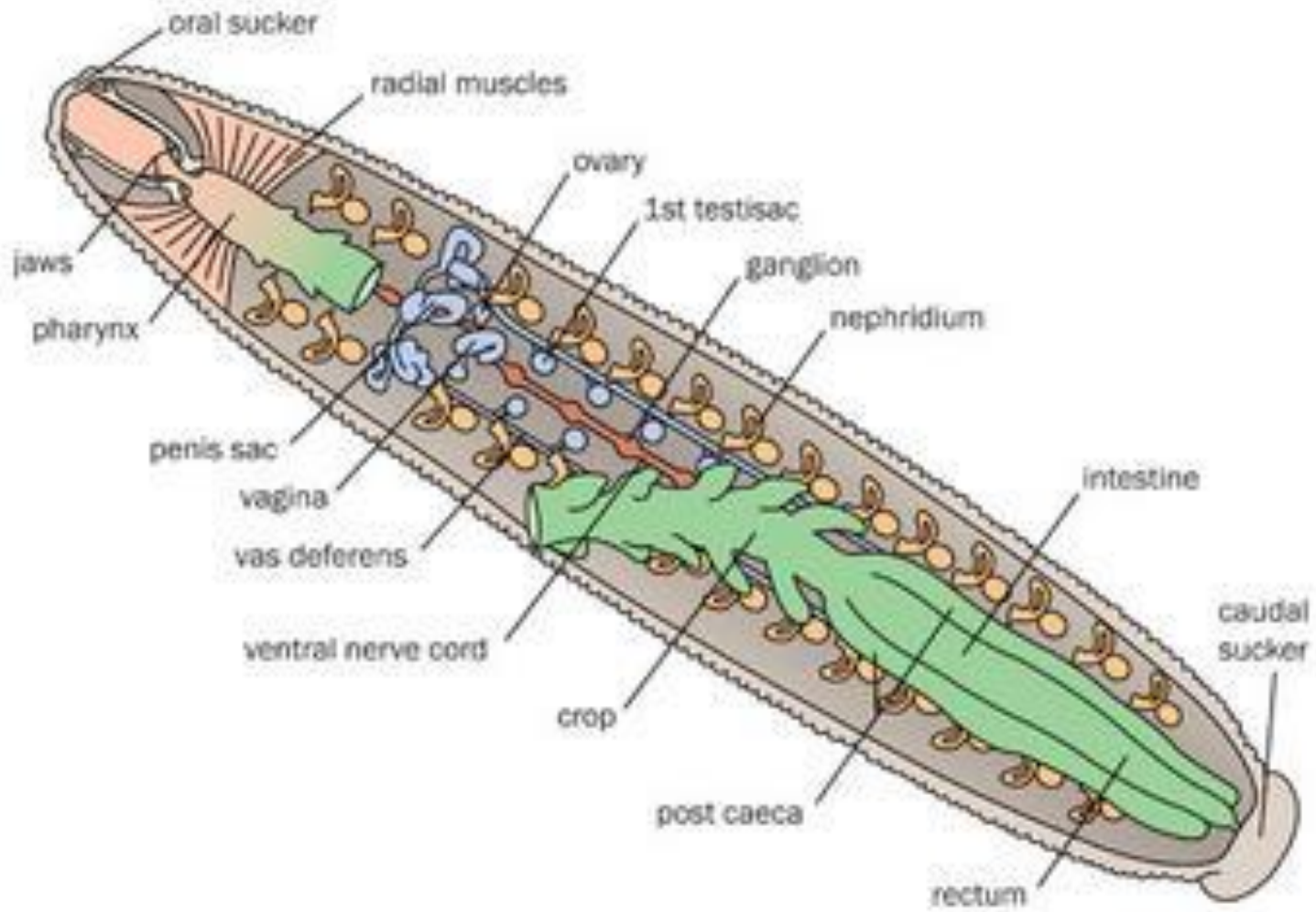


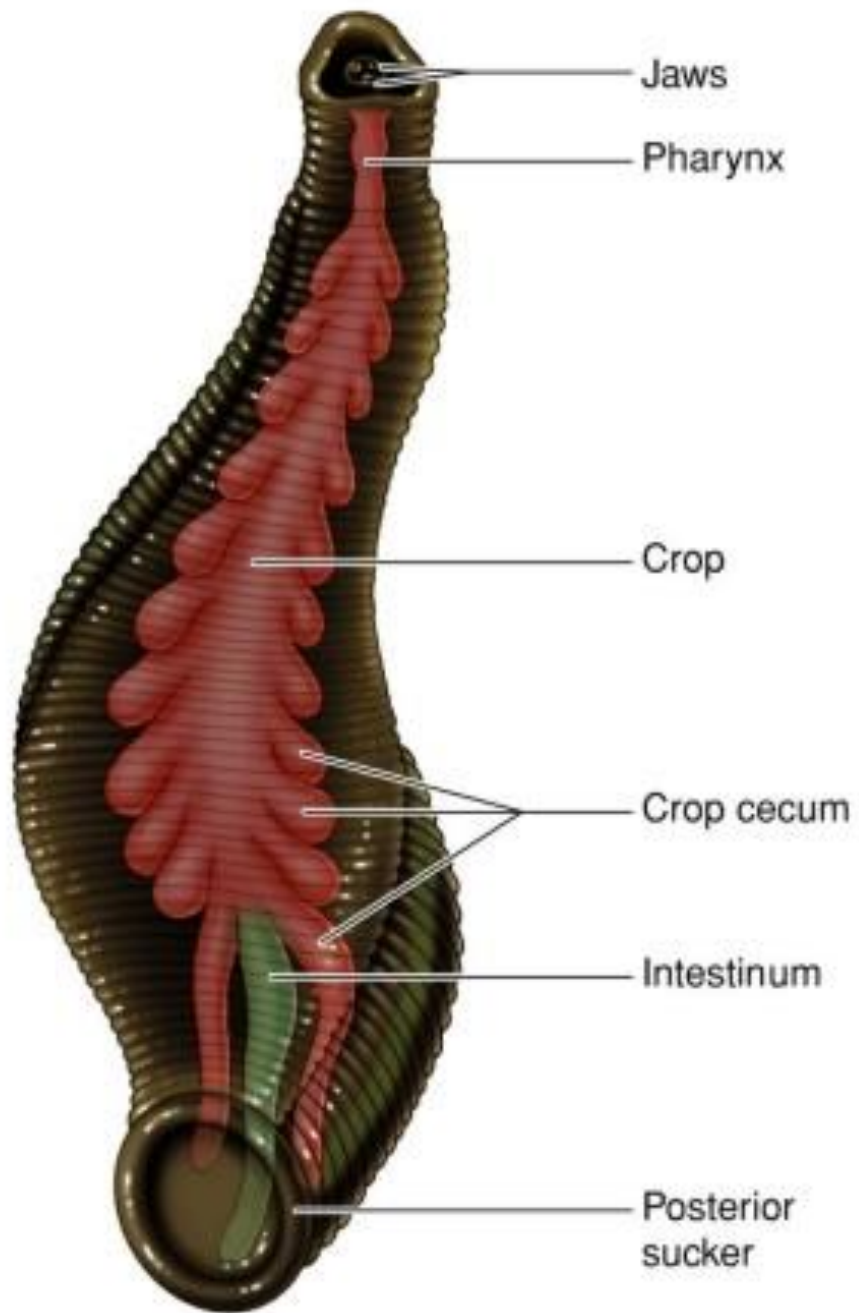


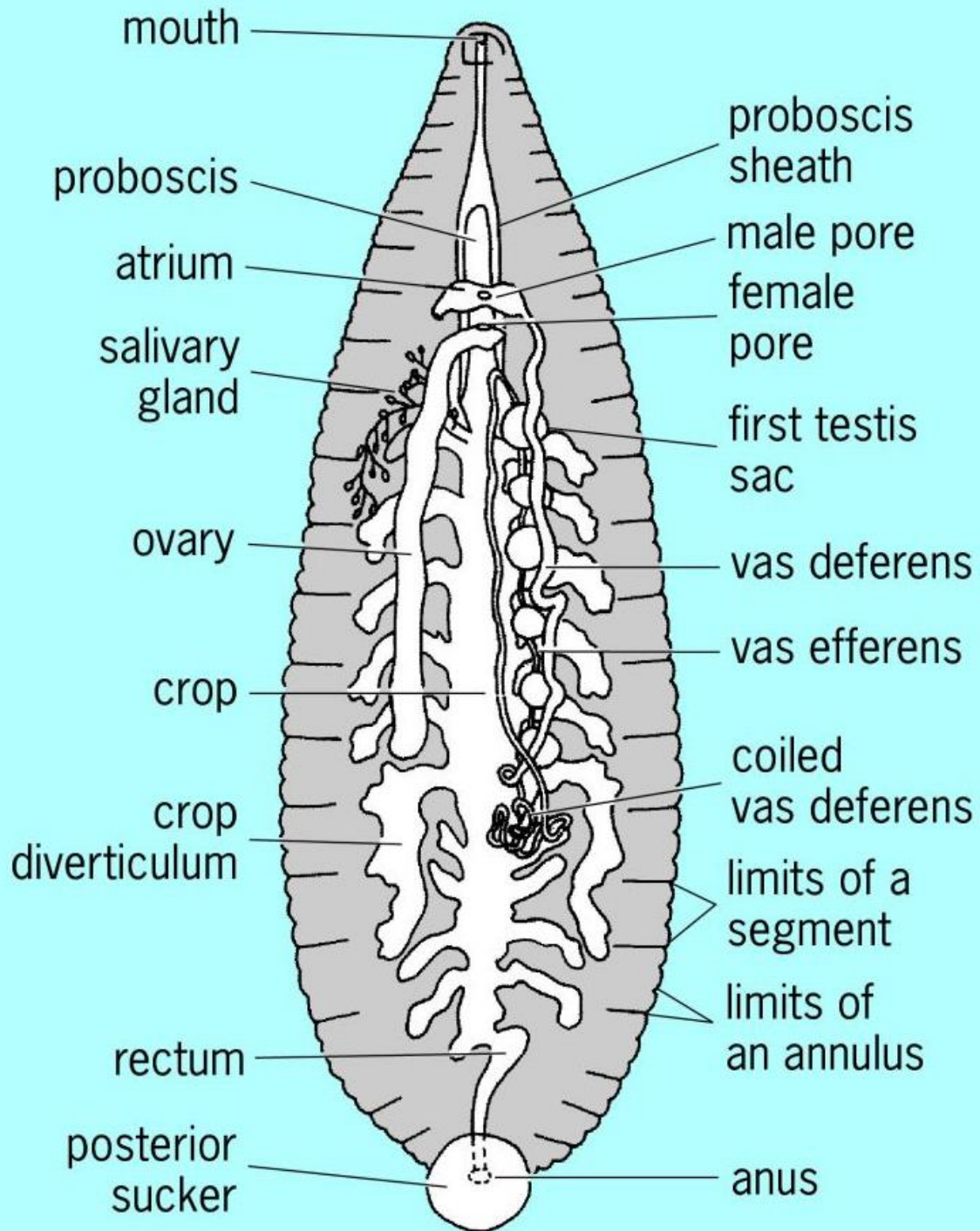
Tubifex tubifex



Klasis . Hirudinae



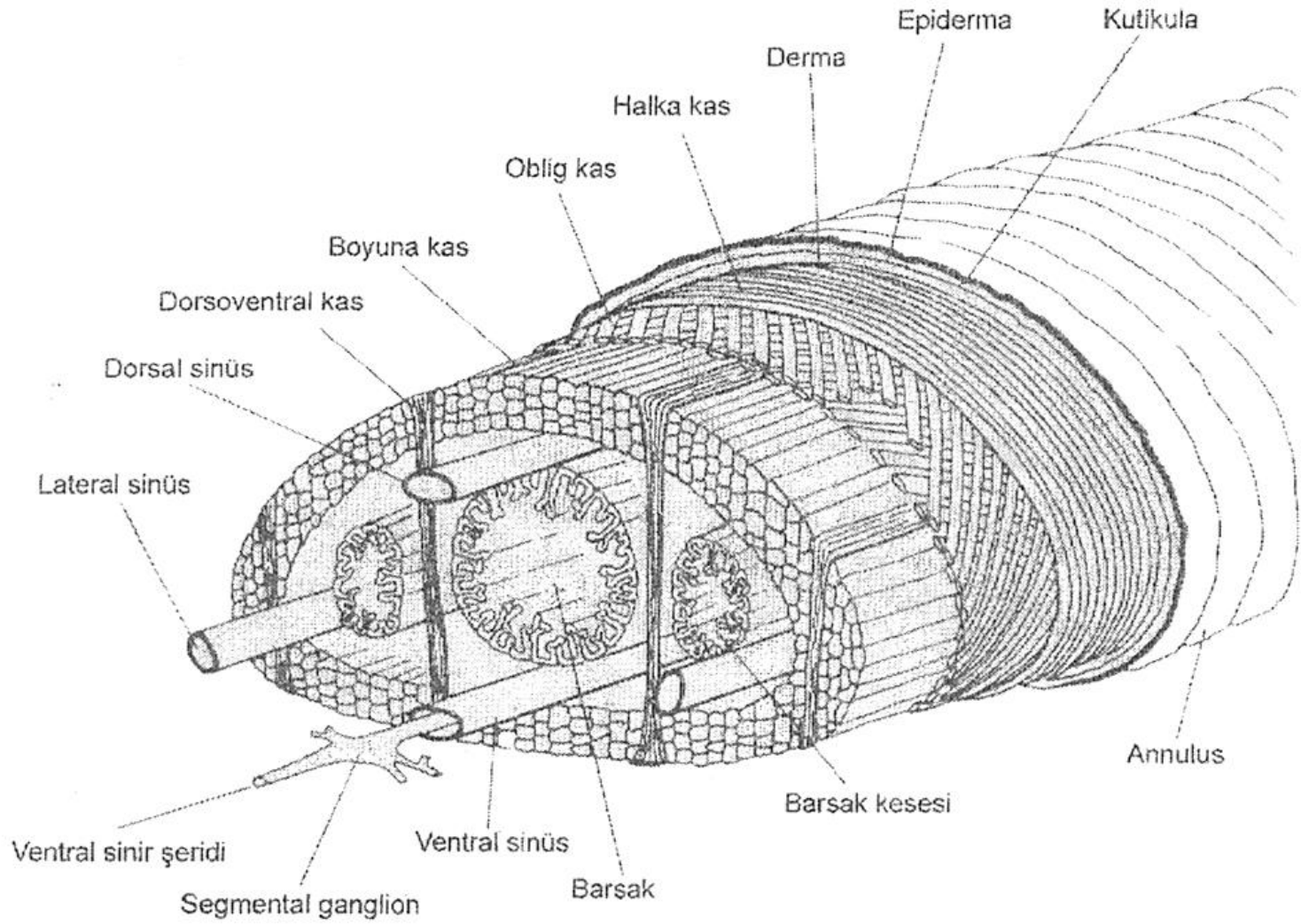






© Garold W. Sneegas





Şekil 11. 28. Sülük vücudundan enine kesit. Barsak ve cepleri, ventral sinir şeridi, sölomdaki temel sinirler ve çeşitli vücut tabakaları gösterilmiştir.