

# Adobe® Photoshop®

version

# 6.0

## New Feature Highlights

---

### The world-standard image-editing solution

Adobe Photoshop 6.0 software delivers the next generation of image-editing capabilities with powerful new features that offer something for every user. Now you can:

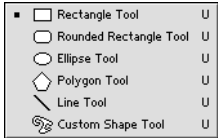
- **Expand beyond pixels.** Adobe Photoshop 6.0 redefines desktop image editing with integrated vector-drawing support that extends your creative range. With this support, you can incorporate editable vector shapes and text into your images, and then output these resolution-independent graphics and text with your image data. You can produce an Adobe PDF file for high-end printing or for output directly to a PostScript® printer. Photoshop 6.0 also opens new artistic options with content layers, layer styles, warping controls, and other creativity-inspiring features.
- **Produce superb Web graphics.** Adobe Photoshop 6.0 expands its Web toolkit to provide more timesaving, production-oriented features, including Adobe ImageReady™ 3.0 for advanced Web-production tasks. From offering slicing tools directly in Photoshop to introducing efficient new rollover styles in ImageReady, Photoshop 6.0 fine-tunes the toolkit considered essential by Web designers worldwide.
- **Master the power of Photoshop quickly.** As the world-standard image-editing solution, Adobe Photoshop is renowned for its power and breadth. One challenge it faces, though, is how to make this power more accessible to everyone. Photoshop 6.0 introduces hundreds of subtle enhancements—from on-canvas text entry to an intuitive new context-sensitive tool options bar—that make it easier for you to get to work quickly and use its features more fully. No matter how long you've been using Photoshop, for ten days or ten years, you'll appreciate the freedom to focus on being your best.

In addition, Photoshop 6.0 integrates tightly with Adobe's family of professional graphics programs for Web, print, and dynamic media, including Adobe Illustrator®, Adobe InDesign™, Adobe GoLive®, Adobe LiveMotion™, Adobe Acrobat®, Adobe After Effects®, and Adobe Premiere®. With the award-winning tools in Photoshop, you can produce the highest-quality images for any medium.

This document introduces the new features in Adobe Photoshop 6.0 and illustrates how Photoshop continues to provide the world's leading image-editing solution. The first three sections explain its new creativity, Web, and productivity features. The final sections describe Photoshop 6.0's pricing and availability, system requirements, and extra value included in the box.

### Expand beyond pixels

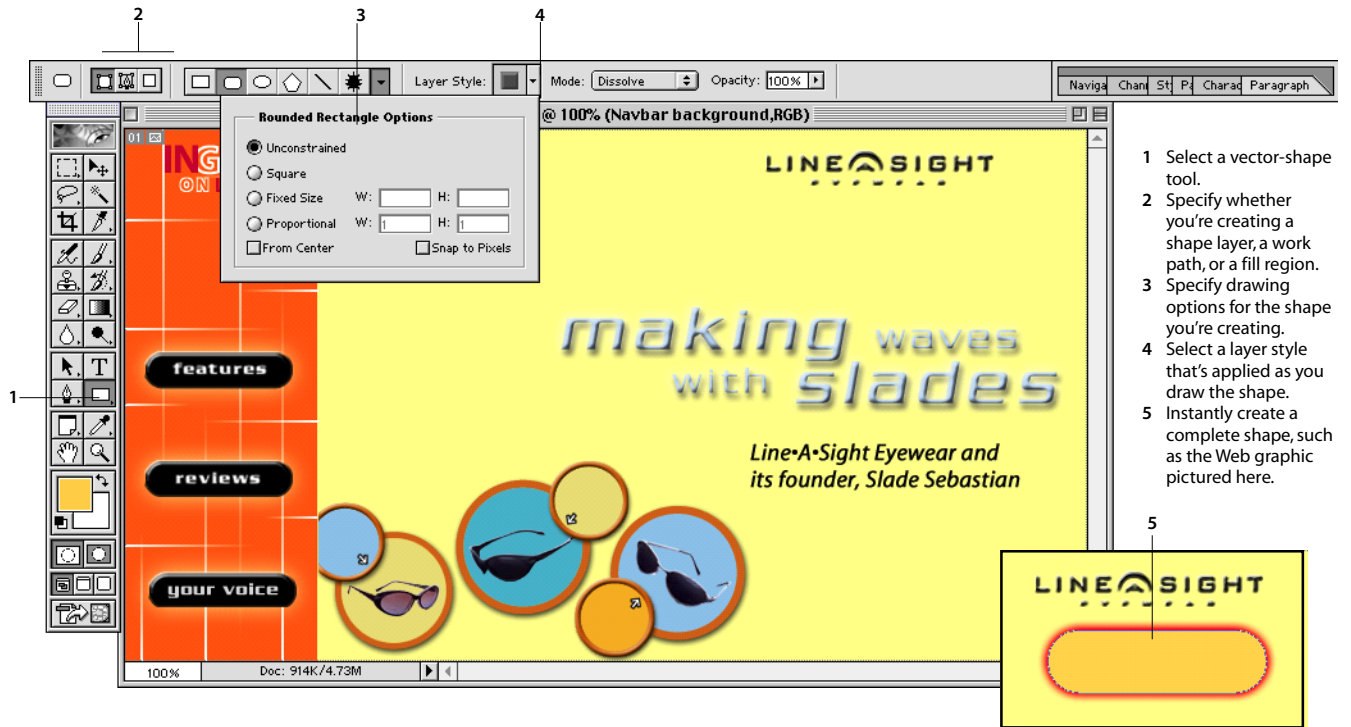
Adobe Photoshop 6.0 transforms traditional image editing by integrating tools for creating and outputting crisp, editable vector shapes and text. With these new vector tools, you can incorporate resolution-independent vectors into your images to produce designs for magazine covers, brochures, packaging, information graphics, and a wide spectrum of other print and Web materials. This new vector support lets you achieve a range of design effects more efficiently and cost-effectively than has previously been feasible from the desktop. In addition, Photoshop 6.0 provides content layers and layer styles to streamline layer design, new warping controls for isolating and making fine adjustments to targeted image areas, and expanded support for Adobe PDF files and 16-bit images.



New vector-shape tools

### Superb vector shape support

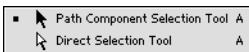
Photoshop 6.0 delivers vector-shape tools for quickly creating a wide variety of basic shapes. The new rectangle, rounded rectangle, ellipse, polygon, line, and custom shape tools produce shapes that you can use as shape layers, as vector masks (called *layer clipping paths*), or for painting pixels. When you select a drawing tool, a context-sensitive tool options bar appears at the top of the Photoshop workspace, so you can select drawing options. You can, for example, quickly set options for a rectangle, such as whether it's unconstrained, square, fixed size, proportional, or drawn from the center. In addition, you can select a layer style, blending mode, and opacity setting for a shape layer before you start drawing. These options make it efficient to incorporate vectors into your designs.



- 1 Select a vector-shape tool.
- 2 Specify whether you're creating a shape layer, a work path, or a fill region.
- 3 Specify drawing options for the shape you're creating.
- 4 Select a layer style that's applied as you draw the shape.
- 5 Instantly create a complete shape, such as the Web graphic pictured here.

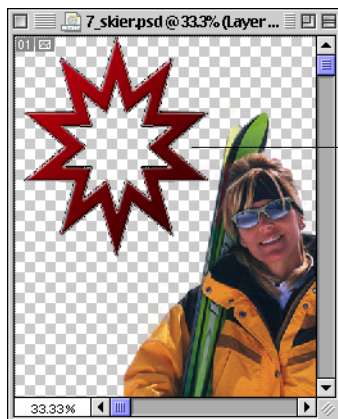


Add, Subtract, Intersect, and Exclude buttons for quickly combining shapes



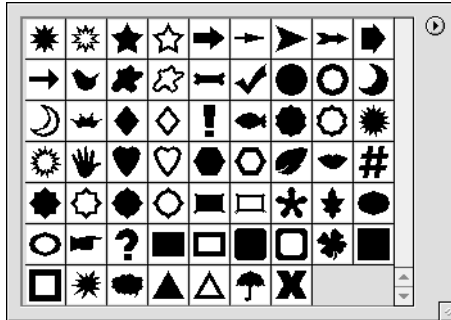
New direct-selection tool for easily editing vector graphics

Photoshop 6.0—like Adobe Illustrator and other Adobe programs—also provides pathfinder operations for quickly combining basic shapes into hard-to-draw shapes. These operations includes Add, Subtract, Intersect, and Exclude. You can then edit the shapes created—or any other shape you've drawn with the basic shape, pen, or freeform pen tool—at any time by selecting and rearranging path points with the new direct-selection tool. Or, you can add and subtract points with the add-anchor-point and delete-anchor-point tools, and then modify these points with the direct-selection tool.



Quickly create combination shapes using the new vector drawing tools and the buttons for boolean operations, such as Add or Subtract.

Once you've created shapes you want to use over again or share with colleagues, you can save them as custom shapes. Photoshop automatically stores custom shapes in a default custom shape library. Alternatively, you can use the Preset Manager to save custom shapes in separate custom shape libraries, and then load those libraries with a single click from the Preset Manager or the context-sensitive tool options bar. Shape libraries are portable, so workgroups can easily design, share, and add onto them. Photoshop 6.0 also ships with a selection of custom shape libraries.

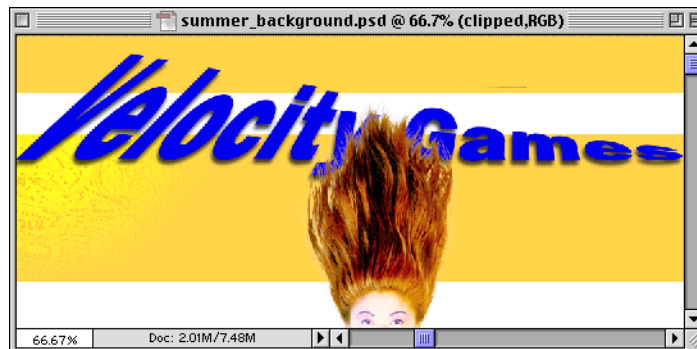


Select custom shapes from the libraries included with Photoshop 6.0, or create and store your own custom shapes.

Finally, the new vector-drawing tools are straightforward to automate because their activities are scriptable—so you can include them in the actions you create with the Actions palette. For more details about the context-sensitive tool options bar, see “Streamlined interface” later in this document. For details about the Preset Manager, see “Preset Manager” later in this document.

### Vector text support

With Photoshop 6.0, you can easily combine vector text with images, and then output sharp text edges with your image data to produce high-quality results. What's more, Photoshop includes extensive new type controls to help you produce the best-looking text possible. (For details, see “Expanded text options” later in this document.) Photoshop 6.0 also provides text-warping controls, so you can freely twist and warp text to produce cool effects. Best of all, the text remains editable no matter how you manipulate it. The combination of crisp vector text and raster image data opens new creative options for your design work.



Combine vector text with images and output flawless results. For example, design an image in which a model's hair flows over crisp text. Also warp text and edit it later.

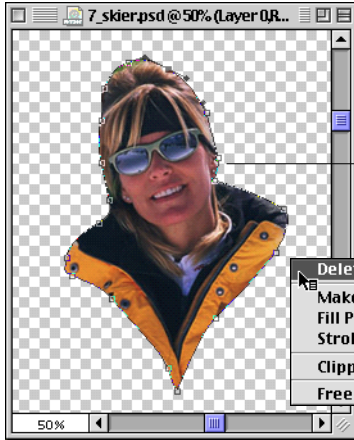
### Vector-based masks

One of the most powerful ways to apply Photoshop's new vector-drawing capabilities is by creating editable shapes to clip out image areas. You can modify these layer clipping paths just as you would any other vector path using the direct-selection, add-anchor-point, and delete-anchor-point tools. To produce a mix of hard and soft masking edges, simply combine layer clipping paths and raster masks on the same layer. Or, produce fabulous editable effects by filling layer clipping paths with dynamic content, such as color and tonal adjustments, solid colors, patterns, and gradients. (For details, see “Content layers” later in this section.)



Select this button to create a work path, which you can then convert to a layer clipping path.

Photoshop 6.0 also includes interface enhancements, such as a context-sensitive menu that makes it easy to stroke, fill, transform, and remove layer clipping paths.



Easily create and edit layer clipping paths (vector masks) using the new vector shape tools and the pen and freeform pen tools.

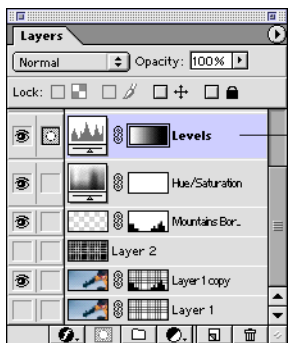
Control-click (Mac OS) or right-click (Windows) a layer clipping path to choose commands that affect that mask.

### Resolution-independent vector output

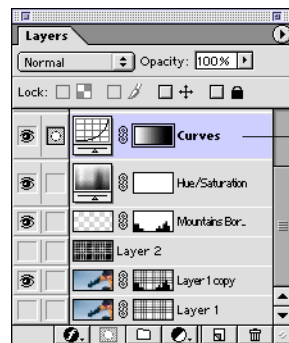
Creating vector graphics and text to incorporate into your images is only one part of a complete workflow. You also need to be able to output clean-edged vectors along with your raster image data—all with the highest-quality printed results. Consider the example of an image in which a model's hair flows over the top of crisp text. In the past, preparing this file for output from a desktop system would have involved multiple software programs and been prohibitively labor-intensive. To get the final result you wanted, you would instead have relied on expensive, high-end prepress systems. Now you can quickly and easily achieve professional printed results directly from Photoshop 6.0. In fact, Photoshop 6.0 offers a choice of workflows: You can print images containing resolution-independent shapes and text directly to any PostScript output device. Or, you can output resolution-independent shapes and text with your images in compact PDF files. Any service provider with Adobe Acrobat® InProduction™ (or other Acrobat prepress plug-ins) can then prepare those PDF files for high-end printing. From creation to final printed results, Photoshop 6.0 delivers complete support for combining sharp-edged vector objects with your raster images.

### Content layers

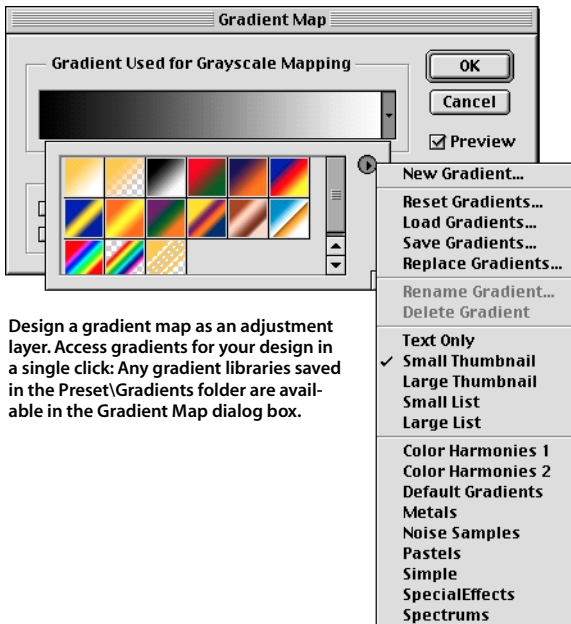
In Photoshop 6.0, you can create two kinds of content layers: adjustment layers and fill layers. Adjustment layers have long been an efficient way to apply color and tonal adjustments to one or more layers at once, without permanently altering an image's pixels. Fill layers make it equally as quick to apply editable gradients, patterns, and solid colors to layers. Photoshop 6.0 now lets you change one type of content layer for another without having to delete the original layer or layer mask and set up a new one. For example, you could apply a Levels adjustment, and then decide that a Curves adjustment would produce a better result. With Photoshop 6.0, you simply switch one content layer for another, and modify its settings.



If you set up a content layer and then decide you want to apply a different type of adjustment...



...you can easily swap it out—without having to start over with a new adjustment layer.



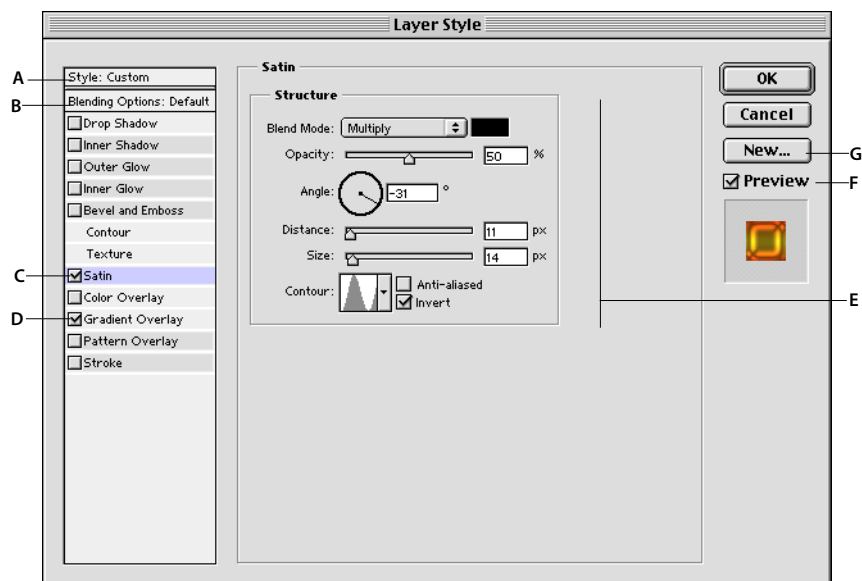
The new gradient, pattern, and solid fills work well with vector shapes and layer clipping paths for similar reasons: It's so easy to experiment with how they look. You could create a red square, for example, and then refill it with a gradient or pattern for a different look. This dynamic editability makes it more fun and engaging to test different creative options as you assemble an image.

In addition, Photoshop 6.0 includes a new adjustment layer type, called gradient map, which takes an image's luminance values and maps them to a gradient. You can use this image adjustment feature to turn black-and-white or color originals into subtle multi-toned images. Gradient map supplements the adjustment layer types that were previously available, which include Levels, Curves, Color Balance, Brightness/Contrast, Hue/Saturation, Channel Mixer, and Posterize.

### Layer styles

Photoshop 6.0 presents an intuitive new layer effects interface, a new selection of effect options, and new support for saving your layer effect designs as layer styles for on-going use. First introduced in Photoshop 5.0, layer effects offer a fast way to apply drop shadows, glows, bevels, embossing, and other effects to layers. Once applied, these effects update automatically when you change the content of the layer. They are particularly useful for designing editable type treatments or creating Web buttons and banners.

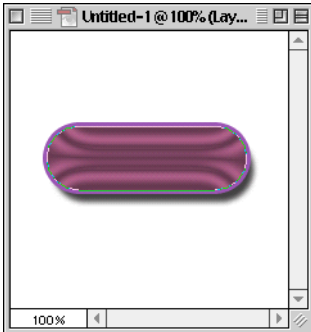
Now layer effects are easier than ever to define and apply. The new Layer Styles dialog box shows at a glance which effects are applied to the currently selected layer. To add effects to a layer, you simply check each one you want in the list. Then click each effect name to display its associated options and specify settings for it. Photoshop 6.0's layer effects even support larger sizes, so you can use them with high-resolution images.



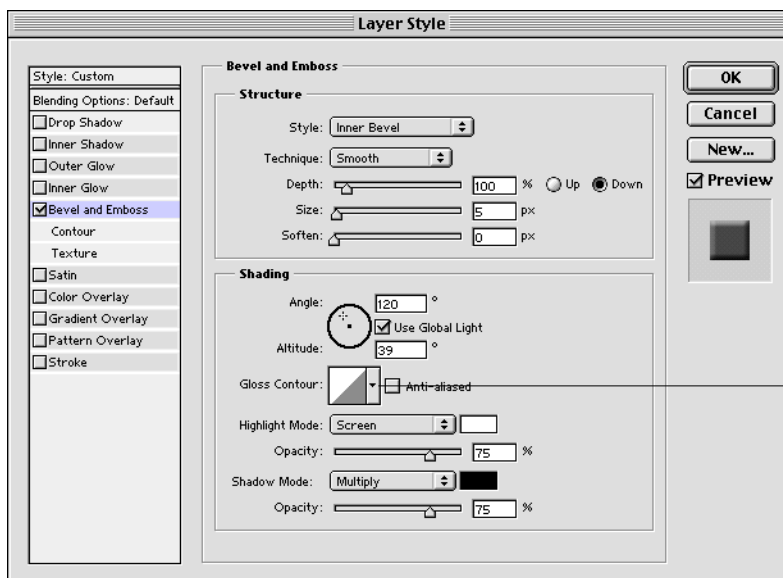
- A Click the style label to display thumbnail representations of all of your available layer styles.
- B Specify blend settings as part of a layer effect design, and then save those settings in a layer style.
- C Click a layer effect name to make its options appear in the Layer Style dialog box.
- D Check a layer effect to include it in your design.
- E Produce eye-catching metallic and glow effects with the new satin layer effect.
- F Preview your layer effect design as you create it.
- G Click New to save the current combination of settings as a layer style for on-going use.

Photoshop 6.0 also introduces new layer effects—strokes, overlays (solid color, pattern, and gradient), and satins—as well as dozens of enhancements to existing layer effects. Plus, it adds general and advanced blending and transparency settings, which you can save with a layer style. And, finally, it adds contours to the options for many layer effects, which you can use to modulate the shape of a bevel, the style of a satin effect, and so on. Here's a brief overview of the new layer effect options:

- **Stroke** Apply strokes with widths of up to 250 pixels to vector or raster objects. (Photoshop intelligently determines whether to apply a vector or raster stroke based on the type of object.) Specify where the stroke is positioned, what blend mode and opacity settings it uses, and whether it's filled with a solid color, a gradient, or a pattern.
- **Solid, pattern, and gradient overlays** Create separate solid, pattern, and gradient fills. Or, combine these fills along with varying opacity and blend mode settings to produce extraordinary visual results.
- **Satin** Create an interference pattern that interacts with the shape of a layer to produce eye-catching metallic and glow effects.
- **Blending options** Specify general and advanced blending options that control how a layer style interacts with the underlying image layers. For example, set a layer style to partially or completely knock out the underlying image layers. (In partial knockouts, the effect blends with layers lower in the stacking order.) Knockouts work particularly well for creating good-looking transparent button effects. Or, restrict blending to certain channels, so that the layer style interacts with some color components of the image but leaves others untouched.



Here's a layer style example that uses the new satin and stroke effects, plus a solid color overlay and drop shadow.

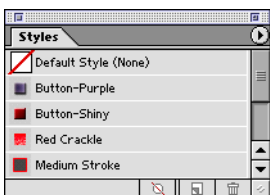


Specify a contour to control the gloss effect.

Here's a sampling of some of the enhancements made to existing layer effects:

- **Drop Shadows/Inner Shadows** You can now set spread and noise values for drop shadows, and choke and noise values for inner shadows.
- **Inner and Outer Glows** New glow options include noise, jitter, and spread (outer glow) or choke (inner glow). Plus, you can now specify a gradient color for both inner and outer glows.
- **Bevel and Emboss** You can choose among three new bevel techniques: Smooth, Chisel Hard, and Chisel Soft. Plus, you can apply textures, contours, and metallic effects, and you can more precisely control shading.

Once you've designed a layer effect, you can save it as a layer style for future use. Layer styles work just like unsaved layer effects, applying nondestructive changes that update automatically when you change a layer. Photoshop stores styles in a default styles library file. You can also store styles in your own style libraries using the Preset Manager. Those libraries are then available for single-click loading in the Preset Manager, on the Styles palette menu, and in the context-sensitive tool options bar (when a vector drawing tool is selected). Style libraries are portable, so you can share them with colleagues. Plus, Photoshop layer styles are compatible with ImageReady—you can open a Photoshop layer style library in ImageReady, and vice-versa.

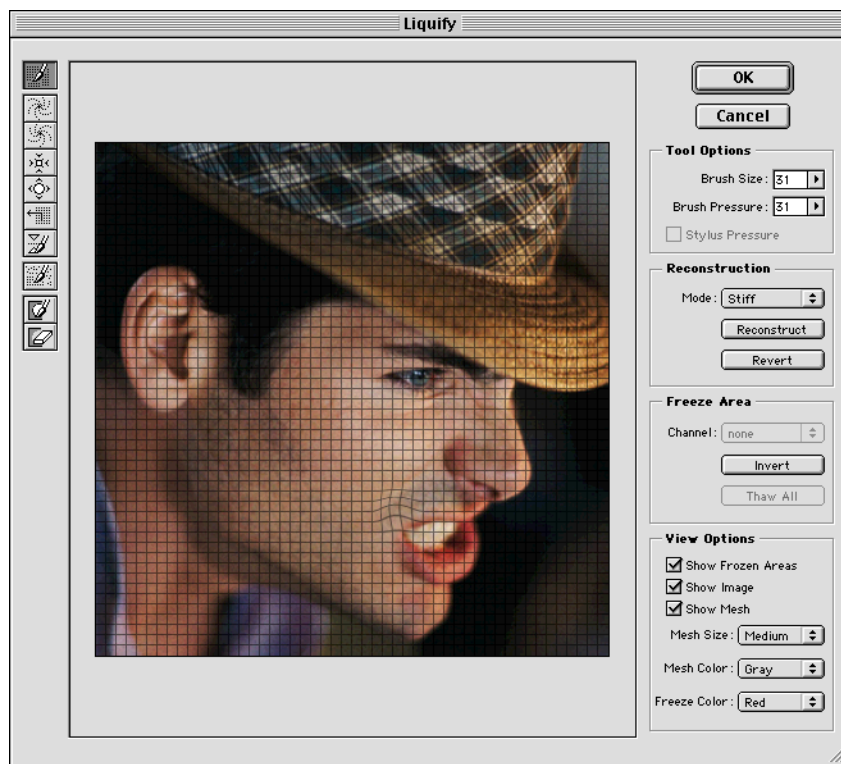


Click a style in the Styles palette to apply it to objects. Select options for how styles are listed in the palette: as thumbnails or in a text list. Even choose how compact or visible those items are.

Applying layer styles is easy: You can create text, shapes, and other objects, and then click a style in the Styles palette to apply it. Or, you can select a vector drawing tool, choose a layer style from the context-sensitive tool options bar, and start drawing. Photoshop then applies the style as you draw. The combination of layer styles and the new vector-drawing tools opens up a wide array of creative opportunities for print and Web designers alike—all while supporting streamlined, production-oriented efficiency.

### Liquify command

With the new Liquify command in Photoshop 6.0, you can quickly distort or warp an image by interactively pushing, pulling, rotating, enlarging, and shrinking different image areas. These distortion controls are ideal for a wide range of tasks from making fine warping adjustments to a small image area to making sweeping adjustments for a wildly warped-out effect. When you open the Liquify window, you can display a fine mesh over the image to help you achieve precise adjustments. To prevent unwanted changes, freeze certain parts of the image and zero in on the areas you want to modify. To switch between largescale changes and finer adjustments, vary the size of the brush you're using. The Liquify command also provides options for reconstructing the original image as needed.



Display the liquify mesh and then drag its vertices to adjust an image—for example, to fine-tune the grimace on the biker's face pictured here. Freeze areas of the picture that you want to preserve.



### Enhanced PDF support

Photoshop 6.0 extends its integration with Adobe products by offering enhanced support for Adobe PDF, including the ability to save duotones, spot-color channels, transparency, layers, and vector objects in PDF files. In addition, you can annotate a Photoshop (PSD) file with voice or written comments and then export the file and annotations as a compact PDF file for review. The other alternative is to distribute the PSD file for review, but PDF files offer certain advantages. For one thing, PDF files are more compact than PSD files. Plus, they can help ensure a smoother workflow because clients and colleagues can review a file without having Photoshop installed (all they need is the free Acrobat Reader) and without worrying about accidental changes. You can also export image data and resolution-independent text and shapes in PDF files for high-end output.

### Expanded 16-bit image support

Photoshop 6.0 is expanding its support for 16-bit images. For one thing, it can now handle 16-bit LAB images and even convert them to other modes. In addition, you can now apply the following filters to 16-bit images: Gaussian Blur, Add Noise, Median, Unsharp Mask, High Pass, Dust & Scratches, and Gradient Map. The Canvas Size command is also enabled when you work with 16-bit images in Photoshop 6.0.

### Produce superb Web graphics

Considered an essential tool by Web designers worldwide, Adobe Photoshop 6.0 is extending its Web toolkit to include more timesaving, production-oriented features, including tighter integration with its advanced Web production tool, Adobe ImageReady 3.0. Photoshop 6.0 now includes built-in slicing tools, so you can slice Web images and output them directly from Photoshop or move them to ImageReady for more work. Photoshop and ImageReady both offer dynamic layer-based slicing where the edge of the slice is bound to the outermost pixel on the layer and adjusts automatically to any layer changes. New rollover styles, enhanced image map support, and weighted optimization controls all help you streamline Web production or refine the visual results you can achieve on-screen. The integrated vector drawing tools and layer styles presented in the previous section also contribute to faster creation of sophisticated Web graphics. Plus, Photoshop offers tighter integration with Adobe's premier Web authoring program, Adobe GoLive. This section provides a brief overview of all of these exciting new Web features.

### Slice tools

You can now slice Web graphics directly in Photoshop 6.0. (Previously, slicing tools were only available in ImageReady.) Slicing images is the key to incorporating large or complex image files into your Web site because Web browsers can download and display sliced images more quickly. In addition, sliced images give you more control over how optimization options are applied because you can select separate slices and apply appropriate settings. An image that includes solid colors, text, and photographic images, for example, looks best with different settings applied to different areas. Once you've sliced an image, you can move it into ImageReady to create rollovers or set up animations. Or, you can generate HTML pages directly from Photoshop, including the HTML table code necessary to reassemble the sliced image.



Use the slice tools to slice images directly in Photoshop. Then apply separate compression settings to different areas—for example, apply GIF settings to text and solid colors, and JPEG settings to photographic images. Also, move the sliced image into ImageReady to set up rollovers and other advanced effects.

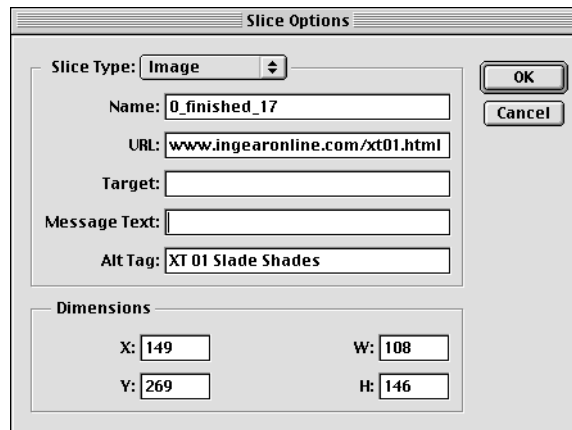




New slice tools in Photoshop 6.0

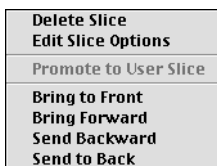
With the slicing tools in Photoshop, you can now:

- Create user-defined slices by dragging rectangles over different image areas with the slice tool. Photoshop defines autoslices for the areas you don't slice, so that it can generate an HTML table during export.
- Hide, show, lock, clear, and delete slices, as necessary.
- Select individual slices and apply different optimization settings to them in the Save For Web window. You could, for example, apply GIF settings to areas containing text and solid colors, and assign JPEG settings to image areas.
- Assign a file name, a URL link, an Alt tag, and a JavaScript message to each slice. URL links turn sliced images into navigation maps. Alt tags replace image slices in non-graphical browsers. The JavaScript message appears in a Web browser's status area. By default, the status area displays the assigned URL, but you can change it to display any message you like.



Specify settings, such as a URL and Alt tag, for each selected slice.

- Specify whether a slice is an image slice or a non-image slice. Non-image slices contain solid colors or HTML text.
- Resize or reposition a selected image slice by specifying different W/H dimensions or X/Y positions.
- Rearrange the stacking order of slices.
- View or hide slice information on canvas and in the Save For Web window. Slice information includes the slice grid and the identifying number assigned to each slice. (**Note** Like ImageReady, Photoshop automatically assigns every slice an identifying number starting in the upper-left corner of the image. Slices are automatically renumbered if you move them.)
- Use commands on a context-sensitive menu to affect slices directly.
- Generate a set of named image files and an HTML file with the table code necessary to reassemble the image after you export the optimized file.
- Produce high-quality HTML code that's ready to be copied into Adobe GoLive or another HTML editor. You control the code formatting, including indenting and whether tags are upper- or lowercase, so you can match HTML coding standards.
- Control how Photoshop handles exported image slices, including specifying what it names them and where it stores them.



Context-sensitive menu for adjusting slices in Photoshop



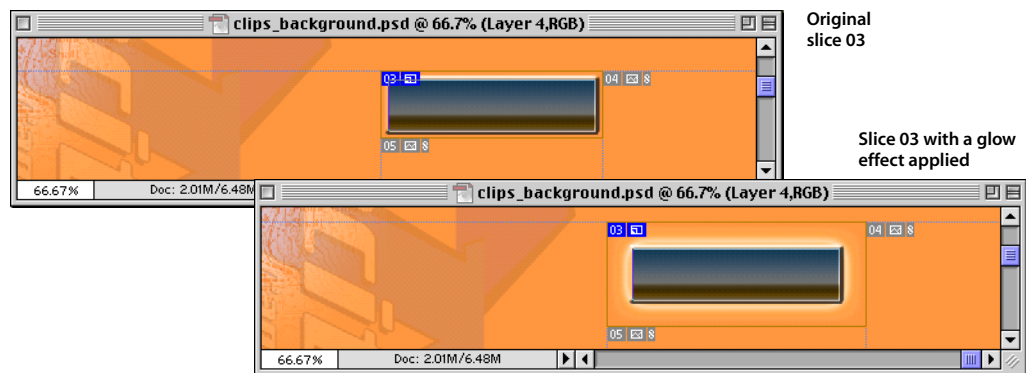
### Saved slice sets

ImageReady provides all of the slicing controls that are available in Photoshop, plus advanced controls for dividing, merging, duplicating, aligning, and linking slices. Now, with ImageReady 3.0, you can also save multiple slices in named sets, so you can quickly select, optimize, output, and even delete only those slices. Slice sets provide a more efficient way to work with slices—you could, for example, optimize and output only the image slices that contain interactive Web buttons for use in your Web pages.

Save multiple related slices in sets, so you can easily select, optimize, and output only those slices.

### Dynamic layer-based slices

Photoshop introduces a new way to slice images: Set up effects on selected layers and then let Photoshop or ImageReady generate layer-based slices for you. When you slice images this way, each slice is bound to the outermost pixels on each layer. If you then reposition or edit the content of the layer, the slice adjusts dynamically to accommodate these changes. This technique is particularly useful for generating precise slices for your JavaScript rollovers.



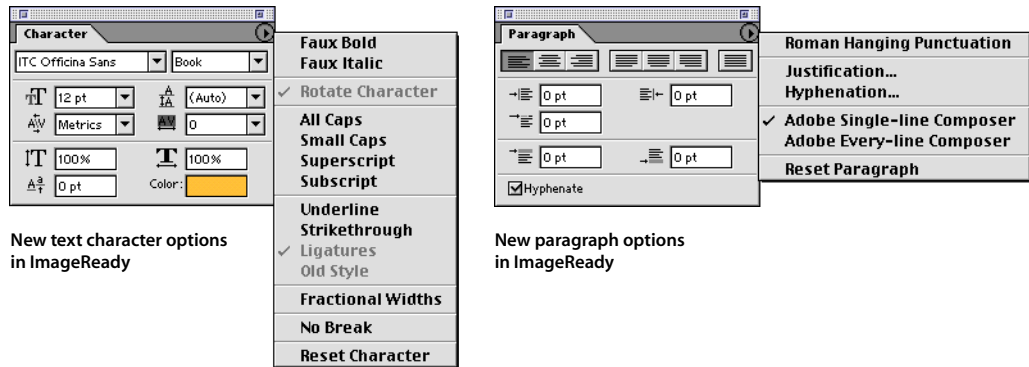
Use Photoshop or ImageReady to create dynamic layer-based slices for you. Then, if you add an effect, such as a glow, the boundaries of the slice will adjust automatically to accommodate the extra layer data (see slice 03 above).

### Tighter integration with Adobe ImageReady 3.0

Adobe Photoshop 6.0 integrates more tightly than ever with its advanced Web-production component, Adobe ImageReady 3.0. Now you can quickly jump back and forth between Photoshop and ImageReady because file-saving happens automatically in the background. This smooth transition—plus the ability to round-trip files flawlessly—ensures an efficient workflow. Like Photoshop 6.0, ImageReady 3.0 is designed to be more intuitive to use. For example, when you select one of the new vector shape tools in the ImageReady toolbox, all of the options that affect that tool's behavior appear in one accessible context-sensitive tool options bar.

ImageReady 3.0 also includes the new layer management controls, liquify command, and character and paragraph options offered in Photoshop 6.0. For instance, you can create hundreds of layers in any image and organize related layers in sets. And you can lock layers to prevent accidental editing. Alignment, leading, hyphenation, justification, and indent settings can be applied to any paragraph, plus you can specify space before and after paragraphs and produce typographically correct hanging punctuation. ImageReady also

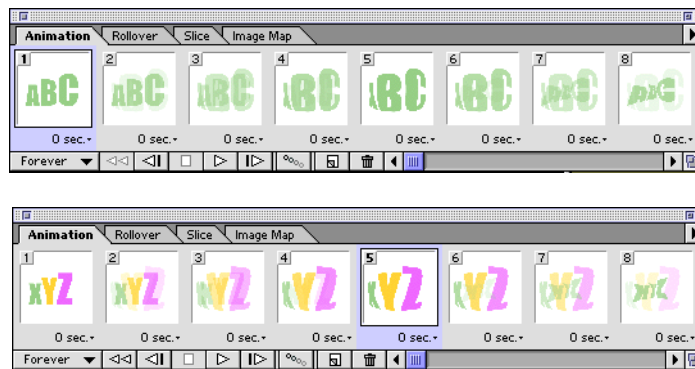
includes the new every-line composer for automatically setting optimal line breaks in a paragraph. Character-level controls let you apply color to each character, specify that a range of characters stay together (no break), and so on. You can even warp text in ImageReady 3.0 as freely as you would in Photoshop 6.0.



New text character options in ImageReady

New paragraph options in ImageReady

ImageReady 3.0 also offers new creative options for your animations and rollovers: You can animate warped text in ImageReady and even use a warped-text animation as a rollover. Plus, you can animate layer effects, such as satins and gradients, with eye-catching results. For more details about enhancements to Photoshop 6.0's interface, text controls, and layer management options, see "Master the power of Photoshop quickly" later in this document.

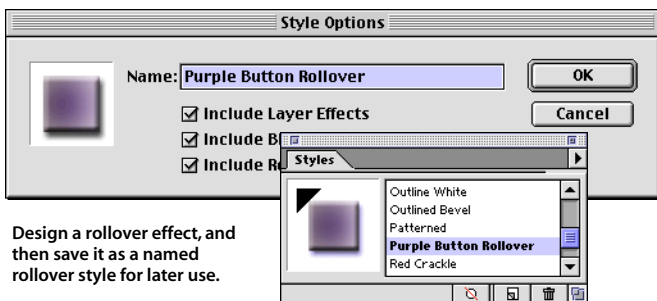


Create, style, and warp text. Then turn text into animations that warps in one direction and then another. Even tween between frames, so ImageReady can create intermediate warped steps.

Best of all, you can edit the text layers to use different characters, text attributes, and colors—without redoing the warp settings or the animation. ImageReady automatically handles the changes.

### Rollover styles

ImageReady makes it easy to design rollover effects without having to know how to write JavaScript code. It supports two types of rollover interactivity: You can design rollovers in which an image changes in a specific area when a particular mouse action occurs there, or secondary rollovers where a mouse action in one area causes something to happen in another area. A rollover can display simple effects, such as making a button glow; cause one image to swap out with another; play back animations; and much more. You can use standard mouse actions, such as mouse-down, mouse-click, and mouse-over, to trigger a rollover, or define custom actions to suit your Web design.



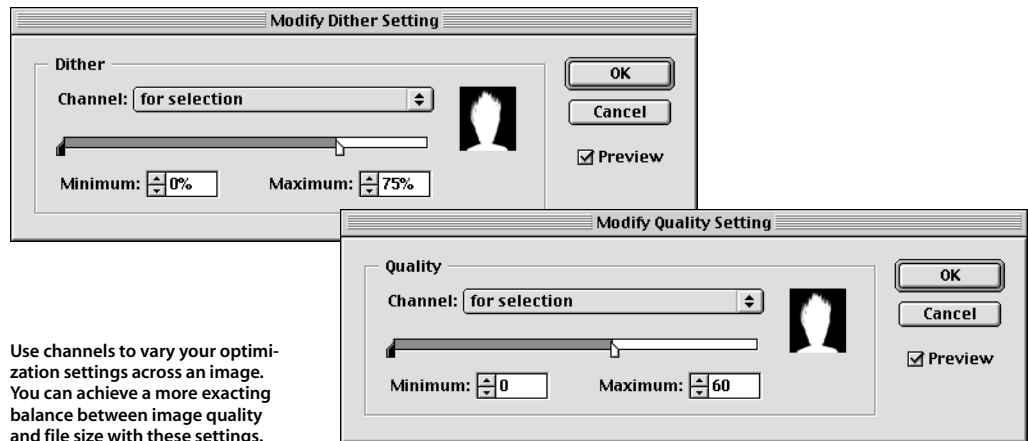
Design a rollover effect, and then save it as a named rollover style for later use.

Identify rollover styles by the little half-triangle in the upper-left corner.

ImageReady 3.0 introduces even more comprehensive rollover support: Rollover states can now share color palettes to avoid distracting color shifts. Dynamic layer-based slicing and expanded image map controls enhance rollover creation. You can even preview rollovers directly in ImageReady without having to launch a browser. Most importantly, ImageReady 3.0 automates rollover production with the introduction of rollover styles. When you design a rollover state that you want to use over again or share with colleagues, save it as a rollover style in the Styles palette. All of the attributes of the rollover, including its effects, slices, and states, are saved in the style. You can then apply the rollover style with a click of your mouse to quickly produce interactive Web graphics.

### Weighted optimization

With the new weighted optimization controls in Photoshop 6.0, you can use 8-bit alpha channels to set image optimization on a per pixel basis and smoothly vary compression settings across an image. This means that you can produce higher-quality results in critical image areas without having to slice up an image or handle the separate files that image slicing produces. What's more, you're no longer restricted to the rectangular areas produced by slicing, but can optimize an image using the natural contours of different image areas. Using channels, you can produce gradual variations in GIF dithering, lossy GIF settings, and JPEG compression. Weighted optimization controls also let you favor colors in selected image areas as you generate custom color palettes.



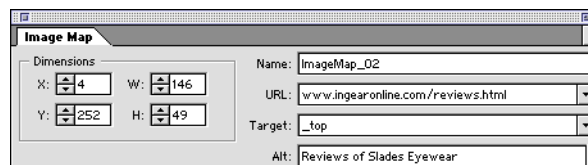
Use channels to vary your optimization settings across an image. You can achieve a more exacting balance between image quality and file size with these settings.



New image map tools in ImageReady

### Enhanced image maps

You can create navigational image maps by using the new rectangle, circle, and polygon image map tools in ImageReady to define hot spots and then associating URLs (Web addresses) with them. The image map tools produce rectangular, square, circular, and freeform hot spots in images (the polygon tool produces straight-edged freeform shapes). You can also set up dynamic layer-based image maps that adapt to changes in the layer content. Once you've set up these hot spots, the image map select tool is available for selecting and modifying them. For example, select a hot spot and then use the new Image Map palette to specify different attributes, such as a URL link and an Alt tag for display in non-graphical Web browsers. The Image Map palette also lets you control the precise size and location of your hot spots. Finally, use the slicing controls and Animation and Rollover palettes to assign rollovers to image map hot spots.



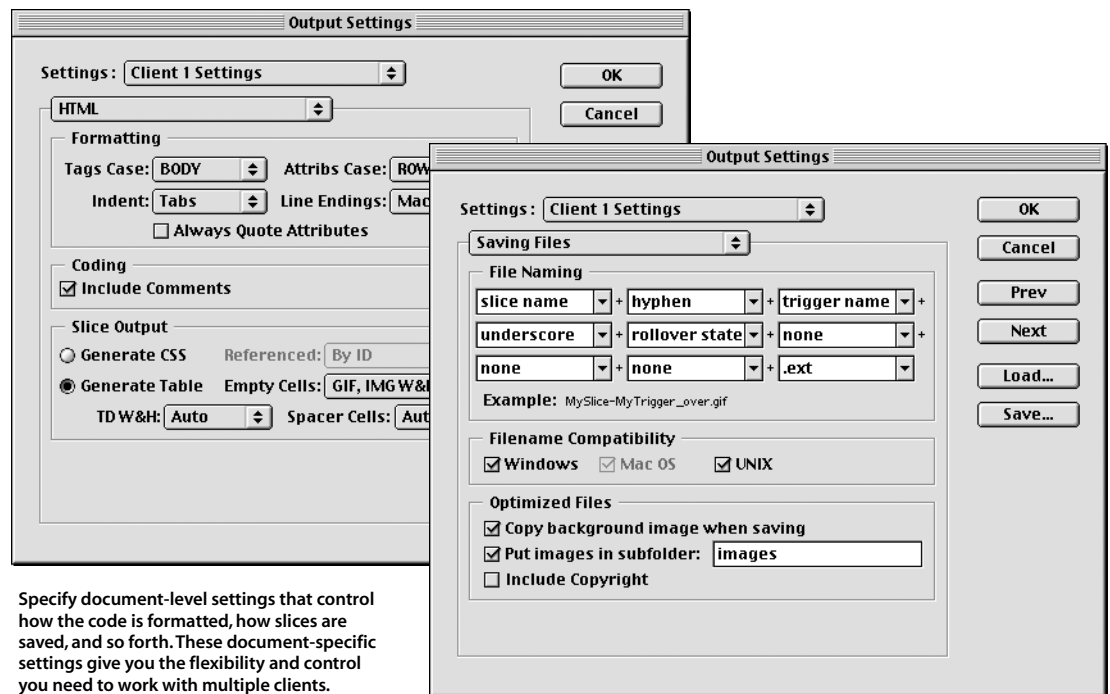
Define hot spots in your images. Then select each one and assign a URL, an Alt tag, and other settings.

### Tighter integration with Adobe GoLive 5.0

Adobe Photoshop 6.0 and Adobe GoLive 5.0 integrate tightly to support your Web production process. Now you can drop native Photoshop (PSD) files directly into GoLive without having to optimize them first in Photoshop or ImageReady. Instead, you can use the built-in image optimization tools in GoLive to perform those steps. Any URLs written by Photoshop or ImageReady are accessible in GoLive for management and editing. You can even update edited URLs in the original PSD file.

You can also set up and slice a Web-page template in Photoshop and then drop it directly into GoLive where you can continue working on it. If you resize an image slice, GoLive calls ImageReady to update the image, so pixelation doesn't occur. GoLive also goes back to the original Photoshop file to generate the final GIF or JPEG file for the Web page.

When exporting sliced images, Photoshop and ImageReady both generate a set of named image files and an HTML file with the table code necessary to reassemble the image. (Alternatively, you can save sliced image files as cascading style sheets.) The high-quality HTML code produced is ready to be copied into GoLive or another HTML editor. Document-based settings let you control how the code is formatted, how image slices are named, and where image slices are stored. You can, for example, control indenting and whether tags are upper- or lowercase to match the HTML coding standards of different clients. When exporting rollovers from ImageReady, select the Include GoLive Code option in the Save Optimized As dialog box for optimal results.



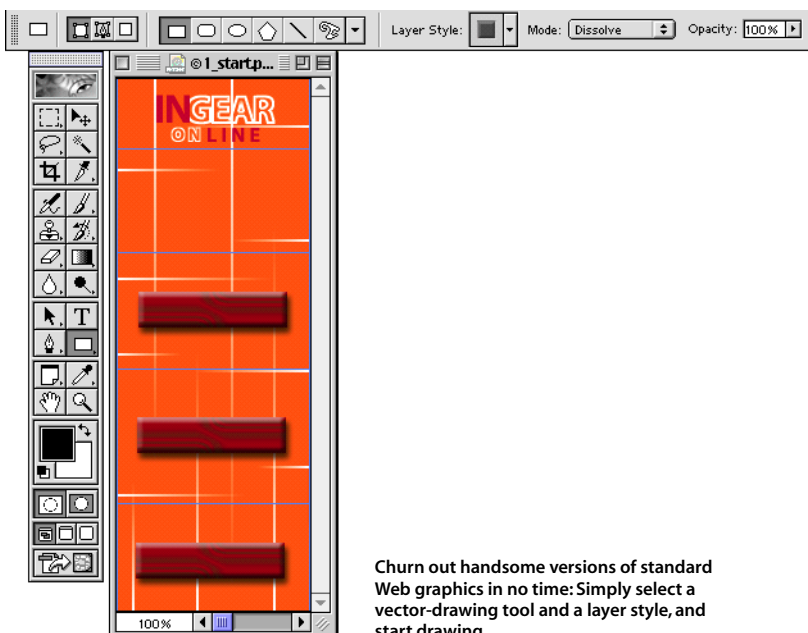
### Faster creation of Web graphics

The new vector-drawing tools in Photoshop 6.0 and ImageReady 3.0 (described in the previous section) open new opportunities for Web designers. Now you can design Web buttons and navigation bars, or incorporate vector objects into your Web images, more

easily than ever before. In addition, the new layer styles make it easy to create and store Web-oriented designs for on-going Web graphics production. For more details, see “Superb Vector Shape Support” and “Layer Styles” earlier in this document.

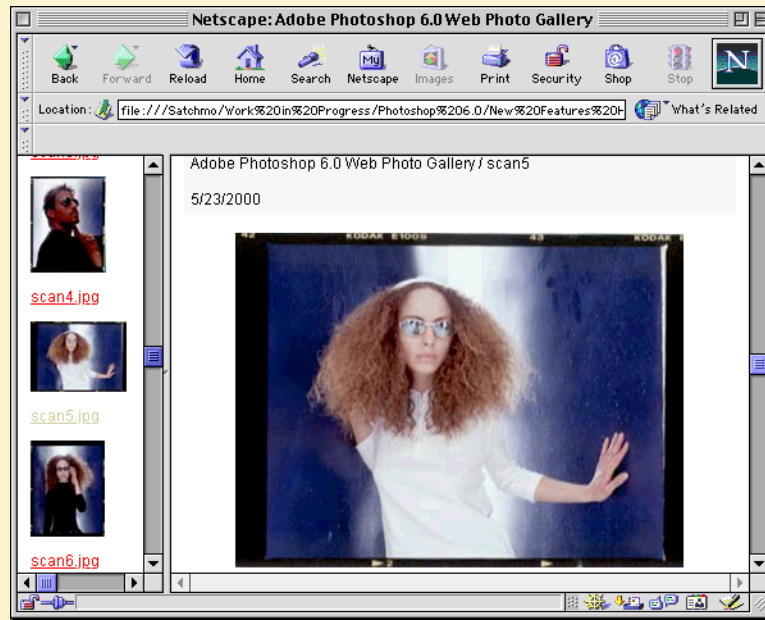
### Additional preview controls

ImageReady 3.0 includes additional preview controls to streamline your production process. Now you can click a button in the ImageReady toolbox to instantly preview the current file in your default Web browser. You can also preview rollover effects in ImageReady without launching a Web browser.



### Enhanced contact sheets

Photoshop 6.0 includes a number of changes to make contact sheets more flexible. You can now define the font size for labels on a contact sheet, choose among a variety of customizable templates with and without HTML frames for the Web photo gallery, and select from predefined picture package templates that support different page sizes. In addition, the picture package no longer adds borders around images, so the final image sizes meet expectations.



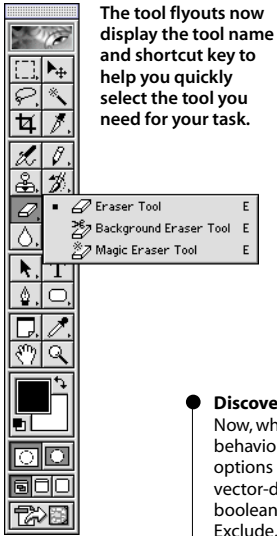
Instantly generate a frame-based Web gallery of images using the customizable Web contact sheet templates in Photoshop 6.0.

### Master the power of Photoshop quickly

As the world-standard image-editing solution, Adobe Photoshop enjoys an unmatched reputation for innovation, power, precision, and stability. Today, its appeal extends beyond graphic design and into disciplines such as medical research, law enforcement, zoology, and mathematics, where people are finding new ways to apply sophisticated image-editing technology. This new customer landscape presents the challenge of how to make the power of Photoshop more accessible to more people, while honoring the investment existing users have already made in learning it.

Adobe Photoshop 6.0 rises to this challenge with a more intuitive interface design that helps you get up to speed faster and dive into features more deeply. It includes hundreds of enhancements that reflect customer feedback, workflow analysis, and years of Adobe's own experience with the product. These enhancements have been designed so that longtime users can assimilate the changes at a glance, enjoy newfound efficiencies, and even explore features they've never tried before. And new Photoshop users will find that power and ease really can go hand in hand.

This section describes some of the key enhancements in Photoshop 6.0. It also introduces new ease-of-use features, such as the context-sensitive tool options bar, on-canvas entry of text, expanded layer management controls, and Preset Manager. For complete information about Photoshop 6.0's refinements, see the *Complete List of Photoshop 6.0 Enhancements* document.



The tool flyouts now display the tool name and shortcut key to help you quickly select the tool you need for your task.

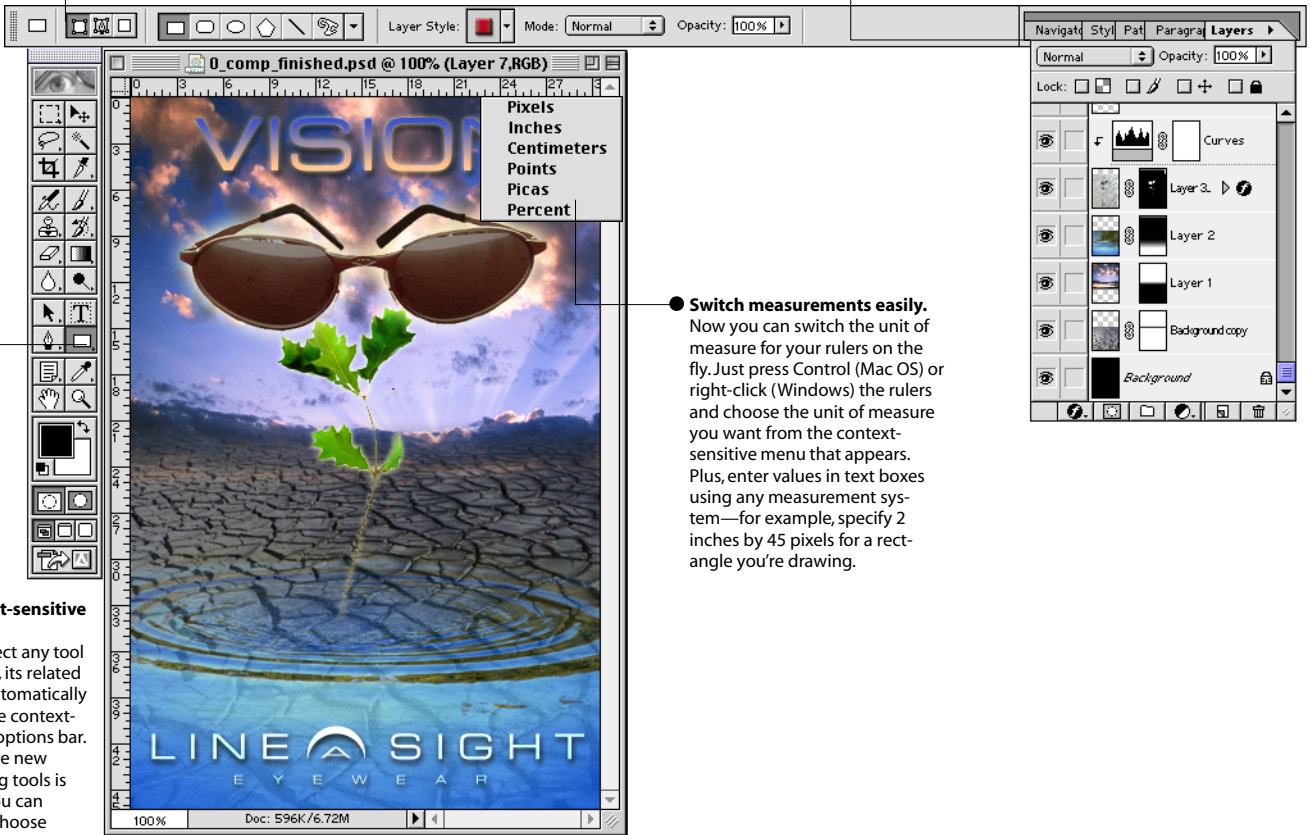
### Streamlined interface

Adobe Photoshop 6.0 introduces numerous features designed to make it easier and more efficient to use its powerful features. For example, you can organize frequently used palettes in a new palette well where they are tucked out of your way but immediately accessible. A context-sensitive tool options bar provides more direct and intuitive access to all of the options that control what you do with each tool. On the Windows platform, the Open dialog box simplifies image selection with browsable thumbnails. The global setting for your measurement system no longer prevents you from switching systems on the fly to make discrete changes. An overview of these and other changes appears on the following pages: Browse here to see the next generation of digital image editing in action.

● **Discover the full power of Photoshop at your fingertips.**  
 Now, when you select a tool, all of the options that control its behavior are easily accessible in a context-sensitive tool options bar. For example, when you're working with the new vector-drawing or the selection tools, you'll have access to boolean operations, such as Add, Subtract, Intersect, and Exclude, which were previously available only by keyboard shortcut. And you can easily enter numeric values for the free transform tool, or access the bounding box and specify alignment options for the move and path component selection tools. The context-sensitive tool options bar is dockable to the top or bottom of your screen, or you can let it float anywhere on your screen.

● **Organize palettes in the convenient palette well.**  
 With Photoshop 6.0, you can store the palettes you use most often in a palette well, where they are readily available when you need them but out of your way when you're focused on a task. When you want to use a palette, click its tab and the options immediately appear. Click away again and the palette tucks up out of sight. (Note that the palette well is visible only when the tool options bar is positioned at the top or bottom of the screen and your screen resolution is higher than 800x600.)

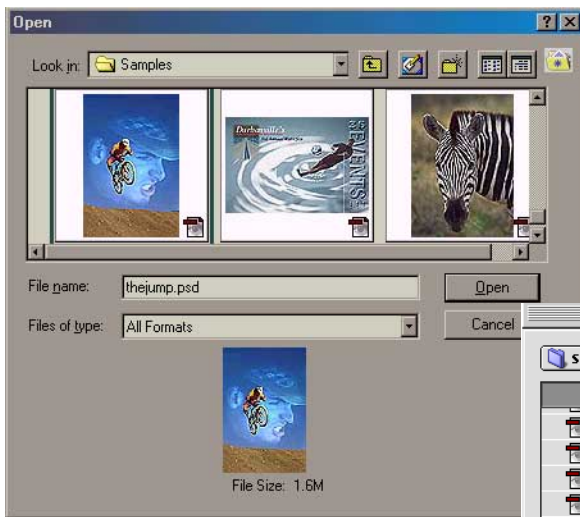
● **Select context-sensitive tools.**  
 When you select any tool in the toolbox, its related options are automatically available in the context-sensitive tool options bar. Here one of the new vector-drawing tools is selected, so you can immediately choose whether to create a vector shape, add a vector mask to a layer, or paint pixels. Plus, you can select a layer style that will be applied as you draw the vector shape.



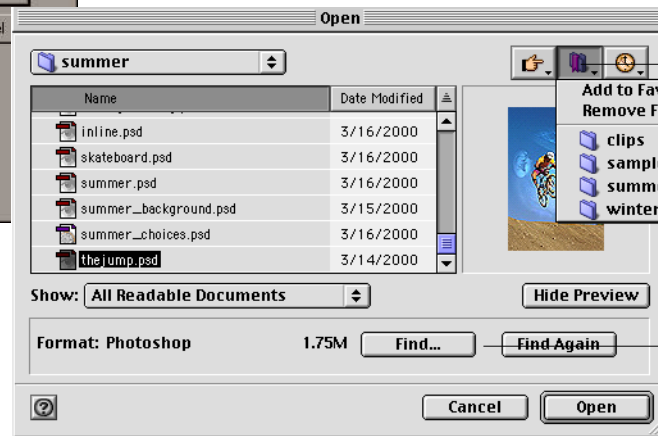
● **Switch measurements easily.**  
 Now you can switch the unit of measure for your rulers on the fly. Just press Control (Mac OS) or right-click (Windows) the rulers and choose the unit of measure you want from the context-sensitive menu that appears. Plus, enter values in text boxes using any measurement system—for example, specify 2 inches by 45 pixels for a rectangle you're drawing.

### Faster access to images

Now you can locate and open images more quickly using Photoshop 6.0. You can, for example, find your most recently opened files on the File > Open Recent submenu. (You also set the default for how many files Photoshop lists here.) Photoshop remembers where you last opened or saved files, so you can more easily access them in default locations. The Mac OS and Windows versions of the Open dialog box also feature platform-specific changes that streamline your file organization. For example, the Open dialog box for the Mac OS lets you open multiple files, specify favorite folder locations, and find files more easily.



Browse image thumbnails in the Open dialog box.



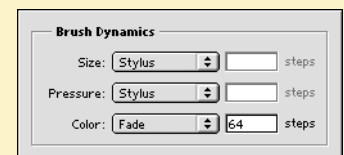
Designate commonly used folder as favorites, so you can return to them quickly.

Click Find to launch Sherlock, which offers extensive file and folder search capabilities. Then drag the find result you want onto the Open dialog box to select it.

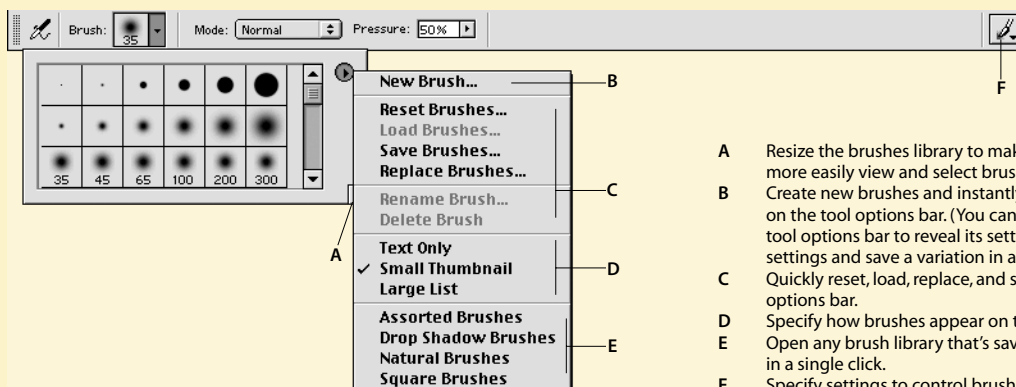
### A streamlined interface for brushes

In previous versions of Photoshop, brush options appeared in two different palettes: the Paintbrush Options palette where you set blending modes, opacity, fade steps, and other options, and the Brushes palette where you selected default brushes to use. Now, in Photoshop 6.0, these options are all consolidated in one place—the context-sensitive tool options bar. When you select the paintbrush tool, these options appear immediately, so it's more intuitive what settings are available and how they interact. Non-tablet users even have immediate access to pressure and fade settings that control brush dynamics.

You can also edit brushes on the fly through a context-sensitive menu, adding them directly to the brushes library on the tool options bar. Finally, the context-sensitive toolbar and the Preset Manager give you one-click access to any brush libraries in the Brushes folder, so it's easy to load more brushes any time you need them without hunting through your hard drive. (For details, see "Preset Manager" later in this document.)



Brush dynamics options



- A Resize the brushes library to make it wider or longer, so you can more easily view and select brushes.
- B Create new brushes and instantly add them to the brush library on the tool options bar. (You can also click a selected brush in the tool options bar to reveal its settings, and then adjust those settings and save a variation in a single click.)
- C Quickly reset, load, replace, and save brushes from the tool options bar.
- D Specify how brushes appear on the tool options bar.
- E Open any brush library that's saved in the Presets\Brushes folder in a single click.
- F Specify settings to control brush dynamics.



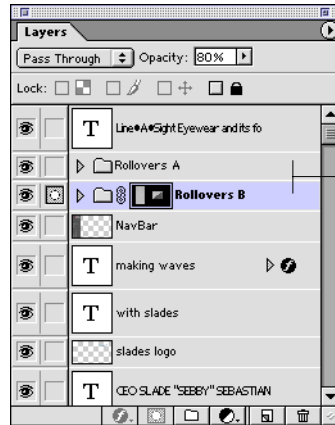
### Additional usability enhancements

Here's a quick look at a selection of other enhancements that will make it easier to work in Photoshop 6.0:

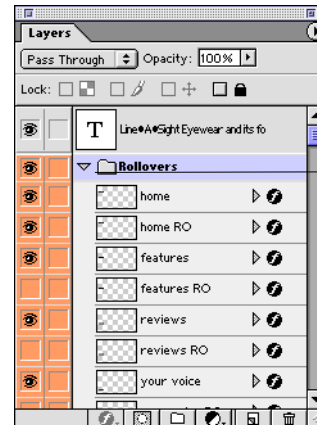
- The Save As and Save A Copy commands have been merged, so it's easier to save your Photoshop files to any file format.
- Double-clicking or dragging non-image files, such as swatches, brushes, actions, and layer styles, onto the application quickly loads them for use.
- Choosing View > New Guide lets you automatically place a guide at a specified location.
- TWAIN device access is simplified—it's no longer necessary to specify the TWAIN source.
- Extended menu support means that you can load more plug-ins at once. In addition, you can set a preference that automatically directs Photoshop to load or not load the plug-ins stored in the Additional Plug-ins directory.
- Pressing Command+H or Ctrl+H toggles the visibility of the options set on the View > Show submenu.
- Clicking once lets you quickly find out why a current tool shows the Cancel cursor.
- Maximum settings have been raised significantly for a variety of effects, such as Emboss, Mosaic, Contract, Expand, Smooth, Defringe, and Border. You can also work with larger layer effect sizes. For example, you can now offset shadows as much as 30,000 pixels.
- Photoshop 6.0 lets you check files in and out of WebDAV servers, so you can share files in a collaborative environment without fear of accidentally overwriting files or losing file updates.

### Enhanced layer management

Layers are more flexible than ever in Photoshop 6.0. Now you can create hundreds of layers in any image to help arrange different elements in an intricate composition (previously you were limited to 99 layers). Plus, you can organize those layers into sets to keep better track of related parts. You can then toggle the visibility of layer sets, hiding or showing them as you work; you can apply layer masks and layer clipping paths to layer sets; and you can specify a layer set's opacity.



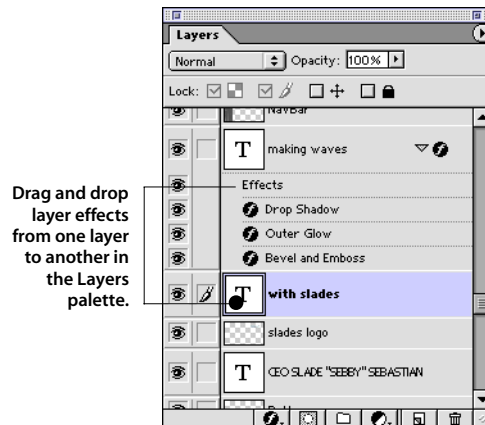
Save layers in sets to track them more easily. Apply layer clipping paths, layer masks, opacity, and other settings to affect a set of layers.



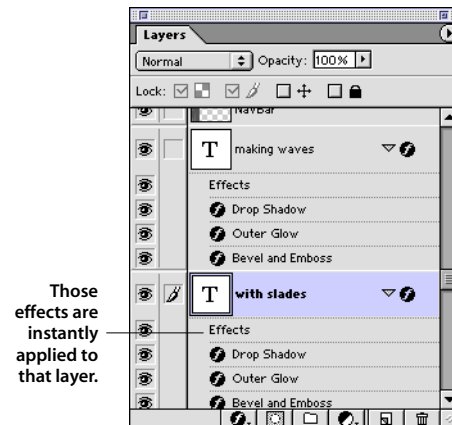
Open a set to reveal the layers it contains. Note the color coding, which you can apply to visually identify associated layers.

Color-coding layers in the Layers palette lets you quickly identify layer relationships. Once your layers are set the way you want, you can lock them to prevent accidental edits to image data, transparency settings, and layer position. Or, lock layers before sending them out for colleagues and clients to review, so you don't have to worry about unexpected changes.

The enhanced Layers palette also helps you handle layer effects more efficiently. If you assign a layer effect to one layer and want to reuse it on another, just drag and drop it in the Layers palette list. All of the settings are preserved and instantly applied to the target layer. Deleting layer effects is just as easy: simply drag the effect to the Layers palette trash bin. Double-clicking a layer effect in the palette list opens the new Layer Style dialog box where you can adjust the settings.



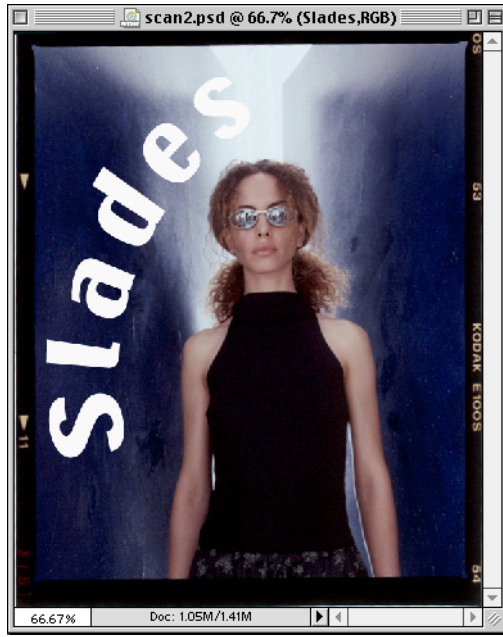
Drag and drop layer effects from one layer to another in the Layers palette.



Those effects are instantly applied to that layer.

### On-canvas entry of editable text

Here's a new feature certain to please all Photoshop users: You can enter, style, and edit text directly on canvas. Now you can see how your text looks in relation to your image without toggling back and forth in the Type Tool dialog box. If you rotate, scale, or skew your text on-screen, the text remains editable. Text can also be converted to editable outlines for use as masks or other vector elements if the fonts applied have outline data available. When your text and image are ready, output them as crisp vector text and image data in PDF files or directly to a PostScript printer or file. A PDF file can then be processed for high-end output using Adobe Acrobat InProduction or other Acrobat prepress plug-ins.



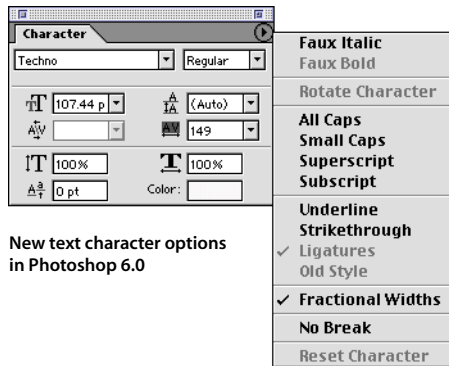
Enter and style vector text directly on canvas.



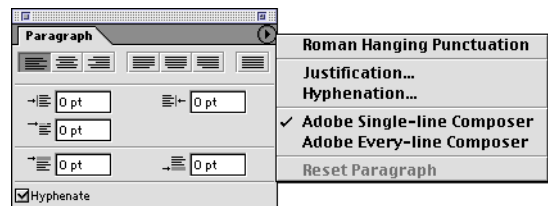
The text remains editable no matter how you change it.

### Expanded text options

Extensive new text options are available for styling words and paragraphs. For example, you can freely twist and warp text, which remains completely editable. Text options now appear in Paragraph and Character palettes, which work similarly to those in Adobe Illustrator and Adobe InDesign. New paragraph options let you specify alignment, autoleading, space before and after, hanging punctuation, and left-, right-, and first-line indents on a per-paragraph basis. Photoshop fully supports paragraph justification with options for setting minimum, maximum, and desired values for word spacing, letter spacing, and glyph scaling.



New text character options in Photoshop 6.0



New paragraph options in Photoshop 6.0

The English version of Photoshop also provides professional-quality hyphenation settings with control over the minimum word size, minimum number of characters before and after a hyphen, number of consecutive hyphens, and hyphenation zone. Photoshop even supports the next generation of Adobe composition engines, offering you a choice of the every-line and single-line composers. The every-line composer sets multiple lines of text in relation to each other to ensure optimal line breaks, while the single-line composer handles one line of text at a time.

With the new character controls, you can apply color on a per-character basis, scale characters vertically and horizontally, set baseline shift, and automatically produce ligatures and oldstyle figures. Plus, Photoshop fully supports OpenType fonts and their related features, such as all caps, small caps, superscript, and subscript. (Photoshop produces faux versions of these text options for non-OpenType fonts.) A new no-break option controls whether or not a range of characters wrap as a single word.

Photoshop also includes extensive CJK (Chinese, Japanese, Korean) formatting controls, including: Tsume for manual kerning, Tate-chu-yoko for setting horizontal text within vertical text, Kinsoku shori for setting word breaks, Burasagari for hanging punctuation, and Mojikumi for auto-kerning and justification. ImageReady 3.0 supports all of the new text options in Photoshop 6.0, except for CJK formatting.



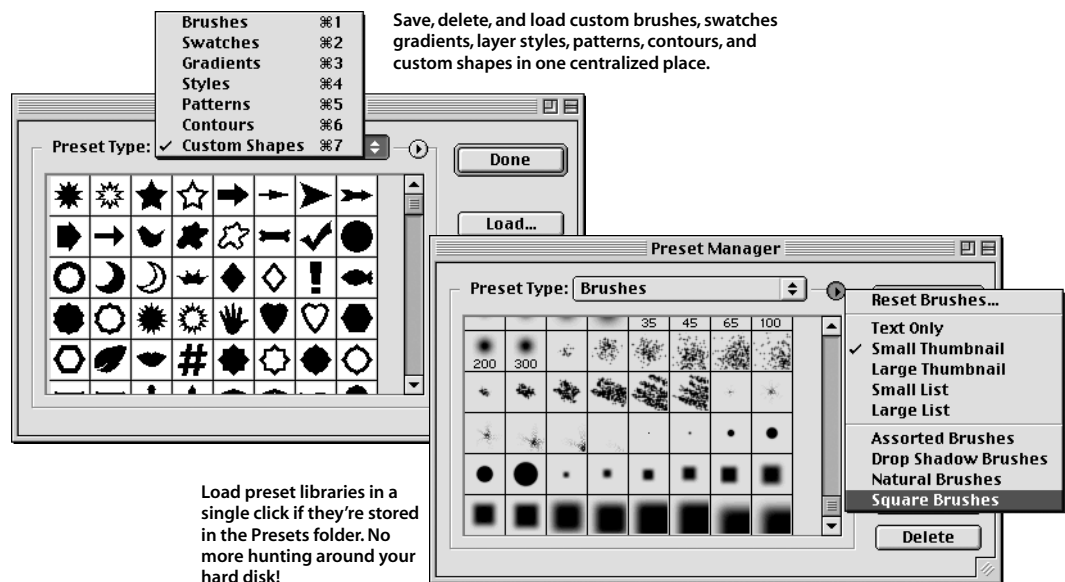
Twist and pull text using extensive built-in warping controls. Apply color on a per-character basis.



Then freely edit the warped and colored text.

### Preset Manager

The new Preset Manager centralizes management of your custom brushes, gradients, shapes, contours, patterns, and layer styles, and it offers instant access to the extensive libraries of presets included with Photoshop 6.0. When you create your own custom presets, you can easily save them in library files using the Preset Manager. Those libraries can then be loaded at any time or shared with colleagues to streamline their creative work.

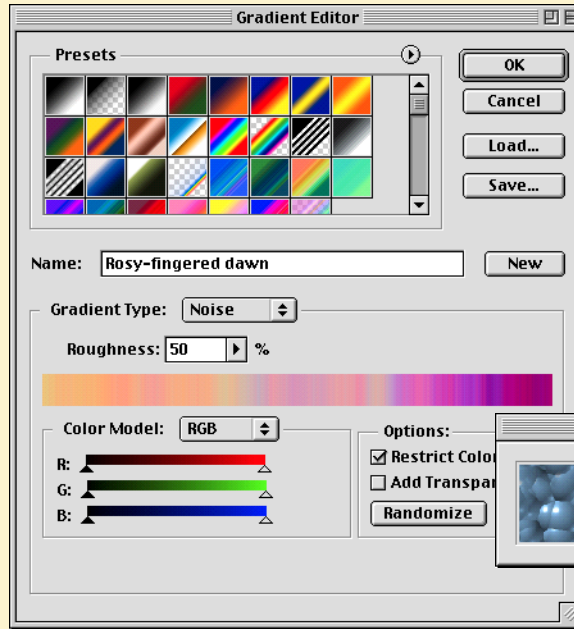


Loading preset libraries takes only a click of the mouse because those libraries appear on a menu in the Preset Manager if your library files are stored in their default locations in the application folder—for example, in the Photoshop 6.0\Presets\Brushes folder. (In addition, preset libraries are available for similar one-click loading anywhere they are used, including the context-sensitive tool options bar, the Styles palette, the Gradient Editor dialog box, and other locations.)

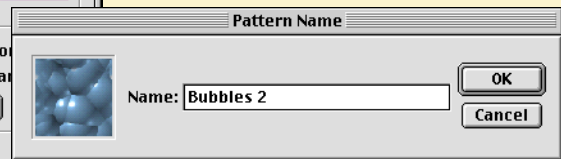
The Preset Manager is resizable, so you can easily scan the content you're loading. Plus, the Preset Manager menu lets you choose how to view the content—in large or small thumbnails, in large or small text lists with thumbnails, or as a text-only list. You can also double-click any brush, swatch, pattern, or other preset in the Preset Manager, and assign it a name. For example, you could build a set of swatches for a Web project, and assign names that tell you and your colleagues where to use them—such as “Background for logo” or “Main page nav bar.” Those names would then appear in any text list. Once you open a library with the Preset Manager, it's available for use in appropriate places, such as the context-sensitive tool options bar, the Layer Style dialog box, and the content layer dialog boxes.

### Creating gradient and pattern presets

New interface enhancements streamline the creation of certain presets, such as gradients and patterns. For example, you can now edit gradients on the fly to create new variations without affecting the original gradient, and then save those variations for future use. The Gradient Editor is resizable for easier viewing of complex gradients, and offers interactive color and opacity stops, smoothness controls, and new options for defining noise-based gradients.

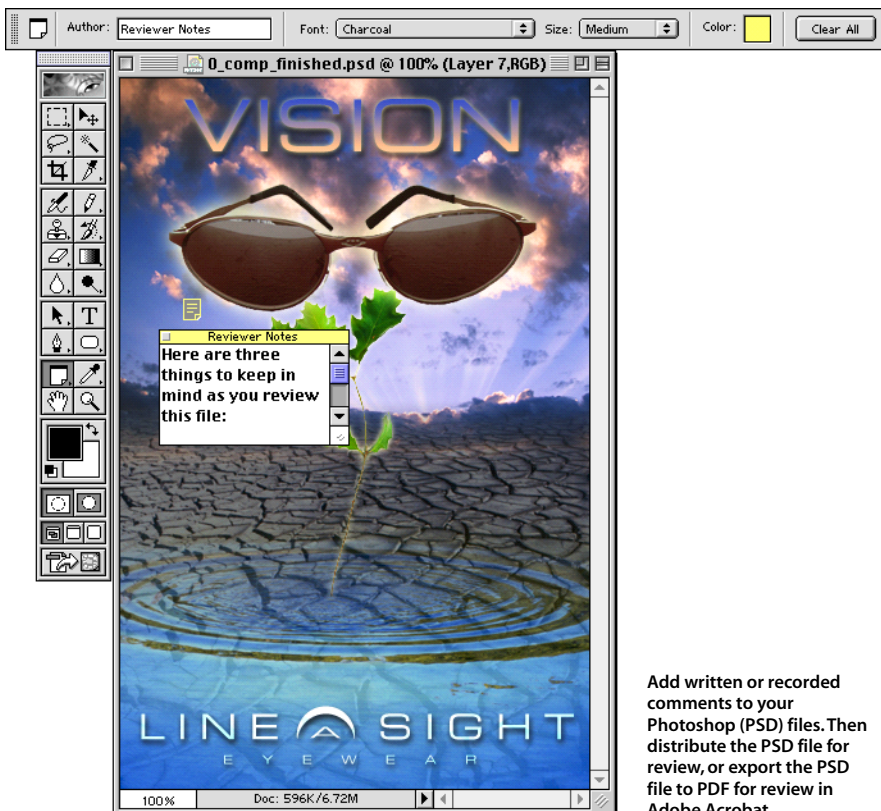


It's also easier to define and save patterns for later use (beyond the immediate Photoshop session). Photoshop prompts you for a name when you define a pattern and then includes the pattern on the context-sensitive tool options bar and in appropriate dialog boxes. If you define a pattern without a selection, Photoshop uses the entire document as the pattern and assigns the document's name to it.



Easily save patterns for on-going use.

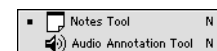
Design noise-based gradients.



Add written or recorded comments to your Photoshop (PSD) files. Then distribute the PSD file for review, or export the PSD file to PDF for review in Adobe Acrobat.

### Annotation tools

It's often challenging to communicate to clients and colleagues all of the necessary information for a smooth review process. That's why Photoshop 6.0 is incorporating annotation tools that let you embed written design notes or recorded voice comments directly in your files. For example, you could now organize design options on different image layers, and then append notes to those layers explaining how to review them or providing other background information. The annotated Photoshop (PSD) or TIFF file could then be sent for review to anyone who has Photoshop 6.0. Alternatively, you could save the file as a PDF with the annotations and layers preserved and send it out to be reviewed in Adobe Acrobat or Acrobat Reader. Your colleagues and clients would then append their own comments to the PSD, TIFF, or PDF file and send them back to you for quick compilation.



New annotation tools in Photoshop 6.0

## Updated color management

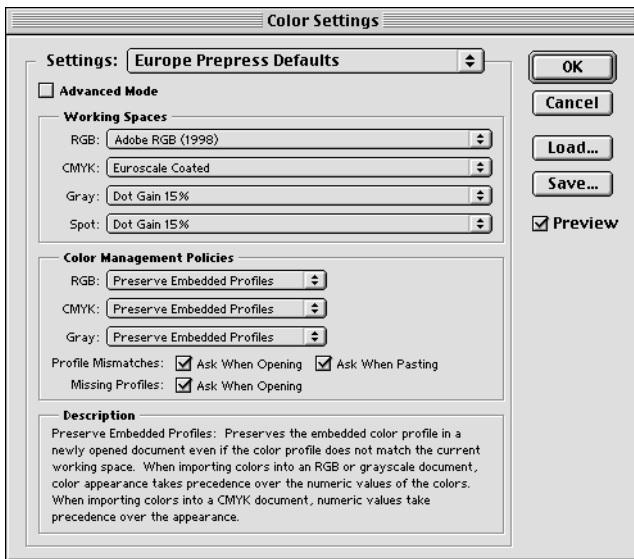
Adobe Photoshop 6.0 introduces less restrictive color-management controls, which streamline configuration of a device-independent, color-managed workflow. These new controls are provided by the Adobe Color Engine (ACE), the latest version of Adobe's core color-management technology. All of the color management controls now appear in one dialog box for easy access, plus they come equipped with detailed built-in Help. You can choose between advanced and standard modes depending on how much control you

want to exercise. Photoshop 6.0 provides preset workflows, so it's easy to switch among standard U.S. (SWOP), European, and Japanese prepress settings and even among video and Web graphics defaults. Or, you can set up your own custom workflow and save the settings for later use.

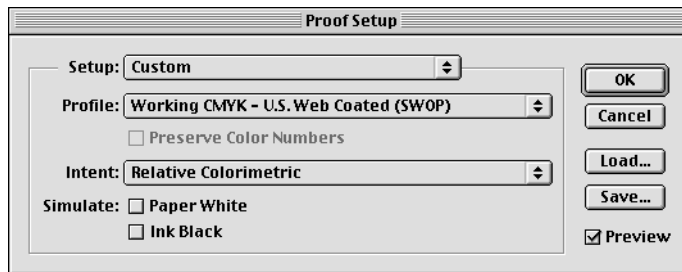
Photoshop 6.0 lets you set color management policies in advance or decide every time you open a new file whether to discard, preserve, or convert a color profile. It even offers better feedback on the ICC profiles contained in the files you're opening or saving. In addition, document-level controls mean that you do not have to convert files to the current color working space. You'll also find it easy to turn color management off for those times when a color-managed workflow isn't desirable.

The new ACE technology offers better integration with Adobe Illustrator 9.0, which includes the same engine, as well as with other upcoming Adobe publishing products. This integration makes color management easier to learn and ensures consistent color as you move files between Photoshop 6.0 and Illustrator 9.0. For example, Photoshop and Illustrator now automatically detect when their color management settings

vary and prompt you to synchronize them to ensure better color fidelity. Photoshop 6.0 also includes built-in soft-proofing controls for accurately previewing CMYK and RGB images on-screen or on a desktop color printer.



Set up a color-managed workflow using less restrictive controls. Check the **Advanced** option to exercise even more control over your color management workflow.



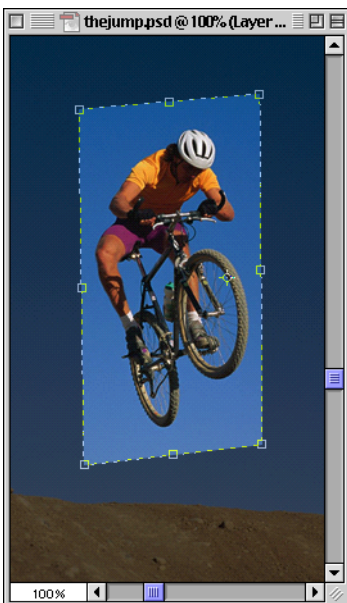
Use the Proof Setup controls to accurately preview RGB and CMYK images on-screen.

## Enhanced crop tool

The crop tool now appears at the top level of the toolbox—instead of under the marquee selection tools—where it's more readily available to help you crop scanned images. In addition, the crop tool offers enhancements that make it more intuitive to use. For example, when you define a crop area, it now dims the area outside of the crop box, so you can visually check the crop and make any quick adjustments before you complete the action.

The crop tool can also be used to transform the perspective of a cropped area, so you can repair a poorly scanned image. To eliminate perspective effects, you simply define a nonrectangular region. Photoshop automatically calculates the final cropped rectangular area based on the size and aspect ratio of the original picture. In addition, the Image > Crop and Image > Trim commands are enhanced, so you can work with arbitrary selections including feathered ones; choose whether to hide or discard the cropped area; and perform other cropping tasks.

Eliminate perspective effects by defining a nonrectangular crop area. Photoshop automatically determines the final rectangular cropped area. Note that the area outside the crop is dimmed to help you check and fine-tune what you're cropping.



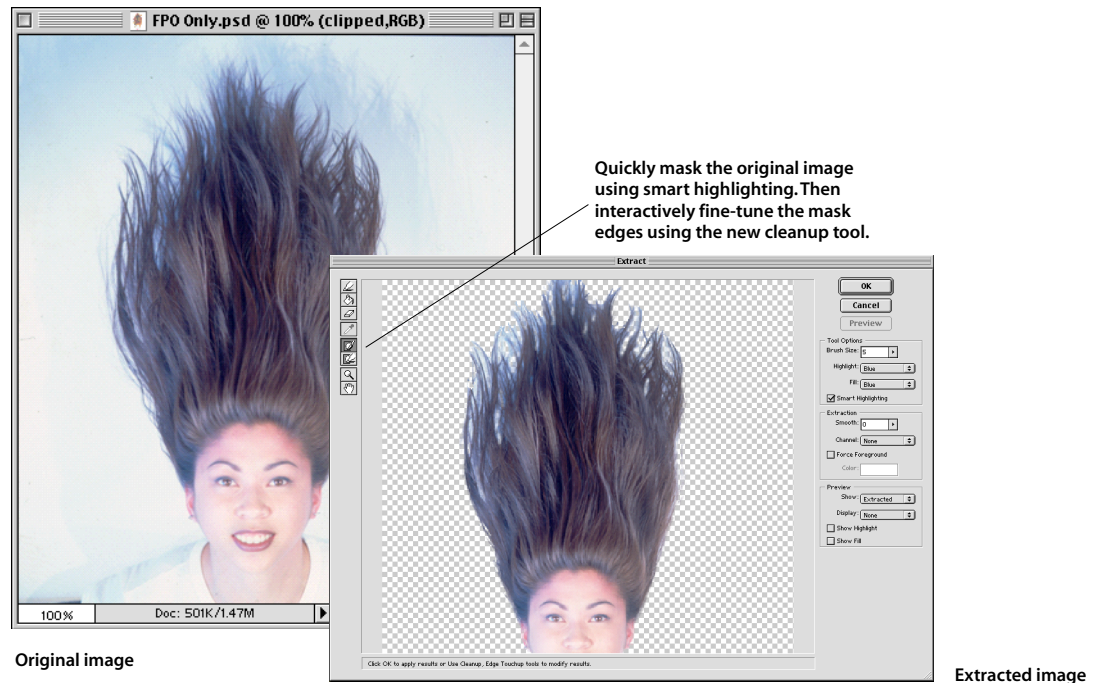
**Extra Value in the Box**

Here's an overview of the extra value you'll find in the Adobe Photoshop 6.0 software package.

- Adobe Photoshop software plus these other useful programs:
  - Adobe ImageReady 3.0 for advanced Web-production tasks
  - Adobe Acrobat Reader 4.0 software for viewing Portable Document Format (PDF) files
  - The Adobe SVG Viewer plug-in for viewing SVG pages from different Web browsers
  - Tryout versions of other Adobe software
  - A variety of sample plug-ins from third-party developers
- *Adobe Photoshop 6.0 User Guide*
- Adobe Photoshop 6.0 Quick Reference Card
- An extensive new HTML Help system, plus single-click access to a rich selection of content on Adobe.com, including Adobe corporate news, Photoshop tips & tricks, preset libraries, plug-ins, and more
- 100 royalty-free stock photos

**Revised Extract Image command**

First introduced in version 5.5, the Extract Image command provides accessible tools for masking intricate, hard-to-define edges, which previously required painstaking manual work to mask. Photoshop 6.0 now delivers an enhanced version of this command with new smart-highlighting, mask edge, and mask cleanup tools that can help you achieve refined results. The process is simple: When you choose Image > Extract and select the Smart Highlighting option, built-in edge detection technology in Photoshop helps you define the image area you want to extract. After filling the area, you can click Preview to check the extraction or click OK to see it directly in Photoshop. In Preview mode, the mask edge and mask cleanup tools are available for you to smooth edges as necessary, automatically filling or erasing areas to produce the best results.

**Expanded support for batch-processing files with actions**

Photoshop 6.0 simplifies the batch-processing of files with revised options for opening and renaming files. It also makes more tasks accessible to actions, such as specifying tool options, print and page setup parameters, and brush selections. You can even use sound annotations in your actions. In addition, you can automatically turn a currently selected action in the Actions palette into a droplet for batch operations. Then, to trigger a batch action, all you have to do is drag a folder of images onto the droplet. You can even share droplets across platforms to streamline batch production in a mixed-system workgroup. When a batch operation saves out files, it can include the original document names, the date, serial numbers and letters, file extensions, and other attributes in the final file names.

**Print preview**

Photoshop 6.0 helps you avoid printing surprises: Now you can open the Print Options dialog box to view the image as it will appear in print, including printer's marks such as crop marks, registration marks, captions, and labels. Plus, you can specify halftone screens and transfer functions. You can then drag the preview image to resize or reposition it on the page. Color management options are accessible from the revised Print Options dialog box, so you can view the assigned ICC profile, choose an ICC profile for your proofing device, and change the ICC profile for your output space. The Include Vector Data option controls whether or not vector data is output with your image data.

**Expanded File Format Support**

Photoshop 6.0 now preserves layers in exported TIFF and PDF files and supports more compression options, including JPEG and ZIP, in its TIFF files. Photoshop also supports additional file formats, including PBM, Wavefront RLA, and Alias PIX. A streamlined dialog box makes it easier to import PhotoCD images.

**Tip**

Photoshop 6.0 also provides extensive soft-proofing controls for proofing RGB and CMYK images on-screen or on a desktop color printer before you produce your final output. For details, see "Updated color management" earlier in this document.

**System Requirements\*****Mac OS**

- PowerPC® processor
- Mac OS software version 8.5, 8.6, or 9.0
- 64 MB of RAM\* (with Virtual Memory on)
- 125 MB of available hard-disk space (after install)
- Color monitor with 256-color (8-bit) or greater video card
- 800x600 or greater monitor resolution
- CD-ROM drive

**Windows**

- Intel® Pentium® class processor
- Microsoft® Windows 98, Windows 2000, or Windows NT 4.0†
- 64 MB of RAM\*
- 125 MB of available hard-disk space (after install)
- Color monitor with 256-color (8-bit) or greater video card
- 800x600 or greater monitor resolution
- CD-ROM drive

\* 128 MB required to run Photoshop and ImageReady concurrently

† NT Service Pack 4, 5, or 6a required

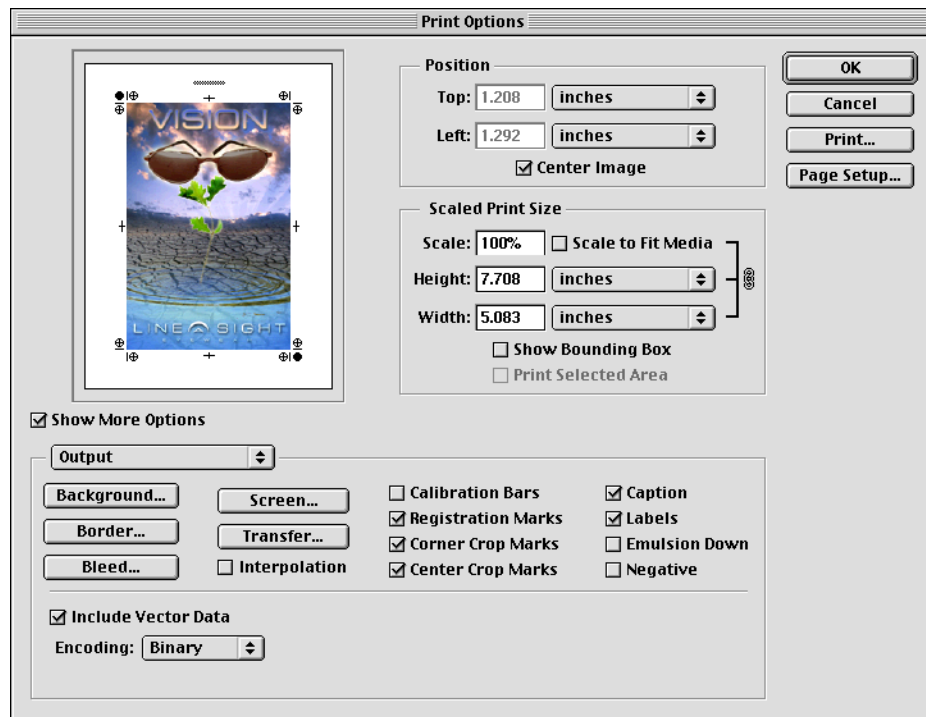
**Estimated Street Price**

\$609

**Expected Ship Date**

3rd Quarter 2000

\* System requirements are subject to change prior to the product shipping.



Specify printer's marks and preview how they will look in the final printed output before you print.

**Availability and pricing**

In the United States and Canada, Adobe Photoshop 6.0 for Mac OS 8.5, 8.6, and 9.0, Windows 98, Windows NT 4.0, and Windows 2000 is expected to ship in the third quarter of 2000. The estimated street price for Adobe Photoshop is \$609 (U.S.) for all platforms. Registered users of earlier versions of Adobe Photoshop can upgrade to version 6.0 for only \$199 (U.S.). This upgrade pricing does not apply to Limited Edition versions. All retail and upgrade versions are available only on CD-ROM.

French, German, and Japanese versions are expected to be available after the initial release. Information about other language versions, as well as all pricing, upgrade, and support policies for other countries, will be announced separately.

Customers can call Adobe Systems at 800-492-3623 or visit the Adobe Web site at [www.adobe.com](http://www.adobe.com) for more information.

**About Adobe Systems**

Founded in 1982, Adobe Systems Incorporated ([www.adobe.com](http://www.adobe.com)) builds award-winning software solutions for Web and print publishing. Its graphic design, imaging, dynamic media, and authoring tools enable customers to create, publish, and deliver visually rich content for various types of media. Headquartered in San Jose, California, Adobe is the fourth largest U.S.-based personal software company, with annual revenues exceeding \$1 billion.