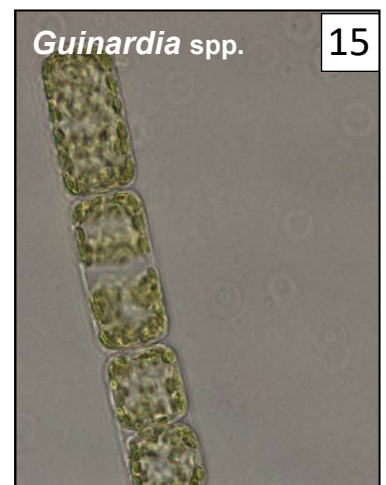
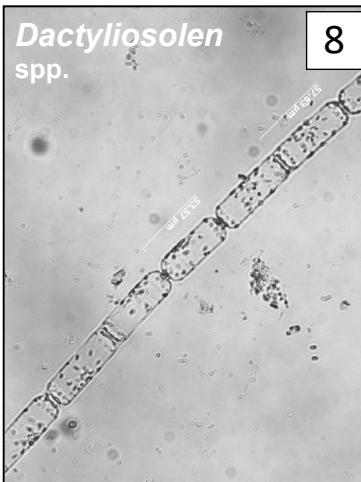
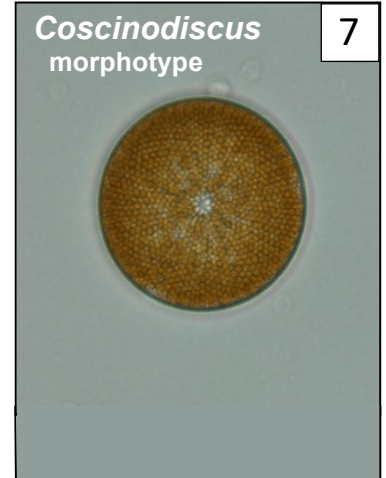
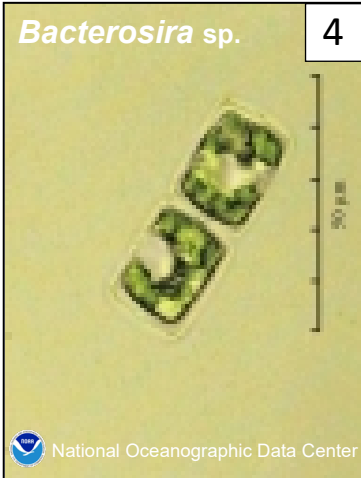
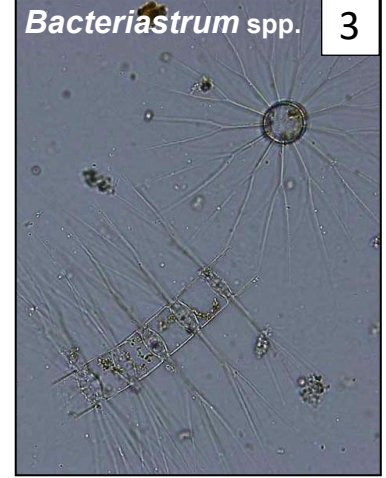
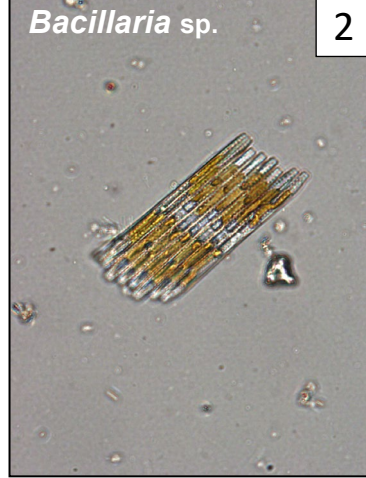


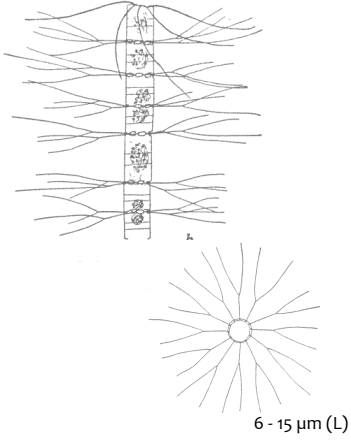
SOUTHEAST ID SHEET

DIATOMS SHEET #1

PICTURES TAKE AT 400X UNLESS NOTED

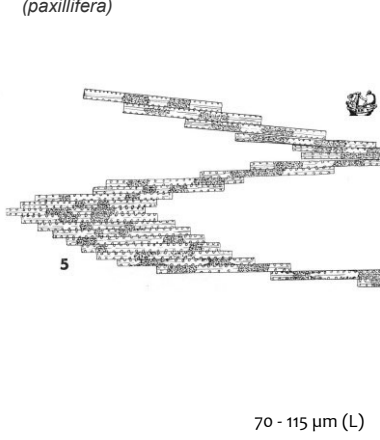


Bacteriastrum spp. 3



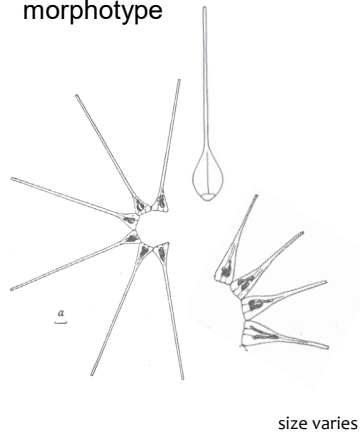
6 - 15 µm (L)

Bacillaria sp. 2
(*paxillifera*)



70 - 115 µm (L)

Asterionellopsis morphotype 1



size varies

SOUTHEAST ID SHEET

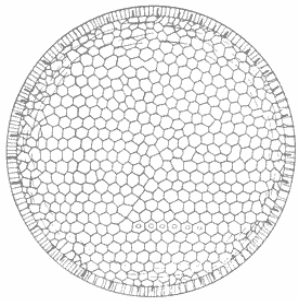
DIATOMS SHEET #1

This ID sheet is designed to aid NOAA Phytoplankton Monitoring Network (PMN) citizen scientists on basic phytoplankton identification.

Only taxa used by the PMN are listed. Not all phytoplankton collected can be identified with this sheet.

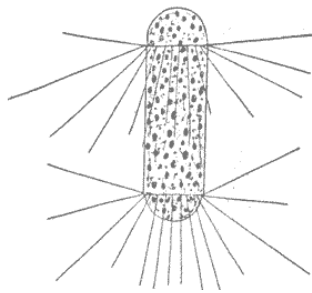
Photography: S. Morton
Illustrations: Cupp, E.E., 1943.
Tomas, C. (Ed.), 1997.

Coscinodiscus morphotype 7



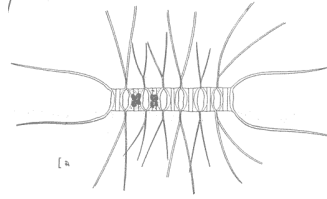
30 - 500 µm (W)

Corethron spp. 6

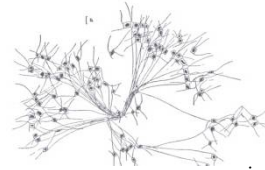


20-150 µm (L)

Chaetoceros spp. 5

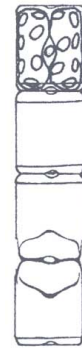


Chaetoceros socialis



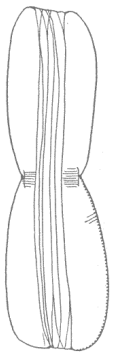
size varies

Bacterosira sp. 4
(*bathyomphala*)



50 µm (L)

Entomoneis spp. 11



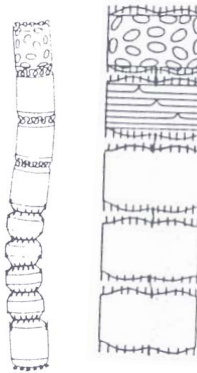
20 - 30 µm (L)

Ditylum spp. 10



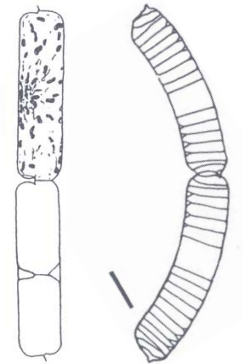
50 - 130 µm (L)

Detonula spp. 9



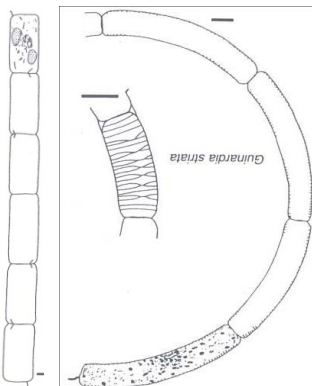
40 - 80 µm (L)

Dactyliosolen spp. 8



8 - 70 µm (L)

Guinardia spp. 15



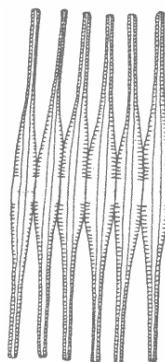
50 - 250 µm (L)

Grammatophora spp. 14



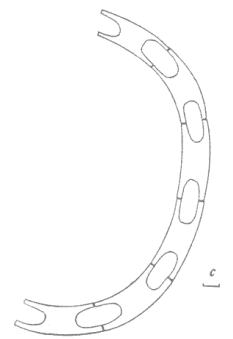
50 - 70 µm (L)

Fragilariopsis spp. 13



35 - 125 µm (L)

Eucampia spp. 12

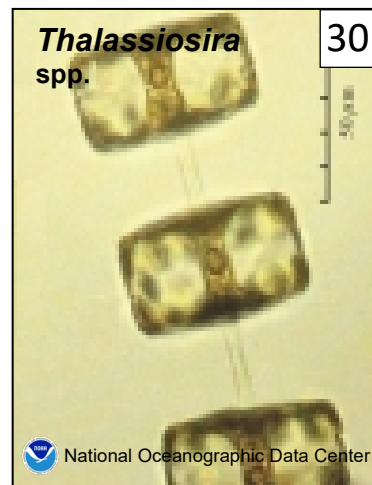
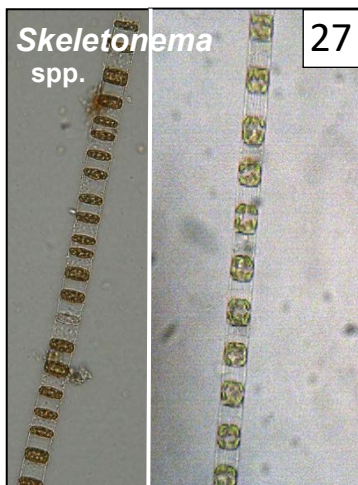
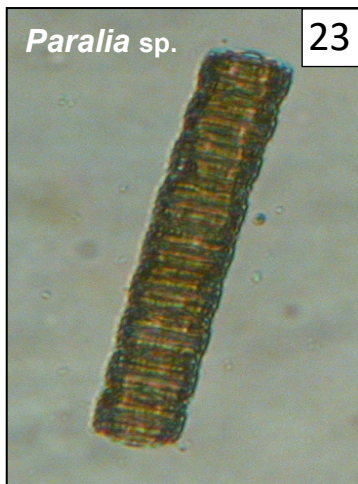
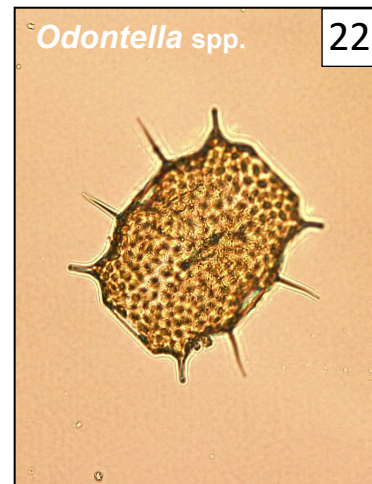


10 - 60 µm (W)

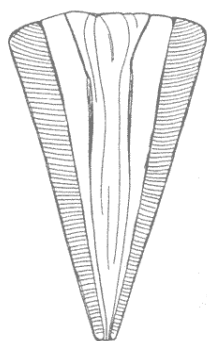
SOUTHEAST
ID SHEET

DIATOMS
SHEET #2

PICTURES TAKE AT 400x UNLESS NOTED



Licmophora spp. 18



40 - 60 µm (L)

Leptocylindrus spp. 17



5-16 µm (L)

Hemiaulus spp. 16



15-35 µm (L)

SOUTHEAST ID SHEET

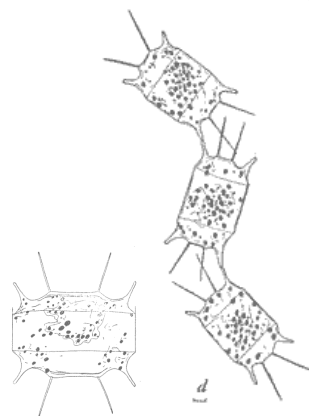
DIATOMS SHEET #2

This ID sheet is designed to aid NOAA Phytoplankton Monitoring Network (PMN) citizen scientists on basic phytoplankton identification.

Only taxa used by the PMN are listed. Not all phytoplankton collected can be identified with this sheet.

Photography: S. Morton
Illustrations: Cupp, E.E., 1943.
Tomas, C. (Ed.), 1997.

Odontella spp. 22



10 - 160 µm (L)

Nitzschia morphotype 21



50 - 125 µm (L)

Navicula morphotype 20



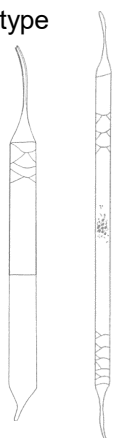
64 - 160 µm (L)

Melosira spp. 19



10-40 µm (L)

Rhizosolenia morphotype 26



size varies

Pseudo-nitzschia spp. 25
Domoic Acid – ASP



40 - 175 µm (L)

Pleurosigma morphotype 24



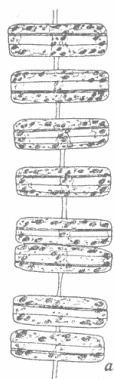
100 - 300 µm (L)

Paralia sp. 23
(*sulcata*)



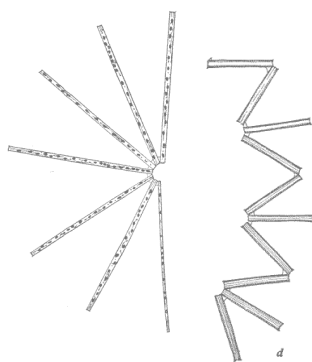
45 - 95 µm (L)

Thalassiosira spp. 30



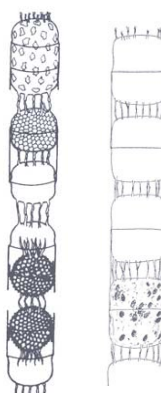
15 - 100 µm (L)

Thalassionema spp. 29



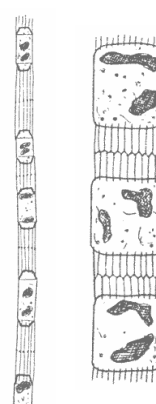
10 - 200 µm (L)

Stephanopyxis spp. 28



25- 70 µm (L)

Skeletonema sp. 27



2 - 25 µm (L)

