

PrimeStone Solutions



PrimeStone®

Empowering



PrimeStone: Our Company

- Privately held company founded in 1990
- North American office in Alpharetta, Georgia
- Over 200 customers in 27 countries (utilities + end users)
- We develop software solutions for power utilities for:
 - Data collection (remote and on-site)
 - Data Analytics
 - Data management
 - Alarms + notifications
 - Energy balance
 - Integration with other corporate applications
- Fully focused on developing our software, the PrimeEnergy suite since 1995



PrimeStone®



PrimeStone: NA Customer Base

USA

- Southern Company
- Georgia Power
- Alabama Power
- Eversource Energy (Formerly NU)
- Black Hills Power
- Chicopee Electric
- Electric Cities of Georgia
- ITC Transco
- Entergy Nuclear
- GRDA
- Marietta Power & Water
- Montauk Energy
- UGI Electric Services
- KAMO
- Bryan Texas Utilities
- Accenture
- The Irvine Company
- Pedernales Electric Coop
- SWPA
- First Point Energy
- Oakdale Electric Coop
- Michigan Power Agency
- IMPA
- City of Richland
- Idaho Falls Power
- Applied Metering
- LEP Systems

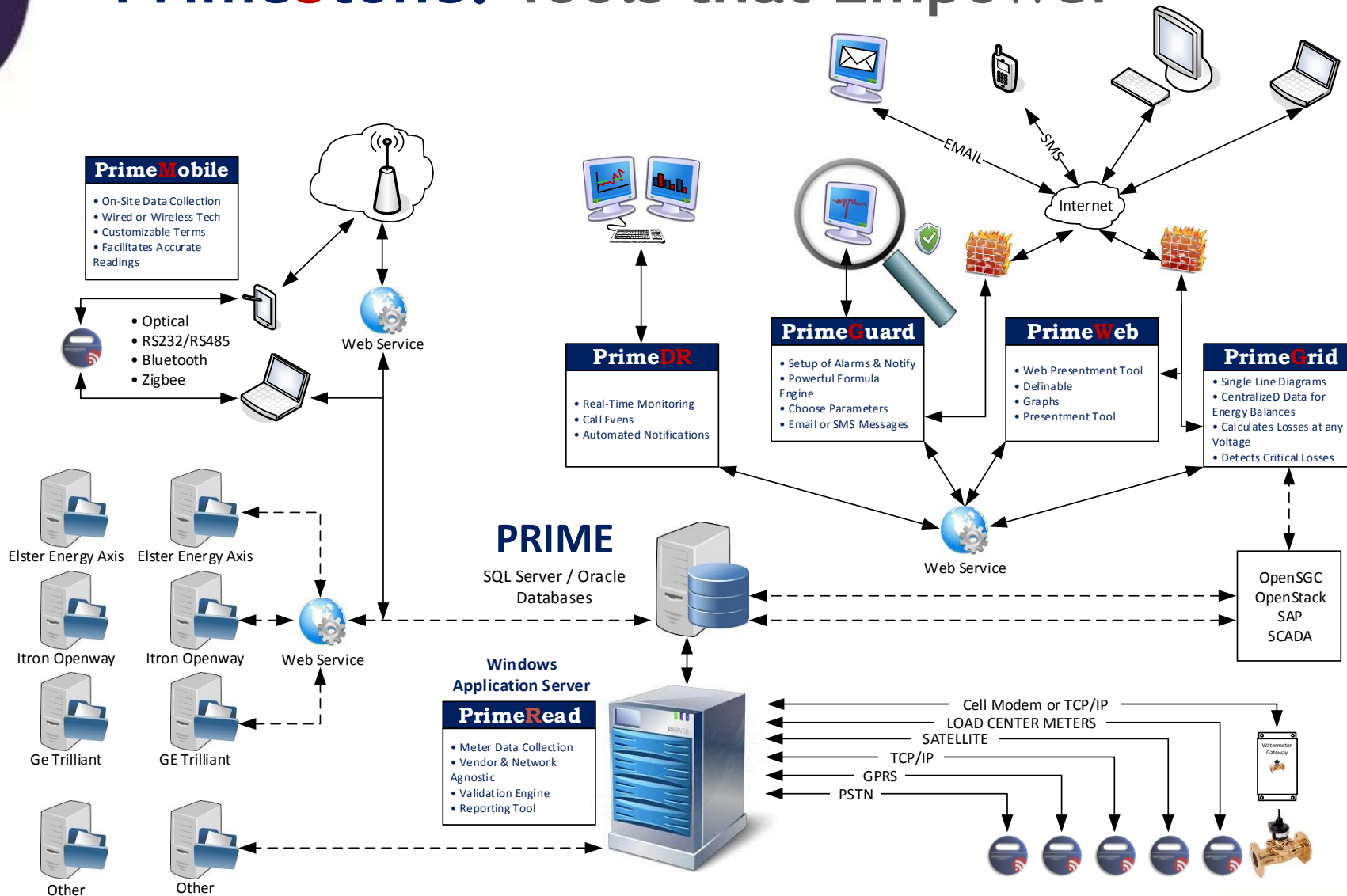
Canada

- EnerCare Connections
- Oakville Hydroelectric
- Maritime Electric
- EnerSource Hydroelectric Mississauga
- Toronto Hydro

Mexico

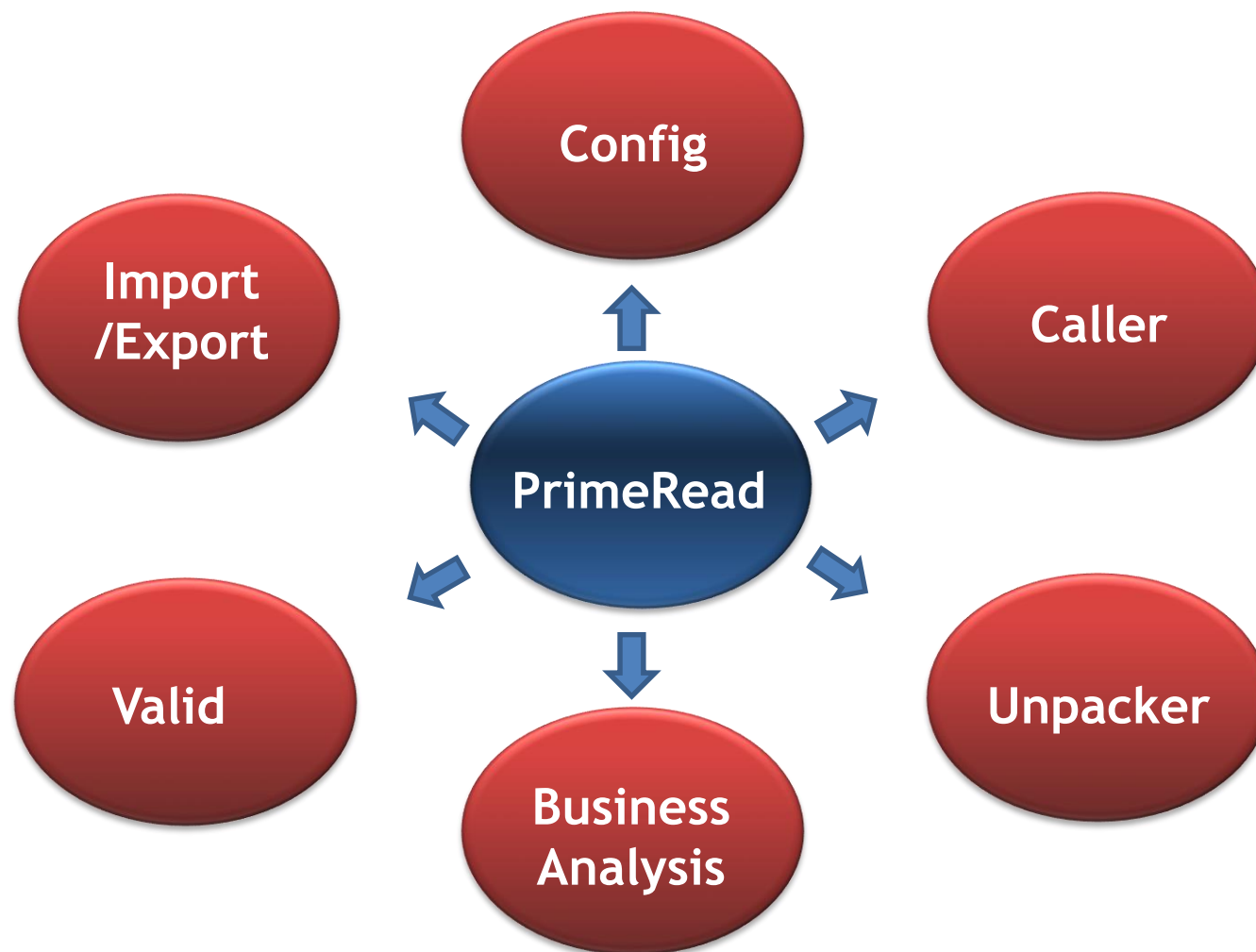
- CFE (10 divisions)

PrimeStone: Tools that Empower





PrimeRead: Modules





PrimeRead: Key Benefits

- Automatic and unattended data collection
- If it can be read, we can read it
- Multi-vendor + multi-network = flexibility
- VEE - Validation Estimation Editing
- Supports over 200 meter models
- Independence from the meter manufacturers
- 30+ canned reports and option to customize
- Supports the most popular databases:
 - Oracle
 - SQL Server
- Data engine collects all meter information:
 - Load profile (mass memory)
 - Registers
 - Events
 - Power quality
- Simple license model based on meter points
- Multiple commodities (electric, gas, and water)
- Supports multiple network topologies
- Interface with other corporate applications + AMI headend systems or standalone headend



PrimeRead: Meter Vendor Agnostic (representative sample)

Support for 200+ meter models.. If it's readable, we can read it.

- **Elster – ABB**
 - Alpha I
 - Alpha II or Plus
 - Alpha 3
 - AIN
 - EAGas
 - EAWater
 - Garnet
 - REX – MAS Residential (XML)
 - IEC A-1xxx series
- **Actaris**
 - SL-7000, 6000, INDIGO & 5000
- **American Innovations**
- **Arteche DM9000 Series**
- **Cewe**
 - Prometer
 - Prometer W
- **Cirwatt B & IEC 870-5-102**
- **Complant**
 - CCE16
 - General DL/T 645 & SSC16
 - Multiusers 8 SSC16, 9+1 DL/T 645 & 9+1 DL/T 645 Generation
 - SLD16
- **Concentrador CIF-RMQP**
- **Datapro**
 - Datapower
- **DCU-DLMS Kalkitech**
- **Eagle Research AE5000**
- **EDMI**
 - MK10A, D & E
 - MK6, 6E, 6N & Genius
- **Electroindustries**
 - Nexus 1250 DNP and Modbus
 - Nexus 1270 DNP and Modbus
 - Nexus 1500 Series / Modbus
 - Shark 200 / Modbus
- **ELO**
 - 2106, 2113, 2180SE & 2180SP
- **EMH**
 - Elgama, Elgama EPQS & LZQJ
- **E-MON / MeterSmart Device**
- **Enerlux T Aldana**
- **EXA**
 - Biphasic
 - CP
 - CS
 - Single Phase
 - Three Phase
- **First Point**
 - TDS-2/TDS-4M
- **Exelec Totalogger M3P10**
- **General Electric**
 - DR-87
 - Phase 3
 - KV
 - KV2
 - KV2c
 - Phase 3
- **Genus**
- **HPL**
- **Idosde Tecun DTS949**
- **Intech HXE34**
- **Iskra**
 - MT174
 - MT831
 - MT831 Custom
 - MT851
 - MT860S
 - Poreg 4P
- **Landis & Toubro**



PrimeRead: Vendor Agnostic (representative sample)

Support for 200+ meter models.. If it's readable, we can read it.

- **Landis & Gyr**
 - Altimus
 - ANSI S4
 - AXRS4
 - Dialog ZMD
 - Dialog ZMG
 - Focus AX
 - Qualigrid ZMQ
 - RXRS4
 - RXS4
 - SAGA1000
 - SAGA1000 International
 - SAGA1000 MultiPort
 - ZMC
 - ZMD IEC 870-5-102
 - ZMG IEC 870-5-102
 - ZMU220C
 - Maxsys 2510, Elite
- **Mercor**
 - ECAT
 - Mini-AT
 - Mini-MAX
- **Mercury Instruments Gas Device**
- **Metretek AE6000 EFCV**
- **MTC Epsilon**
- **Nansen Spectrum**
- **Power Measurement / PowerLogic / Square D / Schneider Electric**
 - ION7300 series
 - ION7550, ION7650
 - ION8800 Series
 - ION8300, ION8400, ION8500
 - ION8600A, ION8600B, ION8500C
 - PM710 / PM870 / PM1200
- **Power Sentinel**
 - 1133A
- **Premier PRI**
- **Prodelec Tipo 1**
- **Quad Logic**
 - MiniCloset-5 Metering Point
 - S-20
 - Scan Transponder-5
- **Remote Terminal Unit**
- **Satec**
 - EM920
 - PM175
- **Schweitzer**
 - SEL734
 - SEL735
- **Scientific Columbus – Ametek**
 - Jem10
 - JemStar
- **Schlumberger - Itron**
 - Datastar Recorder
 - Fulcrum SL 320 / SQ-400
 - Q-1000
 - Quantum (Q100 & Q200 series)
 - Quantum QDIP
 - Sentinel
 - Vectron
- **Siemens**
 - Maxsys 2410 / 2510
 - Quad 4 Plus (w/o Superboard)
 - Quad 4 Plus (Superboard)
- **Sentry Recorder 200**
- **Transdata**
 - Mark V
 - SSR-5000
- **Triacta Powerhawk**
- **ZIV**
- **Standard Protocols**
 - IEC 61107 / 870-5-102
 - DLMS
 - ANSI C12.19 / C12.22



PrimeRead: Networking Agnostic

- **Landlines (POTS)**
- **Line Simulators**
- **Line splitters**
- **Cellular (TDMA, CDMA & GSM)**
- **Cellular digital CDMA 1X-RTT, GPRS**
 - Fixed IPs
 - Dynamic IPs
- **CDPD (point to point and TCP/IP)**
- **Satellite (TCP/IP)**
- **Power line carrier (PLC)**
- **Optical Probes**
 - ANSI
 - IEC
- **Radios**
 - Utilinet – Cellnet
 - TCP/IP
- **Serial**
 - RS232 (Direct)
 - RS485 (Multidrop)
 - Daisy Chain (master-slave)
- **Ethernet**
 - Modbus
- **X25**
- **Wireless**
 - BlueTooth
 - Zigbee



PrimeRead: Validation, Estimation and Editing

The Big Four:

Validation check	Description
Interval Tolerance Check	Counts missing readings
Time Tolerance Check	Compares the meter's clock vs the workstation's clock
Profile Tolerance Check	Sum of load profile readings \approx Delta registers
Zero Tolerance Check	Counts number of zero values per channel per day



PrimeRead: Validation, Estimation and Editing

Validation check	Description
Overflow Tolerance Check	Detects readings above a user defined threshold
Underflow Tolerance Check	Detects readings below a user defined threshold
Consecutive Zero Tolerance Check	Counts number of consecutive zero values per channel per day
Non-Zero Tolerance Check	Counts number of non-zero values per channel per day
Consecutive Non-zero Tolerance Check	Counts number of consecutive non-zero values per channel per day
Active-Reactive Tolerance Check	Detects readings where $\text{Reactive energy} / \text{Active energy} > \text{Threshold}$
TOU Load Profile tolerance check	Checks that $\sum \text{LP} \approx \sum \text{TOU Registers}$
TOU Registers tolerance check	Checks that $\sum \text{Register} \approx \sum \text{TOU Registers}$

There are 12 validation checks altogether



PrimeRead: Reports

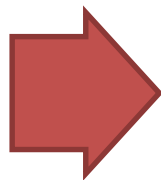
1. Based on industry-standard Crystal Reports reporting tool
2. Unlimited number of reports can be designed and added to the report repository
3. Reports can be scheduled and delivered through several output options:
 1. Screen
 2. File
 3. Email attachment
 4. FTP site
4. Reports can be generated in a variety of formats including:
 - EU
 - Lotus PRN
 - EDI 867
 - Lodestar
 - BDF
 - Excel
 - HTML
 - Word
 - CSV



PrimeRead: ES Licensing Model

The licensing model **DOES NOT** depend on the number of:

1. Communication ports
2. Different protocols
3. Installed/Named clients
4. Workstations



The license model focuses **ONLY** on the number of meters in the database.

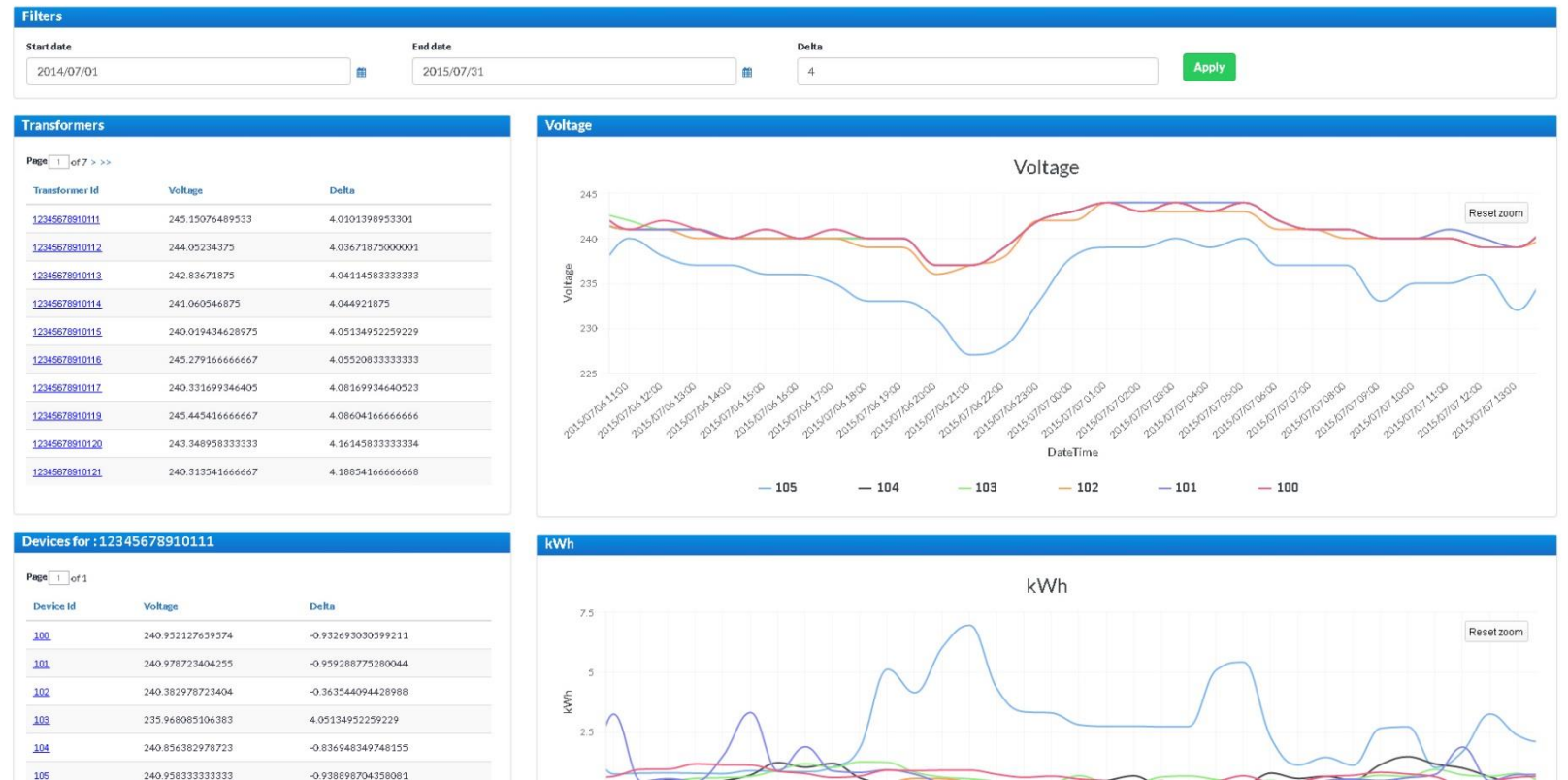
Install as many clients and mobile users as needed!



PrimeAnalytics: Revenue Assurance Use Case

Detect Potential Theft

- Establish date range
- Sort meters by transformer
- Utilize voltage and kWh
- Determine avg voltage per transformer
- Set deltas for determining potential issues
- Look for loss of voltage/kWh correlation
- Dashboard all pertinent information

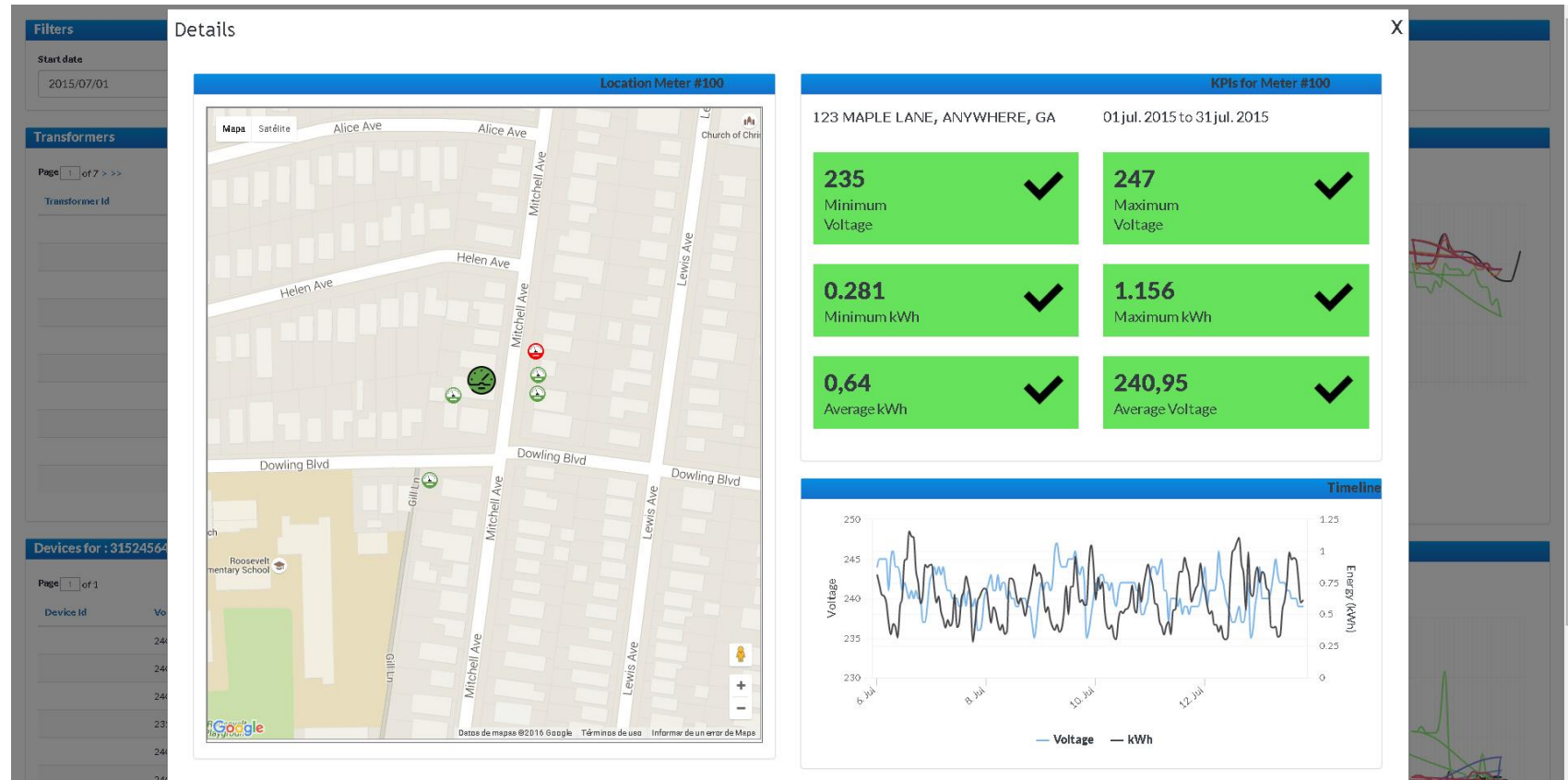




PrimeAnalytics: Revenue Assurance Use Case

Drill Down

- Map meters per transformer
- Indicate potential areas of concern
- Street level satellite view
- Meters with potential tamper condition in Red





PrimeAnalytics: Revenue Assurance Use Case

Reports

- Schedule reports to proactively notify appropriate utility staff to potential theft and other conditions
- Create custom reports based on utility-specific criteria
- Built-in scalability to analyze all meters for tamper conditions

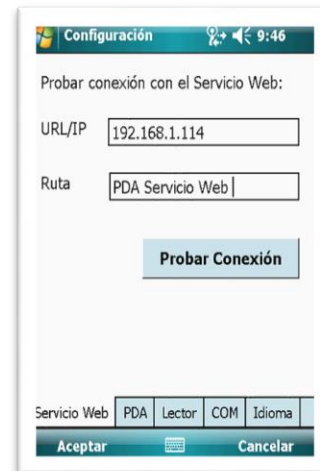
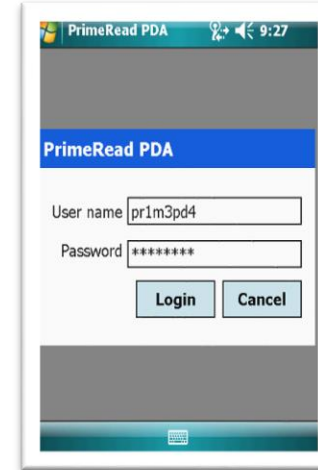
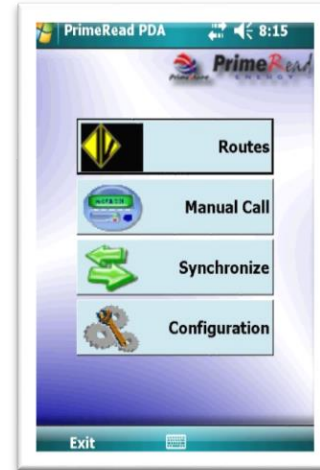
The screenshot displays the 'Revenue Assurance' configuration page. On the left is a navigation menu with 'Reports' selected. The main area contains configuration fields: 'Task enabled' (checkbox), 'Task name', 'Delta', 'Dynamic date' (set to 'Yesterday'), 'Report' (set to 'Device Report'), 'Export format' (set to 'PDF'), 'Top' (set to '10'), and 'To'. On the right, scheduling options include 'Schedule' (set to 'Once'), 'Start Time' (set to '08:00'), and 'Run On' (set to '2016/03/01'). 'Save' and 'Cancel' buttons are present.

Run	Task Name	Date	Delta	Mail To	Running	Last Run	Next Scheduled Run
Enabled: 0	TEST REPORT	LastWeek	10	test@primestone.com	No	29 feb. 2016 07:40	29 feb. 2016 09:40
Enabled: 0	TEST REPORT	LastWeek	15.4848484	test@primestone.com	No	29 feb. 2016 08:40	29 feb. 2016 11:40
Enabled: 0	TEST REPORT	LastWeek	24.646465	test@primestone.com	No	29 feb. 2016 08:45	29 feb. 2016 01:45
Enabled: 0	TEST REPORT	LastWeek	58.9595959	test@primestone.com	No	29 feb. 2016 05:40	01 mar. 2016 11:45
Enabled: 0	TEST REPORT	LastWeek	5	test@primestone.com	No	27 feb. 2016 12:20	27 feb. 2016 12:20
Enabled: 0	TEST REPORT	LastWeek	36.78787	test@primestone.com	No	29 feb. 2016 07:50	01 mar. 2016 12:00
Enabled: 0	TEST REPORT	LastWeek	1.656565	test@primestone.com	No	27 feb. 2016 12:05	05 mar. 2016 12:05
Enabled: 0	TEST REPORT	LastWeek	7.98654	test@primestone.com	No	27 feb. 2016 12:10	06 mar. 2016 12:10
Enabled: 0	TEST REPORT	LastWeek	15.6523	test@primestone.com	No	29 feb. 2016 08:15	29 feb. 2016 12:15
Enabled: 0	TEST REPORT	LastWeek	16.54	test@primestone.com	No	25 feb. 2016 09:05	01 mar. 2016 12:10
Enabled: 0	TEST REPORT	Last30Days	34.878787	test@primestone.com	No	29 feb. 2016 05:35	29 feb. 2016 06:35
Enabled: 0	TEST REPORT	Last30Days	15.232323	test@primestone.com	No	29 feb. 2016 05:09	29 feb. 2016 06:08
Enabled: 0	TEST REPORT	LastWeek	12	test@primestone.com	No	26 feb. 2016 06:24	26 feb. 2016 08:00
Enabled: 0	TEST REPORT	Last30Days	54.87878	test@primestone.com	No	29 feb. 2016 03:30	07 mar. 2016 03:30
Enabled: 0	TEST REPORT	LastWeek	15.7877	test@primestone.com	No	27 feb. 2016 12:20	27 feb. 2016 12:20
Enabled: 0	TEST REPORT	LastWeek	100	test@primestone.com	No	Never	26 feb. 2016 07:30
Enabled: 0	TEST REPORT	Last30Days	10.7575757	test@primestone.com	No	29 feb. 2016 04:45	01 mar. 2016 04:45
Enabled: 0	TEST REPORT	Last30Days	-1.474747	test@primestone.com	No	29 feb. 2016 05:20	29 mar. 2016 05:20



PrimeMobile

- On-site data collection for handhelds (PDAs or Laptops)
- Route management
- PDA management
- Connect to the meter using:
 - Optical probe
 - RS-232
 - Bluetooth
 - Zigbee
- Support for over 200 meter models
- Protocol updates during synchronization
- Standard ANSI and IEC optical probes may be used
- Helps control energy loss, too!





PrimeGuard: Alarms and Notifications

- Flexible formula engine for detecting incidents across:
 - Load profile (mass memory)
 - Events
 - Registers
- Trigger work orders + notifications to contact groups
- Three escalation levels
- Filters + graphs
- On-line alarms via:
 - SMS
 - Email
 - Local inbox

Custom Id
Description
Priority
Alarm type
First level period
Second level period

Conditions

Logical operators

Functions

Time window

Period Frequency

```
EXIST ( [E:SMARTDATA_PRESENCE_SENSOR] ) AND EXIST ( [E:SMARTDATA_METER_DOOR] ) AND ( [E:SMARTDATA_CELL_DOOR] = 0 )
```

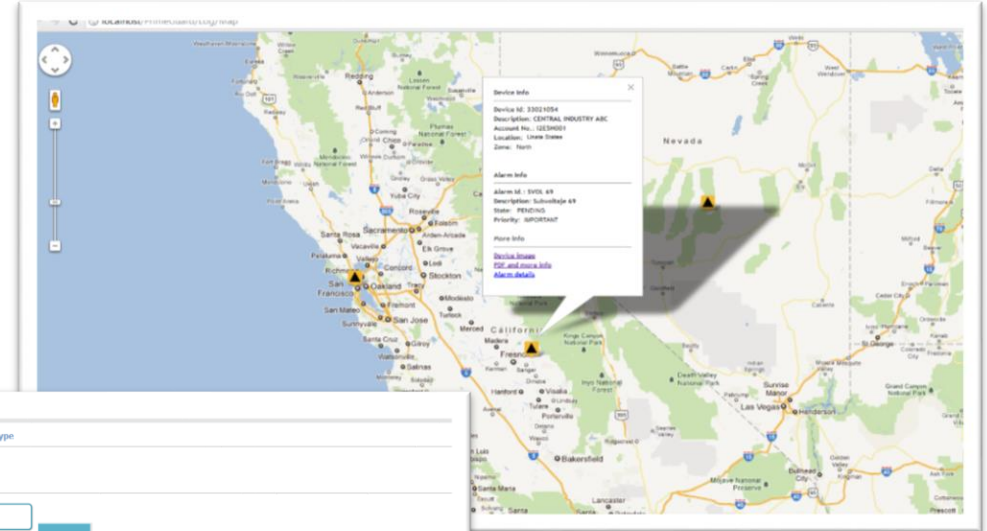
Insert field

Type a variable name to start the filter

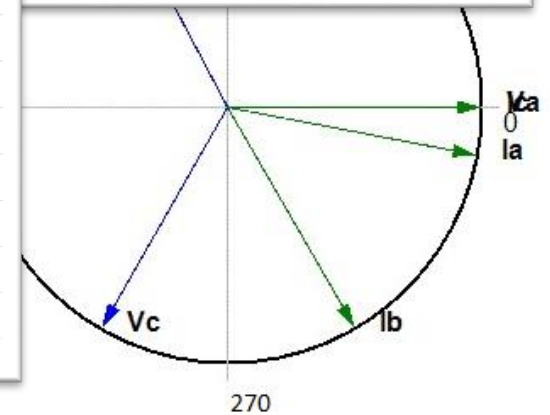
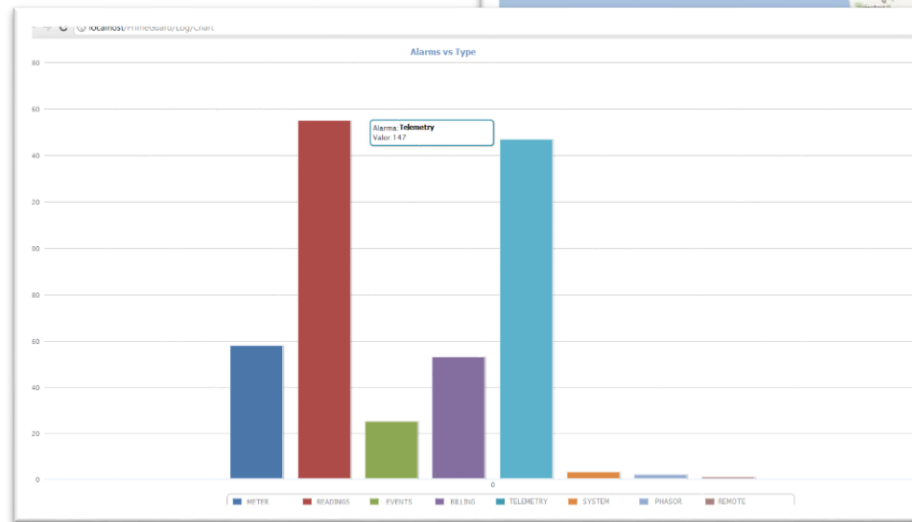


PrimeGuard: Alarms and Notifications

- Integration with Google Maps
- Customizable dashboards
- Drill up/down options
- Web application
- Phasor diagrams
- Stand-alone or integrated with PrimeRead

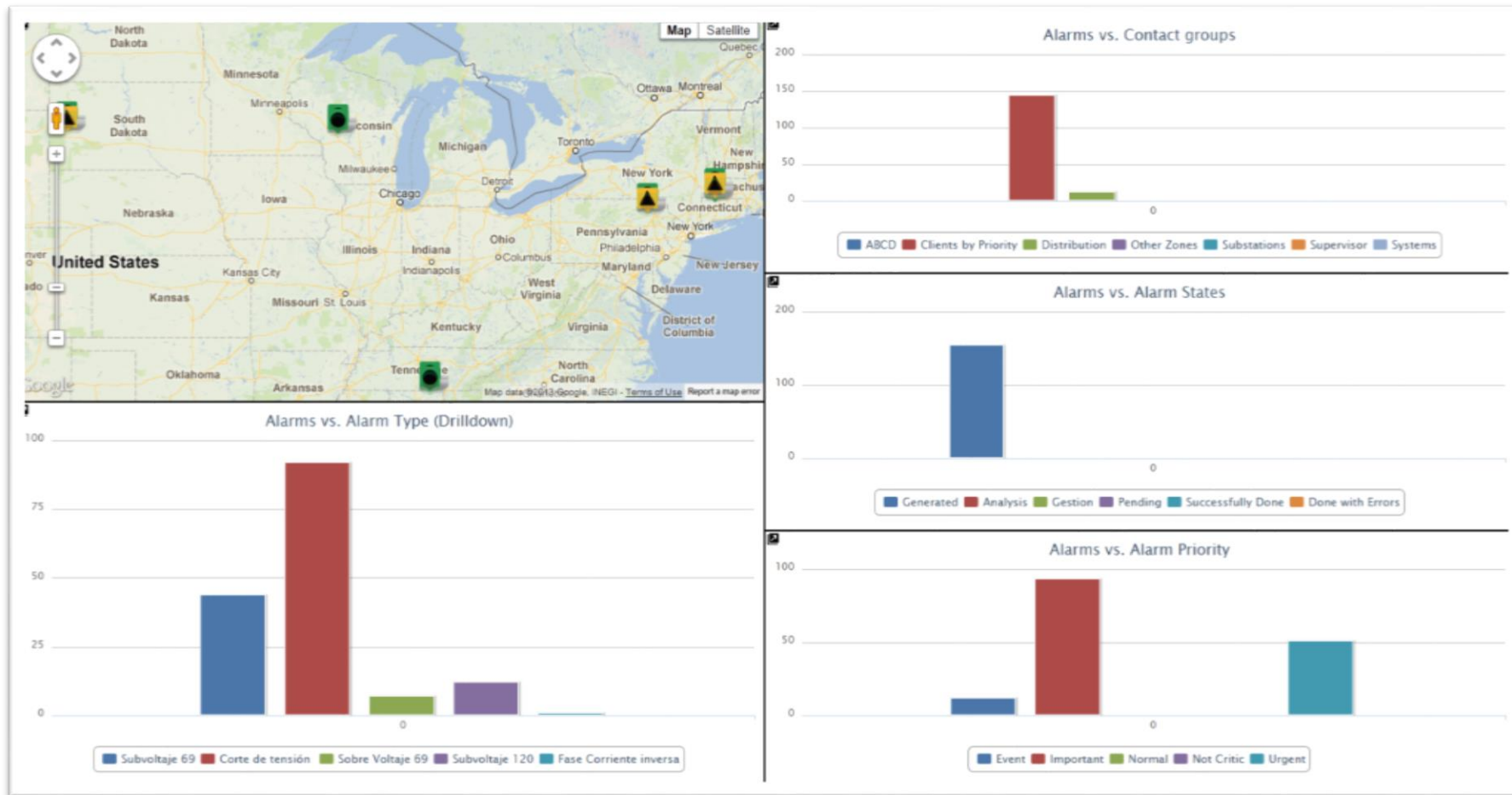


A VERY HIGH ROI



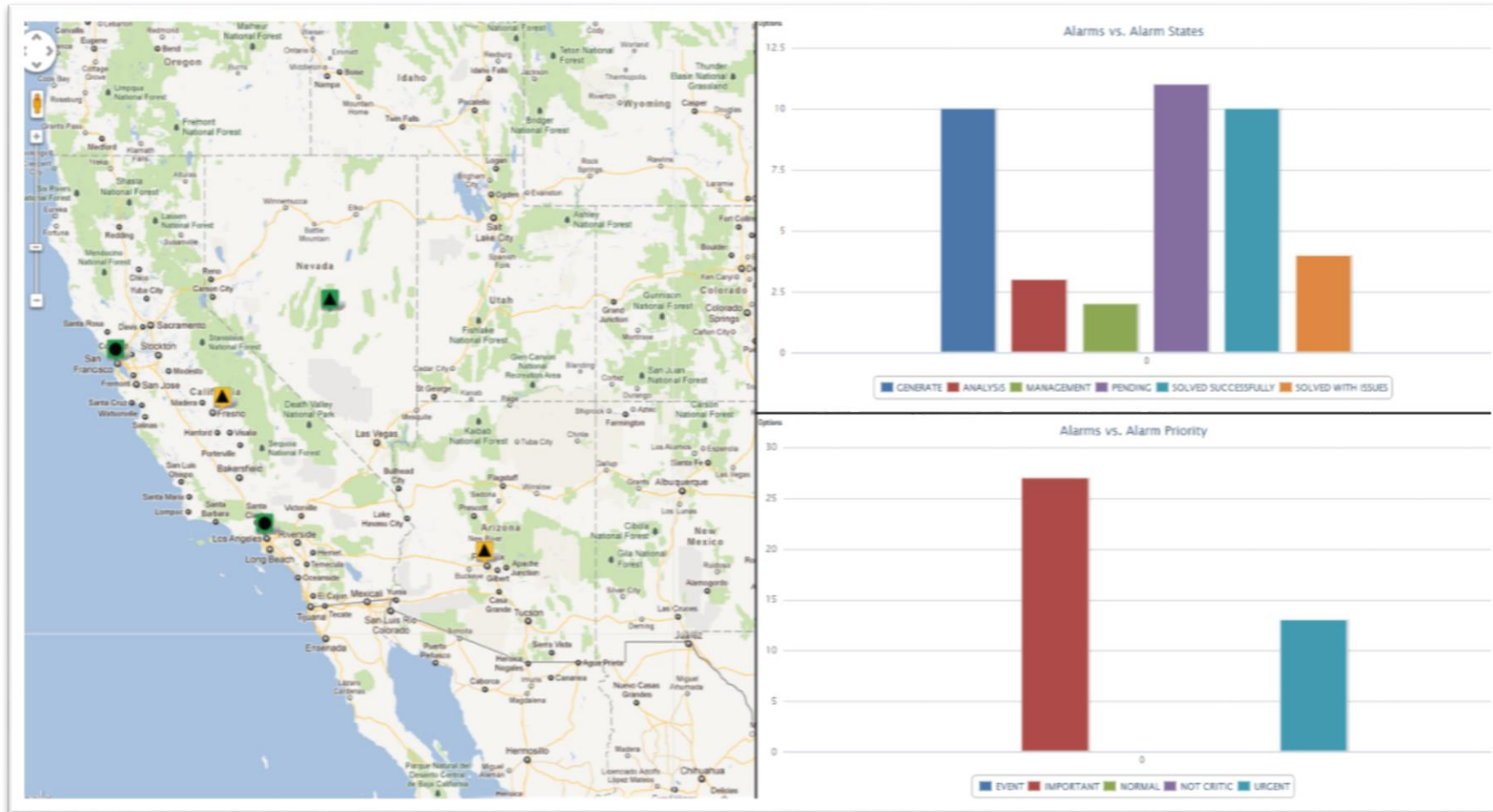


PrimeGuard: Dashboards



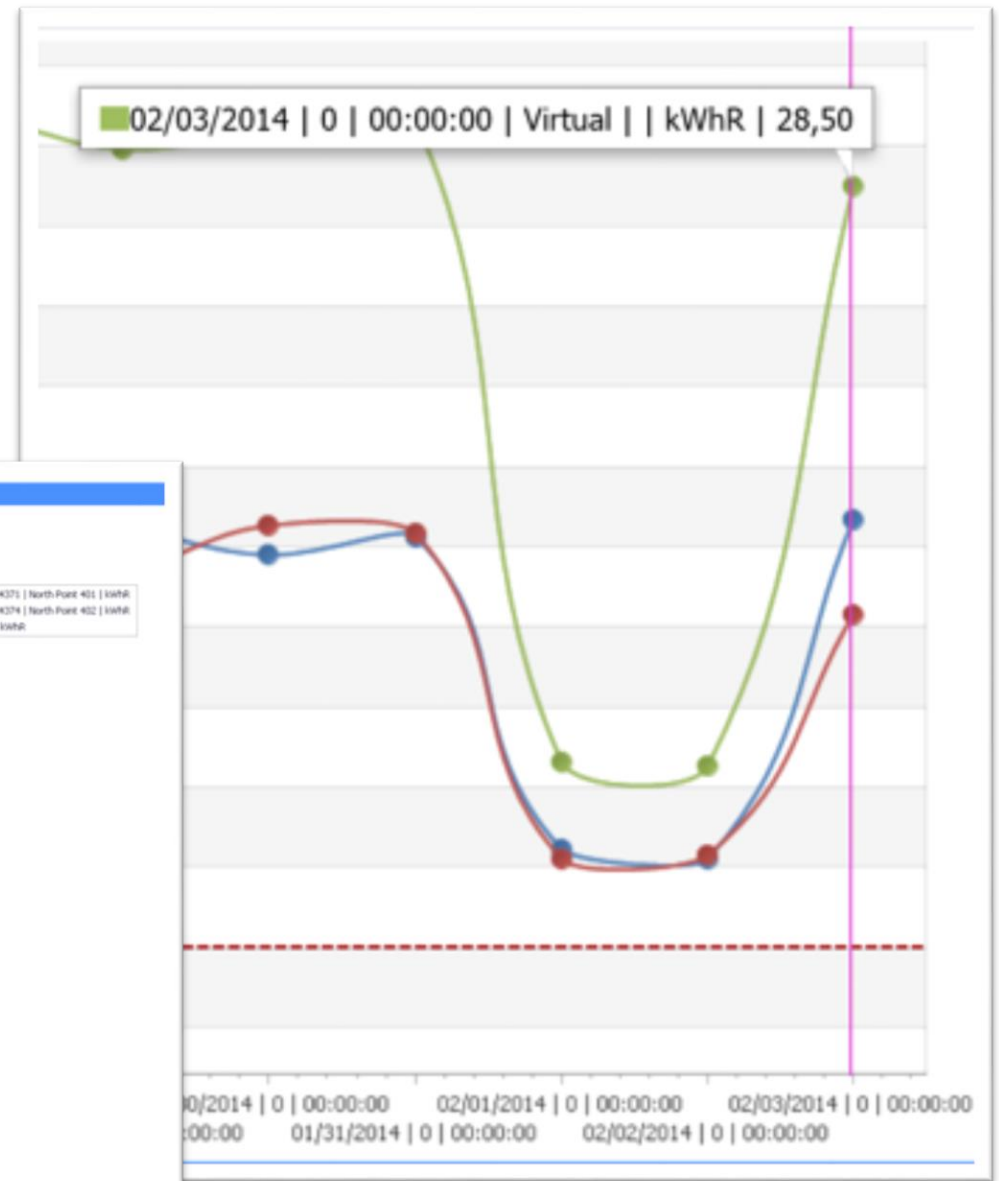
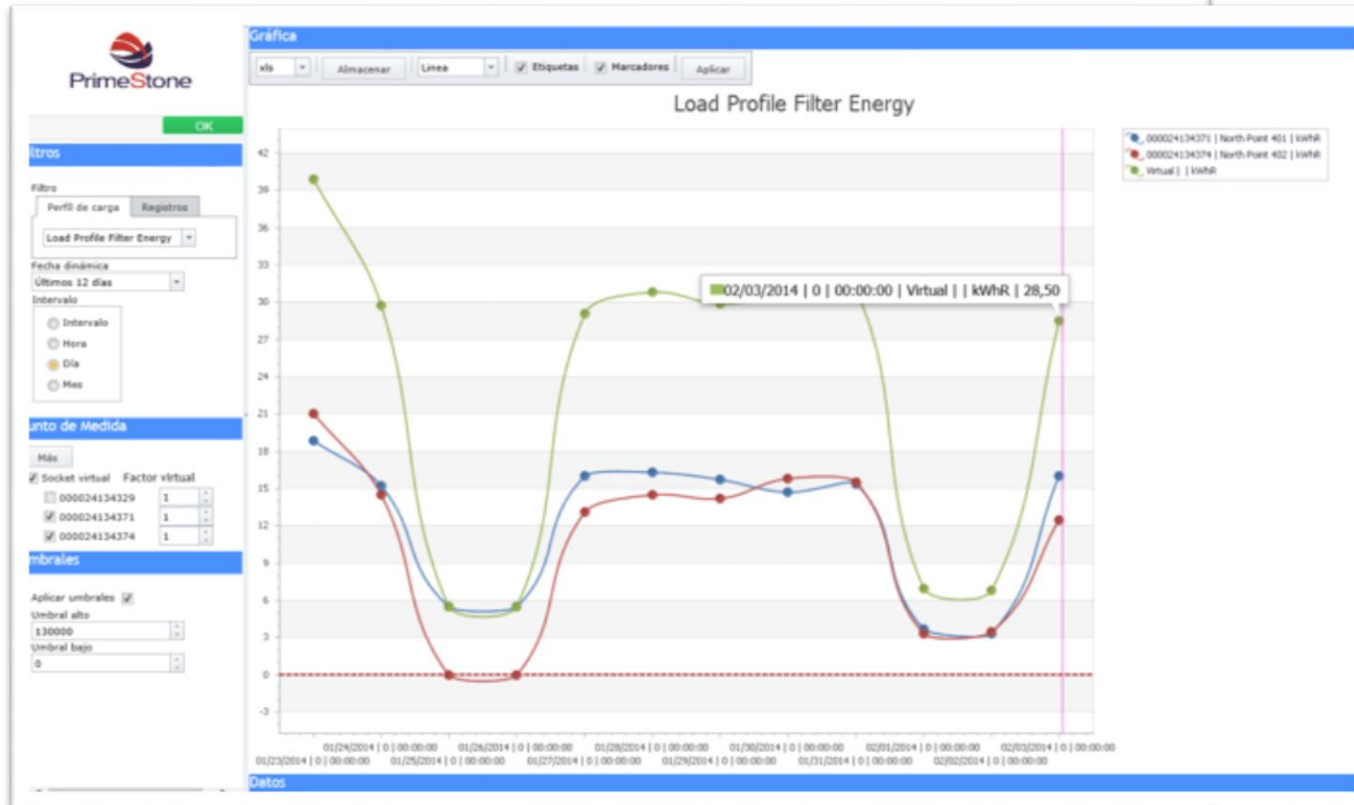


PrimeGuard: Dashboards



PrimeWeb

- Web portal designed for end users
- Publish readings on the internet or an intranet



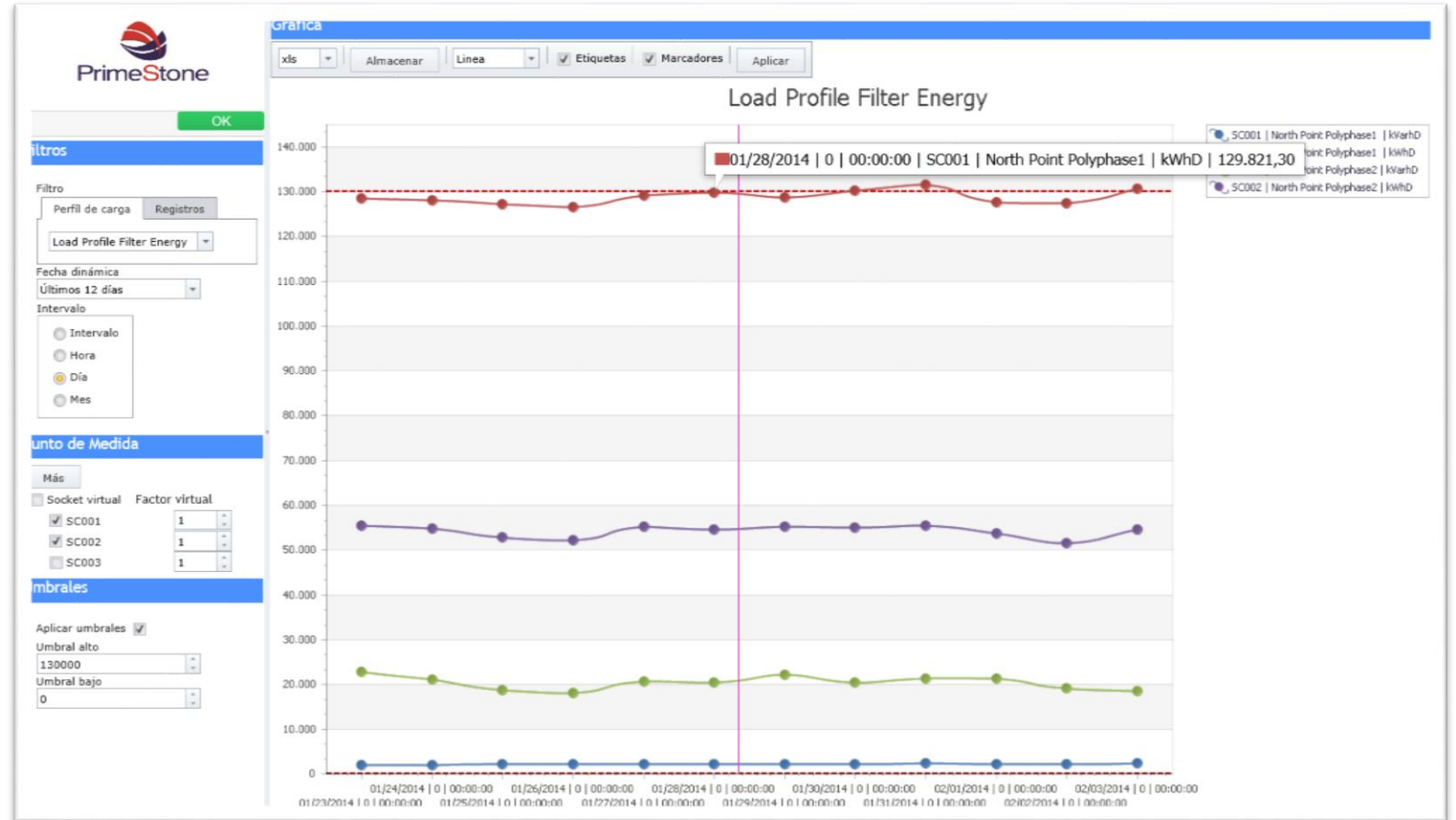
PrimeWeb: Modules

Administrator

- System settings
- Add, edit or delete meters
- Reports
- User access

Users

- Filters
- Graphs
- Decision cube (pivot table)





PrimeGrid: Energy Balances

Utilities are looking for a system that..

- centralizes and gathers all the information required for weekly, daily and monthly balances.
- detects the electrical structures with the most critical energy losses.
- calculates balances at all levels (tension levels / distribution system).
- generates single phase diagrams with a view of the results of the balance.
- offers tools to follow up on the exchange/intertie points with other utilities.

PrimeGrid: Energy Balances

- Define a hierarchy where you view all your electrical structures. This is the starting point for all reports, graphs and tables
- Drill up/down features
- Multiple data sources
- Historical record and versions of the balances for review and monitoring
- Certification of the final balance
- Support for SSO (Open DS, Active Directory)
- Built in report design tool
- Web application
- Detect and report structures by level of energy losses in order to focus efforts where they are needed





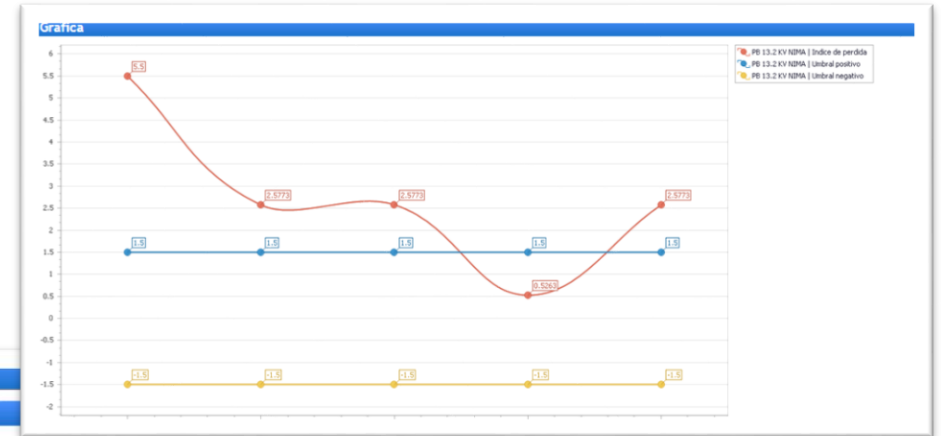
PrimeGrid

Reports

- Max / min losses by date
- Max / min losses by type
- Loss duration
- Grouping history
- Grouping detail



A VERY HIGH ROI



Stand-alone or integrated with PrimeRead

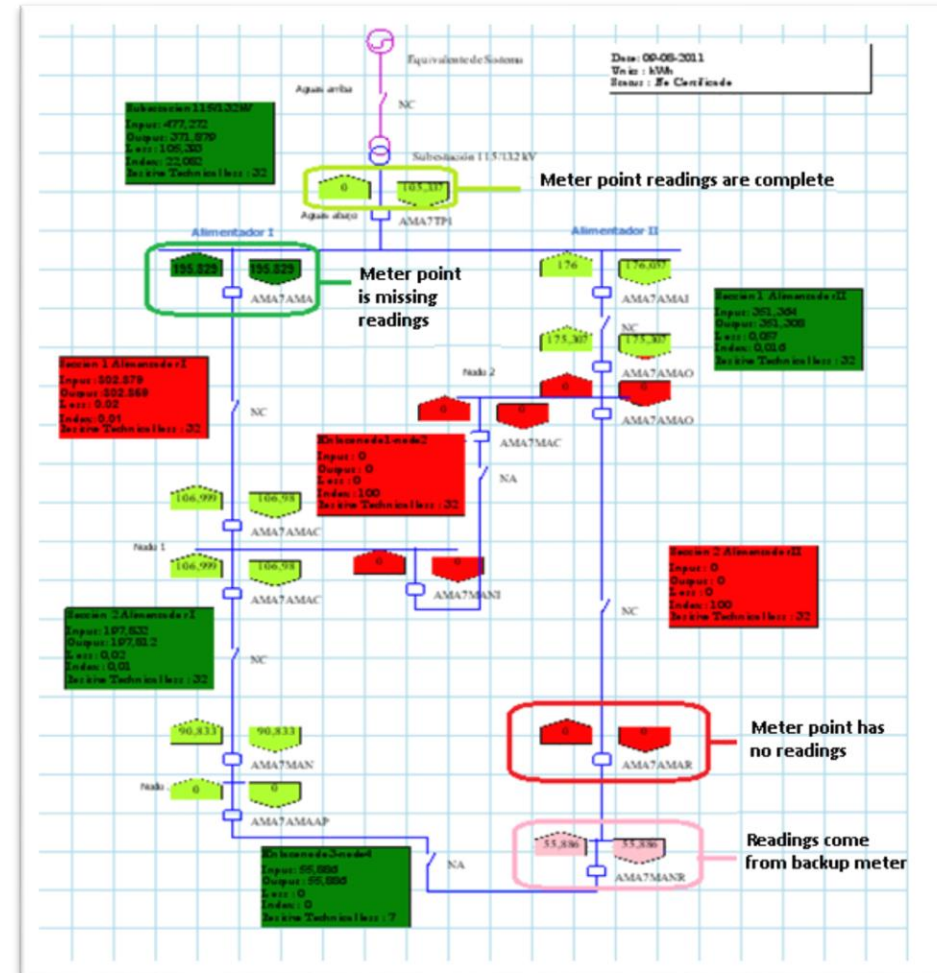


PrimeGrid

Single phase diagram

Shapes and colors are customizable

- Balances that have been properly closed are shown in green
- Balance that have not been properly closed are shown in red
- Meter points with full readings are shown in light green
- Meter points with missing readings are shown in dark green
- Meter points where the readings come from the backup meter are shown in pink
- Meter point with no readings are shown in red





PrimeGrid: Energy Balances

Summary tables per day

Perdidas	Dia		
	2	3	4
Area energetica			
L 34.5 kV ALCALA-CARTAGO	-124.8	-128.64	-45.7
L 34.5 kV ANSERMANUEVO CARTAGO	109.595	110.233	250.7
L 34.5 kV BUGA-CONALVIDRIOS	49002.811	48095.251	47831.7
L 34.5 kV BUGALAGRANDE-TULUA 115 kV	2634.456	2676.679	2302.5
L 34.5 kV CAICEDONIA-ZARZAL	712.4	732.1	64.7
L 34.5 kV CALIMA-LOBOGUERRERO	884.4	904.2	89.7
L 34.5 kV CAN-CRUC-PALM-FLO-SBA	18908.357	19465.815	16641.8
L 34.5 kV CANDELARIA-PRADERA	967.8	988.28	1087.3
L 34.5 kV CANDELARIA-TUNAL	5339.21	5147.896	5159.8
L 34.5 kV FARFAN - RIOFRIO I - RIOFRIO II	-10.892	-87.882	27.6
L 34.5 kV INCAUCA ORTIGAL CANDE	2150.398	2943.598	161.5

Summary tables with the energy balance

Nivel de Tension	Estructura	Entrada	Salida	Perdidas	% Perdidas	# Intervalos
34.5 kV	L 34.5 kV ALCALA-CARTAGO	276168	277416	-124.8	-0.452	288
34.5 kV	L 34.5 kV ANSERMANUEVO CARTAGO	36010.801	35901.205	109.595	0.304	288
34.5 kV	L 34.5 kV BUGA-CONALVIDRIOS	73453.201	24450.39	49002.811	66.713	288
34.5 kV	L 34.5 kV BUGALAGRANDE-TULUA 115 kV	88169.4	85534.944	2634.456	2.988	288
34.5 kV	L 34.5 kV CAICEDONIA-ZARZAL	46684.801	45972.401	712.4	1.526	384
34.5 kV	L 34.5 kV CALIMA-LOBOGUERRERO	59715.001	58830.601	884.4	1.481	384
34.5 kV	L 34.5 kV CAN-CRUC-PALM-FLO-SBA	316120.205	297211.848	18908.357	5.981	1824
34.5 kV	L 34.5 kV CANDELARIA-PRADERA	85975.201	85007.401	967.8	1.126	672



PrimeDR: Demand Response

Real-time Monitoring. Call Events. Automated Notifications.

PrimeDR | Main

Super@admin ▾

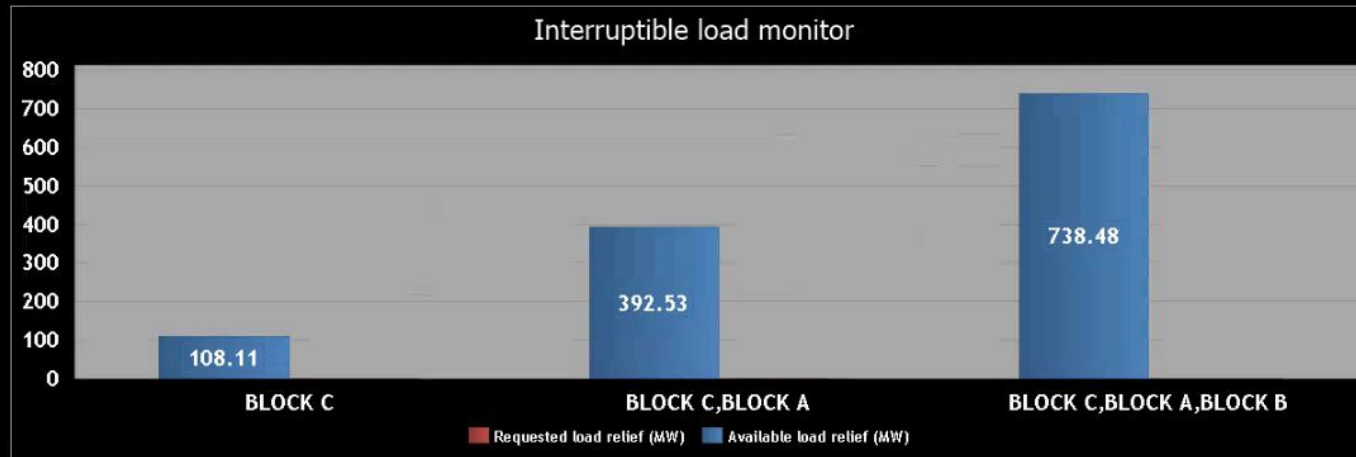
Visualization

Visualization

Block view

Detailed view

IL View



Execute (1 Block)

1 Block	
Maximum hours / year	100:00
Remaining hours/year	98:44
Daily execution count	0
Execution Values	
Requested load relief (MW)	0.00
Available load relief (MW)	108.11
Received load relief (MW)	0.00
IL Time remaining	01:00
Data Quality	
Successful Scan (%)	81.18
Last read date/time	01/20/2016 15:33:37

Execute (2 Blocks)

2 Blocks	
Maximum hours / year	100:00
Remaining hours/year	98:44
Daily execution count	0
Execution Values	
Requested load relief (MW)	0.00
Available load relief (MW)	392.53
Received load relief (MW)	0.00
IL Time remaining	01:00
Data Quality	
Successful Scan (%)	80.23
Last read date/time	01/20/2016 15:33:37

Execute (All Blocks)

All Blocks	
Maximum hours / year	100:00
Remaining hours/year	98:44
Daily execution count	0
Execution Values	
Requested load relief (MW)	0.00
Available load relief (MW)	738.48
Received load relief (MW)	0.00
IL Time remaining	01:00
Data Quality	
Successful Scan (%)	83.47
Last read date/time	01/20/2016 15:33:37



PrimeDR: Demand Response

Real-time Monitoring. Call Events. Automated Notifications.





PrimeDR: Demand Response

Real-time Monitoring. Call Events. Automated Notifications.

PrimeDR | Main Super@admin ▾

Visualization ▾

Visualization ▾

- Block view
- Detailed view**
- IL View

Block view

SelectedBlock: BLOCK C Company 1

Block view

Block detail view

Customer	Firm load	Current load
Customer 1	0	0
Customer 2	0	0
Customer 3	0	0
Customer 4	0	0
Customer 5	0	0
Customer 6	0	0
Customer 7	0	0
Customer 8	0	0
Customer 9	0	0
Customer 10	0	0
Customer 11	0	0
Customer 12	0	0
Customer 13	0	0
Customer 14	0	0
Customer 15	0	0
Customer 16	0	0
Customer 17	0	0
Customer 18	0	0
Customer 19	0	0
Customer 20	0	0
Customer 21	0	0
Customer 22	0	0
Customer 23	0	0
Customer 24	0	0
Customer 25	0	0
Customer 26	0	0
Customer 27	0	0
Customer 28	0	140
Customer 29	0	0
Customer 30	0	0
Customer 31	0	0
Customer 32	0	0
Customer 33	0	0
Customer 34	0	0
Customer 35	0	0
Customer 36	0	0
Customer 37	0	0
Customer 38	0	0
Customer 39	0	0
Customer 40	0	0
Customer 41	0	0
Customer 42	0	0
Customer 43	0	0

Legend: Firm load (red), Current load (blue)

Drag a column header here to group by that column

Client	Description	Firm load	Firm load	Execution date	Success scans (%)	Current load
000000123	Customer 1	19.1	0	1/20/2016 3:34:09 PM	100	18.10119140625
000000124	Customer 2	66	0	1/20/2016 3:34:09 PM	100	54.81896462556
000000125	Customer 3	20	12	1/20/2016 3:34:09 PM	100	27.97903203964



PrimeDR: Demand Response

Real-time Monitoring. Call Events. Automated Notifications.

Drag a column header here to group by that column

Date/time	User name	IP address
12/13/2015 22:00:51	DataIntegrator_Service	148.115.12.13
12/13/2015 22:01:00	DataIntegrator_Service	148.115.12.13
12/13/2015 22:01:02	DataIntegrator_Service	148.115.12.13
12/13/2015 22:01:04	DataIntegrator_Service	148.115.12.13
12/13/2015 22:01:05	DataIntegrator_Service	148.115.12.13
12/13/2015 22:01:07	DataIntegrator_Service	148.115.12.13
12/13/2015 22:01:09	DataIntegrator_Service	148.115.12.13
12/13/2015 22:01:11	DataIntegrator_Service	148.115.12.13
12/13/2015 22:01:12	DataIntegrator_Service	148.115.12.13
12/13/2015 22:01:14	DataIntegrator_Service	148.115.12.13
12/13/2015 22:01:16	DataIntegrator_Service	148.115.12.13
12/13/2015 22:01:18	DataIntegrator_Service	148.115.12.13
12/13/2015 22:01:19	DataIntegrator_Service	148.115.12.13
12/13/2015 22:01:21	DataIntegrator_Service	148.115.12.13
12/13/2015 22:01:23	DataIntegrator_Service	148.115.12.13
12/13/2015 22:01:25	DataIntegrator_Service	148.115.12.13

All None << < Page: 1 of 88 [Total rows: 88] > >>

Create Filter

Drag a column header here to group by that column

#	Date/time	Entity action	Entity	Entity ID	Association action	Association	Association ID
▼	12/13/2015 22:00:53	Update	Schedule integration settings	Name: Company 1			
>	12/13/2015 22:01:00	Update	Schedule integration settings	Name: Company 2			

All None << < Page: 1 of 2 [Total rows: 2] > >>

Column selector Export PDF

Create Filter

Drag a column header here to group by that column

Changed property	Old value	New value
LastExecutionDate	12/12/2015 10:00:17 PM	12/13/2015 10:00:53 PM

<< < Page: 1 of 1 [Total rows: 1] > >>

Column selector

Create Filter



PrimeDR: Demand Response

Real-time Monitoring. Call Events. Automated Notifications.

PrimeDR | Main Super@admin ▾

IL Execution log ▾

Drag a column header here to group by that column

#	Date/time	User name	Execution source	Action taken	Blocks	Block number	Elapsed time	Remaining time	Expected total re	Actual total relief
> <input type="checkbox"/>	12/14/2015 21:04:47	Super@admin	IL view	Start comm timer	2 Blocks	BLOCK C, BLOCK A	00:00	99:24	357.31	0.00
> <input type="checkbox"/>	12/14/2015 21:21:43	Super@admin	IL view	Start comm timer	2 Blocks	BLOCK C, BLOCK A	00:00	99:24	306.87	0.00
> <input type="checkbox"/>	12/14/2015 21:50:19	Super@admin	IL view	Start comm timer	2 Blocks	BLOCK C, BLOCK A	00:00	99:24	443.49	0.00
> <input type="checkbox"/>	12/14/2015 21:51:19	PrimeDR Service	Sys log	Initiate interruptible	2 Blocks	BLOCK C, BLOCK A	00:00	99:24	444.25	0.00
> <input type="checkbox"/>	12/14/2015 21:53:27	Super@admin	IL view	End comm timer	2 Blocks	BLOCK A	02:07	99:57	400.83	0.00
> <input type="checkbox"/>	12/14/2015 21:54:55	PrimeDR Service	Sys log	Halted interruptible	2 Blocks	BLOCK A	03:36	99:57	394.44	0.00
> <input type="checkbox"/>	12/14/2015 21:55:27	Super@admin	IL view	End comm timer	2 Blocks	BLOCK C	04:08	99:55	93.73	0.00
> <input type="checkbox"/>	12/14/2015 21:57:01	PrimeDR Service	Sys log	Halted interruptible	2 Blocks	BLOCK C	05:41	99:55	92.74	0.00
> <input type="checkbox"/>	12/15/2015 09:17:03	PrimeDR Service	IL view	Start comm timer	1 Block	BLOCK C	00:00	99:54	85.77	0.00
> <input type="checkbox"/>	12/15/2015 09:18:03	PrimeDR Service	Sys log	Initiate interruptible	1 Block	BLOCK C	00:00	99:54	86.01	0.00
> <input type="checkbox"/>	12/15/2015 09:23:09	PrimeDR Service	Sys log	Action status	1 Block	BLOCK C	05:06	99:54	84.65	0.00
> <input type="checkbox"/>	12/15/2015 09:28:30	PrimeDR Service	Sys log	Action status	1 Block	BLOCK C	10:27	99:49	85.90	0.00
> <input type="checkbox"/>	12/15/2015 09:34:00	PrimeDR Service	Sys log	Action status	1 Block	BLOCK C	15:57	99:44	83.43	0.00
> <input type="checkbox"/>	12/15/2015 09:39:00	PrimeDR Service	IL view	Start comm timer	2 Blocks	BLOCK A	00:00	99:39	175.25	0.00
> <input type="checkbox"/>	12/15/2015 09:40:00	PrimeDR Service	Sys log	Initiate interruptible	2 Blocks	BLOCK A	00:00	99:39	179.32	0.00
> <input type="checkbox"/>	12/15/2015 09:40:06	PrimeDR Service	Sys log	Action status	1 Block	BLOCK C	22:02	99:37	82.95	0.00
> <input type="checkbox"/>	12/15/2015 09:45:02	PrimeDR Service	Sys log	Action status	2 Blocks	BLOCK A	05:02	99:33	178.69	0.00

All None << < Page: 1 of 6 [Total rows: 275] > >>

Column selector Export PDF ▾

[Create Filter](#)



PrimeStone: Worldwide Customer Base



Thank you!



PrimeStone®