

Lyu, S., Liu, X., Venail, P. and Zhou, S. 2016. Functional dissimilarity, not phylogenetic relatedness, determines interspecific interactions among plants in the Tibetan alpine meadows. – Oikos doi: 10.1111/oik.03378

Appendix 1

Table A1. Species list in the study sites. The 12 species highlighted in bold are used in this experiment.

Family	Genus species
Alliaceae	<i>Allium sikkimense</i>
Apiaceae	<i>Chamaesium paradoxum</i>
Asteraceae	<i>Ligularia virgaurea</i>
Asteraceae	<i>Saussurea pulchra</i>
Asteraceae	<i>Artemisia mongolica</i>
Asteraceae	<i>Taraxacum mongolicum</i>
Asteraceae	<i>Anaphalis lacteal</i>
Asteraceae	<i>Saussurea nigrescens</i>
Asteraceae	<i>Saussurea leontodontoides</i>
Asteraceae	<i>Ajania tenuifolia</i>
Asteraceae	<i>Leontopodium haplophylloides</i>
Asteraceae	<i>Saussurea stella</i>
Asteraceae	<i>Aster diplostephioides</i>
Caryophyllaceae	<i>Cerastium fontanum</i>
Caryophyllaceae	<i>Stellaria uda</i>
Cyperaceae	<i>Scirpus distigmaticus</i>
Cyperaceae	<i>Kobresia myosuroides</i>
Cyperaceae	<i>Kobresia capillifolia</i>
Euphorbiaceae	<i>Euphorbia helioscopia</i>
Fabaceae	<i>Astragalus polycladus</i>
Fabaceae	<i>Oxytropis kansuensis</i>
Fabaceae	<i>Tibetia himalaica</i>
Fabaceae	<i>Thermopsis lanceolala</i>
Fabaceae	<i>Medicago lupulina</i>
Gentianaceae	<i>Lomatogonium carinthiacum</i>
Gentianaceae	<i>Gentianopsis paludosa</i>
Gentianaceae	<i>Halenia elliptica</i>
Gentianaceae	<i>Gentiana farreri</i>
Geraniaceae	<i>Geranium pylzowianum</i>

Lamiaceae	<i>Scutellaria rehderiana</i>
Orchidaceae	<i>Herminium monorchis</i>
Plantaginaceae	<i>Plantago depressa</i>
Poaceae	<i>Poa pratensis</i>
Poaceae	<i>Elymus nutans</i>
Poaceae	<i>Agrostis hugoniana</i>
Poaceae	<i>Koeleria litvinowii</i>
Poaceae	<i>Stipa aliena</i>
Poaceae	<i>Festuca sinensis</i>
Polygonaceae	<i>Rumex acetosa</i>
Polygonaceae	<i>Polygonum macrophyllum</i>
Ranunculaceae	<i>Thalictrum alpinum</i>
Ranunculaceae	<i>Ranunculus tanguticus</i>
Ranunculaceae	<i>Anemone obtusiloba</i>
Ranunculaceae	<i>Anemone trullifolia</i>
Ranunculaceae	<i>Anemone rivularis</i>
Ranunculaceae	<i>Delphinium kamaonense</i>
Rosaceae	<i>Potentilla anserina</i>
Rosaceae	<i>Potentilla bifurca</i>
Rosaceae	<i>Potentilla potaninii</i>
Saxifragaceae	<i>Parnassia trinervis</i>
Scrophulariaceae	<i>Euphrasia regelii</i>
Scrophulariaceae	<i>Lancea tibetica</i>
Scrophulariaceae	<i>Veronica eriogyne</i>
Scrophulariaceae	<i>Pedicularis szetschuanica</i>

Table A2. Pearson correlations among phylogenetic distance (PD) and functional dissimilarity (FD) based on five single traits and all of them.

	PD	FD [maximum height]	FD [leaf phosphorus]	FD [leaf nitrogen]	FD [seed mass]
FD [maximum height]	0.258				
FD [leaf phosphorus]	0.160	0.043			
FD [leaf nitrogen]	-0.177	-0.095	-0.143		
FD [seed mass]	-0.242	0.286	0.111	0.178	
FD [SLA]	-0.017	-0.224	-0.545	-0.024	-0.054

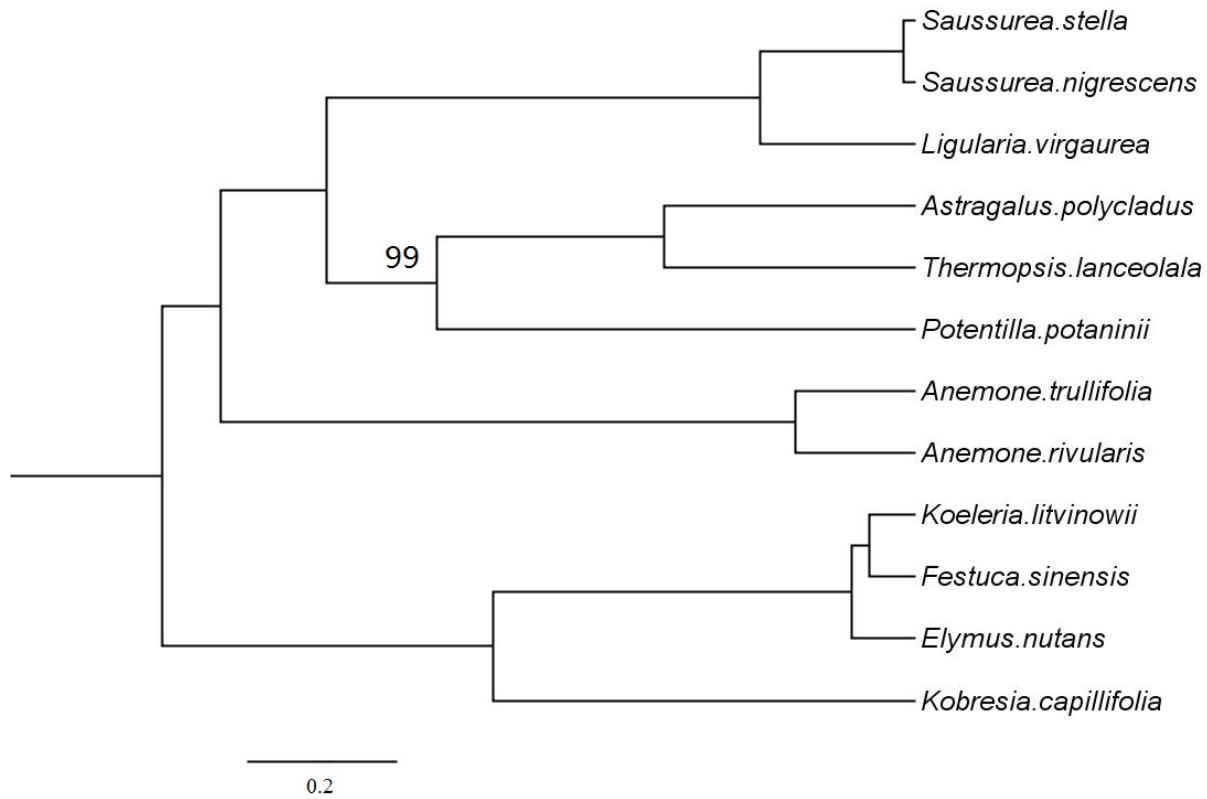


Figure A1. Maximum likelihood phylogeny of 12 species used in this experiment. The value on the node indicates the bootstrap score in 100 randomizations. The nodes without the scores suggest they get 100 scores in the bootstrap test.