

One Island's Green School Butterfly, Bee & Moth Chart

Native



Kamehameha
(*Vanessa tameamea* / Mamaki and Koa)

Introduced and naturalized



Monarch
(*Danaus plexippus* / Milkweeds)



Gulf Fritillary
(*Agraulis vanilla* / Passion vine)



Citrus Swallowtail
(*Papilio xuthus* / Citrus)



Large Orange Sulphur
(*Phoebis agarithe* / Fabaceae)



Bean Butterfly
(*Lampides boeticus* / Fabaceae)



Black Witch Moth (male; females are tan)
(*Ascalapha odorata*)



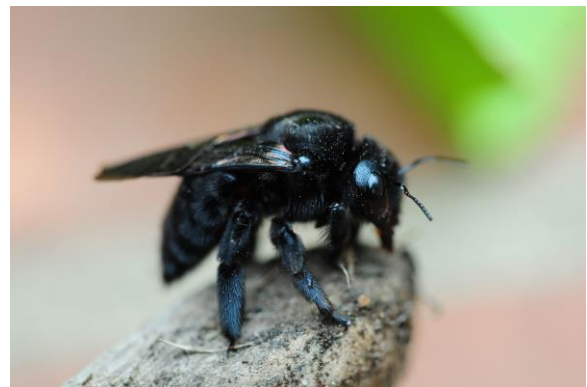
Fiery Skipper
(*Hylephila phyleus* / Grasses and Asterace)



Honey Bee
(*Apis* – many types)



Hawk Moth
(*Macroglossum stellatarum*)



Carpenter Bee
(*Xylocopa violacea*)

