

Appendix J

**USFWS Critical Habitat
in Ecological Sections and Subsections**

Table J-1a. USFWS Critical Habitat in Ecological Sections and Subsections

Central California Coast Section

Common Name	Scientific Name	USFS Ecological Subsection									
		Status ¹	East Bay Hills-Mt. Diablo	Leeward Hills	North Coastal Santa Lucia Range	Santa Clara Valley	Santa Cruz Mountains	Santa Maria Valley	South Coastal Santa Lucia Range	Suisun Hills and Valleys	Watsonville Plain-Salinas Valley
Plants											
Contra Costa goldfields	<i>Lasthenia conjugens</i>	FE	X							X	
La Graciosa thistle	<i>Cirsium loncholepis</i>	FE						X			
Monterey spineflower	<i>Chorizanthe pungens var. pungens</i>	FT			X						X
robust (incl. Scotts Valley) spineflower	<i>Chorizanthe robusta (incl. vars. robusta and hartwegii)</i>	FE					X				X
Santa Cruz tarplant	<i>Holocarpha macradenia</i>	FT	X				X				X
Scotts Valley polygonum	<i>Polygonum hickmanii</i>	FE					X				
Scott's Valley spineflower	<i>Chorizanthe robusta hartwegii</i>	FT					X				
Yadon's piperia	<i>Piperia yadonii</i>	FE			X						X
Wildlife											
Alameda whipsnake (=striped racer)	<i>Masticophis lateralis euryxanthus</i>	FT	X							X	
arroyo (=arroyo southwestern) toad	<i>Bufo californicus (=microscaphus)</i>	FE						X			
Bay checkerspot butterfly	<i>Euphydryas editha bayensis</i>	FT		X		X	X				
California red-legged frog	<i>Rana draytonii</i>	FT	X	X	X	X	X	X	X	X	X
California tiger salamander	<i>Ambystoma californiense</i>	FT		X	X	X		X			
Conservancy fairy shrimp	<i>Branchinecta conservatio</i>	FE								X	
Delta smelt	<i>Hypomesus transpacificus</i>	FT								X	
green sturgeon (southern DPS)	<i>Acipenser medirostris</i>	FT	X	X		X				X	
marbled murrelet	<i>Brachyramphus marmoratus</i>	FT					X				X
Morro Bay kangaroo rat	<i>Dipodomys heermanni morroensis</i>	FE							X		
Morro shoulderband (=Banded dune) snail	<i>Helminthoglypta walkeriana</i>	FE							X		
steelhead	<i>Oncorhynchus (=Salmo) mykiss</i>	FT	X	X	X	X	X	X	X	X	X
Steller sea-lion	<i>Eumetopias jubatus</i>	FE					X				
tidewater goby	<i>Eucyclogobius newberryi</i>	FE					X	X	X		X
vernal pool fairy shrimp	<i>Branchinecta lynchi</i>	FT								X	
vernal pool tadpole shrimp	<i>Lepidurus packardii</i>	FE								X	
western snowy plover	<i>Charadrius alexandrinus nivosus</i>	FT			X		X		X		X
Zayante band-winged grasshopper	<i>Trimerotropis infantilis</i>	FE					X				

Note: Only USFS Ecological Sections and Subsection containing State park units are listed

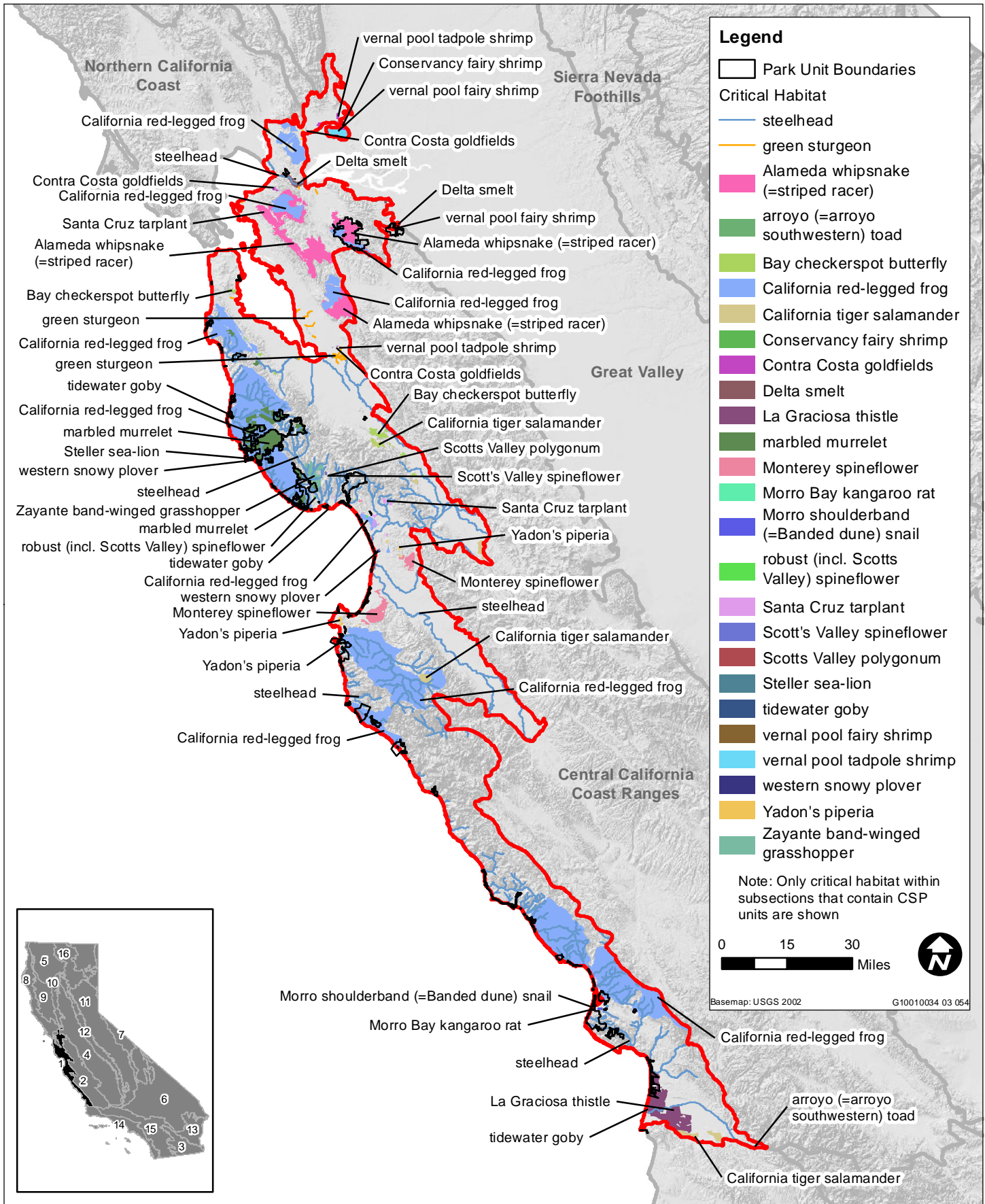
¹ Status definitions:

Federal Endangered Species Act (FESA):

FE Endangered

FT Threatened

Source: USFS 1997; USFWS 2011.

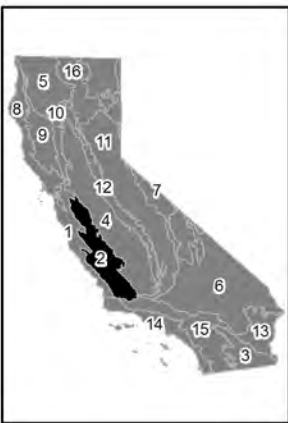
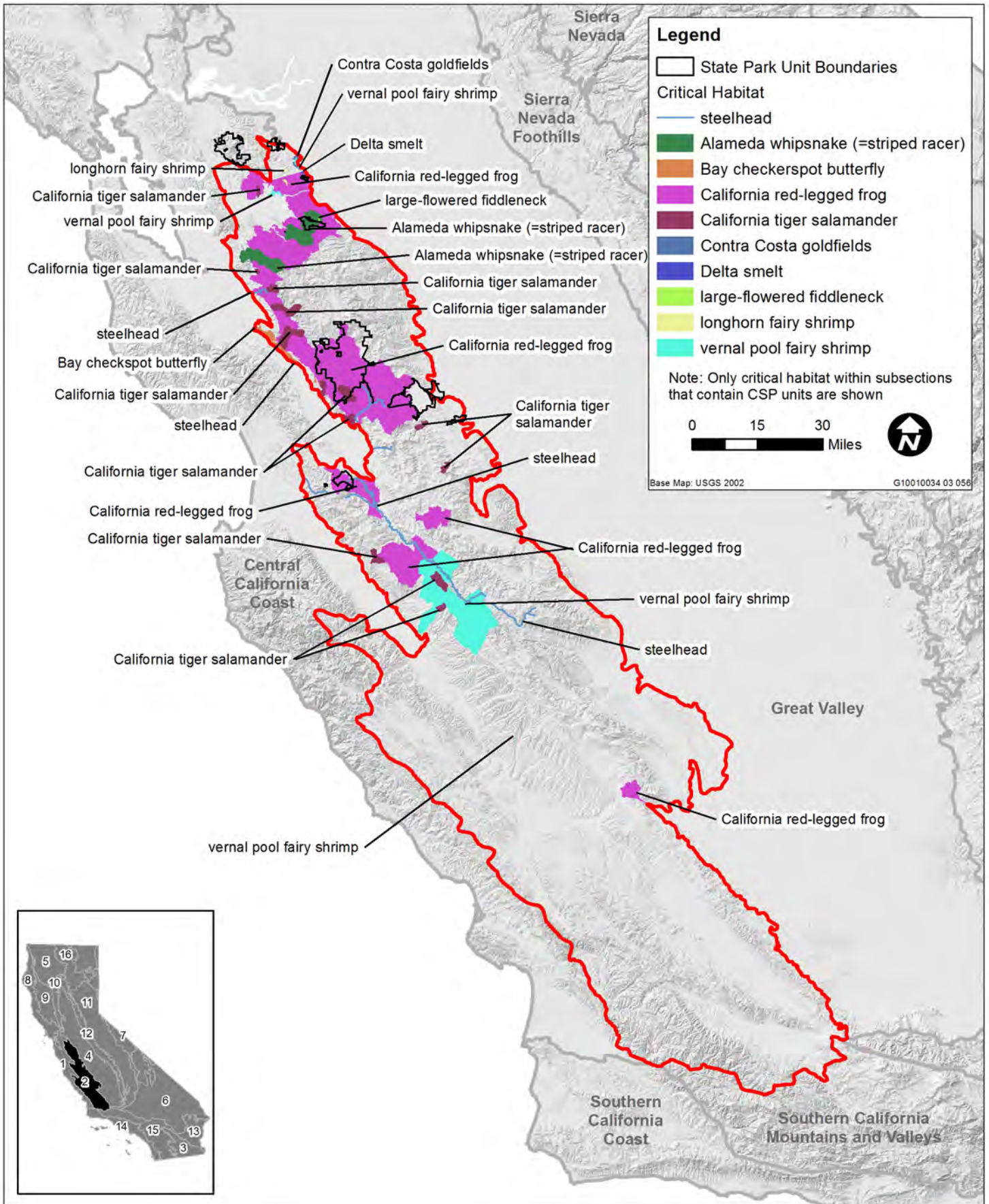


Source: Data received from CSP 2011, USFS 1997, USFWS 2011; Adapted by Ascent Environmental 2012

Table J-2a. USFWS Critical Habitat in Ecological Sections and Subsections

Central California Coast Ranges Section

Common Name	Scientific Name	Status ¹	USFS Ecological Subsection				
		FESA	Diablo Range	Eastern Hills	Fremont-Livermore Hills and Valleys	Gabilan Range	Western Diablo Range
Plants							
Contra Costa goldfields	<i>Lasthenia conjugens</i>	FE		X	X		
large-flowered fiddleneck	<i>Amsinckia grandiflora</i>	FE		X			
Wildlife							
Alameda whipsnake (=striped racer)	<i>Masticophis lateralis euryxanthus</i>	FT	X	X	X		X
Bay checkerspot butterfly	<i>Euphydryas editha bayensis</i>	FT			X		
California red-legged frog	<i>Rana draytonii</i>	FT	X	X	X	X	X
California tiger salamander	<i>Ambystoma californiense</i>	FT	X	X	X	X	X
Delta smelt	<i>Hypomesus transpacificus</i>	FT		X			
longhorn fairy shrimp	<i>Branchinecta longiantenna</i>	FE		X			
steelhead	<i>Oncorhynchus (=Salmo) mykiss</i>	FT	X		X	X	X
vernal pool fairy shrimp	<i>Branchinecta lynchi</i>	FT	X	X	X	X	
Note: Only USFS Ecological Sections and Subsection containing State park units are listed							
¹ Status definitions:							
Federal Endangered Species Act (FESA):							
FE Endangered							
FT Threatened							
Source: USFS 1997; USFWS 2011.							

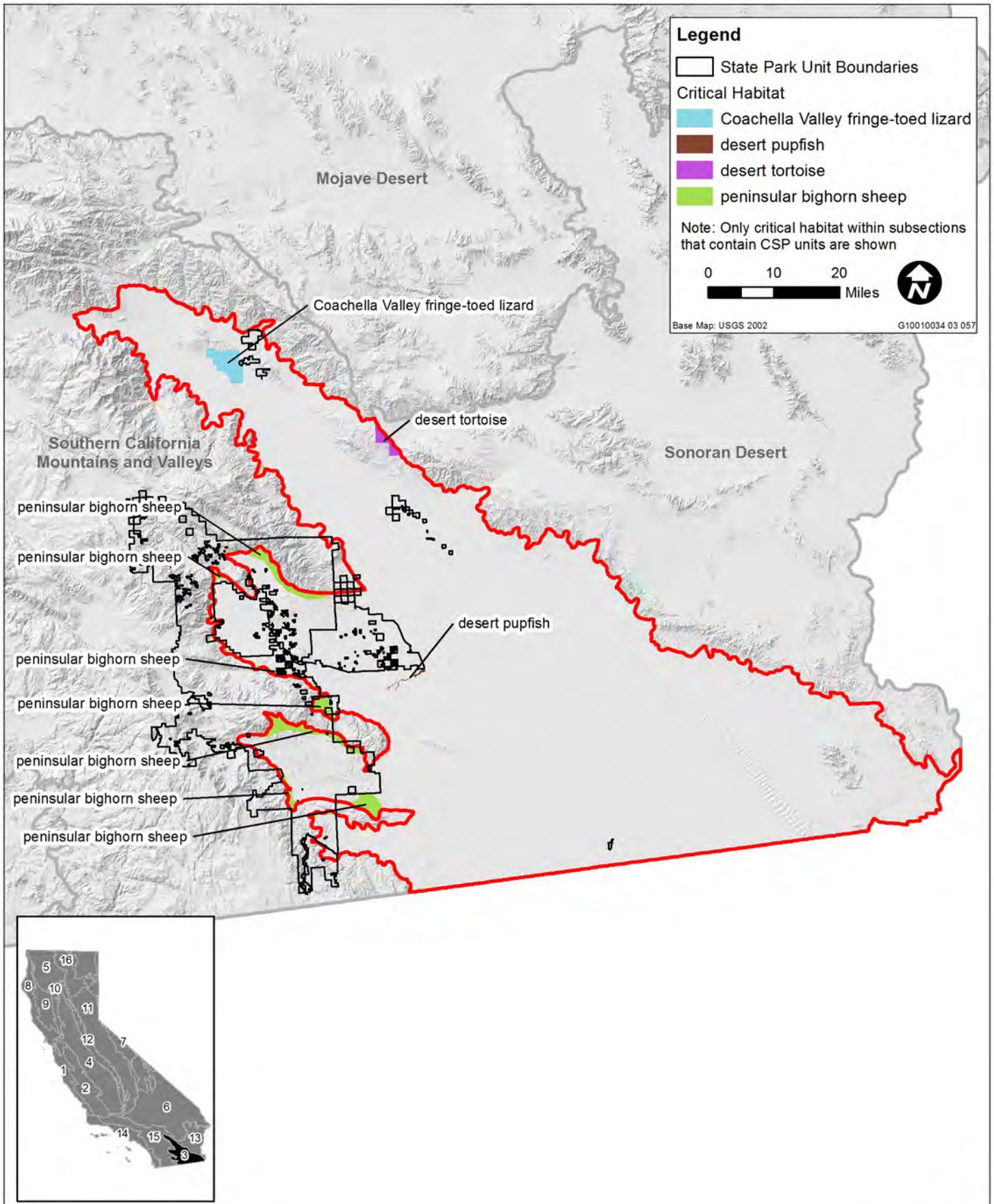


Source: Data received from CSP 2011, USFS 1997, USFWS 2011; Adapted by Ascent Environmental 2012

Table J-3a. USFWS Critical Habitat in Ecological Sections and Subsections

Colorado Desert Section

Common Name	Scientific Name	Status ¹	USFS Ecological Subsection		
		FESA	Borrogo Valley-West Mesa	Coachella Valley	Imperial Valley
Wildlife					
Coachella Valley fringe-toed lizard	<i>Uma inornata</i>	FT		X	
desert pupfish	<i>Cyprinodon macularius</i>	FE	X		
desert tortoise	<i>Gopherus agassizii</i>	FT		X	
peninsular bighorn sheep	<i>Ovis canadensis nelsoni</i>	FE	X	X	
Note: Only USFS Ecological Sections and Subsection containing State park units are listed					
¹ Status definitions:					
Federal Endangered Species Act (FESA):					
FE Endangered					
FT Threatened					
Source: USFS 1997; USFWS 2011.					



Source: Data received from CSP 2011, USFS 1997, USFWS 2011; Adapted by Ascent Environmental 2012

Table J-4a. USFWS Critical Habitat in Ecological Sections and Subsections
Great Valley Section

Common Name	Scientific Name	Status ¹		USFS Ecological Subsection												
		FESA	Butte Sink-Sutter Basin	Camanche Terraces	Delta	Granitic Alluvial Fans and Terraces	Hardpan Terraces	Manteca-Merced Alluvium	North Valley Alluvium	River Alluvium	San Joaquin Basin	Sodic Claypan Terraces	South Valley Alluvium and Basins	Tulare Basin	Westside Alluvial Fans and Terraces	Yolo-American Basins
Plants																
Antioch Dunes evening-primrose	<i>Oenothera deltooides ssp. howellii</i>	FE			X										X	
Butte County meadowfoam	<i>Limnanthes floccosa ssp. californica</i>	FE	X					X		X						
Colusa grass	<i>Neostapfia colusana</i>	FT		X				X	X		X					
Contra Costa goldfields	<i>Lasthenia conjugens</i>	FE			X						X				X	
Contra Costa wallflower	<i>Erysimum capitatum var. angustatum</i>	FE			X										X	
fleshy owl's-clover	<i>Castilleja campestris ssp. succulenta</i>	FT		X		X	X	X								
Greene's tuctoria	<i>Tuctoria greenei</i>	FE		X			X	X	X							
hairy Orcutt grass	<i>Orcuttia pilosa</i>	FE		X			X		X							
Hoover's spurge	<i>Chamaesyce hooveri</i>	FT		X		X	X	X	X		X					
Sacramento Orcutt grass	<i>Orcuttia viscida</i>	FE		X			X									
San Joaquin Orcutt grass	<i>Orcuttia inaequalis</i>	FT		X		X	X	X								
slender Orcutt grass	<i>Orcuttia tenuis</i>	FT						X		X						
Wildlife																
Buena Vista Lake ornate shrew	<i>Sorex ornatus relictus</i>	FE										X				
California condor	<i>Gymnogyps californianus</i>	FE						X				X				
California red-legged frog	<i>Rana draytonii</i>	FT		X	X									X		
California tiger salamander	<i>Ambystoma californiense</i>	FT		X		X	X	X			X					
chinook salmon	<i>Oncorhynchus (=Salmo) tshawytscha</i>	FT	X		X		X		X	X		X			X	
Conservancy fairy shrimp	<i>Branchinecta conservatio</i>	FE		X	X		X	X	X		X	X				
Delta green ground beetle	<i>Elaphrus viridis</i>	FT									X					
Delta smelt	<i>Hypomesus transpacificus</i>	FT			X		X	X			X			X	X	
Fresno kangaroo rat	<i>Dipodomys nitratooides exilis</i>	FE				X										
green sturgeon (southern DPS)	<i>Acipenser medirostris</i>	FT			X		X		X	X		X		X	X	
longhorn fairy shrimp	<i>Branchinecta longiantenna</i>	FE									X					
steelhead	<i>Oncorhynchus (=Salmo) mykiss</i>	FT	X	X	X		X	X	X	X	X	X		X	X	
valley elderberry longhorn beetle	<i>Desmocerus californicus dimorphus</i>	FT					X								X	
vernal pool fairy shrimp	<i>Branchinecta lynchi</i>	FT		X	X	X	X	X	X		X	X	X	X		
vernal pool tadpole shrimp	<i>Lepidurus packardii</i>	FE	X	X	X	X	X	X	X	X	X	X				

Note: Only USFS Ecological Sections and Subsection containing State park units are listed

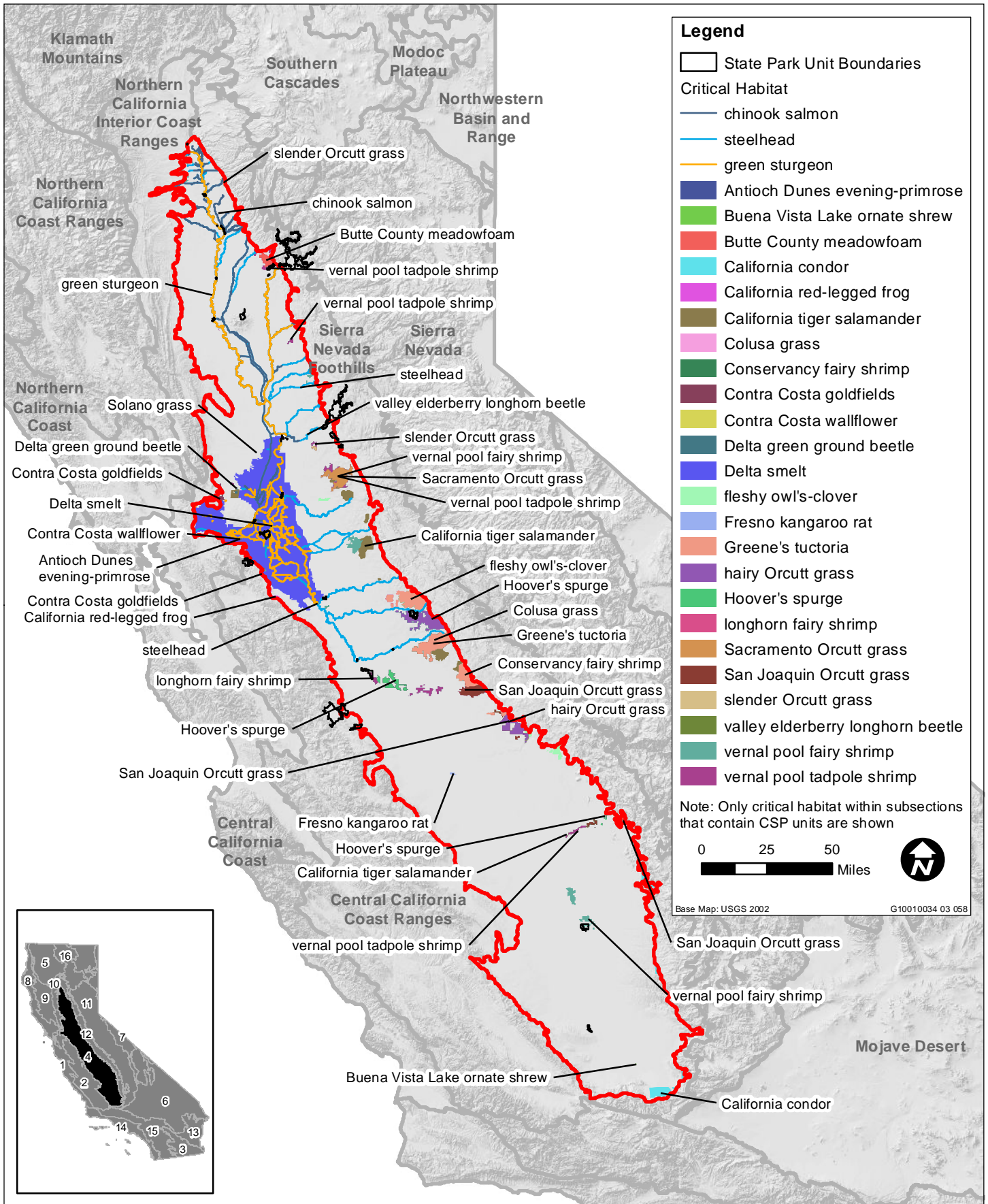
¹ Status definitions:

Federal Endangered Species Act (FESA):

FE Endangered

FT Threatened

Source: USFS 1997; USFWS 2011.

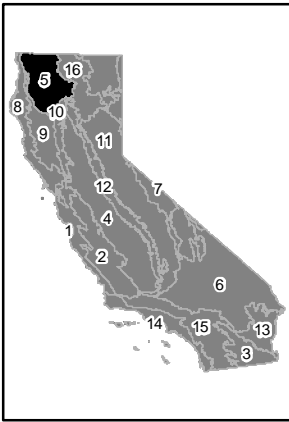


Source: Data received from CSP 2011, USFS 1997, USFWS 2011; Adapted by Ascent Environmental 2012

Table J-5a. USFWS Critical Habitat in Ecological Sections and Subsections

Klamath Mountains Section

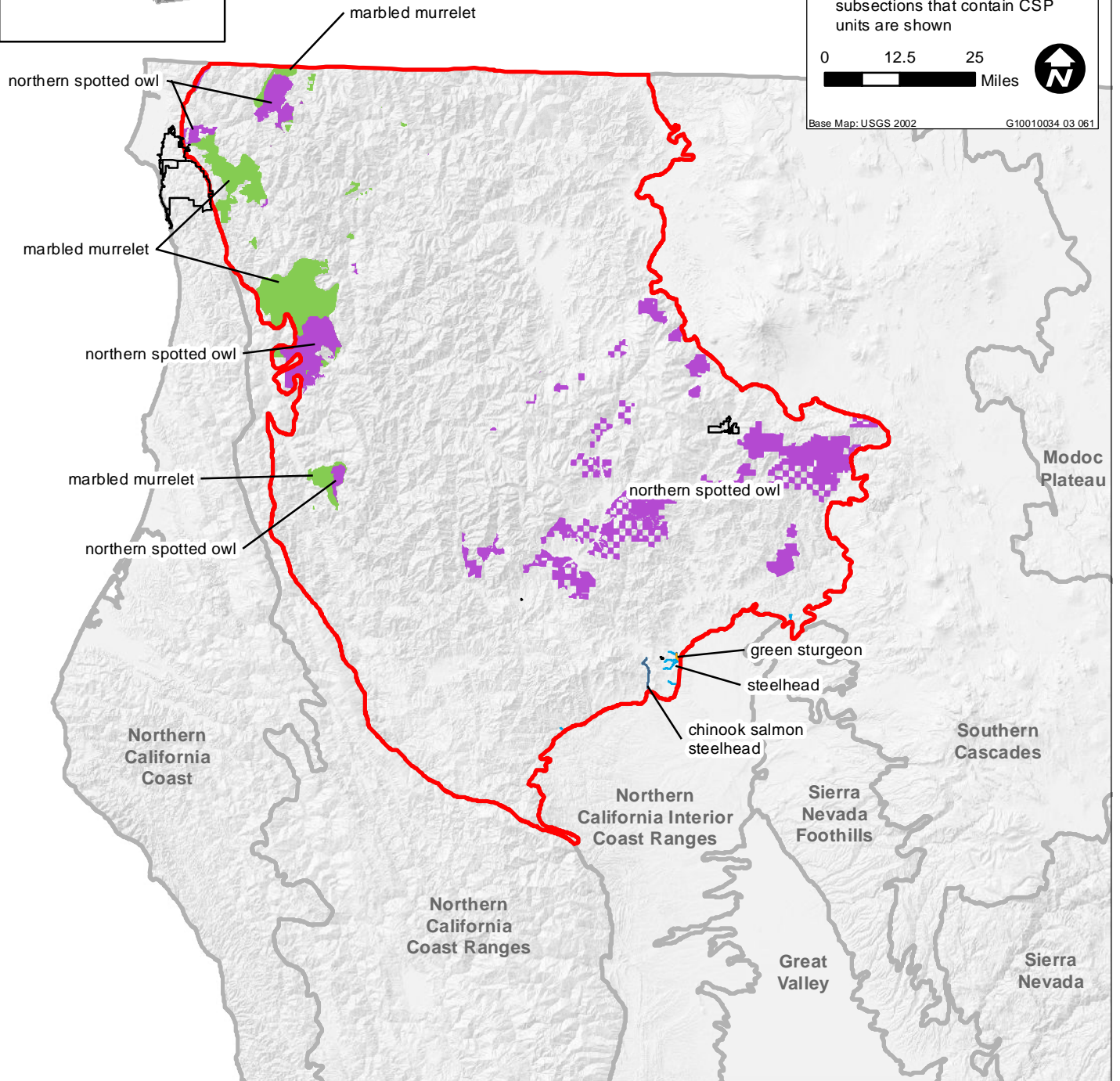
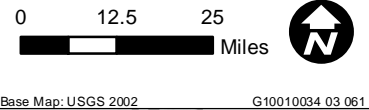
Common Name	Scientific Name	Status ¹	USFS Ecological Subsection				
		FESA	Eastern Klamath Mountains	Gasquet Mountains Ultramafics	Oregon Mountains	Upper Scott Mountains	Western Jurassic
Wildlife							
chinook salmon	<i>Oncorhynchus (=Salmo) tshawytscha</i>	FT	X		X		
green sturgeon (southern DPS)	<i>Acipenser medirostris</i>	FT	X				
marbled murrelet	<i>Brachyramphus marmoratus</i>	FT		X			X
northern spotted owl	<i>Strix occidentalis caurina</i>	FT	X	X	X	X	X
steelhead	<i>Oncorhynchus (=Salmo) mykiss</i>	FT	X		X		
Note: Only USFS Ecological Sections and Subsection containing State park units are listed							
¹ Status definitions:							
Federal Endangered Species Act (FESA):							
FE Endangered							
FT Threatened							
Source: USFS 1997; USFWS 2011.							



Legend

- State Park Unit Boundaries
- Critical Habitat**
- chinook salmon
- steelhead
- green sturgeon
- marbled murrelet
- northern spotted owl

Note: Only critical habitat within subsections that contain CSP units are shown

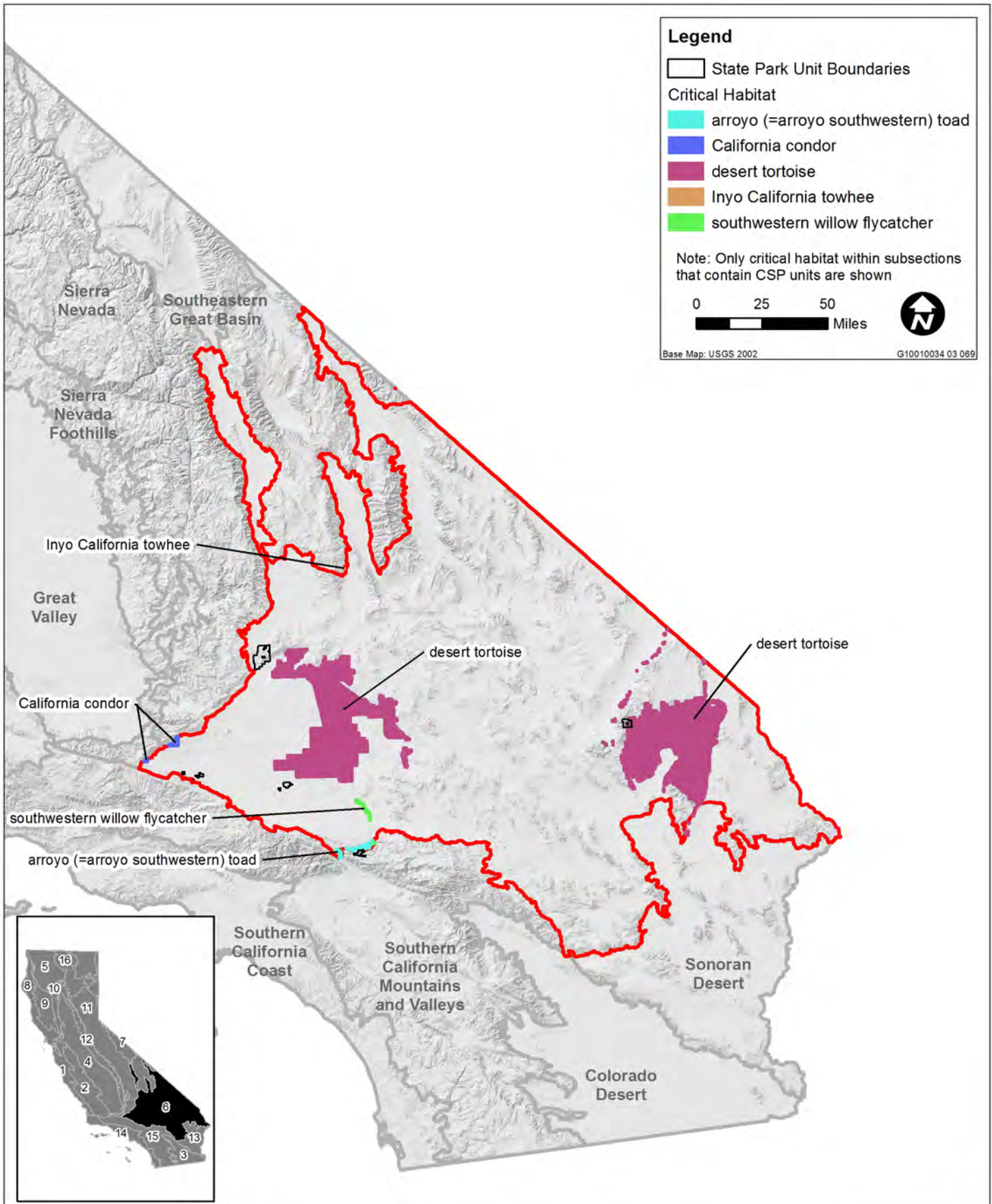


Source: Data received from CSP 2011, USFS 1997, USFWS 2011; Adapted by Ascent Environmental 2012

Table J-6a. USFWS Critical Habitat in Ecological Sections and Subsections

Mojave Desert Section

Common Name	Scientific Name	Status ¹	USFS Ecological Subsection		
		FESA	High Desert Plains and Hills	Providence Mountains-Lanfair Valley	Searles Valley-Owlshead Mountains
Wildlife					
arroyo (=arroyo southwestern) toad	<i>Bufo californicus (=microscaphus)</i>	FE	X		
California condor	<i>Gymnogyps californianus</i>	FE	X		
desert tortoise	<i>Gopherus agassizii</i>	FT	X	X	
Inyo California towhee	<i>Pipilo crissalis eremophilus</i>	FT			X
southwestern willow flycatcher	<i>Empidonax traillii extimus</i>	FE	X		
Note: Only USFS Ecological Sections and Subsection containing State park units are listed					
¹ Status definitions:					
Federal Endangered Species Act (FESA):					
FE Endangered					
FT Threatened					
Source: USFS 1997; USFWS 2011.					

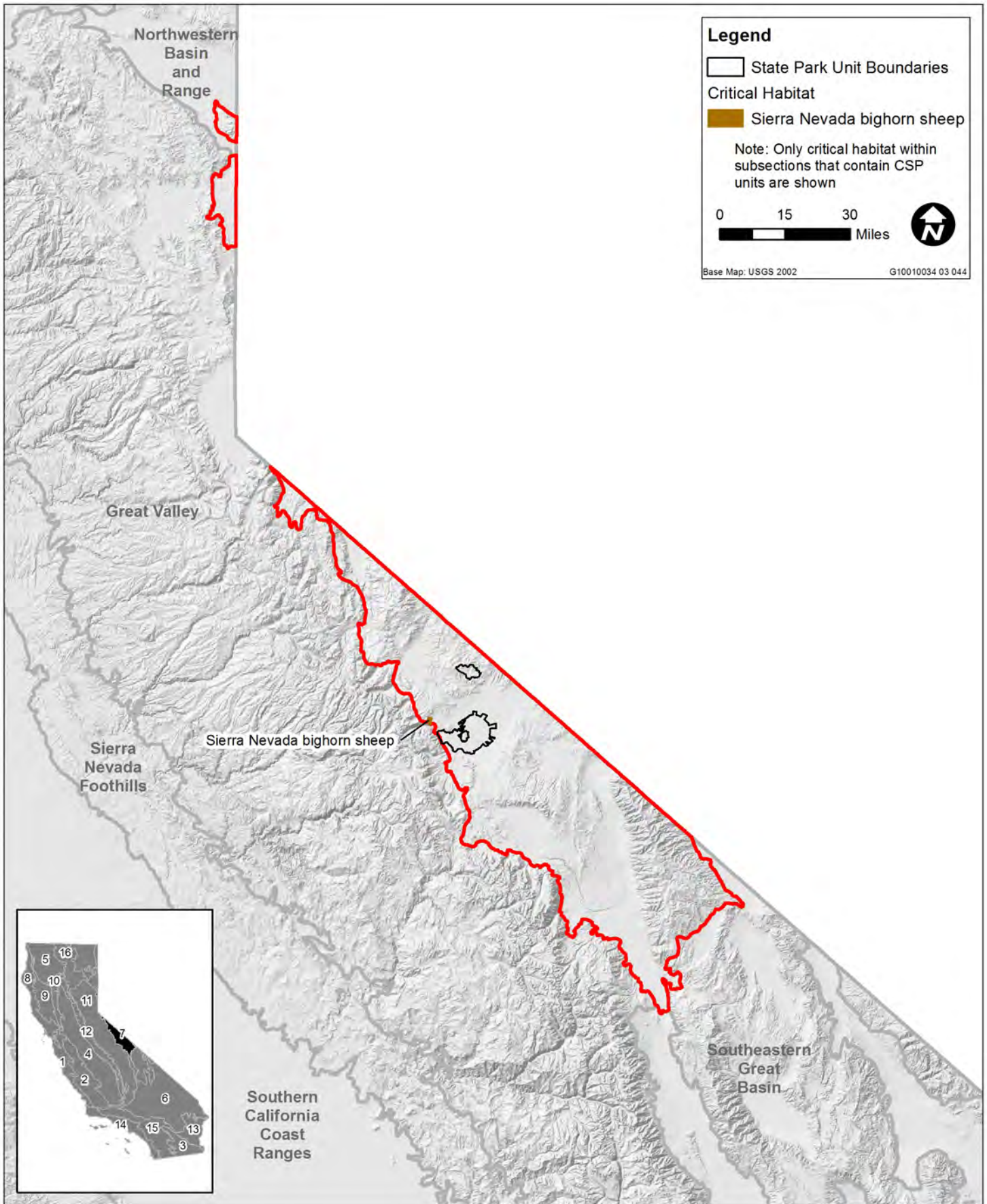


Source: Data received from CSP 2011, USFS 1997, USFWS 2011; Adapted by Ascent Environmental 2012

Table J-7a. USFWS Critical Habitat in Ecological Sections and Subsections

Mono Section

Common Name	Scientific Name	Status ¹	USFS Ecological Subsection	
		FESA	Bodie Hills-Excelsior Mountains	Mono Valley
Wildlife				
Sierra Nevada bighorn sheep	<i>Ovis canadensis sierrae</i>	FE	X	X
Note: Only USFS Ecological Sections and Subsection containing State park units are listed ¹ Status definitions: Federal Endangered Species Act (FESA): FE Endangered FT Threatened Source: USFS 1997; USFWS 2011.				



Source: Data received from CSP 2011, USFS 1997, USFWS 2011; Adapted by Ascent Environmental 2012

Table J-8a. USFS Critical Habitat in Ecological Sections and Subsections

Northern California Coast Section

Common Name	Scientific Name	Status ¹	USFS Ecological Subsection							
		FESA	Central Franciscan	Coastal Franciscan	Coastal Hills-Santa Rosa Plain	Humboldt Bay Flats and Terraces	Marin Hills and Valleys	Mount St. Helena Flows and Valleys	Northern Franciscan	Wiregrass Ridge
Plants										
Baker's larkspur	<i>Delphinium bakeri</i>	FE		X				X		
Contra Costa goldfields	<i>Lasthenia conjugens</i>	FE		X					X	
Kneeland Prairie penny-cress	<i>Thlaspi californicum</i>	FE	X							
yellow larkspur	<i>Delphinium luteum</i>	FE			X			X		
Wildlife										
California red-legged frog	<i>Rana draytonii</i>	FT		X	X			X	X	
chinook salmon	<i>Oncorhynchus (=Salmo) tshawytscha</i>	FT	X	X	X	X				X
green sturgeon (southern DPS)	<i>Acipenser medirostris</i>	FT			X	X	X	X		
marbled murrelet	<i>Brachyramphus marmoratus</i>	FT	X	X		X	X			X
northern spotted owl	<i>Strix occidentalis caurina</i>	FT	X	X						X
steelhead	<i>Oncorhynchus (=Salmo) mykiss</i>	FT		X	X			X	X	
Steller sea-lion	<i>Eumetopias jubatus</i>	FE		X				X		
tidewater goby	<i>Eucyclogobius newberryi</i>	FE	X	X	X	X	X			X
vernal pool fairy shrimp	<i>Branchinecta lynchi</i>	FT							X	
western snowy plover	<i>Charadrius alexandrinus nivosus</i>	FT	X	X			X	X		X

Note: Only USFS Ecological Sections and Subsection containing State park units are listed

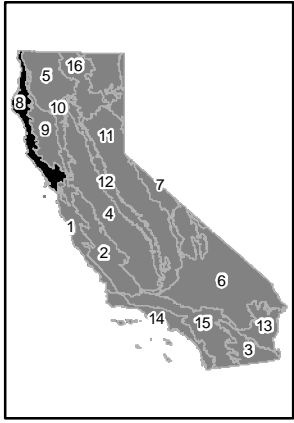
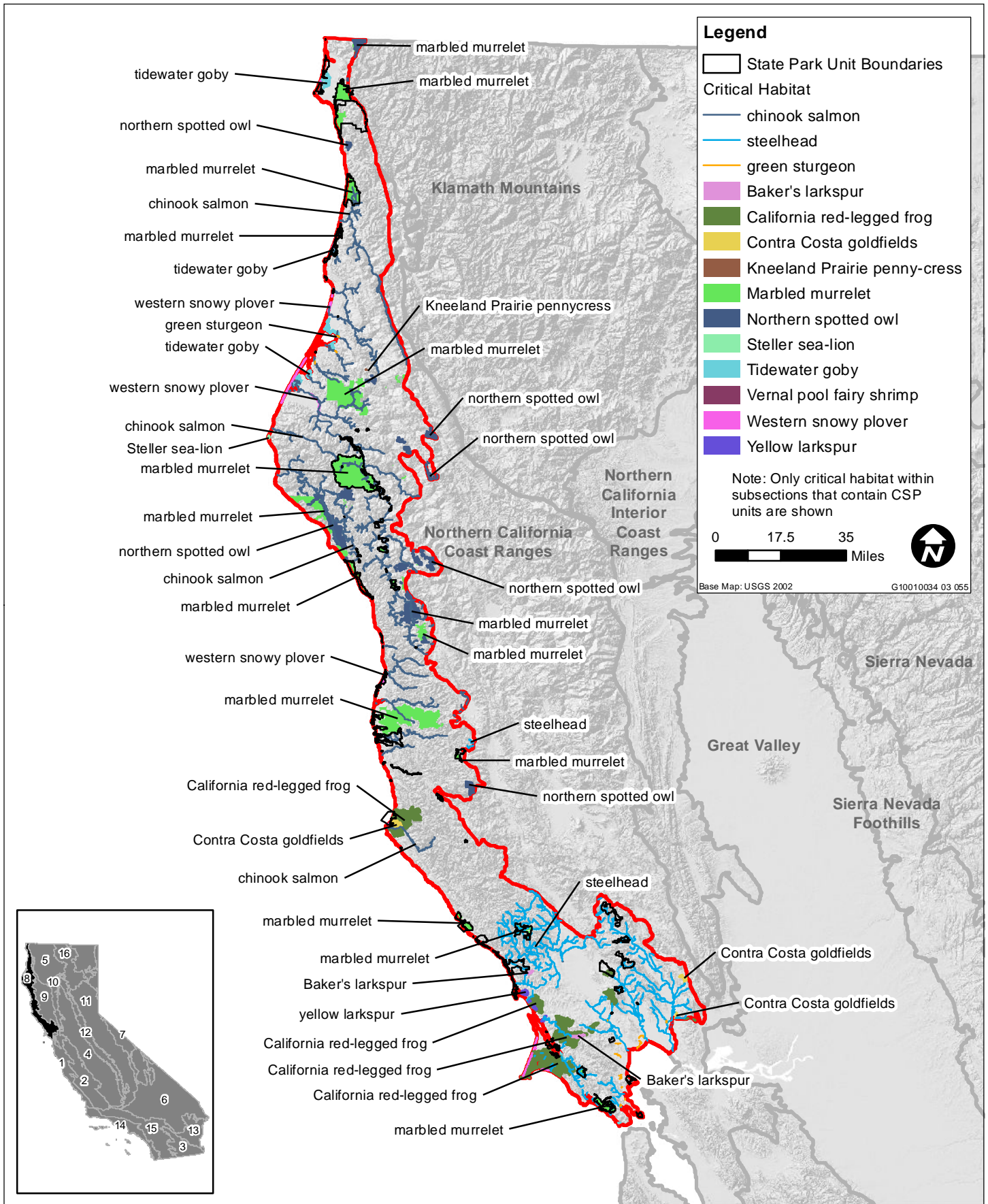
¹ Status definitions:

Federal Endangered Species Act (FESA):

FE Endangered

FT Threatened

Source: USFS 1997; USFWS 2011.



Source: Data received from CSP 2011, USFS 1997, USFWS 2011; Adapted by Ascent Environmental 2012

Map J-8b.

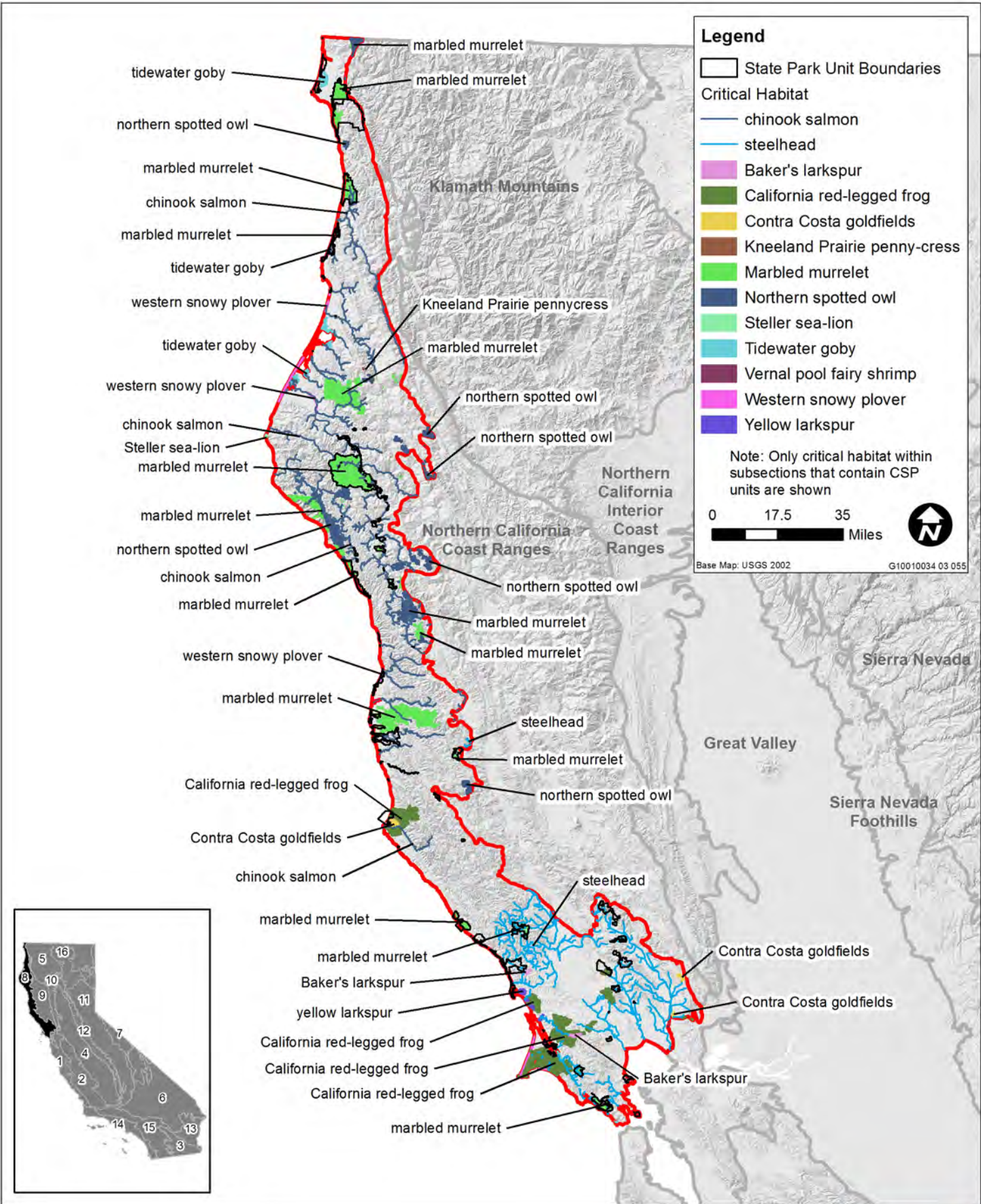
Northern California Coast - USFWS Critical Habitat and California State Park Units



Table J-9a. USFWS Critical Habitat in Ecological Sections and Subsections

Northern California Coast Ranges Section

Common Name	Scientific Name	Status ¹	USFS Ecological Subsection	
		FESA	Central Franciscan	Clear Lake Hills and Valleys
Plants				
slender Orcutt grass	<i>Orcuttia tenuis</i>	FT	X	
Wildlife				
chinook salmon	<i>Oncorhynchus (=Salmo) tshawytscha</i>	FT	X	
marbled murrelet	<i>Brachyramphus marmoratus</i>	FT	X	
northern spotted owl	<i>Strix occidentalis caurina</i>	FT	X	
steelhead	<i>Oncorhynchus (=Salmo) mykiss</i>	FT	X	
<p>Note: Only USFS Ecological Sections and Subsection containing State park units are listed</p> <p>¹ Status definitions: Federal Endangered Species Act (FESA): FE Endangered FT Threatened Source: USFS 1997; USFWS 2011.</p>				

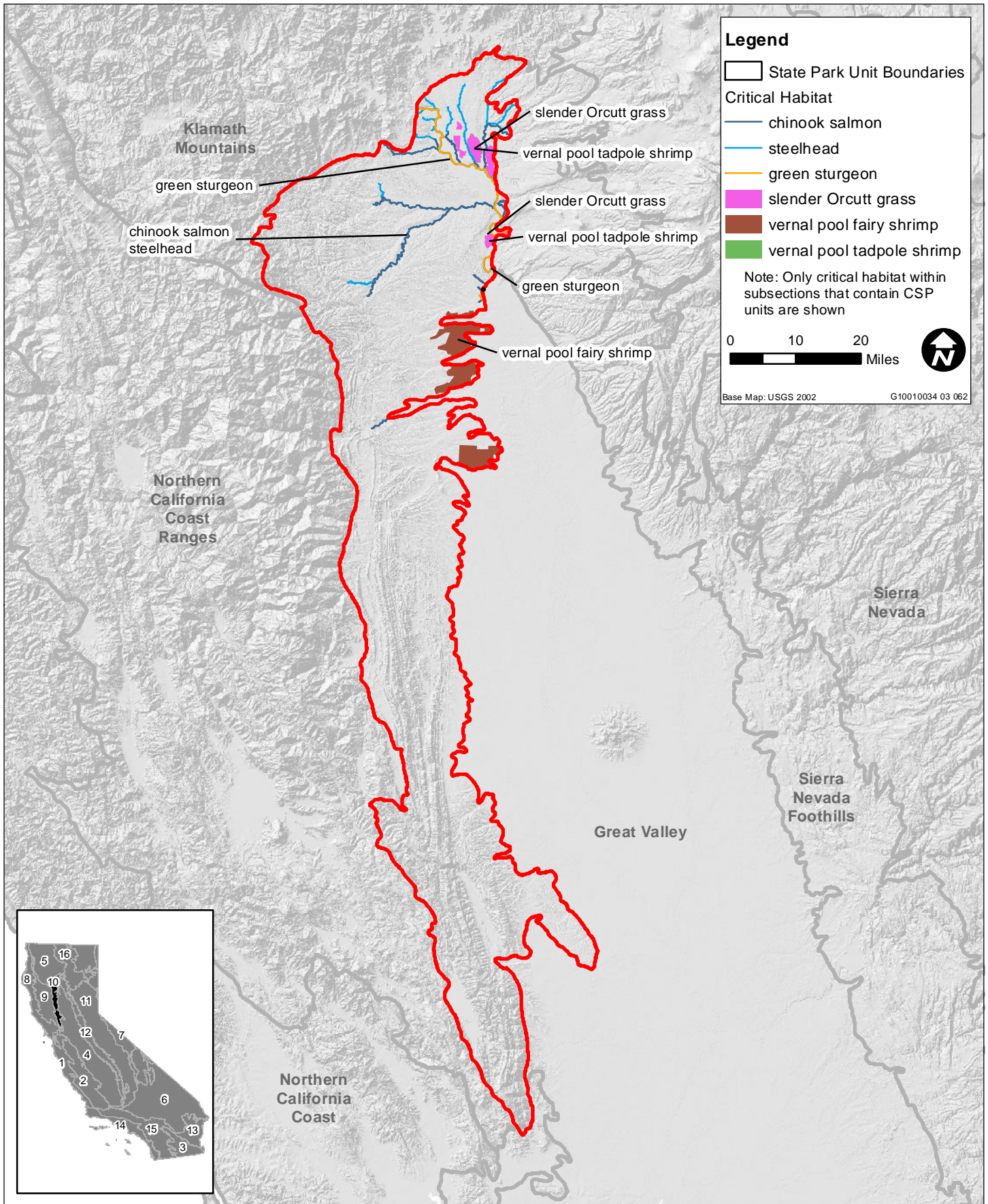


Source: Data received from CSP 2011, USFS 1997, USFWS 2011; Adapted by Ascent Environmental 2012

Table J-10a. USFWS Critical Habitat in Ecological Sections and Subsections

Northern California Interior Coast Ranges Section

Common Name	Scientific Name	Status ¹	USFS Ecological Subsection
		FESA	Tehama Terraces
Plants			
slender Orcutt grass	<i>Orcuttia tenuis</i>	FT	X
Wildlife			
chinook salmon	<i>Oncorhynchus (=Salmo) tshawytscha</i>	FT	X
green sturgeon (southern DPS)	<i>Acipenser medirostris</i>	FT	X
steelhead	<i>Oncorhynchus (=Salmo) mykiss</i>	FT	X
vernal pool fairy shrimp	<i>Branchinecta lynchi</i>	FT	X
vernal pool tadpole shrimp	<i>Lepidurus packardii</i>	FE	X
Note: Only USFS Ecological Sections and Subsection containing State park units are listed ¹ Status definitions: Federal Endangered Species Act (FESA): FE Endangered FT Threatened Source: USFS 1997; USFWS 2011.			

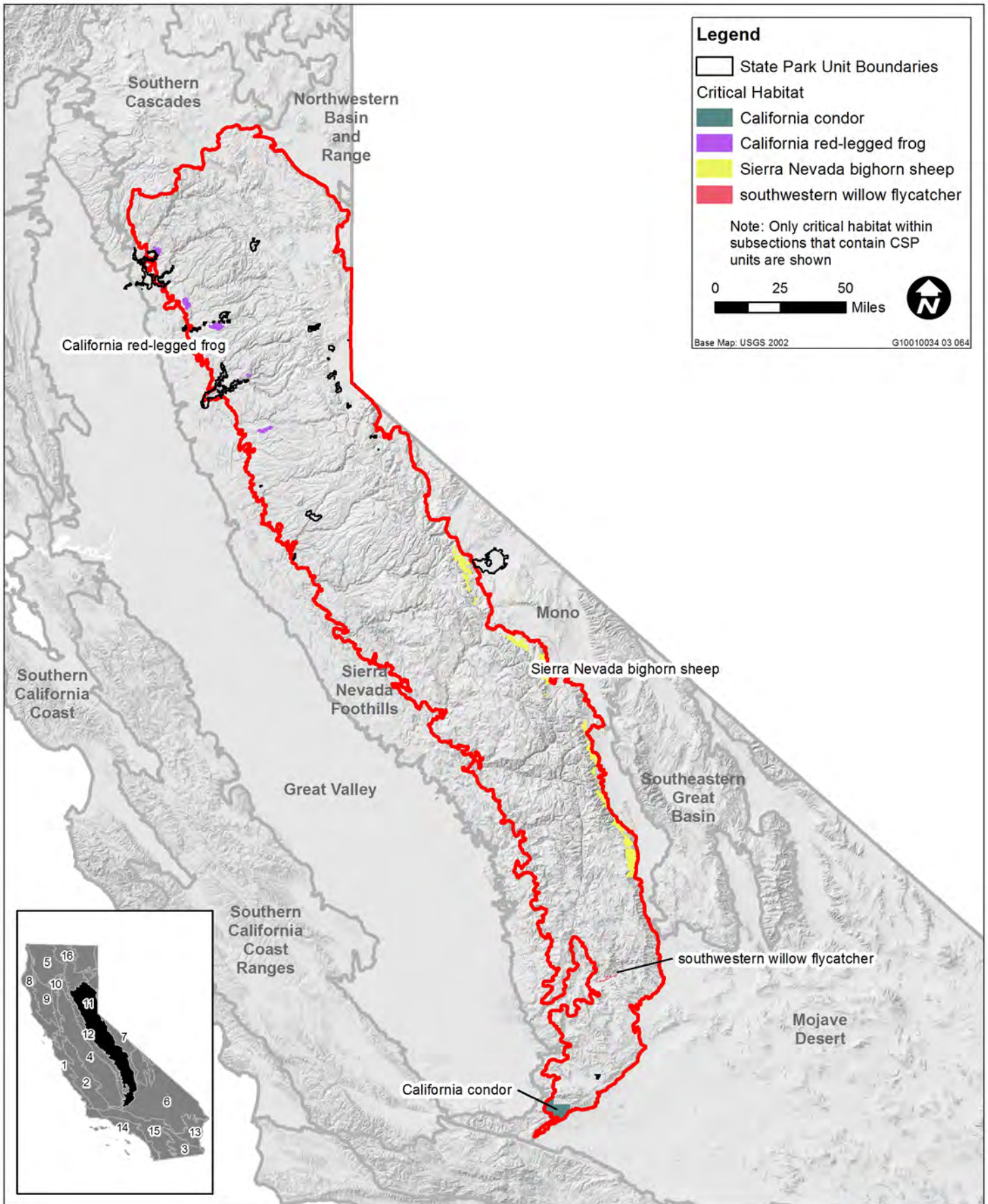


Source: Data received from CSP 2011, USFS 1997, USFWS 2011; Adapted by Ascent Environmental 2012

Table J-11a. USFWS Critical Habitat in Ecological Sections and Subsections

Sierra Nevada Section

Common Name	Scientific Name	Status ¹	USFS Ecological Subsection									
		FESA	Batholith and Volcanic Flows	Eastern Slopes	Glaciated Batholith and Volcanic Flows	Granitic and Metamorphic Foothills	Greenville-Graeagle	Tahoe Valley	Tahoe-Truckee	Tehachapi-Piute Mountains	Upper Batholith and Volcanic Flows	Upper Foothills Metamorphic Belt
Wildlife												
California condor	<i>Gymnogyps californianus</i>	FE	X		X							
California red-legged frog	<i>Rana draytonii</i>	FT		X		X						
Sierra Nevada bighorn sheep	<i>Ovis canadensis sierrae</i>	FE	X									
southwestern willow flycatcher	<i>Empidonax traillii extimus</i>	FE	X									
Note: Only USFS Ecological Sections and Subsection containing State park units are listed ¹ Status definitions: Federal Endangered Species Act (FESA): FE Endangered FT Threatened Source: USFS 1997; USFWS 2011.												

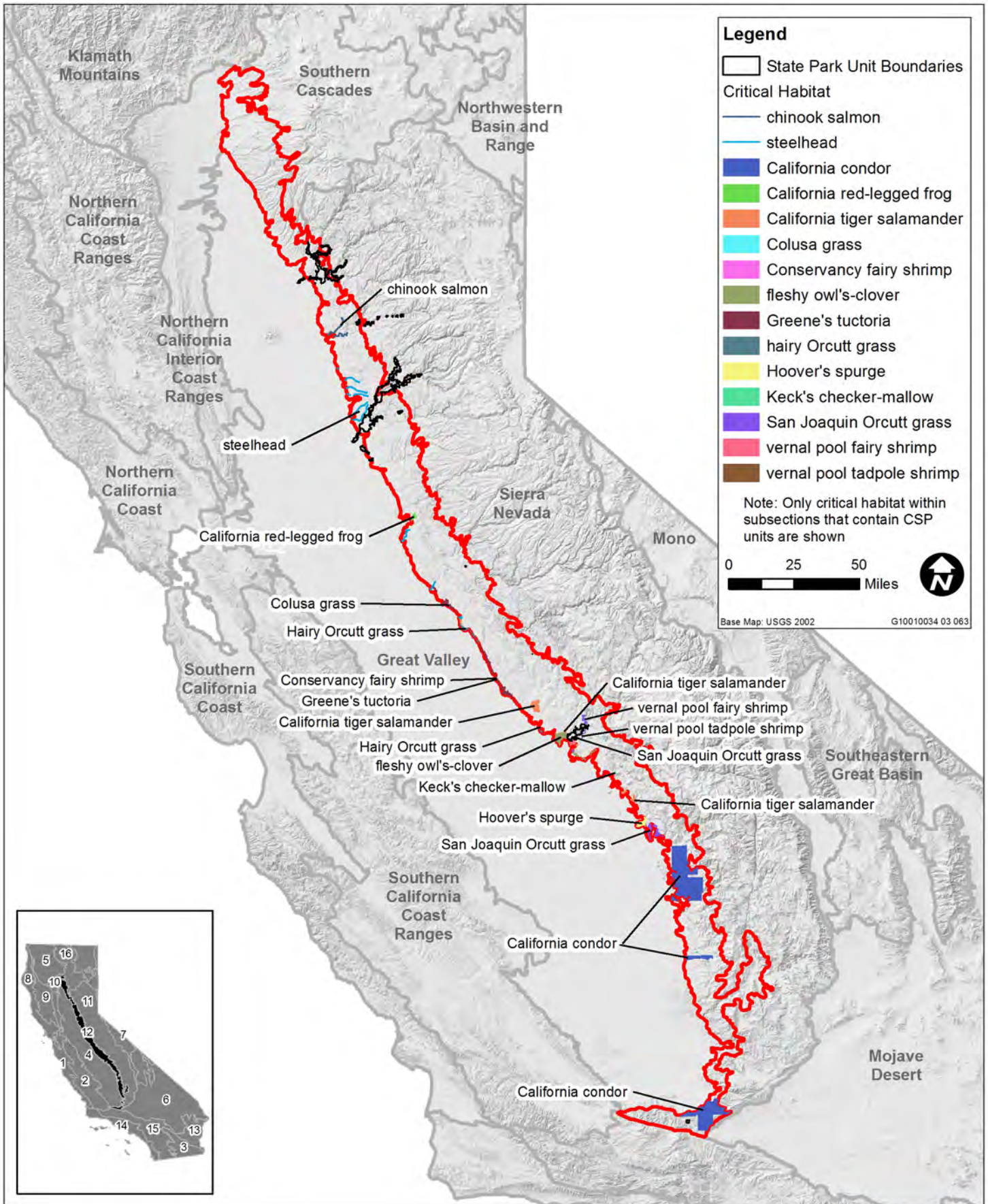


Source: Data received from CSP 2011, USFS 1997, USFWS 2011; Adapted by Ascent Environmental 2012

Table J-12a. USFWS Critical Habitat in Ecological Sections and Subsections

Sierra Nevada Foothills Section

Common Name	Scientific Name	Status ¹	USFS Ecological Subsection		
		FESA	Lower Foothills Metamorphic Belt	Lower Granitic Foothills	San Emigdio Mountains
Plants					
Colusa grass	<i>Neostapfia colusana</i>	FT	X		
fleshy owl's-clover	<i>Castilleja campestris ssp. succulenta</i>	FT	X	X	
Greene's tuctoria	<i>Tuctoria greenei</i>	FE	X		
hairy Orcutt grass	<i>Orcuttia pilosa</i>	FE	X	X	
Hoover's spurge	<i>Chamaesyce hooveri</i>	FT	X	X	
Keck's checker-mallow	<i>Sidalcea keckii</i>	FE		X	
San Joaquin Orcutt grass	<i>Orcuttia inaequalis</i>	FT	X	X	
Wildlife					
California condor	<i>Gymnogyps californianus</i>	FE		X	X
California red-legged frog	<i>Rana draytonii</i>	FT	X		
California tiger salamander	<i>Ambystoma californiense</i>	FT	X	X	
chinook salmon	<i>Oncorhynchus (=Salmo) tshawytscha</i>	FT	X		
Conservancy fairy shrimp	<i>Branchinecta conservatio</i>	FE	X		
steelhead	<i>Oncorhynchus (=Salmo) mykiss</i>	FT	X		
vernal pool fairy shrimp	<i>Branchinecta lynchi</i>	FT	X	X	
vernal pool tadpole shrimp	<i>Lepidurus packardii</i>	FE	X	X	
Note: Only USFS Ecological Sections and Subsection containing State park units are listed					
¹ Status definitions:					
Federal Endangered Species Act (FESA):					
FE Endangered					
FT Threatened					
Source: USFS 1997; USFWS 2011.					



Source: Data received from CSP 2011, USFS 1997, USFWS 2011; Adapted by Ascent Environmental 2012

Table J-13a. USFWS Critical Habitat in Ecological Sections and Subsections

Sonoran Desert Section

Common Name	Scientific Name	Status ¹	USFS Ecological Subsection
		FESA	Chocolate Mountains and Valleys
Wildlife			
desert tortoise	<i>Gopherus agassizii</i>	FT	X
razorback sucker	<i>Xyrauchen texanus</i>	FE	X

Note: Only USFS Ecological Sections and Subsection containing State park units are listed

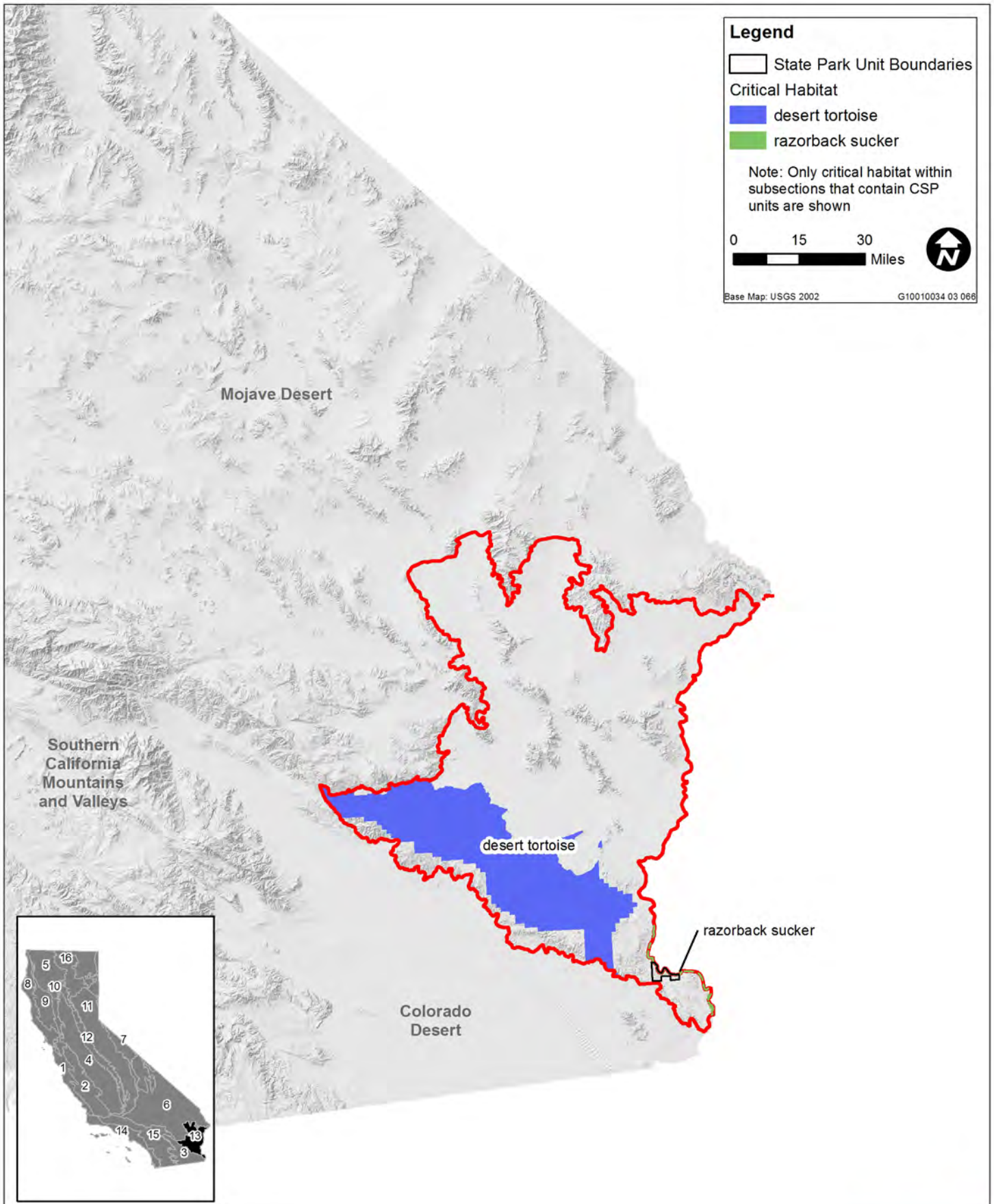
¹ Status definitions:

Federal Endangered Species Act (FESA):

FE Endangered

FT Threatened

Source: USFS 1997; USFWS 2011.



Source: Data received from CSP 2011, USFS 1997, USFWS 2011; Adapted by Ascent Environmental 2012

Table J-14a. USFWS Critical Habitat in Ecological Sections and Subsections

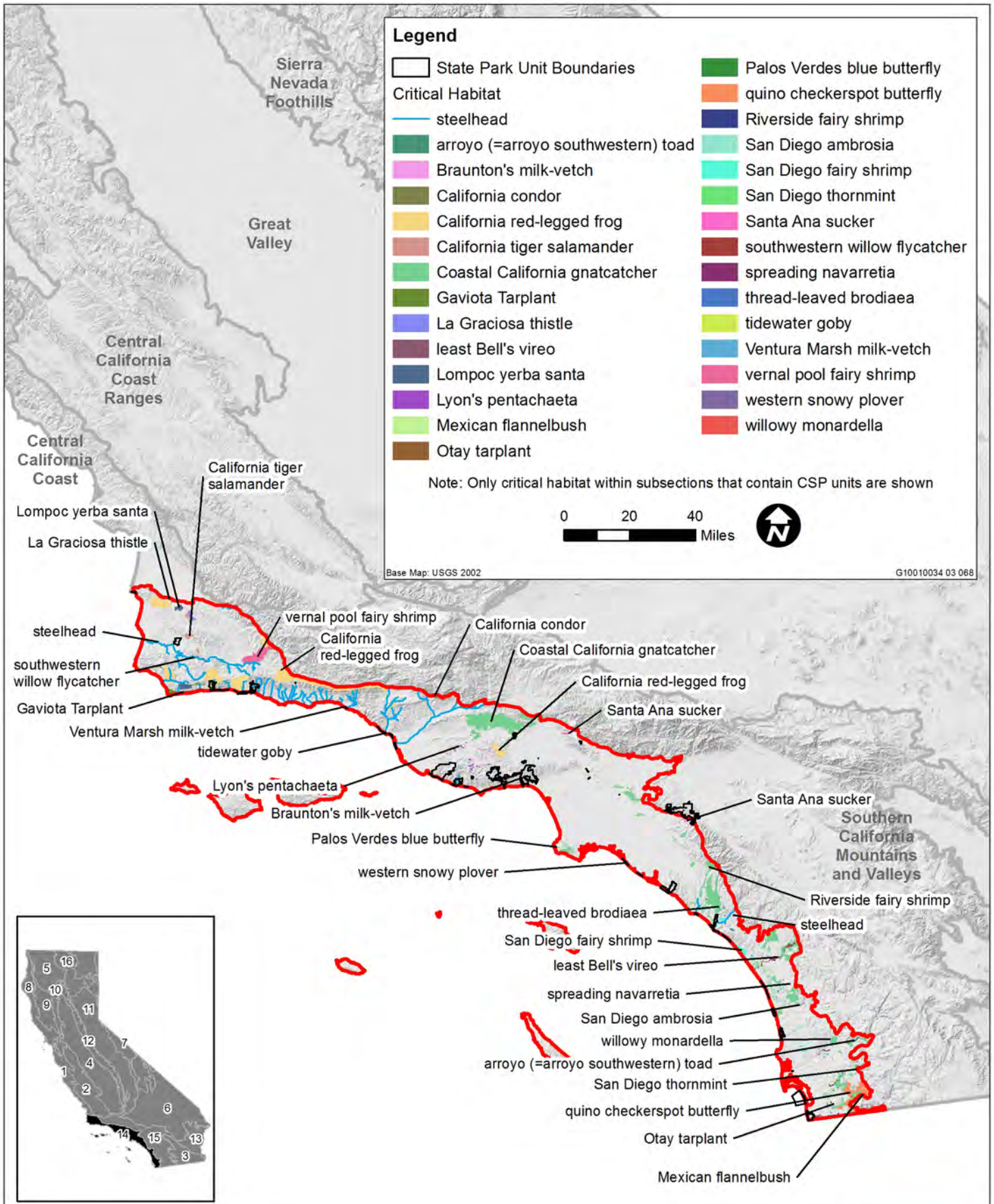
Southern California Coast Section

Common Name	Scientific Name	Status ¹	USFS Ecological Subsection							
		FESA	Coastal Hills	Coastal Terraces	Los Angeles Plain	Oxnard Plain-Santa Paula Valley	Santa Monica Mountains	Santa Ynez Valleys and Hills	Santa Ynez-Sulphur Mountains	Simi Valley-Santa Susana Mountains
Plants										
Braunton's milk-vetch	<i>Astragalus brauntonii</i>	FE	X			X		X		X
Gaviota tarplant	<i>Deinandra increscens ssp. villosa</i>	FE							X	
La Graciosa thistle	<i>Cirsium loncholepis</i>	FE						X		
Lompoc yerba santa	<i>Eriodictyon capitatum</i>	FE						X	X	
Lyon's pentachaeta	<i>Pentachaeta lyonii</i>	FE					X			X
Mexican flannelbush	<i>Fremontodendron mexicanum</i>	FE	X							
Otay tarplant	<i>Deinandra (=Hemizonia) conjugens</i>	FT	X	X						
San Diego ambrosia	<i>Ambrosia pumila</i>	FE	X							
San Diego thornmint	<i>Acanthomintha ilicifolia</i>	FT	X	X						
spreading navarretia	<i>Navarretia fossalis</i>	FT	X	X						
thread-leaved brodiaea	<i>Brodiaea filifolia</i>	FT	X	X	X					
Ventura Marsh milk-vetch	<i>Astragalus pycnostachyus var. lanosissimus</i>	FE				X			X	
willowy monardella	<i>Monardella linoidea ssp. viminea</i>	FE	X							

Table J-14a. USFWS Critical Habitat in Ecological Sections and Subsections

Southern California Coast Section

Common Name	Scientific Name	Status ¹	USFS Ecological Subsection							
		FESA	Coastal Hills	Coastal Terraces	Los Angeles Plain	Oxnard Plain-Santa Paula Valley	Santa Monica Mountains	Santa Ynez Valleys and Hills	Santa Ynez-Sulphur Mountains	Simi Valley-Santa Susana Mountains
Wildlife										
arroyo (=arroyo southwestern) toad	<i>Bufo californicus (=microscaphus)</i>	FE	X	X				X	X	
California condor	<i>Gymnogyps californianus</i>	FE							X	
California red-legged frog	<i>Rana draytonii</i>	FT						X	X	X
California tiger salamander	<i>Ambystoma californiense</i>	FE						X		
Coastal California gnatcatcher	<i>Polioptila californica californica</i>	FT	X	X	X	X				X
least Bell's vireo	<i>Vireo bellii pusillus</i>	FE	X	X		X			X	X
Palos Verdes blue butterfly	<i>Glaucopsyche lygdamus palosverdesensis</i>	FE			X					
quino checkerspot butterfly	<i>Euphydryas editha quino (=E. e. wrighti)</i>	FE	X	X						
Riverside fairy shrimp	<i>Streptocephalus woottoni</i>	FE	X	X						X
San Diego fairy shrimp	<i>Branchinecta sandiegonensis</i>	FE	X	X	X					
Santa Ana sucker	<i>Catostomus santaanae</i>	FT	X		X					
southwestern willow flycatcher	<i>Empidonax traillii extimus</i>	FE	X	X				X	X	
steelhead	<i>Oncorhynchus (=Salmo) mykiss</i>	FE	X	X		X	X	X	X	
tidewater goby	<i>Eucyclogobius newberryi</i>	FE				X	X		X	
vernal pool fairy shrimp	<i>Branchinecta lynchi</i>	FT					X	X	X	
western snowy plover	<i>Charadrius alexandrinus nivosus</i>	FT		X	X	X	X		X	
Note: Only USFS Ecological Sections and Subsection containing State park units are listed										
¹ Status definitions:										
Federal Endangered Species Act (FESA):										
FE Endangered										
FT Threatened										
Source: USFS 1997; USFWS 2011.										



Source: Data received from CSP 2011, USFS 1997, USFWS 2011; Adapted by Ascent Environmental 2012

Table J-15a. USFWS Critical Habitat in Ecological Sections and Subsections

Southern California Mountains and Valleys Section

Common Name	Scientific Name	Status ¹	USFS Ecological Subsection											
		FESA	Desert Slopes	Fontana Plan-Calimesa Terraces	Little San Bernardino-Bighorn Mountains	Northern Transverse Ranges	Palomar-Cuyamaca Park	Perris Valley and Hills	San Gorgonio Mountains	San Jacinto Foothills-Cahuilla Mountains	San Jacinto Mountains	Santa Ana Mountains	Upper San Gorgonio Mountains	Western Granitic Foothills
Plants														
ash-grey paintbrush	<i>Castilleja cinerea</i>	FT							X				X	
Bear Valley sandwort	<i>Arenaria ursina</i>	FT							X				X	
California taraxacum	<i>Taraxacum californicum</i>	FE							X				X	
Cushenbury buckwheat	<i>Eriogonum ovalifolium var. vineum</i>	FE			X				X				X	
Cushenbury milk-vetch	<i>Astragalus albens</i>	FE			X				X					
Cushenbury oxytheca	<i>Oxytheca parishii var. goodmaniana</i>	FE			X				X					
Mexican flannelbush	<i>Fremontodendron mexicanum</i>	FE												X
Munz's onion	<i>Allium munzii</i>	FE						X				X		
Nevin's barberry	<i>Berberis nevinii</i>	FE						X		X				
Parish's daisy	<i>Erigeron parishii</i>	FT			X				X				X	
San Bernardino bluegrass	<i>Poa atropurpurea</i>	FE					X		X				X	
San Bernardino Mountains bladderpod	<i>Lesquerella kingii ssp. bernardina</i>	FE							X				X	
San Diego ambrosia	<i>Ambrosia pumila</i>	FE						X				X		X
San Diego thornmint	<i>Acanthomintha ilicifolia</i>	FT												X
southern mountain wild-buckwheat	<i>Eriogonum kennedyi var. austromontanum</i>	FT							X				X	
spreading navarretia	<i>Navarretia fossalis</i>	FT						X				X		X
thread-leaved brodiaea	<i>Brodiaea filifolia</i>	FT						X				X		
Vail Lake ceanothus	<i>Ceanothus ophiochilus</i>	FT						X		X				

Table J-15a. USFWS Critical Habitat in Ecological Sections and Subsections

Southern California Mountains and Valleys Section

Common Name	Scientific Name	Status ¹	USFS Ecological Subsection											
		FESA	Desert Slopes	Fontana Plan-Calimesa Terraces	Little San Bernardino-Bighorn Mountains	Northern Transverse Ranges	Palomar-Cuyamaca Park	Perris Valley and Hills	San Gorgonio Mountains	San Jacinto Foothills-Cahuilla Mountains	San Jacinto Mountains	Santa Ana Mountains	Upper San Gorgonio Mountains	Western Granitic Foothills
arroyo (=arroyo southwestern) toad	<i>Bufo californicus (=microscaphus)</i>	FE		X	X	X	X	X	X	X	X	X	X	X
California condor	<i>Gymnogyps californianus</i>	FE				X								
California red-legged frog	<i>Rana draytonii</i>	FT				X								
coastal California gnatcatcher	<i>Polioptila californica californica</i>	FT		X				X		X		X		X
Conservancy fairy shrimp	<i>Branchinecta conservatio</i>	FE				X								
desert tortoise	<i>Gopherus agassizii</i>	FT			X									
Laguna Mountains skipper	<i>Pyrgus ruralis lagunae</i>	FE					X							
least Bell's vireo	<i>Vireo bellii pusillus</i>	FE	X	X							X			X
mountain yellow-legged frog	<i>Rana muscosa</i>	FE							X		X		X	
peninsular bighorn sheep	<i>Ovis canadensis nelsoni</i>	FE	X				X							
quino checkerspot butterfly	<i>Euphydryas editha quino (=E. e. wrighti)</i>	FE	X				X	X		X	X			X
San Bernardino Merriam's kangaroo rat	<i>Dipodomys merriami parvus</i>	FE		X				X	X	X				
San Diego fairy shrimp	<i>Branchinecta sandiegonensis</i>	FE										X		X
Santa Ana sucker	<i>Catostomus santaanae</i>	FT		X								X		
southwestern willow flycatcher	<i>Empidonax traillii extimus</i>	FE	X	X	X		X		X	X		X	X	X
steelhead	<i>Oncorhynchus (=Salmo) mykiss</i>	FE										X		
vernal pool fairy shrimp	<i>Branchinecta lynchi</i>	FT				X								

Note: Only USFS Ecological Sections and Subsection containing State park units are listed

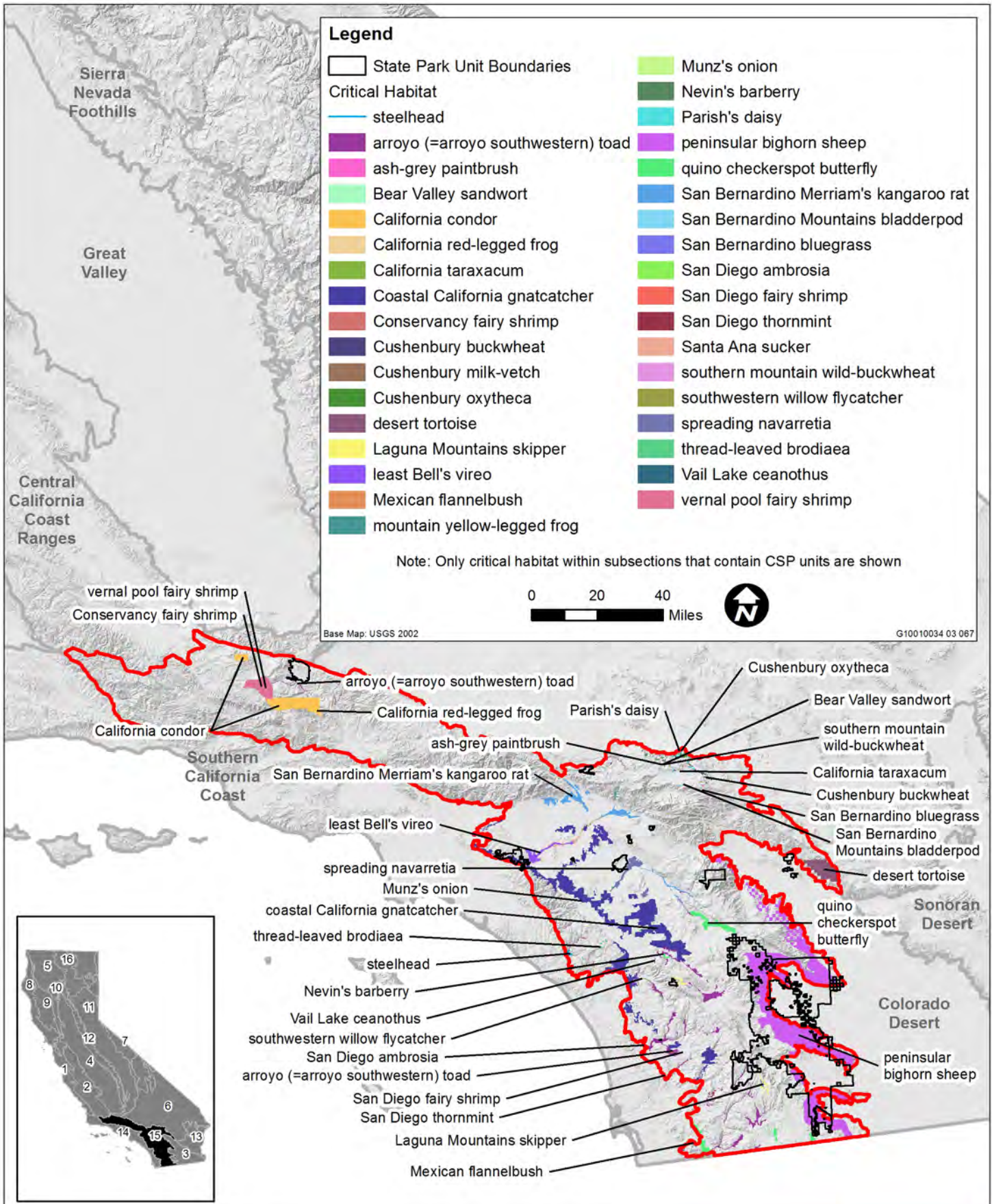
¹ Status definitions:

Federal Endangered Species Act (FESA):

FE Endangered

FT Threatened

Source: USFS 1997; USFWS 2011.

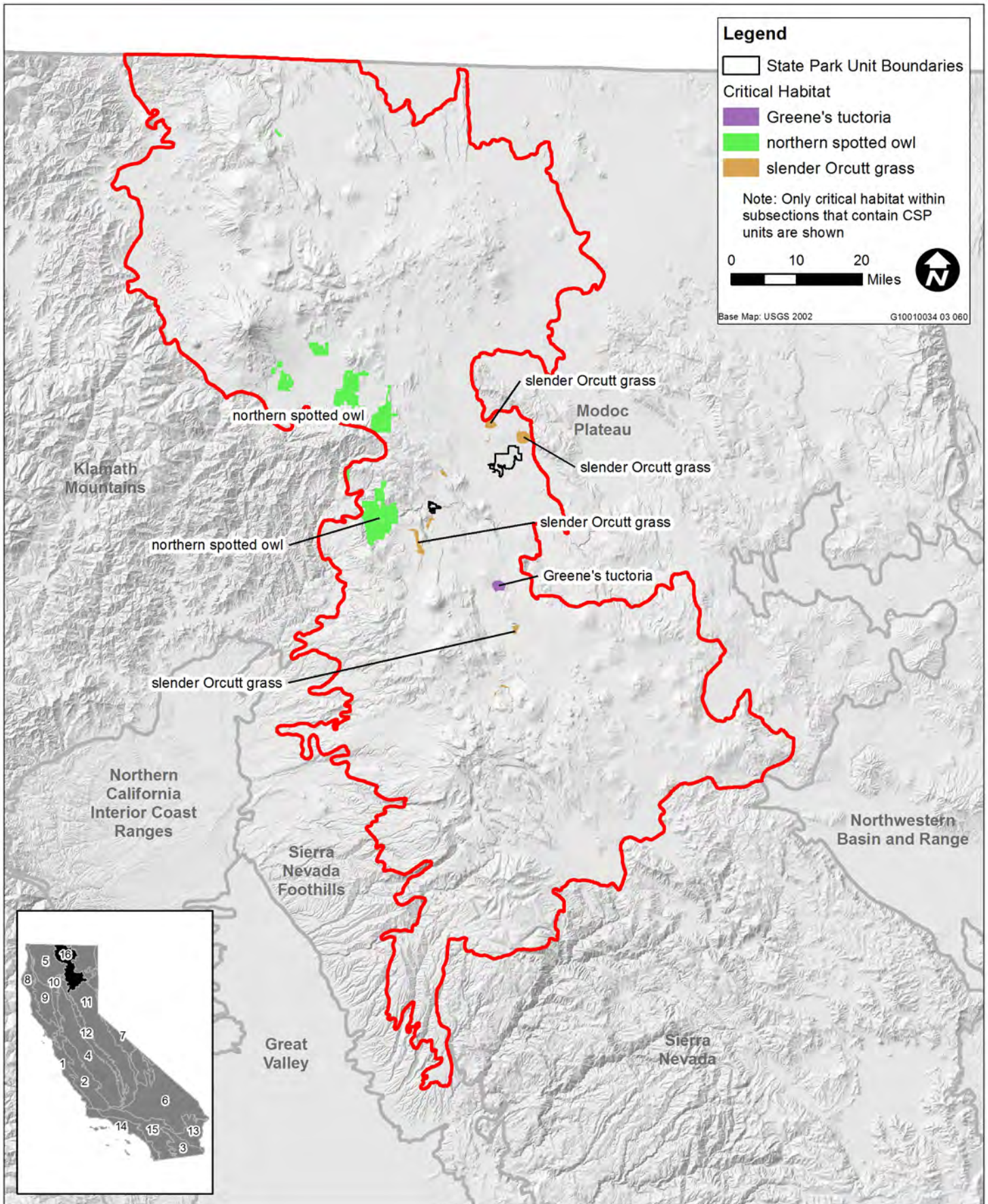


Source: Data received from CSP 2011, USFS 1997, USFWS 2011; Adapted by Ascent Environmental 2012

Table J-16a. USFWS Critical Habitat in Ecological Sections and Subsections

Southern Cascades Section

Common Name	Scientific Name	Status ¹	USFS Ecological Subsection	
		FESA	Hat Creek Rim	Medicine Lake Lava Flows
Plants				
Greene's tuctoria	<i>Tuctoria greenei</i>	FE	X	
slender Orcutt grass	<i>Orcuttia tenuis</i>	FT	X	X
Wildlife				
northern spotted owl	<i>Strix occidentalis caurina</i>	FT	X	X
Note: Only USFS Ecological Sections and Subsection containing State park units are listed ¹ Status definitions: Federal Endangered Species Act (FESA): FE Endangered FT Threatened Source: USFS 1997; USFWS 2011.				



Source: Data received from CSP 2011, USFS 1997, USFWS 2011; Adapted by Ascent Environmental 2012