

APPENDIX A
OVERVIEW OF MAINTENANCE ACTIVITIES

This page intentionally left blank.



Overview of Vegetation Management Activities for Electric Transmission Line 668087

October 23, 2009

For additional information, please contact:
Lorelei Phillips, Area Forester
(541) 776-5493
e-mail: lorelei.phillips@pacificorp.com

1.0 Purpose

The objective of PacifiCorp's vegetation management program is to manage tall growing vegetation under or around PacifiCorp's power lines in a cost effective and environmentally conscientious manner to provide safe and reliable power to its customers. Work is scheduled depending on line voltage, line importance, vegetation conditions, clearance requirements, location, predominant species' growth rates and other factors. Line 87, Del Norte to Yurok, is a 69kv line that requires vegetation management work to comply with state and federal clearance requirements. The Del Norte to Yurok transmission line is a radial feed. When a power outage occurs, electricity cannot be fed or looped in from another source. Vegetation conditions can often pose significant threats to transmission facilities, which can extend into lengthened power outages and safety risks for the public. Without the ability to feed this line from an alternative source during an outage, customers can be affected for several hours.

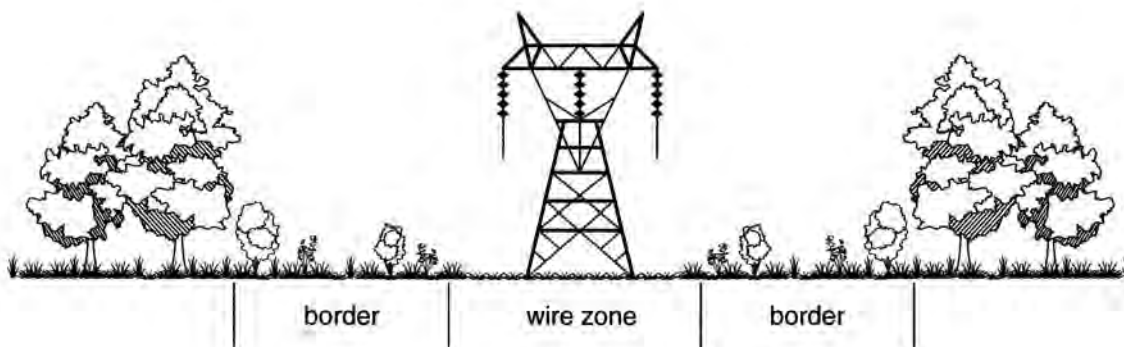
Vegetation that comes into contact with power line conductors can also cause wildfires, which can also be a threat to the public, wildlife and habitat within Del Norte and State Parks.

2.0 Integrated Vegetation Management and Wire Zone –Border Zone Technique

PacifiCorp uses integrated vegetation management (IVM) techniques to maintain vegetation within the transmission power line corridors. The goal of IVM on utility rights-of-way is to establish sustainable stable, low-growing plant communities that are compatible with power lines and discourage undesirable tall vegetation that could pose potential safety or reliability issues. The intent of IVM is to select a control method that removes undesirable vegetation, yet reduces the overall impact on the environment.

The Wire Zone, Border Zone technique is utilized to achieve the goals of removing undesirable vegetation where necessary and leaving lower-growing plant communities. See Figure 6.2 and 6.3 below from PacifiCorp's Transmission and Distribution Vegetation Management Program (PacifiCorp 12/08). Tree species that have the capability to grow into the facilities are removed in the wire zone, including coastal redwood, red alder, cascara, willow, sitka spruce and douglas fir. Lower growing grasses, plants and shrubs (under 5 feet at maturity) would be left, including some of the native species such as huckleberry, fern and salal. Tall shrubs or short trees (up to 25 feet in height at maturity) would be left in the border zone, including elderberry, rhodendron, etc.

Figure 6.2 Bramble and Byrnes Wire Zone - Border Zone (From Yahner, Bramble and Byrnes, 2001).



Picture 1. Example of post right of way clearing utilizing “Wire Zone – Border Zone” techniques on Cascade Siskiyou National Monument on Bureau of Land Management property. Low growing shrubs left in right of way. Shorter growing trees left in border zone.

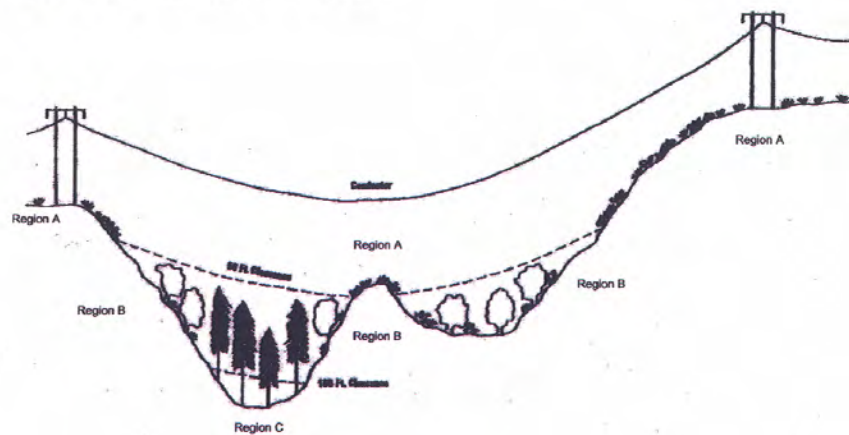


Picture 2. Additional example of post right of way clearing utilizing “Wire Zone – Border Zone” techniques on Cascade Siskiyou National Monument of Bureau of Land Management property. Low growing willow left in drainage, shorter growing oak trees left in border zone.



Tree removal also depends on under clearance regions depicted below in figure 6.3 from PacifiCorp's Transmission and Distribution Vegetation Management Program (PacifiCorp 12/08). In region "A" where the lines are less than 50 feet off the ground tall growing vegetation is removed and low growing shrubs and plants (under 5 feet at maturity) are left in the wire zone. In region "B" where the lines are between 50 feet and 100 feet off the ground, taking into account line sag, a border zone type community consisting of region "A" species can be left, as well as large shrubs and short growing trees. In region "C" where the lines are 100 feet or more off the ground tall growing trees can be left as long as they have 50 feet of clearance at maximum potential of line sag.

Figure 6.3. Under Clearance Regions



Region Definitions:

- Region A: Where conductor to ground clearance is less than 50 feet.
- Region B: Where conductor to ground clearances is more than 50, but less than 100 feet off the ground.
- Region C: Where conductor to ground clearances is greater than 100 feet off the ground.

Acceptable Region Plant Species:

- Region A: Grasses, legumes, ferns and low-growing shrubs (<5' at maturity).
- Region B: Region A species in addition to large shrubs and short-growing trees.
- Region C: All tree and shrub species.

Following removal of trees and saplings within the wire zone and border zones, an herbicide can be applied to the cut stumps to help prevent the re-growth of tall growing tree species. The herbicide is applied in small volumes only to the cut stump cambium layer. This would also eliminate the need to top or reduce the crowns of tall-growing trees under the facilities. PacifiCorp would like to propose the use of Accord, with the active ingredient glyphosphate, which has an aquatic label for the control of woody plants in forests and around aquatic sites suitable for use in wildlife habitat areas. Other potential herbicides that could be utilized are Milestone or Garlon 4. The use of this herbicide would also enable a lower sustainable native plant community to establish over time. This community would out-compete incompatible plant communities, and reduce the need for repetitive visits to Redwood National and State park with equipment and vehicles to maintain vegetation around the facilities.

Picture 3. Example of under-clearance regions. Where conductor to ground clearance is more than 50 feet, but less than 100 feet, region “A” species plus large shrubs and short-growing trees can be left. Where conductors are more than 100 feet off the ground all tree species can be left. Some very tall trees may need to be reduced or removed due to line sag and tree height potential.



Picture 4. Picture of typical vegetation growth under and adjacent to transmission power lines along Hamilton Road on Redwood State Park property.



Picture 5. Picture of vegetation growth under facilities near Boy Scout Road on Redwood State Park property.



Picture 6. Additional picture of vegetation growth near Boy Scout Road area.



3.0 PacifiCorp Clearance Specifications

Clearances and right of way widths are also determined by the type of pole structure or equipment in place. See figures 6.6 and 6.5 from PacifiCorp's Transmission and Distribution Vegetation Management Program (PacifiCorp 12/08).

Figure 6.6 Single pole structure clearances.

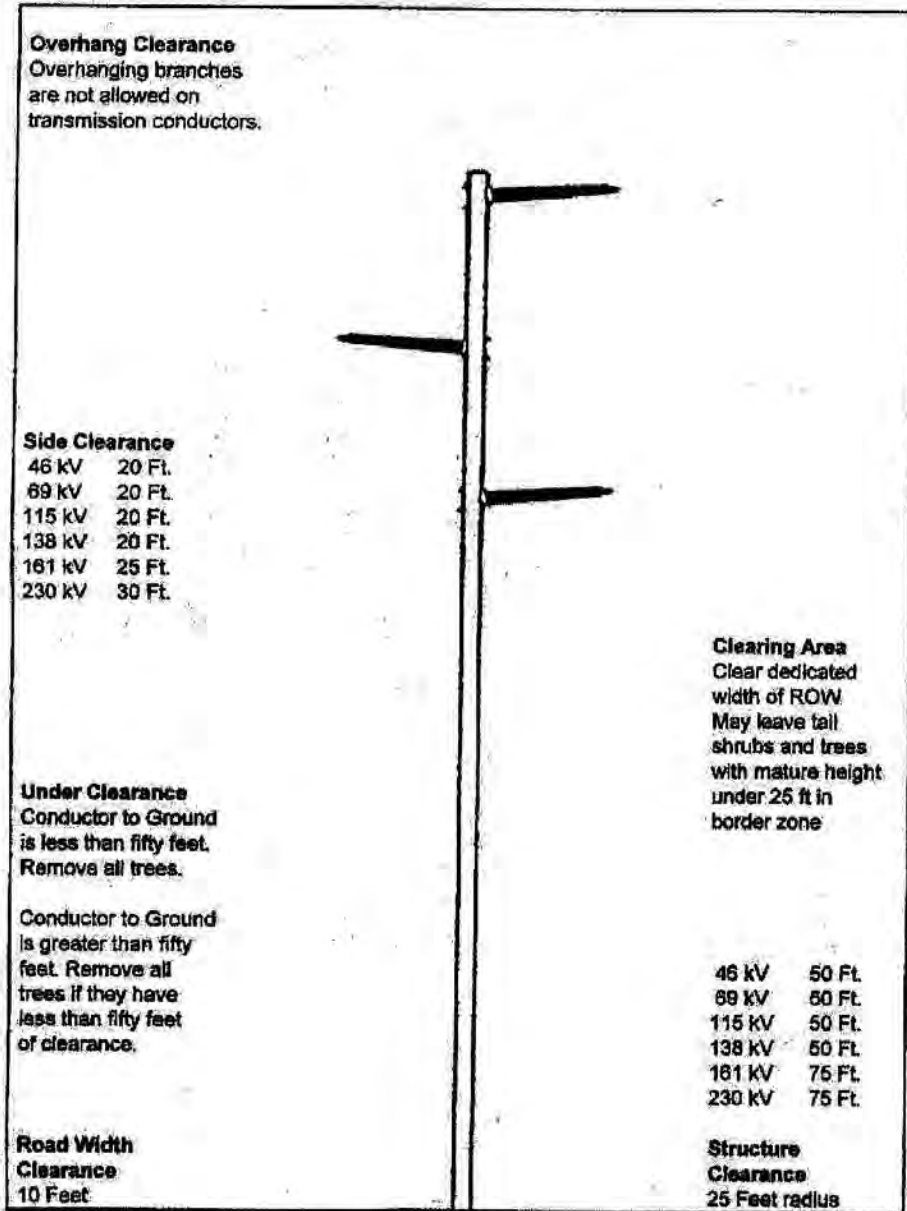
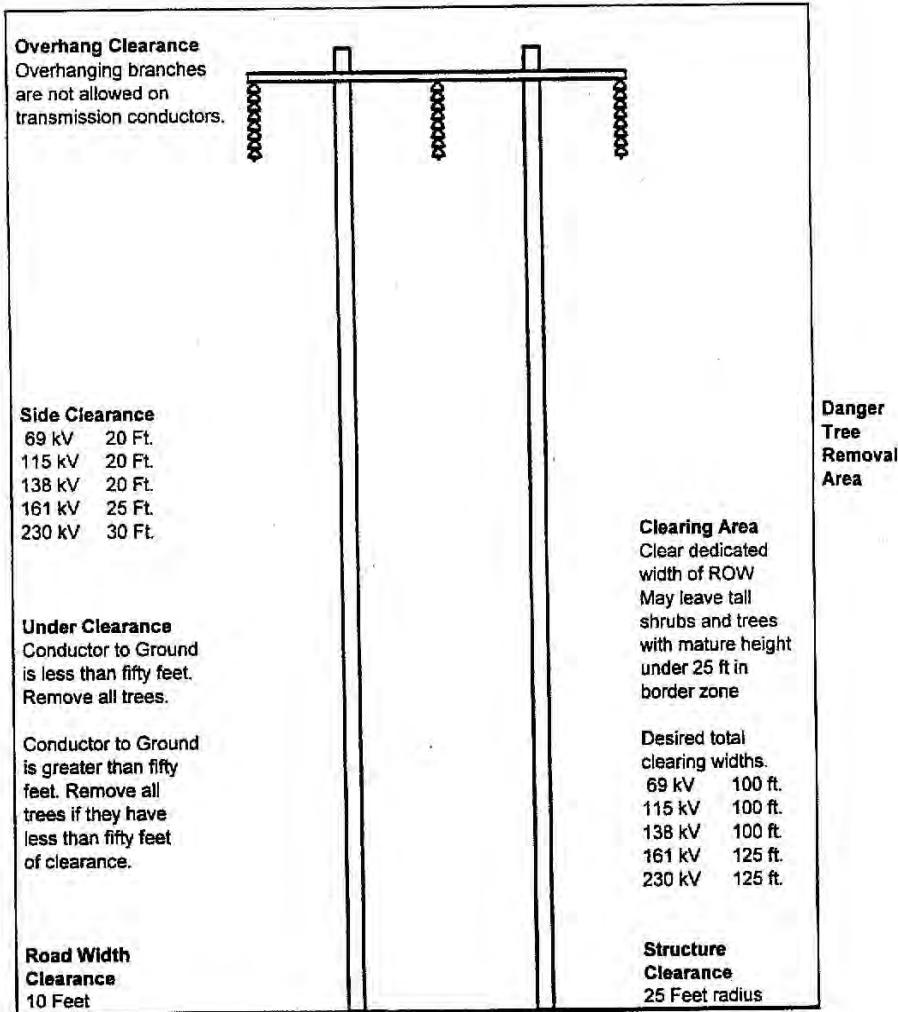


Figure 6.5. H-Structure clearances.



Trees and brush also need to be cleared for structures, 25 feet radius around “H” structures, 10 foot radius on single pole construction and a 5 feet radius around guy anchors. Clearance around the poles and equipment is necessary for climbing space, emergency access to equipment and to prevent equipment sparks from falling into vegetation and potentially starting a fire.

Picture 9. “H” structure poles requiring 25 feet of radial vegetation clearance off West Branch Road park spur.



Picture :. Example of 3-pole structure requiring 25 feet of radial clearance around poles.



Picture ; 0 Guy anchor requiring 5 feet of radial vegetation clearance for equipment protection.



NERC Vegetation Management Standard FAC – 003-1 (NERC 2006) requires that the utility has minimum clearances that are met following the work. The clearances are listed in Table 6.1 below from PacifiCorp’s Transmission and Distribution Vegetation Management Program (PacifiCorp 12/08).

Table 6.1 Transmission Clearances (in feet).

	500 kV	345 kV	230 kV	161 kV	138 kV	115 kV	69 kV	45 kV
³Minimum Flash Distances	14.7	9.4	5.1	3.4	2.9	2.5	1.3	N/A
Under and side clearance work thresholds (NERC Clearance 2)	25	20	15	10	10	10	10	5
^{*4}Minimum clearances following work (NERC Clearance 1)	50	40	25	25	25	25	25	25

Clearance 2 should be maintained at all times, considering the effects of ambient temperature on conductor sag under maximum design loading, and the effects of wind velocities on conductor sway.

³From NERC Vegetation Management Standard *FAC -003-1* (NERC 2006) referencing Institute of Electronic and Electrical Engineers (IEEE) Standard 516-2003. They represent maximum flash distances at specific voltages. PacifiCorp Clearance 2 exceeds these requirements.

⁴Note reliability and safety are most effectively protected through establishing and maintaining a right-of-way consistent with the wire zone-border zone technique (Figure 2). When the line is less than 50 feet off the ground, the wire zone should be cleared of all incompatible vegetation unless an easement fails to provide authority to do so.

4.0 Vegetation Management Work Adjacent to Water Bodies

Vegetation removal near streams or drainages can be minimal. Most trees in or adjacent to drainages can be pruned to meet post-work clearance requirements, while at the same time leaving sufficient vegetation to shade the area under the power line crossing. Some small diameter, taller growing trees can also be removed and the lower growing trees or saplings can be left to shade the drainage.

Picture 12. Small drainage along Hamilton Road where taller saplings can be removed or pruned and lower-growing saplings can be left to provide required post-work clearance and sufficient shade. Taller growing trees on side may require some side pruning to obtain clearance from outer conductors.



5.0 Right of Way Easements

Right of way clearing should conform to the widths indicated on the easement or permit.

PacifiCorp currently holds granted right of way easements on Del Norte/State Park. Each easement specifies a different width which is designated for the poles, wires and other equipment in place.

Table 1. Granted Right of Way Easements.

CALIFORNIA REDWOOD NATIONAL & STATE PARK				
Easement	Date	Pole #'s (Location)	Total Width	Easement Rights
Huffman 89-1287	May 28, 1954	11/12 – 17/12, Hamilton Road	20 Feet	Remove trees in right of way, remove trees outside of right of way (danger trees) that could hit, make clearing necessary.
Stimson Lumber 89-1292 Overhanging property	June 9, 1954	14/12 – 15/12, Hamilton Road	20 Feet	Remove trees in right of way, remove trees outside of right of way (danger trees) that could hit, make clearing necessary.
Miller et al C010-270	May 1, 1963	17/12 – 9/14, Hamilton Road	50 Feet	Remove or trim trees in right of way, trim those outside of right of way which could encroach on right of way, make clearing necessary.
Miller Timber 97-1172 A+G	July 30, 1997	13A/13 – 13B/13 (For equipment - new pole installed in 1997 between existing structures)	50 Feet (same as above)	Keep right of way and adjacent lands clear of all brush, trees, timber, structures and other hazards.
Miller Redwood C010-27	April 18, 1967	9/14 – 11/14, Hamilton Road to Moratorium Road area.	50 Feet	Keep right of way clear of brush, trees, timber and structures, the right to cut away now and in the future all trees outside of said right of way which might endanger said transmission lines.
Miller Timber 94-1491	July 21, 1993	11/14 – 2/20, Moratorium Road, access via Boyscout Road, West Branch Road and Wilson Creek Road.	100 Feet	Keep right of way clear of brush, trees, timber and structures, the right to cut away now and in the future all trees outside of said right of way which might endanger said transmission lines.

6.0 Environmental Compliance

PacifiCorp is dedicated to being compliant with any type of state or federal environmental requirements that must be completed prior to any vegetation management project work and discussions have been held with representatives of both state and national parks. With this project proposal in place, PacifiCorp hopes to gain better knowledge of exactly what steps will be required to move towards project initiation.

7.0 Description of Work and Equipment

Vegetation maintenance activities would be scheduled between avian nesting and breeding seasons, usually between mid-September and February of the following year.

Vegetation work along Hamilton Road can be accessed with a bucket truck, accompanied by a chipper to masticate the woody debris. Chips can be removed or broadcasted on site.

Vegetation that can be accessed off Boy Scout Road can be cleared with a rubber-tired tractor with a side mower attachment that can mulch trees between 1 to 8 inches in diameter. The mulch from the mower is left low to the ground and will easily decompose. With all methods, most lower-growing vegetation can be avoided and left in the utility right of way corridor.

Picture 11. Rubber tired tractor with side mower used to mulch small saplings and trees. Small tractor and side arm mower allow movement between trees and structures so low-growing vegetation can be left.



Some sections of the transmission line off West Branch, Wilson Creek and Flashlight Roads are inaccessible by vehicle. In these locations a hand crew can utilize a small 4x4 rubber-tired mule to access the work via park spur roads or old power line maintenance roads. The crews would also be required to follow the park backcountry road driving policy. In these poor access locations, the trunk limbs and vegetation can be lopped and scattered to a depth of 18 inches or lower to ensure quicker decomposition. This is a common practice accepted by the Cal Fire, the United States Forest Service and the Bureau of Land Management. No tree spikes will be utilized unless required for large hazardous tree removals. Larger logs, approximately 8 inches or more in diameter will be left entire in or adjacent to the right of way corridor. Some trees may have to be sectioned down for tree crew safety. Stumps can be left between 11-18 inches from ground level depending on diameter of tree removed.

Tall growing species will be removed within the wire and border zones including *Sequoia sempervirens*, *Psuedotsuga menziesii*, *Alnus rubra*, *Thuja plicata*, *Picea sitchensis*, *Rhamnus purshiana*, *Lithocarpus densiflorous*, *Arbutus menziessi*, *Acer macrophyllum* and some species of the *Salix* genus. Depending on wire height, suitable low growing species will be left including *Polystichum munitum*, *Rhododendron macrophyllum*, *Vaccinium spp.*, *Gaultheria shallon*, *Rhododendron occidentale*, *Sambucus nigra* and other native shrubs, grasses, wildflowers.

If herbicide is utilized the crew can apply a low volume of chemical to the cambium of the cut stump or a basal treatment of small stems. No aerial or spray type methods would be used to prevent non-target plants from being affected.

Dense vegetation has also grown in on power line access roads, which is making response to power outages and maintenance very difficult. Some roads may require some vegetation clearing or cutting of downed logs to access the transmission corridor. In future years, Pacific Power, may also recommend clearing access roads more thoroughly to be able to complete routine maintenance or respond to power outages or other emergencies.

All equipment and vehicles utilized for the project can be washed prior to entering the park to prevent the potential spread of disease.

State park representatives can be notified seven days in advance of proceeding with the work. Trees, Incorporated crews will have all necessary fire fighting tools required by Cal Fire during fire season. A pre-meeting will be held with Pacific Power, Trees, Incorporated, park representatives and other agencies to ensure that the work is compliant with restrictions or requirements from the result of environmental assessments, federal and state clearance regulations, right of way easements, treatment prescriptions and other items pertinent to the area of work. All Pacific Power and Trees, Incorporated contact information will be left with all necessary agencies and personnel.

8.0 Work Follow-Up

To ensure work is compliant with all necessary requirements, the area forester will be completing audits of the completed work. Any failure to comply with project requirements or regulations will be reported to necessary agencies and corrected.

This page intentionally left blank

APPENDIX B
SPECIES LIST: PLANTS

This page intentionally left blank.

APPENDIX B
SENSITIVE SPECIES LIST: PLANTS

Appendix B: Sensitive plant species occurring in the assessment area. Assessment area defined as the USGS 7.5' quadrangle within which the project is located (Childs Hill) and the seven quadrangles that surround it (Crescent City, Sister Rocks, Cant Hook Mountain, Gasquet, Hiouchi, Requa, and Klamath Glen) (CNPS 2013). F = federal designation, S = state designation, California Native Plant Society (CNPS) = California Rare Plant Rank.

Species	Status ¹			Habitat	Comments
	F	S	CNPS		
<i>Arctostaphylos nortensis</i> Del Norte manzanita			4.3	Often serpentinite. Chaparral, Lower montane coniferous forest 500-800 m	Potential to occur; habitat present in project area. Known to occur in MCW.
<i>Arnica cernua</i> serpentine arnica			4.3	Lower montane coniferous forest (serpentinite) 500-1920 m	Potential to occur; habitat present in project area. Known to occur in MCW
<i>Castilleja brevilobata</i> short-lobed paintbrush			4.2	Lower montane coniferous forest (serpentinite, edges and openings) 120-1700 m	Potential to occur; habitat present in project area. Known to occur in MCW.
<i>Darlingtonia californica</i> California pitcherplant			4.2	Mesic, generally serpentinite seeps. Bogs and fens, Meadows and seeps 0-2585 m	Potential to occur; habitat present in project area. Known to occur in MCW.
<i>Horkelia sericata</i> Howell's horkelia			4.3	Serpentinite, clay. Chaparral, Lower montane coniferous forest 60-1200 m	Potential to occur; habitat present in project area. Known to occur in MCW
<i>Iris innominata</i> Del Norte County iris			4.3	Lower montane coniferous forest (serpentinite) 300-2000 m	Potential to occur; habitat present in project area. Known to occur in MCW
<i>Lathyrus delnorticus</i> Del Norte pea			4.3	Often serpentinite. Lower montane coniferous forest, North Coast coniferous forest 30-1450 m	Potential to occur; habitat present in project area. Known to occur in MCW.
<i>Lilium bolanderi</i> Bolander's lily			4.2	Serpentinite. Chaparral, Lower montane coniferous forest 30-1600 m	Potential to occur; habitat present in project area. Known to occur in MCW.
<i>Listera cordata</i> heart-leaved twayblade			4.2	Bogs and fens, Lower montane coniferous forest, North Coast coniferous forest 5-1370 m	Potential to occur; habitat present in project area. Known to occur in MCW.

APPENDIX B
SENSITIVE SPECIES LIST: PLANTS

Species	Status ¹			Habitat	Comments
	F	S	CNPS		
<i>Lomatium howellii</i> Howell's lomatium			4.3	Serpentinite. Chaparral, Lower montane coniferous forest 110-1705 m	Potential to occur; habitat present in project area. Known to occur in MCW.
<i>Mitellastra caulescens</i> leafy-stemmed mitrewort			4.2	Mesic, sometimes roadsides. Broadleafed upland forest, Lower montane coniferous forest, Meadows and seeps, North Coast coniferous forest 5-1700 m	Potential to occur; habitat present in project area. Known to occur in MCW.
<i>Oxalis suksdorfii</i> Suksdorf's wood-sorrel			4.3	Broadleafed upland forest, North Coast coniferous forest 15-700 m	Potential to occur; habitat present in project area. Known to occur in MCW.
<i>Piperia candida</i> white-flowered rein orchid			1B.2	Sometimes serpentinite. Broadleafed upland forest, Lower montane coniferous forest, North Coast coniferous forest 30-1310 m	Potential to occur; habitat present in project area. Known to occur in MCW.
<i>Pleuropogon refractus</i> nodding semaphore grass			4.2	Mesic. Lower montane coniferous forest, Meadows and seeps, North Coast coniferous forest, Riparian forest	Potential to occur; habitat present in project area. Known to occur in MCW.
<i>Sidalcea malachroides</i> maple-leaved checkerbloom			4.2	Often in disturbed areas. Broadleafed upland forest, Coastal prairie, Coastal scrub, North Coast coniferous forest, Riparian woodland 2-730 m	Likely to occur; habitat and CNDDDB known occurrence within project area.
<i>Antennaria suffrutescens</i> evergreen everlasting			4.3	Lower montane coniferous forest (serpentinite) 500-1600 m	Potential to occur; habitat present in project area.
<i>Arabis mcdonaldiana</i> McDonald's rock cress	FE	CE	1B.1	Serpentinite: Lower montane coniferous forest, Upper montane coniferous forest 135-1800 m	Potential to occur; habitat present in project area.
<i>Arctostaphylos hispidula</i> Howell's manzanita			4.2	Chaparral (serpentinite or sandstone) 120-1250 m	Potential to occur; habitat present in project area.
<i>Arnica spathulata</i> Klamath arnica			4.3	Lower montane coniferous forest (serpentinite) 640-1800 m	Potential to occur; habitat present in project area.
<i>Asplenium trichomanes ssp. trichomanes</i> maidenhair spleenwort			2.1	Lower montane coniferous forest (rocky) 185-200 m	Potential to occur; habitat present in project area.

APPENDIX B
SENSITIVE SPECIES LIST: PLANTS

Species	Status ¹			Habitat	Comments
	F	S	CNPS		
<i>Boechera koehleri</i> (= <i>Arabis koehleri</i> var. <i>stipitata</i>) Koehler's stipitate rockcress			1B.3	Serpentinite, rocky: Chaparral, Lower montane coniferous forest 155-1660 m	Potential to occur; habitat present in project area.
<i>Calamagrostis foliosa</i> leafy reed grass		CR	4.2	Rocky. Coastal bluff scrub, North Coast coniferous forest 0-1220 m	Potential to occur; habitat present in project area.
<i>Calystegia atriplicifolia</i> ssp. <i>buttensis</i> Butte County morning-glory			4.2	Rocky, sometimes roadside. Chaparral, Lower montane coniferous forest 565-1524 m	Potential to occur; habitat present in project area.
<i>Carex leptalea</i> bristle-stalked sedge			2.2	Bogs and fens, Meadows and seeps (mesic), Marshes and swamps 0-700 m	Potential to occur; habitat present in project area.
<i>Carex praticola</i> northern meadow sedge			2.2	Meadows and seeps (mesic) 0-3200 m	Potential to occur; habitat present in project area.
<i>Carex serpenticola</i> serpentine sedge			2.3	Meadows and seeps (mesic, serpentinite) 60-1200	Potential to occur; habitat present in project area.
<i>Carex viridula</i> var. <i>viridula</i> green yellow sedge			2.3	Bogs and fens, Marshes and swamps (freshwater), North Coast coniferous forest (mesic) 0-1600 m	Potential to occur; habitat present in project area.
<i>Calystegia atriplicifolia</i> ssp. <i>buttensis</i> Butte County morning-glory			4.2	Rocky, sometimes roadside. Chaparral, Lower montane coniferous forest 565-1524 m	Potential to occur; habitat present in project area.
<i>Cardamine angulata</i> seaside bittercress			2.1	Lower montane coniferous forest, North Coast coniferous forest/Wet areas, streambanks 65-915 m	Potential to occur; habitat present in project area.
<i>Cardamine nuttallii</i> var. <i>gemmata</i> yellow-tubered toothwort			3.3	Serpentinite. Lower montane coniferous forest, North Coast coniferous forest 100-700 m	Potential to occur; habitat present in project area.
<i>Cascadia nuttallii</i> Nuttall's saxifrage			2.1	North Coast coniferous forest (mesic, rocky) 40-75 m	Potential to occur; habitat present in project area.
<i>Castilleja miniata</i> ssp. <i>elata</i> Siskiyou paintbrush			2.2	Often serpentinite. Bogs and fens, Lower montane coniferous forest (seeps) 0-1750 m	Potential to occur; habitat present in project area.
<i>Coptis laciniata</i> Oregon goldthread			2.2	Mesic. Meadows and seeps, North Coast coniferous forest (streambanks) 0-1000 m	Potential to occur; habitat present in project area.

APPENDIX B
SENSITIVE SPECIES LIST: PLANTS

Species	Status ¹			Habitat	Comments
	F	S	CNPS		
<i>Cypripedium californicum</i> California lady's-slipper			4.2	Seeps and streambanks, usually serpentinite. Bogs and fens, Lower montane coniferous forest 30-2750 m	Potential to occur; habitat present in project area.
<i>Eriogonum pendulum</i> Waldo wild buckwheat			2.2	Serpentinite. Lower montane coniferous forest, Upper montane coniferous forest 230-1000 m	Potential to occur; habitat present in project area.
<i>Erythronium hendersonii</i> Henderson's fawn lily			2.3	Lower montane coniferous forest 300-1600 m	Potential to occur; habitat present in project area.
<i>Erythronium howellii</i> Howell's fawn lily			1B.3	Sometimes serpentinite. Lower montane coniferous forest, North Coast coniferous forest 200-1145 m	Potential to occur; habitat present in project area.
<i>Erythronium oregonum</i> giant fawn lily			2.2	Sometimes serpentinite, rocky, openings. Cismontane woodland, Meadows and seeps 100-1150 m	Potential to occur; habitat present in project area.
<i>Erythronium revolutum</i> coast fawn lily			2.2	Mesic, streambanks. Bogs and fens, Broadleafed upland forest, North Coast coniferous forest 0-1600 m	Potential to occur; habitat present in project area.
<i>Fissidens pauperculus</i> minute pocket moss			1B.2	North Coast coniferous forest (damp coastal soil) 10-1024 m	Potential to occur; habitat present in project area.
<i>Gentiana setigera</i> Mendocino gentian			1B.2	Mesic. Lower montane coniferous forest, Meadows and seeps 490-1065 m	Potential to occur; habitat present in project area.
<i>Gilia capitata ssp. pacifica</i> Pacific gilia			1B.2	Coastal bluff scrub, Chaparral (openings), Coastal prairie, Valley and foothill grassland 5-869 m	Potential to occur; habitat present in project area.
<i>Iris bracteata</i> Siskiyou iris			3.3	Serpentinite. Broadleafed upland forest, Lower montane coniferous forest 180-1070 m	Potential to occur; habitat present in project area.
<i>Iris tenax ssp. klamathensis</i> Orleans iris			4.3	Lower montane coniferous forest (often in disturbed areas) 100-1400 m	Potential to occur; habitat present in project area.
<i>Lathyrus palustris</i> marsh pea			2.2	Mesic. Bogs and fens, Coastal prairie, Coastal scrub, Lower montane coniferous forest, Marshes and swamps, North Coast coniferous forest 1-100 m	Potential to occur; habitat present in project area.
<i>Lewisia oppositifolia</i> opposite-leaved lewisia			2.2	Lower montane coniferous forest (mesic) 300-1220 m	Potential to occur; habitat present in project area.
<i>Lilium kelloggii</i> Kellogg's lily			4.3	Openings, roadsides. Lower montane coniferous forest, North Coast coniferous forest 3-1300 m	Potential to occur; habitat present in project area.

APPENDIX B
SENSITIVE SPECIES LIST: PLANTS

Species	Status ¹			Habitat	Comments
	F	S	CNPS		
<i>Lilium occidentale</i> western lily	FE	CE	1B.1	Bogs and fens, Coastal bluff scrub, Coastal prairie, Coastal scrub, Marshes and swamps (freshwater), North Coast coniferous forest (openings) 2-185 m	Potential to occur; habitat present in project area.
<i>Lilium pardalinum ssp. vollmeri</i> Vollmer's lily			4.3	Bogs and fens, Meadows and seeps (mesic) 30-1680 m	Potential to occur; habitat present in project area.
<i>Lomatium martindalei</i> Coast Range lomatium			2.3	Coastal bluff scrub, Lower montane coniferous forest, Meadows and seeps 240-3000 m	Potential to occur; habitat present in project area.
<i>Lycopodium clavatum</i> running-pine			4.1	Often edges, openings, and roadsides. Lower montane coniferous forest (mesic), Marshes and swamps, North Coast coniferous forest (mesic) 45-1225 m	Potential to occur; habitat present in project area.
<i>Minuartia howellii</i> Howell's sandwort			1B.3	Serpentinite, xeric. Chaparral, Lower montane coniferous forest 550-1000 m	Potential to occur; habitat present in project area.
<i>Monotropa uniflora</i> ghost-pipe			2.2	Broadleafed upland forest, North Coast coniferous forest 10-550 m	Potential to occur; Habitat present in project area.
<i>Oenothera wolfii</i> Wolf's evening-primrose			1B.1	Sandy, usually mesic. Coastal bluff scrub, Coastal dunes, Coastal prairie, Lower montane coniferous forest 3-800 m	Potential to occur; habitat present in project area.
<i>Packera bolanderi var. bolanderi</i> seacoast ragwort			2.2	Sometimes roadsides. Coastal scrub, North Coast coniferous forest 30-650 m	Potential to occur; habitat present in project area.
<i>Packera hesperia</i> western ragwort			2.2	Serpentinite. Meadows and seeps, Upper montane coniferous forest 500-2500 m	Potential to occur; habitat present in project area.
<i>Perideridia gairdneri ssp. gairdneri</i> Gairdner's yampah			4.2	Vernally mesic. Broadleafed upland forest, Chaparral, Coastal prairie, Valley and foothill grassland, Vernal pools 0-365 m	Potential to occur; habitat present in project area.
<i>Pinguicula macroceras</i> horned butterwort			2.2	Bogs and fens (serpentinite) 40-1920 m	Potential to occur; habitat present in project area.
<i>Pityopus californica</i> California pinefoot			4.2	Mesic. Broadleafed upland forest, Lower montane coniferous forest, North Coast coniferous forest, Upper montane coniferous forest 15-2225 m	Potential to occur; habitat present in project area.
<i>Polemonium carneum</i> Oregon polemonium			2.2	Coastal prairie, Coastal scrub, Lower montane coniferous forest 0-1830 m	Potential to occur; habitat present in project area.

APPENDIX B
SENSITIVE SPECIES LIST: PLANTS

Species	Status ¹			Habitat	Comments
	F	S	CNPS		
<i>Potamogeton foliosus ssp. fibrillosus</i> fibrous pondweed			2.3	Marshes and swamps (assorted shallow freshwater) 5-1300 m	Potential to occur; habitat present in project area.
<i>Prosartes parvifolia</i> Siskiyou bells			1B.2	Often roadsides, disturbed areas, and burned areas. Lower montane coniferous forest, Upper montane coniferous forest 700-1525 m	Potential to occur; habitat present in project area.
<i>Pyrocoma racemosa var. congesta</i> Del Norte pyrocoma			2.3	Serpentinite. Chaparral, Lower montane coniferous forest 200-1000 m	Potential to occur; habitat present in project area.
<i>Ribes laxiflorum</i> trailing black currant			4.3	Sometimes roadside. North Coast coniferous forest 5-1395 m	Potential to occur; habitat present in project area.
<i>Rosa gymnocarpa var. serpentina</i> Gasquet rose			1B.3	Serpentinite. Often roadsides, sometimes ridges, streambanks, and openings. Chaparral, Cismontane woodland 400-1500 m	Potential to occur; habitat present in project area.
<i>Sagittaria sanfordii</i> Sanford's arrowhead			1B.2	Marshes and swamps (assorted shallow freshwater) 0-650 m	Potential to occur; habitat present in project area.
<i>Salix delnortensis</i> Del Norte willow			4.3	Riparian forest (serpentinite) 90-500 m	Potential to occur; habitat present in project area.
<i>Sanguisorba officinalis</i> great burnet			2.2	Often serpentinite. Bogs and fens, Broadleafed upland forest, Meadows and seeps, Marshes and swamps, North Coast coniferous forest, Riparian forest 60-1400 m	Potential to occur; habitat present in project area.
<i>Sanicula peckiana</i> Peck's sanicle			4.3	Often serpentinite. Chaparral, Lower montane coniferous forest 150-800 m	Potential to occur; habitat present in project area.
<i>Sidalcea elegans</i> Del Norte checkerbloom			3.3	Serpentinite. Chaparral, Lower montane coniferous forest 215-1365 m	Potential to occur; habitat present in project area.
<i>Sidalcea malviflora ssp. patula</i> Siskiyou checkerbloom			1B.2	Often roadcuts. Coastal bluff scrub, Coastal prairie, North Coast coniferous forest 15-878 m	Potential to occur; habitat present in project area.
<i>Sidalcea oregana ssp. eximia</i> coast checkerbloom			1B.2	Lower montane coniferous forest, Meadows and seeps, North Coast coniferous forest 5-1340 m	Potential to occur; habitat present in project area.
<i>Silene serpenticola</i> serpentine catchfly			1B.2	Serpentinite openings; gravelly or rocky. Chaparral, Lower montane coniferous forest 145-1650 m	Potential to occur; habitat present in project area.
<i>Streptanthus howellii</i> Howell's jewel-flower			1B.2	Lower montane coniferous forest (serpentinite, rocky) 305-1500 m	Potential to occur; habitat present in project area.

APPENDIX B
SENSITIVE SPECIES LIST: PLANTS

Species	Status ¹			Habitat	Comments
	F	S	CNPS		
<i>Tauschia glauca</i> glaucous tauschia			4.3	Lower montane coniferous forest (gravelly, serpentinite) 80-1700 m	Potential to occur; habitat present in project area.
<i>Veratrum insolitum</i> Siskiyou false-hellebore			4.3	Clay. Chaparral, Lower montane coniferous forest 45-1635 m	Potential to occur, habitat present in project area.
<i>Viola palustris</i> alpine marsh violet			2.2	Bogs and fens (coastal), Coastal scrub (mesic) 0-150 m	Potential to occur, habitat present in project area.
<i>Viola primulifolia ssp. occidentalis</i> western white bog violet			1B.2	Bogs and fens (serpentinite), Marshes and swamps 100-990 m	Potential to occur, habitat present in project area.
<i>Angelica lucida</i> sea-watch			4.2	Coastal bluff scrub, Coastal dunes, Coastal scrub, Marshes and swamps (coastal salt) 0-150 m	Unlikely to occur; habitat not present in project area.
<i>Calamagrostis crassiglumis</i> Thurber's reed grass			2.1	Coastal scrub (mesic), Marshes and swamps (freshwater) 10-45 m	Unlikely to occur; habitat not present in project area.
<i>Carex lyngbyei</i> Lyngbye's sedge			2.2	Marshes and swamps (brackish or freshwater) 0-10 m	Unlikely to occur; habitat not present in project area.
<i>Castilleja affinis ssp. litoralis</i> Oregon coast paintbrush			2.2	Sandy. Coastal bluff scrub, Coastal dunes, Coastal scrub 15-100 m	Unlikely to occur; habitat not present in project area.
<i>Cochlearia officinalis var. arctica</i> arctic spoonwort			2.3	Coastal bluff scrub (on basaltic sea stack) 0-50 m	Unlikely to occur; habitat not present in project area.
<i>Discelium nudum</i> naked flag moss			2.2	Coastal bluff scrub (soil, on clay banks) 10-50 m	Unlikely to occur; habitat not present in project area.
<i>Empetrum nigrum ssp. hermaphroditum</i> black crowberry			2.2	Coastal bluff scrub, Coastal prairie 10-200 m	Unlikely to occur; habitat not present in project area.
<i>Eriogonum nudum var. paralinum</i> Del Norte buckwheat			2.2	Coastal bluff scrub, Coastal prairie 5-80 m	Unlikely to occur; habitat not present in project area.
<i>Erysimum concinnum</i> bluff wallflower			1B.2	Coastal bluff scrub, Coastal dunes, Coastal prairie 0-185 m	Unlikely to occur; habitat not present in project area.
<i>Hierochloa odorata</i> vanilla-grass			2.3	Meadows and seeps (mesic) 1500-1895 m	Unlikely to occur; habitat not present in project area.

APPENDIX B
SENSITIVE SPECIES LIST: PLANTS

Species	Status ¹			Habitat	Comments
	F	S	CNPS		
<i>Triquetrella californica</i> coastal triquetrella			1B.2	Soil. Coastal bluff scrub, Coastal scrub 10-100 m	Unlikely to occur; habitat not present in project area.
<i>Vaccinium scoparium</i> little-leaved huckleberry			2.2	Subalpine coniferous forest (rocky) 1036-2200 m	Unlikely to occur; habitat not present in project area.
<i>Abronia umbellata</i> var. <i>breviflora</i> pink sand-verbena			1B.1	Coastal dunes 0-10 m	No potential to occur; habitat not present in DNCRSP.
<i>Carex lenticularis</i> var. <i>limnophila</i> lagoon sedge			2.2	Shores, beaches; often gravelly. Bogs and fens, Marshes and swamps, North Coast coniferous forest 0-6 m	No potential to occur; habitat not present in DNCRSP.
<i>Gilia millefoliata</i> dark-eyed gilia			1B.2	Coastal dunes 2-30 m	No potential to occur; habitat not present in DNCRSP.
<i>Glehnia littoralis</i> ssp. <i>leiocarpa</i> American glehnia			4.2	Coastal dunes 0-20 m	No potential to occur; habitat not present in DNCRSP.
<i>Hesperervax sparsiflora</i> var. <i>brevifolia</i> short-leaved evax			1B.2	Coastal bluff scrub (sandy), Coastal dunes 0-215 m	No potential to occur; habitat not present in DNCRSP.
<i>Lathyrus japonicus</i> seaside pea			2.1	Coastal dunes 1-30 m	No potential to occur; habitat not present in DNCRSP.
<i>Layia carnosa</i> beach layia	FE	CE	1B.1	Coastal dunes, Coastal scrub (sandy) 0-60 m	No potential to occur; habitat not present in DNCRSP.
<i>Phacelia argentea</i> sand dune phacelia			1B.1	Coastal dunes 3-25 m	No potential to occur; habitat not present in DNCRSP.
<i>Romanzoffia tracyi</i> Tracy's romanzoffia			2.3	Rocky. Coastal bluff scrub, Coastal scrub 15-30 m	No potential to occur; habitat not present in DNCRSP.
<i>Trientalis europaea</i> arctic starflower			2.2	Coastal. Bogs and fens, Meadows and seeps 0-15 m	No potential to occur; habitat not present in DNCRSP.
<i>Viola langsdorffii</i> Langsdorf's violet			2.1	Bogs and fens (coastal) 2-10 m	ⁱ No potential to occur; habitat not present in DNCRSP.

APPENDIX B

SENSITIVE SPECIES LIST: PLANTS

¹ FE = Federally Endangered

CE = California Endangered

CR = California Rare

California Rare Plant Rank (CNPS 2013):

List 1A - Plants presumed extinct in California

List 1B - Plants rare and endangered in California and elsewhere

List 2 - Plants rare and endangered in California but more common elsewhere

List 3 - Plants about which CNPS needs more information

List 4 - Plants of limited distribution (Watch List)

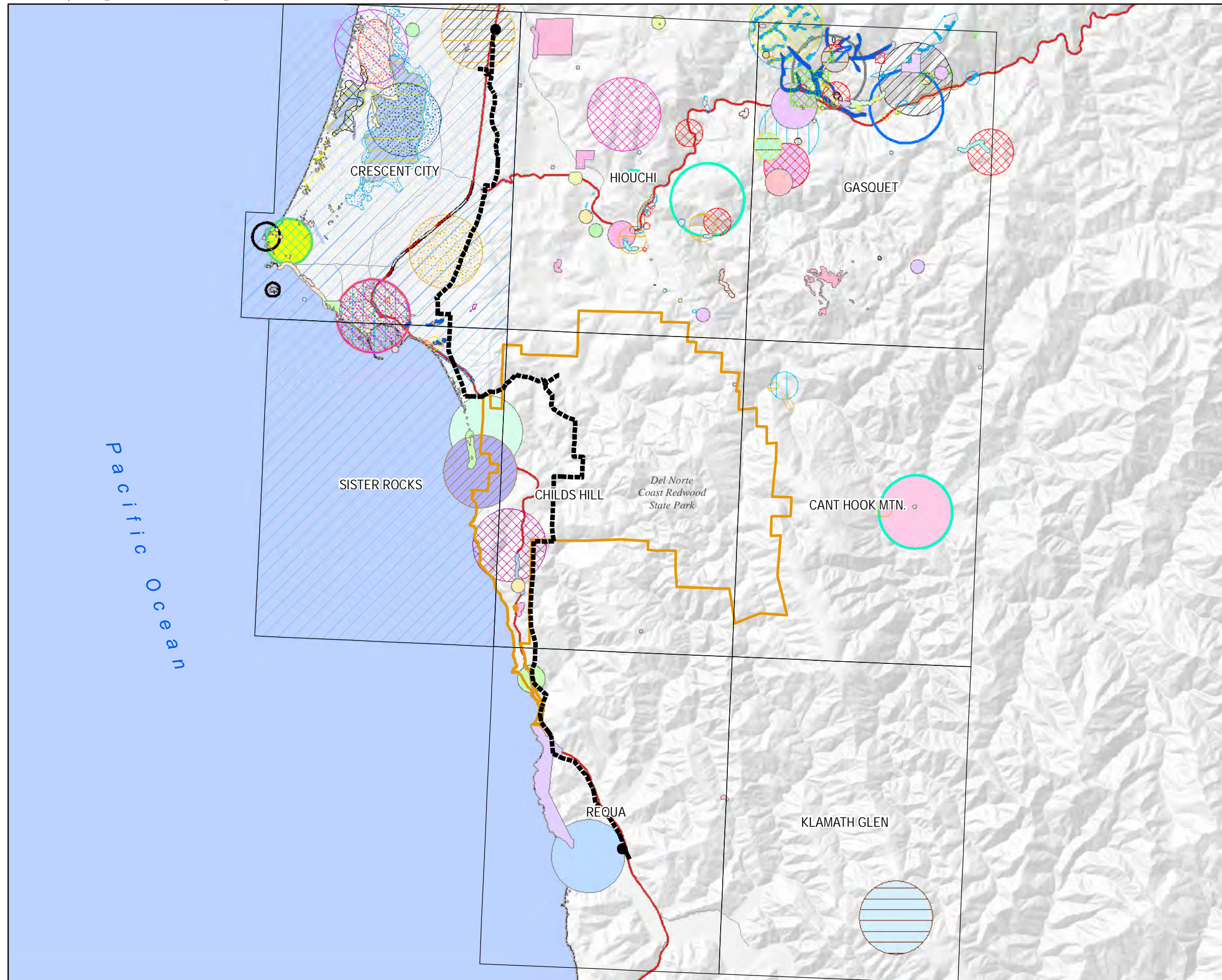
Threat Ranks: 0.1-Seriously threatened in California (high degree/immediacy of threat)

0.2-Fairly threatened in California (moderate degree/immediacy of threat)

0.3-Not very threatened in California (low degree/immediacy of threats or no current threats known)

¹ California Native Plant Society (CNPS). 2013. Inventory of Rare and Endangered Plants (online edition, v8-01a). California Native Plant Society. Sacramento, CA. Accessed on Thursday, February 14, 2013.

California Natural Diversity Database (CNDDDB) known occurrence within the vicinity of the Project. CNDDDB search conducted for USGS 7.5' Quadrangles: Childs Hill, Sister Rock, Crescent City, Hiouchi, Gasquet, and Cant Hook Mountain. Source: CNDDDB, data last updated February 5, 2013.



DEL NORTE TO YUROK TRANSMISSION LINE

Legend

- | | |
|-------------------------------------|----------------------------|
| ● Existing Substations | bluff wallflower |
| — Line 87 (Del Norte-Yurok) T-Line | bristle-stalked sedge |
| □ USGS 24K Quadrangles | coast fawn lily |
| CNAME | coast sidalcea |
| Butte County morning-glory | coastal triquetrella |
| Coast Range lomatium | dark-eyed gilia |
| Coastal Brackish Marsh | fibrous pondweed |
| Coastal and Valley Freshwater Marsh | ghost-pipe |
| Darlingtonia Seep | giant fawn lily |
| Del Norte buckwheat | great burnet |
| Del Norte pyrrocoma | green yellow sedge |
| Gasquet rose | horned butterwort |
| Henderson's fawn lily | lagoon sedge |
| Howell's fawn lily | leafy reed grass |
| Howell's jewel-flower | leafy-stemmed mitrewort |
| Howell's sandwort | little-leaved huckleberry |
| Koehler's rockcress | long-beard lichen |
| Langsdorf's violet | maidenhair spleenwort |
| Lyngbye's sedge | maple-leaved checkerbloom |
| Mendocino gentian | marsh pea |
| Northern Coastal Salt Marsh | minute pocket moss |
| Nuttall's saxifrage | naked flag moss |
| Oregon coast paintbrush | nodding vanilla-grass |
| Oregon goldthread | northern meadow sedge |
| Oregon polemonium | opposite-leaved lewisia |
| Pacific gilia | pink sand-verbena |
| Sanford's arrowhead | sand dune phacelia |
| Siskiyou bells | seacoast ragwort |
| Siskiyou checkerbloom | seaside bittercress |
| Siskiyou paintbrush | seaside pea |
| Thurber's reed grass | serpentine catchfly |
| Tracy's romanzoffia | serpentine sedge |
| Waldo wild buckwheat | short-leaved evax |
| Wolf's evening-primrose | western lily |
| alpine marsh violet | western ragwort |
| arctic spoonwort | western white bog violet |
| arctic starflower | white-flowered rein orchid |
| black crowberry | yellow-tubered toothwort |

Notes:
 (a) UTM Zone 10, NAD 1983 Projection, Meters
 (b) Source Data: California Natural Diversity Database (CDFG), (February 2013)

CNDDDB SPECIAL-STATUS PLANT OCCURRENCES WITHIN THE PROJECT VICINITY



APPENDIX C
SPECIES LIST: ANIMALS

This page intentionally left blank.

APPENDIX C

SPECIAL-STATUS SPECIES LIST: ANIMALS

Species	Status ¹	Habitat	Comments
Reptiles and Amphibians			
Southern torrent salamander* <i>Rhacotriton variegatus</i>	CSC	Springs, seeps, and streams in coastal redwood, Douglas-fir, mixed conifer, montane riparian and montane hardwood- conifer habitats, old growth forest.	Known to occur within DNCR
Del Norte salamander* <i>Plethodon elongatus</i>	CSC	Old growth associated mixed conifer/ hardwood habitats. Cool, moist, deep litter layer, closed multi-storied canopy dominated by large, old trees.	Known to occur within DNCR
Pacific tailed frog* <i>Ascaphus truei</i>	CSC	Montane hardwood-conifer, redwood, Douglas-fir and ponderosa pine habitats.	Known to occur within DNCR
Northern red-legged frog* <i>Rana aurora</i>	CSC	Humid forests, woodlands, grasslands, and streamside in northwestern California	Known to occur within DNCR
Foothill yellow-legged frog* <i>Rana boylei</i>	CSC	Partly-shaded, shallow streams and riffles with a rocky substrate in a variety of habitats.	Known to occur within DNCR
Western pond turtle* <i>Emys marmorata</i>	CSC	Ponds, marshes, rivers, streams with aquatic vegetation and suitable basking sites. Near suitable upland (sandy banks or open grassy fields) habitat for egg-laying.	Known to occur adjacent to DNCR
Birds			
Sharp-shinned hawk <i>Accipiter striatus</i>	---	Nesting – riparian deciduous and mixed conifer habitats.	Known to occur within DNCR
Cooper's hawk <i>Accipiter cooperi</i>	---	Nesting – open, interrupted or marginal woodland.	Known to occur within DNCR
Fork-tailed storm-petrel* <i>Oceanodroma furcata</i>	CSC	Nesting – offshore islands.	Unlikely to occur within DNCR due to lack of habitat
Golden eagle <i>Aquila chrysaetos</i>	FP	Nesting and wintering – rolling foothill mountainous areas, sage-juniper flats, desert.	Possible – DNCR is within breeding and wintering range
Bald eagle <i>Haliaeetus leucocephalus</i>	CE, FP	Nesting and wintering – ocean shores, lake margins and rivers.	Known to occur within DNCR
Osprey* <i>Pandion haliaetus</i>	---	Nesting – ocean shores, bays, fresh-water lakes and rivers. Large tree-tops within 15 miles of fish-producing water.	Known to occur within DNCR
Peregrine falcon <i>Falco peregrinus</i>	FP	Nesting – near wetlands, lakes, rivers; on cliffs, banks, mounds and human-made structures.	Known to occur within DNCR
Northern goshawk <i>Accipiter gentilis</i>	CSC	North coast, subalpine, upper montane coniferous forest	Possible – DNCR is within breeding and year-round range

APPENDIX C

SPECIAL-STATUS SPECIES LIST: ANIMALS

Species	Status¹	Habitat	Comments
Northern spotted owl <i>Strix occidentalis caurina</i>	FT, CSC	Old-growth forest or mixed stands of old-growth and mature trees. Occasionally in younger forests with patched of big trees.	Known to occur within DNCR
Ruffed grouse <i>Bonasa umbellus</i>	---	Mixed deciduous and coniferous trees, often in dense canyon-bottom or stream-side growths.	Known to occur within DNCR
Marbled murrelet <i>Brachyramphus marmoratus</i>	FT, CE	Old-growth redwood dominated forests, up to six miles inland.	Known to occur within DNCR
Black swift* <i>Cypseloides niger</i>	CSC	Nests in colonies on cliffs behind or adjacent to waterfalls in deep canyons.	Known to occur adjacent to DNCR
Vaux's swift <i>Chaetura vauxi</i>	CSC	Nesting – Redwood, Douglas-fir and other coniferous forests. Nest in large hollow trees and snags often nests in flocks.	Known to occur within DNCR
Purple martin <i>Progne subis</i>	CSC	Nesting – low elevation coniferous forest and woodlands.	Known to occur within DNCR
Tufted puffin* <i>Fratercula cirrhata</i>	CSC	Nesting - breeds colonially on steep, rocky islands and mainland cliffs; coastal areas.	Unlikely to occur within DNCR due to lack of habitat
Western snowy plover* <i>Charadrius alexandrinus nivosus</i>	FT, CSC	Unvegetated to sparsely vegetated coastal beaches and shores of inland alkaline lakes.	Unlikely to occur within DNCR due to lack of habitat
White-tailed kite* <i>Elanus leucurus</i>	FP	Low elevation grassland, agricultural, wetland, oak-woodland, or savannah habitats	Possible – DNCR is within known range
Willow flycatcher <i>Empidonax traillii</i>	CE	Nesting – willow riparian thickets 2000-8000 elevation.	
Yellow warbler <i>Dendroica petechia brewsteri</i>	CSC	Nesting – riparian plant associations, such as willow, cottonwood, aspen and alders for nesting and foraging.	Known to occur within DNCR
Yellow-breasted chat <i>Icteria virens</i>	CSC	Nesting – summer resident, riparian vegetation.	Known to occur within DNCR
Mammals			
Silver-haired bat* <i>Lasionycteris noctivagans</i>	---	Coastal and montane forest. Roosts in hollow trees, beneath exfoliating bark, abandoned woodpecker holes, and rarely under rocks. Needs drinking water. Forages over streams ponds and brushy areas.	Known to occur within DNCR
Yuma myotis* <i>Myotis yumanensis</i>	---	Open forests and woodlands near bodies of water. Maternity colonies in caves, mines, buildings or crevices.	Known to occur within DNCR

APPENDIX C

SPECIAL-STATUS SPECIES LIST: ANIMALS

Species	Status ¹	Habitat	Comments
Fringed myotis* <i>Myotis thysanodes</i>	---	Wide variety of habitats. Pinyon-juniper, valley foothill hardwood, and hardwood-conifer. Maternity colonies and roosts in caves, mines, buildings, or crevices.	Known to occur within DNCR
Sonoma(red) tree vole* <i>Arborimus pomo</i>	CSC	Northcoast fogbelt from Oregon border to Sonoma Co. Douglas fir, redwood, and montane hardwood-conifer forests. Forages almost exclusively on Douglas fir needles. Will occasionally feed on Grand fir, Hemlock, or Spruce.	Known to occur within DNCR
Humboldt marten* <i>Martes americana humboldtensis</i>	CSC	Redwood, Douglas-fir, late-successional coniferous forest. Prefers forest with low, overhead cover.	Known to occur adjacent to DNCR
Pacific fisher Distinct Population Segment (DPS)* <i>Martes pennanti</i>	FT Candidate / CSC	Intermediate to large tree stage coniferous forests and deciduous-riparian areas with high canopy closure. Uses cavities, snags, logs, and rocky areas for cover and denning.	Known to occur within DNCR
Invertebrates			
Hippolyta fritillary* <i>Speyeria zerene hippolyta</i>	FT	Grassland habitats: marine terrace, coastal headland salt spray meadows, stabilized dunes, and montane grasslands. Highly reliant on specific host plants. ²	No known occurrences within DNCR.
Mardon skipper* <i>Polites mardon</i>	FT Candidate	Known from western Washington state and extreme northwestern Del Norte Co. Northcoast coniferous forest.	Known to occur adjacent to DNCR
Fish			
Coho salmon <i>Oncorhynchus kisutch</i>	FE, CE	Coastal waters and anadromous streams.	Known to occur within DNCR
Chinook Salmon <i>Oncorhynchus tshawytscha</i>	FT, CT	Coastal waters and anadromous streams.	Known to occur within DNCR
Chum Salmon <i>Oncorhynchus keta</i>	CSC	Coastal waters and anadromous streams.	Known to occur within DNCR
Longfin smelt* <i>Spirinchus thaleichthys</i>	CT	Coastal waters and anadromous streams.	No known occurrences within DNCR.
Summer-run Steelhead trout* <i>Oncorhynchus mykiss irideus</i>	CSC	Coastal waters and anadromous streams.	Known to occur within DNCR
Coastal cutthroat trout* <i>Oncorhynchus clarkii clarkii</i>	CSC	Small low gradient coastal streams from Eel river to Oregon border. Need shaded streams with small gravel and water temp <18C	Known to occur within DNCR
River lamprey <i>Lampetra ayresi</i>	CSC	Klamath / Smith river watersheds	Known to occur within DNCR

APPENDIX C

SPECIAL-STATUS SPECIES LIST: ANIMALS

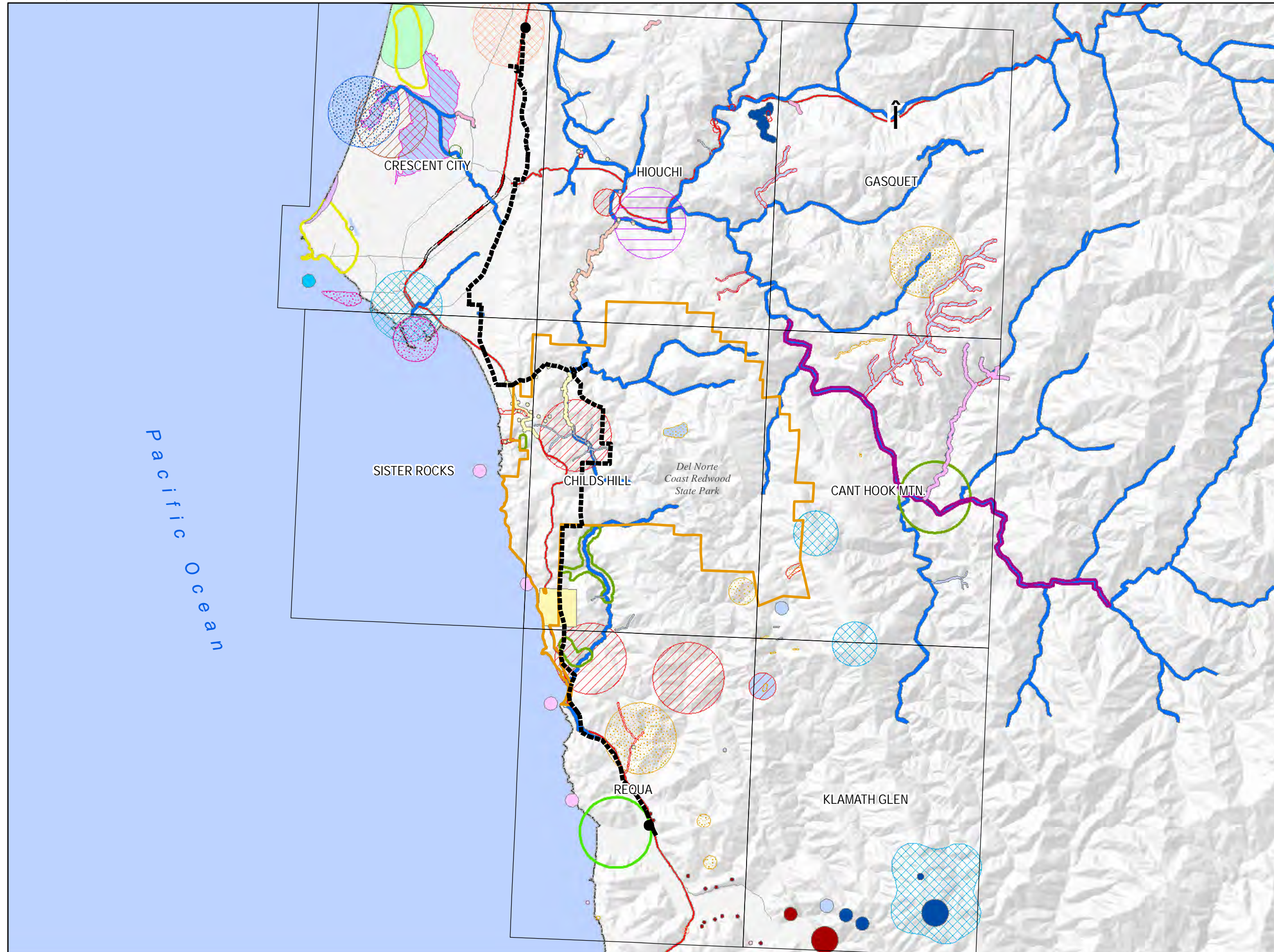
Species	Status¹	Habitat	Comments
Tidewater goby* <i>Eucyclogobius newberryi</i>	FE, CSC	Lagoons, estuaries, marshes, and occasionally in freshwater streams that are tributary to brackish habitats	No known occurrences within DNCR.

¹ Special-status Species are considered: FE – Federally Endangered, FT – Federally Threatened, SE – State Endangered, ST – State Threatened, FP – Fully Protected (in California), CSC – California Species of Special Concern.

Source: <http://www.dfg.ca.gov/biogeodata/cnddb/pdfs/SPAnimals.pdf>

² http://ecos.fws.gov/docs/recovery_plan/010822.pdf

* California Natural Diversity Database (CNDDDB) known occurrence within the vicinity of the Project. CNDDDB search conducted for USGS 7.5' Quadrangles: Childs Hill, Sister Rock, Crescent City, Hiouchi, Gasquet, and Cant Hook Mountain. Source: CNDDDB, data last updated February 5, 2013. Note some species are tracked in CNDDDB but are not considered in this table because their rank is not within the categories defined, above.



Legend

- Existing Substations
- Line 87 (Del Norte-Yurok) T-Line
- USGS 24K Quadrangles
- Amphibians**
 - Del Norte Salamander
 - Foothill Yellow-legged Frog
 - Northern Red-legged Frog
 - Pacific Tailed Frog
 - Southern Torrent Salamander
- Birds**
 - Western Snowy Plover
 - Tufted Puffin
 - Double-crested Cormorant
 - White-tailed Kite
 - Osprey
 - Cackling (=Aleutian Canada) Goose
 - Great Blue Heron
 - Rhinoceros Auklet
 - Fork-tailed Storm-Petrel
 - Black Swift
- Fish**
 - Tidewater Goby
 - Summer-Run Steelhead Trout
 - Longfin Smelt
 - Coast Cutthroat Trout
- Insects**
 - Fort Dick Limnephilus Caddisfly
 - Yontocket Satyr
 - Hippolyta Fritillary
 - Mardon Skipper
- Mammals**
 - Humboldt Marten
 - Silver-Haired Bat
 - Fisher - West Coast DPS
 - Fringed Myotis
 - Yuma Myotis
 - Sonoma Tree Vole
- Mollusks**
 - Chace Juga
 - Rocky Coast Pacific Sideband
 - Western Pearlshell
- Reptiles**
 - Western Pond Turtle

Notes:
 (a) UTM Zone 10, NAD 1983 Projection, Meters
 (b) Source Data: California Natural Diversity Database (CDFG), (February 2013)

CNDDDB SPECIAL-STATUS WILDLIFE
 OCCURRENCES WITHIN THE
 PROJECT VICINITY



APPENDIX D

CULTURAL RESOURCES

CONFIDENTIAL – CONTENTS REMOVED

**D-1 Roscoe and Associates Cultural Resources Survey Report,
August 2012**

D-2 Chambers Group Report, January 2011

This page intentionally left blank.

APPENDIX E
EDR DATAMAP CORRIDOR STUDY

This page intentionally left blank.

Del Norte to Yurok Electric Transmission Line
Klamath, CA 95548

Inquiry Number: 3558238.1s
March 29, 2013

EDR DataMap™ Corridor Study

Thank you for your business.
Please contact EDR at 1-800-352-0050
with any questions or comments.

Disclaimer - Copyright and Trademark Notice

This Report contains certain information obtained from a variety of public and other sources reasonably available to Environmental Data Resources, Inc. It cannot be concluded from this Report that coverage information for the target and surrounding properties does not exist from other sources. **NO WARRANTY EXPRESSED OR IMPLIED, IS MADE WHATSOEVER IN CONNECTION WITH THIS REPORT. ENVIRONMENTAL DATA RESOURCES, INC. SPECIFICALLY DISCLAIMS THE MAKING OF ANY SUCH WARRANTIES, INCLUDING WITHOUT LIMITATION, MERCHANTABILITY OR FITNESS FOR A PARTICULAR USE OR PURPOSE. ALL RISK IS ASSUMED BY THE USER. IN NO EVENT SHALL ENVIRONMENTAL DATA RESOURCES, INC. BE LIABLE TO ANYONE, WHETHER ARISING OUT OF ERRORS OR OMISSIONS, NEGLIGENCE, ACCIDENT OR ANY OTHER CAUSE, FOR ANY LOSS OF DAMAGE, INCLUDING, WITHOUT LIMITATION, SPECIAL, INCIDENTAL, CONSEQUENTIAL, OR EXEMPLARY DAMAGES. ANY LIABILITY ON THE PART OF ENVIRONMENTAL DATA RESOURCES, INC. IS STRICTLY LIMITED TO A REFUND OF THE AMOUNT PAID FOR THIS REPORT.** Purchaser accepts this Report "AS IS". Any analyses, estimates, ratings, environmental risk levels or risk codes provided in this Report are provided for illustrative purposes only, and are not intended to provide, nor should they be interpreted as providing any facts regarding, or prediction or forecast of, any environmental risk for any property. Only a Phase I Environmental Site Assessment performed by an environmental professional can provide information regarding the environmental risk for any property. Additionally, the information provided in this Report is not to be construed as legal advice.

Copyright 2013 by Environmental Data Resources, Inc. All rights reserved. Reproduction in any media or format, in whole or in part, of any report or map of Environmental Data Resources, Inc., or its affiliates, is prohibited without prior written permission.

EDR and its logos (including Sanborn and Sanborn Map) are trademarks of Environmental Data Resources, Inc. or its affiliates. All other trademarks used herein are the property of their respective owners.

EXECUTIVE SUMMARY

TARGET PROPERTY INFORMATION

ADDRESS

KLAMATH, CA 95548
KLAMATH, CA 95548

DATABASES WITH NO MAPPED SITES

No mapped sites were found in EDR's search of available ("reasonably ascertainable ") government records within the requested search area for the following databases:

FEDERAL RECORDS

NPL	National Priority List
Proposed NPL	Proposed National Priority List Sites
Delisted NPL	National Priority List Deletions
CERCLIS	Comprehensive Environmental Response, Compensation, and Liability Information System
CERC-NFRAP	CERCLIS No Further Remedial Action Planned
CORRACTS	Corrective Action Report
RCRA-TSDF	RCRA - Treatment, Storage and Disposal
RCRA-LQG	RCRA - Large Quantity Generators
RCRA-SQG	RCRA - Small Quantity Generators
RCRA-CESQG	RCRA - Conditionally Exempt Small Quantity Generator
RCRA NonGen / NLR	RCRA - Non Generators
US ENG CONTROLS	Engineering Controls Sites List
US INST CONTROL	Sites with Institutional Controls
ERNS	Emergency Response Notification System
HMIRS	Hazardous Materials Information Reporting System
US CDL	Clandestine Drug Labs
US BROWNFIELDS	A Listing of Brownfields Sites
TRIS	Toxic Chemical Release Inventory System
TSCA	Toxic Substances Control Act
FTTS	FIFRA/ TSCA Tracking System - FIFRA (Federal Insecticide, Fungicide, & Rodenticide Act)/TSCA (Toxic Substances Control Act)
SSTS	Section 7 Tracking Systems
ICIS	Integrated Compliance Information System
PADS	PCB Activity Database System
MLTS	Material Licensing Tracking System
RADINFO	Radiation Information Database
FINDS	Facility Index System/Facility Registry System
RAATS	RCRA Administrative Action Tracking System
PRP	Potentially Responsible Parties
US AIRS	Aerometric Information Retrieval System Facility Subsystem

STATE AND LOCAL RECORDS

SCH	School Property Evaluation Program
SWF/LF	Solid Waste Information System

EXECUTIVE SUMMARY

WMUDS/SWAT.....	Waste Management Unit Database
WDS.....	Waste Discharge System
Cortese.....	"Cortese" Hazardous Waste & Substances Sites List
LUST.....	Geotracker's Leaking Underground Fuel Tank Report
CA FID UST.....	Facility Inventory Database
SLIC.....	Statewide SLIC Cases
UST.....	Active UST Facilities
CUPA Listings.....	CUPA Resources List
SWEEPS UST.....	SWEEPS UST Listing
CHMIRS.....	California Hazardous Material Incident Report System
AST.....	Aboveground Petroleum Storage Tank Facilities
DEED.....	Deed Restriction Listing
VCP.....	Voluntary Cleanup Program Properties
RESPONSE.....	State Response Sites
HAZNET.....	Facility and Manifest Data
ENVIROSTOR.....	EnviroStor Database
SPILLS90.....	SPILLS90 data from FirstSearch

TRIBAL RECORDS

INDIAN RESERV.....	Indian Reservations
INDIAN LUST.....	Leaking Underground Storage Tanks on Indian Land
INDIAN UST.....	Underground Storage Tanks on Indian Land

SURROUNDING SITES: SEARCH RESULTS

Surrounding sites were not identified.

Unmappable (orphan) sites are not considered in the foregoing analysis.

EXECUTIVE SUMMARY

Please refer to the end of the findings report for unmapped orphan sites due to poor or inadequate address information.

MAP FINDINGS SUMMARY

<u>Database</u>	<u>Total Plotted</u>
<u>FEDERAL RECORDS</u>	
NPL	0
Proposed NPL	0
Delisted NPL	0
CERCLIS	0
CERC-NFRAP	0
CORRACTS	0
RCRA-TSDF	0
RCRA-LQG	0
RCRA-SQG	0
RCRA-CESQG	0
RCRA NonGen / NLR	0
US ENG CONTROLS	0
US INST CONTROL	0
ERNS	0
HMIRS	0
US CDL	0
US BROWNFIELDS	0
TRIS	0
TSCA	0
FTTS	0
SSTS	0
ICIS	0
PADS	0
MLTS	0
RADINFO	0
FINDS	0
RAATS	0
PRP	0
US AIRS	0
<u>STATE AND LOCAL RECORDS</u>	
SCH	0
SWF/LF	0
WMUDS/SWAT	0
WDS	0
Cortese	0
LUST	0
CA FID UST	0
SLIC	0
UST	0
CUPA Listings	0
SWEEPS UST	0
CHMIRS	0
AST	0
DEED	0
VCP	0
RESPONSE	0

MAP FINDINGS SUMMARY

<u>Database</u>	<u>Total Plotted</u>
HAZNET	0
ENVIROSTOR	0
SPILLS90	0
<u>TRIBAL RECORDS</u>	
INDIAN RESERV	0
INDIAN LUST	0
INDIAN UST	0

NOTES:

Sites may be listed in more than one database

MAP FINDINGS

Map ID
Direction
Distance
Distance (ft.)Site

EDR ID Number

Database(s) EPA ID Number

NO SITES FOUND

ORPHAN SUMMARY

City	EDR ID	Site Name	Site Address	Zip	Database(s)
CRESCENT CITY	S112444343	PACIFICORP - YUOK SUB STATION	17592 HWY 101	95531	CUPA Listings
CRESCENT CITY	S113020923	1X DEL NORTE SOLID WASTE MGMT AUTHORITY	HWY 101 N	95531	HAZNET
CRESCENT CITY	S113020031	DEL NORTE SOLID WASTE MGMT AUTHORITY	HWY 101 N	95531	HAZNET
CRESCENT CITY	S112889508	DEL NORTE REDWOODS STATE PARK	HWY 101 N	95531	HAZNET
CRESCENT CITY	S112933180	MR THOMAS J WHITELEY	800 HWY 101	95531	HAZNET
CRESCENT CITY	S101316018	CROWLEY MARITIME OIL TERMINALS	HWY 101 S	95531	SLIC
CRESCENT CITY	S105180918	LAGOON CREEK	HWY 101	95531	SLIC
CRESCENT CITY	A100176097	CRESCENT CITY HARBOR	HWY. 101 S. CITIZENS DOCK RD.	95531	AST
CRESCENT CITY	S110654032	CDPR MILL CREEK	HWY 101 S	95531	LUST
CRESCENT CITY	1000236243	OREGON COAST TOWING CRESCENT CITY TERM	HWY 101 S	95531	RCRA-SQG, FINDS
CRESCENT CITY	A100338567	MILL CREEK STATE PARK	HIGHWAY 101, MILL CREEK CAMPGROUND	95531	AST
CRESCENT CITY	S106717291	SOJOURNER TRUCKING	HWY 199 & CLARKS CRK	95531	SLIC
CRESCENT CITY	S109348479	DEL NORTE ICE / SEA PRODUCTS	270TH & HWY 101 S	95531	LUST
CRESCENT CITY	S113020851	DEL NORTE SOLID WASTE MGMT AUTHORITY	41ST DIST AGRI ASSN PARK	95531	HAZNET
CRESCENT CITY	S112897406	CNTY OF DEL NORTE	9TH AND I STS	95531	HAZNET
CRESCENT CITY	1000376355	DOHS-DEL NORTE CO	DEL NORTE CORD	95531	RCRA-SQG, FINDS
CRESCENT CITY	1012238827	STANDARD VENEER	DEL NORTE COUNTY	95531	US BROWNFIELDS, FINDS
CRESCENT CITY	1012237838	DUTTON/HOOSHNAM MILL SITE	DEL NORTE COUNTY	95531	US BROWNFIELDS, FINDS
CRESCENT CITY	S106924994	COURTHOUSE ANNEX	DEL NORTE COUNTY 840 NINTH	95531	SWEEPS UST
CRESCENT CITY	S113010847	CALTRANS DISTRICT 1	HWY DR	95531	HAZNET
CRESCENT CITY	S106094247	STIMSON LUMBER COMPANY	1500 HAMILTON RD	95531	SLIC
CRESCENT CITY	S113171064	STIMSON LUMBER COMPANY	1500 HAMILTON RD	95531	HAZNET
CRESCENT CITY	S112444336	PACIFICORP - MILLER REDWOOD SUB STATION	25 TO HAMILTON RD	95531	CUPA Listings
CRESCENT CITY	S105180765	STIMSON LUMBER COMPANY / MILLER REDWOOD	1000 HAMILTON RD	95531	LUST, SLIC
CRESCENT CITY	S112836790	1X MILLER REDWOOD CO	HAMILTON ROAD HWY	95531	HAZNET
CRESCENT CITY	U003976622	JOE'S CHEVRON AUTO	900 HAY NORTH WILSON	95531	UST
CRESCENT CITY	S112444322	CALIFORNIA STATE PARKS - JED SMITH	1400 US HWY 199	95531	CUPA Listings
CRESCENT CITY	S103617147	DEL NORTE CO SWDS CRESCENT CI	OLD MILL RD	95531	WDS
CRESCENT CITY	1003880000	CRESCENT CITY LDFL	SEC 7	95531	CERC-NFRAP
CRESCENT CITY	S113020482	DEL NORTE COUNTY TRANSFER STATION - LOAD CHECK	1700 STATE ST	95531	HAZNET
CRESCENT CITY	S106905232	DEL NORTE CO TRANSFER STATION	1700 STATE ST	95531	WDS
CRESCENT CITY	1010693559	DEL NORTE CO. TRANSFER STATION	1700 STATE STREET	95531	FINDS
CRESCENT CITY	S112142129	DEL NORTE COUNTY TRANSFER STATION	1700 STATE ST	95531	CUPA Listings
CRESCENT CITY	S113154277	HAMBRO WSG	1700 STATE ST	95531	HAZNET
CRESCENT CITY	CA S103442774	DEL NORTE CO SWDS, CRESCENT CI	OLD MILL RD	95531	WMUDS/SWAT
CRESCENT CITY	CA S103442761	DEL NORTE CO PESTICIDE STORAGE	WASHINGTON	95531	WMUDS/SWAT
GASQUET	A100176263	IDLEWILD MAINT. STAT.-CALTRANS	15600 HWY. 199	95548	AST
KLAMATH	S101479993	SIMPSON LUMBER COMPANY	HWY 101 & ROUTE169	95548	ENVIROSTOR
KLAMATH	S112958226	BLANKET TRUCKING	1342 HWY 101 POST MILE	95548	HAZNET
KLAMATH	S102426457	CDOT KLAMATH YARD	711 HWY 101	95548	LUST
KLAMATH	S105181008	SIMPSON TIMBER COMPANY KLAMATH SWDS	HIGHWAY 101	0	SLIC
KLAMATH	S104857253	RIVERSIDE RV PARK	HIGHWAY 101 17505		LUST

Count: 49 records

ORPHAN SUMMARY

City	EDR ID	Site Name	Site Address	Zip	Database(s)
KLAMATH	S112444328	FRONTIER KLAMATH CENTRAL OFFICE	16846 HWY 101 S	95548	CUPA Listings
KLAMATH	S106928235	KLAMATH CENTRAL OFFICE	16046 S HIGHWAY 101	95548	SWEEPS UST
KLAMATH	S110326387	"U. S. AIR FORCE, REQUA STATION"	P J MURPHY MEMORIAL DRIVE OFF HWY	95548	ENVIROSTOR
KLAMATH	S111786919	KLAMATH STP (DEL NORTE COMMUNITY DEVELOPMENT)	NEW KLAMATH TOWNSITE	95548	Cortese
KLAMATH	S112979785	YUORK INDIAN HOUSING	3495 STATE 169	95548	HAZNET
KLAMATH	1007465878	YUOK TRIBE	YUOK RESERVATION	95548	FINDS
WEITCHPEC	1009908228	YUOK MERCURY SPILL	END OF WEITCHPEC SCHOOL ROAD	95548	CERCLIS

GOVERNMENT RECORDS SEARCHED / DATA CURRENCY TRACKING

To maintain currency of the following federal and state databases, EDR contacts the appropriate governmental agency on a monthly or quarterly basis, as required.

Number of Days to Update: Provides confirmation that EDR is reporting records that have been updated within 90 days from the date the government agency made the information available to the public.

FEDERAL RECORDS

NPL: National Priority List

National Priorities List (Superfund). The NPL is a subset of CERCLIS and identifies over 1,200 sites for priority cleanup under the Superfund Program. NPL sites may encompass relatively large areas. As such, EDR provides polygon coverage for over 1,000 NPL site boundaries produced by EPA's Environmental Photographic Interpretation Center (EPIC) and regional EPA offices.

Date of Government Version: 02/01/2013	Source: EPA
Date Data Arrived at EDR: 03/01/2013	Telephone: N/A
Date Made Active in Reports: 03/13/2013	Last EDR Contact: 03/01/2013
Number of Days to Update: 12	Next Scheduled EDR Contact: 04/22/2013
	Data Release Frequency: Quarterly

NPL Site Boundaries

Sources:

EPA's Environmental Photographic Interpretation Center (EPIC)
Telephone: 202-564-7333

EPA Region 1
Telephone 617-918-1143

EPA Region 6
Telephone: 214-655-6659

EPA Region 3
Telephone 215-814-5418

EPA Region 7
Telephone: 913-551-7247

EPA Region 4
Telephone 404-562-8033

EPA Region 8
Telephone: 303-312-6774

EPA Region 5
Telephone 312-886-6686

EPA Region 9
Telephone: 415-947-4246

EPA Region 10
Telephone 206-553-8665

Proposed NPL: Proposed National Priority List Sites

A site that has been proposed for listing on the National Priorities List through the issuance of a proposed rule in the Federal Register. EPA then accepts public comments on the site, responds to the comments, and places on the NPL those sites that continue to meet the requirements for listing.

Date of Government Version: 02/01/2013	Source: EPA
Date Data Arrived at EDR: 03/01/2013	Telephone: N/A
Date Made Active in Reports: 03/13/2013	Last EDR Contact: 03/01/2013
Number of Days to Update: 12	Next Scheduled EDR Contact: 04/22/2013
	Data Release Frequency: Quarterly

DELISTED NPL: National Priority List Deletions

The National Oil and Hazardous Substances Pollution Contingency Plan (NCP) establishes the criteria that the EPA uses to delete sites from the NPL. In accordance with 40 CFR 300.425.(e), sites may be deleted from the NPL where no further response is appropriate.

Date of Government Version: 02/01/2013	Source: EPA
Date Data Arrived at EDR: 03/01/2013	Telephone: N/A
Date Made Active in Reports: 03/13/2013	Last EDR Contact: 03/01/2013
Number of Days to Update: 12	Next Scheduled EDR Contact: 04/22/2013
	Data Release Frequency: Quarterly

GOVERNMENT RECORDS SEARCHED / DATA CURRENCY TRACKING

CERCLIS: Comprehensive Environmental Response, Compensation, and Liability Information System

CERCLIS contains data on potentially hazardous waste sites that have been reported to the USEPA by states, municipalities, private companies and private persons, pursuant to Section 103 of the Comprehensive Environmental Response, Compensation, and Liability Act (CERCLA). CERCLIS contains sites which are either proposed to or on the National Priorities List (NPL) and sites which are in the screening and assessment phase for possible inclusion on the NPL.

Date of Government Version: 02/04/2013	Source: EPA
Date Data Arrived at EDR: 03/01/2013	Telephone: 703-412-9810
Date Made Active in Reports: 03/13/2013	Last EDR Contact: 03/01/2013
Number of Days to Update: 12	Next Scheduled EDR Contact: 06/10/2013
	Data Release Frequency: Quarterly

CERCLIS-NFRAP: CERCLIS No Further Remedial Action Planned

Archived sites are sites that have been removed and archived from the inventory of CERCLIS sites. Archived status indicates that, to the best of EPA's knowledge, assessment at a site has been completed and that EPA has determined no further steps will be taken to list this site on the National Priorities List (NPL), unless information indicates this decision was not appropriate or other considerations require a recommendation for listing at a later time. This decision does not necessarily mean that there is no hazard associated with a given site; it only means that, based upon available information, the location is not judged to be a potential NPL site.

Date of Government Version: 02/05/2013	Source: EPA
Date Data Arrived at EDR: 03/01/2013	Telephone: 703-412-9810
Date Made Active in Reports: 03/13/2013	Last EDR Contact: 01/04/2013
Number of Days to Update: 12	Next Scheduled EDR Contact: 03/11/2013
	Data Release Frequency: Quarterly

CORRACTS: Corrective Action Report

CORRACTS identifies hazardous waste handlers with RCRA corrective action activity.

Date of Government Version: 02/12/2013	Source: EPA
Date Data Arrived at EDR: 02/21/2013	Telephone: 800-424-9346
Date Made Active in Reports: 02/27/2013	Last EDR Contact: 02/08/2013
Number of Days to Update: 6	Next Scheduled EDR Contact: 05/27/2013
	Data Release Frequency: Quarterly

RCRA-TSDF: RCRA - Treatment, Storage and Disposal

RCRAInfo is EPA's comprehensive information system, providing access to data supporting the Resource Conservation and Recovery Act (RCRA) of 1976 and the Hazardous and Solid Waste Amendments (HSWA) of 1984. The database includes selective information on sites which generate, transport, store, treat and/or dispose of hazardous waste as defined by the Resource Conservation and Recovery Act (RCRA). Transporters are individuals or entities that move hazardous waste from the generator offsite to a facility that can recycle, treat, store, or dispose of the waste. TSDFs treat, store, or dispose of the waste.

Date of Government Version: 02/12/2013	Source: Environmental Protection Agency
Date Data Arrived at EDR: 02/15/2013	Telephone: (415) 495-8895
Date Made Active in Reports: 02/27/2013	Last EDR Contact: 02/15/2013
Number of Days to Update: 12	Next Scheduled EDR Contact: 04/15/2013
	Data Release Frequency: Quarterly

RCRA-LQG: RCRA - Large Quantity Generators

RCRAInfo is EPA's comprehensive information system, providing access to data supporting the Resource Conservation and Recovery Act (RCRA) of 1976 and the Hazardous and Solid Waste Amendments (HSWA) of 1984. The database includes selective information on sites which generate, transport, store, treat and/or dispose of hazardous waste as defined by the Resource Conservation and Recovery Act (RCRA). Large quantity generators (LQGs) generate over 1,000 kilograms (kg) of hazardous waste, or over 1 kg of acutely hazardous waste per month.

Date of Government Version: 02/12/2013	Source: Environmental Protection Agency
Date Data Arrived at EDR: 02/15/2013	Telephone: (415) 495-8895
Date Made Active in Reports: 02/27/2013	Last EDR Contact: 02/15/2013
Number of Days to Update: 12	Next Scheduled EDR Contact: 04/15/2013
	Data Release Frequency: Quarterly

GOVERNMENT RECORDS SEARCHED / DATA CURRENCY TRACKING

RCRA-SQG: RCRA - Small Quantity Generators

RCRAInfo is EPA's comprehensive information system, providing access to data supporting the Resource Conservation and Recovery Act (RCRA) of 1976 and the Hazardous and Solid Waste Amendments (HSWA) of 1984. The database includes selective information on sites which generate, transport, store, treat and/or dispose of hazardous waste as defined by the Resource Conservation and Recovery Act (RCRA). Small quantity generators (SQGs) generate between 100 kg and 1,000 kg of hazardous waste per month.

Date of Government Version: 02/12/2013	Source: Environmental Protection Agency
Date Data Arrived at EDR: 02/15/2013	Telephone: (415) 495-8895
Date Made Active in Reports: 02/27/2013	Last EDR Contact: 02/15/2013
Number of Days to Update: 12	Next Scheduled EDR Contact: 04/15/2013
	Data Release Frequency: Quarterly

RCRA-CESQG: RCRA - Conditionally Exempt Small Quantity Generators

RCRAInfo is EPA's comprehensive information system, providing access to data supporting the Resource Conservation and Recovery Act (RCRA) of 1976 and the Hazardous and Solid Waste Amendments (HSWA) of 1984. The database includes selective information on sites which generate, transport, store, treat and/or dispose of hazardous waste as defined by the Resource Conservation and Recovery Act (RCRA). Conditionally exempt small quantity generators (CESQGs) generate less than 100 kg of hazardous waste, or less than 1 kg of acutely hazardous waste per month.

Date of Government Version: 02/12/2013	Source: Environmental Protection Agency
Date Data Arrived at EDR: 02/15/2013	Telephone: (415) 495-8895
Date Made Active in Reports: 02/27/2013	Last EDR Contact: 02/15/2013
Number of Days to Update: 12	Next Scheduled EDR Contact: 04/15/2013
	Data Release Frequency: Varies

RCRA NonGen / NLR: RCRA - Non Generators

RCRAInfo is EPA's comprehensive information system, providing access to data supporting the Resource Conservation and Recovery Act (RCRA) of 1976 and the Hazardous and Solid Waste Amendments (HSWA) of 1984. The database includes selective information on sites which generate, transport, store, treat and/or dispose of hazardous waste as defined by the Resource Conservation and Recovery Act (RCRA). Non-Generators do not presently generate hazardous waste.

Date of Government Version: 02/12/2013	Source: Environmental Protection Agency
Date Data Arrived at EDR: 02/15/2013	Telephone: (415) 495-8895
Date Made Active in Reports: 02/27/2013	Last EDR Contact: 02/15/2013
Number of Days to Update: 12	Next Scheduled EDR Contact: 04/15/2013
	Data Release Frequency: Varies

US ENG CONTROLS: Engineering Controls Sites List

A listing of sites with engineering controls in place. Engineering controls include various forms of caps, building foundations, liners, and treatment methods to create pathway elimination for regulated substances to enter environmental media or effect human health.

Date of Government Version: 12/19/2012	Source: Environmental Protection Agency
Date Data Arrived at EDR: 12/26/2012	Telephone: 703-603-0695
Date Made Active in Reports: 02/27/2013	Last EDR Contact: 03/11/2013
Number of Days to Update: 63	Next Scheduled EDR Contact: 06/24/2013
	Data Release Frequency: Varies

US INST CONTROL: Sites with Institutional Controls

A listing of sites with institutional controls in place. Institutional controls include administrative measures, such as groundwater use restrictions, construction restrictions, property use restrictions, and post remediation care requirements intended to prevent exposure to contaminants remaining on site. Deed restrictions are generally required as part of the institutional controls.

Date of Government Version: 12/19/2012	Source: Environmental Protection Agency
Date Data Arrived at EDR: 12/26/2012	Telephone: 703-603-0695
Date Made Active in Reports: 02/27/2013	Last EDR Contact: 03/11/2013
Number of Days to Update: 63	Next Scheduled EDR Contact: 06/24/2013
	Data Release Frequency: Varies

GOVERNMENT RECORDS SEARCHED / DATA CURRENCY TRACKING

ERNS: Emergency Response Notification System

Emergency Response Notification System. ERNS records and stores information on reported releases of oil and hazardous substances.

Date of Government Version: 12/31/2012
Date Data Arrived at EDR: 01/17/2013
Date Made Active in Reports: 02/15/2013
Number of Days to Update: 29

Source: National Response Center, United States Coast Guard
Telephone: 202-267-2180
Last EDR Contact: 01/17/2013
Next Scheduled EDR Contact: 04/15/2013
Data Release Frequency: Annually

HMIRS: Hazardous Materials Information Reporting System

Hazardous Materials Incident Report System. HMIRS contains hazardous material spill incidents reported to DOT.

Date of Government Version: 12/31/2012
Date Data Arrived at EDR: 01/03/2013
Date Made Active in Reports: 02/27/2013
Number of Days to Update: 55

Source: U.S. Department of Transportation
Telephone: 202-366-4555
Last EDR Contact: 01/03/2013
Next Scheduled EDR Contact: 04/15/2013
Data Release Frequency: Annually

US CDL: Clandestine Drug Labs

A listing of clandestine drug lab locations. The U.S. Department of Justice ("the Department") provides this web site as a public service. It contains addresses of some locations where law enforcement agencies reported they found chemicals or other items that indicated the presence of either clandestine drug laboratories or dumpsites. In most cases, the source of the entries is not the Department, and the Department has not verified the entry and does not guarantee its accuracy. Members of the public must verify the accuracy of all entries by, for example, contacting local law enforcement and local health departments.

Date of Government Version: 11/14/2012
Date Data Arrived at EDR: 12/11/2012
Date Made Active in Reports: 02/15/2013
Number of Days to Update: 66

Source: Drug Enforcement Administration
Telephone: 202-307-1000
Last EDR Contact: 03/04/2013
Next Scheduled EDR Contact: 06/17/2013
Data Release Frequency: Quarterly

US BROWNFIELDS: A Listing of Brownfields Sites

Brownfields are real property, the expansion, redevelopment, or reuse of which may be complicated by the presence or potential presence of a hazardous substance, pollutant, or contaminant. Cleaning up and reinvesting in these properties takes development pressures off of undeveloped, open land, and both improves and protects the environment. Assessment, Cleanup and Redevelopment Exchange System (ACRES) stores information reported by EPA Brownfields grant recipients on brownfields properties assessed or cleaned up with grant funding as well as information on Targeted Brownfields Assessments performed by EPA Regions. A listing of ACRES Brownfield sites is obtained from Cleanups in My Community. Cleanups in My Community provides information on Brownfields properties for which information is reported back to EPA, as well as areas served by Brownfields grant programs.

Date of Government Version: 12/10/2012
Date Data Arrived at EDR: 12/11/2012
Date Made Active in Reports: 12/20/2012
Number of Days to Update: 9

Source: Environmental Protection Agency
Telephone: 202-566-2777
Last EDR Contact: 03/26/2013
Next Scheduled EDR Contact: 07/08/2013
Data Release Frequency: Semi-Annually

TRIS: Toxic Chemical Release Inventory System

Toxic Release Inventory System. TRIS identifies facilities which release toxic chemicals to the air, water and land in reportable quantities under SARA Title III Section 313.

Date of Government Version: 12/31/2009
Date Data Arrived at EDR: 09/01/2011
Date Made Active in Reports: 01/10/2012
Number of Days to Update: 131

Source: EPA
Telephone: 202-566-0250
Last EDR Contact: 02/26/2013
Next Scheduled EDR Contact: 06/10/2013
Data Release Frequency: Annually

GOVERNMENT RECORDS SEARCHED / DATA CURRENCY TRACKING

TSCA: Toxic Substances Control Act

Toxic Substances Control Act. TSCA identifies manufacturers and importers of chemical substances included on the TSCA Chemical Substance Inventory list. It includes data on the production volume of these substances by plant site.

Date of Government Version: 12/31/2006	Source: EPA
Date Data Arrived at EDR: 09/29/2010	Telephone: 202-260-5521
Date Made Active in Reports: 12/02/2010	Last EDR Contact: 03/28/2013
Number of Days to Update: 64	Next Scheduled EDR Contact: 07/08/2013
	Data Release Frequency: Every 4 Years

FTTS: FIFRA/ TSCA Tracking System - FIFRA (Federal Insecticide, Fungicide, & Rodenticide Act)/TSCA (Toxic Substances Control Act)
FTTS tracks administrative cases and pesticide enforcement actions and compliance activities related to FIFRA, TSCA and EPCRA (Emergency Planning and Community Right-to-Know Act). To maintain currency, EDR contacts the Agency on a quarterly basis.

Date of Government Version: 04/09/2009	Source: EPA/Office of Prevention, Pesticides and Toxic Substances
Date Data Arrived at EDR: 04/16/2009	Telephone: 202-566-1667
Date Made Active in Reports: 05/11/2009	Last EDR Contact: 02/25/2013
Number of Days to Update: 25	Next Scheduled EDR Contact: 06/10/2013
	Data Release Frequency: Quarterly

FTTS INSP: FIFRA/ TSCA Tracking System - FIFRA (Federal Insecticide, Fungicide, & Rodenticide Act)/TSCA (Toxic Substances Control Act)
A listing of FIFRA/TSCA Tracking System (FTTS) inspections and enforcements.

Date of Government Version: 04/09/2009	Source: EPA
Date Data Arrived at EDR: 04/16/2009	Telephone: 202-566-1667
Date Made Active in Reports: 05/11/2009	Last EDR Contact: 02/25/2013
Number of Days to Update: 25	Next Scheduled EDR Contact: 06/10/2013
	Data Release Frequency: Quarterly

SSTS: Section 7 Tracking Systems

Section 7 of the Federal Insecticide, Fungicide and Rodenticide Act, as amended (92 Stat. 829) requires all registered pesticide-producing establishments to submit a report to the Environmental Protection Agency by March 1st each year. Each establishment must report the types and amounts of pesticides, active ingredients and devices being produced, and those having been produced and sold or distributed in the past year.

Date of Government Version: 12/31/2009	Source: EPA
Date Data Arrived at EDR: 12/10/2010	Telephone: 202-564-4203
Date Made Active in Reports: 02/25/2011	Last EDR Contact: 01/28/2013
Number of Days to Update: 77	Next Scheduled EDR Contact: 05/13/2013
	Data Release Frequency: Annually

ICIS: Integrated Compliance Information System

The Integrated Compliance Information System (ICIS) supports the information needs of the national enforcement and compliance program as well as the unique needs of the National Pollutant Discharge Elimination System (NPDES) program.

Date of Government Version: 07/20/2011	Source: Environmental Protection Agency
Date Data Arrived at EDR: 11/10/2011	Telephone: 202-564-5088
Date Made Active in Reports: 01/10/2012	Last EDR Contact: 01/17/2013
Number of Days to Update: 61	Next Scheduled EDR Contact: 04/29/2013
	Data Release Frequency: Quarterly

PADS: PCB Activity Database System

PCB Activity Database. PADS Identifies generators, transporters, commercial storers and/or brokers and disposers of PCB's who are required to notify the EPA of such activities.

Date of Government Version: 11/01/2010	Source: EPA
Date Data Arrived at EDR: 11/10/2010	Telephone: 202-566-0500
Date Made Active in Reports: 02/16/2011	Last EDR Contact: 01/16/2013
Number of Days to Update: 98	Next Scheduled EDR Contact: 04/29/2013
	Data Release Frequency: Annually

GOVERNMENT RECORDS SEARCHED / DATA CURRENCY TRACKING

MLTS: Material Licensing Tracking System

MLTS is maintained by the Nuclear Regulatory Commission and contains a list of approximately 8,100 sites which possess or use radioactive materials and which are subject to NRC licensing requirements. To maintain currency, EDR contacts the Agency on a quarterly basis.

Date of Government Version: 06/21/2011	Source: Nuclear Regulatory Commission
Date Data Arrived at EDR: 07/15/2011	Telephone: 301-415-7169
Date Made Active in Reports: 09/13/2011	Last EDR Contact: 03/11/2013
Number of Days to Update: 60	Next Scheduled EDR Contact: 06/24/2013
	Data Release Frequency: Quarterly

RADINFO: Radiation Information Database

The Radiation Information Database (RADINFO) contains information about facilities that are regulated by U.S. Environmental Protection Agency (EPA) regulations for radiation and radioactivity.

Date of Government Version: 10/02/2012	Source: Environmental Protection Agency
Date Data Arrived at EDR: 10/02/2012	Telephone: 202-343-9775
Date Made Active in Reports: 11/05/2012	Last EDR Contact: 01/09/2013
Number of Days to Update: 34	Next Scheduled EDR Contact: 04/22/2013
	Data Release Frequency: Quarterly

FINDS: Facility Index System/Facility Registry System

Facility Index System. FINDS contains both facility information and 'pointers' to other sources that contain more detail. EDR includes the following FINDS databases in this report: PCS (Permit Compliance System), AIRS (Aerometric Information Retrieval System), DOCKET (Enforcement Docket used to manage and track information on civil judicial enforcement cases for all environmental statutes), FURS (Federal Underground Injection Control), C-DOCKET (Criminal Docket System used to track criminal enforcement actions for all environmental statutes), FFIS (Federal Facilities Information System), STATE (State Environmental Laws and Statutes), and PADS (PCB Activity Data System).

Date of Government Version: 10/23/2011	Source: EPA
Date Data Arrived at EDR: 12/13/2011	Telephone: (415) 947-8000
Date Made Active in Reports: 03/01/2012	Last EDR Contact: 03/12/2013
Number of Days to Update: 79	Next Scheduled EDR Contact: 06/24/2013
	Data Release Frequency: Quarterly

RAATS: RCRA Administrative Action Tracking System

RCRA Administration Action Tracking System. RAATS contains records based on enforcement actions issued under RCRA pertaining to major violators and includes administrative and civil actions brought by the EPA. For administration actions after September 30, 1995, data entry in the RAATS database was discontinued. EPA will retain a copy of the database for historical records. It was necessary to terminate RAATS because a decrease in agency resources made it impossible to continue to update the information contained in the database.

Date of Government Version: 04/17/1995	Source: EPA
Date Data Arrived at EDR: 07/03/1995	Telephone: 202-564-4104
Date Made Active in Reports: 08/07/1995	Last EDR Contact: 06/02/2008
Number of Days to Update: 35	Next Scheduled EDR Contact: 09/01/2008
	Data Release Frequency: No Update Planned

BRS: Biennial Reporting System

The Biennial Reporting System is a national system administered by the EPA that collects data on the generation and management of hazardous waste. BRS captures detailed data from two groups: Large Quantity Generators (LQG) and Treatment, Storage, and Disposal Facilities.

Date of Government Version: 12/31/2009	Source: EPA/NTIS
Date Data Arrived at EDR: 03/01/2011	Telephone: 800-424-9346
Date Made Active in Reports: 05/02/2011	Last EDR Contact: 02/26/2013
Number of Days to Update: 62	Next Scheduled EDR Contact: 06/10/2013
	Data Release Frequency: Biennially

GOVERNMENT RECORDS SEARCHED / DATA CURRENCY TRACKING

US AIRS MINOR: Air Facility System Data

A listing of minor source facilities.

Date of Government Version: 11/15/2012
Date Data Arrived at EDR: 11/16/2012
Date Made Active in Reports: 02/15/2013
Number of Days to Update: 91

Source: EPA
Telephone: 202-564-5962
Last EDR Contact: 12/28/2012
Next Scheduled EDR Contact: 04/15/2013
Data Release Frequency: Annually

US AIRS (AFS): Aerometric Information Retrieval System Facility Subsystem (AFS)

The database is a sub-system of Aerometric Information Retrieval System (AIRS). AFS contains compliance data on air pollution point sources regulated by the U.S. EPA and/or state and local air regulatory agencies. This information comes from source reports by various stationary sources of air pollution, such as electric power plants, steel mills, factories, and universities, and provides information about the air pollutants they produce. Action, air program, air program pollutant, and general level plant data. It is used to track emissions and compliance data from industrial plants.

Date of Government Version: 11/15/2012
Date Data Arrived at EDR: 11/16/2012
Date Made Active in Reports: 02/15/2013
Number of Days to Update: 91

Source: EPA
Telephone: 202-564-5962
Last EDR Contact: 12/28/2012
Next Scheduled EDR Contact: 04/15/2013
Data Release Frequency: Annually

PRP: Potentially Responsible Parties

A listing of verified Potentially Responsible Parties

Date of Government Version: 12/02/2012
Date Data Arrived at EDR: 01/03/2013
Date Made Active in Reports: 03/13/2013
Number of Days to Update: 69

Source: EPA
Telephone: 202-564-6023
Last EDR Contact: 01/03/2013
Next Scheduled EDR Contact: 04/15/2013
Data Release Frequency: Quarterly

STATE AND LOCAL RECORDS

SCH: School Property Evaluation Program

This category contains proposed and existing school sites that are being evaluated by DTSC for possible hazardous materials contamination. In some cases, these properties may be listed in the CalSites category depending on the level of threat to public health and safety or the environment they pose.

Date of Government Version: 03/13/2013
Date Data Arrived at EDR: 03/14/2013
Date Made Active in Reports: 03/27/2013
Number of Days to Update: 13

Source: Department of Toxic Substances Control
Telephone: 916-323-3400
Last EDR Contact: 03/14/2013
Next Scheduled EDR Contact: 05/20/2013
Data Release Frequency: Quarterly

SWF/LF (SWIS): Solid Waste Information System

Active, Closed and Inactive Landfills. SWF/LF records typically contain an inventory of solid waste disposal facilities or landfills. These may be active or inactive facilities or open dumps that failed to meet RCRA Section 4004 criteria for solid waste landfills or disposal sites.

Date of Government Version: 02/18/2013
Date Data Arrived at EDR: 02/18/2013
Date Made Active in Reports: 03/20/2013
Number of Days to Update: 30

Source: Department of Resources Recycling and Recovery
Telephone: 916-341-6320
Last EDR Contact: 02/18/2013
Next Scheduled EDR Contact: 06/03/2013
Data Release Frequency: Quarterly

WMUDS/SWAT: Waste Management Unit Database

Waste Management Unit Database System. WMUDS is used by the State Water Resources Control Board staff and the Regional Water Quality Control Boards for program tracking and inventory of waste management units. WMUDS is composed of the following databases: Facility Information, Scheduled Inspections Information, Waste Management Unit Information, SWAT Program Information, SWAT Report Summary Information, SWAT Report Summary Data, Chapter 15 (formerly Subchapter 15) Information, Chapter 15 Monitoring Parameters, TPCA Program Information, RCRA Program Information, Closure Information, and Interested Parties Information.

GOVERNMENT RECORDS SEARCHED / DATA CURRENCY TRACKING

Date of Government Version: 04/01/2000
Date Data Arrived at EDR: 04/10/2000
Date Made Active in Reports: 05/10/2000
Number of Days to Update: 30

Source: State Water Resources Control Board
Telephone: 916-227-4448
Last EDR Contact: 02/11/2013
Next Scheduled EDR Contact: 05/27/2013
Data Release Frequency: No Update Planned

WDS: Waste Discharge System

Sites which have been issued waste discharge requirements.

Date of Government Version: 06/19/2007
Date Data Arrived at EDR: 06/20/2007
Date Made Active in Reports: 06/29/2007
Number of Days to Update: 9

Source: State Water Resources Control Board
Telephone: 916-341-5227
Last EDR Contact: 02/25/2013
Next Scheduled EDR Contact: 06/10/2013
Data Release Frequency: Quarterly

CORTESE: "Cortese" Hazardous Waste & Substances Sites List

The sites for the list are designated by the State Water Resource Control Board (LUST), the Integrated Waste Board (SWF/LS), and the Department of Toxic Substances Control (Cal-Sites).

Date of Government Version: 01/02/2013
Date Data Arrived at EDR: 01/03/2013
Date Made Active in Reports: 02/22/2013
Number of Days to Update: 50

Source: CAL EPA/Office of Emergency Information
Telephone: 916-323-3400
Last EDR Contact: 01/03/2013
Next Scheduled EDR Contact: 04/15/2013
Data Release Frequency: Quarterly

LUST REG 9: Leaking Underground Storage Tank Report

Orange, Riverside, San Diego counties. For more current information, please refer to the State Water Resources Control Board's LUST database.

Date of Government Version: 03/01/2001
Date Data Arrived at EDR: 04/23/2001
Date Made Active in Reports: 05/21/2001
Number of Days to Update: 28

Source: California Regional Water Quality Control Board San Diego Region (9)
Telephone: 858-637-5595
Last EDR Contact: 09/26/2011
Next Scheduled EDR Contact: 01/09/2012
Data Release Frequency: No Update Planned

LUST REG 6V: Leaking Underground Storage Tank Case Listing

Leaking Underground Storage Tank locations. Inyo, Kern, Los Angeles, Mono, San Bernardino counties.

Date of Government Version: 06/07/2005
Date Data Arrived at EDR: 06/07/2005
Date Made Active in Reports: 06/29/2005
Number of Days to Update: 22

Source: California Regional Water Quality Control Board Victorville Branch Office (6)
Telephone: 760-241-7365
Last EDR Contact: 09/12/2011
Next Scheduled EDR Contact: 12/26/2011
Data Release Frequency: No Update Planned

LUST REG 6L: Leaking Underground Storage Tank Case Listing

For more current information, please refer to the State Water Resources Control Board's LUST database.

Date of Government Version: 09/09/2003
Date Data Arrived at EDR: 09/10/2003
Date Made Active in Reports: 10/07/2003
Number of Days to Update: 27

Source: California Regional Water Quality Control Board Lahontan Region (6)
Telephone: 530-542-5572
Last EDR Contact: 09/12/2011
Next Scheduled EDR Contact: 12/26/2011
Data Release Frequency: No Update Planned

LUST REG 5: Leaking Underground Storage Tank Database

Leaking Underground Storage Tank locations. Alameda, Alpine, Amador, Butte, Colusa, Contra Costa, Calveras, El Dorado, Fresno, Glenn, Kern, Kings, Lake, Lassen, Madera, Mariposa, Merced, Modoc, Napa, Nevada, Placer, Plumas, Sacramento, San Joaquin, Shasta, Solano, Stanislaus, Sutter, Tehama, Tulare, Tuolumne, Yolo, Yuba counties.

Date of Government Version: 07/01/2008
Date Data Arrived at EDR: 07/22/2008
Date Made Active in Reports: 07/31/2008
Number of Days to Update: 9

Source: California Regional Water Quality Control Board Central Valley Region (5)
Telephone: 916-464-4834
Last EDR Contact: 07/01/2011
Next Scheduled EDR Contact: 10/17/2011
Data Release Frequency: No Update Planned

GOVERNMENT RECORDS SEARCHED / DATA CURRENCY TRACKING

LUST REG 4: Underground Storage Tank Leak List

Los Angeles, Ventura counties. For more current information, please refer to the State Water Resources Control Board's LUST database.

Date of Government Version: 09/07/2004	Source: California Regional Water Quality Control Board Los Angeles Region (4)
Date Data Arrived at EDR: 09/07/2004	Telephone: 213-576-6710
Date Made Active in Reports: 10/12/2004	Last EDR Contact: 09/06/2011
Number of Days to Update: 35	Next Scheduled EDR Contact: 12/19/2011
	Data Release Frequency: No Update Planned

LUST REG 3: Leaking Underground Storage Tank Database

Leaking Underground Storage Tank locations. Monterey, San Benito, San Luis Obispo, Santa Barbara, Santa Cruz counties.

Date of Government Version: 05/19/2003	Source: California Regional Water Quality Control Board Central Coast Region (3)
Date Data Arrived at EDR: 05/19/2003	Telephone: 805-542-4786
Date Made Active in Reports: 06/02/2003	Last EDR Contact: 07/18/2011
Number of Days to Update: 14	Next Scheduled EDR Contact: 10/31/2011
	Data Release Frequency: No Update Planned

LUST REG 2: Fuel Leak List

Leaking Underground Storage Tank locations. Alameda, Contra Costa, Marin, Napa, San Francisco, San Mateo, Santa Clara, Solano, Sonoma counties.

Date of Government Version: 09/30/2004	Source: California Regional Water Quality Control Board San Francisco Bay Region (2)
Date Data Arrived at EDR: 10/20/2004	Telephone: 510-622-2433
Date Made Active in Reports: 11/19/2004	Last EDR Contact: 09/19/2011
Number of Days to Update: 30	Next Scheduled EDR Contact: 01/02/2012
	Data Release Frequency: Quarterly

LUST REG 1: Active Toxic Site Investigation

Del Norte, Humboldt, Lake, Mendocino, Modoc, Siskiyou, Sonoma, Trinity counties. For more current information, please refer to the State Water Resources Control Board's LUST database.

Date of Government Version: 02/01/2001	Source: California Regional Water Quality Control Board North Coast (1)
Date Data Arrived at EDR: 02/28/2001	Telephone: 707-570-3769
Date Made Active in Reports: 03/29/2001	Last EDR Contact: 08/01/2011
Number of Days to Update: 29	Next Scheduled EDR Contact: 11/14/2011
	Data Release Frequency: No Update Planned

LUST: Geotracker's Leaking Underground Fuel Tank Report

Leaking Underground Storage Tank Incident Reports. LUST records contain an inventory of reported leaking underground storage tank incidents. Not all states maintain these records, and the information stored varies by state. For more information on a particular leaking underground storage tank sites, please contact the appropriate regulatory agency.

Date of Government Version: 03/18/2013	Source: State Water Resources Control Board
Date Data Arrived at EDR: 03/19/2013	Telephone: see region list
Date Made Active in Reports: 03/27/2013	Last EDR Contact: 03/19/2013
Number of Days to Update: 8	Next Scheduled EDR Contact: 07/01/2013
	Data Release Frequency: Quarterly

LUST REG 7: Leaking Underground Storage Tank Case Listing

Leaking Underground Storage Tank locations. Imperial, Riverside, San Diego, Santa Barbara counties.

Date of Government Version: 02/26/2004	Source: California Regional Water Quality Control Board Colorado River Basin Region (7)
Date Data Arrived at EDR: 02/26/2004	Telephone: 760-776-8943
Date Made Active in Reports: 03/24/2004	Last EDR Contact: 08/01/2011
Number of Days to Update: 27	Next Scheduled EDR Contact: 11/14/2011
	Data Release Frequency: No Update Planned

GOVERNMENT RECORDS SEARCHED / DATA CURRENCY TRACKING

LUST REG 8: Leaking Underground Storage Tanks

California Regional Water Quality Control Board Santa Ana Region (8). For more current information, please refer to the State Water Resources Control Board's LUST database.

Date of Government Version: 02/14/2005
Date Data Arrived at EDR: 02/15/2005
Date Made Active in Reports: 03/28/2005
Number of Days to Update: 41

Source: California Regional Water Quality Control Board Santa Ana Region (8)
Telephone: 909-782-4496
Last EDR Contact: 08/15/2011
Next Scheduled EDR Contact: 11/28/2011
Data Release Frequency: Varies

CA FID UST: Facility Inventory Database

The Facility Inventory Database (FID) contains a historical listing of active and inactive underground storage tank locations from the State Water Resource Control Board. Refer to local/county source for current data.

Date of Government Version: 10/31/1994
Date Data Arrived at EDR: 09/05/1995
Date Made Active in Reports: 09/29/1995
Number of Days to Update: 24

Source: California Environmental Protection Agency
Telephone: 916-341-5851
Last EDR Contact: 12/28/1998
Next Scheduled EDR Contact: N/A
Data Release Frequency: No Update Planned

SLIC: Statewide SLIC Cases

The SLIC (Spills, Leaks, Investigations and Cleanup) program is designed to protect and restore water quality from spills, leaks, and similar discharges.

Date of Government Version: 03/18/2013
Date Data Arrived at EDR: 03/19/2013
Date Made Active in Reports: 03/27/2013
Number of Days to Update: 8

Source: State Water Resources Control Board
Telephone: 866-480-1028
Last EDR Contact: 03/19/2013
Next Scheduled EDR Contact: 07/01/2013
Data Release Frequency: Varies

SLIC REG 1: Active Toxic Site Investigations

The SLIC (Spills, Leaks, Investigations and Cleanup) program is designed to protect and restore water quality from spills, leaks, and similar discharges.

Date of Government Version: 04/03/2003
Date Data Arrived at EDR: 04/07/2003
Date Made Active in Reports: 04/25/2003
Number of Days to Update: 18

Source: California Regional Water Quality Control Board, North Coast Region (1)
Telephone: 707-576-2220
Last EDR Contact: 08/01/2011
Next Scheduled EDR Contact: 11/14/2011
Data Release Frequency: No Update Planned

SLIC REG 2: Spills, Leaks, Investigation & Cleanup Cost Recovery Listing

The SLIC (Spills, Leaks, Investigations and Cleanup) program is designed to protect and restore water quality from spills, leaks, and similar discharges.

Date of Government Version: 09/30/2004
Date Data Arrived at EDR: 10/20/2004
Date Made Active in Reports: 11/19/2004
Number of Days to Update: 30

Source: Regional Water Quality Control Board San Francisco Bay Region (2)
Telephone: 510-286-0457
Last EDR Contact: 09/19/2011
Next Scheduled EDR Contact: 01/02/2012
Data Release Frequency: Quarterly

SLIC REG 3: Spills, Leaks, Investigation & Cleanup Cost Recovery Listing

The SLIC (Spills, Leaks, Investigations and Cleanup) program is designed to protect and restore water quality from spills, leaks, and similar discharges.

Date of Government Version: 05/18/2006
Date Data Arrived at EDR: 05/18/2006
Date Made Active in Reports: 06/15/2006
Number of Days to Update: 28

Source: California Regional Water Quality Control Board Central Coast Region (3)
Telephone: 805-549-3147
Last EDR Contact: 07/18/2011
Next Scheduled EDR Contact: 10/31/2011
Data Release Frequency: Semi-Annually

GOVERNMENT RECORDS SEARCHED / DATA CURRENCY TRACKING

SLIC REG 4: Spills, Leaks, Investigation & Cleanup Cost Recovery Listing

The SLIC (Spills, Leaks, Investigations and Cleanup) program is designed to protect and restore water quality from spills, leaks, and similar discharges.

Date of Government Version: 11/17/2004
Date Data Arrived at EDR: 11/18/2004
Date Made Active in Reports: 01/04/2005
Number of Days to Update: 47

Source: Region Water Quality Control Board Los Angeles Region (4)
Telephone: 213-576-6600
Last EDR Contact: 07/01/2011
Next Scheduled EDR Contact: 10/17/2011
Data Release Frequency: Varies

SLIC REG 5: Spills, Leaks, Investigation & Cleanup Cost Recovery Listing

The SLIC (Spills, Leaks, Investigations and Cleanup) program is designed to protect and restore water quality from spills, leaks, and similar discharges.

Date of Government Version: 04/01/2005
Date Data Arrived at EDR: 04/05/2005
Date Made Active in Reports: 04/21/2005
Number of Days to Update: 16

Source: Regional Water Quality Control Board Central Valley Region (5)
Telephone: 916-464-3291
Last EDR Contact: 09/12/2011
Next Scheduled EDR Contact: 12/26/2011
Data Release Frequency: Semi-Annually

SLIC REG 6V: Spills, Leaks, Investigation & Cleanup Cost Recovery Listing

The SLIC (Spills, Leaks, Investigations and Cleanup) program is designed to protect and restore water quality from spills, leaks, and similar discharges.

Date of Government Version: 05/24/2005
Date Data Arrived at EDR: 05/25/2005
Date Made Active in Reports: 06/16/2005
Number of Days to Update: 22

Source: Regional Water Quality Control Board, Victorville Branch
Telephone: 619-241-6583
Last EDR Contact: 08/15/2011
Next Scheduled EDR Contact: 11/28/2011
Data Release Frequency: Semi-Annually

SLIC REG 6L: SLIC Sites

The SLIC (Spills, Leaks, Investigations and Cleanup) program is designed to protect and restore water quality from spills, leaks, and similar discharges.

Date of Government Version: 09/07/2004
Date Data Arrived at EDR: 09/07/2004
Date Made Active in Reports: 10/12/2004
Number of Days to Update: 35

Source: California Regional Water Quality Control Board, Lahontan Region
Telephone: 530-542-5574
Last EDR Contact: 08/15/2011
Next Scheduled EDR Contact: 11/28/2011
Data Release Frequency: No Update Planned

SLIC REG 7: SLIC List

The SLIC (Spills, Leaks, Investigations and Cleanup) program is designed to protect and restore water quality from spills, leaks, and similar discharges.

Date of Government Version: 11/24/2004
Date Data Arrived at EDR: 11/29/2004
Date Made Active in Reports: 01/04/2005
Number of Days to Update: 36

Source: California Regional Quality Control Board, Colorado River Basin Region
Telephone: 760-346-7491
Last EDR Contact: 08/01/2011
Next Scheduled EDR Contact: 11/14/2011
Data Release Frequency: No Update Planned

SLIC REG 8: Spills, Leaks, Investigation & Cleanup Cost Recovery Listing

The SLIC (Spills, Leaks, Investigations and Cleanup) program is designed to protect and restore water quality from spills, leaks, and similar discharges.

Date of Government Version: 04/03/2008
Date Data Arrived at EDR: 04/03/2008
Date Made Active in Reports: 04/14/2008
Number of Days to Update: 11

Source: California Region Water Quality Control Board Santa Ana Region (8)
Telephone: 951-782-3298
Last EDR Contact: 09/12/2011
Next Scheduled EDR Contact: 12/26/2011
Data Release Frequency: Semi-Annually

GOVERNMENT RECORDS SEARCHED / DATA CURRENCY TRACKING

SLIC REG 9: Spills, Leaks, Investigation & Cleanup Cost Recovery Listing

The SLIC (Spills, Leaks, Investigations and Cleanup) program is designed to protect and restore water quality from spills, leaks, and similar discharges.

Date of Government Version: 09/10/2007
Date Data Arrived at EDR: 09/11/2007
Date Made Active in Reports: 09/28/2007
Number of Days to Update: 17

Source: California Regional Water Quality Control Board San Diego Region (9)
Telephone: 858-467-2980
Last EDR Contact: 08/08/2011
Next Scheduled EDR Contact: 11/21/2011
Data Release Frequency: Annually

UST: Active UST Facilities

Active UST facilities gathered from the local regulatory agencies

Date of Government Version: 01/30/2013
Date Data Arrived at EDR: 01/31/2013
Date Made Active in Reports: 03/27/2013
Number of Days to Update: 55

Source: SWRCB
Telephone: 916-341-5851
Last EDR Contact: 03/19/2013
Next Scheduled EDR Contact: 07/01/2013
Data Release Frequency: Semi-Annually

UST MENDOCINO: Mendocino County UST Database

A listing of underground storage tank locations in Mendocino County.

Date of Government Version: 09/23/2009
Date Data Arrived at EDR: 09/23/2009
Date Made Active in Reports: 10/01/2009
Number of Days to Update: 8

Source: Department of Public Health
Telephone: 707-463-4466
Last EDR Contact: 03/04/2013
Next Scheduled EDR Contact: 06/17/2013
Data Release Frequency: Annually

SWEEPS UST: SWEEPS UST Listing

Statewide Environmental Evaluation and Planning System. This underground storage tank listing was updated and maintained by a company contacted by the SWRCB in the early 1990's. The listing is no longer updated or maintained. The local agency is the contact for more information on a site on the SWEEPS list.

Date of Government Version: 06/01/1994
Date Data Arrived at EDR: 07/07/2005
Date Made Active in Reports: 08/11/2005
Number of Days to Update: 35

Source: State Water Resources Control Board
Telephone: N/A
Last EDR Contact: 06/03/2005
Next Scheduled EDR Contact: N/A
Data Release Frequency: No Update Planned

CHMIRS: California Hazardous Material Incident Report System

California Hazardous Material Incident Reporting System. CHMIRS contains information on reported hazardous material incidents (accidental releases or spills).

Date of Government Version: 12/06/2012
Date Data Arrived at EDR: 01/29/2013
Date Made Active in Reports: 03/19/2013
Number of Days to Update: 49

Source: Office of Emergency Services
Telephone: 916-845-8400
Last EDR Contact: 01/29/2013
Next Scheduled EDR Contact: 05/13/2013
Data Release Frequency: Varies

AST: Aboveground Petroleum Storage Tank Facilities

Registered Aboveground Storage Tanks.

Date of Government Version: 08/01/2009
Date Data Arrived at EDR: 09/10/2009
Date Made Active in Reports: 10/01/2009
Number of Days to Update: 21

Source: State Water Resources Control Board
Telephone: 916-327-5092
Last EDR Contact: 01/07/2013
Next Scheduled EDR Contact: 04/22/2013
Data Release Frequency: Quarterly

DEED: Deed Restriction Listing

GOVERNMENT RECORDS SEARCHED / DATA CURRENCY TRACKING

Site Mitigation and Brownfields Reuse Program Facility Sites with Deed Restrictions & Hazardous Waste Management Program Facility Sites with Deed / Land Use Restriction. The DTSC Site Mitigation and Brownfields Reuse Program (SMBRP) list includes sites cleaned up under the program's oversight and generally does not include current or former hazardous waste facilities that required a hazardous waste facility permit. The list represents deed restrictions that are active. Some sites have multiple deed restrictions. The DTSC Hazardous Waste Management Program (HWMP) has developed a list of current or former hazardous waste facilities that have a recorded land use restriction at the local county recorder's office. The land use restrictions on this list were required by the DTSC HWMP as a result of the presence of hazardous substances that remain on site after the facility (or part of the facility) has been closed or cleaned up. The types of land use restriction include deed notice, deed restriction, or a land use restriction that binds current and future owners.

Date of Government Version: 03/11/2013	Source: Department of Toxic Substances Control
Date Data Arrived at EDR: 03/12/2013	Telephone: 916-323-3400
Date Made Active in Reports: 03/25/2013	Last EDR Contact: 03/12/2013
Number of Days to Update: 13	Next Scheduled EDR Contact: 06/24/2013
	Data Release Frequency: Semi-Annually

VCP: Voluntary Cleanup Program Properties

Contains low threat level properties with either confirmed or unconfirmed releases and the project proponents have request that DTSC oversee investigation and/or cleanup activities and have agreed to provide coverage for DTSC's costs.

Date of Government Version: 03/13/2013	Source: Department of Toxic Substances Control
Date Data Arrived at EDR: 03/14/2013	Telephone: 916-323-3400
Date Made Active in Reports: 03/27/2013	Last EDR Contact: 03/14/2013
Number of Days to Update: 13	Next Scheduled EDR Contact: 05/20/2013
	Data Release Frequency: Quarterly

RESPONSE: State Response Sites

Identifies confirmed release sites where DTSC is involved in remediation, either in a lead or oversight capacity. These confirmed release sites are generally high-priority and high potential risk.

Date of Government Version: 03/13/2013	Source: Department of Toxic Substances Control
Date Data Arrived at EDR: 03/14/2013	Telephone: 916-323-3400
Date Made Active in Reports: 03/27/2013	Last EDR Contact: 03/14/2013
Number of Days to Update: 13	Next Scheduled EDR Contact: 05/20/2013
	Data Release Frequency: Quarterly

HAZNET: Facility and Manifest Data

Facility and Manifest Data. The data is extracted from the copies of hazardous waste manifests received each year by the DTSC. The annual volume of manifests is typically 700,000 - 1,000,000 annually, representing approximately 350,000 - 500,000 shipments. Data are from the manifests submitted without correction, and therefore many contain some invalid values for data elements such as generator ID, TSD ID, waste category, and disposal method.

Date of Government Version: 12/31/2011	Source: California Environmental Protection Agency
Date Data Arrived at EDR: 06/22/2012	Telephone: 916-255-1136
Date Made Active in Reports: 07/06/2012	Last EDR Contact: 01/14/2013
Number of Days to Update: 14	Next Scheduled EDR Contact: 04/29/2013
	Data Release Frequency: Annually

ENVIROSTOR: EnviroStor Database

The Department of Toxic Substances Control's (DTSC's) Site Mitigation and Brownfields Reuse Program's (SMBRP's) EnviroStor database identifies sites that have known contamination or sites for which there may be reasons to investigate further. The database includes the following site types: Federal Superfund sites (National Priorities List (NPL)); State Response, including Military Facilities and State Superfund; Voluntary Cleanup; and School sites. EnviroStor provides similar information to the information that was available in CalSites, and provides additional site information, including, but not limited to, identification of formerly-contaminated properties that have been released for reuse, properties where environmental deed restrictions have been recorded to prevent inappropriate land uses, and risk characterization information that is used to assess potential impacts to public health and the environment at contaminated sites.

GOVERNMENT RECORDS SEARCHED / DATA CURRENCY TRACKING

Date of Government Version: 03/13/2013
Date Data Arrived at EDR: 03/14/2013
Date Made Active in Reports: 03/27/2013
Number of Days to Update: 13

Source: Department of Toxic Substances Control
Telephone: 916-323-3400
Last EDR Contact: 03/14/2013
Next Scheduled EDR Contact: 05/20/2013
Data Release Frequency: Quarterly

SPILLS90: SPILLS90 data from FirstSearch

Spills 90 includes those spill and release records available exclusively from FirstSearch databases. Typically, they may include chemical, oil and/or hazardous substance spills recorded after 1990. Duplicate records that are already included in EDR incident and release records are not included in Spills 90.

Date of Government Version: 06/06/2012
Date Data Arrived at EDR: 01/03/2013
Date Made Active in Reports: 02/22/2013
Number of Days to Update: 50

Source: FirstSearch
Telephone: N/A
Last EDR Contact: 01/03/2013
Next Scheduled EDR Contact: N/A
Data Release Frequency: No Update Planned

TRIBAL RECORDS

INDIAN RESERV: Indian Reservations

This map layer portrays Indian administered lands of the United States that have any area equal to or greater than 640 acres.

Date of Government Version: 12/31/2005
Date Data Arrived at EDR: 12/08/2006
Date Made Active in Reports: 01/11/2007
Number of Days to Update: 34

Source: USGS
Telephone: 202-208-3710
Last EDR Contact: 01/17/2013
Next Scheduled EDR Contact: 04/29/2013
Data Release Frequency: Semi-Annually

INDIAN LUST R8: Leaking Underground Storage Tanks on Indian Land

LUSTs on Indian land in Colorado, Montana, North Dakota, South Dakota, Utah and Wyoming.

Date of Government Version: 08/27/2012
Date Data Arrived at EDR: 08/28/2012
Date Made Active in Reports: 10/16/2012
Number of Days to Update: 49

Source: EPA Region 8
Telephone: 303-312-6271
Last EDR Contact: 03/21/2013
Next Scheduled EDR Contact: 05/13/2013
Data Release Frequency: Quarterly

INDIAN LUST R7: Leaking Underground Storage Tanks on Indian Land

LUSTs on Indian land in Iowa, Kansas, and Nebraska

Date of Government Version: 08/17/2012
Date Data Arrived at EDR: 08/28/2012
Date Made Active in Reports: 10/16/2012
Number of Days to Update: 49

Source: EPA Region 7
Telephone: 913-551-7003
Last EDR Contact: 01/28/2013
Next Scheduled EDR Contact: 05/13/2013
Data Release Frequency: Varies

INDIAN LUST R4: Leaking Underground Storage Tanks on Indian Land

LUSTs on Indian land in Florida, Mississippi and North Carolina.

Date of Government Version: 12/14/2011
Date Data Arrived at EDR: 12/15/2011
Date Made Active in Reports: 01/10/2012
Number of Days to Update: 26

Source: EPA Region 4
Telephone: 404-562-8677
Last EDR Contact: 01/28/2013
Next Scheduled EDR Contact: 05/13/2013
Data Release Frequency: Semi-Annually

INDIAN LUST R1: Leaking Underground Storage Tanks on Indian Land

A listing of leaking underground storage tank locations on Indian Land.

Date of Government Version: 04/12/2012
Date Data Arrived at EDR: 05/09/2012
Date Made Active in Reports: 07/10/2012
Number of Days to Update: 62

Source: EPA Region 1
Telephone: 617-918-1313
Last EDR Contact: 02/01/2013
Next Scheduled EDR Contact: 05/13/2013
Data Release Frequency: Varies

GOVERNMENT RECORDS SEARCHED / DATA CURRENCY TRACKING

INDIAN LUST R9: Leaking Underground Storage Tanks on Indian Land
LUSTs on Indian land in Arizona, California, New Mexico and Nevada

Date of Government Version: 09/06/2012	Source: Environmental Protection Agency
Date Data Arrived at EDR: 09/07/2012	Telephone: 415-972-3372
Date Made Active in Reports: 10/16/2012	Last EDR Contact: 01/28/2013
Number of Days to Update: 39	Next Scheduled EDR Contact: 05/13/2013
	Data Release Frequency: Quarterly

INDIAN LUST R10: Leaking Underground Storage Tanks on Indian Land
LUSTs on Indian land in Alaska, Idaho, Oregon and Washington.

Date of Government Version: 08/01/2012	Source: EPA Region 10
Date Data Arrived at EDR: 08/02/2012	Telephone: 206-553-2857
Date Made Active in Reports: 10/16/2012	Last EDR Contact: 10/30/2012
Number of Days to Update: 75	Next Scheduled EDR Contact: 05/13/2013
	Data Release Frequency: Quarterly

INDIAN LUST R6: Leaking Underground Storage Tanks on Indian Land
LUSTs on Indian land in New Mexico and Oklahoma.

Date of Government Version: 09/12/2011	Source: EPA Region 6
Date Data Arrived at EDR: 09/13/2011	Telephone: 214-665-6597
Date Made Active in Reports: 11/11/2011	Last EDR Contact: 03/21/2013
Number of Days to Update: 59	Next Scheduled EDR Contact: 05/13/2013
	Data Release Frequency: Varies

INDIAN UST R1: Underground Storage Tanks on Indian Land

The Indian Underground Storage Tank (UST) database provides information about underground storage tanks on Indian land in EPA Region 1 (Connecticut, Maine, Massachusetts, New Hampshire, Rhode Island, Vermont and ten Tribal Nations).

Date of Government Version: 04/12/2012	Source: EPA, Region 1
Date Data Arrived at EDR: 05/02/2012	Telephone: 617-918-1313
Date Made Active in Reports: 07/16/2012	Last EDR Contact: 02/01/2013
Number of Days to Update: 75	Next Scheduled EDR Contact: 05/13/2013
	Data Release Frequency: Varies

INDIAN UST R4: Underground Storage Tanks on Indian Land

The Indian Underground Storage Tank (UST) database provides information about underground storage tanks on Indian land in EPA Region 4 (Alabama, Florida, Georgia, Kentucky, Mississippi, North Carolina, South Carolina, Tennessee and Tribal Nations)

Date of Government Version: 12/14/2011	Source: EPA Region 4
Date Data Arrived at EDR: 12/15/2011	Telephone: 404-562-9424
Date Made Active in Reports: 01/10/2012	Last EDR Contact: 01/28/2013
Number of Days to Update: 26	Next Scheduled EDR Contact: 05/13/2013
	Data Release Frequency: Semi-Annually

INDIAN UST R5: Underground Storage Tanks on Indian Land

The Indian Underground Storage Tank (UST) database provides information about underground storage tanks on Indian land in EPA Region 5 (Michigan, Minnesota and Wisconsin and Tribal Nations).

Date of Government Version: 08/02/2012	Source: EPA Region 5
Date Data Arrived at EDR: 08/03/2012	Telephone: 312-886-6136
Date Made Active in Reports: 11/05/2012	Last EDR Contact: 03/19/2013
Number of Days to Update: 94	Next Scheduled EDR Contact: 05/13/2013
	Data Release Frequency: Varies

GOVERNMENT RECORDS SEARCHED / DATA CURRENCY TRACKING

INDIAN UST R6: Underground Storage Tanks on Indian Land

The Indian Underground Storage Tank (UST) database provides information about underground storage tanks on Indian land in EPA Region 6 (Louisiana, Arkansas, Oklahoma, New Mexico, Texas and 65 Tribes).

Date of Government Version: 05/10/2011	Source: EPA Region 6
Date Data Arrived at EDR: 05/11/2011	Telephone: 214-665-7591
Date Made Active in Reports: 06/14/2011	Last EDR Contact: 03/21/2013
Number of Days to Update: 34	Next Scheduled EDR Contact: 05/13/2013
	Data Release Frequency: Semi-Annually

INDIAN UST R7: Underground Storage Tanks on Indian Land

The Indian Underground Storage Tank (UST) database provides information about underground storage tanks on Indian land in EPA Region 7 (Iowa, Kansas, Missouri, Nebraska, and 9 Tribal Nations).

Date of Government Version: 08/17/2012	Source: EPA Region 7
Date Data Arrived at EDR: 08/28/2012	Telephone: 913-551-7003
Date Made Active in Reports: 10/16/2012	Last EDR Contact: 01/28/2013
Number of Days to Update: 49	Next Scheduled EDR Contact: 05/13/2013
	Data Release Frequency: Varies

INDIAN UST R8: Underground Storage Tanks on Indian Land

The Indian Underground Storage Tank (UST) database provides information about underground storage tanks on Indian land in EPA Region 8 (Colorado, Montana, North Dakota, South Dakota, Utah, Wyoming and 27 Tribal Nations).

Date of Government Version: 08/27/2012	Source: EPA Region 8
Date Data Arrived at EDR: 08/28/2012	Telephone: 303-312-6137
Date Made Active in Reports: 10/16/2012	Last EDR Contact: 01/28/2013
Number of Days to Update: 49	Next Scheduled EDR Contact: 05/13/2013
	Data Release Frequency: Quarterly

INDIAN UST R9: Underground Storage Tanks on Indian Land

The Indian Underground Storage Tank (UST) database provides information about underground storage tanks on Indian land in EPA Region 9 (Arizona, California, Hawaii, Nevada, the Pacific Islands, and Tribal Nations).

Date of Government Version: 09/06/2012	Source: EPA Region 9
Date Data Arrived at EDR: 09/07/2012	Telephone: 415-972-3368
Date Made Active in Reports: 10/16/2012	Last EDR Contact: 01/28/2013
Number of Days to Update: 39	Next Scheduled EDR Contact: 05/13/2013
	Data Release Frequency: Quarterly

INDIAN UST R10: Underground Storage Tanks on Indian Land

The Indian Underground Storage Tank (UST) database provides information about underground storage tanks on Indian land in EPA Region 10 (Alaska, Idaho, Oregon, Washington, and Tribal Nations).

Date of Government Version: 08/01/2012	Source: EPA Region 10
Date Data Arrived at EDR: 08/02/2012	Telephone: 206-553-2857
Date Made Active in Reports: 10/16/2012	Last EDR Contact: 01/28/2013
Number of Days to Update: 75	Next Scheduled EDR Contact: 05/13/2013
	Data Release Frequency: Quarterly

COUNTY RECORDS

ALAMEDA COUNTY:

Underground Tanks

Underground storage tank sites located in Alameda county.

Date of Government Version: 01/16/2013	Source: Alameda County Environmental Health Services
Date Data Arrived at EDR: 01/17/2013	Telephone: 510-567-6700
Date Made Active in Reports: 01/31/2013	Last EDR Contact: 12/28/2012
Number of Days to Update: 14	Next Scheduled EDR Contact: 04/15/2013
	Data Release Frequency: Semi-Annually

AMADOR COUNTY:

GOVERNMENT RECORDS SEARCHED / DATA CURRENCY TRACKING

CUPA Facility List

Cupa Facility List

Date of Government Version: 12/20/2012
Date Data Arrived at EDR: 01/04/2013
Date Made Active in Reports: 02/22/2013
Number of Days to Update: 49

Source: Amador County Environmental Health
Telephone: 209-223-6439
Last EDR Contact: 03/11/2013
Next Scheduled EDR Contact: 06/24/2013
Data Release Frequency: Varies

BUTTE COUNTY:

CUPA Facility Listing

Cupa facility list.

Date of Government Version: 10/16/2012
Date Data Arrived at EDR: 10/17/2012
Date Made Active in Reports: 11/13/2012
Number of Days to Update: 27

Source: Public Health Department
Telephone: 530-538-7149
Last EDR Contact: 01/28/2013
Next Scheduled EDR Contact: 04/29/2013
Data Release Frequency: Varies

CALVERAS COUNTY:

CUPA Facility Listing

Cupa Facility Listing

Date of Government Version: 12/21/2012
Date Data Arrived at EDR: 01/04/2013
Date Made Active in Reports: 02/22/2013
Number of Days to Update: 49

Source: Calveras County Environmental Health
Telephone: 209-754-6399
Last EDR Contact: 12/20/2012
Next Scheduled EDR Contact: 04/15/2013
Data Release Frequency: Quarterly

COLUSA COUNTY:

CUPA Facility List

Cupa facility list.

Date of Government Version: 01/04/2013
Date Data Arrived at EDR: 01/14/2013
Date Made Active in Reports: 03/01/2013
Number of Days to Update: 46

Source: Health & Human Services
Telephone: 530-458-0396
Last EDR Contact: 02/11/2013
Next Scheduled EDR Contact: 05/27/2013
Data Release Frequency: Varies

DEL NORTE COUNTY:

CUPA Facility List

Cupa Facility list

Date of Government Version: 01/09/2013
Date Data Arrived at EDR: 01/10/2013
Date Made Active in Reports: 02/25/2013
Number of Days to Update: 46

Source: Del Norte County Environmental Health Division
Telephone: 707-465-0426
Last EDR Contact: 01/08/2013
Next Scheduled EDR Contact: 05/20/2013
Data Release Frequency: Varies

EL DORADO COUNTY:

GOVERNMENT RECORDS SEARCHED / DATA CURRENCY TRACKING

CUPA Facility List

CUPA facility list.

Date of Government Version: 02/27/2013
Date Data Arrived at EDR: 02/28/2013
Date Made Active in Reports: 03/25/2013
Number of Days to Update: 25

Source: El Dorado County Environmental Management Department
Telephone: 530-621-6623
Last EDR Contact: 02/04/2013
Next Scheduled EDR Contact: 05/20/2013
Data Release Frequency: Varies

FRESNO COUNTY:

CUPA Resources List

Certified Unified Program Agency. CUPA's are responsible for implementing a unified hazardous materials and hazardous waste management regulatory program. The agency provides oversight of businesses that deal with hazardous materials, operate underground storage tanks or aboveground storage tanks.

Date of Government Version: 02/07/2013
Date Data Arrived at EDR: 02/08/2013
Date Made Active in Reports: 03/01/2013
Number of Days to Update: 21

Source: Dept. of Community Health
Telephone: 559-445-3271
Last EDR Contact: 02/08/2013
Next Scheduled EDR Contact: 04/29/2013
Data Release Frequency: Semi-Annually

HUMBOLDT COUNTY:

CUPA Facility List

CUPA facility list.

Date of Government Version: 03/15/2013
Date Data Arrived at EDR: 03/19/2013
Date Made Active in Reports: 03/27/2013
Number of Days to Update: 8

Source: Humboldt County Environmental Health
Telephone: N/A
Last EDR Contact: 02/25/2013
Next Scheduled EDR Contact: 06/10/2013
Data Release Frequency: Varies

IMPERIAL COUNTY:

CUPA Facility List

Cupa facility list.

Date of Government Version: 05/01/2012
Date Data Arrived at EDR: 05/02/2012
Date Made Active in Reports: 06/11/2012
Number of Days to Update: 40

Source: San Diego Border Field Office
Telephone: 760-339-2777
Last EDR Contact: 01/28/2013
Next Scheduled EDR Contact: 05/13/2013
Data Release Frequency: Varies

INYO COUNTY:

CUPA Facility List

Cupa facility list.

Date of Government Version: 06/26/2012
Date Data Arrived at EDR: 06/27/2012
Date Made Active in Reports: 08/17/2012
Number of Days to Update: 51

Source: Inyo County Environmental Health Services
Telephone: 760-878-0238
Last EDR Contact: 02/25/2013
Next Scheduled EDR Contact: 06/10/2013
Data Release Frequency: Varies

KERN COUNTY:

GOVERNMENT RECORDS SEARCHED / DATA CURRENCY TRACKING

Underground Storage Tank Sites & Tank Listing Kern County Sites and Tanks Listing.

Date of Government Version: 08/31/2010
Date Data Arrived at EDR: 09/01/2010
Date Made Active in Reports: 09/30/2010
Number of Days to Update: 29

Source: Kern County Environment Health Services Department
Telephone: 661-862-8700
Last EDR Contact: 02/11/2013
Next Scheduled EDR Contact: 05/27/2013
Data Release Frequency: Quarterly

KINGS COUNTY:

CUPA Facility List

A listing of sites included in the county's Certified Unified Program Agency database. California's Secretary for Environmental Protection established the unified hazardous materials and hazardous waste regulatory program as required by chapter 6.11 of the California Health and Safety Code. The Unified Program consolidates the administration, permits, inspections, and enforcement activities.

Date of Government Version: 02/12/2013
Date Data Arrived at EDR: 02/13/2013
Date Made Active in Reports: 03/21/2013
Number of Days to Update: 36

Source: Kings County Department of Public Health
Telephone: 559-584-1411
Last EDR Contact: 02/12/2013
Next Scheduled EDR Contact: 06/10/2013
Data Release Frequency: Varies

LAKE COUNTY:

CUPA Facility List

Cupa facility list

Date of Government Version: 01/23/2013
Date Data Arrived at EDR: 01/25/2013
Date Made Active in Reports: 02/27/2013
Number of Days to Update: 33

Source: Lake County Environmental Health
Telephone: 707-263-1164
Last EDR Contact: 01/22/2013
Next Scheduled EDR Contact: 05/06/2013
Data Release Frequency: Varies

LOS ANGELES COUNTY:

List of Solid Waste Facilities

Solid Waste Facilities in Los Angeles County.

Date of Government Version: 01/21/2013
Date Data Arrived at EDR: 01/22/2013
Date Made Active in Reports: 03/19/2013
Number of Days to Update: 56

Source: La County Department of Public Works
Telephone: 818-458-5185
Last EDR Contact: 01/22/2013
Next Scheduled EDR Contact: 05/06/2013
Data Release Frequency: Varies

City of Los Angeles Landfills

Landfills owned and maintained by the City of Los Angeles.

Date of Government Version: 03/05/2009
Date Data Arrived at EDR: 03/10/2009
Date Made Active in Reports: 04/08/2009
Number of Days to Update: 29

Source: Engineering & Construction Division
Telephone: 213-473-7869
Last EDR Contact: 02/18/2013
Next Scheduled EDR Contact: 06/03/2013
Data Release Frequency: Varies

Site Mitigation List

Industrial sites that have had some sort of spill or complaint.

GOVERNMENT RECORDS SEARCHED / DATA CURRENCY TRACKING

Date of Government Version: 01/30/2013
Date Data Arrived at EDR: 02/21/2013
Date Made Active in Reports: 03/25/2013
Number of Days to Update: 32

Source: Community Health Services
Telephone: 323-890-7806
Last EDR Contact: 01/21/2013
Next Scheduled EDR Contact: 05/06/2013
Data Release Frequency: Annually

City of El Segundo Underground Storage Tank

Underground storage tank sites located in El Segundo city.

Date of Government Version: 01/23/2013
Date Data Arrived at EDR: 01/25/2013
Date Made Active in Reports: 03/27/2013
Number of Days to Update: 61

Source: City of El Segundo Fire Department
Telephone: 310-524-2236
Last EDR Contact: 01/21/2013
Next Scheduled EDR Contact: 05/06/2013
Data Release Frequency: Semi-Annually

City of Long Beach Underground Storage Tank

Underground storage tank sites located in the city of Long Beach.

Date of Government Version: 03/28/2003
Date Data Arrived at EDR: 10/23/2003
Date Made Active in Reports: 11/26/2003
Number of Days to Update: 34

Source: City of Long Beach Fire Department
Telephone: 562-570-2563
Last EDR Contact: 01/29/2013
Next Scheduled EDR Contact: 05/13/2013
Data Release Frequency: Annually

City of Torrance Underground Storage Tank

Underground storage tank sites located in the city of Torrance.

Date of Government Version: 01/14/2013
Date Data Arrived at EDR: 01/15/2013
Date Made Active in Reports: 01/31/2013
Number of Days to Update: 16

Source: City of Torrance Fire Department
Telephone: 310-618-2973
Last EDR Contact: 01/14/2013
Next Scheduled EDR Contact: 04/29/2013
Data Release Frequency: Semi-Annually

MADERA COUNTY:

CUPA Facility List

A listing of sites included in the county's Certified Unified Program Agency database. California's Secretary for Environmental Protection established the unified hazardous materials and hazardous waste regulatory program as required by chapter 6.11 of the California Health and Safety Code. The Unified Program consolidates the administration, permits, inspections, and enforcement activities.

Date of Government Version: 12/18/2012
Date Data Arrived at EDR: 12/20/2012
Date Made Active in Reports: 02/08/2013
Number of Days to Update: 50

Source: Madera County Environmental Health
Telephone: 559-675-7823
Last EDR Contact: 02/25/2013
Next Scheduled EDR Contact: 06/10/2013
Data Release Frequency: Varies

MARIN COUNTY:

Underground Storage Tank Sites

Currently permitted USTs in Marin County.

Date of Government Version: 11/26/2012
Date Data Arrived at EDR: 11/28/2012
Date Made Active in Reports: 01/21/2013
Number of Days to Update: 54

Source: Public Works Department Waste Management
Telephone: 415-499-6647
Last EDR Contact: 01/21/2013
Next Scheduled EDR Contact: 04/22/2013
Data Release Frequency: Semi-Annually

MERCED COUNTY:

GOVERNMENT RECORDS SEARCHED / DATA CURRENCY TRACKING

CUPA Facility List

CUPA facility list.

Date of Government Version: 02/25/2013
Date Data Arrived at EDR: 02/26/2013
Date Made Active in Reports: 03/25/2013
Number of Days to Update: 27

Source: Merced County Environmental Health
Telephone: 209-381-1094
Last EDR Contact: 02/25/2013
Next Scheduled EDR Contact: 06/10/2013
Data Release Frequency: Varies

MONO COUNTY:

CUPA Facility List

CUPA Facility List

Date of Government Version: 03/04/2013
Date Data Arrived at EDR: 03/08/2013
Date Made Active in Reports: 03/25/2013
Number of Days to Update: 17

Source: Mono County Health Department
Telephone: 760-932-5580
Last EDR Contact: 03/04/2013
Next Scheduled EDR Contact: 06/17/2013
Data Release Frequency: Varies

MONTEREY COUNTY:

CUPA Facility Listing

CUPA Program listing from the Environmental Health Division.

Date of Government Version: 03/14/2013
Date Data Arrived at EDR: 03/15/2013
Date Made Active in Reports: 03/27/2013
Number of Days to Update: 12

Source: Monterey County Health Department
Telephone: 831-796-1297
Last EDR Contact: 02/25/2013
Next Scheduled EDR Contact: 06/10/2013
Data Release Frequency: Varies

NAPA COUNTY:

Sites With Reported Contamination

A listing of leaking underground storage tank sites located in Napa county.

Date of Government Version: 12/05/2011
Date Data Arrived at EDR: 12/06/2011
Date Made Active in Reports: 02/07/2012
Number of Days to Update: 63

Source: Napa County Department of Environmental Management
Telephone: 707-253-4269
Last EDR Contact: 03/04/2013
Next Scheduled EDR Contact: 06/17/2013
Data Release Frequency: No Update Planned

Closed and Operating Underground Storage Tank Sites

Underground storage tank sites located in Napa county.

Date of Government Version: 01/15/2008
Date Data Arrived at EDR: 01/16/2008
Date Made Active in Reports: 02/08/2008
Number of Days to Update: 23

Source: Napa County Department of Environmental Management
Telephone: 707-253-4269
Last EDR Contact: 03/04/2013
Next Scheduled EDR Contact: 06/17/2013
Data Release Frequency: No Update Planned

NEVADA COUNTY:

CUPA Facility List

CUPA facility list.

GOVERNMENT RECORDS SEARCHED / DATA CURRENCY TRACKING

Date of Government Version: 03/08/2013
Date Data Arrived at EDR: 03/08/2013
Date Made Active in Reports: 03/25/2013
Number of Days to Update: 17

Source: Community Development Agency
Telephone: 530-265-1467
Last EDR Contact: 03/08/2013
Next Scheduled EDR Contact: 05/20/2013
Data Release Frequency: Varies

ORANGE COUNTY:

List of Industrial Site Cleanups

Petroleum and non-petroleum spills.

Date of Government Version: 02/04/2013
Date Data Arrived at EDR: 02/26/2013
Date Made Active in Reports: 03/20/2013
Number of Days to Update: 22

Source: Health Care Agency
Telephone: 714-834-3446
Last EDR Contact: 02/13/2013
Next Scheduled EDR Contact: 05/27/2013
Data Release Frequency: Annually

List of Underground Storage Tank Cleanups

Orange County Underground Storage Tank Cleanups (LUST).

Date of Government Version: 02/04/2013
Date Data Arrived at EDR: 02/19/2013
Date Made Active in Reports: 03/20/2013
Number of Days to Update: 29

Source: Health Care Agency
Telephone: 714-834-3446
Last EDR Contact: 02/12/2013
Next Scheduled EDR Contact: 05/27/2013
Data Release Frequency: Quarterly

List of Underground Storage Tank Facilities

Orange County Underground Storage Tank Facilities (UST).

Date of Government Version: 02/04/2013
Date Data Arrived at EDR: 02/18/2013
Date Made Active in Reports: 03/27/2013
Number of Days to Update: 37

Source: Health Care Agency
Telephone: 714-834-3446
Last EDR Contact: 02/12/2013
Next Scheduled EDR Contact: 05/27/2013
Data Release Frequency: Quarterly

RIVERSIDE COUNTY:

Listing of Underground Tank Cleanup Sites

Riverside County Underground Storage Tank Cleanup Sites (LUST).

Date of Government Version: 02/04/2013
Date Data Arrived at EDR: 02/05/2013
Date Made Active in Reports: 03/20/2013
Number of Days to Update: 43

Source: Department of Environmental Health
Telephone: 951-358-5055
Last EDR Contact: 03/25/2013
Next Scheduled EDR Contact: 07/08/2013
Data Release Frequency: Quarterly

Underground Storage Tank Tank List

Underground storage tank sites located in Riverside county.

Date of Government Version: 02/04/2013
Date Data Arrived at EDR: 02/05/2013
Date Made Active in Reports: 03/27/2013
Number of Days to Update: 50

Source: Department of Environmental Health
Telephone: 951-358-5055
Last EDR Contact: 03/25/2013
Next Scheduled EDR Contact: 07/08/2013
Data Release Frequency: Quarterly

SACRAMENTO COUNTY:

GOVERNMENT RECORDS SEARCHED / DATA CURRENCY TRACKING

Toxic Site Clean-Up List

List of sites where unauthorized releases of potentially hazardous materials have occurred.

Date of Government Version: 11/29/2012
Date Data Arrived at EDR: 01/10/2013
Date Made Active in Reports: 02/22/2013
Number of Days to Update: 43

Source: Sacramento County Environmental Management
Telephone: 916-875-8406
Last EDR Contact: 01/07/2013
Next Scheduled EDR Contact: 04/22/2013
Data Release Frequency: Quarterly

Master Hazardous Materials Facility List

Any business that has hazardous materials on site - hazardous material storage sites, underground storage tanks, waste generators.

Date of Government Version: 11/02/2012
Date Data Arrived at EDR: 01/15/2013
Date Made Active in Reports: 02/22/2013
Number of Days to Update: 38

Source: Sacramento County Environmental Management
Telephone: 916-875-8406
Last EDR Contact: 01/07/2013
Next Scheduled EDR Contact: 04/22/2013
Data Release Frequency: Quarterly

SAN BERNARDINO COUNTY:

Hazardous Material Permits

This listing includes underground storage tanks, medical waste handlers/generators, hazardous materials handlers, hazardous waste generators, and waste oil generators/handlers.

Date of Government Version: 03/04/2013
Date Data Arrived at EDR: 03/05/2013
Date Made Active in Reports: 03/25/2013
Number of Days to Update: 20

Source: San Bernardino County Fire Department Hazardous Materials Division
Telephone: 909-387-3041
Last EDR Contact: 02/11/2013
Next Scheduled EDR Contact: 05/27/2013
Data Release Frequency: Quarterly

SAN DIEGO COUNTY:

Hazardous Materials Management Division Database

The database includes: HE58 - This report contains the business name, site address, business phone number, establishment 'H' permit number, type of permit, and the business status. HE17 - In addition to providing the same information provided in the HE58 listing, HE17 provides inspection dates, violations received by the establishment, hazardous waste generated, the quantity, method of storage, treatment/disposal of waste and the hauler, and information on underground storage tanks. Unauthorized Release List - Includes a summary of environmental contamination cases in San Diego County (underground tank cases, non-tank cases, groundwater contamination, and soil contamination are included.)

Date of Government Version: 08/17/2012
Date Data Arrived at EDR: 08/20/2012
Date Made Active in Reports: 10/03/2012
Number of Days to Update: 44

Source: Hazardous Materials Management Division
Telephone: 619-338-2268
Last EDR Contact: 03/08/2013
Next Scheduled EDR Contact: 06/24/2013
Data Release Frequency: Quarterly

Solid Waste Facilities

San Diego County Solid Waste Facilities.

Date of Government Version: 10/31/2012
Date Data Arrived at EDR: 11/06/2012
Date Made Active in Reports: 11/30/2012
Number of Days to Update: 24

Source: Department of Health Services
Telephone: 619-338-2209
Last EDR Contact: 01/28/2013
Next Scheduled EDR Contact: 05/13/2013
Data Release Frequency: Varies

GOVERNMENT RECORDS SEARCHED / DATA CURRENCY TRACKING

Environmental Case Listing

The listing contains all underground tank release cases and projects pertaining to properties contaminated with hazardous substances that are actively under review by the Site Assessment and Mitigation Program.

Date of Government Version: 03/23/2010	Source: San Diego County Department of Environmental Health
Date Data Arrived at EDR: 06/15/2010	Telephone: 619-338-2371
Date Made Active in Reports: 07/09/2010	Last EDR Contact: 03/12/2013
Number of Days to Update: 24	Next Scheduled EDR Contact: 06/24/2013
	Data Release Frequency: No Update Planned

SAN FRANCISCO COUNTY:

Local Oversight Facilities

A listing of leaking underground storage tank sites located in San Francisco county.

Date of Government Version: 09/19/2008	Source: Department Of Public Health San Francisco County
Date Data Arrived at EDR: 09/19/2008	Telephone: 415-252-3920
Date Made Active in Reports: 09/29/2008	Last EDR Contact: 02/11/2013
Number of Days to Update: 10	Next Scheduled EDR Contact: 05/27/2013
	Data Release Frequency: Quarterly

Underground Storage Tank Information

Underground storage tank sites located in San Francisco county.

Date of Government Version: 11/29/2010	Source: Department of Public Health
Date Data Arrived at EDR: 03/10/2011	Telephone: 415-252-3920
Date Made Active in Reports: 03/15/2011	Last EDR Contact: 02/11/2013
Number of Days to Update: 5	Next Scheduled EDR Contact: 05/27/2013
	Data Release Frequency: Quarterly

SAN JOAQUIN COUNTY:

San Joaquin Co. UST

A listing of underground storage tank locations in San Joaquin county.

Date of Government Version: 02/01/2013	Source: Environmental Health Department
Date Data Arrived at EDR: 02/05/2013	Telephone: N/A
Date Made Active in Reports: 03/27/2013	Last EDR Contact: 03/25/2013
Number of Days to Update: 50	Next Scheduled EDR Contact: 07/08/2013
	Data Release Frequency: Semi-Annually

SAN LUIS OBISPO COUNTY:

CUPA Facility List

Cupa Facility List.

Date of Government Version: 02/26/2013	Source: San Luis Obispo County Public Health Department
Date Data Arrived at EDR: 02/26/2013	Telephone: 805-781-5596
Date Made Active in Reports: 03/25/2013	Last EDR Contact: 02/25/2013
Number of Days to Update: 27	Next Scheduled EDR Contact: 06/10/2013
	Data Release Frequency: Varies

SAN MATEO COUNTY:

Fuel Leak List

A listing of leaking underground storage tank sites located in San Mateo county.

GOVERNMENT RECORDS SEARCHED / DATA CURRENCY TRACKING

Date of Government Version: 03/18/2013
Date Data Arrived at EDR: 03/19/2013
Date Made Active in Reports: 03/27/2013
Number of Days to Update: 8

Source: San Mateo County Environmental Health Services Division
Telephone: 650-363-1921
Last EDR Contact: 03/18/2013
Next Scheduled EDR Contact: 07/01/2013
Data Release Frequency: Semi-Annually

SANTA BARBARA COUNTY:

CUPA Facility Listing

CUPA Program Listing from the Environmental Health Services division.

Date of Government Version: 09/08/2011
Date Data Arrived at EDR: 09/09/2011
Date Made Active in Reports: 10/07/2011
Number of Days to Update: 28

Source: Santa Barbara County Public Health Department
Telephone: 805-686-8167
Last EDR Contact: 03/12/2013
Next Scheduled EDR Contact: 06/10/2013
Data Release Frequency: Varies

SANTA CLARA COUNTY:

Cupa Facility List

Cupa facility list

Date of Government Version: 03/04/2013
Date Data Arrived at EDR: 03/05/2013
Date Made Active in Reports: 03/25/2013
Number of Days to Update: 20

Source: Department of Environmental Health
Telephone: 408-918-1973
Last EDR Contact: 03/04/2013
Next Scheduled EDR Contact: 06/17/2013
Data Release Frequency: Varies

LOP Listing

A listing of leaking underground storage tanks located in Santa Clara county.

Date of Government Version: 03/04/2013
Date Data Arrived at EDR: 03/06/2013
Date Made Active in Reports: 03/25/2013
Number of Days to Update: 19

Source: Department of Environmental Health
Telephone: 408-918-3417
Last EDR Contact: 03/04/2013
Next Scheduled EDR Contact: 06/17/2013
Data Release Frequency: Annually

SANTA CRUZ COUNTY:

CUPA Facility List

CUPA facility listing.

Date of Government Version: 02/26/2013
Date Data Arrived at EDR: 02/26/2013
Date Made Active in Reports: 03/20/2013
Number of Days to Update: 22

Source: Santa Cruz County Environmental Health
Telephone: 831-464-2761
Last EDR Contact: 02/25/2013
Next Scheduled EDR Contact: 06/10/2013
Data Release Frequency: Varies

SHASTA COUNTY:

CUPA Facility List

Cupa Facility List.

Date of Government Version: 03/15/2013
Date Data Arrived at EDR: 03/15/2013
Date Made Active in Reports: 03/27/2013
Number of Days to Update: 12

Source: Shasta County Department of Resource Management
Telephone: 530-225-5789
Last EDR Contact: 02/25/2013
Next Scheduled EDR Contact: 06/10/2013
Data Release Frequency: Varies

SOLANO COUNTY:

GOVERNMENT RECORDS SEARCHED / DATA CURRENCY TRACKING

Leaking Underground Storage Tanks

A listing of leaking underground storage tank sites located in Solano county.

Date of Government Version: 12/12/2012
Date Data Arrived at EDR: 12/17/2012
Date Made Active in Reports: 01/22/2013
Number of Days to Update: 36

Source: Solano County Department of Environmental Management
Telephone: 707-784-6770
Last EDR Contact: 03/18/2013
Next Scheduled EDR Contact: 07/01/2013
Data Release Frequency: Quarterly

Underground Storage Tanks

Underground storage tank sites located in Solano county.

Date of Government Version: 12/12/2012
Date Data Arrived at EDR: 12/17/2012
Date Made Active in Reports: 01/25/2013
Number of Days to Update: 39

Source: Solano County Department of Environmental Management
Telephone: 707-784-6770
Last EDR Contact: 03/18/2013
Next Scheduled EDR Contact: 07/01/2013
Data Release Frequency: Quarterly

SONOMA COUNTY:

Cupa Facility List

Cupa Facility list

Date of Government Version: 01/10/2013
Date Data Arrived at EDR: 01/16/2013
Date Made Active in Reports: 02/27/2013
Number of Days to Update: 42

Source: County of Sonoma Fire & Emergency Services Department
Telephone: 707-565-1174
Last EDR Contact: 01/08/2013
Next Scheduled EDR Contact: 04/15/2013
Data Release Frequency: Varies

Leaking Underground Storage Tank Sites

A listing of leaking underground storage tank sites located in Sonoma county.

Date of Government Version: 01/02/2013
Date Data Arrived at EDR: 01/02/2013
Date Made Active in Reports: 01/25/2013
Number of Days to Update: 23

Source: Department of Health Services
Telephone: 707-565-6565
Last EDR Contact: 12/28/2012
Next Scheduled EDR Contact: 04/15/2013
Data Release Frequency: Quarterly

SUTTER COUNTY:

Underground Storage Tanks

Underground storage tank sites located in Sutter county.

Date of Government Version: 03/13/2013
Date Data Arrived at EDR: 03/14/2013
Date Made Active in Reports: 03/27/2013
Number of Days to Update: 13

Source: Sutter County Department of Agriculture
Telephone: 530-822-7500
Last EDR Contact: 03/11/2013
Next Scheduled EDR Contact: 06/24/2013
Data Release Frequency: Semi-Annually

TUOLUMNE COUNTY:

CUPA Facility List

Cupa facility list

Date of Government Version: 01/14/2013
Date Data Arrived at EDR: 01/16/2013
Date Made Active in Reports: 02/27/2013
Number of Days to Update: 42

Source: Division of Environmental Health
Telephone: 209-533-5633
Last EDR Contact: 01/04/2013
Next Scheduled EDR Contact: 04/29/2013
Data Release Frequency: Varies

VENTURA COUNTY:

GOVERNMENT RECORDS SEARCHED / DATA CURRENCY TRACKING

Inventory of Illegal Abandoned and Inactive Sites

Ventura County Inventory of Closed, Illegal Abandoned, and Inactive Sites.

Date of Government Version: 12/01/2011	Source: Environmental Health Division
Date Data Arrived at EDR: 12/01/2011	Telephone: 805-654-2813
Date Made Active in Reports: 01/19/2012	Last EDR Contact: 01/07/2013
Number of Days to Update: 49	Next Scheduled EDR Contact: 04/22/2013
	Data Release Frequency: Annually

Listing of Underground Tank Cleanup Sites

Ventura County Underground Storage Tank Cleanup Sites (LUST).

Date of Government Version: 05/29/2008	Source: Environmental Health Division
Date Data Arrived at EDR: 06/24/2008	Telephone: 805-654-2813
Date Made Active in Reports: 07/31/2008	Last EDR Contact: 02/18/2013
Number of Days to Update: 37	Next Scheduled EDR Contact: 06/03/2013
	Data Release Frequency: Quarterly

Underground Tank Closed Sites List

Ventura County Operating Underground Storage Tank Sites (UST)/Underground Tank Closed Sites List.

Date of Government Version: 12/04/2012	Source: Environmental Health Division
Date Data Arrived at EDR: 12/20/2012	Telephone: 805-654-2813
Date Made Active in Reports: 01/25/2013	Last EDR Contact: 03/18/2013
Number of Days to Update: 36	Next Scheduled EDR Contact: 07/01/2013
	Data Release Frequency: Quarterly

YOLO COUNTY:

Underground Storage Tank Comprehensive Facility Report

Underground storage tank sites located in Yolo county.

Date of Government Version: 12/19/2012	Source: Yolo County Department of Health
Date Data Arrived at EDR: 12/28/2012	Telephone: 530-666-8646
Date Made Active in Reports: 01/30/2013	Last EDR Contact: 03/25/2013
Number of Days to Update: 33	Next Scheduled EDR Contact: 07/08/2013
	Data Release Frequency: Annually

YUBA COUNTY:

CUPA Facility List

CUPA facility listing for Yuba County.

Date of Government Version: 03/05/2013	Source: Yuba County Environmental Health Department
Date Data Arrived at EDR: 03/06/2013	Telephone: 530-749-7523
Date Made Active in Reports: 03/25/2013	Last EDR Contact: 02/18/2013
Number of Days to Update: 19	Next Scheduled EDR Contact: 05/20/2013
	Data Release Frequency: Varies

OTHER DATABASE(S)

Depending on the geographic area covered by this report, the data provided in these specialty databases may or may not be complete. For example, the existence of wetlands information data in a specific report does not mean that all wetlands in the area covered by the report are included. Moreover, the absence of any reported wetlands information does not necessarily mean that wetlands do not exist in the area covered by the report.

GOVERNMENT RECORDS SEARCHED / DATA CURRENCY TRACKING

CT MANIFEST: Hazardous Waste Manifest Data

Facility and manifest data. Manifest is a document that lists and tracks hazardous waste from the generator through transporters to a tsd facility.

Date of Government Version: 02/18/2013
Date Data Arrived at EDR: 02/18/2013
Date Made Active in Reports: 03/21/2013
Number of Days to Update: 31

Source: Department of Energy & Environmental Protection
Telephone: 860-424-3375
Last EDR Contact: 02/18/2013
Next Scheduled EDR Contact: 06/03/2013
Data Release Frequency: Annually

NJ MANIFEST: Manifest Information

Hazardous waste manifest information.

Date of Government Version: 12/31/2011
Date Data Arrived at EDR: 07/19/2012
Date Made Active in Reports: 08/28/2012
Number of Days to Update: 40

Source: Department of Environmental Protection
Telephone: N/A
Last EDR Contact: 01/15/2013
Next Scheduled EDR Contact: 04/29/2013
Data Release Frequency: Annually

NY MANIFEST: Facility and Manifest Data

Manifest is a document that lists and tracks hazardous waste from the generator through transporters to a TSD facility.

Date of Government Version: 02/01/2013
Date Data Arrived at EDR: 02/07/2013
Date Made Active in Reports: 03/15/2013
Number of Days to Update: 36

Source: Department of Environmental Conservation
Telephone: 518-402-8651
Last EDR Contact: 02/07/2013
Next Scheduled EDR Contact: 05/20/2013
Data Release Frequency: Annually

PA MANIFEST: Manifest Information

Hazardous waste manifest information.

Date of Government Version: 12/31/2011
Date Data Arrived at EDR: 07/23/2012
Date Made Active in Reports: 09/18/2012
Number of Days to Update: 57

Source: Department of Environmental Protection
Telephone: 717-783-8990
Last EDR Contact: 01/21/2013
Next Scheduled EDR Contact: 05/06/2013
Data Release Frequency: Annually

RI MANIFEST: Manifest information

Hazardous waste manifest information

Date of Government Version: 12/31/2011
Date Data Arrived at EDR: 06/22/2012
Date Made Active in Reports: 07/31/2012
Number of Days to Update: 39

Source: Department of Environmental Management
Telephone: 401-222-2797
Last EDR Contact: 02/25/2013
Next Scheduled EDR Contact: 06/10/2013
Data Release Frequency: Annually

WI MANIFEST: Manifest Information

Hazardous waste manifest information.

Date of Government Version: 12/31/2011
Date Data Arrived at EDR: 07/19/2012
Date Made Active in Reports: 09/27/2012
Number of Days to Update: 70

Source: Department of Natural Resources
Telephone: N/A
Last EDR Contact: 03/18/2013
Next Scheduled EDR Contact: 07/01/2013
Data Release Frequency: Annually

Oil/Gas Pipelines: This data was obtained by EDR from the USGS in 1994. It is referred to by USGS as GeoData Digital Line Graphs from 1:100,000-Scale Maps. It was extracted from the transportation category including some oil, but primarily gas pipelines.

Sensitive Receptors: There are individuals deemed sensitive receptors due to their fragile immune systems and special sensitivity to environmental discharges. These sensitive receptors typically include the elderly, the sick, and children. While the location of all sensitive receptors cannot be determined, EDR indicates those buildings and facilities - schools, daycares, hospitals, medical centers, and nursing homes - where individuals who are sensitive receptors are likely to be located.

GOVERNMENT RECORDS SEARCHED / DATA CURRENCY TRACKING

AHA Hospitals:

Source: American Hospital Association, Inc.

Telephone: 312-280-5991

The database includes a listing of hospitals based on the American Hospital Association's annual survey of hospitals.

Medical Centers: Provider of Services Listing

Source: Centers for Medicare & Medicaid Services

Telephone: 410-786-3000

A listing of hospitals with Medicare provider number, produced by Centers of Medicare & Medicaid Services, a federal agency within the U.S. Department of Health and Human Services.

Nursing Homes

Source: National Institutes of Health

Telephone: 301-594-6248

Information on Medicare and Medicaid certified nursing homes in the United States.

Public Schools

Source: National Center for Education Statistics

Telephone: 202-502-7300

The National Center for Education Statistics' primary database on elementary and secondary public education in the United States. It is a comprehensive, annual, national statistical database of all public elementary and secondary schools and school districts, which contains data that are comparable across all states.

Private Schools

Source: National Center for Education Statistics

Telephone: 202-502-7300

The National Center for Education Statistics' primary database on private school locations in the United States.

Daycare Centers: Licensed Facilities

Source: Department of Social Services

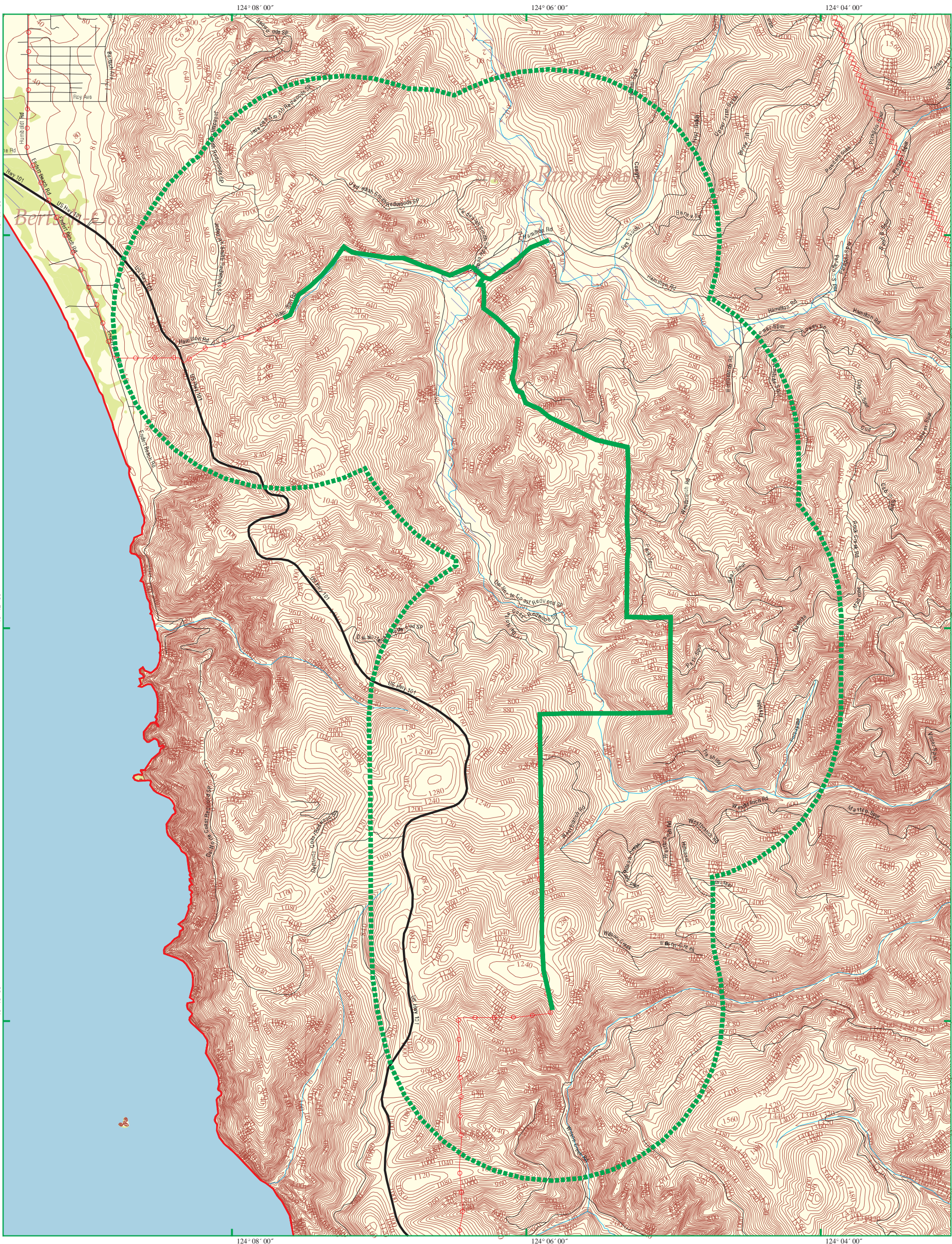
Telephone: 916-657-4041

Flood Zone Data: This data, available in select counties across the country, was obtained by EDR in 2003 & 2011 from the Federal Emergency Management Agency (FEMA). Data depicts 100-year and 500-year flood zones as defined by FEMA.

NWI: National Wetlands Inventory. This data, available in select counties across the country, was obtained by EDR in 2002 and 2005 from the U.S. Fish and Wildlife Service.

STREET AND ADDRESS INFORMATION

© 2010 Tele Atlas North America, Inc. All rights reserved. This material is proprietary and the subject of copyright protection and other intellectual property rights owned by or licensed to Tele Atlas North America, Inc. The use of this material is subject to the terms of a license agreement. You will be held liable for any unauthorized copying or disclosure of this material.



EDR DataMap® - Corridor Study

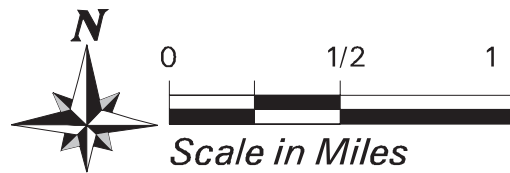
Del Norte to Yurok Electric Transmission Line



Klamath, CA



- | | | | |
|--|---------------|-------------|----------------------------|
| Listed Sites | Major Roads | Pipelines | Superfund Sites |
| Earthquake Epicenters (Richter 5 or greater) | Waterways | Powerlines | Indian Reservations BIA |
| Search Boundary | Railroads | Fault Lines | 100-Yr Flood Zones |
| Roads | Contour Lines | Water | National Wetland Inventory |



APPENDIX F

REDWOOD NATIONAL AND STATE PARKS
SUPERINTENDENTS' POLICY NO. 1
SEASONAL ROAD USE IN REDWOOD NATIONAL AND STATE PARKS

This page intentionally left blank.



United States Department of the Interior
California Department of Parks and Recreation
Redwood National and State Parks
1111 Second Street
Crescent City, California 95531



D30

May 6, 2011

SUPERINTENDENTS' POLICY No. 1

To: All Employees

From: RNSP Superintendents

Subject: Seasonal Road Use in Redwood National and State Parks (RNSP)

SCOPE AND PURPOSE

The purpose of this Superintendents' Policy is to prevent damage to seasonal park roads from vehicle use during wet weather conditions, and to protect aquatic resources and water quality in park streams. This policy applies to all RNSP employees, volunteers, contractors and cooperators using non-public seasonal roads, as well as public use roads, within RNSP. Supervisors are responsible for ensuring that their employees, volunteers, contractors and cooperators are familiar with this policy.

BACKGROUND

All-season roads are constructed with gravel or paved surfaces. They have hardened surfaces and can be driven on with standard vehicles during all weather conditions. Seasonal roads are constructed with a surface consisting of native material that can deform and erode when conditions are too wet. Damage occurs through rutting which compromises the effectiveness of road surface drainage and allows runoff from precipitation to concentrate on the road surface and cause erosion. Erosion and sedimentation from roads impacts aquatic resources and water quality. Use of seasonal roads during wet weather conditions significantly increases road repair and maintenance costs.

POLICY

Seasonal roads in the park shall not be driven on with vehicles during the winter period or within 24 hours following rainfall greater than 0.5-inch that occurs outside of the winter period. Seasonal roads can be driven on by ATVs/UTVs providing ATV/UTV use does not deform or rut the road surface. RNSP employees or volunteers operating an ATV/UTV within the park shall abide by Safety Management Policy No. 14 *Use of All-Terrain Vehicles*. Emergencies are exempt from this policy. Emergencies are defined as medical assistance, search and rescues, law enforcement responses, fires and other immediate threats to the public or park resources.

The winter period is defined as October 15 through May 15 or the beginning of the prolonged stormy weather season to the beginning of the prolonged dry weather season on the North Coast. Seasonal road closures can occur before October 15 if sufficient precipitation has occurred, and seasonal closures can extend beyond May 15 if roads have not had sufficient time to dry. Similarly, seasonal road closures can occur after October 15 if the rainy season has not yet produced sufficient precipitation to warrant closures. The RNSP Superintendents or their designee(s) shall determine when seasonal roads are to be closed and re-opened.

As a general practice, vehicles driven on backcountry roads should have four-wheel drive capability. Tire chains shall not be used as a means to improve traction in order to gain access and should only be employed in emergencies or situations when extrication is not possible through mechanical assistance (e.g., winch, grip hoist, come-along, or towing by another vehicle).

List of RNSP All-Season Roads

(All other roads in the parks not listed here, or identified on the maps, are considered Seasonal Roads.)

Prairie Creek

Geneva
Holter Ridge
Holter Ridge
North Skunk Cabbage
Wolf Creek
Wolf Creek Fire Cache

West Side Redwood Creek

A-9
A-9-9
L-1 E & W)
L-1-1 (Clay rd)
L-line
L-2
L-2-2
Old SOC
Rodger's Peak
West Side Access
Y-line

East Side Redwood Creek

C-line East
East Side Lookout
K&K
Robbers Gulch
Rock Quarry
Schoolhouse Peak
Williams Ridge

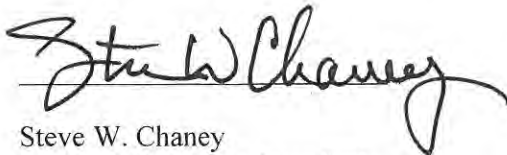
North Roads (except for roads in Mill & Rock Creek Watersheds -- refer to map)

DeMartin Prairie
Howland Hill
Pacamo Camp
Society Hole

Hiouchi Fire Cache
Howland Hill Outdoor School
Peacock Bar
Ginny Lane

Hiouchi Flat
Jed Trailer Pad Road
Service N-1
Walker Rd End

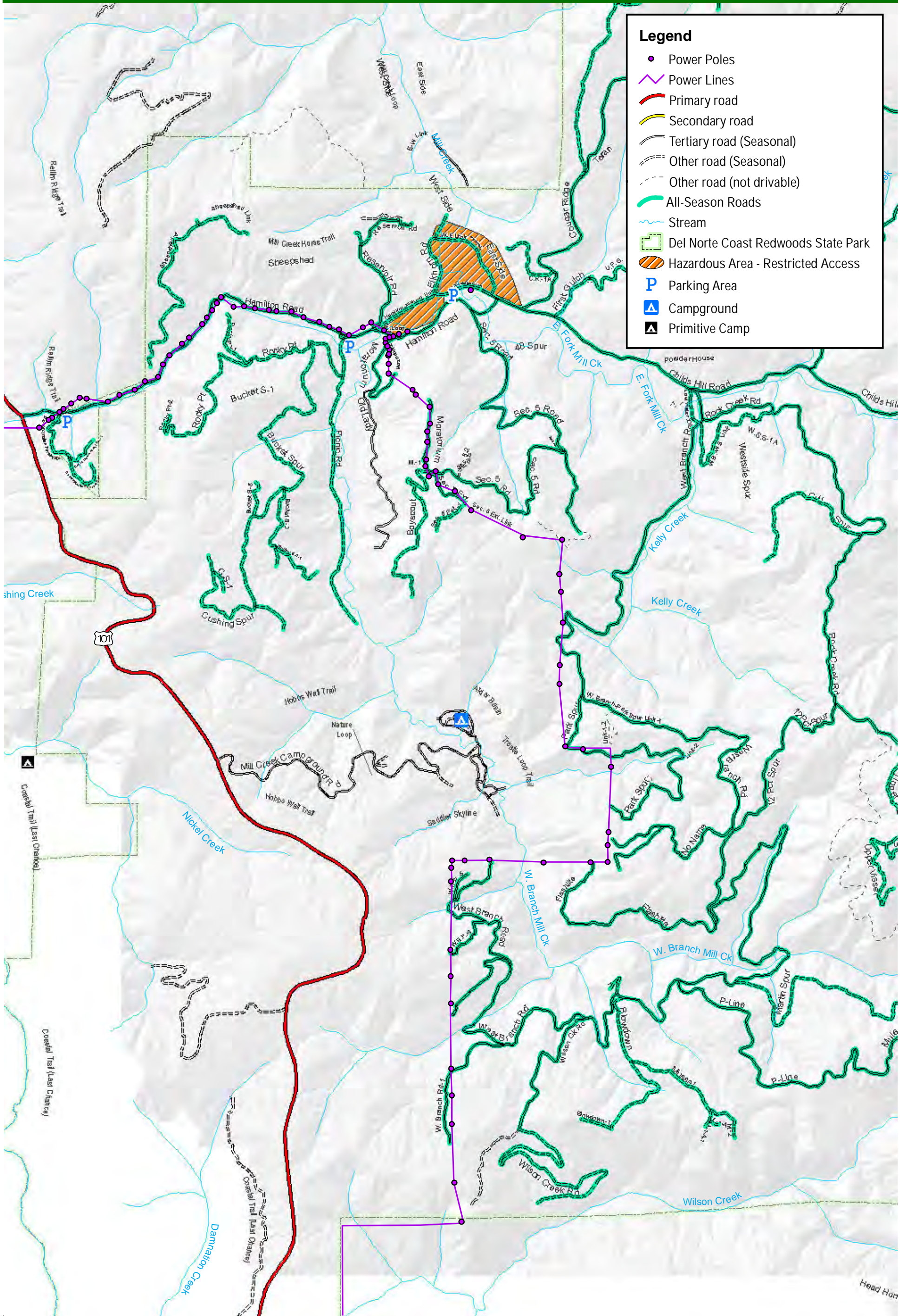
Maps displaying all-season roads for RSNP North, RSNP South, and Mill Creek Watersheds are available on InsideREDW.



Steve W. Chaney
National Park Superintendent



Jeff Bomke
State Parks Superintendent



Legend

- Power Poles
- Power Lines
- Primary road
- Secondary road
- Tertiary road (Seasonal)
- Other road (Seasonal)
- Other road (not drivable)
- All-Season Roads
- Stream
- Del Norte Coast Redwoods State Park
- ▨ Hazardous Area - Restricted Access
- P Parking Area
- ▲ Campground
- ▲ Primitive Camp

Power Line Access
Del Norte Coast Redwoods State Park
Humboldt and Del Norte Counties, CA

