

PHEPHA MV SECURITY SERVICES PTY LTD

T/A SUPERPRO ALARMS



Powered by  **JIREH**
TECHNOLOGIES
Our technology partner

COMPANY PROFILE



CCTV
CAMERAS



ACCESS
CONTROL



BIOMETRICS



GATE
AUTOMATION



ELECTRIC
FENCING



ALARM
SYSTEMS



FIRE
DETECTION



PHYSICAL
BARRIERS

TABLE OF CONTENTS

1. ABOUT US
2. ORGANIZATIONAL STRUCTURE
3. PRODUCTS AND SERVICES
4. CLOSE CIRCUIT TV SYSTEM
5. FIRE AND GAS DETECTION SYSTEM
6. DRONE SECURITY AND SURVEILLANCE
7. ACCESS CONTROL SYSTEM
8. BIOMETRIC HAND AND FINGERPRINT IDENTITY SYSTEMS
9. BURGLAR ALARM SYSTEM
10. INTERCOM AND VIDEO INTERCOM SYSTEM
11. PUBLIC ADDRESS SYSTEM
12. DATA AND VOICE SYSTEMS
13. VEHICLE AND TRANSPORT
14. OUTDOOR PERIMETER INTRUSION AND DETECTION SYSTEMS
15. CAR PLATE RECOGNITION SYSTEMS
16. WALK THROUGH WEAPON AND METAL DETECTOR
17. X-RAY SECURITY SCREENING SYSTEMS
18. GARAGE ENTRANCE CONTROL SYSTEM
19. SOLUTIONS AND TECHNOLOGIES
20. SOME REFERENCES
21. COMPANY INFORMATION
22. CONTACT DETAILS



1. ABOUT US

Phepha MV Security was constituted in 2007 as cc and later converted into Pty Ltd in 2017. in order to provide highest technological solutions and services in the field of Electric, Mechanic, Security and Communications sector for privately owned or governmental leading institutions in South Africa.

Phepha MV's service concept depends on **Unconditional Customer Satisfaction** . Together with its professional staff operating in Malelane headquarters and satellite offices in all the regions of Mpumalanga, **Phepha MV** is in full control of all of its installed systems located allover Mpumalanga, trusting its technical staff that consists of highly expertised engineers and technicians in advanced security technologies and telecommunication systems certified by our ICASA licensed technology partner Jireh technologies.

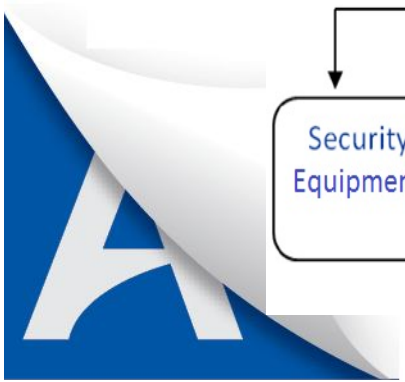
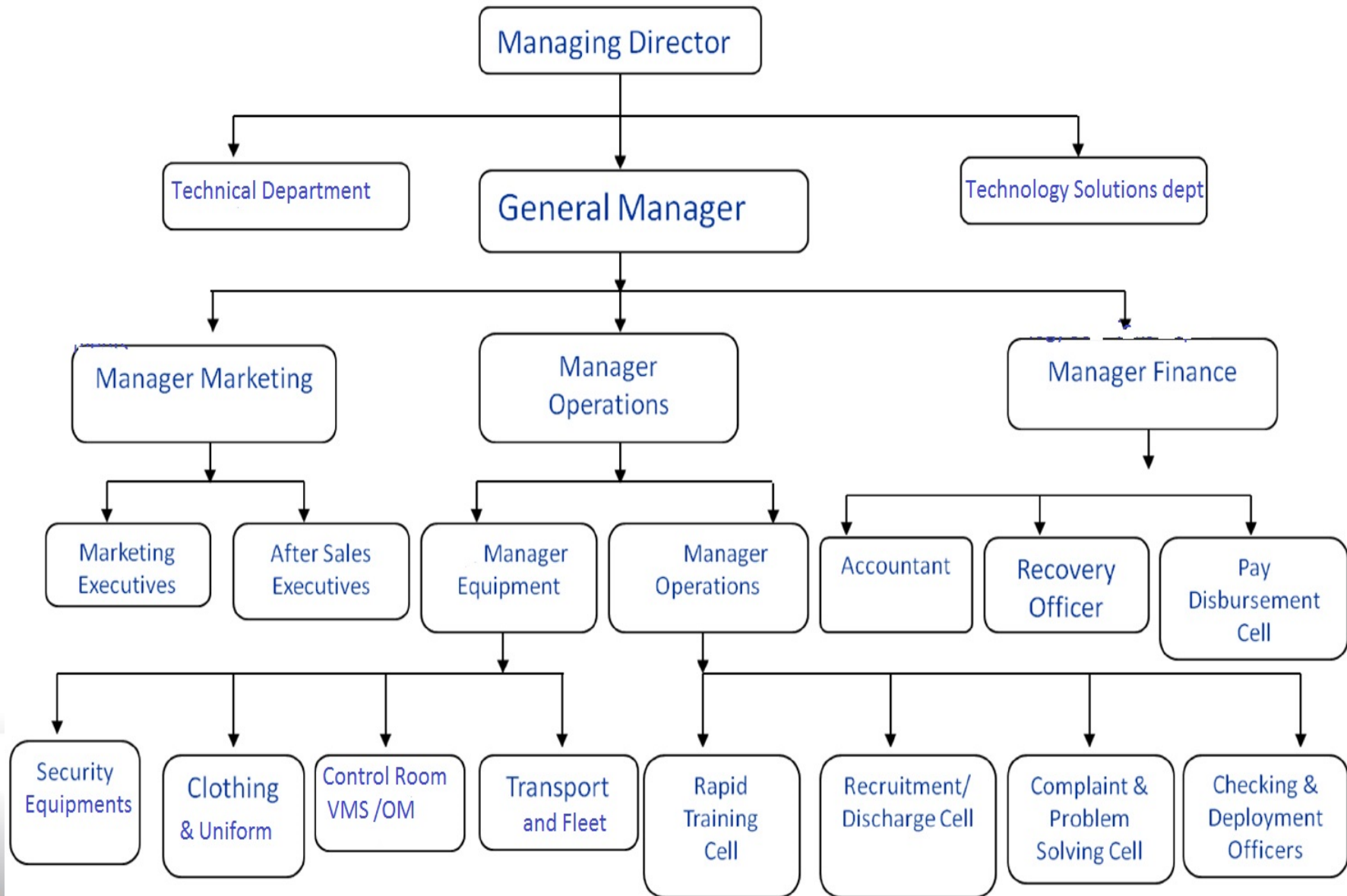
Phepha MV has been the leading counselor and installer since the commencement of activities in the field of Electric, Mechanic, Security and Communications systems in relevance with project design and implementation services; and it provides solutions through applying the latest state of the art technological equipments and services.

- Consultancy and project preparation services,**
- Engineering services,**
- Distribution and Representation services,**
- System & product procurement, and installation services,**
- After sales services: Technical support and maintenance,**





2. ORGANISATIONAL STRUCTURE





3. PHEPHA MV PRODUCTS AND SERVICES

Phepha MV has assisted many organisations to implement a variety of security solutions and certified training thereof, over the years. Our projects vary from small to medium sized and also larger complicated solutions. We stock best of breed high end products and offer a product management service second to none to ensure clients receive excellent service all the way.

World Class Service & Infrastructure

Continuous Research & Development ensures our customers receive proven solutions and products that meet our stringent application and operational standards.

Training in the Phepha MV Training Academy is geared to equip the candidate with the theoretical background as well as practical skills, from introductory to specialized level, to sell and maintain products across the spectrum.

Technical Back-up by qualified and experienced technical and IT personnel are ready to assist over the phone, or when necessary, on site. We also have a fully equipped workshop to cater for repairs on the full range

Security Warehouse will continue researching national and international manufacturers for the latest technology in security solutions to ensure our product matrix remains diverse and suitable to our client's specific needs.





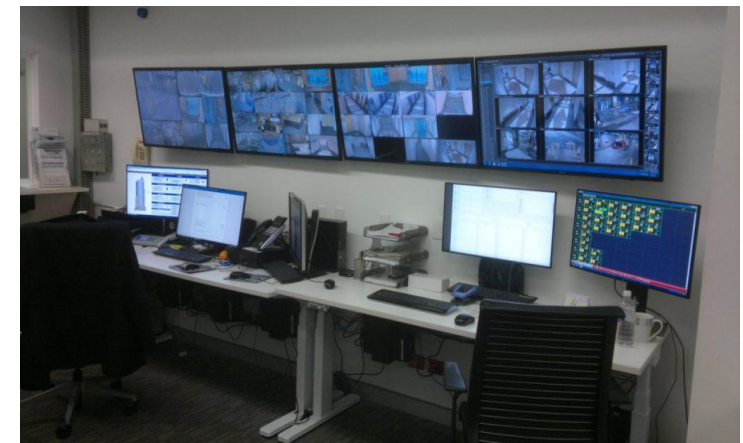
4. CLOSED CIRCUIT TV SYSTEMS



Phepha & Jireh designs Closed Circuit TV Systems, which have become an indispensable part of electronic security and automation systems over the last 10 years. Our company designs integrated systems for projects taking into account all the requirements envisaged by the customer. Large and small projects are designed by considering the operating scenarios provided by the customer and the risk analysis carried out by the engineers of our company to provide optimum equipment configuration.



Closed Circuit TV Systems installed for security purposes are normally used to manage the movement of people around the areas to be protected. The videos captured by these cameras are stored either digitally or conventionally. The digitally stored videos can be accessed from a remote location.





5. FIRE & GAS DETECTION SYSTEMS



Phepha MV installs fire alarm systems for homes and businesses using the most advanced and reliable technologies in the market. These systems are designed in such a way that they can be interfaced with other existing security detectors and automation systems of customers depending on their compatibility with the solution. Our company designs fire alarm solutions with facets for integration with other system to satisfy various needs. Several designs options suitable for projects with varying sizes, and compatible with both the operating scenarios provided by the customer and the risk analysis carried out by our engineers are first presented to the customer before the start of the project. Completed projects are delivered as turnkey solutions with an optimum equipment configuration.

Fire alarm systems have detectors that detect the onset of the fire and this makes early intervention possible. Based on the evacuation plans of the protected building, exit points like emergency exits, turnstiles, barriers at parking lots and other road barriers and hydraulic passage control posts are set loose automatically. The power supply to many locations may be offset to prevent the fire from expanding.





6. DRONE SECURITY & SURVEILLANCE



Unmanned aerial vehicles (UAVs) can be deployed in a multitude of 24/7 security and surveillance use-cases – the pace of which is determined by the intensity of customer pain points. Drone patrols now augment human guards and enable security agencies, risk managers, security directors, system integrators and other stakeholders to make faster, better decisions for protecting humans, assets and premises. Having an electronic eye-in-the-sky is as close as it gets to a silver bullet for detection, recognition and deterrence in the security context. The ability to schedule, repeat and monitor autonomous missions, so that drone fleets can augment human security guards and fixed cameras, is a powerful force multiplier.

Track & Follow

Phepha MV drones track intruders and follow them around in real-time to provide recorded data to security forces.

Hostile Situations

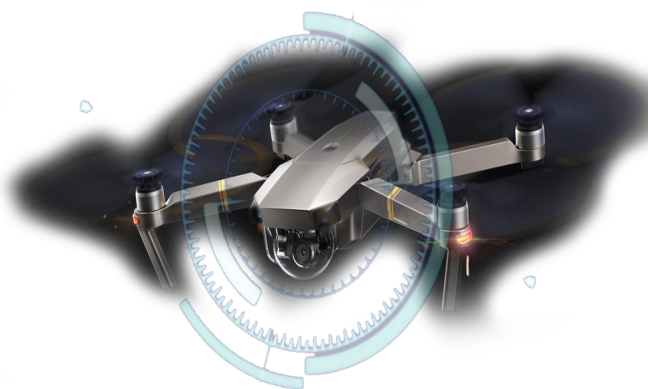
Phepha MV drones can be used in Anti-terror, anti-piracy, anti-criminal, and riot control scenarios.

Blind Spots

Phepha MV Drones delivers Comprehensive coverage to overcome blind spots and immobility of CCTVs

Hard-to-reach Locations

Phepha MV drones can reach Roof-tops, forestry plantation, narrow and confined spaces, high altitudes..





7. ACCESS CONTROL SYSTEMS

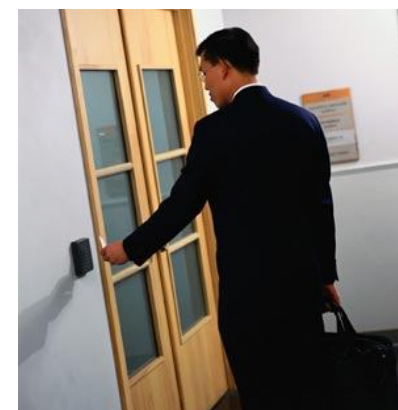
Honeywell



GUNNEBO
ENTRANCE CONTROL



Phepha MV provides Access Control Systems, which constitute an integral part of electronic security systems, with a wide range of products according to the operating scenarios provided by the customer and the risk analysis carried out by our engineers for the fulfillment of multiple purposes. These are put into operation and delivered as a turnkey optimum equipment configuration.





8. BIOMETRIC HAND & FINGERPRINT IDENTITY SYSTEMS

Honeywell

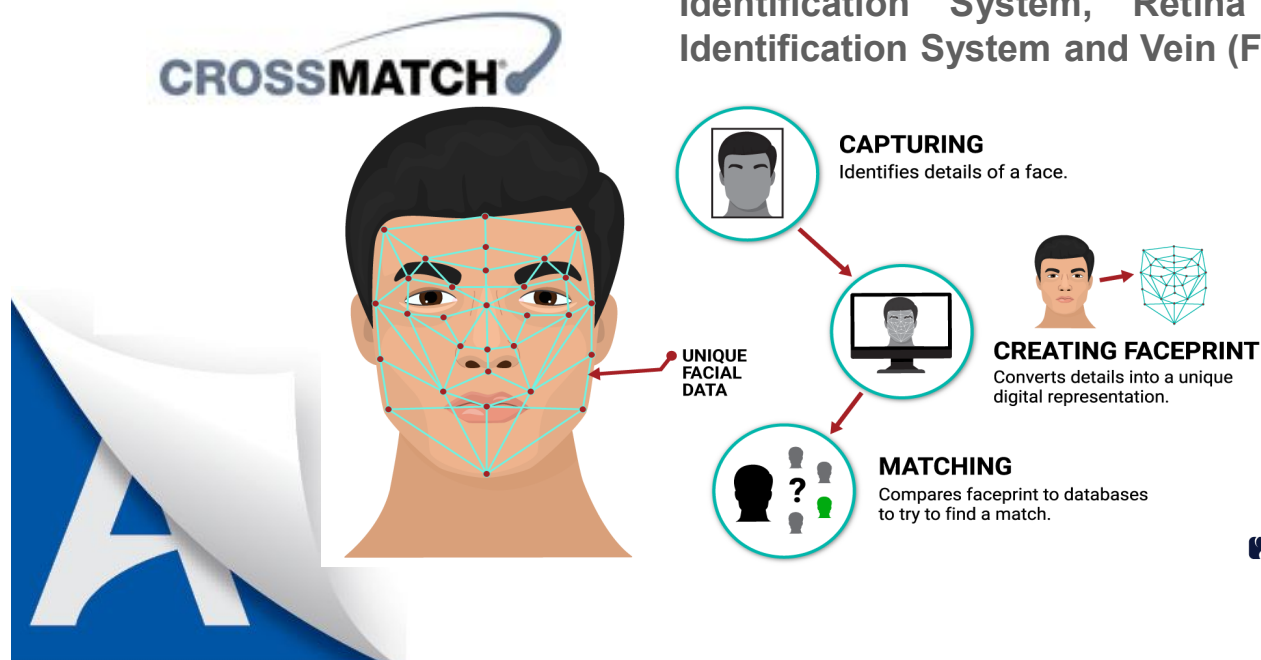
IDTECK

CROSSMATCH

Phepha MV has included biometric systems in its Access Control configurations four years ago. This provides solutions and makes it possible for the system to be integrated according to the scenarios provided by the customer. The systems are therefore installed based on the risk analysis carried out by our company to provide turnkey solutions with an optimum equipment configuration.

Biometric devices, used as stand-alone or integrated systems are designed by making use of the measurable unique physical human characteristics for identity verifications.

Biometric solutions that utilize measurable unique human body parts are as follows: **Finger Print Identification System, Face Recognition System, Iris Identification System, Retina Identification System, Hand Geometry Identification System and Vein (Fist) Identification System.**





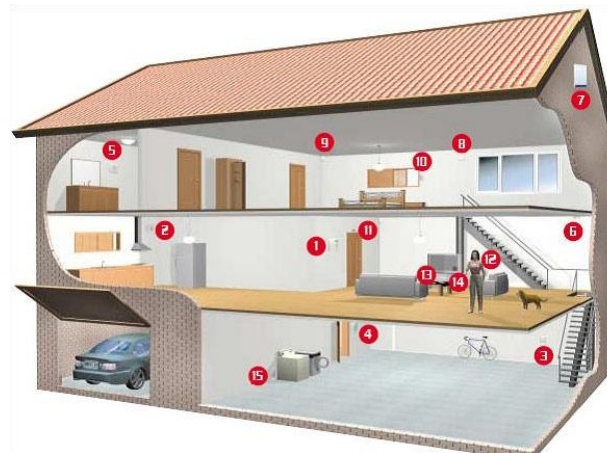
9. BURGLAR ALARM SYSTEMS

Honeywell

P **▲** **R** **▲** **D** **O** **X**[®]
S E C U R I T Y S Y S T E M S

Phepha MV installs reliable and advanced wireless and conventional technologies for the security of homes and offices, integrating them, upon request, with electronic detection and automation systems compatible with the solution.

Phepha MV designs various projects intended to satisfy all sorts of requirements and to be compatible with all sorts of solutions of different scales and designs depending on the operating scenario provided by the customer and the risk analysis carried out by our engineers, and makes turnkey deliveries with an optimum equipment configuration.





10.INTERCOM & VIDEO INTERCOM SYSTEMS

Multitek[®]

Phepha MV designs intercom systems with/without video for the entrance security of homes and offices and offers a wide range of products in this field from small home systems to large systems for residential estates such as condominiums according to the operating scenario provided by the customer and the risk analysis carried out by our engineers with an optimum equipment configuration.

COMMAX

Intercom systems with or without image transmission are installed in the most suitable places to ensure entrance security. They can be used as stand-alone or networked depending on the number of users and of entrances to be managed. Depending on the existing wirings of the building or by the request from the customer analog or digital intercom systems can be installed. Depending on installed configurations, the system permits host-visitor communication or communication between occupants of the same building or communication between a caretaker and visitors. In residential estates and condominiums, the system permits communication between the occupants of apartments and the security staff and visitors. Designs are normally carried out according to the chosen option and the budget of the customer.





11. PUBLIC ADDRESS SYSTEMS



A public address or PA system is a combination of a set of audio equipment that allows broadcasts over a designated area. Often found in schools, office buildings, Malls. PA systems can be used for announcements or emergency information and provide a simple way to get information out quickly. PA systems can be basic or advanced, and can be adapted to fit a variety of needs.



Basic PA systems are comprised of loudspeakers placed in convenient locations around the broadcasting area, an amplifier to increase the sound, and a mixer, which allows variation in sound levels. The user speaks into a microphone, and the sound is transmitted through connected cables to the area surrounding the speakers. Some systems also include microphones or intercoms near the speaker locations, allowing the listener to reply to the central location, although not to the entire system.





12. DATA & VOICE SYSTEMS



PHILIPS



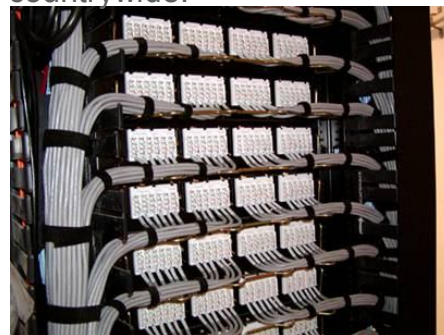
ALCATEL



Phepha MV, has made it amongst the leading project companies of our country regarding network with the important projects it completed with its expert staff on LAN (Local Area Network), WAN (Wide Area Network), and complex networks.

Phepha MV's service understanding is based on ensuring the continuance of data flow by means of designing complete solutions on the basis of customer requirements, developing efficient solution mechanisms against possible problems, and by showing zero tolerance against any problems that may occur in data flow. Accordingly, at the beginning of every project, Phepha MV's engineers having network setup expertise carry out detailed investigation operations, determine exactly the requests and requirements of the customer, meticulously monitor the implementation of the project, and deliver key-in-hand the network setup by taking into consideration the most current world standards. Phepha MV's main objectives in its project implementations beside maximum customer satisfaction is to provide continuous and efficient data management.

Jireh Technologies which provides investigation, project design, planning, and consultancy services concerning network setup, remote access connections (WAN), RF-ID, and security technologies such as Ethernet, Fast Ethernet, Gigabit, Fiber Optic, and Wireless implements the application-training and consultancy services in the projects it undertakes in wholeness, and due to its expert personnel in this area, it aims to provide service as the only firm for all your network solution needs. Many of the projects completed by APROTEK run without any problems in many public and private institutes nationwide.





13. VEHICLE AND TRANSPORT



The company maintains a large fleet of armed response vehicles for each area as well as supervisory and technical service units that are available for 24 hours site and guard inspections, armed response and reaction as well as general visits to all sites. Stand-by vehicles are available in case of any emergency.

13.1 RADIOS AND COMMUNICATION

All branches are fully equipped with state of the art communication facilities. All managers and supervisors are in 24-hour contact via cellphones and a dedicated gsm radio smart ptt. All guards are in 24-hour contact with control room operators and management are at all times aware of the situation on any client's premises. The control room has direct access to all management staff as well as company principals,





14. OUTDOOR PERIMETER INTRUSION DETECTION SYSTEMS

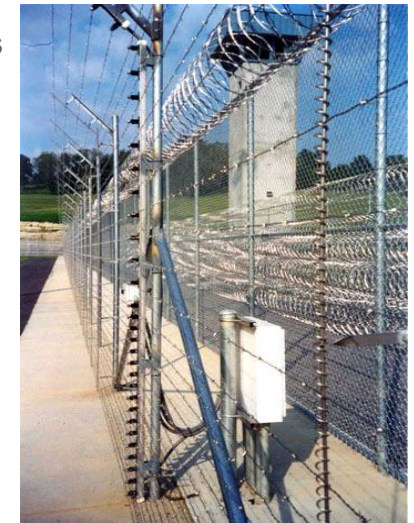
Honeywell

**Access
denied**

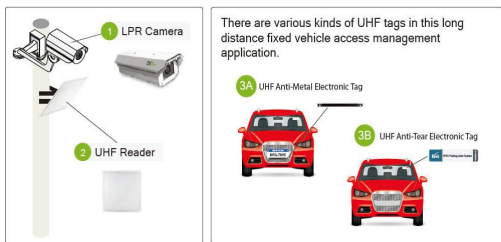
Phepha MV designs outdoor Perimeter Intrusion Detection Systems, the outer ring of an electronic security system, according to the operating scenario provided by the customer and the risk analysis carried out by the engineers of our company in order to deliver turnkey solutions. The systems for the perimeter intrusion detection systems, that part of the protected premises which is most exposed to the outside (gardens, walls, fences etc.), ensure security all along the line surrounding the premises. It is integrated with the system of other electronic security systems and ensures the monitoring and recording of a threat. The cameras automatically turn towards the site of the intrusion. The system archives the images and other data and alarms for eventual retrospective investigations separately for each operator.

At the stage of design of a perimeter intrusion detection system, we take into account the physical, topographical and structural properties of the area to be protected to choose one or several of the following solutions:

- Linear perimeter protection with double or four beams by means of external type active IR barrier sensors
- Protection of open areas by means of external type passive IR sensors
- Protection of large and open areas by means of microwave fence sensors
- Over-the-fence sensor system with Intrepid micro-point cable
- Volumetric sensor system with Intrepid micro-track cable
- Over-the-fence sensor system with microphone cable
- Over-the-fence sensor system with fiber optic cable



15. CAR PLATE RECOGNITION SYSTEMS



The Car Plate Recognition Systems consists of an image processing technology used to identify motor vehicles by their registration plates. It can be used for a number of purposes some of which are explained below:

Identification of stolen vehicles: An updated list of stolen motor vehicles issued by the security forces is loaded in the database of the GPRS and cameras installed on roads take photos of registration plates. Then, the images are compared with the content of the database and the results are notified to security forces in real time to allow them to catch the offenders. The system is able to identify motor vehicles going at 160 km/h in 30 milliseconds by means of cameras and to rapidly consult the database and to determine the speed of the motor vehicle in question, to identify international registration plates and to archive motor vehicles by their original colors. The system works under all weather conditions day and night.

Parking lot surveillance: This technology permits to load registration plates of motor vehicles authorized to enter the parking lot of the building in the database of the GPRS, which controls the gates, the automatic barriers, the bollards and road blockers in accordance with these data. The system transfers all information regarding the surveillance of the parking lot on a monitor and issues reports containing all of the statistical information on the motor vehicles. This system can be used in free parking lots available only to authorized people as well as in parking lots with a charge with a subscription system.

Control of motor vehicles at borders: Car plates and passport details of people crossing the border are registered in the database of the GPRS to ensure the control of crossings as well as the circulation of motor vehicles within the country. The system covers all of the border gates of the country and checks all border crossings. Eventual passages of criminals (terrorism, smuggling etc.) are monitored by means of the database of the security forces.

16. WALK THROUGH WEAPON & METAL DETECTORS



These detectors ensure the security level required for the building without hindering the circulation of people at entrances. They have 20 different high-speed operation programs, a precision of 200 degrees, a scanning of 33 different dotting areas and a detection technology with horizontal and vertical zones, and are able to carry out precise scanning jobs while permitting a passage intensity of 50-60 people per minute.



These devices have specially-designed circuits that prevent asking effect interference caused by interaction between two metals with inverse properties that annihilate the signals of each other and those are able to correctly detect all kinds of metal. They also record those passages that have created a high alarm level in a digital recording device by means of a camera and transfer them into a database.





17. X-RAY SECURITY SCREENING SYSTEMS



These are used at entrances of buildings for the passage control of parcels, luggage, bags and other similar objects to detect any weapons or explosives and to ensure the required security level for the building. The dimensions of the tunnel may vary between 82 cm x 65 cm and 80 cm x 100 cm depending on the intensity of the passage of luggage of the building. Thanks to the two-dimension detection system, all of the objects passing through the tunnel can be checked without any loss of image on the edges. They are able to see through 29-mm-thick steel.

The main property of the X-ray security screening systems is their capability of distinguishing colors and of isolating images by using organic/inorganic double-monitors to make the distinction between organic and inorganic matters with four colors to detect organic-based explosives. These detectors give a sound alarm upon detection of a suspicious piece of luggage and record the passages exhibiting a high alarm level in a digital recording device by means of a camera and transmit the data into a database.





18. GARAGE ENTRANCE CONTROL SYSTEMS

AMANO

Aprimatic

Nice

Phepha MV ensures integration of a wide range of products under the generic name of “Garage Entrance Control Systems”, including parking lot barriers, electromechanical or electronic road blockers, hydraulic bollards and road traps with all sorts of entrance control and automation systems for buildings/open areas, and designs them according to the operating scenario provided by the customer and the risk analysis carried out by our engineers and delivers turnkey solutions with an optimum equipment configuration.





19. SOLUTIONS AND TECHNOLOGIES

SOLUTION	PRODUCT TRAINING	TECHNICAL SUPPORT	FINANCE	PROJECT MANAGEMENT
<ul style="list-style-type: none"> ● In-house Design ● System Setup ● System Training 	<ul style="list-style-type: none"> ● Training Academy ● SITA Accredited ● Product Certification 	<ul style="list-style-type: none"> ● Counter Support ● Site Support ● Extended Warranties 	<ul style="list-style-type: none"> ● Product Finance ● Solution Finance ● Turnkey Finance 	<ul style="list-style-type: none"> ● Installation Management ● Training ● Commissioning



MARKET	VIDEO	VMS SYSTEMS	ACCESS CONTROL	FIRE & ALARM	ELECTRIC FENCING	GATE AUTOMATION
Higher-End Tier 1 <i>Larger Complex Projects</i>						
Mid-End Tier 2 <i>Standard Systems & Solutions</i>						
Lower-End Tier 3 <i>Commodities</i>						



20. SOME REFERENCES

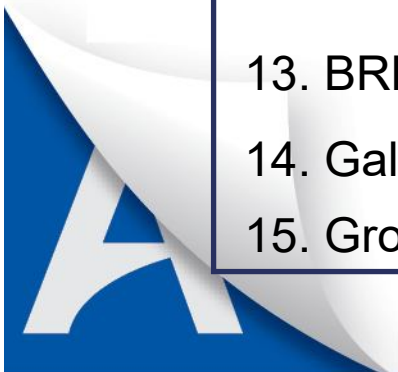
Name of Business	Duration	Contacts
1. Dept. of community safety & security & liaison 2. University of Mpumalanga Welispruit University of Mpumalanga Siyabuswa Mbombela Municipality Komatipoort Municipality AML Mining 7. Rand Water Water Affairs Standerton Grootdraai Dam Piet Retief Heyshope Dam Amerstadam Jerico Dam	9 years 10 years 10 years 9 years 10 years 10 years 5 years 10 years 1 year 1 year	J shabalala 071 202 2000 F Leutle 022 772 7720 F Leutle 022 772 7720 J Malope 022 772 7720 Thwala 017 720 1200 Paola 011 202 2000 T. Morare 071 200 2000 Alicia Hatting 017 201 2020 Chris 017 7201 2020 J Mahlaba 017 720 1200





SOME REFERENCES

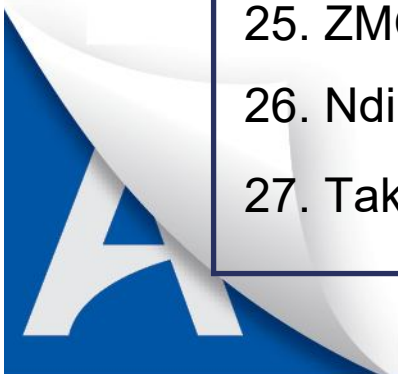
Name of Business	Duration	Contacts
Morgerzon dam	1 year	Chris 013 7201620
Westoe dam	1 Year	Marieta 017 7201600
Wentzel dam	8 Months	Nonthla 018 2949501
Jankempdorp workshop	18 Months	Motuti 013 2601380
Vlakfontein Canal	1 year	J Mahlaba 017 7201620
9. Lekwa Municipality	6 Years	A Sibeko 0712765680
10. Kusile A&M	3 Years	S Pretorious 013 7900678
11. BJ Foods	8 Years	Paul 013 7955073
12. Boxer Super Stores	3 Years	P Shongwe 0733624202
13. BRBF construction	3 Years	M De Kock 0721959140
14. Galewil Liquor	3 Years	D Smith 013 758 2282
15. Group 6	6 years	Andre 0828733729



SOME REFERENCES



Name of Business	Duration	Contacts
16. Durban Forensic Laboratory	9 Months	Lehotlo 012 3958613
17. Hitachi Africa	9 Years	M Samuels 013 7532067
18. Lebombo growers	10 Years	Eden 013 7938082
19. Oiltrek Mpumalanga Systems	3 Years	Ronel 013 7581075
20. Ramburg beef	6 Years	Clyde 0833041975
21. Pamel Electrical construction	8 Years	E Khoza 0825516784
22. Sintha Investments	5 Years	Gugu 0722772094
23. Ximungwe Spar	3 Years	Mashaba 0825597694
24. Solum Civil cc	3 Years	Anette 013 6560095
25. ZMG Water tech	6 Years	Brenda 0609608610
26. Ndindane School	4 Years	Thabethe 0824218991
27. Takitsi Investment	3 Years	C. Mahlalela 0764810496





SOME REFERENCES

Name of Business	Duration	Contacts
28. Sanbi	8 Years	Taki 0825445227
29. MTPA	3 Years	Marius 013 7595300
30. RCL (TSB)	3 Years	L Maseko 0312428600
31. Phamabanisa Primary School	1 Year	Ms sithole 0637459456
32. Royal parklands	8 Months	ED 0747141439
33. Kille Prince properties	3 years	Marius 0647573504
34. Safcol	3 Years	Mikateko 012 4366307



21. COMPANY INFORMATION



PARTNER COMPANY

Company Name: Phepha MV Security Services Pty Ltd

Company Reg : 2017/286721/07

PSIRA No : 1540299

CSD NO : MAAA0005172

Company Name: Jireh Technologies

Company Reg : 2006/028190/07

ICASA Licence

Infrastructure : 0350/IECNS/APR/09

Services : 0350/IECS/APR/09

22. CONTACT DETAILS

HEAD OFFICE

27 Station Street

Malelane 1320

Tel: 013 790 0222

Email: infosuperpro@telkomsa.net

BRANCHES

Mbombela Komatipoort Hazyview Pretoria

White River Kabokweni Standerton Secunda

Head Office:

T: 013 790 0222

F: 013 790 0129

E: infosuperpro@stelkomsa.net



Mbombela :013 741 3688

Komatipoort :013 793 7699

info@phephasecurity.co.za

CEO - Moses Magagula 082 452 9533