



---

---

The Collectors' Circle's  
Auction Of  
Historical Records

*Auction Closing Monday, November 15, 2010*

E-Mail: [shellacbids@hotmail.de](mailto:shellacbids@hotmail.de)

Phone: (+49) 211-572462

Axel Weggen  
Luegallee 18  
D-40545 Düsseldorf

Germany





Dear fellow collectors,

we are glad to present to you our newest auction list of historical recordings – we hope you will find some items you would like to grace your collection.

Please bid in integer € by mail or e-mail, as faxes are notoriously unreliable. For your own safety, when bidding please give the artists' name or record number – that way we can cross-check if we happen to notice an especially odd bid. But please double check your bids, for we cannot do this in every case. Auction numbers more or less follow the chronology in our list, but as the computer seems to have been temporarily confused, a few numbers are missing or out of sequence. Any number out of sequence is underlined to show that this is indeed the correct number. Theoretically bidding by phone may be possible, but please understand that we cannot spend hours scribbling down numbers and bids (especially without getting mixed up). Any bids received until midnight of closing day [15 November 2010] will be accepted. The records will be sold to the highest bidder. We reserve the right, however, to refuse bids under certain circumstances. Block bids such as "In case I win #14 I bid on #15" or topping bids like "I bid €5 more than whatever the highest bid will be" will not be accepted in any case. You may withdraw or change your bids until the auction closes.

In the Ebay age one almost gets used to bidding on items only to be dissatisfied when finding out later that "excellent condition" obviously meant "perfect for the garbage bin". We try hard to be accurate in our grading, which usually is by sight and in doubtful cases also by hearing. The following grades are used:

- 1-2 a record that is perfect in every way
- 2 slight cosmetic, inaudible blemishes
- 2-3 minor traces of use: few/very light rubs, scratches, greying
- 3 average condition: light rubbing, few scratches, some light greying
- 3-4 obviously well-played: rubbing, light scratches, some grey lines – sonic wear will occur
- 4 below average: significant greying or more pronounced damage in form of rubbing or scratches
- 4-5 surface is obviously damaged by rubbing and scratches or grey lines – significant sonic wear will occur
- 5 wear and damages of all sorts – not a pleasure to listen to
- 6 probably unplayable – only to fill a gap until a better copy turns up

To describe special defects, the following abbreviations may be found:

- CR crack
- EB edge bite (number of affected grooves)
- gen. generally
- HC haircrack (length in inch)
- IC/IPC internal crack / internal pressure crack
- NC needle cut
- ND needle dig
- NR needle run (Ladelläufer)
- TOL tear on label
- nap not affecting performance
- NOL needle run on label
- ntg not touching grooves
- OA original Album
- PC pressure crack
- scrs scratches
- sscrs surface scratches
- sm small
- ULC under label crack

We are mainly collectors of music, so any kind of label alterations such as a bit of writing, stickers, or small scratches, will not be mentioned unless it is significant damage of any sort. If very clean labels are important to you, please ask before bidding.



# 970

For some labels and characteristics frequently occurring the following abbreviations are used:

CRG	Concert Record „Gramophone“
CS	center start
DG	Disque „Gramophone“
DpG	Disque pour Gramophone
E	Electrola
G	Grammophon (electric)
G&T	Gramophone and Typewriter
GCR	Gramophone Concert Record
GMR	Gramophone Monarch Record
GR	„Grammophone Record“ (without dog)
H&D	hill & dale
HMV	His Master's Voice (british pressing)
KSG	Künstler-Schallplatte „Grammophon“
MRG	Monarch Record „Gramophone“
OB(T)	original box (and top)
P	Polydor
PD	Pre-Dog Gramophone Company
PL	paper label
POM	pressed from original master(s)
PoW	post war pressing
s/s	single-sided
SG	Schallplatte „Grammophon“
VdP	La Voce del Padrone
Vla	Victrola
Vr	Victor

Payment is expected within 14 days after you receive the invoice, on which payment details will be found. In case you win more than you expected, please contact us and we'll work out something.

We will not charge more for postage and packing than our actual costs are, but as DHL prices are considerable especially when shipping overseas (and cheaper private services only deliver nationwide), we are happy to combine shipping if you let us know about the details.

Please phone or write with any questions you might have, but please refrain from asking for current high bids on certain lots – we want everybody to have an equal chance, so we will reveal nothing before the auction is closed.

And now, have fun reading & bidding, and good luck to all of you!

Axel Weggen

Karsten Lehl



## Early records, rare labels

- 1 10" Anker 2056/2207. **NATIONAL-HAUS-ORCHESTER**. Hie guet Brandenburg (Henrion) / Tannhäuser-Marsch (Wagner). Earliest Anker-issue (1905), still with „National-Phonogramm“ written on labels. 3-4. MB 10
- 2 10" Apollo-Record 073/074. **MÜNCHNER SÄNGER-QUARTETT**. Der lustige Bua (Huber) / Ju heissa mei Deandl (Trutzlieder) Apollo-Record-sticker on Lyrophon label, recorded in München about 1905. Side 1 still announced. *Greyed, but plays astonishingly well, so graded 4*. MB 10
- 3 10" ac. Clarus-Record 937. **ORCHESTER**. Ausmarsch der Truppen zum Manöver / a) Weibi, Weibi b) Trink ma noch a Tröpfli. *IC, oth. 4*. MB 5
- 4 10" s/s Mauve Columbia 40102. **BENDIX, Martin und Paul (humorists)**. Beim Photographen (Duettscene). Very early issue, ca. spring 1903. 3-4. MB 15
- 5 10" s/s light-blue Columbia 40163. **KAPELLE DES INFANTERIE-REGIMENTS No. 24, BERLIN**. Der Zapfenstreich. with commandos by Gustav Schönwald. Very early issue, ca. spring 03. *ND affects announcement (needle might skip), oth. 4-5*. MB 10
- 6 10" Special label Columbia A 1685. **WILSON, Margaret Woodrow (ms)**. The Star Spangled Banner / BAND: Medley of patriotic airs. Souvenir record of the Panama Pacific International Exposition. 2. MB 10
- 7 11" Disques Gabriel Parès 2097<sup>2</sup>/98 <sup>3</sup>/<sub>4</sub>. **GARDE RÉPUBLICAINE**. FAUST: Ballet 2p. 2-3. MB 10
- 8 7" Purple Favorite 24502/03. **TÁROGATÓ-SZÓLÓ**. Ócskay brigadéros / JÁNOS VITÉZ: Szóló (Kacsóh). Recorded in Budapest 1905. 3. MB 20
- 9 10" Grey-Green Homophon 612/22. **KAISER FRANZ GARDE-GREN.-REG.No.2 BERLIN**. Carmen-Marsch (Bizet) / **HOMOPHON-ORCH.**: AIDA: Triumpfmarsch. Earliest form of issue (1905). 3. MB 10
- 10 10" Grey-Green Homophon 629/01. **KÖNIGIN ELISABETH GARDE-GREN.-RGT. 3 BERLIN**. LEICHTE CAVALLERIE: Ouverture / **HOMOPHON-ORCH.**: DICHTER UND BAUER: Ouverture (von Suppé). Recorded 24.2.1906. alm. 2. MB 10
- 11 10" ac. Saphir-Record 491/92. **ORCHESTER**. MARITANA: Finale 2<sup>nd</sup> p.(Wallace) / Der lustige Kupferschmied (Peter). Very rare label. *1" HC, oth. 4*. MB 10
- 12 10" Syrena-Grand 1401/02. **KAISER FRANZ JOSEPH GARDE-GRENADIER-REGT**. The Farmer Polka / The Postillon Polka. 3. MB 10

## Recitation / Speech

### ALLEN-PERKINS, Carlos (actor)

- 13 10" s/s Dark-Red Zonophone X-5-51028. APARECIDOS: Monólogo del Comendador (Arniches & Lucio). 2-3. MB 15

### ASLAN, Raoul (actor)

- 14 10" Austrian Columbia SV 120. a) Heidenröslein (Goethe) b) Berauschet euch (Baudelaire) / Prometheus (Goethe). *Short scr. Side 1, oth. 2*. MB 7

### BERNHARDT, Sarah (actress)

- 15 10" orig. G&T 31170. Le Lac (M. Bernhardt). 2-3. MB 200

### DE SANTA ANA, Rafael (actor & author)

1868-1922

- 16 10" G&T 61236. La Familia y el Inglés (de Santa Ana). 2-3. MB 18
- 17 10" G&T 61238. El hombre valeroso (De Santa Ana). 3. MB 15

### FRANZ JOSEF I., Kaiser und König

- 18 12" s/s Gold Lindström. Ansprache zugunsten des k.k. Österr. Militär-Witwen- und Waisenfonds. Original sleeve. Recorded in Schloß Schönbrunn, Wien, 14. 12. 1915. 2-3. MB 150

### GEORG, Graf zu Münster

- 19 12" ac. Parlophon P.1442. Hirschruf / WALDHORN-TRIO: Jagdsignale. *Many sscrs, but. Still 3*. MB 7

### GÜRTLER, Danny (author & actor)

1875-1917. One of the central figures of early German cabaret.

- 20 10" Homophon 1353/60. Der Steuermann / Wahrheit (Gürtler). Recorded 21.4. 1906. 3. MB 35
- 21 10" s/s Grey-Green Homophon 1332. Die Vogelhochzeit (Gürtler). Very rare original 1905 issue. 3-4. MB 25

### HITLER, Adolf

- 22 12" Die braune Platte 1. Appell an die Nation 2p. Labels completely scraped out (probably immediately after the collapse of the Nazi regime by the proud owner). *Very pimply pressing, many craters from open blisters, NR side 2, gen. 4*. MB 50

### KAINZ, Josef (actor)

- 23 10" SG 61576. Der G'tt und die Bajadere (Goethe) / HAMLET: Monolog (Shakespeare). 3. MB 20



### KLAUSEN, Henrik (actor)

1844-1907. Important Norwegian actor, creator of „Peer Gynt“.

24 10" G&T 81110. Latter. 4. MB 15

### LINDNER, Amanda (actress)

1868-1951. Member (among others) of the Hoftheater Meiningen and kgl. Schauspielhaus Berlin.

25 10" G&T 41806. MARIA STUART: Elisabeth-Monolog (Schiller). Very rare. 3-4. MB 75

26 12" G&T 041007. Die Wallfahrt nach Kevlaar (Heine). Extremely rare. *ULC (?)*, not through, oth. 3-4. MB 100

### MOISSI, Alexander (actor)

27 12" Polyphon 50088. a) Es war ein alter König b) Mein Kind, wir waren Kinder (Heine) / FAUST: Fausts Tod (Goethe). Scarce. 3/2-3. MB 30

28 12" Purple MRG 041018. FAUST: Monolog (Goethe). 4-5. MB 5

29 12" Purple SG 68029. RÄUBER: Traumerzählung (Schiller) / Novemberwind (Verhaeren). 3. MB 15

30 12" Red MRG 041016. An den Mond (Goethe). Still 3. MB 8

31 12" s/s Odeon JXX 81020. Belsazer (Heine). 4. MB 7

32 12" s/s Odeon JXX 81021. Erbkönig (Goethe). 2-3. MB 15

33 12" s/s Odeon JXX 81905. FAUST: Monolog (Goethe) 1<sup>st</sup> p. only. 3-4. MB 5

34 12" s/s Odeon JXX 81908. Erbkönig (Goethe). 3 or b. MB 15

35 12" s/s Purple SG 68032. Der G'tt und die Bajadere (Goethe). 3. MB 10

### MÜHLHOFER, Hans (recitator)

36 4-12" Vox \*05180-83. Hexenlied (von Schillings) 8p. w/ piano acc. by **Adolf Strasser**. Rare. *Short deep scr. at start side 2*, oth. 4 except Side 7 4-5. MB 18

### PLAUT, Joseph (actor, recitator and poet)

1879-1966. After a successful career as a tenor buffo (he sang at the Deutsche Oper Berlin until 1914) he more and more switched to the field of acting and recitation, often writing his own material. He left Germany for political reasons in 1936 and after successful tours of Switzerland and South Africa settled in London in 1937. After the war he guested at the Berlin Renaissance-Theater in 1949 and finally returned to Germany in 1951, where he continued a successful career in theatre. His last recordings singing humorous folk songs were made when he was over 80 years old.

37 12" Parlophon P.9034. Oberbootsmannsmaat Kröger (Plaut) / FLEDERMAUS: Szene des Gefängniswärters Frosch (Strauß). 3-4. MB 7

38 12" Parlophon P.9148. Als die Römer frech geworden / Die lippischen Schützen (Plaut). w/ piano acc. alm. 2. MB 10

39 12" ac. Parlophon P.2081. Militärischer Kirchgang / Instrukstunde (Plaut). alm. 2/still 3. MB 8

40 12" ac. Parlophon P.2236. Mobilmachung (Plaut) / Vogelhochzeit (Gürtler). w/ orch. acc. alm. 3/2-3. MB 8

### POPE PIUS XII.

41 10" Multicolor Pictorial Seal Pyral 50027/01. Prayer for the Holy Year / SINGERS OF THE HOLY CHAPEL: Chantez le Roi des Cieux (Noyon). Label side 1 has portrait of the pope in prayer, side 2 has design of St.-Peters-Square, papal seal and tiara. *Inherently noisy surfaces, gen. 3*. MB 40

### PROBST, Hermann

42 12" Homocord 4-8987. Des Deutschen Volkes Lied (Roellinghoff) / Die alte Couleur (Winkler). 2-3. MB 8

### RUIZ, Julio (author)

43 10" s/s Zonophone X-51002. Parlamento de los números del monologo Ruiz; dedicado al público de Madrid (Ruiz). alm. 2. MB 15

### SALZER, Marcell (recitator)

Marcell Salzer, born Moritz Salzmann (1873-1930) was an important Austrian recitator. He recorded for G&T (Berlin, 1903), Columbia (Berlin, 1904-05) and Odeon (Berlin, 1906).

44 10" s/s B&S Columbia 40568. Der Regenschirm (Rosegger). Virtually unknown on Columbia. *Dull surface, looks greyed, but plays without distortion from needle-wear, so called. 3*. MB 40

45 10¾" Odeon 50060/83. KARLCHENS AUFSÄTZE: „Göthe“ (de Grient) / Schöne Geschichte (Salzer). Rare. *Sscr.*, 3. MB 40

46 10¾" Odeon 50087/92. Abiturienten-Bummel / Begegnung im Theater (Rideamus). *Lt. NR side 2, oth. 3 or b*. MB 35

### SERRED, José (author)

47 10" s/s Dark-Red Zonophone X-5-51015. SERMON: Fragmento de la segunda parte (Serred). Narrow-grooved recording, cut 1904 in Valencia. alm. 2. MB 15

48 10" s/s Dark-Red Zonophone X-5-51019. SERMON: Fragmento del exordio (Serred). Narrow-grooved recording, cut 1904 in Valencia. *1/2" scr. at start, oth. alm. 2*. MB 12

### SILVA, Lopez (author)

49 10" PD 61246. El sueño de una noche de verano (Silva). alm. 2. MB 15



### SONNENTHAL, Adolf Ritter von (actor)

1834-1909. One of the most important actors of the Wiener Burgtheater in his time.

50 10" G&T 41379/80. NATHAN DER WEISE: Scene aus der Ringerzählung (Lessing) / WALLENSTEIN: Scene (Schiller). 3/3-4. MB 40

51 10" orig. G&T 41379. NATHAN DER WEISE: Scene aus der Ringerzählung (Lessing). alm. 3. MB 30

### SYLVA, Carmen (author)

1843-1916. Pseudonym of Elisabeth zu Wied, Queen of Roumania. Her pseudonymously published poetry was very popular at her time. Composer August Bungert (1845-1915) set many of her poems to music. In return, several singers who performed those songs were appointed the honorary title of kgl. Rumänischer Kammersänger (e.g. Carl Rost and Werner Alberti). She recorded four sides for G&T on 3 January 1903 in Bucharest, all of which are excessively rare.

52 10" orig. G&T 41307. a) Mittagläuten b) Kanaan (Sylva). *One pinpoint hole from open blister, oth.* 2-3. MB 2500

53 10" orig. G&T 41308. Communion (Sylva). 2-3. MB 2500

### VON HÖTZENDORF, Franz Freiherr Konrad

Generaloberst, Chef des Generalstabes (1852-1925)

54 12" s/s Green Lindström. Rede über den unauflöselichen Zusammenhalt aller Völker Österreich-Ungarns in unserer Armee u. Flotte als bleibende Frucht des Weltkrieges. Original sleeve. 3. MB 75

### VON KALCKSTEIN, L.

55 12" Vox \*05139. Ruf des Karpathen-Hirsches / Der Wolfs-Ruf. w/ **Szatur** (imitations). *Lt.scr. Side 2, oth.* 2-3. MB 15

### WIRTZ, Dr.

56. 12" Anker E 9923. Das Gewitter (Schwab) / Schwäbische Kunde (Uhland). Recorded in Köln, 1913 and most uncommon. 2-3. MB 35

### WOLKER, Ludwig

Generalpräses der katholischen Kirche in Deutschland.

57 10" Black Stimmen der Jugend T 5368. Ansprache (Wolker) 2p. Original sleeve with photo of Wolker. Recorded by Telefunken in Düsseldorf ca. 1934. *Inherent greying from overrecording (a better copy is unlikely to turn up).* 3-4. MB 15

58 10" Red Stimmen der Jugend B.N.T.5230. Uns ruft die Stunde (Wolker) 2p. w/ Singgemeinde kath. Jugend Düsseldorf, **Ingenhoven (org), Schmidt (tp)**, Ltg. **Lohmann & Diewald**. Recorded by Telefunken in Düsseldorf ca. 1934. 3. MB 15

### WÜLLNER, Ludwig (actor and recitator)

59 12" SG 65086. a) Der König in Thule, b) Der Fischer / a) Jägers Abendlied, b) Willkommen und Abschied, c) Mailed (Goethe). Rare. *Few sscr side 1, oth.* alm. 2. MB 35

### ZEPPELIN, Ferdinand Graf von

1838-1917.

60 12" s/s Black/White/Red Favorite Special-Record. Ein Wort des Grafen Zeppelin an das Deutsche Volk. Beautiful reverse with portrait of Graf Zeppelin. Recorded in Friedrichshafen (am Bodensee), 24.8.1908. Very rare and an important historical document. This is the almost unknown original pressing without a serial number; instead, the copies were numbered individually. As you can see, the company obviously expected sales in the 10000s ... *¾ scr. at start luckily gives only lt. Tics, some sscr, but not much needle-wear, gen.* alm. 3-4. MB 600



## Vocal

### ADER, Rose (s)

61 12" Parlophon P.9257. BOHÈME: Si, mi chiamano Mimi / Addio – donde lieta. 3. MB 8

### ALBERS, Henri (b)

62 14" H&D CS Pathé 338/638. FAUST: Scène de l'église / **DUPRÉ**: HUGUENOTS: Bénédiction des poignards. *Lt. greying at start side 2 gives no audible distortion, oth.* 2-3. MB 20

### ALBERTI, Werner (t)

63 10" Beka Grand 14282/89. FREISCHÜTZ: Durch die Wälder / MARTHA: Mag der Himmel euch vergeben. 3-4. MB 7

64 10" Favorite 1-15379/80. FREISCHÜTZ: Durch die Wälder/ FLIEGENDER HOLLÄNDER: Steuermannslied. still 3/3-4. MB 7

65 10" Favorite 1-15378/411. MEISTERSINGER: Preislied / LOHENGRIN: Gralserzählung. 3-4/3. MB 8

66 10¾" Odeon 34281/82. TROVATORE: Ständchen / Mein letzter Hauch noch sage dir. 4 or b. MB 7

67 10¾" Odeon 34283/96. POSTILLON DE LONJUMEAU: Postillonlied / MARTHA: Mag der Himmel Euch vergeben. 5. MB 4

68 10¾" Odeon 50152/61. TROVATORE: Ständchen / LOHENGRIN: Nun sei bedankt. 2-3/3-4. MB 12

### ALDA, Frances (s)

69 12" Red Vla 88399. CONTES D'HOFFMANN: Elle à fui (Offenbach). 2-3. MB 8

70 12" Red Vr 74385. MADELEINE: A perfect day (Herbert). Conducted by the composer. Creator. 2. MB 10

71 12" Red Vr 88213. OTELLO: Ave Maria. 2. MB 8

72 12" White-label vinyl Vr mx C 8506-I. TROVATORE: Ah, che la morta ognora. Cut December 1909, without chorus. Unpublished. 2. MB 40

**ALLEN, Perceval (s)**

- 73 10" G&T 3652. My mother bids me bind my hair (Haydn). *Destroyed grooves at start.* 5. MB 4  
74 10" G&T 3676. Because (d'Hardelot). 4. MB 5  
75 10" orig. G&T 3270x. Beauty's Eyes (Tosti). 1902 recording. *Surface depression at start, oth. a clean* 2-3. MB 20  
76 10" orig. G&T 3297. O dry those tears (del Riego). 1902 recording. 3 or b. MB 20

**ALMA, Marian (t)**

- 77 7" G&T 42481. POSTILLON DE LONJUMEAU: Postillonlied (Adam). 1901 recording. *1" patina is silent, oth.* 4. MB 25

**ALTGLASS, Max (t)**

- 78 12" ac. Odeon AA 57708/11. LUSTIGE WEIBER VON WINDSOR: Horch die Lerche / DRAGON DE VILLARS: O schweige still (Maillart). Rare. *Two inaud. patinas side 2, many sscr. gen.* 4. MB 18

**AMATO, Pasquale (b)**

- 79 10 3/4" Fonotipia 92505/06. TANNHÄUSER: Romanza / Lotta dei bardi. 3. MB 10

**ANDAY, Rosette (Piroska) (c)**

- 80 12" Fr. P 95194. Gretchen am Spinnrade / Des Mädchens Klage (Schubert). Piano acc. Franz Rupp. 2. MB 8

**ANDREJEW VON SKILONDZ, Adelaide (s)**

- 81 12" MRG 044216/17. RHEINGOLD: Finale 2p. w/ **ARNDT-OBBER, VON SCHEELE-MÜLLER, SOMMER & KOERFER.** 3 or b. MB 12  
82 12" SG 65405. HUGUENOTS: Pagen-Arie / ROBERT LE DIABLE: Gnaden-Arie (Meyerbeer). 2. MB 30

**ANDRÉSEN, Ivar (bs)**

- 83 12" Columbia Test WAX 4890/99. Im tiefen Keller (Fischer) / TANNHÄUSER: Ein furchtbares Verbrechen. Discography mentions take 3 issued for side 1, is this one unissued? *Side 2,* 3/4-5. MB 25  
84 12" Germ. Columbia DWX 1308. GÖTTERDÄMMERUNG: Hagens Wacht / MEISTERSINGER: Pogners Ansprache. 2-3/3. MB 6  
85 12" Germ. Columbia DWX 1610. TANNHÄUSER: Ein furchtbares Verbrechen / MACBETH: Etwas rascher, mein Junge (Verdi). alm. 2. MB 8

**ANGERER, Margit (s)**

- 86 12" G 66858. FAUST: Es ist schon spät 2p. w/ **PICCAVER.** 2. MB 8

**ANSELM, Giuseppe (t)**

- 87 10 3/4" Fonotipia 62162/63. CAVALLERIA RUSTICANA: Siciliana / WERTHER: Ah! Non mi ridestar. 4/4-5. MB 8

**ANSSEAU, Fernand (t)**

- 88 12" HMV DB 1364. FAUST: Ici je suis à ton service 2p. w/ **JOURNET.** 2. MB 7  
89 12" HMV DB 1263. SAMSON ET DALILA: Arrêtez, o mes frères! 2p. with choir. Uncommon. 2. MB 10

**ARANGI-LOMBARDI, Giuseppina (s)**

- 90 12" Columbia GQX 10735. NORMA: Casta Diva / **BACCALONI, CHENI, MANNARINI, VENTURINI:** SONNAMBULA: O fosco cielo. with choir. 2-3. MB 7

**ARANYI, Desider (t)**

- 91 7" G&T 2-42146. CAVALLERIA RUSTICANA: Turidus Abschied. Recorded in Praha, 1903. Still 3. MB 500

**ARENSEN, Heinz (t) (ARENSEN, André)**

Refer to Larry Holdridge's excellent information on this enigmatic singer in his 2008-09 catalogue, p.27.

- 92 12" MRG 042438/39. JUIVE: G'tt erleuchte meine Sinne / Recha als G'tt dich einst. Uncommon. 3. MB 25

**ARIMONDI, Vittorio (bs)**

- 93 12" s/s It. Columbia 30110. MARTHA: Brindisi. *A perfect.* 2. MB 20

**ARMSTER, Karl (b)**

- 94 10" ac. Odeon A 43370/74. Bonn (Bungert) / Ein rheinisches Mädchen (Hoppe). *IC is silent, oth.* 3-4. MB 5  
95 12" ac. Homocord B.8022. PAGLIACCI: Prolog / CONTESS D'HOFFMANN: Spiegellied (Offenbach). Underrated singer. 2-3/3. MB 8

**ASSZONYI, László (t)**

László Asszonyi (1882-1934) was a member of the Budapest „Királyszínház“.

- 96 10" SG 2-72281/82. Mi piroslik Ott a sikon távolban / Seprik a pápai utcát. - Nemzetőri indulóval. 3-4/4. MB 8

**BAKLANOFF, Georges (b)**

- 97 10" Odeon O-25814. EUGEN ONEGIN: Arie des Onegin 1. Akt / 3. Akt. Uncommon electric. 2-3. MB 20

**BALGUERIE, Suzanne (s)**

- 98 12" Fr. P 566104. TANNHÄUSER: Gebet / LOHENGRIN: Elsas Traum (in French). alm. 2. MB 15



## BARRIENTOS, Maria (s)

- 99 10¾" Fonotipia 39457/58. SONNAMBULA: Come per me sereno (Bellini) 2p. *Pressing fault at start side 2 aff. first few grooves, deep NR end of side 2 does not aff. Music, oth.* 2-3. MB 20
- 100 10¾" Fonotipia 39459/60. BARBIERE DI SIVIGLIA: Cavatina di Rosina 2p. 3/still 3. MB 12
- 101 10¾" Fonotipia 39503/04. DINORAH: Ombra leggera (Meyerbeer) 2p. 3 or b. MB 18
- 102 10¾" Fonotipia 39538/39. FRA DIAVOLO: Cavatina di Zerlina (Auber) 2p. 3-4. MB 10
- 103 12" Columbia Tricolor 48627. LUCIA DI LAMMERMOOR: Ardon gl'incensi. alm. 2. MB 7
- 104 12" Fr. Columbia D 11701. SEPT CHANSONS ESPAGNOLES: 1) El pano morino 2) Seguidilla murciana / 3) Asturiana (de Falla). **Piano acc. by the composer.** 2. MB 15
- 105 12" Fr. Columbia PFX 2. 1.) SEPT CHANSON POPULAIRES ESPAGNOLES: Polo 2.) L'AMOUR SORCIER: Chanson du feu follet / Soneto a Cordoba (de Falla). **Piano acc. by the composer.** Take 2 side 2. 2. MB 30
- 106 12" It. Columbia D 16381. RIGOLETTO: Tutte le feste / Cortigiani. w/ **STRACCIARI.** 2. MB 7

## BASSI, Amedeo (t)

- 107 10¾" Fonotipia 39726/27. Canzone Guerresca / FEDORA: Amor ti vieta (Giordano). **Both sides acc. by the composer.** Scarce. *Side 1 is a wreck, but side 2 is clean, so priced as s/s.* 5/2-3. MB 25

## BASTARD, Jacques (bs)

- 108 12" Fr. Columbia LFX 599. L'Absent /Nocturne (Fauré). Piano acc. **Joseph Benvenuti.** 1-2. MB 7

## BATHORI, Jane (ms)

- 109 12" Jap. Columbia JW 614. Trois Poèmes / Trois Mélodies (Milhaud). **Piano acc. by the composer.** Creator of both cycles (1916 and 1918 respectively). 2. MB 40

## BATTISTINI, Mattia (b)

- 110 12" Orange CRG [sic!] 052315. MARIA DI ROHAN: Bella e di sol vestita (Donizetti). 3. MB 15
- 111 12" s/s Orange GMR 054104. DON GIOVANNI: La ci darem la mano. w/ **CORSI.** 2. MB 10
- 112 12" s/s Orange Span. DG 052144. FAVORITE: A tanto amor (Donizetti). 3 or b. MB 8
- 113 12" White-label HMV Sample 2-052252. DON CARLO: Io morro. One side of top rare DB 737. 2. MB 25

## BAUGÉ, André (b)

- 114 10" DG K 862. CLOCHES DE CORNEVILLE: J'ai fait trois fois le tour du monde / C'est affreux, odieux (Planquette). *Sev. long scrs. luckily are silent side 1, oth.* 3. MB 4

## BAUMANN, Gertrud (s)

- 115 12" Musica Sacra B 4526. Ave Maria (Gau) / Laudate Dominum (Mozart). w/ **Eugen Sonntag (v).** alm. 2. MB 8

## BEAUJON, Marise (s)

- 116 12" Fr. Columbia D 15095. HÉRODIADE: Il est doux / Charme des jours passés (Massenet). Rarely recorded aria side 2. alm. 2. MB 8

## BELMAS, Xenia (s)

- 117 12" P 66636. MADAMA BUTTERFLY: Un bel di / MANON: Obbediam del core alla voce. Side 2 repeated 1928 in French on 66749. 2. MB 20
- 118 12" P 66748. Eastern romance (Rimsky-Korsakov) / SOROTCHINSKAYA MARKA: Banish all thoughts (Moussorgsky). Sung in Russian. 2. MB 16
- 119 12" Fr. P 66748. Eastern romance (Rimsky-Korsakov) / SOROTCHINSKAYA MARKA: Banish all thoughts (Moussorgsky). Sung in Russian. *Two small clusters of scrs side 1, oth. a clean* 2. MB 8
- 120 12" Fr. P 66631. BOHÈME: Mi chiamano Mimi / Donde lieta usci. alm. 2. MB 16
- 121 12" Fr. Ultraphone FP 110. ZOLOTTOJ PJETUZHOK: Hymne au soleil / Chant Hindou (Rimsky-Korssakov). Side 1 is take 30433-I, sung in French (despite label indication). alm. 2. MB 40

## BEN SEDIRA, Leila (s)

- 122 12" Fr. DG DB-5023. a) D'amor sull'ali (anon. 18<sup>th</sup> cent) b) La tua gradita fe / a) Preparati, o mio cor b) L'Emireno (A. Scarlatti). Harpsichord acc. **Claude Crussard & Ortmans-Bach (v), Blot (v) & Thibout (vc)** side 2. alm. 2. MB 10

## BENDER, Paul (bs)

- 123 12" SG 65576. Der Nöck (Loewe) 2p. *Lt. scr. Side 1, oth.* 2. MB 15

## BERGER, Erna (s)

- 124 12" P 57083. INES DE CASTRO: Scene und Arie (Weber) 2p. Uncommon. 2. MB 15

## BERGER, Rudolf (b, later t)

- 125 10¾" Odeon 34510/11. CARMEN: Torerolied / TANNHÄUSER: Lied an den Abendstern. 3-4/alm. 2. MB 25
- 126 10¾" Odeon 34572/73. DON GIOVANNI: Reich mir die Hand / LUCIA DI LAMMERMOOR: Duett. w/ **DIETRICH.** *a beautiful* 2-3/2. MB 40
- 128 12" G&T 042071. TANNHÄUSER: O du mein holder Abendstern. 4-5. MB 10
- 129 12" MRG 042470/71. WALKÜRE: Monolog Siegmunds / Siegmund heiß' ich. *Long lt. NR gives hardly any tics, oth.* alm. 2. MB 30



Paul Bender

### **BERGER, Rudolf (cont.)**

- 130 12" MRG 044261/62. PARSIFAL: Finale 2. Akt 2p. w/ **DENERA & HABICH**. Scarce. 2. MB 35  
131 12" Odeon 80062/63. LOHENGRIN: Gralserzählung / AIDA: Holde Aida. w/ Orch. cond. by **Eduard Künneke**. Still 3/3. MB 15  
132 12" Odeon AA 79055/57879. OTELLO: Othellos Tod / **WEIL**: PAGLIACCI: Prolog. 1" IC side 2 only is silent, oth. 2-3. MB 20

### **BERTHON, Mireille (s)**

- 133 12" Fr. DG W-973. BELLE HÉLÈNE: Invocation a Vénus / Amours divins (Offenbach). Side 1 is take 2 – the French Kelly notes take 1. An error, or were both takes released?. 2. MB 8

### **BERTRAM, Theodor (b)**

- 134 10" Arcona 32260/61. UNDINE: An des Rheines grünen Ufern / Nun ist's vollbracht (Gumbert/Lortzing). Janus masters. *Heavily greyed*. 4-5. MB 10

### **BETTENDORF, Emmy (s)**

- 135 12" ac. Parlophon P. 1360. PEER GYNT: Solvejgs Lied (Grieg) / MIGNON: Kennst du das Land. 2. MB 10  
136 12" ac. UK Parlophone E 10163. NOZZE DI FIGARO: Heil'ge Quelle / Nur zu flüchtig. 3/3 or b. MB 8

### **BIRRENKOVEN, WILLY (t)**

- 1165 12" PD 042157/58. TIEFLAND: Traumerzählung / Wolfserzählung (d'Albert). w/ Orch. d. Hamburger Stadttheaters, cond. by **Wilhelm Hamans**. Uncommon. 4. MB 10

### **BJÖRLING, Jussi (t)**

- 137 12" HMV DB 5787. a) Skogen sover (Alfven) b) Morgon (Eklöf) / An die Leyer (Schubert). Piano acc. **Harry Ebert**. 2-3/2. MB 8  
138 12" Scand. HMV DB 21311. BOHÈME: O Mimi / FORZA DEL DESTINO: Solenne in quest' ora. w/ **MERRILL**. 2. MB 7

### **BOCHNIČEK, Julius (t)**

Julius Bochniček (real name Laubner, 1871-1951) studied music in Prague and was active as a chorus master, pianist and organist. He sang at the theatres of Stettin, Prague and later in Budapest where these recordings were made. He recorded also for Odeon (Budapest 1905), among these recordings is a creator recording from Goldmarks „Götz von Berlichingen“.

- 139 10" Zonophone X-102621/22. PRODANÁ NEVĚSTA: Jak možná věřit / Utiš se (Smetana). with piano acc. Scarce. 3-4. MB 20

### **BOHNEN, Michael (bs-b)**

- 140 10" KSG 80077. OTELLO: Trinklied des Jago w/ choir / FAUST: Rondo. alm. 2/2-3. MB 12  
141 10" Telefunken B 662. FAUST: Rondo / Serenade. 3. MB 5  
142 12" Electrola EH 203. CASANOVA: Als ich zum ersten Mal dich sah w/ **STURM** / Im Rausch der Genüsse (Strauß; arr. Benatzky) w/ **AHLERS, FRIND, LIESKE, & STURM**. 3. MB 8  
143 12" KSG 78546. BOHÈME: Ach Geliebte / OTELLO: Schluß-Duett II. Akt w/ **PATTIERA**. 3/3-4. MB 7  
144 12" SG 66092. Aus der Jugendzeit (Radecke) / Im tiefen Keller (Fischer). 2. MB 15  
145 12" s/s Pink SG 76423. TOSCA: Spät in der Nacht ist's. 3-4. MB 5  
146 12" s/s Pink SG 76424. FAUST: Mephisto-Serenade. 3 or b. MB 6

### **BOLLMANN, Hans Heinz (t)**

- 147 12" Homocord 4-9082. CSÁRDÁSFÜRSTIN: Mädchen gibt es wunderfeine w/ **GEORG** / Heut' Nacht hab' ich geträumt von dir (Kálmán). 3. MB 8

### **BONCI, Alessandro (t)**

- 148 12" Fonotopia 74000/06. BOHÈME: Che gelida manina / FAUST: Salve, dimora. *Cluster of scrs side 1, oth.* 3-4/3. MB 10  
149 12" German Columbia LWX 8. BALLO IN MASCHERA: E scherzo od è folia w/ **RETTORE, RUBADI, BACCALONI & MENNI** / Di tu se fedele w/ **RETTORE**. alm. 2. MB 10

### **BONINSEGNA, Celestina (s)**

- 150 10" Red G&T 53372. MANON LESCAUT: In quelle trine morbide. Piano acc. Carlo Sabaino. Uncommon. *Bright label*. 3. MB 18  
151 12" Columbia Tricolor A 5199. ERNANI: Ernani involami / FORZA DEL DESTINO: Pace, pace. 2-3. MB 8  
152 12" HMV Hist. Cat. No.2 DB 493. FORZA DEL DESTINO: Pace, pace mio Dio / Madre, pietosa vergine. 2. MB 7  
153 12" Pink Columbia Grand Opera A 5197. NORMA: Casta diva / Ah! Bello a me ritorna. 2. MB 15  
154 12" Red G&T 053065. BALLO IN MASCHERA: Ma dall'arido stelo divulsa. *Greyed*. 4-5. MB 7  
155 12" Red G&T 053089. FORZA DEL DESTINO: Madre pietosa, vergine. w/ Cori della Scala. 2-3. MB 12  
156 12" Red GMR 053253. AIDA: Ritorna vincitor. 3-4. MB 5  
157 12" Red PD 053232. AIDA: O cieli azzurri. alm. 3. MB 12  
158 12" Silver Vla IRCC 15. FAUST: Tardi si fa w/ **DE LUCIA** / AIDA: Fuggiam w/ **VALLS**. 2. MB 15  
159 12" White Vla 92034. RUY BLAS: O dolce voluttà (Marchetti). w/ **COLAZZA**. alm. 2. MB 10

### **BORI, Lucrezia (s)**

- 160 12" Red Vr 6561. BOHÈME: Addio! / LOUISE: Depuis le jour (Charpentier). 2. MB 7

### **BORONAT, Olimpia (s)**

- 161 12" Red PD 053187. HUGUENOTS: La tenera parola (Meyerbeer). alm. 2. MB 75  
162 12" White HMV Sample mx 1515 c. MARTHA: Letzte Rose (in Italian). Unpublished. 2. MB 25

**BOSETTI, Hermine (s)**

- 163 10" PD/G&T 43785/86. ZAUBERFLÖTE: 1. Arie der Königin der Nacht / 2. Arie der Königin der Nacht. **4-5 (plays better)**. MB 7  
 164 10¾" Odeon X 52585/86. DON GIOVANNI: Reich' mir die Hand / NOZZE DI FIGARO: So lang' hab' ich geschmachtet.  
 w/ **FEINHALS. 3**. MB 20

**BÖTEL, Bernhard (t)**

- 165 12" Vox \*03304. WAFFENSCHMIED: War einst ein junger Springinsfeld / UNDINE: Das ist der Wein. Both sides with choir. **3/3-4**. MB 7

**BÖTEL, Heinrich (t)**

- 166 10" GCR 4-42152/356. Gute Nacht, du mein herziges Kind (Abt) / **KNOTE**: ALESSANDRO STRADELLA: Tief in den  
 Abruzzen (Flotow). **3-4/3**. MB 10

**BOUÉ, Géori (s)**

- 167 12" Multicol. Pictorial Le Lutrin 141/42. Ave Maria (Schubert; arr. Busser) / **BOURDIN**: Panis Angelicus (Franck). Side 1  
 w/ **Pasquier (v), Brizard (vc) & Steinmetz (org)**; side 2 w/ **Brizard (Vc) & Steinmetz (org)**. Beautiful images by  
 J.Baile both sides. *Inherent crackling pressing, gen.* **3 or b**. MB 40

**BOURDIN, Roger (b)**

- 168 12" Red Odeon XX 123663. Sérénade / Le vallon (Gounod). **alm. 2/2**. MB 8

**BRAUN, Oscar (t)**

- 169 10" s/s Zonophone X-24070. RASTELBINDER: Wenn zwei sich lieben (Lehár). w/ **WERBER**.  
**3**. MB 20

**BRONGEEST, Cornelis (b)**

- 170 11" H&D CS Pathé 15667/70. WAFFENSCHMIED: Gern gäb' ich Glanz und Reichtum hin /  
 ZAR UND ZIMMERMANN: Sonst spielt' ich (Lortzing). **3**. MB 10

**BRYN, Borghild (s)**

- 171 11" H&D CS Pathé 77198/201. TANNHÄUSER: Elisabeth's greeting /  
 FLIEGENDER HOLLÄNDER: Senta's ballad. **4**. MB 10

**BUDAI, Imre (b)**

Member of the Budapest Court Opera House.

- 172 10" SG 15-12877/78. Te szöke gyerek / NAGY ESZTENDŐ: Mintha piros rózsza eső hullana az égből (Zerkovitz). *Looks greyed,  
 but plays excellent (extremely forward recording), so called.* **3 or b**. MB 20  
 173 10" SG 3-14447/48. ZSUZSI KISSASSONY: Jaj Zsuzsikám / Csillag száll az egen (Kálmán). w/ **URAY. 4-5**. MB 5

**BURIAN, Emil (b)**

- 174 12" Cz. HMV AN 34. DALIBOR: Arie Vladislava (Smetana) / EUGEN ONEGIN: Arie Onégina. **2/2-3**. MB 8

**BURIAN, Karel (t) (BURRIAN, Carl)**

- 175 10" SG 61690. LOHENGRIN: Atmest du nicht / PAGLIACCI: Lache Bajazzo. **2-3**. MB 10  
 176 11" H&D CS Pathé 52142/47. WALKÜRE: Liebeslied / FREISCHÜTZ: Durch die Wälder. **2-3**. MB 25  
 177 12" G&T 042131/35. LOHENGRIN: Gralsersählung / **KRAUS**: WALKÜRE: Monolog Siegmunds. **3**. MB 10  
 178 12" SG 65131. EVANGELIMANN: Selig sind / MEISTERSINGER: Fanget an!. **alm. 2/3**. MB 8  
**1169** 14" H&D CS Pathé 52145/46. PAGLIACCI: Lache Bajazzo / WERTHER: Was bin ich aufgewacht? (Massenet). **2-3**. MB 35

**BURKRAF, Franz (t) (Purkrábek, František)**

- 179 10" Globos 1039/02. TROVATORE: Miserere / **ANON. TENOR**: MEISTERSINGER: Am stillen Herd. Wrong label side 2,  
 singer on side 1 is unnamed (mercifully). *Many sscr side 1, therefore.* **3-4/3**. MB 12

**CALVÉ, Emma (s)**

- 180 12" Yellow PD 034023. CARMEN: La bàs dans la montagne. w/ **DALMORÈS. 2-3**. MB 10

**CAMPANARI, Giuseppe (b)**

- 181 12" Columbia D 16270. CARMEN: Toreador-song / BARBIERE DI SIVIGLIA: Largo a factotum. **alm. 2**. MB 15

**CARRERA, Avelina (s)**

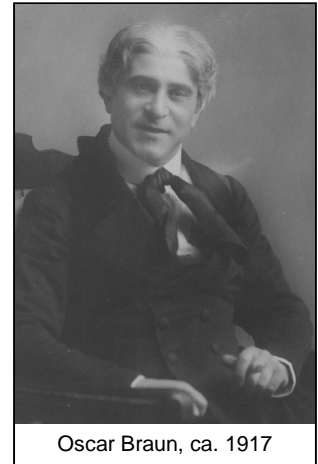
- 182 2-12" Yellow US vinyl sample pressing of Fonotipia Xph 3063 & 3115. CAVALLERIA RUSTICANA: Voi lo sapete /  
 SIBERIA: Nel suo amor (Giordano). Issued as Fonotipia 92169/68. **2**. MB 15

**CARUSO, Enrico (t)**

- 183 11" H&D CS Pathé 84004/06. TOSCA: E Lucevan le stelle / HUGUENOTS: Qui sotto il ciel. **2**. MB 80  
 184 12" HMV DB 639. El milagro de la Virgen (Chapi) / La partida (Alvarez). Side 2 is the piano-acc. version, never on Victor.  
 1¼" *lt. scr.* Side 2, *oth.* **2**. MB 10  
 185 12" HMV Hist. Cat. No.2 DB 137. LO SCHIAVO: Quando nascesti tu (Gomez) / BALLO IN MASCHERA: Ma se m'é forza perderti.  
**2**. MB 7

**CASTELLANO, Edoardo (t)**

- 186 12" Tricolor Columbia A 5009. Aprite la finestra (Cimmino) / **VINCENT**: Home, sweet home (Payne). **2/2-3**. MB 10



Oscar Braun, ca. 1917

### CASTELLAZZI-BOVY, Maria (s)

187 12" BAM 4. 1.) Motet à une voix (Legrenzi) 2.) Partiro / 3.) La tua pena 4.) Speranza (A. Scarlatti) . w/ **Thibout (vc) & Crussard (harpichord)**. 2. MB 10

### CERNAY, Germaine (ms)

188 12" Fr. Columbia LFX 316. LE ROI D'YS: De tous côtés / Marine (Lalo). Extremely rare electric. 2. MB 20

189 2-12" L'Oiseau-Lyre OL. 137-38. La Voyante (Sauguet) 4p. 2. MB 15

### CHALIAPIN, Feodor (bs)

190 12" Electrola DB 1437. FAUST: Rondo / Serenade. Side 2 is take 2 (only found on German and Australian pressings). 2. MB 7

191 12" HMV DB 1530. RUSLAN I LUDMILA: Rondo of Farlaf (Glinka) / RUSALKA: Aria of the miller (Dargomyzhsky). 2. MB 7

192 12" HMV DB 691. Eil Vanya (Russ. Folk Song) / ALEKO: The moon is high (Rakhmaninov). Side 1 unaccompanied. 2. MB 7

193 12" Opera Disc 76222. SONNAMBULA: Vi ravviso (Bellini). 2. MB 12

194 12" Opera Disc 76012. Song of the flea (Mussorgsky). 2. MB 12

195 12" Pink PD 022092. Song of the needy pilgrim (Manukin-Nevstruyev). Uncommon. 2. MB 25

196 12" Pink PD 022111. ZHIZN ZA TSARYA: They guess the truth (Glinka). alm. 2. MB 15

197 12" Pink PD 052222 . BARBIERE DI SIVIGLIA: Air de la calomnie. 3 or. b. MB 10

198 12" Pink Span. DG 022225. DEMON: Do not weep (Rubinstein). 2. MB 10

199 12" s/s Pink Span. DG 052356. SONNAMBULA: Vi ravviso (Bellini). *Uneven surface (slight warp), two NCs of no consequence, gen. 2-3*. MB 8

200 12" Span. DG DB 1104. SADKO: Song of the foreign guest (Rimsky-Korsakov) / KNYAZ IGOR: How are you, prince? (Borodin). alm. 2. MB 7

201 12" Span. DG DB 1352. Song of the Siberian prisoners /arr. Karategen) / She laughed (Lishin). 2/2-3. MB 7

### CHRISTOFF, Boris (bs)

202 12" HMV DB 21097. BORIS GODUNOV: In the town of Kazan / Death of Boris (Mussorgsky). alm. 2. MB 5

203 12" HMV DB 21127. SADKO: Song of the Viking guest (Rimsky-Korsakov) / KNYAZ IGOR: Air of Prince Galitzky (Borodin). 2. MB 5

### CIGNA, Gina (s)

204 12" Cetra BB 25029. ADRIANA LECOUVREUR: Io son sua per l'amore / GIOCONDA: L'amo come il fulgor del creato. w/ **ELMO**. 2. MB 7

205 12" P 67941. AIDA: Duetti di Aida e Amneris 2p. w/ **ELMO**. alm. 2. MB 7

### CLAUSSEN, Julia (ms)

206 12" Columbia Tricolor A 5732. Shadows (Jacobs-Bond) / RINALDO: Lascia ch'io pianga (Händel). Side 2 is take 1. *Damaged labels both sides, oth. 2*. MB 8

### CONRAD, Doda (bs)

207. 2-12" Fr. DG DB-5052-53. Vier ernste Gesänge (Brahms) 4p. Piano acc. **Erich Itor Kahn**. Sides 1-3 are 2, side 4 alm. 2. MB 15

### CONSTANTINO, Florencio (t)

1166 11" s/s H&D CS Pathé 12018. NO TE OLVIDO: Zortzico (Villar). From the tenor's first recording session (Barcelona 1903). *Looks greyed, but plays very well, gen. 3*. MB 20

208 12" Columbia A 5109. ELISIR D'AMORE: Una furtiva lagrima / L'AFRICAIN: O Paradiso. 2/2-3. MB 10

### CORPAIT, (t)

209 12" Odeon 73520/21. BOHÈME: Air de Rodolphe / **C.ALBANI**: CAVALLERIA RUSTICABA: Prélude et Sicilienne. 3. MB 12

### CORTIS, Antonio (t)

210 12" ac. Parlophon P.1581. MADAMA BUTTERFLY: Finale I.o atto / ANDREA CHÉNIER: Duetto finale w/ **FUMAGALLI-RIVA**. *1" scr. Side 1, oth. Still 3/2-3*. MB 7

### COUZINOU, Robert (b)

211 12" Fr. P 566023. GRISELIDIS: Oiseau, qui pars à tire d'aile (Massenet) / ROMÉO ET JULIETTE: Ballade de la reine Mab (Gounod). 2. MB 10

### CRABBÉ, Armand (b)

212 12" HMV DB 1305. ALEXANDER'S FEAST: Honour and arms (Händel) 2p. Sung in French. Side 1 is take 2 (both Kelly and RC discography give take 1). 2. MB 15

213 12" s/s White-label vinyl test pressing of Gram Co BV 63-II. Ay Zemba (Filiberto). Issued in Czechoslovakia only on HMV ER 313. 2. MB 12

214 12" Fr. DG DB-1043. HAMLET: Chanson Bacchique / BARBIERE DI SIVIGLIA: Air de Figaro. 2. MB 7

### CROIZA, Claire (ms)

215 12" Fr. Columbia D 15187. Invocation (Roussel) / Les fées (de Bréville). **Piano acc. by the respective composers**. *Lt. label crease (ULC?) is absolutely harmless and of no effect, oth. a beautiful 2/alm. 2*. MB 30

216 12" Fr. Columbia D 15187. Same as before, but a clean 2. MB 45

### CULP, Julia (c)

- 217 12" Anker E.9453. Auf Flügeln des Gesanges (Mendelssohn) / Ave Maria (Schubert). Piano acc. **Otto Bake**. *EB NTG, many sscr's, but no greying, generally.* 3-4. MB 8  
218 12" Anker E.9508. Du bist die Ruh' (Schubert) / **SENIUS**: Wo du hingehst (Ries) w/ **SENIUS-ERLER**. 2-3. MB 18  
219 12" Red SG 043274. Muß es eine Trennung geben? (Brahms). 2-3. MB 35

### DAFFETYE, Jeanne (s)

- 220 10" orig. G&T 33321. LAKMÉ: Air des Clochettes (Delibes). *Lt. NR at start gives hardly any tics, oth. a very clean* 2-3. MB 35

### DAL MONTE, Toti (s)

- 221 12" Fr. DG DB 1319. Ninna-nanna / Ridentor in fameggia (Bianchini). 2. MB 8  
222 12" It. VdP DB 5396. DON PASQUALE: Quel guardo il cavaliere / LODOLETTA: Flammen, perdonami (Mascagni). 2. MB 8

### D'ALVAREZ, Marguerite (c)

- 223 12" Vocalion A-0203. ELIJAH: O rest in the Lord / Silent night, holy night (Gruber). 2. MB 7

### D'ANDRADE, Francesco (b)

- 224 12" ac. Parlophon P.323. DON GIOVANNI: Brindisi / **BASSANI, GERRONI, LORENZO, OMODEL**: RIGOLETTO: Quartett. From Lyrophon masters. *1" patina is silent, oth.* 3. MB 18

### DANISE, Giuseppe (b)

- 225 12" Fr. P 595014. Core'ngrato (Cardillo) / Canta pe'me (di Capua). 2. MB 7

### DAVIES, Ben (t)

- 226 10" Flush G&T 2-2501. I'll sing thee songs of Araby (Clay). 4-5. MB 5  
227 10" orig. G&T 2-2782. The Sailor's Grave (Sullivan). Recorded 11 Nov. 1902. *Rough start, oth.* 3. MB 10

### DE HIDALGO, Elvira (s)

- 228 10¾" Fonotipia 92304/05. SONNAMBULA: Come per me sereno / Ah! Non credea mirarti (Bellini). 3-4/still 3. MB 15

### DE LUCIA, Fernando (t)

- 229 10" s/s Red Span. DG 2-52607. MANON: Il sogno. 3 or b. MB 25  
230 10¾" Fonotipia 92715/16. Fenesta che lucive (Bellini) / Canta pe' me (de Curtis). 2-3/3. MB 25  
231 12" HMV Hist. Cat. No.2 DB 388. BARBIERE DI SIVIGLIA: All'idea di quel metallo portentoso / Ah, quel colpo. w/ **A.PINI-CORSI & HUGUET** (side 2 only). 2. MB 8  
232 12" Silver Vr IRCC 104. SONNAMBULA: Son geloso w/ **GALVANY** / LOHENGRIN: Mio salvatore! w/ **HUGUET**. POM (PD 054215/175). 2. MB 15

### DE MURO, Bernardo (t)

- 233 12" HMV 052338. ANDREA CHÉNIER: Un di all'azzurro spazio. *NR at start, oth.* 2-3. MB 7  
234 12" It. VdP DB 553. ANDREA CHÉNIER: Sì, fui soldato / Un di all'azzurro spazio. alm. 2. MB 7  
235 12" Red HMV 052339. ISABEAU: La canzone del Falco (Mascagni). 3. MB 10  
236 12" Red MRG 052340. ISABEAU: E passera la viva creatura (Mascagni). 3-4. MB 10  
237 12" s/s Red Span. DG 2-052123. OTELLO: Ora e per sempre, addio. 3-4. MB 5  
238 3-12" Red MRG 054346, 052341 & 054347. ISABEAU: Dormivi? Sognavo! (Mascagni) 3p. w/ **BORTOLOMASI**. *Two NRs at start side 1, oth.* 3/4. MB 20

### DEL CAMPO, Sofia (s)

- 239 12" Red Vla 9483. Luz mala ( Fabini) / El Segreto (Rengifo). 2-3/2. MB 8

### DELCROIX, A. (t)

- 240 10¾" Odeon 33667/68. CARMEN: Duo de duel / MUETTE DE PORTICI: Amour sacré (Auber) w/ **A.BOYER**. 3-4. MB 10  
241 7" Black. Zon-O-Phone 1152. TROVATORE: Misérere. 4. MB 18

### DEMUTH, Leopold (b)

- 242 10" G&T 3-42499. ERNANI: Ha, großer Kaiser (Verdi) w/ Chor der k.k.Hofoper Wien. 4. MB 7  
243 10" GCR 3-42345/73. AIDA: Ich habe gekämpft / UNDINE: Nun ist's vollbracht. Still 3/3. MB 5  
244 10" GCR 4-42202/03. TIEFLAND: Hüll' in die Mantille / Ich denke oft ans blaue Meer (Weingartner). Still 3. MB 7  
245 10" PD 4-42035/36. TROMPETER VON SÄCKINGEN: Ihr heißet mich willkommen (Neßler) / **WEIDEMANN**: WAFFENSCHMIED: Du läßt mich kalt von hinnen scheiden (Lortzing). 2-3. MB 15  
246 10" SG 4-42291/92. TANNHÄUSER: Dir hohe Liebe / LOHENGRIN: Telramunds Klage. 4. MB 5

### DENERA, Erna (s)

- 247 12" Parlophon P.341/47. CAVALLERIA RUSTICANA: Romanze / WALKÜRE: Du bist der Lenz. Alm.2. MB 8  
248 12" Parlophon P.373. CARMEN: Duett Micaela-Don José 2p. w/ **VOGELSTROM**. 3. MB 8  
249 12" Parlophon P.520/22. AIDA: Schlußduett 2p. w/ **VOGELSTROM**. 3. MB 10



Erna Denera

**DENYA, Marcelle (s)**

250 12" Fr. Columbia D 15077. NOZZE DI FIGARO: Mon coeur soupire / Air de Cherubin. 2. MB 8

**DESSA, Bruno (t)**

251 10" ac. Mill-Opera 2203. RIGOLETTO: Ach wie so trügerisch / **PLETSCHER**: Verlorenes Glück (Sprowacker).  
Dacapo-masters, singers names not given on labels. 3-4. MB 5

**DESSOIR, Susanne (s)**

252 10" SG 20059. Ave Maria (Tosti) / Wiegenlied (Van Rennes).  $\frac{1}{2}$ " NR gives several tics side 2, oth. a clean alm. 2. MB 25

**DESTINN, Emmy (s)**

253 10 $\frac{3}{4}$ " Odeon 50230/31. CARMEN: Habanera / Seguedilla. *Rim-chip NTG side 1, oth. a clean* 2-3. MB 7

254 12" HMV Hist. Cat. DB 399. FREISCHÜTZ: Wie nahte mir der Schlummer / Und ob die Wolke. 2. MB 8

255 12" s/s Fr. DpG 2-054019. Mira la bianca luna (Rossini). w/ **McCORMACK**. 2. MB 12

256 12" s/s White-label Vla 88520. PIKOVAYA DAMA: Es dämmert. w. **DUCHÊNE**. 2. MB 12

257 12" Silver Vr IRCC 65. RUSALKA: Lieblicher Mond (Dvořák) / Die Bekehrte (Stange). 1-2. MB 15

258 10 $\frac{3}{4}$ " Odeon 29071/72. Už mou milou / Měla jsem chlapce (Czech Folk Songs). Recorded 1905. Alm.2/3 or b. MB 15

1167 12" Odeon 76013/15. AFRICAINE: Schlummerlied der Selika / NOZZE DI FIGARO: Nur zu flüchtig. Rare and beautiful Destinn.  
*Some (heat?) marks side 1, plays as* 3/alm. 2. MB 15

**DEVRIËS, David (t)**

259 12" Odeon XX 123552. FAUST: Salut, demeure / MIGNON: Elle ne croyait pas. 2-3. MB 25

**DIETRICH, Marie (s)**

260 10" orig. G&T 43453. Thema und Variationen (Proch). Remarkable technical ability. Rare. *Greyed.*, 4-5. MB 10

261 12" G&T 043072. MIGNON: Ihr Freunde kommt w/ Chor der kgl. Hofoper / **RUNGE**: CARMEN: Duett Michaela-Don José  
w/ **JÖRN**. 3-4. MB 8

**DOMGRAF-FASSBAENDER, Willi (b)**

262 10" Cz. HMV AM 4144. Auf der Lüneburger Heide / Wenn der Birnbaum blüht (Blume). Both sides with choir. 3. MB 4

263 12" UK Parlophone E 10668. Die beiden Grenadiere (Schumann) / Die Uhr (Loewe). 3-4/3. MB 4

**DUFRAÑNE, Hector (b)**

264 12" Columbia Tricolor A 5444. LAKMÉ: Lakmé, ton doux regard / CONTES D'HOFFMANN: Scintille, diamant (Offenbach).  
2. MB 8

**DUHAN, Hans (b)**

265 12" ac. Odeon Rxx 80125/86. TANNHÄUSER: Blick' ich umher / Lied an den Abendstern. Uncommon. 4. MB 6

266 12" ac. Odeon Rxx 80185/87. Die Uhr (Loewe) / Die beiden Grenadiere (Schumann). Piano acc. **Victor Boschetti**. 3/still 3. MB 7

**DUTREIX, Maurice (t)**

267 12" Vocalion A-0174. HÉRODIADE: Air de Jean (Massenet) / Explanatory talk. Piano acc. by **Noël Gallon**. 4. MB 5

**DUTREUX, Paul (b)**

268 7" Black. Zon-O-Phone 1234. MASCOTTE: Air de Saltarello (Audran). 4-5. MB 15

**DUX, Claire (s)**

269 12" Blue SG 65557. HOLLANDWEIBCHEN: Brautlied / Wenn der Dudelsack erklingt (Kálmán) w/ **KUTZNER**. Uncommon.  
*IC is silent, oth.* 2-3/3. MB 15

270 12" Red SG 72897. Ave Maria (Bach-Gounod) / Élégie (Massenet). w/ **Földesy (vc)**, **Hopf-Geidel (harp; side 1 only)** &  
**Seidler-Winkler (org)**. *Rim-chip NTG side 1, oth.* 3. MB 8

**EAMES, Emma (s)**

271 12" Vr 88011. ROMÉO ET JULIETTE: Valse. 2. MB 7

**EDELMANN, Otto (bs)**

272 12" Austrian Columbia LVX 186. MEISTERSINGER: Ein Kind ward hier geboren / Quintett w/ **SCHWARZKOPF, HOPF, UNGER**  
& **MALANIUK**. Orch. d. Bayreuther Festspiele, cond. by **von Karajan**. 2-3. MB 7

**ENDRÈZE, Arthur (b)**

Chicago-born Arthur Krackman was in the inter-war years the impersonation of French style and elegance, for a non-native a rarely  
achieved osmosis.

273 12" Odeon 123021. ROI DE LAHORE: Promesse de mon avenir (Massenet) / TRAVIATA: Air de Germont. alm. 2. MB 7

274 12" Pathé PDT 51. HAMLET: Monolog / FAUST: Ecoute-moi bien, Marguerite. 2. MB 12

275 12" US. Decca G-25893. Nocturne / La procession (Franck). 2. MB 7

**ESCALAÏS, Léon (t)**

1161 10 $\frac{3}{4}$ " Fonotipia 39370/37041. HUGUENOTS: Settimino w/ **MAGINI-COLLETTI, CORRADETTI, LUPPI, SALA, ALGOS &**  
**MASOTTI / CORISTI DEL TEATRO ALLA SCALA**: FAUST: O gloria cinta d'allor. *Open blister at start side 1, oth.* 2-3/2. MB 150

**EYSSLER, Pál (b)**

276 10" Edison Bell Eternola H 1021. BALLO IN MASCHERA: Renato áriája 2p.  
with piano acc. 2. MB 15

**FANELLI, Maria Luisa (s)**

277 12" HMV C 2347. GIOCONDA: Suicidio! / ANDREA CHENIER: La mamma morta.  
Scarce. 2. MB 15

**FEINHALS, Fritz (b)**

278 12" MRG 042219/20. WALKÜRE: Wotans Abschied 2p. alm. 2. MB 10  
279 12" MRG 042311/044185. FLIEGENDER HOLLÄNDER: Wie aus der Ferne 2p.  
w/ **KURT. 3**. MB 8  
280 12" SG 042217/18. MEISTERSINGER: Fliedermonolog / Schlußansprache. 3. MB 8  
281 12" SG 042321/22. PAGLIACCI: Prolog / L'AFRICAINNE: Dir, o Königin. 4/3-4. MB 4  
282 12" ac. Odeon 76007/08. MEISTERSINGER: Schlußansprache / PAGLIACCI: Prolog. Among the first 12" Odeons ever issued.  
*Inherent (heat?) marks side 2 (visible in all copies I have seen), oth. 3/3-4*. MB 8

**FELSER, Frieda (s)**

283 10" Zonophone X-23112/23. MIGNON: Kennst du das Land / **NEISCH**: Schwanenlied (Hartmann). 3. MB 25

**FINESCHI, Onelia (s)**

284 12" Cetra BB 25210. BOHEME: Sono andati / O soave fanciulla. w/ **F. ALBANESE. 2**. MB 7

**FISCHER, Albert (bs-b)**

285 10" Odeon O-26530. DEUTSCHES REQUIEM: Herr, Herr lehre doch mich (Brahms) 2p. w/ choir. 3. MB 10

**FISCHER, Lore (c)**

286 10" Red. DG DA-4934. SPANISCHES LIEDERBUCH: Bedeckt mich mit Blumen / Sie blasen zum Abmarsch (Wolf). Piano acc.  
**Hermann Reutter. 2-3**. MB 10

**FLEISCHER, Editha (s)**

1168 12" Polyphon 50010. MIGNON: Polonaise / HUGUENOTS: Pagen-Arie (Meyerbeer). Scarce. *Two short Nrs at start side 2, therefore 3/3-4*. MB 25

**FLETA, Miguel (t)**

287 10" s/s Red Span. DG 7-62057. Mi tierra (Muzas). 3. MB 8

**FLORIANSKI, Vladislav (t)**

288 10" B&S Columbia 41189. Prstýnek (Czech Folk Song). *Heavily greyed. 4-5*. MB 10

**FODOR, János (bs-b)**

289 10" Odeon A 198403. Ideale (Tosti) / GARABONCIÁS: Deres már a határ (Lehár). Orch cond. by **Frigyes Friedl. 2-3/3 or b**. MB 12

**FORMICHI, Cesare (b)**

290 12" Columbia LX 236. RIGOLETTO: Cortigiani / Pari siamo. 2. MB 7

**FORNIA, Rita (ms)**

291 12" White Vla 74227. Der Spielmann (Hildach). Rare. 2. MB 15

**FORST, Grete (s)**

292 10" CRG 2-43382/83. ENTFÜHRUNG: Welche Wonne / **KITTEL**: SAMSON ET DALILA: Die Sonne, sie lachte. 3 or b. MB 25

**FRANCI, Benvenuto (b)**

293 12" It. VdP DB 1138. ERNANI: Gran Dio! / Oh sommo Carlo. w/ PALET, D'URBINO & choir. Side 1 is mx CF 1526-2. 2. MB 8  
294 12" It. VdP DB 1320. AIDA: Quest'assisa / BALLO IN MASCHERA: Eri tu. Side 1 w/ **MASINI, LUCINI, LOIS** & choir. 2. MB 7  
295 12" It. VdP DB 1393. GUILLAUME TELL: Resta immobile / L'AFRICAINNE: E averla tanto amata. 2. MB 8

**FRANCILLO-KAUFFMANN, Hedwig (s)**

296 12" ac. Parlophon P. 234. TROVATORE: Cavatine 2p. *Uncommon. 2-3*. MB 18  
297 12" Parlophon P. 9100. Barbiere di Siviglia: Una voce poco fà 2p. Rare electric. 2. MB 40

**FRASCANI, Nini (c)**

298 10" Columbia D 5505. CARMEN: Habanera / FAVORITE: O mio Fernando. 4-5. MB 4  
299 10" Columbia-Rena Opera Record D 5504. CARMEN: Scena della carte / Seguedilla. 3 or b. MB 10

**FREMSTAD, Olive (s)**

300 12" Columbia Tricolor A 5281. TANNHÄUSER: Dich teure Halle / LOHENGRIN: Einsam in trüben Tagen. 2. MB 8

**FRICK, Gottlob (bs)**

301 12" DGG 68151. KLUGE: O hätt' ich meiner Tochter nur geglaubt / **FEHENBERGER, LÖBEL, BÖHME**: Als die Treue ward geboren (Orff) . 2. MB 7



### FÜGEL, Alfons (t)

302 12" G 67770. BOHÈME: Wie eiskalt / TOSCA: Wie sich die Bilder gleichen. 2. MB 7

### FUMAGALLI-RIVA, Zita (s)

303 12" ac. Parlophon P. 1602. FALSTAFF: Sul fil d'un soffio etesio (Verdi) / ANDREA CHÉNIER: Duetto finale (Giordano) w/ **CORTIS**. *Tiny pressing-fault side 1, oth. a beautiful.* 2. MB 15

### GADSKI, Johanna (s)

304 12" Red Vla 89068. AIDA: Su dunque! . w/ AMATO. 3. MB 7

305 12" Red Vr 88038. LOHENGRIN: Elsas Traum. 2. MB 7

### GAILHARD, Pedro (bs)

306 12" SFG AFG 14. FAUST: a) Sérénade (in Fr) b) Sérénade (in It) / a) **FUGÈRE**: JOCONDE: Romance (Isouard) b) **MAUREL**: FALSTAFF: Quand'ero paggio (in It) c) FALSTAFF: Quand j'étais page (in Fr). High quality RR from 1948 to mark the centenary of these three French singers. 1-2. MB 15

### GALL, Yvonne (s)

307 12" Pathé Art X.7169. MIARKA: L'eau qui court (Georges) / LAKMÉ: Pourquoi dans les grands bois. Creator of the revised 3-act version of „Miarka“, Paris Opera, 16. 1. 1925. 2. MB 15

308 12" Pathé X.90.072. THAÏS: Duo de l'oasis (Massenet) 2p. w/ **ENDRÈZE**. 2. MB 12

### GALLI-CURCI, Amelita (s)

309 12" HMV DB 813. TROVATORE: Come d'aurato sogno / D'amor sull'ali rosee. 2. MB 8

310 12" White HMV VB 5. SEMIRAMIDE: Bel raggio (Rossini) / SONNAMBULA: Ah! non giunge (Bellini). Side 2 first and only edition. 2. MB 8

311 12" White vinyl sample pressing of Vr mx CVE 19149-3. Clari (home, sweet home). Take unnoted in the RC-Discography. 2. MB 15

### GALVANY, Maria (s)

312 10" Red G&T 53484. BARBIERE DI SIVIGLIA: Una voce poco fa. 3 or b. MB 12

313 10" Red PD 53526. Variationen (Proch). 3 or b. MB 25

314 12" Red GMR 053165. L'Incantatrice (Arditi). 2. MB 10

315 12" Red PD 053165. L'Incantatrice (Arditi). *A beautiful* 2. Rare in that condition. MB15

316 12" Red PD 053180. DINORAH: Ombra leggera (Meyerbeer). 2-3. MB 18

### GARDEN, Mary (s)

317 12" Columbia Tricolor A 5289. JONGLEUR DE NOTRE DAME: Liberté / HÉRODIADÉ: Il est doux (Massenet). Alm.2/2-3. MB 12

### GARDNER, Stewart (b)

318 10" HMV 5-2081. FOUR INDIAN LOVE LYRICS: The Temple Bells (Woodforde-Finden). 3. MB 5

319 10" HMV 5-2082. FOUR INDIAN LOVE LYRICS: Less than the Dust (Woodforde-Finden). 3. MB 5

### GASTON, Martha (s)

320 10" Zonophone X-23152. FLEDERMAUS: Arie der Rosalinde. 5. MB 5

### GENTNER-FISCHER, Else (s)

321 12" ac. P 65736. ROSENKAVALIER: Monolog der Marschallin (Strauss) / SCHATZGRÄBER: Wiegenlied der Els (Schreker). 2. MB 50

### GERHARDT, Elena (ms)

1162 10" Red SG 70528. Wiegenlied / Sapphische Ode (Brahms). Piano acc. **Bruno Seidler-Winkler**. *Sscrs. side 1, therefore* 3/2-3. MB 35

322 12" Electrola DB 1021. Von ewiger Liebe / Immer leiser wird mein Schlummer (Brahms). Piano acc. **Paula Hegner**. 2. MB 7

323 12" Vocalion A-0220. An die Musik (Schubert) / Sapphische Ode (Brahms). Piano acc. **Harold Craxton**. *Sscrs side 1, therefore.* 3/2-3. MB 12

324 12" Cz. HMV ES 640. a) Vergebliches Ständchen b) Das Mädchen spricht / Auf dem Kirchhofe (Brahms). Piano acc. **Harold Craxton**. 2. MB 12

325 12" Red MRG 043261. PARIDE E ELENA: O, del mio dolce ardor (Gluck). *Pimply surface and many scrs, gen.* 4. MB 15

### GIANNINI, Dusolina (s)

326 12" It. VdP DB 1576. NORMA: Casta diva 2p. 2. MB 10

### GILION, Mario (t)

327 10¾" Fonotipia 39653/54?. TROVATORE: Ah sì, ben mio 2p. 4-5/5. MB 5

### GILLY, Dinh (b)

328 12" White HMV sample of mx Cc 1423-I. Amarilli (Caccini). Half of exceedingly rare DB 1256. 2. MB 20

### GIORGINI, Aristodemo (t)

329 12" Red PD 054250. SONNAMBULA: D'un pensiero (Bellini). w/ **HUGUET** & Coro della Scala. 3 or b. MB 35



### GLÄSER, John (t)

- 330 12" Parlophon P.9084. MIGNON: O weine nicht / CAVALLERIA RUSTICANA: O Lola. 2-3. MB 7  
331 12" Parlophon P.9125. OTELLO: Othellos Tod / Mattinata (Leoncavallo). 3. MB 5  
332 12" Parlophon P.9825. ZAUBERFLÖTE: Bildnis-Arie / EVANGELIMANN: Selig sind. 3 or b. MB 7

### GLUCK, Alma (s)

- 333 12" Red Vr 74249. HIPPOLYTE ET ARICIE: Rossignols amoureux (Rameau). 2. MB 8

### GÖTZE, Marie (c)

- 334 10" G&T 43847/70. ORFEO ED EURIDICE: Ach, ich habe sie verloren (Gluck) / TROVATORE: Lodernde Flammen. *Long scr. over entire playing surface side 1, therefore.* 3-4/2-3. MB 15  
335 10" GCR 43848/83. SAMSON ET DALILA: Sieh', mein Herz / O Liebe. 3/3 or b. MB 18  
336 10<sup>3/4</sup>" Odeon 34469/517. TROVATORE: In uns're Heimat / SAMSON ET DALILA: Die Sonne, sie lachte. 2" *patina side 2 (not through) is silent, NR side 2, oth.* 3. MB 25  
337 11" H&D CS Pathé 15524/25. Aus der Jugendzeit (German Folk Song) / SERSE: Largo (Händel). *Many scrs, but plays without sonic problems, so called.* Still 3. MB 15  
338 12" Anker 9410. EVANGELIMANN: O schöne Jugendtage (Kienzl) / PROPHÈTE: Segens-Arie (Meyerbeer). Creator side 1. Alm.2. MB 20

### GRANI, LYANA (s)

- 339 12" It. Columbia GQX 11097. RIGOLETTO: Caro nome / MATRIMONIO SEGRETO: Perdonate, signor mio (Cimarosa). 2. MB 7

### GRASENICK, Mary (s)

- 340 12" Vox \*02113. BOHÈME: Man nennt mich jetzt nur Mimi / TOSCA: Gebet. *Edge-chip ntg, grainy surfaces, therefore.* 4. MB 7

### GRAVEURE, Louis (t)

- 341 10" G 10135. Es gibt nur eine Liebe / Ich zog hinaus (Künnecke). 3. MB 5

### GREINDL, Josef (bs)

- 342 12" DGG 72063. Edward / Der Nöck (Loewe). Piano acc. Hertha Klust. alm. 2. MB 7

### GROH, Herbert Ernst (t)

- 343 10" Parlophon B.48265. SCHÜTZENLIESEL: Mutterl-Lied (Eysler) / VEILCHENMÄDEL: Ich hab' in den Himmel geseh'n (Hellmesberger). 3 or b. /2-3. MB 7

### GÜNTHER, Carl (t)

- 344 12" SG 65628. ELISIR D'AMORE: Heimlich aus ihrem Auge / CAVALLERIA RUSTICANA: Abschied von der Mutter. 2-3/3. MB 10  
345 12" SG 65678. PAGLIACCI: Jenen Namen / Jetzt spielen. Still 3. MB 5  
346 12" Vox \*03011. FREISCHÜTZ Durch die Wälder 2p. 3/4. MB 6

### GURA, Hermann (b)

- 347 10" G&T 3-42101/02. Heinrich der Vogler / Der Edelfalk (Loewe). *IPC side 1 (not through) far from grooves, oth.* 3-4/3. MB 10

### GUTHEIL-SCHODER, Marie (s)

- 348 7" G&T 43175. CARMEN: Draußen am Wall von Sevilla. 3. MB 250

### GUTTMANN; Wilhelm (b)

- 349 12" ac. Odeon AA 53224/25. HANS HEILING: An jenem Tag (Marschner) / NACHTLAGER VON GRANADA: Romanze (Kreutzer). Rare. *Some greying side 1, but plays well.* alm. 3/3 or b. MB 35

### GUYLA, Jeanne (s)

- 350 12" Fr. DG DB-4907. HÉRODIADE: Duo du 1er Acte / Duo de la prison (Massenet). w/ VEZZANI. Rarely recorded selections. 2. MB 25

### HABICH, Eduard (b)

- 351 12" Homokord 50046/48. FREISCHÜTZ: Arie des Kilian / VAN ENDERT: CAVALLERIA RUSTICANA: Osterchor w/ Chor der Kgl. Hofoper Berlin. Elisabeth van Endert not mentioned on label side 2, but clearly audible (unfortunately). 4/3. MB 7

### HAFGREN, Lilly (s)

- 1164 12" ac. Odeon 76284/85. WALKÜRE: O süßeste Wonne 2p. w/ VOGELSTROM. Rare. 4-5. MB 7  
352 12" ac. P 65676. PARSIFAL: Ich sah das Kind / Seit Ewigkeiten harr' ich deiner. *Cluster of sscr side 2, gen.* 3-4. MB 15

### HAHN, Reynaldo (b)

- 353 10" HMV 4-32077/78. Offrande (Hahn) / PECHEURS DE PERLES: Air (Bizet). Piano acc. by himself. *Rough starts, NR and scr side 2,* Still 3. MB 18

### HANSEN-SCHULTHESS, Claire (s)

- 354 12" Polyphon 50384. DRAGON DE VILLARS: Er liebt mich (Maillart) / DON PASQUALE: Auch ich versteh' die feine Kunst. Rare. *Short scr. gives few tics side 1, oth. a clean* 2-3. MB 75



Marie Gutheil-Schoder

### HARRISON, John (t)

- 355 10" G&T 3-2280. Nirvana (Adams). 4. MB 5  
356 10" PD 4482. Could a man be secure (Goodwin) . w/ **RADFORD**. 2. MB 10

### HEINEMANN, Alexander (b)

- 357 10" MRG/CRG 4-42467/68. Phyllis und die Mutter (Wandersohn) / Ich liebe dich (Beethoven). *NR side 1, ND and scr. Side 2, gen. still 3*. MB 7  
358 12" Columbia A 5269. Am Neckar, am Rhein (Abt) / Ständchen (Schubert). 2-3. MB 10  
359 12" MRG 042329/30. ELIJAH: Es ist genug / In dieses Grabes Dunkel (Beethoven). *RC NTG side 1, edge-flake not aff. music side 2, oth. 2-3*. MB 15

### HELDY, Fanny (s)

- 360 12" Fr. DG DB 1271. TRAVIATA: Quel trouble 2p. 2. MB 7

### HEMPEL, Frieda (s)

- 361 10¾" Odeon 50249/54. Il Bacio (Arditi) / MARTHA: Letzte Rose. alm. 2. MB 10  
362 10¾" Odeon 64852/61. LUCIA DI LAMMERMOOR: Cavatine 2p. Quite uncommon. ¼" *deep scr. side 2, oth. 3-4/3*. MB 8  
363 12" Electrola DB 353. NOZZE DI FIGARO: Deh vieni non tardar / BOHÈME: Mi chiamano Mimi. 2-3. MB 6  
364 12" KSG 85285. BARBIERE DI SIVIGLIA: Arie der Rosine 2p. 2. MB 10  
365 12" KSG 85293. Il Bacio / Parla! (Arditi). 2. MB 10  
366 12" ac. Odeon 80032/33. TRAVIATA: So hold, so reizend / O laß uns fliehen. w/ **NAVAL**. Uncommon. *One grey line each side, oth. 3 or b*. MB 18  
367 12" Mauve HMV AGSB 29. MIREILLE: O d'amor mes saggera (Gounod) / ROBERT LE DIABLE: Robert, toi que j'aime (Meyerbeer). *Closed blister side 2, oth. 2*. MB 10  
368 12" s/s Pink MRG 053290. MIREILLE: O d'amor mes saggera (Gounod). 2. MB 7  
369 12" s/s Pink SG 053263. NOZZE DI FIGARO: O vieni, non tardar. 2. MB 7

### HENKE, Waldemar (t)

- 370 12" ac. Homocord B.8261. GASPARONE: Er soll dein Herr sein / BETTELSTUDENT: Ich hab' kein Geld (Millöcker). w/ Staatsopern-Orch., cond. by **Carl Ehrenberg**. *Many sscr, therefore 4*. MB 6

### HENSEL, Heinrich (t)

- 371 10¾" Odeon Rx 99894/95. TIEFLAND: Ich grüß' noch einmal meine Berge / TROVATORE: a) Ständchen  
b) Daß noch einmal sie erschiene. *Scrs side 2, 3/3-4*. MB 7

### HERMANN, Agnes (c)

- 372 10" CRG 12947. TROVATORE: Lodernde Flammen / In uns're Heimat w/ **MEADER**. 3. MB 15

### HERPER, Guido (b)

- 373 12" ac. Parlophon P.348. TROMPETER VON SÄCKINGEN: Behüt' dich G'tt (Neßler) / ZAR UND ZIMMERMANN: Zarenlied (Lortzing). *EB NTG, oth. 2-3/3-4*. MB 8

### HERRMANN, Josef (b)

- 374 12" Electrola DB 5642. Inno a Roma / **Leipzig Radio Chorus**: TURANDOT: Perche tarda la luna (Puccini). Sung in German. 2. MB 10

### HESCH, Wilhelm (bs)

- 375 10" G&T 2-42504. WAFFENSCHMIED: Auch ich war ein Jüngling. The rare 1902 version, superior to the later one. 2-3. MB 20  
376 10" orig. G&T 44167. PRODANÁ NEVĚSTA: Duett (Smetana). w/ **SCHRÖDTER**. 1902 recording. *Some greying and sscr, plays as. 3*. MB 15

### HOFFMANN, Baptist (b)

- 377 10" CRG V.\*2-22087/88. TANNHÄUSER: Lied an den Abendstern / FLIEGENDER HOLLÄNDER: Wie aus der Ferne. 3-4/still 3. MB 12

### HOFMANN, Ludwig (bs)

- 378 12" PoW Odeon O-6661. Im kühlen Keller (Fischer) / LUSTIGE WEIBER VON WINDSOR: Als Büblein klein (Nicolai). Uncommon PoW issue. *A perfect. 1-2*. MB 8

### HOLM, Grete (s)

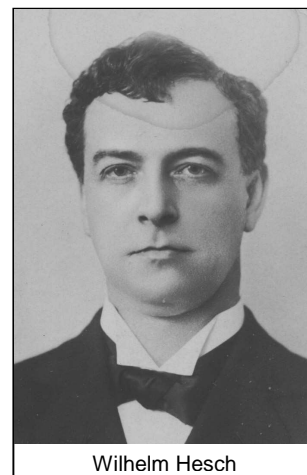
- 379 11" H&D CS Pathé 51124/26. FLEDERMAUS: Trinklied w/ **ROHR** / FÖRSTERCHRISTL: Die Christl aus'n Wienerwald (Jarno). *1/2" cr, oth. 4*. MB 5

### HUGUET, Josefina (s)

- 380 10" G&T 53474. TRAVIATA: Ah! Forse é lui. 2-3. MB 15  
381 10" G&T 54296. TRAVIATA: Sempre libera w/ **LARA**. 4. MB 7  
382 10" orig. G&T 54018. MIGNON: Duo del 3° Acto . w/ **PERELLO DE SEGUROLA**. *Recorded Barcelona 1903. 4 or b*. MB 15

### HÜNI-MIHACSEK, Felicie (s)

- 383 12" PoW DGG 66615. ZAUBERFLÖTE: Ach, ich fühl's / LOUISE: Seit mein Herz (Charpentier). 2. MB 8



### HÜSCH, Gerhard (b)

384 12" Odeon O-6879. Die Uhr / Tom der Reimer (Loewe). Side 2 w/ piano acc. by **Michael Raucheisen**. Short NR side 2, oth. **2-3**. MB 6

### HUTT, Robert (t)

385 12" MRG 042419/20. ZAUBERFLÖTE: Bildnis-Arie / AIDA: Holde Aida. NR end of side 1, oth. **3**. MB 5

386. 12" Odeon Rxx 76581/82. MEISTERSINGER: Preislied / Am stillen Herd. **3/3 or b**. MB 10

387 12" ac. Odeon Rxx 76585/88. MARTHA: Ach so fromm / AIDA: Holde Aida. Martha label duplicated side 2. **alm. 2**. MB 12

### HYDE, Walter (t)

388 10¾" Odeon 66040/58. MIKADO: Act 1 Song and Chorus / If you want to know (Sullivan). w/ chorus. **2-3**. MB 20

389 12" GMR 02256. CONTES D'HOFFMANN: Kleinzack w/ chorus of The Beecham Light Opera Co. Orch. cond. by **Thomas Beecham**. **2-3**. MB 15

### ISALBERTI, Silvano (t)

390 12" Pink & White. Lyrophon J.118/121. CARMEN: Il fiore / Occhi di Fata (Denza). Scarce. Sscr. gen. **Still 3/3 or b**. MB 25

### ISLANDI, Stefan (t)

391 12" Scand. HMV DB 5247. ELISIR D'AMORE: Una furtiva lagrima / BOHÈME: Che gelida manina. **alm. 2**. MB 7

### IVOGÜN, Maria (s)

392 12" KSG 85313. Il Pensieroso (Händel) / Frühlingsstimmen (Strauß). Closed blister end of side 1, oth. **alm. 2**. MB 12

393 12" ac. Brunswick 30107. An der schönen blauen Donau (Strauß) / Schweizer Echolied (Eckert). **alm. 2**. MB 10

394 12" s/s Odeon LXX 76978. Geschichten aus dem Wiener Wald (Strauß). **3**. MB 8

### JADLOWKER, Hermann (t)

395 10" Red SG 70634/47. Heimat / Wiegenlied (Gretshainov). Edge-flake NTG side 1, oth. **3**. MB 20

396 10" s/s Red SG 70593. Ständchen (Strauss). Piano acc. **Bruno Seidler-Winkler**. **3**. MB 8

397 10¾" Odeon 64344/57. MEISTERSINGER: Preislied / EVANGELIMANN: Selig sind. **3/4**. MB 5

398 10¾" Odeon 64347/49. RIGOLETTO: O wie so trügerisch / TOSCA: Wie sich die Bilder gleichen. **3**. MB 8

1160 10¾" Odeon 99093/497. PAGLIACCI: Hüll' dich in Tand / **VOGELSTROM**: CARMEN: Blumenarie. Lt. NRs side 1, gen. **3 or b**. MB 25

399 10¾" Odeon 99900/01. CARMEN: Duett Micaela-Don José 2p. w/ **HEMPEL**. w/ orch. cond. by **Eduard Künneke**. **3**. MB 10

400 12" Red SG 72671. CONTES D'HOFFMANN: Trinklied w/ choir / ZAR UND ZIMMERMANN: Lebe wohl. **3**. MB 15

401 12" s/s Red SG 72524. LOHENGRIN: Mein lieber Schwan. **2**. MB 12

### JANSSEN; Herbert (b)

402 12" Ultraphon E 311. TANNHÄUSER: Wohl wußt' ich / Wie Todesahnung. **2**. MB 10

### JÁSZAI, Mimi (s)

403 11" H&D CS Pathé 39175/78. Kit gyászol a fecske madár / ARANYVIRÁG: A sziv (Huszka). Announced, from early Artistical Record Cylinders. Long NR (?) gives few *It.tics*, oth. **3/2-3**. MB 15

### JÖKEN, Karl (t)

404 10" Kristall 6107. ZIGEUNERBARON: Als flotter Geist / BETTELSTUDENT: Ich hab' kein Geld. **3 or b**. MB 5

### JONES-HUDSON, Eleanor (s)

405 12" PD 03106. Ring on sweet Angelus (Gounod). **2-3**. MB 15

### JOURNET, Marcel (bs)

406 10" Red Vr GP 64035. BOHÈME: Vecchia zimarra. **alm. 3**. MB 7

407 12" s/s White-label Vla 74269. REINE DE SABA: Sous les pieds (Gounod). **2**. MB 16

### JYSOR, Robert (b)

408 11" H&D CS. Opéra 1050. MASCOTTE: Ces envoyés du paradis (Audran) / COEUR ET LA MAIN: L'Adjudant et sa monture (Lecocq). **3**. MB 7

### KAISIN, Franz (t)

409 12" Fr. P 566042. MUETTE DE PORTICI: Amour sacré (Auber) / RICHARD COEUR DE LION: Grand duo (Grétry). w/ **BECKMANS**. **2**. MB 10

### KAKTIN, Adolf (b)

410 10" HMV EK 61. Elegie (Glinka) / Am Kamin (Batorin). **2**. MB 10

411 12" HMV EL 1002. EUGEN ONEGIN: Air of Gremin / MAZEPPA: Air (Tchaikovsky). **alm. 2**. MB 10

### KAMIONSKY, Oskar (b)

412 10" Red Anker 14030/15203. BALLO IN MASCHERA: Eri tu / **Choir of Teatro Regio Torino**: FAUST: Soldatenchor. Small EB NTG. Looks 4-5, but plays as 3-4, so graded. **4**. MB 10



**KANDL, Eduard (bs)**

413 10" G 23914. Wenn ich einmal der Herrg'tt wär' (Binder) / Im tiefen Keller (Fischer).  
NR side 1, oth. 3. MB 4

**KARENZIN, L.M. (t)**

414 10" Zonophone X-2-62477/2-64035. EUGEN ONEGIN: Lenski-Arie / Arioso und Duett.  
w/ **ERSHOVA**. 3-4/4-5. MB 10

**KASE, Alfred (b)**

415 12" ac. Odeon AA 57060/61. HANS HEILING: Seit jenem Tag (Marschner) / RIGOLETTO:  
Feile Sklaven. 4. MB 7

**KEMP, Barbara (s)**

416 12" SG 65262. AIDA: Zu des Niles heil'gen Ufern! 2p. w/ **ARNDT-OBER, KNÜPFER,**  
**JÖRN, KRASA & Chor** d. Kgl. Hofoper Berlin. 3-4. MB 8

**KIPNIS, Alexander (bs)**

417 12" HMV D 2018. WILDSCHÜTZ: Fünftausend Taler (Lortzing) / LUSTIGE WEIBER VON WINDSOR: Als Büblein klein (Nicolai).  
2. MB 8

418 12" US Columbia 7280-M. TANNHÄUSER: Lied an den Abendstern / LOHENGRIN: Königsgebet. 2. MB 7

**KIRCHNER, Alexander (t)**

419 12" ac. Homokord 8119. AIDA: Holde Aida / ELISIR D'AMORE: Una furtiva lagrima. w/ Dt. Opernh.-Orch., cond. by  
**Ignatz Waghalter**. 3-4. MB 8

**KIRKBY LUNN, Louise (c)**

420 12" s/s Buff HMV 2-054040. GIOIELLI DELLA MADONNA: T'eri un giorno ammalato (Wolf-Ferrari). w/ **McCORMACK**.  
alm. 2. MB 12

421 12" Silver Vr IRCC 147. CLEMENZA DI TITO: Non più di fiori (Mozart) / GIOCONDA: L'amo come il fulgor del ceator.  
w/ **DESTINN**. 2. MB 15

**KLOSE, Margarete (c)**

422 12" DGG 68290. Die junge Nonne / Gretchen am Spinnrad (Schubert). Piano acc. Michael Raucheisen. 2. MB 7

**KNOTE, Heinrich (t)**

423 10" CRG 4-42456/3-44083. LOHENGRIN: Schwanenlied / SIEGFRIED: Siegfried und der Waldvogel. w/ DIETRICH. 2-3. MB 15

424 10" GCR 3-42570/83. MEISTERSINGER: Am stillen Herd / Preislied. 3. MB 10

425 10" GCR 3-42634/2-44132. TROVATORE: Arioso / **BOSETTI**: CONTES D'HOFFMANN: Barcarole w/ **MATZENAUER**.  
2-3. MB 12

426 10" SG 61636. WALKÜRE: Liebeslied / LOHENGRIN: Atmest du nicht. Lt. NR side 1, oth. 3 or b. MB 7

427 10" GCR 3-42571/84. WALKÜRE: Liebeslied / LOHENGRIN: O Elsa, nur ein Jahr. 3-4. MB 5

428 12" MRG 042294/95. SIEGFRIED: Waldweben 2p. NR side 1, oth. alm. 2. MB 8

429 12" PD 042183/84. TANNHÄUSER: Romerzählung 2p. Nds side 1, oth. 3-4. MB 5

430 12" SG 65103. FREISCHÜTZ Durch die Wälder 2p. 1/2" scr. Side 1, oth. 3. MB 6

431 12" SG 65528. MARTHA: Ja, seit frühester Kindheit Tagen w/ **BENDER** / LOHENGRIN: Das süße Lied verhallt w/ **FAY**.  
The only recording of Maude Fay. 3. MB 15

**KNÜPFER, Paul (bs)**

432 10" G 61733. UNDINE: Lied an die Flasche / Im Wein ist Wahrheit w/ **HENKE**. 3/3-4. MB 5

433 10" SG 13274. Ein feste Burg /Vater, ich rufe dich!. 2-3/3. MB 8

434 10" SG 13976. LUSTIGE WEIBER VON WINDSOR: Trinklied / MARTHA: Porterlied. Still 3/3. MB 5

435 10" SG 61728. ZAR UND ZIMMERMANN: O sancta justitia (Lortzing) 2p. alm. 2. MB 15

436 10" Vaterländische G 13274. Ein feste Burg /Vater, ich rufe dich!. Label with portrait of Kaiser Wilhelm II. 3. MB 12

437 12" Electrola EJ 693. Archibald Douglas (Loewe) 2p. alm. 2. MB 10

438 12" MRG 042382/044223. MEISTERSINGER: Anrede des Pogner / Laß seh'n, ob Meister Sachs zu Haus w/ **VAN ENDERT**.  
2-3/3. MB 10

439 12" SG 65181. ZAR UND ZIMMERMANN: Singschule (Lortzing) 2p. w/ choir. 2-3/3. MB 10

**KOERFER, Fritz (b)**

440 12" SG 044216/17. RHEINGOLD: Ruf des Donner und Schlußgesang der Rheintöchter 2p. w/ **VON SZKILONDZ,**  
**ARNDT-OBER, VON SCHEELE-MÜLLER & SOMMER**. 3. MB 10

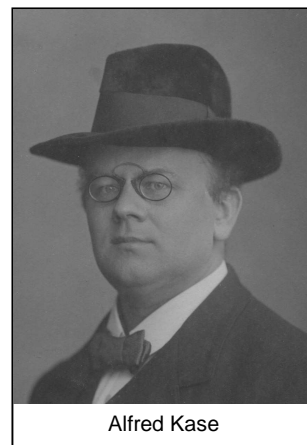
**KOMLÓSSY, Emma (s)**

441 10" Favorite 1-29660/61. MÁGNÁS MISKA: Hopsza Sári / Cintányéros (Szirmai). w/ **UJVÁRI**. Still 3/3. MB 15

442 10" Favorite 1-29677/1-025699. WO DIE LERCHE SINGT: Kis Jiliskám, kis pacsirtám w/ **NÁDOR** /  
**UJVÁRI**: Palikám, Palikám (Lehár). Pictures of Nádor and Ujvári on labels. 3-4/4. MB 7

**KORSOFF, Lucette (s)**

443 12" PD 033049/50. NOCES DE JEANNETTE: Air du rossignol (Massé) 2p. 4 or b. MB 7



Alfred Kase

### KOSHETZ, Nina (s)

- 444 12" Schirmer 5512. Valse (Arensky) / a) None but the lonely heart b) At the ball (Tchaikovsky). Piano acc. **Celius Dougherty** side 1 and Nina Koshetz herself side 2. alm. 2/2. MB 75  
445 12" Fr. DG DB-1204. KNYAZ IGOR: For long past (Borodin) / SADKO: Berceuse (Rimsky-Korssakov). 2. MB 12

### KOTSIS, Gyula (t)

- 446 10" CRG 104463/64. Nem akar az ökör csorda legelni / Hess légy ne szállj rám. w/ **TIHANYI. 2/2-3**. w/ piano acc. MB 25

### KÖTTER, Paul (t)

- 447 12" Ultraphon E 361. FORZA DEL DESTINO: In dieser feierlichen Stunde / OTELLO: Bei des Himmels ehernem Dache. w/ **SCHÖFFLER. 3-4**. MB 5

### KRAUS, Ernst (t)

- 448 10" G&T 3-42091. MEISTERSINGER: Am stillen Herd. 3. MB 10  
449 10" G&T 3-42118. LOHENGRIN: Schwanenlied. 3-4. MB 7  
450 10" GCR 3-42091/720. MEISTERSINGER: Am stillen Herd / LOHENGRIN: Höchstes Vertrauen. 2-3/3. Rare in this condition. MB 8  
451 10" SG 61988. SAMSON ET DALILA: Siehe mein Elend, Herr! 2p. w/ choir. Uncommon. *Patina just to first grooves is silent, blister side 2, oth. 2-3/still 3*. MB 18  
452 12" G&T 044056/57. LOHENGRIN: Wenn ich im Kampfe für dich siege / Das süße Lied verhallt. w/ **DESTINN. 4**. MB 10  
453 12" MRG 042265/040622. GÖTTERDÄMMERUNG: Siegfrieds Tod und Trauermarsch 2p. Lt. NR side 1, oth. 2-3. MB 12  
454 12" MRG 044195/96. WALKÜRE: Todverkündigung 2p. w/ **MORENA. alm. 2**. MB 16  
455 12" SG 65050. GÖTTERDÄMMERUNG: Siegfrieds Tod und Trauermarsch 2p. 3/3-4. MB 6  
456 12" SG 65123. TRISTAN UND ISOLDE: Wie sie selig / MEISTERSINGER: Preislied. 2-3. MB 10  
457 12" SG 65245. EVANGELIMANN: Lasset die Kleinen zu mir kommen! (Kienzl) 2p. w/ **VON SCHEELE-MÜLLER & children's choir. 2/alm. 2**. MB 10  
458 12" GMR 042194X/95X. SIEGFRIED: Waldweben 2p. Lt. NR at start and small cluster of sscr side 2, oth. 3. MB 8  
459 2-12" SG/GMR 65117-044170/71. WALKÜRE: Müd' am Herd fand ich den Mann 4p. w/ **KNÜPFER-EGLI & KNÜPFER. 2-3**. MB 18

### KUPPER, Annelies (s)

- 460 12" DGG 68362. AIDA: Wehe, mein Vater 2p. w/ **REINMAR**, orch. cond. by **Georg Solti. 2**. MB 7  
461 12" DGG 68432. AIDA: Ich seh' dich wieder 2p. w/ **FEHENBERGER**, orch. cond. by **Georg Solti. 2**. MB 7  
462 12" DGG 72099. AIDA: Introduction, Szene und Duett aus dem 2. Akt 2p. w/ **HÖNGEN**; Orch. d. Sächs. Staatskap. cond. by **Karl Böhm. alm. 2**. MB 7

### KURT, Melanie (s)

- 463 12" ac. Homocord B.8163. CAVALLERIA RUSTICANA: Arie der Santuzza / TANNHÄUSER: Dich, teure Halle. w/ Dt.-Opernhaus-Orch., cond. by **Ignatz Waghalter. Heat-damage, therefore. 4-5**. MB 5

### KURZ, Selma (s)

- 464 10" Grey ac. P 80079. BALLO IN MASCHERA: Saper vorreste / **LEHMANN**: FAUST: Auf, eilet! w/ **HUTT & BOHNEN. 3**. MB 18  
465 12" ac. Red P 72847. MIGNON: Styrienne / HUGUENOTS: Pagen-Arie (Meyerbeer). 2. MB 25  
466 12" Red MRG 043181. KÖNIGIN VON SABA: Lockruf (Goldmark). 3-4. MB 7  
467 12" s/s Opera Disc 72645. DON GIOVANNI: Batti, batti. *Two closed blisters at start, oth. 2*. MB 15  
468 12" s/s White-label HMV Sample 2-053078. DON PASQUALE: So anch'io la virtu magica. 1-2. MB 20  
469 12" vinyl. Historic Masters HMB.22. DIAMANTS DE LA COURONNE: Air and variations (Auber) / DON CARLO: Tu che la vanita. Unissued Gram. Co. mx 771/72 m. 2. MB 10

### KUTTNER, Max (t)

- 470 10" ac. Homocord B.1820. Mädél, ich bin dir so gut (Enders) / Der Rhein, der Wein und Du (Palm). *Long NR side 1, oth. 3*. MB 4

### KUTZNER, Albert (t)

- 471 10 3/4" Odeon 50173/78. LUSTIGE WITWE: Der kleine Pavillon / Zauber der Häuslichkeit (Lehár). w/ **OBERMAIER**. Rare. 4/4-5. MB 8

### LAFARGUE, Maria (s)

- 472 10 3/4" Odeon 60201/316. CARMEN: Habanera / WERTHER: Les larmes. 5/4-5. MB 4

### LANGENDORFF, Frieda (ms)

- 473 10" Anker 230. MARTHA: Letzte Rose / Still wie die Nacht (Bohm). *Long scr. over entire playing surface side 1, gen. 4*. MB 10

### LASSNER, Oscar (b)

- 474 12" Polyphon 50434. CARMEN: Torerolied / DON GIOVANNI: Registerarie. 4/3. MB 8

### LATTERMANN, Theodor (bs)

- 475 12" ac. Parlophon P.356. ZAUBERFLÖTE: O Isis und Osiris / In diesen heil'gen Hallen. *Open blister side 1 and few lt. sscr side 2, oth. 2*. MB 15



Oscar Lassner

### LAUBENTHAL, Rudolf (t)

476 12" ac. Parlophon P.1069. EUGEN ONEGIN: Lenski-Arie / **SCHEURIG**: SCHWÄTZERIN VON SARAGOSSA: Spanisches Lied (Offenbach). 3/4. MB 8

### LAURENTI, Maria (s)

477 12" VT Columbia 52806-D. OTELLO: Ave Maria / MEFISTOFELE: L'altra notte. 2. MB 7

### LAURI-VOLPI, Giacomo (t)

478 12" ac. Brunswick 50073. BOHÈME: Che gelida manina / SCHIAVO: Quando nascesti tu (Gomez). *Two lt. scrs. side 1, oth.* 2. MB 10

### LAWRENCE, Marjorie (s)

479 12" Fr. DG DB-4925. WALKÜRE: Introduction du 2e Acte w/ **CLAVERIE** / Extrait du 3e Acte. 2. MB 16

480 12" Fr. DG DB-4937. SIGURD: Salut, splendeur du jour / O, palais radieux (Reyer). Side 2 an only record on 78? 2. MB 12

### LÁZARO, Hipólito (t)

481 10 s/s Regal 46736. RIGOLETTO: La donna è mobile. 3 or b. MB 10

482 10" Regal RS 5002. PURITANI: Vieni fra queste braccia / TROVATORE: Di quella pira. 4. MB 5

483 10" s/s Columbia Tricolor 46737. RIGOLETTO: Questa o quella. 3-4. MB 6

484 10" s/s Columbia Tricolor 46752. PURITANI: Vieni fra queste braccia. 4. MB 4

485 10" s/s Regal 47211. TROVATORE: Stretta. 4. MB 5

486 12" Columbia Tricolor 48782. FAUST: Salve dimora. Take 4. 2. MB 7

487 12" Columbia D 18005. MEFISTOFELE: Giunto sul passo estremo / Dai campi. Take 1 both sides. 2. MB 8

488 12" It. Columbia GQX 10215. L'AFRICAINA: O Paradiso / AIDA: Se quel guerrier io fossi. 2/2-3. MB 10

489 12" Red Vr 74495. L'AFRICAINA: O Paradiso!. 2. MB 7

490 12" s/s Columbia Tricolor 48787. MANON: Il sogno. 3 or b. MB 8

491 12" s/s Regal 48749. Favorite: Una vergine. *Small scuffs at start, oth.* 2-3. MB 10

492 12" s/s Regal 48792. MANON: Ah! dispar vision (Massenet). *Lt. scr. at start, oth.* 2-3. MB 10

493 12" s/s Regal 7176. AIDA: Celeste Aida. 2-3. MB 10

494 12" s/s Columbia Tricolor 48782. FAUST: Salve dimora. alm. 2. MB 8

495 12" s/s Regal 48747. L'AFRICAINA: O Paradiso. alm. 2. MB 10

496 12" s/s Regal 48748. FAVORITE: Spirito gentil. *Short scr. gives few tics, oth.* alm. 2. MB 12

497 12" s/s Regal 7178. PURITANI: A te o cara. 2-3. MB 10

498 12" s/s Regal 75800. TOSCA: E lucevan le stelle. 3 or b. MB 10

499 2-12" Columbia D 14666/18003. PICCOLO MARAT: Gran duetto Atto II (Mascagni) 4p. w/ **DE VOLTRI**. 2. MB 15

### LEHMANN, Lotte (s)

500 10" Red. Victor 1972. Tonerna (Sjöberg) / D'une prison (Hahn). Piano acc. **Ernö Balogh**. 2. MB 8

501 12" ac. Odeon Lxx 80933/45. BOHÈME: Man nennt mich jetzt Mimi / TOTE STADT: Der erste, der Lieb' mich gelehrt (Korngold). Orch. cond. by **Carl Besl** side 1, by **Georg Széll** side 2. *Two short lt Nrs side 2, oth.* 2-3. MB 15

502 12" ac. Red P 72907. BOHÈME: Man nennt mich nur Mimi / MIGNON: Kennst du das Land. 2. MB 25

503 12" ac. Red P 72915. UNDINE: Rezitativ und Arie (Lortzing) 2p. One of the very few recordings of this music and among the rarest Lehmann records. alm. 2. MB 75

504 12" Vinyl. Sample pressing of SG mx 152 ap. NOZZE DI FIGARO: So lang' hab' ich geschmachtet w/ **SCHLUSNUS**. 1-2. MB 10

505 12" Vinyl. Sample pressing of SG mx 155 ap. DON GIOVANNI: Reich' mir die Hand w/ **SCHLUSNUS**. 1-2. MB 10

### LEIDER, Frida (s)

506 12" Electrola DB 5626. a) Widmung b) Marienwürmchen / Meine Rose (Schumann). Piano acc. **Michael Raucheisen**. 2. MB 15

507 12" SG 65687. TOSCA: Duett 2p. w/ **GÜNTHER**. Rare. *One grey line side 1, oth. Gen.* 3. MB 30

508 12" ac. P 65627. TANNHÄUSER: Dich, teure Halle / TRISTAN UND ISOLDE: Isoldes Liebestod. 2. MB 50

509 12" ac. Red P 72961. TROVATORE: Terzett w/ **HUTT & SCHLUSNUS** / BALLO IN MASCHERA: Quartett w/ **SCHLUSNUS, HELGERS & ABENDROTH**. 2. MB 40

### LEISNER, Emmi (c)

510 10" Red SG 70709. TRISTAN UND ISOLDE: Einsam wachend / Liebesfeier (Weingartner). Rare. 2-3. MB 50

511 12" SG 65614. SAMSON ET DALILA: Sieh, mein Herz / Die Sonne, sie lachte. 2. MB 20

512 12" Red P 73020. WEIHNACHTSORATORIUM: Schlafe, mein Liebster / Schlage doch, gewünschte Stunde (Bach). 2. MB 25

513 12" White-label G-Test mx 638 BE 8/638½ BE 8. Wie bist du meine Königin (Brahms) / dto. Take 638½ issued as G 27326, take 638 is unissued. *2½" cr. luckily gives only few lt. tics at start of the unissued side, oth.* 2. MB 15

### LENGHI-CELLINI, Giuseppe (t)

514 12" ac. Parlophon P.307. CAVALLERIA RUSTICANA: Siciliana / Brindisi. 2. MB 7

### LEONHARDT, Robert (b)

- 515 10" Homokord 11358/95. MARTHA: Porter-Lied / **R.VOM SCHEIDT**: Soldatenart (Abt). 4/4-5. MB 5  
516 10" Homokord 1128/1084. Wenn du noch eine Mutter hast / **ROGAČ-WANG**: Des Vaters Rückkehr (Schäffer). 3-4. MB 4  
517 7" Zonophone 22234/35. Tief im Böhmerwald / Die Musik kommt (Straus).  
*Rough start both sides, oth. 3*. MB 12

### LIEBAN, Adolf (bs)

- 518 10" SG 13233. Ein rheinisches Mädchen (Hoppe) / Das Fräulein an der Himmestür (Genée). 3. MB 7  
519 10" SG 13385. Der Tiroler und sein Kind (Nessmüller) / So lang dein Mütterlein noch lebt, da bist du reich! (Tieck). 2-3. MB 10  
520 10" Vaterländische G 12875. Sodatenart (Abt) / Altniederländisches Dankgebet. w/ male quartet. Special WW I-label with Kaiser Wilhelm II. Still 3. MB 10



### LIEBAN, Julius (t)

- 521 10" Polyphon 30751. BOCCACCIO: Ehre Bürger der Stadt / Holde Schöne (von Suppé). w/ **G. WERNER & KANDL**. 2. MB 20

### LIEBENBERG, Eva (c)

- 522 10" Telefunken A 1138. Caro mio ben /Giordani) / Still wie die Nacht (Bohm). 2-3. MB 7  
523 12" Ultraphon F 214. SAMSON ET DALILA: Sieh', mein Herz / Die Sonne, sie lachte. 2. MB 7  
524 12" Telefunken Musterplatte mx 018729-5/29-6. Die Ehre G'ttes in der Natur (Beethoven) / dto. Orch. cond. by **Paul Kletzki**. Unissued takes, the issued take 018729-3 was conducted by Wilhelm Franz Reuss. 2-3. MB 75

### LIST, Emanuel (bs)

- 525 12" UK Parlophone E 10904. GÖTTERDÄMMERUNG: Hoiho! Ihr Gibichsmannen 2p. w/ Berliner Staatsopernchor. alm. 2. MB 8

### LLOYD, Edward (t)

- 526 10" G&T 3-2294. Bonnie Mary of Argyle. Piano acc. **Landon Ronald**. *Many scrs (no needle-wear)*. 4. MB 6

### LORDMANN, Peter (b)

- 1163 12" Vox \*03255. Grüßt mir das blonde Kind am Rhein (Heiser) / Wie Frauen küssen (**Lordmann**). *Two NDs give 2 tics each 1<sup>st</sup> side, oth. 3*. MB 12

### LUART, Emma (s)

- 527 12" Odeon 123678. FAUST: Il était un roi de Thulé / CONTES D'HOFFMANN: Barcarolle w/ **CERNAY**. 2. MB 7

### LUCCIONI, José (t)

- 528 12" Fr. DG DB-11115. ROMÉO ET JULIETTE: Cavatine / POLYEUCTE: Stances (Gounod). 2. MB 8

### LUDWIG, Walther (t)

- 529 12" PoW P 15477. EVANGELIMANN: Selig sind / KUHREIGEN: Zu Straßburg auf der Schanz (Kienzl) w/ choir. 2. MB 5

### LURIA, Juan (b)

- 530 10" Dacapo D-1047/48. JOCELYN: Berceuse (Godard) / Serenade (Gounod). 3/2-3. MB 15  
531 10" Favorite 1-15270/71. TANNHÄUSER: Als du in kühnem Sange / Wohl wußt' ich. *Sscrs, but no needle-wear, gen. 3/still 3*. MB 15  
532 12" Parlophon P.849. Das Herz am Rhein (Hill) / Das Heidegrab (Heiser). alm. 2. MB 10

### LUSSMANN, Adolf (t)

- 533 12" ac. Odeon AA 79276/57343. WALKÜRE: Liebeslied / **VOGELSTROM**: FLIEGENDER HOLLÄNDER: Steuermannslied. alm. 2/3. MB 20

### MAGINI-COLETTI, Antonio (b)

- 534 10<sup>3/4</sup>" Fonotopia 39374/77. CARMEN: Strofe del Toreador / LAKMÉ: Lakmé, quel ciglio a me si vela (Delibes). 4-5/3-4. MB 7  
535 10<sup>3/4</sup>" Fonotopia 39410/11. CRISTOFORO COLOMBO: Epilogo (Franchetti) 2p. 4-5. MB 7

### MALIPIERO, Giovanni (t)

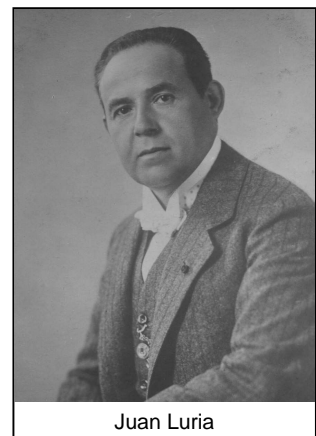
- 536 12" It. DB 5356. MIGNON: Ah! Non credevi tu / Addio Mignon. 2. MB 10

### MANDAHL, Thor (bs-b)

- 537 10" Lyrophon 1610/27. När stjernehären blänken (Körling) / **MALM**: SI J'ÉTAIS ROI: Romans (Adam). *Full of sscrs, therefore. 5*. MB 8

### MANN, Josef (t)

- 538 12" Odeon Rxx 80700/01. AIDA: Holde Aida / CARMEN: Blumenarie. *Sscrs, 3/3-4*. MB 8  
539 12" Odeon Rxx 80708/09. PAGLIACCI: Lache, Bajazzo / Nein, ich bin Bajazzo nicht bloß. alm. 2. MB 18  
540 12" s/s Odeon JXX 81902. JUIVE: Gebet, II.Akt. 3 or b. MB 15  
541 12" s/s Odeon JXX 81903. JUIVE: Recha, als G'tt dich einst. *Many sscrs.* 4. MB 8



Juan Luria

### MANN, Josef (cont.)

- 542 12" s/s Odeon LXX 80912. CARMEN: Blumenarie. 3. MB 8  
543 12" s/s Odeon LXX 80913. TRISTAN UND ISOLDE: Vision. 2. MB 15  
544 12" s/s Odeon LXX 80917. PARSIFAL: Amfortas! Die Wunde!. Scarce. *Long IC is silent (visible as shadow only), oth.* 3. MB 8  
545 2-12" s/s Odeon JXX 81900-01. TANNHÄUSER: Romerzählung 2p. Rare original form of issue (1919). *Scrcs, much rubbing, gen.* 3. MB 25

### MAŘÁK, Otakar (t)

- 546 10" CRG 931. PRODANÁ NEVĚSTA: Utiš se, Mařenko / Choir: Finale 1. Act (Smetana). Side 1 with piano acc. *Label damage side 2, EB NTG, oth.* 3. MB 7  
547 12" Parlophon P.60008. DALIBOR: Ó Zdeňku (Smetana) / **PETANOVÁ**: RUSALKA: Měsíčku na nebi hlubokém (Dvořák). 2. MB 10

### MARCELIN, Émile (t)

- 548 12" ac. Fr. DG W 675. LAKMÉ: Prendre le dessin d'un bijou (Delibes) 2p. 2. MB 8

### MARDONES, José (bs)

- 549 12" Columbia Tricolor A 5201. SIMONE BOCCANEGRÀ: Il lacerato spirito / STABAT MATER: Pro peccatis (Rossini). 2. MB 7  
550 12" Mauve HMV AGSB 27. VĚPRES SICILIENNES: O patria / NABUCCO: Vieni, o Levita!. 2. MB 12

### MARGERIE, Blanche (s)

- 551 7" Black. Zon-O-Phone 11969. NOCES DE JEANNETTE: Romance de l'Aiguille (Massé). 4-5. MB 15

### MARTY, Francis (t)

- 552 12" ac. White-label Parlophon 3264/67. A tes genoux le soir (Clément) / **CLOËREC-MAUPAS**: C'instant des Adieux. Unknown recordings of both singers (about 1912), unpublished? *Harmless IC is silent, inherent greying from very forward recording 1<sup>st</sup> side, therefore.* 3-4/3 or b. MB 22

### MASSARY, Fritzi (s)

- 553 10" Electrola EG 2605. EINE FRAU, DIE WEISS, WAS SIE WILL: Ich bin eine Frau / Jede Frau hat irgendeine Sehnsucht (Straus). alm. 2. MB 8  
554 10" HMV EG 652. EINE FRAU VON FORMAT: Liegt im Bereich der Möglichkeit / Du bist mein stiller Kompagnon (Krausz). Side 2 w/ **M.HANSEN**. Uncommon Massary, in fact the rarest of her electrics. 2/2-3. MB 30  
555 10" SG 13421. KAISERIN: Wäscherädellied w/ Chor des Metropol-Theaters / Du mein liebes Schönbrunn (Fall) w/ **WESSELY, KUTZNER** & Chor des Metropol-Theaters. Creator. *Lt. NR at start side 1, oth.* Still 3/2-3. MB 15  
556 10" HMV B 8738. OPERETTE: Countess Mitzi / Operette (Coward). Her last recordings, made 1934 in London. Still 3/3. MB 12  
557 12" SG 65573. LETZTER WALZER: O-la-la (Straus) / **ESTELLA**: SPANISCHE NACHTIGALL: Affentrot (Fall) w/ **BRANDT**. Creators. *Lt. NR end of side 1, still 3/2-3*. MB 15

### MATZENAUER, Margarete (ms)

- 558 10" GCR 3-44031/32. MIGNON: Schwalben-Duett w/ **BENDER** / **NAST**: NOZZE DI FIGARO: Brief-Duett w/ **EIBENSCHÜTZ**. Scarce. 3 or b. / 2-3. MB 35  
559 12" Black Vr 36287. SAMSON ET DALILA: Mon coeur / PROPHÈTE: Ah, mon fils!. 2. MB 7  
560 12" GMR 043128/29. RHEINGOLD: Erdas Warnung / WALKÜRE: Nicht weise bin ich. 3/3-4. MB 10

### MAUREL, Victor (b)

- 561 10¾" Fonotopia 39032 / 42. A Marechiarè (Tosti) / OTELLO: Sogno. Creator side 2. An alm. Perf. 2. MB 200

### MAZZOLENI, Ester (s)

- 562 10¾" Fonotopia 92821/22. OTELLO: Già nella notte densa 2p. w/ **ZENATELLO**. Alm.2. MB 30

### McCORMACK, John (t)

- 563 12" Columbia 869. O lovely night (Ronald) / FAVORITE: Spirito gentil. Odeon masters. 2. MB 10  
564 12" HMV DB 2868. Träume (Wagner) / Schlafendes Jesuskind (Wolf). 2. MB 20

### MC EACHERN, Malcom (bs)

- 565 12" Vocalion D-02071. HEIMKEHR AUS DER FREMDE: I am a roamer (Mendelssohn) / Le cor (Flégier). 2. MB 7

### MEANA, Sr. (b)

- 566 10" s/s Green PD 52350. BALADA DE LA LUZ: Coro de Húngaros (Vives). w/ choir, orch. cond. by Mtro. **Marquina**. *Bad NR at end, oth.* 4. MB 5

### MELBA, Nellie (s)

- 567 12" KSG 85158. BOHÈME: Wo ich selig von Glück / Addio. alm. 2. MB 10  
568 12" White HMV Advance copy 03046. Sur le lac (Bemberg). 2. MB 35  
569 12" White HMV sample of 4184 f. DON CEZAR DE BAZAN: A Séville (Gounod). Unpublished. 2. MB 50  
570 12" White HMV sample of 4194 f. The sounds of earth grow faint (Ronald). **Piano acc. by the composer**. Unpublished. 2. MB 50



Fritzi Massary



### MELBA, Nellie (cont.)

- 571 12" White-label vinyl sample pressing of Gram Co mx 4189/90 f. RIGOLETTO: Bella figlia w/ **THORNTON, McCORMACK & SAMMARCO** / FAUST: Trio-Final w/ **McCORMACK & SAMMARCO**. 2. MB 8
- 572 12" White-label vinyl sample pressing of Gram Co mx 4195 f/4214 f. Distance tests, including part of mad scene from HAMLET / ARMINIO: Pur dicesti (Lotti). Unpublished. 2. MB 20

### MELCHIOR, Lauritz (t)

- 573 12" Red SG 72863. TANNHÄUSER: Romerzählung 2p. 3. MB 12

### METTERNICH, Josef (b)

- 574 12" Austrian HMV DB 11549. TRAVIATA: Germont-Arie / RIGOLETTO: Feile Sklaven. 2. MB 7
- 575 12" Austrian HMV DB 11558. BALLO IN MASCHERA: a) Für dein Glück b) Erhebe dich / O nur du. 2. MB 7

### MICHAŁOWA, Maria (s)

- 576 10" CRG 2-43139/40. EUGEN ONEGIN: Brief-Szene 2p. 2/2-3. MB 15
- 577 10" G&T 23448. LUCIA DI LAMMERMOOR: Air. w/ **Semenov** (fl). 3-4. MB 10
- 578 10" G&T 2-43135. OPRITCHNIK: Arie (Tchaikovsky). *lt. greying, therefore* 3-4. MB 8
- 579 10" G&T 24485. EUGEN ONEGIN: Scene 1<sup>st</sup> Act. w/ **SOKOLSKY**. *Uncommon*. 2-3. MB 15
- 580 10" PD 2-43148. Mädel, Seelchen (Russian Song). w. balalaika acc. *A clean* 2-3. MB 10

### MILONA, Costa (t)

- 581 12" ac. Parlophon P.1380. RIGOLETTO: Questa, o quella / La donna è mobile. 2. MB 10
- 582 12" ac. Parlophon P.1631. ELISIR D'AMORE: Una furtiva lagrima / FAVORITE: Spirto gentil. 2. MB 10

### MINGHINI-CATTANEO, Irene (ms)

- 583 12" It. DG DB 1403. BALLO IN MASCHERA: Re dell'abisso 2p. 2. MB 8
- 584 12" It. VdP DB 1448. GIOCONDA: Figlia, che reggi w/ **DE MARTIS & GRANFORTE** / Voce di donna w/ **MASINI, BASI & LUCINI**. 2. MB 8

### MÖDL, Martha (s)

- 585 12" Telefunken E 3891. MACBETH: Arie der Lady Macbeth II.Akt / IV. Akt. 2-3. MB 5

### MONTFORT, Jeanne (c)

- 586 12" Fr. P 566041. SAMSON ET DALILA: Printemps qui commence / Mon cœur. w/ **KAISIN**. 2. MB 7

### MORENA, Berta (s)

- 587 10" GCR 43995/96. TANNHÄUSER: Gebet / Dich teure Halle. still 3/4. MB 8
- 588 12" GMR 044140/41. Liebeslied und Du bist der Lenz 2p. w/ **KNOTE**. 4/still 3. MB 12
- 589 12" MRG 044191/92. WALKÜRE: Du bist der Lenz 2p. w/ **KRAUS**. Still 3/3 or b. MB 15
- 590 12" MRG 044195/96. WALKÜRE: Todverkündigung 2p. w/ **KRAUS**. 3. MB 18
- 591 12" PD 043086/87. JUIVE: Er kommt zurück / LOHENGRIN: Du Ärmste kannst wohl nie ermessen. *Sev. NRs side 1 and some greying..* 4/3. MB 10
- 592 12" SG 65229. LOHENGRIN: Das süße Lied verhallt / Wenn ich im Kampfe für dich siege. w/ **KNOTE**. *Long scr. and short NR side 1,* 3-4. MB 10



Fritz Feinhals, Berta Morena, Heinrich Knoté and Bruno Walter

### MORRISSON; Louis (t)

- 593 12" HMV AU 17. CONTES D'HOFFMANN: Schep moed en heb vertrouwen / CARMEN: Bloemen lied. *Uncommon electric*. 2. MB 12

### MULLINGS, Frank (t)

- 594 12" Columbia L 1228. MEISTERSINGER: Prize Song / PAGLIACCI: On with the motley. 2. MB 7

### MYSZ-GMEINER, Lula (c)

- 595 12" P 19857. Der Einsame / Erlkönig (Schubert). Mx 113 bs side 2, quickly replaced with mx 143 bs II, under the same catalogue number. 2. MB 20

### NARÇON, Armand (bs)

- 596 12" Columbia RFX 4. HÉRODIADÉ: Astres étincelants / CID: Air de Don Diègue (Massenet). 2. MB 10

### NAST, Minnie (s)

- 597 10" GCR 2-43284/85. BALLO IN MASCHERA: Pagen-Arie / HUGUENOTS: Pagen-Arie. 4 or b. MB 12
- 598 10" Polyphon 2560. DON GIOVANNI: Reich' mir die Hand / MIGNON: Schwalben-Duett. w/ **R. VOM SCHEIDT**. Probably the worst version of the Mignon duet on record, due to Robert vom Scheidt who must have been drunk or suffering from a bad hangover. I wonder why a second take was not attempted or at least why this version was not withdrawn from publication. However, 100 years later we are happy (???) to have this important account of this duet which will undoubtedly leave a deep impression. Rare, needles to say. *Lt. NR and greying on forward spots side 1 only (we know why), so called.* Still 3-4/3. MB 35

### NAVAL, Franz (t)

599 10" orig. G&T 42816. MARTHA: Ach so fromm (Flotow). 1902 recording. *Surface looks dull, but has no audible effect on reproduction, gen. 3.* MB 25

### NEBE, Carl (bs)

600 10" Favorite 1-15324/34. Wein' nicht, Mutter (Kutschera) / Lindenwirtin (Abt). *Lt. NR side 2., 3/3-4.* MB 10

601 10" Homokord 1946/49. Verbotener Gesang (Gastaldon) / Der Trompeter (Speier). 3. MB 8

### NEMETH, Maria (s)

602 12" G 66620. TANNHÄUSER: Dich teure Halle / FLIEGENDER HOLLÄNDER: Senta-Ballade. 2. MB 15

603 12" P 66622. TOSCA: Vissi d'arte / AIDA: O patria mia. 2. MB 15

604 12" Electrola EJ 491. AIDA: Wehe, mein Vater! 2p. w/ **SCHIPPER**. Gramola-sticker on labels. 2. MB 15

### NEZHDANOVA, Antonina (s)

605 12" White sample pressing of Gram Co mx 319 af. ZHIZN ZA TSARYA: I do not grieve (Glinka). Issued on Amour 023149. 2. MB 35

### NØRBY, Einar (bs)

606 12" Tono X 25028. PORGY AND BESS: Bess, you is my woman now w/ **BREMS** / I got plenty o'nuttin' (Gershwin). Sung in Danish. Both took part in the European premiere. 2. MB 7

### NORÉ, Georges (t)

607 12" Pathé PDT 176. WERTHER: Pourquoi me réveiller / ROI D'YS: Aubade (Lalo). 2. MB 10

### NORENA, Kaja Eidé (s)

608 12" Fr. DG DB 5046. Pietà, Signore (attr. to Stradella) / Ave Maria (Verdi). 2. MB 15

609 12" It. DG DB 4902. HAMLET: Air d'Ophelia 2e Acte (Thomas) 2p. Not the mad scene (music unfamiliar on 78s for me). 2. MB 20

### NOVOTNÁ, Jarmila (s)

610 12" Cz. HMV AN 682. TRAVIATA: Lásko, ach lásko 2p. Sung in Czech. alm. 2. MB 15

### OESTVIG, Karl Aagaard (t)

611 12" Red SG 72827. LOHENGRIN: Gralserzählung / Abschied. 2. MB 20

### OLITZKA, Rosa (c)

612 12" s/s Columbia Tricolor 30834. GIOCONDA: Voce di donna. 2. MB 10

### OLIVERO, Magda (s)

613 12" Cetra BB 25050. AMICO FRITZ: Duetto della ciliege (Mascagni) 2p. w/ **TAGLIAVINI**. 2. MB 15

### OLSZEWSKA, Maria (c)

614 12" G 95468. Von ewiger Liebe / Die Mainacht (Brahms). Piano acc. **Dr. Eduard Steinberger**. 2. MB 8

615 12" Red SG 72982. GÖTTERDÄMMERUNG: So sitzt er 2p. 2. MB 30

616 12" s/s Red SG 72777. ALCESTE: Ihr Götter ew'ger Nacht (Gluck). 3-4. MB 15

### OLTRABELLA, Augusta (s)

617 12" Red Vr 13781. IL DIBUK: Ecotti, mia bella amica! (Rocca) 2p. w/ **DEL SIGNORE**. Oltrabella sang the world premiere 1934 in Milano. 2. MB 10

### ONEGIN, Sigrid (c)

618 10" Red SG 70619. BALLO IN MASCHERA: König des Abgrunds / TROVATORE: Lodernde Flammen. 2-3. MB 25

619 12" ac. P 72919. VIER ERNSTE GESÄNGE: Denn es gehet dem Menschen / Ich wandte mich (Brahms). *Rare.* alm. 2. MB 40

620 12" Jap. Vr ND-488. Du bist die Ruh' (Schubert) / Von ewiger Liebe (Brahms). 2. MB 7

621 12" Red SG 72738. Wo du hingehst (Hildach) / Dank sei dir, Herr (attr. to Händel). 2. MB 25

622 12" s/s Red SG 72689. Ich liebe dich (Beethoven). Piano acc. **Bruno Seidler-Winkler**. 2. MB 25

623 12" s/s Red SG 72690. Die Mainacht (Brahms). Piano acc. **Bruno Seidler-Winkler**. 2. MB 25

624 12" s/s White-label SG 72724. Pastorale (Bizet). Piano acc. **Bruno Seidler-Winkler**. 2. MB 75

### ORLOV, Polikarp D. (b)

625 10" Zonophone X-2-62141/42. Ermak (Dobrovolsky) / Novgorod (Dyutsh). 3-4/4-5. MB 12

### PACINI, Regina (s)

626 10¾" Fonotopia 39212/34. ZAUBERFLÖTE: Gli angui d'inferno / Paquia (Canzone Spagnola). *Pimply surfaces, gen. 3 or b.* MB 18

627 10¾" Fonotopia 39775/76. Ave Maria (Bach-Gounod) / Secondo Notturmo (Chopin). Side 1 with anon. violinist. *Two scuffs side 1, oth. a clean alm. 2.* MB 15

### PACYNA, Arthur (bs)

628 10" Beka 13376/77. WAFFENSCHMIED: Auch ich war ein Jüngling / LUSTIGE WEIBER VON WINDSOR: Als Büblein klein (Nicolai). 4. MB 5

### PAMPANINI, Rosetta (s)

629 12" It. Columbia GQX 10282. AMICO FRITZ: Duetto della ciliege (Mascagni) 2p. w/ **BORGIOI**. 2. MB 10

### PANZÉRA, Charles (b)

630 12" Fr. DG DB-4868. Nocturne (Franck) / Chanson de la nuit durable (de Séverac). 2. MB 10

631 12" Fr. DG DB-4971. Chanson triste (Duparc) / Le temps de lilas (Chausson). 2. MB 30

632 12" Fr. DG DB-5000. L'invitation au voyage / La vie antérieure (Duparc). Piano acc. **Magdeleine Panzéra-Baillet**. 2. MB 7

633 2-12" Fr. DG DB-5136-37. La Danse des Morts (Honegger) 4p. w/ **BARRAULT (voc), Pascal (v)**, choir & orch., cond. by **Charles Munch**. 3. MB 10

### PAOLI, Antonio (t)

634 10" Red PD 2-52712. ROBERT LE DIABLE: Di mia patria (Meyerbeer). Piano acc. Rare. 4. MB 15

635 10" Red PD 2-52712. ROBERT LE DIABLE: Di mia patria (Meyerbeer). Bright label. 2-3. MB 50

636 12" Red Vla 8037. AIDA: Nume custode w/ **DE SEGUROLA** / **BATTISTINI**: ERNANI: O sommo Carlo w/ **DE WITT & TACCANI**. 2. MB 7

### PARETO, Graziella (s)

637 12" Red GMR 053208. CARMEN: Aria di Micaela. Beautiful upper-half label sticker with writing angel trademark. alm. 2. MB 40

638 12" Red PD 053153. LUCIA DI LAMMERMOOR: Rondò. *Short scr., oth. a clean alm. 2*. MB 15

639 12" s/s Red Span. DG 2-053178. PECHEURS DE PERLE: Si come un di cadute il sole (Bizet). 3 or b. MB 10



### PATTI, Adelina (s)

640 12" Pink . G"PATTI"R 03083. MIGNON: Connais-tu le pays. Piano acc. **Alfredo Barili**. alm. 2. MB 15

641 12" Pink G"PATTI"R 03051. NOZZE DI FIGARO: Voi che sapete. Piano acc. **Landon Ronald**. alm. 2. MB 15

642 12" Pink HMV 03055. DON GIOVANNI: Batti, batti. Piano acc. **Landon Ronald**. alm. 2. MB 15

643 12" Pink HMV 03056. FAUST: Jewel Song. Piano acc. **Landon Ronald**. Still 3. MB 10

### PATTIERA, Tino (t)

644 10" Electrola EW 22. RIGOLETTO: Ach wie so trügerisch / PAGLIACCI: Jetzt spielen. Orch cond. by **Leo Blech**. 2. MB 7

645 12" Electrola EJ 218. BOHÈME: Wie eiskalt ist dies Händchen / **MÜLLER**: Man nennt mich jetzt Mimi. Orch. cond. by **Leo Blech**. Recorded live at the Berlin Staatsoper, 9.12.1927. *ULC extending in grooves side 2 only is silent, NH side 2, gen. 3*. MB 8

### PATTIERA, Tino (t)

646 12" P 66628. Ideale (Tosti) / Lolita (Buzzi-Peccia). 2. MB 8

647 12" Parlophon P.9036. TOSCA: Recondita armonia / E lucevan le stelle. 2. MB 7

648 12" ac. Red P 72727. AIDA: Celeste Aida / PAGLIACCI: Vesti la giubba. 2. MB 12

### PÁZMÁN, Ferenc (t)

Ferenc Pázmán (1873-1965) was not only an opera singer at the Budapest Népopera but later also an actor of some reknown.

649 10" SG 2-72443/70917. Elment (Kovács) / **KOZÁK** (cond. Gipsy Orch.): Szervusztok lányok (Ceglédi). 3-4/3. MB 10

### PEARS, Peter (t)

650 12" Red HMV DB 21423. Im Frühling / Auf der Bruck (Schubert). Piano acc. **Benjamin Britten**. alm. 2. MB 7

### PEDRINI, Maria (s)

651 12" Cetra CB 20499. ANDREA CHÉNIER: La mamma morta / AIDA: O cieli azzurri. 2. MB 20

### PEERCE, Jan (t)

652 12" HMV DB 21061. A dudele (Berditschewer) / A shepherd, a dreamer (Weinper). 3. MB 4

### PEREA, Emilio (t)

653 10" G&T 2-52418. PURITANI: A te o cara. *Two grey lines, oth. a remarkably clean copy, gen. 3*. MB 25

### PEROSIO, Margherita (s)

654 10¾" Fonotipia B 69301/02. TRAVIATA: Brindisi / Un di felice eterea. w/ **POLVEROSI**. 3 or b. MB 15

### PERRAS, Margherita (s)

655 12" Electrola DB 4498. CARMEN: Duett Micaela-Don José 2p. w/ **LUDWIG**. 2. MB 8

656 12" HMV DB 4475. TOSCA: Mit deinen Augen w/ **ROSWAENGE** / Gebet. 2. MB 8

### PERTILE, Aureliano (t)

657 12" ac. Odeon XX 86520/21. NERONE: Queste ad un lido fatal / Ecco la Dea si china (Boïto). alm. 2. MB 18

658 12" It. Columbia GQX 10675. PAGLIACCI: Vesti la giubba / CAVALLERIA RUSTICANA: Addio alla madre. alm. 2. MB 8

659 12" It. DG DB 1198. TROVATORE: Ah! Si ben mio / Stretta w/ **NESSI**, **LATTUADA** & choir. alm. 2. MB 7

660 12" It. Odeon F 5542. LUCIA DI LAMMERMOOR: Fra poco 2p. alm. 2. MB 12

### **PERTILE, Aureliano (cont.)**

661 12" It. Odeon N 6577. RIGOLETTO: Ella mi fu rapita / Mia sposa sara la mia bandiera (Rotoli). alm. 2. MB 12

662 12" It. VdP DB 1402. ELISIR D'AMORE: Una furtiva lagrima / OTELLO: Si, pel ciel w/ **FRANCI. 2-3**. MB 7

### **PETERSON, May (s)**

663 12" s/s brown shellac Vocalion 52003. STABAT MATER: Quis est homo (Rossini) w/ **FORNIA. 2**. MB 12

### **PICCAVER, Alfred (t)**

664 12" P 66770. TOSCA: Recondita armonia / E lucevan le stelle. 2. MB 7

665 12" P 66771. TROVATORE: Ah! Si ben mio / FORZA DEL DESTINO: O tu che in seno degli angeli. 2. MB 7

666 12" P 66889. BOHÈME: Che gelida manina / PAGLIACCI: Vesti la giubba. 2. MB 7

667 12" ac. Odeon XX 76959/65. ROMÉO ET JULIETTE: Gegrüßt, o Grab (Gounod) / MADAMA BUTTERFLY: Leb' wohl. 2-3/still 3. MB 7

### **PIETRASZEWSKA, Carolina (c)**

668 12" s/s White-label Vla 76006. BALLO IN MASCHERA: Re dell'abisso. 2. MB 10

### **PINZA, Ezio (bs)**

669 12" It. VdP DB 698. JUIVE: Se oppressi ognor / MOSÈ IN EGITTO: Preghiera (Rossini). 2. MB 7

### **PODOLSKAJA, Tilia (ms)**

670 10" Blue Hung. Odeon XY 194. A jiddische Mame (Pollack, arr. Rintzler) / Ribajnoj sel ajlom (Berdicever, arr. Rintzler). Piano acc. **Géza Fóti. 2-3/3**. MB 20

### **POLÁK, Robert (bs)**

Robert Polák (1866-1926) was a well-known bass at the Prague National Theatre from 1894 onwards. Later he was also active as an opera director, producing 130 operas including all Smetana operas.

671 10" ac. Scala-Record 51152/53. PRODANÁ NEVĚSTA: Každý jen tu svou / V STUDNI: Arie (Blodek). with piano acc. 4/3-4. MB 8

### **POLETTI, Olga (s)**

672 10" flexible Goodson 5272/5272. TRAVIATA: Sempre libera / **DI BERNARDI**: GIOCONDA: Cielo è mar. From Fonografia Nazionale masters. Refer to the recent RC discography of Oreste di Bernardi. *Needs some extra-weight, oth.* 2-3. MB 7

### **POLLAK, Irma (s)**

Irma Polak or Pollak was born 1876 in Laibach (now Ljubljana, Slovenia). She became member of the Stadttheater Agram (now Zagreb, Croatia) where she sang a large repertoire, foremost in operetta. She died in Zagreb in 1931. She left only few recordings, among them this one, recorded in Agram 1906.

673 10" Lyrophon U.602a/643. LUSTIGE WITWE: Vilja-Lied / **ZIMMER**: FLEDERMAUS: Mein Herr Marquis. Side 1 piano acc. by **Prof. Junek**. *Small surface depressions side 2, oth. a clean* 2-3. MB 30

### **PONSELLE, Rosa (s)**

674 12" Blue HMV ABHB 3. AIDA: La fatal pietra 2p. w/ **MARTINELLI**. Previously unpublished. 2. MB 15

675 12" It. VdP DB 807. OTELLO: Salce! Salce! / Ave Maria. 2. MB 7

676 12" Red Vla 6605. VESTALE: Tu che invoco / O nume tutelar (Spontini). 2. MB 7

677 12" s/s Columbia Tricolor 49735. GIOCONDA: Suicidio!. 2-3. MB 7

678 12" s/s Columbia Tricolor 49870. Maria Mari (di Capua). alm. 2. MB 7

679 12" White HMV VB 74. Home, sweet home (Bishop) / Ave Maria (Schubert). Previously unpublished. 2. MB 8

680 12" White-label sample pressing of Columbia 98093-1/96-3. LOHENGRIN: Elsas Traum / JUIVE: Il va venir. The only known issue of these acoustic masters appeared in the US, 1951, on vinyl, in the Columbia Historical series (AF 1), when the shells were discovered and rescued while en route to destruction during one of Columbia periodic vault purges. This totally unknown shellac issue must either have been pressed in the US prior to 1951 (as by that time US Columbia no longer used shellac), or, tentatively, handled in the UK, the British branch in that case having borrowed the masters for the nonce. A unique copy? 2. OFFERS

### **PREMELČ, Mirko (b)**

We know nothing about this singer except the fact that he gave a recital together with the Wiener Sängerknaben in Ljubljana in 1928, singing songs by Schubert, Grieg and others.

681 10" Phonycord Flexible 4051. V slaščičarni (Debevec) /Sonny Boy (Jolson). 1930 Artiphon masters. 3. MB 5

### **RADFORD, Robert (bs)**

689 10" PD 3-2934. Simon the Cellarer (Hatton). *Edge-chip NTG, oth.* 2-3. MB 8

### **RAHMER, Kurt (b)**

Kurt Rahmer (1886-194?) was a member of the „Jüdischer Kulturbund“, an organization of Jewish artists during the Nazi regime, also working as a director between 1935 and 1939. It is likely that he perished in a concentration camp. He made recordings for Anker (Berlin 1913; ensemble scenes) and Homocord (Berlin 1923; solo recordings).

682 12" Anker E.9986. FIDELIO: Quartett / Quintett. w/ **MEYSEL, TOBIA, KNÖSSELER +** (side 2 only) **ZITTMANN**. *Sscrs.* 3. MB 20

### **RAINS, Leon (bs)**

683 10" CRG 12930. ZAUBERFLÖTE: O Isis und Osiris / In diesen heil'gen Hallen. 2-3/2. MB 25

**RALF, Thorsten (t)**

684 12" UK Columbia LX 646. MEISTERSINGER: Preislied 2p. w/ **BOCKELMANN, JONES, WORTHINGTON** etc., cond. by **Sir Thomas Beecham**. Recorded live at Covent Carden, 1936. 2-3. MB 7

**RANCZAK, Hildegard (s)**

685 12" Telefunken SK 1197. BOHÉME: Man nennt mich jetzt nur Mimi / TOSCA: Nur der Schönheit. 3-4/still 3. MB 4

686 12" Telefunken SK 1273. OTELLO: Ave Maria / Carmen: Arie der Micaela. 2. MB 7

687 12" Telefunken SK 1324. MIGNON: Kennst du das Land / MARTHA: Letzte Rose. 2. MB 7

**RAPHAEL, Mark (b)**

688 12" HMV C.3591. SPANISCHES LIEDERBUCH: Nun wandre, Maria / Herr, was trägt der Boden hier (Wolf). w/ piano acc. by **Gerald Moore**. 2. MB 7

**RÉGIS, Georges (t)**

690 12" PD 032074/75. FAUST: Salut demeure / BARBIERE DI SIVIGLIA: Sérénade. Uncommon. Still 3/3. MB 15

**REHKEMPER, Heinrich (b)**

691 12" G 95101. WINTERREISE: Gute Nacht / SCHÖNE MÜLLERIN: Der Neugierige (Schubert). *Short NC side 2, oth. alm.* 2. MB 10

692 12" SG 65702. PAGLIACCI: Prolog / BALLO IN MASCHERA: Ja, du warst's. 2. MB 20

693 12" SG 66007. Die beiden Grenadiere / Meine Rose (Schumann). 3 or b. MB 20

**REINHARDT, Delia (s)**

694 12" P 66867. LOHENGRIN: Euch Lüften / Elsas Traum. 2. MB 12

**REINMAR, Hans (b)**

695 2-12" Telefunken E 1589-90. WALKÜRE: Wotans Abschied und Feuerzauber 4p. 2. MB 8

**RENAUD, Maurice (b)**

696 12" Silver Vr IRCC 38. HÉRODIADÉ: Vision fugitive / ROI DE LAHORE: Promesse de mon avenir (Massenet). 2. MB 15

**RETHBERG, Elisabeth (s)**

697 12" Brunswick 50043. AIDA: O patria mia / Ritorna vincitor. 2/2-3. MB 8

**RETHY, Esther (s)**

698 12" Electrola DB 5617. ROSENKAVALIER: Ist ein Traum / Mit ihren Augen. w/ **HÖNGEN**; Orch. d. Sächs. Staatskap. cond. by **Karl Böhm**. *Sscrs, gen.* 3. MB 5

**RICCI, Fausto (b)**

699 12" Parlophon P.9259. PAGLIACCI: Prologo 2p. 3-4. MB 4

**RICHARDSON, Abby (ms)**

700 12" Fr. Columbia RFX 12. Chant Hindou (Bemberg) / Le Nil (Leroux). w/ **Volant (v) & M. Faure (p)**. 2. MB 15

**RIGAUX, Lucien (b)**

701 10¾" Odeon 97100/081. FAUST: Mort de Valentin 2p. w/ Choeur & Orch. de l'Opéra Paris. 3-4/2-3. MB 12

**RIZZINI, Adele (s)**

702 10" G&T 54272. TRAVIATA: Brindisi. w/ **PEREA** & Cori della Scala. *Pimply surface from pressing defect, scrs, gen.* 4. MB 7

**RODE, Wilhelm (b)**

703 12" ac. Odeon Rxx 80190/91. MEISTERSINGER: Schusterlied / Fliedermonolog. 3. MB 22

**ROGAČ, Žiga (b)**

704 10" Lipsia Record 1993/98. Herz, mein Herz (Volkslied) / Morgen muß ich fort von hier (Silcher). with piano acc. Sung as „S. Wang“. 3. MB 7

**ROGATCHEWSKY, Joseph (t)**

705 12" Fr. Columbia D 15010. WERTHER: Lorsque l'enfant revient / LOHENGRIN: Récit du Graal. 2. MB 7

706 12" Fr. Columbia D 15223. ORPHÉE: Recit et Air d'Orphée Acte 1 (Gluck) 2p. 2. MB 10

**ROHR, Max (t)**

707 11" H&D CS Pathé 51023/25. AUF INS METROPOL: Casinolied (Holländer) / DONNA JUANITA: Romanze (Suppé). 2-3/still 3. MB 10

708 11" H&D CS Pathé 51243/44. ZIGEUNERLIEBE: Zorika, Zorika keh'r zurück / Heckenrosenlied (Lehár). Creator. *Greying at start of side 1 of no audible consequence, therefore.* 2-3. MB 12

**ROSELLE, Anne (s)**

709 12" Red SG 73026. MADAMA BUTTERFLY: Dio madre / AIDA: Ritorna vincitor. *Sscrs, gen.* 3. MB 8

## ROST, CARL (b)

- 710 10" Polyphon 2207. Am Meer (Schubert) / Noch sind die Tage der Rosen (Baumgartner). with piano acc. *Short ND and some grey lines due to very forward recording, gen. 3/still 3*. MB 10
- 711 10" Polyphon 2289. Rote Lippen und goldnen Wein (Ritterhaus) / Mosellied (Schmidt). 3. MB 10
- 712 10" ac. Teutonia 70468. Wenn du noch eine Mutter hast / Wenn du kein Spielmann wärst (Hofmann). Janus masters. 3. MB 12
- 713 10" ac. Tip Top 638. Wenn schwarze Kittel scharenweis' / Das Bergmannskind.  $\frac{1}{2}$ " cr, oth. 3-4. MB 5
- 714 12" MRG 0942002/03. Der Nöck (Loewe) 2p. 3 or b. MB 12

## ROSWAENGE, Helge (t)

- 715 10" P 90204 . VÊPRES SICILIENNES: Als ich mein Herz Dir zugewendet / All' meine Liebe. w/ **SCHLUSNUS**. 2. MB 7
- 716 12" Decca K 23188. CARMEN: Blumenarie / AIDA: Holde Aida. 2. MB 7
- 717 12" Electrola DB 4495. BARBIER VON BAGDAD: O holdes Bild w/ **I. ROSWAENGE** / TRAVIATA: Ach, ihres Auges Zauberblick. Only record of his wife Ilonka Holndonner. 3-4. MB 5
- 718 12" Electrola DB 5563. LIFE FOR THE TSAR: Brüder, folgt mir / **STRIENZ**: Sie ahnen die Wahrheit (Glinka). Side 1 with choir. Rare, due to a short catalogue-life.  $1/2$ " scr. Side 1, oth. 3-4/3. MB 12
- 719 12" Electrola DB 5580. AIDA: Holde Aida / EUGEN ONEGIN: Wohin seid ihr verschwunden (Tchaikovsky). Rare. 2. MB 50
- 720 12" Electrola DB 5593. BORIS GODUNOV. Dimitri, Zarewitsch! (Mussorgsky) 2p. w/ **BECKMANN**. Very short catalogue life. 2. MB 40
- 721 12" Electrola EH 126. CAVALLERIA RUSTICANA: O Lola / CARMEN: Blumen-Arie. 3/2-3. MB 8
- 722 12" G 27195. OBERSTEIGER: Potpourri (Zeller) 2p. w/ **KOCHHANN**. Uncommon. 2-3. MB 15
- 723 12" G 66766. AIDA: Ich seh' dich wieder 2p.w/ **HÜNI-MIHACSEK** . 2-3. MB 7
- 724 12" G 66819. AIDA: Schon sind die Priester all' vereint 2p. w/ **LEISNER**. 2-3. MB 7
- 725 12" G 67211. FORZA DEL DESTINO: Du die verklärt im Himmelslicht / BALLO IN MASCHERA: Doch heißt dich auch ein Pflichtgebot. 3. MB 7
- 726 12" G 95451. CARMEN: Ich seh' die Mutter dort w/ **DEBITZKA** / **HÜNI-MIHACSEK**: Diese Menge im Gedränge w/ **DOMGRAF-FASSBAENDER**. 3. MB 6
- 727 12" Odeon O-6588. POSTILLON DE LONJUMEAU: Postillonlied / DON GIOVANNI: Tränen vom Freunde getrocknet. 2. MB 15
- 728 12" Telefunken F 1272. HUGUENOTS: Ich ging spazieren einst / VÊPRES SICILIENNES: O Tag des Grames. *Hardly visible patina on outer rim only, oth. 2*. MB 8
- 729 12" Fr. Decca GAH 15055. GRAF VON LUXEMBURG: Bist du's, lachendes Glück / ZIGEUNERBARON: Wer uns getraut?. w/ **DELLA CASA**. Side 1 has take 3; the RC discography and M. Smith's numerical listing of Decca records note takes 1 and 2 only. 2. MB 8

## ROUSSELIÈRE, Charles (t)

- 730 10" orig. G&T 34009. MIREILLE: O Magali (Gounod) w/ **J. ROUSSELIÈRE**. *Bumpy surface at start (needle needs some extra weight), two NRs, one grey line, gen. 4*. MB 15

## RUFFO, Titta (b)

- 731 10" Fr. DpG 7-52036. BALLO IN MASCHERA: Alla vita. 3. MB 5
- 732 10" Pink PD 2-52528. TROVATORE: Il balen del suo sorriso. *Short NC, oth. alm. 2*. MB 7
- 733 10" Pink PD 2-52529. TRAVIATA: Di provenza. 3. MB 7
- 734 10" Pink PD 2-52686. CHATTERTON: Tu sola a me rimani (Leoncavallo). 2-3. MB 10
- 735 10" s/s Fr. DpG 7-52029. Suonno e Fantasia (Capolongo). 3-4. MB 5
- 736 10" s/s Pink Span. DG 7-52030. Visione Veneziana (Brogi). 3. MB 7
- 737 10" s/s Pink Span. DG 7-52062. Oh, que m'importe? (Titta). alm. 2. MB 10
- 738 10" s/s Pink Span PD 54316. RIGOLETTO: Si vendetta. w/ **GALVANY**. 4. MB 5
- 739 10" s/s Red Span. DG 7-62013. El Guitarrico (Soriano). Still 3. MB 6
- 740 12" Pink PD 054180. HAMLET: Nega se puoi la luce (Thomas). w/ **GALVANY**. *Pimply surface, open blister, . 3*. MB 10
- 741 12" Red Vla 92505. DON GIOVANNI: Là ci darem la mano w/ **PARETO**. 2. MB 7
- 742 12" Span. DG 2-052186. L'AFRICAINNE: Adamastor, re delle acque profonde. Still 3. MB 5
- 743 12" Span. DG DB 569. HAMLET: Brindisi / Come il romilo fior. 3/alm. 2. MB 5

## RUNGE, Gertrud (s)

- 744 10" CRG 11138. WAFFENSCHMIED: Gern gäb' ich Glanz und Reichtum hin / ZAUBERFLÖTE: Duett Papageno-Papagena. w/ **LEONHARDT**. Matrix 328 I side 2 (unreported by Kelly). Still 3. MB 18
- 745 10" Zonophone X-23064/160. CAVALLERIA RUSTICANA: O süße Lilie / **KNÜPFER-EGLI**: Ave Maria (Bach-Gounod). Side 2 sung as „Ellen Normann“. Both sides issued only as green label. 3-4/4-5. MB 5
- 746 11" H&D CS Pathé 14825/26. GEISHA: Goldfischlied (Jones) / BOCCACCIO: Hab' ich nur deine Liebe (Suppé). 3. MB 12
- 747 12" MRG 15622. TRAVIATA: O laß uns fliehen / Carmen: Ich seh' die Mutter dort w/ **KUTTNER**. 3/3-4. MB 5
- 748 7" G&T 43385. MIGNON: Styrienne (Thomas). 4-5. MB 15
- 749 7" G&T 44030x. Der lustige Ehemann (Straus) w/ **LEONHARDT**. The 1902 remake. 4. MB 18

## RÜSCHE-ENDORF, Cäcilie (s)

- 750 10" GCR 2-43314/16. TANNHÄUSER: Dich teure Halle / **DESTINN**: LOHENGRIN: Einsam in trüben Tagen. alm. 3/2. MB 20

**RUSS, Giannina (s)**

751 10¾" Fonotipia 390312/462. FORZA DEL DESTINO: La vergine degli angeli / Ave Maria (Bach-Gounod). w/ **Alessandro Genesini (v)** side 2. **3-4**. MB 10

**RUSZKOWSKA, Elena (s)**

752 10" Red GCR 53568. ERNANI: Ernani involami. **3-4**. MB 15

753 3-12" White-label vinyl sample pressing of Gram Co mx 1860-62 c. AIDA: Fu la sorte dell'armi 3p. w/ **LAVIN DE CASAS**. **1-2**. MB 20

**SACK, Erna (s)**

754 10" Telefunken AK 1676. CLIVIA: Ich bin verliebt (Dostal) / Wenn sich eine schöne Frau verliebt (Sattler). **2-3**. MB 5

**SAGI-BARBA, Emilio (b)**

755 10" G&T 2-62085. DIABLO EN EL PODER: Romanza (Gaztambide). **3-4**. MB 15

756 10" G&T 2-62087. HIJAS DE EVA: Romanza (Gaztambide). Rare. **3 or b**. MB 25

**SAJO, Izso (b)**

757 10" s/s Ideal Grand Record 6765. Cserebogár, sárga cserebogár. w/ two clarinets acc. Recorded early 1905 in Budapest. *Sscrs, but no needle-wear*. **3**. MB 30

758 10" s/s Ideal Grand Record 6817. Balog Adám. w/ **Ferencz Vadász** (tárogató). Recorded early 1905 in Budapest. *Sscrs, but no needle-wear*. **3**. MB 30

759 9" H&D CS Pathé 39132/37. Te vagy a legény; Tnykody pajtás / Honvéd kesergő. Early Artistical recordings, announced. *Looks terribly scratched and greyed, but plays astonishingly well, so graded*. **3**. MB 20

**SALVATINI, Mafalda (s)**

760 12" SG 65487. MADAMA BUTTERFLY: Che tua madre / Un bel di. **3**. MB 8

**SAMMARCO, Mario (b)**

761 12" Parlophone Odeon PXO 90. RIGOLETTO: Pari siamo / STRACCIARI: ZAZÀ: Zazà, piccola zingara (Leoncavallo). Side 2 **conducted by the composer**. From Fonotipias 74132/71. **2**. MB 20

**SARI, Ada (s)**

762 12" Cz. HMV ES 459. An der schönen blauen Donau (Strauß) / Variazioni (Mozart). Orch. cond. by **Karl Alwin**. **alm. 2**. MB 8

**SAROBE, Celestino (b)**

763 12" Fr. P 66898. PAGLIACCI: Prologo / OTELLO: Credo. **2**. MB 12

**SAUER, Franz (bs)**

764 10" Artiphon 03784/85. Die Uhr (Loewe) / Wanderlied (Schumann). **4**. MB 5

**SCAMPINI, Augusto (t)**

765 12" Red PD 054179. HUGUENOTS: Dille ancor (Meyerbeer) . w/ **C. DAVID**. *Discoloration patch (from heat?) gives light „swishes“, oth. a clean disc, so called*. **3**. MB 18

**SCHEIDL, Theodor (b)**

766 12" P 95213. Heinrich der Vogler (Loewe) / Die beiden Grenadiere (Schumann). Piano acc. **Michael Raucheisen**. **2**. MB 8

**SCHELLENBERG, Arno (b)**

767 12" DGG 68303. Der Maikäfer / Hochzeitslied (Loewe). Piano acc. **Ferdinand Leitner**. **2**. MB 8

**SCHENNEBERG, Eliette (ms)**

768 12" Fr. Columbia LFX 690. Trois Psaumes (Honegger) 2p. Piano acc. **by the composer**. **2**. MB 15

**SCHEY, Hermann (b)**

769 10" Ultraphon A 414. Alte Landsknechte (Herrmann) 2p. Uncommon. **3/2-3**. MB 10

**SCHIØTZ, Aksel (t)**

770 12" HMV DB 10511. Quichotte à Dulchinée (Ravel) 2p. Piano acc. **Herm. D. Koppel**. **2**. MB 8

**SCHIPA, Tito (t)**

771 10" s/s Red Span. DG 7-52122. FAUST: Salve, dimora. **Still 3**. MB 5

772 10" s/s Red Span. DG 7-52123. LUCIA DI LAMMERMOOR: Tu che a Dio. **Still 3**. MB 5

773 10" s/s Red Span. DG 7-52125. RIGOLETTO: Ella mi fu rapita. **3-4**. MB 5

774 10" s/s Red Span. DG 7-52217. MANON: Il sogno (Massenet). **3 or b**. MB 7

775 10" s/s Red Span. DG 7-62051. Princesita (Palomero y Padilla). **Still 3**. MB 5

776 12" s/s Red HMV 2-052150. MANON: Ah! dispar vision (Massenet). **2-3**. MB 7

777 12" White Span. Voz de su amo DM 1038. Le campane di San Giusto (Arona) / Mamma mia, che vó sape (Nutile). **3**. MB 6

778 12" White-label vinyl sample pressing of Vr mx C 42942-2. RIGOLETTO: Ella mi fu rapita. Unpublished. **1-2**. MB 15

### SCHIPPER, Emil (b)

- 779 12" Electrola EJ 435. LOHENGRIN: Dank, König, dir! / O König. Orch. d. Staatsoper Wien, cond. by **Karl Alwin**. 2. MB 10  
780 12" Electrola EJ 490. IPHIGÉNIE EN AULIDE: O Artemis! / O du, die ich so innig liebe (Gluck). Orch. d. Staatsoper Wien, cond. by **Karl Alwin**. 2. MB 15  
781 12" Cz. HMV ES 587. RIGOLETTO: Gleich sind wir beide / Feile Sklaven! 2. MB 10

### SCHMEDES, Erik (t)

- 782 10" G&T 3-42414/61. RIENZ! Erstehe, hohe Roma, neu! / NORMA: Was mich kräftigt und beseelt (Bellini) w/ Chor der k.k.Hofoper Wien. 4/alm. 4. MB 6  
783 10" CRG 3-42945/46. RHEINGOLD: Erzählung des Loge / TRISTAN UND ISOLDE: Vision. Uncommon. 3 or b. MB 15  
784 10" orig. G&T 42820. LOHENGRIN: Höchstes Vertrauen. 1902 recording. 3 or b. MB 25

### SCHMEDES, Paul (t)

- 785 12" Anker 5185\*. MESSIAH: Alle Thale (Händel) / Der Wald wird dichter (Goldmark). Only record on 78 of the Goldmark song. *NH at start side 2, oth.* alm. 2/2-3. MB 30

### SCHMITT-WALTER, Karl (b)

- 786 10" Telefunken A 1919. Mondnacht / Stille Tränen (Schumann). Piano acc. **Michael Raucheisen**. 2-3. MB 7

### SCHNEIDER-PLAUT, Maria (s)

- 787 10" SG 13514. DREIMÄDERLHAUS: Lied aus Wien / Unter einem Fliederbaum (Schubert-Berté). w/ **MARCKS**. 4/3-4. MB 4

### SCHOCK, Rudolf (t)

- 788 12" Electrola DB 11546. ZAUBERFLÖTE: Bildnis-Arie / COSÍ FAN TUTTE: Der Odem der Liebe. Takes 2 & 3 respectively. 2. MB 7

### SCHÖFFEL, Josef (t)

- 789 12" SG 15974. TANNHÄUSER: Romerzählung 2p. alm. 2. MB 20

### SCHÖNE, Lotte (s)

- 790 12" HMV DB 1562. LUSTIGE WEIBER VON WINDSOR: Nun eilt herbei (Nicolai ) 2p. Orch. cond. by Leo Blech. 2/alm. 2. MB 8  
791 12" Red Vla 7112. ZAUBERFLÖTE: Arie der Pamina / COSÍ FAN TUTTE: Schon als Mädchen. Side 1 has mx CLR 3794-2, different from Electrola EJ 262 or Gramola ES 457. 2. MB 8

### SCHORR, Friedrich (b)

- 793 12" Electrola EJ 693. MEISTERSINGER: Aha: Da streicht die Lene schon ums Haus / Quintett w/ **SCHUMANN, MELCHIOR, PARR & WILLIAMS**, LSO, cond. by **John Barbirolli**. 2-3. MB 5  
794 12" ac. GR 65621. FLIEGENDER HOLLÄNDER: Wie aus der Ferne / Versank ich jetzt w/ **KURT**. 2. MB 40

### SCHRAMM, Hermann (t)

- 795 10" G&T 3-42644. BETTELSTUDENT: Loblied der Polin. with piano acc. 3. MB 20  
796 12" ac. Homocord 8195. LACHENDER EHEMANN: Weinlied (Eysler) / a) Mahnung (Hermann) b) Bonn (Bungert). Uncommon. Still 4/2-3. MB 8  
797 12" ac. Parlophon P.316. FLIEGENDER HOLLÄNDER: Steuermannslied / UNDINE: Vater, Mutter (Lortzing). 2-3/2. MB 12

### SCHRÖDTER, Fritz (t)

- 798 10" orig. G&T 42883. TROVATORE: Arioso. 1902 recording. 4-5. MB 12

### SCHRÖTER, Erich (t)

- 799 10" Polyphon 12320. Tief im Böhmerwald / Sei begrüßt, du mein schönes Sorrent (Waldmann). 3-4/4-5. MB 4

### SCHUBERT, Richard (t)

- 800 12" SG 65589. GÖTTERDÄMMERUNG: Erzählung des Siegfried 2p. 2-3. MB 8

### SCHÜLLER, Willy (t)

- 801 10" Beka-Grand 11992/12194. ZIGEUNERBARON: Wer uns getraut w/ **MARA / G. BRAUN**: WALZERTRAUM: Leise, ganz leise (Straus). 2-3/3-4. MB 6  
802 10" Lyrophon 444/45. WALKÜRE: Liebeslied / FREISCHÜTZ: Durch die Wälder. *Rough start aff. announcement both sides and piano prelude side 1, oth.* 4-5/4. MB 5

### SCHUMANN, Elisabeth (s)

- 803 12" HMV DB 1844. a) Heidenröslein b) Lied im Grünen / Du bist die Ruh' (Schubert). Piano acc. by **Karl Alwin**. alm. 2. MB 5

### SCHUMANN-HEINK, Ernestine (c)

- 804 12" Silver Vr IRCC 93. PROPHÈTE: O prêtres de Baal / SAPHO: O ma lyre immortelle (Gounod). POM (Vr 88094 & 88212). alm. 2. MB 15

### SCHÜTZENDORF, Leo (bs)

- 805 12" PoW Telefunken E 197. BARBIERE DI SIVIGLIA: Die Verleumdung / Einen Doktor meinesgleichen. 2. MB 7



Hermann Schramm on the phone – with himself ...



### SCHWARZ, Hans (t)

806 10" SG 20504. Valencia (Padilla) / Kleiner Marzipansoldat (Nicholls). 2-3. MB 7

### SCHWARZ, Joseph (b)

807 12" Parlophon P.336. ROI DE LAHORE: O casto fior / HÉRODIADÉ: Vision (Massenet). Scarce. 4. MB 8

808 12" Parlophon P.332. GUILLAUME TELL: Gebet / ZAR UND ZIMMERMANN: Sonst spielt' ich. 2-3/4-5. MB 5

809 12" Red SG 72661. GUILLAUME TELL: Gebet / **HUTT**: Ha, wohin? w/ **SCHLUSNUS**. Uncommon. *Long NR luckily gives hardly any tics side 1, oth.* 2-3. MB 20

810 12" s/s Red SG 72530. CONTES D'HOFFMANN: Arie des Dapertutto (Offenbach). 2-3. MB 7

### SCHWARZ, Vera (s)

811 12" ac. Odeon Rxx 80823/24. PAGLIACCI: Duett Nedda-Silvio 2p. w/ **B. ZIEGLER**. *Needle-cut gives two tics side 2, oth.* 3 or b. MB 15

812 12" ac. Odeon Rxx 76240/41. ERNANI: Ernani, rette mich / DIE TOTEN AUGEN: Lied der Psyche (d'Albert). *Two open blisters side 2, oth.* 2-3. MB 25

813 12" ac. Odeon Rxx 80829/30. SEGRETO DI SUSANNA: Gedenkst du, Geliebte (Wolf-Ferrari) / BOHÈME: Duett Mimi-Marcel. w/ **B.ZIEGLER**. Uncommon. 2-3. MB 30

814 12" ac. Grey P 85306. AIDA: Zu dir führt mich ein ernster Grund 2p. w/ **BOHNEN**. Uncommon. *Bad NR has left sev. NHs side 2, oth.* 3 or b. MB 6

### SCHWARZKOPF, Elisabeth (s)

815 4-12" Columbia LX 1423-26. 13 Songs (Medtner) 8p. Piano acc. **by the composer**. 2. MB 35

### SEEFRIED, Irmgard (s)

816 12" DGG 72351. IL RE PASTORE: L'ameró saró costante / Non temer, amato bene, KV 490 (Mozart). w/ **Schneiderhan (v)**, WSO cond. by **Ferdinand Leitner**. 2. MB 7

### SEINEMEYER; Meta (s)

817 12" Odeon O-7837. Liebesfeier (Weingartner) / O lieb', solang du lieben kannst (Liszt). 2. MB 10

### SEMBACH, Johannes (t)

818 10" GCR 4-42371/72. FLIEGENDER HOLLÄNDER: Steuermannslied / LOHENGRIN: Schwanenlied. *NR at end side 1, oth.* 3 or b/2-3. MB 10

819 12" Columbia Tricolor A 5889. MEISTERSINGER: Preislied / LOHENGRIN: Abschied. 2. MB 10

820 12" ac. Columbia A 5842. FREISCHÜTZ: Durch die Wälder / SIEGFRIED: Nothung! Nothung!. 2-3/3. MB 10

### SENIUS, Felix (t)

821 12" Anker E.9437. L'ELISIR D'AMORE: Una furtiva lagrima / DON GIOVANNI: Il mio tesoro. w/ Blüthner-Orch., cond. by **Bruno Weyersberg**. Alm.2. MB 35

### SERRA, Daniele (t)

822 10" ac. DG R 6677. Così piange Pierrot / Come la bambola (Bixio). 3 or b. /2-3. MB 10

### SHEVELEV, Nikolai (b)

823 10" CRG 3-22823/4/22017. L'AFRICAINÉ: Ballad of Nelusco / **SIBIRYAKOV**: FAUST: Rondo. 4. MB 15

824 12" MRG 022136/023049. KHOVANTSHINA: Aria Shakloviti / **PETROVA-ZVANTSEVA**: Air (Mussorgsky). Rare. 3-4. MB 25

### SIBIRYAKOV, Lev (bs)

825 10" RAOG 2653/58. BOHÈME: Air of Collin / LAKMÉ: Stances (Delibes). *Sscrs and much rubbing, esp. side 2, but no needle-wear, gen.* 3/still3. MB 25

826 10" CRG 4-22171/216. Song (Gartenberg) w/ choir / **BLYANIN** (bs): Song (Navrotsky). Rare. 3/3-4. MB 25

827 10" Zonophone X-2-62667/82. IOLANTA: Air of the king / **VOPRINSKI**: EUGEN ONEGIN: Air of Gremin (Tchaikovski). 3-4. MB 20

828 12" Orpheon-Record 2809/10. Somnie (Glinka) / Ave Maria (Bach-Gounod). w/ **Manassevitch (v)** & **Butkovsky (vc)**. Obviously no pirated recordings (signature „Orfeon“ is visible in wax on both sides). Very attractive label. *NH both sides each and two NRS side 1, pimply pressing, gen.* 4. MB 25

### SIEGLITZ, Georg (bs)

829 10" G&T 2-42676x/3-42240. Im tiefen Keller (Fischer) / Das Herz am Rhein (Hill). Side 1 sung unaccompanied. 3-4/4. MB 35

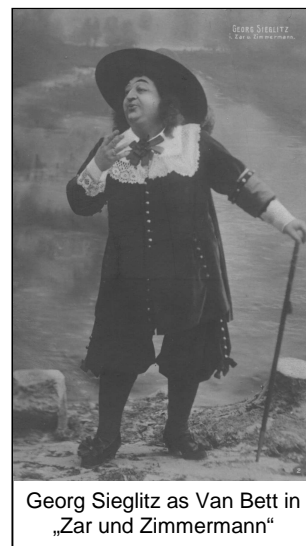
### SINIMBERGHI, Gino (t)

830 12" DGG 67536. DON PASQUALE: Laß es, ach laß es mich hören w/ **BERGER** / Romanze (Donizetti). 2. MB 4

### SLEZAK, Leo (t)

831 10" CRG 4-42227/28. Die Lotusblume (Schumann) / Das Veilchen (Mozart). 3/still 3. MB 6

832 10" CRG 4-42242/43. Am Meer / SCHÖNE MÜLLERIN: Wohin? (Schubert). 4. MB 5



Georg Sieglitz as Van Bett in „Zar und Zimmermann“

## SLEZAK, Leo (cont.)

- 833 10" G&T 42854. SIEGFRIED: Schmiedelied. His only recording from „Siegfried“, made in 1902. *A very clean* **2-3**. MB 50  
834 10" GCR 2-44427/28. HUGUENOTS: Septett / TANNHÄUSER: Septett. w/ **MAYR, STEHMANN, PREUSS** etc. **alm. 2/3-4**. MB 10  
835 10" GCR 3-42840/41. RIGOLETTO: Ach wie so trügerisch / JUIVE: Großer G'tt, hör' mein Fleh'n. **3 or b**. MB 8  
836 10" PD 2-42592/3-42459. GUILLAUME TELL: O Mathilde / JUIVE: Recha, als G'tt. 1903 recording side 1. *Several lt. NRs side 2,* **3/3-4**. MB 8  
837 10" SG 20138. BALLO IN MASCHERA: Ha, welche Wonne / Barcarole. **Still 3**. MB 5  
**1170** 10" SG 62420. MANON: Ich bin allein / SCHÖNE MÜLLERIN: Wohin? (Schubert). Piano acc. **Bruno Seidler-Winkler** side 2. **Still 3/2-3**. MB 7  
838 10" SG 62428. Lenz (Hildach) / Es muß ein Wunderbares sein (Liszt). Piano acc. **Bruno Seidler-Winkler**. **alm. 2**. MB 10  
839 10" Zon-O-Phone X-22041. MANON: Flieh', o flieh'. 1902 recording. *1½" sec. crack, oth.* **4-5**. MB 5  
840 10" orig SG 62427. Lockruf (Rückauf) / Ich trage meine Minne (Strauss). Piano acc. **Bruno Seidler-Winkler**. **2-3**. MB 10  
841 10" orig. G&T 2-42501. HUGUENOTS: Ihr Wangenpaar. 1902 recording. **4**. MB 10  
842 10¾" Odeon X 25990/91. OTELLO: Ora e per sempre, addio / L'AFRICAIN: Land, so wunderbar. **3/4**. MB 7  
843 11" H&D CS Pathé 38100/01. TROVATORE: Stretta / RIGOLETTO: O wie so trügerisch. **3**. MB 15  
844 12" P 19924. Der Nußbaum / Mondnacht (Schumann). **2**. MB 7  
845 12" SG 65776. Heimliche Aufforderung (Strauss) / O komm im Traum (Liszt). Piano acc. **Bruno Seidler-Winkler**. **2-3**. MB 10  
846 12" PoW DGG 95162. PAGLIACCI: Hüll' dich in Tand / OTELLO: Othellos Tod. **2**. MB 7

## SOLTI, Hermin (s)

- 847 11" H&D CS Pathé 52463/66. A teosteeep / Hogy van a Pali Bacsi. **2-3**. MB 12

## SOOMER, Walter (b)

- 848 12" MRG 042413/14. TANNHÄUSER: Gesang Wolframs und Pilgerchor 2p. w/ **RUNGE** & Chor der kgl. Hofoper. Gertrud Runge not mentioned on label. **2-3**. MB 10  
849 12" MRG 042415/16. WALKÜRE: Wotans Zorn / Feuerzauber. **2-3/3**. MB 8  
850 12" MRG 042425/26. FLIEGENDER HOLLÄNDER: Wie aus der Ferne / MEISTERSINGER: Patengesang des Sachs. **3**. MB 7  
851 10" CRG 4-42551/52. MEISTERSINGER: Wahn-Monolog 2p. *Open blister side 2, oth.* **3**. MB 15

## SOOT, Fritz (t)

- 852 12" P 66728. LOHENGRIN: Atmest du nicht / FIDELIO: In des Lebens Frühlingstagen. **2-3**. MB 10

## SPIEGEL, Magda (c)

Magda Spiegel (1887-1942), born in Prague, was the leading contralto in Frankfurt am Main between 1917 and 1935. Being Jewish, she was murdered at Auschwitz. Six sides for three different labels (Odeon, Homocord and Vox, Berlin 1922-23) are known to document her voice. All of these are of outstanding rarity.

- 853 12" ac. Homocord B.8445. TROVATORE: Lodernde Flammen / RIENZI: In seiner Blüte (Wagner). w/ Staatsopern-Orch., cond. by **Carl Ehrenberg**. Rare. *One grey line side 1, lt. sscr. side 2, gen. a clean.* **3 or b**. MB 125

## SPINA, Hina (s)

- 854 12" lt. VdP DB 1503. MANON: Addio, picciol desco / TROVATORE: D'amor sull'ali rosee. **2**. MB 7

## SPIWAK, Juan (t)

- 855 12" ac. Odeon AA 56989/57344. FAUST: Cavatine / **VOGELSTROM**: FRA DIAVOLO: Ich zählte Freunde (Auber). **3/3-4**. MB 25

## STAMLER, Henri (b)

- 856 10" Black. Zon-O-Phone X-2082. GUILLAUME TELL: Prière. *One or two grey lines, oth.* **3**. MB 20

## STEINER, Franz (b)

- 857 12" Anker 9411. Die Mainacht (Brahms) / SCHÖNE MÜLLERIN: Der Neugierige (Schubert). **3/still 3**. MB 12

## STRACCIARI, Riccardo (b)

- 858 10" s/s Columbia Tricolor 77085. BALLO IN MASCHERA: Alla vita. **2-3**. MB 7  
859 10¾" Fonotipia 92428/29. FAVORITE: Vien Leonora / A tanto amor. **2-3**. MB 18  
860 10¾" Fonotipia 92458/59. TRAVIATA: Di Provenza / TANNHÄUSER: Oh tu, bell'astro incantator. **2-3**. MB 18  
861 12" Columbia D 18061. OTELLO: Gran duetto di giuramento w/ **FUSATI** / DON GIOVANNI: La ci darem la mano w/ **RETTORE**. *NC side 1, oth.* **still 3/3**. MB 5  
862 12" Fonotipia 74183/84. BARBIERE DI SIVIGLIA: Largo al faktotum / PAGLIACCI: Prologo. **4-5**. MB 5  
863 12" s/s Regal 49333. Élégie (Massenet). w/ **Jacobsen (v)** & **Hauser (p)**. *Few sscr., gen.* **3 or b**. MB 7  
864 12" Span. Regal RS 5517. TROVATORE: Il balen / BALLO IN MASCHERA: Eri tu. Both sides take 1. **2**. MB 7

## STREIT, Mme (ms)

- 865 7" Black. Zon-O-Phone 1192. MIGNON: Connais-tu le pays./ CARMEN: L'amour est enfant de bohème. **4-5**. Plays well with narrow stylus. MB 20



Franz Steiner

### STRIENZ, Wilhelm (bs)

866 12" Electrola DB 5594. BORIS GODUNOV. Abschied, Gebet und Tod des Boris (Mussorgsky) 2p. Rare, due to short catalogue life (wartime-recording). 2. MB 35

### STÜCKGOLD, Grete (s)

867 12" Vox \*02194. COSÍ FAN TUTTE: O verzeih', Geliebter / FAUST: Ha, welch' Glück. Uncommon. *Sscr's side 1 and lt. greying side 2, gen. 3*. MB 30

### STÜNZNER, Elisa (s)

868 12" Blue SG 95023. MADAMA BUTTERFLY: Weh mir / TOSCA: Gebet. 3. MB 7

### SUPERVIA, Conchita (ms)

869 3-10" Parlophone-Odeon RO 20117-19. Seven Popular Spanish Songs (de Falla) 6p. Piano acc. **Frank Marshall**. 2. MB 25

### SVED, Alexander (SVÉD, Sándor) (b)

870 12" Cetra BB 25203. RIGOLETTO: Cortigiani / GUILLAUME TELL: Resta immobile. 2. MB 8

871 12" G 35039. RIGOLETTO: Pari siamo / Cortigiani. Orch. cond. by **Clemens Krauss**. *Harmless ULC side 1, oth. 3*. MB 4

### SZABÓ, József (b)

József Szabó was born 1857 in Miskolc (Hungary). He had a successful career as singer and actor likewise. Eventually he emigrated to the USA where his few recordings were made. He died in 1929 in New York.

872 10" s/s Sun Record 44374. Jön a daru csongoradi. Very rare label (ca. 1906). *1" inaud. patina, greyed*. 4-5. MB 10

873 10" s/s Zon-O-Phone 3709. 1. Irtam egy levelet 2. Édes anyám nem tudok elaludni 3. Édes anyám csak az a kérésem. *Rough start*, 4. MB 8



### SZABÓ, Lujza (s)

874 10" HMV HU 34. HUNYADI LASZLO: La Grange Ária (Erkel) / CREMONAI HEGEDŰS: Madárdal (Hubay). 3. MB 7

### TAGLIABUE, Carlo (b)

875 12" P 67831. TROVATORE: Il balen / BALLO IN MASCHERA: Eri tu. 2. MB 7

876 12" It. VdP DB 11303. PURITANI: Or dove fuggo io mai / ERNANI: Oh de' verd'anni miei. 2. MB7

### TAGLIAVINI, Ferruccio (t)

877 12" Cetra BB 25022. FALSTAFF: Dal labbro il canto / SONNAMBULA: Prendi l'anel ti dono. Wrong label side 1. 2-3. MB 7

### TALÉN, Bjørn (t)

878 10" Kristall 6071. CONTES D'HOFFMANN: Lied vom Kleinzack / BOHÈME: Rudolf-Arie. 3. MB 7

879 10" Kristall 6072. RIGOLETTO: Freundlich blick' ich / O wie so trügerisch. 3. MB 7

880 12" Vox \*03026. SIEGFRIED: Schmiedelied / WALKÜRE: Liebeslied. 4-5/3-4. MB 5

881 12" Vox \*03178. LOHENGRIN: Gralserzählung / Nun sei bedankt. alm. 3/2-3. MB 10

882 12" Vox \*03179. MEISTERSINGER: Preislied / Am stillen Herd. 4/still 3. MB 5

883 12" Vox \*04025. FORZA DEL DESTINO: Solenne in quest'ora / OTELLO: Si, pel ciel w/ **IWANZOFF**. 3. MB 15

884 12" Vox \*3091. TOSCA: E lucevan le stelle / Recondita armonia. Still 3/3. MB 8

### TALEXIS, Amelia (s)

885 10¾" Odeon de Luxe 60561/86. PROPHÈTE: Mon fils! Je n'en ai plus! / A la voix de ta mère (Meyerbeer). w/ **DUBOIS**. 4. MB 10

### TAMAGNO, Francesco (t)

886 10" Red G&T 52676. ANDRÉA CHENIER: Improvviso (Giordano). Bright label. 3-4. MB 35

887 12" Lt. Green G&T 052102. OTELLO: Ora e per sempre addio sante memorie. Creator. 3. MB 35

888 12" Red G&T 052068. OTELLO: Morte d'Otello. Creator. 4 (plays well). MB 18

889 12" s/s Green G 78506. OTELLO: Morte d'Otello. Creator. Alm.2. MB 20

### TANNERT, Karl (b)

890 12" SG 19448. ZAR UND ZIMMERMANN: Sonst spielt' ich / NACHTLAGER VON GRANADA: Ein Schütz' bin ich (Kreutzer). alm. 2. MB 15

### TASSINARI, Pia (s)

891 12" HMV DB 1933. FAUST: Jewel song 2p. (in Italian). 2. MB 8

### TAUBER, Richard (t)

892 12" Odeon O-8375. Die Uhr / Tom der Reimer (Loewe). 2. MB 7

893 12" ac. Odeon Lxx 80962/63. ROSENKAVALIER: Italienische Arie des Sängers / WALKÜRE: Liebeslied. 3. MB 5

894 12" ac. Odeon Lxx 80972/73. MIGNON: Leb' wohl, Mignon / Wie ihre Unschuld. alm. 2/3 or b. MB 7

895 12" ac. Odeon Rxx 80082/83 Morgen (Strauss) / Liebesfeier (Weingartner). Matrixes xxB 6740/42. 2-3. MB 7

**TEBALDI, Renata (s)**

896 12" . Fonit 22002. ANDREA CHÉNIER: La mamma morta / WALLY: Ebben, ne andrò lontano (Catalani). 1-2. MB 10

**TESCHEMACHER, Margarete (s)**

897 12" Electrola DB 4675. ARABELLA: Aber der Richtige w/ **BEILKE** / Das war sehr gut, Mandryka (Strauss). 2. MB 5

898 12" Electrola DB 5598. PEER GYNT: Solvejgs Wiegenlied / Solvejgs Lied (Grieg). 2. MB 12

899 12" Electrola DB 5636. FORZA DEL DESTINO: Die Königin der Engel / BALLO IN MASCHERA: Der Tod sei mir willkommen. *Damaged label side 2, oth.* 2. MB 12

**TESSANDRA, Laure (c)**

900 12" Odeon 123014. SAMSON ET DALILA: Printemps qui commence / Amour, viens aider. 2. MB 10

**TETRAZZINI, Luisa (s)**

901 12" Pink MRG 2-053056. LAKMÉ: Bell Song (Delibes). alm. 2. MB 7

902 12" Pink PD 053141. RIGOLETTO: Caro nome. 3-4. MB 5

903 12" Red Vla 88294. LAS HIJAS DEL ZEBEDEO: Carceleras (Chapi). Scarce. *NR on label only, oth.* alm. 2. MB 10

**TEYTE, Maggie (s)**

904 10" HMV DA 1810. Dans les ruines d'une abbaye (Fauré) / Plaisir d'amour (Martini). Piano acc. **Gerald Moore**. 2. MB 4

**THILL, Georges (t)**

905 12" Fr. Columbia LFX 220. WALKÜRE: O glaive promis / Siegmund suis-je w/ **G.MARTINELLI**. 2. MB 7

906 12" Fr. Columbia LFX 274. IPHIGÉNIE EN AULIDE: Unis dès ma plus tendre enfance / ABENCERAGES: Suspendez à ces murs (Cherubini). 2. MB 7

907 12" Fr. Columbia LFX 37. Pensée d'automne (Massenet) / Ninon (Tosti). 2. MB 7

**TIRARD, Charlotte (s)**

908 12" Fr. P 566024. CINQ-MARS: Cantilène (Gounod) / CID: Pleurez, pleurez mes yeux (Massenet). 2. MB 15

**TIRMONT, Edmond (t)**

909 10¼" Odeon 111098/257. SIRE DE VERGY: Valse (Terrasse) / Dernière Chanson (Fragson). *NH side 1, destroyed grooves at start side 2, .* alm. 3/4-5. MB 4

**TONINELLO, E. (s)**

910 10" ac. Columbia E 2281. HUGUENOTS: Finale IV. Atto 2p. w/ **TEGONINI**. 2-3/still 3. MB 7

**TORMA, Zsiga (b)**

911 11" H&D CS Pathé 39230/31. JÁNOS VITÉZ: Bago első dala (Kacsoh) / Ni-ni-ni-ni. Announced, from early Artistical Record Cylinders. *Greyed on forward spots side 1, but plays without distortion, gen.* 3-4. MB 10

**TREPTOW, Günther (t)**

912 12" Imperial 014023. WALKÜRE: Siegmunds Liebeslied / MEISTERSINGER: Preislied. 2. MB 7

913 12" PoW Imperial 014027. PAGLIACCI: Hüll' dich in Tand / Nein, bin Bajazzo nicht bloß!. alm. 2. MB 6

**URAY, Blanka (s)**

914 10" SG 5-13426/3-14451. Mikor az est mesélni kezd (Reményi) / ZSUZSI KISASSONY: Romeo és Julia (Kálmán) w/ **BUDAI**. 4-5. MB 5

**URBANO, Umberto (b)**

915 10" Parlophon B.12081. Occhi di Fata (Denza) / Serenade espagnole (Ronald). alm. 2. MB 10

916 12" Red SG 73079. BALLO IN MASCHERA: Eri tu / Alla vita. alm. 2. MB 18

**URLUS, Jacques (t)**

917 11" H&D CS Pathé 15754/54603. WALKÜRE: Liebeslied / **VOGELSTROM**: LOHENGRIN: Abschied. alm. 2. MB 25

918 12" SG 65476. AIDA: Holde Aida / **KURT**: O Vaterland. *Some closed blisters, oth.* alm. 2. MB 30

**URSULEAC, Viorica (s)**

919 12" Siemens Spezial 68125. CAPRICCIO: Schluß-Szene (Strauss) 2p. w/ Bayr. StO, cond. by **Clemens Krauss**. *Creator cast.* 2. MB 8

**VALLIN, Ninon (s)**

920 12" Pathé Art X.7167. NOZZE DI FIGARO: Récit et Air de Suzanne / DON GIOVANNI: Air de Zerline. 2. MB 12

921 12" Pathé Art X.7226. Panis Angelicus (Franck) / Voici la Noël (Tiersot). w/ **M. Vadon (org)**. 2-3. MB 8

922 12" Pathé X.90.031. CARMEN: Air des cartes / Les tringles des sistres. 2-3. MB 10

923 12" Pathé Art X.7233. LE ROI D'YS: Margared, o ma soeur (Lalo) 2p. w/ **SIBILLE**. Scarce. 1-2. MB 12

924 12" Odeon 123709. NORMA: Casta diva / MEFISTOFELE: L'altra notte. 2. MB 7

**VAN BOSCH, Emile (b)**

925 12" ac. Red Odeon AA 58165/66. ZWERVER: Bygeloofslied (Morris) / VOGELHÄNDLER: Lied van Grootva (Zeller). 4. MB 4

### VAN ENDERT, Elisabeth (s)

- 926 10" SG 13268. Geleitet durch die Welle / Wunderschön, prächtige (Marienlieder). **3**. MB 6  
927 10" SG 13511. BOCCACCIO: Beim Liebchen / Ein Stern zu sein (von Suppé). w/ **BÖTEL & HEYER**. **alm. 3**. MB 5  
928 10" SG 13988. Gretel (Pfitzner) / Niemand hat's gesehn! (Loewe). Piano acc. **Bruno Seidler-Winkler**. Rarely recorded songs. **2-3/3 or b**. MB 12  
929 10" SG 13992. Röselein, Röselein! / Mondnacht (Schumann). Piano acc. **Bruno Seidler-Winkler**. *Blasting on first note side 1, oth.* **3-4**. MB 5  
930 11" H&D CS Pathé 54535/36. CARMEN: Arie der Micaela / Wiegenlied (Humperdinck). **4**. MB 6  
931 12" ac. Homokord 50088/205. LOHENGRIN: Finale des 1. Actes w/ **SCHÖFFEL** & Berliner Hofopernchor / **KUTTNER**: BELLE HÉLÈNE: Das Urteil des Paris (Offenbach). **4-5**. MB 5  
932 12" ac. Kalliope 4050\*. WAFFENSCHMIED: Er schläft (Lortzing) / Carmen: Arie der Micaela. Anker masters. *Beautiful copy.* **2**. MB 15  
933 12" ac. P 15746. FLEDERMAUS: Ein seltsam Abenteuer w/ **HANSEN & BÖTEL** / Uhren-Duett w/ **BÖTEL**. **alm. 2**. MB 12  
934 12" Red SG 72565. TRAVIATA: Duett 2. Akt 2p. w/ **J. SCHWARZ**. **2**. MB 20

### VAN GORDON, Cyrena (c)

- 935 12" Columbia Exclusive Artist A 6221. ORFEO ED EURIDIVE: Che farò (Gluck) / AIDA: L'abborrita rivale. **2**. MB 7

### VAN ROOY, Anton (b)

- 936 12" Pink PD 032079. CARMEN: Toreador Song. *A beautiful.* **2**. MB 30  
937 12" s/s Pink PD 042169. LOHENGRIN: Address of Telramund. **2-3**. MB 20  
938 12" s/s White-label. Gram. Co. sample of 042166. TANNHÄUSER: Als du in kühnem Sange. **2**. MB 35

### VAVICH, Mikhail (bs)

Mikhail Vavich (1881-1930) was known in Russia as interpreter of operetta and romances. After the revolution he toured Europe and the USA where he became a silent-movie actor in Hollywood after 1925.

- 939 10" Zonophone X-3-62131/32. Song (Borisov) / Romance (Vavich). **Still 3/3**. MB 30

### VEZZANI, César (t)

- 940 12" DG W-846. JUIVE: Rachel quand du Seigneur / Dieu que ma voix tremblante. **2-3**. MB 20

### VIGNAS, Francesco (t)

- 941 10 3/4" Fonotopia 39131/36. LORENZA: Ecco mia giovinezza (Mascheroni) / AIDA: Celeste Aida. **4-5**. MB 5

### VOGELSTROM, Fritz (t)

- 942 11" H&D PL Pathé 60029. CAVALLERIA RUSTICANA: Siciliana / HUGUENOTS: Auftritt des Raoul. *Pimply surfaces, two open blisters side 2.* **2-3/3**. MB 18  
943 12" Parlophon P.375. AIDA: Schlußduett 2p. w/ **DENERA**. **3-4**. MB 6  
944 12" Beka-Meister 1194/95M. SIEGFRIED: Schmiedelied / Waldweben. *Repaired NH side 1, oth.* **2-3**. MB 8  
945 12" ac. Homocord B.8052. FREISCHÜTZ: Durch die Wälder 2p. *Many sscr's, therefore.* **4**. MB 5  
946 12" ac. Homokord 8053. PAGLIACCI: Jetzt spielen / MEISTERSINGER: Am stillen Herd. Wrong labels both sides, stickers give correct information only for side 1, side 2 is given as „Winterstürme!“ **2-3**. MB 15  
947 12" ac. Parlophon P.1291. TOSCA: Die zarten Hände / Und es blitzen die Sterne. *NC gives two „swishes“ side 1, oth.* **3**. MB 7  
948 12" ac. Parlophon P.375. AIDA: Final-Duett 2p. w/ **DENERA**. *A perfect.* **1-2**. MB 15

### VÖLKER, Franz (t)

- 949 12" Fr. P 95161. MEISTERSINGER: Preislied / Fanget an. **alm. 2**. MB 5

### VON CATOPOL, Elise (s)

- 950 12" ac. Parlophon P. 394. FAUST: Quartett w/ **VON CHAVANNE, VOGELSTROM & ZADOR** / WILDSCHÜTZ: Quartett w/ **VON CHAVANNE, RÜDIGER & ZADOR**. Ensemble is labeled „Ensemble der Kgl. Dresdner Hofoper“. We were able to identify the singers by comparing these recordings with the Wildschütz Quartet on Gramophone 2-44440 (Wedekind, von Chavanne, Rüdiger & Trede). Hans Rüdiger and Irene von Chavanne are easily recognizable, as is Zador by listening to any of his multiple recordings. The main difficulty lies in identifying the very good soprano. When the Trovatore Miserere from the same recording session turned up, comparison was possible with Polydor 65750, where Elise von Catopol sings with Carl Fischer-Niemann – obviously colour of voice and interpretation is too similar to the Parlophon version to be by another singer. These recordings are particularly important because of the contribution of Hans Rüdiger, of whom only the ensemble recordings on Gramophone 2-44439/40 were known so far. The Parlophon sides show him in a much better light and reveal an attractive lyric tenor not unlike the voice of Felix Senius. **3-4**. MB 15  
951 12" ac. Parlophon P. 1480. RHEINGOLD: Gesang der Rheintöchter 2p. w/ **KNEPEL & MANCKE**. *Pressing fault gives some bumps side 1, oth.* **2**. MB 20  
952 12" ac. Parlophon P. 393. MARTHA: Sieh' nur, wie sie uns betrachten / Was soll ich dazu sagen? w/ **VON CHAVANNE, RÜDIGER & (probably) BÜSSEL**. Ensemble is labeled „Ensemble der Kgl. Dresdner Hofoper“. **2-3**. MB 30



### VON DEBITZKA, Hedwig (DĘBICKA, Jadwiga) (s)

- 953 12" G 66878. RIGOLETTO: Duett Gilda-Rigoletto 2p. (Tutte le feste in Germ.). w/ **DOMGRAF-FASSBAENDER. 2.** MB 12  
954 12" P 66879. RIGOLETTO: Duett Gilda-Rigoletto 2p. (Figlia! Mio padre! in Germ.) . w/ **DOMGRAF-FASSBAENDER. 1-2.** MB 12  
955 12" P 67207. MANON: Briefduett w/ **ROSWAENGE** / FAUST: Juwelen-Arie. **alm. 2.** MB 12  
956 12" ac. P 66149. TRAVIATA: Ah, fors'è lui 2p. **2.** MB 30

### VON DER OSTEN, Eva (s)

- 957 10" SG 14002. MIGNON: Kennst du das Land / **MATZENAUER**: TROVATORE: Lodernde Flammen. **Still 3/3.** MB 10  
958 12" HMV D 1002. ROSENKAVALIER: Ist ein Traum / Mit ihren Augen (Strauss) . w/ **NAST. Creators. 2.** MB 20  
959 12" MRG 044193/94. TOSCA: Duett 1.Akt / Duett 3.Akt. w/ **MAŘÁK. 2.** MB 25

### VON HAXTHAUSEN, William (t)

- 960 10¾" Odeon 34558/59. Still wie die Nacht (Götze) / **MARTHA**: Duett des Plumkett und Lyonel . w/ **GARRISON.**  
*EB NTG leads to a patina just to grooves, oth. heavily scratched, but no needle-wear, so called. 4-5.* MB 8

### VON HAYNAL, Elma (c)

- 961 10" ac. Hertie 673/74. CARMEN: Habanera / Seguedilla. **2-3.** MB 15

### VON OPPENHEIM, Dr. Harold Freiherr (t)

- 962 12" Clangor MD 8001/9199. ZAUBERFLÖTE: Bildnisarie / **RISTOW**: TROVATORE: In deines Kerkers tiefe Nacht.  
Capable singers. **Still 3/2-3.** MB 8

### VON PÁTÁKY, Kolomán (t)

- 963 12" G 66651. AIDA: Celeste Aida / CAVALLERIA RUSTICANA: O Lola. **2-3.** MB 10  
964 12" P 15150. CAVALLERIA RUSTICANA: Siziliana / MANON LESCAUT: Wo lebte wohl ein Wesen. **alm. 2.** MB 10  
965 12" P 66648. POSTILLON DE LONJUMEAU: Postillonlied / LUSTIGE WEIBER VON WINDSOR: Horch, die Lerche. **2.** MB 6  
966 12" P 66811. TRAVIATA: De' miei bollenti spiriri / MANON LESCAUT: Donna non vidi mai. **1-2.** MB 10  
967 12" P 95375. Ave Maria (Kahn) / Élégie (Massenet). w/ **Holst (v).** Uncommon. **alm. 2.** MB 12

### VON RAATZ-BROCKMANN, Julius (b)

- 968 10"Anker 9013. Die Himmel rühmen (Beethoven) / Ständchen (Schubert). **4.** MB 7

### VON STOSCH, Anny (s)

- 969 10" Elektro 5011. BOHÈME: Man nennt mich jetzt Mimi / MADAMA BUTTERFLY: Eines Tages sehen wir. *Cluster of sscrs.* **still 3.**  
MB 4

### VOROTINSKY (bs)

- 970 12" Russ. Beka-Meister R.11094/96. BORIS GODUNOV: Farewell and death of Boris (Mussorgsky) 2p. w. choir,  
cond by **E. Bukk** Favorite-masters, rec. about 1913. *Tiny sscrs.* **3-4.** MB 30

### VYALTSEVA, Anastasia (ms)

- 971 10" B&S Columbia 35431. Troika (Gipsy Romance). Her Columbias are very rare. **4.** MB 25  
972 10" Red G&T 23470. Romance (Shishkin). *Greyed,* **4-5.** MB 15

### WALKER, Edith (c)

- 973 10" orig. G&T 43291. Am Meer (Schubert). Recorded Wien 1902. Scarce. **4.** MB 200

### WATZKE, Rudolf (bs)

- 974 12" G 19790. Heinrich der Vogler / Prinz Eugen (Loewe). **2.** MB 7

### WEDEKIND, Erika (s)

- 975 10" GCR 43713/53464. BARBIERE DI SIVIGLIA: Arie der Rosine / ERNANI: Ernani involami.  
**3/3 or b.** MB 80  
976 10" PD 2-43173/74. MIGNON: Kennst du das Land / Styrienne. *Scr. side 1, oth.* **3-4/3.** MB 35  
977 10" PD 2-44460/61. MIGNON: Schwalben-Duett w/ **RAINS** / Romanze (Auber) w/ **BURIAN.**  
**3-4/3.** MB 40  
978 10" PD 53538/2-43171. Un moto di gioia, KV 579 (Mozart) / **NAST**: NOZZE DI FIGARO:  
Ihr, die ihr Triebe. **2-3.** MB 100

### WEIDT, Lucie (s)

- 979 12" GMR 044143/44. GÖTTERDÄMMERUNG: Zu neuen Taten w/ **SCHMEDES** / **SLEZAK**: MEISTERSINGER: Quintett  
w/ **DEMUTH, FORST, PREUSS & KITTEL.** *Bad NDs side 2, oth.* **3.** MB 10

### WEIL, Hermann (b)

- 980 10" Vox 3078. Aus der Jugendzeit (Radecke) / Neig', holde Knospe (Weil). **1-2.** MB 18  
981 10¾" Odeon 99551/53. TRAVIATA: Arie des Germont / FAUST: Valentins Gebet. **3/4.** MB 8  
982 10¾" Odeon Rx 99552/61. CARMEN: Torerolied / **LISZEWSKY**: TROMPETER VON SÄCKINGEN: Behüt' dich G'tt (Neßler). **3-4/3.** MB 10  
983 11" H&D PL Pathé 60031. TANNHÄUSER: Wohl wußt ich hier sie im Gebet zu finden / Als du in kühnem Sange. **2.** MB 18



**WEIL, Hermann (cont.)**

- 984 12" Columbia Tricolor A 5864. Die beiden Grenadiere (Schumann) / Waldandacht (Abt). 2/alm. 2. MB 12  
985 12" MRG 042325/26. MEISTERSINGER: Flieder-Monolog / FAUST: Valentins Gebet. alm. 2. MB 18  
986 12" Odeon Rxx 76071/124. PAGLIACCI: Prolog / TANNHÄUSER: Blick' ich umher. *Sscrs side 1*, Still 3/3 or b. MB 12

**WEILL, Emmerich (bs)**

- 987 12" P 95248. ZAUBERFLÖTE: O Isis und Osiris / In diesen heil'gen Hallen. 2. MB 7

**WERNER, Fritz (t)**

- 988 10" G&T 3-42478/79. PUFFERL: Kirschenlied / Fesche Geister (Eysler). 4. MB 5

**WESSELY, Molly (s)**

- 989 10" GR 13937. ROSE VON STAMBUL: Fridolin, ach wie dein Schnurrbart sticht / Geh', sag' doch Schnucki zu mir (Fall). w/ REX. *Halfmoon edge-crack gives tics first 12 grooves side 2, oth. a clean* 2. MB 5

**WIEDEMANN, Hermann (b)**

- 990 10" CRG 4-42536/3-44103. NOZZE DI FIGARO: Ich soll ein Glück entbehren / **ANDREJEW VON SZKILONDZ**: DON GIOVANNI: Reich' mir die Hand w/ **HABICH**. *IC side 1 (not through) is silent, 2" scr. side 1, greying side 2, so called.* 4. MB 7

**WILLER, Luise (c)**

- 991 12" G 67153. Traum durch die Dämmerung / Die Georgine (Strauss). Piano acc. **Carl Bergner**. 2. MB 8

**WILLIAMS, Evan (t)**

- 992 10" G&T 3-2858. I'll sing thee songs of Araby (Clay). 3 or b. MB 8  
993 12" G&T 02079. JUDAS MACCABAEUS: Sound an Alarm (Händel). 4-5 (plays better). MB 5

**WILSON, Henry Lane (b)**

- 994 10" G&T 2-2871. The Tinker's Song (arr. Wilson). Good voice. Uncommon.  $\frac{1}{2}$  HC, *oth.* 3 or b. MB 10

**WITTRISCH, Marcel (t)**

- 995 12" White-label Electrola test 2RA 1804-I. HALKA: Rauschen hör' ich Tannen leise (Moniuszko). Half of rare Electrola EH 1026. alm. 2. MB 25

**WOLF, Frieda (s)**

- 996 10" ac. P 13518. BOCCACCIO: Eine Frau darf wohlbedacht / Brief-Terzett (von Suppé). w/ **MERZ & MARCK-LÜDERS**. First record of Nelly Merz, made in 1916/17. 2. MB 15

**WOLF, Otto (t)**

- 997 12" SG 65696. GÖTTERDÄMMERUNG: Siegfrieds Tod / SIEGFRIED: Waldweben. Still 3. MB 8  
998 12" SG 65718. WALKÜRE: Winterstürme / MEISTERSINGER: Am stillen Herd. 3 or b. MB 10  
999 12" ac. P 65695. TRISTAN UND ISOLDE: Wie sie selig / Wohin nun Tristan scheidet. 2. MB 20

**WOLFE, Laurence (t)**

- 1000 10" Edison ER 52468. Fischerweise / Im Abendrot (Schubert). Piano acc. **Walter Golde**. Takes G / B. Recorded 28 November 1928. *Edge-flake aff. first grooves side 1, oth.* 2-3. MB 7

**WULMAN, Paolo (bs)**

- 1001 10" Black. Zonofono X-1775. BOHÈME: Vecchia zimarra. AICC-reverse. *Few sscrs*, 3 or b. MB 25

**YOSIF, Adine (s)**

- 1002 12" Pathé PDT 214. Der du von dem Himmel bist / Über allen Gipfeln ist Ruh' (Liszt). Piano acc. **Jean Germain**. Possibly the only record by this Rumanian soprano. 2. MB 15

**ZANELLI, Renato (t)**

- 1003 12" VdP DB 1339. ANDRÉA CHENIER: Un di all'azzurro spazio / Si, fui soldato (Giordano). *Inaudible marks (inherent?)*. 2. MB 7  
1004 12" VdP DB 1539. CARMEN: Sei tu? 2p. w/ **PEDERZINI**. 2. MB 7

**ZBRUYEVA, Evgenia (c)**

- 1005 12" s/s White-label HMV mx 2660 c. ZHIZN ZA TSARYA: Oh, it's not for me (Glinka). Equivalent of Amour 023119 (wrong handwritten label information). 2. MB 25

**ZENATELLO, Giovanni (t)**

- 1006 12" s/s White-label HMV mx CR 499-I. OTELLO: Si, pel ciel. w/ **NOTO**. Cut live, London, Covent Garden, 19. 6. 1926 and unpublished. alm. 2. MB 12

**ZOHSEL, Friedrich (t)**

- 1007 12" SG 19069. BOHÈME: Wie eiskalt / ZAUBERFLÖTE: Bildnis-Arie. 4/3-4. MB 4

## Vocal Sets

- 1008 11-12" P Meisterklasse 67477-87. **MISSA SOLEMNIS, op.123 (Beethoven)**. w/ **LEONARD, SCHLOSSHAUER-REYNOLDS, TOPITZ & GUTTMANN** in Kyrie; oth. w/ **LAND, SCHLOSSHAUER-REYNOLDS, TRANSKY & GUTTMANN**, alternating w/ **SCHEY, Wilfried Hanke** (v), Bruno-Kittel-Chor, BPhO, cond.by **Bruno Kittel**. Artists differ as the set was recorded in three parts; the Kyrie in January 1928, rest of the set in Juni-July 1928. Some few sides of the Credo and Sanctus were later repeated (?), here Wilhelm Guttman was replaced by Hermann Schey Artist's names are omitted on this 1939 issue as almost all of them were Jewish. **alm.2/2-3**. MB 30
- 1009 10-10¾" & 12" Odeon **TANNHÄUSER: Act II (Wagner)**. w/ **RAINS, KIRCHHOFF, VOGELSTROM, ARMSTER, KRULL, SCHÖFFEL, NEUDAHM, LINDEMANN, THUELEKE, KOPSCH, LEPEL**, Chor d. Kgl. Hofoper Berlin, cond. by **Eduard Künneke**. Perhaps it is interesting for you to know that there are in some cases alternative issued takes. This set has no fewer than four takes different from the set in my collection. Therefore the matrix numbers are given (in order of performance; the letters indicating sizes are omitted) 4920, 4926, 4927, 4928<sup>2</sup>, 4929, 4941, 4921, 4922<sup>2</sup>, 4930<sup>3</sup>, 4943, 4934, 4942, 4935, 4936, 4937<sup>2</sup>, 4933-5, 4938, 4939<sup>2</sup>, 4931, 4940 (sides 1-20). *Nices copies, all between* **2-3/alm. 2**. MB 700

## Instrumental & Symphonic:

### Conductors

#### BARBIROLI, John

- 1010 3-12" Electrola DB 21076-78. Symphonie Nr.83 g-moll „La Poule“ (Haydn) 6p. w/ Hallé-Orchester. Excellent German pressings. **2**. MB 10

#### BLECH, Leo

- 1011 2-12" ac. GR 65845-46. **MÁ VLAST: Vltava** (Smetana) 3p. / **DAMNATION DE FAUST: Rakoczy-Marsch** (Berlioz). *Short scr. side 3, oth.* **2-3**. MB 15
- 1012 12" Purple SG 69545. **OBERON: Ouverture** (Weber) 2p. **2**. MB 10
- 1013 12" Purple SG 69573. **DAME BLANCHE: Ouverture** (Boieldieu) 2p. w/ BPhO. **alm. 2**. MB 10
- 1014 12" Purple SG 69574. **FRA DIAVOLO: Ouverture** (Auber) 2p. w/ BPhO. *Few pimples, oth.* **2**. MB 10



Dusolina Giannini and Leo Blech

#### BÖHM, Karl

- 1015 8-12" Electrola DB 4450-57. Symphonie Nr.4 Es-Dur (Bruckner; Originalfassung) 16p. w/ Sächs. Staatskapelle. Original album. *Two blisters side 6, oth.* **2**. MB 20
- 1016 9-12" Electrola DB 4486-94. Symphonie Nr.5 B-Dur (Bruckner; Originalfassung) 18p. w/ Sächs. Staatskapelle. Original album. *A perfect.* **2**. MB 25

#### FRICSAY, Ferenc

- 1017 12" DGG 72056. **KNYAZ IGOR: Polowetzer Tänze** (Borodin) 2p. w/ RIAS-SO. **2-3**. MB 5

#### FURTWÄGLER, Wilhelm

- 1018 5-12" Electrola DB 3328-32. Symphonie Nr.5 c-moll op.67 (Beethoven) 9p. w/ BPhO. Last disc is s/s. **2**. MB 15

#### GMEINDL, Walther

- 1019 4-12" G Meisterklasse LM 67562-65. Symphonie Nr.92 G-Dur „Oxford-Symphonie“ (Haydn) 8p. w/ BPhO. Photo of Gmeindl on labels. Rare wartime recording (1940). **alm. 2/2**. MB 18

#### HEIDENREICH, Johannes

- 1020 12" ac. Homocord B.8475. **CALIFE DE BAGDAD: Ouverture** (Boieldieu) 2p. w/Künstlervereinigung der Staatsoper. **alm. 2**. MB 5

#### HILDEBRAND, Camillo

- 1021 12" ac. Homocord B.8133. **Ungarischer Tanz Nr.5 / Ungarischer Tanz Nr.6** (Brahms). w/ BSO. **2-3**. MB 10

#### JOCHUM, Eugen

- 1022 6-12" Telefunken E 2311-16. Symphonie Nr.3 Es-Dur (Beethoven) 12p. w/ BPhO. Original album. **2**. MB 15

#### KEILBERTH, Joseph

- 1023 3-12" Telefunken E 3208-10. Symphonie Nr.38 KV 504 (Mozart) 6p. w/ DtPhOPrag. **2**. MB 10
- 1024 12" Telefunken Füllschrift VE 9027. **FREISCHÜTZ: Ouverture / EURYANTHE: Ouverture** (Weber). w/ Bamberger SO. **2**. MB 5

#### KERBY, Paul

Paul Kerby (1899-1971) was associate director of the Salzburg Festival in 1927, presumably the year these recordings were made.

- 1025 12" Edison Bell X 557. **LOHENGRIN: Prelude, act 3 / TANNHÄUSER: Entrance of the guests**. w/ Wiener Symphonie-Orchester. **alm. 2**. MB 10

#### KITSCHIN, Alexander

- 1026 2-12" G 95054-55. 1812, **Ouverture** (Tchaikovsky) 4p. w/ Ural-Kosaken-Chor & BPhO. **2**. MB 10



### **KLEMPERER, Otto**

- 1027 4-12" ac. P 66231, 69761-62, 66234 (different labels). Symphonie Nr.1 (Beethoven) 7p. / **WENDLING-QUARTETT**: Streichquartett op.18,5: Menuett (Beethoven). A second copy of 1<sup>st</sup> disc as P 69760, which has some marks on side 2, will be added. *Some sscr side 4, oth. a perf.* 2. MB 150

### **KNIESTÄDT, Georg**

- 1028 2-12" Clangor MD 1675-76. Symphonie Nr.6 G-Dur „mit dem Paukenschlag“ (Haydn) 4p. w/ Orchester der Staatsoper, Berlin. Complete (abbreviated). alm. 2. MB 6
- 1029 4-12" Clangor MD 1691-98. Symphonie Nr.6 „Pastorale“ (Beethoven) 8p. w/ Orchester der Staatsoper, Berlin. Complete (abbreviated). *Few very lt. Sscr give hardly any tics, dull surfaces of no sonic impairment, cons.* 2-3. MB 12

### **KONOYE, Hidemaro**

- 1030 3-10" P 62792-94. Symphonie Nr.91 Es-Dur (Haydn) 6p. w/ BPhO. Recorded 1938 and rare. 2. MB 25
- 1031 12" G 67259. Notch na lysoj Gore (Mussorgsky) 2p. w/ BPhO. Recorded 1938 . *Pimply surfaces, oth.* 2. MB 10

### **KORMANN, Hanns Ludwig**

- 1032 12" G 15404. Die Fahrt ins Glück / BELCANTO: Ballettmusik (Kormann). Scarce wartime recording (1942). 3 or b. MB 8

### **KOUSSEVITZKY, Serge**

- 1033 6-12" RCA-Vr Set DM 1161. Symphonie Nr.3 Es-Dur (Beethoven) 12p. w/ BostonSO. Original album. alm. 2. MB 10

### **KRAUSS, Clemens**

- 1034 3-10" PoW Electrola EW 71-73. Symphonie Nr.88 G-Dur (Haydn) 6p. w/ WPhO. Excellent pressings. 2. MB 15

### **LEHMANN, Fritz**

- 1035 12" DGG 72369. ROSAMUNDE: Zwischenaktmusik nach dem 3. Aufzug / Ballettmusik II. (Schubert). w/ BPhO. 2. MB 5

### **MASCAGNI, Pietro**

- 1036 2-12" Cz. Odeon AA 176865-66. GUILLAUME TELL: Ouvertüre (Rossini) 4p. 2. MB 8

### **MELICHAR, Alois**

- 1037 2-12" G 27221-22. Capriccio italien op.45 3p. / EUGEN ONEGIN: Polonaise (Tchaikovsky). w/ Mitgl. der KapStOB. Recorded 1938. 2. MB 5

### **MENGELBERG, Willem**

- 1038 3-12" Telefunken SK 2770-72. Symphonie Nr.1 C-Dur op. 21 (Beethoven) 6p. w/ Concertgebouworchester. 2. MB 10
- 1039 3-12" Telefunken SK 2901-03. Serenade für Streichorchester op.48 (Tchaikovsky) 6p. w/ Concertgebouworchester. *Few closed blisters side 4, oth.* 2. MB 10

### **MEUNIER, Jules**

- 1040 10" Purple Favorite 1-9037/38. Ave Maria (Cantique du Xve siecle) / ORATORIO DE NOËL: Tollite Hostias (Saint-Saëns). w/ Maîtrise de St. Ambroise. *Two sscr side 1, oth.* 3/4. MB 8

### **MUCK, Karl**

- 1041 5-12" Vla Set M-37. Three great scenes from Wagner 10p. w/ BStOpO. Original album. Last disc is replaced with HMV D 1544. alm. 2. MB 12

### **NIKISCH, Arthur**

- 1042 4-12" SG 66274-77. Symphonie Nr. 5 (Beethoven) 8p. w/ BPhO. 2. MB 175

### **PFITZNER, Hans**

- 1043 6-12" G 66939-44. Symphonie Nr. 3 (Beethoven) 12p. w/ BPhO. Original album. *Surface depression from heat (?) at start of last disc leads to some bumpy noise for 1/2" side 12, oth. the set is a clean* 2. MB 25
- 1044 6-12" G 66939-44. Symphonie Nr. 3 (Beethoven) 12p. w/ BPhO. Original album. *Some greying end of sides 1, 5, 11 & 12, oth.* 2. MB 20
- 1045 3-12" G 95093-95. Symphonie Nr.1 (Beethoven) 6p. w/ BPhO. 2. MB 25

### **SCHMITZ, Paul**

- 1046 3-12" DGG/P 57107-09. Symphonie Nr.86 D-Dur (Haydn) 6p. w/ Gewandhaus-Kammerorchester Leipzig. 3<sup>rd</sup> disc has a Polydor label. Recorded 1940. 2. MB 12

### **SCHÜLER, Johannes**

- 1047 3-12" Imperial 014054-56. Symphonie Nr.100 G-Dur „Militär-Symphonie“ (Haydn) 6p. w/ WPhO. Rare wartime-recording. Alm.2. MB 12

### **SCHURICHT, Carl**

- 1048 2-12" Fr. Homocord 10007-08. Tod und Verklärung (Strauss) 4p. Extremely rare. 2. MB 80
- 1049 12" Homocord 4-8836. MÁ VLAST: Vltava (Smetana) 2p. Masters 52304-1/52305. Complete (abridged) recording on two sides. Scarce. alm. 2. MB 25

### **SEIDLER-WINKLER, Bruno**

- 1050 12" SG 65667. BARBIERE DI SIVIGLIA: Ouvertüre 2p. w/ NSO. Conductor's name not given on labels. 2. MB 5

## STEIN, Fritz

1051 2-12" Electrola EH 1047-48. Sinfonie Nr. 28 C-Dur, KV 200 (Mozart) 4p. w/ Berliner Instrumental-Collegium. 2. MB 8

## VAN KEMPEN, Paul

1052 12" G 15190. Slavischer Marsch op.31 (Tchaikovsky) 2p. w/ DresdenPhO. Recorded 1938. *Short scr. at start side 1, oth.* 2. MB 4

1053 3-12" P 67546-48. Nußknacker-Suite op.71 (Tchaikovsky) 6p. w/ DresdenPhO. Recorded 1939. Alm.2/2-3. MB 10

## VON SCHILLINGS, Max

1054 3-12" Parlophon P.9800-02. Symphonie h-moll (Schubert) 6p. alm. 2. MB 12

## WEISBACH, Hans

1055 3-12" Imperial 014066-68. Symphonie Nr.104 D-Dur (Haydn) 6p. w/ WPhO. Rare wartime-recording. 2. MB 12

## WEISSMANN, Frieder

1056 12" ac. Odeon AA 79491/92. Ungarische Lustspiel-Ouvertüre (Kéler) 2p. w/ BSO. Uncommon on ac. Odeon. 2. MB 10

## WEYERSBERG, Bruno

1057 12" Anker 9409. Ungarischer Tanz No.6 (Brahms) / SYMPHONIE ES-DUR: Menuett (Mozart). w/ Blüthner-Orchester (as are # 1058 & 1059). 2. MB 10

1058 12" Anker E.9532. EGMONT: Ouvertüre (Beethoven) 2p. 2. MB 10

1059 2-12" Anker E.9560-61. GUILLAUME TELL: Ouvertüre (Rossini) 4p. 2. MB 18

## ZIEHRER, Carl Michael

1060 12" SG 15500. Wiener Bürger (Ziehrer) / An der schönen blauen Donau (Strauß). Conductor's name not given on labels. 3/alm. 3. MB 12



## Piano

### BACKHAUS, Wilhelm

1061 12" Electrola DB 1130. Zigeunertanz (Smetana) / Caprice Espagnole op.37 (Moszkowski). *Slightly warped, oth.* 2. MB 8

### BOSKOFF, Georges

1062 3-12" Odeon O-7693-95. Klavier-Konzert Nr.19 F-Dur, KV 459 (Mozart) 6p. w/ Philh. Orch. Paris, cond. by **Gustave Cloëz**. 2. MB 18

### BUSONI, Ferruccio

1063 12" ac. Columbia L 1456. Ungarische Rhapsody Nr.13 (Liszt) 2p. 1-2. MB 50

### DORFMAN, Ania

1064 4-12" RCA Vr. Set DM 1036. Konzert Nr.1 C-Dur (Beethoven) 8p. w/ NBCSO, cond. by **Arturo Toscanini**. Original album. 2-3. MB 8

### ERDMANN, Eduard

1065 4-12" Telefunken E 1889-92. Konzert Nr.3 c-moll (Beethoven) 8p. w/ BPhO, cond. by **Artur Rother**. Original album. *Pimply surfaces, sides 7 & 8 pits from open blister each, oth.* 2-3. MB 12

### FARAGÓ, György

1066 10" . Radiola RZ 3045. Arabesque E-Dur / Arabesque G-Dur (Debussy). 2-3. MB 7

### GIESEKING, Walter

1067 10" Homocord 4-3003. Freundliche Vision / Ständchen (Strauss). alm. 2. MB 7

1068 10" Odeon O-25228. Freundliche Vision / Ständchen (Strauss). 2. MB 7

1069 12" ac. Homocord 1-8488. Ungarische Rhapsodie Nr. 12 (Liszt) 2p. 2. MB 25

1070 12" ac. Homocord B.8423. PARTITA B-DUR: Prelude und Sarabande / Menuette 1 und 2 und Gigue (Bach). 2-3. MB 25

1071 4-12" Germ. Columbia LWX 288-91. Konzert Nr.4 G-Dur (Beethoven) 8p. w/ SächsStKap., cond. by **Karl Böhm**. Original album. 2. MB 15

### GRÜNFELD, Alfred

1072 10" CRG 45578/79. Mazurka h-moll (Chopin) / Guitarre op. 45 (Moszkowski). *1" NR side 1, oth.* 2-3. MB 10

1073 10" GCR 45562/63. Menuett (Paderewski) / LEBEMANN: Colibri-Polka (Grünfeld). 2-3. MB 15

1074 10" SG 45538/39. Etude à la Tarantella op.47 (Grünfeld) / Mazurka h-moll (Chopin). 3-4/4. MB 7

1075 10" SG 61869. ROSAMUNDE: Ballettmusik (Schubert) / Mazurka à la Viennoise op.51 (Grünfeld). *ND at start side 1 (might let needle skip), oth.* 4/3. MB 5

1076 12" G&T 045506. Schubertlieder-Transcription (Grünfeld). *Some greying, therefore.* 3-4. MB 10

1077 12" G&T 045508. Feuerzauber (Wagner-Brassin). *Lt. NR, oth.* 2-3. MB 10

1078 12" GR 045522/23. Isoldens Liebestod (Wagner-Liszt) / Ungarische Tänze (Grünfeld). Heavy Czech pressing. 3. MB 12

## HAMBOURG, Mark

- 1079 12" MRG 045534/35. a) Pastorale b) Capriccio (Scarlatti) / Etude in Ges (Moszkowski). Early Hambourg. 1" NR side 2, oth. 2-3. MB 10
- 1080 12" s/s HMV 05579. La Campanella (Liszt). 3. MB 5

## HIRT, Franz Josef

- 1081 2-12" G 95133-34. Funérailles (Liszt) 3p. / La cathédrale engloutie (Debussy). *Small cluster of sscr's side 2, NH side 4, oth. 2-3*. MB 10

## MOISEWITSCH, Benno

- 1082 12" s/s HMV 05613. Capriccio b-moll op.76,2 (Brahms). 3. MB 7
- 1083 5-12" HMV C 3043-47. Konzert Nr.5 Es-Dur (Beethoven) 10p. w/ LPhO, cond. by **Georg Szell**. Original album. Side 1 is 2-3, sides 2-10 alm. 2. MB 10

## MÜLLER-CHAPPUIS, Rudolf

- 1084 12" P 67989. KINDERSCENEN: First 7 pieces (Schumann). Probably a set of 2 discs. Recorded 1942. *Edge-chip ntg, oth. 2-3*. MB 5

## NIKISCH, Mitja

- 1085 4-12" Telefunken E 1643-46. Klavierkonzert d-moll KV 466 (Mozart) 8p. w/ BPhO, cond. by **Rudolf Schulz-Dornburg**. alm. 2. MB 15

## PICHT-AXENFELD, Edith (harpsicord)

- 1086 12" DGG Archiv 3401. Chromatische Fantasie und Fuge d-moll (Bach) 2p. 2. MB 7

## SCHÄFER, Dirk

- 1087 12" ac. GR 66101. Nocturno op.15,1 / Nocturno op. 55,1 (Chopin). *Destroyed groove side 1, oth. 2-3*. MB 15
- 1088 12" ac. GR 66104. Berceuse op. 57 / Valse brillante op.42 (Chopin). *Label tear side 1, oth. 3/3-4*. MB 10
- 1089 12" ac. White G Musterplatte 66105. SONATE op.35: Trauermarsch / Etude op.25,11 (Chopin). 4. MB 5

## SCHNABEL, Artur

- 1090 4-12" It. VdP DB 1886-89. Konzert Nr.4 G-Dur (Beethoven) 8p. w/ LPhO, cond. by **Malcolm Sargent**. Original Electrola album. 2-3. MB 10
- 1091 4-12" PoW Electrola DB 2249-52. Klavierkonzert B-Dur KV 595 (Mozart) 8p. w/ LSO, cond. by **John Barbirolli**. Excellent German pressings. Side 7 2-3, oth. alm.2/2. MB 12

## SCHULHOFF, Erwin

An important and innovative composer (1894-1942) whose compositions often included elements of Jazz and dance music, Schulhoff, who also was an active communist, even set Marx' Communist Manifesto to music. Being Jewish, too, he was persecuted by the Nazis and died in a concentration camp in Bavaria.

- 1092 12" P 95198. Suite No.2 (Schulhoff) 2p. Recorded 1928. Rare and important. 2-3. MB 40

## SEEMANN, Carl

- 1093 12" DGG 72071. Serenade in A (Stravinsky) 2p. 2. MB 12
- 1094 2-12" DGG 72035-36. Klavierkonzert Nr.25 C-Dur KV 503 (Mozart) 4p. w/ MPhO. Alm.2/2-3. MB 10

## VON KOCZALSKI, Raoul

- 1095 10" SG 62441. Polonaise As-Dur op.53 (Chopin) 2p. Rare. 2-3. MB 35

## ZADORA, Michael (von)

- 1096 12" ac. GR 19025. Walzer op.64,1 / Nocturne op.32,1 (Chopin). Scarce. *Patina side 2 is silent, some sscr's side 2, so called. 2/3*. MB 15
- 1097 10" SG 14686. Consolations III / Consolations IV (Liszt). Rare. 2. MB 50
- 1098 12" Ultraphon E 996. Larghetto (Henselt-Zadora) / Rondo favori (Hummel). Rare. *Greying on forward spots (as in most Ultraphons), but plays well as. 3*. MB 25

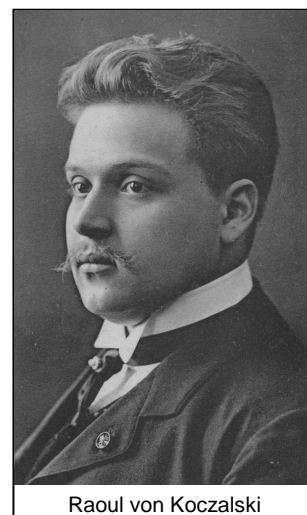
## Violin

### BACHMANN, Alberto

- 1099 10¾" Aérophone 535/36. Sérénade Madrilène (Bachmann) / THAÏS: Méditation (Massenet). *Needle-cut side 2 (needle might need some help), oth. 4*. MB 7

### DESSAU, Bernhard

- 1100 10" orig. G&T 47938. Cavatine (Raff). 1903 recording. *Rough start clears up quickly, It.NR at start gives hardly any tics, open blister, gen. still 3*. MB 75
- 1101 10" SG 61893. Liebesfreud / Liebesleid (Kreisler). 2/2-3. MB 25
- 1102 12" ac. Kalliope 4038\*. Liebesfreud / Liebesleid (Kreisler) Anker masters. *Short ND gives few tics side 1, oth. 2-3*. MB 18



Raoul von Koczalski

## HAVEMANN, Gustav

1103 12" ac. Parlophon P.1577. Petite Caprice und Wiegenlied (Reger) / Melodie op.12,3 (Tchaikovsky). w/ piano acc. by **Kurt Ruhrseitz**. Scarce. 2-3/alm. 2. MB 25

## JOACHIM, Joseph

1104 12" SG 65289. Ungarischer Tanz d-moll Nr.2 (Brahms) / **H. GRÜNFELD**: Adagio (Mozart). *A perfect 2*. MB 50

## KAUFMANN, Adolf

1105 10" ac. Artiphon 3021/25. Du alter Stefansturm (arr. Kreisler) / Le Canari (Poliakin). Piano acc. **Friedrich Kark**. 3/2-3. MB 5

## KREISLER, Fritz

1106 12" s/s Purple SG 68022. Praeludium (Bach). 2. MB 8

## KULENKAMPFF, Georg

1107 12" Telefunken F 1142. Romanze F-Dur (Beethoven) 2p. 2. MB 5

## LEDERER, Dezső

1108 10¾" Eden E.4029/2097. Sérénade Badine (Marie) / **PASCAL** (fl): Badinage. 3-4. MB 10

## MAHLKE, Hans

1109 12" ac. Odeon 76322/23. LYRISCHE STÜCKE: a) Elegie b) Walzer / a) Berceuse b) Einsamer Wanderer (Grieg). w/ **Eduard Künneke** (p). Uncommon. *Some lt. greying on forward spots, but plays very well.* 2-3/3. MB 25

## PŘÍHODA, Vaša

1110 10" G 47185. Rosenkavalier-Walzer (Strauss-Příhoda) 2p. 2-3. MB 5

1111 10" SG 62567. Ay-Ay-Ay (Freire) / Walzer (Dvořák-Příhoda) . Piano acc. **Charles Cerné**. *Open blister side 2, oth.* 2-3. MB 10

1112 12" SG 66223. Le cygne (Saint-Saëns) / Introduction et Tarantelle (Sarasate) . w/ piano acc. by **Charles Cerné**. 3. MB 10

1113 12" Siemens Spezial 68045. Jota Navarra (Sarasate) / Romanze (Tchaikovsky). Piano acc. **Michael Raucheisen**. 2. MB 10

## SCHULZ, Bruno

1114 12" Favorite 2-14008/09. Großmütterchen / Großväterchen (Langer). *ND gives 4-5 tics side 2, many sscrs, plays as .* 3-4. MB 12

## SENATRA, Armida

1115 12" Anker E.9976. Andantino (Padre Martini-Kreisler) / Romanze A-Dur (Schumann-Kreisler). 2. MB 30

## STIEHLER, Kurt

1116 2-12" DGG Archiv 2402-3e. Konzert für Violine und Oboe d-moll, BWV 1060 (Bach) 3p. w/ **Kalmus (hb)** & Solisten-Vereinigung der Bachwoche Ansbach, cond. by Ferdinand Leitner. 2<sup>nd</sup> disc is s/s 2-3. MB 8

## THIBAUD, Jacques

1117 3-12" Electrola DB 1328-30. Sonate Nr.9 A-Dur op.47 (Beethoven) 6p. w/ **Alfred Cortot** (p). 2-3. MB 10

## WEBER, Marek

1118 12" ac. Parlophon P.1559. Kol Nidrei (Bruch) 2p. 2. MB 10

## WEISSGERBER, Andreas

1119 12" Odeon O-7512. Ungarische Tänze Nr.2 und 5 (Brahms-Joachim) / Csárdás (Hubay). w/ **Otto A. Graef** (p). alm. 2. MB 20

## WELTMANN, Fery

1120 10¾" Odeon 97723/36. Kunok abrand (Huber) w/ **Rozsi WELTMANN (v)** / CARMEN: Fantaisie de Concert (Bizet-Hubay). Still 3. MB 15

## WOLFSTHAL, Josef

1121 12" ac. Artiphon 7033/34. Träumerei (Schumann) / Humoreske (Dvořák). Uncommon. 2-3. MB 25

## Violoncello

### BERGER, Julius

1122 12" ac. Parlophon P.219. SERSE: Largo (Händel) / Lieder ohne Worte No. 6 und 9 (Mendelssohn). 2/3. MB 8

### BRÜCKNER, Oskar

1123 12" Anker E.9813. La Cinquantaine (Mari) / Menuett D-Dur (Mozart). *Lt. NR at start side 2, oth.* alm. 2. MB 18

1124 12" Anker E.9867. Sarabande (Bach) / Gebet (Dorn). *Few sscrs,* still 2-3. MB 18

### FÖLDESZ, Arnold

1125 12" Homocord 4-8740. Melodie (Rubinstein) / Serenade espagnole (Popper). Piano acc. **Helmuth Baerwald**. 2. MB 15

1126 12" ac. Homocord B.8246. Melodie (Rubinstein) / ROCOCO-VARIATIONEN: Andante und Coda (Tchaikovsky). Piano acc. **Wilhelm Scholz**. Scarce. 2-3. MB 25



## FÖLDESZ, Arnold (cont.)

- 1127 12" ac. Odeon Rxx 76227/28. Prélude / Andante (Rachmaninoff). Piano acc. **Wilhelm Scholz**.  
Very rare. *Cluster of scrs side 2, therefore. 3/4-5.* MB 15
- 1128 12" Vox \*06164. Notturmo op.9,2 (Chopin) / Scherzo (v. Gvens). **2-3.** MB 18
- 1129 12" Vox \*6024. Arie „Nina“ (Pergolesi) / Tarantella (Popper). **alm. 2.** MB 18

## GRÜNFELD, Heinrich

- 1130 12" MRG 047862/63. Elegie (Chopin) / a) Ja, überselig hast du mich gemacht (Eckert, arr. Grünfeld) b) Moment musical (Schubert; arr. Grünfeld). *(Heat?)Patches give swishes both sides, therefore. 4.* MB 5

## HEKKING, Anton

- 1131 10" SG 12411. Abendlied (Schumann) / JOCELYN: Berceuse (Godard).  
*It. NR side 2, oth. alm. 2.* MB 7
- 1132 12" Picture-label Anker E.9677. Serse: Arie (Händel) / Litanei (Schubert).  
*A perfect. 1-2.* MB 20
- 1133 12" Picture-label Anker E.9688. Andante (Hekking) / Ave Maria (Bach-Gounod).  
**alm. 2.** MB 18



## KRUSE, H

- 1134 12" Parlophon P.663/64. Fantasie aus „Tell“ (Rossini; arr. Kossmann) 2p.  
**alm. 2.** MB 12
- 1135 12" Parlophon P.665/66. Fantasie über Schumanns [sic!] Sehnsuchtswalzer (Servais) 2p. Actually, the waltz is by Schubert. One wonders whether the error was made by the Parlophon company or by the composer. On the other hand, Battistini recorded a vocal version of the piece as by Beethoven ... **2/2-3.**

## LOEVENSOHN, Marix

- 1136 10¾" Odeon 51394/95. Berceuse (Strauven) / Le cygne (Saint-Saëns). **alm. 2.** MB 15

## STEGMANN; Ewel

- 1137 12" ac. Odeon AA 55038/39. Kol nidre (Bruch) / Serenade orientale (Popper). w/ piano acc. by **Dr. Mark Günzburg**.  
*Sscrs, still 3.* MB 8

## VON MACHULLA, Tibor

- 1138 2-12" Telefunken E 2778-79. Konzert für Cello B-Dur (Boccherini, arr. Grützmacher) 4p. w/ BPhO, cond. by **Hans von Benda**.  
**2.** MB 10

## Various Instruments

### DREISBACH, Philipp (cl)

- 1139 12" SG 15958. KONZERT A-DUR: Adagio (Mozart) / KONZERT Nr.2 op. 57: Adagio (Spohr). *Few sscrs, gen. 3 or b.* MB 10

### KALEVE, Gustav (fl)

- 1140 10" GCR 48079/49550. Serenade (Titl) / **HIEBER (horn):** Träumerei (Schumann). Side 1 too w/ **Hieber (horn)** & piano.  
**2-3.** MB 10

### LICHTENSTEIN, Alfred (fl)

- 1141 12" Homocord 4-8800. Hymne an die heilige Cäcilie (Gounod) / **EWELER, Grete (v):** Ave Maria (Bach-Gounod).  
*Harmless ULC, oth. 2-3.* MB 10

### PRILL, Emil (fl)

- 1142 10¾" Odeon X.51052/53. Carmen-Fantasie (Borne) 2p. **3/2-3.** MB 15

## Chamber music

### BERLINER TRIO-VEREINIGUNG (Bernhard Dessau, Heinrich Grünfeld, Moritz Mayer-Mahr)

- 1143 12" SG 65304. TRIO ES-DUR op.1: Adagio (Beethoven) / Extase (Ganne). **3.** MB 10

### CALVET-QUARTETT

- 1144 4-12" Telefunken SK 2142-45. Streichquartett op.18,1 (Beethoven) 8p. **2.** MB 15
- 1145 4-12" Telefunken E 2595-98. Streichquartett e-moll op.59,2 (Beethoven) 8p. **2.** MB 15
- 1146 3-12" Telefunken E 2960-62. Streichquartett f-moll op.95 (Beethoven) 6p. **2.** MB 12

### CELLO-QUARTETT (Georg Wille, Fritz Nusser, Franz Schmidt, Johannes Fleischer; Dresden).

- 1147 12" ac. P 65785. Religioso (Goltermann) / Variationen (Klengel). Scarce. **alm. 2/3 or b.** MB 15

### ČESKÉ KVARTETO

- 1148 4-12" Cz. P 395076-79. Smyčcový kvartet e-moll „Z mého života“ (Smetana) 8p. **alm. 2.** MB 25

### HIRT-TRIO

- 1149 4-12" G 95286-89. Trio C-Dur op. 87 (Brahms) 7p. / Trio Nr. 5 G-Dur: Andante (Mozart). **2-3.** MB 15

### KARL-KLINGLER-STREICH-QUARTETT

1150 12" ac. Odeon Rxx 76274/75. QUARTETT A-DUR op.18,5: Variationen (Beethoven) 2p. 2-3. MB 15

### KOECKERT-QUARTETT

1151 12" DGG 72067. Streichquartett Nr.12: Satz c-moll op. posth. (Schubert) / Italienische Serenade (Wolf). 2. MB 8

### MAIRECKER-BUXBAUM-QUARTETT

1152 12" ac. Parlophon P. 1341. QUARTETT D-MOLL: Scherzo / QUARTETT D-DUR: Andante (Haydn) . Recorded 6 April 1922 and the only issued disc from this series. In fact, these are the only published acoustical recordings of this important Viennese ensemble. Scarce. alm. 2. MB 75

### ONDŘÍČKOVO KVARTETO

1153 4-12" Ultraphon G 12610-13. Smyčcový kvartet e-moll „Z mého života“ (Smetana) 8p. alm. 2. MB 15

### JACQUES RENARD (v), HORACE FELLOWES (vc) & RICHARD EPSTEIN (p)

1154 12" PD 048001/02. TRIO op.85: Andante / TRIO op.56: Andante (Reissiger). 3-4/3. MB 8

1155 12" PD 048006/05. TRIO op.66: Rondo (Reissiger) / **HAWKINS & WEBB (ct)**: ROSE OF ERIN: Der Mond ist aufgegangen (Benedict). 3 or b/3. MB 12

### ROSÉ-QUARTETT

1156 12" Homocord 4-8771. STREICHQUARTETT op.18,5: Andante cantabile con Variationi (Beethoven) / Serenade (Haydn). *IC, hardly visible and silent, oth.* alm. 2. MB 35

### VIRTUOSO-STREICH-QUARTETT

1157 4-12" Electrola EJ 99-102. Quartett C-Dur op.59,3 (Beethoven) 7p. / Rondo C-Dur op.74,1 (Haydn). 3. MB 8

## Cylinders:

### BOYER DE LAFORY, Suzanne (c)

1158 4-Min BA. Edison 27003. PROPHÈTE: Donnez, donnez (Meyerbeer). OBT. Very rare, let alone in perfect condition. 1-2. MB 125

### PÉRIER, Jean (b)

1159 2-Min Pathé 1736. Mignonne amie (Figeau). OB. Extremely rare and important. 2. MB 350

# 54



# 11



# 828