

PUBLIC

Installation Guide








SAP Business One 8.81, 8.8, 2007 A or 2007 B on Microsoft SQL Server 2008 Express Edition

December 2010

THE BEST-RUN BUSINESSES RUN SAP™



Icons

Icon	Meaning
	Caution
	Example
	Note
	Recommendation
	Syntax

Typographic Conventions

Type Style	Description
<i>Example text</i>	Words or characters that appear on the screen. These include field names, screen titles, pushbuttons as well as menu names, paths and options. Cross-references to other documentation.
Example text	Emphasized words or phrases in body text, titles of graphics and tables.
EXAMPLE TEXT	Names of elements in the system. These include report names, program names, transaction codes, table names, and individual key words of a programming language, when surrounded by body text, for example, SELECT and INCLUDE.
Example text	Screen output. This includes file and directory names and their paths, messages, source code, names of variables and parameters as well as names of installation, upgrade and database tools.
EXAMPLE TEXT	Keys on the keyboard, for example, function keys (such as F2) or the ENTER key.
Example text	Exact user entry. These are words or characters that you enter in the system exactly as they appear in the documentation.
<Example text>	Variable user entry. Pointed brackets indicate that you replace these words and characters with appropriate entries.

Contents

Introduction	4
Purpose	4
Limitations.....	4
Prerequisites.....	4
SAP Business One 8.81, 8.8, 2007 A or 2007 B on SQL Server 2008 Express Edition Installation Process	5
Downloading SQL Server 2008 Express Edition	6
Installing and Configuring SQL Server 2008 Express Edition	7
Prerequisites.....	7
Installing SQL Server 2008 Express Edition.....	8
Configuring SQL Server 2008 Express Edition.....	17
Installing SAP Business One 8.81, 8.8, 2007 A or 2007 B	19
Copyrights & Trademarks	20
Disclaimer	20

Introduction

Purpose

As of SAP Business One Release 2007 A PL47 and 2007 B PL10, the application supports Microsoft SQL Server 2008 Express Edition. This document describes the technical installation of SAP Business One 2007 on SQL Server 2008 Express Edition.

Limitations

Tests conducted by SAP showed that SAP Business One is subject to the following limitations when running on SQL Server 2008 Express Edition:

- Supports up to 3 concurrent users of the database.
- No individual database should grow beyond 3.5 gigabytes; otherwise, SAP cannot support the parameters set by Microsoft for using SQL Server 2008 Express Edition. To prevent this from happening, do the following:
 - Monitor the growth of the databases and be sure to implement an early warning system to advise the system administrator when the database grows to within 10% of the 3.5 GB size limit.
 - Only the implementation of an early warning system can ensure that the customer has sufficient time to upgrade to SQL Standard Edition and help you avoid escalations.

One way you can implement an early warning system is by using the sample script at http://searchsqlserver.techtarget.com/tip/0,289483,sid87_gci1313431,00.html. Based on this script, the SQL Server administrator or support engineer can perform standard tasks such as executing SQL Server stored procedures and setting up alerts. For more information about these tasks, see [SQL Server 2000 Books Online](#), [SQL Server 2005 Books Online](#) and [SQL Server 2008 Books Online](#) in the download centre of the Microsoft Web site.



NOTE

This script is provided on a public page. Therefore, SAP does not take any responsibility for it. Should we notice any issues, we will describe them in an SAP Note.

- Move the databases onto a server running Microsoft SQL Server 2008 Standard Edition. This can be done by detaching the databases, installing the newer version of SQL Server, and then re-attaching the files.
- For more associated technical guidance, refer to Microsoft documentation.

Prerequisites

To effectively utilize SQL Server 2008 Express Edition and get the maximum performance from your application within the limitations, make sure that your system meets the following Microsoft requirements:

- 1 CPU
- The server deployed must be a dual or quad core processor-based system.
- At least 4 GB of RAM is installed on the server to allow the allocation of the full 1 GB of RAM to the SQL Server 2008 Express Edition engine.

SAP Business One 8.81, 8.8, 2007 A or 2007 B on SQL Server 2008 Express Edition Installation Process

To install SAP Business One 8.81, 8.8, 2007 A or 2007 B on Microsoft SQL Express, follow the steps below:

1. Download SQL Server 2008 Express Edition.
2. Install SQL Server 2008 Express Edition.
3. Configure SQL Server 2008 Express Edition.
4. Install SAP Business One.

Downloading SQL Server 2008 Express Edition

To download the SQL Server 2008 Express Edition installation package from the official Microsoft site, proceed as follows:

1. Go to the Microsoft Download Center home page by clicking the Web site <http://www.microsoft.com/downloads/Search.aspx?displaylang=en>.
2. In the *Search* field, enter **SQL 2008 Express**, and then choose *Go*.
3. On the search list page, read the features and system requirements for each installation as listed in the tables below:

Version Features	SQL Server 2008 Express Edition	SQL Server 2008 Express Edition with Advanced Services	SQL Server 2008 Express Edition with Tools
Database Engine	X	X	X
Client Software	X	X	X
Full Text Search		X	
Reporting Services		X	
Management Studio Express		X	X

Version Features	SQL Server 2008 Express Edition	SQL Server 2005 Express Edition with Advanced Services	SQL Server 2005 Express Edition Toolkit
RAM (minimum)	256 MB	512 MB	512 MB
RAM (recommended)	1 GB	1 GB	1 GB
Drive Space	1 GB	1.9 GB	1.9 GB
Processor (minimum)	1GHz (32-bit), 1.4GHz (64-bit)		
Processor (recommended)	2 GHz		
IIS 5 or higher	No	Yes	No
Operating systems supported	Windows Server 2003 Service Pack 2, Windows Server 2008, Windows Vista, Windows XP Service Pack 2		
Software prerequisites	.NET Framework 3.5 SP1 & MSXML 6 Windows Installer 4.5 or higher Windows PowerShell 1.0		
Other requirements	Server joined to your Active Directory domain.		

4. Choose an installation accordingly and then on the next page, choose *Download*.



We recommend downloading **Microsoft SQL Server 2008 Express Edition with Advanced Services**, which bundles SQL Server Express, SQL Server Management Studio Express, and other additional services.

It takes 10-15 minutes to download this package depending on your bandwidth.

Installing and Configuring SQL Server 2008 Express Edition

Prerequisites

Before installing SQL Server 2008 Express Edition, make sure that you have done the following:

- Installed Microsoft .NET Framework 3.5 SP1
To download, go to <http://msdn2.microsoft.com/netframework/>. After downloading is finished, double-click the downloaded file to run the installation.
Installed MSXML6
To download, go to <http://www.microsoft.com/downloads/details.aspx?FamilyID=993c0bcf-3bcf-4009-be21-27e85e1857b1&DisplayLang=en#filelist>. After downloading is finished, double-click the downloaded file to run the installation.
- Installed Microsoft Windows Installer 4.5 or higher
To download, go to <http://go.microsoft.com/fwlink/?LinkId=120486>. After downloading is finished, double-click the downloaded file to run the installation.
- Installed Windows PowerShell 1.0
To download, go to <http://go.microsoft.com/fwlink/?LinkId=120552>. After downloading is finished, double-click the downloaded file to run the installation.
- Uninstalled any previous Beta, CTP, or Tech Preview versions of SQL Server 2008 and Visual Studio 2008



For security purposes, we highly recommend you do the following:

- For daily use, create an unprivileged user account named **SQLExpressUser**, instead of using the built-in service accounts on your SQL Server. This can limit the server's attack surface more than using the latter.
- Assign a strong password to the new account.
- Join the new account to a domain and add the new account by using *Active Directory Users and Computers*.

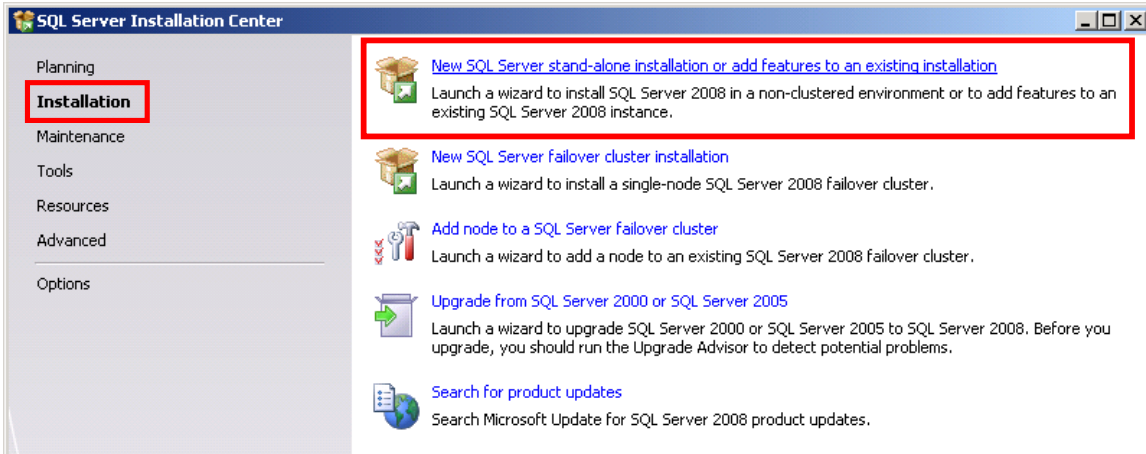
To test it locally, add the account by using *Computer Management*.

If one user has already logged on, other users cannot log on with the same account. This mechanism ensures only one logon session with the same SQL service account.

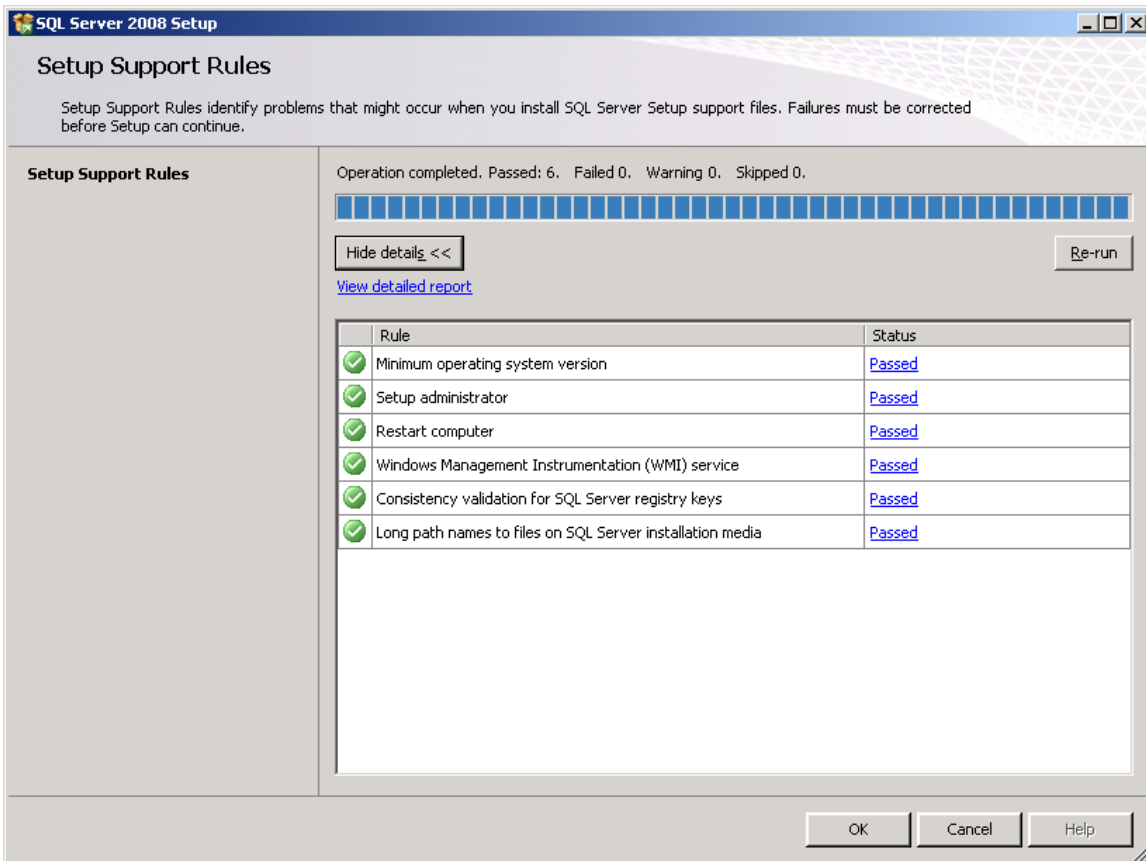
When logging on as this unprivileged user, you cannot change the password.

Installing SQL Server 2008 Express Edition

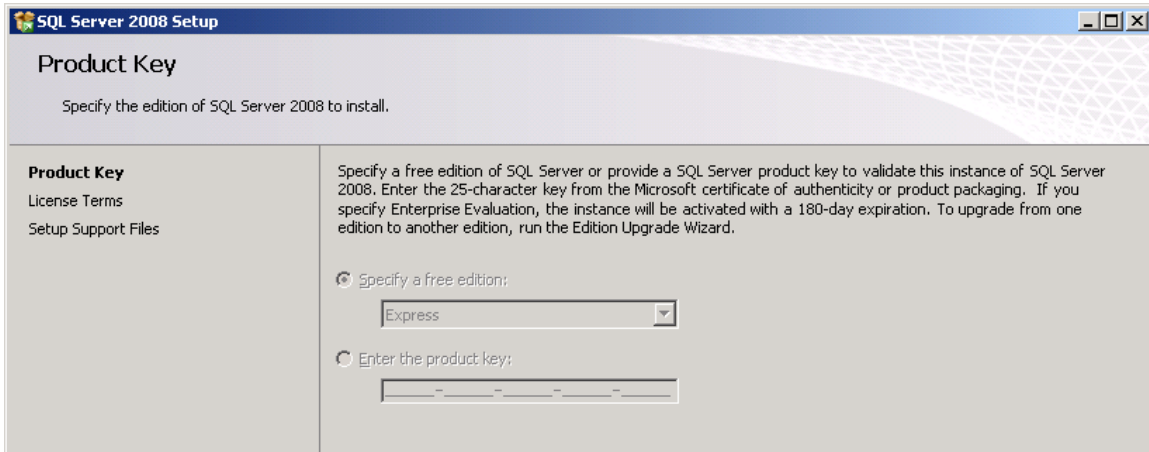
1. Start the Microsoft SQL Server 2008 Express Edition Setup
2. Click on *New SQL Server stand-alone installation* under the installation tab.



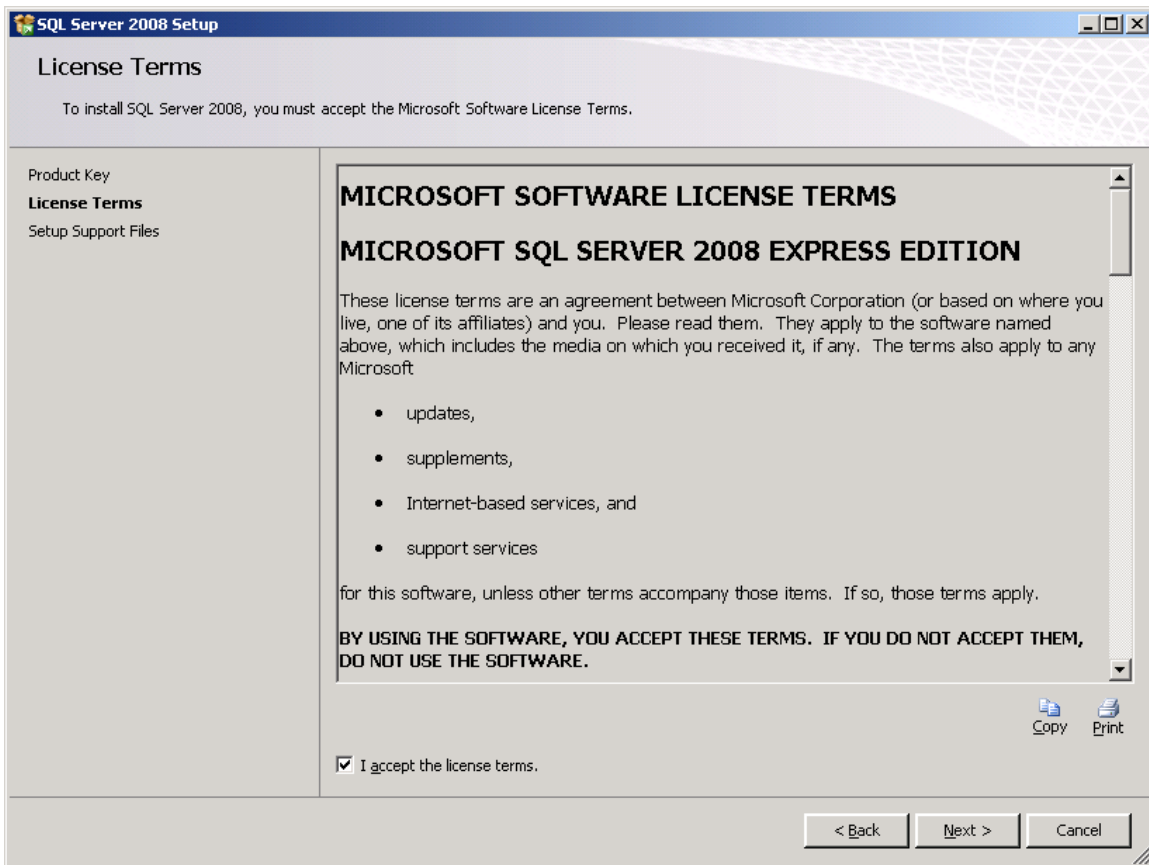
3. After the Setup Support Rules check has finished, check that your computer has passed all rules and click on *OK*



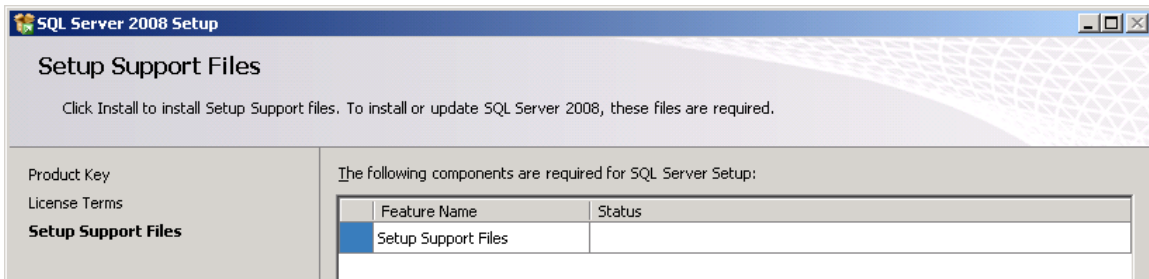
4. Click on *Next* on the product key window



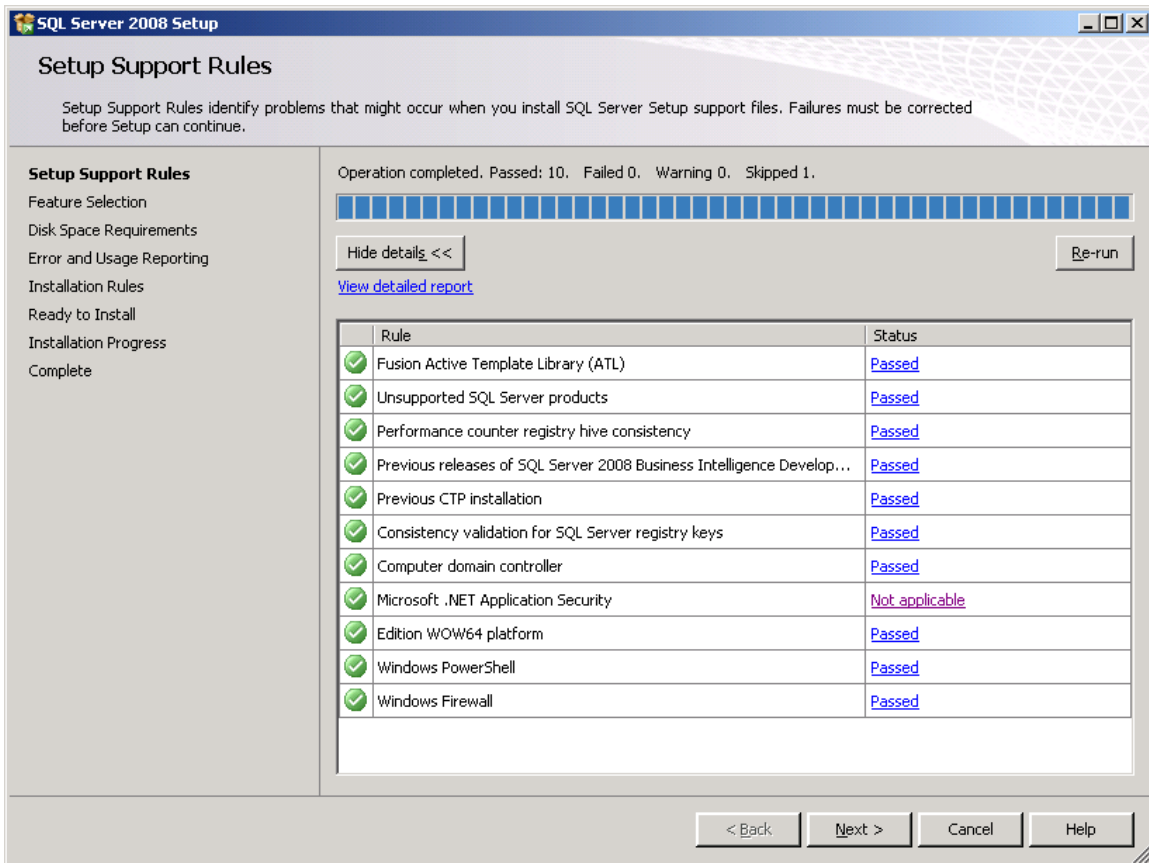
5. Accept the *End User License Agreement* and choose the *Next* button.



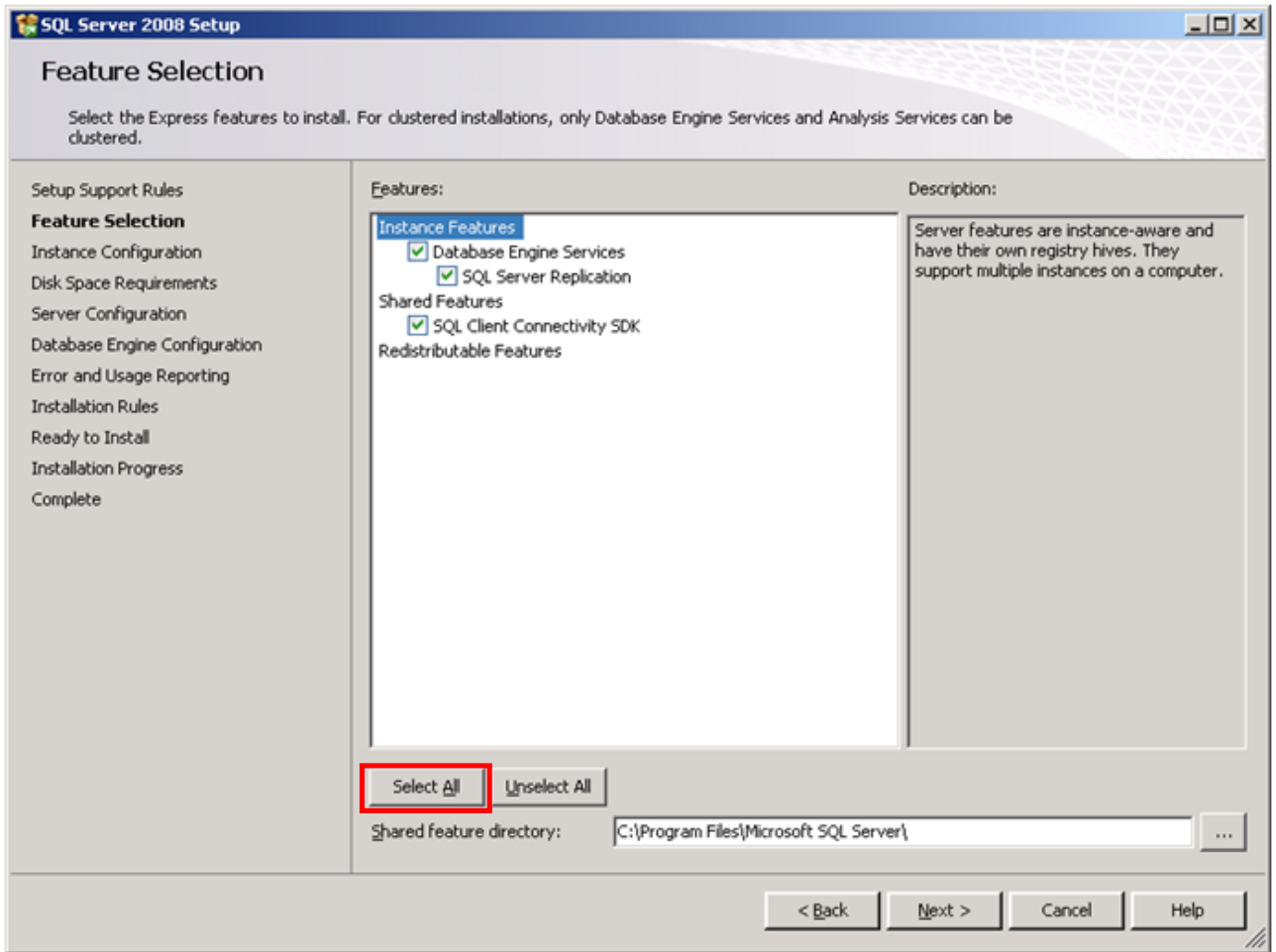
6. In the *Setup Support Files* window, choose the *Install* button.



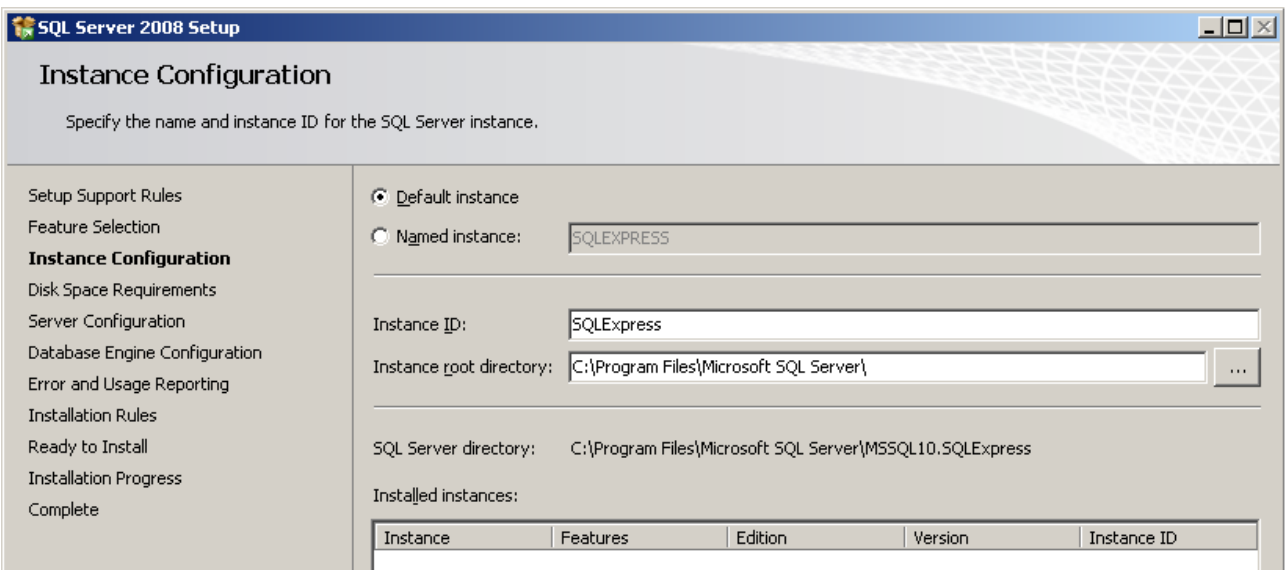
7. Once these prerequisites are installed, check that your pc has passed all rules and click on *Next*.



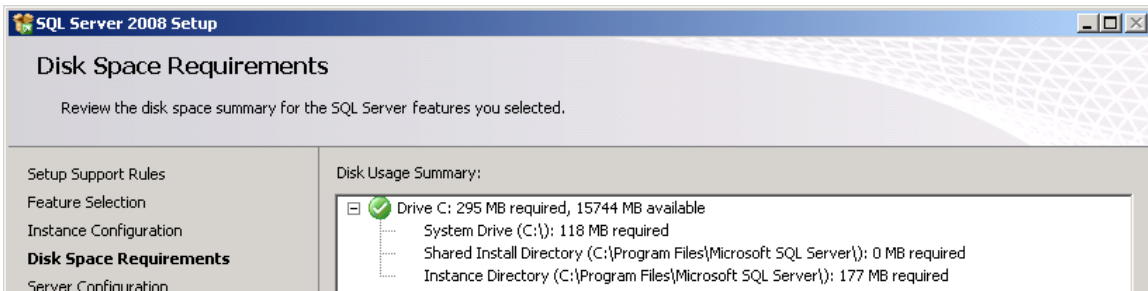
- In the *Feature Selection* window, we highly recommend that you install all the items as below:
Click therefore on the *Select All* Button



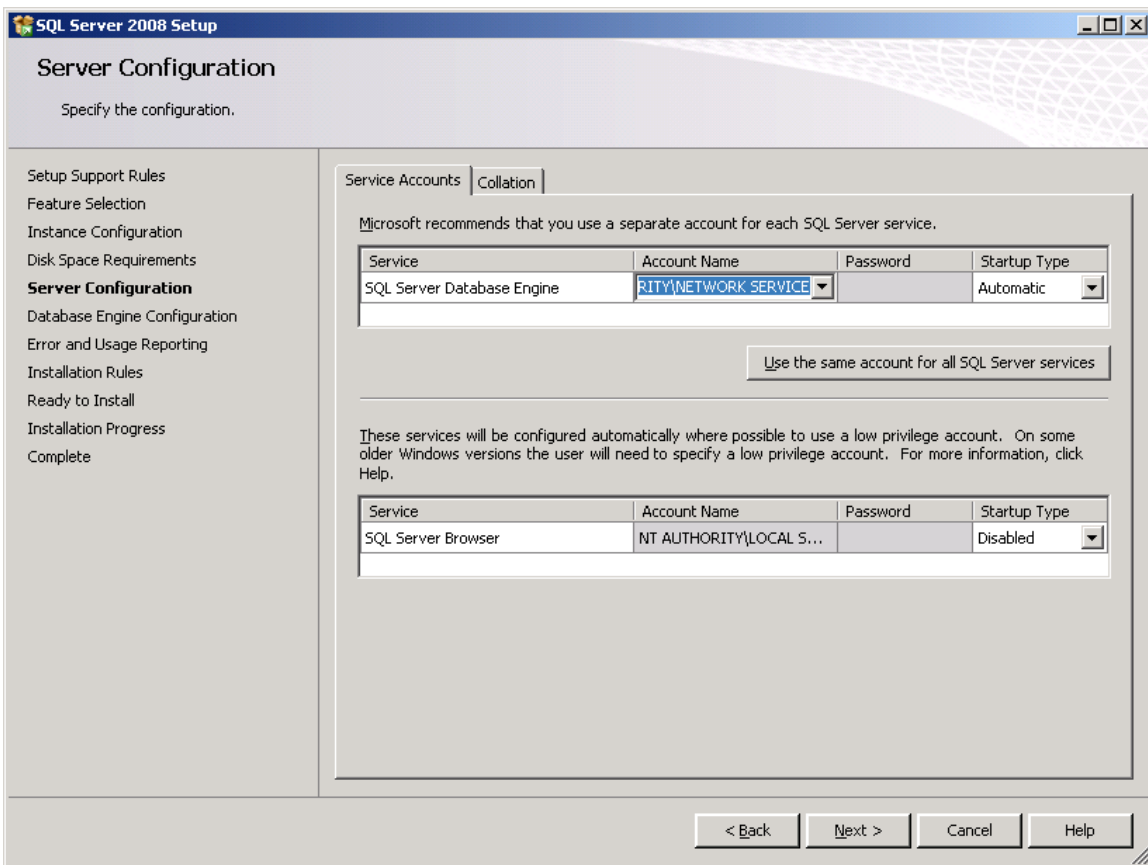
- In the *Instance Configuration* window, select the *Default Instance* radio button, and then choose the *Next* button.



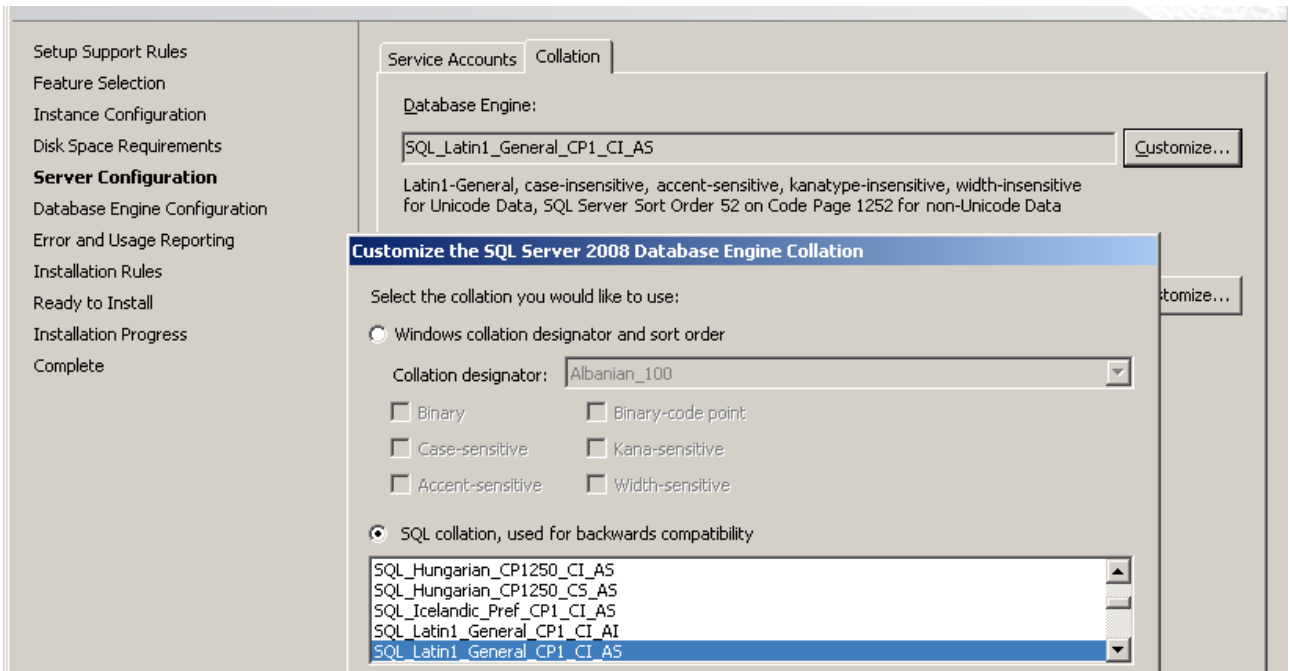
10. Choose the *Next* button in the *Disk Space Requirements* window



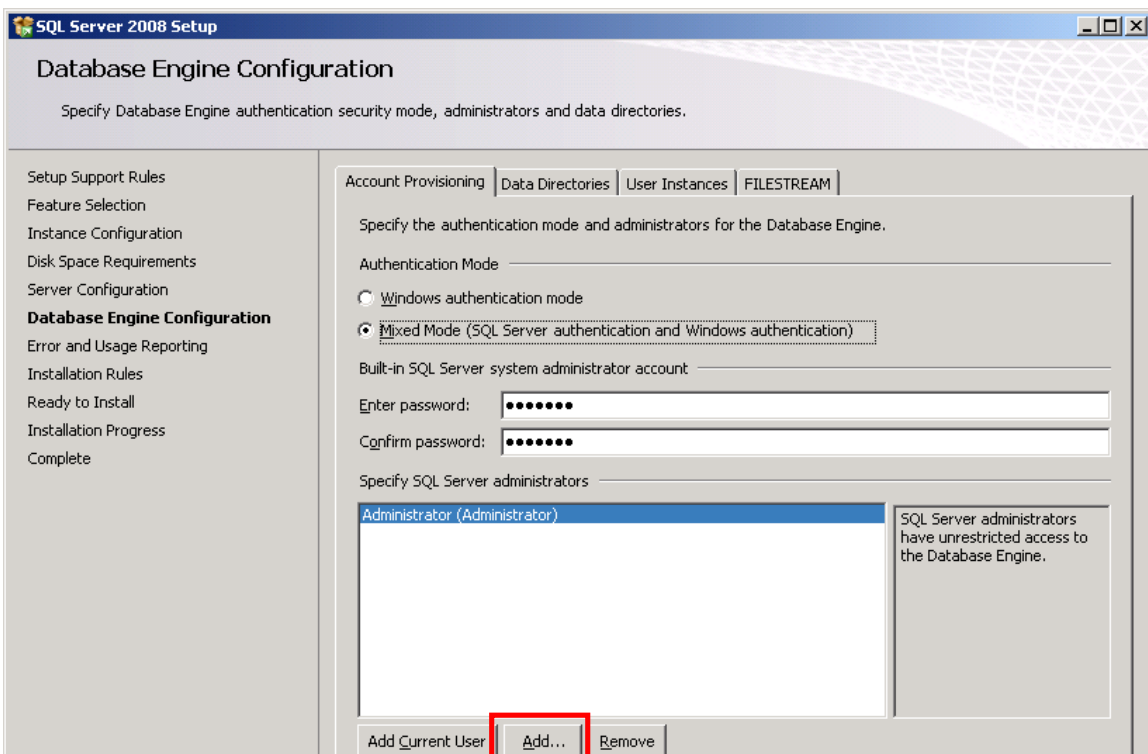
11. Click the dropdown arrow and select the *NT AUTHORITY\NETWORK SERVICE*



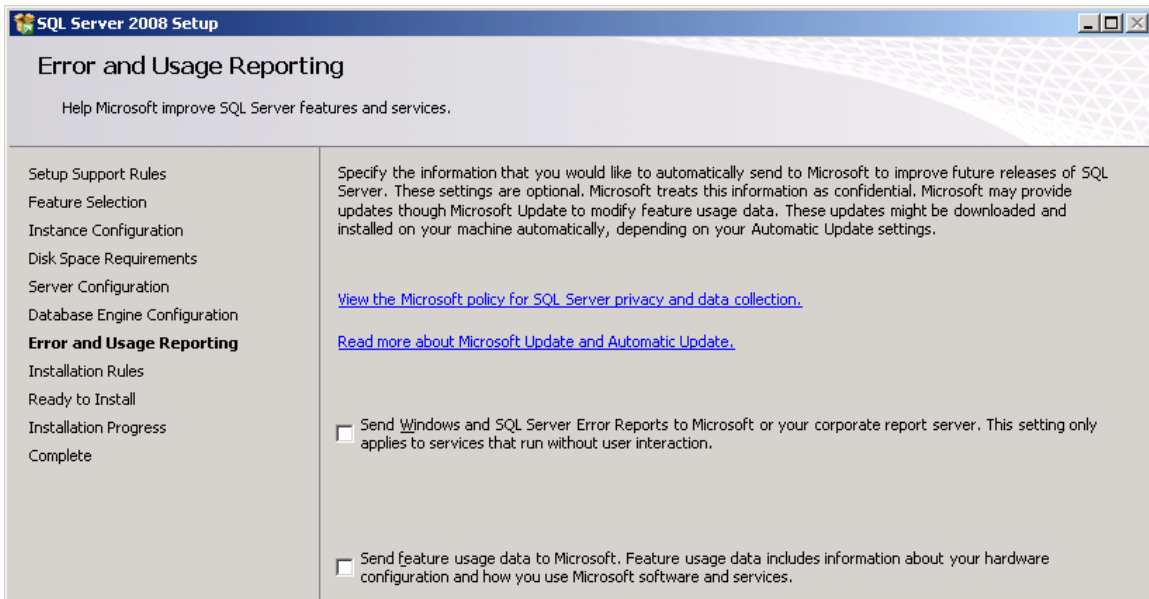
- Select the *Collation* tab and check if the *Database Engine* has the *SQL_Latin1_General_CP1_CI_AS* value selected otherwise click on *Customize* and set it manually. Afterwards click on *Next* to continue.



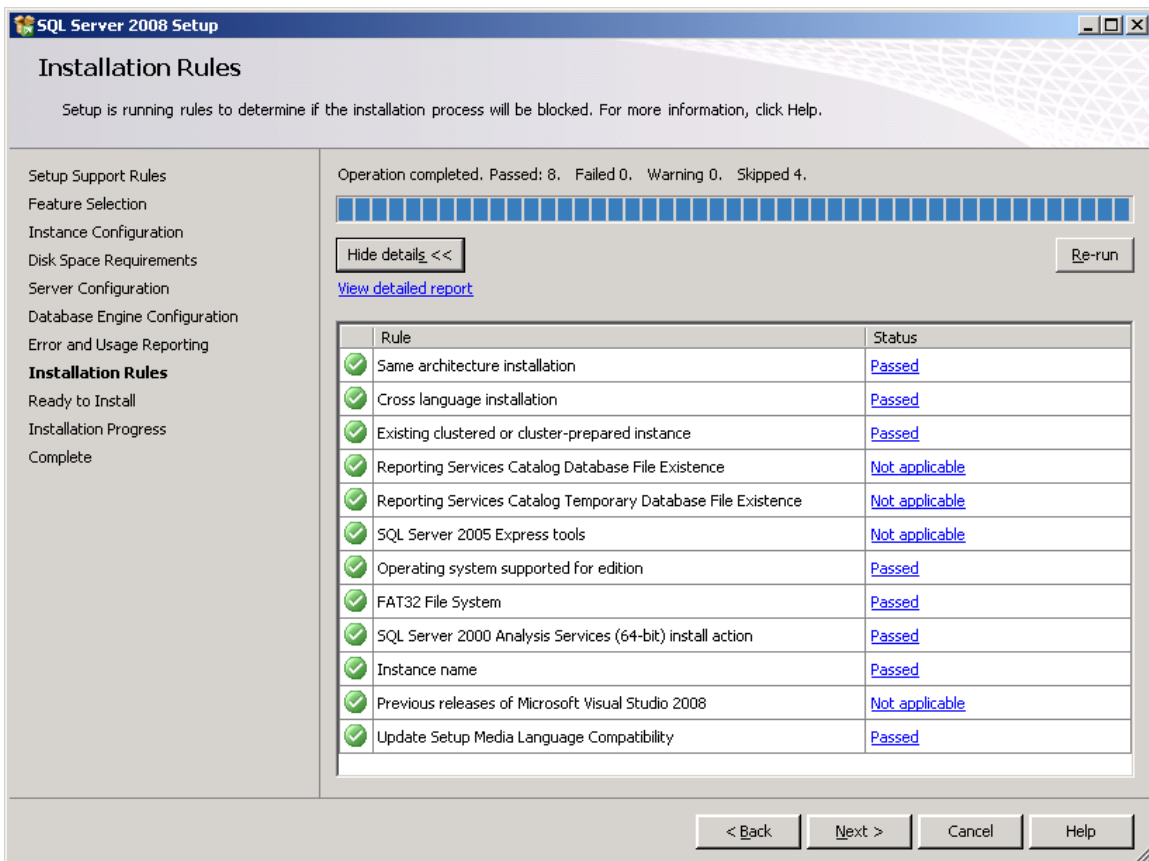
- Select the *Mixed Mode* radio button and enter a password for the **system administrator (sa) account**. And also add the Administrator Group by choosing the *Add* button (*Advanced* → *Find Now*). Finally choose the *Next* button.



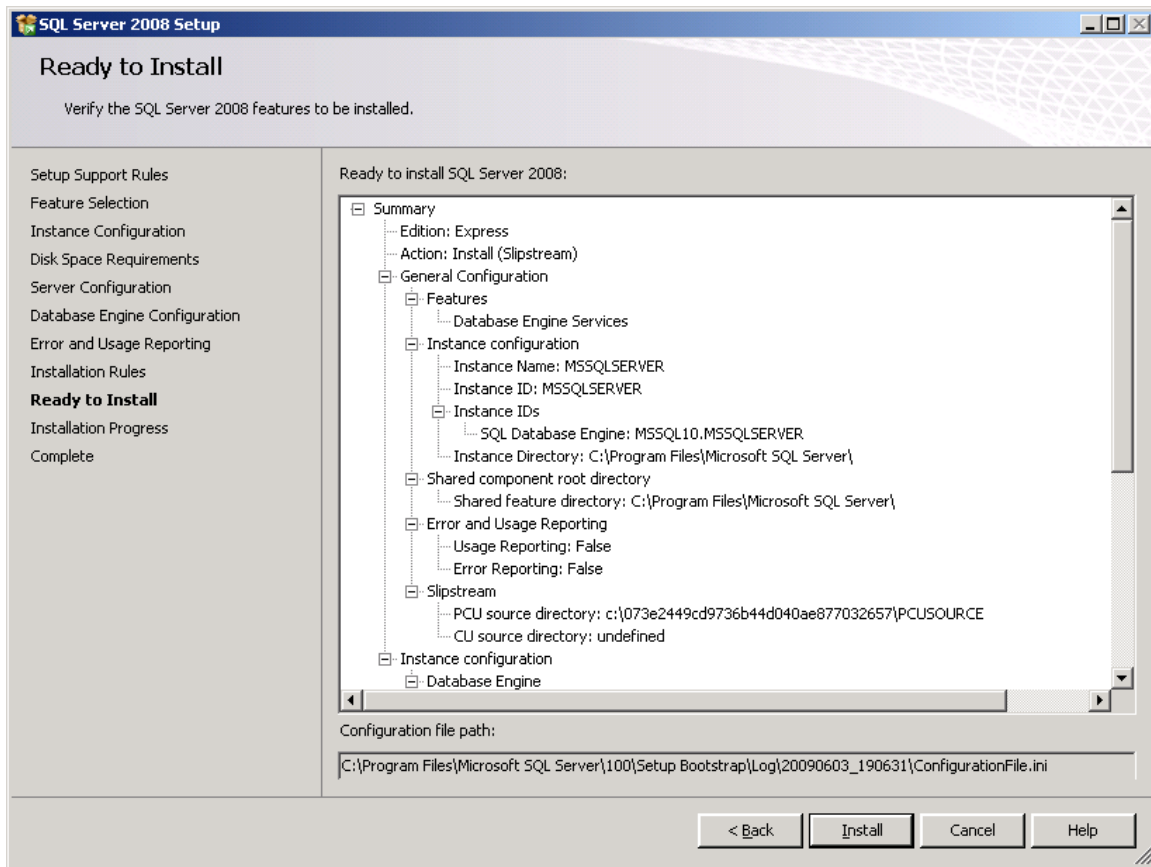
14. In the *Error and Usage Reporting* window, choose the *Next* button.



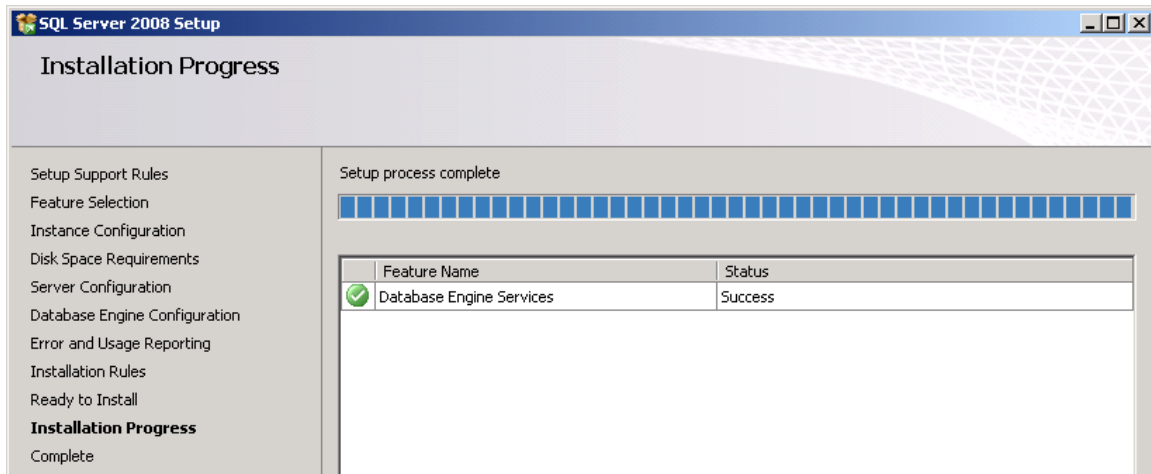
15. After the *Installation Rules* check has finished, check that your computer has passed all rules and choose the *Next* button.



16. Click on *Install* in the *Ready to Install* window.

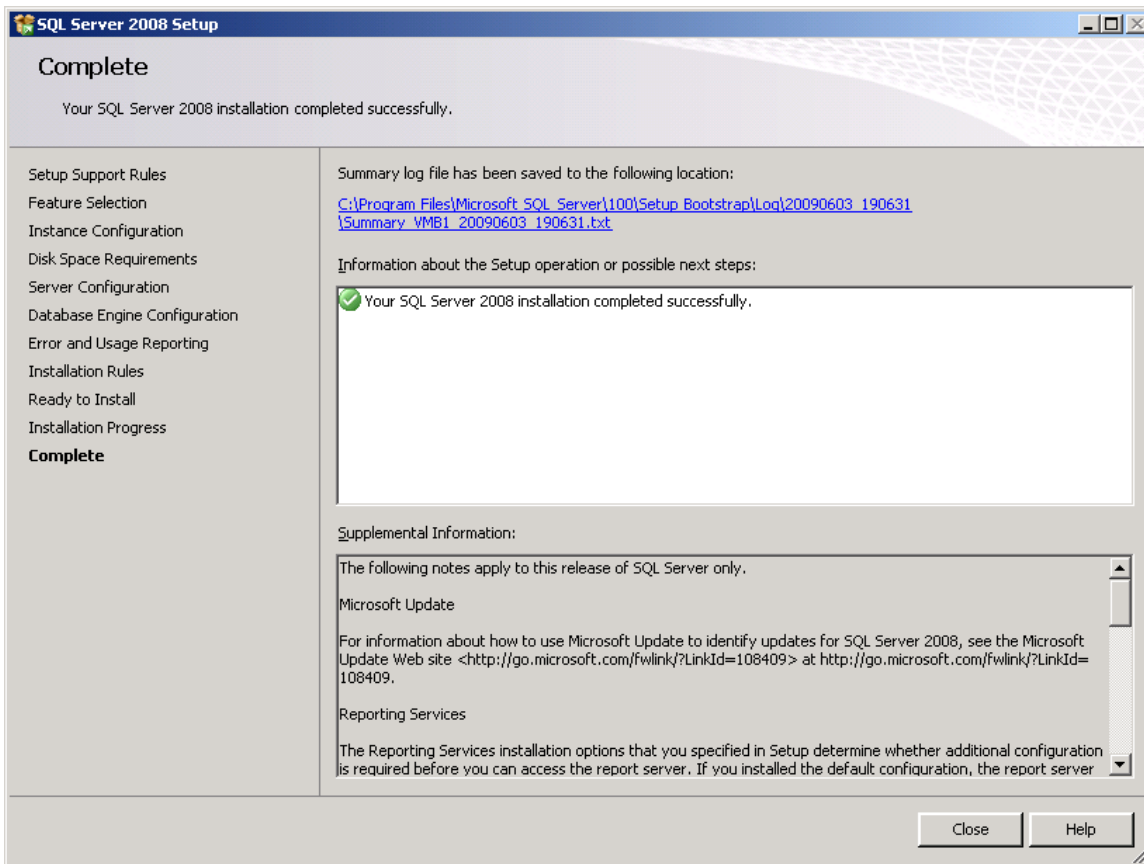


17. After the installation progress is finished click on *Next*



Result

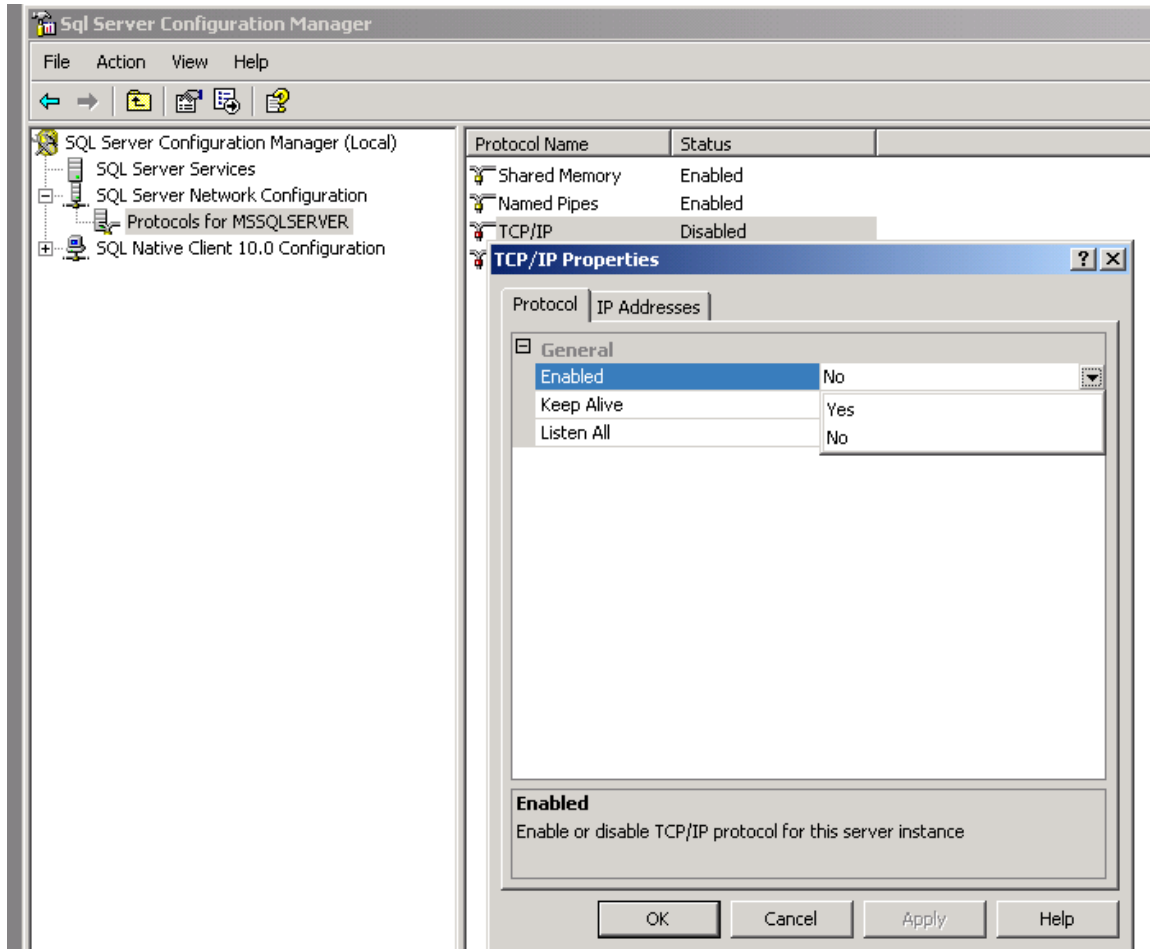
You have installed SQL Server 2008 Express Edition successfully. You must now configure the application before setting up SAP Business One 8.81, 8.8, 2007 A or 2007 B on it.



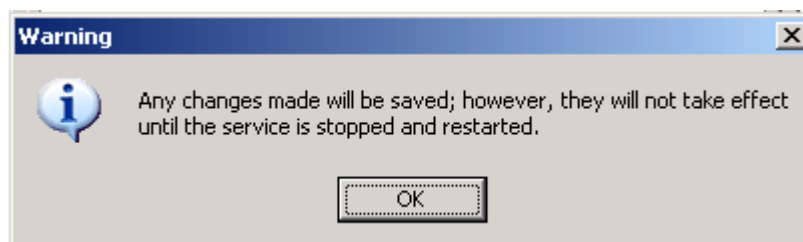
Configuring SQL Server 2008 Express Edition

To configure SQL Server 2008 Express Edition, proceed as following:

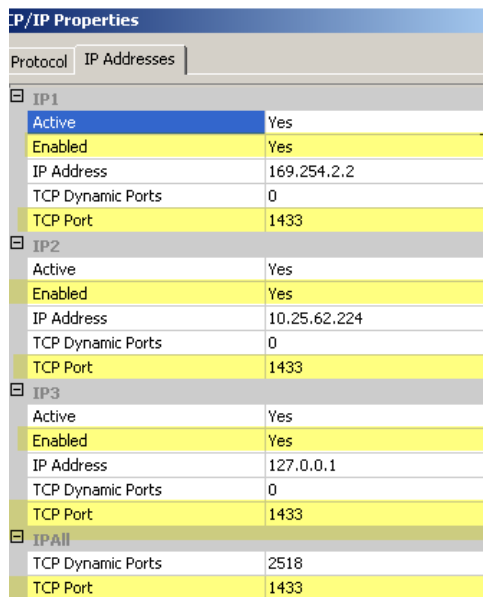
1. Go to *Start* → *All Programs* → *Microsoft SQL Server 2008* → *Configuration Tools* → *SQL Server Configuration Manager*.
2. Expand the *Server Network Configuration* Node and Click on the nodal point *Protocols*.
3. Do a right mouse click on the *TCP/IP* entry in the *Protocol Name* column and click on *Properties*.
4. Turn in the *Protocol* tab *Enabled* on *Yes*.



5. Choose the *OK* button.



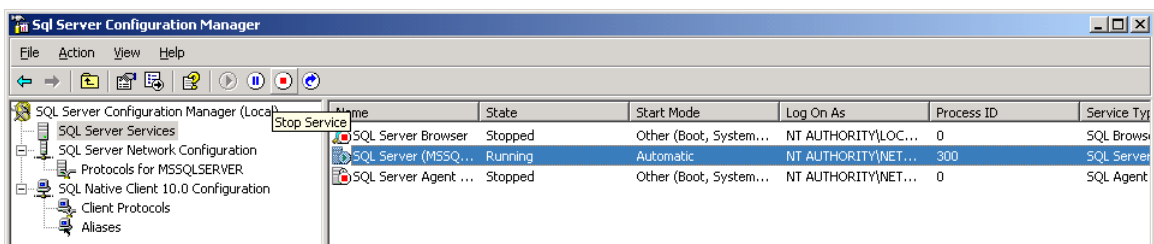
6. Click on the *IP Addresses* tab and check if your desired Network Adapters and the local host adapter with the IP-Address 127.0.0.1 is set on Enabled = Yes. Also enter the TCP Port 1433 for all enabled adapters and click on apply.




7. Choose the *OK* button again.



8. Select *SQL Server Services*, select the row with the Service Type *SQL Server* at the end of the row and click on the *Stop Service* button in the icon bar.



9. After the database has been stopped click on the *Start Button*  to restart the Database

Result

Your system is ready for the SAP Business One setup.

Installing SAP Business One 8.81, 8.8, 2007 A or 2007 B

To install SAP Business One 8.81, 8.8, 2007 A or 2007 B, in the related *Administrator's Guide*, go to chapter 3.2.1.4. step 7 for SAP Business One 8.81, 8.8, and for SAP Business One 2007 A or 2007 B go to chapter 2.4 step 3.

For more information, see <https://channel.sap.com/sbo/documentation>.

Copyrights & Trademarks

© Copyright 2010 SAP AG. All rights reserved.

The current version of the copyrights and trademarks at <http://channel.sap.com/sbocustomer/documentation> is valid for this document.

Disclaimer

Some components of this product are based on Java™. Any code change in these components may cause unpredictable and severe malfunctions and is therefore expressly prohibited, as is any decompilation of these components.

Any Java™ Source Code delivered with this product is only to be used by SAP's Support Services and may not be modified or altered in any way.