

## BIOLOGY AND SYSTEMATICS OF HETEROKONT AND HAPTOPHYTE ALGAE<sup>1</sup>

ROBERT A. ANDERSEN

Bigelow Laboratory for Ocean Sciences, P.O. Box 475, West Boothbay Harbor, Maine 04575 USA

In this paper, I review what is currently known of phylogenetic relationships of heterokont and haptophyte algae. Heterokont algae are a monophyletic group that is classified into 17 classes and represents a diverse group of marine, freshwater, and terrestrial algae. Classes are distinguished by morphology, chloroplast pigments, ultrastructural features, and gene sequence data. Electron microscopy and molecular biology have contributed significantly to our understanding of their evolutionary relationships, but even today class relationships are poorly understood. Haptophyte algae are a second monophyletic group that consists of two classes of predominately marine phytoplankton. The closest relatives of the haptophytes are currently unknown, but recent evidence indicates they may be part of a large assemblage (chromalveolates) that includes heterokont algae and other stramenopiles, alveolates, and cryptophytes. Heterokont and haptophyte algae are important primary producers in aquatic habitats, and they are probably the primary carbon source for petroleum products (crude oil, natural gas).

**Key words:** chromalveolate; chromist; chromophyte; flagella; phylogeny; stramenopile; tree of life.

Heterokont algae are a monophyletic group that includes all photosynthetic organisms with tripartite tubular hairs on the mature flagellum (discussed later; also see Wetherbee et al., 1988, for definitions of mature and immature flagella), as well as some nonphotosynthetic relatives and some that have secondarily reduced or lost tripartite hairs. Brown seaweeds, diatoms, and chrysophytes are commonly known members of the group. Haptophyte algae are a monophyletic group that includes all photosynthetic organisms with a haptonema, as well as some nonphotosynthetic relatives, and some that have secondarily lost the haptonema. The haptonema, from which the group derives its name, is a microtubule-supported appendage that lies between two approximately equal flagella (for review, Inouye and Kawachi, 1994). The coccolithophores and genera such as *Pavlova* and *Isochrysis* are commonly known members of the group. Representatives of heterokont algae and haptophytes are shown in Figs. 1–24. Until 1992, haptophytes were included or closely aligned with heterokont algae, but a nuclear small subunit ribosomal RNA (SSU rRNA) analysis indicated they are distantly related (Bhattacharya et al., 1992). Recent molecular studies, based on other genes, have now indicated that heterokont and haptophyte algae may be more closely aligned than the SSU rRNA data indicated (Yoon et al., 2000a, b; Harper and Keeling, 2003; Ryall et al., 2003).

**Historical perspective**—Brown seaweeds were referred to in early Chinese (ca. 3000 BC), Greek (e.g., Theophrastus, ca. 300 BC), and Japanese (ca. 500 AD) writings, and knowledge of brown seaweeds likely predated recorded history. In early human history, brown seaweeds were used for human and animal food, medicinal purposes, and dyes. Most other heterokont algae are microscopic, although mats of macroscopic *Vaucheria* (Xanthophyceae) may have been known but not recorded in historical works.

The first modern scientific report is the description of *Fucus*

(Phaeophyceae) by Linnaeus (1753), and shortly thereafter, microscopic chrysophytes (currently = *Oikomonas*, *Anthophysa*) were described by Müller (1773, 1786). The history of heterokont algae was recently discussed in detail (Andersen, 2004), and four distinct periods were identified. The discovery period (1753–1882) is that era in which brown algae were described as plants, and microalgae were described as infusoria and treated as animals. Perhaps the most significant publication of the era was the two-part publication of Ehrenberg (1838) that contained his light microscopic observations. The first synthesis period (1882–1914) began when brown algae and microalgae were first integrated and phylogenetic relationships were discussed (Rostafinski, 1882; Correns, 1892; Klebs, 1893a, b; Lemmermann, 1899; Blackman, 1900), but the period ended when these two groups were once again separated (Pascher, 1914). The floristic period (1914–1950) was dominated by the description of many species. There was a nearly complete absence of evolutionary discussion, for the primary reason that the light microscope was unable to resolve characters for determining relationships (Fritsch, 1935). The second synthesis period (1950–2002) began with and was dominated by evolutionary and phylogenetic relationships (e.g., Chadeffaud, 1950; Bourrelly, 1957; Taylor, 1976; Leipe et al., 1996; Daugbjerg and Andersen, 1997a, b). Transmission electron microscopy provided a wealth of new and phylogenetically informative data (e.g., Dodge, 1973; Hibberd, 1976; Taylor, 1976; Andersen, 1987), and biochemical studies were also initiated (e.g., Strain, 1951; Quillet, 1955; Archibald et al., 1963; Ragan and Chapman, 1978; Smestad-Paulsen and Myklestad, 1978; Bjørnland and Liaen-Jensen, 1989; Jeffrey, 1989). Cladistic analysis brought new ways for analyzing evolutionary relationships (e.g., Hibberd, 1979; Lipscomb, 1989; Andersen, 1991; Williams, 1991; Sorhannus, 2001), and molecular systematics added powerful new data sets (e.g., Gundersen et al., 1987; Leipe et al., 1994, 1996; Guillou et al., 1999b; Moriya et al., 2002; Goertzen and Theriot, 2003). Discoveries led to descriptions of many new taxa, including several classes: Eustigmatophyceae (Hibberd and Leedale, 1970), Dictyochophyceae (Silva, 1980), Synurophyceae (Andersen, 1987), Coscinodiscophyceae and Fragilariophyceae (Round et al., 1990), Chrysomerophyceae (Cavalier-Smith et al., 1995),

<sup>1</sup> Manuscript received 31 December 2003; revision accepted 22 June 2004.

I thank David Patterson and Hiroshi Kawai for providing color photographs of algae and Stacy Edgar for assistance with phylogenetic analysis. Supported by NSF grants DEB-0206590 and DEB-0212138.

E-mail: randers@bigelow.org.

Bolidophyceae (Guillou et al., 1999a), Pelagophyceae (Andersen et al., 1993), Phaeothamniophyceae (Bailey et al., 1998), Pinguicophyceae (Kawachi et al., 2002b), and Schizocladophyceae (Kawai et al., 2003). The sequencing of the *Thalassiosira pseudonana* genome, initiated in 2002, was thought to be the start of a new period, but it is too early to define this period.

The first record of haptophyte algae might begin with Ehrenberg (1836), who discovered that chalk was composed of tiny crystallites that he considered to be formed by precipitation rather than biological activity (see Green and Jordan, 1994; Siesser, 1994). In the mid 1800s, a series of articles were concerned with the biological origin of coccoliths and coccospheres (Huxley, 1858; Wallich, 1860, 1861; Sorby, 1861; Carter, 1871; Wyville-Thomson, 1874), and the matter was resolved in 1898 when Murray and Blackman described and illustrated a dividing cell inside the coccosphere (see Green and Jordan, 1994; Siesser, 1994). The first description of the haptonema was by Scherffel (1901) when he described *Phaeocystis*, but he considered the haptonema to be a third flagellum. Pascher (1910, 1913, 1914) placed golden microalgae with two equal flagella into order Isochrysidales, class Chrysophyceae, and this included not only organisms we recognize today as haptophytes but also some of Synurophyceae and Chrysophyceae. Additional taxa were described in the years following Pascher's classification (e.g., *Prymnesium*, *Chrysochromulina*; Carter, 1937; Lacky, 1939), and with the advent of electron microscopy, many additional species were described (e.g., Parke et al., 1955; Manton and Leedale, 1969; Manton and Leadbeater, 1974). Electron microscopy also demonstrated the unique structure of the haptonema (Parke et al., 1955), unusual features of the Golgi apparatus (Manton, 1967), and ultrastructural differences between haploid and diploid phases of the life cycle (e.g., Parke and Adams, 1960). These differences led Christensen (1962) to propose a separate class, Haptophyceae, which he made approximately equal to Chrysophyceae, Xanthophyceae, Phaeophyceae, etc. Hibberd (1976) provided additional support for the separation of Haptophyceae, Cavalier-Smith (1986, 1989) divided Haptophyta into two classes, and most recently, Edvardsen et al. (2000) summarized the classification of Division Haptophyta, including several nomenclatural proposals to bring classification in accord with the IBCN.

**Currently recognized classes**—The taxonomic class is the primary currency for classifying heterokont algae. In large part, this stems from an inadequate understanding of phylogenetic relationships. Thus, some workers lump all classes into a single division, Heterokontophyta (e.g., Hoek, 1978; Hoek et al., 1995), whereas others raise classes to division level (e.g., Corliss, 1984). There are currently 17 recognized classes, and, except for the three diatom classes, all classes are listed in Tables 1–3. Diatoms are currently classified in Coscinodiscophyceae (centric diatoms), Fragilariophyceae (araphid pennates), and Bacillariophyceae (raphid pennates; Round et al., 1990). However, diatom classification will change soon because the two pennate classes form a monophyletic group, whereas centric diatoms form two clades (e.g., Medlin et al., 1996). Haptophyta are recognized as a division divided into two classes, Pavlovophyceae and Prymnesiophyceae (Cavalier-Smith, 1998; Edvardsen et al., 2000).

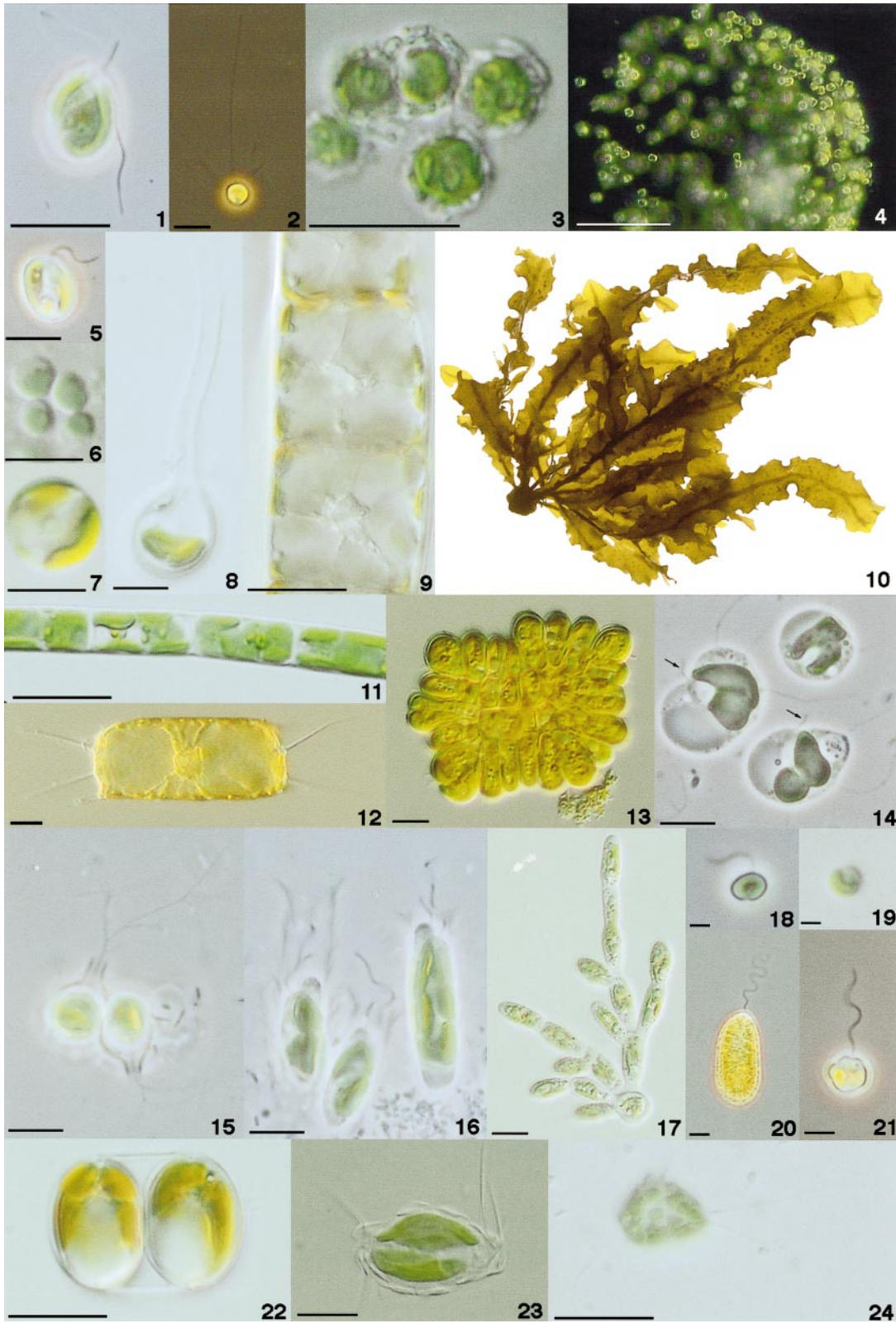
**Ecology**—Heterokont algae are found in almost all environments where life exists, but the occurrence varies widely among the classes. The ecological literature is extensive and impossible to summarize here; the references listed later are good sources for additional information. Bolidophyceae, Chrysomophyceae, Pelagophyceae, Pinguicophyceae, and Schizocladophyceae are only known from marine environments (Billard, 1984; Guillou et al., 1999a; Andersen and Preisig, 2002b; Kawachi et al., 2002b; Kawai et al., 2003). Phaeophyceae are almost exclusively marine organisms, but five freshwater genera are known (Bold and Wynne, 1985). Synurophyceae are probably restricted to freshwater, although a couple of dubious marine occurrences have been reported (Andersen and Preisig, 2002a). Chrysophyceae, Phaeothamniophyceae, and Xanthophyceae are predominately freshwater organisms, although a substantial number of xanthophytes are terrestrial (Ettl, 1978; Reith, 1980; Starmach, 1985; Kristiansen and Preisig, 2001; Hibberd, 1990b; Ettl and Gaertner, 1995; Bailey et al., 1998; Preisig and Andersen, 2002). Dictyochophyceae occur in both marine and freshwater habitats (Moestrup, 1995; Moestrup and O'Kelly, 2002), and Eustigmatophyceae occur in freshwater, marine, and terrestrial habitats (Hibberd, 1990a). Raphidophyceae are sharply divided into two groups, marine genera with fucoxanthin–violaxanthin type pigments, and freshwater genera with heteroxanthin–diatoxanthin type pigments (Table 2; Heywood, 1990; Potter et al., 1997; Heywood and Leedale, 2002). Finally, diatoms are found in all common habitats supporting life (Round et al., 1990). Regarding haptophytes, they are predominately marine, but several freshwater species are well known (Green and Leadbeater, 1994).

Diatoms are widely used as indicator species in paleoecological studies (for review, see Stoermer and Smol, 1999). Silica-scaled algae are also good indicator species (e.g., Siver, 1991; Smol, 1995). Heterokont and haptophyte classes contain toxic or harmful species. A number of diatoms are harmful to marine life, and domoic acid from *Pseudo-nitzschia*, concentrated in shellfish, has killed humans (see Fryxell and Hasle, 2003 for review). *Aureococcus* and *Aureoumbra* (Pelagophyceae) form coastal blooms that are harmful to marine invertebrates (Cosper et al., 1989; Buskey et al., 1997; Bricelj et al., 2001). *Chattonella* and *Heterosigma* (Raphidophyceae) are well-known fish killers (Okaichi, 1989; Hallegraeff and Hara, 2003). Also, *Chrysochromulina*, *Prymnesium*, and *Phaeocystis* (Prymnesiophyceae) are known to kill fish or be harmful to marine life (Moestrup and Thomsen, 2003).

A number of flagellate heterokont and haptophyte algae are mixotrophic, usually by phagocytosis, and many utilize organic molecules. The “biflagellate” Chrysophyceae, for which *Epipyxis* is the model system, may all be phagocytotic, and they have a sophisticated capturing mechanism that involves microtubules of the flagellar apparatus. Bacteria captured by flagella are pressed into a feeding basket near the flagellar bases at the anterior end of the cell (Andersen and Wetherbee, 1992; Wetherbee and Andersen, 1992). Phagocytosis also occurs in the haptophytes, in which *Chrysochromulina* is the model organism (Kawachi et al., 1991; Inouye and Kawachi, 1994). The haptonema captures food particles, wraps around the cell, and then particles are engulfed at the posterior end of the cell.

**Cell biology**—*Chloroplasts and their pigments*—The chloroplast structures of all heterokont algae and haptophytes share some features (Dodge, 1973). The chloroplast is surrounded





by the chloroplast endoplasmic reticulum, and thus four membranes separate the stroma from the cytosol. Each chloroplast lamella consists of three addressed thylakoids. Finally, although not strictly a chloroplast feature, the photosynthetic carbohydrate storage product is a  $\beta$ -1,3-linked glucan of small molecular size (20–50 glucose residues), which for osmotic reasons is stored in a vacuole outside the chloroplast.

Distinguishing features include the presence of a girdle lamella, which is a saclike three-thylakoid structure that encloses all other (sheet type) lamellae. Most heterokont classes (Eustigmatophyceae excepted) have a girdle lamella, but it is absent in Haptophyta (Table 1). In most heterokont classes as well as haptophytes, the outer membrane of the chloroplast endoplasmic reticulum is continuous with the outer membrane of the nucleus. The inner chloroplast endoplasmic reticulum is considered to be either the remnant plasmalemma of an ancient endosymbiotic event or derived from the outer nuclear envelope as well (by an out-folding model). Some heterokont algae lack a chloroplast endoplasmic reticulum–nuclear envelope continuity, and these include those diatoms with multiple chloroplasts, raphidophytes and synurophytes. A relationship with symbiotic bacteria occurs in the lumen of the chloroplast endoplasmic reticulum of the diatom *Pinnularia* (Schmid, 2003a, b). The bacteria are blocked from passing down the lumen of the endoplasmic reticulum to the nucleus. The bacteria also cause, or at least occupy, invaginations in the plastid, giving it an irregular margin.

Not all species have chloroplasts. Leucoplasts (unpigmented plastids) are present in some chrysophytes, e.g., *Paraphysomonas* and *Spumella* (Mignot, 1977; Preisig and Hibberd, 1982a, b, 1983). Recently, Sekiguchi et al. (2002) described the presence of leucoplasts in two colorless pedinellids, *Pteridomonas* and *Ciliophrys* (Dictyochophyceae), and they also amplified and sequenced the *rbcL* gene from these organisms. This provided clear evidence that the colorless taxa were derived from photosynthetic ancestors, falsifying an earlier hypothesis that the pigmented forms arose from colorless ancestors via an endosymbiotic event (Cavalier-Smith et al., 1995). A taxonomic reevaluation of pedinellids was subsequently published (Sekiguchi et al., 2003). Leucoplasts may be entirely absent in some heterokonts, e.g., *Picophagus* (Chrysophyceae; Guillou et al., 1999b), but recent cautions indicate that remnants of plastids may remain (Harper and Keeling, 2003). Colorless diatoms, especially *Nitzschia*, are known (Lewin and Lewin, 1967), but whether or not they have leucoplasts is unclear. Finally, *Sphaeropsis pascheri* Schiller (Chrysophyceae) was described as having cyanelles (Schiller, 1954); however, this light microscopic work has not been verified using electron microscopy or molecular techniques. This is apparently the only report of a cyanelle-bearing heterokont alga, and there are no reports of cyanelles in haptophytes.

Many heterokont swimming cells as well as some Pavlovophyceae have an eyespot that is located within the chloroplast or associated with it (e.g., Dodge, 1973; Green, 1980). Eyespots are part of the photoreceptor apparatus (also called the eyespot apparatus), shielding light so that the other elements can more precisely determine the direction of light (Foster and Smyth, 1980). In a wide variety of heterokont and haptophyte algae, one flagellum possesses an autofluorescent substance (flavin and pterin-like in brown algae) that plays a role in phototaxis (Müller et al., 1987; Kawai and Inouye, 1989; Kawai et al., 1996). In the typical case (most heterokont algae, Pavlovophyceae), the eyespot lies just inside the chloroplast in the area immediately adjacent to the mature flagellum. Eustigmatophytes have a large eyespot located outside the chloroplast but adjacent to the mature flagellum; this unusual eyespot is the basis of the class name. For a recent review, see Kawai and Kreimer (2000).

Brown algae produce two types of swimming cells, asexual zoospores and male (and sometimes female) gametes. Kawai et al. (1990, 1991) showed that swimming cells have phototactic responses to photosynthetically active wavelengths. Iken et al. (2001) described five different swimming patterns for *Hinckesia* by employing computer-assisted motion analysis. The patterns were associated with finding suitable attachment sites for settlement or with positive or negative reactions to certain environmental stimuli.

Chloroplasts function primarily for photosynthesis, and heterokont and haptophyte algae have a wide variety of light-harvesting pigments, many of which are photosynthetically active. Characterization of pigments has advanced dramatically in the past 50 years, and new techniques as well as more critical characterization of molecules have been significant. Nevertheless, pigment scientists have not always kept abreast of taxonomic changes, and relatively few organisms in each class have been critically studied (e.g., Jeffrey and Vesik, 1997). A summary of chloroplast pigments, by taxonomic class, is shown in Table 2, but the reader should keep in mind the limited taxon sampling. All heterokont and haptophyte algae, except Eustigmatophyceae, have one or more types of chlorophyll *c*, but variability and diversity probably exceeds that shown. These algae are rich in carotenoids, giving them a golden or brown color (Eustigmatophyceae, Xanthophyceae, some Raphidophyceae excepted). In addition to other roles (e.g., ultraviolet light protection, photosynthetic quenching), one or more photosynthetically active carotenoids are usually present (e.g., Alberte and Andersen, 1986; Porra et al., 1997).

*Cell coverings*—Heterokont algae have a wide range of cell coverings. Bolidophytes are naked flagellates (Guillou et al., 1999a); diatoms have siliceous frustules (Round et al., 1990); chrysomerophytes have cell walls (Billard, 1984); chryso-

←

Figs. 1–24. Haptophyte and heterokont algae. Figs. 1–4. Haptophyte algae. **1.** *Prymnesium* (Prymnesiophyceae). Scale bar = 10  $\mu$ m. **2.** *Chrysochromulina* (Prymnesiophyceae). Scale bar = 10  $\mu$ m. **3.** *Emiliania* (Prymnesiophyceae). Scale bar = 10  $\mu$ m. **4.** *Phaeocystis* (Prymnesiophyceae). Scale bar = 10  $\mu$ m. **5.** *Pavlova* (Pavlovophyceae). Scale bar = 5  $\mu$ m. Figs. 6–24. Heterokont algae. **6.** *Nannochloropsis* (Eustigmatophyceae). Scale bar = 1  $\mu$ m. **7.** *Pinguicoccus* (Pinguicophyceae). Scale bar = 5  $\mu$ m. **8.** *Polypodochrysis* (Pinguicophyceae). Scale bar = 5  $\mu$ m. **9.** *Pylaiella* (Phaeophyceae). Scale bar = 10  $\mu$ m. **10.** *Dictyopteris* (Phaeophyceae). Scale bar = 1 cm. **11.** *Tribonema* (Xanthophyceae). Scale bar = 10  $\mu$ m. **12.** *Odontella* (Bacillariophyta). Scale bar = 10  $\mu$ m. **13.** *Phaeoplaca* (Chrysophyceae). Scale bar = 10  $\mu$ m. **14.** *Chrysamoeba* (Chrysophyceae). Arrows = flagellum. Scale bar = 5  $\mu$ m. **15.** *Lagnion* (Chrysophyceae). Scale bar = 5  $\mu$ m. **16.** *Epipyxis* (Chrysophyceae). Scale bar = 5  $\mu$ m. **17.** *Phaeothamnion* (Phaeothamnioophyceae). Scale bar = 10  $\mu$ m. **18.** *Pelagomonas* (Pelagophyceae). Scale bar = 1  $\mu$ m. **19.** *Aureococcus* (Pelagophyceae). Scale bar = 1  $\mu$ m. **20.** *Chattonella* (Raphidophyceae). Scale bar = 10  $\mu$ m. **21.** *Pseudopedinella* (Dictyochophyceae). Scale bar = 5  $\mu$ m. **22.** *Halodiscus* (Bacillariophyta). Scale bar = 10  $\mu$ m. **23.** *Mallomonas* (Synurophyceae). Scale bar = 10  $\mu$ m. **24.** *Rhizochromulina* (Dictyochophyceae). Scale bar = 10  $\mu$ m.

TABLE 1. Chloroplast features of the heterokont and haptophyte algae. The eyespot of eustigmatophytes is located outside the chloroplast. Genophore type refers to the arrangement of plastid DNA (ring of DNA, scattered granules of DNA).

	Girdle lamella	Plastid-nucleus membrane connection	Eyespot	Genophore type
<b>Heterokont algae</b>				
Bacillariophyta	+	±	-	ring
Bolidophyceae	+	+	-	ring
Chrysomerophyceae	+	+	+	ring
Chrysophyceae	+	+	+	ring
Dictyochophyceae	+	+	-	scattered
Eustigmatophyceae	-	+	+ (outside)	ring
Pelagophyceae	+	+	-	scattered
Phaeophyceae	+	+	±	ring
Phaeothamniophyceae	+	+	+	ring
Pinguiphyceae	±	+	-	scattered
Raphidophyceae	±	-	-	scattered
Schizocladophyceae	+	+	+	ring
Synurophyceae	+	-	-	ring
Xanthophyceae	+	+	±	ring
<b>Haptophyta</b>				
Pavlovophyceae	-	+	+	scattered
Prymnesiophyceae	-	+	-	scattered

Note: + = present; - = absent; ± = present or absent.

phytes have cell walls, organic loricas, organic or silica scale cases, gelatinous coverings, and completely naked cells (Starmach, 1985; Kristiansen and Preisig, 2001; Preisig and Andersen, 2002); dictyochophytes have silica skeletons, organic scales, or naked cells (Moestrup, 1995; Moestrup and O'Kelly, 2002); eustigmatophytes have cell walls (Hibberd, 1990a); pelagophytes have cell walls, thecae, gelatinous coverings, and naked cells (Andersen and Preisig, 2002b); phaeophytes have cellulosic cell walls impregnated with alginates and often interconnected via plasmodesmata (Bisalputra, 1966; Poeschel and Stein, 1983); phaeothamniophytes have cell walls (Bailey et al., 1998); pinguiphytes have mineralized loricas, gelatinous coverings, or naked cells (Kawachi et al., 2002a, b, c);

raphidophytes are naked cells (Heywood, 1990; Heywood and Leedale, 2002); *Schizocladia* has cell walls without cellulose but impregnated with alginates (Kawai et al., 2003); synurophytes have bilaterally symmetrical silica scales glued together to form a highly organized scale case (Ludwig et al., 1996); xanthophytes have predominately cell walls, some with H-shaped overlapping sections, as well as plasmodial and naked forms (Hibberd, 1990b).

Although silica frustules of diatoms have long been studied for taxonomic purposes (e.g., Hustedt, 1928), new technology has allowed scientists to investigate the nonsiliceous components of the cell wall. Higgins et al. (2003) used atomic force microscopy to study the topology and properties of the mu-

TABLE 2. Chloroplast pigmentation of heterokont and haptophyte algae.

	Chlorophylls	Fuc	19'-hex	19'-but	Diato-dino	Viola	Hetero	Vauch
<b>Heterokont algae</b>								
Bacillariophyta	a, c <sub>1,2</sub> (c <sub>3</sub> )	+	+	-	+	-	-	-
Bolidophyceae	a, c <sub>1-3</sub>	+	+	-	+	-	-	-
Chrysomerophyceae	a, c <sub>1,2</sub>	+	-	-	-	+	-	-
Chrysophyceae	a, c <sub>1,2</sub>	+	+	-	-	+	-	-
Dictyochophyceae	a, c <sub>1,2</sub>	+	-	-	+	-	-	-
Eustigmatophyceae	a	-	-	-	-	+	-	+
Pelagophyceae	a, c <sub>1,2</sub>	+	(+)	+	+	-	-	-
Phaeophyceae	a, c <sub>1,2</sub>	+	-	-	-	+	-	-
Phaeothamniophyceae	a, c <sub>1,2</sub>	+	-	-	+	-	+	-
Pinguiphyceae	a, c <sub>1,2</sub>	+	-	-	-	+	-	-
Raphidophyceae-FW	a, c <sub>1,2</sub>	±	-	-	+	-	+	+
Raphidophyceae-Mar	a, c <sub>1,2</sub>	±	-	-	-	+	-	-
Schizocladophyceae	a, c (type ?)	+	?	?	?	?	?	?
Synurophyceae	a, c <sub>1</sub>	+	-	-	-	+	-	-
Xanthophyceae	a, c <sub>1,2</sub>	-	-	-	-	+	+	+
<b>Haptophyta</b>								
Pavlovophyceae	a, c <sub>1-3</sub>	+	+	+	+	-	-	-
Prymnesiophyceae	a, c <sub>1-3</sub>	+	+	+	+	-	-	-

Notes: Fuc = fucoxanthin; 19'-hex = 19'-hexanoyloxyfucoxanthin; 19'-but = 19'-butanoyloxyfucoxanthin; diato-dino = pigments of the diatoxanthin; diadinoxanthin cycle; viola = pigments of the violathanin; antheraxanthin; zeaxanthin cycle; hetero = heteroxanthin; vauch = vaucherioxanthin; + = present; - = absent; ± = present or absent; ? = unknown.



TABLE 3. Features of the flagellar apparatus of the heterokont and haptophyte algae.

	Tri-H	# flagella	TH	Flagellar beat	Lateral hairs	mt roots	Green flagellum	Parafagellar rod	Striated root
Heterokont algae									
Bacillariophyta	+	1,0	0	pulls	—	0	—	?	—
Bolidophyceae	+	2	0	pulls	—	0	?	—	—
Chrysomerothyceae	+	2	6 ↑	pulls	—	4	?	—	?
Chrysophyceae	+	2	4–6 ↑	pulls	+	2–4	+	—	+
Dictyochophyceae	+	1	0–2 ↓	pulls	—	0	—	+	—
Eustigmatophyceae	+	2,0	6 ↑	pulls	—	4	—	—	+
Pelagophyceae	±	2,1,0	0–2 ↓	pulls	—	0	—	+	—
Phaeophyceae	+	2	0	pulls	—	4	+	—	—
Phaeothamniophyceae	+	2	6 ↑	pulls	—	4	+	—	+
Pinguicophyceae	±	2,1,0	0,2 ↓	pulls, none?	—	3,4	±	—	+
Raphidophyceae	+	2	0	pulls	—	?	—	—	?
Schizocladophyceae	+	2	6 ↑	pulls	—	?	+	—	?
Synurophyceae	+	2,1	6–9 ↑	pulls	+	2	+	—	+
Xanthophyceae	+	2,0	2 × 6 ↑	pulls	—	4	+	—	+
Haptophyta									
Pavlovophyceae	—	2	0	pulls	—	2	—	—	—
Prymnesiophyceae	—	2	0	pushes, breast pull	—	4	+	—	—

Notes: Tri-H = tripartite tubular hairs; TH = transitional helix; mt roots = microtubular roots. Arrows (↑; ↓) indicate the position (distal, proximal) of the transitional helix with respect to the major transitional plate. + = present; — = absent; ± = present or absent; ? = unknown.

cilium layer that coats diatom frustules. They found two different types of mucilage nanostructure on two benthic species, and on a third species they demonstrated the complete absence of a mucilage layer. They also measured the adhesive-binding properties and elasticity properties of the polymer chains that make up the mucilage. Silicification in diatoms occurs in silica deposition vesicles that are shaped into the form of the final valve or girdle band (Simpson and Volcani, 1981; Schmid, 2003a, b). Silica scales and siliceous cysts of synurophytes and chrysophytes as well as the siliceous skeleton of *Dictyocha* (Dictyochophyceae) are also formed in silica deposition vesicles (Schnepf and Deichgräber, 1969; Mignot and Bruggerolle, 1982; Beech et al., 1990; Moestrup and Thomsen, 1990; Preisig, 1994). Despite the unusual nature of siliceous wall coverings as well as the similar silicification processes found among diatoms, chrysophytes, *Dictyocha*, and synurophytes, only Chrysophyceae and Synurophyceae appear to be closely related (see phylogeny section).

Parmales, a poorly known group of heterokont algae not discussed elsewhere in this paper, are tiny marine phytoplankters that are characterized by relatively large silica plates surrounding the protoplasm (Booth and Marchant, 1987, 1988; Kosman et al., 1993; Bravo-Sierra and Hernández-Becerril, 2003). The silicification process is not known for Parmales, but presumably it involves silica deposition vesicles. Parmales are known only from field samples, and their classification remains an enigma. They have been nominally classified in Chrysophyceae, but the lack of distinctive ultrastructural features, apparent absence of flagellate stages, no knowledge of photosynthetic pigments, and absence of gene sequences make an informed classification impossible.

Brown seaweeds (Phaeophyceae) include kelps, the largest and most structurally complex of heterokont algae. Of heterokont algae, they most resemble plants with regard to cell walls. Adjacent cells are often interconnected via plasmodesmata (Bisalputra, 1966; Pueschel and Stein, 1983), a feature not found in other heterokont algae. Biochemical studies provided evidence of intercellular transport, such as movement from the leafy fronds to the meristematic region (e.g., Cabello-

Pasini and Alberte, 2001). Important cell wall features that distinguish Phaeophyceae and Schizocladophyceae are the presence of cellulose and plasmodesmata in the walls of brown algae but the absence of both in *Schizocladia* (Kawai et al., 2003). Like brown algae, however, *Schizocladia* contains alginates that impregnate its (unknown) cell wall fibers.

Haptophytes also have a variety of cell coverings. Benthic stages of some have cell walls, coccolithophorids have calcified scales (usually mineralized onto organic scales) that are termed coccoliths, some have only organic scales, a silica-scaled prymnesiophyte was recently reported, some are surrounded by gelatinous material, and others are naked (see Green and Leadbeater, 1994; Winter and Siesser, 1994).

**Flagellar apparatus**—The typical swimming cell of heterokont algae has two flagella, a long immature flagellum and a short mature flagellum (Table 3). It is the marked and nearly consistent nature of these two flagella that defines the term heterokont. The control of flagellar length in heterokonts is unknown, but it may be similar to that for green algae (see Beech, 2003, for review). An immature flagellum is produced de novo during cell division, and the previous immature flagellum is transformed into a mature flagellum by a process termed flagellar transformation (e.g., Wetherbee et al., 1988). Thus, each typical cell has a longer immature flagellum bearing tripartite hairs and a shorter mature flagellum (see later for exceptions).

In heterokont algae, orientation of flagella on biflagellate cells varies greatly, from cells with two forward-directed flagella to those with one forward-directed flagellum and one trailing flagellum. Sometimes, but not always, orientation of basal bodies matches that of flagella. Mismatched direction occurs, for example, in zoospores of brown algae (basal bodies at 90°, flagella at 180°) and flagellate cells of Raphidophyceae and some Synurophyceae (basal bodies nearly parallel or 0°, flagella at 180°).

Flagellated vegetative cells of Bolidophyceae, Chrysophyceae, and Raphidophyceae as well as most vegetative cells of Synurophyceae and *Phaeomonas* (Pinguicophyceae) have two

typical flagella (e.g., Hibberd, 1976; Andersen, 1989; Heywood, 1990; Guillou et al., 1999b; Honda and Inouye, 2002). Similarly, flagellated zoospores or sperm of Chrysochromophyceae, Eustigmatophyceae, Phaeophyceae, Phaeothamniophyceae, Schizocladophyceae, and Xanthophyceae as well as some Pelagophyceae have two typical flagella (e.g., Billard, 1984; O'Kelly, 1989; Hibberd, 1990a, b; Lobban et al., 1995; Andersen et al., 1998b; Kawai et al., 2003). Conversely, the flagellate sperm of the diatoms as well as armored vegetative cells of Dictyochophyceae and some *Mallomonas* species (Synurophyceae) have only a single, immature flagellum, i.e., they lack a mature flagellum although they possess a mature basal body (e.g., Manton and von Stosch, 1966; Beech and Wetherbee, 1990a, b; Moestrup and Thomsen, 1990). Of these, the diatom sperm are noteworthy in that the flagellum axoneme has a 9 + 0 microtubular arrangement; in all other heterokonts, the flagellum has a typical 9 + 2 arrangement (Manton and von Stosch, 1966; Heath and Darley, 1972). In *Pelagomonas* (Pelagophyceae), only the immature flagellum is present, and no remnant of the mature flagellum basal body is present (Andersen et al., 1993). A paraxonemal rod lies between the axoneme and immature flagellar membrane of some Dictyochophyceae, *Pelagomonas* (Pelagophyceae), and possibly diatom sperm (Heath and Darley, 1972; Zimmermann et al., 1984; Moestrup and Thomsen, 1990; Andersen et al., 1993; Sekiguchi et al., 2003). Paraxonemal rods are absent in other heterokont algae, but a similar rod is present in some dinoflagellates. In *Glossomastix* (Pinguiphyceae), the single flagellum was designated the mature flagellum, with the accompanying basal body identified as immature (O'Kelly, 2002). In *Polypodochrysis* (Pinguiphyceae), a similar situation was found, but mature and immature structures were not identified (Kawachi et al., 2002c). In some members of Chrysophyceae, diatoms, Eustigmatophyceae, Pelagophyceae, Phaeothamniophyceae, and Xanthophyceae, flagellate stages are unknown.

The typical heterokont swimming cell has tripartite tubular hairs (= mastigonemes) arranged in two rows along the immature flagellum. The flagellum beat is sinusoidal, the hairs reverse the thrust of the flagellum, and therefore the beating flagellum pulls the cell forward (Sleigh, 1974, 1989). Members of Chrysophyceae and Synurophyceae have lateral fibers on the central shaft of the tripartite hair (e.g., Bouck, 1972; Andersen, 1989), but such lateral hairs are absent in all other heterokont algae. It may be worth noting that *Hemiselmis* (Cryptophyceae) also has short and long lateral filaments on its bipartite hairs (Bouck, 1972). In *Pelagomonas* (Pelagophyceae), hairs are bipartite, lacking the basal portion, but nevertheless, the hairs reverse thrust and swimming direction is unchanged (Andersen et al., 1993). There are no tripartite hairs on the emergent flagellum (whether designated mature or immature) of flagellate eggs of *Laminaria angustata* Kjellman (Phaeophyceae; Motomura and Sakai, 1988) or the zoospores of *Glossomastix* and *Polypodochrysis* (Pinguiphyceae); pinguiphyte zoospores glide along the substrate in amoeboid fashion (O'Kelly, 2002; Kawachi et al., 2002c). However, *Phaeomonas* (Pinguiphyceae) has typical tripartite tubular hairs on its immature flagellum (Honda and Inouye, 2002). The terms stramenopiles and stramenochromes have been applied to heterokont algae and their relatives (Patterson, 1989; Leipe et al., 1996), with both terms referring (strameno = straw) to tripartite flagellar hairs as a synapomorphic character. Stramenochromes is equal to heterokont algae, whereas stra-

menopiles includes heterokont algae, oömycetes, labyrinthulids, thraustochytrids and certain biflagellate protozoa. The bipartite hairs of *Pelagomonas* and the hairless flagella of *Glossomastix* and *Polypodochrysis* are presumed to be derived conditions.

Flagella (or flagellum) are putatively "anchored" in the cell with various structures that are generally referred to as the flagellar root apparatus. In broad terms, the flagellar root apparatus consists of microtubular roots, striated roots, and a complex transitional region. Because of considerable variability among heterokont algae, it is difficult to designate a typical organization (Andersen, 1991).

Microtubular roots are found in swimming cells of all classes, except diatoms, Dictyochophyceae, and *Pelagomonas* (Pelagophyceae; Andersen, 1991; Andersen et al., 1993; Moestrup, 1995; Sekiguchi et al., 2003). These are designated R<sub>1</sub>–R<sub>4</sub> (Andersen, 1987). The R<sub>1</sub> root typically consists of two to four microtubules and associated dense materials. It attaches to the basal body of the immature flagellum, and when viewed from the cell anterior, forms a clockwise arc around the anterior of the cell. In most groups, the arc consists of approximately 180 degrees (Andersen, 1991), but in Synurophyceae, R<sub>1</sub> forms a complete loop of 360 degrees (Andersen, 1985, 1989). In most organisms (Eustigmatophyceae excepted, see Santos and Leedale, 1991), R<sub>1</sub> nucleates numerous cytoskeletal microtubules that extend out and putatively form structural support for the cell (see Andersen, 1991). In some organisms (e.g., brown algae or phaeothamniophytes), a special set of cytoskeletal microtubules termed the bypassing rootlet, extend from the R<sub>1</sub> root past the basal bodies and into the central region of the cell (O'Kelly, 1989; Andersen et al., 1998b). The R<sub>2</sub> root typically consists of one to two microtubules that originate on the side opposite the immature basal body (with respect to the R<sub>1</sub> root) and probably terminates at or near the arc of the R<sub>1</sub> root (Andersen, 1991). This root is not always present. The R<sub>3</sub> root consists of approximately five to seven microtubules arranged in a trough or flat arrangement, and a layered structure is typically associated with microtubules. The R<sub>3</sub> root extends from the mature basal body and, when viewed from the cell anterior, curves in a counterclockwise arc (see Andersen, 1991). The length, curvature, and path for R<sub>3</sub> vary widely. For example, in the brown algal zoospores of *Laminaria*, the R<sub>3</sub> is short (O'Kelly, 1989), whereas in the phagotrophic chrysophyte *Epipyxis*, the R<sub>3</sub> forms a long, complex looping structure that is involved in the engulfing of bacteria (Andersen and Wetherbee, 1992). The R<sub>4</sub> microtubular root arises along the mature basal body opposite the R<sub>3</sub> root. The R<sub>4</sub> root is short, extending slightly away from but parallel to the mature basal body before terminating. Like the R<sub>2</sub> root, the R<sub>4</sub> root is apparently absent in many heterokont flagellates that possess microtubular roots.

A special striated flagellar root, also termed a rhizoplast, is found in swimming cells of Chrysophyceae, Eustigmatophyceae, Phaeothamniophyceae, Pinguiphyceae, Raphidophyceae, Synurophyceae, and Xanthophyceae (e.g., Hibberd, 1976, 1990a, b; Heywood, 1990; Andersen, 1991; Andersen et al., 1998b; Kawachi et al., 2002b). One end of this striated root lies along the nuclear envelope, and the other end is typically attached to proximal end of the immature basal body. However, in Synurophyceae, it attaches to both basal bodies (Andersen, 1985, 1989; Beech and Wetherbee, 1990b). The nucleus is positioned some distance from the basal bodies, and the striated root is probably contractile.

There has been no report of a rhizoplast-type striated root

in Bolidophyceae, diatoms, Dictyochophyceae, Pelagophyceae, Phaeophyceae, or Schizocladophyceae. Some Dictyochophyceae have a striated band that extends from the immature basal body to the nucleus, but because the nucleus is positioned against the basal bodies, it is unclear if this is a homologous structure (e.g., Koutoulis et al., 1988; Sekiguchi, 2003).

The transitional region of the flagellum, that area where the basal body connects to the flagellum, is also variable among heterokont algae (Preisig, 1989). A major transitional plate is found in all heterokont flagella, and in a few instances, a second transitional plate occurs. The major plate is located inside the nine pairs of microtubules so that it is distal to the third microtubule of the basal body triplets and proximal to the central two microtubules of the flagellar axoneme. There is a transitional helix above the major transitional plate in Chryso-merophyceae, Chrysophyceae, Eustigmatophyceae, Phaeothamniophyceae, Pinguiphyceae, Schizocladophyceae, and Synurophyceae; a double transitional helix occurs above the plate in Xanthophyceae. There is a transitional helix between major and minor plates in Dictyochophyceae, Pelagophyceae, and Pinguiphyceae. There is no report of a transitional helix of any kind in Bolidophyceae, diatoms, Phaeophyceae, and Raphidophyceae.

Haptophyte algae are biflagellate, but they completely lack tripartite tubular hairs. Pavlovophyceae sometimes have knob scales on the immature flagellum; these scales appear to reverse the thrust of the flagellum, thereby causing the cells to swim forward. Prymnesiophyceae lack even knob scales, and when their flagella beat with a sinusoidal wave, the cells are pushed backward. However, these organisms can also beat their flagella using the “breast stroke” action, similar to the green alga *Chlamydomonas*, and with this flagellar beat pattern, the cell swims forward.

The microtubular flagellar roots of haptophytes resemble those of heterokont algae. Typically, Prymnesiophyceae have four microtubular roots that correspond to heterokonts with regard to origin and general path through the cell. Pavlovophyceae differ in that the immature flagellum lacks microtubular roots. The unique structure of haptophytes is the haptonema, a microtubule-supported appendage that extends forward between the two flagella. The function of the haptonema includes the capture of prey particles in mixotrophic and heterotrophic species (Kawachi et al., 1991), attachment to surfaces, and various other poorly documented roles (Inouye and Kawachi, 1994). A fibrous root extends from the immature basal body in *Pavlova*, but fibrous roots are apparently absent in Prymnesiophyceae. The transitional region of haptophytes contains one or more transitional plates, but typical heterokont-like transitional helices are absent. *Pleurochrysis* (Prymnesiophyceae) has a helix, but its structure is different (Beech and Wetherbee, 1988).

**Mitosis**—Mitosis is known only for a few heterokont and haptophyte algae, and these few examples vary considerably. In diatoms (see Green, 1989, for references) and most Chrysophyceae (e.g., *Ochromonas*, *Poterochromonas*, *Uroglenopsis*; Slankis and Gibbs, 1972; Bouck and Brown, 1973; Schnepf et al., 1977; Tippit et al., 1980; Andersen, 1989), the nuclear envelope disperses during prophase. Spindle microtubules attach to either basal bodies (diatoms) or the striated flagellar roots (Chrysophyceae). However, in *Hydrurus* (Chrysophyceae), the nuclear envelope remains largely intact, with

openings at the poles (Vesk et al., 1984). *Pelagococcus* (Pelagophyceae; Vesk and Jeffrey, 1987), *Synura* (Synurophyceae; Andersen, 1989), and most Phaeophyceae (see Green, 1989, for references) behave similarly to *Hydrurus*. *Vaucheria* (Xanthophyceae) has an intact nuclear envelope at metaphase, and spindle microtubules form completely within the nuclear envelope (Ott and Brown, 1972). *Vacuolaria* (Raphidophyceae) is perhaps the most unusual situation, in which the nuclear envelope of daughter cells forms inside the dispersing old mother nuclear envelope (Heywood, 1990; Heywood and Leedale, 2002). Mitosis has not been reported for Bolidophyceae, Chryso-merophyceae, Dictyochophyceae, Eustigmatophyceae, Phaeothamniophyceae, Pinguiphyceae, and Schizocladophyceae. Among haptophytes, mitosis has been described for *Pavlova* (Pavlovophyceae) as well as for *Emiliania*, *Chrysochromulina*, *Imantonia*, *Isochrysis*, *Pleurochrysis*, and *Prymnesium* (Prymnesiophyceae; Manton, 1964; Stacey and Pienaar, 1980; Hori and Inouye, 1981; Hori and Green, 1985a, b, c; Green and Hori, 1988; Green et al., 1989). The spindle is U- or V-shaped in *Pavlova* but is straight in Prymnesiophyceae. In general, the nuclear envelope disperses during prophase but is often replaced with rough ER during metaphase; see Green (1989) and Hori and Green (1994) for further details.

**Other ultrastructural features**—All heterokonts and haptophytes have mitochondria with tubular cristae (Taylor, 1976; Stewart and Mattox, 1980). Heterokont algae have typical Golgi bodies, and in most classes (Dictyochophyceae excepted), Golgi bodies are anterior to the nucleus, with cis-cisternae adjacent the nuclear envelope (e.g., Hibberd, 1976). Haptophytes typically have Golgi bodies that are anteriorly adjacent the nucleus, but they are oriented at 90° so that the cis-trans axis lies parallel to the nuclear envelope (e.g., Manton, 1967). Furthermore, cisternae are unusually inflated. Brown algae often contain numerous vesicles of phenolic-type compounds, and these structures are referred to as physodes. Mucocysts are common in Raphidophyceae (Heywood, 1990; Heywood and Leedale, 2002), and various mucosal vesicles occur in some members of Chryso-merophyceae (Billard, 1984) and Chrysophyceae (e.g., Hibberd, 1970; Mignot, 1977; Andersen, 1982). Haptophytes are characterized by a peripheral endoplasmic reticulum, which lies just beneath the plasmalemma in most areas of the cell (flagellar region excluded; e.g., Hibberd, 1976; Beech and Wetherbee, 1988). It has been suggested that the peripheral endoplasmic reticulum of haptophytes is homologous to alveoli of ciliates, amphiasmal vesicles of dinoflagellates, the inner membrane complex of apicomplexans, the periplast of cryptophytes, and possibly mucosal structures of heterokont algae (Daugbjerg and Andersen, 1997b; Cavalier-Smith, 2002; Andersen, 2004). If these are truly homologous structures, they would be a synapomorphic character for chromalveolates.

**Phylogenetic relationships**—Phylogenetic relationships of heterokont algae are still largely unresolved. Light microscopy provided few characters that could be used, and the one dominating relationship, Pascher's (1914) division Chrysophyta (classes Bacillariophyceae sensu lato, Chrysophyceae and Xanthophyceae) was quickly demolished when electron microscopy reached widespread use. Cladistic analyses were attempted (e.g., Hibberd, 1979; Lipscomb, 1989; Andersen, 1991; Williams, 1991), but these suffered from a lack of



knowledge of homologous structures. Molecular phylogenetic analyses have made some progress. An early study showed that a heterokont alga was related to an oömycete fungus (Gundersen et al., 1987), bringing further support to a growing consensus that photosynthetic and nonphotosynthetic heterokonts formed a clade (e.g., Cavalier-Smith, 1986). Another early study showed that Xanthophyceae and Phaeophyceae were closely related, as were Chrysophyceae and Synurophyceae; however, the two clades were unrelated (Ariztia et al., 1991). These molecular data provided perhaps the final evidence that Pascher's Chrysophyta was not a natural group. A total evidence approach, using ultrastructural, biochemical, and molecular data, showed that Dictyochophyceae and Pelagophyceae were closely related to each other but distantly related to Chrysophyceae in which species of the former two classes were once classified (Saunders et al., 1995). Furthermore, this study indicated that these classes may be related to diatoms, forming a clade of organisms with reduced flagellar apparatuses. One subsequent total evidence analysis also provided support for this idea (Sorhannus, 2001). To date, molecular phylogenetic analyses including most or all heterokont algal classes have been based on either the 18S rRNA or the *rbcL* gene. Other genes have been examined, e.g., the fucoxanthin/chlorophyll photosystem-I- and -II-binding proteins (Caron et al., 1996; Green and Durnford, 1996), the alpha-tubulin gene (Keeling and Doolittle, 1996), large subunit (LSU) rRNA gene (Van der Auwera and De Wachter, 1996; Ben Ali et al., 2001), the GAPDH gene (Fast et al., 2001; Harper and Keeling, 2003), plastid *psaA*, *psbA*, 16S rRNA, *rbcL* and *tufA* genes (Medlin et al., 1997; Yoon et al., 2002a, b), and the type II fatty acid synthetase gene (Ryall et al., 2003). However, in all cases, taxon sampling was limited, omitting most heterokont algal classes and often including only one to three taxa for classes that were studied.

Two recent studies have combined these more extensively sampled genes (SSU rRNA, *rbcL*; Sorhannus, 2001; Goertzen and Theriot, 2003), and the Sorhannus study also included partial LSU rRNA, ultrastructural, and biochemical data. From these two studies, as well as many other studies that separately examined SSU rRNA and *rbcL* sequences, a few consensus relationships can be identified. Three two-class clades, Chrysophyceae/Synurophyceae, Dictyochophyceae/Pelagophyceae, Bolidophyceae/diatoms, are always recovered. However, there is weak support (e.g., <50% bootstrap values) and no consensus regarding relationships among these pairs of classes. Phaeophyceae and Xanthophyceae are closely related, but when taxa of Chrysomerophyceae, Phaeothamniophyceae, and Schizocladophyceae are added, the Phaeophyceae/Xanthophyceae relationship is weakened or disrupted (e.g., Bailey et al., 1998; Kawai et al., 2003). Eustigmatophyceae, Pinguiphyceae, and Raphidophyceae have no clear relationship among themselves or with other heterokont classes (e.g., Potter et al., 1997; Andersen et al., 1998a; Kawachi et al., 2002b). Figure 25 illustrates a phylogenetic tree constructed from a combined analysis of SSU rRNA and *rbcL* genes from heterokonts, haptophytes, alveolates, cryptophytes, and rhodophytes. This tree is poorly resolved when compared to trees from a *rbcL* gene only analysis (not shown), but the nonphotosynthetic taxa cannot be included in the *rbcL* analysis.

The two classes of haptophyte algae have a sister relationship in phylogenetic analyses (e.g., Edvardsen et al., 2000), but the relationship of Haptophyta to other protists is unresolved in SSU rRNA and *rbcL* phylogenetic analyses. How-

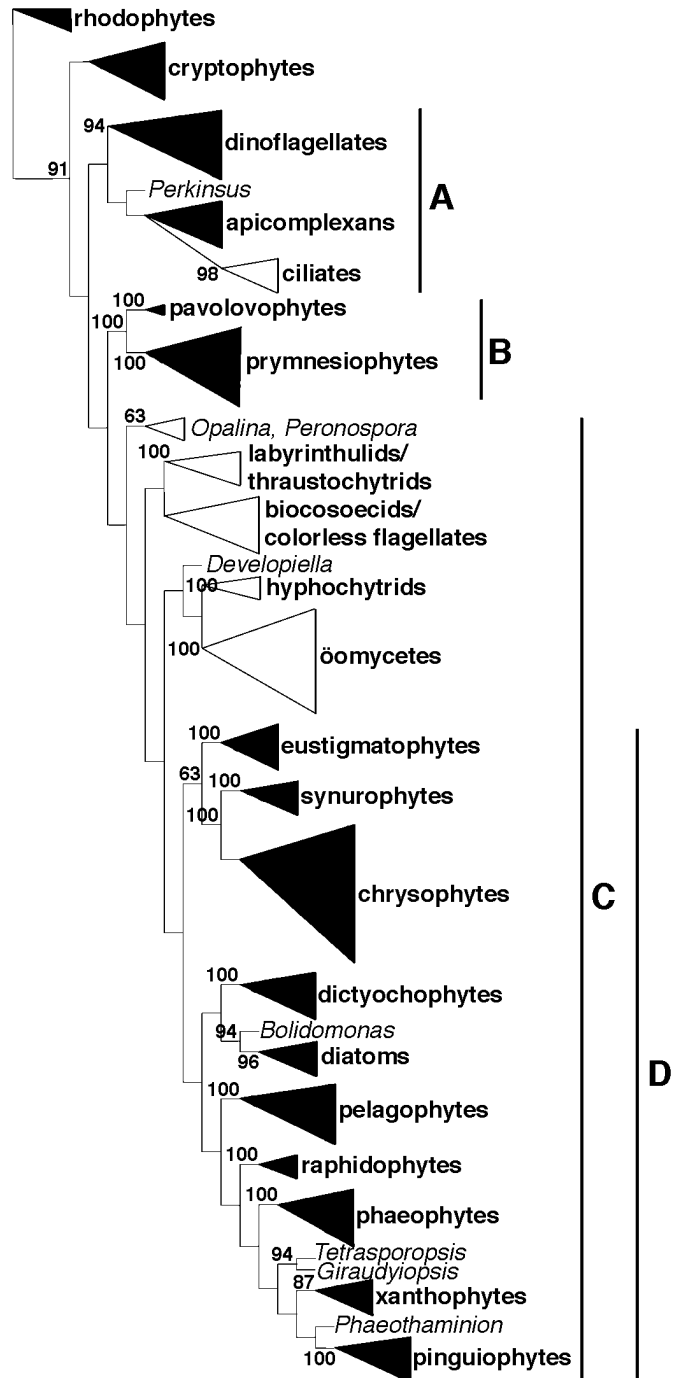


Fig. 25. Single most parsimonious tree (one of three) from a mixed (nucleotide and amino acid) TNT (Tree Analysis using New Technology, version 1.0, by Goloboff, Farris and Nixon, website: <http://www.cladistics.org/downloads/webtnt.html>) analysis of the concatenated SSU rRNA and *rbcL* genes. Most SSU rRNA sequences were obtained in an aligned form from the European Ribosomal RNA Database (website: <http://www.psb.ugent.be/rRNA/index.html>); a few additional taxa (e.g., Pinguiphyceae and Phaeothamniophyceae) were added and aligned by eye. The *rbcL* genes were primarily obtained from GenBank; a few Chrysophyceae were from our laboratory. The *rbcL* gene was converted from nucleotides to amino acids. 1000 bootstrap replicates were conducted and the percentage support is shown for all nodes with >50% support. A = alveolate taxa, B = haptophyte taxa, C = all heterokont taxa, and D = heterokont algae. Triangle height is proportional to number of taxa. Solid triangles represent groups with taxa known to possess plastids.

ever, recent studies using other genes, albeit with limited taxa and few classes, are beginning to support a chromalveolate assemblage. That is, Cryptophyceae, Haptophyta, alveolates (dinoflagellates, ciliates, apicomplexans), and heterokont algae are perhaps related, but the branching order is still unclear (e.g., Fast et al., 2001; Yoon et al., 2002a, b; Harper and Keeling, 2003; Ryall et al., 2003). The geological time for the origin of the chromalveolates was placed at 1300 million years ago (Yoon et al., 2004).

Nonpigmented heterokonts are close relatives of heterokont algae, but no details are provided here. Blackwell and Powell (2000) provided an excellent review. Some nonpigmented flagellates are described by Moestrup (2002) and Patterson (2002).

**Unity and diversity**—Heterokont and haptophyte algae share the following features: mitochondria with tubular cristae; an extraplasmidic carbohydrate storage product consisting of short  $\beta$ -1,3-linked glucan chains; a plastid with three adpressed thylakoids internally and two endoplasmic reticulum membranes externally; photosynthesis predominating; most organisms with chlorophylls *a* and *c*. These features are also shared by a number of other protist groups and therefore cannot be considered synapomorphic characters. Heterokont algae are united only by the presence of tripartite tubular hairs on the immature flagellum. This feature is shared with nonphotosynthetic heterokonts and perhaps the bipartite hairs of cryptophytes. Unifying morphological characters define heterokont algal classes, but establishing homologous characters has been difficult, restraining efforts to establish phylogenetic relationships among classes. Molecular analyses, based upon one to a few genes, have indicated some phylogenetic relationships, but considerably more molecular and morphological advances will be required before consensus is reached on their broad phylogenetic relationships. Similarly, the pendulum continues to swing regarding opinions about the relationship between haptophyte and heterokont algae. The uncertain phylogenetic relationships for other related protistan groups (e.g., alveolates, cryptophytes, cercozoans) confound the problem.

Despite our limited knowledge about their phylogenetic relationships, the heterokont algae are certainly a large and diverse group of living organisms. There are many species of diatoms, with estimates of up to a million or more species yet to be described (Round et al., 1990). Heterokont algae range in size from eustigmatophyte and pelagophyte picoplankters ( $\sim 1 \mu\text{m}$ ) to brown algal kelp (100 m in length). Cell coverings include cellulosic walls, glass walls, organic and mineralized scales, organic and mineralized loricas, and gelatinous substances. The flagellar apparatus is highly variable, to the point that homologous structures are difficult to establish. Similarly, haptophyte algae are diverse, although more fossil species are known than living species. Conversely, Schizocladophyceae contains a single species, and Bolidophyceae, Chrysomero-phyceae, Eustigmatophyceae, Pinguicophyceae, and Raphidophyceae have fewer than 25 described species. At present, it is unclear whether these classes are ancient and consist of a few remnant species or if they are newly evolved groups that have not yet radiated.

Although studies in nuclear genes have been initiated (e.g., Fast et al., 2001; Yoon et al., 2002a, b; Harper and Keeling, 2003; Ryall et al., 2003; Yoon et al., 2004), a greater use of multiple nuclear genes in a wide range and large number of photosynthetic and nonphotosynthetic heterokonts and haptophytes is necessary for a better understanding of their evolutionary relationships. This task will require substantial work because there are many classes of heterokont algae, and the nonalgal heterokonts are equally challenging. Phylogenetic relationships of heterokont and haptophyte algae are fertile ground that has been barely scratched, and much exciting work remains in this diverse group.

phytes is necessary for a better understanding of their evolutionary relationships. This task will require substantial work because there are many classes of heterokont algae, and the nonalgal heterokonts are equally challenging. Phylogenetic relationships of heterokont and haptophyte algae are fertile ground that has been barely scratched, and much exciting work remains in this diverse group.

#### LITERATURE CITED

- ALBERTE, R. S., AND R. A. ANDERSEN. 1986. Antheraxanthin, a light-harvesting carotenoid found in a chromophyte alga. *Plant Physiology* 80: 583–587.
- ANDERSEN, R. A. 1982. A light and electron microscopical investigation of *Ochromonas sphaerocystis* Matvienko (Chrysophyceae): the statospore, vegetative cell and its peripheral vesicles. *Phycologica* 21: 390–398.
- ANDERSEN, R. A. 1985. The flagellar apparatus of the golden alga *Synura uvella*: four absolute orientations. *Protoplasma* 128: 94–106.
- ANDERSEN, R. A. 1987. Synurophyceae classis nov., a new class of algae. *American Journal of Botany* 74: 337–353.
- ANDERSEN, R. A. 1989. The Synurophyceae and their relationship to other golden algae. In J. Kristiansen, G. Cronberg, and U. Geissler [eds.], *Chrysophytes developments and perspectives. Nova Hedwigia Beiheft* 95: 1–26.
- ANDERSEN, R. A. 1991. The cytoskeleton of chromophyte algae. *Protoplasma* 164: 143–159.
- ANDERSEN, R. A. 2004. A historical review of heterokont phylogeny. *The Japanese Journal of Phycology* 52: 153–162.
- ANDERSEN, R. A., R. W. BRETT, D. POTTER, AND J. P. SEXTON. 1998a. Phylogeny of the Eustigmatophyceae based upon the 18S rRNA gene, with emphasis on *Nannochloropsis*. *Protist* 149: 61–74.
- ANDERSEN, R. A., D. POTTER, R. R. BIDIGARE, M. LATASA, K. ROWAN, AND C. J. O'KELLY. 1998b. Characterization and phylogenetic position of the enigmatic golden alga *Phaeothamnion confervicola*: ultrastructure, pigment composition and partial SSU rDNA sequence. *Journal of Phycology* 34: 286–298.
- ANDERSEN, R. A., AND H. PREISIG. 2002a. Synurophyceae. In J. J. Lee, G. F. Leedale, and P. C. Bradbury [eds.], *An illustrated guide to the protozoa*, 2nd ed., vol. 2, 759–775. Society of Protozoologists, Lawrence, Kansas, USA.
- ANDERSEN, R. A., AND H. PREISIG. 2002b. Pelagophyceae. In J. J. Lee, G. F. Leedale, and P. C. Bradbury [eds.], *An illustrated guide to the protozoa*, 2nd ed., vol. 2, 733–743. Society of Protozoologists, Lawrence, Kansas, USA.
- ANDERSEN, R. A., G. W. SAUNDERS, M. P. PASKIND, AND J. P. SEXTON. 1993. Ultrastructure and 18S rRNA gene sequence for *Pelagomonas calceolata* gen. et sp. nov. and the description of a new algal class, the Pelagophyceae classis nov. *Journal of Phycology* 29: 701–715.
- ANDERSEN, R. A., Y. VAN DE PEER, D. POTTER, J. P. SEXTON, M. KAWACHI, AND T. LAJEUNESSE. 1999. Phylogenetic analysis of the SSU rRNA from members of the Chrysophyceae. *Protist* 150: 71–84.
- ANDERSEN, R. A., AND R. WETHERBEE. 1992. Microtubules of the flagellar apparatus are active during prey capture in the chrysophyte alga *Epi-pyxix pulchra*. *Protoplasma* 166: 8–20.
- ARCHIBALD, A. R., W. L. CUNNINGHAM, D. J. MANNERS, AND J. R. STARK. 1963. Studies on the metabolism of Protozoa. 10. The molecular structure of reserve polysaccharides from *Ochromonas malhamensis* and *Per-anema trichophorum*. *Biochemical Journal* 88: 444–451.
- ARIZTIA, E. V., R. A. ANDERSEN, AND M. L. SOGIN. 1991. A new phylogeny for chromophyte algae using 16S-like rRNA sequences from *Mallomonas papillosa* (Synurophyceae) and *Tribonema aequale* (Xanthophyceae). *Journal of Phycology* 27: 428–436.
- BAILEY, J. C., R. R. BIDIGARE, S. J. CHRISTENSEN, AND R. A. ANDERSEN. 1998. Phaeothamniophyceae classis nova: a new lineage of chromophytes based upon photosynthetic pigments, *rbcl* sequence analysis and ultrastructure. *Protist* 149: 245–263.
- BEECH, P. L. 2003. The long and the short of flagellar length control. *Journal of Phycology* 39: 837–839.
- BEECH, P. L., AND R. WETHERBEE. 1988. Observations on the flagellar apparatus and peripheral endoplasmic reticulum of the coccolithophorid *Pleurochrysis carterae* (Prymnesiophyceae). *Phycologia* 27: 142–158.
- BEECH, P. L., AND R. WETHERBEE. 1990a. Direct observations on flagellar

- transformation in *Mallomonas splendens* (Synurophyceae). *Journal of Phycology* 26: 90–95.
- BEECH, P. L., AND R. WETHERBEE. 1990b. The flagellar apparatus of *Mallomonas splendens* (Synurophyceae) at interphase and its development during the cell cycle. *Journal of Phycology* 26: 95–111.
- BEECH, P. L., R. WETHERBEE, AND J. D. PICKETT-HEAPS. 1990. Secretion and deployment of bristles in *Mallomonas splendens* (Synurophyceae). *Journal of Phycology* 26: 112–122.
- BEN ALI, A., R. DE BAERE, G. VAN DER AUWERA, R. DE WACHTER, AND Y. VAN DE PEER. 2001. Phylogenetic relationships among algae based on complete large-subunit rRNA sequences. *International Journal of Systematic and Evolutionary Microbiology* 51: 737–749.
- BHATTACHARYA, D., L. MEDLIN, P. O. WAINRIGHT, E. V. ARIZTIA, C. BIBEAU, S. K. STICKLE, AND M. L. SOGIN. 1992. Algae containing chlorophylls *a* + *c* are paraphyletic: molecular evolutionary analysis of the Chromophyta. *Evolution* 46: 1801–1817.
- BILLARD, C. 1984. Recherches sur les Chrysophyceae marines de l'ordre des Sarcinochrysidales. Biologie, systématique, phylogénie. Ph.D. dissertation, l'Université de Caen, Caen, France.
- BISALPUTRA, T. 1966. Electron microscopic study of the protoplasmic continuity in certain brown algae. *Canadian Journal of Botany* 44: 89–93.
- BJØRNLAND, T., AND S. LIAAEN-JENSEN. 1989. Distribution patterns of carotenoids in relation to chromophyte phylogeny and systematics. In J. C. Green, B. S. C. Leadbeater, and W. L. Diver [eds.], The chromophyte algae: problems and perspectives. Systematics Association Special Volume 38: 37–60. Clarendon Press, Oxford, UK.
- BLACKMAN, F. F. 1900. The primitive algae and the flagellata. An account of modern work bearing on the evolution of the algae. *Annals of Botany* 14: 647–688.
- BLACKWELL, W. H., AND M. J. POWELL. 2000. A review of group filiation of stramenopiles, additional approaches to the question. *Evolutionary Theory* 12: 49–88.
- BOLD, H. C., AND M. J. WYNNE. 1985. Introduction to the algae: structure and reproduction, 2nd ed. Prentice-Hall, Inc., Englewood Cliffs, New Jersey, USA.
- BOOTH, B. C., AND H. J. MARCHANT. 1987. Parmales, a new order of marine Chrysophyceae, with the descriptions of three new genera and seven new species. *Journal of Phycology* 23: 245–260.
- BOOTH, B. C., AND H. J. MARCHANT. 1988. Triparmaceae, a substitute name for a family in the Order Parmales (Chrysophyceae). *Journal of Phycology* 24: 124.
- BOUCK, G. B. 1972. Architecture and assembly of mastigonemes. In E. J. DuPraw [ed.], Advances in cell and molecular biology, vol. 2, 237–271. Academic Press, New York, New York, USA.
- BOUCK, G. B., AND D. L. BROWN. 1973. Microtubule biogenesis and cell shape in *Ochromonas*. I. The distribution of cytoplasmic and mitotic microtubules. *Journal of Cell Biology* 56: 340–359.
- BOURRELLY, P. 1957. Recherches sur les Chrysophycées. Morphologie, Phylogénie, Systématique. *Revue Algologique Mémoire Hors-Série* 1: 1–412.
- BRAVO-SIERRA, E., AND D. U. HERNÁNDEZ-BECERRIL. 2003. Parmales (Chrysophyceae) form the Gulf of Tehuantepec, Mexico, including the description of a new species, *Tetraparma insecta* sp. nov., and a proposal to the taxonomy of the group. *Journal of Phycology* 39: 577–583.
- BRICELJ, V. M., S. P. MACQUARRIE, AND R. A. SCHAFFNER. 2001. Differential effects of *Aureococcus anophagefferens* isolates (“brown tide”) in unialgal and mixed suspensions on bivalve feeding. *Marine Biology* 139: 605–615.
- BUSKEY, E. J., P. A. MONTAGNA, A. F. AMOS, AND T. E. WHITLEDGE. 1997. Disruption of grazer populations as a contributing factor to the initiation of the Texas brown tide algal bloom. *Limnology and Oceanography* 42: 1215–1222.
- CABELO-PASINI, A., AND R. S. ALBERTE. 2001. Expression of carboxylating enzymes in *Laminaria setchellii* (Phaeophyceae). *Phycologia* 40: 351–358.
- CARON, L., D. DOUADY, QUINET-SZELY, S. DEGOËR, AND C. BERKALOFF. 1966. Gene structure of a chlorophyll *a/c* binding protein from a brown alga: presence of an intron and phylogenetic implications. *Journal of Molecular Evolution* 43: 270–280.
- CARTER, H. J. 1871. On *Melobesia unicellularis*, better known as the coccolith. *Annals and Magazine of Natural History, series 4* 7: 184–189.
- CARTER, N. 1937. New or interesting algae from brackish water. *Archiv für Protistenkunde* 90: 1–68.
- CAVALIER-SMITH, T. 1986. The kingdom Chromista: origin and systematics. In F. E. Round and D. J. Chapman [eds.], Progress in phycological research, vol. 4, 309–347. BioPress Ltd., Bristol, UK.
- CAVALIER-SMITH, T. 1989. The kingdom Chromista. In J. C. Green, B. S. C. Leadbeater, and W. L. Diver [eds.], The chromophyte algae: problems and perspectives, Systematics Association Special Volume 38, 381–407. Clarendon Press, Oxford, UK.
- CAVALIER-SMITH, T. 1998. A revised six-kingdom system of life. *Biological Reviews* 73: 203–266.
- CAVALIER-SMITH, T. 2002. The phagotrophic origin of eukaryotes and phylogenetic classification of Protozoa. *International Journal of Systematic and Evolutionary Microbiology* 52: 297–354.
- CAVALIER-SMITH, T., E. E. CHAO, AND M. T. E. P. ALLSOPP. 1995. Ribosomal RNA evidence for chloroplast loss within Heterokonta: pedinellid relationships and a revised classification of ochristan algae. *Archiv für Protistenkunde* 145: 209–220.
- CHADEFAUD, M. 1950. Les cellules nageuses des Algues dans l'embranchement des Chromophycées. *Comptes Rendus de l'Académie des Sciences, Paris* 231: 788–790.
- CHRISTENSEN, T. 1962. Alger. In T. W. Böcher, M. C. Lange, and T. Sørensen [eds.], Botanik, Bd. 2, Systematisk Botanik Number 2, 1–178. Munksgaard, Copenhagen, Denmark.
- CORLISS, J. O. 1984. The kingdom Protista and its 45 phyla. *BioSystems* 17: 85–126.
- CORRENS, C. 1892. Über eine neue braune Süßwasserualge, *Naegeliella flagellifera* nov. gen. et spec. *Berichte der Deutschen botanischen Gesellschaft* 10: 629–636.
- COSPER, E. M., W. DENNISON, A. MILLIGAN, E. F. CARPENTER, C. LEE, J. HOLZAPFEL, AND L. MILANESE. 1989. An examination of the environmental factors important to initiating and sustaining “brown tide” blooms. In E. M. Cosper, V. M. Bricelj, and E. J. Carpenter [eds.], Novel phytoplankton blooms: causes and impacts of recurrent brown tides and other unusual blooms, 317–340. Springer-Verlag, Berlin, Germany.
- DAUGBJERG, N., AND R. A. ANDERSEN. 1997a. A molecular phylogeny of the heterokont algae based on analyses of chloroplast-encoded *rbcL* sequence data. *Journal of Phycology* 33: 1031–1041.
- DAUGBJERG, N., AND R. A. ANDERSEN. 1997b. Phylogenetic analyses of the *rbcL* sequences from haptophytes and heterokont algae suggest their chloroplasts are unrelated. *Molecular Biology and Evolution* 14: 1242–1251.
- DODGE, J. D. 1973. The fine structure of algal cells. Academic Press, London, UK.
- EDVARDSEN, B., W. EIKREM, J. C. GREEN, R. A. ANDERSEN, S. Y. MOON-VAN DER STAAY, AND L. K. MEDLIN. 2000. Phylogenetic reconstructions of the Haptophyta inferred from 18S ribosomal DNA sequences and available morphological data. *Phycologia* 39: 19–35.
- EHRENBERG, C. G. 1836. Bermerkungen über feste mikroskopische, anorganische Formen in den erdigen und derben Mineralien. *Bericht über die Verhandlungen der Königlich Preussischen Akademie der Wissenschaften, Berlin* 1836: 84–85.
- EHRENBERG, C. G. 1838. Die Infusionstierchen als vollkommene Organismen. In *Blück in das tiefere organische Leben der Natur*. L. Voss, Leipzig, Germany.
- ETTL, H. 1978. Xanthophyceae, part 4. In H. Ettl, H. J. Gerloff, and H. Heynig [eds.], Süßwasserflora von Mitteleuropa, Bd. 3, 1. Teil, Gustav Fischer, Stuttgart, Germany.
- ETTL, H., AND G. GAERTNER. 1995. Syllabus der Boden-, Luft- und Flechtentalgen. Gustav Fischer Verlag, Stuttgart, Germany.
- FAST, N. M., J. C. KISSINGER, D. S. ROOS, AND P. J. KEELING. 2001. Nuclear-encoded, plastid targeted genes suggest a single common origin for apicomplexan and dinoflagellate plastids. *Molecular Biology and Evolution* 18: 418–426.
- FOSTER, K. W., AND R. D. SMYTH. 1980. Light antennas in phototactic algae. *Microbiological Reviews* 44: 572–630.
- FRITSCH, F. E. 1935. The structure and reproduction of the algae, vol. 1. Cambridge University Press, Cambridge, UK.
- FRYXELL, G. A., AND G. R. HASLE. 2003. Taxonomy of harmful diatoms. In G. M. Hallegraeff, D. M. Anderson, and A. D. Cembella [eds.], Manual on harmful marine microalgae, 465–509. UNESCO Publishing, Paris, France.
- GOERTZEN, L. R., AND E. C. THERIOT. 2003. Effect of taxon sampling, character weighting, and combined data on the interpretation of relationships among the heterokont algae. *Journal of Phycology* 39: 423–439.
- GREEN, J. C. 1980. The fine structure of *Pavlova pinguis* Green and a pre-



- liminary survey of the Order Pavloales (Prymnesiophyceae). *British Phycological Journal* 15: 151–191.
- GREEN, J. C. 1989. Relationships between the chromophyte algae: the evidence from studies of mitosis. In J. C. Green, B. S. C. Leadbeater, and W. L. Diver [eds.], *The chromophyte algae: problems and perspectives*. Systematics Association Special Volume 38, 189–206. Clarendon Press, Oxford, UK.
- GREEN, J. C., AND T. HORI. 1988. The fine structure of *Pavlova* (Prymnesiophyceae). *Canadian Journal of Botany* 66: 1497–1509.
- GREEN, B. R., AND D. G. DURNFORD. 1996. The chlorophyll-carotenoid proteins of oxygenic photosynthesis. *Annual Review of Plant Physiology and Plant Molecular Biology* 47: 685–714.
- GREEN, J. C., AND R. W. JORDAN. 1994. Systematic history and taxonomy. In J. C. Green and B. S. C. Leadbeater [eds.], *The haptophyte algae*, 1–21. Oxford Science Publications, Oxford, UK.
- GREEN, J. C., AND B. S. C. LEADBEATER [EDS.]. 1994. The haptophyte algae. Systematics Association Special Volume 51, 1–446. Clarendon Press, Oxford, UK.
- GREEN, J. C., B. S. C. LEADBEATER, AND W. L. DIVER [EDS.]. 1989. The chromophyte algae: problems and perspectives. Systematics Association Special Volume 38, 1–429. Clarendon Press, Oxford, UK.
- GUILLOU, L., M.-J. CHRÉTIENNOT-DINET, L. K. MEDLIN, J. CLAUSTRÉ, S. LOISEAUX-DE GOËR, AND D. VAULOT. 1999a. *Bolidomonas*: a new genus with two species belonging to a new algal class, Bolidophyceae (Heterokonta). *Journal of Phycology* 35: 368–381.
- GUILLOU, L., M.-J. CHRÉTIENNOT-DINET, S. Y. MOON-VAN DER STAAY, S. BOULBEN, AND D. VAULOT. 1999b. *Symbiomonas scintillans* gen. et sp. nov. and *Picophagus flagellatus* gen. et sp. nov. (Heterokonta): two new heterotrophic flagellates with picoplanktonic size. *Protist* 150: 383–398.
- GUNDERSEN, J. H., H. ELWOOD, A. INGOLD, K. KINDLE, AND M. L. SOGIN. 1987. Phylogenetic relationships between chlorophytes, chrysophytes and Öomycetes. *Proceedings of the National Academy of Sciences, USA* 84: 5823–5827.
- HALLEGRAEFF, G. M., AND Y. HARA. 2003. Taxonomy of harmful marine raphidophytes. In G. M. Hallegraeff, D. M. Anderson, and A. D. Cembella [eds.], *Manual on harmful marine microalgae*, 511–522. UNESCO Publishing, Paris, France.
- HARPER, J. T., AND P. J. KEELING. 2003. Nucleus-encoded, plastid-targeted glyceraldehyde-3-phosphate dehydrogenase (GAPDH) indicates a single origin for chroalveolate plastids. *Molecular Biology and Evolution* 20: 1730–1735.
- HEATH, I. B., AND W. M. DARLEY. 1972. Observations on the ultrastructure of the male gametes of *Biddulphia levis* Ehr. *Journal of Phycology* 18: 51–59.
- HEYWOOD, P. 1990. Phylum Raphidophyta. In L. Margulis, J. O. Corliss, M. Melkonian, and D. J. Chapman [eds.], *Handbook of Protoctista*, 318–325. Jones and Bartlett Publishers, Boston, Massachusetts, USA.
- HEYWOOD, P., AND G. F. LEEDALE. 2002. Order Raphidomonadida. In J. J. Lee, G. F. Leedale, and P. Bradbury [eds.], *An illustrated guide to the protozoa*, 2nd ed., vol. 2, 744–751. Society of Protozoologists, Lawrence, Kansas, USA.
- HIBBERD, D. J. 1970. Observations on the cytology and ultrastructure of *Ochromonas tuberculatus* sp. nov. (Chrysophyceae), with special reference to the discobolocysts. *British Phycological Journal* 5: 119–143.
- HIBBERD, D. J. 1976. The ultrastructure and taxonomy of the Chrysophyceae and Prymnesiophyceae (Haptophyceae): a survey with some new observations on the ultrastructure of the Chrysophyceae. *Botanical Journal of the Linnean Society* 72: 55–80.
- HIBBERD, D. J. 1979. The structure and phylogenetic significance of the flagellar transition region in the chlorophyll *c*-containing algae. *BioSystems* 11: 243–261.
- HIBBERD, D. J. 1990a. Phylum Eustigmatophyta. In L. Margulis, J. O. Corliss, M. Melkonian, and D. J. Chapman [eds.], *Handbook of Protoctista*, 326–333. Jones and Bartlett Publishers, Boston, Massachusetts, USA.
- HIBBERD, D. J. 1990b. Phylum Xanthophyta. In L. Margulis, J. O. Corliss, M. Melkonian, and D. J. Chapman [eds.], *Handbook of Protoctista*, 686–697. Jones and Bartlett Publishers, Boston, Massachusetts, USA.
- HIBBERD, D. J., AND G. F. LEEDALE. 1970. Eustigmatophyceae—a new algal class with unique organization of the motile cell. *Nature* 225: 758–760.
- HIGGINS, M. J., J. E. SADER, P. MULVANEY, AND R. WETHERBEE. 2003. Probing the surface of living diatoms with atomic force microscopy: the nanostructure and nanomechanical properties of the mucilage layer. *Journal of Phycology* 39: 722–734.
- HOEK, C. VAN DEN. 1978. Algen. Thieme, Stuttgart, Germany.
- HOEK, C. VAN DEN, D. G. MANN, AND H. M. JAHNS. 1995. *Algae*. An introduction to phycology. Cambridge University Press, Cambridge, UK.
- HONDA, D., AND I. INOUE. 2002. Ultrastructure and taxonomy of a marine photosynthetic stramenopile *Phaeomonas parva* gen. et sp. nov. (Pinguiphyceae) with emphasis on the flagellar apparatus architecture. *Phycological Research* 50: 75–89.
- HORI, T., AND J. C. GREEN. 1985a. The ultrastructure of mitosis in *Isochrysis galbana* Parke (Prymnesiophyceae). *Protoplasma* 125: 140–151.
- HORI, T., AND J. C. GREEN. 1985b. The ultrastructural changes during mitosis in *Imantonia rotunda* Reynolds (Prymnesiophyceae). *Botanica Marina* 27: 67–78.
- HORI, T., AND J. C. GREEN. 1985c. An ultrastructural study of mitosis in the non-motile coccolith-bearing cells of *Emiliania huxleyi* (Lohm.) Hay et Mohler (Prymnesiophyceae). *Protistologica* 21: 107–120.
- HORI, T., AND J. C. GREEN. 1994. Mitosis and cell division. In J. C. Green and B. S. C. Leadbeater [eds.], *The haptophyte algae*, 91–109. Clarendon Press, Oxford, UK.
- HORI, T., AND I. INOUE. 1981. The ultrastructure of the flagellar apparatus in *Pleurochrysis* (Class Prymnesiophyceae). *Protoplasma* 125: 24–35.
- HUSTEDT, F. 1928. Die Kieselalgen Deutschlands, Österreichs und der Schweiz. In L. Rabenhorst [ed.], *Kryptogamen-Flora von Deutschlands, Österreichs und der Schweiz*, Bd. VII, Teil 1, Lief. 2, 273–464.
- HUXLEY, T. H. 1858. Appendix A. In J. Dayman [ed.], *Deep-sea soundings in the North Atlantic Ocean between Ireland and Newfoundland*, 63–68. Her Majesty's Stationary Office, London, UK.
- IKEN, K., C. D. AMSLER, S. P. GREER, AND J. B. MCCLINTOCK. 2001. Qualitative and quantitative studies of the swimming behaviour of *Hinckesia irregularis* (Phaeophyceae) spores: ecological implications and parameters for quantitative swimming assays. *Phycologia* 40: 359–366.
- INOUE, I., AND M. KAWACHI. 1994. The haptonema. In J. C. Green and B. S. C. Leadbeater [eds.], *The haptophyte algae*, 73–89. Clarendon Press, Oxford, UK.
- JEFFREY, S. W. 1989. Chlorophyll *c* pigments and their distribution in the chromophyte algae. In J. C. Green, B. S. C. Leadbeater, and W. L. Diver [eds.], *The chromophyte algae: problems and perspectives*. Systematics Association Special Volume 38, 13–36. Clarendon Press, Oxford, UK.
- JEFFREY, S. W., AND M. VESK. 1997. Introduction to marine phytoplankton and their pigment signatures. In S. W. Jeffrey, R. F. C. Mantoura, and S. W. Wright [eds.], *Phytoplankton pigments in oceanography*, 37–84. UNESCO Publishing, Paris, France.
- KAWACHI, M., N. ATSUMI, H. IKEMOTO, AND S. MIYACHI. 2002a. *Pinguiochrysis pyriformis* gen. et sp. nov. (Pinguiphyceae), a new picoplanktonic alga isolated from the Pacific Ocean. *Phycological Research* 50: 49–56.
- KAWACHI, M., I. INOUE, O. MAEDA, AND M. CHIHARA. 1991. The haptonema as a food-capturing device: observations on *Chrysochromulina hirta* (Prymnesiophyceae). *Phycologia* 30: 563–573.
- KAWACHI, M., I. INOUE, D. HONDA, C. J. O'KELLY, J. C. BAILEY, R. R. BIDIGARE, AND R. A. ANDERSEN. 2002b. The Pinguiphyceae classis nova, a new class of chromophyte algae whose members produce large amounts of omega-3 fatty acids. *Phycological Research* 50: 31–47.
- KAWACHI, M., M.-H. NOËL, AND R. A. ANDERSEN. 2002c. Re-examination of the marine “chrysophyte” *Polypodochrysis teissieri* (Pinguiphyceae). *Phycological Research* 50: 91–100.
- KAWAI, H., AND I. INOUE. 1989. Flagellar fluorescence in forty-four chlorophyll *c*-containing algae. *Phycologia* 28: 222–227.
- KAWAI, H., AND G. KREIMER. 2000. Sensory mechanisms. Phototaxis and light perception in algae. In B. S. C. Leadbeater and J. C. Green [eds.], *The flagellates*. Unity, diversity and evolution, 124–146. Taylor and Francis, London, UK.
- KAWAI, H., M. KUBOTA, T. KONDO, AND M. WATANABE. 1991. Action spectra for phototaxis in zoospores of the brown alga *Pseudochorda gracilis*. *Protoplasma* 161: 17–22.
- KAWAI, H., S. MAEBA, H. SASAKI, K. OKUDA, AND E. C. HENRY. 2003. *Schizocladia ischiensis*: a new filamentous marine chromophyte belonging to a new class, Schizocladophyceae. *Protist* 154: 211–228.
- KAWAI, H., D. G. MÜLLER, E. FÖLSTER, AND D.-P. HÄDER. 1990. Phototactic responses in the gametes of the brown alga *Ectocarpus siliculosus*. *Planta* 182: 292–297.
- KAWAI, H., S. NAKAMURA, M. MIMURO, M. FURUYA, AND M. WATANABE.

1996. Microspectrofluorometry of the autofluorescent flagellum in phototactic brown algal zooids. *Protoplasma* 191: 172–177.
- KEELING, P. J., AND W. F. DOOLITTLE. 1996. Alpha-tubulin from early-diverging eukaryotic lineages: divergence and evolution of the tubulin family. *Molecular Biology and Evolution* 13: 1297–1305.
- KLEBS, G. 1893a. Flagellatenstudien. I. *Zeitschrift für Wissenschaftliche Zoologie* 55: 265–351.
- KLEBS, G. 1893b. Flagellatenstudien. II. *Zeitschrift für Wissenschaftliche Zoologie* 55: 353–445.
- KOSMAN, C. A., H. A. THOMSEN, AND J. B. ØSTERGAARD. 1993. Parmales (Chrysophyceae) from Mexican, Californian, Baltic, Arctic and Antarctic waters with the description of a new subspecies and several new forms. *Phycologia* 32: 116–128.
- KOUTOULIS, A., G. I. MCFADDEN, AND R. WETHERBEE. 1988. Spine-scale reorientation in *Apedinella radians* (Pedinellales, Chrysophyceae): the microarchitecture and immunocytochemistry of the associated cytoskeleton. *Protoplasma* 147: 25–41.
- KRISTIANSEN, J. AND H. PREISIG [EDS.]. 2001. Encyclopedia of chrysophyte genera. J. Cramer, Berlin, Germany.
- LACKY, J. B. 1939. Notes on plankton flagellates from the Scioto River. *Lloydia* 2: 128–143.
- LEIPE, D. D., S. M. TONG, C. L. GOGGIN, S. B. SLEMENDA, N. J. PIENIAZEK, AND M. L. SOGIN. 1996. 16S-like rDNA sequences from *Developayella elegans*, *Labyrinthuloides haliotidis*, and *Proteromonas lacertae* confirm that the stramenopiles are a primarily heterotrophic group. *European Journal of Protistology* 32: 449–458.
- LEIPE, D. D., P. O. WAINRIGHT, J. H. GUNDERSON, D. PORTER, D. J. PATTERSON, F. VALOIS, S. HIMMERICH, AND M. L. SOGIN. 1994. The stramenopiles from a molecular perspective: 16S-like rDNA sequences from *Labyrinthuloides minuta* and *Cafeteria roenbergensis*. *Phycologia* 33: 369–377.
- LEMMERMANN, E. 1899. Das Phytoplankton sächsischer Teiche. *Forschungsberichte aus der Biologischen Station zu Plön* 7: 96–135.
- LEWIN, J., AND R. A. LEWIN. 1967. Culture and nutrition of apochlorotic diatoms of the genus *Nitzschia*. *Journal of General Microbiology* 46: 361–367.
- LINNAEUS, C. 1753. Species Plantarum. Stockholm, Sweden.
- LIPSCOMB, D. A. 1989. Relationships among the eukaryotes. In B. Fernholm, K. Bremer, and H. Jörnvall [eds.], The hierarchy of life, 161–178. Elsevier, New York, New York, USA.
- LOBBAN, C. S., D. HONDA, M. CHIHARA, AND M. SCHEFTER. 1995. *Chrysozystis fragilis* gen. nov., sp. nov. (Chrysophyceae, Sarcinochrysidales), with notes on other macroscopic Chrysophytes (golden algae) on Guam reefs. *Micronesica* 28: 91–102.
- LUDWIG, M., J. L. LIND, E. A. MILLER, AND R. WETHERBEE. 1996. High molecular mass glycoproteins associated with the siliceous scales and bristles of *Mallomonas splendens* (Synurophyceae) may be involved in cell surface development and maintenance. *Planta* 199: 219–228.
- MANTON, I. 1964. Observations with the electron microscope of the division cycle in the flagellate *Prymnesium parvum* Carter. *Journal of the Royal Microscopical Society* 83: 317–325.
- MANTON, I. 1967. Further observations on the fine structure of *Chrysochromulina chiton* with special reference to the haptonema, 'peculiar' Golgi structure and scale production. *Journal of Cell Science* 2: 265–272.
- MANTON, I., AND B. S. C. LEADBEATER. 1974. Fine-structural observations on six species of *Chrysochromulina* from wild Danish marine naoplankton including a description of *C. campanulifera* sp. nov. and a preliminary summary of the naoplankton as a whole. *Det Kongelige Danske Videnskabskabernes Selskab Biologiske Skrifter* 20: 1–26.
- MANTON, I., AND G. F. LEEDALE. 1969. Observations on the microanatomy of *Coccolithus pelagicus* and *Cricosphaera carterae*, with special reference to the origin and nature of coccoliths and scales. *Journal of the Marine Biological Association of the United Kingdom* 49: 1–16.
- MANTON, I., AND H. A. VON STOSCH. 1966. Observations on the fine structure of the male gamete of the marine centric diatom *Lithodesmium undulatum*. *Journal of the Royal Microscopical Society* 85: 119–134.
- MEDLIN, L. K., R. GERSONDE, W. H. C. F. KOOISTRA, AND U. WELLBROCK. 1996. Evolution of the diatoms (Bacillariophyta). II. Nuclear-encoded small-subunit rRNA sequence comparisons confirm a paraphyletic origin for the centric diatoms. *Molecular Biology and Evolution* 13: 67–75.
- MEDLIN, L. K., W. H. C. F. KOOISTRA, D. POTTER, G. W. SAUNDERS, AND R. A. ANDERSEN. 1997. Phylogenetic relationships of the 'golden algae' (haptophytes, heterokont chromophytes) and their chloroplasts. In D. Bhattacharya [ed.], Origins of algae and their plastids, 187–219. Springer-Verlag, New York, New York, USA.
- MIGNOT, J.-P. 1977. Étude ultrastructurale d'un flagellé du genre *Spumella* Cienk. (= *Heterochromonas* Pascher = *Monas* O.F. Müller), chrysoomonadine leucoplastidiée. *Protistologica* 13: 219–231.
- MIGNOT, J. P., AND G. BRUGEROLLE. 1982. Scale formation in chrysoomonad flagellates. *Journal of Ultrastructural Research* 81: 13–26.
- MOESTRUP, Ø. 1995. Current status of chrysophyte 'splinter groups': synurophytes, pedinellids, silicoflagellates. In C. D. Sandgren, J. Smol, and J. Kristiansen [eds.], Chrysophyte algae: ecology, physiology and development, 75–91. Cambridge University Press, Cambridge, UK.
- MOESTRUP, Ø. 2002. Order Biocosoecida. In J. J. Lee, G. F. Leedale, and P. Bradbury [eds.], An illustrated guide to the protozoa, 2nd ed., vol. 2, 690–693. Society of Protozoologists, Lawrence, Kansas, USA.
- MOESTRUP, Ø., AND C. J. O'KELLY. 2002. Class Silicoflagellata. In J. J. Lee, G. F. Leedale, and P. Bradbury [eds.], An illustrated guide to the protozoa, 2nd ed., vol. 2, 775–782. Society of Protozoologists, Lawrence, Kansas, USA.
- MOESTRUP, Ø., AND H. A. THOMSEN. 1990. *Dictyocha speculum* (Silicoflagellata, Dictyophyceae), studies on armoured and unarmoured stages. *Biologiske Skrifter* 37: 1–57.
- MOESTRUP, Ø., AND H. A. THOMSEN. 2003. Taxonomy of toxic haptophytes (Prymnesiophyceae). In G. M. Hallegraeff, D. M. Anderson, and A. D. Cembella [eds.], Manual on harmful marine microalgae, 433–463. UNESCO Publishing, Paris, France.
- MORIYA, M., T. NAKAYAMA, AND I. INOUE. 2002. A new class of the Stramenopiles, Placididea classis nova: description of *Placidia cafeteriopsis* gen. et sp. nov. *Protist* 153: 143–156.
- MOTOMURA, T., AND Y. SAKAI. 1988. The occurrence of flagellated eggs in *Laminaria angustata* (Phaeophyta, Laminariales). *Journal of Phycology* 24: 282–285.
- MÜLLER, O. F. 1773. Vermium terrestrium et fluviatilium, vol. 1 (1). Hauniae et Lipsiae, Copenhagen, Denmark.
- MÜLLER, O. F. 1786. Animalcula Infusoria Fluvialia et Marina. Hauniae, Copenhagen, Denmark.
- MÜLLER, D. G., I. MAIER, AND H. MÜLLER. 1987. Flagellum autofluorescence and photoaccumulation in heterokont algae. *Photochemistry and Photobiology* 46: 1003–1008.
- MURRAY, G., AND V. H. BLACKMAN. 1898. On the nature of the coccospheres and rhabdospheres. *Philosophical Transactions of the Royal Society, series B* 190: 427–441.
- OKAICHI, T. 1989. Red tide problems in the Seto Inland Sea, Japan. In T. Okaichi, D. Anderson, and T. Nemoto [eds.], Red tides: biology, environmental science and toxicology, 137–142. Elsevier, New York, New York, USA.
- O'KELLY, C. J. 1989. The evolutionary origin of the brown algae: information from studies of motile cell structure. In J. C. Green, B. S. C. Leadbeater, and W. L. Diver [eds.], The chromophyte algae: problems and perspectives. Systematics Association Special Volume 38, 255–278. Clarendon Press, Oxford, UK.
- O'KELLY, C. J. 2002. *Glossomastix chryso-plasta* n. gen., n. sp. (Pinguicophyceae), an unusual coccolith golden alga from southern Australia. *Phycological Research* 50: 67–74.
- OTT, D. W., AND R. M. BROWN, JR. 1972. Light and electron microscopical observation on mitosis in *Vaucheria litorea* Hofman ex C. Agardh. *British Phycological Journal* 7: 361–374.
- PARKE, M., AND I. ADAMS. 1960. The motile (*Crystallolithus hyalinus* Gaarder and Makali) and non-motile phases in the life history of *Coccolithus pelagicus* Schiller. *Journal of the Marine Biological Association of the United Kingdom* 39: 263–274.
- PARKE, M., I. MANTON, AND B. CLARKE. 1955. Studies on marine flagellates. II. Three new species of *Chrysochromulina*. *Journal of the Marine Biological Association of the United Kingdom* 34: 579–604.
- PASCHER, A. 1910. Der Grossteich bei Hirschberg in Nord-Böhmen. *Monographien und Abhandlungen zur Internationale Revue der gesamten Hydrobiologie und Hydrographie* 1: 1–66.
- PASCHER, A. 1913. Chrysoomonadinae. In A. Pascher [ed.], Die Süßwasser-Flora Deutschlands, Oesterreichs und der Schweiz, vol. 2, 7–95. G. Fischer, Jena, Germany.
- PASCHER, A. 1914. Über Flagellaten und Algen. *Berichte der Deutschen botanischen Gesellschaft* 32: 136–60.
- PATTERSON, D. J. 1989. Stramenopiles: chromophytes from a protistan perspective. In J. C. Green, B. S. C. Leadbeater, and W. L. Diver [eds.],



- The chromophyte algae: problems and perspectives. Systematics Association Special Volume 38, 357–379. Clarendon Press, Oxford, UK.
- PATTERSON, D. J. 2002. Residual heterotrophic stramenopiles. In J. J. Lee, G. F. Leedale, and P. Bradbury [eds.], An illustrated guide to the protozoa, 2nd ed., vol. 2, 751–754. Society of Protozoologists, Lawrence, Kansas, USA.
- PORRA, R. J., E. E. PFÜNDEL, AND N. ENGEL. 1997. Metabolism and function of photosynthetic pigments. In S. W. Jeffrey, R. F. C. Mantoura, and S. W. Wright [eds.], Phytoplankton pigments in oceanography, 85–126. UNESCO Publishing, Paris, France.
- POTTER, D., G. W. SAUNDERS, AND R. A. ANDERSEN. 1997. Phylogenetic relationships of the Raphidophyceae and Xanthophyceae as inferred from nucleotide sequences of the 18S rRNA gene. *American Journal of Botany* 84: 966–972.
- PREISIG, H. R. 1989. The flagellar base ultrastructure and phylogeny of chromophytes. In J. C. Green, B. S. C. Leadbeater, and W. L. Diver [eds.], The chromophyte algae: problems and perspectives. Systematics Association Special Volume 38, 167–187. Clarendon Press, Oxford, UK.
- PREISIG, H. R. 1994. Siliceous structures and silicification in flagellated protists. *Protoplasma* 181: 29–42.
- PREISIG, H. R., AND R. A. ANDERSEN. 2002. Chrysophyceae. In J. J. Lee, G. F. Leedale, and P. C. Bradbury [eds.], An illustrated guide to the protozoa, 2nd ed., vol. 2, 693–730. Society of Protozoologists, Lawrence, Kansas, USA.
- PREISIG, H. R., AND D. J. HIBBERD. 1982a. Ultrastructure and taxonomy of *Paraphysomonas* (Chrysophyceae) and related genera, part 1. *Nordic Journal of Botany* 2: 397–420.
- PREISIG, H. R., AND D. J. HIBBERD. 1982b. Ultrastructure and taxonomy of *Paraphysomonas* (Chrysophyceae) and related genera, part 2. *Nordic Journal of Botany* 2: 601–638.
- PREISIG, H. R., AND D. J. HIBBERD. 1983. Ultrastructure and taxonomy of *Paraphysomonas* (Chrysophyceae) and related genera, part 3. *Nordic Journal of Botany* 3: 695–723.
- PUESCHEL, C. M., AND J. R. STEIN. 1983. Ultrastructure of a freshwater brown alga from western Canada. *Journal of Phycology* 19: 209–215.
- QUILLET, M. 1955. Sur la nature chimique de la leucosine, polysaccharide de réserve caractéristique des Chrysophycees, extraite d'*Hydrurus foetidus*. *Compte rendu hebdomadaire des seances de l'Academie des Sciences, Paris* 240: 1001–1003.
- RAGAN, M. A., AND D. J. CHAPMAN. 1978. Biochemical Phylogeny of the Protists. Academic Press, New York, New York, USA.
- REITH, A. 1980. Xanthophyceae, part 4. In H. Ettl, H. J. Gerloff, and H. Heynig [eds.], Süßwasserflora von Mitteleuropa, Band 3, Teil 2, 1–147. Gustav Fischer, Stuttgart, Germany.
- ROSTAFINSKI, I. 1882. L'*Hydrurus* et ses affinités. *Annales des Sciences Naturelles-Botanique, series 6* 14: 1–25.
- ROUND, F. E., R. M. CRAWFORD, AND D. G. MANN. 1990. The diatoms: biology and morphology of the genera. Cambridge University Press, Cambridge, UK.
- RYALL, K., J. T. HARPER, AND P. J. KEELING. 2003. Plastid-derived type II fatty acid biosynthetic enzymes in chromists. *Gene* 313: 139–148.
- SANTOS, L. M. A., AND G. F. LEEDALE. 1991. *Vischeria stellata* (Eustigmatophyceae): ultrastructure of the zoospores with special reference to the flagellar apparatus. *Protoplasma* 164: 160–167.
- SAUNDERS, G. W., D. POTTER, M. P. PASKIND, AND R. A. ANDERSEN. 1995. Cladistic analyses of combined traditional and molecular data sets reveal an algal lineage. *Proceedings of the National Academy of Sciences, USA* 92: 244–248.
- SCHERFFEL, A. 1901. *Phaeocystis globosa* nov. spec., nebst einigen Betrachtungen über die Phylogenie niederer, insbesondere brauner Organismen. *Wissenschaftliche Meeresuntersuchungen Abteilung Helgoland* 4: 1–29.
- SCHILLER, J. 1954. Neue Mikrophyten aus künstlichen betonierten Wasserbehältern, part 2. Mitteilung über neue Cyanosen. *Archiv für Protistenkunde* 100: 116–126.
- SCHMID, A.-M. M. 2003a. Endobacteria in the diatom *Pinnularia* (Bacillariophyceae). I. "Scattered ct-nucleoids" explained: DAPI-DNA complexes stem from exoplastidial bacteria boring into the chloroplasts. *Journal of Phycology* 39: 122–138.
- SCHMID, A.-M. M. 2003b. Endobacteria in the diatom *Pinnularia* (Bacillariophyceae). II. Host cell cycle-dependent translocation and transient chloroplast scars. *Journal of Phycology* 39: 139–153.
- SCHNEPF, E., AND G. DEICHGRÄBER. 1969. Über die Feinstruktur von *Synura petersenii* unter besonderer Berücksichtigung der Morphogenese ihrer Kiesel-schuppen. *Protoplasma* 68: 85–106.
- SCHNEPF, E., G. DEICHGRÄBER, G. RÖDERER, AND W. HERTH. 1977. The flagellar root apparatus, the microtubular system and associated organelles in the chrysophycean flagellate, *Poterioochromonas malhamensis* Peterfi (syn. *Poterioochromonas stipitata* Scherffel and *Ochromonas malhamensis* Pringsheim). *Protoplasma* 92: 87–107.
- SEKIGUCHI, H., M. MORIYA, T. NAKAYAMA, AND I. INOUE. 2002. Vestigial chloroplasts in heterotrophic stramenopiles *Pteridomonas danica* and *Ciliophrys infusionum* (Dictyochophyceae). *Protist* 153: 157–167.
- SEKIGUCHI, H., M. KAWACHI, T. NAKAYAMA, AND I. INOUE. 2003. A taxonomic re-evaluation of the Pedinellales (Dictyochophyceae), based on morphological, behavioural and molecular data. *Phycologia* 42: 165–182.
- SIESSER, W. G. 1994. Historical background of coccolithophore studies. In A. Winter and W. G. Siesser [eds.], Coccolithophores, 1–11. Cambridge University Press, Cambridge, UK.
- SILVA, P. C. 1980. Names of classes and families of living algae. *Regnum Vegetabile* 103: 1–156.
- SIMPSON, T. L., AND B. E. VOLCANI [EDS.]. 1981. Silicon and siliceous structures in biological systems. Springer-Verlag, New York, New York, USA.
- SIVER, P. A. 1991. The biology of *Mallomonas*. Morphology, taxonomy and ecology. Kluwer Academic Publishers, Dordrecht, Netherlands.
- SLANKIS, T., AND S. P. GIBBS. 1972. The fine structure of mitosis and cell division in the chrysophycean alga *Ochromonas danica*. *Journal of Phycology* 8: 243–256.
- SLEIGH, M. A. 1974. The biology of cilia and flagella. Pergamon, London, UK.
- SLEIGH, M. A. 1989. Protozoa and other protists. Edward Arnold, London, UK.
- SMESTAD-PAULSEN, B., AND S. MYKLESTAD. 1978. Structural studies of the reserve glucan produced by the marine diatom *Skeletonema costatum* (Grev.) Cleve. *Carbohydrate Research* 62: 386–388.
- SMOL, J. P. 1995. Application of chrysophytes to problems in paleoecology. In C. D. Sandgren, J. P. Smol, and J. Kristiansen [eds.], Chrysophyte algae: ecology, phylogeny and development, 303–329. Cambridge University Press, Cambridge, UK.
- SORBY, H. C. 1861. On the organic origin of the so-called "crystalloids" of the chalk. *Annals and Magazine of Natural History, series 3* 8: 193–200.
- SORHANNUS, U. 2001. A "total evidence" analysis of the phylogenetic relationships among the photosynthetic stramenopiles. *Cladistics* 17: 227–41.
- STACEY, V. J., AND R. N. PIENAAR. 1980. Cell division in *Hymenomonas carterae* (Braarud et Fagerberger) Braarud (Prymnesiophyceae). *British Phycological Journal* 15: 365–376.
- STARMACH, K. 1985. Chrysophyceae und Haptophyceae. In H. Ettl, J. Gerloff, H. Heynig, and D. Mollenhauer [eds.], Süßwasserflora von Mitteleuropa, Band 1, 1–515. Gustav Fischer Verlag, Stuttgart, Germany.
- STEWART, K. D., AND K. R. MATTOX. 1980. Phylogeny of phytoflagellates. In E. R. Cox [ed.], Phytoflagellates, 433–462. Elsevier, Amsterdam, Netherlands.
- STOERMER, E. F., AND J. P. SMOL [EDS.]. 1999. The diatoms: applications for the environmental and earth sciences. Cambridge University Press, Cambridge, UK.
- STRAIN, H. H. 1951. The pigments of algae. In G. M. Smith [ed.], Manual of phycology, 243–262. Chronica Botanica, Waltham, Massachusetts, USA.
- TAYLOR, F. J. R. 1976. Flagellate phylogeny: a study of conflicts. *Journal of Protozoology* 23: 28–40.
- TIPPIT, D. H., L. PILLUS, AND J. D. PICKETT-HEAPS. 1980. Organization of spindle microtubules in *Ochromonas danica*. *Journal of Cell Biology* 87: 531–545.
- VAN DER AUWERA, C., AND R. DE WACHTER. 1997. Complete large subunit ribosomal RNA sequences from the heterokont algae *Ochromonas danica*, *Nannochloropsis salina*, and *Tribonema aequale*, and phylogenetic analysis. *Journal of Molecular Evolution* 45: 84–90.
- VESK, M., L. R. HOFFMAN, AND J. D. PICKETT-HEAPS. 1984. Mitosis and cell division in *Hydrurus foetidus* (Chrysophyceae). *Journal of Phycology* 20: 461–470.
- VESK, M., AND S. W. JEFFREY. 1987. Ultrastructure and pigments of two strains of the picoplanktonic alga *Pelagococcus subviridis* (Chrysophyceae). *Journal of Phycology* 23: 322–336.
- WALLICH, G. C. 1860. Results of soundings in the North Atlantic. *Annals of Natural History* 6: 457–458.



- WALLICH, G. C. 1961. Remarks on some novel phases of organic life and on the boring powers of minute annelids, at great depths in the sea. *Annals of Natural History series 3* 8: 52–58.
- WETHERBEE, R., AND R. A. ANDERSEN. 1992. Flagella of a chrysophycean alga play an active role in prey capture and selection. Direct observations on *Epipyxis pulchra* using image enhanced video microscopy. *Proto-plasma* 166: 1–7.
- WETHERBEE, R., S. J. PLATT, P. L. BEECH, AND J. D. PICKETT-HEAPS. 1988. Flagellar transformation in the heterokont *Epipyxis pulchra* (Chrysophyceae): direct observations using image-enhanced light microscopy. *Protoplasma* 145: 47–54.
- WILLIAMS, D. M. 1991. Phylogenetic relationships among the Chromista: a review and preliminary analysis. *Cladistics* 7: 141–156.
- WINTER, A., AND W. G. SIESSER [EDS.]. 1994. Coccolithophores. Cambridge University Press, Cambridge, UK.
- WYVILLE-THOMPSON, C. 1874. Preliminary notes on the nature of the sea-bottom procured by the soundings of *HMS Challenger* during her cruises in the Southern Sea in the early part of the year 1874. *Proceedings of the Royal Society of London, series B* 23: 32–49.
- YOON, H. S., J. D. HACKETT, AND D. BHATTACHARYA. 2002a. A single origin of the peridinin- and fucoxanthin-containing plastids in dinoflagellates through tertiary endosymbiosis. *Proceedings of the National Academy of Science, USA* 99: 11724–11729.
- YOON, H. S., J. D. HACKETT, G. PINTO, AND D. BHATTACHARYA. 2002b. The single, ancient origin of chromist plastids. *Proceedings of the National Academy of Science, USA* 99: 1507–1512.
- YOON, H. S., J. D. HACKETT, C. CINIGLIA, G. PINTO, AND D. BHATTACHARYA. 2004. A molecular timeline for the origin of photosynthetic eukaryotes. *Molecular Biology and Evolution* 21: 809–818.
- ZIMMERMANN, B., Ø. MOESTRUP, AND G. HÄLLFORS. 1984. Chrysophyte or heliozoon: Ultrastructural studies on a cultured species of *Pseudopedinella* (Pedinellales ord. nov.), with comments on species taxonomy. *Protistologica* 20: 591–612.