

TAGA[®]

HARMONY

To Achieve Glorious Acoustics



Home
Entertainment

Multimedia

Electronics

2017 v.1



TAGA Harmony

The TAGA Harmony story

The European founders of the TAGA Harmony brand Mr. Kokocinski from Poland and Mr. Richard from Germany started their involvement in the audio business in the early years of 1990.

They were recognized music lovers and specialists in the high-end audio and were dealing with repair and sales of high-end audio equipment.

They found out that most speaker brands that boasted top sound performance, offered their products at extremely high prices, but they did not really provide good sound quality.

This prompted them to establish their own TAGA Harmony brand.

At the beginning the company was operating in the field of sound engineering services and audio products enhancement.

It took almost 2 years to develop first loudspeaker prototypes which met enthusiastic reception of audiophiles.

Nowadays TAGA Harmony brand is offering high quality products for the hi-fi and audio-video market.

Main types of products are: high-end, hi-fi and home theatre speakers, in-wall/in-ceiling and outdoor speakers, multimedia speakers, hi-fi electronics and accessories for speakers.

"TAGA Harmony" logo decrypted

The meaning of TAGA logo is **To Achieve Glorious Acoustics** and it says everything about people behind the brand, their passion, devotion, philosophy and constant striving to perfection – it is TAGA Harmony's DNA.

It means that everything what TAGA Harmony designs, engineers or builds has one goal in mind: to provide the best sound and joy to music lovers around the World.



A strong basis for the logo was added: **"HARMONY"** to emphasize that on every step all products are created in harmony with nature.

SOUND CRITERIA – TAGA Harmony MISSION

The main criteria TAGA Harmony has defined for sound performance of their products is:

- Accurate and perfect localization;
- Spacious soundstage;
- Low distortions;
- Flat midrange response;
- Extra wide sound dispersion;
- Powerful and deep bass;
- Impressive dynamics;
- Superior overall balance.

TAGA Harmony is committed to this mission from the very beginning.

The result is that TAGA Harmony loudspeakers and electronics can boast the finest music and home theatre performance with great dispersion and spaciousness, a low bass and stunning dynamics, adding sonic accuracy, precise location and ultra-low distortions.

PASSION, ENGINEERING & EUROPEAN PERFECTION

Passion, love of music and European know-how behind all the products!

Advanced materials, state of the art engineering and innovate design by a team of professional designers position TAGA Harmony as one of the leaders in the industry. TAGA Harmony spends hundreds of hours on developing each and single product.

During repeated listening tests and multiplied advanced measuring research carried by TAGA Harmony's R&D department, all potential weaknesses of the final product are adjusted and corrected to perfection.

Combined with the large scale of production all these features make TAGA Harmony product offer unbeatable value and sound performance!

STRONG GROUND ON BOTH CONTINENTS

Nowadays TAGA Harmony is developing its worldwide activities in the high-end audio field through divisions located in Europe and Asia.

TAGA Harmony owns and operates an advanced production facility which consists of modern R&D department and production lines with independent quality inspection checkpoints.

That is why almost all TAGA Harmony products and used components are designed and manufactured in-house.

Przemek Kokocinski - TAGA Harmony CEO and co-founder



The Diamonds are a Music Lover's Best Friend !

Diamond Series



TAGA Harmony appointed a team of dedicated engineers for designing loudspeakers with extremely high-end look and top sound - the project with a code name „Diamond”.

Their goal was to use all the knowledge and experience in research, development and manufacturing of speakers to build an exceptional floorstanding speaker showcasing the best technology and achievements of TAGA Harmony.

The result is visible at the first glance on the beautifully crafted cabinet with its curved, clear, elegant lines and luxurious design accentuated with high grade African wood veneer painted with high-end clear gloss piano lacquer.

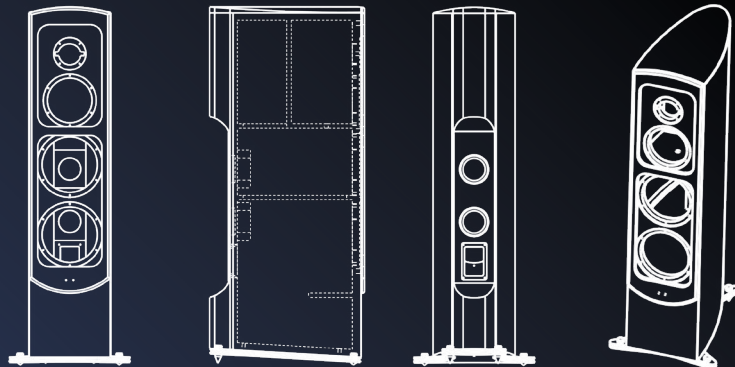
When you turn on the speakers you are immediately stunned by the exceptional Diamond F-200 sound - super natural, super dynamic, super clear and engaging... just super! **Taste it, Immerse in it, Love it!**

Speaker cabinet design and construction is one of the most critical elements influencing sound performance.

Based on our TLIE technology we have developed a new high-end solution to even more increase stiffness and limit any unwanted resonances of the cabinet. The new technology is called **S-TLIE** Super Taga Low Interference Enclosures.

Super rigid and thick **25mm MDF boards** were used for side, rear, top and bottom walls and **30mm for the baffle** (front panel). The internal structure was divided in two chambers in an approximate ratio 80% of volume for woofers and 20% for a midrange and tweeter. It allows much better and independent tuning of the low and mid-high sections.

To keep elegant and sleek appearance of the front panel there are no grill sockets thanks to a magnetically mounted grill.



Internal bracing is used to further strengthen the whole structure and achieve even greater rigidity.

The walls are firmly anchored to the **80mm backbone** beam highly strengthening the whole construction.

The bent shape of the side walls as well as the curved top plays a significant role in lowering unwanted vibrations, diffraction, turbulences and standing waves effect.



The 2-layer design of the metal base increases isolation from the floor, the transparency of sound and provides better definition and the basis for the bass.

The whole cabinet is tilted back slightly to time-align all the drivers – it brings the tweeter's output into the best and correct alignment.

Diamond B-60

After a tremendous success of the Diamond F-200 we decided to expand the series with reference bookshelf speakers Diamond B-60. The same ultra-high-end sound now embedded in compact size handcrafted cabinets.



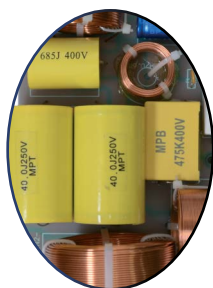
Diamond



Diamond F-200



Diamond B-60



The high-end 30mm **O-TPTTD** (Oversized Taga Pure Titanium Tweeter Dome) with 2 magnets ($\Phi 80$ / $\Phi 70$) is 20% bigger than in our Platinum Special Edition series to allow even higher power handling and more accurate, clear, smooth and detailed performance. It has exceptional precision and works with ultra-extended high-frequency response up to 33 kHz (+/- 3dB). The **E-TPAF** faceplate helps even further dispersion of high-frequencies.

	Diamond F-200	Diamond B-60
Speaker Type	Floorstanding	Bookshelf
Drivers Configuration	Tweeter 30mm (1.18"), O-TPTTD E-TPAF Midrange 165mm (6.5"), E-TPACD Bass 2 x 203mm (8"), TNPPCD	Tweeter 30mm (1.18"), O-TPTTD E-TPAF Bass / Midrange 165 mm (6.5") TNPPCD
Recommended Amplifier Power	100 - 400W	50 - 200W
Sensitivity	91dB	90dB
Crossover Points	450Hz 4kHz	3.2kHz
Impedance	6ohm	6ohm
Frequency Response	30Hz - 33kHz (+/- 3dB)	36Hz - 33kHz (+/- 3dB)
Dimensions (H x W x D)	120 x 28 x 52 cm	41 x 23 x 34.7 cm
Net Weight	112 kg / pair	26.6 kg / pair
Finishes	Rosewood Veneer – With Clear Gloss Piano Lacquer African Walnut Veneer – With Clear Gloss Piano Lacquer	

Floorstanding models: The height excluding spikes and including a base. The weight including a base.



The **E-TPACD** (Extended Taga Pure Aluminum cone Driver) midrange (aluminum chassis, oversized 2-magnet structure $\Phi 100/\Phi 90$) moves very fast and frequently allowing mid-range frequencies to be very rich, spacious and sweet. The extended low and high frequency range (46 Hz – 18 kHz) helps overlapping with frequencies of the woofers and the tweeter to offer the best sound consistency.

The **TNPPCD** (Taga Non-pressed Paper Cone Driver) bass and bass / midrange drivers are equipped with oversized magnets (three in the F-200: $2 \times \Phi 123 + \Phi 100$; and $\Phi 120$ with a copper cap in the B-60) and aluminum chassis. They are extremely rigid and utilize vibration-free solutions.

The heavy duty pure copper ribbon voice coil (4-layer in the F-200 and 2-layer in the B-60) allows high power handling. The bass is deep, precise and detailed while mid frequencies are very reach, wide and transparent.



Super Performance Beyond Expectations

Platinum SE Series



The award-winning and highly acclaimed Platinum v.2 series is the progenitor of our flagship Special Edition SE series. But the similarities between the SE series and the Platinum series are only the shapes of the enclosures. The High class finishes, all components and technology are totally new or deeply revised.

The Platinum SE showcases all the qualities of dedication and love of music, groundbreaking developments in speaker design and technology which have inspired TAGA designers and engineers.



The TLIE (Taga Low Interference Enclosure) enclosures in a beautiful natural rosewood wood veneer with a choice of clear gloss or clear matt piano lacquer finishes, or in high class real piano (deep black and snowy white) are extremely rigid. The floorstanding models sit on a new high-end, beautiful plinth. The bassreflex ports and TTP (Taga Top Plate) are rubber coated for more luxurious look and to provide even better effect on sound performance. The high-end binding posts, top class crossovers and dedicated internal wiring are used for more natural sound.

Platinum F-100 SE v.2 & B-40 SE v.2

The handcrafted TLIE enclosure is now even more rigid and neutral to vibrations and colorization – thanks to increased MDF walls thickness from 15mm to 18mm.

New configuration of the drivers: the tweeter is positioned closer to the midrange and bass/midrange than in the previous versions to provide even better smoothness between high and mid frequencies. The bass drivers in the Platinum F-100 SE v.2 were moved a little up in order to change bass definition and its dispersion.

The dramatically upgraded crossover to meet new refinements and configuration of the drivers: more delicate and rich treble, better defined midranges and more dynamic bass.

Supplied with the Platinum F-100 SE v.2 extra aluminum spike supports provide extra stability for the speakers and protect the floor from being scratched.





The revised 2nd generation TPTTD-I (Taga Pure Titanium Tweeter Dome) now uses neodymium magnet for a higher efficiency and more precise and extended high-frequency response. The totally new TPAF (Taga Pure Aluminium Faceplate) helps further dispersion of high -frequencies.

The upgraded TPACD-I (Taga Pure Aluminium Cone Driver) utilizes bigger magnet structure to support more realistic soundfield. Center speaker has a 3-way design with new 3" TPACD driver.

The TWCD (Taga Woolen Cone Driver) delivers extremely deep, articulate bass with superior timing and pitch.



Platinum F-100 SE v.2 & B-40 SE v.2

The 3rd generation TPTTD-II tweeter utilizes a differently shaped and lighter titanium cone – it allows faster, more accurate movement of the dome reflecting in more detailed and airy sound.

The 3rd generation TPACD-II midrange - new adjustments and refinements along with revised double-magnet structure provide even higher power handling and more rich, spacious and sweet mids.

The 2nd generation TWCD-I bass and bass/midrange with different composition of cone materials - the cone is lighter so can move faster generating better defined, more dynamic and faster bass performance. And the redesigned voice coil utilizing thicker and purer flat wire offers even higher power handling and longer operation time without increased temperature.

Platinum SE



F-100 SE v.2



F-60 SE



B-40 SE v.2



S-40 SE



C-40PR SE

	Platinum F-100 SE v.2	Platinum F-60 SE	Platinum B-40 SE v.2	Platinum C-40PR SE	Platinum S-40 SE
Speaker Type	Floorstanding	Floorstanding	Bookshelf	Center	Surround / Bookshelf
Drivers Configuration	Tweeter 25mm (1") TPTTD-II, TPAF, TTP Midrange 133mm (5.25"), TPACD-II Bass 2 x 165mm (6.5") TWCD-I	Tweeter 25mm (1") TPTTD-I, TPAF, TTP Midrange 133mm (5.25"), TPACD-I Bass 165mm (6.5") TWCD	Tweeter 25mm (1") TPTTD-II, TPAF, TTP Bass / Midrange 165mm (6.5"), TWCD-I	Tweeter 25mm (1") TPTTD-I, TPAF, TTP Midrange 78mm (3") TPACD-I Bass 2 x 133mm (5.25"), TWCD	Tweeter 25mm (1") TPTTD-I, TPAF, TTP Bass / Midrange 133mm (5.25"), TWCD
Recommended Amplifier Power	20 - 280W	20 - 240W	20 - 160W	20 - 180W	20 - 140W
Sensitivity	92dB	90dB	90dB	89dB	88dB
Crossover Points	700Hz 2.5kHz	250Hz 4kHz	2kHz	800Hz 4kHz	4.5kHz
Impedance	4ohm	4ohm	4ohm	4ohm	4ohm
Frequency Response	28Hz - 40kHz	33Hz - 40kHz	36Hz - 40kHz	36Hz - 40kHz	40Hz - 40kHz
Dimensions (H x W x D)	108.9 x 25 x 34 cm	96.6 x 25 x 34 cm	41 x 21.9 x 27 cm	21 x 60 x 19 cm	35 x 23 x 24.2 cm
Net Weight	53.3 kg / pair	41.6 kg / pair	16.9 kg / pair	8.3 kg / pc	13.2 kg / pair
Finishes	Rosewood Veneer - With Clear Matt Piano Lacquer Piano White Lacquer		Rosewood Veneer - With Clear Gloss Piano Lacquer African Walnut Veneer - With Clear Gloss Piano		Lacquer Piano Black Lacquer

Floorstanding models: The height excluding spikes and including a base. The weight including a base.

Amazing Sound

Coral Series



Colors explode across coral reef, what inspired our designers and engineers to create the CORAL speaker series. Like reef our speakers explode with thousands of tones, and take you for an enjoyable and luxurious journey to the land of audiophile music.



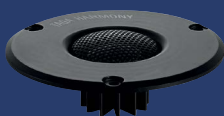
The THAW (Taga High Amplitude Woofer) offers extended cone excursion, which results in increased speed and range. The bass is fast, strong, low and dynamic. The THCA (Taga High Current Amplifier) offers huge amounts of raw power, and oversized, high-performance heatsink quickly dissipates generated heat, increasing efficiency and range of amplifier.

The beautifully crafted enclosures in luxurious wood veneer or elegant high gloss finishes, groundbreaking technology and advanced developments.

The 2nd generation TPTTD-I (Taga Pure Titanium Tweeter Dome) and TPAF (Taga Pure Aluminum Faceplate) same as used in our flagship Platinum SE series.

The new high-end 6.5" TPACD (Taga Pure Aluminum Cone Driver) reproduces very natural and detailed sound of vocals and instruments.

The new TRSCD (Taga Reinforced Straw Cone Driver) is ultra-light and rigid at the same time. It delivers the quantity of extremely deep, accurate bass as well as presents superior neutrality and resolution of mid frequencies.





	CORAL F-120	CORAL F-80	CORAL C-40	CORAL S-40	CORAL SW-10
Speaker Type	Floorstanding	Floorstanding	Center	Surround / Bookshelf	Active Subwoofer
Drivers Configuration	Tweeter 25mm (1") TPTTD-I, TPAF Midrange 165mm (6.5"), TPACD Bass 165mm (6.5") TRSCD Rear Bass 165mm (6.5") TRSCD	Tweeter 25mm (1") TPTTD-I, TPAF Midrange 165mm (6.5"), TPACD Bass 165mm (6.5") TRSCD	Tweeter 25mm (1") TPTTD-I, TPAF Bass / Midrange 2 x 133mm (5.25") TRSCD	Tweeter 25mm (1") TPTTD-I, TPAF Bass / Midrange 133mm (5.25") TRSCD	Bass 255mm (10") THAW
Recommended Amplifier Power	20 - 220W	20 - 200W	20 - 140W	20 - 140W	Built-in amplifier, 200W RMS 700W Dynamic Peak, THCA
Sensitivity	90dB	90dB	88dB	88dB	
Crossover Points	250Hz 1.8kHz 2kHz	600Hz 3kHz	3kHz	2.5kHz	
Impedance	6ohm	6ohm	6ohm	6ohm	
Frequency Response	28Hz - 40kHz	32Hz - 40kHz	44Hz - 40kHz	44Hz - 40kHz	20Hz - 200Hz
Dimensions (H x W x D)	97.5 x 19.5 x 36 cm	92.5 x 19.5 x 29 cm	16.5 x 50 x 21 cm	30 x 16.5 x 23 cm	43 x 35 x 41 cm (incl. feet)
Net Weight	46 kg / pair	39.4 kg / pair	7.2 kg / pc	11.3 kg / pair	23.6 kg / pc
Finishes	Walnut Wood Veneer - With Clear Matt Lacquer High Gloss White High Gloss Black				

Floorstanding models: The height excluding spikes and including a base. The weight including a base.

New Level of Mastery!

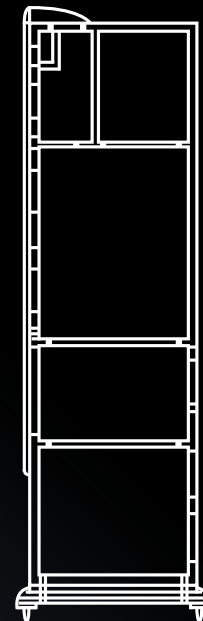
Platinum V.2 Series

There were no compromises during the design and manufacturing process of the previous Platinum series, but in the newest v.2 version our engineers and designers show a whole new level of mastery.



The TLIE - Taga Low Interference Enclosures are made of high-quality thick MDF boards with inside braces to increase stiffness and limit any unwanted resonances. The shapes are perfectly crafted to lower any unwanted vibrations, diffractions or turbulences which can affect the sound performance.

Three floorstanding models fit variously sized rooms and meet different audiophiles' demands. They are placed on solid bases with spikes, which ensure stability as well as isolate the speaker from the floor.



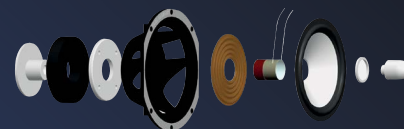
The completely new TPTTD Pure Titanium Dome tweeter has been tuned to reach remarkable 40kHz top frequency and the new TWG TAGA Waveguide design allows to widen the dispersion of highs around the room.

The TTP Top Plate (selected models only) with highly placed tweeter reduces standing waves effect and creates three-dimensional performance.

The result is a spacious, crystal clear and rich sound performance even at highest volumes.



The TPACD Pure Aluminum Cone midrange and bass drivers have been tuned and upgraded. Now mids are more natural, live and rich, and bass is much better defined and deeper.



Platinum V.2



F-120 v.2



F-100 v.2



F-60 v.2



SW-10 v.2

	Platinum F-120 v.2	Platinum F-100 v.2	Platinum F-60 v.2	Platinum SW-10 v.2
Speaker Type	Floorstanding	Floorstanding	Floorstanding	Active Subwoofer
Drivers Configuration	Tweeter 25mm (1") TPTTD, TWG, TTP Midrange 133mm (5.25") TPACD Bass 3 x 165mm (6.5") 2 x TPACD, 1 x TPAPR	Tweeter 25mm (1") TPTTD, TWG, TTP Midrange 133mm (5.25") TPACD Bass 2 x 165mm (6.5") TPACD	Tweeter 25mm (1") TPTTD, TWG, TTP Midrange 133mm (5.25") TPACD Bass 165mm (6.5"), TPACD	Bass 255mm (10") THAW, TSAC
Recommended Amplifier Power	20 - 280W	20 - 250W	20 - 230W	Built-in amplifier, 175W RMS 550W Dynamic Peak, THCA
Sensitivity	93dB	92dB	90dB	
Crossover Points	700Hz 4kHz	700Hz 4kHz	700Hz 4kHz	
Impedance	6ohm	6ohm	6ohm	
Frequency Response	28Hz - 40kHz	30Hz - 40kHz	35Hz - 40kHz	20Hz - 200Hz
Dimensions (H x W x D)	117 x 25 x 34 cm	108.9 x 25 x 34 cm	96.6 x 25 x 34 cm	43 x 35 x 41 cm (incl. feet)
Net Weight	49.2 kg / pair	40.2 kg / pair	36.4 kg / pair	26.5 kg / pc
Finishes		Black High Gloss White	Wenge High Gloss Black	

Floorstanding models: The height excluding spikes and including a base. The weight including a base.
*Weights for PVC finish versions.

Platinum V.2



B-40 v.2



C-100 v.2



C-40PR v.2



S-100 v.2



S-40 v.2

Platinum B-40 v.2	Platinum C-100 v.2	Platinum C-40PR v.2	Platinum S-100 v.2	Platinum S-40 v.2
Bookshelf	Center	Center	Surround	Surround / Bookshelf
Tweeter 25mm (1") TPTTD, TWG, TTP	Tweeter 25mm (1") TPTTD, TWG	Tweeter 25mm (1") TPTTD, TWG, TTP	Tweeter 2 x 25mm (1") TPTTD, TWG	Tweeter 25mm (1") TPTTD, TWG, TTP
Bass / Midrange 165mm (6.5") TPACD	Bass / Midrange 4 x 133mm (5.25") TPACD	Bass / Midrange 2 x 133mm (5.25") TPACD	Bass / Midrange 2 x 133mm (5.25") TPACD	Bass / Midrange 133mm (5.25") TPACD
20 - 150W	20 - 200W	20 - 130W	20 - 180W	20 - 130W
89dB	90dB	88dB	88dB	87dB
2.5kHz	4.5kHz	3.5kHz	4.5kHz	4.5kHz
6ohm	6ohm	6ohm	6ohm	6ohm
38Hz - 40kHz	38Hz - 40kHz	39Hz - 40kHz	38Hz - 40kHz	42Hz - 40kHz
41 x 25 x 27.2 cm	17 x 89 x 10 cm	21 x 60 x 19 cm	28 x 27.7 x 17.2 cm	35 x 23 x 24.2 cm
15.5 kg / pair	8 kg / pc	6.7 kg / pc	10 kg / pair	11 kg / pair
	Black	Wenge	Walnut	
	High Gloss White	High Gloss Black	Matt Black	

Honey, I shrunk the Platinum!

Platinum SLIM Series

You love the excellent sound of our award-winning and highly acclaimed Platinum series but your spouse would be furious seeing big boxes in your living room. Here comes the solution! The solution means no substitutions or compromises were used but just like in an old good movie: the Platinum series has just been shrunk to more compact, appealing SLIM version.



BEST BUY



RECOMMENDATION



Platinum SLIM



F-90 SL



F-60 SL



LCR-60 SL

	F-90 SL	F-60 SL	LCR-60 SL
Speaker Type	Floorstanding	Floorstanding	Left / Center / Right
Drivers Configuration	Tweeter 25mm (1") TPTTD, TWG, TTP Midrange 133mm (5.25") TPACD Bass 3 x 133mm (5.25") 2 x TPACD, 1 x TPAPR	Tweeter 25mm (1"), TPTTD, TWG, TTP Bass / Midrange 4 x 102mm (4") TPACD	Tweeter 25mm (1") TPTTD, TWG, TTP Bass / Midrange 4 x 102mm (4") TPACD
Recommended Amplifier Power	20 - 240W	20 - 150W	20 - 150W
Sensitivity	91dB	90dB	89dB
Crossover Points	700Hz 3.7kHz	450Hz 2.5kHz	450Hz 2.5kHz
Impedance	6ohm	6ohm	6ohm
Frequency Response	31Hz - 40kHz	35Hz - 40kHz	39Hz - 40kHz
Dimensions (H x W x D)	103.5 x 17 x 24.5 cm	98.5 x 15.5 x 23.7 cm	13.5 x 76 x 11 cm
Net Weight	32.6 kg / pair	26.4 kg / pair	8.5 kg / pc
Finishes		Black High Gloss White	Wenge High Gloss Black
			Walnut Matt Black

Floorstanding models: The height excluding spikes and including a base. The weight including a base.
*Weights for PVC finish versions.

Platinum SLIM

Platinum *One*

Small in Size – Big in Heart!



The Platinum ONE - our designers and engineers paid special attention to this project – the difficult goal was to design this small Beauty giving it very powerful and jaw-dropping sound performance. It took more than 6 months of hard work and repeated tests and adjustments after the final and satisfactory result has been achieved.

So here it goes: we are proudly presenting the Platinum ONE: Small in Size – Big in Heart!

This premium speaker is a great choice for shelf or stand mounting for demanding stereo and home theaters systems.

The Platinum ONE beautiful and rounded little vented cabinet is made of very dense MDF material to ensure exceptional rigidity and limit distortion and vibrations.

The award-winning and highly acclaimed TPTTD Pure Titanium Dome tweeter utilizing TWG TAGA Waveguide and TTP Top Plate was upgraded for even more spacious, crystal clear and rich highs and to achieve higher volumes.



The upgraded 4" bass / midrange driver with TPAIC Taga Pure Aluminum Injection-molded Chassis utilizing oversized double magnet structure, TAVS Taga Air Ventilation System and a long-throw paper cone with pure aluminum dust cap ensures deeper bass and wonderfully spacious and rich midrange.



S-90 SL



C-90 SL

	Platinum SLIM ONE	Platinum SLIM S-90 SL	Platinum SLIM C-90 SL
Speaker Type	Bookshelf	Surround	Center
Drivers Configuration	Tweeter 25mm (1") TPTTD, TWG, TTP Bass / Midrange 102mm (4") TPAIC, TAVS	Tweeter 25mm (1") TPTTD, TWG, TTP Bass / Midrange 133mm (5.25") TPACD	Tweeter 25mm (1") TPTTD, TWG, TTP Bass / Midrange 2 x 133mm (5.25") TPACD
Recommended Amplifier Power	20 - 100W	20 - 120W	20 - 120W
Sensitivity	86dB	87dB	88dB
Crossover Points	3kHz	4.3kHz	3.5kHz
Impedance	6ohm	6ohm	6ohm
Frequency Response	42Hz - 40kHz	44Hz - 40kHz	42Hz - 40kHz
Dimensions (H x W x D)	23 x 14.5 x 21.4 cm	26 x 17 x 15 cm	18 x 52 x 19 cm
Net Weight	8.1 kg / pair	6.6 kg / pair	5.9 kg / pc
Finishes	Black High Gloss White	Wenge High Gloss Black	Walnut Matt Black

*Weights for PVC finish versions.

The taste of Côte d'Azur - redefined!

Azure v.2 Series



System 5.0 Azure v.2
TEST WINNER

You are of course familiar with the French Riviera, which stretches over a hundred kilometers of coastline where the beautiful colored Mediterranean Sea closes in around amazing cliffs, sandy beaches and exquisite resorts.

We named our speakers series "AZURE" to emphasize their sound character, which is like sea's breeze powerful and gentle at the same time, and gives the joy of listening like watching azure color of the Mediterranean Sea.

And the design of the new AZURE v.2 series is elegant, awesome and stylish, so there is no doubt that our speakers can shine like stars in the backdrop of famous and luxurious resorts of the French Riviera.



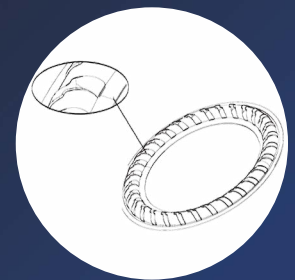
BLACK
MATT
FRONT PANEL

TLIE (Taga Low Interference Enclosure) – new elegant enclosures are now even more rigid and neutral to vibrations and colorization. We have increased MDF walls thickness from 12mm to 15mm in a floorstanding speaker (plus 18mm thick front panel) and from 9mm to 12mm in Center and Surround speakers (plus 15mm front panel);

New configuration of the drivers: tweeters are positioned closer to the midrange to provide even better smoothness and integration between high and mid frequencies. The bass drivers in the floorstanding model were moved a little up in order to change bass definition and its dispersion.

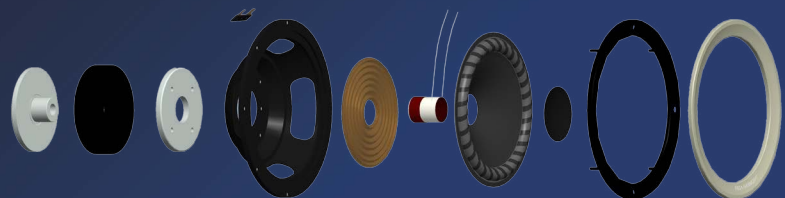
The dramatically upgraded crossovers to meet new refinements and configuration of the drivers: more delicate and rich treble, better defined midrange and more dynamic bass.

The new AZURE v.2 series is dedicated for very demanding hi-fi and home-theatre enthusiasts, who look for the best sound performance as well as love to enjoy sound without missing any single tune of melody!



The totally new high-performance midrange and bass drivers incorporating **TDSC Taga Dynamic Surround Control**, which provides stable cone movement, dynamics and precision and increased system sensitivity.

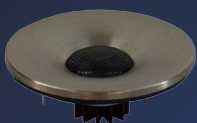
New decorative pure aluminum trim rings to enhance sound dispersion.



The 2nd generation TPTTD-I (Taga Pure Titanium Tweeter Dome) utilizes a differently shaped and lighter titanium cone as well as a double-magnet structure – it has a higher SPL, faster and more accurate movement of the dome reflecting in more detailed and airy sound.

The **TPAF** (Taga Pure Aluminum Faceplate) helps further dispersion of high-frequencies.

Dome metal grill assists with equal and flat dispersion of sound in and off the axis of the driver.



Azure v.2



AZURE F-100 v.2



AZURE B-40 v.2



AZURE C-40 v.2



AZURE S-40 v.2

	AZURE F-100 v.2	AZURE B-40 v.2	AZURE C-40 v.2	AZURE S-40 v.2
Speaker Type	Floorstanding	Bookshelf	Center	Surround
Drivers Configuration	Tweeter 25mm (1") TPTTD-I, TPAF Midrange 165mm (6.5") Polypropylene, TDSC Bass 2 x 165mm (6.5") Polypropylene, TDSC	Tweeter 25mm (1") TPTTD-I, TPAF Bass / Midrange 165mm (6.5") Polypropylene, TDSC	Tweeter 25mm (1") TPTTD-I, TPAF Bass / Midrange 2 x 133mm (5.25") Polypropylene, TDSC	Tweeter 25mm (1"), TPTTD-I, TPAF Bass / Midrange 133mm (5.25") Polypropylene, TDSC
Recommended Amplifier Power	40 - 200W	20 - 140W	20 - 120W	20 - 120W
Sensitivity	89dB	88dB	88dB	87dB
Crossover Points	345Hz 5.1kHz	2kHz	3.2kHz	3.2kHz
Impedance	6ohm	6ohm	6ohm	6ohm
Frequency Response	36Hz - 40kHz	40Hz - 40kHz	42Hz - 40kHz	46Hz - 40kHz
Dimensions (H x W x D)	100.5 x 21 x 27 cm	36 x 21 x 25.3 cm	17 x 50 x 20.9 cm	27 x 17 x 22.9 cm
Net Weight	41.6 kg / pair	13.8 kg / pair	5.9 kg / pc	8.3 kg / pair
Finishes		Black	Wenge	Walnut

Floorstanding models: The height and weight - excluding spikes / feet and including a base.

Elegant and discreet with great sound!

AZURE OW Series



Based on the Azure v.2 technology the Azure OW-80 LCRS is designed to work in front (left and right), center or surround channels in multi-channel theatre systems.

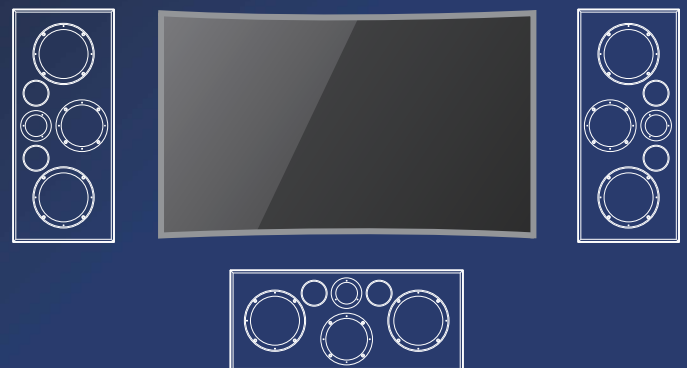
The speaker is ready for on-wall installations in both vertical and horizontal orientation or can be discreetly placed into custom-built cabinetry.

Easy and secure installation thanks to 4 built-in wall mounts. Slim and non-intrusive design – just 15cm deep.

The AZURE OW-80 LCRS speaker is dedicated for very demanding home-theatre enthusiasts, who look for the best sound performance and for those who appreciate simplicity and discretion.

AZURE OW-80 LCRS

Speaker Type	Left / Center / Right / Surround
Drivers Configuration	Tweeter 25mm (1") TPTTD-I, TPAF Midrange 133mm (5.25") Polypropylene, TDSC Bass 2 x 165 mm (6.5") Polypropylene, TDSC
Recommended Amplifier Power	20 - 200W
Sensitivity	89dB
Crossover Points	500Hz 2.4kHz
Impedance	6ohm
Frequency Response	38Hz – 40kHz
Dimensions (H x W x D)	70 x 30.5 x 15 cm (in vertical orientation)
Net Weight	13.5 kg / pc
Finishes	High Gloss White High Gloss Black



The Azure OW series is an ideal partner for modern curved TVs.

Wind of Change!

Audio-Video Series



TAV-616F SE

Although AUDIO-VIDEO Series can be named "a bargain of the century", there is no place for any sacrifices in music or home theatre performance.

Our devoted to music team of professional engineers and designers has put all its knowledge and heart into building the AUDIO-VIDEO Series: still very affordable but at the same time reliable, with perfect quality, design and sound performance never before found in products of this price range.

The advanced, high class tweeters, which are available in different configurations depending on a model:

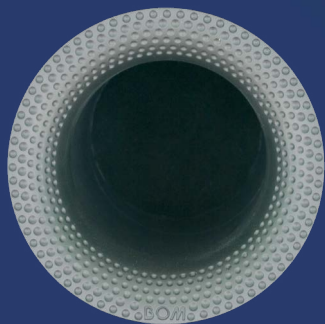
TPTTD-I (Taga Pure Titanium Tweeter Dome) with pure aluminum faceplate to enhance sound dispersion.

Soft domes with the specialized horn-like **TWG** TAGA Waveguide design of the tweeter faceplate utilizing concave diffusers supports equal and flat dispersion of sound in and off the axis of the driver.



The midrange drivers utilizing rigid and ultra-light cones with the elastic rubber suspension can move very fast and frequently allowing mid-range frequencies to be very rich, spacious and sweet.

The bass drivers utilizing heavy duty voice coils, coil former and cones for increased power handling, can play deep, precise and detailed bass.



The **BOM** Bassreflex Omnidirectional Module - low-turbulence and high-velocity ports utilizing concave diffusers for increased dispersion of low frequencies.



The high quality, gold-plated banana binding posts.



In its class, complete revelation.



TAV-616F



- [TAV-616F SE only] **the 2nd generation TPTTD-I** with TPAF utilizes a differently shaped and lighter titanium cone as well as a double-magnet structure – it has a higher SPL, faster and more accurate movement of the dome reflecting in more detailed and airy sound.
- [TAV-616F SE only] high-end binding posts and internal OFC wiring – **the same as in the CORAL series.**
- [TAV-616F SE only] **luxurious 7-layer high gloss white painting.**
- More rigid and neutral to vibrations and colorization **TLIE** enclosures. 3 mm thicker MDF walls compared to the TAV-606. Increased cabinet dimensions provide bigger internal volume and acoustic pressure reflecting in higher dynamics and lower bass.
- **Revised bass drivers and bass / midrange driver cones** – now lighter with a higher SPL and faster, more accurate cone movement to quickly react to changes in dynamic sound passages. The checkered structure of the cone helps to lower the intermodulation distortion.
- **New decorative pure aluminum trim rings** to enhance sound dispersion.



TAV-616C



TAV-616S

	TAV-616F SE* / TAV-616F	TAV-616C	TAV-616S
Speaker Type	Floorstanding	Center	Surround
	Tweeter 25mm (1")	Tweeter 25mm (1")	Tweeter 25mm (1")
Drivers Configuration	Midrange 165mm (6.5") Bass 2 x 165mm (6.5")	Bass / Midrange 2 x 133mm (5.25")	Bass / Midrange 133mm (5.25")
Recommended Amplifier Power	20 - 160W	20 - 120W	20 - 120W
Sensitivity	91dB	88dB	80dB
Crossover Points	470Hz 3kHz	4kHz	3kHz
Impedance	6ohm	6ohm	6ohm
Frequency Response	36Hz - 25kHz	50Hz - 25kHz	50Hz - 25kHz
Dimensions (H x W x D)	98 x 23 x 28 cm	20 x 46.5 x 14.45 cm	30 x 20 x 14.45 cm
Net Weight	34.3 kg / pair	5.2 kg / pc	7.7 kg / pair
Finishes	Black	Wenge Walnut	White High Gloss White [TAV-616F SE only]

Floorstanding models: The height excluding spikes.

* Picture shown in the previous page.

Audio-Video Special Edition



TAV-606F SE



TAV-606C SE



TAV-606S SE



TAV-606F SE

Floorstanding
 Tweeter 25mm (1")
 TWG

 Midrange
 133mm (5.25")

 Bass 2 x 165mm (6.5")

 20 - 150W

 91dB
 650Hz - 4.5kHz
 6ohm
 36Hz - 25kHz
 98 x 23 x 25 cm
 30.2 kg / pair

Black

TAV-606C SE

Center
 Tweeter 25mm (1")
 TWG

 Bass / Midrange
 2 x 102mm (4")

 20 - 100W

 88dB
 4.5kHz
 6ohm
 52Hz - 25kHz
 16.5 x 43 x 14.5 cm
 3.5 kg / pc

Wenge

TAV-606S SE

Surround
 Tweeter 25mm (1")
 TWG

 Bass / Midrange
 102mm (4")

 20 - 100W

 88dB
 4.5kHz
 6ohm
 52Hz - 25kHz
 26.5 x 16.5 x 14.5 cm
 4.5 kg / pair

Walnut

White



TAV-906F



TAV-906S



TAV-906C



TAV-806F



TAV-806S



TAV-806C

	TAV-906F	TAV-906C/S	TAV-806F	TAV-806C/S
Speaker Type	Floorstanding	Center / Surround	Floorstanding	Center / Surround
Drivers Configuration	Tweeter 85 x 60mm TRT, TPAF Midrange 133mm (5.25") Bass 2 x 133mm (5.25")	Tweeter 85 x 60mm TRT, TPAF Bass / Midrange 2 x 102mm (4") (C) 102mm (4") (S)	Tweeter 25mm (1") TWG Midrange 133mm (5.25") Bass 2 x 203mm (8")	Tweeter 25mm (1") TWG Bass / Midrange 2 x 133mm (5.25") (C) 133mm (5.25") (S)
Recommended Amplifier Power	20 - 165W	20 - 100W	20 - 180W	20 - 100W (C) / 20 - 120W (S)
Sensitivity	89dB	88dB	89dB	88dB (C) / 87dB (S)
Crossover Points	500Hz 3.8kHz	3.5kHz	600Hz 4kHz	5.6kHz (C) / 5kHz (S)
Impedance	6ohm	6ohm	6ohm	6ohm
Frequency Response	40Hz - 28kHz	52Hz - 28kHz	30Hz - 25kHz	53Hz - 25kHz
Dimensions (H x W x D)	97.5 x 17 x 26.5 cm	14 x 40 x 16 cm (C) 24.5 x 14 x 14.5 cm (S)	108 x 24.5 x 31.2 cm	18 x 50 x 18 cm (C) 30 x 18 x 18 cm (S)
Net Weight	32.5 kg / pair	4 kg / pc (C) 4.8 kg / pair (S)	36.8 kg / pair	5.1 kg / pc (C) 6.3 kg / pair (S)
Finishes		Black	Wenge Walnut	

Floorstanding models: The height excluding spikes.



TAV-606F v.3



TAV-606C/S v.3



TAV-506F v.2



TAV-506C/S v.2

TAV-606F v.3	TAV-606C/S v.3	TAV-506F v.2	TAV-506C/S v.2
Floorstanding	Center / Surround	Floorstanding	Center / Surround
Tweeter 25mm (1") TWG	Tweeter 25mm (1") TWG	Tweeter 25mm (1") TWG	Tweeter 25mm (1") TWG
Midrange 133mm (5.25")	Bass / Midrange 2 x 102mm (4") (C) 102mm (4") (S)	Midrange 133mm (5.25")	Bass / Midrange 2 x 102mm (4") (C) 102mm (4") (S)
Bass 2 x 165mm (6.5")		Bass 2 x 133mm (5.25")	
20 - 120W	20 - 100W	20 - 120W	20 - 100W
90dB	88dB (C) / 86dB (S)	89dB	88dB (C) / 86dB (S)
500Hz - 3.8kHz	4.5kHz	700Hz - 3.8kHz	4.5kHz
6ohm	6ohm	6ohm	6ohm
40Hz - 25kHz	55Hz - 25kHz	42Hz - 25kHz	55Hz - 25kHz
98 x 23 x 25 cm	16.5 x 43 x 14.5 cm (C) 26.5 x 16.5 x 14.5 cm (S)	90 x 17 x 23.5 cm	14 x 40 x 14.5 cm (C) 24.5 x 14 x 14.5 cm (S)
27 kg / pair	3.5 kg / pc (C) 4.5 kg / pair (S)	20.4 kg / pair	2.8 kg / pc (C) 3.5 kg / pair (S)
Black Wenge	Walnut White	Black Wenge	Walnut White Matt PVC

Audio-Video



TAV-506F v.2



TAV-406F v.2



TAV-406C/S v.2

	TAV-406F v.2	TAV-406C/S v.2
Speaker Type	Floorstanding	Center / Surround
Drivers Configuration	Tweeter 25mm (1") TWG Midrange 133mm (5.25") Bass 2 x 165mm (6.5")	Tweeter 25mm (1") TWG Bass / Midrange 2 x 102mm (4") (C) 102mm (4") (S)
Recommended Amplifier Power	20 - 120W	20 - 100W
Sensitivity	89dB	88dB (C) / 86dB (S)
Crossover Points	500Hz 3.8kHz	4.5kHz
Impedance	6ohm	6ohm
Frequency Response	44Hz - 25kHz	58Hz - 25kHz
Dimensions (H x W x D)	88 x 20 x 23 cm	15 x 38 x 16 cm (C) 25 x 15 x 16 cm (S)
Net Weight	20 kg / pair	3.4 kg / pc (C) 4.6 kg / pair (S)
Finishes	Black	Wenge Walnut

Floorstanding models: The height excluding spikes.

Audio-Video Active Subwoofers

TSW Series subwoofers are a single driver, bassreflex constructions with built-in high-current amplifiers. They deliver the most powerful, deep bass with staggering definition, location and dynamics never met at these price levels before. Our high-power and high-current amplifiers deliver astonishingly deep, thundering bass with perfect definition. Advanced subwoofer drivers with the extended cone excursion ensure superior flat power response and ultra-low distortions at any volume levels.

Our TSW subwoofer is an ideal complement to your sound system both in stereo and home theatre systems.



Our ultra-light and ultra-rigid paper cone bass drivers (with light paper dust caps, ferrum injection-molded chassis and oversized magnets) offer high power handling as well as deep, precise and detailed bass performance. The rubber, elastic surround allows for the extended cone excursion.

Our subwoofers use high-power and high-current amplifiers as well as high-power transformers and massive heatsinks to ensure full power and dynamics delivery at any time and any volume levels.



	VIGOR SW-8	TSW-90 v.3	TSW-120 v.2	TSW-200
Speaker Type	Active Subwoofer	Active Subwoofer	Active Subwoofer	Active Subwoofer
Bass Driver	203mm (8")	255mm (10")	255mm (10")	305mm (12")
Built-in amplifier	90W RMS 250W Dynamic Peak	90W RMS 250W Dynamic Peak	120W RMS 350W Dynamic Peak	200W RMS 600W Dynamic Peak
Cut-Off Frequency	35Hz - 150Hz variable	35Hz - 150Hz variable	35Hz - 150Hz variable	35Hz - 150Hz variable
Frequency Response	34Hz - 150Hz	30Hz - 150Hz	28Hz - 150Hz	25Hz - 150Hz
Dimensions (H x W x D)	31.5 x 28 x 33 cm (incl. feet)	40 x 33 x 40.5 cm (incl. feet)	40 x 33 x 40.5 cm (incl. feet)	41 x 37 x 42.5 cm (incl. feet)
Net Weight	10 kg / pc	15 kg / pc	16.4 kg / pc	21.2 kg / pc
Finishes		Black High Gloss White	Wenge High Gloss Black	Walnut White Matt Black

To fit any room and bring you plenty of joy!

inMOVE Series

Our Home Theatre 5.1 packs combine compact sized satellites and a center speaker with a choice of high-power active subwoofers. They are dedicated to those fans of high-end sound who wish their systems physically “disappear” in a room. Thanks to compact dimensions our systems allow easy placement and hiding speakers around a room. Surely the sound will not be hidden – **your neighbors and you would be able to hear and feel it!**



inMOVE 5.0
Bass/Midrange driver



The TAGA bass / midrange with TPAIC Taga Pure Aluminum Injection-molded chassis. The TAGA TAVS Air Ventilation System helps dispersing internal heat to provide even higher long-term power handling.

	inMOVE 5.0	inMOVE 5.0	inMOVE 8
Speaker Type	Satellite	Center	Active Subwoofer
Drivers Configuration	Tweeter 25mm (1") TWG Bass / Midrange 76mm (3"), TPAIC, TAVS	Tweeter 25mm (1") TWG Bass / Midrange 2 x 76mm (3"), TPAIC, TAVS	Bass 203mm (8") THAW
Recommended Amplifier Power	20 - 80W	20 - 80W	Built-in amplifier, 90W RMS 250W Dynamic Peak, THCA
Sensitivity	85dB	85dB	
Impedance	6ohm	6ohm	
Frequency Response	65Hz - 20kHz	65Hz - 20kHz	30Hz - 150Hz
Dimensions (H x W x D)	20 x 11.6 x 16.9 cm	12 x 30.5 x 15 cm	26 x 24.5 x 28.2 cm (incl. feet)
Net Weight		9.7 kg / set	8 kg / pc
Finishes		High Gloss White High Gloss Black Matt Black	

Simply click or tap to change your music to the High Fidelity Sound experience!

Multimedia Series

If you are already sick with buzzing toys pretending to be “audio” speakers your search has finally ended. Our Multimedia series offers real hi-fi and audiophile solutions to get the best sound performance from your computer, smartphone or other portable and stationary sources.

The most important components of our speakers are high-power, high fidelity built-in HPCDA class D amplifiers, sophisticated and advanced audiophile grade drivers are developed by our engineering team the same which created TAGA Harmony high-end loudspeakers.

The result is your music, video and games come alive with a spacious, natural, crystal clear and rich sound with fast, dynamic and deeply extended bass.



inTONE 2.1



Depending on your mood, change the color of your inTONE 2.1 grills!
The choice of 4 appealing colors of grills offered in optional packages!

Speaker Type	Active 2.1ch subwoofer with satellites
Drivers Configuration	Satellite: Tweeter 25mm (1") TWG Bass/Midrange 102mm (4") Subwoofer: Bass 203mm (8")
Built-in Amplifier Power	Satellites channels: 2 x 25W RMS / 90W Dynamic Peak Subwoofer channel: 60W RMS / 200W Dynamic Peak HPCDA Class D
Frequency Response	Satellites: 110Hz - 20kHz Subwoofer: 38Hz - 150Hz
Connectivity Wired	3.5mm stereo jack, RCA stereo, USB (MP-3 and charging up to 700mA), SD/MMC card (MP-3)
Connectivity Wireless	Bluetooth® v3.0
Remote Control / Display	Remote control, LED display
Power Requirements & Consumption	AC 220V - 230V / 50Hz; 150W
Dimensions (H x W x D)	22.5 x 13.5 x 16 cm (Sat.) 24.5 x 24.5 x 27 cm (Sub.)
Net Weight	Satellites: 4.4 kg / pair Subwoofer: 6.8 kg / pc
Finishes	High Gloss White, High Gloss Black Black Grills included

inTONE 2.1 mini



Speaker Type	Active 2.1ch subwoofer with satellites
Drivers Configuration	Satellite: Tweeter 25mm (1") TWG Bass/Midrange 76mm (3") Subwoofer: Bass 165mm (6.5")
Built-in Amplifier Power	Satellites channels: 2 x 18W RMS / 65W Dynamic Peak Subwoofer channel: 2 x 25W RMS / 2 x 90W Dynamic Peak (dual voice coil bass driver) HPCDA Class D
Frequency Response	Satellites: 120Hz - 20kHz Subwoofer: 45Hz - 150Hz
Connectivity Wired	3.5mm stereo jack, RCA stereo, USB (MP-3 and charging up to 700mA), SD/MMC card (MP-3)
Connectivity Wireless	Bluetooth® v4.0
Remote Control / Display	Remote control, LED display
Power Requirements & Consumption	AC 220V - 230V / 50Hz; 150W
Dimensions (H x W x D)	19 x 11.5 x 14 cm (Sat.) 24.8 x 17 x 29.6 cm (Sub.)
Net Weight	Satellites: 2.6 kg / pair Subwoofer: 4.8 kg / pc
Finishes	Black, Wenge, Walnut



Multimedia Series



iMPACT 2.0

Speaker Type	Tabletop/Bookshelf Active Speaker
Drivers Configuration	Tweeter 25mm (1") TWG Bass/Midrange 76mm (3"), TPAIC, TAVS
Built-in Amplifier Power	2 x 18W RMS / 65W Dynamic Peak, HPCDA Class D
Frequency Response	60Hz - 20kHz
Connectivity Wired	Digital-Coaxial, 3.5mm stereo jack, RCA stereo, SD/MMC card, USB (MP-3 and charging up to 700mA)
Connectivity Wireless	Bluetooth® v4.0
Remote Control / Display	LED display
Power Requirements & Consumption	AC 220V - 230V / 50Hz; 100W
Dimensions (H x W x D)	20 x 11.6 x 16 cm
Net Weight	3.8 kg / pair
Finishes	High Gloss Black Matt White Matt Black



Depending on your mood, change the color of your iMPACT 2.0 grills!
The choice of 4 appealing colors of magnet grills offered in optional packages!

TAV-500B



Speaker Type	H-Fi Tabletop/Bookshelf Active Speaker
Drivers Configuration	Tweeter 25mm (1") TWG Bass/Midrange 165mm (6.5")
Built-in Amplifier Power	2 x 25W RMS / 90W Dynamic Peak, HPCDA Class D
Frequency Response	52Hz - 20kHz
Connectivity Wired	3.5mm stereo jack, RCA stereo, USB (MP-3 charging up to 700mA), SD/MMC card reader (MP-3)
Connectivity Wireless	Bluetooth® v3.0
Power Requirements & Consumption	AC 220V - 230V / 50Hz; 100W
Dimensions (H x W x D)	32 x 20 x 26 cm
Net Weight	11.1 kg / pair
Finishes	Black, Wenge, Walnut



The perfect high-fidelity addition to your system!

Electronics Series

HTA-2000B v.2

High-End Hybrid Amplifier
with built-in DAC Converter

TAGA Harmony HTA-2000B v.2 is our flagship 150W high-end hybrid integrated amplifier utilizing a 12AX7 tube preamp section with a cathode type amp circuit and a 12AU7 SRPP stage serving as a buffer amplifier.

Analog inputs with high-end solid machined brass RCA sockets can accommodate up to 3 stereo devices including a turntable (both MM and MC cartridges) so you can enjoy music from your favorite vinyl records.

You can connect a range of digital devices and a built-in premium high-resolution 32bit / 384kHz DAC will always provide the best sound performance. A USB DAC input is a perfect choice for playing digital music from computers, servers or compatible smartphones.

The HTA-2000B v.2 is also an ideal companion for mobile devices – stream music from smartphones, tablets or computers compatible with **Bluetooth®**.

For those who prefer discrete listening we equipped the HTA-2000B v.2 with a high-end headphone preamplifier.

A preamplifier output is dedicated for an optional external power amplifier or powered subwoofer and speakers.

The HTA-2000B v.2 is a splendid mixture of analog tube sound, power, precision, purity and multidimensional soundstage imaging!



Bluetooth™ Class A / B



Power Output	2 x 150W, 8ohm, Class A/B
DAC Resolution	32bit / 384kHz
Vacuum Tubes	2 x 12AX7; 2 x 12AU7
Inputs	Analog: CD, Line, Phono (MM/MC) Digital: USB (for computer), Optical
Outputs	RCA Pre-Out
Headphones	Impedance 32-320ohm, Output Power 1W 16ohm
Signal/Noise ratio	90dB
Connectivity Wireless	Bluetooth® v4.0
Frequency Response	20Hz – 20kHz (+/- 0.5dB)
Power Requirements & Consumption	230V 50Hz, 450W
Dimensions (H x W x D)	14.2 x 43 x 38 cm
Finishes	Black, Silver

The high-performance tubes and precise high voltage transistor hybrid power supply provide voltage stability and very low AC ripple current. It reflects in a more natural and fresh sound with deep multidimensional soundstage.

The high-power transistors utilized in the 0dB current amplification circuit reveal more content of the music, giving extra pure energy and dynamics to drive even very demanding and powerful speakers.

The tube circuit cross-connected with audiophile grade MKP capacitors ensures stable playback improving music tone and sound field depth.

The audiophile grade Japanese ALPS volume potentiometer provides minimal noises and channels crosstalk and has excellent operational feel and limits errors between the two channels.

The oversized aluminum heat sink system helps to disperse internal heat and allows for long term high power playback with limited distortions.

The high-end class, gold-plated speaker terminals offer almost lossless audio signal transmission to speakers.

The perfect high-fidelity addition to your system!

Electronics Series

HTA-2000B High-End Hybrid Amplifier with built-in DAC Converter

TAGA Harmony HTA-2000B is a high-end hybrid integrated amplifier utilizing a 12AX7 tube preamp section with a cathode type amp circuit and a 12AU7 SRPP stage serving as a buffer amplifier. This solution ensures a very warm, linear and lifelike sound with high dynamic presentation at the same time.

The HTA-2000B can be used with variety of analog and digital sources. It has 3 analog gold-plated stereo RCA inputs built-in as well as a digital interface with 2 inputs (Coaxial and Optical) using 24 bit / 192 kHz digital-analog conversion. Besides our amplifier offers wireless connectivity based on **Bluetooth®** wireless technology.



If you are looking for a powerful amplifier with the smooth natural sound that only a tube amp can provide, the HTA-2000B is probably the best choice on the market. It offers the best sound quality which is more than hard to overcome in its price point.



Class A / B



Power Output	2 x 100W, 8ohm, Class A/B
DAC Resolution	24bit / 192kHz
Vacuum Tubes	2 x 12AX7; 2 x 12AU7
Inputs	Analog: CD, Line, AUX Digital: Optical, Coaxial
Signal/Noise ratio	90dB
Connectivity Wireless	Bluetooth® v4.0
Frequency Response	20Hz – 20kHz (+/- 0.5dB)
Power Requirements & Consumption	220V - 230V 50/60Hz, 380W
Dimensions (H x W x D)	15.5 x 43 x 37.5 cm
Finishes	Black, Silver-White

The high-performance tubes and precise high voltage transistor hybrid power supply provide voltage stability and very low AC ripple current. It reflects in a more natural and fresh sound with deep multidimensional soundstage.

The high-power transistors utilized in the 0dB current amplification circuit reveal more content of the music, giving extra pure energy and dynamics to drive even very demanding and powerful speakers.

The tube circuit cross-connected with audiophile grade MKP capacitors ensures stable playback improving music tone and sound field depth.

The audiophile grade Japanese ALPS volume potentiometer provides minimal noises and channels crosstalk and has excellent operational feel and limits errors between the two channels.

The oversized aluminum heat sink system helps to disperse internal heat and allows for long term high power playback with limited distortions.

The high-end class, gold-plated speaker terminals offer almost lossless audio signal transmission to speakers.

Electronics Series

HTA-700B v.2 / HTA-700B SE v.2

Hybrid Integrated Amplifier
with built-in DAC Converter

This midi sized integrated amplifier offers impressive powerful sound.
Thanks to its hybrid design it provides richness of sound synonymous with pure valve amplification.

You can connect it directly to your computer through a USB input port and thanks to a built-in high-resolution premium USB-DAC 24bit/192kHz you are able to change your digital music to a thrilling music experience.

To make your life even easier along with a standard RCA stereo input this amplifier offers wireless connectivity based on **Bluetooth®** wireless technology.

Direct transmission of audio signal from input sources to the „pre-out” output with the variable volume level control allows to connect an external power amplifier, subwoofer and speakers.

Headphone output is a perfect choice for those who prefer discrete listening.

The removable IEC power cable gives you an option to upgrade your system with a premium audiophile power cable in any time.



MONO STEREO





HTA-700B v.2 / HTA-700B SE v.2

New in v.2 version:

Increased power to 45W per channel at 4 Ohm. Now your music will play louder, more clearly and with higher dynamics!

Redesigned and enlarged power supply to offer better voltage stability and decreased AC ripple current. It reflects in a more natural and fresh sound with deep multidimensional soundstage.

Upgraded, audiophile grade volume potentiometer to provide lower noises and channels crosstalk, and excellent operational feel as well as to limit errors between the two channels.

Extended frequency response up to 28kHz to ensure more linear and lifelike sound and improve sound filed depth.



Class A / B



Power Output	2 x 45W, 4ohm 2 x 35W, 6ohm 2 x 26W, 8ohm
DAC Resolution	24bit / 192kHz
Vacuum Tubes	2 x 6N2 (HTA-700B v.2) 2 x 12AX7B (HTA-700B SE v.2)
Inputs	CD RCA, USB (for computer)
Outputs	Stereo RCA, Headphones
Connectivity Wireless	Bluetooth® v4.0
Frequency Response	20Hz - 28kHz
Headphone Impedance	32ohm - 320ohm
Power Requirements & Consumption	230V / 50Hz, 100W
Dimensions (H x W x D)	14 x 17.7 x 27 cm
Finishes	Black, Silver

HTA-500B Hybrid Integrated Amplifier



Taga HTA-500B sehr gut



Bluetooth Class A / B



This midi sized integrated amplifier provides impressive powerful sound.

Thanks to its hybrid design (based on two 6N2 vacuum tubes) it provides richness of sound synonymous with pure valve amplification.

To make your life even easier along with a standard RCA and 3.5mm stereo inputs HTA-500B offers wireless connectivity based on the **Bluetooth®** wireless technology.

Power Output	2 x 25W, 4ohm, Class A/B
Vacuum Tubes	2 x 6N2
Inputs	3.5mm stereo jack, RCA stereo CD, RCA stereo AUX
Connectivity Wireless	Bluetooth® v4.0
Power Requirements & Consumption	230V - 240V / 50Hz; 60W
Dimensions (H x W x D)	13 x 18 x 24 cm
Finishes	Black, Silver

HTR-1000CD Hybrid Stereo CD-Receiver

The HTR-1000CD is a high-fidelity, midi sized stereo hybrid DAB+ / FM receiver with a built-in CD player.

High power 75W per channel can properly drive different types of speakers. Now your music will play louder, more clearly and with higher dynamics!

All-in-one stereo system with no compromises in sound performance.



Bluetooth™ Class A / B



Hybrid design utilizing two 12AX7B tubes in the preamp section ensures a very warm, linear and lifelike sound with high dynamic presentation at the same time.

DAB+ (Digital Audio Broadcasting) tuner - listen to your favorite radio stations in the best digital quality. Enjoy your digital radio in high-resolution, crystal clear sound.

USB input – quickly and easily play your music from USB flash drivers (MP3 and WMA audio files).

Bluetooth® wireless audio streaming – stream your music from any smartphone, tablet, computer or other digital device.

Equalizer and treble-bass control to perfectly adjust the music to your preferences.

High-end banana speaker terminals accept raw speaker cables up to 10AWG and the most popular types of connectors.

I recommend it with pleasure and conviction.

Power Output	2 x 75W RMS, 4ohm, Class A/B
Vacuum Tubes	2 x 12AX7B
CD Player	CD-Audio, CD-R/RW (MP3, WMA audio files)
Inputs	RCA stereo, 3.5mm stereo jack (front) USB (MP3, WMA audio files)
Connectivity Wireless	Bluetooth® v4.0
Tuner	FM (87.5 – 108MHz), RDS DAB+ (174.928 – 239.200MHz)
Radio Presets	20 FM / 30 DAB
Power Requirements & Consumption	220V - 240V 50/60Hz, 70W
Dimensions (H x W x D)	14 x 24.5 x 29.5 cm
Finishes	Black



Pure Class A Vacuum Tube Headphone DAC/Amplifiers

Our hybrid vacuum tube/solid state headphone amplifiers utilize discrete MOSFET outputs and a 12AX7 vacuum tube. Pure Class A, single ended design with no negative feedback offers the best sound performance and powerful sound. The THDA amplifiers use only fully discrete circuits with audiophile-grade Wima coupling and Rubycon power supply capacitors.

You can connect them directly to your computer through a USB input and thanks to the built-in high-resolution premium USB-DAC 24bit/192kHz you are able to change your digital music to a thrilling music experience.



REVELATION



Class A

THDA-500T

Thanks to a 3.5V stereo preamp output you can connect your THDA-500T directly to a power amplifier or powered speakers.

A precisely made, extremely quiet and stable, linear internal power supply supports ultra-high-end sound performance. The removable IEC power cable gives you an option to upgrade your system with a premium audiophile power cable in any time. Stunning sound embedded in a very rigid, non-resonant and luxurious steel-aluminum casing.



Power Output	2 x 500mW / 100ohm load
DAC Resolution	24bit / 192kHz
Vacuum Tubes	1 x 12AX7
Inputs	RCA stereo AUX, USB (for computer)
Outputs	RCA Pre-Out
Headphone Impedance	30ohm to 300ohm (1/4")
AC Power, Power Consumption	220V-240V 50/60Hz, 10W
Dimensions (H x W x D)	12 x 17 x 23.5 cm
Finishes	Black

THDA-200T

This miniature and sweet Class A vacuum tube headphone amplifier provides a clear, rich and powerful sound.

It is portable yet powerful and the high-end sound has never been so affordable before!

Power Output	2 x 500mW / 100ohm load, Pure Class A
DAC Resolution	24bit / 192kHz
Vacuum Tubes	1 x 12AX7
Inputs	RCA stereo AUX, USB (for computer)
Headphone Impedance	30ohm to 300ohm (1/4")
Power Requirements & Consumption	DC 18V / 1A
Dimensions (H x W x D)	5 x 15 x 11.5 cm
Finishes	Black



DA-300 Digital - Analog Converter



The powerful, slim and elegant piece of art delivering best music directly from your digital source!

This miniature Digital-Analog Converter converts digital audio signal from your source to a high class analog signal with clearer, richer and more powerful sound.

Thanks to its small dimensions it can be easily added to any audio system, a computer (through the USB input) or a video game console - it can be almost „invisible” but still change your digital music to a thrilling experience.



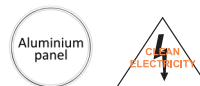
DAC Resolution	24bit / 192kHz
Inputs	Coaxial, Optical, USB (for computer)
Output	RCA stereo
Power Requirements & Consumption	DC 18V / 1A
Dimensions (H x W x D)	5 x 15 x 11.5 cm
Finishes	Black

PF-1000 High-End Audio Grade Noise Filter



PF-1000 is a perfect addition to your audio or home theatre system.

The electricity we are supplied with at our homes or workplaces is not clean and there is almost always at least some noise. This dirty electricity can have a negative effect on the audio-video performance of your system and even affects its life. PF-1000 removes noise from your electricity as well as isolates sound sources from the electrical network.



Max Spike Volt	3000V
Max Surge Current (8x20s)	1000A
Noise Filter	>-10dB (2-100MHz)
Sockets	4 direct, 4 Filtered
Power Requirements & Consumption	230V-240V 50Hz, 0.1W<
Dimensions (H x W x D)	9 x 14 x 44.5 cm
Finishes	Black

Be stable means better sound!

Speaker Stands

TAGA Harmony stands are elegant, solid and a must-have option for your bookshelf or surround speakers.



They utilize cable channel for hiding speaker cables as well as large silver spikes, which provides great stability.

Our stands isolate speakers from the floor, increasing the transparency of sound and providing better definition and the basis for the bass.



Features and specifications:

- Black matt heavy-duty painting
- Speaker wire channel
- Stable, oversized silver spikes
- Rubber pads on the upper base
- Max speaker weight: 30 kg / pc
- Central tube diameter: 4.5 cm
- Lower base dimensions (W x D) 23 x 30 cm
- Available in 3 heights 96, 76 and 66 cm

Cables & Accessories

TAGA Harmony offers top build quality Audio-Video cables with superb performance dedicated for demanding customers and installers. Although quality of our cables is high our prices are not! - now everybody can enjoy the best sound!

PLATINUM-18 Terminated Speaker Cables

The Platinum speaker cable is designed for use in premium high level hi-fi systems. Its braided construction has no surface or center and frequency-related phase shift is effectively canceled. Different frequencies signals are distributed through different paths so the internal disruptions are greatly reduced as well as losses in high registers are limited. The sound is very transparent and natural in higher and mid frequencies as well as dynamic and extended in a bass section.



Hifi Pig
RECOMMENDED

2-conductor, 8 x 1mm [18AWG] / conductor
Terminated with high-grade copper banana plugs or available in meters

Braided multi-stranded, ultra-high purity 99.99% Oxygen Free Copper wires
16 wires per 1 conductor

HDPE – Ultra low-loss, low capacitance high-density polyethylene dielectric insulation for conductors

Low friction, easy-to-pull outer PVC jacket

BLUE-12 / BLUE-16 Terminated Speaker Cables

The BLUE speaker cable is designed for use in premium hi-fi systems but it carries a very un-premium price tag! 12 or 16 gauge multi-stranded ultra-high purity OFC wiring and pure and high-grade copper banana plugs make your system to sound much better. The BLUE cable is precisely engineered for transparent sound-staging, enhanced imaging, dynamics, detail and low-pitched bass.



2-conductor, 2.05mm [12AWG] or 1.3mm [16AWG] / conductor
Terminated with high-grade copper banana plugs

Multi-stranded, ultra-high purity 99.99% Oxygen Free Copper conductors

HDPE – Ultra low-loss, low capacitance high-density polyethylene dielectric insulation for conductors

Low friction, easy-to-pull outer PVC jacket

Cables & Accessories

TAVC-SY Subwoofer Y Cables

The TAVC-SY series cables utilize special “Y” design for connecting the left and right active subwoofer inputs for increased clarity and bass response (higher gain).

Ultra-high purity OFC conductors and high-grade 24K gold-plated RCA connectors.

Now your bass will be stronger, deeper and more dynamic!

Ultra-high purity 99.99% Oxygen Free Copper conductors, Precision machined, low-profile RCA connectors with 24K gold-plated contacts

FEP - low friction and non-reactivity extra flexible insulation for conductors

Low friction, easy-to-pull outer PVC jacket



TUD A-to-B USB 2.0 Digital Cables

Because music signals are continuous streams of data, in case of any disruption or errors during transmission through a USB cable there is no chance to replace any missing part of the audio signal. It is crucial to use a high grade USB cable that preserves more information and significantly improves sound quality. TAGA Harmony high-performance USB cables are capable of minimizing transmission errors and frequency-related phase shift, what dramatically improves the sound which is more clear, natural, tight and powerful.



0.6mm [22AWG] + 0.5mm [24AWG]
Terminated with Gold-Plated connectors

Ultra-high purity 99.99% Oxygen Free Copper conductors

24 AWG conductor: HDPE – Ultra low-loss, low capacitance
high-density polyethylene dielectric insulation
22 AWG conductors: PVC
Aluminum-magnesium braid shielding and Nylon jacket

TAVC Speaker Cables



2-conductor, Available:

Transparent or Gray Jacket: 2.6mm [10AWG] & 1.6mm [14AWG]
Flat type in Gray Jacket: 1.3mm [16AWG]

Multi-stranded, CCA (Copper Clad Aluminum) conductors

Low capacitance dielectric insulation

High stability, pressure extruded, ultra-flexible clear PVC outer jacket

HD HDMI Cables



High speed HDMI cable with Ethernet, supports 3D,1080P

Gold plated connectors

Flat, flexible design for easy installation

TCB-001 BANANA Plugs



Direct gold plating

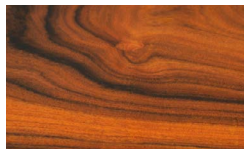
Fits speaker cables up to 10 AWG

Screw-down

Speaker Finishes



ROSEWOOD VENEER WITH CLEAR MATT OR GLOSS PIANO LACQUER



AFRICIAN WALNUT VENEER WITH CLEAR GLOSS PIANO LACQUER



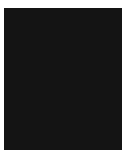
WALNUT VENEER WITH CLEAR MATT LACQUER



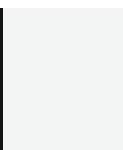
PIANO WHITE LACQUER HIGH GLOSS WHITE



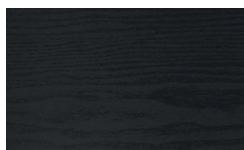
PIANO BLACK LACQUER HIGH GLOSS BLACK



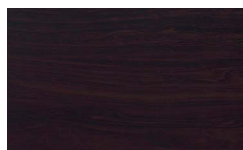
MATT BLACK



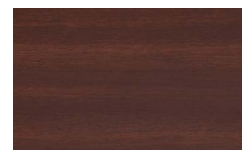
MATT WHITE WHITE MATT PVC



BLACK



WENGE



WALNUT

BLACK, WENGE, WALNUT, WHITE and WHITE MATT PVC are vinyl finishes. Not all finishes are available for all products.



WHITE

TERMINOLOGY of TECHNOLOGY

S-TLIE	SUPER TAGA LOW INTERFERENCE ENCLOSURES
TLIE	TAGA LOW INTERFERENCE ENCLOSURES
O-TPTTD	OVERSIZED TAGA PURE TITANIUM TWEETER DOME DRIVER
TPTTD	TAGA PURE TITANIUM TWEETER DOME DRIVER
TRT	TAGA RIBBON TWEETER
E-TPACD	EXTENDED TAGA PURE ALUMINIUM CONE DRIVER
TNPPCD	TAGA NON-PRESSED PAPER CONE DRIVER
TWCD	TAGA WOOLEN CONE DRIVER
TRSCD	TAGA REINFORCED STRAW CONE DRIVER
TPACD	TAGA PURE ALUMINIUM CONE DRIVER
TPAPR	TAGA PURE ALUMINIUM PASSIVE RADIATOR
TDSC	TAGA DYNAMIC SURROUND CONTROL
TPAIC	TAGA PURE ALUMINIUM INJECTION-MOLDED CHASSIS
TAVS	TAGA AIR VENTILATION SYSTEM
E-TPAF	ENLARGED TAGA PURE ALUMINIUM FACEPLATE
TPAF	TAGA PURE ALUMINIUM FACEPLATE
TWG	TAGA WAVEGUIDE FACEPLATE
TTP	TAGA TOP PLATE
TSAC	TAGA SUPER AIR COOLING
THAW	TAGA HIGH AMPLITUDE WOOFER
THCA	TAGA HIGH CURRENT AMPLIFIER
HPCDA	HIGH POWER CLASS D AMPLIFIER





TAGA[®]
HARMONY

To Achieve Glorious Acoustics

TAGA Harmony

Al. Jerozolimskie 333A
05-816 Reguly/Warsaw
Poland

Phone: +48-22-353-14-14
Email: Sales@taga-audio.com

Distributor / Dealer



www.taga-audio.com

Find TagaHarmony on social media



We reserve the right to amend details of the specifications or designs without notice in line with technical developments.
Bluetooth® is a registered trademark of Bluetooth SIG., Inc.
All other brands and product names are trademark of their respective owners.