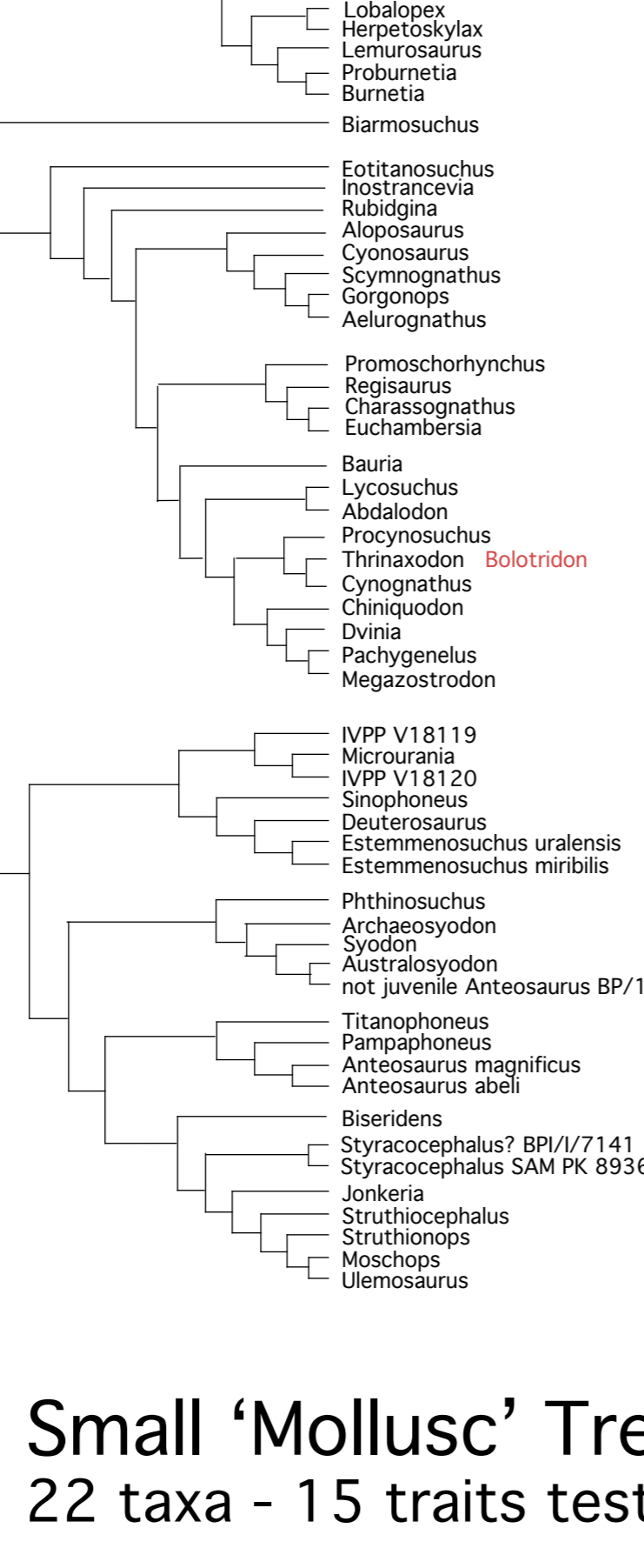


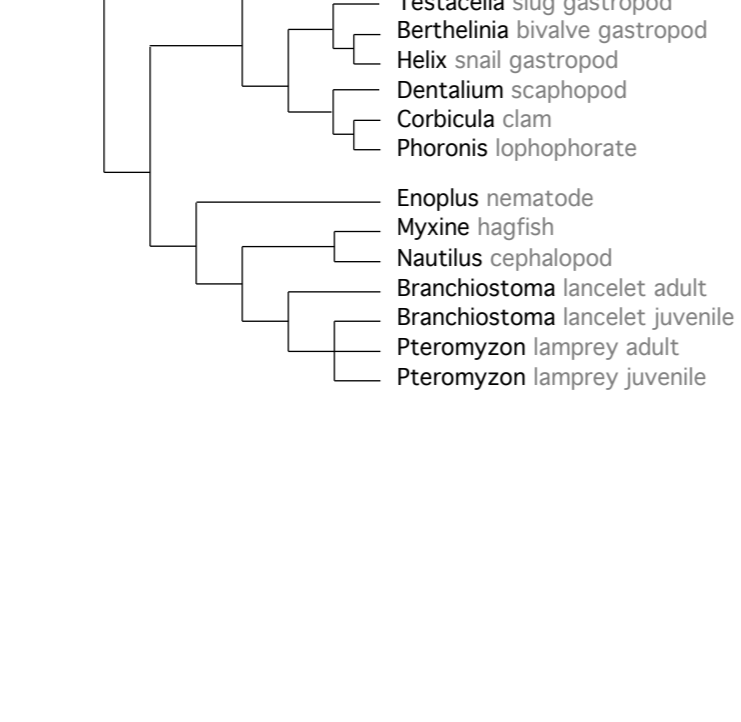


Reptile Family Tree  
Peters 2024 2320 taxa, 236 characters

Therapsid Skull Tree (TST)  
77 taxa - 78 skull traits tested



Small 'Mollusc' Tree (SMT)  
22 taxa - 15 traits tested



Note:  
These phenomic (= trait-based) trees do not support genomic (= DNA) topologies over long phylogenetic distances (= deep time).  
Dental traits may converge and do not define clades.  
The addition of taxa and scoring changes will change these tree topologies, which have grown from an initial 240 taxa to the present total.