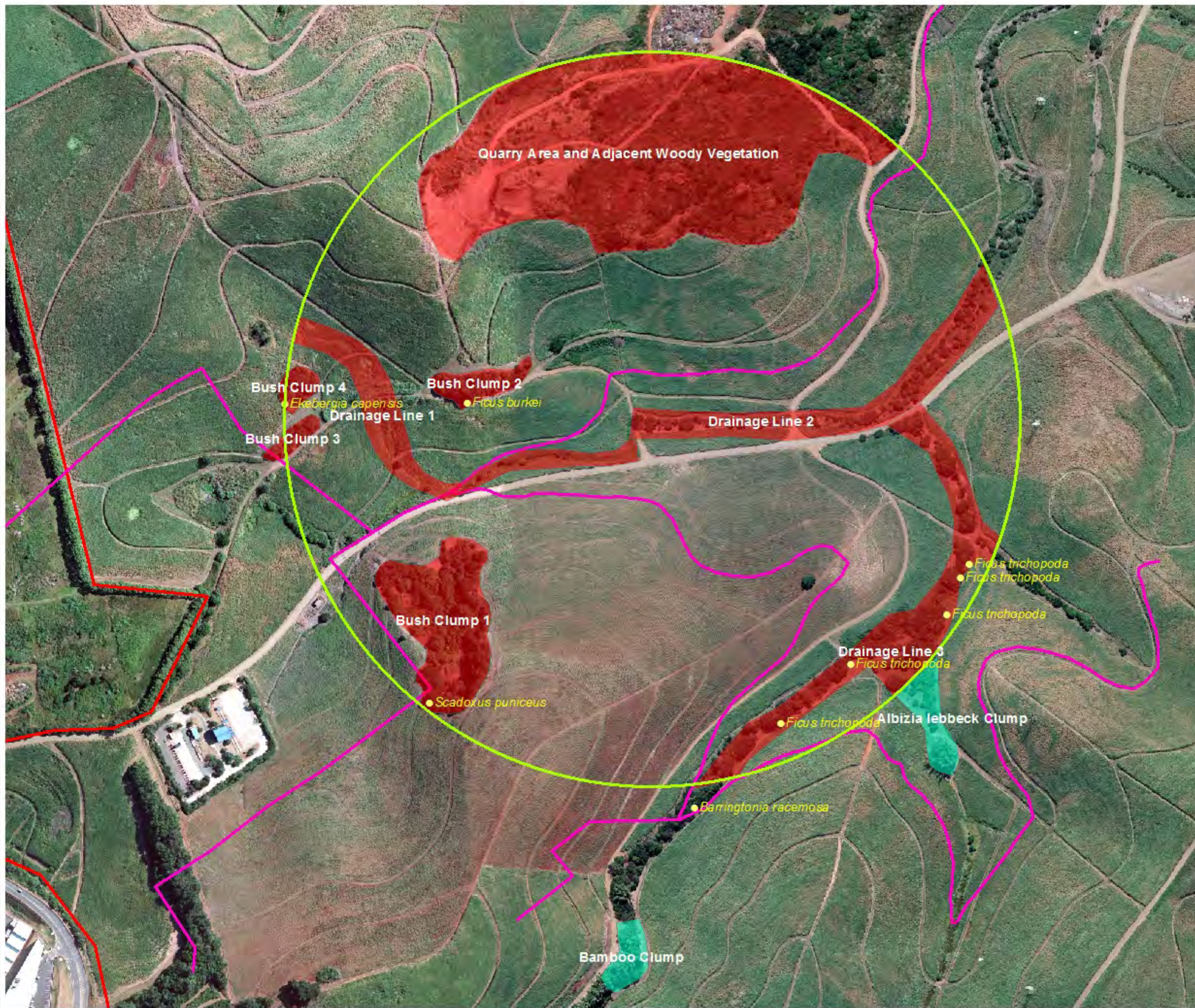


CORNUBIA VEGETATION ASSESSMENT



Detailed Assessment Areas Rehabilitation Map

Legend

-  Waste Transfer Centre Relocation Study Area
-  Bush Clumps and Drainage Lines
-  Alien Vegetation Clumps
-  Bulk Trunk Sewer Alignment



SOURCE: Ethekwini Municipality

| | | | |
|--------------------------------------------------------------------------------------------------------------------------------------------------------------------------------|-------------------------------------------------------------------------------------------------------------------------------------------------------------------------------------------------------------------------------------------------------------------------------------------------|------------|-------------|
|   |  ENVIRONMENTAL DIVISION 251 PIETERMARITZ STREET 10TH FLOOR PRESTAS BUILDING PIETERMARITZBURG, 3201 SOUTH AFRICA Phone: +27 33 2452102 Fax: +27 33 2452672 Email: info@sivest.co.za | | |
| | Project No | Map Ref No | Prepared By |
| 12079 | 12079/04 | SLB | 30/05/2013 |

"COPYRIGHT IS VESTED IN SiVEST IN TERMS OF THE COPYRIGHT ACT (ACT 98 OF 1978) AND NO USE OR REPRODUCTION OR DUPLICATION THEREOF MAY OCCUR WITHOUT THE WRITTEN CONSENT OF THE AUTHOR"

THIS MAP HAS BEEN PREPARED UNDER THE CONTROL & ESTABLISHED BY THE SiVEST QUALITY MANAGEMENT SYSTEM AND MEETS THE REQUIREMENTS OF THE SETA QUALITY GRADING SYSTEM THAT IS ISO COMPLIANT




Table 1. Plant species recorded within Bush Clump 1.

| Bush Clump 1 | | |
|----------------------------------------------|---------------|------------------|
| Plant Species | Growth Form | Status |
| <i>Scadoxus puniceus</i> | Bulb | Protected |
| <i>Acacia caffra</i> | Tree | Indigenous |
| <i>Acacia sieberiana</i> | Tree | Indigenous |
| Acanthaceae | Herb | Indigenous |
| <i>Adenopodia spicata</i> | Woody Creeper | Indigenous |
| <i>Berkheya bipinnatifida</i> | Herb | Indigenous |
| <i>Clerodendrum glabrum</i> | Tree | Indigenous |
| <i>Commelina erecta</i> | Herb | Indigenous |
| <i>Cyphostemma hypoleucum</i> | Creeper | Indigenous |
| <i>Desmodium dregeanum</i> | Herb | Indigenous |
| <i>Eragrostis curvula</i> | Graminoid | Indigenous |
| <i>Gomphocarpus physocarpus</i> | Herb | Indigenous |
| <i>Gymnosporia buxifolia</i> | Tree | Indigenous |
| <i>Hibiscus cannabinus</i> | Herb | Indigenous |
| <i>Hibiscus trionum</i> | Herb | Indigenous |
| <i>Panicum maximum</i> | Graminoid | Indigenous |
| <i>Psydrax obovata</i> subsp. <i>obovata</i> | Tree | Indigenous |
| <i>Rhoicissus tridentata</i> | Creeper | Indigenous |
| <i>Rhynchosia caribaea</i> | Creeper | Indigenous |
| <i>Senecio chrysocoma</i> | Herb | Indigenous |
| <i>Senecio helminthioides</i> | Creeper | Indigenous |
| <i>Senecio polyanthemoides</i> | Herb | Indigenous |
| <i>Sporobolus africanus</i> | Graminoid | Indigenous |
| <i>Achyranthes aspera</i> | Herb | Alien |
| <i>Chromolaena odorata</i> | Shrub | Alien |
| <i>Lantana camara</i> | Woody Shrub | Alien |
| <i>Leucaena leucocephala</i> | Tree | Alien |
| <i>Litsea glutinosa</i> | Tree | Alien |
| <i>Malvastrum coromandelium</i> | Herb | Alien |
| <i>Melia azedarach</i> | Tree | Alien |
| <i>Passiflora suberosa</i> | Creeper | Alien |
| <i>Passiflora subpeltata</i> | Creeper | Alien |
| <i>Psidium guajava</i> | Tree | Alien |
| <i>Ricinus communis</i> | Tree | Alien |
| <i>Rivina humilis</i> | Herb | Alien |
| <i>Schinus terebinthifolius</i> | Tree | Alien |
| <i>Senna bicapsularis</i> | Tree | Alien |
| <i>Senna hirsuta</i> | Woody Shrub | Alien |
| <i>Solanum lycopersicum</i> | Herb | Alien |
| <i>Solanum mauritianum</i> | Tree | Alien |
| <i>Tagetes minuta</i> | Herb | Alien |

Table 2. Plant species recorded within Bush Clump 2, most of the aliens recorded in Bush Clump 1 were also occurring in Bush Clump 2, however have not been repeated unless visibly dominant.

| Bush Clump 2 | | |
|---------------------------------|-------------|------------|
| Plant Species | Growth Form | Status |
| <i>Cissus fragilis</i> | Creeper | Indigenous |
| <i>Clerodendrum glabrum</i> | Tree | Indigenous |
| <i>Ekebergia capensis</i> | Tree | Indigenous |
| <i>Ficus burkei</i> | Tree | Indigenous |
| <i>Oxalis</i> sp. | Herb | Indigenous |
| <i>Pavetta lanceolata</i> | Tree | Indigenous |
| <i>Strelitzia nicholii</i> | Tree | Indigenous |
| <i>Litsea glutinosa</i> | Tree | Alien |
| <i>Rivina humilis</i> | Herb | Alien |
| <i>Schinus terebinthifolius</i> | Tree | Alien |

Table 3. Plant species recorded within Bush Clump 3, most of the aliens recorded in Bush Clump 1 were also occurring in Bush Clump 3, however have not been repeated unless visibly dominant.

| Bush Clump 3 | | |
|-----------------------------------------------------|-------------|------------|
| Plant Species | Growth Form | Status |
| <i>Allophylus africanus</i> subsp. <i>africanus</i> | Tree | Indigenous |
| <i>Clerodendrum glabrum</i> | Tree | Indigenous |
| <i>Maytenus peduncularis</i> | Tree | Indigenous |
| <i>Oplismenus hirtellus</i> | Graminoid | Indigenous |
| <i>Rhoicissus tridentata</i> | Creeper | Indigenous |
| <i>Senecio polyanthemoides</i> | Herb | Indigenous |
| <i>Tricalysia sonderiana</i> | Tree | Indigenous |
| <i>Turraea floribunda</i> | Tree | Indigenous |
| <i>Arundo donax</i> | Graminoid | Alien |

Table 4. Plant species recorded within Bush Clump 4, most of the aliens recorded in Bush Clump 1 were also occurring in Bush Clump 4, however have not been repeated unless visibly dominant.

| Bush Clump 4 | | |
|-----------------------------|-------------|------------|
| Plant Species | Growth Form | Status |
| <i>Clerodendrum glabrum</i> | Tree | Indigenous |
| <i>Ekebergia capensis</i> | Tree | Indigenous |
| <i>Hibiscus cannabinus</i> | Herb | Indigenous |
| <i>Vigna vexillata</i> | Creeper | Indigenous |
| <i>Ipomoea purpurea</i> | Creeper | Alien |
| <i>Senna didymobotrya</i> | Tree | Alien |
| <i>Sorghum halepense</i> | Graminoid | Alien |

Table 5. Plant species recorded within Drainage Line 1, most of the aliens recorded in Bush Clump 1 were also occurring in Drainage Line 1, however have not been repeated unless visibly dominant.

| Drainage Line 1 | | |
|---------------------------------|-------------|------------|
| Plant Species | Growth Form | Status |
| <i>Trichilia emetica</i> | Tree | Indigenous |
| <i>Ageratum conyzoides</i> | Herb | Alien |
| <i>Lantana camara</i> | Woody Shrub | Alien |
| <i>Litsea glutinosa</i> | Tree | Alien |
| <i>Melia azedarach</i> | Tree | Alien |
| <i>Psidium guajava</i> | Tree | Alien |
| <i>Schinus terebinthifolius</i> | Tree | Alien |
| <i>Thelechitonia triloba</i> | Creeper | Alien |

Table 6. Plant species recorded within Drainage Line 2, most of the aliens recorded in Bush Clump 1 were also occurring in Drainage Line 2, however have not been repeated unless visibly dominant.

| Drainage Line 2 | | |
|-----------------------------------|-------------|------------|
| Plant Species | Growth Form | Status |
| <i>Bridelia micrantha</i> | Tree | Indigenous |
| <i>Cyperus dives</i> | Sedge | Indigenous |
| <i>Ficus burkei</i> | Tree | Indigenous |
| <i>Ficus natalensis</i> | Tree | Indigenous |
| <i>Ischaemum fasciculatum</i> | Graminoid | Indigenous |
| <i>Phoenix reclinata</i> | Tree | Indigenous |
| <i>Syzygium cordatum</i> | Tree | Indigenous |
| <i>Tabernaemontana ventricosa</i> | Tree | Indigenous |
| <i>Trema orientalis</i> | Tree | Indigenous |
| <i>Ageratum conyzoides</i> | Herb | Alien |
| <i>Canna indica</i> | Herb | Alien |
| <i>Ipomoea alba</i> | Creeper | Alien |
| <i>Litsea glutinosa</i> | Tree | Alien |
| <i>Mirabilis jalapa</i> | Herb | Alien |

Table 7. Plant species recorded within Drainage Line 3, most of the aliens recorded in Bush Clump 1 were also occurring in Drainage Line 1, however have not been repeated unless visibly dominant.

| Drainage Line 3 | | |
|-------------------------------------|-------------|------------------|
| Plant Species | Growth Form | Status |
| <i>Barringtonia racemosa</i> | Tree | Protected |
| <i>Ficus trichopoda</i> | Tree | Protected |
| <i>Bridelia micrantha</i> | Tree | Indigenous |
| <i>Ficus burkei</i> | Tree | Indigenous |
| <i>Ficus lutea</i> | Tree | Indigenous |
| <i>Phoenix reclinata</i> | Tree | Indigenous |
| <i>Syzygium cordatum</i> | Tree | Indigenous |
| <i>Trema orientalis</i> | Tree | Indigenous |
| <i>Turraea floribunda</i> | Tree | Indigenous |
| <i>Albizia lebbek</i> | Tree | Alien |
| <i>Canna indica</i> | Herb | Alien |
| <i>Cestrum laevigatum</i> | Tree | Alien |
| <i>Crotalaria juncea</i> | Herb | Alien |
| <i>Litsea glutinosa</i> | Tree | Alien |
| <i>Schinus terebinthifolius</i> | Tree | Alien |
| <i>Spathodea campanulata</i> | Tree | Alien |
| <i>Thelechitonia triloba</i> | Creeper | Alien |

Table 8. Plant species recorded in the Quarry and Adjacent Woody Vegetation. All the aliens that were recorded in Bush Clump 1 were also present within this area.

| Quarry | | |
|------------------------------|-------------|------------|
| Plant Species | Growth Form | Status |
| <i>Clerodendrum glabrum</i> | Tree | Indigenous |
| <i>Erythrina lysistemon</i> | Tree | Indigenous |
| <i>Harpephyllum caffrum</i> | Tree | Indigenous |
| <i>Trema orientalis</i> | Tree | Indigenous |
| <i>Amaranthus sp.</i> | Herb | Alien |
| <i>Arundo donax</i> | Graminoid | Alien |
| <i>Lantana camara</i> | Woody Shrub | Alien |
| <i>Leucaena leucocephala</i> | Tree | Alien |
| <i>Litsea glutinosa</i> | Tree | Alien |
| <i>Melia azedarach</i> | Tree | Alien |
| <i>Phytolacca dioica</i> | Tree | Alien |
| <i>Phytolacca octandra</i> | Shrub | Alien |
| <i>Senna bicapsularis</i> | Tree | Alien |
| <i>Senna didymobotrya</i> | Tree | Alien |
| <i>Solanum mauritianum</i> | Tree | Alien |

Table 1. Plant species identified along the proposed Trunk Sewer Alignment through the Natural Forest Patch.

| Trunk Sewer Line | | |
|-----------------------------------------------------|-------------|------------|
| Plant Species | Growth Form | Status |
| <i>Abutilon</i> sp. | Herb | Indigenous |
| <i>Allophylus africanus</i> subsp. <i>africanus</i> | Tree | Indigenous |
| <i>Apodytes dimidiata</i> | Tree | Indigenous |
| <i>Asparagus africanus</i> | Herb | Indigenous |
| <i>Asystasia gangetica</i> | Herb | Indigenous |
| <i>Berkheya bipinnatifida</i> | Herb | Indigenous |
| <i>Calpurnia aurea</i> | Tree | Indigenous |
| <i>Canthium inerme</i> | Tree | Indigenous |
| <i>Chaetachme</i> cf. <i>aristata</i> | Tree | Indigenous |
| <i>Cissampelos torulosa</i> | Creeper | Indigenous |
| <i>Clerodendrum glabrum</i> | Tree | Indigenous |
| <i>Commelina erecta</i> | Herb | Indigenous |
| <i>Crotalaria lanceolata</i> | Herb | Indigenous |
| <i>Dalechampia capensis</i> | Tree | Indigenous |
| <i>Dioscorea cotinifolia</i> | Creeper | Indigenous |
| <i>Erythrina lysistemon</i> | Tree | Indigenous |
| <i>Ficus burkei</i> | Tree | Indigenous |
| <i>Grewia occidentalis</i> | Tree | Indigenous |
| <i>Halleria lucida</i> | Tree | Indigenous |
| <i>Hippobromus pauciflorus</i> | Tree | Indigenous |
| <i>Maytenus peduncularis</i> | Tree | Indigenous |
| <i>Panicum maximum</i> | Graminoid | Indigenous |
| <i>Ptaeroxylon obliquum</i> | Tree | Indigenous |
| <i>Putterlickia ventricosa</i> | Tree | Indigenous |
| <i>Rhoicissus tridentata</i> | Creeper | Indigenous |
| <i>Rhynchosia totta</i> | Creeper | Indigenous |
| <i>Searsia chirindensis</i> | Tree | Indigenous |
| <i>Setaria megaphylla</i> | Graminoid | Indigenous |
| <i>Sida dregei</i> | Herb | Indigenous |
| <i>Trimeria grandiflora</i> | Tree | Indigenous |
| <i>Turraea floribunda</i> | Tree | Indigenous |
| <i>Ageratum conyzoides</i> | Herb | Alien |
| <i>Chromolaena odorata</i> | Tree | Alien |
| <i>Conyza brasiliensis</i> | Herb | Alien |
| <i>Melia azedarach</i> | Tree | Alien |
| <i>Passiflora suberosa</i> | Creeper | Alien |
| <i>Psidium guajava</i> | Tree | Alien |
| <i>Rivina humilis</i> | Herb | Alien |
| <i>Syzygium cumini</i> | Tree | Alien |
| <i>Tagetes minuta</i> | Herb | Alien |
| <i>Tithonia diversifolia</i> | Tree | Alien |



Plate 1. Secondary grassland with *Lantana camara* encroaching within Bush Clump 1.



Plate 2. *Litsea glutinosa*



Plate 3. Borrow area embankment within Bush Clump 1.



Plate 4. *Allophylus africanus* subsp. *africanus*



Plate 5. *Ficus burkei* Bush Clump 2



Plate 6. Bush Clump 2



Plate 7. *Senna didymobotrya* (Quarry Area)



Plate 8. *Tabernaemontana ventricosa* Drainage Line 2



Plate 9. Drainage Line 2



Plate 10. Drainage Line 1



Plate 11. Cultivated lands adjacent to Drainage Line 3.



Plate 12. *Barringtonia racemosa* fruit



Plate 13. *B. racemosa* flower



Plate 14. *B. racemosa* leaves



Plate 15. Area 20 metres north of the *B. racemosa* where crossing is possible



Plate 16. *Albizia lebeck* (alien species) (Drainage Line 3)



Plate 17. *Lucaeana leucocephala* (Quarry Area)



Plate 18. View from the edge of the forest patch along the contour road running through the sugar cane.



Plate 19. View to the west along forest road



Plate 20. View to the east along the forest road