

Rhode Island Jewish HERALD

Restaurant
Review
Page 9

The Only English-Jewish Weekly in Rhode Island and Southeastern Massachusetts

VOLUME LXXVIII, NUMBER 31

SIVAN 24, 5752 / THURSDAY, JUNE 25, 1992

35¢ PER COPY

Israelis Fear Picco's Resignation

by Hugh Orgel

TEL AVIV (JTA) — Israeli officials are upset over the resignation of Giandomenico Picco, the U.N. secretary general's special negotiator for hostage releases.

They fear his departure may signal a decision by the U.N. Secretariat to put a low priority on efforts to effect the release of Israeli air force navigator Ron Arad and obtain information about the fate of other Israeli servicemen missing in Lebanon.

Picco announced his resignation after helping secure the release last week of two German relief workers who were kidnapped and held hostage for three years by Shi'ite militants in Lebanon.

The two, who returned to Germany recently, were the last of nearly 100 Americans and European hostages freed by Arab or Moslem groups in recent years.

Picco said he was quitting for "personal reasons" and it is assumed he plans to enter private business in his native Italy.

But Israelis sense the determining factor was his disagreements with his boss, U.N. Secretary General Boutros Boutros-Ghali, over future efforts to secure freedom for Arad.

The Israeli airman shot down over Lebanon in 1986, believed held by Shi'ite militants, is the only one of six

missing Israelis presumed to be alive. But Israel also demands concrete proof of the fate of the others.

Israeli defense officials fear Picco's resignation will seriously hamper future negotiations.

Moreover, they say Picco's relations with Boutros-Ghali were less flexible than with his predecessor, Javier Perez de Cuellar, who often gave his hostage negotiator a free hand.

Boutros-Ghali, an Egyptian with personal and professional ties in the Middle East, tended to rein in Picco, Israeli officials say. The U.N. secretary general frequently brushed Picco aside and personally took over contacts with Arab and Moslem authorities who influenced the hostage situation, Israelis say.

Israel's chief hostage negotiator, Uri Lubrani, also expressed regret over Picco's resignation. He noted, however, that the United Nations is not the only body involved in hostage negotiations.

"Israel must now act on its own, as it has frequently done in the past," he said.

Meanwhile, Benjamin Navon, Israel's ambassador to Germany, will meet with the top political officer of Chancellor Helmut Kohl's office in Bonn this week.

He has been instructed to obtain clarification of that official's remark recently that he had information about Arad.

Meanwhile, Bernd Schmidbauer, a top aide to Kohl in charge of coordinating intelligence agencies, was making an angry but veiled rebuttal to rumors that Germany paid heavy ransom for the freedom of its kidnapped nationals, Heinrich Struebig and Thomas Kemptner.

Although he mentioned no party by name, he seemed to be holding Israel responsible for the rumors and for what he described as pressure on mediators who were negotiating to free the hostages.

Israeli newspapers have in fact claimed in recent days that Germany paid millions for the release of its kidnapped nationals.

Commenting on reports that Picco had resigned because of an alleged ransom payment by Germany, Schmidbauer said angrily that "Picco had to endure the same kind of pressure that was put on me."

Schmidbauer was directly involved in the hostage negotiations and flew to Damascus and then to Beirut to receive the hostages and escort them back to Germany.

Since then, Israeli sources have complained that there should have been coordination that would like the release of all the hostages, including Arad.

German sources, on the other hand, have gone out of (continued on page 16)

'Covenant of Jerusalem' Unveiled



Participants at a meeting of the Conference of Presidents of Major American Jewish Organizations were the first in the U.S. to sign the "Covenant of Jerusalem," a document underscoring Jerusalem's centrality as the political capital of the Jewish state and the eternal capital of the Jewish people, on the 25th anniversary of reunification.

Key leaders of the National Coordinating Committee for Jerusalem 25, under the aegis of the Presidents Conference, are (left to right): Rabbi Joseph P. Sternstein, chairman of the Presidents Conference's National Committee for Tourism to Israel; Raphael Farber, Israel's Tourism Commissioner for North America; Marvin Lender, president of UJA and co-chairman of Jerusalem 25; Shoshana S. Cardin, Presidents Conference chairman and chairman of Jerusalem 25; and Dov Koniak, deputy general manager of El Al for North America.

Laurels For A Legend

by Mike Fink
Herald Contributing Reporter

They ripped off her earrings. Nazis murdered her. But Rabbi Baruch Korff's mother blessed her son with her last words. "I bequeath you the years they take from me."

This tale, terrifying as the scene of a mother's death in Felix Salten's prophetic "Bambi," was told among the words of tribute to a glittering group of friends and admirers at the John Hay Library on the Brown campus. On a Tuesday afternoon in June the University Librarian officially opened an exhibit to mark an addition to the Korff Archives. The event brought together distinguished members of both the Brown and the Jewish communities. President Vartan Gregorian welcomed the guests. Rabbis Avi Shafran and Shlomo Strajcher praised their colleague's dedication. Relatives from the Korff family lauded his wisdom, kindness and sense of mission. "We're all so very proud you belong to our family tree," reads a poem.

Henry Morgenthau III stood behind the podium and then spoke. He thanked Rabbi Korff for his aid in pursuing research for the recent Morgenthau family portrait published this year. "As a young rabbi, Baruch Korff went to see my father in Washington. He urged the rescue of his abandoned people. It took courage and imagination. He inspired the formation of the War Refugee board. That committee finally was able to rescue at least thousands —

tragically, not millions — of Jews from Europe."

While you listen to messages of praise and respect, you look around the former reading room. Portraits of the founders of Brown look out from canvas and gilt. Marble busts loom above from oaken shelves and sculptured alcoves. The outdoor bank of crayon-yellow forsythia against the windows was past, but tall-stemmed late spring blossoms filled high vases on heavy tables.

A generation ago, these halls would not have held a special event like this one. Jews "passed" among the mansions of the Ivy League. Now, their records and their testimony make a meaningful mark upon centers of learning.

Out in the narrow glassed-in exhibit space, the letters of Rabbi Baruch Korff, from current and past presidents and heads of state around the world, pull you down into a mystery. How did this figure from folklore get so far and rise so high? Of course he burst upon the American scene of fame in just one superb gesture. He formed a committee for fairness to President Nixon. It was Korff who announced the resignation on national TV news. This amazing event did not stand for a one-time phenomenon, however. Rabbi Korff speaks up, alone, for others, like one of the famous wandering Jews you read about in historic texts. The supporters who drank the kosher wine and ate the dainties made up a spe-

(continued on page 15)



NCJW Scholarship Recipients: Roy Katzovicz, sophomore at the University of Pennsylvania, Maurice Shore Award; Rebecca Silver, freshman at Brandeis, the Ruth Goldberg Scholar; Andrea Miller, freshman at Tulane, Maurice Shore Award; Karen Katzovicz, sophomore at Bryn Mawr, Maurice Shore Award; Richard Cohen, sophomore at University of Rhode Island, Celia Adler scholar; Beth Vilker, senior at University of Hartford; Esther Gold, freshman at Stern College, Clara Rosenhirsch scholar. Not pictured are Robin Berk, junior at Northeastern University and Lisa Mizrahi at Boston University.

INSIDE THE OCEAN STATE

Operation Water Watch

In cooperation with the U.S. Consumer Product Safety Commission, and the National Swimming Pool Safety Commission Committee, the Rhode Island Consumers' Council is launching a statewide, summer-long information campaign on residential swimming pool and spa drownings. The program is called "Operation: Water Watch" and is aimed at increasing the public's awareness about the tragic problem of drowning particularly in restricted pools and spas, and to children under five years of age.

Today pools and spas in people's homes number 6 million or more. Drowning has become the third leading cause of accidental death in the United States to children in this age group, exceeded only by automobile accidents and fire/burns according to the National Safety Council. An estimated 300 children drown in pools annually and more than 3,000 require treatment in hospital emergency rooms after being submerged in a swimming pool.

Children under five drown most frequently in residential pools and bath tubs. A small child or infant can drown in less than an inch of water. Alert and attentive is the only way guardians can actually prevent a drowning from taking place. Any lapse in supervision, even a short one, is sufficient time for a child to drown.

In an effort to reduce these tragedies the U.S. Consumer Product Safety Commission has designated child drownings as a priority safety issue. To a large degree, the success of these efforts very much depends on a public commitment to be ever alert to these potential tragedies.

For further information contact: Edwin P. Palumbo, Executive Director, Rhode Island Consumers' Council, 365 Broadway, Providence, R.I. 02909 - Telephone 277-2764, or Barbara McEachern, Consumer Specialist, U.S. Consumer Product Safety Commission, 10 Causeway, Boston, Mass. 02222 - Telephone (617) 565-7730.

Announce your graduation, new job or promotion in the *Herald*. Black and white photos welcome.

1992 Senior Olympics At Brown

The 1992 Rhode Island Senior Olympics Track and Field Meet for masters athletes age 40 and older will be held on Sunday, June 28 (8:30 a.m. to 4 p.m.) at Brown University Stadium in Providence. Governor Bruce Sundlun will welcome the athletes to the 15th annual event which is sponsored by the state Department of Elderly Affairs (DEA) and Hospital Trust National Bank. Congressman Jack Reed will light the Olympic torch at the opening ceremonies.

Competition will be held in nine age groups (beginning with a 40- to 44-year-old category) for both men and women in eight track events, a 5K (3.1 mile) road race, and six field events. Track events include a 1500 meter walk; and 100, 200, 400, 800, 1500, and 3000 meter runs. For the first time in the Senior Olympics, a 1500-meter race walk will be conducted. Field competitions include the javelin, discus, long jump, high jump, shotput, and hammer throw. Last year's Senior Olympics featured the first hammer throw competition for women.

Medals will be awarded to the first, second, and third place finishers in each event for each age category. Winners (age 55 and older) will be eligi-

ble to compete in the 1993 National Senior Games scheduled for June 12 through 18 in Baton Rouge, Louisiana. The Rhode Island Senior Olympics Track and Field Meet is the only sanctioned event in New England where athletes can qualify for the National games.

The entry fee for the 1992 Rhode Island Senior Olympics will be \$5 before June 15 and \$8 after that date. Athletes may register for the Olympics on the day of the event. Each participant will receive a Senior Olympic T-shirt.

This year the Senior Olympics festival of events includes the Senior Tennis Tournament at the Tennis Club in Cranston on May 29 and 30. The annual Masters Swim Meet is planned for late June at the North Providence Natatorium as well as an over-55 softball tournament. A ten-pin bowling tournament at Lincoln Lanes is scheduled for September 12-26.

For event information, call Dolores Casey Bergeron at 277-2819.

East Side Neighborhood Meeting

Rita M. Williams, Councilwoman Ward 2 (Prov.) will be hosting a neighborhood meeting on Wednesday, July 1, at 7:30 p.m. at Hope High School Auditorium, 324 Hope Street, Providence.

Mayor Vincent A. Cianci, Jr. will be present to discuss various issues and answer questions. Also Colonel Bernard Gannon of the Providence Police Department, Nancy Derrig, Superintendent of the Parks Department, and Mr. B. James Suzman, Director of Department of Public Works, will be present.

Your attendance and input would be greatly appreciated.

Peat Marwick Publishes Investment In R.I.

The Tax Department of the Providence Office of KPMG Peat Marwick has published the second edition of *Investment in Rhode Island*, it was announced recently by David Casten, partner in charge of the firm's Rhode Island Tax Practice.

Investment in Rhode Island, a 29-page fact book detailing the state's social and economic climates, was presented to Joseph R. Paolino, Jr., director of the Rhode Island Department of Economic Development, today by Casten.

The book is a collaborative effort of Peat Marwick and the state Department of Economic Development and will be distributed to individuals and companies who are interested in expanding in or relocating to Rhode Island.

"*Investment in Rhode Island* also highlights certain factors that make Rhode Island a desirable investment location for private and public sector businesses," said Casten.

Other topics of interest addressed in the book include the state's transportation system, industrial parks, market location and individual and corporate taxation.

"The Department of Economic Development is certainly delighted that Peat Marwick chose to update and again publish *investment in Rhode Island*. This book serves as a terrific guide to those overseas or out-of-state companies that are contemplating investment in this state," said Joseph R. Paolino, Jr.

A limited number of *Investment in Rhode Island* copies are available through the Providence Office of KPMG Peat Marwick. Interested parties should contact Tracey Spooner at (401) 421-6600.

Mail gets to us faster if you use our post office box number.
P.O. Box 6063
Providence, R.I. 02940

Join thousands of readers who know what's going on in the Rhode Island Jewish Community...

Subscribe to the Rhode Island Jewish Herald

"IN TOUCH WITH THE JEWISH COMMUNITY"

TIMELY FEATURES, LOCAL & SOCIAL EVENTS, EDITORIALS, BUSINESS PROFILES, AND OUR "AROUND TOWN" SECTION HIGHLIGHT EVERY ISSUE!

Don't miss a single one!

Return the coupon below to subscribe. Just \$10 in Rhode Island (\$14 out of state) brings you 52 issues that will inform and entertain you.

Yes! Please begin my subscription for

\$10 per year (RI resident) \$14 per year (out of state)

Name _____
Address _____

Mail check to: Rhode Island Jewish Herald, P.O. Box 6063, Providence, RI 02940

JAMES R. MYERS, M.D.
AND

JOSEPH T. TARPEY, M.D.

ARE PLEASED TO ANNOUNCE
THE RELOCATION OF THEIR OFFICE TO
PULMONARY & INTERNAL
MEDICINE SPECIALISTS

450 VETERANS MEMORIAL PARKWAY
BUILDING NO. 6
EAST PROVIDENCE, RHODE ISLAND 02914
EFFECTIVE JUNE 29, 1992
(401) 435-5522

Some Green Thumbs Among Us



by Mike Fink
Herald Contributing Reporter

I dream of Eden. I would fly to the Indian Ocean, to Costa Rica, to the ends of the earth for a red bird in a green rain-forest. For my bar mitzvah a neighbor a street away had sent me a year's supply of *National Geographic*. They whetted my appetite for the glories of wild and tame gardens. In mid-June on the East Side, no need to fly afar, short stroll will get you your garden.

On errands at Temple Emanu-El and at the Jewish Community Center, I yank my jeep to a stop at the Sapolsky rose garden. I join the traffic jam at their yard fence. People get out to sniff and stare at the row of roses. One shrub could be called The Burning Bush. Its blossoms flame out in orange, red and yellow, like torches or havdalah candles. A neighboring yellow rose tree looks like a galaxy of suns. The Duchess of Windsor would have shrieked in envy at the cream perfection of a white mass of roses. The colors, from damask crimsons to dainty pinks, burst at you like a preview of fireworks. Behind the bushes you see fox-gloves, and rows of vegetables, a working farmland of beauty. Yet the master and mistress gardener find time to travel to all those exotic places. They spent their springtime in China, where roses were kept for the emperor's private pleasures.

Why is it, when I want some-

thing hemispheres far-off, I bump into that very thing right under my nose, like the secrets of Oz? I follow my feet a few steps down my street and knock at the doorway to my longtime neighbor Alfred Fain's brick patio. "Come on in, I'll turn off the hose," the retired businessman spoke cheerily.

"My garden started out as a victory vegetable patch. War broke out a year after I first moved in, around 1940. Afterwards I hired an architect to lay out this patio. I told him, I don't want lawn like everybody else. See what you can figure out. Well, he took the natural incline of the hill and made use of it. In those days you could afford to build a real stone wall. He piled up a rocky shelf. The evergreens have grown. They throw a giant shade over the nook. 'Sylvia, will you bring us some soda and sit with us?' Mrs. Fain belongs to a Japanese flower arranging club. I follow her through the sliding French, or maybe Japanese, windows. Sylvia Fain shows me her bonsai designs. She takes a sprig of azalea, a twig left over from Alfred's pruning, and sets it on a moss base, to make a poem for a parlor table. "The upper branch stands for sky. The little bog means earth itself. The flowers, between the two elements, they spell humankind."

We sit in the moist, rain-

forest bower on the shady, mossy brick patio, with our drinks. A brilliant red cardinal perched now on a fencepost, now among the foliage of a Korean dogwood. "They come for the berries inside the white blooms," Alfred tells us. "Squirrels will strip and fling away my tulips to get the nuts inside. I set have-a-heart traps and get half a dozen every spring. By now word's out among the rodents to leave the Fains alone." The bank of irises and other flowers along the driveway stands untroubled. A neighbor next door up the hill mixed his bank with the Fain's. They stop traffic with their border display.

"With your bouquets, Sylvia, and with your potted plants, Al, do you like doing the work, or looking at it for pleasure afterwards?" They agree, "Both. But you'd be surprised," they go on. "Some people don't notice anything. They have no eye for beauty."

The Fains are glad to share their secret garden. They threw a reception for Scott Wolf a few seasons back. "I've stayed too long. I know you're busy." "No, please, come anytime, and bring your family," says



Gentleman Farmer Sapolsky

lovely Sylvia in her jeans and blouse. A retired guidance counselor, she keeps that gentle air of genuine listening and caring. Every garden whispers

a message and carries a mild meaning. I crunch the pearl grey gravel under my feet as I move toward the doorway. "I (continued on page 15)

JOIN US FOR AN
OLD FASHIONED

BBQ

And Arts & Crafts Show
At Pocasset Lodge.

DATE: Sunday, June 28, 1992

TIME: 12:00 p.m. - 4:00 p.m.

COST: \$5 per person

PLACE: Pocasset Lodge

Retirement Residence

12 Old Pocasset Lane

(401) 421-6610

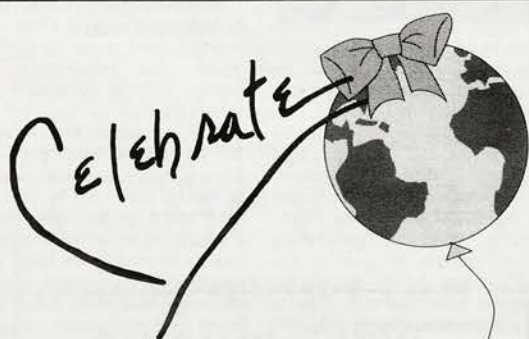
benefit The Rhode Island
Committee for Prevention of
Child Abuse.

Call 421-6610 today for
more information. Then head
on out to Pocasset Lodge for
an old fashioned barbecue
with all the fixin's.

Seniors, their families and
friends are invited to an old
fashioned barbecue on June
28! We will have an Arts &
Crafts show on-site for you to
browse through while you
enjoy all the great summer
food. All proceeds will



Pocasset Lodge
Gracious Retirement Living



WITH A VERY SPECIAL PARTY

Storytelling... myths and legends about our ancestors
Tee-Shirt Painting • Theater Games • Dance
Bannermaking • Puppet Shows/Magicians
...and much more!

TREATS AND FOODS THAT ARE
GOOD FOR YOU AND FUN

Introducing... "In Your Name"

A gift or donation will be given to a needy
child or charitable organization of your choice.

For further information please call

(401) 621-7225

IN MASSACHUSETTS: 1-800-824-7225

OPINIONS

Is It A Bird Or Is It Absurd?

by Helga Abraham

(WZPS) Question: How do Israelis solve their personal problems... taxes, pensions, mortgages...? Answer: They run for Knesset.

Far from being put off by new legislation aimed at curbing the number of factions in the Knesset (20, five of which are one-man parties), Israelis have entered into election battle this year with even more than their customary optimism, individuality and imagination.

While in 1988 just 51 groups requested electoral registration forms, this year's elections attracted over 70 groups of candidates... ideologies, constituent parties, protest groups and one-man bandwagons, all eager to have a say in the running of their country, all convinced they have found the solution to the country's ills. Known and unknown personalities announced they were

forming their own lists. Emisaries from the major parties were sent out to woo candidates and fringe groups... and everyone lobbied furiously for the 260,000 new immigrant vote.

Not for nothing did MK Uriel Lynn lament, "Ours is a multi-party parliamentary system at its extreme." Although Lynn succeeded earlier this year in raising the election threshold from 1% to 1.5%, making it necessary for a party to collect a minimum of 40,000 votes for a seat in the Knesset, it is still a relatively easy affair to run for parliament. All a new candidate needs is a \$10,000 deposit, 1,500 signatures, plenty of time and lots of energy.

Make Me a Match

With last minute hitches disqualifying Gershon Solomon's "Temple Mount Faithful" and

Kochavi Shemesh's "Stop Aliya" list, the final line-up for the June 23 elections consisted of 30 different factions, offering just about something for everyone. In all-night meetings until the last moment, interested groups were attempting to pool their resources, mostly to no avail. The new "Women's Party" attempted to court the "Victims of Mortgages," who plainly were not to be wooed; "We're not opposed to going with women," the homeowners declared, "but not in politics!" So both groups went it alone.

Rejected by the same women's list, Abba Gefen's pensioners party successfully merged with a new immigrant pensioners list to form the "Hand in Hand," Pensioners and Immigrants Party. "Of course we would have preferred to unite with 'DA' (the new Russian immigrant party headed by immigrant and former refusenik Yuli Kosharovsky), but they couldn't be persuaded," said a regretful Gefen.

After announcing plans to set up his own political party, former refusenik Natan Sharansky - the one man whom most observers agreed could have united such splinter

groups - withdrew his candidacy. "Three weeks was not enough to put a list together," he said, adding that he "didn't want to become another Democratic Movement for Change," like "DA."

A group of influential Israelis formed "Mahapeha" (Revolution) whose aim in running for Knesset is to protest against theft, corruption and waste in government institutions. "Israel is too small a country to afford so much waste," said Shlomo Cohen Tsiddon, the group's lawyer.

The ultra-orthodox community appears particularly well served with five different parties to choose from: "Shas," "Geulat Yisrael," the joint list of "Aguda," "Degel Hatorah" and Yitzhak Peretz's "Moriah" party, Moshe Levinger's "Tora Ve'erezt Yisrael" list and "Medinat Hayehudim" - a fringe group whose first two candidates are Robert and Rachel Manning, currently awaiting extradition to the U.S. on murder charges. Where the leftwing parties of "Shinui," "Mapam" and the "Civil Rights Movement" succeeded in uniting under one banner - "Meretz" - the extreme rightwing split in two, with the original "Kach" party competing

with the "Kahane Lives" list headed by Binyamin Ze'ev Kahane who, to confuse matters, is the son of Meir Kahane, founder of the "Kach" party.

New constituent parties eager to introduce accountability into the Israeli parliamentary system include "Tali" - the Israeli Renaissance Movement led by veteran Russian educator Robert Golan and Professor Yehuda Kider, head of the Institute of Advanced Studies in Arad and former chief scientist of the Apollo Space Mission; and the "Women's Party" led by longtime activist Ruth Reznick.

"Law of Nature" for Knesset

Original one-issue parties this year include Herzl Haham's "On Wheels" taxi drivers' list whose leader maintains that only separate representation in the Knesset can ensure that their cause, in the name of tens of thousands, receives due attention.

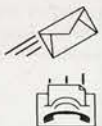
New one-man parties vying for the 13th Knesset are Avraham Badango's "Kingdom of Israel" list, dedicated to the rebuilding of the Temple in order to promote peace between Arabs and Jews; Amihai Rokah's "Law of Nature" list

(continued on next page)

Rhode Island Jewish Herald

SUBMISSIONS POLICY

The Rhode Island Jewish Herald welcomes any written submissions from its readers on Jewish concerns. Articles must be typed and double-spaced. Please include a daytime telephone number. Anything longer than 500 words may be edited for space restrictions.



Send to:
Letters to the Editor, RI Jewish Herald
P.O. Box 6063, Providence, RI 02940

Or fax to: 401/726-5820.

RHODE ISLAND JEWISH HERALD

(USPS 464-760)
Published Every Week By The
Jewish Press Publishing Company

CO-EDITOR:
KATHY COHEN
CO-EDITOR:
KAMMIE KETTELLE
CONTRIBUTING REPORTER:
MICHAEL FINK
COLUMNIST:
DOROTHEA SNYDER
ACCOUNT REPS:
JEANNETTE HIDALGO
MYRNA H. DRESS
GREG MURPHY
GRAPHICS: JOHANNA BULICH
MAILING ADDRESS:
Box 6063, Providence, RI 02940
TELEPHONE: (401) 724-0200
PLANT:
Herald Way, off Webster Street
Pawtucket, RI 02861
OFFICE:
1175 Warren Avenue
East Providence, RI 02914

Second class postage paid at Providence, Rhode Island. Postmaster, send address changes to the R.I. Jewish Herald, P.O. Box 6063, Providence, RI 02940-6063.

Subscription Rates: Thirty-five cents per copy. By mail \$10.00 per annum, outside RI and southeastern Mass. \$14.00 per annum. Bulk rates on request. The Herald assumes subscriptions are continuous unless notified to the contrary in writing.

The Herald assumes no financial responsibility for typographical errors in advertisements, but will reprint that part of the advertisement in which the typographical error occurs. Advertisers will please notify the management immediately of any error which may occur.

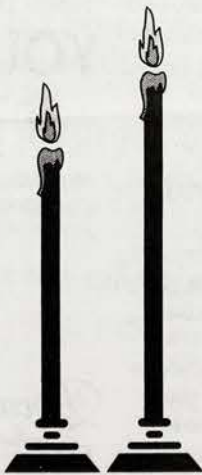
Unsolicited manuscripts: Unsolicited manuscripts are welcome. We do not pay for copy printed. All manuscripts must be typed, double-spaced. Enclose a stamped, self-addressed envelope if you want the manuscript returned. Letters to the editor represent the opinions of the writers, not the editors, and should include the letter writer's telephone number for verification.

The Herald is a member of the New England Press Association and a subscriber to the Jewish Telegraphic Agency.



Candlelighting

June 26
8:06 p.m.



Notice: The opinions presented on this page do not necessarily represent the opinions of this establishment.

The Value Of Foreign Aid

by Harold Silverman,
President

Congregation Sons Of Jacob

1. Foreign aid contributes to the stabilization of regional military balances, preventing wars into which America could be drawn.

2. Foreign aid provides a lever to help resolve regional conflicts, preventing wars. Several regional disputes are more amenable to solution today than before, because Soviet-sponsored radicalism is no longer a factor.

3. Foreign aid can help stabilize the former Soviet Union and prevent a counter revolution that could endanger world peace. We can get more "bang for the buck" by giving aid to the former Soviet republics than by buying arms to deter them!

4. Foreign aid is necessary to meet pressing humanitarian needs in Africa, Asia, and elsewhere. We failed to rescue Jewish children in the thirties; will we fail to rescue them today?

5. Overall, because of the Soviet collapse, foreign aid dollars "buy" more today than they did before; they are at this moment a particular good investment, and it is not a time to cut back.

6. Military assistance

Presidential Notes

creates jobs in the U.S. because almost all military aid is, by law, spent to make purchases from firms in the U.S.

7. Economic aid creates jobs in the U.S. by expanding markets abroad, because, when development assistance is successful, it has the multiplying effect of generating many dollars in growth for each dollar in aid, leading to imports from the U.S. This is one way of making the "buck" do the work of "four."

8. We are, gratefully, moving from an era of confronta-

tion to an era of diplomacy. The tool of confrontation is weapons; the tool of diplomacy is foreign aid.

9. Democratization and economic reforms in previously unfriendly countries can be advanced with U.S. assistance.

10. Providing aid reinforces the U.S. commitment to friends, which gives allies reassurance and adversaries reason to "pause." Look at the Peace Corps!!

At a time when isolationism is fashionable, it is more important than ever to understand the importance of foreign aid to American interests.

It is no secret that foreign aid has never been popular. Loan guarantees aside, it will be harder than ever in 1992 to support foreign aid. It will take a concerted effort by the pro-Israel community to keep the program at its current levels. We urge everyone who believes in this to make yourself known by calling or writing to our congressional representatives!!

Fifty Years Ago This Week In The Jewish Herald

The New Order

For sheer unnecessary cruelty, the Axis leaders can bear comparison with the blood-loving conquerors of antiquity. Additional evidence has been produced to completely substantiate Anthony Eden's almost unbelievable report of what the Japs did in Hong Kong. Wanton murder, torture, and rape are apparently a definite part of Japanese policy.

JUNE 26, 1942

Kosher Food Available In Army

NEW YORK — Jews in the armed services who wish to observe the dietary laws may obtain certain kosher non-perishable foods at Post Exchanges, as a result of the activity of the Army and Navy Service Department of the Jewish Welfare Board.

Scene Around Town

Families residing at Barrington Beach are cooperating with the government by pooling their cars for traveling to and from Providence. The beach always has a sizable contingent from this city and the co-operation of the vacationers will make the gas rationing stretch through the summer months without undue hardship.



In Support Of The R.I. Holocaust Museum

by
Ray Eichenbaum
Special to the Herald

The other day I attended and participated in a reception for the friends of the R.I. Holocaust Memorial Museum. It all went very well, and praise should be given to the women and men of the reception committee who worked very hard to make the affair so successful.

I usually do not "push" any views of any organization on anybody, nor advocate the giving of support to any and all institutions; however, in the case of the Holocaust Museum I have to make an exception. This little locale on Elm Grove Ave. in Providence represents the facts and ideas that make all of my writings legitimate. When one has survived an ordeal such as the Holocaust, he automatically became a member of a grouping of people who are bound to a common cause for the duration of their lives. This cause is the perpetuation of the memory of the victims of this catastrophe for something good and worthwhile.

Therefore, in view of the great danger that the Revisionists, who would like to blot out the great lesson which humanity can learn from this experience, pose to the truthful representation of proven, historical

A Bird

(continued from previous page)
(aim unclear); and Yasur Zion's "Tzipor" (bird) list which, says the birdseed dealer from Moshav Tarom, represents moshavim, kibbutzim and underprivileged workers. Zion, in addition, is campaigning to make April 2 National Truth Day... a day when everyone, including politicians, will be obliged to tell the truth and

facts pertaining to this great human tragedy at this time and into the future, I urge all good people to become friends of the Rhode Island Holocaust Memorial Museum. Any monetary donation, no matter how large or small will do. The numerical strength of the number of people who support the Museum and form a united front against the ugly slanderers of historical truths is of greater importance here. This kind of number will prove to the Revisionists, once for all, that their vicious lies will not stand — now or ever.

Also by presenting such a united front against Revisionism we shall set an example for our children, and our children's children, because they will, for sure, have to fight their own battles against unscrupulous "deniers" of the Holocaust during their lifespans as well.

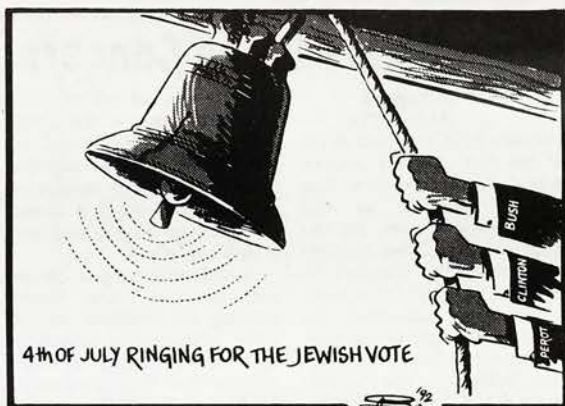
When we consider the worthwhile influence which the Museum contributes to the local scene as well, this makes the case for the support of this institution even stronger. Just think — most of the 8th graders in our state, when they study history in school, pass through the portals of the Museum and are gmorial Museum. Any

nothing but the truth.

Having found the best slogan of all... 'I'm Not a Dove, I'm Not a Hawk, I'm Just a Bird,' Zion disappointed potential voters by admitting his foray into politics was no more than a publicity gimmick aimed at garnering cheap advertising for his products. His candidness, however, would seem to confirm his claim that if elected "Tzipor" may become the country's only "honest" politician.

donation, no matter how large or small will do. The numerical strength of the number of people who support the Museum and form a united front against the ugly slanderers of history who attend my infrequent presentations, there is hardly any person who is not deeply touched and affected by the experience. And we think that this is what it's all about! A child or a grown person who has been through such a visit will probably grow up to be a better person overall and less of a bigot and anti-Semite for sure. And if we can win a few of these kinds of battles on the local scene... that is what makes the Rhode Island Holocaust Memorial Museum so valuable right now and into the future.

The Museum is also a terrific resource center for our own Jewish people as well. Now, more than ever, we Jews need an identity object, a common cause, a rallying point. We are



4th OF JULY RINGING FOR THE JEWISH VOTE

thankful for the state of Israel and pray for its well-being, but remembering the Holocaust should also be a unifying force for us, since it reminds us how vulnerable a Jew's existence in our world can be.

If you want to join us in our fight against anti-Semitism and bigotry right here in our little

state which we love and call our home, do become a friend of the Rhode Island Holocaust Memorial Museum. Please do!

The writer is a Holocaust survivor living in Providence. As a member of the Holocaust Survivors of Rhode Island, Ray frequently lectures on his days in captivity.

Torah Is Deed

The Torah portion, *Sh'lach*, recounts the story of the spies sent by Moses to investigate Canaan prior to its Divinely ordained conquest. Though each spy was personally chosen by Moses and quite familiar with G-d's promise, 10 of the 12 told the people the land was unconquerable. Their fear of the Canaanites was so profound they said: "The inhabitants are stronger than Him" — even G-d could not conquer them!

How could the spies make such a statement? These were men of faith and understanding, righteous and wise men.

Consider, for a moment, becoming lost. One doesn't suddenly find oneself in the dark forest. Instead, one deviates from the highway a step at a time. Gradually, imperceptibly, one strays farther from the road until one ends up lost. This is what happened to the spies: they started out as wise and righteous princes, who knew

the will and power of G-d, and they ended as "rebels."

What was the original step — the original hair-breadth of their error?

According to Rabbi Shneur Zalman, founder of *Chabad*, their first imperceptible error consisted of an unwillingness to become involved in the mundane world. In the desert,



they "had it made." Miracles fed them, gave them water, provided them with clothing, and hid them from their enemies. But once in Canaan, their very first task would be to wage war — an effort which wasted time and energy — even if G-d miraculously prevented casualties. This time and effort could better be devoted to the study of Torah.

Moreover, once the war was

won, they would be required to plow and sow and tend vineyards. The spies hesitated to leave the desert and enter the material world. In the desert they could devote all of their time and energy to Torah.

By distinction, Moses (who reflected Divine Will) insisted that the Jews leave the desert and settle in the land of Israel. The ultimate aim and fulfillment of Torah is deed! The culmination of Torah is its actualization and implementation in the real world. It is not sufficient to become involved in Torah theory.

This minor error of the spies — divorcing theory from practice and the spiritual from the material, was their first wrong step; other steps followed until their reasoning became so perverted that they came to make the absurd statement that "The inhabitants are stronger than Him."

(From A Thought for the Week, Detroit. Adapted from the works of the Lubavitcher Rebbe.)

COME EARLY!

PACK YOUR COOLER FOR THE BEACH!

New Summer Hours:
Monday-Friday 6:30 am - 5:30 pm
Saturday & Sunday 7 am - 1:30 pm



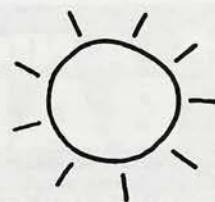
BAGEL COMPANY

Featuring OvenFresh New York-Style Bagels, Assorted Cream Cheeses, and a full line of Bagel Sandwiches.

675 Oaklawn Avenue, Cranston, RI • (401) 944-7750

SPRING • SUMMER CLEARANCE

* 30 % TO 50% OFF



YOU CAN TAKE IT WITH YOU



YOU ARE HERE

Pack up the wagon and head for the beach with savings on all the fun clothes for summer

SALE BEGINS JUNE 25TH

Gabrielle

fine clothing and accessories
467 Angell Street, Wayland Sq.
Providence, Rhode Island 02906

* Gabrielle's Gifts 20% Off

Six reasons why there's never been a better time to bank at Fleet.

<p>3.75% Money Market Savings Account</p> <p>Open a Fleet Money Market Savings Account with \$1,000 or more of your funds not on deposit at Fleet and earn a guaranteed 3.75% rate through July 31, 1992. Offer expires July 31, 1992.</p>  <p>We're here to make a difference.</p> <p><small>Standard Fleet withdrawal and minimum balance requirements apply. After July 31, 1992, rates may change at our discretion. Personal accounts only. Member FDIC.</small></p>	<p>91-Day CD—½% Bonus</p> <p>4.00%⁽¹⁾ Interest Rate 4.08%⁽²⁾ Effective Annual Yield</p> <p>Earn an extra ½ percent interest over our current rate when you open your 91-day CD with \$1,000 of funds not on deposit at Fleet.</p>  <p>We're here to make a difference.</p> <p><small>Stated rate includes bonus. Offer expires July 31, 1992. Substantial penalty for early withdrawal. Compounded daily. Maximum deposit \$100,000. Not available for IRAs. Rate subject to change. Personal accounts only. Member FDIC.</small></p>	<p>Added Interest CD</p> <p>5.00%⁽¹⁾ Interest Rate 5.13%⁽²⁾ Effective Annual Yield</p> <p>Open our 18-month Added Interest CD and if our rates rise you can increase your rate once during the first 6 months. CD must be opened with \$1,000 of funds not on deposit at Fleet.</p>  <p>We're here to make a difference.</p> <p><small>Added Interest CD will automatically renew at maturity into a 12-month CD at Fleet's then current rate unless you give us other instructions. Customer must request rate increase within the first 6 months of Added Interest CD. Compounded daily. Maximum deposit \$100,000. Available for IRAs. Substantial penalty for early withdrawal. Rate subject to change. Offer expires July 31, 1992. Personal accounts only. Member FDIC.</small></p>
<p>No-Fee Checking For One Year</p> <p>Open a CD, Savings or Money Market Account with \$1,000 or more in new funds not on deposit at Fleet and get:</p> <ul style="list-style-type: none"> • Fleet One® checking with no monthly service charges for one year • A Fleet24 SELECT® ATM card with no monthly fee.  <p>We're here to make a difference.</p> <p><small>Standard Fleet deposit rules apply. Offer expires July 31, 1992. Personal accounts only. Member FDIC.</small></p>	<p>No-Annual Fee Credit Card For One Year</p> <p>Get a Fleet VISA® with no-annual fee for one year, if you qualify, when you open a Fleet CD, Money Market or Savings Account with \$1,000 or more of funds not on deposit at Fleet.</p>  <p>We're here to make a difference.</p> <p><small>Standard Fleet deposit rules apply. Offer expires July 31, 1992. Personal accounts only. Valid for new cards only. Member FDIC.</small></p>	<p>Free Information On Stocks, Bonds And Mutual Funds</p> <p>Fleet makes stocks, bonds and mutual funds available to you through our branches. For free information and education on these investment alternatives, or to find out about FDIC insured deposit accounts, call your local Fleet Bank and make an appointment to meet with one of our investment specialists.</p>  <p>We're here to make a difference.</p>

If you're looking for a better banking value—whether for a checking or money market account, credit card, CD, or other investment alternative—there's never been a better time to call Fleet. Because right now you can sign up for some of our best banking products at special savings.

Opening an account is easy, too. For more information, just call 1-800-325-5576.

You can also apply for a loan by phone. Or stop by any of the Fleet Bank offices listed below. We're even offering extended banking hours to make opening your account more convenient.

So make the most of your money. Make your move to Fleet.

For more information call
1-800-325-5576

Extended Banking Hours at Selected Branches

Saturday, June 27, 9:00 AM–5:00 PM
Sunday, June 28, 12:00 PM–5:00 PM
Monday, June 29 and Tuesday, June 30, 4:00 PM–8:00 PM
Wednesday, July 1 and Thursday, July 2, 4:00 PM–8:00 PM

Branches

Cranston
*201 Hillside Road
Garden City

*196 Atwood Avenue

Cumberland
1850 Mendon Road
Country Crest Plaza

East Greenwich
200 Main Street

Jamestown
29 Narragansett Avenue

Johnston
*1491 Atwood Avenue

Narragansett
Pier Marketplace

North Kingstown
6851 Post Road

North Providence
*2073 Smith Street
Centredale

Scituate
*135 Danielson Pike

Slatersville
9 Main Street

Wakefield
4 Old Tower Hill Road

Warwick
*3033 Post Road
Apponaug

*50 West Shore Road
Hoxsie

West Warwick
5 Washington Street
Arctic

Wickford
30 Phillips Street

Woonsocket
1950 Diamond Hill Road
Woonsocket Plaza

10 Monument Square



We're here to make a difference.™



AROUND TOWN

Story and photos by Dorothea Snyder

"Human support is the League's priority," said Marilyn Ravech and Susan Stern. "We want to ease the pressures for Children's Hospital patients and their families by making them comfortable, and their stay in the hospital more personable."

Marilyn and Susan co-chaired a gala cocktail party and fashion show on June 18th at the Wang Center to raise money for human services at Children's Hospital in Boston.

Each winter the Children's Hospital League holds a major winter fund-raiser. Last Thursday night introduced the League's newest tradition, a summer gala fund-raiser.

Escada, world-renowned fashion leader, honored the League by hosting the benefit, which previewed the Fall 1992 Escada and Laurel collections.

While the White Heat Swing Orchestra played on, the Gala's co-chairs listed a few of the many programs funded by human services: a summer camp, audio-visual aids, including an art cart, a nintendo cart and videos. Children unable to view live entertainment programs watch on close-captioned television.

Marilyn and Susan praised Escada and Laurel for their "wonderful support." In between kudos from appreciative well-wishers at the Gala, they expressed how "It's been a wonderful marriage of two organizations."

"We all feel very good about it. Above all, the money goes to such a worthwhile cause - the children!"

(To be notified of further events, contact the public relations office at Children's Hospital.)

A Worthwhile Cause - The Children



Marilyn Ravech and Susan Stern, co-chairs, Escada Benefit for The Children's Hospital League; and Susan Mann Fink, committee member, formerly of Providence.

ESCADA MARGARETHA LEY *Presents*



Left and right: Leopard intarsia tunic with slim knit skirt. Center: Leopard intarsia cinch waist cardigan, turtleneck tunic, slim knit skirt, and floppy animal beret.



Double-breasted boucle, pink velvet trim jacket, high waist velvet skirt.



Large houndstooth turtleneck tunic and knit skirt.



Swirl detail turtleneck tunic, knit leggings, color block cape.



Yellow wool crepe suit.



Left: Checker yellow swirl tunic with black knit leggings; cycle detail turtleneck tunic with black knit leggings; checker red swirl tunic and black knit skirt.

Shown are fashions from the Fall 1992 Escada Margaretha Ley Collection.

ARTS AND ENTERTAINMENT

Your Choice Of Middle Eastern Food

by Kammie Kettelle
Herald Associate Editor

I knew I was about to have an excellent lunch when I placed my order at **Hot Pockets** on Thayer Street. The long line of people eagerly waiting for their food was indeed a tell-tale sign of what was ahead.

Hot Pockets is a fast-food style restaurant which serves a wide sampling of Middle Eastern food, so I had quite a time making up my mind. Owner Philippe Maatouk, a native of Lebanon, suggested that I have a falafel, and prepared it for me at the salad bar as I watched.

The main ingredient in a falafel is chick-peas along with Mediterranean spices. Then, if you decide to eat it the traditional way, lettuce, tomato and tahina dressing are all added together in a pita. Maatouk, who was previously in the restaurant business for 15 years in Lebanon and attended a culinary arts school there, explained that many people choose to eat at his restaurant because it is a healthy alternative. Also, there are plenty of vegetarian items offered.

When my order was ready, I opted to eat inside at one of the tables so I could observe the atmosphere, but seating was also available outside. I could hardly put down this wonderful creation to take notes! Now I knew why so many people were here for lunch. Maatouk had told me that his falafels were the best in the country



Philippe Maatouk busy at work in his East Side eatery.

and I was beginning to believe this was true.

However, there are many other interesting options on the menu. For example, you could choose *kibbee*, which is very popular in the Middle East and is made from lamb, beef, spices and pignolia nuts; *babaganouj*, which is a type of roasted eggplant; or *shauerma*, which is lamb marinated in wine. These are only a few of the choices available.

(continued on page 15)

Maatouk said he receives much self-satisfaction from his restaurant business. In fact, he was waiting on customers the whole time we talked.

"This is my life," he added. *Hot Pockets* is located at 285 Thayer Street in Providence, and is open from 11 a.m.-2 a.m. every day of the week. Catering is available and they will gladly assist in planning your next function. For more information call (401) 751-3251.



ARTS & ENTERTAINMENT BRIEFS

Classic movie musicals will light up the magnificent 58' x 21' screen at the Providence Performing Arts Center again this summer, beginning on Wednesday, July 1 and continuing every Wednesday through August 12. There will be two showings of every movie: at noon and 6 p.m. Tickets are \$3.50 for all shows and may be purchased in advance at The Providence Performing Arts Center Box Office by calling (401) 421-ARTS or at the door; seating is general admission. "Funny Girl" (1968), starring Barbara Streisand and Omar Sharif, will be shown on Wednesday, July 1, 1992. The running time of this movie is 2hrs., 49 min.

"Freedom Of Expression" will be on exhibit at The Bristol Art Museum from June 27 through July 12. This all-media exhibit, juried by Bristol sculptor John Udvardy, will display the works of regional artists. The museum will be open after the Fourth of July parade. Hours are from 1:00 through 5:00 Tuesday through Sunday. Admission is \$2.00 but free to children and students. You can find the museum in downtown Bristol on the grounds of Linden Place at Hope and Wardell Streets.

Victor Borge, the celebrated comedian-pianist brings his unique blend of humor and music to the Great Woods Center for the Performing Arts on Sunday, July 12, at 8:00 p.m. Appearing with the Great Woods Festival Orchestra, Mr. Borge will perform his one-man show, "An Evening Of Music and Mirth." The concert is part of the 1992 Fleet Summer Series, a summer-long festival of fine arts performances.

The Langston Hughes Center for the Arts will hold an Art For Kid's Sake Summer Camp. You can dance, act, sing, draw and write. Don't miss this great opportunity to discover yourself in the arts! This summer arts camp will be held at Trinity Repertory Conservatory, and it begins on July 6 and ends on August 14. Classes will be held on Monday through Thursday from 9:00 a.m.-3:00 p.m. Tuition is \$300, and some scholarships are available. Space is limited, so call 454-5422 for more information.

THE MEADOWBROOK ... CINEMA ...

2452 Warwick Avenue, Warwick
ACROSS FROM SUPER STOP & SHOP
Sat. & Sun. Matinees, **ONLY \$1.00**
Mon. & Tues.
Evening Shows

NOW SHOWING MATINEES AND EVENINGS: *The Babe*, *Wayne's World*, *Fried Green Tomatoes*, *White Men Can't Jump*
ROCKY HORROR PICTURE SHOW
Fridays & Saturdays at Midnight

Call 738-2471 for times & listings

DINING GUIDE

HOT POCKETS

751-3251 207 THAYER ST. PROVIDENCE, RI

Featuring: FALAFEL

Chicken Kabob • Kefta Kabob • Chicken Borday • Shish Kabob
PLUS A FULL LINE OF VEGETARIAN POCKETS! Combo Plates... You Name It!

SPECIAL: Pick Any Pocket... 75¢ OFF

COUPON AD MUST BE PRESENTED
OPEN: MONDAY-WEDNESDAY 11-1 AM • THURSDAY-SUNDAY 11-2 AM

LITTLE CONNIE'S

7 am - 9 pm
Monday-Friday
7:30 am - 9 pm
Saturday & Sunday

LO-CAL, LO-FAT,
HI-TASTE FROZEN YOGURT
DRINKS & DESSERTS

107-1/2 Hope Street, Providence • 351-1554

Emerald Inn

Restaurant

Szechuan, Mandarin & Hunan Cuisine
Exotic Drinks

湘苑

1275 Fall River Ave. ~ Route 6 ~ Seekonk
(508) 336-8116 ~ (508) 336-8351

2 minutes from Showcase Cinemas ~ located between Pier 1 and Herman's

EXTRA SENSORY

Natural Cuisine

388 Wickenden Street (Corner of Hope St.), Providence
454-3920

Specializing in delicious, creatively prepared low-fat cuisine.

We offer an extraordinary selection of foods for all your dietary needs and culinary longings.

Try out hearth-baked naturally leavened breads!

Hours: Monday-Thursday 8am-9pm • Friday & Saturday 8am-10pm

EMPRESS OF HUNAN

華

The Finest Authentic Hunan and Szechuan Cuisine

20% OFF

SELECTED ITEMS

NOW AVAILABLE
DINNER COMBINATIONS
(Not available Friday & Saturday after 5:30 pm)

80 Lambert Lind Highway, Rte. 5,
Warwick (Clocktower Square)
738-8280

Visa • American Express • MasterCard

Eggs Served Any Way You Like Them.

Open Early, 7:30 a.m.
Saturday & Sunday at 8:30 a.m.
Smoke-Free Dining Room

rue de l'espoir

Creative Cooking • Fun French Food • 99 Hope St., Prov. 751-8890

MILESTONES

Weisses Announce Engagement

Mr. and Mrs. Frank J. Weiss of Barrington, R.I., announce the engagement of their daughter, Miss Aleen L. Weiss of North Providence to Mr. Jonathan B. Weiss of North Providence. Mr. Weiss is the son of Mr. and Mrs. Howard S. Weiss of Providence.

Miss Weiss graduated from the University of Kansas. Mr. Weiss graduated from Georgetown University and George Washington University.

The wedding date has been set for May 1, 1993.

Gittleman Honored By Governor Sundlun



Governor Bruce Sundlun presents Rachel C. Gittleman of East Greenwich with a certificate of achievement in recognition of her being crowned Miss Rhode Island National Teen-Ager 1992 in a recent statewide pageant. Rachel will represent Rhode Island in the national pageant to be held August 9-15 in Nashville, Tennessee. Pictured with Rachel are her sister, Danielle, and her parents, Allan and Ellen.



Left to right: Jonah, Lauren and Julie Half.

Gershman Family Receives Honors

Mr. and Mrs. Ed Gershman of Pawtucket, R.I., have returned from a vacation where their three grandchildren (proud parents are Fred and Cheryl Half of Palo Alto, Calif.) were all graduating with high honors from their respective schools.

Lauren Half, graduating high school, received high academic awards for 3.5 or better cumulative average and the Music Award for her participation as soloist in the school choir.

Her brother, Jonah, completed middle school with an exceptional record of eleven high awards, including academic awards for four semesters with cumulative average of 4.0; the U.S. Presi-

dent's Award of Commendation for Outstanding Academic Achievement; the coveted Stanford Silver Cup Award for Outstanding Student; and a cash award for his track and field team activities.

In youngest granddaughter Julie's exercises from elementary school, she was honored for her work as a tutor; for her accomplishments by the Farm Council and as a library helper.

They are also the paternal grandchildren of Madeline Half of Pittsburgh, PA, and the late Irving Half.

Congratulations to the three Halfs for their remarkable achievements, and to the proud parents and grandparents.

Stein Receives Degree

Anita and Sam Stein of Sessions St., Providence, are proud to announce that their daughter, Donna Stein Robinson, received her Doctor of Philosophy degree in May from the School of Education at Boston College. Mrs. Robinson resides in Keene, N.H., with her husband and two sons and is a guidance counselor.

SUN RAY CURTAIN CO.

Complete Custom Decorating Service
Best Prices & Free Estimates
Alan Kaplan: 463-7273 • 846-7272

RITUAL CIRCUMCISION

BY
CERTIFIED MOHEL
RABBI
SIMON MIARA
(617) 277-2249

Designer's Touch

Quality Resale
Fashions For Less
1387 Park Avenue, Cranston
942-8465
Tuesday-Thursday 6 pm - 9:30 pm
Saturday 10 am - 6 pm

Miller-Schachter

The engagement of Pamela L. Miller of Bozrah, Conn., and Jonathan Schachter of Norwich, Conn., is announced by their parents, Melvin and Harriet Miller of Waterford, Conn., and Morris and Susan Schachter of Norwich, Conn.

Ms. Miller is the granddaughter of Hyman Grossberg and the late Doris Greenberg of Providence and Nathan Miller and the late Esther Miller of Providence.

Ms. Miller attended Waterford schools and graduated Summa Cum Laude from the University of Connecticut. She will receive her master's degree from Southern Connecticut College in August. She is employed as an elementary teacher by Norwich, Conn., Public Schools.

Mr. Schachter attended Norwich, Conn., schools and Moshagan Community College in Norwich, Conn. He is a buyer for Consumer Interstate Corporation in Norwich, Conn.

A November 1992 wedding is planned.



(508) 532-6068

Cantor Sam Pessaroff

Certified Mohel

Trained at Bikur Cholim Hospital, Jerusalem

Extended Sidewalk Sale

Prices Inside Store

4th of July

Decorations ★ Plates ★ Cups
Napkins ★ Tablecovers ★ Etc.

ALL AT DISCOUNT PRICES

The "Only" Party Warehouse

310 East Avenue, Pawtucket • 726-2491



Jeanne Stein



HOURS: Monday-Thursday 9:30-6, Friday 9:30-7, Saturday 9:30-5

HOPE TRAVEL INC.

32 Goff Avenue, Pawtucket, RI 02860

Inside RI: 1-401-728-3600
Nationwide: 1-800-367-0013
FAX: 1-401-724-8076

FOR FLIGHTS, CRUISES or TOURS
FOR BUSINESS or PLEASURE
FOR ALL YOUR TRAVEL NEEDS



NURSING PLACEMENT HOME CARE INC.

"Homecare You Can Rely On"
Serving Massachusetts and Rhode Island
Providing Quality Healthcare for 15 years



Providence (401) 453-4474 North Kingstown (401) 885-6070 Brookline, MA (617) 738-5030

MEDICARE & MEDICAID
CERTIFIED AND LICENSED
SKILLED NURSING STAFF

CASE MANAGEMENT

- RN Assessments
- 24 Hour Supervision
- Registered Nurses
- Licensed Nursing Assistants
- Physical Therapy
- Occupational Therapy
- Speech Therapy
- IV Therapy
- Master Social Work
- Pediatrics

We can provide you with a comprehensive program to help you keep your loved ones at home.

Election Alert!

This is an election year alert from the Synagogue Council of America... Because close to 1,000,000 American Jews are not registered to vote... the council is conducting an aggressive Jewish voter registration campaign. For information... call toll free 1-800-927-7469. Repeat... 1-800-927-7469.

LOCAL NEWS

Katchor's Knip!



Mr. Knip comes to town.

by Mike Fink
Herald Contributing Reporter

"Knip means a little pinch of something. Or it refers to a housewife's nest egg. I'm not quite sure what the word conveys. Mostly, I just like the sound of it. That's why I named my character Mr. Knip."

Ben Katchor sketched his cartoon figure in Brooklyn, N.Y. Julius Knip lousy absurd errands among the back alleys of some metropolitan business district. "The English edition of the *Jewish Forward* wanted a Yiddish-type profile. Otherwise I might not have brought him to life." Ben carried Julius Knip to Providence, for the

Nice Paper, nearly a year ago. His adventures also appear here and there among other local papers. I tried to get the artist to tell me his work of art stood for his late dad, a former chicken farmer who moved from upstate into New York City to work in real estate. But Ben dismissed the idea out of hand. "No way. And the city Knip prowls isn't really Manhattan either. It's just a City. My strip isn't based on anyone or anyplace. It just came out of my own mind."

Ben also runs a graphics business. But Knip has taken over his life and career. He works at home and comes out at night among the Thayer Street cof-

feehouses, where I meet him at a corner table.

He remembers, "I used to play with little figures as a kid. I liked to draw but I wasn't a genius at it. My folks never saw my future as being a cartoonist." I told him, "I pore over every Calvin and Hobbes and every *Doonesbury* and *Rex Morgan*." "Not me," he counters. "The daily funnies just have gags. I learned from *Raw* artists." Ben has a poet's long, blown-back brown hair and brown eyes that look not so much at you, but at some inner dream. He has a way of slipping out of your down-to-earth questions. But he warms up to

Portuguese President Sends Gifts To Touro Synagogue

On Tuesday, June 23, two gifts from the President of Portugal will be presented to Touro Synagogue in Newport by Nuno, the Count of Botelho. The eleven o'clock ceremony is being organized jointly by Touro's congregation, Jeshuat Israel, and the Touro National Heritage Trust — which works to focus attention on the early Jewish experience in our country.

The Honorable Mario Soares is sending these gifts in grati-

tude for hospitality he received at Touro Synagogue just three years ago — and in commemoration of the five hundredth anniversary of the Expulsion of all Jews from the Iberian Peninsula. During his 1989 visit, President Soares renounced his government's policies of five hundred years earlier, and at the same time apologized for the effect this had on many generations of their people. One of the gifts will be a framed copy of that historic speech.

Temple Shalom Shabbat

Rabbi Marc S. Jagolinzer, spiritual leader of Temple Shalom, the Conservative Congregation of Newport County, has written and will conduct a creative Sabbath worship service on Friday, June 26, at 8 p.m. in the Main Sanctuary. This special service of worship will incorporate the installation of officers of the Congregation for the 1992-93 year.

Those to be installed by Rabbi Jagolinzer include: President, Gerald W. Seigel; Vice Presidents, Michael S. Mendell, Professor Steven Ross; Treasurer, Stephen Schneller; Corresponding Secretary, Pat Grossman; Recording Secretary, Ruth Ziegler; Financial Secretary, Arlene Hicks; Trustees, Abraham I. Fischer, Brian Gillson, Dr. Jerrold Rosenberg, Lt. Cdr. James Gilmore and Eva Seigel.

On Oneg Shabbat will follow, graciously sponsored by Temple Shalom in honor of the newly installed officers and trustees.

Touro Synagogue was chosen as the site of the Portuguese President's speech because its congregation was founded by descendants of those who experienced the tragedy of 1492. This program will mark yet another milestone in the gradual rapprochement taking place between the Iberian governments and the world's Jewish population.

Touro Synagogue is located at 85 Touro Street, Newport, R.I. For more information, call (401) 847-0810.

Advertise in the *HERALD*.
Call 724-0200

LONDON ON SALE
\$599
plus \$30 airline tax
including flights from Boston via Virgin Atlantic, 6 nights hotel based on Dbl Occ.

WINKLEMAN TRAVEL
720 Reservoir Avenue, Cranston, RI 02907
943-7700 • Outside RI 1-800-234-5595
RI Lic. # 1069

Touro Fraternal Association

Touro Fraternal Association, the largest independent Jewish fraternal order in New England, recently elected and installed its Lodge and Association officers for the coming year in ceremonies at its headquarters at 45 Rolfe Square.

For the first time in the Association's history, brothers were elected to serve as presidents of Touro's lodges. Gary Lamchick of Cranston was elected president of Harmony Lodge and Andrew Lamchick of West Warwick was chosen to head Friendship Lodge.

Touro will kick off a year-long Diamond Jubilee Celebration in September. The Association, which is not affiliated with Touro Synagogue, was chartered by the Rhode Island General Assembly in 1917 and organized in 1918.

Attention New Hospital Staff

The Jewish Community Center of Rhode Island, located at 401 Elmgrove Avenue in Providence, welcomes new medical house staff members to take advantage of the Center's facilities. The facilities include a four-lane swimming pool, fitness classes, quality day care, a preschool and numerous social and cultural programs. Join the Center during this special offer from July 1 to December 31 and save 10% off the cost of membership. To know more about what the Center offers, please contact Membership Coordinator Evy Rappoport at 861-8800.

Other officers of Harmony Lodge are Joel Pressman, vice president; Morton Coken, secretary, and Peter Hodosh, treasurer. All are Cranston residents.

The other officers of Friendship Lodge are Charles Dressler, West Warwick, Vice president; Ronald Berman, Warwick, secretary, and David Fink, Cranston, treasurer.

Re-elected to the Board of Directors for three years were Morton Coken and Arthur Poulten; Barry Newman and Barry Shaw of Warwick, and Joseph Shapiro of West Warwick. David Fink of Cranston was elected to fill two years of an unexpired term.

Presiding over the installation ceremonies were State Senator David Sholes of Cranston, installing officer, and Robert Miller of Warwick, the master of ceremonies. Both are past presidents and current members of Touro's Board of Directors.

At its subsequent annual organizational meeting, Touro's Board re-elected Arthur Poulten of Cranston as its chairman and Nathan Lury of Warwick as vice chairman. Also elected were Michael Mitchell of Providence, secretary, and Gerald Hodosh of Cranston, treasurer.

(continued on page 15)

Quality Fruits & Vegetables

50 Cliff Street
(behind Benny's on Main Street)
884-3467

Open:
Monday-Friday 9-6
Saturday 9-5

workouts with results. period.

Body Architects
Fitness Training Specialists

since 1987. our staff of professional, Nationally Certified Personal Trainers provide you with routines that are anything but. At home or at the facility of your choice, your program is specially designed to meet your needs.

call today for a brochure or free consultation.
401-453-0243.

no frills, no fluff, just serious sweat.

SALE

PRE-AMBLE

10% to 50% OFF
EVERYTHING IN OUR STORE!
Through July 3, 1992

Merchandise Arrives Weekly

BUY • SELL
NEW • OLD
FURNITURE • ACCESSORIES
Interior Decorating Services Available
738 Hope Street, Providence • 274-1322
Rob Dickson, Interior Designer
Monday-Friday 10-5:30, Saturday 10-5

Events At The JCCRI: Week Of June 26-July 2

The Jewish Community Center of Rhode Island, located at 401 Elm Grove Avenue in Providence, is a valuable resource to members of the community, young and old alike. Whether it be a place to exercise, to attend enrichment classes, to learn English or to enjoy fine art, the Center offers a wide variety of exciting programming. The following list highlights activities that will be held during the upcoming week. For further information, please call 861-8800 and ask for the person indicated.

Aquatics and Health and Physical Education Summer Session

Space is still available for Aquatics and Health and Physical Education courses during the summer. Classes run June

29 through August 21. Parent and Tot Swim Class, Red Cross Beginner and Advanced Beginner Swim Instruction, Children's Swim Instruction, Adult Swim Instruction, Swimming, Earlybird Aerobics and 9 a.m. Adult Fitness Classes (free of charge to full members) are still open. For information, call Patty Gold.

Dungeons and Dragons Class

New summer session open to youths in grades 6-12! Explore exotic lands and magnificent castles in this popular fantasy game. The six-week session will be held on Tuesdays from 1 to 4 p.m. Dungeon Master Phil Hiron will lead the adventures starting July 7 and ending August 11. The cost for the "D & D" summer session is

\$50 for full members and \$75 for supporting members. Contact Alisa Yanow for further information.

Preschool/ITC Openings

A limited number of openings remain for the Preschool and Infant/Toddler Center for the fall. For further information or to apply, please call Eva Silver.

Seniors/Kosher Mealsite

Seniors are invited to join a variety of activities and to share a hot kosher meal at noon at the JCCRI Kosher Mealsite. The doors open weekdays at 10 a.m., with casual conversation in the lobby for an hour. Exercise is scheduled during the week at 11:15 a.m. Seniors can try their hand at bridge on

Monday afternoons from noon until 3:45. A women's group meets every Tuesday morning from 11:15 to noon. Friend to Friend meets Thursdays from 11 a.m. until noon. Bingo is played on Thursdays from 12:45 until 2 p.m. Shabbat traditions are observed on Fridays. Sundays begin with tea, coffee and breakfast cake at 10 a.m., followed by a variety of movies or VCR programs.

Friday, June 26: VCR program, "Violinist Itzhak Perlman Visits Russia," 11 a.m.

Sunday, June 28: VCR program, "MGM: When the Lion Roars," 11 a.m. to noon.

Thursday, July 2: Golden Age Club board meeting, 1 p.m.

For further information or details, call Sandy Bass.

Majestic Senior Guild



Debbie Waldman

The Majestic Senior Guild lunch and installation of officers will be held at the Marriott Hotel, Orms St., Providence, on June 30, at noon. The entertainment will be well-known Debbie Waldman, who has been a professional performer since the age of 14. This versatile singer-actress has been seen throughout the northeast in night clubs, concerts, television, radio, commercials and most recently her own Las Vegas-style club act. Her vocal styles cover popular music, standard jazz as well as music of the United States, British Isles and Israel. She accompanies herself on the guitar. Debbie holds a Master's degree in Ethnomusicology from Brown University and a Bachelor's degree in Education from Wheelock College. Because of her "zingy" style, songs that have long been forgotten, are heard in a new way.

Max Riter will be the installation officer. Chairpersons for the 1992-93 season will be: Ida Woled, Ways and Means; Simon Chorney, Charities; Bertha Gershman, Program; David Tarsky, Publicity; Beverly Manecofsky, Membership; Frances Dress, Telephone; Ruth Kimel, Hospitality; and Tillie Orleck, Sunshine.

Deposits for The Pines, Kelly's in the Poconos, Atlantic City and the musical "Gypsy" are now being accepted. Don't delay and be left out.

We have limited seating for the musical "The Sheik of Avenue B" at Town Hall Theatre, Broadway, New York, on November 4. This delightful musical is part English and part Yiddish. An early deposit by July 15 is required. Reservations will be first come, first served.

Farewell Breakfast At Sons Of Jacob

The Congregation Sons of Jacob Synagogue and Pearlman & Vogel law firm invites the public to a farewell breakfast for Rabbi and Mrs. Yitzchok Dubovick and family on Sunday, June 28, at 9:30 a.m. at Congregation Sons of Jacob Synagogue, 24 Douglas Avenue, Providence, R.I.

RSVP by Thursday, June 25. For more information call Mr. George Labush at 724-8586 or Ms. Brenda Fishman at 274-6324.

BJE Yiddishcamp — July 27-31

The Seventh Annual Yiddishcamp, co-sponsored by the Bureau of Jewish Education of Rhode Island and the Jewish Community Center of Rhode Island will be held from July 27 through July 31 from 10 a.m. to 2:30 p.m. at the JCC/RI, 401 Elm Grove Avenue, Providence, R.I. 02906. This nationally recognized program has attracted over 300 adults over the last six years. This year's enrollment is limited to sixty participants.

Classes in Yiddish language and literature, in three levels, and courses in history and culture of Eastern Europe Jewry will be offered. Staff for Yiddishcamp includes a talented group of professionals. Among the teachers are Eva Gutman, Dr. David Kaplan, Lea Eliash, Moli Prebluda, and Varda Stieglitz.

New scheduling will allow students to participate in an abbreviated program which

can end at 1:30 p.m. The morning Yiddish language and literature classes will run from 10 a.m. to noon. Lunch (students should bring a dairy brown bag lunch and coffee and... will be provided) will be held from noon to 12:30 p.m. Afternoon lecture will be from 12:30 to 1:30 p.m. From 1:30 to 2:30 p.m. there will be activities such as cooking, Eastern European folk dancing, and discussions based on Yiddish theatre videos. This modified schedule can accommodate adults who maintain varied personal and

work schedules. Use of the JCC/RI pool is available to Yiddishcampers throughout the week.

Cost for the week will remain at \$42 as it has been for the past three years. Carpools, if necessary, may be arranged. Yiddishcamp is open to adult lovers of Yiddish and Yiddishkeit of all ages. For applications and for more information, write or call Ruth Page at the BJE/RI, 130 Sessions Street, Providence, R.I. 02906 (401) 331-0956.

Sons Of Jacob Congregation

Friday, June 26 - 25 days in Sivan. Candlelighting at 8:05 p.m.

Saturday, June 27 - 26 days in Sivan. The Parshas today is Shlach. Also we will be blessing the new month of Tamuz, which falls on Wednesday, July 1, and Thursday, July

2. The Molad (appearance) is Tuesday, June 30, at 10:23 a.m. and 33 seconds (chalokim).

Shacharis (morning) services at 8:30 a.m. followed by kiddush. Shabbos is over at 9:17 p.m. Havdalah at 9:20 p.m.

Sunday, June 28 - Morning services at 7:45 a.m. followed by our monthly meeting. Then, at approximately 9:30 a.m., we will honor Rabbi and Mrs. Yitzchok Dubovick and family with the breakfast which has been planned for several weeks.

Cranston Historical Society

The Cranston Historical Society held its annual "Picnic On the Lawn" June 16 with more than 50 members and friends in attendance.

One of the highlights of the evening was the presentation of the Hall of Fame Award. This year two longtime members were honored. They were J. Lewis Eddy and E.A. "Butch" Palmer.

Mrs. William Caldwell accepted an award and plaque on behalf of her late husband, a longtime member of the society. The plaque will be placed inside the Joy Homestead and will note that a tree has been planted on the grounds in his memory.

Outgoing President Robert Carosi, who presented all awards, was himself the recipient of a gift from the society for his longtime service to the organization. Carosi was also President of the Junior Society back in the 1970s.

PATCHES
INCORPORATED

"Unique Personalized Children's Gifts"

Rocking Chairs	Wall Mirrors
Clothes Trees	Doll Cradles
Bulletin Boards	Toy Chests
Student Desks	Bookends
Clocks	Lamps

...and much more

(401) 946-8885

By appointment only
Jodi Miller and Marcy Granoff

KEEP
IN
TOUCH!

Your Loving Parents

To: My Son/Daughter
The Best School
Any City, USA 00000

Rhode Island Jewish
—HERALD

Your children are growing up, moving out, starting college. Keep them connected to their Jewish heritage and local happenings with a gift subscription to the Rhode Island Jewish Herald. Staying in touch has never been easier!

LOCAL: \$10/yr.
 OUT-OF-STATE: \$14/yr.
 OUT-OF-COUNTRY: \$25/yr.

Please mail to the following one year of the Rhode Island Jewish Herald, courtesy of _____

Name _____

Address _____

Mail check to: Rhode Island Jewish Herald, PO Box 6063, Providence, RI 02940



School Beat



PHDS 3rd Grade Forms Its Own Society



Gabi Mitchell, Daniella Friedman, Aviva Shafner and Yael Silberberg are busy selling and buying at the mini-society.

Saul Abrams Memorial Essay Contest Winners

The awards for the 1992 Saul Abrams Memorial Essay Contest were presented at the Annual Kidspace/PTC Dinner at the Jewish Community Center of Rhode Island, 401 Elmgrove Avenue, in Providence. Each entry in the contest was required to interview and write about a Jewish adult who has made a positive impact on the Rhode Island Community. A total of ten awards were received by eleven students, all from the Providence Hebrew Day School. Honorable Mentions were awarded to students: Reena Schafer (about Rabbi Nissel), Natanya Raskin (about Rabbi Strajcher), Rachel Berman (about Marlene Berman), Zimra Smith (about Zvi Herschel Smith), Chara Hartman (about Rabbi Hartman), Daniel Stieglitz (about Varda Segal) and Yisroel Donowitz (about Mrs. M. Donowitz). A third place was jointly awarded to Dena Krakowski and Esther Shafran who wrote about Rabbi Shafran. The second place award was given to Rivka Giber who wrote about Mr. Moshe Fever.

The first place prize was awarded to Yaakov Dubovick, age 10½, who wrote about Rabbi Yitzchok Dubovick. Yaakov will receive a U.S. Savings Bond and a tree planted in Israel in his name.

"Rabbi Yitzchok Dubovick

has done many things for the Jewish community of Providence, Rhode Island. He was born in Providence, R.I. He's married and has 9 children; 7 go to the Providence Hebrew Day School and out of the 7, one goes to high school. He himself went to the Providence Hebrew Day School and continued his Jewish education at the Telzer Yeshiva in Wickliff, Ohio.

"He returned to Providence at the request of Rabbi Nachman Cohen, Dean of PHDS to help found the NEAT Boys Division. He serves as dorm counselor and was a student taught under the guidance of Mr. Edward Adler. He was granted a permanent teacher's license by Torah Umesorah. He was appointed a *mohel*. To this date he has circumcised close to four thousand Jewish babies and adults. He taught at the PHDS until 1981 when he was appointed New England Region coordinator for K of K Kosher supervision.

"In the early 1970s he co-founded camp Shalom with Rabbi Yaakov Uvsvitzky. Camp Shalom was Rhode Island's first Torah-oriented day camp. He also assisted Rabbi Uvsvitzky in setting the standards for the Chevra Kadisha and training both men and women to perform *tahara's*. With the arrival of Russian immigrants, Rabbi Dubovick enlisted the aid of the

late Dr. Nathan Chaset and Dr. Harry Iannotti, organizing and performing *bris milah* for the immigrants. Rabbi Dubovick taught himself Russian so that he could speak to the immigrants and explain to them the importance of *bris milah*. Knowledge of Russian helped him later to teach Judaic subjects to the immigrant students at PHDS. He later was granted staff privileges at Beth Israel Hospital in Boston and in Mass. Medical Center in Worcester to perform *bris milah* upon Russian immigrants in those cities.

"Rabbi Dubovick has performed *bris milah* for the Russians without accepting payment as well as for families having financial problems.

"In his work in the field of *kashruth*, Rabbi Dubovick has traveled throughout the United States and is a recognized expert. His most recent appointment is a director of the K of K's new office in Israel. Rabbi Dubovick grew up in Providence where wearing a *yarmulka*, going to a Day School and being Torah observant was unusual, not like today. I believe that his contributions to Providence have made a big impression."

The essay contest, sponsored by the Children's Department, was established in memory of Saul Abrams and is open to children entering grades 4-6.

Sign-Ups For JCCRI Summer Day Camps

Toddlers to teens can still join the fun of Summer Day Camps at the Jewish Community Center of Rhode Island, located at 401 Elmgrove Avenue, in Providence. Weekly sessions continue, the last one beginning on Monday, August 17. There are six camps available for ages 2½ to 15 years.

Camp K'ton, for ages 2½ to 3, runs from 9 to 11:30 a.m. Choose a two-morning program Tuesday and Thursday, or a three-morning program Monday, Wednesday and Friday.

Camp Yeladim, for ages 3 to 5, runs five days per week. The days run from 9 a.m. to noon or 9 a.m. to 3:30 p.m. for 3-year-olds; 9 a.m. to 3:30 p.m. for 4- to 5-year-olds. For information regarding Camp K'ton and Camp Yeladim, please call

(continued on page 15)



Lively buyers and sellers enjoyed profits and bargains. Seen are Ben Halper, Sam Halper, Roman Mezhberg, Eliana Gutman and Abby Winkleman.

by Mrs. Judy Dlugos
3rd Grade Teacher

This past year in Social Studies we have been learning about communities and the roles that each of us could play in them. To culminate our year we have formed a "Mini-Society" in our classroom.

In our Society we vote on a name, design money, design a flag, elect a Mayor, Treasurer and a Director of the Board of Licenses. The children who fill these roles get a salary on top of the revenue that all citizens receive. With this money they are taxes for rents and supplies.

Once a week we open our mall and each child has a business to run. Their merchandise can be anything from home-made crafts to store bought food. The children price and

sell their goods and keep the profits to spend in other stores.

At the close of our Society we have a giant auction with their profits.

SUGARMAN DESIGN

Thoughtful and Creative Design Solutions

Kitchens Additions Home renovation Offices Restaurants
Daniel Sugarman 751-8888 initial consultation free

Joseph Rubiano, Sr. Joseph Rubiano, Jr. Andrew Galasso



MOUNT FUJI GARDENS, INC.

We Specialize In All Landscaping & Oriental Pruning
Japanese Gardens • Lawn Maintenance

7 Carl Avenue, North Providence, RI 02904 • 353-5268

Let the community know about your organization's functions. Announce them in the *Herald*.



FREE
MOTH PROOFING
ON ALL
DRY CLEANING

KENT CLEANERS

Wayland Square, Providence

Town & Country
CLEANERS

220 Willett Avenue, Riverside

Pawtucket 724-3114

JACK M. MINKIN

dba/Tile-Set

CERAMIC TILE INSTALLATION AND REPAIRS
Cleaning, Regrouting and Sealing — Leaks Fixed
KITCHEN and BATH REMODELING
Electrical and Plumbing

"A TROUBLESHOOTER WITH IDEAS"

INSURED • R.I. LICENSE NO. 4210 • REFERENCES

**MEDICAL-HEALTH RELATED SPACE
FOR SALE OR LEASE WITH OPTION
TO BUY AT REDUCED PRICES!!!**

EAST BAY MEDICAL CENTRE
250 Wampanoag Trail — Easy on and off I-195 and I-95

EXCELLENT FACILITIES!

Building has on-site x-ray and lab facilities,
elevator and parking.

ONLY 2 SUITES AVAILABLE

Approximately 900 and 750 sq. ft.

CALL NOW! 438-1010 • 942-2525 • 353-9287

OBITUARIES

BEATRICE FAIN

PROVIDENCE — Beatrice Fain, 81, of 750 Elm Grove Avenue, died Sunday, June 21, 1992, at Miriam Hospital. She was the wife of Archie Fain.

Born in Quincy, Mass., a daughter of the late Sol and Goldie (Feinberg) Wald, she lived in Providence for 51 years. She previously lived in

New York. Mrs. Fain attended a teachers college in New York, and had been secretary to the chairman of the Liquor Commission of New York State.

She was a member of Temple Emanu-El, and its Sisterhood. She was a board member, former president and a founder of the Women's Association of the Jewish Federation of Rhode Is-

land.

Mrs. Fain was a member of Hadassah, the Women's Associations of the Jewish Home for Aged and Miriam Hospital, and the National Council of Jewish Women. She was a founder of the Rhode Island branch of the Brandeis University Women's Association.

Besides her husband she leaves a daughter, Linda Fain; a son, Barry W. Fain, both of Providence; a sister, Doris Soppkin of Florence, S.C.; a brother, Stanley Wald of South Orange, N.J.; and four grandchildren.

The funeral service was held Tuesday, June 23, at Temple Emanu-El, Morris Avenue. Burial was in Lincoln Park Cemetery, Warwick. Services were coordinated by Mount Sinai Memorial Chapel, 825 Hope Street, Providence.

ADELE R. KOREN

NEW BEDFORD — Adele R. Koren, 72, of 537 Rockdale Avenue, died unexpectedly at home Tuesday, June 16, 1992. She was the wife of Herbert Koren and daughter of the late Harry and Ida (Gitlin) Rubin.

She was born in Boston and lived in New Bedford for 20 years. She formerly lived in Milton. She was a communicant of Congregation Ahavath Achim and was an administra-

tive assistant at Collegetown Clothes for Men for 12 years until retiring nine years ago.

Mrs. Koren was a member of the Ahavath Achim Sisterhood, National Council of Jewish Women, New Bedford Jewish Convalescent Home, New Bedford Hebrew Free Loan Association, Hadassah, and Sisterhood of Tifereth Israel.

Besides her husband, she is survived by a daughter, Bonnie Koren Carcerano of Randolph; and two grandchildren.

Arrangements coordinated by the Max Sugarman Memorial Chapel, 458 Hope Street, Providence, R.I.

SYBIL A.

KOSLOFSKY-FISHMAN

PROVIDENCE — Sybil A. Koslofsky-Fishman, 47, of 1571 Main Street, West Warwick, died Tuesday, June 16, 1992, at the Miriam Hospital in Providence. She was born in New York City, a daughter of the late Sol and Esther (Sedlitz) Koslofsky.

She had been a resident of West Warwick for the past 4 years, previously residing in Phoenix, AZ, for four years, residing in New York City prior to that.

For four years she had been property manager for Wolooohojian Realty Co. in Pawtucket.

She is survived by two sisters, Myra Koslofsky of West Warwick and Louise Chapman of East Greenwich, and two nieces, Elise Chapman and Kara Chapman.

Funeral services were held Thursday, June 18, at Mount Sinai Memorial Chapel, 825 Hope Street, Providence. Interment took place Friday, June 19, at Cedar Park Beth-El Cemetery in Paramus, N.J.

HENRY ORLECK

CRANSTON — Henry Orleck, 69, of 118 Chandler Ave., a salesman for the Broadway Tire Co., Pawtucket, for the past 30 years, died Thursday, June 18, 1992, at home. He was the husband of Ruth (Walsh)

Orleck.

Born in Providence, a son of the late David H. and Ida (Silver) Orleck, he lived in Cranston since 1959.

Mr. Orleck was an Army veteran of World War II and the Korean War. He was a member of the Jewish War Veterans of America.

Besides his wife he leaves a sister, Beatrice Friedman of Warwick.

A graveside service was held Sunday, June 21, at Sharon Memorial Park, Sharon, Mass. Services were coordinated by Mount Sinai Memorial Chapel, 825 Hope Street, Providence.

JACOB SEEGAL

KEY BISCAYNE, Fla. — Jacob Seegal, 84, of Key Biscayne, and Middletown, R.I., a draftsman, engineer and supervisory engineer at the Naval Underwater Warfare Center, Newport, for 37 years before retiring in 1972, died Tuesday, June 16, 1992, at St. Peter's Hospital, Albany, N.Y. He was the husband of Molly (Field) Seegal.

Born in Romania, a son of the late Louis and Rose (Shpringer) Seegal, he came to Rhode Island at age four.

After graduating from Brown University in 1930, he moved to Aquidneck Island in 1935. He was a Cub Scout leader and a founder of Temple Shalom, Middletown, where he served as its second president. In honor of his service to the community, Mr. Seegal received the Key to the Town of Middletown. He lived at Beechland Place.

Besides his wife he leaves two sons, Robert Seegal of Baltimore, Md., and Richard Seegal of Albany; a brother, Harry Seegal of Connecticut; a sister, Helen Kamins of Pompano Beach, Fla. and two grandchildren.

The funeral was held Sunday, June 21, at Temple Shalom, Valley Road. Burial was in Beth Olam Cemetery, Middletown. Arrangements were by the Max Sugarman Memorial Chapel, 458 Hope St., Providence.

RUBIN MEMORIALS

Monuments and memorials
in the finest granite and bronze.

In-house consultations by appointment

LETTERING • CLEANING • REPAIRS

Leon J. Rubin 726-6466

Affiliated with Charles G. Morse Granite Company

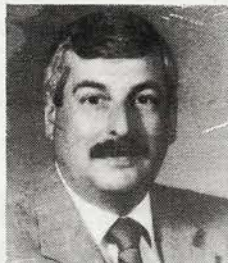
MT. SINAI MONUMENTS

Our owner, Mitchell... his father and grandfather... have been privileged to provide over 8,000 monuments in RI Jewish Cemeteries since the 1870s for two reasons... the quality is the finest and the price is the lowest.

Call 331-3337 for assistance.

The Smith family tradition

The Smith name has been known and respected by Jewish families for many years. The late Rev. Meyer Smith was Rhode Island's revered mohel for generations. Cantor Jacob "Jack" Smith prepared countless children for Bar and Bat Mitzvah and later sang at their weddings. Now, in the true spirit of his grandfather and father, Michael D. Smith continues his family's tradition of service to the Jewish community as Executive Director of the Max Sugarman Memorial Chapel.



Michael D. Smith
Executive Director
Lewis J. Bosler, R.E.

Max Sugarman Memorial Chapel

A tradition of service to the Jewish Community for generations
past and generations to come.

458 Hope Street, Providence, Corner of Doyle Ave.

Telephone: 331-8094 Out of State: 1-800-447-1267

PLEASE CALL OR STOP IN FOR YOUR COPY OF A LIVING WILL



For over 40 years, the owner of **Mount Sinai Memorial Chapel**... Mitchell... has served Rhode Island Jewish families over 8,000 times... as a professional Jewish funeral director... as did his father and grandfather since the 1870s... with honesty and integrity.

One of the reasons why the majority of Rhode Island Jewish families call

MOUNT SINAI MEMORIAL CHAPEL

331-3337

825 Hope at Fourth Streets

Pre-need counseling with
tax-free payment planning
is available.

Please call
for your
New Year calendar.

From out of state
call:
1-800-331-3337

Only RI Jewish Funeral Home that is a member of the
national Jewish Funeral Directors of America.



Evangelicals

(continued from page 6)

evangelicals as 'rednecks,' 'crackers' and 'Elmer Gantrys,' (while) evangelicals have pictured Jews as 'Christ killers,' 'scribes and Pharisees' and 'Shylocks,'" said Rudin.

Jewish apprehension is rooted in the evangelicals' efforts to convert Jews to Christianity, an enterprise that lies at the heart of their faith.

But what evangelicals and Jews can do in meetings such as this, he added, is "to define each other, to learn what is hurtful to the other."

The evangelical proselytizing mission is, in fact, less vigorous in practice than in theology, according to the Rev. Isaac Rotenberg of the Reformed Church in America, who is the son of a Holocaust victim and a Christian mother.

"The evangelical church is in its essence a missionary church, and we must confess our missionary mandate to all people," he said. In practice, however, "the missionary impulse is dormant." Rotten-

berg explained. "Because Israel is so important to us, we are saying, in effect, 'Let G-d take care of it.'"

Anti-Jewish

(continued from page 6)

identity as sovereign nations, to the extent that religious fundamentalism and anti-Western ideology become appealing, they will also take on the trappings of anti-Israel and anti-Jewish sentiment," he said.

"In 1990, the attitudinal problems were not nearly as acute," he pointed out.

Particularly negative attitudes also were found in Belarus, formerly known as Byelorussia or White Russia. More than half of Belarussians (54 percent) agreed that "Jews greatly overstate their misfortunes, sufferings and sacrifices."

Belarussians again, more than respondents in any other republic, agreed that "Jews are mainly responsible for the disasters of the Revolution and the mass repressions of the

CLASSIFIED

Some Green

(continued from page 3)

don't use weedkillers, I just add a little gravel. Otherwise the wind carries in bits of soil and weed seeds. You have to keep it up. I turned 80 this year. It gets harder to fix everything just so."

Actually, Alfred and Sylvia both look as though their Eden has kept them young as springtime. I look around at my familiar street. From inside this heaven it takes on a freshness and novelty. Their small compact world settles your soul.

Katchor's Knipl

(continued from page 11)

the subject of the craft of caricature.

"People read and see your work on a regular basis, like once a week or month. It's not like a painting, where you glance at it and walk on. Or a book you put back on the shelf. Or a movie you forget. Cartoons weave themselves into the fabric of your life. If you think about it, that's really something. People that you don't even know, they know you. The folks who just laugh at the daily syndicates aren't my audience. My fans enjoy something subtle or complex. At least, that's what I try and do."

Ben Katchor is a new kid on the block, a fresh artist in town. His designs are quirky, oddball. They have mood, a lonely atmosphere, and a wonderful eye for details. You can find books of the Knipl beat in bookstores or you can follow his fortunes and misfortunes in the panels of small papers over your daily coffee.

"For me, every street corner in R.I. holds fresh treasure," says Ben. Maybe he'll dig them up for you, too.

Sign-Ups

(continued from page 13)

Debbie Blitz.

Camp Haverim, for grades K-4, is offered five days per week from 9 a.m. to 3:30 p.m. Call Pamela Lippka for details.

Sports camp, for age 4 and grades K-4 is offered five days per week. Grades K-4 meet from 9 a.m. to 3:30 p.m. and 4-year-olds meet from 9 a.m. to noon. For further information, please call April Peters.

Bogrim (Preteen Camp) is available to those entering grades 5-7. Bogrim runs five days per week from 9 a.m. to 3:30 p.m.

CIT/Teen Camp is offered to those entering grades 8-10 and runs five days per week from 9 a.m. to 3:30 p.m. Call Alisa Yanow for information regarding Bogrim and CIT/Teen Camp.

Early arrival and extended day hours are available for Camp Yeladim, Camp Haverim, Sports Camp and Bogrim at an additional fee. Call the Center at 861-8800 for details.

GET THE FACTS...
READ THE HERALD.

Laurels

(continued from page 1)

cial and particular world, of the orthodox and the unaffiliated, the prominent and the humble. The jovial image of Rabbi Korff carries off an air of legend.

The crowd that congratulated him for the use he made of "his mother's years" gave him a round of heartfelt applause.

Anti-Jewish

(continued from page 14)

Soviet era." While 25 percent of those in Belarus supported that statement, only 2 percent of Estonians did so.

Fifteen percent of Belarusians say that Jews have too much influence. And when asked if there are specific peoples whose behavior provokes violence, 11 percent of respondents in Belarus cited Jews. In both cases, the responses were more negative than in any other republic.

It is not yet clear why people in Belarus, which shares borders with Russia, Ukraine, Latvia, Lithuania and Poland, have such negative opinions of Jews.

"We are still trying to understand the phenomenon there," said Harris.

Middle Eastern

(continued from page 9)

My satisfaction with the food at Hot Pockets was reaffirmed by Michel Mardo, a native of Lebanon who has been in the U.S. for several years. Mardo has been coming to the restaurant for all of the five years it has been in business. He said that it is one of his preferred places to eat because the Lebanese food at this restaurant is the most authentic in Rhode Island.

"Everything here is delicious," he added, along with his suggestions of what to order.

Mardo said a perfect choice for an appetizer would be *taboli*, a blend of parsley, wheat, tomatoes, olive oil and lemon juice; or *humus*, a unique blend of chickpeas, tahina, lemon juice, salt and garlic. Next, for lunch or dinner he suggests the *babaganouj*, which is his personal favorite. Lastly, to put an end to your meal, Mardo said the *baklava* is a must.

Paulene does custom jewelry design
274-9460

WE SIT BETTER
A referral service for companions to the elderly, since 1967
401-421-1213

M.J. GORDON CONSTRUCTION CO.
ASPHALT • CONCRETE
Driveways • Sidewalks • Cellar Floors
Retaining Walls • Stone Work
All Work Guaranteed
Fully Insured • Lic. #8277
722-0449
Always Free Estimates LEAVE MESSAGE

AIR CONDITIONING
INSTALLATION & SERVICE
HOT WATER HEATERS • FUEL OIL
"Three Generations Of Service"
ENTERPRISE FUELS, INC.
723-8282 155 TRENTON ST. PAWTUCKET

\$5.60 That's all it costs to reach our readers.
CALL 724-0200 FOR MORE INFO

Harold Greco Ceilings
Walls & Repair Work • Plastering
463-6354

A.S.A.P.
Upholstery & Window Treatments, Inc.
• Full Service •
• Licensed & Insured •
JOEL SEGAL
728-1770

Complete Remodeling to Modest Repairs
BATHROOMS
by Wayne Goodlin
EXPERT TILE • PLUMBING • ELECTRICAL • NEW FIXTURES
14 Years Experience • Fully Insured • RI Lic. #2665
Free Estimates 401-658-4141
Cumberland

VINYL REPLACEMENT WINDOWS
• 7/8" DOUBLE INSULATED GLASS
• CONTINUOUS LIFT HANDLE
• NIGHT LOCKS + 1/2 SCREEN
• ALUMINUM REINFORCED INSERTS
• LIFETIME WARRANTY
\$149 * INSTALLED UP TO 93 U.I.
WEATHERGUARD, INC.
574 WASHINGTON STREET, COVENTRY, RHODE ISLAND
Financing Available 828-7677 Lic. #1700

ENTERTAINMENT

STEVE YOKEN ENTERTAINMENT — Professional Master of Ceremonies and Disc Jockey. Bar/Bat Mitzvah specialists. **N.Y. Laser Light Show Plus Male/Female Dancing Sensations. THE PARTY PLANNERS CHOICE** 508-679-1545. 1/31/93

FOR RENT

GARAGE FOR RENT between Cooke and Governor streets on East Side. Heated. Call 521-7641 for information.

JOBS WANTED

CARE FOR THE ELDERLY or handicapped. Housekeeping, driving, shopping and other errands. Reasonable rates. Call Helena 438-8341 or Ana 438-0952. 8/13/92

SERVICES RENDERED

"CLASSIC EUROPEAN CATERING" By Ana and Fatima. Servicing all types of social occasions with a touch of class and precision. Formal. Call Ana 438-0952. 5/7/93

SERVICES RENDERED

MERCURIO PAINTING. Interior & Exterior painting & papering. Expert work, prompt service and low rates. Book now for Spring Savings! Our work speaks for itself. Insured, Lic #5264, 461-3813. 7/9/92

PARTY HELP - Available evenings and weekends. Serving, cleaning & general help. References. Call Ana 438-0952. 9/17/92

TAILOR LI'S ALTERATIONS. Free pick up and delivery for ladies only. Fully experienced with references. Call 274-2062. 6/25/92

TUTOR: Certified teacher is available to tutor most subjects. Call Denise 274-8887. 7/17/92

CLASSBOX CORRESPONDENCE TO: ClassBox No. The R.I. Jewish Herald P.O. Box 6063 Providence, RI 02940

This newspaper will not, knowingly, accept any advertising for real estate which is in violation of the R.I. Fair Housing Act and Section 804 (C) of Title VIII of the 1968 Civil Rights Act. Our readers are hereby informed that all dwelling/housing accommodations advertised in this newspaper are available on an equal opportunity basis.

Clisco CLEANING SERVICES
\$15 OFF INITIAL HOUSE CLEANING
Weekly/Biweekly/Monthly • Carpet/Upholstery Cleaning
Free Estimates • Fully Insured & Bonded
Satisfaction Guaranteed! 726-6702

LANDSCAPING, INC.
Complete Landscaping Service
Fully Insured • Free Estimates
Gary Pontarelli • 724-7805

Antique Refinishing
Professional Stripping
Regluing • Repairs
Call Shaif
434-0293 435-5445
Free Estimates • Pick-Up, Delivery

Ray Stapleton PAINTING
Interior & Exterior
Quality Work - Free Estimates
272-1989
RI Lic # 5791 INSURED

new england pest control
HOME OF THE BIG BLUE BUG
THE PEST CONTROL EXPERTS
CALL US!
941-5700

COMPLETE LANDSCAPING SERVICES
COMMERCIAL • RESIDENTIAL
New Lawns • Planting • Mulching
Brick & Bluestone Walks & Patios
Driveways • Backhoe Work
MATARESE LANDSCAPE CONST. INC.
Over 17 Years of Professional Experience
Former Partner of M & M Landscaping
Fully Insured
944-9334 • Cranston, RI

RHODE ISLAND JEWISH HERALD CLASSIFIEDS
15 words: \$3.00
12¢ each additional word
Category Message _____
Name Address _____
Phone No. Words _____ Date(s) Run _____
TO INCLUDE A BOX NUMBER, SEND AN ADDITIONAL \$5.00. ALL RESPONSES WILL BE MAILED TO THE HERALD VIA BOX NUMBER, AND FORWARDED TO CLASSIFIED ADVERTISER.
Payment MUST be received by Monday afternoon, PRIOR to the Thursday on which the ad is to appear. 10% discount given for ads running continuously for one year.
Thank You.
RI JEWISH HERALD, P.O. BOX 6063, PROVIDENCE, RI 02940

A Closer LOOK

BUSINESS PROFILES

Cathleen Naughton Assoc. Introduces "Companions"

by Kathy Cohen
Herald Associate Editor

Have you ever found yourself putting advertisements in the newspapers that read like this: Healthy, mature, elderly woman is looking for a companion to play bridge, go shopping, see a movie, or to assist in letter writing and reading. References and car a must. Please call Lisa at 456-7890?

It's time to eliminate the unpleasantness of talking to strangers and having to screen them yourself. And what's more, you do not have to wait for family or friends to find you a companion because help has arrived. **Cathleen Naughton Associates** has thoughtfully extended their home care programs to include "Companions." This new and very affordable division employs mature, caring individuals who motivate clients, encouraging each person to enjoy a brighter day.

Companions can be hired for a number of reasons. A woman may not like to go out to dinner alone or a man may need a golf partner. A companion can go

walking, knit sweaters, go to the theater or relax at home just as a friend might do. On the other hand, a companion can visit someone in a nursing home, who wishes to get more attention and stimulation than the home's normal staff can give. CNA's companions all have varying backgrounds and range in age. However, the majority of those recruited are older, retired, professional people, who enjoy the satisfaction they get from helping others.

First a CNA employee will interview anyone interested in hiring a companion to determine whether the individual needs a companion or one of their other services within their home health care program. The interviewer will then make recommendations as to what type of assistance they feel the client may want or need. Also and most importantly, during the interview process, all likes and dislikes are noted, so that a proper match can be found. With 12 years of experience, the people at CNA know that everyone has different needs. Companions are NOT hired

to administer medications or to handle medical situations. If, at any time, a companion does come across a medical situation he or she is instructed to call a CNA resident nurse, who is on call 24 hours a day for emergencies.

The owners of CNA, Cathleen M. and Caroline M. Naughton, mother and daughter respectfully, feel the most important aspect of the new branch is that the companion and client enjoy each other's company, making life more enjoyable. To ensure this, a coordinator is in constant contact with both parties to see how things are going and if there are any problems that need correcting. Spot checks are made regularly while the companion and client are together.

CNA carefully screens each companion after they receive an application. This process includes checking several references, having personal interviews and checking for criminal records. There is usually a lengthy waiting period before hiring.

Cathleen, who has a degree in nursing, and Caroline, who is working towards a master's degree in social services from Salve Regina College, started the home health care company because they had a strong desire to have their own business.

Sixteen years ago, Cathleen gained experience in the field of social services when she worked for a national company where she eventually became director of nurses. Once her contract ran out, Cathleen decided it was time to go out on her own. Their first office was a two-person operation located on Pontiac Avenue, Cranston. Today their business has expanded threefold.



Cathleen and Caroline Naughton

Located in Providence, Newport and Wakefield, Cathleen Naughton Associates are para-professionals in home health care. Their other services are Mother and Newborn Home-care and Home Health Care Private Duty.

Why be alone in this big and sometimes crazy world of ours? CNA can find the right companion for any man or woman. Life is too short not to make the best of it, so call now to make an appointment and to begin a new fulfilling life.

CNA has offices at 249 Wickenden Street, Providence, (401) 751-9660; 123 Bellevue Avenue, Newport (401) 849-1233 and 313 Main Street, Room 203, Wakefield (401) 783-6116.

Avanti
DESIGNS

HAIR • SKIN • NAILS

NOW OPEN MONDAYS

727 East Avenue
Pawtucket
726-5566

Israelis

(continued from page 1)

their way to stress that Germany did all it could to per-

Rhode Island Events

July 1-30 — "The Blackstone Project." An original theatre work based upon the history of the Blackstone River Valley presented by the Cumberland Company. The Monastery, Rte. 114, Cumberland, 333-9000.

July 1-12 — The Art of the Kimono. Mon.-Sat., 11-4 p.m.; Sun. 2-5 p.m. Features a number of superb examples of kimono exhibiting a range of styles and decorative techniques popular throughout the late Edo period (1615-1868). Woods-Gerry Gallery, RISD, 62 Prospect Street, Providence, 454-6348.

July 1-25 — Hokusai's Sketchbooks. Mon.-Sat., 11-4 p.m.; Sun. 2-5 p.m. Katshika Hokusai is considered to be one of the great geniuses of Japanese print design. The sketchbooks show the range of subjects he explored and the sense of humor that he injected into drawings of farmers, laborers, actors, and other citizens of Japan's Edo period (1615-1868). Woods-Gerry Gallery, 62 Prospect Street, Providence, 454-6348.

suaude Moslem extremists in Lebanon and their Iranian mentors at least to make available information about Arad.

At the same time, however, they acknowledged that Germany's obligation to its own citizens came first.

Bonn also had denied emphatically rumors that it would grant pardons to Mohammad

and Abbas Hamadi, Lebanese Shi'ite brothers serving prison sentences in Germany for terrorist acts, as quid pro quo for freeing Struebig and Kempfner.

But government sources did confirm recently that the brothers will soon be granted special privileges and would be confined to the same prison,

which they have requested all along.

(JTA correspondent David Kantor in Bonn contributed to this report.)

Spigel's

243 Reservoir Avenue, Providence (near Cranston line) • 461-0425

Fresh Ground Hamburger	\$ 1.95 lb
Morrison & Schiff Franks 12 oz. pkg.	\$1.99 ea
Vita Lox 3 oz. pkg.	\$1.99 ea

Not responsible for typographical errors.

Cathleen Naughton Associates
introduces

Companions

Mature, caring individuals who motivate special people encouraging each person to enjoy a brighter day.

- Assist to Personal Appointments
- Assist with letter writing, reading...
- Social Functions — lunch, theatre, shopping...

Companion schedules and rates are flexible to accommodate individual needs and preferences. If you know a special person that may benefit from this type of service please call us at

751-9660 249 Wickenden Street Providence, RI 02903	849-1233 123 Bellevue Avenue Newport, RI 02840	783-6116 313 Main Street Wakefield, RI 02879
-----------------------------------------------------------------	-------------------------------------------------------------	-----------------------------------------------------------

A Closer LOOK

BUSINESS PROFILES

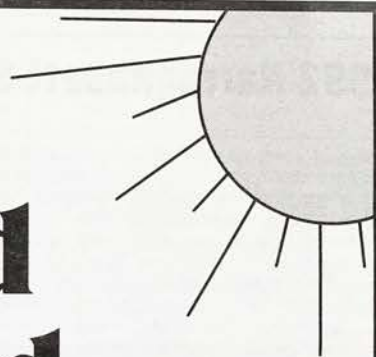
DOES YOUR BUSINESS PROVIDE OUTSTANDING OR UNIQUE SERVICES TO THE COMMUNITY? Why not let our readers know about it?

The Rhode Island Jewish Herald takes "A CLOSER LOOK" at business in Rhode Island and Southeastern Massachusetts in every issue.

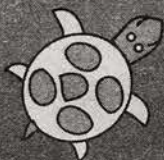
A story on your business, complete with photos, will let our readers know all about your work and what you have to offer the community.

FOR MORE INFORMATION ON "A CLOSER LOOK" CALL MYRNA OR JEANETTE AT 724-0200

**The
Rhode Island
Jewish Herald
1992**



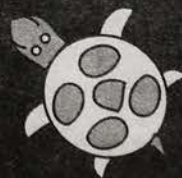
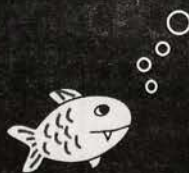
**SOUTH
COUNTY**



and

NEWPORT

Special Issue



SOUTH COUNTY

1992 Narragansett Schedule Of Events

A Narragansett Indian

June 13 - Official opening of beaches.

June 26-28 - R.I. Lobsterman's Festival noon-8 p.m. Port of Galilee, Narragansett. Call: 783-1543.

June 27 - "Fabulous 50's Extravaganza," 8 p.m., Narragansett Ocean Club. Featuring "The Orleans" and R.I.'s own "Reminiscence" sponsored by South County Italian-American Club. For tickets call: 783-5514 or 789-7445.

June 27-28 - Narragansett Art Festival 9 a.m. - Dusk, Veterans' Memorial Park. Call: 789-4079 or 783-7113.

July 4 - Fireworks display 8 p.m. Dunes Club, Narragansett and Old Mountain Field, Wakefield at dusk.

July 4 - Eastern Surfers Morey Boogie Board contest 9:30 a.m., Narragansett Town Beach. Call: 789-1954.

July 10, 11, 12 - 23rd Annual South County Heritage Festival, Marina Park, Wakefield, R.I. Call: 783-8531.

July 11 - Annual Concert, Narragansett Town Beach, 8

p.m. Call: 783-7121.

July 11-12 - Wickford Art Festival, 10 a.m.-Dusk, on the sidewalks of Wickford, featuring over 250 artists. For information, call: (401) 295-5566.

July 14-19 - Big Apple Circus, Ninigret Park, Charlestown, R.I. Call: 364-0890.

July 24 - 10 Mile AAU Road Race 6 p.m., Narragansett High School, sponsored by Narragansett Lion's Club. Call: 783-7121 or 789-9491.

July 25 - "Blessing of the Fleet," noon, Galilee, sponsored by the Narragansett Lion's Club. Call: 789-9491.

July 24-25 - Narragansett Lion's Seafood Festival - Rides, games, seafood booths. Memorial Park, Narragansett. Call 789-9491.

July 31, August 1, 2 - 15th Annual Narragansett Heritage Days, Memorial Park, Narragansett, 100 crafts, nightly entertainment, food booths. Sponsored by Narragansett Chamber of Commerce. Call:

783-7121.

July 31, August 1, 2 - 14th Annual South County Hot Air Balloon Festival, Athletic Field, URI, Rt. 138, Kingston, also antique auto show, sponsored by SK Rotary. Call: 783-1770.

August 2 - 8th Annual Charlestown Seafood Festival, Ninigret Park, Rt. 1, Charlestown, R.I. 10 a.m.-8 p.m. Call: 364-3878.

August 12-16 - 26th Annual Washington County Fair, Fairgrounds, Townhouse Rd., Rt. 112, Richmond, R.I. Call: 783-2070.

August 22-23 - Snug Harbor Team Tuna Challenge, Snug Harbor Marina Gooseberry Rd., South Kingstown, R.I. Call: 783-7766.

September 5, 6, 7 - R.I. Tuna Tournament, Port of Galilee, Narragansett, R.I. Call: 737-8845.

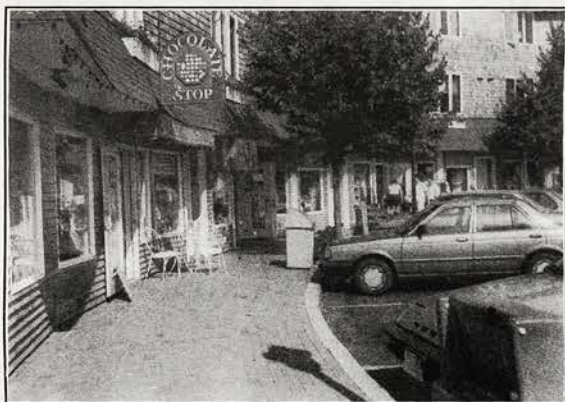
Narragansett Chamber of Commerce, P.O. Box 742, Narragansett, R.I. 02882. Telephone (401) 783-7121.



You'll find this statue at Narragansett Beach.



**Low Rates, High Recognition
—GET THE FACTS—
Advertise Your Business in
THE HERALD.**



A DIVISION OF NEW IDEAS INC.

Turquoise Door

SOUTHWESTERN INDIAN JEWELRY
Fine Jewelry in 14kt. Gold & Sterling Silver
783-4720

Pit & Patia

Before or after the movies, or just any time at all...

- Pizza
- Spinach Pies
- Pigs-in-a-Blanket
- Salads



- Ice Cream
- Desserts
- Calzones
- Broccoli Pies
- Beer & Wine

PIER MARKETPLACE • NARRAGANSETT • 789-9311
Free Delivery to Narragansett & Wakefield

PIER MARKETPLACE

EVERYBODY WINS AT ROOKIEMANIA



PIER MARKETPLACE NARRAGANSETT

OPEN 7 DAYS

(401) 789-3597

Pier Marketplace is the original shopping center located in the town of Narragansett. With approximately 30 specialty shops ranging from retail trade to restaurants and banking, Pier Marketplace is the perfect place to stop and browse after a day at the beach or during a leisurely ride to the shore.

JB's by the Sea Sandwich Shoppe

PIER MARKETPLACE NARRAGANSETT, RI 783-6640

"Custom Catering"
BREAKFAST SERVED
CALL IN ORDERS WELCOMED
7 am - 7 pm • 7 Days Weekly

Whitebird Flowers

Pier Marketplace, Narragansett
A Full Service Florist
(401) 792-3440

afs FLOWERS-BY-WIRE





Nana's

GREAT ICE CREAM and PASTRY

783-9630

Shop PIER MARKETPLACE

— We Have It All —



A Collection of 28 Delightful Shops to Serve You
Rte. 108 North, Right at Third Traffic Light,
Left on Ocean Road.

SOUTH COUNTY

The Narragansett Congregation

by Kathy Cohen
Herald Associate Editor

Prior to 1961, South County had a small community of Jewish residents who basically held services and meetings at each other's homes. These men started meeting regularly for services as far back as 1946. These services continued until, as one of the founders, Lazar (Leo) Kofman, once said, "This peddling around from house to house is enough. We need something permanent."

In August 1962, at the first annual meeting, a group of people signed the corporation papers making an official congregation. They were Hyman Stone, Morris Horovitz, Jacob Frank, Lazar Kofman, Benton Odessa, Bonny Cramer, Sigmond Robinson and Elisha Scoliard. Jacob Frank, the only living original member, still attends services today. The synagogue, yet to be built at this time, was named after Jacob Frank's son, David.

The next project was to build a place to worship, so all the founders donated enough money to build a synagogue. In the fall of 1961, construction of the synagogue was started at a location just a few blocks west

of the Narragansett Beach. Its cost was about \$15,000. Four years after the modest-size structure was completed, the mortgage was paid and the congregants made a celebration of it.

On Sunday, August 15, 1965, Congregation Beth David held a "Mortgage Burning Celebration" almost three years after the dedication of the new building located on the corner of Kingston Road and Fifth Avenue at the Pier.

The *Herald* reported that the congregation had grown "from a summer congregation" of about 30 to 40 men, to close to 200 members." At that time they held daily services, complete Sabbath services - Friday night, Saturday morning and night.

Thirteen years ago, the leaders of the synagogue voted to extend services to year-round as the Jewish community began to grow. Presently there are about 80 year-round members and 65 summer members.

A new Torah Scroll was dedicated during *Slyum HaTorah* services on Sunday, August 14, 1966. The scroll was carried in a procession, by Martin E.



Left to right: Goldie Stone, Shlomo Kofman, John Scoliard with grandfather Chick Scoliard, Chaim Stone with Torah, Lou Roseman and Mr. Chandler.



Martin Zucker

Zucker, who was presenting it in memory of his mother, Mrs. Mary E. Zucker. The five books of Moses, hand-lettered in Hebrew on a roll of parchment, were protected in the outdoor procession by a chuppah, the canopy or baldachin under which weddings take place. The portable chuppah was carried by four of the synagogue's founders, Jacob Felder, Jacob Frank, Morris Horovitz and Hyman B. Stone.

On December 17, 1978, the Beth David congregants held their first Chanukah celebration in which over 100 people, mostly children, jammed into the small synagogue.

The synagogue was originally incorporated as a summer Orthodox synagogue although 75 percent of its members were adherents to Conservative or Reform Judaism. As an Ortho-

(continued on next page)



SURFSIDE MOTOR INN

334 Narrow Lane. Motel rooms and efficiencies. Beach privileges and fine restaurants. Quiet family atmosphere. 1.5 miles from ocean. Casino packages. (401) 364-6726

Friends of the Towers



Proudly Sponsors a Raffle
Proceeds to go towards the Renovation of the Towers

Grand Prize \$20,000
2nd Prize \$10,000
3rd Prize \$5,000

Ticket sales limited to 600. Raffle is contingent on sale of 600 — or money will be refunded. Drawing to be held on THURSDAY, JULY 9, 1992, at a Cocktail Reception.

TICKETS ~ \$100 each

For Tickets Call: 783-0801 783-7121

or Send A Check To:
Friends of the Towers
P.O. Box 3103, Narragansett, RI 02882

The photographs on this page are courtesy of R.I. Jewish Historical Association and Mr. Chandler.

OBSERVE THE
WARNING SIGNS.



If you have chest pain lasting two minutes or more, see a doctor.

 American Heart Association

1992 American Heart Association

NARRAGANSETT RHODE ISLAND CHAMBER OF COMMERCE



"The Towers of Narragansett"

Home of Narragansett Tourist Information Center
5 of the World's Greatest Beaches
Concert in the Park Every Weekend at the Gazebo

15th Annual Heritage Days
will be held July 31, August 1 and 2
at Veterans' Memorial Park
in Narragansett

SOUTH COUNTY

Narragansett Congregation

(continued from previous page)

dox synagogue, anybody in the county could attend. Today it is a full-time Conservative congregation that holds Orthodox services every Saturday morning. It still has its original *michitzah*, dividers separating worshiping men and women during services. Weddings, *bar/bat mitzvah*, baby namings and *brit milah* celebrations (circumcision) are performed at the synagogue.

An Orthodox congregation needs no rabbi or other paid staff beyond a custodian. Their form of worship lends themselves to leadership of the services by individual members and are, in fact, conducted by learned laymen of the Narragansett community.

Guest rabbis, cantors and religious students from the University of Rhode Island have taken part in the services.

The congregants' first *gabbai*, or layperson who distributes the honors at the reading of the Torah, was Leo Kofman, now *Gabbai emeritus*. Today, Ethan Adler of Cranston is their reli-

gious leader. Richard Perlman was guest cantor at last year's high holidays.

The congregation consists of South County full- and part-time residents, vacationers, tourists, Jewish students taking classes at the University of Rhode Island and URI teachers. It only costs \$20 to become a summer member.

Since Beth David is the only temple in all of South County, its regular members feel they are filling a great need for their Jewish community.

Alvin Gabrilowitz has been president for the past three years. Linda Zell is vice president and Dr. Bob Curhan is treasurer.

As this year is the synagogue's 31st anniversary, on Friday, August 7, at 8pm, a special Shabbat service will be held featuring historical items including the original guest list from the burning of the mortgage, old photographs and more! For more information, call Alvin Gabrilowitz at 1-783-0429.



Congregation Beth David of Narragansett held services celebrating the burning of the mortgage paper in 1966. The child in the center is Anna Winograd Doyle, seated on her father Jerry's lap.

The photo above is courtesy of R.I. Jewish Historical Association and Mr. Chandler.

Historic Smith's Castle News

The Cocumscussoc Association which manages Smith's Castle announced recently that educational tours and other activities will continue on the grounds and in certain rooms while plans for major renovations move forward.

The removal of substantial portions of clapboard and sheathing revealed that more than 300 years of gales, blizzards and insect infestation had caused significant structural deterioration. The Association determined that major renovation should be undertaken to preserve the building which has recently been nominated for a National Historic Landmark designation.

The Castle's historic rooms have been temporarily closed. The reception room and library remain open. It is expected that

the Association will shore up the building so that some rooms can be reopened. For the present, visitors can view certain rooms from hallways and doors.

The Board of Trustees of the Association is obtaining engineering and architectural advice on how Smith's Castle should be rehabilitated. Once the Board of Trustees decides upon a course of action, it will seek funds for the restoration.

A tourist attraction since 1948, Smith's Castle dates from 1678. It was the site of Roger Williams' trading post, later a great plantation house, and in this century, the Cocumscussoc Dairy.

For further information contact: Martha Dwyer, President, The Cocumscussoc Association, 55 Richard Smith Drive, Wickford, RI 02852 or call, (401) 295-1437.



Synagogue Beth David

CHUMLIE'S
FAMILY RESTAURANT
AND
CATERING

NOW OPEN FOR BUSINESS
BONNET PLAZA
NARRAGANSETT

**SERVING BREAKFAST &
LUNCH DAILY**

Bring the Family for a
relaxing meal. Choose from
the variety of Daily Specials.
Open 6 a.m. - 2 p.m.

Let Us Cater Your Next Party

Any Size Affair. Cocktail
Parties, Weddings,
House Parties. Party
Consultants on Premises.

789-1351

NARRAGANSETT OCEAN CLUB

Roller Skating • Birthday Parties • Banquets
Fund Raisers • Rainy Day Skating • Group Rates

360 South Pier Road, Narragansett
783-1711

★

DINNERWARE • WINDCHIMES • THROWS

POSTERS • BOOKS • CARDS • TOYS • WOOD

MON-FRI 9-6
SATURDAY 9-5
SUNDAYS BY CHANCE

326 MAIN STREET
OLD WAKEFIELD, RI
(401) 783-0630

MC/VISA/AMX/DISC
WORLDWIDE SHIPPING
FREE GIFT WRAPPING

Marcie & Jerry Saywell

LEATHER • CANVAS • MIRRORS • BLOWN GLASS • DESKTOP • SCRIMSHAW

FISH



SOUTH COUNTY

The Official South County Recreation Guide

South County, Rhode Island celebrates the great outdoors and the grand concourse of American history. Situated along "the Ocean State's" magnificent coastline, this glorious expanse of landscapes and seascapes, woodlands and wetlands constitutes approximately a quarter of R.I.'s space, but comprises only eleven percent of its population.

South County's spectacular shoreline encompasses 44 of the finest beaches in North America. But, the area is more than silken strands of pure sand beside a sparkling, cerulean sea; it includes thousands of acres of pristine forests and fields, parks and preserves, ponds and lakes, rivers and streams, all delighting the senses with a majestic, never-ending, splendidly natural panorama. Indeed, Rhode Island's Department of Environmental Management has identified almost one-fifth of the R.I. sites considered particularly "distinctive" or "noteworthy" as located in the relatively small Salt Pond/Coastal Plain Region of South County.

Sight-seeing in South County remains a remarkable, pleasurable experience. From the broad sweep delivered by offshore ferries or party boats, to the spell-binding vistas from the area's promontories, to the closer focus of the area's wondrous woodlands and wetlands, to the vibrant still lifes of South County's fabulous fall foliage, the process represents an esthetic triumph.

Consistent with its unspoiled environment and picturesque scenery, South County sustains a broad spectrum of outdoor activities and recreational opportunities. Beach sports and relaxation, of course, predominate, and indeed project the locale to top ranking among U.S. seaside resort areas. Swimming, snorkeling, surfing, or simply sunbathing are leading pursuits, but even the more remote (yet easily accessible) beaches also serve as delightful escapes for diving into a good book, immersing oneself in nature's supremacy, or simply drifting in meditation.

Onshore or offshore, excitement reigns. Some of the finest sportsfishing in the world takes place in the clean, clear water of Block Island Sound and Narragansett Bay. Rhode Island game fish records — established in South County — range from 3 pounds for hickory shad to 1,142 pounds for bluefin tuna, so there's a size to suit every fishing style. Just last fall, for example, a happy angler captured a 140-pound bluefin tuna on 16-pound test leader, for a new world record.

And, South County game fishing is not limited to its ocean and estuaries, its bay and coves. The region's freshwater rivers and streams, its lakes and ponds abound with a fascinating variety of fighting fish, too. Rhode Island freshwater fishing records — again established in South County — range from two pounds for white perch to 35

pounds for northern pike.

South County's for the birds as well. Sometimes it almost seems that most of North America's 20 billion birds congregate in its unspoiled environment. In fact, perceptive South County birdwatchers have the opportunity to view almost two-thirds of the 279 species found on the continent. They range from fierce ospreys and other birds of prey (golden eagles are occasionally seen), to majestic swans and regal great blue herons, to vast multitudes of sea birds and song birds of infinite shape, variety, and coloration.

South County endures as a nature lover's paradise — from the great whales at sea to the playful seals ashore (there were record numbers of harbor seals in Narragansett Bay during the past winter). Inland, thanks to the plentiful forests, the many parks and preserves, the inviolate wetlands, the profuse thicket and other surviving ground cover, much wildlife exists. Deer, coyote, fox, bobcat, raccoon, beaver, woodchuck, possum, squirrel, etc., call the wilderness areas of South County home.

The backcountry sections of South County, of course, present splendid opportunities for hiking, backpacking, trekking, etc. Challenging trails exist. Parks and preserves offer great freedom of topographical choice. Superb campsites abound — for tents or recreational vehicles. And, for those who desire to split their time between a forest setting and beachsitting, the proximity of the shore to the interior makes the experience delightfully easy.

For heritage buffs, South County constitutes a remarkable treasure trove. In a state which holds almost one-fifth of the nation's designated historic buildings, South County has



Narragansett Beach

preserved an amazing array of architectural and antique gems. The interested tourist can trace the development of the nation through the evolution of South County — following in the footsteps of George Washington, Lafayette, Ben Franklin, etc., who traveled the same lanes and visited the same buildings so many years ago when the U.S. was forming.

Rhode Island was founded in 1636 by an extraordinary religious dissident from Massachusetts (which had just been settled at Plymouth Rock in 1620). Rhode Island's founding father, Roger Williams, fled Massachusetts seeking greater freedom of worship and more tolerance for the rights of the Native Americans. Williams earned the great respect of all people, including the Indians, and was responsible for Rhode Island becoming the first colonial settlement permitting complete religious tolerance.

In 1637, a year after his arrival from Massachusetts, Roger Williams established a trading post near the present South County village of Wickford.

A Hot Spot

Subsequently, after extremely bloody conflict with the Indians during the King Philip's War, South County evolved into a series of vast plantations. Later on, in the 19th Century, textile mills proliferated. Important vestiges of all these early periods exist, and are readily available to visitors.

Today, South County continues making history, but it is a history concerned with a new tradition of making people contented — either as warm and hospitable residents or relaxed and satisfied visitors. *Rhode Island Monthly*, "the Ocean State's" award-winning, sophisticated regional magazine, published an evaluation of R.I.'s 39 beautiful cities and towns recently. The result? South County claimed first, second, and third place, plus 9 of the leading 16 slots in the "best town" ranking. Given the inclusion of such factors as open space, low population density, and superior beach

access, South County's entire glorious domain could not fail to dominate.

Block Island, Charlestown, Exeter, Hopkinton, Narragansett, North Kingstown, Richmond, South Kingstown, Westerly, West Greenwich — the communities that comprise South County — are a microcosm of all New England, with wilderness beaches and dunes, historic charm and sylvan retreats. Best known for its miles of ocean beaches and discerning clientele, South County is also one of the world's finest fishing and boating areas. It is a place for kayaking secluded rivertowns and ponds; for poking around a tidewater marsh; for just unwinding while watching the waves roll in from the porch of a seaside bed-and-breakfast or quiet hotel.

There are 179 charming hotels, motels, inns, and B&Bs in South County's ten towns. Many (continued on next page)

Belmont Fruit

"uncompromising quality"

★ FEATURING THE FINEST ★

Fresh Vegetables • Fancy Fruits • Farm Fresh Local Eggs
Freshly Baked Goods • Freshly Squeezed Orange Juice
Fresh Pasta • Specialty Foods • Seasonal Plants and Flowers

FRESHEST LOCAL PRODUCE
SWEET CORN PICKED EVERY DAY
MOUTH-WATERING SUMMER FRUITS
peaches, plums, strawberries, grapes, etc.

Wholesale delivery service 7 days to area restaurants and institutions

783-4656

Belmont Shoppers Park, Wakefield • OPEN EVERY DAY



Red Rooster Tavern

North Kingstown, Rhode Island

ONE OF RHODE ISLAND'S FINEST RESTAURANTS
Under Original Management

Major Credit Cards Accepted • Accommodations For Private Parties

CALL FOR RESERVATIONS

884-1987 or 295-8804

7385 Post Road, North Kingstown (1/4 mile south of Quonset Point)
Open: Tuesday thru Saturday 5 pm • Sunday 1 pm • Closed Monday

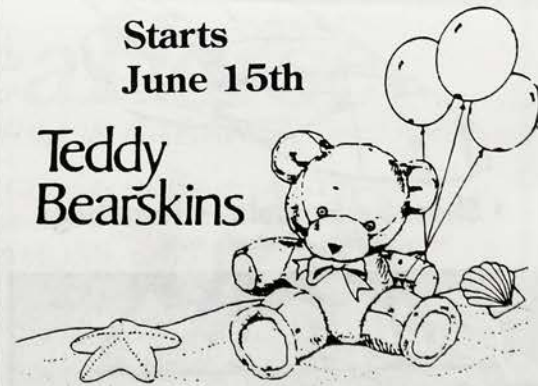
Spring and Summer

Sale

A UNIQUE & EXCITING
CHILDREN'S CLOTHING
STORE

Starts
June 15th

Teddy Bearskins



Wickford
295-0282

Barrington
245-8703

Mystic
536-0902



SOUTH COUNTY

Recreation Guide

(continued from previous page)

of them face fantastic seascapes; others blend with wooded surroundings to form scenes of idyllic splendor. The common characteristic throughout the region — in a two-room B&B or a hundred-room hotel — is good, old-fashioned South County hospitality. The denizens of this very special area have a long tradition — dating back to colonial days, when South County was an important wayfaring stop on the Old Post Road between Boston and New York — of caring for and sharing with tired travelers. Whatever the purse or persuasion, the guest will derive contentment from the fine selection of country inns, ocean hotels, secluded motels, etc. And the nicest part of the arrangement is that all the lodgings come with the peace and quiet, the fresh air and sunshine, the superb scenery of South County.

The hundreds of South County restaurants place a similar premium on hospitality. The region, of course, enjoys widespread acclaim for its succulent seafood, but all styles of cuisine are available, so there's a delicious dish to please any palate. And, the varied fare is well-recognized locally, too — with celebrations honoring such diverse foods as johnnycakes, pasta, quahogs, and strawberries.

If you're looking for something to do beyond the natural delights and historic sites, South County offers a full calendar of exciting events. For the culturally inclined, there are three su-

perb summer theatres, plus a variety of campus creations and Shakespeare productions. An abundance of museums — fine arts, historic, and cultural — exists. A broad range of music festivals and recitals takes place annually — everything from Bach to rock, from country to Cajun, from swing to string quartet.

On a broader scale, South County presents a delightful array of superb spectacles, which will please any member of the family, most especially including the children. There are country fairs and flea markets, seafood festivals and fashion shows, fleet blessings and feast day celebrations, photography contests and ferocious auctions, fireworks displays and fairy tale readings, antique findings and craft festivities, fall foliage tours and Christmas fetes.

South County offers such exciting events as the Big Apple Circus, the Quonset Air Show, Narragansett Indian Pow Wows, the Hot Air Balloon Festival, and oh so many more such grand extravaganzas.

For the sports-minded, there are thrills a-plenty to please even the most ardent seekers of excitement. Beyond the sensational fishing mentioned above, South County's ocean frontage offers spectacular surfing — longboard or bodyboard (many of the sport's premier competitions are held in the area). Of course, Narragansett Bay and Block Island Sound have long been considered prime sailing venues — the sites of such major events as the America's Cup,



the Block Island and Bermuda races, and several trans-Atlantic and round-the-world contests. With its ideal combination of wind, harbors, and shoreline, South County provides ideal opportunities for all seafarers — from intrepid yachtspeople to summer sailors — to exercise nautical prowess in such different disciplines as furious windsurfing and calm catboating.

Ashore, all kinds of activity takes place. Beyond the ever-present availability of tennis and golf (including driving ranges

and the miniature variety) the region furnishes splendid opportunities for running, jogging, hiking, trekking, bicycling, horseback riding, etc. — and competitions are frequently held in these kinds of events. For those with higher aspirations, flying, gliding, sailplaning, skydiving, even bungee-jumping can be accomplished.

South County ranks as a fantasy land for energetic youth as well. Waterslides, carousels, batting cages, bumper boats, and other amusement park diversions delight the kiddies (as

well as the young at heart). On a more prosaic basis, South County's ample open spaces deliver more than adequate room for kite-flying, hide-and-seek, and the other delicious, imagination-expanding pursuits of childhood.

For the sports spectator, South County affords convenient entry to the finest competition. The Boston Bruins, Celtics, and Red Sox generate electricity for major league hockey, basketball, and baseball only 90 minutes away. Closer to home — only 45 minutes from South County — the Pawtucket Red Sox of baseball's International League and the Providence Bruins of hockey's American League represent the number one farm teams of their illustrious Boston parent organizations, and deliver the added excitement of aggressive young players on their way to stardom.

While there is no gambling in South County, those disposed to an occasional game of chance have ample opportunity to test their luck nearby. From the Mashantucket Pequot's multi-million-dollar Foxwoods Casino in Ledyard, Connecticut, only 12 miles west of South County, to the handsome new Foxboro Park Race Track in Foxboro, Massachusetts, less than an hour east of the area's beaches, the world's finest wagering facilities stand close at hand for those seeking temporary diversion from South County's bucolic splendor. In addition to these outlets, the casual bettor cannot find better jai alai than in the Newport fronton only 15 minutes east of South County, or discover superior greyhound racing to that offered by the Lincoln Greyhound Park just 45 minutes north.

Notwithstanding its superlative natural condition, its scenic delights, and historic sites, many people find South County most inviting because of its superior shopping. Discriminating prospective purchasers enjoy singular advantages in conducting South County searches. First, superb and unusual merchandise abounds throughout the area. Second, the shopper makes

(continued on next page)



SPECIALIZING IN WATERFRONT AND WATER VIEW VACATION HOMES

789-3003



REALTOR

1182 BOSTON NECK ROAD, NARRAGANSETT

GREAT SAVINGS!

\$19⁹⁰

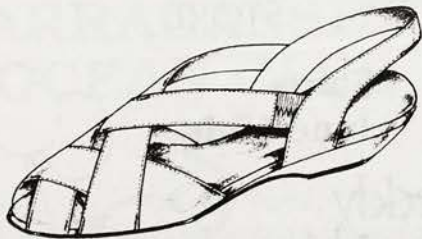
REG. \$25-\$30

\$24⁹⁰

REG. \$30-\$35

\$29⁹⁰

REG. \$35-\$45



• Shoes • Sandals • Handbags

Narrow — Medium — Wide

Eddy's
SHOES

SALT POND SHOPPING CENTER
Narragansett, RI

"The shoes they talk about"

783-6210



A Pt. Judith dock.



1992

NARRAGANSETT ART FESTIVAL

Saturday & Sunday

June 27 - 28, 1992 • 9 am - 5 pm

PUBLIC WELCOME

OVER 100 ARTISTS!



SOUTH COUNTY

Recreation Guide

(continued from previous page) selections guided by unfailingly polite and unobtrusive South County service. Third, the shopping process occurs not only in an area of great natural attractiveness, but also happens in village "Main Streets" often listed on registers of historic significance.

For those seeking variety beyond South County's shoreline splendors and historic excellence, the area provides won-

derful proximity to surrounding attractions. Only five miles to the east — via two bridges with spectacular views of Narragansett Bay — lies the opulence and sophistication of Newport. Only seven miles to the west, the quaintness and sublime simplicity of Mystic Seaport satisfies hundreds of thousands of tourists annually. Sixteen short miles to the north stands the elegant city of Providence — building for building probably America's most historic metropolis, an urbane cen-

ter for the arts and education. These delights are readily available to the South County visitor, who can sleep contentedly (and usually less expensively) in the refreshing quietude of South County, without missing the nearby charms.

Reaching South County remains easy, too. It's only three hours from New York and 90 minutes from Boston. Most South County sites are less than 20 minutes from the state airport, and Amtrak stops in Kingston and Westerly.

A Small Country School



Located in the South County Museum "The School Room" is an area that shows what a small country school might have looked like. The teacher's desk (front) has test books for reading, history and geography, a pair of glasses and an apple for the teacher.

South County List Of Events

JULY AND AUGUST

"Portraits and Places — a New View": 10 a.m.-6 p.m. daily. An exhibit of recently completed work by artists in residence, Mike & Betty Mazzone. Both acrylic and water color mediums are represented. Fantastic Umbrella Factory, Ninigret Park exit, Rte. 1A, Charlestown. 364-6616.

JULY

Cross Mills Public Library: 7 p.m. Every Mon. evening in July. Children's movies shown. 8 p.m. Movies for grown-ups are shown at the library. Rte. 1,

Charlestown. 364-6211.

Fayerweather Craft Guild: 10:30 a.m.-11:30 a.m. Saturday mornings during July there will be a variety of children's art classes at the craft center. Intersection of Rtes. 138 and 108, Kingston. Call the craft center for details. 789-9072.

JUNE 30-JULY 26

"Annie Get Your Gun": Theatre-by-the-Sea, 364 Card's Pond Road, Matunuck. 782-8587.

JULY 1-5 AND 8-12

Westerly's Shakespeare in the Park Presents "Greater Tuna" by Jaston Williams, Joe

Sears, and Ed Howard. A hilarious comedy about life in a small town. See two actors play twenty characters with side-splitting results. Colonial Theatre, 1 Granite Street, Westerly (on the main stage) 596-0810.

JULY 1

Lafayette Band Concert: 7:30 p.m. No. Kingstown town beach band shell, 1/4 mile south of Wickford to the end of Beach Street. 884-6843.

JULY 1-5 AND 7-12

Westerly Shakespeare in the Park Presents "As You Like It": The fair Rosalind, disguised as a boy, flees to the forest of Arden where she finds freedom, folly, and her own true love. Free admission. Wilcox Park is located downtown, adjacent to the Colonial Theatre, 3 Granite Street, Westerly. 596-0810.

JULY 3

Children's Festival: Fri. 9:30 a.m. and 11:30 a.m. Presenting The Bennington Marionettes, with Holiday in OZ. Theatre-by-the-Sea, 364 Card's Pond Road, Matunuck. 782-8587.

Lafayette Band Concert: 7:30 p.m. Town Beach (band shell), end of Beach St. (off Rte. 1A), Wickford, North Kingstown, 884-6843.

JULY 3, 4 AND 5

Block Island Celebrates the Fourth: Fireworks, parade down Water Street, steak fry, chicken barbecue and more. Contact the chamber for further details. 466-2982.

JULY 4

Fireworks Display: Dusk. Sponsored by the South Kingstown Chamber of Commerce, Wakefield Rotary Club and South Kingstown Recreation Commission. Old Mountain Field, Wakefield, South Kingstown, 789-9301.

JULY 4 AND 5

Annual Yard Sale Benefit: 9 a.m.-1 p.m. South County Museum, Canonchet Farm, off Rte. 1A, Narragansett, 783-5400.

JULY 5-AUGUST 28

URI Alton Jones Campus Summer Camp Program: Summer (continued on page 8)



The South County Museum, built in 1933, has helped to keep alive the rural and village heritage of the past two centuries in the Rhode Island area. It's located on Canonchet Farm off Route 1A (Boston Neck Road) across from the Narragansett Town Beach Pavilion.

South County's HomeTown Bank

Full Service Banking • 24-Hour ATMs • Trust Services

THE WASHINGTON TRUST
Company

Member FDIC

Serving South County Since 1800

Westerly • Charlestown • Narragansett • Richmond • Block Island
348-1200 364-4000 782-1000 348-1290 466-7710

GREENE'S

WICKFORD FLOWERS, INC.



All Occasion Florist



Monday-Saturday
9 am-5 pm

170 West Main Street
North Kingstown, RI 02852
(401) 295-5900

There's More At The Beach Than Sand...

SeaHorse
GRILL & CABARET

Think of the SeaHorse Grill before or after the show and on nights you're simply dining out.

Located On The Grounds Of Theatre-By-The-Sea
364 Card's Pond Road (Matunuck Beach Rd. Exit Off Rt. 1), Matunuck, RI
FOR RESERVATIONS, CALL (401) 789-3030

OPEN MAY 1 - OCTOBER 31
LIVE ENTERTAINMENT NIGHTLY
BEGINNING AT 10:30 PM

SOUTH COUNTY

South County

(continued from page 7)

mer camp offers children ages 8-13 an ideal setting to discover and enjoy the beauty of the natural world. Summer teen expeditions are designed for 12-16 year olds who want to explore the scenic areas of R.I. and eastern Conn. Farm and forest day camp is for children ages 5-9 who will spend the day at a new day camp caring for the farm animals, harvesting fresh veggies and touring the Woodvale Farm on hay-ride. Call 397-3304 for a detailed schedule and brochures.

JULY 7

Fayerweather Craft Guild: 10:30 a.m.-11:30 a.m. Demonstrations and workshops are held on Tuesdays. Public is invited to attend. Marilyn Ainsworth of MJA Enterprises will demonstrate the making of a porcelain doll from start to finish and will have a class sign up sheet for her upcoming doll classes. Intersection of Rtes. 138 and 108, Kingston. 789-9072.

JULY 8

Lafayette Band Concert: 7:30 p.m. Town Beach (band shell) end of Beach St. (off Rte. 1A), Wickford, North Kingstown, 884-6843.

JULY 10

Children's Festival: Fri. 9:30

a.m. and 11:30 a.m. Presenting Landis and Company's Magic, Merry Pranks and Mischief. Theatre-by-the-Sea, 364 Card's Pond Road, Matunuck. 782-8587.

JULY 10, 11 AND 12

23rd South County Heritage Festival: Fri. 5 p.m.-midnight; Sat. 10 a.m.-11 p.m.; Sun. 10 a.m.-5 p.m. Free admission. Featuring live bands, lobsters, chowder, clam cakes, arts and crafts, and children's events. Marina Park, U.S. Rte. 1, Wakefield, 783-8531, 277-2312.

JULY 11

Rhode Island Philharmonic Concert: 7 p.m. Narragansett Pier Pavilion, Narragansett Town Beach, Ocean Road, Narragansett. Call Chamber to confirm date and time. 783-7121.

Block Island Arts & Crafts Guild Fair: 10 a.m.-4 p.m. Esta's Park, Water Street. (rain date—July 12)

Cross Mills Public Library: 10 a.m. Family fun specials with guest performers at the library, Rte. 1, Charlestown. 364-6211.

JULY 11 AND 12

Wickford Art Festival: 10 a.m.-dusk. One of the East Coast's oldest, largest and best, featuring paintings, photographs and sculptures by over 250 artists. Sidewalks of Wickford, North Kingstown, 295-5566.

11th Annual Snug Harbor Shark Tournament: Quest for prize winning sharks of all breeds. The event includes numerous dockside activities. For info or entry forms write: Tournament Enterprises, Dept. SH, P.O. Box 803, Greenville, R.I. 02828. Snug Harbor Marina, 783-7766.

JULY 12

Fisherville Brook Wildlife Refuge: 10 a.m.-noon. "Butterfly Walk." Call Audubon Soci-

ety for confirmation of programs, 231-6444. Refuge is located on Pardon Joslin Road, Exeter.

Truck & Car Flea Market: 7 a.m.-4 p.m. Crandall 1665 Homestead, Rte. 3, Pound Road, Westerly. 322-7590.

JULY 12-30

Wickford Art Association: Tues.-Fri. and Sun., 1-4 p.m. 30th Anniversary of Wickford Art Association. Presentation of work by original Art Assoc.

members and past presidents. 36 Beach St., North Kingstown. 294-6840.

JULY 14

Block Island Bastille Day Race: 2 p.m. Weldon's Way, Block Island. Call Chamber for details. 466-2982.

Fayerweather Craft Guild: 10:30 a.m.-11:30 a.m. Joan Grinnell, a popular needle artist who creates and designs all her own patterns will also have a class after her demonstration from noon-2 p.m. in making a pulled thread ornament. Intersection of Rtes. 138 and 108, Kingston. 789-9072.

JULY 14-19

Big Apple Circus: Sponsored by the Charlestown Chamber of Commerce. A one-ring traveling circus. This year's theme "Greetings from Coney Island." Ninigret Park exit, off Rte. 1, Charlestown. 364-0890.

JULY 15

South County Art Association: 7-9 p.m. "The Real Thing," a members' invitational show consisting of realistic works of art. Helme House, 2587 Kingstown Road, Kingston. 783-2195.

Lafayette Band Concert: 7:30 p.m., Chapel of St. John the Divine, Willet Rd., and Church Way, Saunterstown. 884-6843.

JULY 16

Westerly Band Summer Concert: 7:30 p.m. Wilcox Park, Westerly. 596-0810.

JULY 17 AND 18

Westerly Hometown Festival: Fri. 9 a.m.-8 p.m., Sat. 9 a.m.-4 p.m. Crafts and many activities. Westerly Public Library. Call for more details. 596-4623.

JULY 17-18, 22-26, 29-31

Westerly's Shakespeare in the Park Presents, "Rumors," by Neil Simon. A riotous farce by Broadway's favorite playwright. Four couples whirl through a dinner party gone wrong (on the main stage) Colonial Theatre, 1 Granite Street, Westerly. 596-0810.



Marc is preparing bait for a trap with pogies. He fishes to help pay for his education at URI.

JULY 17

Children's Festival: Fri., 9:30 a.m. and 11:30 a.m. Presenting The Gizmo Guys. Theatre-by-the-Sea, 346 Card's Pond Road, Matunuck. 782-8587.

JULY 18

URI Bay Campus Classes/Tall Ships Cruises: 8:30-11:30, noon-3 p.m., 3:30-6:30 p.m. Join a three-hour cruise aboard the URI research vessel Laurie Lee to Newport Harbor and gain a water's eye view of sailing ships from around the world. \$34. Call to register or for more information 792-6211.

Annual Country Fair & Antique Show: Strawberry Hill, Rte. 1A, Charlestown. Sponsored by the Charlestown Historical Society. 364-6211.

Library Book Sale: 9 a.m.-2 p.m. Cross Mills Library, Rte. 1A, Charlestown. 364-6211.

JULY 18 AND 19

Southern Rhode Island 4-H Fair: Washington County Fairgrounds, Richmond Townhouse Road, Rte. 112, Richmond. 322-7590.

JULY 21

Fayerweather Craft Guild: 10:30 a.m.-11:30 a.m. Grapevine basket maker Gayle O'Donnell will share her love of natural vine baskets and following her demonstration will have a class to make a grapevine basket. Intersection of Rtes. 138 and 108, Kingston. 789-9072.

JULY 22

Lafayette Band Concert: 7:30 p.m. Town Beach (band shell), Wickford, end of Beach St., North Kingstown. 884-6843.

JULY 24

Children's Festival: Fri. 9:30 a.m. and 11:30 a.m. Presenting Wendy Brackman's Wacky Hats. Theatre-by-the-Sea, 364 Card's Pond Road, Matunuck. 782-8578.

10 Mile AAU Road Race: 6 p.m. Registered New England Athletic Conference Runners. Sponsored by the Narragansett Lion's Club. For application, write to: Director P.O. Box 186, Narragansett, R.I. 02882. Narragansett High School, 245 So. Pier Rd., Narragansett. 789-9491/783-7121.

JULY 24 AND 25

3rd Annual Seafood Festival: Festival features crafts and a wide variety of seafood booths. Sponsored by the Lion's Club. Veteran's Memorial Park, Ocean Road, Narragansett. 789-9491.

Kingston Free Library Annual Book Sale: Fri. 10-6 p.m., Sat. 9-12 Rte. 138, Kingston Village, South Kingstown. 783-8254.

JULY 25

Wild Plant Walk: 1 p.m. South County Museum, Canonchet Farm, off Boston Neck Road (Rte 1A), (continued on next page)

WATERFRONT Properties
REAL ESTATE

SUMMER RENTALS
364-3075
364-9127

2239 Matunuck Schoolhouse Road
P.O. Box 1400, Charlestown, RI 02813

WICKFORD ART ASSOCIATION GALLERY

36 Beach Street, North Kingstown • (401) 294-6840
Hours: Tues. - Fri., Sun. 1 pm - 4 pm, Fri. eves. 6:30 pm - 8:30 pm
Located 1/4 mi. south of Wickford Village off Route 1A near the town beach.

June 28 - July 9 — Selected exhibit of all media by seniors 50+ and children 6-14.

Six works of art will be raffled on July 12 at 3 pm. Buy your tickets for just \$1 each at the gallery on Tues.-Fri. & Sun. 1-4 or at the Wickford Art Festival July 11, 10 am-dusk & July 12 10 am-3pm

Durkin Cottages

"We're Not Just Cottages Anymore"

BEST IN

**BEACH HOUSES • SALES AND RENTALS
CONDOMINIUMS • HOUSES • APARTMENTS**

Largest Selection in Scarborough ~ Point Judith
815 Point Judith Road • Narragansett, RI 02882
OVER 30 YEARS EXPERIENCE
401-789-6659

**The 21st Annual
NORTH STONINGTON, CT
ANTIQUES SHOW**

**Saturday, June 27, 1992 10-5
Sunday, June 28, 1992 10-5**

Inside the Elementary School, Route 2
North Stonington, CT • North of Exit 92 Off I-95

55 SELECTED EXHIBITORS
HOME-MADE MEALS AND REFRESHMENTS

Donation: \$3 **PSMA** \$2.50 with ad

To benefit the North Stonington Historical Society CT#M0678



SOUTH COUNTY

South County

(continued from previous page)

Narragansett. 783-5400.

Blessing of the Fleet: 12 noon. Clergy will extend blessings as decorated pleasure and commercial boats and charter crafts join in the event. Sponsored by the Narragansett Lions. Galilee, Narragansett, 783-9491/783-7121.

28th Annual Barbershop Quartet Concert on Block Island: 8 p.m. Block Island School Gym, High Street. An Afterglow Party immediately following. 466-2982.

Cross Mills Public Library: 10 a.m. Family fun specials with guest performers at the library, Rte. 1, Charlestown. 364-6211.

JULY 25 AND 26

3rd Annual New England Reggae Festival: 10 a.m.—midnight. Featuring International and local reggae groups, natural foods, crafts, cultural books and clothing, and horseback riding. Stepping Stone Ranch, Escoheag Hill Rd., Escoheag, 397-3725, 800-556-2484.

JULY 27-30

Block Island Billfish Tournament: Block Island Boat Basin. 466-2982.

July 28-August 23

"South Pacific": Theatre-by-the-Sea, 364 Card's Pond Road, Matunuck, 782-8587.

JULY 28

Fayerweather Craft Guild: Joan Lamont will give a hands-on demonstration in making crafts out of "paper twist." Everyone attending will go home with a finished project. Intersection of Rtes. 138 and 108,

South County Attractions

BLOCK ISLAND

Beacon Hill Its stone tower, 210' above sea level, is visible from almost any part of the island. It was designed in 1925 as a memorial to the Island's seamen. Admire the tower from a distance, as it sits on private property.

Block Island Historical Society Permanent and special exhibits. Corner of Old Town Road and Ocean Avenue. Open: July-Oct., 10 a.m.-4 p.m. (closed Tuesdays); and by appointment. 466-2481.

Block Island State Beach 1,000 feet of glorious, clean, sandy beach with a gradual drop, little undertow, and an attractive new pavilion.

Clayhead Nature Trail (The Maze) The Trail, located off Corn Neck Road, leads to cliffs and then heads north until it eventually arrives at Settlers' Rock at Sandy Point. En route, other trails, which were formerly known as the Maze, branch off, leading to scenic views and are a walker's and nature lover's delight.

Crescent Beach Along this wide, sandy strip is a magnificent beach, unequalled elsewhere.

Settlers' Rock Erected in 1911 by the descendants of the original settlers, this monument marks the historic landing site of the brave souls who first colonized Block Island in 1661.

Kingston. 789-9072.

JULY 29

Lafayette Band Concert: 7:30 p.m. No. Kingstown Town Beach Band shell, 1/4 mile south of Wickford to the end of Beach Street. 884-6843.

JULY 28-AUGUST 9

Westerly's Shakespeare in the Park Presents, "The Tempest" by William Shakespeare: 7:30 p.m. A magical tale of romance and hope for a grave new world, with Earle Hyman as Prospero. Outdoors in Wilcox Park, Westerly. 596-0810.

JULY 31

Children's Festival: Fri. 9:30 a.m. and 11:30 a.m. Presenting Rock n' Roll fun for kids. Theatre-by-the-Sea, 364 Card's Pond Road, Matunuck. 782-8587.

JULY 31-AUGUST 2

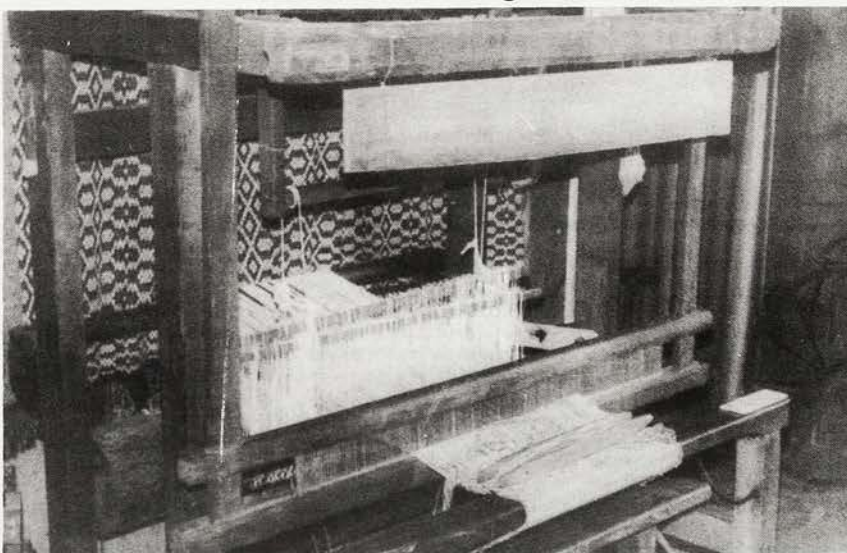
14th Annual South County Hot Balloon Festival: Fri. 6 p.m.—8 p.m., Sat. and Sun. 6:30 a.m.—8 p.m. 30 balloons and ultralites, kites, gyrocopters, radio-controlled model airplanes. Blue-grass music festival, 100 craft and food booths, antique autos, karate and gymnastics. Sponsored by the South Kingstown Rotary Club. Athletic Field, University of Rhode Island, Route 138, Kingston, 783-1770.

JULY 31, AUGUST 1 AND 2

15th Annual Narragansett Heritage Days: 10 a.m.—dusk. "URI Centennial Year." Features nightly entertainment, crafts, food booths, etc. Sponsored by the Narragansett Chamber of Commerce. Veterans Memorial Park, Narragansett. 783-7121.

Oceanwest Theater New Harbor: Open June-September. 466-2971.

A Historic Weaving Machine



This Weaver Rose draft (pattern) board can be found at the South County Museum.

"Annie Get Your Gun" At Theatre-By-The-Sea

FourQuest Entertainment, Inc. will present "Annie Get Your Gun," the second musical of the season, July 3. The musical will begin preview performances on June 30.

"Annie Get Your Gun," produced by Rodgers and Hammerstein, with music and lyrics by Irving Berlin, opened at the Imperial Theatre in New York, May 16, 1946, to great critical acclaim. Berlin had outdone himself; every song a hit. "Berlin songs are a fascinating web of wit and melody," wrote Howard Barnes, of the *Tribune*. Vernon Rice, the *NY Post*, raved, "overflowing with eye-filling and ear-filling goodness... will probably run for a lifetime." Ethel Merman, as Annie was the toast of Broadway.

This song-studded musical boasts such hits as: "There's

No Business Like Show Business," "Anything You Can Do I Can Do Better," "They Say That Falling In Love Is Wonderful," and "You Can't Get a Man With a Gun."

The Theatre-by-the-Sea production will star Virginia McMath, as Annie, and Christopher Innvar, as Frank Butler. Chet Walker, who won the Swedish "Tony" for his pro-

duction of "Annie Get Your Gun," will direct. Scenic designer David Sumner and costume designer Deborah Newhall bring the wild west at its spectacular best to the Matunuck stage.

"Annie Get Your Gun" will run through July 26. Performances Tuesday through Sunday. Tickets from \$17 to \$24. For tickets call (401) 782-8587.

Antipasto's

Super Salad Bar, Fresh Seafood & Italian Cuisine

FEATURING NIGHTLY SPECIALS including

Fresh Swordfish • Calamari Fritti • 2 Types of Pesto
5 Styles of Pasta • Fresh Proviemi Veal • Shrimp Dishes

Cocktail Lounge Open 12 noon - 1 am Daily • Entertainment on Saturdays
Summer Hours: Serving lunch and dinner Monday-Thursday 11:30 am - 9:30 pm
Friday 11:30 am - 10 pm • Saturday 5 pm - 10 pm • Sunday 2 pm - 8 pm

Mariner Square, Narragansett • 789-5300

QUIDNESSETT COUNTRY CLUB

OVERLOOKING NARRAGANSETT BAY

"The Ultimate Experience in
Wedding Ceremonies & Receptions"

Bar/Bat Mitzvah Celebrations • Anniversary Parties



You are invited...
to tour our facilities.
Appointments daily including
Saturdays, Sundays & evenings.
Please call Carole or Lorraine.
884-1100

THE FOREMOST IN BANQUET FACILITIES

Particular care is taken in the planning of your very special day.
Food is expertly prepared and offered with the finest of service.

QUIDNESSETT COUNTRY CLUB

NORTH QUIDNESSETT ROAD, NORTH KINGSTOWN, RHODE ISLAND 884-1100



NEWPORT



Touro Synagogue: A National Landmark

by Kathy Cohen
Herald Associate Editor

Of the hundreds of historic sites in Newport, Rhode Island, the most significant landmark for local or vacationing Jews is Touro Synagogue, a national historic site, located at 85 Touro Street.

After embarking on a tour led by Rabbi Chaim Shapiro, spiritual leader of Touro Synagogue, it was clear how this, the oldest synagogue in the United States, played such an important role in our history. On the tour with me was a group associated with the Smithsonian Museum of New York City.

Roger Williams, the founder of R.I., believed in religious freedom and it was his attitude towards religion that saw him banished from Puritain Massachusetts.

The rabbi spoke of the year 1492 as marking the end of the "Golden Age of Spain." It was then that Spain's King Ferdinand and Queen Isabella concocted a new law which ordered the Jews of Spain to

either convert to Catholicism or leave on the 9th day of the Jewish month of Adar (March 31, 1490).

That day boats brought those Sephardic Jews to the Mediterranean islands. Today, 300,000 Jews remain in Spain, all converts. Every September small groups of Sephardic Jews found secret hideaways to have short services.

The Sephardic Jews who converted to Catholicism to escape persecution were called Marranos or "pigs" by non-Jews. Those Marranos along with Jews of Portugal were driven from Iberia and now reside elsewhere in Europe or South America and the West Indies. But a group of these Sephardim arrived in R.I. and started the first Jewish community in Newport around 1658. When they found that they were accepted as Jews, the Marranos started a congregation according to their traditional values.

Over a century later, after more Sephardim arrived followed by Ashkenazim Jews from Central and Eastern Europe, the enlarged congregation found they needed a place to worship. They had been conducting services at each other's homes.

With a generous donation from New York City's Congregation Shearith Israel (Remnant of Israel), the only one to have preceded Newport's congregation in the United States, and the other congregations in



Touro Synagogue, Newport

Jamaica, Curacao, Surinam and London, the Newport Jews were able to hire an American architect, Peter Harrison.

Ground was broken in 1759, but was not completed until about four years later when the synagogue was finally prepared for dedication on December 2, 1763. Soon afterwards the congregation named the synagogue Yeshuat Israel (Salvation of Israel).

Now the devout congregants could devote their attention to leading religious lives, observing holy days with ancient ceremony. This was a time when the Newport Jewish community thrived and flourished.

The community was almost disintegrated when the American Revolution began and the British arrived at Newport Harbor. When the British occupied Newport, most people left including Christians and Jews. This is when the Newport Jewish community declined, forcing the synagogue to close at times. Even after the war, when things picked up and the people were rebuilding their town, the Jews again drifted away.

It was at this point that the

famous George Washington letter arrived with the words, "...Which to bigotry gives no sanction, persecution no assistance—but generously affords to All liberty of conscience, and immunities of Citizenship..."

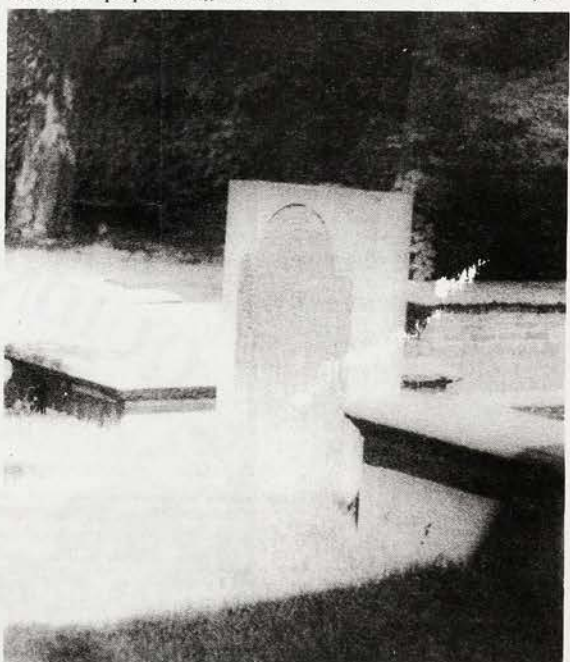
In the early 1820's the synagogue was reopened and re-named Congregation Jesuat Israel.

The building is named after Abraham Touro, who generously donated \$10,000 for the preservation of the synagogue.

Today, The Society of Friends of Touro Synagogue National Historic Shrine, Inc. assists in perpetuating Touro

Synagogue as a symbol of religious liberty. Through its restoration committee, the society has gone far toward restoring the site to its 18th-century appearance. The Synagogue continues as the place of worship for Congregation Jesuat Israel.

From late June until Labor Day, Touro Synagogue is open to visitors from 10am to 5pm Sunday through Thursday and from 10am to 3pm on Fridays. Half-hour tours are available during visiting hours. From the synagogue it's only a short walk up Touro Street to the old burial ground called, "The Jewish Cemetery at Newport." For infor-



Touro Synagogue's cemetery plot

NEWPORT SAVINGS ISLAND TRUST

Two Locations Now Offering Convenient ATM Banking

100 Bellevue Ave., Newport, RI 847-5500
1342 W. Main Rd. Middletown, RI 847-5500

Next to Stop & Shop

NEWPORT 24

YANKEE 24 **CIRRUS**

Member FDIC

RHEA'S FAMILY RESTAURANT
Serving Lunch & Dinner

House Specialties
Seafood • Steaks • Ribs
Cocktails • Beer • Wine

Open 7 Days
841-5560

120 West Main Road, Middletown

Escape to the sea Dine and unwind...
AT NEWPORT'S EASTON BEACH

The Greenhouse
INN & RESTAURANT

Inn: 401-846-0310
Restaurant: 401-846-0911
Outside RI: 1-800-786-0310

Luncheon • Dinner
Sunday Brunch
Cocktails • Lodging

Memorial Boulevard • NEWPORT • AMPLE FREE PARKING

Ritrex Camera

SALE AND REPAIR OF PHOTOGRAPHIC EQUIPMENT
OLYMPUS • CANON

Complete Photographic Services
Fast Film Developing
Camera Repair

322 Swan's Wharf Row
Brick Market Place, Newport, RI
(401) 846-8294

WSPORTS
Island Windsurfing

BICYCLE and WATER SPORTS RENTALS
ACTIVE FASHIONS • FITNESS EQUIPMENT
CERTIFIED WINDSURFING SCHOOL

Located near Newport's Beautiful First Beach, Island Windsurfing is your one-stop shop for sports, fun and fashions. Bring the whole family and visit our awesome "Surf Tower" for a view of the Cliff Walk and the Atlantic Ocean. We are easy to get to with plenty of free parking. Ask about our windsurfing school, bicycle tours, Rollerblade in line skates and other activities.

86 Aquidneck Ave., Middletown, RI 02840 • 401-846-4421
or out of state 1-800-BOARD-HI (that's 262-7344)

Sea Shai

Japanese and Korean Cuisine

- Traditional Japanese/Korean Cooking with Delicate Flavor
- Lunch Specials
- Serene Atmosphere
- Ample Free Parking

OPEN 7 DAYS
Lunch 11:30 am - 2:30 pm
Dinner 5:00 pm - 10:00 pm
Restaurant • Sushi Bar • Grille

Aquidneck Green 1B
747 Aquidneck Avenue
Middletown, RI 02840
849-5180

mation, write to: Touro Synagogue, 85 Touro Street, Newport RI 02840. Phone: (401) 847-4794.



NEWPORT

Newport Music Festival Tickets On Sale

General Director Mark P. Malkovich III has announced that tickets are now on sale at the box office for the 1992 Newport Music Festival, July 5-19. Over 40 American and international artists will perform 46 chamber music concerts, three and four per day, in the magnificent mansions of Newport. The Yamaha Corporation of America continues as the major Festival corporate sponsor.

Opening Night, Sunday, July 5, features the American debut of Russian violinist Ilya Kaler, gold medalist of the three most prestigious violin competitions in the world, namely the Tchaikovsky, Sibelius and Paganini. Italian pianist Pietro De Maria, a student of famed pianist Maria Tipo, will be presented in his North American recital debut July 7, with a program of Bach, Brahms and Rachmaninoff. Russian pianist Boris Beresovsky, the 1990 Tchaikovsky Competition gold medalist will also make his Newport recital debut, July 17 at Rosecliff. A special gala dinner is also offered, beginning at 6:30 pm. Phone the Festival office for your personal invitation. The Closing Gala, July 19, showcases the genius of another superb Russian, pianist Grigory Sokolov, who has not appeared in America in many years. Mr. Sokolov won the Tchaikovsky Competition in 1966, at the age of 16, making him the youngest medalist in its history.

A special treat is in store for

Gershwin lovers on Sunday, July 12, when the Festival presents the ever-popular pianist/vocalist Michael Feinstein. Tickets to this fund-raising event are \$40 and include an apres-concert champagne reception.

Afternoon concerts will be devoted to the music of Robert Schumann in a series of fourteen "Schumanns." Every piano piece, including many that are unknown, the piano trios, the string quartets, violin sonatas and the piano quartet, will be presented. Over a dozen Festival pianists will participate.

Other special events include a box-lunch concert at Hammersmith Farm July 7 and a special children's concert under a tent at Rosecliff July 18, featuring Schumann's "43 Piano Pieces for the Young."

The box-office is located at 45 Valley Road in Middletown and is open from 10-6 Monday through Saturday. Telephone orders using MasterCard or VISA are accepted at (401) 849-0700. Ticket prices are \$20 for morning and afternoon concerts and \$25 for evening concerts. Tickets are also available at the Newport Gateway Center, 23 America's Cup Avenue, from 9-5 daily. For brochure requests and further information, phone the Festival business office at (401) 846-1133, or write P.O. Box 3300, Newport, R.I. 02840-0993. For Newport County tourist information phone toll-free (800) 326-6030.

America's Cup Greats Return To Newport For Wall Street Challenge Cup

The Wall Street Challenge Cup (June 26-28) will draw America's Cup greats back to Newport for a unique revival of competition in vintage 12-Meters. This regatta will draw Cup talent from all eras, who will race side-by-side with sailors from leading American corporations. This fund-raising event is to benefit Shake-A-Leg — a nonprofit organization that teaches self-sufficiency skills to the disabled community.

"The Challenge Cup," says Shake-A-Leg's Director of Development and Sailing Robie Pierce, "is a once-in-a-lifetime opportunity to bring these legendary boats and these legendary sailors back to the racecourse. Amateur sailors will have a chance to be a part of it all, racing alongside the top players in the sport. But more importantly, the Challenge Cup gives corporate America a chance to open new doors for handicap individuals."

Some Cup sailors will be fresh from San Diego — such as John Bertrand, a key player in Dennis Conner's "Stars & Stripes" afterguard. But the Wall Street Challenge Cup (WSCC) will also bring longtime heroes back to the racecourse. Among these sailors will be Ted Hood, the man whose last appearance on the Cup racecourse was at the helm of "Courageous" in 1974. Teams representing leading

American corporations will race with a core of professional America's Cup crew. Challenges are mounted by Bear Stearns & Co., Morgan Stanley & Co., and Prudential Securities. A fourth team will represent Shake-A-Leg.

Each team will raise a minimum of \$25,000 to re-live a slice of America's Cup history. Two days of racing are planned, along with other harborside gatherings. On Saturday evening, Dr. Ronald Parker will honor participating syndicates and corporate sponsors with a dinner at his Newport mansion, "The Orchard," which overlooks the Atlantic Ocean.

The WSCC is in its inaugural year, but the ingredients are in place to make this an annual challenge. "We are working with the boats and the harbor facilities," says Pierce, "that built the America's Cup into the premier event of worldwide yachting. It is our hope to bring this tradition back to Newport each year with the Wall Street Challenge Cup."

The WSCC is the brainchild of Robie Pierce, a lifelong sailor who has been the major force behind the Shake-A-Leg sailing program.

Founded in 1982, Shake-A-Leg's goal is to help individuals who have sustained spinal cord or other neurologic impairments reach maximum physical, func-

tional, and emotional potential.

In 1986, an adaptive sailing facility was established with Freedom/Independence 20s, a 20-foot boat specially designed to be sailed by two handicapped individuals. Sailing facilities are now operating in Newport and Miami (FL), with hopes of soon establishing a branch in San Diego (CA).

The WSCC Teams will be housed at the Doubletree Newport Islander. Other contributing sponsors include American Airlines, Brainstorm, Inc., Pussers Rum, Rhode Island State Yachting Commission, Texaco, and Viking Tours.

For more information, contact Robie Pierce at Shake-A-Leg.



Ben & Jerry's Newport Folk Festival

For fans of authentic American music, Ben & Jerry's 1992 Newport Folk Festival offers a big-name lineup embracing decades of excellence, from Joan Baez to The Band to Suzanne Vega. It's an array that ranges from classic folk to vibrant folk rock to evocative contemporary ballads.

The open-air festival also features dozens of additional artists performing over the weekend of August 8 and 9 in Fort Adams State Park in Newport, R.I. The eclectic assemblage includes Loudon Wainwright III, who wrote the all-time classic "Dead Skunk in the Middle of the Road," and Michelle Shocked, the Texas singer who represents the next wave of folk stardom.

Drawing on the bluegrass and backporch-pickin' traditions of her native East Texas, Michele Shocked writes and sings songs that reflect a wide range of influences: Leadbelly, Big Bill Broonzy, Fats Domino, Professor Longhair, Hoagy Carmichael, Jerry Lee Lewis, even African palm wine music. The result is an engaging acoustical style with a cutting edge of social commentary. She performs Saturday.

Saturday, August 8 — Suzanne Vega, Bruce Cockburn, The Band, Michelle Shocked, Cris Williamson, Yomo Toro, David Wilcox, Patty Larkin, Pat Donohue
Sunday, August 9 — Four

Voices in Harmony: Joan Baez, Mary-Chapin Carpenter, Amy Ray and Emily Saliers; Mary-Chapin Carpenter, Beausoleil, Loudon Wainwright, Nashville Bluegrass Band, Fairfield Four, Rachel Polisher, Pat Donohue.

The festival is sponsored by Ben & Jerry's, a super premium ice cream maker. Tickets are \$37.50 for a two-day ticket, sold only in advance until July 15; \$23 per day in advance, \$25 per day during the festival and \$10 for children under 12 at all times.

Tickets are on sale at all Ticketmaster outlets or may be charged by phone: MA (617) 931-2000; RI (401) 331-2211; CT (203)

624-0033; NY (212) 307-7171; Long Island (516) 888-9000; and NJ (201) 507-8900. To purchase tickets by mail or to receive additional information, write to: Ben & Jerry's Newport Folk Festival, P.O. Box 1221, Newport, RI 02840. Please include a stamped, self-addressed envelope and a \$3 handling charge per order. Tickets also may be purchased at the festival office at 670 Thames Street in Newport. For more information, call (401) 847-3700.

The official host hotel of the 1992 Ben & Jerry's Newport Folk Festival is the Newport Harbor Hotel and Marina. For the best in lodging, call 1-800-955-2558.

Present this coupon for **\$1.00 OFF** of our handwhipped fudge of 1 lb. or more

HANDWHIPPED FUDGE

COUNTRY KETTLE FUDGE

359 THAMES ST. NEWPORT 849-2228 VISA-MC

THE PERFECT GIFT OF GOOD TASTE FROM NEWPORT

PLEASANT SURPRISE

contemporary retail

Summer Hours: Open 7 Days a Week, 9 am - 10 pm
OPEN YEAR ROUND

121 Brick Market Place Newport, RI 401-846-1202

BED and BREAKFAST AT "Hedgegate"

Host & Hostess
FRAN & ANNE PARENTE
65 Aquidneck Ave.
Middletown, RI 02840

Walk to Beach

Rte. 138A
401-846-3906
Office
849-4109
Guests

Bring Your Own Bottle To

Muriel's
RESTAURANT
Spring & Thoro
Newport

Enjoy
Breakfast Lunch Dinner
Sunday Brunch
with
"Coast to Coast"
AWARD WINNING
SEAFOOD CHOWDER
849-7780

Crystal Cove

CRYSTAL, GIFTS, JEWELRY & STEMWARE

Swarovski Silver Crystal • Goebel Miniatures
Porcelain Figurines by Boehm, Kaiser, Hummel

113 Brick Market Place • Newport, Rhode Island
(401) 847-6017
Open Daily

Miniature Occasions and Dolls

480 Thames St. • Newport, RI 02840
(401) 849-5440 • Outside RI: 1-800-358-4285
Fax (401) 849-7575

Handmade Porcelain Dolls
Doll Making Classes and Repairs
Miniatures and Doll Houses
Japanese Antique Dolls

Thames Extension Parking 480 S. Baptist

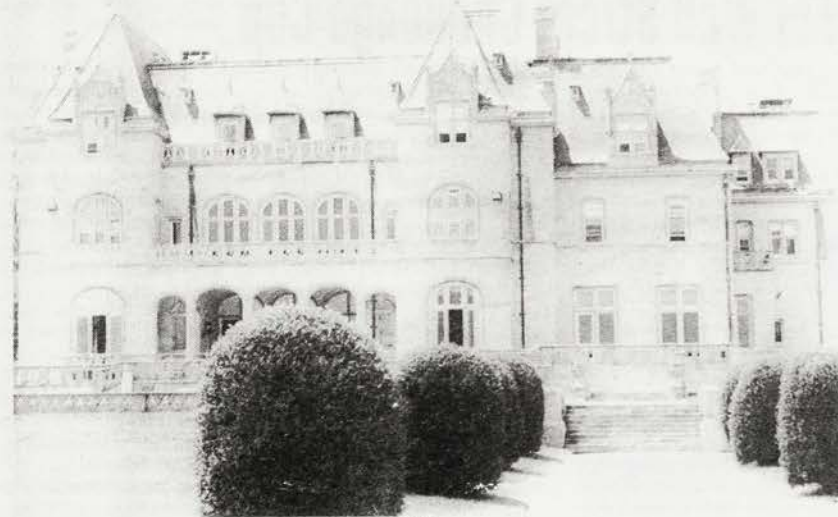
VISA • MASTERCARD • AMERICAN EXPRESS



NEWPORT



Historic



"The Castle," Narragansett

Newport Art Museum To Celebrate 80th Anniversary — July 3 Gala Planned

The Newport Art Museum will celebrate its 80th anniversary this summer with a remarkable 80-day-long portrait exhibition and modern furniture show. The exhibitions will open with a champagne gala on Friday evening, July 3, and close in mid-September.

The portrait exhibition, titled "Newportraits," Three Centuries of Newport's People by Pre-eminent Portrait Artists," will feature works by major portrait artists and their Newport subjects, spanning a period of nearly 300 years. More than 200 works will be included highlighting such renowned and diverse artist/subject pairs as Joseph Blackburn/Captain John Brown, Gilbert Stuart/Jacob Rodriguez Rivera, Paul-Cesar Helleu/Mrs. Gertrude Vanderbilt, Diego Rivera/Princess Von Furstenberg and Andy Warhol/Jacqueline Kennedy Onassis. In addition to oil paintings, the exhibition will feature watercolors, drawings, sculpture, pastels, miniatures and silhouettes. The portraits will be drawn from the museum's permanent collection and will be on loan from a vast array of private collections and institutions.

The furniture exhibition, to be held July 3 and running for 80 days concurrent with the portrait show, is titled "Nine Rhode Island Masters of Modern Furniture." Many of America's premier furniture designers have come from the Newport area beginning in the Colonial Era with the well-known names of Townsend and Goddard. Remarkably, that tradition continues to this day. In the new contemporary furniture exhibition, the Newport Art Museum will highlight the furniture designs of nine master woodworkers, all nationally renowned, and all from the Rhode Island area. The exhibition will include works by Tage Frid who taught most of the other exhibitors when chairman of the Woodworking Department of the Rhode Island School of Design. The other master exhibitors include John Dunnigan, Hank Gilpin, John Marcoux, Alphonse Mattia, Timothy Philbrick, Roseanne Somerson and Seth Stem.

The portrait and modern furniture exhibitions will debut with a champagne gala celebrating the 80th anniversary of the Newport Art Museum on Friday evening, July 3, at 6 p.m.

For more information contact Ms. Paula Sharp: (401) 848-8200. Admission to the Newport Art Museum is Adults: \$6; Children: 6-14; \$3.50; Children under 6: Free; Seniors: \$3.50; College Students before 11 a.m.: \$2.

On June 28, 1912, the Art Association of Newport was incorporated and in July held its first exhibition. Among the founders were several notable Newport artists and a dedicated group of art patrons led by writer Maud Howe Elliott. In 1916, the Art Association moved to its present location in the Griswold House, the architecturally significant Richard Morris Hunt stick-style building on Bellevue Avenue. In 1920, the Cushing Gallery was erected on the same property in memoriam to one of the association's founders, artist Howard G. Cushing. The Art Association of Newport changed its name to the Newport Art Museum in 1984. In 1991, the museum restored the Cushing Memorial Gallery and added a new wing. Today the Newport Art Museum is recognized as an emerging regional museum of increasing importance.

Rhode Island Tourism Visitor's Guides

The 1992 Rhode Island Visitor's Guide is now available from the Rhode Island Tourism Division. The Visitor's Guide, which is published annually, is the division's most comprehensive and detailed source of visitor information.

From Newport's famous gilded age mansions to Providence's historic "Mile of History," to the spectacular beaches of South County, the Visitor's Guide provides detailed information on Rhode Island's many attractions, accommodations and diverse leisure activities. It serves as an indispensable resource for the prospective Rhode Island tourist.

The Rhode Island Visitor's Guide features a detailed listing of events which take place throughout Rhode Island from April through December. Highlights for 1992 include Providence's June Festival of Historic Houses, the nation's oldest Fourth of July Parade in Bristol, Newport's Classical, Jazz and Folk Music Festivals, a Weekend of Coaching in Newport, and the Charlestown Sea-

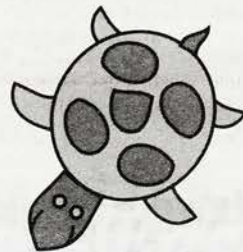
food Festival — just a sampling of some of the state's most popular events.

Also coming in 1992 are the Tall Ships and the Spanish Caravels, replicas of Christopher Columbus's ships. World class sporting events include professional grass tennis tournaments at the International Tennis Hall of Fame, international boat shows and deep-sea fishing tournaments. Newport, recognized as the "Sailing Capital of the World," hosts five full months of regattas.

The Visitor's Guide also lists a full range of Rhode Island accommodations. From contemporary hotels and motels to charming inns and seaside bed and breakfasts, there is certain to be something to meet everyone's needs.

To obtain a free 1992 Rhode Island Visitor's Guide and Rhode Island vacation kit, call toll-free (800) 556-2484 from the U.S. and Canada or write the Rhode Island Tourism Division, Seven Jackson Walkway, Providence, Rhode Island 02903.

Editorial and Classified Deadlines are Monday, 4:00 pm for Thursday's Paper.



99¢ Classic Sundae

Present this coupon

At the following Newport Creamery locations ONLY!
 RECEIVE A CLASSIC SUNDAE FOR ONLY 99¢!
 Middletown
 208 West Main Road 846-2767
 Newport
 181 Bellevue Avenue 846-5332
 49 Long Wharf Mall 849-8409



Rhode Island's Largest Architectural Dealer



Fardvark Antiques

475 1/2 Thames Street
 Newport, RI 02840

- Lighting Fixtures
- Street Lights
- Columns & Capitals
- Driveway Gates
- Fountains
- Statuary in All Media

We Buy Complete Estates — Interior & Exterior
 Prop Rentals — Delivered & Setup

Arthur Grover, Urban Archeologist Open Daily 10-9
 1-800-446-1052 (outside RI) 401-849-7233

Children's Choir Of Hamburg

As part of their New England tour, the "Hamburger Alsterspatzen," the Children's Choir of the Hamburg State Opera, will be performing a concert at Marble House on Sunday, June 28, at 1 p.m. at the invitation of The Preservation Society of Newport County. The concert is free to members of the Preservation Society and to visitors who have purchased a ticket to Marble House.

The choir consists of more than 100 girls and boys between the ages of 11 and 17, who are recognized for their outstanding artistry, musicianship and brilliant sound.

The choir has received many awards and honors, including the prestigious "Eisteddfod Prize" in Llangollen, Wales, and

the "Let the People Sing" award given by major European broadcasting stations.

Don't drink and drive.

SERVING NEWPORT COUNTY SINCE 1937

ARMY NAVY AIR FORCE MARINE CORPS

ARMY & NAVY SURPLUS STORE

OPEN 7 DAYS 262 THAMES ST., NEWPORT RI • 401-847-3073 PARKING NEXT DOOR

<p>FOOT LOCKERS from \$34.99 GET READY FOR CAMP</p>	<p>CONVERSE ALL-STAR CANVAS SNEAKERS Low & Hi Tops Assorted Colors \$24.99</p>
<p>BERMUDA SHORTS 100% Cotton \$17.99 khaki • navy • stone • olive • black • white</p>	<p>SLEEPING BAGS \$29.99 & UP EASTPAK BACKPACKS \$18.99 & UP MESS KITS \$5.99 CANTEENS \$1.99 CAMP BLANKETS \$14.99 & UP</p>

Celebrate

WITH A VERY SPECIAL PARTY

Storytelling... myths and legends about our ancestors
 Tee-Shirt Painting • Theater Games • Dance
 Bannermaking • Puppet Shows/Magicians ...and much more!
 TREATS AND FOODS THAT ARE GOOD FOR YOU AND FUN

Introducing... "In Your Name"
 A gift or donation will be given to a needy child or charitable organization of your choice.

For further information please call (401) 621-7225
 IN MASSACHUSETTS: 1-800-824-7225

WORLD AND NATIONAL NEWS

Evangelicals Voice Concern Toward Israel

by Tom Tugend
LOS ANGELES (JTA) — President Bush may well brush off the fact that his policies toward Israel have lost him whatever support he had among Jewish voters. But the same issue could also cost him votes among this country's 50 million evangelical Christians.

"We have supported the president strongly in the past, but there has been a tremendous disillusion about his policy on Israel," said Ed Steele, an influential producer of religious television programs.

Steele, one of the founders earlier this year of the Christian Evangelical Zionist Congress of America, participated in a recent two-day conference here, billed as the first annual Congress of Evangelical and Jewish Leaders.

"Israel must not give up one inch of land," said Steele, echoing the militant line of other evangelicals, who base their conviction on a literal acceptance of G-d's promise to the Jews and on their vision of future events leading up to the second coming of Christ.

Their pro-Israel sentiments are reinforced by their fear of Islamic fundamentalists, whom they view as a common enemy.

"The jihad (holy war) mentality wants to destroy both Jews and evangelicals," said David Lewis, a co-convenor of the meeting and chairman of the National Christian Leadership Conference for Israel.

At the conference of evangelicals and Jews, one of the key objectives, in addition to rallying support for Israel, was to try to clear away long-held

stereotypes and honestly confront areas of profound disagreement.

"The Jewish community has a monolithic view of us as Bible-thumpers and low-grade intellects," said Lewis of the Christian Leadership Conference.

Rabbi A. James Rudin, inter-religious affairs director for the American Jewish Committee, concurred that long-held images and misconceptions are only now starting to disappear.

Jews have often perceived (continued on page 14)



NATIONAL

WASHINGTON (JTA) — The House Appropriations Committee approved a \$13.9 billion foreign assistance bill for fiscal year 1993 reflecting broad cuts but leaving aid to Israel and to Egypt intact at current levels. The committee recently earmarked the Bush administration's full request for \$3 billion in military and economic aid to Israel and \$2.1 billion for Egypt, while cutting \$1.2 billion from the rest of the White House's foreign aid budget.

♦ ♦ ♦ ♦

NEW YORK (JTA) — Philanthropist Meyer H. Robinson, co-founder of the company that made Mantis-chewitz wines, died of congestive heart failure here on June 12. He was 86 years old. Robinson was born in Manhattan, and lived in Lawrence, Long Island. He attended Brooklyn College and received a bachelor of law and a master's degree from St. John's Law School.

INTERNATIONAL

JERUSALEM — The Labor Party defeated the right-wing Likud faction in elections held on Tuesday, according to *The Providence Journal*. Yitzhak Rabin, who promised to curtail Jewish settlements and give autonomy to Palestinians, was poised to form Israel's next government when nearly complete results were tabulated.

♦ ♦ ♦ ♦

TEL AVIV (JTA) — Israeli officials have welcomed international assurances that the release of two German hostages in Lebanon has not closed the book on efforts to free Israelis who may still be in the hands of Shiite militants there. U.N. hostage negotiator Giandomenico Picco made clear in Beirut that he did not consider the recent freeing of German relief workers Heinrich Struëbig and Thomas Kempner to be the end of the hostage saga.

♦ ♦ ♦ ♦

JERUSALEM (JTA) — The senior Jewish Agency official who was in charge of Operation Solomon, which brought 14,087 Ethiopian Jews to Israel last year, has voiced strong support for the recommendation of a government fact-finding team not to facilitate the early alyah of the Ferris Morra from Ethiopia.

Anti-Jewish Feelings Stronger In Former USSR

by Debra Nussbaum Cohen
NEW YORK (JTA) — Anti-Jewish feeling in the republics of the former Soviet Union has increased over the past 18 months, according to a survey sponsored by the American Jewish Committee.

The findings of the survey on attitudes toward Jews, other groups and the Middle East conflict were made public Thursday, June 11, simultaneously in Moscow and New York.

Conducted in March and April by the Russian Center for Public Opinion and Market Research, the survey found that attitudes toward Jews vary dramatically from one republic to another.

In Ukraine and Moldova, attitudes toward Jews were found to have improved significantly since the AJCommittee conducted a similar survey in October 1990. But in the Moslem republics of Central Asia, attitudes toward Jews have become a great deal more negative since the 1990 poll.

For the survey, pollsters conducted face-to-face interviews with 3,965 respondents in the three Baltic nations — Estonia, Latvia and Lithuania — and in seven of the 11 nations of the Commonwealth of Independent States: Russia, Ukraine, Belarus, Moldova, Azerbaijan, Kazakhstan and Uzbekistan. The results have a margin of error of plus or minus 3 to 5 percentage points.

Respondents in the three Moslem republics surveyed — Azerbaijan, Kazakhstan and Uzbekistan — held the most vociferously anti-Jewish opinion.

Forty-two percent of Azerbaijanis surveyed said they agree, completely or in part, with the statement that "now and in the past Jews have had too much influence on world events." At the other end of the spectrum, 12 percent of Moldovans surveyed agreed with that statement.

When asked if "Jews must answer for killing Christ," 30 percent of those in Uzbekistan agreed, compared to 6 percent of Estonians.

Since a majority of Uzbeks are Moslem, they probably agree that Jews must answer for killing Christ not for theological reasons, but because "this is another way to ascribe negative qualities to Jews," said David Harris, executive vice president of AJCommittee.

"If one adopts a world vision

Celebrities Support Israel Cancer Research Fund

"If you don't support ICRF, who will?" — Whoopi Goldberg

The Israel Cancer Research Fund offers a golden opportunity to support scientists on the cutting edge of progressive cancer research. — Estelle Getty

"With fine research conducted by Israeli scientists sponsored by the Israel Cancer Research Fund, there's real hope that a cure for cancer will be found in our time." — Edward Asner

Goldberg, Getty and Asner are all enthusiastic supporters of the Israel Cancer Research Fund's (ICRF) Fifteenth An-

niversary Campaign. Other celebrities signing on are Paul and Vanessa Sorvino, Tony Randall, Bill and Adair Beutel, Dr. Frank Field and Rhonda Fleming.

ICRF is the largest private donor to cancer research in Israel and has supported more than 750 research grants totaling over 13.3 million dollars to cancer researchers working in the leading institutions of Israel.

In its Fifteenth Anniversary year, ICRF is dedicating itself to expanding research in Israel in order to find a cure for cancer for the benefit of all mankind.

Randall Surgical Group Inc.

announces the association of

Marlene Cutitar, MD

General, Breast and
Laparoscopic Surgery

and

Steven Schechter, MD

General and Colorectal Surgery

One Randall Square

Providence, RI 02904

401-421-2928

Martin E. Felder MD

Stanley Simon, MD

D & M ANTIQUES

Single Items
or Estates
Appraised or
Purchased

Furniture • Paintings • Clocks
Dolls • China • Glassware
Oriental Rugs
337 NO. BROADWAY
EAST PROVIDENCE
431-1231
TOLL FREE 811-906-975-1230
Marvin Rubin, Proprietor

STAFF BUILDERS

HEALTH CARE SERVICES
PROFESSIONAL NURSING FOR HOME OR HOSPITAL
RN's • LPN's • Home Health Aides
Homemakers • Companions • Therapists
Call for immediate openings. Staffing Office
Available 24 hours a day 7 days a week
530 Broadway, Providence • 273-2280

A NIGHT OF BALLET

to
Benefit the Greenwich Odeum
Revitalization Project

FRIDAY SATURDAY
June 26 June 27
8 p.m.
at the E.G. High School Auditorium

Featuring
ANDREI USTINOV
ELENA MARTINSON
performing selections
from "Swan Lake"
and Kenneth von
Heidecke's
"Les Sirenes"

Tickets should be purchased in advance.
For tickets and information call the box office at
855-9119