

Cypripediums

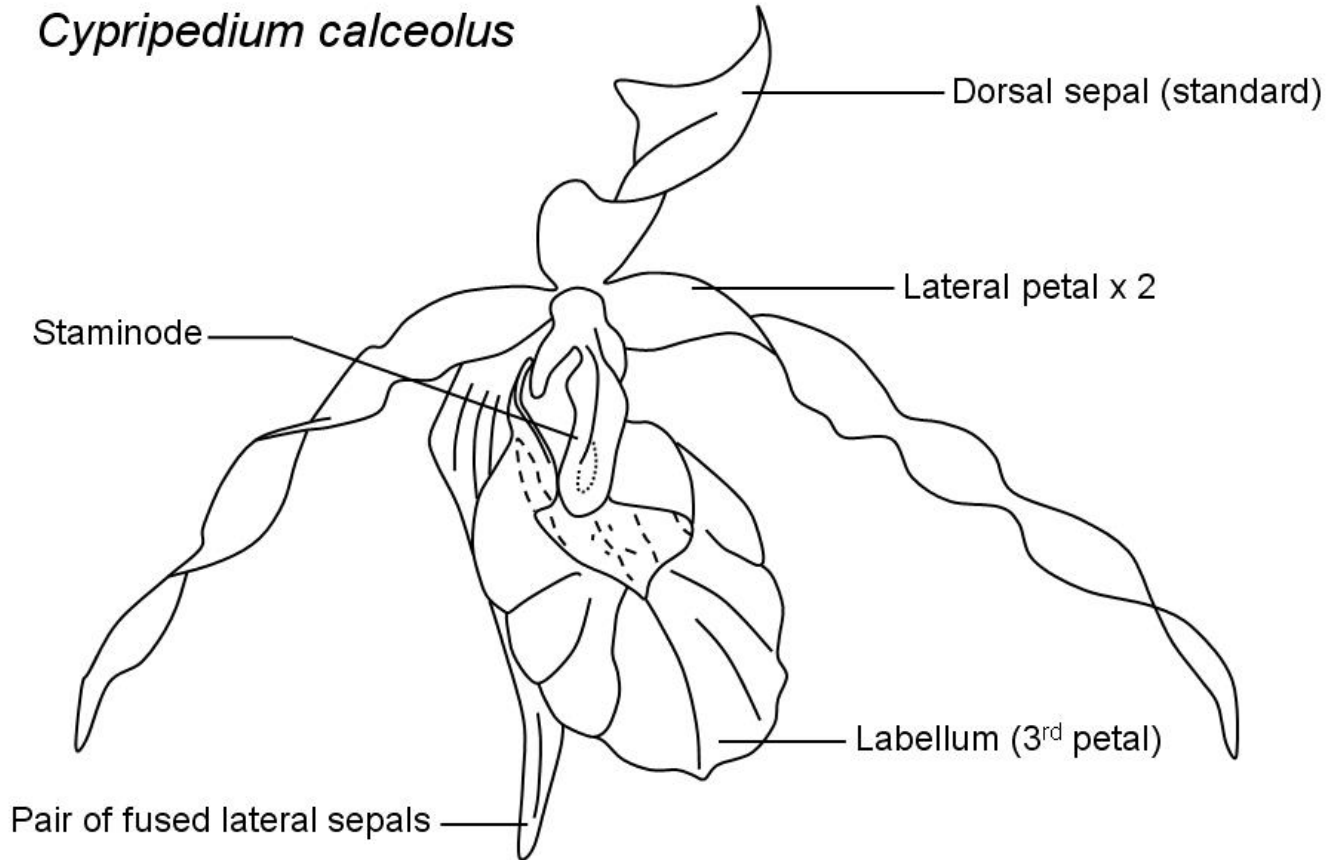
Lady Slipper Orchids

Cypripedium calceolus is the yellow lady's-slipper orchid, and the type species of the genus *Cypripedium*. It has a widespread distribution from Europe east through Asia from Spain to the Pacific, including almost every country in Europe plus Russia and northeastern China and Japan's Rebun Island.

Cypripedium calceolus sensu stricta ("in the strict sense") does not occur in North America. The closely related *Cypripedium parviflorum* and *C. pubescens* are often still referred to as subspecies or varieties of *C. calceolus*.

Diagram of Orchid Flower

Cypripedium calceolus



Cypripedium calceolus



Great Britain 1786, 2662



Romania 3465i, 4015





Denmark 923



Grenadines of St. Vincent 476a



Hungary 3087

Cypripedium calceolus

Latvia 550



Lithuania 425



Cypripedium calceolus

Slovakia 551



Slovenia 672



Cypripedium calceolus

Norway 972



Sweden 1419b



Cypripedium calceolus

Mongolia 2277



Russia 5994





U.N.-Vienna 196

Cypripedium calceolus

Malagasy 1273



Uganda 954a



Cypripedium

parviflorum



pubescens





Cypripedium planipetalum

Cypripedium parviflorum & *pubescens* (?)

Canada 1790



U.S. 2077



Cypripedium acaule



Cypripedium acaule

Canada 424

St. Pierre & Miquelon 360



Cypripedium reginae



U.S. 1376

Cypripedium passerinum



Carl Linhart, Pukaskwa NP



Canada 710

Cypripedium candidum



Cypripedium formosanum



China Rep. 3992



Cypripedium japonicum

Japan Z165

Cypripedium guttatum

Mongolia 2279



Malgasy 1276



Cypripedium guttatum



Mongolia 2279

Cypripedium macranthum

Mongolia 2278



Malagasy 1278



Cypripedium macranthum



Mongolia 2278

Arethusa bulbosa



U.S. 2076

Calopogon pulchellus



U.S. 3611j

Calypso bulbosa



U.S. 2079

Corallorhiza striata



Canada 2187